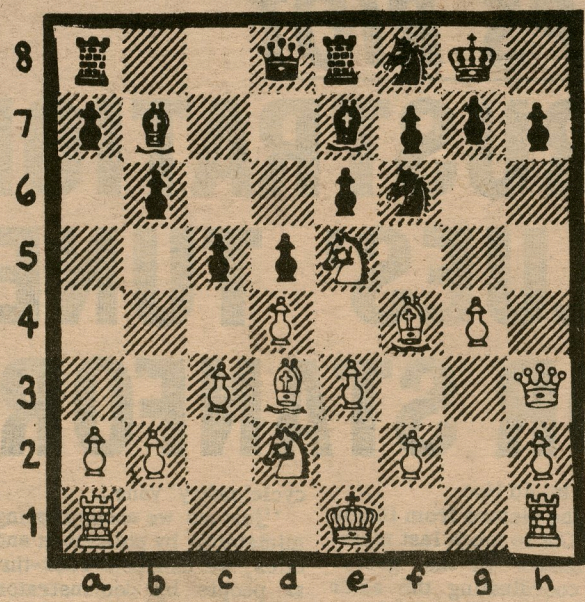


personal friend of almost every master around. Among the players who have tutored her are Frand Thornally (US master and world student team member in 1970) and international masters Addison and Rhee. If Miss Andrews tells all she knows about area masters, including this columnist, we will all be reaching for the arsenic and cyanide by dawn. Believe me, I watch my manners around Miss Andrews! As regards your other questions, she is actually over-qualified to write her column extremely well. Q. Jude, be honest. What is a BARB gold star? A. It will be an award for 150 correct solutions of Chess Challenge positions and will be accompanied by valuable merchandise awards, including chessboards, groceries, gasoline credits, etc. An actual star will be awarded, complete with signatures of ten international master and grandmaster players and a certificate as a keepsake. All Bay Area masters will also be asked to sign your certificate as well. The Editor of THE BERKELEY BARB also signs. It's no joke, man! Q. Is it true you are really trying to get an automobile dealer to award a car to the first and second winners of a BARB gold star? A. Yes, and I am such a fabulous promoter, showman, personality and the like that I am bound to succeed, if only because of my extreme humility and genius. Believe me, the readers who don't consistently answer the Chess Challenge positions are going to be very sorry! Q. Must a solution be absolutely correct to receive a checkmark? A. Yes. Lemons are not even acknowledged. Q. Jude, we want you to come to our club next Thursday for an exhibition and lecture. We can afford a \$50 fee. Is this possible? A. Gee, sorry, but all booking

of my appearances, except my BERKELEY BARB sponsored prison and hospital exhibitions, is handled by my incredible US tour manager, Russell W. Miller, Box 1631, Yakima, Washington 98907. I leave on a 30-state tour April 23rd and am booked solid until December 14th in Ft. Lauderdale, Florida!! I will do 16 exhibitions in California in February 1973 and seven of those are already filled. Hurry!



Chess Barbs

by Jude Acers (US senior master)

DIAGRAM NO. 10: Doda (Poland) vrs. Kraidman (Israel), World Olympiad, Siegen, Germany. White now missed a very beautiful forced win. Work out EVERY variation and prove your class! Solution elsewhere in this issue.

GAME: The Washington and California master Dennis Waterman drew two games with international grandmasters at the Louis D. Statham International Tournament in Lone Pine, California. Here is Waterman's draw with Larry Evans, many-time US champion and one of the top five rated US players. Waterman's notes in "Northwest Chess" are given as well. Waterman drew a tough game with grandmaster Walter Browne last year and has real tenacity in master events.

White: Dennis Waterman (Berkeley). Black: Larry Evans (Reno, Nevada; Elo rating, 2548). Lone Pine, 1972. Sicilian Defense, Najdorf Variation 1 e4 c5 2 Nf3 d6 3 d4 cd 4 Nd4 Nf6 5 Nc3 a6 6 Bg5 e6 7 f4 Be7 8 Qf3 Qc7 9 0-0-0 Nbd7 10 g4 b5 11 Bf6 Nf6 12 g5 Nd7 13 f5(A) Ne5?(B) 14 Qh5?(C) b4 15 Nce2 g6 16 Qh4(D) h6 17 Rgl gf?(E) 18 ef ef 19 Qh5! Ng4 20 h4(F) Bd7 21 Nf4 Qc5 22 Bg2?(G) Qe5!!! 23 Ng6!(H) fg 24 Qg6ch Kf8 25 Ba8(I) Rg8 26 Qh7 Rh8 and drawn by repetition of moves.

(Notes by USCF master Dennis Waterman)
 (A) More cautious and more often seen is 13 a3.
 (B) Incredibly, Evans makes a theoretically inferior move without having a specific improvement in mind. Correct is 13...Nc5.
 (C) Best is Qg3, as Gligorich pointed out after the game. (Acers note: I would definitely play Qh5 here.)
 (D) Not 16 Qh6? Ng4 17 Qg7 Bg5ch

18 Kbl Bf6 and wins.

(E) Vacating g6 for the knight, but the resultant porous position should not be tenable. Objectively best may be 17...Qd8 18 f6 Bf8 19 Nf4 Bd7 (not 19...Rg8 20 gh g5 21 h7! Rh8 22 Qg5 Rh7 23 Qg8 Rh2 24 Nfe6 fe 25 Ne6 Qf6 26 Nc7ch Kd8 27 Na8 Qf2 28 Rg2 wins) 20 Bh3 Qa5! 21 Kbl (21 Be6? Be6 22 Nfe6 fe 23 Ne6 Qa2 with many threats) 0-0-0, with a position difficult to evaluate. (Acers note: White should win easily after 22 Rg3 and opening up the "c" file.)

(F) Even stronger may be 20 g6! Evans intended 20...Bg4ch 21 Kbl 0-0 22 h3 Nf6 23 gfch Kh7 (23... Qf7? 24 Qh6) 24 Qf3 Qb7 and White is much better.

(G) Best is 22 g6!, and now (a) 22 0-0-0 Ba6ch; (b) 22...Qe5? 23 gfch Kd8 24 Ng6 Qe3ch 25 Kbl Qgl 26 Nh8 Ne3 27 Qf3!; (c) 22...0-0 23 gfch Rf7 24 Qh6 Rg7 25 Qg7chl, with technical problems still to solve.

(H) Not 23 Ba8 hgl

(I) Allowing the draw. I spent a lot of time considering 25 Nf5 Rg8! without finding anything definite, since 26 Ne7? loses to Qe3ch. Some continuations I examined ran 11 moves deep; and still nothing...

QUESTIONS YOU ASK JUDE ACERS: Q. What is the best way to become a better player? A. Study annotated master games exclusively; play only serious recorded games (Go to the movies if you want to have fun.) and avoid speed chess, the American chess disease. Play in every Swiss system tournament possible until your rating is 2300. After that, forget it. Q. I was amazed to see a chess column by Alexandra Andrews in "The Sunday Paper." Who is she? I've never heard of her. A. Miss Andrews is one of the strongest women players in the US and a