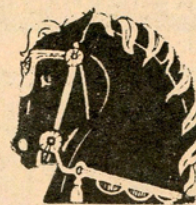


1,001 KNIGHTS

tales from the SDCC....



Published by the San Diego Chess Club

2225 Sixth Ave.

June 1991

U.S. SENIOR OPEN IN SAN DIEGO!

This summer will see not just one, but two National Tournaments in Southern California. The U. S. Open will be held in Los Angeles July 28 - Aug. 9 and the 1991 U. S. Senior Open in San Diego from July 14 - 17! The Senior Open is a casual one round per day as that is the preference of Senior players. After a poor attendance at the 1989 US Senior Open held in New Jersey over the 4th of July weekend with 2 rounds per day for 3 days, a lot of complaints were voiced. Later that summer at the US Open in Chicago, the delegates mandated that future US Senior Opens would be one round per day. The six day format allows ample time for relaxing, sightseeing and recharging the batteries after a gruesome battle over the chessboard the night before. Spouses of the players also like the one round per day schedule- they're no longer chess widows!

The tournament this year will be held in the new Omni Hotel, a four-star facility located next door to Horton Plaza. This is a 450 room beauty with all the amenities and an ideal location for vacationing in San Diego. The playing hall is large, well lighted and quiet - close by is a large quiet room for spouses to use for playing cards, visiting with friends and planning the days activities. All USCF members age 50 and over are eligible to play in the US Senior Open. Your birthday must be no

later than July 14, 1991. Trophies will be awarded to each age group 50-54, 55-59, 60-64, 65-69, 70-74, 75-79 and 80 and above. At the 1990 tournament there were so many players over 75 that a 80 and above trophy has been added this year. Trophies will also be awarded to winners of each class.

This will be the 11th Annual U. S. Senior Open and the 5th one hosted by the San Diego Chess Club. The 1984 and 1985 tournaments were held at the Grosvenor Inn and the 1987 site was the San Diego Princess Resort. These three tournament had the three highest attendances in the Senior Opens. The 4th highest attendance was last year, also hosted by SDCC and held on board the SS Norway in the Caribbean. 81 players were also sailors for one glorious week in November 1990. So many glowing reports were received about the Cruise/Tournament that the US Chess Federation has awarded the 1992 U. S. Senior Open to SDCC also. It will be again be held on a Cruise, very likely in August and to ALASKA! A drawing for a free Cruise ticket will be held at this years tournament - all players will automatically be entered! The tournament will again be directed by the Dean of American Chess - GM George Koltanowski. "Kolty" has directed all of the US Senior Opens except one and is extremely popular among his 'peers.

He will attempt to set a new World Record this year for a simultaneous exhibition at age 87+! Last year Kolty set another World Record for a simultaneous exhibition (at age 86+!!) aboard the SS Norway. The only day the ship experienced big waves, (a storm was the culprit!?) some extra motion that sent Kolty lurching occasionally from board to board. Kolty claimed that a Bishop to e3 move ended up being a bishop to g5 move due to the extra movement. It appeared that Kolty was practicing sprints as he bolted from starboard to port, but the reality was just a big wave. Kolty's only complaint - tired legs!

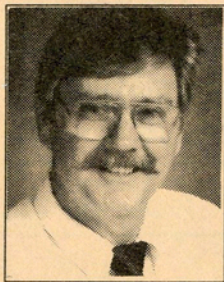
We strongly encourage all Southern California Senior players to attend this 1991 U. S. Senior Open. It will be a very memorable event!

CONTENTS

Article	Page
1991 U.S. Senior Open	Cover
President's Column	2
North County News	2
Calendar	3
Master Class	4
SDCC News	5
Outdoor Simuls	5
Scholastic Chess	5
Games	6
Problems	6
SDCC Late Summer Classic	7
Tournament Info	8

PRESIDENT'S COLUMN

By Jack Miller



We have an extremely busy summer planned - lots and lots of chess! Our annual Class Championship will be June 21-22 &

23 with trophies for champions in each class. New this year will be Round One on Friday nite and only two rounds Saturday instead of three. Should be less demanding and more fun!

Next is a National Tournament, the 1991 U.S. Senior Open, July 14-19. One round per evening at the beautiful downtown Omni Hotel. Open to all age 50 and up. We will have several players from SDCC, including the defending Class B Champion!

The Senior Open will be followed immediately by a weekend swiss at the same hotel. "U.S. Open Tune-up Classic" will be a 5 rounder with lots of \$\$ prizes.

On July 28 the U.S. Open begins in Los Angeles and runs two weeks! The Closed U.S. Championship will run simultaneously with the top 16 players in the United States playing for the national title. Here's a rare opportunity to witness some Dynamic Chess! (And World Champion Garry Kasparov will make an appearance Aug. 3! Ed.)

Sunday, Aug 18 is our 4th annual Bill Glass Memorial Action event. We are considering a WBCA Blitz tournament on Saturday, Aug 17 as part of this weekend. Please let us know what you would like to see.

Labor Day weekend will see the biggest event in San Diego in years with the Southern California State Championship tournament here at the downtown Ramada Bay-view Hotel. We are expecting over 200 players for the three day tournament which will be kicked off with a

Friday night WBCA Blitz tournament. GM Walter Browne has been invited and is expected to participate in both events.

Plus our Saturday series of Blitz, Quads, etc. is being continued thru the end of the year. Saturday Quads and Saturday U1600's will be alternating months and Saturday Blitz will be every month. See our Calendar for dates.

So book up on your openings and fine tune your chess clocks and get ready for a "Reeeally Biggg Shoew" this summer. Happy Chess Jack

NORTH COUNTY NEWS

The winner of North County Open #68 was Kenneth Fitzgerald with a score of 4.5/5, his only draw being with Michael Nagaran. The tournament was held from March 8 thru April 15, 1991. In second place with a score of 4-1 was Aniceto Lacno, his only loss being to Fitzgerald. Twenty players participated in the event.

The North County Chess Club meets on Friday evenings from 6:30pm on, at the Community Room of HomeFed Bank, 1540 E. Valley Parkway, Escondido (Near the corner of E. Valley Pkwy and Rose St.). North County Open No.69 is now in progress with 24 players participating.

NORTH COUNTY SPRING OPEN

By Michael Nagaran

Seventy-four eager chess players made the North County Spring Open, March 23-24, the most successful in a long series of weekend tournaments sponsored by the North County Chess Club. Located at the Compri Hotel in Rancho Bernardo, the tournament featured 22 Open players, headed by 12 masters including two IM's, and 3 senior masters. The Reserve section had an astonishing 52 players, the largest ever for a North County event.

The Open section was won by IM Igor Ivanov with a perfect 4-0. Tied

SDCC Newsletter Staff

James Woodward Editor
Cy Lakdawala Asst. Editor

Contributors

Michael Nagaran
Alina Markowski
Vic Flashman
Jack Miller
USA Today Sports Network

SDCC Volunteers

Jeff Martin Equip. Manager
Jeff Martin Prize Director

for 2nd-4th positions were: local favorite San Diegan SM Cy Lakdawala, SM Felix Villarreal, SM Larry Remlinger and NM George F. Kane all at 3-1. Best below 2200 were experts: San Diegan Rudi Katzl, Enrique Parra Vallajo and Brian Zavodnik with 2 points. After a long absence it was a pleasure to see playing in Southern California Felix Villarreal, Juan Gomez and George Kane. Villarreal and Gomez, respected players in the San Diego area for over a decade, are residents of Mexico. Kane, a nationally known master who now lives in Rancho Bernardo, had not played in a tournament for over a decade, played very well losing only to Ivanov. The five round Reserve section (below 2000) was won by James Adkins of San Diego with 4.5 points. Tied for second at 4 points were: Steve Lenores of Oceanside, Joe Wagner of Los Angeles, Dennis Saccuzzo of Rancho Bernardo, Jeff Martin of San Diego, and Gunars Francis of Fallbrook. Best below 1800 in a tie with 3.5 points were David Weber of Plant City, Florida and Scott Tennyson of Escondido. The under 1600 winner was Barbara Koks of Costa Mesa with 3 points, second at 2.5 were William Paul of San Diego and Edward Pugh of Coronado. Winning the under 1400 prize was Michael Ross of Escondido at 2.5, tied for second were Frank

(Cont. on pg.5)

CALENDAR

The San Diego
Chess Club



Jun 12-Jul 10	SDCC Summer Swiss
Jun 15	Saturday <i>Blitz</i> at the Balboa Club.
Jun 21-23	1991 Class Championships
Jun 29-30	Sat/Sun U1600 Swiss at the Balboa Club.
Jun 30	Outdoor Simul at Balboa Park!
July 4-7	Pacific Southwest Open LAX Marriott
July 13	Saturday Quads at the Balboa Club.
July 14-19	U.S. Senior Open @Omni Hotel downtown SD
Jul 17 - Aug. 14	SDCC Late Summer Swiss
July 20-21	"U.S. Open Tune-up" @Omni Hotel downtown SD
July 27	Saturday <i>Blitz</i> at the Balboa Club.
July 27	Outdoor Simul in Balboa Park.
Jul.28 - Aug.9	U.S. Open in Los Angeles!
Aug. 10-11	Sat/Sun U1600 Swiss at the Balboa Club.
Aug. 17-18	Bill Glass Memorial Tournament Saturday WBCA <i>Blitz</i> - Sunday Action Chess
Aug.31-Sep 2	Southern Calif. Open State Championship

3

SDCC BOARD OF DIRECTORS

Jack Miller	President	287-0089
David Saponara	Immediate Past-President	420-7436
Elmer Haugum	Treasurer	582-0468
James Malowney	Secretary	569-7131
Cyrus Lakdawala	Public Relations Director	583-1855
James Woodward	Newsletter	581-9111

MASTER CLASS

By SM Cy Lakdawala

Following are two of my games from the 1991 San Diego Chess Club Championship.

Lakdawala,C. - Saylor,M.

SDCC Ch. 1991, 1991

1.Nf3 d5
2.g3 Nf6
3.Bg2 Bf5
4.O-O e6
5.d3 h6
6.c4 c6
7.Be3

7.b3 is the alternative in the Reti.

7... Nbd7

The endgame after 7...dc4 8.dc4 Qxd1 9.Rxd1 favors white.

8.Qb3 Qc7?

The start of black's troubles. c7 looks like a tactically vulnerable square. The books recomend 8...Qc8!

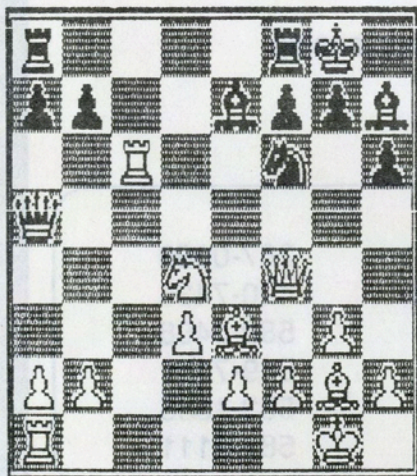
9.cxd5 exd5
10.Rc1 Be7
11.Nc3 O-O?!
12.Nd4?!

Overly fancy. The simple 12.Nxd5! wins a pawn without any fuss.

12... Bh7?!

He had to try his luck with 12...Be6 13.Ncb5! Qd8 14.Rxc6! a6! 15.Rxe6 ab5 16.Rxe7 Qxe7 17.Qxb5.

13.Nxd5 Nxd5
14.Qxd5 Nf6
15.Qf3 Qe5
16.Qf4 Qa5
17.Rxc6!



17... bxc6

18.Nxc6

I thought he would resign but...

18... g5!

I overlooked this shot which wins the exchange. Fortunately for me black's position remains too scattered to be saved.

19.Nxe7+ Kg7
20.Qd4 Rad8
21.Qc4 Qe5
22.Nc6 Qxb2
23.Bd4 Rxd4
24.Qxd4 Qxe2
25.Bf1 Qd2
26.Nxa7

Two pawns down, no targets for attack, and faced with a paralyzing white queen's position on d4, black has little hope of saving the position.

26... Rb8
27.Nc6 Rb2
28.a4 Rc2
29.Ne5 Bf5
30.Nc4 Qb4
31.Ne3! Qc5
32.a5 Kg6
33.Nxc2 1-0

Wagner,C - Lakdawala,C.

SDCC Ch.1991, 1991

1.g3 d5
2.Bg2 Nf6
3.d3 Bf5
4.f4

White transposes to a reversed Leningrad Dutch versus the London System.

4... e6
5.Nf3 Bc5!?

Fred Reinfeld would approve.

6.e3 O-O
7.Qe2 a5!?

Probably not a good move, but I wanted to discourage O-O-O.

8.Nbd2 h6
9.Ne5!

Threatening 10.g4! with an unstoppable attack.

9... Nfd7!

Now 10.g4? is met by 10...Nxe5 11.gf5 Qh4! favoring black.

10.e4 dxe4
11.Nxe4 Ba7
12.c3?

Overly optimistic. White cannot support the massive center he begins erecting. After 12.Nc4 white still holds a tiny edge.

12... Nxe5
13.fxe5 Nd7
14.d4 c5
15.Be3 cxd4
16.cxd4 Qb6!

Suddenly white's overextended. 17.O-O is met by 17...Nxe5! and 17.Bf2 by 17...Bxe4! 18.Bxe4 Qb4+ 19.Qd2 Qxd2+ 20.Kxd2 Nxe5!

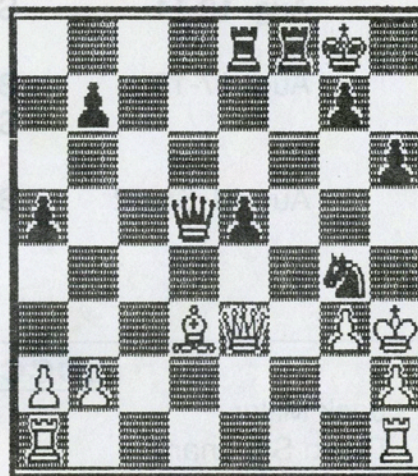
17.Kf2!?

He doesn't lose material with this move, but his king lacks shelter.

17... f6
18.exf6 Bxe4
19.Bxe4 Nxf6
20.Bd3 e5

Good enough, but in the post-mortem analysis, a group of masters came up with 20...Ng4! 21.Kg2 Nxe3+ 22.Qxe3 Qxd4 23.Qxe6+ Kh8 24.Qg6 Rf2+ 25.Kh3 Qd7+ 26.Kh4 Rf4+!! 27.g4 Bf2+ 28.Kh5 Qd5+ 29.Bf5 Rxf5+! a) 30.gf5 Qf3+ 31.Qg4 g6+!! 32.fg6 Qd5+ or b) 30.Qxf5 g6+!! 31.Kxg6 Rg8+ winning.

21.Kg2 Qc6+
22.Kh3 Rae8
23.d5 Qd7+
24.Kg2 Bxe3
25.Qxe3 Qxd5+
26.Kh3 Ng4!



27.White resigns.

It's curtains after 27.Kxg4 Qxd7 28.Kh4 g5+ 29.Kh5 Qh3+ 30.Kg6 Re6 mate.

N.C. Spring Open (Cont. from Pg.2)

Godinez and Maria Riveroll both from San Diego at 2. The unrated winner with 2.5 was Michael E. Hall of San Diego.

Special thanks go to Alina Markowski for her tireless efforts in promoting and organizing the North County events, Bill Arnold, Jay Blem and Vic Flashman for aiding all of us when we needed help.

SDCC NEWS

The **1991 San Diego Chess Club Championship Final Round Robin** was won convincingly by SM Cy Lakdawala with 6.5/7! A point and a half behind in second place was NM Gustavo Hernandez with 5/7 who was the only person to draw with Cy. 3rd place with a 4.5/7 score was NM Mark Saylor. 4th place with 4/7 was NM Todd Smith. This 8 player round robin contained one Senior Master, 4 National Masters (all 2300+!) and three Experts.

The **April Saturday Blitz** had 8 participants and a tie for 1st-2nd between SM Cy Lakdawala and Expert Phil Leone, each with 13/14!! 3rd place was Jim Agler with 8/14 and Pan Caccam and Richard Luban tied for 4th-5th, each with a 6/14 score also tying for 1st U1700.

Note: All San Diego Chess Club Saturday *Blitz* tournaments will produce ratings that will be used in all future Saturday *Blitz* tournaments!

SDCC Saturday/Sunday U1600 No.2 was won by Frank Jones with a perfect 3-0 score. 2nd place was Louis Pace with a 2/3 score. 1st U1200 was Jack Backes, also with a 2/3 score.

The **SDCC Spring Classic Action** Wednesday night tournament was won by SM Cy Lakdawala with a perfect 8/8. 2nd place went to NM David Hart with 6.5/8. 3rd-4th place went to Jim Agler and NM Garcia with 5.5/8 each. 1st Class B was Randy Wirtz with a perfect 8/8 score. 2nd-3rd Class B were David Baer and Pan Caccam with 6/8 each.

4th Class B was Don Osborne with a 5/8 score. 1st U1600 was Carl Batuyong with a perfect 8/8 score! 2nd-3rd U1600 were Charles Carr and Victor Cardenas both with 6/8 scores. 4th U1600 was Robert Draper with 5.5/8.

OUTDOOR SIMULS!

Our Summer series of outdoor Simuls in Balboa will continue on five Saturdays and one Sunday this summer. Play outdoors on the patio at Casa del Prado while your family explores the museums.

Dates will be:

Sat June 1

Sun June 30

Sat July 27

Sat August 24

Sat Sept 21

Simuls will be conducted by SM Cy Lakdawala starting at Noon and are free to all interested Chess Players. Please pass the word to your friends and neighbors and especially any school children you know - Chess is a great way to encourage kids to keep their minds drug free!

TD CLASS

David Saponara and Vic Flashman will be running a Tournament Director Class sometime in the fall. This is a 30 hour course (ten 3 hour sessions) most likely on Thursday evenings. The course will be in two parts, 1) The rules and 2) The mechanics.

In the Rules section, all rules for directing a tournament will be covered in detail.

In the Mechanics section; everything from signing up players, pairings, techniques of handling disputes, scheduling and ratings reports will be covered.

Anyone interested should contact either David Saponara (420-7436) or Vic Flashman (233-1288) for further details.

Continued on pg. 6

SCHOLASTIC CHESS

The 1991 San Diego Scholastic Championship was held May 18 at the San Diego Chess Club. First place High School went to Gary Pastushenko (9th grade). First place Junior High went to Paul Reveles (8th grade). First place Elementary 4-6 went to Edward Ma (6th grade). First place Elementary K-3 went to Jerry Vinokurov (3rd grade). There were 28 participants.

Students:

There will be a **student workshop** at the San Diego Chess Club (Balboa Club at 6th & Ivy in Balboa Park), every Saturday morning from 9 am to Noon - **Free!!**

Come one - come all!

NEW KID ON BLOCK

Timothy Rustom Lakdawala, known as "little TAL", was born April 29, 1991 at 12:48 pm. He weighed 6 lbs - 9 ounces and was 18.5 inches long. Father Cy says, "He may be small, but he's wirey!" Mom Nancy is doing great, as is Daddy Cy. There were rumors that "little TAL" was already very booked up on the Colle System (Or was that Colic??) after just a couple of weeks! (Jeez, at that rate Timothy will digest ECO by age 3!?) Also, Daddy Cy was feeding Timothy while sitting at the board studying a complex combination, stumped, when "little TAL" knocked over the piece that solved the problem!! Commented Daddy Cy, "He just eats and eats every thing up! I wouldn't believe it if I wasn't seeing it!" Asked to comment on Timothy becoming a Master some day, Daddy Cy simply said, "No!"

Don Osborne

Ozzies Plumbing

Repipes, Water Heaters, Drains

695-1232

No. County 738-6245

GAMES

Gomez, J.(NM) - Strauss, D. (IM)

North County Spring Open, 1991
 1.e4 c5 2.Nf3 Nc6 3.d4 cxd4 4.Nxd4
 Nf6 5.Nc3 g6 6.Be3 Bg7 7.f3 0-0
 8.Qd2 d5 9.Nxc6 bxc6 10.Rd1 Qc7
 11.exd5 Nxd5 12.Nxd5 cxd5
 13.Qxd5 Be6 14.Qc5 Qxc5 15.Bxc5
 Bxb2 16.Bd3 Bxa2 17.0-0 a5
 18.Bxe7 Rfc8 19.Be4 Ra7 20.Rd8+
 Rxd8 21.Bxd8 a4 22.Rd1 a3 23.Bb6
 Ra6 24.Bc5 Bc4 25.Bb7 a2 26.Bxa6
 Bxa6 27.Rd8+ Kg7 28.Bf8+ Kf6
 29.Rd6+ Kf5 30.Rxa6 a1Q+ 31.Rxa1
 Bxa1 32.Kf2 And White won in 42.
 1-0

Villarreal, F. (SM) - Bragg, D. (NM)

North County Spring Open, 1991
 1.e4 c6 2.Nc3 d5 3.Nf3 dxe4 4.Nxe4
 Nf6 5.Nxf6+ exf6 6.d4 Bd6 7.Be2
 0-0 (7...Na6! see Silman's "Dynamic
 Caro Kann") 8.0-0 Bg4 Also played
 are 8...Bf5?! and 8...Re8. 9.h3 Bh5
 10.c4 Re8 11.Re1 Nd7 12.Be3 Nf8
 13.d5 c5 14.Qd2 Qc7 15.Rac1 a5
 16.Nh4 Bg6 17.Bd3 Re5 18.Qc2
 Qd7 19.Bd2 Rh5 20.Nxg6 Nxg6
 21.Bxg6 hxg6 22.Re2 g5 23.Rce1
 g4 24.hxg4 Qxg4 25.Qe4 Rh4
 26.Qxg4 Rxg4 27.Re4 Rxe4
 28.Rxe4 Kf8 29.Kf1 b6 30.Bc3 Re8
 31.Rxe8+Kxe8 32.Ke2 Ke7 33.Kd3
 g6 34.Kc2 f5 35.Kb3 Kd7 36.Bf6
 Bc7 37.Ka4 Kd6 38.Kb5 Kd7 39.Bg5
 f4 40.f3 Be5 41.Kxb6 f6 42.Bh6 g5
 43.Bf8 1-0

Rubio, S - Adkins, J.

North County Spring Open
 (Reserve Section), 1991

1.e4 d6 2.f4 g6 3.Nf3 Bg7 4.Nc3 c5
 5.Bb5+ Bd7 6.Bxd7+ Qxd7 7.0-0
 Nc6 8.d3 Nf6 9.a3 0-0 10.Qe1 Rab8
 11.Kh1 b5 12.Nd1 a5 13.Ne3 Ng4
 14.Nxg4 Qxg4 15.h3 Qd7 16.Rb1
 b4 17.b3 Bc3 18.Qh4 Kg7 19.Bb2
 Bxb2 20.Rxb2 bxa3 21.Rbb1 Nb4
 22.Rf2 a4 23.bxa4 a2 24.Ra1 Qxa4
 25.Ne1 Qa3 26.c4 Qc3 27.Rfxa2
 Nxa2 28.Rxa2 Rb1 29.Re2 Ra8
 30.Kh2 Raa1 0-1

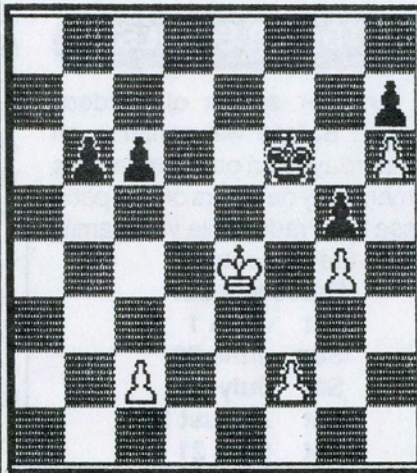
PROBLEMS

Start from the diagramed position and give an evaluation first.

Then give analysis to support your evaluation.

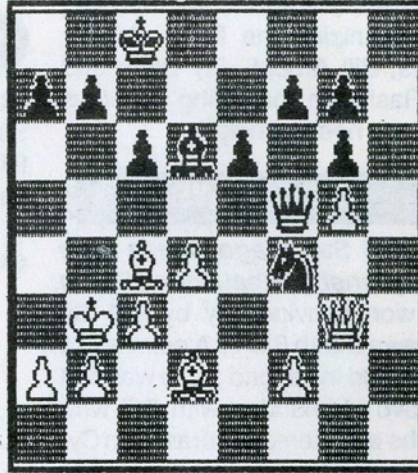
Turn in to any SDCC board member.

Solutions will be given next issue.



1) White to Play

OK, equal material, but can white win this game with 1.f4?



2) Black to Play

Black's a pawn up - but it's doubled - and white's got the two bishops. Should black offer a draw.

Saylor, M - Zamir, G

SDCC Ch. 91 RR 2/27/91

1.e4 e6 2.d3 d5 3.Nd2 Nf6 4.Ngf3 c5
 5.g3 Nc6 6.Bg2 Qc7 7.0-0 Bd7
 8.exd5 exd5 9.Re1+ Be7 10.d4 c4
 11.Nxc4! dxc4 12.Bf4!! Qa5?!
 13.Ne5 Kf8 14.Nxd7+ Nxd7 15.d5
 Nd8 16.Qe2 Qc5 17.d6 Ne6
 18.dxe7+ Ke8 19.Rad1 Nxf4 20.gxf4
 Qc7 21.Qd2 h5 22.Qd5 g6 23.Re6
 Nb6 24.Qd8+ 1-0

Ensey - Virtue

SDCC Class Ch. "B" 3/13/91

1.d4 Nf6 2.c4 c5 3.Nf3 cxd4 4.Nxd4
 Nc6 5.Nc3 a6 6.e4 e6 7.Be3 Be7
 8.Be2 d6 9.0-0 0-0 10.Qd2 Bd7
 11.Rad1 Rc8 12.f4 Qc7 13.b3 Nxd4
 14.Bxd4 e5 15.Be3 Rfe8 16.fxe5
 dxe5 17.Rxf6 Bxf6 18.Qxd7 Qa5
 19.Nd5 Qxa2 20.Nxf6+ gxf6 21.Qd3
 Qa5 22.Bh6 Kh8 23.Qd6 Re6
 24.Qd7 Rg8 25.Qxf7 Qb6+ 26.Kf1
 f5 27.Be3 Qc6 28.Rd7 Rh6 29.Bxh6
 Qxh6 30.Qxf5 Rf8 31.Rxh7+ 1-0

Flashman - Janos

SDCC Class Ch. 2/20/91

1.f4 e6 2.b3 Qh4+ 3.g3 Qf6 4.c3 d5
 5.Nf3 Nc6 6.e3 Bd7 7.d4 Bd6 8.Ne5
 Bxe5 9.fxe5 Qd8 10.Bd3 f6 11.0-0
 fxe5 12.Qh5+ Ke7 13.Ba3+ 1-0

TD Class

(Cont. from pg. 5)

Following are the five levels of national tournament directing.

1) **Local Director** - <50 players per tournament.

2) **Accredited Director** - <100 players per tournament, directing experience and written test.

3) **Senior Director** - #2 + tournaments of any size and written exam.

4) **Associate National Director** - #3 plus written exam.

5) **National Director** - #4 + experience and exam.

SDCC Vic Flashman just received his Senior TD title! Congratulations! David Saponara received his Senior TD title in 1984.

San Diego Chess Club proudly presents

1991 CLASS CHAMPIONSHIPS

Fri - Sat - Sun: June 21, 22, 23

Playing Site: San Diego Chess Club - 6th & Ivy

10 Grand Prix Points

\$1500 Prize Fund (Based on 60)

3 Sections: Master & Expert, Class A & B, Class C-D-E-Unr.

Round Times: Rd1: Fri 7:30pm, Rds 2-3: Sat 10am - 4:30pm, Rds 4-5: Sun 10am - 4:30pm

5 Round Swiss **Time Control:** 50/2, G/1

Registration: Fri 5-7pm, Sa. 8-9:30 am

TD: Vic Flashman (619) 233-1288

One 1/2 Bye available Rds 1-3



Note: Round 1 will be played Friday Evening at 7:30pm!

Prize Fund:

<u>Master/ Expert</u>	<u>Class A/B</u>	<u>Class C/D/E/Unr.</u>
1st \$350+Trophy	1st Class A \$100+Trophy	1st Class C \$100 + Trophy
2nd \$150	2nd Class A \$ 50	2nd Class C \$50
3rd \$ 75	1st U 1900 \$ 50	1st U1500 \$50
1st U2300 \$75		
1st Expert \$100+Trophy	1st Class B \$100+Trophy	1st Class D-E-Unr.
2nd Expert \$75	2nd Class B \$50	Master Quartz+Trophy
1st U2100 \$75	1st U1700 \$50	2nd D-E-Unr. \$35
Entry Fee:		
\$49 if received by 6/19, \$55 at site	\$44 if received by 6/19, \$50 at site	\$39 if received by 6/19, \$45 At site

Unrated may play in Class C/D/E/Unr. section ONLY!

Qualifying Event for 1992 Southern California Championship

SCCF Membership required \$10 (Jrs. \$5)

For additional info call: Vic Flashman (619) 233-1288 or Jack Miller (619) 287-0089

Hotel Info: Ramada Inn - Bay View \$59 (1 or 2), extra person \$15 (Includes parking garage)

6th & K ☎ (619) 696-0234 (mention Chess Tournament)

Name _____ Phone _____ \$\$ enclosed _____

Address _____ City _____ Zip _____

USCF ID# _____ Exp.Date _____ SCCF _____ Rating _____



Mail Entry to: San Diego Chess Club

P.O. Box 600843
San Diego, CA 92160

Mail to arrive by June 19th latest

Circle Section you wish to enter:

Master/Expert	Class A/B	Class C/D/E/Unr.
\$49/55	\$44/50	\$39/45

1/2 Bye Circle round: 1 2 3

Saturday/Sunday U1600's

Jun 29 & 30, 1991

\$220 Prize Fund (based on 16 players)

Format will be a 4 round Swiss

Site: San Diego Chess Club - 6th & Ivy, Balboa Park

Time Control: 30/90, 25/1

Entry Fee: \$20

If received by Jun 26, 1991, otherwise \$5 more at site.

(\$5 discount for SDCC members)

Registration: Sat 10:15 - 10:45 am

Rounds: Sat - Sun: 11am, 4:30pm

TD: Vic Flashman

For further Tournament Info Call:

Vic Flashman (619) 233-1288 or

Jack Miller (619) 287-0089

Prize Fund: (Based on 16 players)

1st \$100 1st U1400 \$35

2nd \$60 1st U1200/Unr \$25

Trophies to 1st, 2nd, 1st U1500, 1st U1400,
1st U1300, 1st U1200, 1st. Unr.

Medallions to 2nd & 3rd U1500, U1400,
U1300, U1200 & Unr.

SDCC Late Summer Classic

July 17-24-31, Aug 7-14, 1991

5 Round Swiss



NEW! Time Control: Game/120

Two Sections: Open (open to all),
Reserve (U1700)

Entry Fee: \$17 advance, \$5 more at door.
TD: Vic Flashman

Prize Fund:

All Cash Prizes!!

70% of Entry fee will be returned

The San Diego Chess Club meets 7:15 PM every Wednesday evening at the Balboa Club, corner of 6th & Ivy in Balboa Park. Chess Workshop for beginners at 6:30 PM, FREE!
Visitors are Welcome! For additional information, call 287-0089.

The San Diego Chess Club
P.O. Box 600843
San Diego, CA 92160

ADDRESS CORRECTION REQUESTED

Bulk Rate
U.S. Postage
PAID
San Diego, CA
Permit No. 1722