

San Mateo City School Tournament

160 chess players participated in the third annual chess tournament held at Abbott JHS. The event was sponsored by the San Mateo Burlingame Chess club and the San Mateo City School District. The event was organized by Mrs. Doris Coloma, directed by Jim Mogani, with assistance from W. Goodwin and Al Hansen.

 Club members are invited to submit games for publication

MIDDLE SCHOOL

- 1st - Bowditch (team 1): Dean Mau, Martin Lim, Eric Stern, Ken Okazaki, Hesham Gabor.
- 2nd - Bowditch (team 2): Tim Okazaki, Lawrence Chan, Mike Kang, Darryl Chan, David Henley.
- 3rd - Abbott (team 1): Bryan Bent, Steve Robison, Kevin Stark, Armin Wolski, Eric Corona.
- Tied for 4th - Ralston Intermediate: David Rosner, Reza Barkhordar, Larry Crouch, John Murata, Jeff Brown, and Borel: Russell Wong, Darryl Kwan, Michael Leona, Diana Ho, Tran Cutherell.

BOARD TROPHIES

- Board 1 - Dean Mau, Bowditch and Dave Rossner, Ralston Intermediate.
- Board 2 - Dave Rossner, Ralston.
- Board 3 - Jamie Wong, Bayside.
- Board 4 - Dianna Ho, Borel.
- Board 5 - Hesham Gabor, Bowditch.

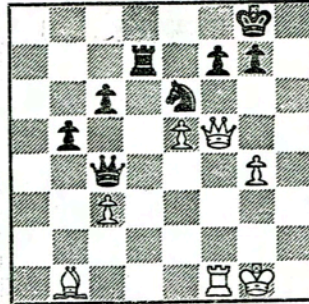
K-5 SCHOOL

- 1st - Audubon (team 1): Robert Dickson, Ron Gustafson, Jeffrey Buchthal, Kevin Koo, Glen Schubert.
- 2nd - Audubon (team 2): Michael McFarland, Brad Vogt, David Trinidad, Allen Clapp, Steven Fein.
- 3rd - Laurel: Peter Thiel, Eric Osborn, Carla Winter, Jim Cattarin, Brian Doyle.
- Tied for 4th - Knolls: Mike Tanaka, Geren Simpson, Warren Lutz, William Chang, David Smith, and South School, Hillsborough: Mark Kriessmann, Noah Zim, Michael Baldwin, Doug Hennion, Ken Armstrong.

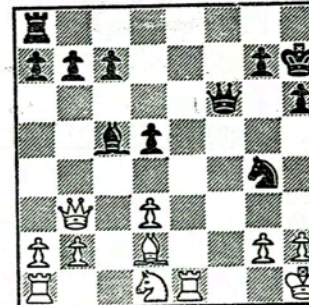
BOARD TROPHIES

- Board 1 - Peter Thiel, Laurel.
- Board 2 - Ron Gustafson, Audubon.
- Board 3 - Jeffrey Bucketial, Audubon.
- Board 4 - Kevin Koo and Dell Taylor, Audubon.
- Board 5 - Glen Schubert, Audubon.

Mate in 5



No. 1 White to move



No. 2 Black to move

Mate in 3
 Solutions on page 2

OLD FAVORITES

- | White Morphy | Black Allies |
|---------------|--------------|
| 1. P-K4 | P-K4 |
| 2. N-KB3 | P-Q3 |
| 3. P-Q4 | B-N5 |
| 4. PxP | BxN |
| 5. QxB | PxP |
| 6. B-QB4 | N-KB3 |
| 7. Q-QN3 | Q-K2 |
| 8. N-B3 | P-B3 |
| 9. B-KN5 | P-QN4 |
| 10. NxP | PxN |
| 11. BxNP ch | QN-Q2 |
| 12. O-O-O | R-Q1 |
| 13. RxN | RxR |
| 14. R-Q1 | Q-K3 |
| 15. BxR ch | NxB |
| 16. Q-N8 ch | NxQ |
| 17. R-Q8 mate | |

This game was played in Paris 1856. No doubt the opposition was weak, but Morphy with sharp play took quick advantage.

 On page 3 is the first of 5 articles on the history of chess which was written by A.E. Montgomery of Hillsborough. Mr. Montgomery is a noted chess researcher and chess historian, and a long time member of the San Mateo Chess Club.

To make this a better paper members are invited to tell the editor what type of articles they would like in their chess club paper. Since most members are average type players this paper will take that direction for now.

Chess anyone ?

I will study and get ready and perhaps my chance may come

Abraham Lincoln - 1830



CHESSE TRAPS # 1

QUEENS GAMBIT DECLINED
CAMBRIDGE SPRINGS VARIATION

1. P-Q4 P-Q4
2. P-QB4 P-K3
3. N-QB3 N-KB3
4. B-N5 QN-Q2
5. P-K3 P-B3
6. N-KB3 Q-R4

2
1. --- Q-R5
2. P-KR3 Q-N6
3. any Q-R4
mate

This is the Cambridge Springs Variation
White can play 6.PxP to avoid playing
against this defence

7. Q-B2

7.N-Q2 is best

8. B-Q3 N-K5
9. R-QB1 NxB
10. NxN PxP

And Black wins a piece

Note : If 9. BxN PxP wins a piece

If any member has information or games they
would like published in the club newspaper
see, Schoene , the big guy with the crewcut.

County Championship Scheduled for March

Countywide chess championships will be held in March for youngsters in all San Mateo County schools from kindergarten through high school.

Competition for kindergarten-through-sixth-grade players will be held March 11 at Laurel School in San Mateo during similar hours.

Playing for the sixth-through-eighth-grade youngsters will be held March 11 at Abbott School in San Mateo.

Three separate contests will be sponsored by the San Mateo-Burlingame Chess Club and hosted by the San Mateo City Elementary School District and the Burlingame Recreation Department.

Schools are invited to send five-member teams for the lower grades and three-member teams for high school age groups.

Trophies will be awarded to best team chess players in three groups: kindergarten through sixth grade, sixth through eighth grade, and ninth through twelfth grade.

Individuals may compete by contacting: "Tournament Coordinator, 3512 Michael Drive, San Mateo 94403."

Doris J. Coloma of San Mateo, representing the Chess Club, said the high-school-age tourney will be held March 4 at the Burlingame Recreation Center from 9 a.m. until about 2:30 p.m.

Persons wishing to enter the contest will be assigned to a team position, said Mrs. Coloma. All competitors will be awarded certificates of participation.

THE IMMORTAL GAME

London, 1851

White: A. Anderssen

Bishop's Gambit

Black: L. Kieseritzky

1. P-K4 P-K4
2. P-KB4 PxP
3. B-B4 Q-R5ch.
4. K-B1 P-QN4
5. BxP N-KB3
6. N-KB3 Q-R3
7. P-Q3 N-R4
8. N-R4! Q-N4
9. N-B5 P-QB3
10. P-KN4 N-B3
11. R-N1!

no. 1
1. Q-R7ch K-B1
2. Q-R8ch K-K2
3. Rxpch KxR
4. B-N6ch Kany
5. Q-K7 or R4
mate

A surprising sacrifice of the

Bishop...

11. PxP

Which Black should not have
accepted!

12. P-KR4 Q-N3
13. P-R5 Q-N4
14. Q-B3

With two murderous threats:

- 15 BxP winning the Queen, and 15
P-K5 attacking Knight and Rook.
14. N-N1

15. BxP Q-B3
16. N-B3 B-B4
17. N-Q5! QxP
18. B-Q6!! BxR
19. P-K5!!

White offers another Rook. It was important to keep the Q from returning to the defense. The text move also has the purpose of cutting off the Q from the protection of the N pawn.

19. QxRch
20. K-K2

Black is now two Rooks and a Bishop ahead, but his game is hopeless!

20. N-QR3
21. Nxpch K-Q1
22. Q-B6ch! NxQ
23. B-K7 mate

your dues are past due

WILFRED G. GOODWIN
413 Cornish Way
Belmont, California 94002



R Blaine

P.O. Box 532

Indianapolis

In

46206