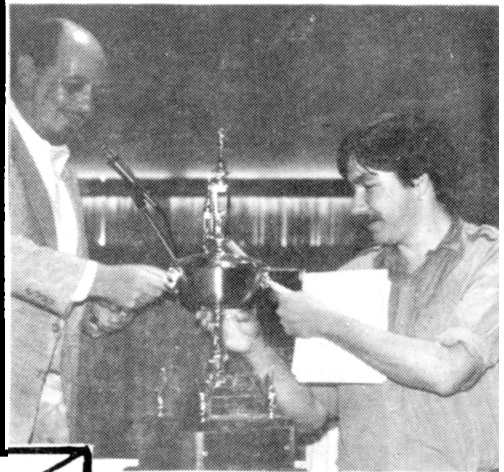
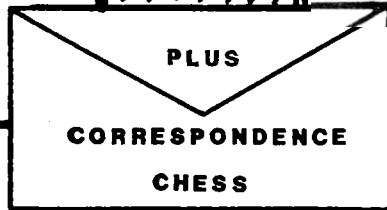
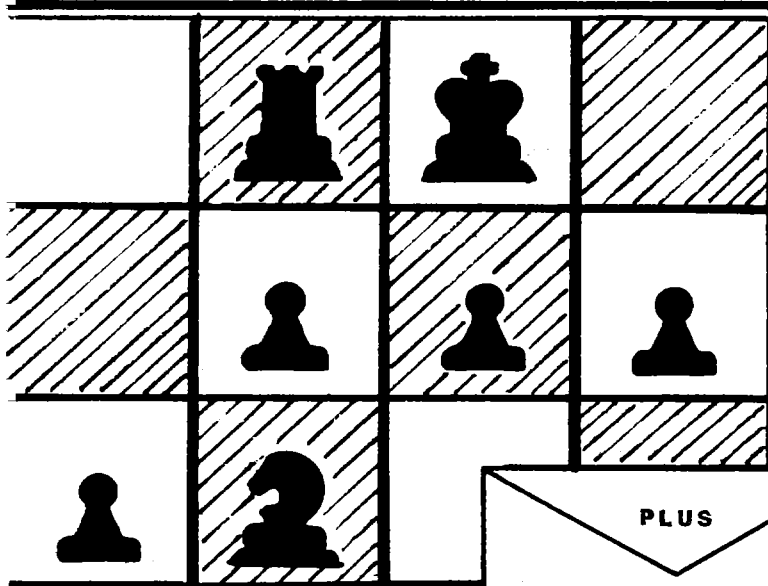


CALIFORNIA CHESS JOURNAL

VOL. 1 # 1 OCTOBER 1986 \$1



U.S. OPEN CHAMPION
GRANDMASTER
LARRY CHRISTIANSEN

receiving his \$ 5000.00 check
and the FIDELITY CUP from
the Fidelity International
President.

THIS ISSUE :
ROOK SACRIFICE part I
U.S. OPEN REPORT
ARNOLD DENKER ANNOTATES

Celebrate NATIONAL CHESS DAY October 4

2

The California Chess Journal
is published monthly.

To subscribe send check or
money order to:

Calif. Chess Journal
Hans Poschmann
4621 Seneca Park Ave.
Fremont CA 94538

Subscription price : \$ 9.00
for one year (12 issues).

This is an introductory offer.

CONTENTS :

U.S. OPEN pg. 3

Arnold Denker Tnmt. pg. 13

The ROOK SACRIFICE pg. 14

San Jose City College Open
pg. 16

POSTAL CHESS pg. 17

Stalemate pg. 18

Club directory - Backpage

CALENDER - Backpage

Chessfriends :

This is a fresh approach to Chess
Journalism in California.

There will be differences from past
ventures :

- 1) Available through subscription
only - California memberships
not included.
- 2) Monthly publication
- 3) Edited by several excellent play-
ers covering all aspects of the
game as well as tournament re-
sults, questions and answers,
tournament calender, club direc-
tory, the latest news and a Postal
Department.

The magazine will be dedicated
to the improvement of
chess skill.

We will also try to serve the
local organizer and hope that he
will return the ball by helping to
make this the best State Magazine.

The first issue comes to you free of
charge. If you like what you see and
decide to subscribe, please send a
check in the amount of \$ 9.00 to the
California Chess Journal today !!

You can cancel your subscription
any time and the unused portion of
your money will be returned.

GM Larry Christiansen wins U.S. OPEN

534 Players competed in a very strong tournament at the Somerset, New Jersey Hilton.

32 of 98 Masters had ratings above 2400.

Among the more distinguished participants were former World - Champion GM Boris Spassky, U.S. Champion GM Lev Alburt, World Championship Candidate GM Alexander Chernin from the Soviet Union and Soviet Champion GM Vitaly Cseschkovsky.

GM Larry Christiansen scored 10 points followed by GM Boris Spassky, IM Michael Rohde, IM Michael Wilder, GM Lev Alburt, IM Victor Frias and GM Alexander Chernin with 9 1/2 points.

10 Players tied for the under 2400 prizes with 8 1/2 points. 6 Experts scored 8 points. For first A you needed 7 1/2 points, first B 7 points, first C 6 points, first D 5 points and first unrated 7 points.

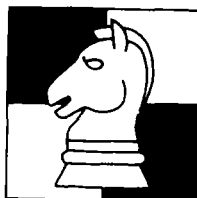
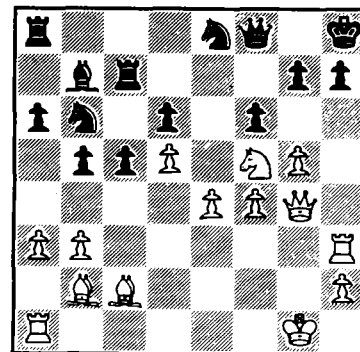
Next year's U.S. Open will be held in Portland, Oregon.

Following are sample Games selected by Val Zemitis

Round 1

White : IM J. Federowicz
Black : R. Ribiero (ELO 1955)
Queen's Indian Defense

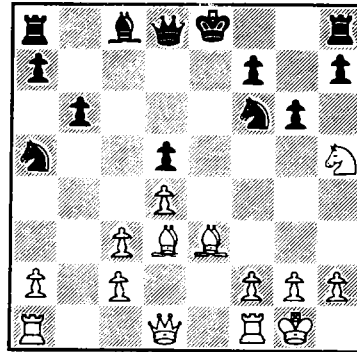
1. d4 Nf6 2. c4 e6 3. Nf3 b6 4. a3 Bb7
5. Nc3 Be7 6. d5 0-0 7. e4 ed5 8. cd5
d6 9. Bd3 Nbd7 10. Nd4 Ne5 11. Bc2
c5 12. Nf5 Re8 13. Ne7:ch Qe7: 14. 0-0
a6 15. Ne2 Nh5 16. f4 Nd7 17. g4 Nhf6
18. Ng3 Kh8 19. b3 b5 20. Bb2 Rec8
21. g5 Ne8 22. Nf5 Qf8 23. Qg4 Nb6
24. Rf3 f6 25. Rh3 Rc7 see diagram
26. Rh7:ch 1-0



Round 2

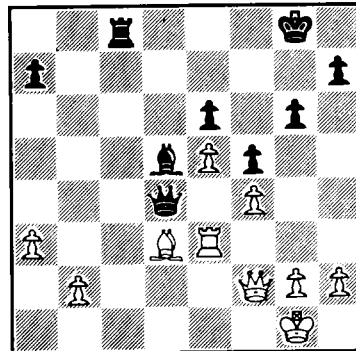
White : GM B. Spassky
 Black : D. Hepner (ELO 2164)
 Sicilian Defense

1. e4 c5 2. Nc3 e6 3. Nge2 d5
 4. ed5 ed5 5. d4 Nf6 6. Be3 b6
 7. Nf4 c4 8. Bc4: Bb4 9. Bd3 Nc6
 10. 0-0 Bc3: 11. bc3 Na5 12. Nh5 g6
 see diagram 13. Bg5 gh5 14. Qf3 Bg4
 15. Qf4 Qb8 16. Qf6: 1-0



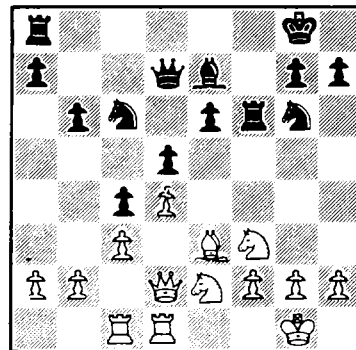
White : W. Buehl (ELO 2142)
 Black : GM A. Chernin
 Nimzo Indian Defense

1. d4 Nf6 2. c4 e6 3. Nc3 Bb4
 4. e3 0-0 5. Bd3 c5 6. Nf3 b6
 7. 0-0 Bb7 8. Bd2 cd4 9. ed4 Be7
 10. Re1 d5 11. cd5 Nd5: 12. Nd5:
 Bd5: 13. Ne5 Nd7 14. Qh5 f5 15. Re3
 Ne5: 16. de5 g6 17. Rg3 Rf7 18. Qe2
 Bh4 19. Rh3 Rc8 20. f4 b5 21. Be3
 Rfc7 22. Rd1 Be7 23. Bb5: Rc2
 24. Rd2 Rclch 25. Rd1 Rd1:ch 26. Qd1:
 Qa5 27. Bd3 Bc5 28. a3 Be3:ch
 29. Re3: Qb6 30. Qd2 Qd4 31. Qf2
 see diagram 31.....Rclch 32. Bf1 Bc4
 33. Rel Rel: ! 0-1



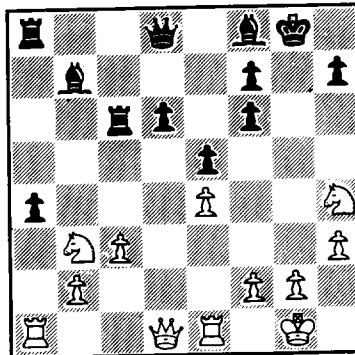
White: G. Kitts (ELO 2134)
 Black : GM B. Gulko
 French Defense

1. e4 e6 2. d4 d5 3. Nd2 b6 4. e5
 Qd7 5. Ndf3 c5 6. c3 Ne7 7. Bd3 Ba6
 8. Ne2 Bd3: 9. Qd3: Nbc6 10. 0-0
 Ng6 11. Be3 Be7 12. Rac1 0-0
 13. Rfd1 c4 14. Qc2 f6 15. ef6 Rf6
 16. Qd2 see diagram 16....Rf3:
 17. gf3 Nh4 18. Qc2 e5 0-1



Cseshkovsky - Rademacher cont.

Nf6 5. 0-0 b5 6. Bb3 Be7 7. Re1 d6
8. c3 0-0 9. h3 Re8 10. d4 Bf8 11. Nbd2
Bb7 12. Bc2 a5 13. d5 Nb8 14. a4 ba4
15. Ba4: c6 16. Nb3 Re7 17. Bg5 Rc7
18. dc6 Nc6: 19. Bc6: Rc6: 20. Bf6: gf6
21. Nh4 a4 See diagram 22. Nf5 ab3
23. Ra8: Qa8: 24. Re3 Rc3: 25. Rc3:
Be4: 26. Rg3ch Kh8 27. Qg4 Bh6 28. Nh6:
Qalch 29. Kh2 Bg6 30. Qc8ch Kg7
31. Nf5 mate 1-0



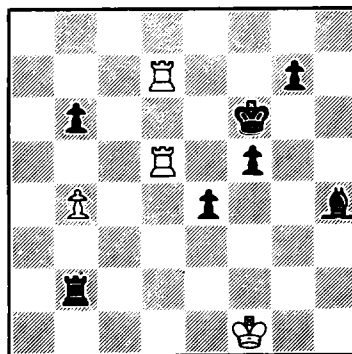
Round 4

White : G. Kramer (ELO 2365)

Black : GM A. Chernin

French Defense

1. e4 e6 2. d4 d5 3. Nd2 Nf6 4. e5 Nfd7
5. Bd3 c5 6. c3 Nc6 7. Ne2 cd4 8. cd4
f6 9. Nf4 Nd4: 10. Qh5ch Ke7 11. ef6ch
Nf6: 12. Ng6ch hg6 13. Qh8: Kf7 14. 0-0
e5 15. Nb3 Nb3: 16. ab3 Bf5 17. Bf5:
gf5 18. Bg5 Bc5 19. Qh4 Qd6 20. Bf6:
Qf6: 21. Qf6:ch Kf6: 22. Ra5 b6 23. Ra6
e4 24. Rf1 Rc8 25. Kf1 Bb4 26. Ra7:
Rc2 27. Rd1 Bc5 28. b4 Rf2:ch 29. Kel
Be3 30. Rd5: Rg2: 31. h4 Rb2: 32. Rad7
Bf2ch 33. Kf1 Bh4: See diagram
34. R7d6ch Kg5 35. Rb6: Kf4 36. Rg6 e3
0-1



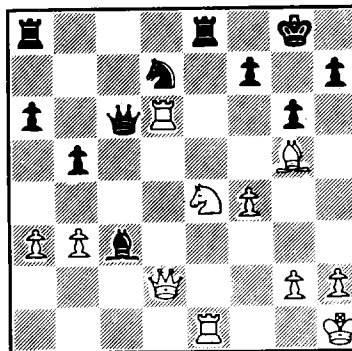
Round 5

White : GM L. Christiansen

Black : FM S. Rachels (ELO 2485)

Benoni Defense

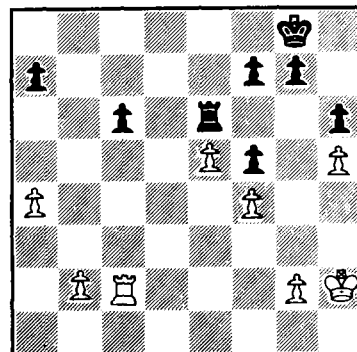
1. d4 Nf6 2. c4 c5 3. d5 d6 4. Nc3 g6
5. e4 Bg7 6. Bg5 0-0 7. Qd2 e6 8. Bd3
ed5 9. Nd5: Be6 10. Ne2 Bd5: 11. cd5
c4 12. Bc2 Nbd7 13. 0-0 Nc5 14. Nc3
Re8 15. Rael a6 16. Kh1 b5 17. a3 Qb6
18. f4 Nfd7 19. e5 de5 20. d6 Nd3
21. Bd3:Qd6: 22. Rf3 e4 23. Ne4: Qd4
24. Rfe3 cd3 25. Rd3: Qc4 26. b3 Qc6
27. Rd6 Bc3 See diagram 28. Qd3 Qd6:



White : IM V. Frias
 Black : IM W. Shipman (ELO 2401)

Slav Defense

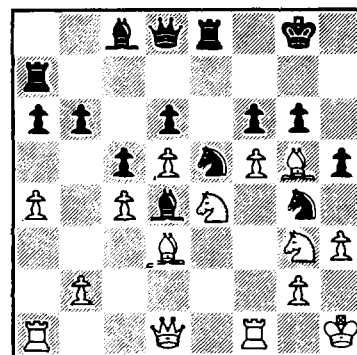
1.d4 d5 2.c4 c6 3.Nc3 Nf6 4.Nf3 dc4
 5.a4 Na6 6.e4 Bg4 7.Bc4: e6 8.0-0 Be7
 9.Be3 0-0 10.Be2 c5 11.Rc1 cd4 12.Nd4:
 Be2: 13.Qe2: Nb4 14.Rfd1 Qb8 15.Bg5
 Rd8 16.Ncb5 Rd7 17.e5 Nfd5 18.Be7: Ne7:
 19.Nd6 Nbc6 20.Nc6: bc6 21.h4 Qb3
 22.Rc4 Rad8 23.Rld4 h6 24.h5 Nf5 25.Nf5:
 ef5 26.Rd7: Rd7: 27.Kh2 Re7 28.f4 Re6
 29.Qc2 Qc2: 30.Rc2: See diagram 30...Kf8
 31.Rc5 Ke8 32.b4 Kd8 33.Kh3 Kc7 34.g4
 fg4ch 35.Kg4: Kb6 36.f5 Re8 37.a5ch Kb7
 38.Kf4 a6 39.Rc3 Rh8 40.Rg3 Rh7 41.e6
 Kc7 42.ef7 Rh8 43.f6 g5 44. hg6 1-0



White : GM B. Gulko
 Black : A. Sherzer (ELO 2348)

Modern Benoni Defense

1.d4 Nf6 2.c4 c5 3.d5 d6 4.Nc3 g6
 5.e4 Bg7 6.Bd3 0-0 7.Nge2 e6 8.h3 ed5
 9.ed5 Re8 10.0-0 Nbd7 11.f4 a6 12.a4 b6
 13.Bd2 Ra7 14.Ng3 h5 15.f5 Ng4 16.Nce4
 Bd4ch 17.Kh1 Nde5 18.Bg5 f6 See diagram
 19.Nf6: ch Nf6: 20.fg6 Rf8 21.Nh5: Nh5:
 22.Qh5: Nd3 23.Bd8: Rd8: 24.Rf7 Rf7:
 25.gf7ch Kf8 26.Qg5 1-0

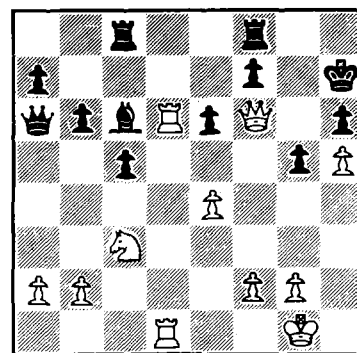


Round 8

White : IM K. Shirazi
 Black : IM J. Fedorowicz

King's Indian Defense

1.c4 Nf6 2.Nf3 g6 3.Nc3 Bg7 4.e4 c5
 5.d4 d6 6.dc5 Qa5 7.Bd3 dc5 8.0-0 Nc6
 9.h3 Nd7 10.Nd5 e6 11.Bf4 Nde5 12.Ne5:
 Ne5: 13.Re1 Qd8 14.Bf1 0-0 15.Nc3 b6
 16.Qc1 Nd3 17.Bd3: Qd3: 18.Bh6 Qc4:
 19.Bg7: Kg7: 20.Qf4 Bb7 21.Rad1 Bc6
 22.Qe5ch Kg8 23.Qf6 h6 24.h4 Kh7
 25.h5 g5 26.Rd6 Rac8 27.Red1 Qa6
 See diagram 28.Rc6: Rc6: 29.Rd7 Qc8
 30.Qg6ch Kh8 31.Qh6: ch 1-0



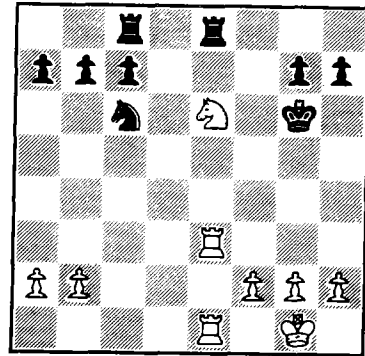
Round 9

White : GM L. Alburt

Black : GM B. Gulko

Queen's Gambit Accepted

1.d4 d5 2.c4 dc4 3.e4 Nf6 4.e5 Nd5
 5.Bc4: Nb6 6.Bb3 Nc6 7.Nf3 Bg4
 8.Bf7:ch Kf7: 9.Ng5ch Ke8 10.Qg4: Qd4:
 11.Qe2 Qe5: 12.Be3 Nd5 13.Nf3 Qf5
 14.0-0 e6 15.Nc3 Rd8 16.Rfel Be7
 17.Bd2 Nc3: 18.Bc3: Kf7 19.Qc4 Bf6
 20.Re3 Bc3: 21.Ng5ch Kg6 22.Qc3:
 Rhf8 23.Rf3 Qd3 24.Rg3 Qdlch 25.Qel
 Qel:ch 26.Rel: Rfe8 27.Ne6:ch Kf6
 28.Rf3ch Kg6 29.Rfe3 Rdc8 See diagram
 30.h4 Re7 31.h5ch Kh5: 32.Rg3 Rf8
 33.Re4 1-0



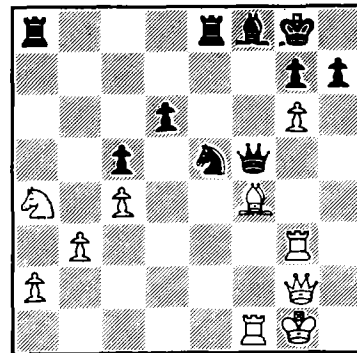
Round 10

White : GM A. CHERNIN

Black : GM L. ALBURT

English

1.c4 Nf6 2.g3 c5 3.Bg2 e6 4.Nf3 Be7
 5.0-0 0-0 6.d4 cd4 7.Nd4: a6 8.b3 Ra7
 9.e4 d6 10.Qe2 Qc7 11.Be3 Ra8 12.Nc3
 Nbd7 13.Racl Re8 14.h3 Bf8 15.g4 Nb8
 16.f4 Nc6 17.Nc6: bc6 18.g5 Nd7 19.h4
 Bb7 20.Qf2 c5 21.h5 Bc6 22.f5 Ne5
 23.Qg3 a5 24.Bf4 a4 25.g6 ef5 26.ef5
 Bg2: 27.Qg2:fg6 28.hg6 Qd8 29.Na4: Qh4
 30.Rc3 Qg4 31.Rg3 Qf5: See diagram
 32.Bh6 Qe6 33.gh7ch Kh8 34.Rf8:ch Rf8:
 35.Bg7:ch Kh7: 36.Bf8: 1-0

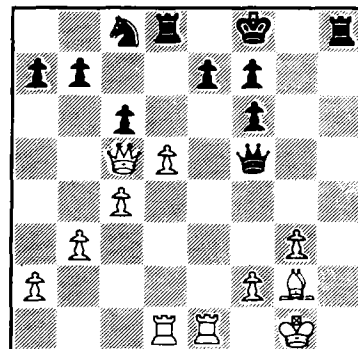


White : FM D. LONDON

Black : GM A. DENKER

CARO-KANN DEFENSE

1.e4 c6 2.d4 d5 3.Nd2 de4 4.Ne4: Nf6
 5.Nf6:ch gf6 6.Nf3 Bf5 7.c3 Qc7 8.Qe2
 h5 9.g3 Bh6 10.Bh6: Rh6: 11.Bg2 Nd7
 12.0-0 Rh8 13.Rfel Nb6 14.c4 Bg4
 15.Rad1 Kf8 16.b3 h4 17.Qe4 Bf3:
 18.Qf3: hg3 19.hg3 Rd8 20.Qf5 Qd7 21.Qc5
 Nc8 22.d5 Qf5 See diagram 23.dc6 Qc5:

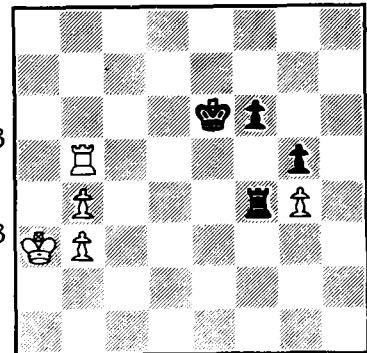


London - Denker cont.

24.Rd8:ch Kg7 25.Rh8: Nd6 26.cb7 Nb7: 27.Re8 e6 28.Bb7: Qb4
29.Rd1 Qb7: 30.Red8 a5 31.R8d7 Qf3 32.R7d3 Qc6 33.Rc3 Qc5
34.a3 f5 35.Rb1 e5 36.b4 Qd4 37.Rccl ab4 38.ab4 Qg4 39.c5
f4 40.c6 e4 41.c7 e3 42.c8-Q Qe2 43.Rf1 1-0

White : GM D. GUREVICH
Black : GM V. CSESHKOVSKY
ENGLISH

1.Nf3 Nf6 2.c4 c5 3.Nc3 d5 4.cd5 Nd5:
5.e4 Nb4 6.Bb5ch N8c6 7.d4 cd4 8.a3 dc3
9.Qd8:ch Kd8: 10.ab4 c2 11.Bc6: bc6
12.Ne5 Ke8 13.Kd2 g5 14.Kc2: f5 15.Re1
a6 16.ef5 Bf5:ch 17.Kc3 h6 18.Nc6: Bg7ch
19.Kb3 Bf6 20.Bd2 Kf7 21.Ra5 Be6ch
22. Ka3 Rhc8 23.Rc5 Rc7 24.Bc3 Rd7
25.f3 Rd6 26.Bf6: ef6 27.Re4 Rd3ch 28.Rc3
Rd2 29.g4 Rh2: 30.Nd4 Bd5 31.Rc7ch Kf8
32.Ree7 Rc8 33.Rf7ch Bf7: 34.Rc8:ch Ke7
35.Rc7ch ke8 36.Ra7 Rd2 37.Nf5 Bc4 38.b3
Bb5 39.Rh7 Rd3 40.Rh6: Kf7 41.Rh7ch Kf8
42.Rb7 Rf3: 43.Rb8ch Kf7 44.Nd6ch Ke6
45.Nb5: ab5 46.Rb5: Rf4 See diagram
47.Rc5 Rg4: 48.b5 Rd4 49.b6 Rd8 50.Kb4
g4 51.Kb5 g3 52.Rc3 g2 53.Rcl f5 54.Rg1
Kd7 55.Rg2: Kc8 56.Ka6 Kb8 57.Rg7 f4
58.Rf7 f3 59.Rf3: Rh8 60.Rf6 Rg8 61.b7 1-0

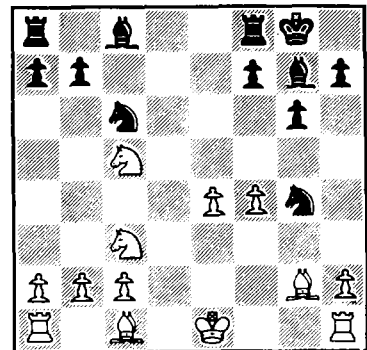


Round 11

White : M. ARDAMAN (ELO 2393)

Black : IM V. FRIAS
CARO-KANN DEFENSE

1.g3 d5 2.Bg2 c6 3.f4 g6 4.d3 Bg7 5.e4
de4 6.de4 Qd1:ch 7.Kd1: e5 8.Nf3 ef4
9.gf4 Nf6 10.Ne5 0-0 11.Nc3 Ng4 12.Nd3
c5 13.Ke1 Nc6 14.Nc5: See diagram
14. ... Nb4 15.Kd2 Rd8ch 16.Nd3 Nf2
17.Rf1 Nfd3: 18.cd3 Rd3:ch 19.Ke2 Bg4ch
20.Bf3 Rf3: 0-1

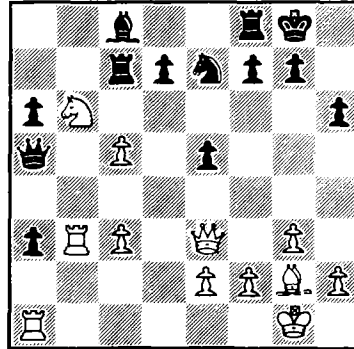


White : GM B. GULKO

Black : FM D. SHAPIRO (ELO 2385)

Nimzo Indian Defense

1.d4 Nf6 2.c4 e6 3.Nc3 Bb4 4.g3 0-0
 5.Bg2 c5 6.Nf3 cd4 7.Nd4: Nc6 8.0-0 a6
 9.Bf4 Qe7 10.Nc2 e5 11.Bg5 Bc3: 12.bc3
 h6 13.Bf6: Qf6: 14.Ne3 b5 15.Nd5 Qd8
 16.c5 Ra7 17.a4 Qa5 18.Qd3 ba4 19.Qe3
 Rb7 20.Nb6 a3 21.Rfb1 Rc7 22.Rb3 Ne7
 See diagram 23.Na8 Qc5: 24.Nc7: Qc7:
 25.Raa3:d5 26.Qb6 Qc4 27.Bf1 Qe4
 28.Qc5 Re8 29.Rb8 d4 30.cd4 Nc6
 31.Re3 Qg6 32.Rb6 Bd7 33.d5 1-0

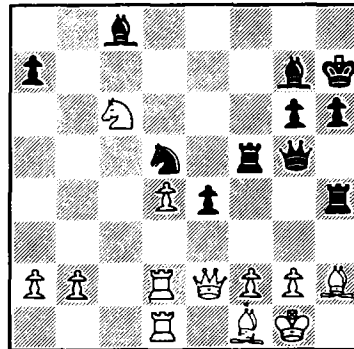


White : G. NUTE (ELO 2104)

Black : FM K. LARSEN (ELO 2317)

Pirc Defense

1.Nf3 g6 2.d4 Bg7 3.Bf4 d6 4.e3 Nd7
 5.h3 c6 6.c3 Ngf6 7.Be2 0-0 8.0-0 h6
 9.Nbd2 Kh7 10.Qc2 Ne8 11.Bh2 e5
 12.Rad1 f5 13.de5 de5 14.Nc4 Qe7
 15.Rd2 e4 16.Nd4 Ne5 17.Rfd1 Nc7
 18.Qb3 Nd5 19.Na5 f4 20.ef4 Rf4:
 21.Bc4 Bh3: 22.Qb7: Qg5 23.Bf1 c5
 24.Nac6 cd4 25.Ne5: Raf8 26.cd4 Bc8
 27.Qb5 Rh4 28.Nc6 Rf5 29.Qe2 See
 diagram 29. ...Ba6 30.Qa6: Qh5
 31.f3 e3 0-1



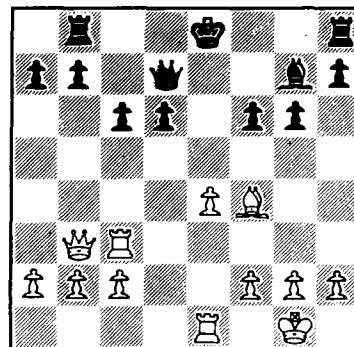
Round 12

White : ANDREW KARKLINS (ELO 2313)

Black : A. VOLOVICH (ELO 2441)

Ruy Lopez

1.e4 e5 2.Nf3 Nc6 3.Bb5 g6 4.d4 ed4
 5.Bg5 f6 6.Bf4 Bg7 7.0-0 Nge7 8.Re1
 d6 9.Nd4: Bd7 10.Bc4 Nd4: 11.Qd4:
 Nc6 12.Qd2 Qe7 13.Nc3 Ne5 14.Nd5
 Nc4: 15.Qc3 Qd8 16.Qc4: Bc6 17.Rad1
 Rc8 18.Rd3 Bd5: 19.Qd5: Rb8 20.Rc3
 c6 21.Qb3 Qd7 See diagram 22.Rc6: !
 bc6 23.Qb8:ch Ke7 24.Qb3 Rd8 25.Rd1
 d5 26.ed5 cd5 27.Be3 f5 28.Bg5ch Bf6
 29.Qe3ch 1-0



ARNOLD DENKER TOURNAMENT of HIGH SCHOOL CHAMPIONS

The tournament, a six round Swiss, was run concurrently with the US Open and drew participants from about 40 different States.

Danny Edelman, NY, (ELO 2402) won with 5 points, followed by Vivek Rao, PA (ELO 2433) and Ilya Gurevich, MA, (ELO 2430) with 4 1/2 points. 4th to 6th Place went to Tim Rademacher, MN, (ELO 2235), Ben Finegold, MI, (ELO 2437) and Joe Waxman, CA, (ELO 2259) with 4 points. Peter Yu, who represented N.-California with a rating of 2068 could achieve 2 1/2 points. Remember these are High School kids !

The following game was annotated by GM Arnold Denker:

I chose this game for two reasons: -- 1. It is a very wild, wide open game and 2. it was the key game that won the tournament for Edelman since his closest competitor V. Rao was held to a draw by Rademacher.

White : T. Rademacher
Black : D. Edelman
King's Indian Defense

1. d4 Nf6 2. c4 g6 3. Nc3 Bg7
4. Nf3 0-0 5. g3 d6 6. Bg2 Nc6
7. 0-0 a6 8. h3 Rb8 9. a4 e5
10. d5 Ne7 11. e5

Up to this point we have the usual King's Indian seen hundreds of times, but this move is very aggressive and after 11. ...dc5 12. Ne5: Ned5: 13. Nf7: and White stands better. 11. ... Nd7 12. cd6 cd6 13. e4 h6 14. Nh4 b5 15. ab5 ab5 16. Be3 16. b4 - fixing the black pawn on b5 and preventing Nc5 would have been better. 16. ... b4 17. Na2 ? Very weak. The N should return to b1 so that it can go to d2 and then b3 or c4. 17. ... Nc5 Here 17. ... f5 is more normal. 18. Bc5: dc5 19. Re1 Qd6 20. g4 20. Nc1 in order to free the Queen's Rook was better. 20. ... Ra8 Now we see how misplaced the Knight is. 21. Qb3 Here Bf1 followed by Bc4 would have been stronger. Note black cannot play Nd5: because of Qd5: attacking the rook. 21. ... Bd7

22. Rab1 Qa6 23. Ral Only move since Nc1 would be followed by Ba4 and Bc2 winning material. 23... Qb6 23. ... Rfb1 would have maintained the pressure better. 24. Nc3 ? Loses a piece. 24. ... c4 25. Qc4: bc3 26. bc3 Rfc8 27. Ra8: Ra8: 28. Rdl Rc8 29. Qa2 Rc3: 30. d6 Nc6 31. Ng6: Rb3 32. Ne7ch Kh7 Not Kf8 because 33. Ne6: Rb2 34. Qa8ch Be8 35. Qe8:ch Ke8: 36. d7ch Ke8 37. d8-Qch mates. 33. Nc6: Rb2 34. Qf7: Qc6: 35. h4 Rb8 36. g5 Now 36. h5 would make life difficult for black. The threat being Qcheck followed by g5. 36. ... Rf8 37. Qe7 h5 38. g6ch Kg6: 39. Qg5ch Most interesting would be 39. Rd3 threatening Rg3ch there might then follow Qc1ch 40. Kh2 Qf4ch 41. Rg3ch Bg4 42. f3 and black can no longer demonstrate a win. 39. ... Kh7 40. Qh5ch Kg8 41. Qg5 Rf4 42. h5 Rg4 43. Qd8ch Kh7 44. Kh2 44. f3 would be followed by Qc2 45. fg4 Qd1:ch 46. Kh2 Qg4: and wins. However after 44. f3 Rg2:ch only draws. 44. . Rg2: 45. Kg2: Qe4: ch Now it's all over. White resigns after six more checks.

The Rook Sacrifice in Correspondence Chess , Part 1

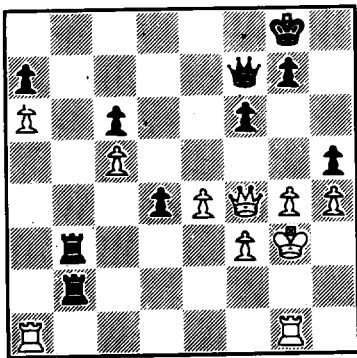
by Erik Osbun

The correct sacrifice of a Rook is one of the most direct and forceful ways of bringing the chess game to a successful conclusion. Usually the Rook sacrifice occurs as the culmination of a winning maneuver or becomes realistic as the result of an error by the opponent. In most cases the Rook sacrifice leads to the recuperation of at least the exchange and usually more within a few moves. The moves are not especially difficult to calculate. The foregoing characterizes a Rook sacrifice of the first kind.

In order to set up or avoid the Rook sacrifice, the task is to see it coming. This applies to over the board chess as well as postal play, but usually the Rook sacrifice can be sensed within a general positional understanding over the board and carefully planned and calculated for assurance in postal play. Two examples of the first kind of Rook sacrifice follow:

Diagram 1.

From the game CHOU - OSBUN,
C. C. L. A. National Team
Champ. IV, 1985 - 86.



39. Rad1 ?

White overlooks the threat. Needed was 39. Raf1, whereupon Black would continue 39. ... Rc3 using his superiority of position to grab a Pawn or two. After all, the White Rook is tied to the f-Pawn's defense, and 40. Qd6 Qg6! is dangerous for White.

39. ... Rxf3ch !

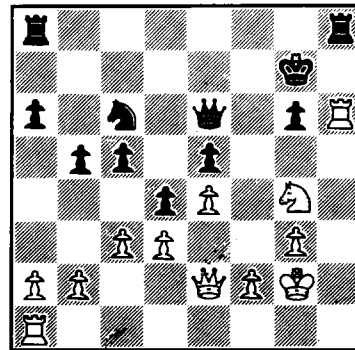
40. Resigns

Since 40. Kxf3 Qb3ch and

40. Qxf3 Qc7ch 41. Qf4 (41. Kh3 Q or Rh2 mate) Rb3ch are clearly lost.

Diagram 2.

From the game OSBUN - ENDSLEY,
7th U. S. C. C. C.
Preliminaries, 1985 - 86.



29. Rahl !

White uses all his options, since 29. Rxh8 Rxh8 30. f3 seems a very slow way to make good an advantage

conferred by the extra Pawn. If Black now regains his Pawn by 29. ... Qxa2 ?, then 30. Rxh8 Rxh8 31. Rxh8 Kxh8 32. Qf3 Qe6 33. Qf8ch Kh7 34. Nf6ch wins quickly for White.

29. ... Rxh6
30. Rxh6 Qxa2 ?

Best is 30. ... Rh8 31. Rxh8 Kxh8 32. a3 c4 ! ? 33. Nh2, but White maintains his extra Pawn. Instead, Black falls into a trap !

31. c4 !

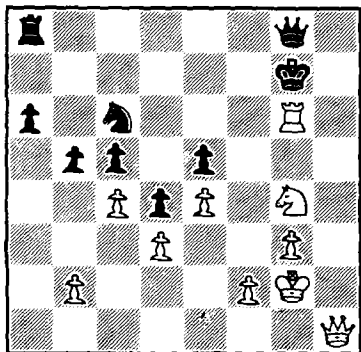
Locking out the Black Queen. Now 31. ... bc 32. Qf3 Rf8 33. Rh7ch or 31. ... Rf8 32. Qd2 Rf7 33. Qg5 give White a decisive attack.

31. Qa5
32. Qd1 !

Not 32. Qf3 ? Qd8 33. Rh7ch Kxh7 34. Qf7ch Kh8 35. Nf6 Ra7 ! 36. Qxg6 Qf8, and Black is winning.

32. Qd8
33. Qh1 Qg8
34. Rxc6ch !

Diagram 3. Final position



The Rook sacrifice crowns White's plan, or trap, if you prefer. Black resigns, since 34. ... Kxg6 35. Qh6ch Kf7 36. Qf6ch Ke8 37. Qxc6ch Ke7 38. Qc7ch Kf8 39. Qd6ch Kg7 40. Qf6ch Kh7 41. Qh6 mate. Deviation from this line at any point allows the Knight fork royale.

Part 2. of this article will be published in next month's issue.

Erik Osburn is the editor of this department and inquiries should be directed to his address:

220 Mariposa
Ridgecrest CA 93555

He will also edit the

"Question and Answer"

Column. So, if you have any questions, please feel free to use this opportunity and write to him.

DEATH MATES HENRY

Robert Lee Henry, 42, a long time member of the local chess scene, died early in August after a long bout of illness.

Mostly known throughout the Bay Area as a discount seller of chess books, clocks and tournament equipment, Bob was able to play a pretty mean game, also.

He will be missed by all.

9 - 1 - 86 PRIZES " 21st San Jose City College Open "

Reported by Francisco & Amada Sierra

<u>Masters</u> ;	1st/3rd	Jay Whitehead (2498), San Francisco;	5-1
		Elliott Winslow (2462), San Francisco;	\$ 416.67 ea.
		Guillermo Rey (2359), San Francisco;	
	4th/5th	Cris Ramayrat (2533), San Francisco;	4 1/2-1 1/2
		Renard Anderson (2314), Aptos;	\$ 125 each
<u>Experts</u> :	1st/3rd	Daniel Switkes (2165), Lafayette;	4-2
		Ira Pohl (2162), Santa Cruz;	\$ 209.67 ea.
		Peter Thiel (2046), Foster City;	
	4th/12th	Donald Urguhart (2182), San Jose;	3 1/2 - 2 1/2
		Izrail Rabinovich (2161), Pacific Grove;	\$ 15.63 each
		Tom Reikko (2148), Sacramento;	
		Randall Hough (2143), Stockton;	
		Allen Becker (2115), San Mateo;	
		David Moulton (2056), San Francisco;	
		Nathan Akamine (1926), San Jose;	
		John Simpson (1918), Milpitas;	
"A"	1st	Kash Patel (1889), San Jose;	5-1 \$ 222.00
	2nd/5th	Arcangelo Castaldo (1911), Sunnyvale;	4 1/2 - 1 1/2
		Robert Hicks (1851), Yountville;	\$ 77.71 each
		Anthony Raymond (1805), San Francisco;	
		Todd Morimoto (1742), San Jose;	
"B"	1st	Virgilio Fuentes (1797), S. San Francisco;	5-1 \$ 148.00
	2nd/5th	Martin Weteschnik (1774), San Francisco;	4 1/2 - 1 1/2
		Michael Hutchinson (1772), San Francisco;	\$ 62.92 each
		Michael Dutch (1764), San Jose;	
		Sean Mulligan (1683), Morgan Hill;	
"C"	1st	Dana Albrecht (1514), San Jose;	5-1 \$ 111.00
	2nd/4th	John Juan (1589), San Jose;	4-2
		Denny Ura (1467), Salinas;	\$ 59.22 each
		Laurena Estavan (1447), Redwood City;	
	5th	Todd Haney (1512), Morgan Hill;	3 1/2 - 2 1/2
"Under 1400 and Unrated"			\$ 44.40
	1st	Thomas Becker (0000), Morgan Hill;	5 1/2 - 1/2 \$ 74
	2nd	David Kelm (1165), Menlo Park;	4 1/2 - 1 1/2 \$ 59.20
	3rd/5th	David Sowards (1384), Fremont;	4-2
		Kent Hanson (1378), Cupertino;	\$ 45.07 each
		Christopher Wells (0000), San Jose;	

Get more out of Chess Play **POSTAL CHESS**

The Postal Chess Dept. will be moldet close to the International Chess Federation (ICCF) and their rules and regulations.

Main features : 10 Moves in 30 days (not incl. time in the mail) , 7 player ascension tournaments in classes III , II , I , H , M.

California Championship

(California Cup Tournament)

Championships for Women and Youth if participation warrants.

To get the Postal Chess Sections started you can enter free of charge untill December 31 1986.

Complete rules will be send with the assignment.

Start in any class (except Master Class) and go from there up or down. Master Class participants have to have a Master Class Rating from other organizations.

Send your entry to: Calif. Chess Journal , 4621 Seneca Park Ave.
Fremont CA 94538

News from the Berkeley Chess Club

by Alan Glasscoe

Our 8-round Club Championship Qualifying Open starts Friday, October 3; for information call 652-5324.

The bulletin of the 1985-6 Berkeley Club Championship and best games 1985-6 is available soon. It will include about 50 games (several annotated, some diagrams) .

News from the Fremont Chess Club

by Hans Poschmann

The Club Championship was won by Kurt Luoto in front of Dan McDaniel. A Tournamen Bulletin is available to all participants.

The KNOCK-OUT Tournament for the "EBONY ROOK" starts on Friday, October 3.

In diagram 1, Black to play, it is not easy to see how he can avoid losing. But ingenuity is the heart of success! 1. ... Kh6!! 2. Qd3 d1-Q 3. Qxd1 (Or 3. Qxg3 Qxglch 4. Kxgl Rxxg2ch! 5. K(Q)xxg2 stalemate.) 3. ... Qxxh3ch! 4. gxh3 Rh2ch 5. Kxxh2 stalemate!

The position depicted in diagram 2 (from the game Koberl vs. Tapari Budapest 1955) seemingly offers White good chances for success. But at a closer look we see that Black has many threats. Thus, after 1. Qd4 Rh2ch is deadly. Consequently, White decided to end the game in a stalemate by playing 1. g6ch Kxxg6 2. Qglch Kf6 (If 2. ... Kf5 or 2. ... Kh7 then 3. Qb1 winning) 3. Qg5ch Kxxg5 stalemate.

Diagram 3 depicts a position from a simultaneous exhibition by GM Averbakh. A happy amateur, playing Black, already counted on a victory when Averbakh calmly played 1. a4 and after 1. ... Ne8 2. Kc6 g4 3. a5 g3 4. a6 g2 5. a7 g1-Q 6. a8-Q Qg2ch 7. Kd7! Qxa8 created an unusual stalemate.

Diagram 4 is a study by Hermanis Mattisons. The study was first published in the Rigaer Rundschau on February 22, 1913. Mattisons at that time was 18 years old.

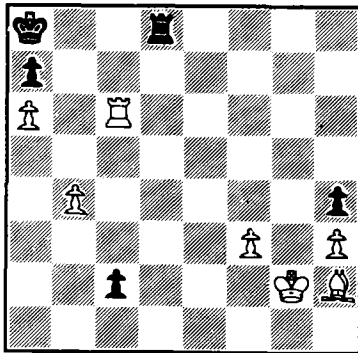
Solution: 1. Kc4! (Not 1. Kc3 because of Rb5!) 1. ... a3 2. Kb3 a2 3. Kb2! Rh2 4. Ka1 Rxxg2 stalemate.

Here are two positions for your solving pleasure:

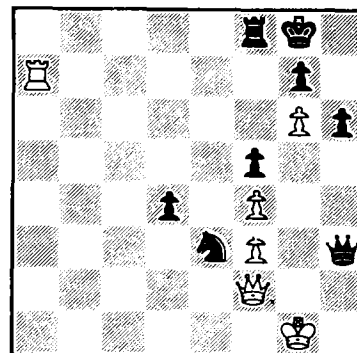
Diagram 5: Black to move (Moser vs. Nunex, Correspondence, 1983).

Diagram 6: Black to move (Enig vs. Efel) With 1. ... Nd5 Black would have won easily. However, he played 1. ... Rc8?, allowing White to draw.

5)



6)



Solutions: 5) 1. ... c1-Q! 2. Rxc1 Rd2ch 3. Kf1 Rd1ch! 4. Kxd1 6) (1. ... Rc8?) 2. Ra8! Rxxa8 3. Qa2ch! Rxxa2

This article was first published by the British Chess Magazine.

California Chess Journal
4621 Seneca Park Ave.
Fremont , CA 94538

Bulk Rate
U. S. Postage
PAID
Fremont , CA
Permit No. 621

CALENDER

and USCF CLEARING HOUSE

by Art Marthinsen, # 3 Locksley Ln.
456-1540 San Rafael CA 94901

October

4 Richmond Quads
Trendall Ball

25-26 San Jose
Francisco Sierra

November

1-2 Rohnert Park
Walter Randle

8-9 Berkeley ??
15-16 San Francisco
Mechanics Institute/M. Wilkerson

22-23 Richmond Trendall Ball

28-30 LERA Jim Hurt

December

6-7 San Rafael Art Marthinsen

13-14 Richmond Trendall Ball

20 Fremont Ray Orwig (School)

CLUB DIRECTORY

Berkeley Chess Club
Meets Fridays 7:30 PM
Berkeley YMCA,
2001 Allston Way
Alan Glasscoe 652-5324

Fremont Tri-City Chess Club
Meets Fridays 7 PM
Union City Library
Alvarado-Niles Blvd. and
Decoto Rd.
Dan McDaniel 443-2881

Mechanics Institute Chess Club
Meets Monday through Friday
9 AM - 11 PM, Saturdays 9 AM
to midnight, Sundays noon-10 PM
57 Post St. (4th floor)
San Francisco
Max Wilkerson - Director

Livermore Chess Club
Meets every 2nd and successive
Thursday of each month 7 PM
Homestead Savings
999 East Stanley Blvd.
Livermore
Charles Pigg 447-5067