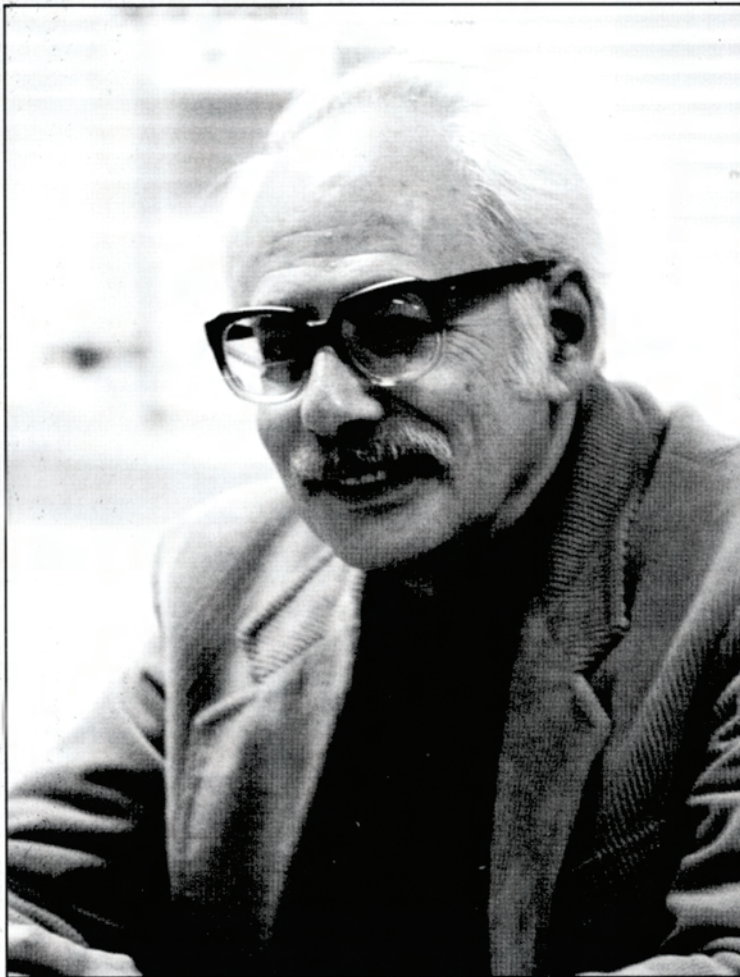


California Chess Journal

Volume 14 Number 3

Summer 2000

\$4.50



Ted Yudacufski

National Tournament Director

Photo by Richard Shorman

**Featuring Reports
on
LERA Labor Day
Sacramento Swiss
Readers Showcase
The Crisis in the USCF**

California Chess Journal



Editor: Allan Fifiel
Assistant Editor: Darren Russell
Membership Secretary: Doug Shaker
Design & Typesetting: Tawny Fulleros

Contributors to this Issue:

Kevin Begley
Steve Cohen
Riley Hughes
Alan Kirshner
John McCumisky
Eric Schiller
Doug Shaker
Richard Shorman
Sam Sloan
Alvin Setzepfandt

CalChess Board of Officers

President: Richard Koepcke
Vice-President: Hans Pochsmann
Treasurer: Mike Splane
Secretary: Doug Shaker

CalChess Board Members:

Allan Fifiel
Eric Schiller
Mark Pinto
Carolyn Withgitt
John McCumiskey
Alan Kirshner

Advertising rates:

Back Cover \$125
Two Pages \$125
Full Page \$75
Half Page \$50
1/4 Page \$25

We prefer submissions to be in electronic form, but hard copy is accepted. We accept text files (ASCII) and Microsoft compatible files for either Windows/DOS or Mac environments. Please send all correspondence, manuscripts, and ads to Allan Fifiel at PO Box 27, Visalia CA, 93279-0027 or Fifiela@Jostens.com or fax 559-651-0739. All material subject to editing.

The California Chess Journal is the official publication of CalChess, the Northern California Chess Association. Membership dues are \$15 per year, \$28 for two years, and \$41 for three years. Non-residents may subscribe to the journal for the same rates, but are granted non-voting membership status. Subscription requests and related correspondence should be sent to: CalChess, 2030 Mills Avenue, Menlo Park CA 94025. Phone is: 650-854-9793

Table of Contents

- 3 LERA is Back
- 4 Sacramento Chess Club Weekend Swiss #5
- 6 The Crisis in the USCF
- 9 Final Standings for the Guthrie McClain Memorial
- 12 The Kurt Bendit Rating Tournament Crosstable
- 13 CalChess Scholastic Newsletter
- 14 Readers Showcase
- 16 CalChess Gets a New Email List Server
- 18 California Lighting
- 23 The Jim Hurt Memorial Amateur Tournament
- 24 Beginners Corner
- 25 Club Directory
- 27 Tournament Organizers

THE EDITOR'S REPORT

On our cover this month is Ted Yudacufski. Ted is the owner of the Monterey Chess Center and a National Tournament Director. Tournament directors such as Ted are the backbone of USCF rated chess and CalChess is in urgent need of a new generation of tournament directors for the Bay Area. The lifecycle of a tournament director seems to follow a natural path. If I may use my own experience as an example, I became a tournament director so that I would have tournaments to play in. As time progressed, I became less interested in moving pieces on a chess board and more interested in directing a successful chess tournament. If you would like to learn how to help direct tournaments, please contact either Riley Hughes (510-623-1889) or Doug Shaker (650-854-2545).

Alan Kirshner raises an interesting point in his CalChess scholastic newsletter in this issue. Many of our talented junior players are restricting their tournament play to 'scholastic only' events. On the surface this is an attractive option as a strong young player can acquire many handsome trophies without much risk of losing hard earned rating points. However continuing to play in 'scholastic only' tournaments past a certain point is a deadly chess trap for many younger players. These players will not progress in either their chess knowledge or their USCF rating until they start playing in adult tournaments. As a young player approaches the upper 10% of his local scholastic rating pool, the coach and parents should begin to encourage a transition to adult tournaments. Initially this should involve playing in both adult and scholastic events. As the young persons skill and confidence grows, scholastic tournaments should be phased out thus leaving scholastic trophies to the next generation of young players.

Several years ago, we discovered to our horror that the post office cancellation machines were leaving large ugly parallel ink streaks on our covers. To protect you magazine cover, a protective envelope has been used in the recent past. Extensive mailing tests have indicated that the envelope is no longer necessary and so to reduce costs your magazine was mailed without. If your magazine arrives in an unsatisfactory condition, please contact me at 559-734-2784. Please continue to send your submissions for the CCJ to me at: California Chess Journal, PO Box 27, Visalia CA 93279-0027. The submission deadline for the next issue is January 10th, 2001.

LERA is back!

By
Riley Hughes

The first Jim Hurt Memorial was attended by 73 chess lovers on September 2nd and 3rd. \$1875 in prizes were awarded in Sunnyvale California at the traditional site of the LERA tournament which Jim presided over for close to 30 years.

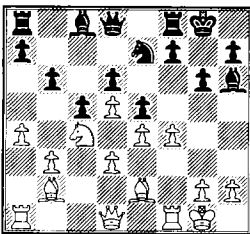
Hosted in three divisions, the over 2000 Championship section was won by Robert Sferra with 3 1/2 points earned over the four rounds played.

The Reserve section (1600-1999) was taken by Victor Batangan with a perfect 4-0 score. Eric Madriaga blew through the under 1600 Booster undefeated, also with four wins!

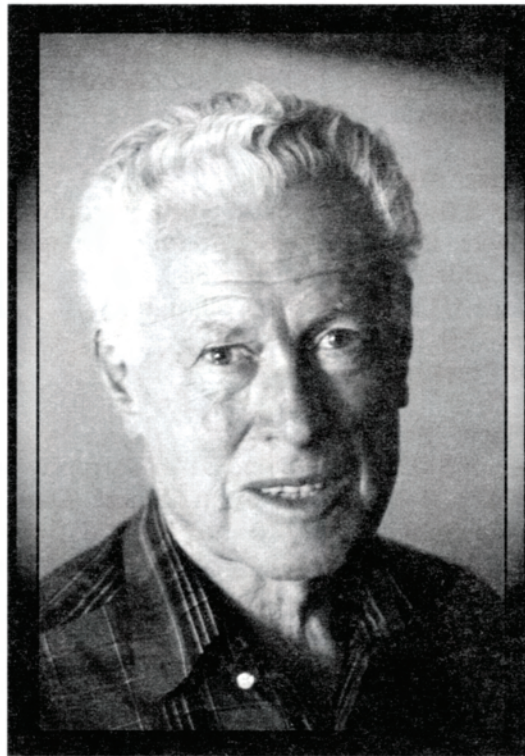
My thanks to TD's Doug Shaker, Don Wolitzer, and Tom Reale, assistant TD Josh Bowman, and Lera liaison Rod McCalley!

Robert Sferra - Albert Rich Sunnyvale, CA Sept 00

1.b3 e5 2.Bb2 d6 3.e3 Nf6 4.c4 g6 5.d3 Bg7 6.Nf3 0-0 7.Be2 c5 8.Nc3 Nc6 9.0-0 Bf5 10.Nd5 Nxd5 11.cxd5 Ne7 12.e4 Bd7 13.Nd2 Bh6 14.a4 Bc8 15.Nc4 b6 16.f4

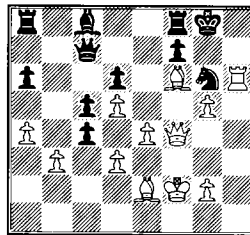


16....Bxf4 17.Rxf4 exf4 18.Qd2 g5 19.Bf6 h6 20.h4 Qc7 21.hxg5 Ng6 22.Kf2 a6 23.Rh1 b5 24.Rxh6 bxc4 25.Qf4



Jim Hurt

Photo by Richard Shorman

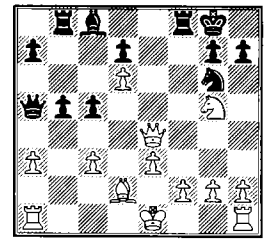


25...Qd8 26.Qh2 Qxf6 27.gxf6 cxb3 28.Rh8+ Nxb3 29.Qh6 1-0

The next LERA Tournament is LERA Thanksgiving, to be held on November 25th and 26th. Look for the ad in this issue of the *California Chess Journal*!

Igarta, J (1676) Garcia, J (1788) Reserve, Rd 3, [E26]

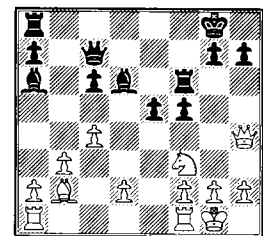
1.d4 Nf6 2.c4 e6 3.Nc3 Bb4 4.e3 c5 5.a3 Bxc3+ 6.bxc3 Qa5 7.Bd2 Ne4 8.Qc2 f5 9.Nf3 Nc6 10.d5 Ne7 11.Bd3 00 12.Bxe4 fxe4 13.Qxe4 exd5 14.cxd5 Ng6 15.d6 Rb8 16.Ng5 b5?



17.Qd5+ Kh8 18.Nf7+ Kg8 19.Nh6+ Kh8 20.Qg8+ Rg8 21.Nf7# 1-0

Aigner, M (2196) Levin, E (2200) Championship Division Rd 4, [C48]

1.e4 e5 2.Nf3 Nf6 3.Nc3 Nc6 4.Bb5 Nd4 5.Ba4 b5 6.Nxb5 Nxb5 7.Bxb5 c6 8. Bd3 d5 9.Qe2 Bd6 10.00 00 11.c4 Ba6 12.b3 Qc7 13.Bb2 dxe4 14.Bxe4 Nxe4 15.Qxe4 f5 16.Qh4 Rf6



17.c5 Bxc5 18.Bxe5 Bd6 19.Bxf6 Bxf1 20.Rxf1 gxf6 21.Qxf6 Rf8 22.Qc3 Re8 23.Rc1 Re6 24.Qc4 Qf7 25.Ng5 1-0

Sacramento Chess Club Weekend Swiss #5

August 19-20,2000

PRIZE WINNERS

1. Master/Expert

1st Place Adrian Keatinge-Clay & Robert Sferra
Score: 3-1 Prize \$155 each (Keatinge-Clay won trophy on tiebreak)
1st Place U2200: Michael Aigner, Ziad Baroudi, Jennie Frenklakh, &
Matthew Ho
Score: 2.5-1.5 Prize \$32.50 each
Total Players: 17

3. Reserve

1st Place Michael Smith
Score: 3.5-0.5 Prize \$140 & trophy
2nd Place: Brendan Birt & Adam Greenspan
Score: 3.0-1.0 Prize: \$60 each
1st Place U1800: Roy McCollough
Score: 3.0-1.0 Prize: \$140
Total Players: 15

4. Amateur

1st Place: Steve Bickford
Score: 3.5-0.5 Prize \$140 & trophy
2nd Place: Bob Baker, Marvin Gilbert, Alan Howe, Raturaj Pathak, &
Douglas Roby
Score: 3.0-1.0 Prize \$24 each
1st Place U1400: Gerald Schwarz
Score: 3.0-1.0 Prize \$105
2nd Place U1400: Charles Coleman
Score: 2.5-1.5 Prize: \$85
1st Place Unrated: Meiyappan Rajamanickam
Score: 3.0-1.0 Prize: \$60
Total Players: 28

5. 7-12 Scholastic (all trophy prizes)

1st Place, Peter Pascoal (4.0-0.0); 2nd Place, Miles Mabray (3.0-1.0); 3rd Place, Nikhil Chand (3.0-1.0); 4th
Place, Kao Saeteurn (3.0-1.0); 5th Place, William Terry (3.0-1.0); 6th Place, Ziyodulla Abdullavev (3.0-1.0); 7th
Place, David Rivera (3.0-1.0); 8th Place, Jose Rivera (2.5-1.5); 9th Place, John Van (2.5-1.5); 10th Place, Nicho-
las Robinson (2.5-1.5); 11th Place: Elizabeth Mabray (2.0-2.0); 12th Place, Blavir Sukhorukov (2.0-2.0)
Total players: 26

6. K-6 Scholastic (all trophy prizes)

1st Place, Tyrone Plata (4.0-0.0); 2nd Place, Graham McDaniel (3.5-0.5); 3rd Place, Michael Alpers (3.0-1.0); 4th
Place, Anna DePello (3.0-1.0); 5th Place, Rebecca Chao (3.0-1.0); 6th Place, Louis DePello (2.5-1.5); 7th Place,
Carrie Ho (2.5-1.5); 8th Place, Anyon Harrington (2.5-1.5); 9th Place, Shawn Mani (2.0-2.0); 10th Place, Dyllan
Snaveley (2.0-2.0); 11th Place, Andrew Gomez (2.0-2.0); 12th Place: Arthur Lindberg (2.0-2.0)
Total Players: 21

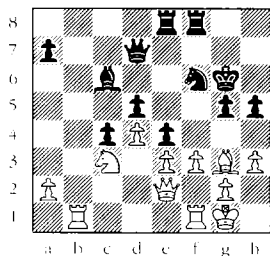
**Report Submitted by
John McCumisky**

The Sacramento Chess Club Weekend Swiss #5 was held the weekend of August 19 and 20. The turnout of 60 in the three two-day sections was the largest for any event previously held at Sacramento's The Learning Exchange. The addition of two scholastic sections to the "Weekend Swiss" format drew 47 participants. This was the largest turnout for an event in Sacramento in 3 years.

The Master/Expert Section was very closely fought with 10 players scoring even or higher. Adrian Keatinge-Clay of Vallejo held a couple of tough positions the second day to tie with Robert Sferra of San Jose for first place with a score of 3.0-1.0. Below is Keatinge-Clay's second round game with Sacramento's Ziad Baroudi.

Adrian Keatinge-Clay (2227)
Ziad Baroudi (2178)
Semi-Slav Defense, D43

1.d4 d5 2.c4 c6 3.Nf3 Nf6 4.Nc3 e6 5.Bg5 Be7 6. e3 O-O 7.Rc1 b6 8.Bd3 Bb7 9.O-O Nbd7 10.Qe2 c5 11.Rfd1 Ne4 12.Bf4 g5 13.Bg3 f5 14.cxd5 exd5 15.Bxe4 fxe4 16.Ne5 Nf6 17.Ng4 c4 18.Nh6+ Kg7 19.Nf5+ Kg6 20.Nxe7+ Qxe7 21.Rf1 Bc6 22.b3 b5 23.bxc4 bxc4 24.Rb1 h5 25.h3 Qd7 26.f3 Rae8?

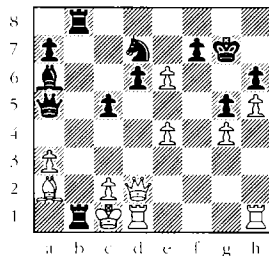


27.fxe4 Nxe4 28.Rxf8 Rxf8 29.Nxe4 dxe4 30.Qxc4 Bd5 31.Qa6+ Rf6 32.Qa5 a6 33.Be5 Rc6 34.Rb8 g4 35.Rd8 [1:0]

In the 15 player Reserve Section, Michael Smith of Sacramento went through the field with a 3.5-0.5 score to gain first prize. Fairfield's Roy McCollough defeats Adam Greenspan of Sacramento in a game with a nice finish.

Adam Greenspan (1910)
Roy McCollough (1665)
Sicilian Defense, B35

1.e4 c5 2.Nf3 Nc6 3.d4 cxd4 4.Nxd4 g6 5.Nc3 Bg7 6.Be3 Nf6 7.Bc4 O-O 8.f3 Qa5 9.Qd2 Qb4 10.Nxc6 bxc6 11.Bb3 d6 12.O-O-O c5 13.a3 Qa5 14.Bh6 Ba6 15.Bxg7 Kxg7 16.Bd5 Rab8 17.h4 h6 18.g4 Nd7 19.f4 e6 20.Ba2 Rb6 21.f5 Rfb8 22.h5 g5 23.fxe6 Rxb2 24.Nb1 Rxb1+!



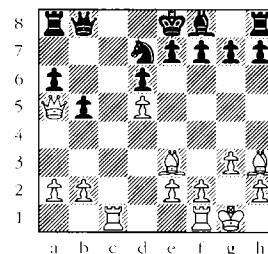
[0:1]

The largest section of the event was the Amateur section with 28 players. Steve Bickford of Sacramento won the event with a 3.5-0.5 score. Sacramento's Stephen McKee upsets Chico's David DuVair in this next game.

Stephen McKee (1186)
David DuVair (1511)
ENGLISH OPENING, A35

1.c4 c5 2.Nc3 Nc6 3.Nf3 d6 4.d4 cxd4 5.Nxd4 Nf6 6.g3 Nxd4 7.Qxd4 Bd7 8.Bg2 Qc7 9. O-O Bc6 10.Nd5

Bxd5 11.cxd5 Qc5 12.Qa4+ b5 13.Qa5 a6 14.Be3 Qc8 15.Rac1 Qb8 16.Bh3 Nd7?



17.Rc7 Nc5 18.Bxc5 dxc5 19.Bd7+ Kd8 20.Rb7+ [1:0]

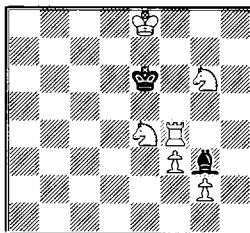
The 47 players in the two scholastic sections came from as far north as Biggs, as far South as Merced, and as far west as Daily City. The 7-12 winner was Peter Pascoal of Sacramento and the K-6 winner was Tyrone Plata of Daily City, each scoring 4.0-0.0 in their sections.

The Sacramento Chess Club wishes to thank everyone for coming out to our event. If you want to see the full final standings, go to the Weekend Events Page on the Sacramento Chess Club Web Site at www.lanset.com/jmclmc/default.htm We look forward to seeing you again at our Scholastic and regular events in December.

PROBLEM

CORNER

by Kevin Begley



White to move and mate in three!
 Solution in the next issue.

Editors Note: I made some errors in printing this problem in the last issue so I am running the corrected version now.

CORNER

PROBLEM

The Crisis in the USCF **UNITED STATES CHESS FEDERATION**

Executive Board Meeting May 21, 2000 Newburgh, New York

by
Allan Fifield

In the last issue of *Chess Life*, new USCF President Tim Redman spoke of USCF's current financial crisis. According to President Redman, USCF may suffer an operating loss of over \$400,000 in its current fiscal year. An organization the size of USCF can not sustain this sort of red ink for very long without being forced to seek refuge in some sort of bankruptcy.

Against this grim background, the Executive Board of the USCF met last May in New York to discuss the hard decisions that must be made to save our organization. Nothing is sacred in the USCF at this moment. Many items of day to day importance to the average chess player such as the future of *Chess Life* and Tournament Life Announcements were discussed at this meeting. In reading this transcript, I came away with a respect for our hardworking board members who must guide the Federation away from being a traditional magazine and over the board play based organization to an internet play and website based organization.

I have edited the 116 pages transcript down to the issues that I think may interest many of the readers of the *California Chess Journal*. While I have taken some liberties in re-arranging material and in cutting some excess 'chatter', I have tried to give a condensed and unbiased account of this critical meeting. To help orient our readers, the following is a listing of the key speakers and their official titles.

EXECUTIVE BOARD:

Bob Smith - President
Dr. R. John McCrary,
Vice-President/Secretary
Jim Pechac -
Vice-President - Finance
Doris Barry -
Member-at-Large/Secretary elect
Dr. Tim Redman -
Member-at-Large
Joe Ippolito - Member-at-Large
Helen Warren - Member-at-Large
Garrett Scott - Member-at-Large

USCF Management

George L. DeFeis -
Executive Director
Jeffrey Loomis -
Chief Financial Officer elect

USCF STAFF:

Joan DuBois
Laura Martz
Judy Misner
Glenn Petersen (Editor *Chess Life*)

The Future of Chess Life

DR. McCRARY: I would suggest we would at least discuss what the possibilities are regarding *Chess Life*, I would suggest, since Mr. Petersen is here. We had discussed various options on *Chess Life*. Tim, you want to address that?

DR. REDMAN: Certainly the one that I like of the four plans presented was going to what I like to call the newsstand *Chess Life*, which is a 5 reduced number of pages, more featurism, more story-driven, a lot of the columnists and the small TLE's to go to the web. And the *School Mates*, the eight-page paper edition, and in each case

then an expanded verse of *Chess Life* on the web, an expanded version of *School Mates* on the web. And I think you've done a good job of pointing out the increased fees that are going to be involved with this. I think that your estimates are very actual and — but we are obviously going to realize savings.

So just give let's say this scenario: *Chess Life*, 40 pages, a 40-page paper issue. And a *School Mates*, eight-page paper issue, but a much larger monthly issue on the web. We certainly know that we would save some on the printing. That's not a linear savings though, obviously, you've got your start-up costs for the press run and everything else, but there's some printing costs that would be involved, and more substantial postage savings. The postage savings are pretty linear.

MR. PETERSEN: Not pretty linear, but if you have the same amount of advertising in a smaller issue, then your postage rate should go up because the rate is based on weight and advertising percentage. If you go more than 45 percent in advertising content, you're in danger of losing your periodic postage rate anyhow.

DR. REDMAN: The other point is advertising. When you say 40 pages of *Chess Life* on the paper, newsstand issue, that doesn't include ads. I think there should be a positive incentive to go out and sell ads to pay for these other things and increase the revenue. So this is the kind of discussion we've been having for several months, and since you're here and you're the ex-

pert, before we do anything really dangerous, we'd like to hear your opinions about this.

MR. PETERSEN: Number 1, although it may happen somewhere down the line where everybody has Internet access, it's not true of our membership today. Whether or not we last that long depends on what we decide to do today. If the tournament reports that we're getting in are a reflection of who is or is not on the Internet — it's as good a gauge as anything — only half of our tournament players are on-line. So if you put TLA's on-line, half our tournament players aren't going to be able to play chess.

DR. REDMAN: There is another option and that is to go to a kind of — we're kind of reconceptualizing membership structure. We know that half of our members are scholastic players. We know of the half that remain, about half of those are regular tournament players — roughly. I think about a quarter of our membership are tournament players. Very important people, obviously. If half of them have some kind of Internet access, half don't, then the question is, should the local tournaments be more heavily advertised by the local media or should we continue to have exactly like we've always had, exactly the TOA policy we've always had, or should we have perhaps the web TLA's plus a supplemented TLA, TLA supplement available to the tournament members who are interested in the TLA. I read mine with a big magnifying glass, but I read it religiously, at cost, but not being part of what is our public face which is our newsstand advertising face. So these are all obviously interrelated issues.

MR. PETERSEN: Another is if you reduce the size of the magazine, it's not going to be as attractive on the newsstand. Right now we're at the top for a very simple publication. So we're looking for contract members still through newsstand sales. We'll get that vote. And probably reduce your income from the sales in your budget.

DR. REDMAN: You think the appearance, announcement adds appeal to the newsstand?

MR. PETERSEN: I think the bulk does. Not the content.

PRESIDENT SMITH: Ernie?

MR. SCHLICH: One other thing we tried to attract sponsorship, one of the things you have to show your potential is tournaments and the TLA to show tournament activity. That may be a consideration also.

DR. REDMAN: We're not talking about cutting out TLA.

MR. DeFEIS: TLA's could certainly appear in the magazine, the printed version. All TLA's are still going to be accepted and received, but placed on to the web. That was the intent of this, not to stop TLA's. I do have a, you know, a feeling that again your local newsletter, local newspapers, and now I get them all, I think that if I'm in Des Moines, Iowa and I wanted to know about what tournaments are going to take place in my local, I'm going to get it from the local chess club, not the national magazine, in a sense.

MR. PETERSEN: This argument was brought up I guess when Frank Elie (ph) was editor. Got up before the delegates and made the same sort of proposal. Take the local TLA's out of the magazine, move them to one line. And they nearly road him out of town on a rail.

DR. REDMAN: Certainly, the people that we have — I mean, I like to advertise, you know, nationally. I like that exposure. I don't — I somehow can't seem to get anyone to it outside of that county. I love to have that national exposure, and it's cheap.

PRESIDENT SMITH: Rachel?

MS. LIEBERMAN: Let me just say that there's a real advantage to having TLA's at a central location like the magazine. If you live in Iowa, you can get it from your local Iowa chess club but a state next to Iowa isn't going to know. Just like when Myron used to direct the tournaments for the Phoenix Chess Club, we got all kinds of people from California.

MR. DeFEIS: The TLA, it will be published.

MS. LIEBERMAN: Not only the locals have access, so you want to be aware of the fact that people from other states are looking at each

other's TLA's.

MR. DeFEIS: Agreed, sure.

MR. BROWNSCOMBE: There is no consistency. Some local publications are quarterly. Very few are monthly like *Chess Life*. Some states don't even produce a publication — I can name at least one. I'm telling George this in response to what George is saying. People can get their tournament information from their local publications, and with all due respect, I have to disagree with my boss.

MR. DeFEIS: I understand.

DR. REDMAN: There's no question what you say is true. It's absolutely true that if I happen to be traveling to New York and I want to know what tournament I want to visit, the TLA is the place to go. Within a budget situation, please, let's realize what service we're paying for. We're paying, in this case, for a few individuals who happen to be traveling.

PRESIDENT SMITH: The problem is, we're getting fewer people. We're having as many events — I think Glenn said that — but we're having fewer people attend those events. And if we rip the TLA out and put it onto the Internet, it's going to aggravate that problem.

MR. SLOAN: I'm probably the most active person involved on the Internet. I never heard of a person that went on the Internet and got in a tournament they wanted to play in. The USCF is up and down. Sometimes it's good; sometime it's bad. Most of the time it's really pretty terrible. People give up. I will go on to the USCF website at least once a day to look at ratings but I never look at the website for news because I know it's not a reliable source of the information. Get a good reliable source going first. Once that's done — it hasn't happened yet, but start talking about using the website as a substitute for the magazine. That hasn't come yet. And right now, keep on going and encourage our management to improve.

MR. DeFEIS: We're talking about the packaging of the TLA's. There's also a suggestion raised about TLA's being published separately. That could be, in really a

very, you know, newspaper type print. If it's just a listing of tournaments going on and relieving *Chess Life*, go ahead, make it more attractive, attract more advertising into it, for those people who want to receive a hard copy of a TLA listing.

MR. SLOAN: Are the TLA's on the web now?

MS. DuBOIS: Yes.

MR. PECHAC: Yes.

MR. DeFEIS On to publications, by Glenn Petersen. We've obviously been looking at publications, exploring opportunities, making some changes with really the thought of enhancing things. *School Mates* and *Chess Life* are two ventures that we're looking at where we issue a hard copy, a printed version of the magazine, but really enhance our web presence for both of these publications, *School Mates* really being put largely on the web with a — still a direct mail piece. Everyone believes there should be a direct contact regularly with the membership. And *Chess Life*, maybe *Chess Life* might be the title of what we look at when we consider how to make changes there.

Ratings

MR. DeFEIS: On to ratings, probably our most unique function in the office. You look at every not-for-profit association, we all do the same things with the exception of ratings, I would say.

We have the long-term objective of receiving tournament results online, submitted through a program template which will interface directly with our ratings program and membership database so that ratings could be processed quickly. Now, again, long-term I'd say, we know it's a problem, it's high on our list of things to do.

Dues and Revenues

MR. DeFEIS: Right now, 90 percent of our income comes from dues and books and equipment — 38 percent member dues; 52 percent books and equipment. Relying heavily on that. That's why we're talking about, How are we going to get more money? Well, we have got to raise dues or increase our margin. That other 10 percent, we need

to expand. You see it there. Advertising, donations, tournaments, fees and profits therefrom. There's a lot of money out there, and again, this will be that activity of that director of sponsorship and grants.

That will, you know, not have us focus on a \$1 increase or a \$2 increase as the only way to go. Certainly our dues structure needs to be in line with today's economics, but I don't want to solely focus on dues and books and equipment. We've got to begin looking outside and increasing that 10 percent to 20 and 30 percent. That will relieve a lot of the issues relative to membership concerns when we're always looking at dues.

Rulebook

MR. GOICHBURG: One of the reasons I came here is to talk to the board about the subject of the rulebook and I'm disappointed that this was dealt with in closed session and I didn't get a chance to present my proposal, although I had mentioned my proposal to some board members.

Basically, I feel that it is very unwise to pay people and give them royalties for writing a rulebook when the last time around, when there was a lot more work to do — because we've doubled the size of the book, which won't happen this time — we had a volunteer committee. In fact, you know, I was one of the people on the committee and I didn't even put in for my expenses, although I certainly had the right to.

What I suggested happen this time, and you can still do it if you want to reconsider your motion, I think you should appoint a committee of — consisting of the best qualified people and that they will be volunteers. I know that they'll be volunteers because I've spoken to many of them.

I've spoken to Carol Jarecki who was on the committee that you've appointed, as things stands now, and she's stated that she's willing to work without being paid. I've spoken to Al Losauff (ph), who's cochair of the rules committee. He's said the same thing. I've spoken to Ernie Schlich, who I think should be on

the committee because he's had more experience than anyone in dealing with recent complaints regarding sudden death and time delay clocks and that sort of thing, and that will probably be, I think, the main area of revisions in the new rulebook because. When the old book came out, there were no time delay clocks.

I am also willing to serve on the committee as a volunteer. We have four people that are willing to serve as volunteers. I would suggest that Tim just be on the committee, also. I don't know if he's willing to serve as a volunteer. If it was up to me, I would suggest that committee of five. If you're asking why a committee of five when we had three last time, well, last time nobody had e-mail. So it was quite a difficult job, you know, sending around things by fax and by mail. And, you know, I think you can enlarge the size of the committee due to the use of e-mail. I think things will still work pretty smoothly.

I don't understand why suddenly when the USCF has financial problems, people are being, you know, a committee is being paid to do a job when it's clear that the best people available, the most qualified people available, will work without any pay and without any royalties.

Now, after your vote I spoke to a few board members who voted with the majority, and one of them said that what was done was standard, and I would say that well, perhaps it is standard in publishing houses and so forth that, you know, authors are paid, and I'm sure it is, but — I mean, these are not standard times not USCF. We've had a financial task force tell us that we have to take emergency measures and we have to cut back at every possible opportunity, and now suddenly we're paying people to write the rulebook when the previous committee did it for nothing.

I would also say that "standard" for the USCF is that committees volunteer and we pay only when the volunteer committee can't do the job. We don't pay the rating committee for their technical expertise and we don't pay the Internet committee and, you know, Internet

committee members have come to the office, they've looked over our computer system, for instance. We have a lot of experts that volunteer their time for various reasons in the Federation, and I think the policy has always been, We pay only when we have to and, you know, I'm really disturbed that for some reason, you know, this committee is going to be paid when it's clearly not necessary.

PRESIDENT SMITH: Carol is a member of the committee. Do you have any comment on this?

MS. JARECKI: My only comments are since I would be on both committees, I was on the last rulebook committee, I'm perfectly

happy and willing to donate my time for the USCF to help rewrite the rulebook. There are much fewer areas that have to be rewritten this time than last time. The digital clocks are one thing and FIDE for another.

To the project, as Bill said with e-mail, if we can set up a website so the rest of the membership can send in suggestions or problems they incur in their own tournaments around the country, we'd be able to be much more efficient this year. When I was originally contacted about doing the rulebook again I assumed it was going to be on a volunteer basis, so I was surprised it was going on to be on a paid basis. Personally, I

think we should do it on a volunteer basis. That's my personal opinion.

PRESIDENT SMITH: Sam?

MR. SLOAN: This is one of the most hotly debated issues. I realize most of the people in the board don't read the news groups. But on the news groups, this is the most hotly debated issues. I tell you why, frankly. Everybody knows Bill Goichberg here is the biggest chess organizer in America. There are other lesser chess organizers smaller than Bill Goichberg who want to put him out of business so that they can take over and become the biggest chess organizer in America.

Continued on page 10

Final Standings for the Guthrie McClain Memorial August 19th 2000 Mechanics Chess Club

The Game 45 brought 20 players to the Mechanics Chess Club on Saturday for a day of fun and tough competition. Senior master Dmitri Zilberstein proved once again his mastery of the game by winning the tournament hands down with a score of five zip. Keith Vickers lost only to Zilberstein to finish second while Eric Schiller and Kenneth Hills scored third and the best Under 2200. Other winners were Ricky Grijalva and Martin Marshall who shared the Best Under 2000 prize, Lev Pisarsky who was Best under 1800 and David Lau who was Best under 1600.

#	Name	Rtng	Rd 1	Rd 2	Rd 3	Rd 4	Rd 5	Total
1	Zilberstein Dmitri	2400	W14	W6	W2	W4	W5	5.0
2	Vickers Keith	2200	W17	W8	L1	W9	W6	4.0
3	Schiller Eric	2218	H---	W12	D7	W11	D4	3.5
4	Hills Kenneth	2189	W16	W9	W5	L1	D3	3.5
5	Pruess David	2364	W15	W11	L4	W7	L1	3.0
6	Lee Andy	2158	W13	L1	W14	W8	L2	3.0
7	Grijalva Ricky	1970	H---	X---	D3	L5	W13	3.0
8	Marshall Martin	1887	W19	L2	W15	L6	W14	3.0
9	Pisarsky Lev	1722	W20	L4	W18	L2	W16	3.0
10	Falconer Neil	2065	L11	L15	W19	D13	W18	2.5
11	Nicholson Robert	1953	W10	L5	W17	L3	D12	2.5
12	Haun Benjamin	1783	W18	L3	L13	W15	D11	2.5
13	Lau David	1355	L6	W16	W12	D10	L7	2.5
14	Wang Drake	1683	L1	W19	L6	W17	L8	2.0
15	Chan John	1380	L5	W10	L8	L12	W20	2.0
16	Gross Kevan	1757	L4	L13	W20	D18	L9	1.5
17	Lewis William	1374	L2	W20	L11	L14	D19	1.5
18	Laufer Ben	1134	L12	B---	L9	D16	L10	1.5
19	Light David	1207	L8	L14	L10	D20	D17	1.0
20	Wuerz Larry	unr.	L9	L17	L16	D19	L15	0.5

And one of the things they've proposed is to require arbiters to be present to keep score of the games, which of course puts a tremendous burden on the process with large numbers, and we couldn't afford to pay them. This has closed them down. Nobody has advocated this but I'm afraid — might be one of the people advocating it.

Chess Life (Again)

DR. REDMAN: Well, the reasoning here, okay, because I had the publications committee start to look at this. In my view, Glenn is correct to request that kind of large increase for the expanded web presence, but one of the things we might consider doing is to give younger unknown writers a chance to add the exposure that publishing on the official USCF website, *Chess Life*, would give them.

One of the ideas of moving a lot of the content to the web of *Chess Life* is to be able to track hits on articles. Okay? So when I claimed, you know, that Redman on the draw offer is the greatest column in *Chess Life* and should be continued and put up to the front of the page — we put that on the web and we find out the only people 15 going to Redman on the draw are the immediate family of Tim Redman.

Okay, we are going to have a way of assessing feature popularity, and I would say that this could be done for less — a little creativity on the part of the staff is to go out and develop that new writing talent and say, Here's your chance to make an impact. We're not going to pay you right off the bat, but you have your moment in the sun. And if, you know, if you gain a following, you get popular, you could do it that way. That requires, of course, more work for Glenn. But is that doable? Can we save some money there?

MR. PETERSEN: Possibly.

DR. REDMAN: Okay.

MR. PETERSEN: However, still can't get around the photography people.

DR. REDMAN: Those are steep. So we could probably trim a bit. But

I think the conceptual direction is completely correct. I'd suggest \$120,000. That's still almost a 45 percent increase. Is that all right?

MR. PECHAC: I'm not the approval. I'm working through the management process here, and —

DR. REDMAN: He hasn't screamed or yelled or anything.

MR. PETERSEN: You just made my life more interesting.

DR. REDMAN: Thank you, Glenn.

MR. DeFEIS: We're all contributing something. Glenn. Don't worry.

Regional TLA's

PRESIDENT SMITH: Is that regional, Glenn? You could have regional TLA's?

MR. PETERSEN: Is anybody familiar with the way the TLA session is set up? The greatest portion of it is Grand Prix events.

PRESIDENT SMITH: Yep.

MR. SCHULTZ: Grand Prix, move a certain amount.

MR. PECHAC: Space-wise.

PRESIDENT SMITH: Space-wise, he meant.

MR. GOICHBURG: I agree with what Tom said, which really I think — Tim said the TLA's only serve the occasional visitor. A lot of states publish every two months, every three months. A lot of states are constantly losing their volunteer editor and don't publish for six or eight months even though they're scheduled to publish every two or three months.

In New York State, I can assure you, no one gets their TLA's from *Empire Chess*. No one. In fact, there are hardly any in there. It comes out every three months and, you know, if it did carry TLA's, it just wouldn't have most of them due to the timing. Something that comes out every three months, the organizers just can't handle something like that.

DR. REDMAN: We're aware of that.

MR. DeFEIS: Let me say, I'm not suggesting that there is no value to TLA's in *Chess Life*. It's looking at what it is and if that value is something that we should pay for or that the budget should pay for.

DR. REDMAN: No one's questioning the importance of TLA's. The question is simply, are there alternatives of equally valid tracking systems? Such as something that looks like a rating system.

MR. GOICHBURG: That's fine. But when I hear about relying on state publications, I'd have to say that isn't going to work.

MR. PETERSEN: I have to question the logic behind this whole process. As an organizer, as a tournament director, I have to pay for that TLA. I have to pay the USCF to run that announcement in the magazine. If you're talking about coming out with another publication that's going to come out to the members at cost, then why am I paying you in the first place? It's not reaching the people I want to reach if somebody else has to pay on the other end as well.

DR. REDMAN: Okay. Well, thanks for your views.

DR. McCRARY: Just putting aside then the whole question of reduced *Chess Life* and looking at the figures that we had here, in reducing the memberships did you also reduce the magazine expenses we discussed yesterday, bringing them down?

MR. PETERSEN: Printing, you can probably knock that down a little bit, if you make a motion here today to bring it before the delegates. And that's to take the annual rating list out of *Chess Life*. It's 48 pages right there.

DR. McCRARY: Don't let us forget to bring it up to the membership.

MR. GOICHBURG: That's a great idea.

US Championship

PRESIDENT SMITH: Let's reconvene here. I had asked George to fill us in on the Seattle situation.

MR. DeFEIS: As you know, I went out to Seattle on Sunday or Monday to meet with Erik Anderson, Yasser Sierawan, and I met with Scott Oki also to go over their proposal. Our issues we wanted to talk about, but this was a proposal for the Seattle Chess Foundation to undertake the sponsorship and basically organizing of a U.S. Cham-

pionship. And — so we had proposals we reviewed, we had issues.

I went out there and I thought that it's going to turn out very well. And frankly, it looks like a group that the long-term contact is perhaps even more important than what might come out of this. Now, certainly we had some issues relative to the length of contract and the fee that USCF might obtain for licensing this event, which earlier in the year had been cancelled due to financial reasons.

But anyway, we do have an agreement with the Seattle Chess Foundation. And some of the points that we had raised — I'm just going to — I have copies of the signed agreement to pass around. I'll give that to the board if they'd like to see that. But the term of the agreement will be 10 years. I'm just reading from my summary that I e-mailed that — you may have been in travel, you may not have gotten.

The Seattle Chess Foundation will be incorporated as a not-for-profit organization in Washington by June 15th. They told me it would be done by the next day because they had paperwork being filed. That was important to us that we were signing with a legal entity. If they decline to hold the event in any one year then we have the right to cancel the agreement. That was a concern that they might conduct it one year but not another and still want to do it in the a future year, so we wanted that particular understanding and that's in the contract.

At the close of the tournament, they have 60 days to tell us if they plan to exercise the option to do the next year's event. Their original proposal was 90 days and we put 60 and we got that. In the first year they asked if they could have 90, just that — so far behind, and I agreed to 90 in the first year but 60 thereafter.

For the 10-year period, we'll be given a flat fee of \$5,000 each year for the first five years and 10,000 a year for the second five years, years six through 10, a large improvement over what — and this was a concern of ours — they were offering us 1,000 for five years and then

5,000 for 6 the second five. Basically they were offering \$30,000, when you add that up. This will come to 75,000. They were agreeable to that. Especially when I told them what it cost to go out and do this meeting with them. They said, Okay, okay. This was right before the martini we had. That was the time to hit them with it, I think.

But anyway, let's see, by August 15th of this year they will, in quotes, Prove to our satisfaction that the \$100,000 prize fund exists. They had mentioned this, in a sense. Because they had offered to provide a — what do they call it?

MS. WARREN: Letter of credit.

MR. DeFEIS: A letter of credit, and they said that may take awhile. And frankly, again, you see Mr. Oki in there, and that was I feel of little concern at this point, in what they're looking to build this event into. Frankly, this is going to be part of a Seattle Chess Foundation with a brick and mortar operation at some point. They're looking to do far more than the U.S. Championship for chess in the Washington — in the Seattle area.

But anyhow, by August 15th we'll get some indication that there is \$100,000 there. The executive director, myself, will be a member of the U.S. Championship organizing committee. Again, this puts us — keeps us in the loop. Frankly I don't think there will be meetings to attend — maybe one a year. Probably they'll have one at the event. But certainly as far as being the dialogue that we as a member, whatever, correspondence or minutes and agenda and things like that we'll get, our name will be prominent. It will be our event. Something like if they secure Boeing sponsorship, like, Boeing presents the USCF U.S. Championship hosted by the Seattle Chess Foundation. Something like that, which is what we wanted. We'll have incentives to develop ideas, products, merchandising in conjunction with them.

Again in the original proposal I made it clear to them we don't want to feel we're divorced from this for 10 years. We want to be part of the organization, organizing committee, which is important

when they're talking about future years' venues and dates. But also if we think something would be a good piece of merchandise, we can bring that and develop whatever the financial arrangements might be at that time. But we will have incentives.

Any rights that we grant to the sale of Chess Foundation cannot be transferred to a third party without our approval. I have to get back to them. I mentioned earlier about any prohibitions we have on the books about sponsorship, in particular, tobacco and alcohol. If someone could find for me where it says that, I could give them the wording. There was not a concern, of course, for tobacco, but certainly they were thinking about getting a winery as a sponsor, and if we have a prohibition about that, I have to get back to them very quickly.

DR. McCRARY: Just to interject, my recollection is that only pertains to Chess Life advertising, and it's probably not a policy, it's kind of a long-standing unwritten rule.

MR. SCOTT: No, it's written somewhere.

MS. WARREN: Yes, it is.

MR. DeFEIS: If it's only Chess Life advertising —

MS. WARREN: This goes all the way back to Fairfax, when the Fairfax organizers had the tobacco company support and it was then—

MR. SCHULTZ: Yeah, I think tobacco was more in question than the alcohol.

MS. BARRY: I remember they wanted a wine ad.

DR. REDMAN: We'll check. Someone will check.

MR. DeFEIS: We're going to clear with each other in a sense the sponsors that we're going after. We're able to secure, of course, web banners on our page which will be linked to their page which have the official coverage of the event, but we were able to secure that and keep all that revenue.

MS. WARREN: Where do they expect the sponsorship to come from?

MR. DeFEIS: Corporations. They mentioned Boeing. The Oki foundation, perhaps. I mean, I think

— Erik had said to me that they're all, you know, whatever, going to be contributing whatever amount, but they're connected to the highest circles in corporate Washington, Seattle. Oki is one of the Microsoft originals, I think made his bills there.

MR. IPPOLITO: Can I stop you one minute? Just for our audience so you don't think we gave up the kitchen sink and all the other good things. We came out with a great prospect, you know, they're going to be funding this tournament, \$100,000. Bottom line, too, there are built-in safeguards for this. If at any year they don't hold that particular tournament, then this contract is null and void.

MR. DeFEIS: We have the right to cancel it. I that's the better wording for us, actually. If this goes great in seven years and in year eight we both say, Let's not do it, we don't want our own contract to say it's cancelled.

MR. IPPOLITO: We're protected.

DR. REDMAN: That's very good news, and we had the conference call on this and I hope you did convey to them that we acted very, very quickly, for us.

MR. DeFEIS: I let them know that. Even though Yasser takes a shot at me now and then, I noted

that this was an expedited — because of the interest we have in it. They understand. They're — obviously they're looking at it, at an event in September. We're not talking about 2001. I understand their anxiety a bit, also, in getting the t's crossed and i's dotted.

Quality Control at the USCF

MR. PETERSEN: We don't have any rules. My concerns there were giving them carte blanche usage for commercial products for our logo.

MR. SCHULTZ: That refreshes my memory.

MR. PETERSEN: I guess we'll have to come up with something.

MR. SCHULTZ: On a chess set or something like that. That was it.

DR. REDMAN: Okay, products.

MR. PETERSEN: They had to be submitted first for approval. Then you'll have to write something up.

DR. REDMAN: We shouldn't attach our name to a product unless we're quite confident of the quality of the product. One of the most embarrassing incidents of some years ago was the USCF official chess playing computer which didn't know how to capture en passant.

Chess Press

MR. DeFEIS: On Page 3 we're developing an initiative in publishing called the Chess Press. You'll see Attachment 5, if you wish, is on Page 3 of the June issue of Chess Life, announcing the Chess Press. And we're venturing into an area that we think we will have some success in. We think it will be a profitable area that will help support all the things that we do in our not-for-profit activities, 6 scholastics and everything else. Basically we think we should be publishing some stuff. That's a type of monopoly that's legal. If it's our book, 9 we're the only ones with it, we can establish relationships and how it should be distributed. That will benefit us.

We're looking primarily at mainstream books for the casual player, children's books, instructional guides. There's the thought that the U.S. Chess Federation should provide chess instruction manuals and materials. So this is a venture that's going to be kicked off. We're soliciting manuscripts from our members, but we'll be looking elsewhere. Actually, a couple of people have told me, Gee, they have a book and they were asking if we could suggest a publisher, and I've been saying, Well, let's talk, maybe we'll do it ourselves. *Continued on page 20*

THE KURT BENDIT RATING TOURNAMENT CROSSTABLE

August 16th - 31st 2000
Mechanics Institue

#	Name	RT	Fide	1	2	3	4	5	6	7	8	9	10	11	Total
1	E. Schiller	2215	2172	X	-1-	0	1/2	1/2	1/2	1	1/2	1	1	1	7
2	V.Nambiar	2225	2118	0./.	X	1	0	0	1	0	0	1	1	1/2	41/2
3	L. Snyder	2102		1	0	X	1/2	1	0	1/2	1/2	1/2	1/2	1/2	5
4	D. Blohm	2223	2143	1/2	1	1/2	X	1	0	0	1/2	1	1/2	1	6
5	M. Brown	1999	x	1/2	1	0	0	X	1/2	0	1/2	1/2	1/2	1	41/2
6	R. Wong	2200	2101	1/2	0	1	1	1/2	X	1	1/2	1	1/2	1	7
7	Grijalva	1970	2138	0	1	1/2	1	1	0	X	1/2	0	1/2	1/2	5
8	Chethan	2232	2163	1/2	1	1/2	1/2	1/2	1/2	1/2	X	1/2	1/2	1	6
9	P. Stevens	2041	x	0	0	1/2	0	1/2	0	1	1/2	X	0	0	21/2
10	D. Steel	2084	x	0	0	1/2	1/2	1/2	1/2	1/2	1/2	1	X	1	5
11	E. Temple	2062	x	0	1/2	1/2	0	0	0	1/2	0	1	0	X	21/2

CalChess Scholastic Newsletter

by
Alan Kirshner

I am not sure how many of you check the Top 50 list by age group every two months, but Northern California does not have a lot of players represented. A few years back when Richard Shorman had his Blue Knights and most topped 1600 by the time they were in sixth grade and many more parents took their children to adult as well as scholastic tournaments, Northern California players were all over the charts. Today, when California appears next to a name it is usually referring to the Southern California state. Yet, the few players on the Top 50 are way up there. Alexander Setzepfandt, in fifth grade, just moved into second place in the 9 to 10 year old category with a 1776. Drake Wang is fifth in the same age group with a 1746. Daichi Siegrist, at 1567, is in ninth and is also ten years old. Matthew Ho, at 1995, places third in the Top 11 to 12 year-old group. In the "Top Age 15-16" category, International Master Vinay Bhat sits on top with a 2473. David Pruess, who I believe turns 19 this month, is number 3 in the 17 to 18 year old division at 2354. Seventeen year-old Stanford student, Jordy Mont-Reynaud, comes in at the 9 spot with a 2294. I am convinced that there are many more young players in Northern California who could make the top 50 lists. A problem is that they only attend scholastic tournaments and share their rating points with other fine young players. I believe it is time they entered the Open Tournaments as well. Then they could pound on the adults and win some realistic rating points. Go to [http://](http://CalChess.usaweb.nu)

[/CalChess.usaweb.nu](http://CalChess.usaweb.nu) to check out the open matches.

While on the subject of scholastic tournaments, Ray Orwig held the first St. Mark's Quads on October 7 in San Rafael. Ray was kind enough to send me the results. I beg other directors to follow his example.

From Ray:

Here are the results of our first quad of the season. We had a total of 32 players.

1 Edward Chien (1133)	3-0
2 Bennett Blazei (814)	3-0
3 Arina Semionenkova (809)	2.5-5
Lucien Kahn (777)	
4 Stephen Bauman (735)	2-1
Sam Birer (734)	
5 Anna Semionenkova (699)	3-0
6 Brian Shuel (610)	2-1
Alexander Spott (605)	
7 Mikund Chillakanti (594)	2-1
Stephen Cunningham-Bryant (602)	
Stefan Portale (598)	
8 Michael Galindo (Unrated)	3-0

Chessically—————Ray

I received, along with other coaches, from Doug Shaker the following information on the 2001 CalChess State Scholastics:

Chesscoaches:

Riley Hughes and I (Doug Shaker) are busy trying to organize the CalChess Scholastics for 2001. We should have more information to you soon, but we do know the dates - March 3rd and 4th - and the place - Santa Clara Convention Center.

We will also be running more sections this year than last year. We hope this will keep us from having huge sections that are difficult to keep on time and which have no clear first. This also means that we will be giving out more large

trophies for both places and teams. We hope your players and parents will enjoy this. As of now, the sections will be:

Kindergarten

K-3 Unrated

K-3 U 600

K-3 Open

K-6 Unrated

K-6 U650

K-6 U850

K-6 Open

K-8 U850

K-8 Open

K-12 U1000

K-12 Open

More later, as the story develops...

I am sure I am forgetting something I intended to write—but, that is all I can think of now. So until next month—keep playing chess and I hope to see many of you at the **CalChess Quads** in San Leandro on October 22. While you won't see me there, I hope many of you in the area will attend the **October 21, 2000 (Saturday)** Porterville Chess for Kids, Info: Allan Fifield, E-Mail: allan.fifield@jostens.com and the **November 11, 2000 (Saturday)** Fresno Chess for Kids, Info: Allan Fifield, E-Mail: fifiela@aol.com

I may stop by at Ray's **November 4, 2000 (Saturday)** St. Mark's Quads, San Rafael, Info: Ray Orwig, 415-472-8000 extension 2040, E-Mail: rorwig@saintmarksschool.org. I almost made it on October 7 on my way back from a cross-country meet my youngest son Tov ran in at Ukiah, but caught in traffic. I was pleased that five of my Wisdom Chess Team children showed and two walked away with trophies. ■

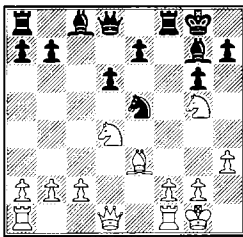
Readers Showcase

Submitted by
Alvin Setzefandt

Ten-year-old Alexander Setzefandt (1658) defeated 2 Masters in a row in Monterey, California on August 27, 2000. Alex won a one-day 3 round swiss event (30/60, g 30), defeating Masters Michael Bruns (2248) and Robert Sfera (2200) in rounds 1 and 2 respectively. This is the first time Alex has beaten a Master at standard time control. The event was directed by Ted Yudacufski (NTD) of the Monterey Chess Center. Annotations by Alexander Setzefandt.

Setzefandt, Alex (1658)
Bruns, M. (2245)

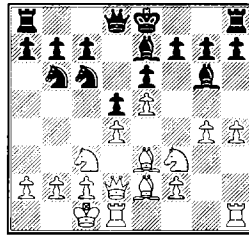
1.e4 c5 2.Nf3 d6 3.d4 cxd4
4.Nxd4 Nf6 5.Nc3 g6 6.Bc4 Bg7
7.O-O O-O 8.h3 Nc6 9.Be3 Nxe4
10.Bxf7+ Kxf7 11.Nxe4 Ne5
12.Ng5+ Kg8



13.Nge6 Qa5 14.Nxf8 Bxf8 15.c3
Nc4 16.Qe2 b5 17.Qf3 Rb8 18.Nc6
Qc7 19.Nxb8 Qxb8 20.b3 Bb7
21.Qg4 Ne5 22.Qe6+ Nf7 23.Bd4
Bc8 24.Bxa7 Qb7 25.Qe3 Ne5
26.Bd4 Nc6 27. Rfe1 e5 28.Bb6 d5
29.Bc5 Bg7 30.Rad1 Be6 31.h4 Qf7
32.Qe2 Qb7 33.h5 e4 34.hxg6 hxg6
35.Bd4 Ne5 36.f3 Qe7 37.Qxb5 Kh7
38.fxe4 Qg5 39.Bxe5 Bxe5 40.exd5
Bh3 41.Qe2 Bd6 42.b4 Qg3 43.Qf3
1-0

Setzefandt, Alex (1658)
Sfera, R. (2200)

1.e4 Nc6 2.Nf3 d6 3.d4 Nf6
4.Nc3 Bg4 5.Be3 e6 6.Be2 Be7
7.Qd2 d5 8.e5 Nd7 9.h3 Bh5 10.O-
O-O Nb6 11.g4 Bg6 12.h4 Qd7

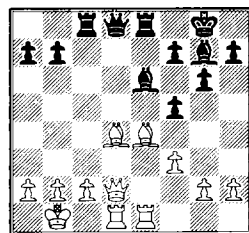


Position after 12.h4

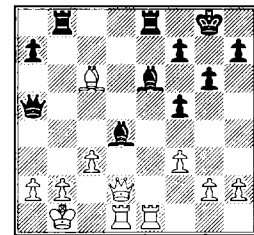
(12...h5 13.g5 Qd7 14.Bd3
Bxd3 15.Qxd3 O-O-O)(12...f6 13.h5
Bf7 14.g5 fxg5 (14...f5 15.g6 Bg8
(15...hxg6 16.hxg6 Rxh1 17.gxf7+
Kxf7 18.Rxh1) 16.h6 hxg6 17.hxg7
Rxh1 18.Rxh1 Qd7 19.Bg5 O-O-O
20.Bxe7 Qxe7 21. Qh6) 15.Nxg5)
13.h5 Be4 14.Nxe4 dxe4
15.Ng5 Qd5 16.b3 Bxg5 17.Bxg5 h6
18.Be3 O-O-O 19. Kb1 f5 20.exf6
gxf6 21.Bxh6 Nxd4 22.Bg7 Nxe2
23.Qxe2 Qe5 24.Bxh8 Rxh8 25.c4
f5 26.Qb2 Qxb2+ 27.Kxb2 Nd7
28.g5 Ne5 29.g6 Rg8 30.Kc3 c5 31.
Rd6 1-0

Submitted by
Eric Schiller NM IA
Andrews,U - Setzefandt,A [B76]
Monterey, 2000
(Schiller)

1.e4 c5 2.Nf3 d6 3.d4 cxd4
4.Nxd4 Nf6 5.Nc3 g6 6.Be3 Bg7
7.f3 O-O 8.Qd2 Nc6 9.O-O-O Nxd4
10.Bxd4 Be6 11.Nd5 Rc8
12.Nxf6+ exf6 [A better plan is
12...Bxf6 13.Bxf6 exf6 14.Qxd6
Qa5 Black has plenty of compen-
sation for the pawn.] 13.Kb1 d5!
The classic Sicilian break is well
timed here. 14.Bd3 Re8 15.Rhe1
dxe4 16.Bxe4 16...f5!



An excellent pawn sacrifice, and one which cannot safely be declined! 17.Bxb7 [17.Bxg7 Qxd2 18.Rxd2 Kxg7 19.Bxb7 loses to 19...Bd5!! 20.Rxe8 Rxe8 White can't capture the bishop **because** of the back rank threat.] 17...Rb8 18.Bc6 [18.Bxg7 Qxd2 19.Rxd2 Kxg7 20.Bc6 Bd7!! A variation on the theme of the last note. 21.Rxe8 Rxe8 22.c4 Bxc6-+] 18...Bxd4 19.c3 [19.b3 Qc7! 20.Bxe8 Bc3-+] 19...Qa5!

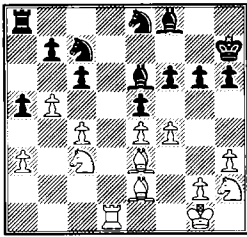


The pressure at a2 forces White to give up more material. 20.Rxe6 Rxe6 21.Qxd4 Rxc6-+ The rest need no comment. White played on until mate. 22.b4 Qc7 23.Kb2 Rc8 24.Rd3 Qxh2 25.Rd2 Qc7 26.Rd3 Qb6 27.Qh4 Rc4 28.Qe1 Qf6 29.Kb3 Qe6 30.Qxe6 fxe6 31.Rd7 Rxc3+ 32.Ka4 R3c7 33.Rd6 Kf7 34.b5 Ke7 35.Ra6 Rd8 36.Ka5 Rd5 37.a4 g5 38.g4 fxg4 39.fxg4 Rd6 40.Kb4 Rxa6 41.bxa6 e5 42.Kb3 e4 43.Kb4 e3 44.Ka5 e2 45.Kb5 e1Q 46.a5 Qb1+ 47.Ka4 Rc4+ 48.Ka3 Rc3+ 49.Ka4 Qb3# 0-1

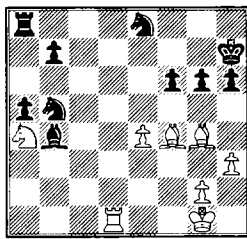
Schiller,E - Wong,R [E73]
Kurt Bendit Rating Tournament
San Francisco (2), 21.08.2000

1.d4 I was in no mood to repeat 1.e4 d5 2.d4 from our last game. I won, but in spite of, not because of, the opening. 1...Nf6 2.c4 d6 3.Nc3 g6 4.e4 Bg7 5.Be2 O-O 6.Bg5 h6 7.Be3 c6 8.Qd2 [8.Bf3 Na6 9.h4 h5 10.Nh3 e5 11.dxe5 dxe5 12.Qb3 Qe7 13.O-O Re8 14.Ng5 Nc5 15.Qa3 brought Black equality in Schiller-Saffern.

Marshall Chess Club 1977.] **8...Kh7 9.h3 e5!?** A new move. [9...a6 was seen in one of the early games in the Averbakh variation. 10.Nf3 d5 11.Bd3 dxe4 12.Nxe4 Nxe4 13.Bxe4 Be6 14.h4 Bf5 15.Bxf5 gxf5 was a bit better for White in Averbakh vs. Ragozin, Soviet Championship #23, 1956.] **10.dxe5 dxe5 11.Qxd8 Rxd8 12.Nf3** I don't think that Black can lay claim to equality here. **12...Ne8 13.0-0 Na6 14.Rfd1 Rxd1+ 15.Rxd1 Be6 16.a3 f6!** Black creates breathing room for the bishop and secures e5, so that the other bishop can operate from f8. **17.b4 Bf8 18.Nh2 Nac7** Black has managed to cover most of the key squares, and it is hard for White to make progress. **19.f4 a5 20.b5!?**



An aggressive pawn sacrifice, which counts on positional pressure as compensation. **20...exf4 21.Bxf4 Bxa3 22.Ng4 Bb4! 23.Na4 cxb5 24.cxb5 Bxg4 25.Bxg4 Nxb5**

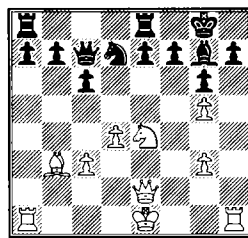


Now it is a two-pawn investment, so it is time to get one back. **26.Rd7+ Ng7 27.e5!** The pawn at b7 can wait, I need more open lines for the bishops. **27...f5 28.Bf3 Re8 29.Rxb7 Nd4 30.Bd1!?** [30.Be3 looks good but has a flaw. 30...Nxf3+ 31.gxf3 Rxe5! 32.Rxg7+! Kxg7 33.Bd4 Kf6 34.f4 Bd6 35.fxe5+ Bxe5 36.Bxe5+ Kxe5 White cannot win, and will struggle to draw.] **30...Re7 31.Rxe7 Bxe7** Well, the middlegame is over and Black is just a pawn down in the endgame. Time to turn on the defensive endgame technique! **32.Nc3**

Nc6 33.Nd5 Bc5+ 34.Kf1 g5 A difficult position. I can't retreat the bishop while the enemy knight eyes e5. **35.Ba4! Nb4 36.Nf6+ Kg6 37.Nd7 Bd4 38.Bd2 Kf7** [38...f4! would have created more problems for White.] **39.Bb3+ Ne6 40.h4 Ke7 41.Nf6!** The weakness at h6 comes to haunt Black. A fork is coming at g8. **41...Nc5 42.Bc4 Bxe5 43.Ng8+ Kf8 44.Nxh6 Ne4 45.Bxg5 f4** [45...Nxc5 46.hxc5 White will exchange off Black's f-pawn and then sac a piece for the other pawn. 46...f4 47.Kf2 Kg7 48.Ng4 Bc7 49.Nh2 Kg6 50.Nf1 Kxg5 51.g3 etc.] **46.Bb5 Nxc5 47.hxc5 Nd5 48.Kf2 Nc3 49.Bc4 Ne4+** [49...a4 50.Nf5 a3 51.g6 a2 52.Bxa2 Nxa2 53.g3=] **50.Ke2 Nxc5 51.Kd3 Ke7 52.Ng4 Bg7 53.Nf2 Be5 54.Bb3 Bc7 55.Kc4** The idea now is to sac for the f-pawn when the a-pawn can be grabbed. **55...Kf6 56.Bc2 Bd6?!** This brings the game to a swift conclusion. Black couldn't win in any case. **57.Ne4+** Draw agreed. ½-½

**Schiller,E - Chethan,K [D00]
Kurt Bendit Rating Tournament
San Francisco, 30.08.2000
[Schiller]**

1.d4 Nf6 2.Nf3 g6 3.Nc3 d5 4.Bf4 Nh5!? **5.Bg3 Nxc3 6.hxc3 Bg7 7.e3 c6 8.Bd3 Nd7 9.e4!?** **dxe4 10.Nxe4 Qb6 11.c3 Qxb2 12.Nfd2 Nb6 13.Rb1** [13.a4!? f5!? (13...Be6 14.a5 Nd7 15.Nc4! Bxc4 16.Bxc4±) 14.Rb1 Qa2 15.Nc5 e5!?] **13...Qxa2 14.Nb3 Be6 15.Bc2 Bxb3** [15...Nc4 16.Ra1 Qb2 17.Rb1 Qa2=] **16.Bxb3 Qa5 17.Ra1 Qf5 18.Qe2 0-0 19.f4!?** [19.g4 Qf4 20.g3 Qc7+] **19...Nd7 20.g4!?** **Qxf4 21.g3 Qc7 22.g5** I can't recall seeing a progression g4-g3-g5 before! **22...Rfe8**



Here White castled **illegally**, and no one noticed! Because ChessBase won't record games with illegal moves, this game had to be

continued in a second computer file. [22...Rfe8 23.Kd2 Probably the best legal move. 23...e6? , the continuation chosen in the game after **23.0-0-0**, would now lose! (23...Nf8! would have given Black a major advantage. We'll never know which line Black would have chosen, but in either case a decisive advantage was possible!) 24.Qh2 Nf8 25.Nf6+ fails to 25...Bxf6 26.gxf6 Qd8 27.Qh4 c5 28.Rhf1 cxd4 29.Qh6 dxc3+ 30.Kxc3 Rc8+ 31.Kb2 Qd4+ 32.Ka2 Rc2+ 33.Bxc2 Qc4+ 34.Kb2 Qb4+ 35.Kc1]

We resume the game after White has castled, illegally. Since neither player, nor the arbiter, noticed, the game just continued. At the outset, let me say that had Black noticed, there would have been winning chances, but also losing chances, as pointed out in the last note of the first part of the game. And for those who wonder why the game has to be split into two computer files, it is because ChessBase doesn't allow illegal moves, even though they are certainly known to have taken place. I was arbiter at a tournament where Viktor Korchnoi, who has had this problem before, was in a position where he wasn't sure if he could castle. His scoresheet was illegible, and because his opponent, Josh Waitzkin, was in time pressure I could not allow Korchnoi access to Josh's scoresheet. Viktor spent a lot of time trying to figure out whether castling was legal. I on the other hand, just didn't realize that my rook had already moved, castled, and if my opponent or arbiter had pointed it out, I would have had to play some other move. Probably would have been wiser for Viktor to simply castle and save time, even if he had to redo the move later.

23...e6 24.Rdf1 c5 25.Ba4 Red8 26.Bxd7 Rxd7 27.Qh2 Qa5! This move would not have been available had I played 23.Kd2 instead of castling illegally. **28.Qxh7+ Kf8 29.Qxg6 Qa1+ 30.Kc2 Qa2+** Time control reached, after a bit of a scramble. **31.Kc1** I expected a repetition here, but instead we get a more interesting continuation,

Continued on page 26

CalChess Gets a New Email List Server

by Doug Shaker

In the past year or two, CalChess has made good use of an email list server that we set up using the email addresses of our members.

The list server allows organizers to send out one email and have it reach several hundred members. The list has also been used, periodically, as a means to discuss items of interest to some CalChess members.

The list had been maintained on a list server operated by my Internet service provider (ISP). However, in mid-September, the machine on which the list server software ran died, taking its disk drive with it. The ISP had not been maintaining a current backup of the machine, so when the disk went, our mailing list went with it. The ISP brought the machine back to a functioning state, but they also told me that they had been purchased by another ISP and, as soon as the merger was complete, the list server would be going away.

Well, the combination of unre-

liable service and future obsolescence proved itself to be quite motivating. I found another supplier. I figured, as long as I have to enter all those addresses all over again, why not do it with a supplier that says they will be around.

The new lists are maintained on a server operated by a company called "eGroups." We maintain two lists, one for CalChess members and one for Northern California tournament directors, coaches and organizers.

I believe I have added everyone to the members list that needs to be added. However, people can change their email addresses frequently and I don't know that the CalChess records are always up to date. If you want to join the CalChess members list, send an email message to calchess-members-subscribe@egroups.com

To send a message to the CalChess members list, send an email to:

calchess-members@egroups.com
If you are a member of the list

and would like to leave the list, send an email to the address: calchess-members-unsubscribe@egroups.com

The members list currently has over 200 hundred members.

Similarly, if you want to join the list for TDs, coaches and organizers, send an email to: calchess-TDs-subscribe@egroups.com

To send a message to the TD list, send your email to:

calchess-TDs@egroups.com
If you are on the TD list and want off, send an email to: calchess-TDs-unsubscribe@egroups.com

The TD list currently has a few dozen members.

If you have any questions or problems with the lists, please send a message to me, Doug Shaker, at any of the following addresses:

calchess-members-owner@egroups.com
calchess-TDs-owner@egroups.com

Visalia Fall Picnic

October 7, 2000

Blaine Park, Visalia

Class	Place	Name	City	Score
Quad I	1 st	Maric Milenko	Bakersfield	3.0
Quad II	1 st	Benjamin Miramontes	Bakersfield	2.5
Quad III	1 st	Michael Marshall	Visalia	3.0
U1200 Swiss	1 st	Andrew Todd	Bakersfield	4.0
	2 nd	Michael Edes	Porterville	3.5



In deep thought at Blaine Park are John Rupp (L) versus Mike Marshall. Immediately behind, Jason Jones (L) faces Bonnie Yost

A perfect fall day in Blaine Park was enjoyed by 42 players. As a glance at the results will show, it was a particularly fine day for our southern friends from Bakersfield. TD's were Allan Fifield and Bonnie Yost.

LERA Thanksgiving Chess Championship!

Date: Saturday and Sunday, Nov 25 & 26, 2000.

Prizes: \$\$2500 based on 100 entries. Limited to 1st 100 entries.

Championship: 2000+ only. \$350-200-125, U2200 \$250-150-100

Reserve: 1600-1999 only. \$225-150-100, U1800 \$200-125-75

Booster: U1600 \$150-100-50 U1400 \$100-50

Registration: 8:00-9:00 Saturday

Rounds: 10:00-3:30, 10:00-3:30

Time Control: 4 round SS, 30/90, SD/60

Entry Fees: \$50 Championship, \$45 Reserve, \$40 Booster

All \$5 more at site. \$10 CalChess discount.

Location: LMER Auditorium, Building 163, located at the north end of 'J' Street at 1st Avenue. Directions: From 101, go north on Mathilda to 3rd Ave.(Java St.). Go left on 3rd Ave to J St (about 3 lights). Turn right on J St., which then dead-ends at 1st Ave in two blocks. Either park in paved lot on the right at the corner, or go across 1st Ave to park in the undefined dirt area (but without blocking further access to the RV storage area beyond).

Entry Form

Name: _____ **Email:** _____ **Phone:** _____

Address: _____ **City:** _____ **Zip:** _____

USCF # : _____ **Rating:** _____ **Exp:** _____

Championship (2000+) **Reserve (1600-1999)** **Booster (Under 1600)**

Entry Fee* The Championship division is \$50, the Reserve is \$45, and Booster is \$40.

\$10 CalChess discount. CalChess Membership: One Year \$15 Scholastic \$13 Two Years \$28 Three Years \$41 Family \$17. Includes quarterly magazine, and discount to most Northern California chess tournaments. ***Entry is \$5 more at site.**

Enclose a check for the correct amount payable to Know Chess!, and mail to 4019 Rector Common, Fremont, CA 94538. For further information, call (510) 623-1889, or email KnowChess@aol.com.

California Lightning!

By
Steve Cohen

On June 18, a new chapter in California chess history was begun when 10 players gathered from all over the world to compete in the first-ever California G/1 minute Championships, sponsored by the World Organization of Lightning-Chess (a.k.a.WOLC; website can be found at <http://lightningchess.webjump.com>). From Norway, Siberia, Canada... and of course California. Ranging in experience from a 6-time U.S. Champion (GM Walter Browne) to two young (10-year-olds) all came ready to enjoy 5 rounds of the most exciting chess imaginable: lightning-chess!

In WOLC events, players play their opponents 3 games each round, alternating colors each game. All games are WOLC-rated; and, are video-taped for use if controversy arises (and to record the moves of the battles). With the Swiss pairings format, the score of each round may become critical to obtaining the overall-highest score by the end of the final round. In case of tie for 1st, a series of 2-game matches (still, at G/1minute control) are played until 1 player emerges with at least 1.5-.5.

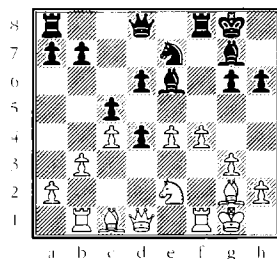
Of course, with Swiss pairing, the first round went pretty much expected, with the top half all enjoying shut-outs of the lower group. But already by the 2nd round the action became sizzling when on Board One, 6-time U.S. Champion, GM Walter Browne found himself matched against Ron Cusi, who emerged from "semi-retirement" to compete in the event; and, on Board 2, a rematch from the play-off of the 1999 U.S. G/1minute Champion-



Vladimir Mezentsev (L) on the move against GM Walter Browne with the omnipotent video camera in the background. Photo by Steve Cohen

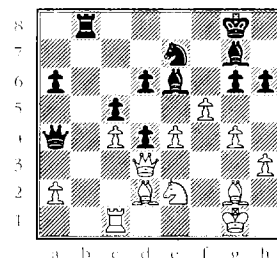
ships between Vladimir Mezentsev (the US G/1min. Champ of '99 and California Open Champion of 2000) and Pierre Vachon. One of the most exciting games of the round was the game-2 battle between Browne and Cusi:

R. Cusi v. W. Browne (2000 Cal. G/1min. Ch., Rd.1 Gm.2): **1.c4 e5** (reverse Sicilian form of English), **2.Nc3 Nc6**, **3.g3 g6**, **4.Bg2 Bg7**, **5.e4 gNe7**, **6.gNe2 O-O** **7.O-O d6**, **8.d3 f5**, **9.h3 h6**, **10.f4 Nd4**, **11.Nd4: ed**, **12.Ne2 fe**, **13.de c5**, **14.Rb1 Be6**, **15.b3**



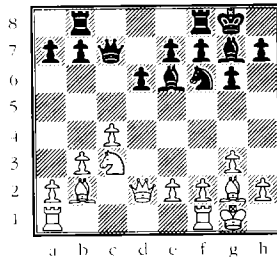
With just under a 4-second lead (51.0-47.2), Browne with Black has built a solid position. Though, if White can get his Ne2 to the excellent blocking square at d3 (say by moving the Bishop off c1, and via that square), each side has chances. There followed: **15...Rb8**, **16.Qd3 a6**, **17.Bd2 b5**

(Browne starts to chip away at White's Queen-side pawns). **18.fRc1** (White swings the Rook over to be ready to meet the charge) **18...bc**, **19.bc Qd7**, **20.g4** (calmly, White presses with his own King-side attack, without ignoring defensive needs on the Queen-side) **20...Qa4** (each side pressing with the attack), **21.Rb8: Rb8:** (Browne enjoys a 7-second lead on the clock and an advantage in position owing to control of the only open file and more active choices for his forces), **22.f5** (White feels forced to press)

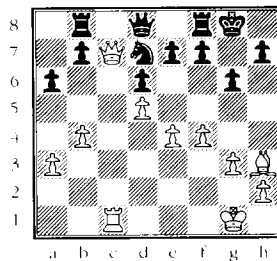


22...Bf7 (perhaps strongest was **22...Qa2:**, threatening "mating the Queen" after **23.fe** with **23...Rb3**), **23.Nf4 g5**, **24.Ne6 Be6:**, **25.fe Qa2:**, **26.Rf1** (Black has a significant lead on the board, while his lead on the clock has been cut to 4 seconds) **26...Rb2** (**26...Ng6**, heading for the nice blocking support point at e5 was probably strongest), **27.Rf2 a5** (so, Black plans to make the most of the outside passed pawn), **28.Be1 Rf2:**, **29.Bf2: a4**, **30.e5 Be5:**, **31.Bd5 a3** (pressing on with the pawn, though times are virtually equal), **32.Qf3 Bf4**, **33.h4 Qb1+** (Black's positional lead is now tremendous, but he is down on time by 5 seconds), **34.Kg2 a2**, **35.hg a1/Q** (**35...Qc1**, first, would have been more prudent; now, only a second separates the players).

36.Qf4: Qh1+, 37.Kg3 Qc3+, 38.Bf3 cQf3:+? (...Qh4+!, 39.Kh4: Ng6+, and 40...Nf4: is the easiest way to victory, but hard to see with such little time remaining), **39.Qf3: Qf3:+, 40.Kf3: hg** (with Black's previous advantage mostly disappeared, it will be pretty much impossible for Browne to make up the 6 seconds he is now down on the clock [13.4:07.9]), **41.Bg3 Kg7?** (Nc8 saves the pawn), **42.Bd6: Kf6, 43.Bc5: Ke6:, 46.Be7: Ke7:** (and the pawn-game is lost for Black), **47.Ke4 Kd6, 48.Kd4: Kc6, 49.c5 Kc7, 50.Ke5 Kc6, 51.Kf5 Kc5:, 52.Kg5: Kd6, 53.Kf5** (Kf6 is better) **Ke7, 54.Kg6 Kf8, 55.Kh7 Kf7, 56.g5 Ke6, 57.g6 Ke5, 58.g7 Kf4, 59.g8/Q** and with about 2.2 seconds left for White, Black's flag mercifully fell, here.



after 13.Nb5 and the Pa7 will fall; better was ...fRc8), **13.aRc1 a6** (stronger for Black, to keep the Nc3 from moving to b5 was ...Qa5, threatening then Pa2), **14.Nd5 Bd5:, 15.cd Qd7, 16.Rc2** (White prepares to double Rooks on the c-file) **16...fRc8** (and Black is ready to dullen their threat), **17.R1c1 Rc2:, 18.Qc2:** (now White has control over the c-file; but, will that be enough?) **18...Qb5** (perhaps a bit better would have been ...Rd8, preparing ...e6, and settling matters in the center), **19.e4 Qa5, 20.a3 Nd7?!** (without any support points will the Knight be as strong as White's Bishop?), **21.b4?!** (21.Bg7: followed by 22.Qc7 was best) **21...Qd8** (not giving a second chance), **22.Bg7: Kg7:, 23.Qc3+ Kg8** (...Nf6 may be a better alternative), **24.Qc7 Ne5?!** (...Nf6 may have offered Black the best chances, though White's advantage is not small) **25.f4 Nd7, 26.Bh3:**



(25.Qd8 followed by 26.Rc7 and if need be 27.Ra7 would net White at least a pawn; but, perhaps White does not want to relieve the pressure and instead wants to increase it!) **26...Nb6, 27.Qd8: Rd8:, 28.Rc7!** (after this invasion, Black's game is not to be saved) **28...Kf8, 29.Rb7: Nc4, 30.a4 Ra8, 31.Bf1 Ne3, 32.Kf2** (32.Be2, first, is better) **Ng4+, 33.Kg2 Rc8** (Black threatens his own invasion of the 7th!), **34.Be2** (all the way to a6 is where the Bishop should have gone

now) **Rc2, 35.Kf3 Nh2:+, 36.Ke3 Rb2** (36...Rc3+ deserved consideration), **37.b5 ab, 38.Bb5:!** (White keeps his passed pawn as most remote) **38...Ng4, 39.Kd4 h5, 40.a5 Rb4+, 41.Kc3 Rb1, 42.a6 Ra1** (getting the Rook behind the pawn, but it is too late to stop it), **43.a7 Kg7, 44.Bc6** (to control the "promoting square") **44...Nf2, 45.Re7: Nd1+, 46.Kd2 Nb2, 47.a8/Q Nc4+, 48.Kc3 Ra8:, 49.Ba8: Ne3, 50.Kd3 Nf1, 51.Ke2 Ng3:+, 52.Kf3 h4, 53.e5 de, 54.fe Nf5, 55.Ra7 Nd4+, 56.Ke4 Nf5**, and before he could hit the clock, Black's flag fell.

In the penultimate round, Cusi was matched against the strong contender, Pierre Vachon. Though starting off a half-point off the lead, Cusi won all 3 games to emerge a full point over Walter Browne (who shut out yours truly), while Mezentsev was a full 2.5 back, notwithstanding his shutout of Jon Hammer, of Norway, who would go on to win the top "Junior" prize.

In the final round, Cusi was paired against the well-worn and very tired TD. Thus, as Ron Cusi easily won all of his games, and finished with 13.5/15 (and earned \$175, the title of 2000 California G/1minute Champion, and a nice trophy), the "real" fight would be for 2nd. Once again, the 2nd spot was earned by Pierre Vachon, who swept his final-round match. GM Walter Browne finished in 3rd, despite dropping 2 of the 3 against Vladimir Mezentsev, who came in a half-point behind Browne, in 4th.

It is not known at this time if the California State Championships will be an annual or biannual event [sponsorship will be a key factor for more regularity]. Still, the U.S. G/1minute Championships are held annually, on the first Saturday of November. For more information about the WOLC, other official WOLC over-the-board and internet events, the new WOLCinterface for use at ChessClub.Com, auto-internet EndGame lessons, how to become a WOLC member, or anything else pertaining to the WOLC or lightning-chess, please contact the WOLC at (650) 349-7746, or e-mail to wolc@pacbell.net [or visit website at <http://lightningchess.webjump.com>].

Cusi ended up going 2.5-.5 against Browne, while Vachon enjoyed some revenge against Mezentsev (2-1); but, lurking on the lower boards, yours truly had won all 6 so far played to find myself leading the group as Round 3 began (a short-lived lead). After a pairings shake-up related to Vachon and Mezentsev just having been paired together, I met Vachon on Board 1 while Cusi was matched against U.S. G/1min. Champ. Mezentsev. While Vachon had little problem winning all of our matches, Cusi was pretty much dominating Mezentsev as well. But, a costly slip by Cusi in their 2nd game tied their individual match 1-1.

The exciting game 3, then, would be decisive!

R. Cusi v. V. Mezentsev (2000 Cal. G/1min. Ch., Rd.3 Gm.3): **1.Nf3 c5, 2.c4 g6, 3.Nc3 Bg7, 4.g3 Nf6, 5.Bg2 O-O, 6.d4 cd, 7.Nd4: Qc7, 8.b3 Nc6** ("Mez" is the first to vary from their first-game encounter, where he unsuccessfully tried 8...a6). **9.Bb2 Nd4:?!** (...d6 is stronger than forcing White to dominate the long diagonal heading towards Black's King), **10.Qd4: d6, 11.O-O** (more cautious than an immediate 11.Nd5!) **11...Be6** (keeping White's Knight off of d5), **12.Qd2 aRb8?!** (allows White a pawn

Computer Implementation and the Internet

MR. DeFEIS: We're looking at how we can get computerized quickly and extensively and really serve our needs that have been long lacking. You'll see Attachment 9 which is a report prepared by Laura Martz which gives some idea as to what it is we're doing. We're basically using the Microsoft ACCESS program and exploring that, which we have, and it's, you know, ready, off-the-shelf software - we already have access to it. Which could handle our national database.

And obviously we still have to tie in things. We have to tie in ratings, eventually; we have to tie in to finance. But because it's an off-the-shelf mainstream program, we think that that's going to be very doable. Laura's report does lay out in more detail what the plan is with some schedule targets, but I think we're approaching it in the right way.

Chessathon

MR. IPPOLITO: We have one item that we spoke about yesterday, Chessathon, and how this also touches a lot of people out there in a positive way, a lots of kids in a positive way. We've gotten a lot of mileage out of it in the past, and we have a couple of people that would like to make a presentation today, if I can -

MS. MARINELLO: I know that in the past, the issue with the Chessathon was, well, a lot of people thought that was a great idea. Many others thought that was not such a great idea. And those from the second group I can say that the reason was it was an issue of retention. A lot of people thought, Well, the kids that come, they play one day, but what is after that?

But in this case, we're viewing these particular events as a way to lobby, to introduce, to bring people, to bring people from other places around Westchester, the same way the program in Yonkers was used as a pilot to extend it to

the point that now we've got the endorsement of 22 cities with all their resources. Now we can move on to the level of saying we've established something there, we can go on to a national level.

And if we have a national level - and if we can see all the housing projects around the country, you know, introducing chess as part of one of their activities, then this is going to be a much bigger picture. So obviously, you know, we don't know how, you know, how far they're going, the kids are going to go in terms of continuing playing the game, but we know that at least they will be exposed to the game. Perhaps one of them may change his or her life because of it. And you know, we're hoping that this will be a much bigger picture in the future. That is why we're doing it.

MR. BARRY: Can I ask a question? The problem with the Chessathon, as I saw it, was that on the carrier the expenses were \$39,000.

MS. MARINELLO: But that was actually - the main issue was the finances, the logistical. This events used to lose, as you mention \$30-40,000. Now, we basically reduced that loss. Last year we lost about \$34.

MR. BARRY: We lost \$3,000.

MS. MARINELLO: But more than anything, what we're proposing here is like revising the guidelines, and you can basically - I don't know, we cannot charge these kids, you know, to come to play. But we're getting - we will be able to get sponsors. We will be able to get financial support from other organizations. So in terms of making it work financially, we can do it. And probably, if you want - if you want to take all the risk away from the USCF, we can do it, too.

Or the way, how this was set up, and I know that may need a lot of provisions, in terms of the fund raising, the USCF office will work on raising funds at a national level. The local organization will do fund raising at a local level. A key is attracting sponsors who look forward to community children events and approaching chess people who are willing to

sponsor, you know, children in chess.

But the main idea is that we're willing to absorb all the risk, if it's a financial risk. We have to be clear, I guess we have to sign an agreement, so if you want to say you can use the name -

MR. BARRY: We used to get money from the Chess Trust for the sets and the boards, but you also used to get money from other organizations like - Chess In The Schools supported the one in Newark. Very big. I mean they sent buses over with kids all over the place. So - but the expenses are very important. I'm just wondering how much you intend to do and how much you expect the USCF to do so.

MS. MARINELLO: Basically, we thought that if you just - Garrett?

MR. SCOTT: Essentially, you're asking for our title.

MS. MARINELLO: For the title.

MR. SCOTT: Title for U.S. Chessathon.

MR. BARRY: That's okay.

MR. SCOTT: So what she's asking, would it be appropriate to move that the executive director negotiate with the idea of entering into an agreement with - do you have an organization?

MS. MARINELLO: We're in the process of forming this organization.

MR. SCOTT: With the organization headed by Ms. Marinello and Mr. Frias for the Chessathon in 2001.

PRESIDENT SMITH: Do you want to make such a motion?

MR. SCOTT: That's what I just did. I apologize.

MS. DuBOIS: Remember a year ago we were talking about having a Chessathon in more than one location, either simultaneously or within a close timeframe? That wouldn't prohibit us from having a few others.

MS. MARINELLO: Of course not. The way I envisioned this, I think the best way to go is for the USCF to give this event to different organizations so they can use it for chess, you know, for chess promotion and we can actually work out an agreement in terms of spon-

sorsnip and everything, or even, you can set up a flat fee and — you know, so people can play.

MR. DeFEIS: Do you have a budget together already, Beatriz, on it?

MS. MARINELLO: No. In fact, that is what I need to do, is my next step. But we can talk about it. I don't think the financial aspect will be a problem at all.

MR. SCOTT: If she's got the City Hall, town hall assisting her, they have a lot of resources available that will not cost them much that will help her budgetarily.

MS. MARINELLO: We have contacts with very influential people in the area there.

MR. FRIAS: I came in late but I heard that there was talk about partnerships, okay? That's the way we see — us in terms of our organization and the USCF, so what we would require from the USCF obviously is going to be the will and the goodwill, too, so that all other organizations in the area and us and the USCF may work together to make it into a great event. That kind of thing. It's like — of course, we're not competing with anybody. And I think that's very important, right? And so this is going to be an open thing where everybody can have a place. I think that's very important. And, of course, we're going to work to have people as true volunteers there, you know, and really, I mean, you know, we see Beatriz, myself, Victor, you know, we're loyal USCF members, okay? So whatever we do is for the greater glory of the USCF. And I think this is important — no, I really do.

MR. SCHLICH: One of the things that impresses me about this program is the fact that it's a long lead time. Something I've seen before I was on staff and after I came on staff is we didn't have the time to properly organize and publicize the events we've done. We've been talking about the need for raising funds, and to raise funds, you have to give the companies you're going to the opportunity to get their name before the public and be associated with chess, which is — I think everybody feels is beneficial. Programs such as what they

have just suggested are a very important step towards getting our name before the public so that we can then go to corporations and solicit sponsorships. So I hope that this will serve as a start in energizing the USCF towards gaining sponsorship through an increased absolutely necessary program.

I'm not talking primarily about purchasing advertising. I think we've got enough appeal in the American and international scene that programs such as that will get us on CNN, NBC, ESPN, and a very important part of the person who is our sponsorship/donations person is getting that publicity. So I think that's something the board should keep in mind. Thank you.

PRESIDENT SMITH: Helen?

MS. WARREN: To what extent, Beatriz, will this necessitate the use of USCF staff?

MS. MARINELLO: Well, in my case, I used to be an insider in many ways. So I know what it takes to basically motivate people in the office to help us. I think they're a group of very committed people, willing to come and help, but most of the employees in the office, they don't view it that way. It's not that easy to bring them as volunteers. I don't know if you agree or disagree with me. Especially in the Chessathons that I was coordinating or had something to do with from the organizational point of view. I would say it will be on a voluntary basis.

MS. WARREN: Perhaps would require their attendance there, but would office time and facilities be used in the preparation stages?

MS. MARINELLO: Actually, that is the — we will be doing all the organizational part of it. I will take the responsibility of organizing the events. So I think if we need the office, we'll be — to a very small extent.

MR. FRIAS: Helen, I would imagine the USCF presence there is up to the USCF, okay? But it will not take office resources, if that's what you were asking.

MS. MARINELLO: No, no.

PRESIDENT SMITH: Let's call the question. If you want to read

the motion, John?

DR. McCRARY: The motion is by Garrett Scott. The executive director is authorized to enter into negotiations for the 2001 Chessathon with Miss Beatriz Marinello and Mr. Victor Frias.

PRESIDENT SMITH: Any discussion? All in favor?

DR. McCRARY: The motion's passed, 8 - 0.

MS. MARINELLO: Thank you.

Alcohol and Tobacco

Any rights that we grant to the sale of Chess Foundation cannot be transferred to a third party without our approval. I have to get back to them. I mentioned earlier about any prohibitions we have on the books about sponsorship, in particular, tobacco and alcohol. If someone could find for me where it says that, I could give them the wording. There was not a concern, of course, for tobacco, but certainly they were thinking about getting a winery as a sponsor, and if we have a prohibition about that, I have to get back to them very quickly.

DR. McCRARY: Just to interject, my recollection is that only pertains to Chess Life advertising, and it's probably not a policy, it's kind of a long-standing unwritten rule.

MR. SCOTT: No, it's written somewhere.

MS. WARREN: Yes, it is.

MR. DeFEIS: If it's only Chess Life advertising —

MS. WARREN: This goes all the way back to Fairfax, when the Fairfax organizers had the tobacco company support and it was then—

MR. SCHULTZ: Yeah, I think tobacco was more in question than the alcohol.

MS. BARRY: I remember they wanted a wine ad.

DR. REDMAN: We'll check. Someone will check.

DR. McCRARY: I've looked through here. There's nothing that I find that pertains to it. There's a general statement under the Chess Life section that says that the editor and publisher will be responsible for ensuring that the overall advertising content in Chess Life are appropriate. They may refuse any advertisements.

There's nothing else that I see about ads.

MR. DeFEIS: No alcohol and tobacco either?

DR. McCrARY: I don't see it in this motion. I thought it was unwritten.

MR. LIEBERMAN: It may be an old delegate motion.

MS. WARREN: Sure, I remember that. It's an old delegate motion that Wayne Barber made.

DR. REDMAN: This is why we have the Sunset provision.

DR. McCrARY: It wouldn't pertain to this.

MS. WARREN: I don't think it would pertain to this. I think it has to do with scholastic.

MR. DeFEIS: That only pertains to the magazine anyway.

DR. McCrARY: And she said something about scholastic.

PRESIDENT SMITH: You can understand alcohol and tobacco not with scholastic.

MR. PETERSEN: If I can address that, maybe six, seven years ago there was an organizer in this area that wanted to run an international event sponsored by Coors beer and he asked specifically whether or not we could give him a cover, Coors beer on the banner in the background. And it was brought up before the delegates. And there was a motion made that we would not accept advertising, tobacco and alcohol.

Advertising

MR. DeFEIS: Advertising. We set some new advertising rates. The existing rates were in place since 1994 or 1995, so advertising rates, we've restructured. And we're developing a rate card for web advertising. We'll be looking at some other things as well, card decks, tournament program advertising, which we basically — I don't want to say we solicit. We basically accept it when it walks in the door. A lot of that is true about *Chess Life*. When I started, I asked, How do we go about getting advertising? I was told, Well, if an advertisement walks in the door, we accept it. So a much more aggressive efforts getting advertisers in our publications and on to the web

is going to be vital to enhancing the revenues that you saw in yesterday's budget. Exchange ads, these are 18 important too where we can get outside the chess world and they can get inside our world, other groups. This is hopefully mutually beneficial. Developing some relationships there. Advertising will become a key part of the marketing function.

Membership

MR. DeFEIS: In membership, we've conducted a membership survey, reported on that yesterday. Attachments 6 and 7 are regular reports that Judy Misner prepares. One shows our membership. Basically we get a monthly report, so we're able to manage it. It's a good tool to see month-by-month where things are happening. So Attachment Number 6 shows the May report, really activity through April 30th. Also, there's a fulfillment report. Just to give an idea to the board and to the others of what volume of work we deal with each day. And that report is on Page 7. You'll see — you know, that's week-by-week, each row is a different week, but you'll see thousands of pieces of mail we're handling, week-by-week. Membership applications. Affiliate applications. Subscriptions. Obviously orders, sales orders. 800 calls. What we're sending out in terms of shipping or equipment. And really, you'll see in the last column, it shows a lot of free material that we give out. People call, we want that outreach to go on. We spend a lot but fulfill a lot of requests for information about USCF.

Scholastics

MR. DeFEIS: In mid April Tom Brownscombe, who is in the last row here, was hired. We're happy about that. As director of scholastic programs. I think as soon as he was there, he left for three trips to Charlotte, Tucson and then Dallas for three scholastic tournaments, which were very successful. One thing implemented very quickly by Tom and Joan DuBois is a press release that we went to one meeting and we heard, Gee,

why can't we have a press release right on-site? I said, I don't know why. Have you asked me for it or somebody for it? They said, Well, yes, we have. In either case, you'll see Attachment 8, there's a new template of a press release that we have available at the tournaments so that when the prizes are given and the kids go back to their 9 local community, they can basically take this, fill in how they scored and there's basic information on the tournament and that will get into, hopefully, into some of the local press. It will help them, and of course it helps USCF that these announcements are made.

Elementary, we just came back from. I recognized Barbara DeMaro there who really jumped in at a time that was crucial because we were in between scholastic directors and obviously that was a key tournament for a lot of reasons this year, and it went very successfully. ■

Join the WBCA

US: \$15 (\$12 under 18 years old)
Foreign, Canada & Mexico: \$17
International Under 18 years: \$14
Life Membership \$250 Affiliates \$30
All sent second class airmail

NAME _____

ADDRESS _____

CITY _____ STATE _____

COUNTRY _____ ZIP _____

USCF RATING _____ FIDE _____

OTHER RATING _____

Send all replies to: **WBCA**

8 Parnassus Road.,
Berkeley, CA 94708
Fax (510) 486-8078
Phone (510) 549-1169

The Jim Hurt Memorial Amateur Tournament

September 22nd to 24th 2000

The Prizes

Drake Wang and Dante Argishti.
1st & 2nd -\$188. each
Steven Krasnov 3rd prize - \$75.
Kevan Gross and Mariusz Krubnik- 1st and 2nd Best "B" -\$83.. each
Sean Gallagher Best Unrated - \$50.
Jack Regan Best "C:" - \$98.
Alan Howe, E. Shaughnessy, Rodell Mapp, and Nat Crawford 2nd Best "C" \$13. each
John Chan Best "D"-\$87.
Ewelina Krubnik 2nd Best "D"- \$53.

#	Name	Rtng	Rd 1	Rd 2	Rd 3	Rd 4	Rd 5	Total
1	Wang Drake	1746	W19	W3	W9	D4	W8	4.5
2	ARGISHTI. Dante	1641	D7	W18	W16	W11	W4	4.5
3	Krasnov Steven	1981	W15	L1	W30	W6	W9	4.0
4	Maxion Angel	1840	W21	W22	W10	D1	L2	3.5
5	Gross Kevan	1725	L9	D17	W19	W12	W13	3.5
6	Krubnik Mariusz	1600	B—	H—	W7	L3	W11	3.5
7	Gallagher Sean	unr.	D2	W29	L6	W24	W16	3.5
8	Lai John	1893	B—	L9	W23	W10	L1	3.0
9	Feliciano Randall	1736	W5	W8	L1	W18	L3	3.0
10	Seid Edward	1719	W35	B—	L4	L8	W23	3.0
11	Oza Nikunc	1672	W23	W25	W26	L2	L6	3.0
12	Regan Jack	1450	L33	B—	W25	L5	W34	3.0
13	Chan John	1386	H—	W34	D24	W28	L5	3.0
14	Karnezes Alex	1732	D31	B—	W28	F—	U—	2.5
15	Howe Allan	1587	L3	D20	D27	W22	H—	2.5
16	Shaughnessy Elizabeth	1575	H—	W31	L2	W20	L7	2.5
17	Crawford Nat	1493	L25	D5	W29	X—	U—	2.5
18	Mapp Rodell	1473	W20	L2	W22	L9	Z—	2.5
19	Krubnik Ewelina	1269	L1	H—	L5	W35	W28	2.5
20	Higgins Derrick	unr.	L18	D15	W31	L16	W21	2.5
21	Dorsam Glenn	1567	L4	L23	W35	W29	L20	2.0
22	Siegrist Daichi	1567	W24	L4	L18	L15	W31	2.0
23	Bukh Yefim	unr.	L11	W21	L8	W25	L10	2.0
24	Sesock Mike	1957	L22	H—	D13	L7	H—	1.5
25	Gross Ben	1874	W17	L11	L12	L23	H—	1.5
26	Karnazes Zachary	1737	B—	H—	L11	F—	U—	1.5
27	Lewis Willaim	1374	H—	L30	D15	H—	U—	1.5
28	Yu Ricky	1334	H—	B—	L14	L13	L19	1.5
29	Kesavaraju Anand	1260	H—	L7	L17	L21	W35	1.5
30	Wood Jared	1246	H—	W27	L3	F—	U—	1.5
31	Plata Tyrone	1139	D14	L16	L20	W34	L22	1.5
32	Hicks Eric	1900	U—	U—	W34	U—	U—	1.0
33	Rudyak Felix	1892	W12	U—	U—	U—	U—	1.0
34	Ely Allyson	1130	H—	L13	L32	L31	L12	0.5
35	Krubnik Emilia	694	L10	H—	L21	L19	L29	0.5

BEGINNERS CORNER

THE "PAWN GAME" REVISITED

by Steve Cohen

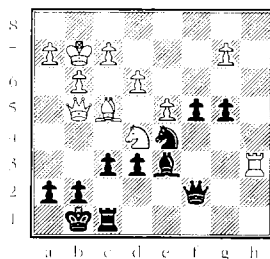
For the past couple of years, I have been very encouraging that new students of any age practice as much as they can with "Pawn Game" (using only pawns, nothing else). After all, chess is a "pawn game!" Indeed, the pieces are only used to mess up the other person's pawn structure; and, once that is done, all of other pieces are exchanged away leaving just King and pawns on the board!

Of course, not only is the "pawn game" easy to teach others (so you can practice it more), and it doesn't take much time to play one game (so in a small amount of time you can play several games so you can practice it even more), but it leads to two immediate benefits (which is why you can't play it too much). First of all, the player who has practiced more "pawn game" will be better prepared for when the chess game reaches the final stages of the endgame, when usually only King and pawns remain. From many practices, the player will have learned of the common strategies and finesses which are so fundamental to helping you be the one who first promotes a pawn into a new Queen. Simply put, endgames will be easier to conduct! Moreover, because a player who practices a lot of "pawn game" will understand better how to conduct endgames, that player will be better able to plan to head to a favorable endgame set-up. That is to say, by knowing what works "when you get there," then you are better able to steer the game to a position you know works (and to stay away from those you know are fatal)!

Sadly, perhaps due to ego, many students are reluctant to practice much "pawn game" out of desire spend the time playing "real chess." But, often I have seen games at all levels affected quite significantly due to a player's understanding (or lack thereof) of very simple "pawn

game" principles. Failure to consider some of the most basic "pawn game" strategies can spoil many hours of good, hard work. On the other hand, much experience with the "pawn game," alone, can only help to compliment a fine battle and serve as a fine, final nail in the coffin and serve quite nicely to close out the game.

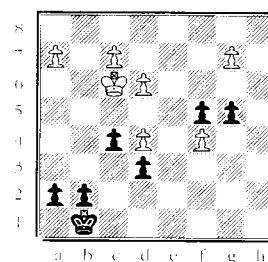
As an example, let's look at a recent game from two well-known GMs: Alexei Dreev from Russia (18th best player in the world, according to the latest FIDE ratings) and Annakov Babakuli (the 176th top player, a.k.a. the very popular "gahan" at ICC), from a recent G/3minute match they played, which we'll join near the latter stages of the middle-game:



Diag. 1

Where, after Dreev's 19...f6 (attacking White's Ne5), Babakuli responded with a tactical threat by 20.Qg4 (threatening 21.Qe6:+ and 22.Qd5:). From the diagram their game quickly headed to an ending after 20...Nf4:+ (avoiding problems with tactical weaknesses of the Nd5), 21.gf (22.ef is a better way) Qb7+ (a double attack on the long diagonal against White's K, and also against the undefended Ra6, forcing White to play...), 22.Rc6 f5 (not immediately 23...Be5:?, hoping for 24.either Pxex5? Qc6: since White still has 24.Qe6:+! first; so Black closes this line by ...f5, which also attacks the enemy Queen), 23.Qf3 Be5:, 24.fe Rc8 (providing "x-ray defense" to Black's Pc4; and, seeking to exchange off all of the pieces

to reach the "pawn game"), 25.Rc5 Qf3:, 26.Kf3: Rc4:, 27.dc. The game has reached the position shown in Diagram 2:

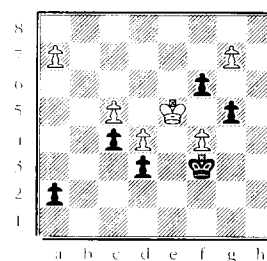


Diag. 2

From here, it is easy to see who will win; and that the win should not be difficult to achieve. For, White's "pawn game" is already lost.

To be sure, the material on the board is mathematically equal: each player has 4 pawns on the King-side; and, two on the Queen-side. But to any seasoned "pawn game" player, White has no chance to save the game: the Pc5 cannot be saved; and with 2P. v. 1P on the Queen-side, White's King will be decoyed away from the King-side pawns, which will also fall.

Thus, from the diagram, play not unexpectedly proceeded 27...Kf7. 28.Ke2 Ke7, 29.f4 Kd7. 30.e4 g6 (Black doesn't give White any chances), 31.ef gf, 32.Ke3 Kc6. 33.Kd4 c3, reaching the position of Diagram Three:



Diag. 3

As we can now see, Black's plan has come together like water molecules in a freezer! To keep Black's c-pawn from promoting, White's King will be forced to abandon not

Continued on page 26

Club Directory

Places to play chess in Northern California and Northern Nevada

Arcata

Tuesday, 4-6 pm
Arcata Community Center
321 Community Park Way
James Bauman
707-822-7619

Berkeley

Friday, 7:15 p.m.
Berkeley City Club
2315 Durant
A. Glasscoe 510-652-5324

Burlingame

Thursday, 7:30 p.m.
Burlingame Lions Hall
990 Burlingame Ave
Scott Wilson 650-355-9402
www.BurlingameChessClub.com

Campbell

Kolty Chess Club
Thursdays 7-11:30 p.m.
Campbell Comm Ctr
Winchester/W.Campbell
F. Leffingwell 408-732-5188
work 408-526-7090
fleffing@cisco.com

Carmel

Call for current information
Randall Swanson
408-626-6113

Carmichael

Monday 6-10 p.m.
Senior Citizens Ctr.
4701 Gibbons

Chico

Thursday 7-11 p.m.
Mtn Mike's Pizza
1722 Mangrove Ave
Barry Nelson 916-873-3107

Davis

Thursday 7 p.m.
Hunt Hall UCD, Room 241
Dave Johnson 916-756-2752

Fremont

Fridays 7:30-11:00
Borders Books-Fremont Hub
Shopping Center
Hans 510-656-8505
hspwood2@home.net

El Dorada Hills

Sundays 5-8 pm
Oak Ridge Library
1120 Harvard Way
El Dorado Hills CA 95762
dreamrider@prodigy.net

Humboldt County

Call for current information
Bob Phillips 707-839-4674

Livermore

Fridays 7-12 p.m.
South Cafeteria
Lawrence Livermore Lab
Charles Pigg 510-447-5067

Merced

Merced Chess Club
Friday 6:30 p.m.
Merced Mall Food Court

Modesto Chess Club

Tuesday 7:00 p.m.
Doctor's Hospital Cafeteria
1441 Florida Ave
John Barnard 209-785-7895

Monterey

Open daily except Mon.
430 Alvarado St.
Yudacufski 408-646-8730

Mt Shasta

Wednesdays 7:00 p.m.
George Washington Manor
Mt. Shasta
Dick Bolling 530-926-3608

Oakhurst

Saturday, 4:00 pm
Cafe Baja
40029 Highway 41
559-642-6333

Paradise

Tuesday 7-10 p.m.
Paradise Senior Center
Barry Nelson 916-873-3107

Porterville

Wednesday 7 p.m.
Trinity Lutheran Church
Corner of Henderson
& Indiana
Hans Borm 559-784-3820

Reno, NV

Sun-Thurs 6:30 p.m.
2850 Wrondel Way, Suite D
Club: 775-827-3867
Jerry Weikel 702-747-1405

Richmond

Fridays 6 p.m.
Richmond Library
26th & MacDonald

Ross Valley (Marin County)

For current info, write:
P.O. Box 69
Ross CA 94957

Sacramento

Wednesday 6-10 p.m.
Senior Citizens Ctr
915-27th St.
Stewart Katz 916-444-3133

Salinas

Any weekend afternoon
Carl's Jr.
1061 N Davis Rd
Abe Mina
831-758-4429

San Anselmo

Tuesday 7 p.m.
Round Table Pizza,
Red Hill Shpping Ctr
Sir Francis Drake Blvd
Jim Mickle 415-457-2719

San Francisco

Mechancis' Institute
Open daily
57 Post St, 4th Floor
John Donaldson
415-421-2258

San Jose

Tue & Fri, Noon-4 p.m.
Willows Senior Center
2175 Lincoln Avenue
Jerry Marshall 408-267-1574

Santa Clara

2d Sat. Each month
2:15-6:15 p.m.
Mary Gomez Park
F. Sierra 408-241-1447

Santa Rosa

Tuesdays 6-10:45 p.m.
Sonoma Coffe Company
521 4th Street
Keith Halonen 707-578-6125

Santa Rosa

1st & Last Saturdays of month
Adult & Youth Chess Club
of Sonoma County
Rincon Valley Library
Conference Room
6959 Montecito Blvd.
Santa Rosa
Mike Haun 707-537-0162

Stanford

Monday 7:30-10:30 p.m.
Student Union, Rm 550-550d
Andrian Keatinge-Clay
415-497-0598

Stockton Chess Club

Fridays 7-11 pm
St. Andrew's Lutheran Church
4910 Claremont Ave.

Sunnyvale

LERA
Tuesday, 8 p.m.
Lockheed Rec Ctr, Bldg #160
Ken Stone 408-629-5530

Vallejo

Thursday 6:15-9:45 pm
Millennium Sports Club
1214 Lincoln Road
(exit Magazine St from Hwy 80)
Duane Catania 707-745-8900

Visalia Chess Club

Tuesday 7 p.m.
Borders Books
Mooney & Caldwell
Allan Fifield 559-734-2784

Woodland Chess Group

Sundays, 3:30-9:00 p.m.
Senior Citizens Center
630 Lincoln Avenue
Don Copeland 530-666-0868

Yuba-Sutter

Mon & Wed 7-11 p.m.
Carls Jr
Bridge St & Hwy 99, Yuba City
Tom Giertych 916-671-1715



Join

CalChess

The Northern California Chess Association

Support Your USCF State Affiliate and receive these Benefits:
Tournament Discounts • California Chess Journal • Youth Chess

One Year \$15 • Two Years \$28 • Three Years \$41
Scholastic One Year \$13 • Family \$17

Name _____

Address _____

City _____ State _____ Zip _____

Phone _____ Amount Enclosed \$ _____

Check One: New Renewal

Mail to: CalChess 2030 Mills Ave. Menlo Park, CA 94025

For Additional Information Call 650-854-9793

C.C.J. Submission Policy

Our CCJ copy submission policy remains 'author friendly'. While our preference is for electronic submission, typewritten or neat handwritten copy is acceptable. Electronic submission allows you to include game scores, chess diagrams, and digitized photos. In general, tournaments submitted in an electronic format will be allotted more space. Our preference is for Microsoft Word files with diagrams created using the Linares font. Please feel free to contact me if you have any questions on how to submit material to *California Chess Journal*.

The next deadline for C.C.J. submissions is January 10th, 2001
Allan Fifield, PO Box 27
Visalia, CA 93279-0027

Days: (559)-651-3300 #371 * Nights:
(559)-734-2784 * FAX: (559)-651-0739

AOL: fifiela@aol.com
Internet: fifiela@jostens.com

Readers Showcase

Continued from page 15

which I had fortunately correctly evaluated. **31...cxd4 32.Rh7 Qa1+ 33.Kc2 d3+!** [33...Qxf1 34.Qxg7+ Ke7 35.Qf6+ Qxf6 36.gxf6+ Kd8 37.Rh8+ Kc7 38.Rxa8+-] **34.Kb3 Qxf1 35.Qxg7+ Ke7 36.Qf6+ Qxf6 37.gxf6+ Kd8 38.Rh8+ Kc7 39.Rxa8 d2 40.Nxd2 Rxd2** The last 9 moves seem forced, and the resulting endgame was, I was confident, a draw. **41.Rf8! Rd7 42.g4 Kd6 43.g5 e5** [43...Ke5 44.Re8 Kf5 45.Re7 Rd6 46.Rxf7 Rb6+! 47.Kc4 Kxg5 was a more promising try.] **44.c4 b6 45.Re8 Rc7 46.Kb4 Rd7 47.Kb5 Rc7 48.Kb4 Rd7 49.Kb5** Agreed drawn. 1/2-1/2

BEGINNERS CORNER

Continued from page 24

only the Pc5, but also be decoyed out of position from being able to assist his King-side pawns. Although in the actual game White resigned here, there could follow 34.bc bc. 35.Kc3 Kc5: (taking the opposition). 36.Kd3 Kd6! (still maintaining the opposition: whereas the immediate outflanking of 36...Kb4 allows White's King to take the opposition with 37.Kd4), 37.Ke3 Kc4 (now is the right time for outflanking), 38.h4 (delaying the inevitable) 38...h5, 39.Kf3 Kd3, 40.Kf2 Ke4, 41.Kg3 Ke3 (retaking the opposition), and White's King will be forced to abandon the f- and e-pawns. The game is over.

With hindsight, it seems clear that Black has the better "pawn game" set-up; and, therefore, rather than to spend the tempi to get the Ra6, White may have done better to bring the Rook only to c1 keeping Black's pawns under restraint. By failing to think about "pawn game" considerations, White gave up all

chances!

Even without using Kings, the "pawn game," then, is excellent practice for learning the types of strategies that are commonly used to win "real" chess endings that often arise. As always, by having a better understanding of this last part of the game, not only do you conduct your forces better, but you are also better equipped for planning and controlling to get to favorable positions (and avoiding unfavorable ones). Very often I have seen hours of hard work spoiled by one player's failure properly to consider "pawn game" implications. Yet, by practicing this simple, quick game, it becomes very easy to avoid getting into a situation from which there is no longer any chance to recover. For, once this last stage of the game is reached, every move is critical to obtaining the most favorable result!

Incidentally, the UPSCL now has automated K+P-endgame lessons available for viewing at ChessClub.com. For more information about using this wonderful, new resource, contact the UPSCL at upscl@pacbell.net or (650) 349-7746.

Tournament Organizers

- JA =Jeff Andersen
P.O. Box 10845,
Napa 94581
(707) 251-8175
zenwabi@aol.com
- JA2 = Joan Arbil
57 Post St.,
Mechanics Rm408 94101
(415)421-2258
- JB = James Bauman
PO Box 904
Arcata 95518
(707)822-7619
- PB = Peter Brett
PBrett@dnamail.com
- SC = Steve Cohen
PO Box 8024
Foster City 94404
(650)349-7746
- BC =Bill Conrad
(510)233-9763
- JD = John Donaldson
57 Post St.,
Mechanics Room 408
94101
(415)421-2258
- TD = Tom Dorsch
P.O. Box 7453,
Menlo Park 94026
(650)322-0955
TomDorsch@aol.com
- AF = Allan Fifield,
PO Box 27,
Visalia 93279
(559)734-2784
fifiela@jostens.com
- MG = Mike Goodall
461 Peachstone Terr.,
San Rafael 94903
(415) 491-1269
- MJG = Michael Ghormley
5120 Alcott Dr.,
Sacramento 95820
(916)388-1601
mikeg@blacksand.com
mjg99@yahoo.com
- MH =Mike Hau
122 Calistoga Rd., #116
Santa Rosa, 95409
(707)538-8157
haunmj@altavista.com
- DH = Dan Holbrook
1220 Elliott #42,
Paradise 95969
- RH = Riley Hughes
4019 Rector Common
Fremont 94538
(510)623-1889
KnowChess@aol.com
- AK = Alan Kirshner
66 Indian Hill Place,
Fremont 94539
(510) 657-1586
hegemon@kirshnerisms.com
- RK = Richard Koepcke
2047 Montecito Ave.#30,
Mountain View 94043
(650)964-2640
richard.koepcke@Sun.com
- TM = Tom Martell
15308 Laverne Drive,
San Leandro 94579
(510)895-5228
tommbod@aol.com
- JM = John McCumiskey
6700 50th St.,
Sacramento 95823-1306
(916)428-5532
jmclmc@lanset.com
- CP = Charles Pigg
429 Vista Ct.,
Livermore 94550
(925)447-5067
- HP = Hans Poschmann
4621 Seneca Park Ave.,
Fremont 94538
(510) 656-8505
hspwood2@home.net
- JP = Jimmy Plumb
1878 W. 11 St. #144,
Tracy 95376
hereshope9@nreach.com
- TR =Tom Reale
520 Oak Drive
Capitola 95010
(831)464-2929
- JS = Joe Salazar
(408)259-4002
JWS345@aol.com
- DS = Doug Shaker
2030 Mills Ave.,
Menlo Park 94025
(650)854-2545
doug@theshakers.org
- SS = Steve Smallwood
1028 Cassia Way,
Sunnyvale 94086
(408) 247-8510
stephen677@aol.com
- DW2 =Dave Wait
84 Carlos Ct
Walnut Creek 94596
- DW = Dennis Wajkus
5924 E. Illinois Ave.,
Fresno 93727-3566
(559) 252-4484
- JW = Jerome Weikel
6578 Valley Wood Dr.,
Reno NV 89523
(775) 747-1405
- SW = Scott Wilson
380 E Esplanade Ave #109
Pacifica 94044
Scott@Burlingame
ChessClub.com
- CW = Carolyn Withgitt
PO Box 6350,
Hayward 94540-5305
(650)322-0955
cdorsch@aol.com
- TY =Ted Yudacufski
PO Box 1308
Monterey 93940
(831)646-8730
darts@earthlink.com
- BY = Bonnie Yost
3701 West Floradora
Fresno, CA 93722
(559)275-0905
yosthouse@aol.com

Tournament Clearinghouse
Riley Hughes
4019 Rector Common
Fremont, CA 94538-2145
(510) 623-1889
KnowChess@aol.com

*Send tournament reports
and annotated games to CCJ:*
Allan Fifield
PO Box 27
Visalia 93279-0027
(559) 734-2784
Fifield@Jostens.com

The CalChess Calendar of Events

(* = CalChess discount) last update 10/2200)

2000

Nov. 18-19 (Sa-Su): 8th Annual Fresno Country Championship (DW)*
Nov. 25-26 (Sa-Su): LERA Thanksgiving (Sunnyvale) (RH)*
Dec. 2 (Sa) Exeter Chess for Kids (AF)
Dec. 10-16 (Su-Sa) Koltanowski Masters (San Francisco) (JD)
Dec. 16-17 (Sa-Su): Sacramento Chess Club Weekend Swiss #6 (JM)*

2001

Jan. 13-14 (Sa-Su): Sojourner Truth Girls' Tourney (Palo Alto) (DS)*
Jan. 13-14 (Sa-Su): Region XI Women's Open (Palo Alto) (DS)*
Jan. 20-22 (Sa-M): Martin Luther King (RK)*
Jan. 27 (Sa) Farmersville Chess for Kids (AF)
Feb. 17-19 (Sa-M): Presidents' Day People's (Berkeley) (MG & RH)
Feb. 24 (Sa): Henry Gross Memorial G/45 (San Francisco) (JA2)
Feb. 24 (Sa) Crestwood Chess for Kids (AF)
Mar. 3-4 (Sa-Su): CalChess State Scholastic (DS & RH)*
Mar. 9-11 (F-Su): A.J. Fink Memorial Amateur (San Francisco) (JA2)
Mar. 24-25 (Sa-Su) Ohlone Spring Sectional (Fremont) (HP)*

Annual Events

2nd weekend Jan (Sa-Su): Sojourner Truth Girls' Tourney (Palo Alto) (DS)
Martin Luther King weekend (Sa-M): Martin Luther King (RK)
Presidents' Day weekend (Sa-M): People's (Berkeley) (MG & AG)
1st weekend March (F-Su): San Francisco Amateur (JA2)
Last weekend March (Sa-Su): State Scholastic Championship (Santa Clara) (AK)
1st weekend May (Sa-Su): Livermore Spring Open (RH)
Weekend prior to Memorial Day (Sa-Su): San Joaquin Championship (Fresno) (DW)
Memorial Day weekend (Sa-M): LERA Memorial Day (Sunnyvale); (JH)
2nd weekend June (F-Su): Stamer Memorial (San Francisco) (JA2)
4th of July weekend (Sa-M): Universe Open (TD)
Labor Day weekend (1st weekend Sept.) (Sa-M): Labor Day Festival (RK)
last weekend Oct. (F-Su): Western States Open (Reno) (JW)
1st weekend Nov. (S-Su): Livermore Fall Open (RH)
2nd weekend Nov. (F-Su): Capps (San Francisco) (JA2)
Weekend Prior to Thanksgiving (Sa-Su): Fresno County Championship (DW)
Thanksgiving Weekend (Sa-M): LERA Thanksgiving (Sunnyvale) (JH)

California Chess Journal

PO Box 27

Visalia CA 93279-0027



Kerry Lawless
27917 PUEBLO SPRINGS DR
Hayward CA 94545

EXP 08/03