

THE CALIFORNIA CHESS REPORTER

Vol. X, Nos. 8-9

\$2.00 per year

April-May, 1961

THE CALIFORNIA CHESS REPORTER, 244 Kearny Street, San Francisco 8
Ten numbers per year

Official Organ of the California State Chess Federation

Editor: Guthrie McClain

Associate Editors: Robert E. Burger, Lafayette; Dr. Mark W. Eudey, Berkeley;
Neil T. Austin, Sacramento; Irving Rivise, Los Angeles

Task Editor: Dr. H. J. Ralston

Games Editor: Valdemars Zemitis

Guest Annotator: Intl. Master Imre Konig

CONTENTS

Westchester Open.....	118-120	Book Review (BlackmarGambit).....	124-125
Castle Chess Club.....	120	California Ratings.....	126-133
U.S. Open in San Francisco...121		Game of the Month.....	134
Central California Teams....122		Games.....	134-143
Central Valley Championship.123		Reporter Tasks.....	144

WEINBERGER WINS WESTCHESTER OPEN

Tibor Weinberger of Glendale, state champion of 1959, won the star-studded Westchester Open in a close finish with Leslie Simon of Los Angeles. Both scored 5-1 in games. The tie was broken on Solkoff points. There followed a number of fine players, including Larry Evans, Zoltan Kovacs, Jerry Hanken, Irving Rivise, Kenneth Grover, Jack Kliger, Ronnie Gross, Gene Rubin, Allan Troy, Bob Jacobs and Saul Yarmak.

CALIFORNIA RATINGS

In this issue we take a first step toward the rating of all active California chessplayers. The more than 500 ratings published herein do not pretend to cover everyone, but we believe this is the biggest rating list so far for California and a step in the right direction.



ISAAC KASHDAN, new President of the California State Chess Federation, takes office with the avowed intention of promoting the State organization with the same enthusiasm previously given to promoting the USCF. Kashdan, International Grandmaster and Captain of the successful American team at this year's chess Olympics, believes that the CSCF can and should offer California players many benefits that come only from a local organization: a locally edited magazine, assistance to local tournaments and city championships, local ratings.

In line with this policy, The Reporter will publish news of local events as it is reported by tournament directors, club secretaries, and league officers. It will be their responsibility to report events on time; The Reporter will not delay issues for unreported events.

TIBOR WEINBERGER WINS WESTCHESTER OPEN

Tibor Weinberger defeated Larry Evans in a thrilling last-round game to win the 6-round Swiss held at Loyola University on January 26-29, 1961. Weinberger played an opening with which Dr. Max Euwe lost to Bobby Fischer at Leipzig in the Chess Olympics, and found an improvement for the black pieces. Leslie Simon tied with Weinberger with a 5-1 score, but had only 16 Solkoff points as against the winner's 23. Evans tied with Zoltan Kovacs and Jerome Hanken for third place, $4\frac{1}{2}$ - $1\frac{1}{2}$. Irving Rivise, Kenneth Grover, Jack Kliger, Ronald Gross, Gene Rubin, Allan Troy, Robert Jacobs, and Saul Yarmak were next with 4-2 scores.

The tournament was promoted by Fred Hazard, Al Pannebakker, Fred Hofeld, and the Westchester Chamber of Commerce, and was directed by International Grandmaster Isaac Kashdan, assisted by Herbert Abel, Le-rooy Johnson, and Richard Herson. It is planned to make the Tourney an annual event.

There were 47 players plus a separate reserve event of 31. After three rounds of the open tournament those players with one point or less were placed in a consolation section. This event was won by Frank Burke with a score of 4-2. The reserve tournament, limited to players with no previous tournament experience, was won by Ed Kennedy.

WESTCHESTER OPEN, 1961	1	2	3	4	5	6	SCORE
1 T. Weinberger	W21	W19	D7	D6	W8	W3	5 - 1
2 L. Simon	W37	D25	D24	W27	W21	W9	5 - 1
3 L. Evans	W27	W11	W12	W4	D9	L1	4½-1½
4 Z. Kovacs	W33	W23	D9	L3	W7	W11	4½-1½
5 J. B. Hanken	W42	L6	W31	D12	W15	W18	4½-1½
6 I. Rivise	W31	W5	D8	D1	D10	D12	4 - 2
7 K. Grover	W16	W17	D1	D10	L4	W21	4 - 2
8 J. Kliger	W32	W18	D6	W26	L1	D10	4 - 2
9 R. Gross	W44	W22	D4	W15	D3	L2	4 - 2
10 E. Rubin	W39	D14	W20	D7	D6	D8	4 - 2
11 A. Troy	W13	L3	W28	W23	W17	L4	4 - 2
12 R. Jacobs	W38	W28	L3	D5	W16	D6	4 - 2
13 S. Yarmak	L14	D16	W44	W20	D14	W22	4 - 2
14 P. Smith	D20	D10	W34	D24	D13	D17	3½-2½
15 S. Sholomson	W29	D24	W25	L9	L5	W23	3½-2½
16 Rod Freeman	L7	D13	W36	W25	L12	W26	3½-2½
17 S. Almgren	W47	L7	W29	W19	L11	D14	3½-2½
18 S. Matzner	W36	L8	D23	W28	W24	L5	3½-2½
19 R. Harshbarger	W40	L1	W32	L17	D26	W24	3½-2½
20 Dr. T. Bullockus	D14	W43	L10	L13	W28	W27	3½-2½
21 L. Standers	L1	W30	W43	W22	L2	L7	3 - 3
22 E. Bersbach	W30	L9	W35	L21	W27	L13	3 - 3
23 W. Cunningham	W26	L4	D18	L11	W25	L15	2½-3½
24 G. Barrett	W45	D15	D2	D14	L18	L19	2½-3½
25 E. Warner	W35	D2	L15	L16	L23	W28	2½-3½
26 R. Martin	L23	W42	W33	L8	D19	L16	2½-3½
27 T. Fries	L3	W46	W40	L2	L22	L20	2 - 4
28 M. Kerllenevich	W46	L12	L11	L18	L20	L25	1 - 5
CONSOLATION SECTION							
29 F. L. Burke	L15	W38	L17	W43	W34	W33	4 - 2
30 C. N. Haley	L22	L21	W41	D44	W36	W31	3½-2½

WESTCHESTER OPEN - CONSOLATION SECTION (continued)

	1	2	3	4	5	6	SCORE
31 D. Young	L6	W37	L5	W42	W32	L30	3 - 3
32 R. W. Moore	L8	W39	L19	W38	L31	W41	3 - 3
33 T. Straus	L4	W47	L36	W40	W37	L29	3 - 3
34 F. Hazari	F	W41	L14	W45	L29	W40	3 - 3
35 G. R. McMahon	L25	W45	L22	L37	W43	W38	3 - 3
36 I. Bosk	L18	D44	L16	W39	L30	W42	2 $\frac{1}{2}$ - 3 $\frac{1}{2}$
37 G. Sheridan	L2	L31	W39	W35	L33	F	2 - 4
38 L. Young	L12	L29	W46	L32	W40	L35	2 - 4
39 J. Kitsianis	L10	L32	L37	L38	W45	W45	2 - 4
40 K. Forrest	L19	Bye	L27	L33	W44	L34	2 - 4
41 D. Baker	F	L34	L39	W46	W42	L32	2 - 4
42 W. Orphan	L5	L26	W47	L31	L43	L36	1 - 5
43 R. Sands	Bye	L23	L40	L49	L45	L46	1 - 5
44 H. Rogovin	L9	D46	L13	D30	L40	F	1 - 5
45 D. Miller	L24	L25	W48	L34	L38	L39	1 - 5
46 V. Novotny	L28	L27	L28	L41	L49	W43	1 - 5
47 E. McGee	L27	L35	L42	W49			1 - 5

See the Games Section for further commentary on this tournament.

SEMITIS WINS CASTLE CHAMPIONSHIP, 1962

In a phenomenal event which has been dominated by Henry Gross in recent years, Val Semitis finally nudged him out for first place by finishing one loss draw. Dan Belmont scored third while former Champion McClain fell off the pace with 2 upset losses. Complete rundown on the players is given in the Games Section.

<u>CASTLE C. C. CHAMPIONSHIP, 1962</u>	1	2	3	4	5	6	7	8	9	10	11	12	SCORE
1 V. Semitis	X	+	1	1	1	1	1	1	1	1	1	1	10-1
2 H. Gross	+	X	1	+	1	1	1	1	1	1	1	1	9 $\frac{1}{2}$ -1 $\frac{1}{2}$
3 D. M. Belmont	0	0	X	0	+	1	+	1	1	1	1	1	7-4
4 G. McClain	0	+	1	X	1	0	+	1	1	1	1	1	6 $\frac{1}{2}$ -4 $\frac{1}{2}$
5 R. Hultgren	0	+	+	0	X	1	+	1	0	1	1	1	6-5
6 W. Hendricks	0	0	0	1	0	X	+	1	0	1	1	1	5 $\frac{1}{2}$ -5 $\frac{1}{2}$
7 M. Eudey	0	0	+	+	+	+	X	0	1	1	0	1	5-6
8 R. Freeman	0	0	0	0	+	0	1	X	0	1	+	1	4-7
9 E. Lien	+	0	0	1	0	1	0	1	X	0	0	+	4-7
10 C. R. Wilson	0	0	0	0	1	0	0	0	1	X	+	1	3 $\frac{1}{2}$ -7 $\frac{1}{2}$
11 G. Farly	0	0	0	0	0	0	1	+	1	+	X	0	3-8
12 P. Traub	0	0	0	+	0	0	0	+	0	1	1	X	2-9

FIRST U.S. OPEN COMES TO SAN FRANCISCO

For the first time in the history of the U. S. Open, this great annual championship will be held in San Francisco. The California delegation successfully bid for the event more than 2 years ago, and preparations have been underway for many months to insure an outstanding tournament.

The U. S. Open will be held at the Sheraton Palace, August 14-27. Games will be at 7:00 P.M. except on Wednesdays and the final Saturday, which will have afternoon games beginning at 1:00 P.M. On Saturday, August 19, a special welcoming brunch will be offered in the Garden Court of the Sheraton Palace, where the Awards Banquet will also take place. The 12-round Swiss is open to all players who are or become USCF members. Entry fee is \$20.00. Cash prizes totalling about \$3,000 will be given. Tournament Director is George Koltanowski.

Tournament Committee Chairman Henry Gross promises one of the largest, most enjoyable tournaments ever. A delegation of foreign players, including Russians, has been invited.

MECHANICS' INSTITUTE TO AWARD ENTRY FEES IN TOURNAMENTS

A series of weekly 30-30 open tournaments will start at the Mechanics' Institute Chess Club in San Francisco on June 10-11, with the first prize in each event to be a \$20.00 entry to the U.S. Open. If the entry list is large enough, additional prizes of \$20.00 entry fees will be awarded.

The tournaments will be five-round Swiss System events, 30 moves in 30 minutes, with 3 rounds on Saturday and 2 on Sunday. In charge will be Arthur B. Stamer, club director, with Clark Jonas doing the pairing. Jonas will be supported by a staff headed by Guthrie McClain.

The entry fees for each tournament will be \$1.00. Contestants who are not already members of Mechanics' Institute are required to join. Membership in the club, with library privileges, costs \$1.00 for initiation and 50¢ per month. The Mechanics' Institute (which has already donated to the U.S. Open Tournament Committee) does not intend to make a profit on the tournaments. Each week at least \$20 will be won, regardless of the number of contestants.

It would seem that this type of tournament could well be imitated by other clubs throughout the State, both to spur summer club activity and to assure additional entries to the U. S. Open.

CENTRAL CALIFORNIA CHESS LEAGUE, 1960-1961Round 5, February 12, 1961Stockton 5½, Oakdale 3½

1 R. Leigh	0	M. Mattingly	1
2 Dr. David-Malig	1	F. Kimball	0
3 N. Shultz	1	J. Sutherland	0
4 T. Layfield	1	C.J. Smith	0
5 R. Mah	1	J. Christiansen	0
6 A. Sanchez	0	P. Oldenburg	1
7 H. Minchaca	0	W. Smith	1
8 M. Sanders	½	Mrs. V. Smith	½
9 A. Saxon	1	J.S. Smith	0

Modesto 6, Pittsburg 0

Pittsburg forfeited all six boards.

FINAL STANDINGS MATCHES PTS

1 San Jose	5	29
2 Sacramento	4	21½
3 Stockton	2½	17
4 Modesto	1½	13
5 Oakdale	1	14½
6 Pittsburg	1	7

Sacramento 4, San Jose 6

1 Dr. A. Janushkowsky	1	J. Blackstone	0
2 O. Celle	0	R. Wilcox	1
3 W. Haines	0	J. Mortz	1
4 W. Sprague	½	D. Foley	½
5 W. Rebold	1	W. Rogers	0
6 H. Byrne	1	B. Mueller	0
7 J. Celle	0	J. Iwashita	1
8 W. Belmont	½	R. Fournier	½
9 Hunting	0	E. Bogas	1
10 R. L. Morgan	0	J. Havill	1

The prize for the best individual score goes to Oakdale's P. Oldenburg, who tallied 4½ points out of 5 playing on the middle boards for Oakdale.

DAVID-MALIG WINS CENTRAL VALLEY CHAMPIONSHIP, 1961

Dr. J. M. David-Malig, one of the perennial Central Valley competitors, this year achieved a long-coveted goal, the CCCL Championship. He thus earns the right to represent the league in the State Championship to be held in Los Angeles next Thanksgiving.

Although the entry list was not graced by many strong Sacramento and San Jose players, David-Malig had to beat Blackstone in the last round to turn the trick. Blackstone represented the league last year. The first prize of \$45 will help defray the cost of the trip to Los Angeles.

Frank Olvera, another CCCL "regular", earned second place on Solkoff points with a fine 3-1 score. The event was held at Stockton on March 11 and 12, 1961.

CCCL CHAMPIONSHIP, 1961	1	2	3	4	SCORE	SOLKOFF
1 Dr. J. M. David-Malig	W14	W11	D4	W5	3½	6½
2 F. Olvera	W12	W6	L5	W9	3	6
3 W. Rebold	W13	D5	W8	D4	3	5½
4 J. Sutherland	W15	W12	D1	D3	3	4½
5 J. Blackstone	W10	D3	W2	L1	2½	6½
6 M. Mattingly	W7	L2	D11	W8	2½	5½
7 C. J. Smith	L6	W15	D12	W11	2½	3½
8 M. Sanders	Bye	W10	L3	L6	2	2
9 B. Burgstahler	L11	W14	W13(F)	L2	2	1
10 T. Layfield	L5	L8	Bye	W14	2	1
11 J. Christiansen	W9	L1	D6	L7	1½	3¼
12 R. Guzman	L2	L4	D7	Bye	1½	1½
13 P. Oldenburg	L3	Bye	L9(F)	F	1	-
14 A. Saxon	L1	L9	W15(F)	L10	1	-
15 B. Bowman	L4	L7	L14(F)	F	0	-

SAN BERNARDINO OVERWHELMS CHINA LAKE IN MATCH

The California Inland League match between San Bernardino and China Lake ended in a clear victory for the former, even without the services of their top men, Ben Schaefer and Roger Smook. Smook is reported to be in Europe. Carl Bitzer was not on hand for China Lake, which weakened their top boards.

San Bernardino 8, China Lake 3

1 S. Skrypzak	1	J. Atkins	0	7 O. Brand	0	B. Allen	1
2 Dr. M. Schlosser	0	S. Schnur	1	8 G. Carlson	1	W. Allen	0
3 T. Delaney	1	Hill	0	9 B. Mahess	1	C. Walden	0
4 Dr. A. Hendy	1	E. Winnemore	0	10 H. Harris	0	C. Wilthamm	1
5 V. Helman	1	Kusterer	0	11 L. Noel	1	P. Alexander	0
6 D. Gibson	1	Vertrees	0				

NEVADA STATE CHAMPIONSHIP WON BY GEORGE KIRBY

George Kirby of Reno won out in tie-breaking points over Harold Edelstein of San Carlos, both with 6-1 scores. The latter received the crown of "Open Champion." The Spring tournament sponsored by R. A. Smith of Harold's Club had an entry list of 30. Some of the California players were Dr. A. Janushkowsky (6th), William Rebold (10th), Ostap Bender (12th), Kyle Forrest (13th), and Leroy Johnson (14th).

Edelstein lost only to the Champion, and posted wins over Rebold, Bender, Johnson, and Gaston Chappuis, who won the same tournament in 1959. Trophies and cash prizes were awarded.

BOOK REVIEW By V. Zemitis

"Vom Ersten Zug an auf Matt" By E. J. Diemer

This highly interesting book tells the story of the development and accomplishments of the Blackmar-Diemer Gambit in the last 25 years. It encompasses more than 300 complete games and almost the same amount of diagrams. The reader will enjoy the combinative character of the games on all 192 pages.

The text is in German, published by Ten Have, Amsterdam, but to a chessplayer there should be no language problem.

This is only the first volume on the subject. Mr. Diemer is working on the second volume and is very much interested in obtaining as many games as possible from all over the world. If you have played a game in the Blackmar-Diemer Gambit, send it to The Reporter and we will be glad to forward it to Mr. Diemer for publication.

If you have missed the fun and success of this gambit, it is high time for you to make the switch and win! And don't believe standard opening books. Not even Dr. Euwe. Many new, startling, and strong (!) lines have been discovered. But buy the book and ascertain the facts for yourself.

Here are a few examples from actual games played in the United States and won by White (!) Notice that there are at least two ways of reaching the Blackmar-Diemer Gambit: (1) 1. P-Q4, P-Q4 2. P-K4, PxP 3. P-KB3 or 3. Kt-QB3; and (2) 1. P-Q4, Kt-KB3 2. P-KB3, P-Q4 3. P-K4, PxP 4. Kt-B3, etc.

Game No. 631 Blackmar-Diemer

White	Black
N. Kampars	W. Deer
(Correspondence, 1957)	
1. P-Q4	P-Q4
2. P-K4	PxP
3. Kt-QB3	P-K4
Weak. See the following games.	
4. KtxP	...
4. P-Q5 is also strong.	
4. ...	PxP
5. B-Kt5ch	B-Q2

6. Q-K2	Q-K2
If BxB, 7. Kt-B6 mate.	
7. B-Kt5	P-B3
7. ... Q-Kt5ch	8. P-B3, QxB
9. Kt-Q6 mate.	
8. B-KB4	BxB
9. QxBch	P-B3
10. Q-K2	P-KB4
11. Kt-Q6ch	K-Q1
12. QxQch	KxQ
13. KtxBPch	K-B2
14. KtxQP and White won.	
When Black improves on 3. P-K4:	

Game No. 632 Blackmar-Diemer

White Black
N. Kampars W. De Atley
(Correspondence, 1957)

- | | |
|-----------|--------|
| 1. P-Q4 | P-Q4 |
| 2. P-K4 | PxP |
| 3. Kt-QB3 | Kt-KB3 |
| 4. P-B3 | B-B4 |
| 5. P-KKt4 | B-Kt3 |
| 6. P-Kt5 | Kt-R4 |

Better is Kt-Q4. Playable is
KKt-Q2.

- | | |
|-----------|-------|
| 7. P-B4 | P-K3 |
| 8. B-K2 | B-Kt5 |
| 9. BxKt | BxB |
| 10. QxB | QxP |
| 11. Kt-K2 | Q-Kt3 |
| 12. Q-R3 | B-B4 |
| 13. KtxP | O-O |
| 14. KtxB | QxKt |
| 15. Q-QB3 | |

and White won.

Game No. 633 Blackmar-Diemer

White Black
N. Kampars R. C. Jackman
(Correspondence, 1957)

- | | |
|-----------|--------|
| 1. P-Q4 | P-Q4 |
| 2. P-K4 | PxP |
| 3. Kt-QB3 | Kt-KB3 |
| 4. P-B3 | PxP |
| 5. KtxP | ... |

For QxP see the next examples.

5. ... P-K3
Better is P-KKt3.
6. B-Kt5 P-B4

Safer is B-K2.

7. BxKt! QxB
On PxB, 8. P-Q5 is possible. For
example 8. ... P-K4 9. B-QB4, B-Q3
10. Kt-KR4!
8. B-Kt5ch B-Q2

- | | |
|------------------------|-----------|
| 9. O-O | PxP |
| Even worse is Q-B5 | 10. K-R1, |
| PxP 11. KtxP, Q-Q3 | 12. Q-B3! |
| 10. KtxP | Q-K2 |
| 11. Q-B3 | BxB |
| 12. KKtxB | P-B4 |
| Or P-QR3? 13. Kt-Q6ch. | |
| 13. QR-Q1 | Q-B4ch |
| 14. K-R1 | Q-Kt3 |
| 15. Q-Kt3 | Kt-R3 |
| 16. Q-K5! | Resigns |

Game No. 634 Blackmar-Diemer

White Black
E. Sneiders Dr. F. G. Lach

- | | |
|-----------|--------|
| 1. P-Q4 | P-Q4 |
| 2. P-K4 | PxP |
| 3. Kt-QB3 | Kt-KB3 |
| 4. P-B3 | PxP |
| 5. QxP | QxP |
| 6. B-K3 | Q-KKt5 |

Weaker is Q-QKt5 7. O-O-O,
B-Kt5 8. Kt-Kt5! Kt-QR3 9.
QxP, R-Q4 10. KtxBPch, KtxKt
11. RxRch, KxR 12. QxQ Resigns
(E. Sneiders - C. Euwer)

- | | |
|------------|---------|
| 7. Q-B2 | P-K4 |
| 8. P-QR3 | P-QR3 |
| 9. Kt-B3 | B-Q3 |
| 10. O-O-O | Q-B4 |
| 11. B-Q3 | P-K5 |
| 12. KtxP | KtxKt |
| 13. Q-R4 | Q-K3 |
| 14. BxKt | P-KB4 |
| 15. Kt-Kt5 | Q-K2 |
| 16. B-Q5 | Kt-Q2 |
| 17. KR-K1 | Resigns |

It is not coincidental that
these games are all short.
Try the Gambit -- but if your
opponent insists on playing a
King's Indian... ah well!

RATINGS OF CALIFORNIA CHESSPLAYERS

On the following pages are the latest available ratings of the U.S. Chess Federation and the California State Chess Federation in this state. There are two groups and two kinds of ratings: The first group is that of CSCF members and the ratings are either USCF ratings or California ratings; the second group is that of USCF members who are not members of the state federation.

In this first publication of California ratings the members of the USCF who are not state members are included mainly as a base for future ratings lists. In the future, only CSCF members will appear in these pages.

The ratings by the USCF come from the December 1960 and April 1961 lists published in Chess Life. In these ratings, the asterisk denotes a provisional rating based on only one rating period, and in a few cases we have gone back to previous ratings to make adjustments. The players not covered by the USCF have been given California ratings based on Southern California ratings (chiefly due to H.D. Rader of the Southern California Chess League) and Northern California ratings by S.H. Van Gelder. Where a double asterisk appears, the rating is provisional and means usually that the rating has been approximated by the means of locating the player in the order of strength of his team - either in his club or in the North-South or other regional match.

The publication of these ratings in The California Chess Reporter may appear overly ambitious to some of our readers. For one thing, the USCF ratings are the nation-wide standard, and when local ratings conflict it will be the USCF figures which will prevail. However, it is a fact that a great many California players are not rated by the USCF and we believe that the advantages of such a comprehensive list as the one which follows outweigh the disadvantages. One day soon, we hope, all our players will have national ratings.

On the technical side: A great deal of scholarly work has been done by the Rating Committee of the USCF. Arpad E. Elo of Milwaukee has performed the lion's share of the computations, but every step has been approved not only by Erich Marchand of Rochester, N.Y., and Guthrie McClain of San Francisco, the other committee members, but also by such well-known local authorities as Jack O'Keefe of Michigan, Harold Bone of Texas, Frank Brady of the USCF, and many others. The various formulae produced by professor Elo have boiled down to this: Average Rating equals the Old Rating plus 16 points for a win, plus or minus 4% of the difference between the ratings. Simple, isn't it?

CALIFORNIA STATE CHESS FEDERATION RATINGS

*-Provisional Rating

***-Provisional CSCF

Herbert T. Abel, Santa Monica	1946	Karl Bopp, San Fran.	1950**
Honorio L. Abella, San Fran.		Harry Borochoy, L. A.	2200/
Samuel A. Abrahams, Berkeley	1960**	Alan W. Bourke, San Fran.	2002
A. C. Acason, Yucca Valley		Barry Bowman, Modesto	
E. B. Adams, Alhambra		Barry Bowman, Pasadena	1780**
Wm. T. Adams, San Jose	2000**	Wm. Bradley, Salinas	
W. G. Addison, San Fran.	2328	Frank R. Brady, N.Y.	1961
Frank Adelman, Berkeley	1960**	A. Wm. Brussell, L. A.	
John Alexander, Poway	2006	T. Bullockus, Pacific Pal.	1897
J. W. Alexander, San Diego	1617	H. Bullwinkel, San Fran.	1969
Bruce Allen, Ridgecrest	1501	R. E. Burger, Lafayette	2116
Sven Almgren, Hollywood	2092	F. L. Burke, L. A.	1960
F. Arvidson, San Fran.		Alan Carpenter, Pasadena	1953
Neil T. Austin, Sacramento	1900**	J. E. Carpenter, Sac.	
Norman D. Babbitt, Buena Park	1601*	Wm. S. Carr, L. A.	2175
Charles Bagby, San Fran.	2000/	R. J. Castle, San Diego	1716
Raymond Bagley, Fullerton	1865	O. Celle, Sacramento	1964
Robert E. Baker, Fresno	1832	J. Celle, Sacramento	1798
Robt. Baldinger, Los Angeles	1776	D. C. Chamberlin, Montebello	
Imre Barlai, San Diego	2110	H. Chamness, Montclair	1649*
Walter Barlow, Oildale	1566*	A. Cherestes, St. Monica	1631
William P. Barlow, Piedmont	2000*	Wm. E. Cook, Pacoima	1426
Gordon S. Barrett, Los Angeles	2000	F. N. Christensen, Oakland	1850**
James E. Barry, Northridge	2090	J. T. Christiansen, Oakdale	1779**
Vartan M. Bedjanian, San Fran.	1746	A. P. Coles, La Jolla	2059
Mark Beiley, San Pedro	1635*	B. S. Collins, St. Monica	1875
Daniel Belmont, San Fran.	2006	A. H. Colow, Beverly Hills	
Victor B. Belmont, Sacramento		D. R. Cotten, Riverside	1844
Ostap Bender, Sacramento	1963	G. Counsil, San Fran.	1862
Kurt Bendit, San Fran.	2000**	Don Crawford, San Mateo	
Donald Benge, Hollywood	1900	G. R. Crumley, San Fran.	
Carl J. Bergman, Berkeley	2000**	R. J. Cunec, Oakland	1860
Emil Bersbach, Los Angeles	2057	W. Cunningham, Arcadia	2117
Herman Beville, Modesto	1785**	W. D. Curdy, No. Highlands	
C. Wesley Bird, Fresno	1825**	Peter Dahl, San Fran.	2033
George Bishop, Inglewood	1960**	E. T. Dana, Los Altos	1822**
Carl W. Bitzer, China Lake	1988	H. S. Dastee, San Fran.	1990
Jim Black, Chula Vista	1666	L. H. Daugherty, San Jose	1829**
John Blackstone, Saratoga	1937	L. E. David, Merced	1830**
Sidney Bleifeld, Los Angeles		R. DeLashmuth, Mariposa	1830**
Charles L. Blek, Inglewood		R. S. Dickinson, Rdwl. City	2035
Robert L. Boles, Berkeley		C. E. Diessan, St. Monica	2052
Erwin Book, Los Angeles	1874	J. L. Dietz, Fairfield	

CALIF. STATE CHESS FED. RATINGS (cont'd)		*-Provisional Rating
		**-Provisional CSCF
I.B. Domanski, LA	1849	Morris Gordon, LA 2094
Tom Dorsch, Oakland	1781*	Newton Grant, San Diego 2002
H. Edelstein, San Carlos	1967	W.J. Griesmeyer, Temple City 1701
A. Eglitis, Pac Palisades	1829**	B.L. Gross, SF 1786
F.G. Eissler, SF	1837**	Henry Gross, SF 2078
Carl Ekoos, Hayward	1740**	Kenneth Grover, Reseda 2200/
E.P. Elliott, Hollywood	2200/	Lena Grumette, Hollywood 1792
Abelson Epstein, SF		R.C. Guzman, Pittsburg 1780**
Mark Eudey, Berkeley	1891	Fred Haeger, San Gabriel 1685*
Michael Ewell, SF	2042*	R.K. Hagedorn, Sun Valley 1841
A. Eydal, SF		Chas. A. Haley, Costa Mesa 1874
N.E. Falconer, Lafayette	2117	Robert Hamman, Van Nuys 2091
George Farly, Berkeley	1862	Jerome B. Hanken, LA 2119
R.L. Farris, San Bruno	1635*	Michael Harris, Dunsmuir 1450
Wm. Feinstein, Berkeley	1646**	Robt. Harshbarger, StaMonica 2032
Leo W. Fielding, LA	1714**	Chas. D. Havill, Los Altos
J. Fletcher, Daly City	1561*	Jerry R. Havill, Sunnyvale
Geo. W. Flynn, Sacramento	1960**	E. Hawksworth, Turlock 1825*
D.J. Foley, San Jose	2077	F.S. Hazard, LA 1843
Irene Ford, Sausalito		C.E. Henderson, LA 1963
Kyle Forrest, Man.Beach	1740	W. Hendricks, South SF 1960**
Irving C. Frank, SF	1761	A.F. Hendy, San Bernardino 1709
L.I. Frankenstein, StaMonica	1967	R.L. Henry, San Mateo 1815
James Fredgren, Oakland	1846	A.E. Hoerchner, Sacramento 1647
Mrs. Jack Freed, LA	1580	Fred R. Hofeld, LA 1840**
Mr. Jack Freed, LA	1865	Emanuel Hoffer, Berkeley 1950**
Rod Freeman, San Diego	2010	David Hoffman, SF
Russell Freeman, Oakland	1843	S.W. Hollingsworth, SanMateo 1831
Tom Fries, LA	2045	V. Homolka, Pac Palisades 1675
Gabriel Garcia, Pittsburg	1780**	I.A. Hood, San Diego
R.J. Gardner, San Diego		Roy Hoppe, SF 1848
Austin Gates, LA	1834	F. Hufnagel, LA 2044
J.B. Gee, Sacramento	2000**	Neilen Hultgren, Berkeley 2031
Mark Gelbard, LA	1657*	Carl Huneke, SF 1776
C.J. Gibbs, Hollywood	1886	Geo. A. Hunnex, Fullerton 2027
A.J. Gilbert, LA	1942*	James B. Hunt, LA 1800
B.F. Giles, Adelanto	1672*	John T. Hurley, SF
D. Dale Gillette, Davis	1759*	Lee Hyder, Berkeley 2002
George F. Goehler, LA	1950**	Fred J. Imhof, San Jose
Norman J. Goldberg, LA	1985	Wm. S. Jachens, San Jose 1585*
Geo. L. Goodrich, Mt. Shasta	1825	Lewis G. Jacobs, Oakland
Hyman Gordon, LA	2006	R.J. Jacobs, Man.Beach
Julius Gordon, Alhambra	1813	John Jaffray, LA 1997

THE CALIFORNIA CHESS REPORTER

129

CALIF. STATE CHESS FED. RATINGS (cont'd)

*-Provisional Rating

**-Provisional GSCF

A. Janushkowsky, Sacramento	1959	R.O. Loveless, N.Hollywood	2002
Monroe Jeffrey, Chula Vista	1786*	M. Lowenthal, SF	
F. Johnson, Yorba Linda	1400*	Chuck Lowery, Venice	
L.F. Johnson, Soquel		G. Lutz, SF	1715
Wm. M. Johnson, Torrance		Thomas Lux, San Diego	2002
L. Johnson, LA	1983	G. Lydeard, SF	1646**
Paul Jolly, Anderson	1500	J.T. Lynch Jr., Upland	1976*
E.C. Jonas, SF	1972**	Steve Mann, Sun Valley	1883
E.O. Jones, Santa Ana		A.W. Markus, Garden Grove	1900
Ted Jones, Lancaster	1740	Don E. Maron, LA	1812
B. Kakimi, Monterey Park	1987	Fred Martin, Livermore	
A.E. Joseph, LA		R.J. Martin, Sta Monica	2133
J.R. Kalisch, SF	2052	W.E. Mattingly, Lodi	1829
Isaac Kashdan, LA	G.M.	Stephen Matzner, Anaheim	2121
H.W. Kastle, Inglewood		R. Maxwell, SF	1950**
H. Keesey, Buena Park	1834	G. McClain, Berkeley	2071
A. Kempner, West LA	1940	R. McCollough, SF	1864
L.H. Kerfoot, Modesto		T. McDermott, Anaheim	1820*
M. Kerllenevich, LA	2009	M. McLennan, SF	1427*
A. Keyes, San Diego	2042	Mrs. D.B. McLeod, Millbrae	1822
H. King, SF	1824	Dan B. McLeod, Millbrae	1882
K. King, Van Nuys	1817	J.M. Mego, LA	2017
Z. Kocsis, La Jolla	1816*	E. Mehwald, Lakewood	
I. Konig, SF	I.M.	L.A. Mercy, San Fernando	1943
Z. Kovacs, LA	2290	F.A. Metz Jr., Northridge	1959
L. Kovner, Berkeley	1451*	E. Milcas, LA	1844
E. Krestini, San Rafael	2117*	D. Miller, LA	1717*
L. Krogness, Modesto	1830**	L. Millstein, LA	1850**
E. Kupka, Berkeley	1829**	B. Mintz, LA	1805
E.S. Ladner, Berkeley		J. Mizrachi, Sun Valley	1800**
Richard Lazaro, LA	1711*	R.W. Moore, Red Bluff	1797
L. Ledgerwood, Oakland	2073	D. Mortz, South Gate	1521*
R. Lee, SF		E.H. Mueller, Campbell	2027
W. Leeds, SF	1950**	D. Nason, SF	1933
Leo Legler, Fresno	1755**	C. Nealis, San Carlos	1917**
F. Leiber, Santa Monica	1980	E. Neely, Anaheim	1833
M.I. Leidner, Canoga Park	1855	V. Newman, El Cajon	
E. Levin, LA	2200/	N.L. Nielsen, SF	1785
E. Lien, Berkeley	1830	L. Noel, Yucaipa	1740*
D.R. Lima, LA	1596**	G.B. Oakes, Salinas	1850**
C.W. Linklater, SF		E.F. O'Connor, LA	1717
J.E. Loftson, El Cerrito	2204	Z.S. Offenbach, LA	1820**
V.M. Lombardi, Burlingame	1402	Y.V. Oganosov, Monterey Pk	1781

CALIF. STATE CHESS FED. RATINGS(CON'T) *--Provisional Rating
 ***--Provisional CSCF

R. K. Oldenburg, Sonora	1780**	C. J. Smith, Oakdale	1779**
F. Olvera, Pittsburgh	1830**	P. D. Smith, Fresno	2069
E. Osburn, Santa Rosa	2145	R. Smook, San Bernardino	2100**
J. Owen, South Gate	1765	F. Smyth, Riverside	1801*
W. Pafnutieff, San Fran.	2094	W. F. Sprague, Sacramento	1899
G. Palmer, St. Monica	2003	L. Standers, Burbank	1957
R. S. Parson, Anderson	1500*	W. Steel, Beverly Hills	1900**
G. S. G. Patterson, L. A.	1721*	T. Straus, L. A.	1992**
G. Piatigorsky, L. A.	1950**	G. Sturges, L. A.	1650
R. J. Plock, Livermore	2013	D. Sutherland, San Fran.	2013
D. V. Poliakoff, L. A.	2100**	J. T. Sutherland, Long Barn	1426*
S. M. Poulsen, Albany	1950**	C. Svalberg, San Fran.	2020
E. Pruner, San Fran.	2291	R. A. Syvertsen, Alhambra	2024
V. Radaikin, San Fran.	1937*	A. Tabash, L. A.	1840**
H. D. Rader, So. San Gabriel	1692	L. Talcott, Oakland	2000**
H. J. Ralston, San Fran.	2200**	A. V. Taylor, Pasadena	1928**
G. H. Rasmussen, Vallejo	1869*	B. Thach, Long Beach	1708
V. Ratnieks, Albany	1864	R. S. Thacker, Richmond	1914
A. L. Raymond, Lancaster	2001	A. C. Thompson, Lancaster	1880**
W. Rebold, Berkeley	1891	J. Thompson, St. Susana	1850**
F. S. Reynolds, San Diego	1734*	L. W. Thompson, Long Beach	1478*
J. B. Reynolds, San Jose	1714	J. Titone, Duarte	2015
I. Rivise, L. A.	2203	A. Tokmakoff, San Fran.	1850**
N. Robinson, L. A.	1844	E. Torrance, Pacific Grove	1581
H. Rogosin, Hollywood	1830	P. Traum, Berkeley	1860
D. Rogosin, L. A.	1746	R. Travers, Long Beach	2000**
P. Rogosin, L. A.	1400*	R. R. Trenberth, Oakland	1850**
H. Rosenbaum, San Carlos	1903	A. R. Trent, Sacramento	1684*
G. L. Rubin, Beverly Hills	2081	Allan Troy, L. A.	2052
R. E. Russell, Atascadero	1850**	L. Tullis, San Lorenzo	1558
F. C. Ruys, Woodside	2017	L. W. Turner, Concord	1900**
J. Sableski, Downey	1715	C. Ulrich, L. A.	1711
M. Saca, Berkeley	1928	G. J. van Deene, Torrance	1965
M. A. Sanders, Manteca	1779**	S. H. Van Gelder, San Fran.	1822
M. Schlosser, San Bernardino	1808	Wm. Van Gelder, Covina	1502**
J. N. Schmitt, San Fran.	2267	G. W. Van Osdol, Montrose	1701**
E. E. Schnoor, Redwood City	1917**	C. B. Walker, Riverside	2017
C. Sedlack, Emeryville	1932	A. Wang, Berkeley	2156
B. A. Shaeffer, San Bernardino	1944	E. Warner, Playa Del Ray	2073
E. Shields, Bakersfield	1912*	I. M. Warner, Sacramento	1943
S. Sholomson, Hollywood	2183	P. J. Waterman, L. A.	1885
S. Skrypzak, Beaumont	1799	D. Weamer, Berkeley	1921*
F. E. Sleep, Fullerton	1843*	F. F. Weinberg, Oakland	1875**

CALIF. STATE CHESS FED. RATINGS (CON'T) *-Provisional Rating
 **--Provisional CSCF

S. Weinbaum, L. A.	2056	B. M. Womack, Fresno	1804**
M. Weinbaum, Palmdale	1651*	Ben Wong, San Fran.	1646
T. Weinberger, Glendale	2822	E. Wraney, San Fran.	1850**
W. Wheeler, L. A.	1850**	S. N. Yarmak, L. A.	2117
R. Wilcox, Salinas	2060	D. L. Young, San Gabriel	1937
M. Wilkerson, San Fran.	1887	V. Zemitis, Hayward	2159
R. P. Willson, San Fran.	1950**	L. Zipfel, Redding	1850**
C. R. Wilson, Oakland	1959	J. Zizda, Monterey Park	1810
E. H. Winger, Riverside	1400	J. R. Zuzow, L. A.	1738
W. T. Winston, Boron	1545		

USCF RATED PLAYERS (NON CSCF MEMBERS) *-Provisional Rating

R. Adler, L. A.	1731*	Jim Brazeal, L. A.	1645*
E. T. Ageno, San Diego	1401*	V. Brickey, Redlands	1615*
H. Ahrens, Compton	1751*	C. L. Budd, St. Monica	1853
P. Alexander, China Lake	1729*	H. L. Byrne, Sacramento	1788
D. Amneus, Monterey Park	2078	L. Busick, San Diego	1486*
N. W. Atchison, Pasadena	1776*	M. B. Call, Arcadia	1790
J. Atkins, China Lake	1701*	R. Cartier, Elsinore	1880
K. Auerbach, San Gabriel	1663*	P. C. Carlton, Lancaster	1517
J. Bagneski, San Diego	1401*	B. Cham, San Diego	1701*
H. Bailey, Long Beach	1699*	D. D. Cohen, Calabasas	1751*
E. B. Baker, Burbank	1401*	W. Colby, Van Nuys	1776
R. B. Baker	1461*	R. D. Cole, China Lake	1527*
R. D. Barber, Bellflower	1431*	J. B. Cross, L. A.	2408
R. Barnes, L. A.	1621*	Jas. Cunningham, Pittsburg	1533*
U. L. Barrett, San Gabriel	1664	M. Custer, La Jolla	1913
E. Bean, L. A.	1976	W. Darrow, Long Beach	1550*
J. Bell, L. A.	1550*	R. Dawson, Palos Verdes	1999
A. R. Benson, San Fran.	1519*	J. DeBriac, St. Monica	1558
R. Benz, South Gate	1900*	J. Detrich, San Diego	1701
R. Berg, Hawthorne	1789*	P. Dobies, Riverside	1752*
S. Berlin, Van Nuys	1771*	D. M. Doyle, Barstow	1504*
F. Bissell, Alhambra	1551*	C. E. Drake, Sacramento	1401*
S. Bissell, Alhambra	1913*	O. C. Dupree, Venice	2048
L. Blackwell, Highland	1401*	M. Edwards, San Bruno	1488
R. Blakemore, San Fran.	1635*	R. Eidemiller, China Lake	1797
E. Bogas, Menlo Park	1932*	E. Enrione, L. A.	1895
R. E. Bond, San Diego	1644*	J. N. Ets-Hokin, San Fran.	1736*
E. Book, L. A.	1974	E. Ferry, Venice	1851*
S. Brannies, So. San Gabriel	1707*	H. L. Finsten, Alhambra	1501*

USCF RATED PLAYERS (NON CSCF MEMBERS)

*-Provisional Rating

K. Firfaroff, Oakland	2027	R. Laver, Glendale	1804*
R. Freeman, Santa Monica	1826*	S.H. Lewis, Malibu	1792*
Frank Frilling, Puente	1798	E. Little, Palmdale	1451*
Fred Frilling, Puente	1795	R. Little	1481*
F. Fults, SF	2109	R. London, LA	1734*
D. Gibson, Barstow	1723*	R. Lorber, Palo Alto	2037
R.D. Gish, LA	1862*	A. Lutz, San Diego	1665*
S.W. Golomb, Pasadena	1871*	R. McIntyre, San Diego	1622
R.J. Greiner, Sacramento	1518	J. Malownay, San Diego	1501*
R. Gross, Compton	2167	S. Mann, Sun Valley	1652*
F.A. Haight, Santa Monica	1957*	W.W. Marseille, Berkeley	1910
W.C. Haines, Sacramento	2046	F. Marshall, Burbank	1811
B.B. Hamilton, West LA	1783*	J. Mayo, Highland	1746*
B. Hannon, Berkeley	1897*	W. Merryman, San Gabriel	1611*
A.S. Harbone, Van Nuys	1551*	A.C. Michaelson, LA	1837
K. Hense, LA	1948*	F. Miller, N. Hollywood	1692*
D. Hestenes, LA	2049*	D. Miller, LA	1693
L. Hillman, Monterey Park	1649*	J. Miller, San Diego	1701*
S. Holbrook, Santa Monica	1630	H. Milner, Sepulveda	1887
L. Hootnick, LA	1726*	D. Molnar, San Diego	1663*
J.W. Horning, San Diego	1711	R. Moody, San Gabriel	1551*
G.E. Hutchinson, Alhambra	1487	P. Mora, LA	1401*
E.J. Hymans, Oakland	1610*	R.N. Morgan, N. Highlands	1645*
D. Hyun, LA	1863*	J.P. Morton Jr., Sacramento	1835
W. Irwin, Alhambra	1656	J. Mortz, South Gate	1972
R.M. Jacobs, Highland	2084	D. Mummert, LA	1512*
R.L. Jamison, Sacramento	1651*	B. Murphy, San Diego	1925
E. Jaruzel, SF	1850*	G.L. Murphy, Encina	1501*
E. Jeffers, LA	1738	J.H. Murray, San Diego	1998
M. Jimenez, LA	1687*	R. Myrho, Sierra Madre	1829
R.N. Jones, West LA	1607*	T. Nast, San Jose	1682*
G. Kern, Paramount	1883	M. Needleman, LA	1741*
J. Kinder	1946*	H. Neisler, Van Nuys	1406*
P. Klaus, Downey	1879	N. Nicholson, Pasadena	1762
E. Klein, LA	1672*	H.S. Nilson, Sherman Oaks	1406*
J. Kliger, LA	2039	N. Nippel, San Diego	1848*
M.C. Kotlan, San Diego	1740	F. Nogay, Northridge	1821*
J. Kovacs, Whittier	1823*	Billy Norrie, El Monte	1451*
D. Krause, Palo Alto	2092	G. Osborne, Redlands	1679*
G. Kuns, Santa Monica	1551*	A. Pabon, LA	1982
H. Kytasty, San Diego	1401*	D. Palmer, Burbank	1722*
J. Laird, LA	1992*	Wm. Parker, Bellflower	1501*
N. Laushkin, Arcadia	1852*	S. Plotnick, LA	1401*

USCF RATED PLAYERS (NON CSCF MEMBERS)

*-Provisional Rating

C. Pollier, San Diego	1729*	S.G. Stevenson, LA	2062
B.H. Ponce, LA	1682*	D.J. Stewardson, Monterey	1812
A. Puchrick, Long Beach	1716*	E. Suhr, Fresno	1735*
Frank Pye, Downey	1772	M. Tamres, Sacramento	1688*
E. Racz, Santa Monica	1734*	L.G. Thompson, El Monte	1920
R.L. Richards, Ridgecrest	1901	W.C. Thornton, San Diego	2032*
J.W. Roberts, Burbank	1406*	L. Tiluks, Downey	2058*
W.R. Rogers, Sacramento	1954	M.L. Trice, San Diego	1421
O. Root, Lancaster	1421	J. Turner, Van Nuys	1602*
D. Sanchez, LA	1909*	D.W. VanArsdale, W. LA	2036*
R. Sandan, Fresno	1562*	D.V. Buren, San Diego	1600
M. Sarley, Pasadena	1774*	T.K. VanDerPluym, Man. Beach	1821*
C.R. Savery, Hamilton AFB	1650	R. Van Horne, Van Nuys	1751*
J.L. Saxey, Granada Hills	1403*	R. Villanueva, San Fernando	1946*
J.C. Scheuerman, Claremont	1861	R. Walmisley, Downey	1755*
B. Schneider, Sherman Oaks	1881*	S.H. Walter, San Fernando	1771*
S. Schnur, Ridgecrest	1765	S. Wanetick, Concord	2249
R.E. Seiden, Glendale	1701	J. Weiner, Burbank	1501*
R. Shorman, Hayward	1757*	P. Weiss, Panorama City	1701*
B. Siff, SF	2251	L. Wilson, Montebello	1501*
R. Skinner, Santa Monica	1825*	J. Winer, Van Nuys	1705*
K. Smith, Sherman Oaks	1884*	E. Winmore, China Lake	1551*
W.O. Smith, Alhambra	1752	D. Young, LA	1936*
J. Sableski, Downey	1671*	M. Yuer, LA	1401*
G. Soules, Berkeley	2151		

WANG, ALMGREN WIN BRILLIANCY PRIZES

Arthur Wang of Berkeley and Sven Almgren of Los Angeles have won \$5 prizes for their games in the California Open of 1959. Wang won a prize for his game against Fries and Almgren won a prize for his game against Shaeffer. International master Imre Konig made the awards.

Prizes for the 1960 California Open are under consideration. We regret the delay in making these awards, but it is necessary to go through a large screening procedure before the finalists are submitted to Mr. Konig.

THE CALIFORNIA BOOK OF CHESS

We sent out a call in the October 1960 issue for the three best games of California players to be collected in a book. So far, only a few have responded, and it looks as though we might publish "Best Games from The Reporter" instead.

GAME OF THE MONTH

The Westchester Open produced many excellent games, but the following encounter between the winner and the favorite must be ranked above the others because of its sporting interest. Evans needed only a draw to win the tournament. He had White. He was playing a variation which Fischer had used effectively against Dr. Euwe. And he is, deservedly, a Grandmaster. How did Weinberger, whose most recent result was a mediocre showing in the California State Championship, expect to win?

Apparently Tibor had an improvement on Euwe's play. He soon showed that his King was safe on KB3, or at least safer than White's on Q1. Once he had the advantage, he tightened the position like a Bongo and began drumming away against White's weak pawns. Weinberger made it look too easy!

Game No. 635 Caro Kann Def.

White	Black		
L. Evans	T. Weinberger		
1. P-K4	P-QB3	23. R-QB1	P-Q6
2. P-Q4	P-Q4	24. R-B4	R-QR4
3. PxP	PxP	25. Q-QB6	QxQ
4. P-QB4	Kt-KB3	26. RxQ	RxP
5. Kt-QB3	Kt-B3	27. B-B4	R-R7
6. Kt-B3	B-Kt5	28. B-Q2	RxP
7. Pxp	KKtxP	29. BxBch	RxB
8. Q-Kt3	BxKt	30. K-Q2	R-Q1
9. PxB	P-K3	31. R-Q1	R-Kt7ch
10. QxP	KtxP	32. K-K1	P-QR4
11. B-Kt5ch	KtxB	33. R-B3	R-K1ch
12. Q-B6ch	K-K2	34. K-B1	R1-K7
13. QxKt5	Q-Q2	35. R1xP	RxPch
14. KtxKtch	PxKt	36. K-K1	P-Kt3
15. Q-K2ch	K-B3	37. R-Kt3	RKt-K7ch
16. B-K3	B-Kt5ch	38. K-Q1	RxRP
17. K-Q1	P-Q5	39. R-R3	RK-KKt7
18. Q-R6ch	K-K2	40. K-B1	R-Kt8ch
19. B-Q2	KR-QKt1	41. R-Q1	RxRch
20. B-B4	R-Kt4	42. K-R1	R-R4
21. P-QB4	R-KB4		
22. B-Kt3	K-B1		

And Black won in a few more moves. A real stunner!

G A M E S S E C T I O N Conducted by V. Zemitis

CASTLE C. C. CHAMPIONSHIP, 1960

It is interesting to consider a tournament or championship of a club player-by-player instead of game-by-game, especially in the case of an established group of players who contest the same event year in and year out. The Castle Club Championship is a good example, and I might make the following comments about the players in the 1960 event.

HENRY GROSS once again showed his marvelous ability to create as well as execute intricate combinations:

Game No. 636 French Defense

White	Black
H. Gross	R. Freeman
1. P-K4	P-K3
2. P-Q4	P-Q4
3. Kt-Q2	PxP
Tarrasch's once-feared move has now lost its sting.	
4. KtxP	B-K2
Tartakower's idea, which prevents White from trading his Queen's Bishop for the Knight (which might happen after 4. ... Kt-KB3, 5. B-Kt5). By the way, B-Q2 and Kt-QB3 have also been tried.	
5. Kt-KB3	Kt-KB3
6. KtxKtch	BxKt
7. B-Q3	Kt-B3
8. P-B3	...
Pachman played B-K3 here against Tartakower (1947), but after P-K4 Black was in no trouble.	
8. ...	O-O (?)
Now was the time for P-K4, as was played by Kottnauer against Dr. Paoli in 1949.	
9. B-KB4	R-K1

10. Q-K2	P-K4 (?)
In this edition the freeing move can be refuted.	
11. PxP	BxP
12. KtxB	KtxKt
13. BxKt	P-KB3
14. O-O-O!	...
Apparently Black overlooked this "out". Now he must take risks with his King to regain the piece.	
14. ...	Q-K2
15. Q-R5	QxB
16. QxPch	K-B1
17. B-Kt6	Q-Kt4ch
18. K-B2	R-K7ch
19. K-Kt1	B-K3
20. Q-R8ch	B-Kt1
21. B-R7	K-B2
22. R-Q7ch	R-K2
23. BxBch	RxB
24. RxRch	K-B1
25. R-K8ch	Resigns

Other examples of Gross combinations are shown in the diagrammed positions on Pages 138-139.

DAN BELMONT manages to steer the game, with White or Black, into heavy positional games resembling a King's Indian. His agile tactical ability, however, carried him to third place in the tournament.

GUTHRIE McCLAIN's placing fourth came as a surprise, especially considering some fine games he played. Time-trouble took its toll. The following game, however, was probably the best in the tournament in spite of a weak defense at move 17.

Game No. 637 QGD, Tarrasch

White Black
R. Freeman G. McClain

1. P-Q4 P-Q4
2. P-QB4 P-K3
3. Kt-KB3 Kt-KB3
4. Kt-B3 P-B4
5. P-K3 Kt-B3
6. PxQP KPxP
7. B-K2 B-Q3
8. P-KR3 O-O
9. O-O B-B4
10. PxP BxP
11. Kt-QKt5 Q-Q2
12. QKt-Q4 KtxKt
13. KtxKt BxP !

It is always a pleasure to see a sacrifice which does not result in a forced sequence of moves. Such games are rare on the local scene.

14. PxB QxP
15. P-B3 ...

Although the text move does not prove satisfactory, it is difficult to suggest a good defense.

Henry Gross recommended P-K4.

15. ... Q-Kt6ch
16. K-R1 Kt-R4
17. P-QR3 ...
P-B4, Q-R6ch 18. K-Kt1, Kt-Kt6
19. B-B3 offered more chances.

17. ... KR-K1
18. Q-Q3 BxKt!
Clearing the square K3 for the Rook.

19. QxB R-K3
20. B-Q3 Q-Kt6ch
21. K-R1 R-KR3
22. Resigns
On P-K4, Kt-B5 leads to mate.

RALPH HULTGREN placed fifth. He has a strong positional sense, especially for certain "Reti" positions. As the diagrammed positions (Pages 138-139) show, he missed a higher placing because of tactical oversights. When his combinations do come off, they are sparkling.

WADE HENDRICKS achieved an even score with careful play. The complexity of his positions seemed to require exceptional care! Only in the openings, where he plays pet lines almost too much, does he falter. His encounters with McClain always seem to run well into the night, when fatigue adds to the natural obstacles of the chessboard!

MARK EUDEY showed the most imagination in the tournament. His ideas were often not quite correct, but interesting just the same. His score does not do justice to his ability. In a clearly won position he lost on time to the writer. Another example:

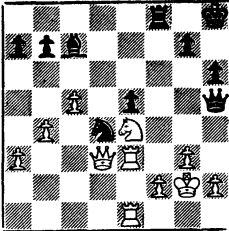
Game No. 638 Evans Gambit

White	Black
M. Eudey	H. Gross
1. P-K4	P-K4
2. Kt-KB3	Kt-QB3
3. B-B4	B-B4
4. P-QKt4	BxP
5. P-B3	B-R4
6. P-Q4	P-Q3
7. Q-Kt3	Q-Q2
8. PxP	B-Kt3
9. KB-Kt5	KKt-K2
10. O-O	O-O
11. B-R3	P-QR3 (?)
12. PxB	PxB
13. PxB	KtxP
14. R-Q1	Q-K1
15. Kt-Q4	B-Q2
16. P-K5	P-B4
17. Kt-B3	P-Kt5
18. Q-Kt2	B-R5
19. R-K1	Kt-Q4
20. PxB	PxB
21. Q-Q2	Q-K3
22. B-Kt2	KR-Q1
23. Kt-Q4	Q-Kt5
24. P-KR3	Q-R4
25. P-K6	P-B3
26. Q-K2	Q-Kt3
27. P-K7	KtxP
28. Q-K6ch	K-R1
29. QxB	Kt-Q4
30. QxKtP2	QR-Kt1
31. Q-R6	Kt-B5
32. P-Kt3	KtxPch

33. K-R2	B-Kt4
34. KxB	Kt-Kt4
35. Kt-Q4	RxKt
36. BxR	Q-R4ch
37. K-Kt1	Kt-B6ch
38. K-Kt2	KtxRch
39. K-B1	Kt-B7
40. Q-Q3	Q-R4ch
41. K-K2	R-K1ch
42. K-Q2	Kt-K8
43. Q-B4	Q-K5
44. K-Q1	Kt-B6
45. Kt-Q2	Q-K8ch
46. K-B2	QxKtch
47. K-Kt3	KtxBch
48. Resigns	

EUGENE LIEN, RUSS FREEMAN, CURT WILSON, GEORGE FARLY, AND PAUL TRAUM rounded out a highly competitive group. In my opinion, these players lack patience, if anything -- the patience to count out combinations and spend the extra time looking for better moves than the obvious. As for myself, my folly with the Latvian Gambit will be reported at another time. Now just a friendly reminder about the Saemisch Variation of the King's Indian: White: V. Zemitis, Black: G. McClain. 1. P-Q4, Kt-KB3 2. P-QB4, P-KKt3 3. Kt-QB3, B-Kt2 4. P-K4, P-Q3 5. P-B3, O-O 6. B-K3, QKt-Q2 7. Q-Q2, P-B4 8. P-Q5, P-QR3 9. P-KKt4, Kt-K1 (See The Reporter No. 1-2, 1960, Game No. 582) 10. P-KR4, P-K4 11. P-R5, P-B3 12. Q-R2, P-KKt4 13. P-R6 and for all practical purposes Black is a piece down.

The diagrams that follow give an idea of the range of play.

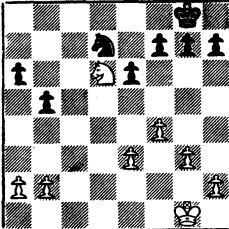
Hultgren-Gross

White is up the exchange and is fairly safe. All he has to do is keep an eye on things...

1. Kt-Q6 RxPch!

Drawn!

Black has a perpetual after KxR.

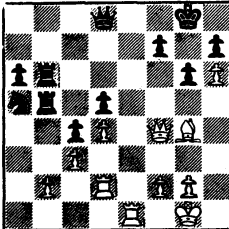
Wilson-Freeman

The Queen's Rook pawn looks like an easy target for the White Knight, so...

1. Kt-K8 K-B1

2. Kt-B7 ? Kt-Kt1

And it is the Knight that's an easy target.

Eudey-Wilson

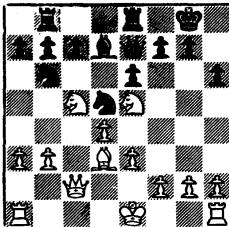
Why can't Black win the KtP?

1. ... RxP

2. RxR RxR

3. Q-B6! Resigns

If Q-KB1, 4. R-K8.

Wilson-Traum

The loser in the above examples now shows how it's done:

1. B-R7ch K-R1

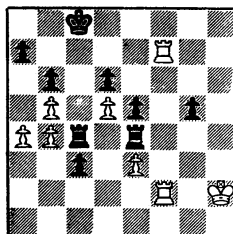
2. B-Kt6! R-KB1

3. BxP! winning

Lien-Freeman

Black was caught in a typical mating net:

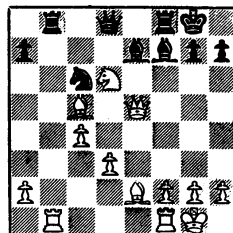
1. R-KKt7 R-B2
2. R-Kt8ch K-Kt2
3. R2-B8 R2-B5
4. R-Kt8ch K-B2
5. R-QR8 K-Kt2
6. KR-Kt8ch K-B2
7. R-B8ch K-Kt2? (K-Q2?)
8. QR-Kt8 mate



Hultgren-Traum

A fine simplifying combination:

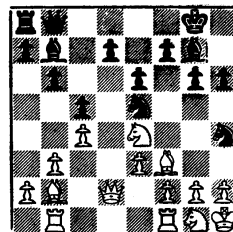
1. KtxB KtxQ
2. KtxQ RxR
3. RxR BxB
4. Kt-K6! etc.



Farly-Hultgren

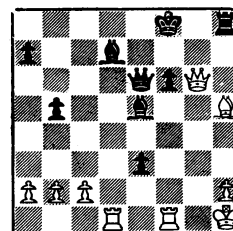
The good Dr. plays another neat combination:

1. ... Kt5xB
2. PxB KtxP!
3. Resigns



McClain-Hendricks

1. KR-Kt1 ...
- Time-trouble. There are good chances after 1. BxB QxR 2. R-Q1, QxRch 3. BxQ RxPch 4. K-Kt1, P-K7, for either side!
1. ... Q-B3ch
 2. K-Kt1 R-Kt1 and won.



CALIFORNIA STATE CHAMPIONSHIP, 1960

Here are two of the better efforts of 2 Northern California players whose games could not be printed last time. Herb Dasteel achieves a good position, but oversights betray him. Frank Hufnagel takes advantage of these with his 36th and 46th moves. In the second game, John Blackstone outplays Bill Addison when the latter optimistically castles long. Instead of 25. ... R-B1, he could have tried Kt-Q4 in order to simplify. Unfortunately for him, he is happy to get the draw when the ending still offered good chances for a win.

Game No. 639 King's Indian

White Black
F. Hufnagel H. Dasteel

1. P-Q4 Kt-KB3
2. P-QB4 P-KKt3
3. Kt-QB3 B-Kt2
4. P-K4 P-Q3
5. P-B3 O-O
6. B-K3 QKt-Q2
7. B-Q3 P-B4
8. P-Q5 Kt-K4
9. Kt-K2 B-Q2
10. P-KR3 Q-R4
11. P-B4 KtxB
12. QxKt P-QR3
13. B-Q2 Kt-KL
14. P-QR4 Q-Kt3?
15. O-O! Q-Q1
16. P-B5 Kt-B2
17. P-R5 B-K4
18. B-R6 B-Kt2
19. BxB KxB
20. Kt-R4 BxKt
21. RxB Kt-KL
22. P-KKt4 Kt-B3
23. Q-B3 K-Kt1
24. Kt-Kt3 Kt-Q7
25. K-R2 P-B3
26. Kt-K2 P-KKt4
27. K-Kt2 Kt-K4
28. Q-KKt3 Q-Q2

29. P-QKt3 K-Kt2
30. R-KR1 P-KR3
31. P-KR4 R-RL
32. R-R2 QR-KB1
33. R-QR1 Q-KL
34. QR-RL QR-Kt1
35. Q-R3 R-B1 ?
36. PxP BPxP
37. Kt-Kt3 QR-Kt1
38. P-B6ch Pxp
39. Kt-B5ch K-B1
40. KtxQP Q-Q1
41. Kt-B5 QxRP
42. R-KB1 KtxBP
43. PxB Kt-R7ch
44. R-B2 Qxp
45. Kt-Q6 Q-Q5
46. Q-R5 R-R2
47. Q-K8ch K-Kt2
48. Kt-B5ch K-RL
49. QxRch KxQ
50. KtxQ PxB
51. RxBP R-Q2
52. P-Q6 P-QKt4
53. K-Kt3 P-Kt5
54. R-R2 K-Kt2
55. P-K5 P-Kt6 and
Resigns

The following game is a good example of the difference between the "will to win" and playing to the score.

53. K-Kt4 P-Kt4

54. K-B3 K-R6

55. Resigns

A tough game to lose after the fine middle game play by Jacobs.

Game No. 642 QGD, Slav Defense

White	Black
P. D. Smith	Dr. T. Bullockus

1. P-Q4	P-Q4
2. P-QB4	P-QB3
3. Kt-KB3	P-K3
4. P-K3	Kt-KB3
5. Kt-B3	P-QR3
6. B-Q3	PxP
7. BxP	P-QKt4
8. B-Q3	B-Kt2
9. O-O	P-B4
10. P-K4	PxP
11. KKtxP	P-Kt5
12. P-K5	PxKt
13. PxKt	KtPxKt
14. PxP	R-Kt1
15. P-B3	B-Q3
16. R-Kt1	Q-B2
17. RxB	BxPch
18. K-R1	Q-Kt6
19. Q-R4ch	K-Q1
20. Q-R5ch	K-K1
21. Q-R4	K-Q1
22. KtxPch	PxKt
23. Q-R5ch	K-B1
24. Q-B5ch	K-Q1
25. Q-K7ch	K-B1
26. Q-B5ch	K-Q1
27. Q-Kt6ch	Draw

3. Kt-QB3	B-Kt2
4. P-K4	P-Q3
5. P-B3	QKt-Q2
6. B-K3	P-K4
7. P-Q5	Kt-R4
8. KKt-K2	O-O
9. Q-Q2	P-KB4
10. O-O-O	P-R4
11. PxP	PxP
12. K-Kt1	Kt-B4
13. Kt-B1	B-Q2
14. Kt-Q3	P-Kt3
15. B-K2	P-R5
16. QR-B1	P-R6
17. KtxKt	KtPxKt
18. P-QKt3	Kt-B5
19. B-Q1	Q-B3
20. P-R4	Kt-R4
21. B-Kt5	Q-Kt3
22. Kt-K2	P-B5ch
23. B-B2	B-B4
24. P-KKt4	PxP
25. KR-Kt1	P-R3
26. B-K3	P-K5
27. P-B4	Q-B3
28. K-B1	Q-Kt7ch
29. K-Q1	QxRP
30. KtxP	KtxKt
31. RxKt	Q-Kt7
32. RxBch	KxR
33. Q-B1	Q-B6
34. B-Q2	Q-Q4
35. Resigns	

Game No. 643 Irregular

White	Black
R. Freeman	R. Jacobs

1. Kt-KB3	Kt-KB3
2. P-KKt3	P-Q4
3. B-Kt2	P-QB3
4. O-O	B-B4
5. P-Q3	QKt-Q2
6. QKt-Q2	P-K3

Game No. 643 King's Indian

White	Black
R. Gross	L. Simon

1. P-Q4	Kt-KB3
2. P-QB4	P-KKt3

Game No. 640 Queen's Gambit Declined

White Black
W. Addison J. Blackstone

1. P-Q4 Kt-KB3
2. P-QB4 P-K3
3. Kt-QB3 P-Q4
4. B-Kt5 B-K2
5. P-K3 O-O
6. Kt-B3 QKt-Q2
7. Q-B2 P-KR3
8. B-B4 P-B3
9. P-KR3 Q-R4
10. Kt-Q3 P-B4
11. O-O-O BxP
12. KxP PxF
13. KtxF Q-Q1
14. P-KKt4(?) Kt-Kt3
15. KtKt PxKt
16. KtKt PxB
17. B-Kt2 P-QKt4
18. P-QR3 Q-R4
19. K-Q2 R-QKt
20. PxF BxP
21. R-B1 B-R5
22. BxB QxR
23. QxQ RxB
24. BxB R-R7
25. B-Kt2 R-B1
26. K-Q3 R-Q3
27. R-B1 B-Q3

Draw Agreed.

WESTCHESTER OPENGame No. 641 Sicilian Defense

White Black
R. Jacobs L. Evans

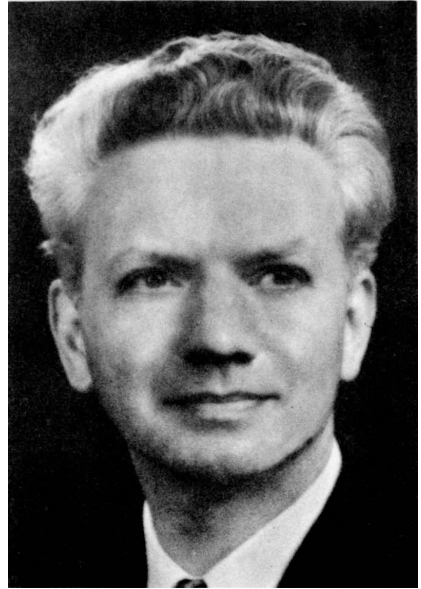
1. P-K4 P-QB4
2. P-QB4 Kt-QB3
3. Kt-QB3 P-KKt3
4. KKt-K2 B-Kt2
5. P-KKt3 P-Q3
6. B-Kt2 Kt-B3

7. P-Q4 FxP
8. KtxP KtxKt
9. QxKt O-O
10. O-O Q-R4
11. Q-Q2 Kt-Kt5
12. Kt-Q5 Q-Q1
13. R-Kt1 P-B4
14. P-Kt3 Kt-K4
15. P-B4 Kt-B3
16. B-Kt2 BxB
17. BxB PxF
18. BxP P-K4
19. Q-K3 B-K3
20. QR-KB2 K-Kt2
21. Kt-B3 PxF
22. RxF BxR
23. QxR Kt-K4
24. K-Kt2 Q-K2
25. Kt-Kt5 P-QR3
26. Kt-B7 R-QKt1
27. KtxB ch QxKt
28. BxP P-QR4
29. B-Q5 Q-K2
30. Q-Q4 R-KB1
31. RxR KxR
32. Q-Kt6 Kt-Q6
33. Q-Kt8 ch K-Kt2
34. Q-Kt7 QxQ
35. RxB Kt-B8
36. K-B3 KtxRP
37. K-K4 Kt-B8
38. K-Q5 KtxP
39. KxF P-R5
40. B-K4 P-R6
41. B-Kt1 Kt-B8
42. P-B5 P-R7
43. BxRP KtxB
44. P-B6 Kt-B6
45. P-B7 Kt-Kt4 ch
46. K-B6 KtxP
47. KxKt K-B3
48. K-Q6 K-B4
49. K-K7 K-Kt5
50. K-B6 K-R6
51. K-Kt5 KxF
52. K-B4 P-R3

OTTO W. ROTHE

We regret to record the death on March 4, 1961, of Otto W. Rothe of San Francisco. Otto was born in Berlin on October 26, 1904 and came to this country in 1935. He started with Safeway Stores and later bought the New St. Francis Market, which he operated until selling out in 1953. Late-ly, he was an employee of the Yellow Cab Co.

Mr. Rothe was a respected member of the Mechanics' Institute Chess Club, where his loss is felt keenly. He was also a veteran member of the Northern California team, having played seven times in the annual team match. He is survived by his wife, Lydian Jean Rothe, and a daughter Marjorie Jean Riley, of San Pablo.



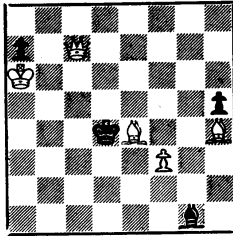
- 7. R-K1 B-B4
- 8. P-K4 PxB
- 9. KtxP BxKt
- 10. PxB Q-Kt3
- 11. Q-K2 Kt-Kt5
- 12. R-B1 O-O
- 13. Kt-K1 Kt2-K4
- 14. Kt-Q3 KtxKt
- 15. PxBt Kt-K4
- 16. B-B4 B-Q5
- 17. B-K3 KR-Q1
- 18. KR-Q1 R-Q2
- 19. R-Q2 QR-Q1

- 20. QR-Q1 Q-Kt5
- 21. B-B1 P-QB4
- 22. P-B4 ...
- This is a mistake, which allows Black to finish neatly.
- 22. ... BxBch
- 23. QxB Kt-B5
- 24. PxBt RxB
- 25. BxB RxB
- 26. P-QR3 ...
- Desperation...
- 26. ... QxBtP
- 27. Resigns

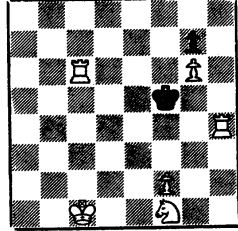
REPORTER TASKS: We present in this issue a pair of problems from Sweden, one from the 1930s and one from the nineteenth century. This is a change of pace from our recent succession of endgames, pending information as to the preference of our readers. (We are contemplating, for Volume XI, a combination of two problems and two endgames for each issue. Please send us your preferences.)

Each problem is worth 5 points. Solutions will count toward a new solving contest which will be announced in Vol. XI.

TASK No. 174
White Mates in Three



TASK No. 175
White Mates in Four



- Solutions: No. 170 (Reti): 1. R-Q3 (or Q2), P-Q5; 2. R-Q1, K-Q5; 3. K-Q7, K-K5; 4. K-B6, P-Q6; 5. K-B5 and wins.
- No. 171 (Moravec): 1. K-Q3, K-Q4; 2. K-B3 ch, K-K5; 3. R-QB2, K-B6; 4. K-B4, K-B5; 5. K-B5 draws.

Solutions to 172 and 173 will be given in the next issue.

Mail solutions to: The California Chess Reporter
244 Kearny Street - 4th Floor
San Francisco 8, California