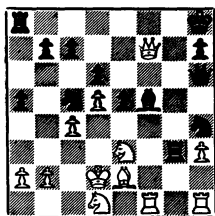


THE CALIFORNIA CHESS REPORTER

SEPTEMBER - OCTOBER, 1966

VOLUME XVI, NUMBER 2

Cuneo-Blackstone



- 24. ... Kt-K5ch
- 25. K-K1 Kt-Kt7ch
- 26. KtxKt Q-Q7 mate

FROM:
244 Kearny Street, San Francisco, Ca. 94108

TO:
David Lawson
111 Montague Street
Brooklyn 2, New York 10002

THE CALIFORNIA CHESS REPORTER

Vol. XVI, No.2

\$2 per year

September-October 1966

THE CALIFORNIA CHESS REPORTER, 244 Kearny Street, San Francisco 94108

Published Bi-monthly

Official Organ of the California State Chess Federation

Editor: Guthrie McClain

Associate Editors: Gordon S. Barrett, Los Angeles; Dr. Mark W. Eudey, Atherton;

Neil T. Austin, Sacramento; Irving Rivise, Los Angeles

Games Editor: William G. Addison

Guest Annotator: Intl. Master Imre König

Reporter Tasks: Robert E. Burger

Second-class postage paid at San Francisco, California

CONTENTS

California Open.....	26-28	Bernard Oak Memorial Open...	38-39
Southern Calif. Championship.....	29-33	Game of the Month.....	39-40
Statement of Ownership.....	29	The Mighty King's Bishop....	41-44
Central California Open.....	33-35	Games.....	44-47
Northern Calif. Championship.....	35-36	Reporter Tasks.....	48
Southern Calif. Amateur.....	36-38		

FRESNO: RIVISE CALIFORNIA OPEN CHAMPION

LOS ANGELES: HENIN WINS SOUTHERN CALIFORNIA OPEN

SUNNYVALE: SCHUTT WINS CENTRAL CALIFORNIA OPEN

SAN FRANCISCO: MENAS NORTHERN CALIFORNIA CHAMPION

As the time drew near for the State Championship, various qualifying tournaments selected seven of the ten finalists for the tournament to be held in San Francisco over the New Year weekend. Irving Rivise won the California Open at Fresno on Labor Day and qualified. Charles Henin, Patrick Eberlein, Robion Kirby and Jerome Hanken won places from the Southern California Championship September 30 October 1-2. Ray Schutt qualified from the Central California Open on October 28-29-30. Borel Menas qualified from the Northern California Championship on October 1-2. These seven players were to be joined by the defending champion, the San Francisco Bay Area Champion and the winner of the Chess Friends of Northern California qualifying tournament to make a field of ten in the finals.

RIVISE WINS CALIFORNIA OPEN CHAMPIONSHIP

Irving Rivise added another title to his collection on Labor Day when he won the California Open at Fresno. Rivise scored $6\frac{1}{2}$ to beat John Blackstone, co-champion last year, by half a point. First prize was \$200 plus a trophy. Blackstone won \$120 for his 6-1 score.

Six players divided third, fourth, fifth and expert prizes: Don Sutherland, Bill Maillard, Arthur Spiller, David Blohm, C.A. Batchelder and Hugh Noland. There were also Class A, Class B, Class C and Ladies prizes. There will be two best game prizes to be awarded by CSCF President Isaac Kashdan (Note: there were no score sheets submitted for the Reporter's prize, a standing offer which all tournament directors should take advantage of.) There were 109 contestants at the Hacienda Motel, a fine showing for tournament director Gordon Barrett's "come back to Fresno" campaign.

CALIFORNIA OPEN, FRESNO 1966

	1	2	3	4	5	6	7	Score
1. I. Rivise	W60	W29	W36	D23	W10	W21	W5	$6\frac{1}{2}$
2. J. Blackstone	W84	W50	W19	W13	D21	D6	W12	6 - 1
3. D. Sutherland	W61	W72	D10	W35	D9	W13	D6	$5\frac{1}{2}$ - $1\frac{1}{2}$
4. W. Maillard	W34	W97	W7	L21	D18	W25	W23	$5\frac{1}{2}$ - $1\frac{1}{2}$
5. A. Spiller	D37	W46	W55	W15	W23	W30	L1	$5\frac{1}{2}$ - $1\frac{1}{2}$
6. D. Blohm	W68	W73	D11	W90	W22	D2	D3	$5\frac{1}{2}$ - $1\frac{1}{2}$
7. C. Batchelder	W85	W75	L4	W33	W31	D9	W16	$5\frac{1}{2}$ - $1\frac{1}{2}$
8. H. Noland	W100	D64	W40	D9	W73	D18	W21	$5\frac{1}{2}$ - $1\frac{1}{2}$
9. E. Wicher	W88	W27	W33	D8	D3	D7	D14	5 - 2
10. J. Jaffray	W66	W51	D3	W24	L1	D26	W33	5 - 2
11. M. Morris	W93	W20	D6	D16	W42	L12	W34	5 - 2
12. R. Bliss	W56	L33	W79	W27	W32	W11	L2	5 - 2
13. W. Bragg	W99	W103	W17	L2	W41	L3	W45	5 - 2
14. O. Bender	W86	W30	W42	L22	D25	W52	D9	5 - 2
15. R. Henry	W64	W101	D24	L5	W90	D22	W30	5 - 2
16. R. Shean	D90	W92	W38	D11	W72	W29	L7	5 - 2
17. H. Mayer	W89	W69	L13	W49	L29	W31	W32	5 - 2
18. J. Tarjan	W98	L83	W89	W53	D4	D8	W37	5 - 2
19. N. Wood	W78	W57	L2	L30	W91	W53	W41	5 - 2
20. K. Stani	W70	L11	L68	W47	W89	W75	W29	5 - 2
21. A. Kanamori	W39	W52	W91	W4	D2	L1	L8	$4\frac{1}{2}$ - $2\frac{1}{2}$
22. S. Matzner	W79	W32	D35	W14	L6	D5	D28	$4\frac{1}{2}$ - $2\frac{1}{2}$
23. L. Kupersmith	W87	W31	W83	D1	L5	W38	L4	$4\frac{1}{2}$ - $2\frac{1}{2}$
24. R. Martin	W58	W25	D15	L10	L38	W56	W55	$4\frac{1}{2}$ - $2\frac{1}{2}$
25. D. Balfe	W108	L24	W39	W68	D14	L4	W52	$4\frac{1}{2}$ - $2\frac{1}{2}$
26. P. Smith	L91	W78	D34	W88	W40	D10	D27	$4\frac{1}{2}$ - $2\frac{1}{2}$
27. R. Karch	W107	L9	W59	L12	W48	W74	D26	$4\frac{1}{2}$ - $2\frac{1}{2}$

CALIFORNIA OPEN (continued)

	1	2	3	4	5	6	7	Score
28. M. Goodall	D109	W76	L90	D34	W68	W60	D22	4½-2½
29. R. Plock	W94	L1	W56	W51	W17	L16	L20	4 - 3
30. A. Wicher	W67	L14	W80	W19	W44	L5	L15	4 - 3
31. F. Harris	W43	L23	W97	W36	L7	L17	W76	4 - 3
32. A. Gates	W65	L22	W84	W45	L12	W39	L17	4 - 3
33. R. Baker	W106	W12	L9	L7	W66	W84	L10	4 - 3
34. D. Argall	W4	W70	D26	D28	W71	W73	L11	4 - 3
35. N. Miller	W48	W53	D22	L3	L52	W82	D38	4 - 3
36. P. Perillo	W59	W45	L1	L31	W58	L41	W68	4 - 3
37. C. Whitman	D5	D54	L72	W81	W63	W49	L18	4 - 3
38. R. Gish	D82	W62	L16	W92	W24	L23	D35	4 - 3
39. D. Lynn	L21	W105	L25	W57	W50	L32	W72	4 - 3
40. S. Sawyer	D62	W47	L8	W82	L26	D59	W70	4 - 3
41. W. Adams	L83	W98	W57	W54	L13	W36	L19	4 - 3
42. R. Carlisle	D76	W109	L14	W87	L11	W90*	D60	4 - 3
43. G. Miller	L31	W85	L45	W59	D79	W54	D44	4 - 3
44. Dr. F. Ruys	W47	L91	W61	D52	L30	W79	D43	4 - 3
45. L. Eaton	W104	L36	W43	L32	W83	W72	L13	4 - 3
46. H. Rader	D54	L5	W95	D55	L53	W89	W75	4 - 3
47. R. Hough	L44	L40	W102	L20	W103	W83	W73	4 - 3
48. D. Wildschutz	L35	W71	L73	W103	L27	W94	W69	4 - 3
49. G. Rasmussen	L101	W93	W66	L17	W87	L37	W65	4 - 3
50. J. McIlrath	W96	L2	L87	W99	L39	W78	W74	4 - 3
51. G. Pickler	W95	L10	W101	L29	L74	W99	W88	4 - 3
52. A. McKenzie	W71	L21	W99	D44	W35	L14	L25	3½-3½
53. R. Cuneo	W105	L35	W74	L18	W46	L19	D62	3½-3½
54. T. Fries	D46	D37	W58	L41	D84	L43	W85	3½-3½
55. A. Lurie	D92	W82	L5	D46	D56	W91	L24	3½-3½
56. J. Mathis	L12	W104	L29	W96	D55	L24	W82	3½-3½
57. C. Fotias	W77	L19	L41	L39	W100	D85	W91	3½-3½
58. H. Edelstein	L24	W94	L54	W65	L36	W98	D63	3½-3½
59. D. Olmsted	L36	W106	L27	L43	W96	D40	W79	3½-3½
60. G. Oakes	L1	L80	W108	W97	W69	L28	D40	3½-3½
61. R. Klein	L3	W63	L44	L70	D80	W92	W94	3½-3½
62. S. Shields	D40	L38	L92	W109	W88	D69	D53	3½-3½
63. Mrs. Grumette	L97	L61	W109	W78	L37	W71	D58	3½-3½
64. R. Cortes	L15	D8	L82	L95	W104	W96	W84	3½-3½
65. V. Fagin	L32	L79	W107	L58	W109	W95	L49	3 - 4
66. A. Hatch	L10	W107	L49	W101	L33	L76	W95	3 - 4
67. T. Heckman	L30	L86	L93	L98	W108	W100	W99	3 - 4
68. C. Huneke	L6	W96	W20	L25	L28	W93	L36	3 - 4
69. V. Laakso	W81	L17	W86	D91	L60	D62	L48	3 - 4
70. T. Mishler	L20	L34	W106	W61	L75	W87	L40	3 - 4

CALIFORNIA OPEN (continued)

	1	2	3	4	5	6	7	Score
71. P. Mitchell	L52	L48	W98	W85	L34	L63	W93	3 - 4
72. Dr. R. Moore	W80	L3	W37	W75	L16	L45	L39	3 - 4
73. E. Mueller	W74	L6	W48	W83	L8	L34	L47	3 - 4
74. D. Rhodes	L73	BYE	L53	W86	W51	L27	L50	3 - 4
75. C. Wilson	W102	L7	W103	L72	W70	L20	L46	3 - 4
76. J. Wilson	D42	L28	L88	W104	D95	W66	L31	3 - 4
77. W. Wise	L57	L99	L94	L102	W105	W103	W97	3 - 4
78. F. Berry	L19	L26	W105	L63	W102	L50	D83	2½-4½
79. R. Bobo	L22	W65	L12	W93	D43	L44	L59	2½-4½
80. R. Clark	L72	W60	L30	L84	D61	L88	W102	2½-4½
81. J. Cornwell	L69	L89	W100	L37	L85	W101	D87	2½-4½
82. J. Dix	D38	L55	W64	L40	W97	L35	L56	2½-4½
83. R. Gribble	W41	W18	L23	L73	L45	L47	D78	2½-4½
84. B. Gross	L2	W108	L32	L80	D54	L33	L64	2½-4½
85. R. Hall	L7	L43	W104	L71	W81	D57	L54	2½-4½
86. W. Jachens	L14	W67	L69	L74	L94	D102	W98	2½-4½
87. G. Mattingly	L23	W102	W50	L42	L49	L70	D81	2½-4½
88. R. McCollough	L9	D95	W76	L26	L62	W80	L51	2½-4½
89. M. Tupas	L17	W81	L18	W94	L20	L46	D92	2½-4½
90. J. Varis	D16	W100	W28	L6	L15	L42*	-	2½-4½
91. P. Vayssie	W26	W44	L21	D69	L19	L55	L57	2½-4½
92. J. Batchelder	D55	L16	W62	L38	-	L61	D89	2 - 5
93. S. Bettencourt	L11	L49	W67	L79	W107	L68	L71	2 - 5
94. W. Bettencourt	L29	L58	W77	L89	W86	L48	L61	2 - 5
95. R. Boles	L51	D88	L46	W64	D76	L65	L66	2 - 5
96. J. Bush	L50	L68	BYE	L56	L59	L64	W105	2 - 5
97. H. Mager	W63	L4	L31	L60	L82	W106	L77	2 - 5
98. P. Nielsen	L18	L41	L71	W67	W101	L58	L86	2 - 5
99. L. O'Doan	L13	W77	L52	L50	W106	L51	L67	2 - 5
100. R. Oyler	L8	L90	L81	W105	L57	L67	W106	2 - 5
101. T. Vittum	W49	L15	L51	L66	L98	L81	W104	2 - 5
102. W. Burkitt	L75	L87	L47	W77	L78	D86	L80	1½-5½
103. S. Blackman	BYE	L13	L75	L48	L47	L77	D108	1½-5½
104. R. Berend	L45	L56	L85	L76	L64	W108	L101	1 - 6
105. T. Flannery	L53	L39	L78	L100	L77	BYE	L96	1 - 6
106. T. Morris	L33	L59	L70	W108	L99	L97	L100	1 - 6
107. D. Rail	L27	L66	L65	BYE	L93	-	-	1 - 6
108. J. Fosaaen	L25	L84	L60	L106	L67	L104	D103	1 - 6
109. T. O'Connell	D28	L42	L63	L62	L65	-	-	½-6½

HENIN SOUTHERN CALIFORNIA OPEN CHAMPION

Charles Henin won the Open Section of the Southern California Championship held at the Atlas Club September 30 - October 1-2, by the score of 5-1. Henin won \$200 and headed the list of qualifiers to the State Championship to be held in San Francisco, December 30. The other qualifiers are Patrick Eberlein, Robion Kirby and either Jerry Hanken or Gregory Gean. .

The tournament was held in five sections and had the amazing total of 154 contestants. Arthur Spiller was the tournament director.

SOUTHERN CALIFORNIA CHAMPIONSHIP, OPEN CLASS

	1	2	3	4	5	6	Score
1. C. Henin	W16	W5	W18	W3	D2	D4	5 - 1
2. P. Eberlein	D10	W10	W8	W18	D1	W11	4½-1½
3. R. Kirby	W12	W11	W4	L1	D7	W6	4½-1½
4. G. Gean	W20	W17	L3	D7	W10	D1	4 - 2
5. J. Hanken	W14	L1	L7	W17	W15	W13	4 - 2
6. I. Lyon	W21	D12	W9	W19	W13	L3	3½-2½
7. W. Maillard	D15	D10	W5	D4	D3	D8	3½-2½
8. S. Yarmak	D19	D15	D2	D12	W18*	D7	3½-2½
9. F. Alonzo	L17	D14	L6	W20	W19	D10	3 - 3
10. C. Batchelder	D2	D7	W17	D11	L4	D9	3 - 3
11. I. Rivise	W13	L3	D15	D10	W12	L2	3 - 3
12. J. Mego	L3	D6	W16	D8	L11	D14	2½-3½
13. S. Rains	L11	D16	W20*	W15	L6	L5	2½-3½
14. S. Salter	L5	D9	L19	D16	W17*	D12	2½-3½
15. W. Stewart	D7	D8	D11	L13	L5	W16	2½-3½
16. R. Gish	L1	D13	L12	D14	W20	L15	2 - 4
17. A. Troy	W9	L4	L10	L5	L14*	W19	2 - 4
18. T. O'Connell	BYE	W20	L1	L2	L8*	-	2 - 4
19. N. Kurtz	D8	L2	W14	L6	L9	L17	1½-4½
20. H. Rader	L4	L18	L13*	L9	L16	BYE	1 - 5
21. A. Saidy	W6	-	-	-	-	-	1 - 5

Statement of Ownership: THE CALIFORNIA CHESS REPORTER

Published.....6 times yearly. At...San Francisco, California
 Entered as second-class matter at San Francisco, California.
 Publisher.....Calif. State Chess Federation, 244 Kearny St., S.F.
 Editor.....W.G.McClain, 244 Kearny Street, San Francisco
 Business Manager...Ralph Hultgren, 244 Kearny Street, San Francisco
 Owned Entirely By..California State Chess Federation, 244 Kearny Street
 San Francisco. (Ownership equally divided among all members of the
 Federation).

SOUTHERN CALIFORNIA CHAMPIONSHIP CLASS A

	1	2	3	4	5	6	Score
1. S. Hohensee	W11	W24	W9	W18	W5	L2	5 - 1
2. G. Hunnex	L18	W23	W25	W21	W16	W1	5 - 1
3. J. Tarjan	W16	D8	W10	W6	D4	W7	5 - 1
4. D. Cotten	L17	W19	W26	W24	D3	W12	4½-1½
5. K. Stani	W22	W17	D6	W12	L1	W11	4½-1½
6. A. Rich	W19	W27*	D5	L3	D15	W18	4 - 2
7. E. Jaaska	L8	BYE	W21	W17	W9	L3	4 - 2
8. N. Hultgren	W7	D3	W18	L11	W23	D14	4 - 2
9. D. Anderson	W23	W15	L1	W25	L7	D13	3½-2½
10. W. Bragg	D29	D21	L3	D23	W25	W15	3½-2½
11. G. Herlick	L1	W25	D16	W8	W20	L5	3½-2½
12. M. Kerllenevich	D14	W29	W13	L5	W18	L4	3½-2½
13. M. Rubin	D21	W14	L21	D16	W17	D9	3½-2½
14. G. Contos	D12	L13	W29	L15	W24	D8	3 - 3
15. B. Hernandez	W26	L9	D24	W14	D6	L10	3 - 3
16. J. Levin	L3	W28	D11	D13	L2	W20	3 - 3
17. R. Neustaedter	W4	L5	W20	L7	L13	W22	3 - 3
18. S. Skrypzak	W2	W20	L8	L1	L12	L6	2 - 4
19. S. Blanchard	L6	L4	L28	W29	W21	-	2 - 4
20. F. Gamboa	W28	L18	L17	W26*	L11	L16	2 - 4
21. K. Hense	D13	D10	L7	L2	L19	W23	2 - 4
22. H. Rogosin	L5	L26	L23	BYE	W28	L17	2 - 4
23. R. Klein	L9	L2	W22	D10	L8	L21	1½-4½
24. E. Villasenor	W25	L1	D15	L4	L14	-	1½-4½
25. D. Fitzgerald	L24	L11	L2	L9	L10	W28*	1 - 5
26. A. Gates	L15	W22	L4	L20*	-	-	1 - 5
27. Keo	BYE	L6*	-	-	-	-	1 - 5
28. Maeger	L20	L16	W19	-	L22	L25*	1 - 5
29. Bershad	D10	L12	L14	L19	-	-	½ - 5½

SOUTHERN CALIFORNIA CHAMPIONSHIP - CLASS B

	1	2	3	4	5	6	Score
1. M. Thomason	W36	W16	W4	W23	D5	W3	5½-½
2. C. Whitman	W17	W30	W28	W31	D13	W5	5½-½
3. W. Lither	D20	W21	W11	W8	W6	L1	4½-1½
4. Menkes	W35	W7	L1	W32	W14	D8	4½-1½
5. P. Mitchell	W24	W15	W22	W13	D1	L2	4½-1½
6. W. Wislon	L16	W36	W10	W26	L3	W14	4 - 2
7. M. Brown	W18	L4	W33	L11	W17	W13	4 - 2
8. Bernstein	W27	W26	D13	L3	W35	D4	4 - 2
9. E. Gaylor	L38	W24	W20	L14	W18	W15	4 - 2
10. T. Beckman	L26	W27	L6	W34	W11	W22	4 - 2
11. V. Fagin	D19	W25	L3	W7	L10	W23	3½-2½
12. G. Olsson	L34	D37	W25	D15	D27	W21	3½-2½

Southern California Championship - Class B (continued)

	1	2	3	4	5	6	Score
13. H. Cillers	W29	W34	D8	L5	D2	L7	3 - 3
14. A. Gojich	L15	W18	W34	W9	L4	L6	3 - 3
15. R. Gardner	W14	L5	D35	D12	W26*	L9	3 - 3
16. R. Kotz	W6	L1	L32	W30	D34	D19	3 - 3
17. Fk. Frilling	L2	L31	W24	W29	L7	W26	3 - 3
18. B. Collins	L7	L14	W37	W33	L9	W29	3 - 3
19. J. Batchelder	D11	L35	D21	D37	W20	D16	3 - 3
20. V. Neumann	D3	D23	L9	D21	L19	W27	2½-3½
21. M. Schlosser	D23	L3	D19	D20	W25	L12	2½-3½
22. Fd. Frilling	D25	W29	L5	W35	L23	L10	2½-3½
23. H. Shipin	D21	D20	L26	D27	W22	L11	2½-3½
24. E. Fagan	L5	L9	L17	D36	BYE	W34	2½-3½
25. G. Fennell	D22	L11	L12	BYE	L21	W36	2½-3½
26. R. Weinhold	W10	L8	W23	L6	L15*	L17	2 - 4
27. M. Carroll	W8	L10	W36	D23	D12	L20	2 - 4
28. E. Hildreth	W31	W32	L2	L1	-	-	2 - 4
29. V. Saporito	L13	L22	BYE	L17	W30	L18	2 - 4
30. A. Smith	W37	L2	L31	L16	L29	BYE	2 - 4
31. R. Cortes	L28	W17	W30	L2	-	-	2 - 4
32. A. Hatch	W33	L23	W16	L4	-	-	2 - 4
33. K. Smith	L32	BYE	L7	L18	L36	W35*	2 - 4
34. R. Clark	W12	L13	L14	L10	D16	L24	1½-4½
35. Oje	L4	W19	D15	L22	L8	L33*	1½-4½
36. D. Sanchez	L1	L6	L27	D24	W33	L25	1½-4½
37. G. Wren	L30	D12	L18	D19	-	-	1 - 5
38. L. Hoke	W9	-	-	-	-	-	1 - 5

SOUTHERN CALIFORNIA CHAMPIONSHIP - CLASS C

	1	2	3	4	5	6	Score
1. R. Taylor	W17	W15	W18	W8	W7	D3	5½- ½
2. R. Henderson	W16	L8	W14	W11	W3	W4	5 - 1
3. P. Culotta	W12	W4	W8	W5	L2	D1	4½-1½
4. H. Vogt	W18	L3	W12	W6	W8	L2	4 - 2
5. W. Savoie	W7	L1	W20	L3	W15	W9	4 - 2
6. A. Rackett	W9	D10	W16	L4	W14	D7	4 - 2
7. Dr. A. Hendy	L5	W19	W9	W10	L1	D6	3½-2½
8. Dr. Terry	W20	W2	L3	L1	L4	W15	3 - 3
9. R. Mills	L6	W15	L7	W4	W10	L5	3 - 3
10. P. Jarmuz	W19	D1	W17	L7	L9	D11	3 - 3
11. Sefton	W15	L14	W13	L2	D16	D10	3 - 3
12. R. Armstrong	L3	W17	L4	L18	W19	W14*	3 - 3
13. T. Twaiten	L14	W20	L11	L15	D17	W19	2½-3½
14. C. Judd	W13	W11	L2	L9	L6	L12	2 - 4

Southern California Championship - Class C (Continued)

	1	2	3	4	5	6	Score
15. C. Fotias	L11	L9	W19	W13	L5	L8	2 - 4
16. R. Bordier	L2	D18	L6	W20	D11	L17	2 - 4
17. J. Nanassy	L1	L12	L10	L19	D13	W16	1½-4½
18. F. Nally	L4	D16	L1	W20	-	-	1½-4½
19. H. Gandara	L10	L7	L15	W18	L12	L13	1 - 5
20. J. Dix	L8	L13	L5	L16	-	-	0 - 6

SOUTHERN CALIFORNIA CHAMPIONSHIP - CLASS D AND UNRATED

	1	2	3	4	5	6	Score
1. J. Kolkey	W27	W16	W12	W23	W4	D5	5½-1½
2. J. Davidson	L10	W13	W42	W28	W24	W8	5 - 1
3. R. Lindgren	W17	W22	W28	L4	W12	W10	5 - 1
4. R. Clark	W34	W20*	W33	W3	L1	W9	5 - 1
5. G. Simons	W13	W21	W35	D24	W17	D1	5 - 1
6. D. Martin	D35	W44	W39	L17	W26	W19	4½-1½
7. C. Monoz	L24	W25	W29	L11	W39	W27	4 - 2
8. J. Tumpek	W39	L24	W40	W16	W22	L2	4 - 2
9. J. Porter	W31	W41	W24	L20	W23*	L4	4 - 2
10. A. Goplen	W2	L12	W37	W39	W11	L3	4 - 2
11. W. Hohensee	W38	W45	L23	W7	L10	W22	4 - 2
12. D. Castle	W36	W10	L1	W46	L3	D16	3½-2½
13. M. Hewett	L5	L2	W32	W40	W29	D14	3½-2½
14. J. Kent	L21	W34	D27	W35	D46	D13	3½-2½
15. R. Kramer	L41	D17	L26	W38	W20	W34	3½-2½
16. W. Neel	W46	L1	W19	L8	W18	D12	3½-2½
17. R. Allen	L3	D15	W30	W6	L5	D46	3 - 3
18. J. Boyle	L23	W32	L22	W43*	L16	W29	3 - 3
19. H. Hyde	L33	W43	L16	W31	W34	L6	3 - 3
20. H. James	W32	L4*	W41	W9	L15	-	3 - 3
21. B. Mueller	W14	L5	L46	L34	W32	W28	3 - 3
22. R. Starczak	W37	L3	W18	W33*	L8	L11	3 - 3
23. H. Young	W18	W29	W11	L1	L9*	-	3 - 3
24. G. Crandall	W7	W8	L9	D5	L2	L25	2½-3½
25. T. Morris	D45	L7	L31	W36	W28	W24	3½-2½
26. L. Nezhnin	D30	L46	W15	L27	L6	W38	2½-3½
27. D. Welsh	L1	W31	D14	W26	-	L7	2½-3½
28. R. Foss	W44	W30	L3	L2	L25	L21	2 - 4
29. R. Kalenborn	W40	L23	L7	W41	L13	L18	2 - 4
30. F. Curren	D26	L28	L17	W44	D37	-	2 - 4
31. P. Rogosin	L9	L27	W25	L19	W36	-	2 - 4
32. F. Say	L20	L18	L13	W37	L21	W39	2 - 4
33. D. Whitcomb	W19	W42	L4	L22*	-	-	2 - 4
34. C. Wilson	L4	L14	W44	W21	L19	L15	2 - 4

Southern California Championship: - Class D & Unrated (Continued)

	1	2	3	4	5	6	Score
35. T. Bazadier	D6	W38	L5	L14	-	-	1½-4½
36. D. Bragg	L12	W40	D39	L25	L31	W44	1½-4½
37. P. Bronson	L22	L39	L10	L32	D30	W40	1½-4½
38. L. Smead	L11	L35	D36	L15	W40	L26	1½-4½
39. S. Stewart	L8	W37	L6	L10	L7	L32	1 - 5
40. G. Smith	L29	W36	L8	L13	L38	L37	1 - 5
41. R. Richardson	W15	L9	L20	L29	-	-	1 - 5
42. J. Monarch	W43	L33	L2	-	-	-	1 - 5
43. V. Brigham	L42	L19	BYE	L18*	-	-	1 - 5
44. G. Kopoulos	L28	L6	L34	L30	-	L36	0 - 6
45. W. Burkitt	D25	L11	-	-	-	-	½-5½
46. K. Commons	L16	W26	W21	L12	D14	D17	3 - 3

SCHUTT WINS CENTRAL CALIFORNIA QUALIFIER

Raymond Schutt of San Jose won the Central California Open, held at the Lockheed Employees Recreational Association Auditorium in October and became the Central California representative in the State Championship finals. Schutt's 5-0 score was also worth \$100.

Eric Osbun won the second prize of \$50. The third prize of \$20 was divided between Ziad Baroudi, Warren Stenberg, John Blackstone and Robert Shean. Other prizes: Class A, Robert Henry; Class B Dr. Ben Gross; Class C, David Amkraut and Saul Silven; Junior, David Blohm; and Upset, Rick Shepard. The Reporter's best-played-game prize was not applied for. The event was directed by Koit V. Tullis.

CENTRAL CALIFORNIA OPEN, SUNNYVALE, OCTOBER 28-29-30, 1966.

	1	2	3	4	5	Score
1. R. Schutt	W36	W13	W23	W5	W3	5 - 0
2. E. Osbun	W46	W40	D9	W12	W23	4½-½
3. Z. Baroudi	W47	W26	W29	W6	L1	4 - 1
4. W. Stenberg	L30	W27	W28	W25	W24	4 - 1
5. J. Blackstone	W28	W14	W38	L1	W29	4 - 1
6. R. Shean	W34	W32	W16	L3	W19	4 - 1
7. R. Henry	BYE	D17	W35	D8	W20	4 - 1
8. D. Blohm	W42	D37	W53	D7	W9	4 - 1
9. J. Hurt	W54	W33	D2	W10	L8	3½-1½
10. F. Thornally	D17	W18	W31	L9	W34	3½-1½
11. E. Syrett	W43	D31	W52	D14	D13	3½-1½
12. R. Wolf	W55	W41	D37	L2	W30	3½-1½
13. R. Mitchell	W57	L1	W43	W16	D12	3½-1½

Central California Open, Sunnyvale -(Continued)

	1	2	3	4	5	Score
14. R. Baker	W51	L5	W56	D11	W33	3½-1½
15. Dr. B. Gross	L56	W64	D33	W53	W41	3½-1½
16. D. Amkraut	W24	W19	L6	L13	W37	3 - 2
17. M. Goodall	D10	D7	W41	L24	W46	3 - 2
18. S. Silven	D21	L10	W47	W35	D26	3 - 2
19. J. McIlrath	W48	L16	W45	W22	L6	3 - 2
20. J. Iwashita	W45	L38	W36	W40	L7	3 - 2
21. F. Harris	D18	W60	L22	D27	W42	3 - 2
22. J. Mathis	L32	W57	W21	L19	W39	3 - 2
23. D. Peizer	W61	W30	L1	W38	L2	3 - 2
24. C. Wilson	L16	W54	W59	W17	L4	3 - 2
25. J. Fredgren	L31	W55	W50	L4	W43	3 - 2
26. A. McKenzie	W63	L3	D30	W48	D18	3 - 2
27. F. Olvera	D50	L4	W51	D21	W38	3 - 2
28. G. Bromley	L5	W62	L4	W50	W40	3 - 2
29. A. DiMilo	W62	W56	L3	W37	L5	3 - 2
30. R. Shepard	W4	L23	D26	W32	L12	2½-2½
31. P. Grey	W25	D11	L10	L33	W52	2½-2½
32. C. Schroth	W22	L6	D48	L30	W53	2½-2½
33. A. Vancura	W49	L9	D15	W31	L14	2½-2½
34. W. Montfort	L6	D51	W58	W52	L10	2½-2½
35. N. Babbitt	W64	D53	L7	L18	W61	2½-2½
36. W. Jachens	L1	W63	L20	W58	D48	2½-2½
37. G. Oakes	W39	D8	D12	L29	L16	2 - 3
38. M. Gazse	W59	W20	L5	L23	L27	2 - 3
39. A. La Vergne	W37	L43	W54	L45	L22	2 - 3
40. E. Phillips	W58	L2	W44	L20	L28	2 - 3
41. R. Oyler	W44*	L12	L17	W59	L15	2 - 3
42. P. Hubbard	L8	L59	W61	W49	L21	2 - 3
43. D. Olmsted	L11	W39	L13	W60	L25	2 - 3
44. J. Bush	L41*	W49	L40	L46	W60	2 - 3
45. G. Manhart	W20	W61	L19	L39	W59	2 - 3
46. D. Liebermann	L2	L48*	W63	W44	L17	2 - 3
47. L. Marjay	L3	L58	L18	W62	W61	2 - 3
48. N. Wild	L19	W46*	D32	L26	D36	2 - 3
49. D. Burgess	L33	L44	W64	L42	W58	2 - 3
50. M. Rivera	D27	D52	L25	L28	D57	1½-3½
51. H. Maeger	L14	D34	L27	W55	L35	1½-3½
52. T. Koczynski	W60	D50	L11	L34	L31	1½-3½
53. H. Glidden	W65	D35	L8	L15	L32	1½-3½
54. M. Sanders	L9	L24	L39	D57	W62	1½-3½
55. H. Glading	L12	L25	D62	L51	W63	1½-3½
56. J. Cornwell	W15	L29	L14	-	-	1 - 4

Central California Open, Sunnyvale - (Continued)

	1	2	3	4	5	Score
57. D. Harris	L13	L22	L60	D54	D50	1 - 4
58. J. Hauser	L40	W47	L34	L36	L49	1 - 4
59. W. Alexander	L38	W42	L24	L41	L45	1 - 4
60. R. Uomini	L52	L21	W57	L43	L44	1 - 4
61. T. Cathey	L23	L45	L42	W63	L47	1 - 4
62. R. Yaranon	L29	L28	D55	L47	L54	$\frac{1}{2}$ -4 $\frac{1}{2}$
63. H. Mager Jr.	L26	L36	L46	L61	L55	0 - 5
64. D. Thompson	L35	L15	L49	-	-	0 - 5
65. M. Sullivan	L53	-	-	-	-	0 - 5

MENAS NORTHERN CALIFORNIA CHAMPION

Borel Menas won the Northern California Championship, held at the Mechanics' Institute in October and became the first finalist from San Francisco in the State Championship finals. His $4\frac{1}{2}$ - $\frac{1}{2}$ score also was worth \$100.

Four players tied for second: John Blackstone, Carroll Capps, David Blohm and Arthur Wang. Second prize was \$60 and third was \$30. There also were class prizes. The total prize fund was \$400. In addition, the Reporter's best-played game prize of \$10 was awarded to Menas and Wang. The event was directed by Chuck Savery.

NORTHERN CALIFORNIA CHAMPIONSHIP, SAN FRANCISCO, OCTOBER 1-2, 1966

	1	2	3	4	5	Score
1. B. Menas	W23	W14	W6	W2	D5	$4\frac{1}{2}$ - $\frac{1}{2}$
2. J. Blackstone	W29	W20	W4	L1	W15	4 - 1
3. C. Capps	L8	W32	W19	W14	W7	4 - 1
4. D. Blohm	W19	W30	L2	W20	W11	4 - 1
5. A. Wang	W35	D13	W21	W12	D1	4 - 1
6. S. Markman	W33	W9	L1	D10	W22	$3\frac{1}{2}$ -1 $\frac{1}{2}$
7. R. Schutt	W27	W17	D12	W24	L3	$3\frac{1}{2}$ -1 $\frac{1}{2}$
8. B. Gross	W3	L12	W38	D15	W21	$3\frac{1}{2}$ -1 $\frac{1}{2}$
9. A. T. Lee	W26	L6	D25	W33	W16	$3\frac{1}{2}$ -1 $\frac{1}{2}$
10. J. Salna	W41	L11	W23	D6	W24	$3\frac{1}{2}$ -1 $\frac{1}{2}$
11. R. Schultz	W28	W10	D15	D13	L4	3 - 2
12. J. Iwashita	W40	W8	D7	L5	D13	3 - 2
13. R. Creet	W38	D5	D16	D11	D12	3 - 2
14. C. Schroth	W31	L1	W39	L3	W28	3 - 2
15. E. Syrett	W32	W39	D11	D8	L2	3 - 2
16. R. L. Henry	W37	D22	D13	W30	L9	3 - 2
17. H. Rosenbaum	W43	L7	W29	L21	W27	3 - 2

Northern California Championship - (Continued)

	1	2	3	4	5	Score
18. P. Secord	L20	W28	L30	W40	W32	3 - 2
19. P. Grey	L4	BYE	L3	W39	W30	3 - 2
20. R. Cuneo	W18	L2	W40	L4	D26	2½-2½
21. A. DiMilo	D36	W34	L5	W17	L8	2½-2½
22. T. Heimberg	W25	D16	L24	W34	L6	2½-2½
23. R. McCollough	L1	W41	L10	D31	W35	2½-2½
24. M. Morris	D34	W36	W22	L7	L10	2½-2½
25. E. McNally	L22	W37	D9	L26	W34	2½-2½
26. D. Litowsky	L9	D42	W33	W25	D20	2½-2½
27. L. Marjay	L7	L33	W36	W29	L17	2 - 3
28. G. Manhart	L11	L18	W43	W38	L14	2 - 3
29. J. Evans	L2	W43	L17	L27	W38	2 - 3
30. M. Gazse	BYE	L4	W18	L16	L19	2 - 3
31. E. Ipsen	L14	L40	BYE	D23	D36	2 - 3
32. M. Mattingly	L15	L3	W41	D35	L18	1½-3½
33. A. McKenzie	L6	W27	D26	L9		1½-3½
34. D. Olmsted	D24	L21	W42	L22	L25	1½-3½
35. H. Edelstein	L5	L38	W37	D32	L23	1½-3½
36. L. Reuther	D21	L24	L27	D37	D31	1½-3½
37. I. Frank	L16	L25	L35	D36	W41*	1½-3½
38. R. Fifer	L13	W35	L8	L28	L29	1 - 4
39. E. Krough	W42	L15	L14	L19	-	1 - 4
40. J. Mathis	L12	W31	L20	L18	-	1 - 4
41. R. Harper	L10	L23	L32	BYE	L37*	1 - 4
42. M. Goodall	L39	D26	L34	-	-	½-4½
43. D. Bennett	L17	L29	L28	-	-	0 - 5

HOHENSEE, COTTEN, STANI - SO. CALIF. AMATEUR CO CHAMPIONS

Steven Hohensee, Don Cotten and Karl Stani tied for first place in the annual Southern California Amateur Open, held at Santa Monica in October. There were 73 contestants, who were required to have USCF ratings of less than 2,000 points. Grandmaster Isaac Kashdan was the tournament director.

SOUTHERN CALIFORNIA AMATEUR, SANTA MONICA 1966

	1	2	3	4	5	6	Score
1. S. Hohensee	W26	W7	W38	D22	W13	W9	5½-½
2. D. Cotten	W25	W29	D11	W52	W22	W6	5½-½
3. K. Stani	W20	W31	W52	W15	D16	W10	5½-½
4. S. Rubin	L32	W71*	W55	W29	W28	W18	5 - 1
5. A. Kempner	L9	W51	W58	W53	W32	W19	5 - 1
6. J. Myers	W35	W23	W14	W30	D3	L2	4½-1½
7. T. Beckman	W43	L1	D59	W27	W45	W21	4½-1½

	1	2	3	4	5	6	Score
8. R. De Laura	W73	W13	D45	L11	W39	W22	4½-1½
9. V. Tokareff	W5	D44	W12	W45	W11	L1	4½-1½
10. B. Pollard	W33	W53	L22	W14	W30	L3	4 - 2
11. K. Hense	W42	W50	D2	W8	L9	D15	4 - 2
12. C. Rasis	D46	W24	L9	D16	W54*	W31	4 - 2
13. N. Kurtz	W69	L8	W66	W17	L1	W32	4 - 2
14. E. Scher	W61	W48	L6	L10	W34	W33	4 - 2
15. H. Keesey	W65	W47	D37	L3	W44*	D11	4 - 2
16. H. Cillers	D39	L19	W69	D12	W35	W28	4 - 2
17. F. Cohen	L30	W33	W26	L13	W53*	W29	4 - 2
18. J. Scheib	D24	W39	W44	D37	W36	L4	4 - 2
19. R. Starczak	L45	W16	W34	W20	W37	L5	4 - 2
20. H. Singleton	L3	W61	W54	L19	D25	W41	3½-2½
21. R. O'Bryan	L66	W70	W49	W46	D26	L7	3½-2½
22. H. Rogosin	W27	W49*	W10	D1	L2	L8	3½-2½
23. F. Brock	W57	L6	D43	L44	W58	W30	3½-2½
24. S. Vigneau	D18	L12	L27	W64	W42	W38	3½-2½
25. W. Blackmore	L2	W64	W42	L28	D20	W43	3½-2½
26. H. Vogt	L1	W57	L17	W50	D21	W51	3½-2½
27. Dr. B. Kohn	L22	D56	W24	L7	W47	W39	3½-2½
28. E. Stearns	W67	W32	L30	W25	L4	L16	3 - 3
29. M. Thomson	W70	L2	W63	L4	W55	L17	3 - 3
30. C. Whitman	W17	W46	W28	L6	L10	L28	3 - 3
31. Dr. M. Kaner	W60	L3	W48	L36	W57	L12	3 - 3
32. J. Nanassy	W4	L28	W65	W38	L5	L13	3 - 3
33. R. Engler	L10	L17	W70	W49	W52*	L14	3 - 3
34. W. Singleton	L50	W60	L19	W47	L14	W48	3 - 3
35. A. Schultz	L6	W72*	L39	W63	L16	W50	3 - 3
36. G. Hunnex	L55	W69	W50	W31	L18	-	3 - 3
37. L. Harter	W68	W54	D15	D18	L19	-	3 - 3
38. R. Pease	W51	W55	L1	L32	D41	L24	2½-3½
39. S. Salter	D16	L18	W35	W43	L8	L27	2½-3½
40. M. Methven	L59	L42*	W51	D42	L46	W57	2½-3½
41. J. Jiron	L47	L65	W62	W60	D38	L20	2½-3½
42. J. Marquez	L11	W40*	L25	D40	L24	W56	2½-3½
43. G. Wood	L7	W62	D23	L39	W56	L25	2½-3½
44. G. Gean	W71	D9	L18	W23	L15*	-	2½-3½
45. T. Bullockus	W19	W66	D8	L9	L7	-	2½-3½
46. J. Yunker	D12	L30	W56	L21	W40	-	2½-3½
47. A. Russo	W41	L15	L53	L34	L27	W61	2 - 4
48. C. Gomez	W63	L14	L31	L54	W62	L34	2 - 4
49. R. Melniker	W56	L22*	L21	L33	L51	W60	2 - 4
50. E. Townsend	W34	L11	L36	L26	W60	L35	2 - 4
51. W. Vittum	L38	L5	L40	W68	W49	L26	2 - 4
52. W. McGruder	W64	W59	L3	L2	L33	-	2 - 4

	1	2	3	4	5	6	Score
53. L. Rudin	W58	L10	W47	L5	W17*	-	2 - 4
54. R. Weinhold	W72	L37	L20	W48	L12*	-	2 - 4
55. G. Miller	W36	L38	L4	W69	L29	-	2 - 4
56. V. Fagin	L49	D27	L46	W61	L43	L42	1½-4½
57. A. Patsch	L23	L26	W68	D58	L31	L40	1½-4½
58. A. Skogen	L53	W68	L5	D57	L23	-	1½-4½
59. E. Jaaska	W40	L52	D7	-	-	-	1½-4½
60. S. Blowers	L31	L34	W67	L41	L50	L49	1 - 5
61. G. Bottlik	L14	L20	L64	L56	W67*	L47	1 - 5
62. E. Robinson	-	L43	L41	W67	L48	-	1 - 5
63. L. Belletini	L48	W67	L29	L35	-	-	1 - 5
64. A. Epstein	L52	L25	W61	L24	-	-	1 - 5
65. P. Benitez	L15	W41	L32	-	-	-	1 - 5
66. A. Bisno	W21	L45	L13	-	-	-	1 - 5
67. G. Tuttle	L28	L63	L60	L62	L61*	-	0 - 6
68. L. Beavers	L37	L58	L57	L51	-	-	0 - 6
69. W. Hunt	L13	L36	L16	L55	-	-	0 - 6
70. P. Razien	L29	L21	L33	-	-	-	0 - 6
71. P. Cassidy	L44	L4*	-	-	-	-	0 - 6
72. F. Gerlach	L54	L35*	-	-	-	-	0 - 6
73. S. Sawyer	L8	-	-	-	-	-	0 - 6

SAIDI - BERNARD OAK OPEN CHAMPION

Touradj Saidi of Long Beach won the annual Bernard Oak Memorial Open completed in October with a perfect score of 6 - 0. Saidi won the \$120 first prize and had his name engraved on the perpetual trophy.

BERNARD OAK MEMORIAL OPEN, CITY TERRACE 1966

	1	2	3	4	5	6	Score
1. T. Saidi	W10	W7	W5	W3	W9	W6	6 - 0
2. N. Hultgren	W18	D8	W3	W13	W7	W4	4½-1½
3. H. Keesey	W24	W15	W2	L1	L4	W14	4 - 2
4. R. Klein	W23	L11	W10	W12	W3	L2	4 - 2
5. G. Thomas	W16	W9	L1	L8	W15	W12*	4 - 2
6. R. Gish	W21	W19	W11	L7	W8	L1	4 - 2
7. C. Whitman	W20	L1	W16	W6	L2	D9	3½-2½
8. G. Barrett	D13	D2	W15	W5	L6	D10	3½-2½
9. J. Hanken	W14	L5	W22	W11	L1	D7	3½-2½
10. R. Henderson	L1	W23	L4	W18	W11*	D8	3½-2½
11. J. Whitcomb	W22	W4	L6	L9	L10*	-	3½-2½
12. Goplin	L15	W14	W19	L4	W20*	L5*	3 - 3

	1	2	3	4	5	6	Score
13. R. Dix	D8	D21	D20	L2	BYE	D15	3 - 3
14. W. Ferrar	L9	L12	W17	W16	W21	L3	3 - 3
15. S. Glassberg	W12	L3	L8	W19	L5	D13	2½-3½
16. Curren	L5	W18	L7	L14	D22	W17	2½-3½
17. Patsch	L19	L20	L14	W24*	W23*	L16	2½-3½
18. Eaton	L1	L16	W24*	L10	D19	W22	2½-3½
19. H. Rader	W17	L6	L12	L15	D18	BYE	2½-3½
20. R. Cortes	L7	W17	D13	W21	L12*	-	2½-3½
21. W. McGrann	L6	D13	W23	L20	L14	-	1½-4½
22. R. Cohan	L11	W24	L9	L23	D16	L18	1½-4½
23. P. Mitchell	L4	L10	L21	W22	L17*	-	1 - 5
24. A. Aloni	L3	L22	L18*	L17*	-	-	0 - 6

GAME OF THE MONTH

What do you do when the best-played game submitted for a prize is a draw, its brilliant passages are buried in the footnotes because the players foresee the combinations and avoid them and it is longer than space usually permits? Why, you divide the prize and publish the game anyhow. The following game is between Borel Menas, the winner of the Northern California Championship, and Arthur Wang, who tied for second place.

Northern California Championship 1966

Game No. 949 - English

White	Black
A. Wang	B. Menas
1. P-QB4	Kt-KB3
2. Kt-QB3	P-K4
3. P-KKt3	P-B3
4. Kt-B3	P-K5
5. Kt-Q4	P-Q4
6. PxP	PxP
7. B-Kt2	Kt-B3

Black's aggressive opening shows in no uncertain terms that he means to bring his pieces out early and blow White off the board, if possible.

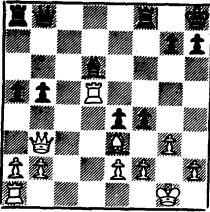
8. KtxKt	PxKt
9. O-O	B-O3
10. P-Q3	

White's quiet moves, just as determined as Black's but in a different way, give notice that a fight is in the offing.

10. ...	PxP
11. QxP	P-QR4
12. B-K3	O-O
13. Kt-R4	B-R3
14. Q-Q2	Kt-K5
15. Q-B2	B-Kt4
16. BxKt	...

White has made up his mind; weaken the advanced Black pawns and go after them.

16. ...	PxB
17. Kt-B3	P-KB4
18. KtxB	PxKt
19. Q-Kt3ch	K-R1
20. KR-Q1	Q-Kt1
21. R-Q5	P-B5

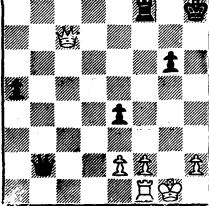


22. PxP ...
 White did not care for RxP, PxB;
 23. RxQ, PxPch etc., when Black's
 advanced pawn would be compen-
 sation for the loss of Q for
 R and B.

22. ... BxP
 23. BxB QxB
 24. Q-Kt3 Q-KB2
 White with sounder pawns can
 trade Queens, while Black can't.
 The interesting question is: Can
 Black stand losing a pawn? Black
 simply must believe that he can.

25. RxP R-R3
 26. R-Kt5 R-KB3
 27. R-KB1 QxP
 28. RxKtP QxP
 Black has his pawn back but his
 three pawns are isolated.

29. Q-B7 R-Kt3ch
 30. RxR PxR



31. QxP QxP

Now both sides are down to two pawns
 and Black's pawns are still hard
 to defend. The theme is still the
 same - White seeks to trade down
 and work out on the Black pawns,
 Black continues to counter-attack.

32. Q-K5ch K-Kt1
 33. Q-Kt3 Q-R4
 34. R-B1 Q-KB4
 35. R-B7 R-B2
 36. R-B6 K-Kt2
 37. Q-B3ch K-R2
 38. Q-KKt3 R-Q2
 39. Q-R4ch K-Kt2
 40. Q-Kt3 R-KB2
 41. R-B3 Q-B5
 42. K-Kt2 QxQ
 43. KxQ K-B3
 44. R-B5 K-K3
 45. R-B6ch K-B4
 46. P-R4 R-KR2
 47. R-B8 R-KB2
 48. R-B5ch K-K3
 49. R-B6ch K-B4
 50. R-R6 R-KR2
 51. R-R5ch K-B3
 52. K-Kt4 R-KB2
 53. R-R6ch K-K2
 54. R-R2 R-B3
 55. R-K2 K-B2

DRAWN

This game decided first place,
 as Menas finished half a point
 ahead of Wang and three others
 (meanwhile Capps was helping out
 by defeating Schutt, who went into
 the last round with a chance to
 tie for first).

THE MIGHTY KING'S BISHOP - by Fritz Leiber

In his Manual of Chess Emanuel Lasker gives the King's Bishop a value of 5 and the Queen's Bishop a value of $4\frac{1}{2}$. He intended these primarily as values in the opening*, but I believe - and Lasker may well have too, for he nowhere denies it - that the same values hold throughout the game, that in the great majority of positions the King's Bishop is slightly superior to the Queen's Bishop.

1. The value of a Bishop depends more on pawn structure than that of any other piece - the "bad" bishop blocked by its own pawns, the bishop locked-in by enemy pawns, and so forth - and pawn structure, good or bad, is something that generally lasts the whole game. Apparently, the King's Bishop is superior because it is closer to the King both in the original position and after King's side fianchetto and castling, and because it attacks the enemy's two notorious weak points: KB2 and QKt2. The Queen's Bishop, on the other hand, is often fated to passivity because it is needed as a defender by the weak Queen's Knight's Pawn and because it is often locked in by P-K3, not only in queen-side openings but in the French Defense.

2. An empirical check is helpful. Best would be a study of thousands of master games. I studied in Fine's Basic Chess Endings the section "Bishops of the Same Color," which of course always means King's Bishop against Queen's Bishop. These positions are almost always taken from actual master games - and a King's Bishop stays a King's Bishop even when the colors are reversed to suit the author's instructional system. I tabulated only the illustrated positions. The King's Bishop won 14 times; the Queen's Bishop nine times.

* This is clear from his full list of values: Q=11; KR=7; QR=6; KB=5; QB= $4\frac{1}{2}$; Kt= $4\frac{1}{2}$; KP or QP=2; BP= $1\frac{1}{2}$; KtP= $5/4$; RP= $\frac{1}{2}$. Clearly he rates the KR a point higher than the QR because it can, by castling, get into the central battle more quickly; this superior value disappears in the end - or even middle-game. Also, he gives the Rook's Pawn such a low value because its disappearance in the opening frees the Rook to operate on its original file. But the difference in value between the KB and QB seems more likely to hold throughout the game; for one thing, $9\frac{1}{2}$ against 9 seems to express the superiority of two Bishops to two Knights more accurately than the commoner $7 = 6$.

3. Consider the number of openings in which the King's Bishop is the spearhead of White's attack: The Giuoco Piano and Evans Gambit; the Ruy; the Bishop's Opening; B-Q3 against the French and in the Colle and Stonewall and in the Orthodox and many other versions of the Queen's Gambit; or fianchettoed in the Catalan, Reti, and other systems. Especially in early mating attacks, the King's Bishop is apt to be the killer. Consider also the fewer, less reliable, seldom-used attacks depending on the Queen's Bishop; the Orangoutang, Nimzowitch's attack, the risky move QB-B4 against the King's Indian defense.

Perhaps even more to the point, think of how often Black's King's Bishop is the mainstay of his defense: a powerhouse when fianchettoed in the King's Indian, the Dragon Variation of the Sicilian, or in the Gruenfeld; a versatile defender at K2; and a lasting menace to White when safely developed at QB4 - it is this last point, to my mind, which has through decades of changing theory made the Classical Defense the best of the minor defenses to the Ruy Lopez. Incidentally, in all the above openings and variations, the player is trying to get scope for his King's Bishop by playing his pawns to squares of the opposite color - which automatically tends to make his Queen's Bishop a "bad" bishop.

A critic of my ideas points out, "We don't feel you can stick in any arbitrary figures. White's Queen Bishop is more valuable against the Dragon (Sicilian) and probably so against similar King's Indian and Pirc Defenses." But this is clearly because Black's fianchettoed King Bishop is supremely strong in those openings. The critic adds, "Values change drastically even in the same game as pawn structures do vary, if only from being broken up." True, to a degree, yet pawn structure remains the most enduring element of a position; while the most frequent consequence of the break-up of a bad pawn structure is loss of the game.

To illustrate some points about the powers of the King's Bishop I turn to some of my own games because I understand them best. Two were against high-ranking masters - in simultaneous exhibitions, I hasten to say, and even at that I lost one of them!

The first game, from the 1964 Southern California Amateur Championship, is an example of the battle between the Black Bishops for the control of Black's diagonal KR1 - QR8 when Black plays the King's Indian.

King's Indian Defense

White	Black
M. Carr	F. Leiber
1. P-QB4	Kt-KB3
2. Kt-QB3	P-KKt3
3. P-Q4	B-Kt2
4. P-K4	O-O
5. P-B3	P-Q3
6. B-K3	QKt-Q2
7. Q-Q2	P-B4
8. KKt-K2	Kt-Kt3

Here Modern Chess Openings (9th ed) suggests instead: 8...P-QR3; 9.PxP, PxP; 10.Kt-B1,Q-B2; 11.Kt-Kt3,P-Kt3 with equality, but my move temporarily thwarts the exchange of pawns.

9. Kt-Kt3	PxP
10. BxP	...
The Battle of Bishops begins.	
10. ...	B-K3
11. Kt-Q5	BxKt
12. BxB	P-K3
13. PxP	PxP
14. B-Q3	P-Q4
15. B-B5	...

White interrupts the Battle to attack a Rook. Better to block the key diagonal with P-K5, P-B4, drawing the Battle as it were, though this gives Black the better pawn structure.

15. ...	R-B2
16. Q-Kt4	KtB3-Q2
17. B-Q4	...
The Battle is on again.	
17. ...	Kt-K4
18. BxKt	...

White could have kept up the Battle with 18. B-Kt5, which answers 18... Kt-B3. Now his position deteriorates.

18. ...	BxB
19. Kt-K2	R-QB1
20. Kt-B3	Q-B2

A mistake. 20... Kt-B5 was the move.

21. Kt-Kt5	Q-Kt1
22. P-KR3	Kt-B5
23. BxKt	RxB
24. Q-Kt3	Q-KB1
25. P-R3	Q-B4
26. R-Q1	P-QR3
27. Kt-B3	Q-K6ch
28. K-B1	B-Kt6
29. Q-B2	PxP
30. Q-K2	Q-B4
31. R-Q8ch	K-Kt2
32. KtxP	RxKt
Resigns.	

The next two games illustrate the power of the Black King's Bishop at QB4. This first is from a simultaneous exhibition given by Larry Evans at the Santa Monica Bay Chess Club in 1960.

Giuoco Piano

White	Black
L. Evans	F. Leiber
1. P-K4	P-K4
2. Kt-KB3	Kt-QB3
3. B-B4	B-B4
4. P-QB3	Q-K2
5. O-O	P-Q3
6. P-Q4	B-Kt3
7. B-KKt5	Kt-B3
8. Kt-R3	P-KR3
9. BxKt	QxKt
10. P-Q5	Kt-K2
11. B-K2	B-Q2?

Black, elated at having "forced" his illustrious opponent to "retreat" a piece, makes what he thinks is a noncommittal developing move. He should have played 11...P-QR3, providing a retreat square for the precious Bishop.

12. Kt-B4 ...
This ends the career of the mighty King's Bishop. Now Black could have preserved his Queen-side pawn structure by playing 12. ...Kt-B1 but he is too flustered to think of that.

12. ... Kt-Kt3
13. P-QR4 P-QR3
14. KtxB PxB
15. Kt-Q2 ...

He heads at once for the broken-up pawns. Black held out for 35 more moves, but they are not worth recording.

The Black King's Bishop did better in a simultaneous exhibition given by Samuel Reshevsky at the Santa Monica Bay Chess Club in 1961.

Ruy Lopez

- | | |
|--------------|-----------|
| White | Black |
| S. Reshevsky | F. Leiber |
| 1. P-K4 | P-K4 |
| 2. Kt-KB3 | Kt-QB3 |
| 3. B-Kt5 | B-B4 |
| 4. P-B3 | B-Kt3 |

Charousek's variation. 4. ... Kt-B3 or P-B4 are more usual.

5. P-Q4 PxB
6. PxB QK-K2

Maroczy's move. An interesting wild continuation at this point is 7. Q-Kt3, P-QB3; 8. Kt-K5, P-Q4; 9. PxB, PxB; 10. P-Qb, QxP; 11. KtxP or QxBPch, etc.

7. P-Q5 P-QB3
8. B-QB4 PxB
9. PxB O-Q3

Black's King's Bishop is now the stronger.

10. B-KKt5 P-B3
11. B-Q2 B-Kt5
12. Q-R4ch B-Q2

13. Q-Kt3 Kt-Kt3
14. O-O KKt-K2
15. Kt-B3 O-O
16. PxBK3 Kt-K4
17. B-K2 Kt-B4
18. KtxKt BPxKt
19. K-R2 ...

This move stops Kt-Kt6.
19. ... Q-R5

If 20. P-Kt3, then KtxP; 21. PxBKt QxRP mate.

20. ... Kt-Q5
21. Q-Q1 Q-B5ch
22. K-R1 R-B3
23. B-Kt4 BxB
24. QxB QxQ
25. PxB R-R3ch
26. K-Kt1 R-QB1
Threatens 27. ...RxKt; 28. PxB, Kt-K7 mate.

27. P-KKt3 Kt-B6ch
28. K-Kt2 R-B1
29. R-R1 KtxBch
Resigns

After 30. RxKt, then RxPch; 31. K-Kt1, R-Q7ch; 32. R-K3, BxRch; 33. K-B1, RxR mate.

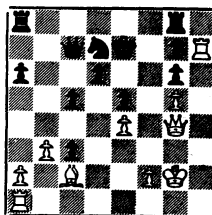
GAMES - CALIFORNIA OPEN 1966

Game No. 950 - Sicilian

- | | |
|-----------|------------|
| White | Black |
| I. Rivise | A. Spiller |
| 1. P-K4 | P-QB4 |
| 2. Kt-KB3 | P-Q3 |
| 3. P-Q4 | PxB |
| 4. KtxP | Kt-KB3 |
| 5. Kt-QB3 | P-QR3 |
| 6. B-K2 | P-K4 |
| 7. Kt-Kt3 | B-K3 |
| 8. O-O | QKt-Q2 |
| 9. B-K3 | B-K2 |
| 10. P-B3 | R-QB |
| 11. P-QR4 | Kt-Kt3 |

- 12. P-R5 Kt-B5
- 13. B-B 0-0
- 14. R-B2 Q-B2
- 15. Kt-Q5 KtxKt
- 16. PxKt B-Q2
- 17. P-B3 P-B4
- 18. Kt-Q2 KtxKt
- 19. BxKt P-B5
- 20. P-QKt4 B-KR5
- 21. R-KB Q-Kt
- 22. P-B4 Q-R2ch
- 23. K-R R-KB3
- 24. B-K B-Kt6
- 25. P-R3 R-Kt3
- 26. B-Q3 R-Kt4
- 27. Q-K2 R-B
- 28. B-KB2 Q-Kt
- 29. P-B5 Q-B
- 30. BxB RxB
- 31. R-B2 PxP
- 32. R-QB Q-Q
- 33. PxP B-Kt4
- 34. BxB PxB
- 35. QxKP QxRP
- 36. P-B6 PxP
- 37. PxP R-Kt3
- 38. Q-Q5ch K-R
- 39. P-B7 Q-R3
- 40. R-R2 Q-B
- 41. R-R8 Resigns

- 12. B-B Kt-Q2
- 13. P-QKt3 QKt-Kt3
- 14. QKt-Q2 P-QB4
- 15. P-KR3 B-R4
- 16. P-KKt4 B-Kt3
- 17. P-Q5 Q-B2
- 18. P-KR4 P-KR4
- 19. Kt-Kt5 BxKt
- 20. PxB PxP
- 21. QxP KtxQP
- 22. Kt-B3 KtxP
- 23. K-Kt2 R-K
- 24. R-R K-B
- 25. Kt-R4 K-K2
- 26. B-Q2 P-Kt5
- 27. KtxBch PxKt
- 28. BxKt PxB
- 29. R-R7 R-KKt



- 30. Q-R3
- On 30. B-Q3, Kt-Kt3 (not Kt-B1 because of 31. B-B4); 31. R-QB1 with positional superiority.
- 30. . . . Kt-B
- 31. R-R4 Kt-K3
- 32. Q-BP Kt-B5ch
- 33. K-B QR-KB
- 34. B-Q3 R-KR
- 35. RxB RxB
- 36. R-Q Q-Q2
- 37. B-K2 R-R6
- 38. P-B3 Q-Kt5
- 39. K-K Q-Kt6ch
- 40. K-Q2 RxBP
- 41. Q-R5 Q-B5ch

- Game No. 951 - Ruy Lopez
- | | |
|-------------|-----------|
| White | Black |
| A. Kanamori | I. Rivise |
| 1. P-K4 | P-K4 |
| 2. Kt-KB3 | Kt-QB3 |
| 3. B-Kt5 | P-QR3 |
| 4. B-R4 | Kt-B3 |
| 5. 0-0 | B-K2 |
| 6. R-K | P-QKt4 |
| 7. B-Kt3 | 0-0 |
| 8. P-B3 | P-Q3 |
| 9. P-Q4 | B-Kt5 |
| 10. B-K3 | Kt-QR4 |
| 11. B-B2 | Kt-B5 |

42. K-B3	R-K6ch	13. B-Kt2	B-Q2
43. B-Q3	Q-Q5ch	14. KR-QB1	0-0
44. K-B2	R-R7ch	15. QR-Kt1	QR-Kt1
45. Resigns		16. Kt-Kt5	P-QKt3
		17. B-B4	QR-B1
		18. R-B3	B-K3
		19. Kt-Q6	R-B2
		20. QR-QB1	B-Q2
		21. KtxP	QR-B1
		22. Kt-Q6	QR-B2
		23. Kt-Kt5	QR-B1
		24. R-Q3	QR-Q1
		25. B-B1	Kt-K4
		26. BxR	KtxR
		27. BxKt	R-K1
		28. PxKt	RxB
		29. R-B1	K-B1
		30. KtxP	K-K1
		31. B-B6	K-Q1
		32. RxBch	RxR
		33. BxR	Resigns

Game No. 952 - Queen's Gambit Dec.

White	Black
A. Lurie	P. Vayssie
1. P-Q4	P-Q4
2. P-QB4	P-K3
3. Kt-QB3	Kt-KB3
4. B-Kt5	P-B3
5. PxP	KPxP
6. Kt-B3	QKt-Q2
7. P-K3	B-K2
8. B-Q3	0-0
9. 0-0	R-K
10. R-B	P-B4
11. B-Kt	PxP
12. QxP	B-B4
13. BxKt	Q-Kt3
14. BxPch	KxB
15. Q-R4ch	K-Kt
16. KtxP	Q-B3
17. RxB	QxR
18. Q-Kt5	Q-B
19. B-K7	RxB
20. KtxRch	Resigns

Game No. 953 - Tarrasch Defense

White	Black
D. Lynn	J. McIlrath
1. P-Q4	P-Q4
2. P-QB4	P-K3
3. Kt-QB3	P-QB4
4. BPxP	KPxP
5. Kt-B3	Kt-QB3
6. P-KKt3	PxP
7. KKtxP	Q-Kt3
8. B-K3	QxP
9. KtxP	B-Kt5ch
10. KtxB	QxKtch
11. Q-Q2	QxQch
12. KxQ	KKt-K2

Northern California Championship

Game No. 954 - Sicilian Defense

White	Black
R. Cuneo	J. Blackstone
1. P-Q4	P-KKt3
2. P-QB4	B-Kt2
3. Kt-QB3	P-Q3
4. P-K4	Kt-Q2
5. B-K2	P-K4
6. P-Q5	Kt-K2
7. Kt-B3	0-0
8. P-KKt4	P-QR4
9. B-K3	Kt-QB4
10. P-KR3	P-B4
11. KtPxP	KtPxP
12. Kt-Q2	Kt-Kt3
13. P-B3	B-R3!
14. Kt-B1	PxP
15. BxB	Q-R5ch
16. K-Q2	QxBch
17. Kt-K3	PxP
18. BxP	Kt-R5

- 19. Q-Kt1ch K-R1
- 20. B-K2 R-KKt1
- 21. Q-B2 R-Kt7
- 22. Q-B7 B-B4
- 23. QR-KB1 R-Kt6
- 24. Kt-Q1 Kt-K5ch!
- 25. K-K1 Kt-Kt7ch
- 26. KtxKt Q-Q7 Mate

- 3. B-Kt5 P-QR3
 - 4. B-R4 Kt-B3
 - 5. O-O B-K2
 - 6. Q-K2 P-QKt4
 - 7. B-Kt3 O-O
 - 8. R-Q1 P-Q3
 - 9. P-KR3 Kt-Q5
 - 10. KtxKt PxB
 - 11. P-KB4 P-B4
 - 12. R-QB4 B-Kt2
 - 13. P-K5 QPXP
 - 14. PxB P-Q6
 - 15. Q-K3 Kt-K5
 - 16. Kt-B3 B-Kt4
 - 17. Q-K1 Q-Q5ch
 - 18. K-R2 B-B5ch
 - 19. K-R1 Kt-B7ch
- Resigns

Game No. 955 - Alekhine's Def.

- | | |
|---------------|--------------|
| White | Black |
| C. Capps | M. Mattingly |
| 1. P-K4 | Kt-KB3 |
| 2. Kt-QB3 | P-Q4 |
| 3. PXP | KtxP |
| 4. B-B4 | Kt-Kt3 |
| 5. B-Kt3 | P-QB4 |
| 6. P-Q3 | B-B4 |
| 7. Q-B3 | Q-B1 |
| 8. KKt-K2 | Kt-B3 |
| 9. Kt-Kt3 | B-Kt3 |
| 10. B-K3 | Kt-Q5 |
| 11. BxKt | PxB |
| 12. QKt-K2 | P-K4 |
| 13. O-O | B-Q3 |
| 14. QR-B1 | Q-Q2 |
| 15. Kt-K4 | B-K2 |
| 16. Q-Kt3 | Q-B4 |
| 17. P-KB4 | Q-R4 |
| 18. Q-B2 | P-B3 |
| 19. Kt(2)-Kt3 | Q-R3 |
| 20. QR-K1 | R-KB1 |
| 21. B-K6 | Kt-Q2 |
| 22. BxKtch | KxB |
| 23. Q-Q2 | KR-QB1 |
| 24. Q-R5 | PXP |
| 25. Kt-B5 | BxKt |
| 26. QxBch | K-K1 |
| 27. Kt-Q6ch | Resigns |

Sacramento City Championship

Game No. 957 - From's Gambit

- | | |
|------------|------------------|
| White | Black |
| G. Manhart | S. von Oettingen |
| 1. P-KB4 | P-K4 |
| 2. PXP | P-Q3 |
| 3. PXP | B-Kt5?! |
| 4. PXP | QxP |
| 5. P-Q4 | ... |
- White might try 5. P-QB3 here.
- 5. ... B-Q3
 - 6. Q-Q3 BxRP
 - 7. Q-K4ch B-K3
 - 8. RxB QxR
 - 9. Kt-KB3? Q-Kt6ch
 - 10. K-Q1 Kt-QB3
 - 11. B-B4 Q-B7
 - 12. QKt-Q2 Kt-B3
 - 13. Q-Q3 Kt-Q4
 - 14. B-Kt5 P-KR3
 - 15. P-K4 PxB
 - 16. PxB PxB
 - 17. Kt-K4 BxKt
 - 18. QxBch K-B1
- Resigns

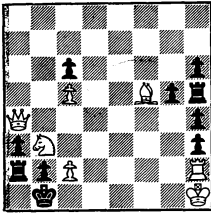
Game No. 956 - Ruy Lopez Defense

- | | |
|------------|------------|
| White | Black |
| M. Goodall | D. Olmsted |
| 1. P-K4 | P-K4 |
| 2. Kt-KB3 | Kt-QB3 |

TASKS:

No. 253

Jerry Panecki
U.S. Problem Bulletin
1966

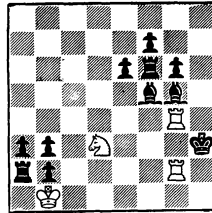


Selfmate in 3

(White moves first, forces
Black to mate him the third
move.)

No. 254

Gyorgy Paros
U.S. Problem Bulletin
1966



Selfmate in 2

(Black moves first and helps White
mate him on the second move.)

Selfmates and helpmates are more closely akin to puzzles than games. Ignore the terminology "self" and "help" and consider just the stipulations. Both are in the current style - just enough force to forch the issue. Solvers are asked to express interest in this column by sending comments - with or without solutions.

Solutions:

No. 249 (Carpenter and Shinkman) 1.Ba4.

No. 250 (Lindgren) 1. Sa4,Kxa4; 2.Kxc4, Kxa5; 3. Rh6. 1...Kxa5;
2. Kxc4, Kxa4; 3. Kc5. 2...Ka6; 3.Rh7. 1...
Ka6; 2. Kxc4, Ka7; 3. Rh7 (2...Kxa5; 3.Rh6).