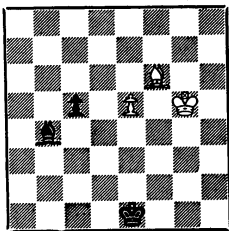


# THE CALIFORNIA CHESS REPORTER

VOLUME XVIII, NUMBER 5

MARCH - APRIL, 1969



White to Play and Win

FROM: 244 Kearny Street, 4th Floor  
San Francisco, Calif. 94108

TO:

# THE CALIFORNIA CHESS REPORTER

Vol. XVIII, No. 5

\$2 per year

March-April, 1969

THE CALIFORNIA CHESS REPORTER, 244 Kearny Street, San Francisco 94108

Published Bi-monthly

Official Organ of the California State Chess Federation

Editor: Guthrie McClain

Associate Editors: Gordon S. Barrett, Los Angeles; Dr. Mark W. Eudey, Berkeley;

Neil T. Austin, Sacramento; Irving Rivise, Los Angeles

Games Editor: Jude F. Acers

Guest Annotator: I. M. William G. Addison

Reporter Tasks: Robert E. Burger

Second-class postage paid at San Francisco, California

## CONTENTS

|                            |       |                             |         |
|----------------------------|-------|-----------------------------|---------|
| American Open.....         | 86-91 | Game of the Month.....      | 98-99   |
| Sacramento Open.....       | 91-92 | CSCF Questionnaire.....     | 99-100  |
| L.A. County Open.....      | 92-94 | Games.....                  | 100-103 |
| Visalia Amateur.....       | 94-95 | Fischer's Memorable Games.. | 103-105 |
| Castle Chess Club.....     | 95-96 | Correction! (end game)..... | 105-106 |
| Southern Calif. Teams..... | 96-97 | Analysis.....               | 106     |
| S.F. Bay Area Teams.....   | 97-98 | CSCF Annual Meeting.....    | 107     |
| Tasks.....                 | 108   |                             |         |

### 36th ANNUAL NORTH-SOUTH TEAM MATCH MOVES TO PISMO BEACH

The annual Northern California vs. Southern California team match will be played this year at Pismo Beach, near San Luis Obispo. There will be a program of events starting Friday, May 30th, and ending Sunday, June 1st, with the big match.

The first event on the program will be the State Rapid-Transit Championship, to start at 3 p.m. Friday. On Friday evening, the first round of a "Tornado" will be held (40 moves in 80 minutes, the fastest time ratable by the U.S.C.F.) During the day, Saturday, the other three rounds of the Tornado will be played. Saturday night at 8 p.m. there will be a banquet and the Annual Meeting and election of directors of the California State Chess Federation - at Mattie's Restaurant on U.S. Highway 101 immediately north of Pismo Beach. On Sunday morning at 10 a.m. the North-South Match will get underway.

Captains will be Irving Rivise for the South, and Guthrie McClain for the North. Headquarters for chess will be the Veteran's Building, located across the freeway from Plessa's Tavern, and headquarters for social events will be the Edgewater Motel, 280 Wadsworth in Pismo Beach.

Lazos Upset Winner In American Open by Andrew Kempner

An unheralded Los Angeles Master topped a record field of 160 in the Fourth Annual American Open, held at the Miramar Hotel in Santa Monica, November 28 - December 1.

James Lazos posted the fine score of  $7\frac{1}{2}$  in the 8-rd event. His bid for the title hung in the balance of flags as a fierce time-pressure scramble developed in his last round game with John Blackstone, L.A. County Champion.

Blackstone, with the black pieces, had secured the slightly more aggressive game, but his usually accurate judgment betrayed him in an open position rife with combinations. Lazos thus succeeded Dr. Anthony Saily (who flew in from Douglaston, New York, where he is writing a theoretical book on chess) as American Open Champion, and pocketed the \$600 first prize. His single draw was with John Varis in round 2.

Lazos, now 31, emerged years ago as a prodigy from the late Herman Steiner's chess stable. His last tournament victory prior to this event was the 1965 Rocky Mountain Open. It is well-known that Jim prefers slow, non-committal openings (one of his novelties is the amorphous 1.P-K3) and has a penchant for finely-drawn positional strategies. His end-game technique is highly respected by the coffee-house set.

Saily, highest rated in the field, finished out of the money along with Tibor Weinberger, and was clearly off form. Perhaps he should not have played after being bedded for 3 days with flu right up to round 1. Tony had clear advantages in his games with George Saily and Norman Lessing but drew. Then it fell to Larry Remlinger of Long Beach to put Tony away for keeps in the money round.

Remlinger prefers a solid game with a tactical punch at the end. Feinting threats on the kingside, he forced Saily to passively blockade his own pieces, then penetrated with a fine queen move which resulted in a passed pawn. Remlinger's 7-1 score was good enough to tie for 2-3 with 20-yr old Walter Shaun Browne of Brooklyn.

Browne, nicked for a point in Rd 4 by Harry Mayer when, as Walter put it he "went crazy" in an overwhelming position, acted like Desperate Desmond throughout the tournament. His flag was always on the brink, the result of endless ruminations in the opening, after which he sometimes made the worst move available. In his game with William Bragg he had to make 28 moves in 2 minutes. This time-pressure syndrome has

become characteristic of Browne's play, but must seriously depress his scores over the long haul. Nevertheless, his ferocious drive to win pulled him even with Remlinger and earned him \$237.50 in prize money.

At 6½ came Blackstone, Ernest Shields Open winner Charles Henin of Sherman Oaks and Earl Pruner of Los Angeles. Weinberger finished with 6 points - tied with some players he traditionally leaves in the dust. The American Open seems to be his hard luck tournament, for he has never won a major prize in 4 years. Weinberger can play exceptional chess when he respects his opponent, but tends to relax when his adversary is from the unwashed masses. For him to have lost positions against lower-rated players is normal, but invariably this Hungarian Houdini brings off a swindle or finesse that reverses the expected result. Not so this time. To Marlie Thomason and Charles Ditlow go the honors of nailing shut Tibor's coffin when their chances developed.

Other prize winners included Expert:1-9: P. Rhee, N. Lessing, R. Schutt, V. Pafnutieff, J. Schmitt, P. Eberlein, G. Schain, A. Suchobeck, and M. Siero. Class A: K. Stani, J. Callaway, 13 tied for 3rd. Class B: R. Gardner; 2-4, V. Fagin, E. Faelton, S. Schwartz. Class C: K. Morrisey, 2-3 R. Ervin, D. Hill, Class D: J. Skratulia. U/r: K. Kahyai (Iran) Woman: D. Bragg. Senior: Lessing Siero, Pafnutieff. U 18: B. Antman. U 14: D. Berry.

## FOURTH AMERICAN OPEN - Santa Monica, November 1968

|                   | 1    | 2    | 3    | 4    | 5    | 6   | 7   | 8   | Score |
|-------------------|------|------|------|------|------|-----|-----|-----|-------|
| 1. J. Lazos       | W65  | D134 | W82  | W53  | W17  | W18 | W8  | W4  | 7½- ½ |
| 2. W. Browne      | W95  | W50  | W59  | L20  | W45  | W23 | W19 | W9  | 7 - 1 |
| 3. L. Remlinger   | W118 | W85  | W33  | D27  | W29  | D20 | W21 | W7  | 7 - 1 |
| 4. J. Blackstone  | W89  | W116 | W39  | D18  | W27  | W15 | W20 | L1  | 6½-1½ |
| 5. E. Pruner      | W94  | W77  | W21  | W35  | L20  | W28 | W11 | D8  | 6½-1½ |
| 6. C. Henin       | W78  | W130 | L35  | D34  | W72  | W53 | W56 | W20 | 6½-1½ |
| 7. A. Saidy       | W132 | W32  | W28  | D19  | W11  | D9  | W14 | L3  | 6 - 2 |
| 8. P. Rhee        | W81  | W88  | W125 | D9   | W22  | W37 | L1  | D5  | 6 - 2 |
| 9. N. Lessing     | W115 | W51  | W66  | D8   | W35  | D7  | W27 | L2  | 6 - 2 |
| 10. T. Weinberger | W91  | L73  | L54  | W80  | W98  | W51 | W46 | W18 | 6 - 2 |
| 11. R. Schutt     | W108 | W72  | W63  | W73  | L7   | W39 | L5  | W43 | 6 - 2 |
| 12. V. Pafnutieff | W110 | W24  | D29  | W134 | D19  | L21 | W45 | W28 | 6 - 2 |
| 13. J. Schmitt    | L92  | W137 | W91  | W85  | D63  | D73 | W29 | W31 | 6 - 2 |
| 14. P. Eberlein   | W120 | W43  | L73  | W51  | W40  | W41 | L7  | W33 | 6 - 2 |
| 15. G. Schain     | W86  | L64  | W65  | W62  | W116 | L4  | W73 | W58 | 6 - 2 |
| 16. A. Suchobeck  | W114 | L75  | W25  | W24  | W50  | L22 | W77 | W37 | 6 - 2 |
| 17. M. Siero      | W159 | W34  | W62  | D22  | L1   | D29 | W68 | W39 | 6 - 2 |

## Fourth American Open (Continued)

|                   | 1    | 2    | 3    | 4    | 5    | 6    | 7    | 8    | Score |
|-------------------|------|------|------|------|------|------|------|------|-------|
| 18. S. Spencer    | W55  | W81  | W40  | D4   | W32  | L1   | W22  | L10  | 5½-2½ |
| 19. G. Saidi      | W144 | W84  | W64  | D7   | D12  | W83  | L2   | D21  | 5½-2½ |
| 20. H. Mayer      | W42  | W44  | W92  | W2   | W5   | D3   | L4   | L6   | 5½-2½ |
| 21. K. Stani      | W131 | W80  | L5   | W54  | W90  | W12  | L3   | D19  | 5½-2½ |
| 22. K. Smith      | W98  | W38  | W49  | D17  | L8   | W16  | L18  | W53  | 5½-2½ |
| 23. W. Bragg      | W142 | D41  | D74  | W84  | W130 | L2   | D44  | W65  | 5½-2½ |
| 24. J. Callaway   | W105 | L12  | W101 | L16  | W111 | D59  | W92  | W56  | 5½-2½ |
| 25. R. Gardner    | L27  | W146 | L16  | W112 | W66  | D71  | W69  | W52  | 5½-2½ |
| 26. K. Kahyai     | D58  | L102 | W36  | D69  | D34  | W107 | W50  | W63  | 5½-2½ |
| 27. M. Leidner    | W25  | W107 | W75  | D3   | L4   | W63  | L9   | D36  | 5 - 3 |
| 28. B. Antman     | W90  | W57  | L7   | W107 | W64  | L5   | W41  | L12  | 5 - 3 |
| 29. F. McReynolds | W99  | W132 | D12  | W92  | L3   | D17  | L13  | W76  | 5 - 3 |
| 30. D. Berry      | W36  | L40  | D83  | W58  | W134 | D33  | L43  | W77  | 5 - 3 |
| 31. C. Batchelder | W119 | D100 | W102 | D41  | D73  | D76  | W38  | L13  | 5 - 3 |
| 32. B. Lainson    | W146 | L7   | W42  | W122 | L18  | L65  | W118 | W87  | 5 - 3 |
| 33. V. Radaikin   | W67  | W87  | L3   | D55  | W60  | D30  | W86  | L14  | 5 - 3 |
| 34. D. Welsh      | W156 | L17  | W99  | D6   | D26  | L43  | W122 | W90  | 5 - 3 |
| 35. R. Moore      | W129 | W147 | W6   | L5   | L9   | W62  | L58  | W84  | 5 - 3 |
| 36. B. Gross      | L30  | D61  | L26  | W118 | W54  | W105 | W125 | D27  | 5 - 3 |
| 37. V. Fagin      | W101 | L39  | W97  | W43  | W68  | L8   | W47  | L16  | 5 - 3 |
| 38. R. Hough      | W151 | L22  | L119 | W67  | W81  | W88  | L31  | W86  | 5 - 3 |
| 39. T. Kemmerer   | W133 | W37  | L4   | W82  | W88  | L10  | W76  | L17  | 5 - 3 |
| 40. C. Yergin     | W111 | W30  | L18  | W79  | L14  | L44  | W91  | W88  | 5 - 3 |
| 41. E. Faelten    | W157 | D23  | W60  | D31  | W59  | L14  | L28  | W68  | 5 - 3 |
| 42. K. Morrissey  | L20  | W158 | L32  | L106 | W96  | W79  | WF   | W85  | 5 - 3 |
| 43. L. Standers   | W117 | L14  | W76  | L37  | W94  | W34  | W30  | L11  | 5 - 3 |
| 44. S. Schwartz   | W70  | L20  | L79  | W137 | W101 | W40  | D23  | D48  | 5 - 3 |
| 45. K. Commons    | L80  | W111 | W118 | W78  | L2   | W64  | L12  | W83  | 5 - 3 |
| 46. L. Corbin     | L147 | W129 | L78  | W133 | W110 | W84  | L10  | W82  | 5 - 3 |
| 47. R. Ng         | W135 | L82  | L94  | W142 | W91  | W130 | L37  | W72  | 5 - 3 |
| 48. J. Mortz      | W112 | L92  | W89  | L64  | W78  | W75  | D65  | D44  | 5 - 3 |
| 49. R. Hammie     | L88  | W56  | L22  | W135 | L65  | W142 | D54  | W94  | 4½-3½ |
| 50. B. Latta      | W143 | L2   | W80  | W125 | L16  | D90  | L26  | W92  | 4½-3½ |
| 51. K. Jones      | W138 | L9   | W133 | L14  | W74  | L10  | D94  | W108 | 4½-3½ |
| 52. R. DeLaura    | D60  | D83  | W115 | L90  | D92  | W89  | W57  | L25  | 4½-3½ |
| 53. K. Valdma     | D102 | W58  | W100 | L1   | W105 | L6   | W55  | L22  | 4½-3½ |
| 54. C. Ditlow     | W122 | L59  | W10  | L21  | L36  | W112 | D49  | W97  | 4½-3½ |
| 55. R. Chalker    | L18  | W131 | W132 | D33  | W68  | L56  | L53  | W106 | 4½-3½ |
| 56. S. Rubin      | W124 | L49  | W98  | D72  | W57  | W55  | L6   | L24  | 4½-3½ |
| 57. D. Sefton     | W158 | L28  | D105 | W129 | L56  | W123 | L52  | W101 | 4½-3½ |
| 58. R. Melniker   | D26  | L53  | W141 | L30  | W104 | W61  | W35  | L15  | 4½-3½ |
| 59. W. Kennedy    | W123 | W54  | L2   | W75  | L41  | D24  | D83  | D64  | 4½-3½ |
| 60. D. Hill       | D52  | W141 | L41  | W100 | L33  | L72  | W107 | W103 | 4½-3½ |

## Fourth American Open (Continued)

|                     | 1    | 2    | 3    | 4    | 5    | 6    | 7    | 8    | Score |
|---------------------|------|------|------|------|------|------|------|------|-------|
| 61. R. Ervin        | L69  | D36  | L140 | W157 | W103 | L58  | W102 | W100 | 4½-3½ |
| 62. L. Nezhni       | W126 | W154 | L17  | L15  | W122 | L35  | D97  | W93  | 4½-3½ |
| 63. D. Heisman      | W139 | W109 | L11  | W94  | D13  | L27  | W100 | L26  | 4½-3½ |
| 64. Ross Stoutenbro | W155 | W15  | L19  | W48  | L28  | L45  | W81  | D59  | 4½-3½ |
| 65. P. Yasutake     | L1   | W136 | L15  | W99  | W49  | W32  | D48  | L23  | 4½-3½ |
| 66. Dr. G. Gamboa   | W137 | W128 | L9   | L88  | L25  | W144 | L87  | W131 | 4 - 4 |
| 67. D. Bragg        | L33  | L101 | W155 | L38  | W109 | W148 | L91  | WF   | 4 - 4 |
| 68. F. Borges       | L128 | W139 | W110 | W74  | L37  | W82  | L17  | W41  | 4 - 4 |
| 69. C. Ludvik       | W61  | L125 | D104 | D26  | D89  | W119 | L25  | D78  | 4 - 4 |
| 70. P. Pedersen     | L44  | W112 | L84  | L115 | L123 | W143 | W151 | W124 | 4 - 4 |
| 71. S. Geller       | D74  | L93  | W106 | W104 | L76  | D25  | L88  | W129 | 4 - 4 |
| 72. S. Levine       | W153 | L11  | W147 | D56  | L6   | W60  | D90  | L47  | 4 - 4 |
| 73. M. Thomson      | W79  | W10  | W14  | L11  | D31  | D13  | L15  | LF   | 4 - 4 |
| 74. A. Jones        | D71  | W140 | D23  | L68  | L51  | D117 | W134 | D75  | 4 - 4 |
| 75. L. Post         | W150 | W16  | L27  | L59  | W79  | L48  | D108 | D74  | 4 - 4 |
| 76. G. Wren         | D141 | W106 | L43  | W150 | W71  | D31  | L39  | L29  | 4 - 4 |
| 77. R. Neustaedter  | W148 | L5   | L90  | W124 | W131 | W125 | L16  | L30  | 4 - 4 |
| 78. K. Leonhardt    | L6   | W156 | W46  | L45  | L48  | D121 | W105 | D69  | 4 - 4 |
| 79. R. Tajima       | L73  | W120 | W44  | L40  | L75  | L42  | W112 | W123 | 4 - 4 |
| 80. R. Usan         | W45  | L21  | L50  | L10  | W138 | L103 | W146 | W125 | 4 - 4 |
| 81. D. Slechta      | L8   | L18  | W145 | W127 | L38  | W152 | L64  | W126 | 4 - 4 |
| 82. M. Keuley       | W149 | W47  | L1   | L39  | W97  | L68  | W127 | L46  | 4 - 4 |
| 83. T. Devine       | D106 | D52  | D30  | W93  | W140 | L19  | D59  | L45  | 4 - 4 |
| 84. J. Jennings     | W152 | L19  | W70  | L23  | W121 | L46  | W126 | L35  | 4 - 4 |
| 85. B. Hamilton     | W145 | L3   | W135 | L13  | L86  | W124 | W95  | L42  | 4 - 4 |
| 86. H. Ilrakall     | L15  | L97  | W149 | W115 | W85  | W116 | L33  | L38  | 4 - 4 |
| 87. R. Walmsley     | W97  | L32  | L154 | W123 | L125 | W131 | W66  | L32  | 4 - 4 |
| 88. R. Glass        | W49  | L8   | W143 | W66  | L39  | L38  | W71  | L40  | 4 - 4 |
| 89. R. Newbold      | L4   | W138 | L48  | W151 | D69  | L52  | W117 | D99  | 4 - 4 |
| 90. Glen Wood       | L28  | W127 | W77  | W52  | L21  | D50  | D72  | L34  | 4 - 4 |
| 91. R. Myers        | L10  | W96  | L13  | W147 | L47  | W67  | L40  | W128 | 4 - 4 |
| 92. J. Krotki       | W13  | W48  | L20  | L29  | D52  | W134 | L24  | L50  | 3½-4½ |
| 93. L. Christiansen | D140 | W71  | L134 | L83  | L128 | W139 | W121 | L62  | 3½-4½ |
| 94. W. Beattie      | L5   | W148 | W47  | L63  | L43  | W128 | D51  | L49  | 3½-4½ |
| 95. A. Caldwell     | L2   | L103 | W136 | L131 | W99  | W111 | L85  | D96  | 3½-4½ |
| 96. J. Skratulia    | L116 | L91  | L120 | W149 | L42  | W135 | W142 | D95  | 3½-4½ |
| 97. D. Weil         | L87  | W86  | L37  | W114 | L82  | W115 | D63  | L54  | 3½-4½ |
| 98. J. Cole         | L22  | W145 | L56  | W128 | L10  | D101 | L106 | W139 | 3½-4½ |
| 99. P. Bronson      | L29  | W113 | L34  | L65  | L95  | W156 | W115 | D89  | 3½-4½ |
| 100. P. Wrangell    | WF   | D31  | L53  | L60  | W150 | W106 | L63  | L61  | 3½-4½ |
| 101. J. Santarius   | L37  | W67  | L24  | W132 | L44  | D98  | W104 | L57  | 3½-4½ |
| 102. S. Vigneau     | D53  | W26  | L31  | L140 | L106 | W150 | L61  | W109 | 3½-4½ |
| 103. S. Beckwith    | L125 | W95  | D150 | LF   | L61  | W80  | W119 | L60  | 3½-4½ |

## Fourth American Open (Continued)

|                       | 1    | 2    | 3    | 4    | 5    | 6    | 7     | 8    | Score |
|-----------------------|------|------|------|------|------|------|-------|------|-------|
| 104. P. Secord        | L154 | W155 | D69  | L71  | L58  | W136 | L101  | W138 | 3½-4½ |
| 105. W. Hunt          | L24  | W124 | D57  | DF   | L53  | L36  | L78   | W137 | 3½-4½ |
| 106. D. Krystall      | D83  | L76  | L71  | W42  | W102 | L100 | W98   | L55  | 3½-4½ |
| 107. M. Flood         | W113 | L27  | W128 | L28  | D119 | L26  | L60   | W127 | 3½-4½ |
| 108. C. Fotias        | L11  | L126 | W148 | L121 | W146 | W127 | D75   | L51  | 3½-4½ |
| 109. V. Ahmed         | BYE  | L63  | L137 | D138 | L67  | W153 | W113  | L102 | 3½-4½ |
| 110. D. Hinrichsen    | L12  | W143 | L68  | W146 | L46  | L122 | L131  | W151 | 3½-4½ |
| 111. M. Mills         | L40  | L45  | W117 | W153 | L24  | L95  | L124  | W152 | 3 - 5 |
| 112. J. Jiron         | L48  | L70  | W159 | L25  | W145 | L54  | L79   | W142 | 3 - 5 |
| 113. C. Gallo         | L107 | L99  | L124 | L152 | L139 | W157 | L109* | W146 | 3 - 5 |
| 114. P. Razien        | L16  | L150 | W156 | L97  | W141 | L126 | L128  | W153 | 3 - 5 |
| 115. D. Linn          | L9   | W159 | L52  | W70  | L86  | L97  | L99   | W143 | 3 - 5 |
| 116. F. Hufnagel      | W96  | L4   | W142 | W119 | L15  | L86  | -     | -    | 3 - 5 |
| 117. R. LaBre         | L43  | L123 | L111 | W156 | W137 | D74  | L89   | D119 | 3 - 5 |
| 118. D. Liegerman     | L3   | W153 | L45  | L36  | W147 | W151 | L32   | -    | 3 - 5 |
| 119. W. McKaig        | L31  | W121 | W38  | L116 | D107 | L69  | L103  | D117 | 3 - 5 |
| 120. J. Batchelder    | L14  | L79  | W96  | L126 | L151 | W145 | D137  | D121 | 3 - 5 |
| 121. E. Simon         | L130 | L119 | W151 | W108 | L84  | D78  | L93   | D120 | 3 - 5 |
| 122. L. Vikander      | L54  | W144 | W126 | L32  | L62  | W110 | L34   | -    | 3 - 5 |
| 123. R. Stamps        | L59  | W117 | L130 | L87  | W70  | L57  | L79   | W152 | 3 - 5 |
| 124. J. Surlow        | L56  | L105 | W113 | L77  | W129 | L85  | W111  | L70  | 3 - 5 |
| 125. S. Racz          | W103 | W69  | L8   | L50  | W87  | L77  | L36   | L80  | 3 - 5 |
| 126. G. Fitzgerald    | L62  | W108 | L122 | W120 | L55  | W114 | L84   | L81  | 3 - 5 |
| 127. J. Lauterbach    | W148 | L90  | L146 | L81  | W135 | L108 | L82   | L107 | 2 - 6 |
| 128. B. Bowe          | W68  | L66  | L107 | L98  | W93  | L94  | W114  | L91  | 3 - 5 |
| 129. J. Williams      | L35  | L46  | W152 | L57  | L124 | W141 | W144  | L71  | 3 - 5 |
| 130. A. Kraus         | W121 | L6   | W123 | WF   | L23  | L47  | LF    | -    | 3 - 5 |
| 131. W. Singleton     | L21  | L55  | W158 | W95  | L77  | L87  | W110  | L66  | 3 - 5 |
| 132. G. Davis         | W160 | L7   | L29  | L55  | L101 | L137 | W149  | W148 | 3 - 5 |
| 133. J. Weiler        | L39  | W149 | L51  | L46  | L152 | L148 | W141  | W145 | 3 - 5 |
| 134. J. Varis         | W136 | D1   | W93  | L12  | L30  | L92  | L74   | -    | 2½-5½ |
| 135. O. Higgins       | L47  | W157 | L85  | L49  | L127 | L96  | D156  | W144 | 2½-5½ |
| 136. D. Martin        | L134 | L65  | L95  | D141 | W157 | L104 | L138  | W159 | 2½-5½ |
| 137. J. Adamson       | L66  | L13  | W109 | L44  | L117 | W132 | D120  | L105 | 2½-5½ |
| 138. J. Newsom        | L51  | L89  | L144 | D109 | L80  | W155 | W136  | L104 | 2½-5½ |
| 139. A. Gullmes       | L63  | L68  | D157 | L144 | W113 | L93  | W150  | L98  | 2½-5½ |
| 140. J. Hanken        | D93  | L74  | W61  | W102 | L83  | -    | -     | -    | 2½-5½ |
| 141. W. Mohawk        | D76  | L60  | L58  | D136 | L114 | L129 | L133  | W156 | 2 - 6 |
| 142. K. Kristofferson | L23  | W152 | L116 | L47  | W159 | L49  | L96   | L112 | 2 - 6 |
| 143. C. Judd          | L50  | L110 | L88  | L159 | W149 | L70  | W158  | L115 | 2 - 6 |
| 144. D. Rader         | L19  | L122 | W138 | W139 | L66  | LF   | L129  | L135 | 2 - 6 |
| 145. Mrs. Lieberman   | L85  | L98  | L81  | W158 | L112 | L120 | W159  | L133 | 2 - 6 |
| 146. B. Murdock       | L32  | L25  | W127 | L110 | L108 | W159 | L80   | L113 | 2 - 6 |

## Fourth American Open (Continued)

|                   | 1    | 2    | 3    | 4    | 5    | 6    | 7    | 8    | Score |
|-------------------|------|------|------|------|------|------|------|------|-------|
| 147. R. Moore     | W46  | L35  | L72  | L91  | L118 | L153 | L113 | W155 | 2 - 6 |
| 148. N. Jones     | L77  | L94  | L108 | L127 | W158 | W133 | L67  | L132 | 2 - 6 |
| 149. R. Pedersen  | L82  | L133 | L86  | L96  | L143 | BYE  | L132 | W158 | 2 - 6 |
| 150. T. Masters   | L75  | W114 | D103 | L76  | L100 | L102 | L118 | L139 | 2 - 6 |
| 151. W. McGrann   | L38  | WF   | L121 | L89  | W120 | LF   | L70  | L110 | 2 - 6 |
| 152. S. King      | L84  | L142 | L129 | W113 | W133 | L81  | L123 | L111 | 2 - 6 |
| 153. E. Briggs    | L72  | L118 | W121 | L111 | W147 | L109 | BYE  | L114 | 2 - 6 |
| 154. W. Blackmore | W104 | L62  | W87  | -    | -    | -    | -    | -    | 2 - 6 |
| 155. R. Judd      | L64  | L104 | L67  | L138 | L156 | L158 | L157 | L147 | 0 - 8 |
| 156. C. Eglett    | L34  | L78  | L114 | L117 | W155 | L99  | D135 | L141 | 1½-6½ |
| 157. R. Norton    | L41  | L135 | D139 | L61  | L136 | L113 | W155 | L150 | 1½-6½ |
| 158. C. Schwartz  | L57  | L42  | L131 | L145 | L148 | L155 | L143 | L149 | 1 - 7 |
| 159. M. Masters   | L17  | L115 | L112 | W143 | L142 | L146 | L145 | L136 | 1 - 7 |
| 160. T. Farrinton | L132 | -    | -    | -    | -    | -    | -    | -    | 0 - 8 |

FIVE-WAY TIE IN SACRAMENTO OPEN:

Frank Thornally, Richard Fauber, David Blohm, Kenneth Smith, and Michael Goodall tied for first place in the Sacramento Open in November. The first four named divided the top prizes, while Goodall took Class A. There were 11 other players who won class prizes. Richard Fauber further distinguished himself by defeating Smith, editor of Chess Digest and the pre-tournament favorite and drawing with Thornally and Blohm. In all three games, Fauber had the Black pieces. The TD was Steven Markman.

## SACRAMENTO OPEN, NOVEMBER 23-24, 1968

|                 | 1   | 2   | 3   | 4   | 5   | Score |
|-----------------|-----|-----|-----|-----|-----|-------|
| 1. F. Thornally | W13 | W5  | D2  | D9  | W11 | 4 - 1 |
| 2. R. Fauber    | W29 | W21 | D1  | W4  | D3  | 4 - 1 |
| 3. D. Blohm     | W20 | W11 | D9  | W8  | D2  | 4 - 1 |
| 4. K. Smith     | W12 | W6  | W10 | L2  | W9  | 4 - 1 |
| J. M. Goodall   | W31 | L1  | W14 | W15 | W10 | 4 - 1 |
| 6. O. Celle     | W24 | L4  | W21 | D7  | W12 | 3½-1½ |
| 7. R. Mitchell  | W25 | L10 | W23 | D6  | W17 | 3½-1½ |
| 8. G. Brinkley  | D28 | W30 | W27 | L3  | W16 | 3½-1½ |
| 9. R. Bliss     | W18 | W14 | D3  | D1  | L4  | 3 - 2 |
| 10. R. Hoppe    | W19 | W7  | L4  | W13 | L5  | 3 - 2 |
| 11. A. DiMilo   | W32 | L3  | W22 | W17 | L1  | 3 - 2 |
| 12. R. Sills    | L4  | W33 | W18 | W27 | L6  | 3 - 2 |
| 13. J. Jennings | L1  | W24 | W30 | L10 | W20 | 3 - 2 |
| 14. D. Mitchell | W34 | L9  | L5  | W24 | W22 | 3 - 2 |



## Sacramento Open (Continued)

|                    | 1   | 2   | 3   | 4   | 5   | Score |
|--------------------|-----|-----|-----|-----|-----|-------|
| 15. K. Grivainis   | W22 | L17 | W20 | L5  | W21 | 3 - 2 |
| 16. R. Vorpapel    | D27 | W28 | D17 | W19 | L8  | 3 - 2 |
| 17. B. Lainson     | W23 | W5  | D16 | L11 | L7  | 2½-2½ |
| 18. J. M. Yates    | L9  | D34 | L12 | W29 | W23 | 2½-2½ |
| 19. G. Manhart     | L10 | D29 | W34 | L16 | W28 | 2½-2½ |
| 20. C. Parcels     | L3  | W31 | L15 | W25 | L13 | 2 - 3 |
| 21. J. Kirkpatrick | W33 | L2  | L6  | W28 | L15 | 2 - 3 |
| 22. J. Arguijo     | L15 | W26 | L11 | W30 | L14 | 2 - 3 |
| 23. D. Pearce      | L17 | W25 | L7  | W26 | L18 | 2 - 3 |
| 24. F. Jady        | L6  | L13 | W33 | L14 | W31 | 2 - 3 |
| 25. S. Bailey      | L7  | L23 | W31 | L20 | W30 | 2 - 3 |
| 26. D. Quarve      | L30 | L22 | W32 | L23 | W27 | 2 - 3 |
| 27. R. Hamilton    | D16 | W32 | L8  | L12 | L26 | 1½-3½ |
| 28. F. Garosi      | D8  | L16 | W29 | L21 | L19 | 1½-3½ |
| 29. R. Jablonski   | L2  | D19 | L28 | L18 | W32 | 1½-3½ |
| 30. D. Mack        | W26 | L8  | L13 | L22 | L25 | 1 - 4 |
| 31. L. Jackson     | L5  | L20 | L25 | W33 | L24 | 1 - 4 |
| 32. J. Dennis      | L11 | L27 | L26 | W34 | L29 | 1 - 4 |
| 33. D. Hoskin      | L21 | L12 | L24 | L31 | W34 | 1 - 4 |
| 34. G. Shaffer     | L14 | D18 | L19 | L32 | L33 | ½-4½  |

KAHYAI OF IRAN WINS LOS ANGELES COUNTY OPEN

Keyhecco Kahyai from Iran, a visitor to Los Angeles, won the 1969 Los Angeles County Open in January with a perfect score of 6-0. There were five players tied for second place with 5-1 scores; John Blackstone, Charles Henin, Aki Kanamori, Don Bicknell, and Robert Klein. The prize winners: Expert, A. Kanamori; Class A, D. Bicknell; Class B, O. Parniani (Iran), J. Kent, G. Istvanyi and S. Schwartz all tied; Class C, R. Ervin; Class D, K. Myer; Unrated, D. Harrison. The tournament was sponsored by the Santa Monica Bay Chess Club and was directed by Andy Kempner.

## LOS ANGELES COUNTY OPEN, JANUARY 10-12, 1969

|                  | 1   | 2   | 3   | 4   | 5   | 6   | Score |
|------------------|-----|-----|-----|-----|-----|-----|-------|
| 1. I. Kahyai     | W29 | W33 | W6  | W3  | W9  | W4  | 6 - 0 |
| 2. J. Blackstone | W37 | W21 | W56 | L7  | W22 | W10 | 5 - 1 |
| 3. C. Henin      | W44 | W22 | W30 | L1  | W21 | W11 | 5 - 1 |
| 4. A. Kanamori   | W49 | W23 | W55 | W5  | W14 | L1  | 5 - 1 |
| 5. D. Bicknell   | W19 | W35 | W16 | L4  | W31 | W9  | 5 - 1 |
| 6. R. Klein      | W28 | W64 | L1  | W38 | W23 | W12 | 5 - 1 |
| 7. R. DeLaura    | W59 | W52 | L14 | W2  | W32 | D17 | 4½-1½ |
| 8. J. Levin      | D26 | D48 | D28 | W43 | W36 | W31 | 4½-1½ |

## Los Angeles County Open, January 10-12 (Continued)

|                   | 1   | 2   | 3   | 4   | 5   | 6   | Score |
|-------------------|-----|-----|-----|-----|-----|-----|-------|
| 9. T. Weinberger  | W42 | W13 | W54 | W18 | L1  | L5  | 4 - 2 |
| 10. D. Parniani   | L33 | W72 | W48 | W54 | W18 | L2  | 4 - 2 |
| 11. R. Latta      | W63 | L50 | W33 | W27 | W24 | L3  | 4 - 2 |
| 12. R. Hough      | W47 | D66 | W50 | D32 | W29 | L6  | 4 - 2 |
| 13. G. Davis      | W70 | L9  | D24 | W68 | W27 | D14 | 4 - 2 |
| 14. T. Saidi      | W39 | W36 | W7  | D17 | L4  | D13 | 4 - 2 |
| 15. G. Olsson     | -   | W59 | W42 | D52 | W28 | D16 | 4 - 2 |
| 16. W. Bragg      | W53 | W31 | L5  | D36 | W52 | D15 | 4 - 2 |
| 17. J. Kent       | D48 | D26 | W49 | D14 | W50 | D7  | 4 - 2 |
| 18. K. Stani      | W62 | W24 | W43 | L9  | L10 | W29 | 4 - 2 |
| 19. G. Istvanyi   | L5  | L47 | W73 | W70 | W60 | W30 | 4 - 2 |
| 20. E. Hildreth   | -   | W*  | L37 | W45 | W48 | W32 | 4 - 2 |
| 21. A. Lubin      | W*  | L2  | W34 | W60 | L3  | W33 | 4 - 2 |
| 22. B. Hall       | W73 | L3  | W37 | W53 | L2  | W34 | 4 - 2 |
| 23. S. Schwarts   | W75 | L4  | W39 | W56 | L6  | W38 | 4 - 2 |
| 24. C. Davidson   | W*  | L18 | D13 | W66 | L11 | W50 | 3½-2½ |
| 25. J. Batchelder | W67 | L56 | W41 | -   | D26 | W51 | 3½-2½ |
| 26. D. Harrison   | D8  | D17 | L36 | W62 | D25 | W52 | 3½-2½ |
| 27. R. Walmisley  | D45 | W68 | W66 | L11 | L13 | W53 | 3½-2½ |
| 28. R. Ervin      | L6  | W51 | D8  | W40 | L15 | W54 | 3½-2½ |
| 29. C. Ditlow     | L1  | W71 | W47 | W55 | L12 | L18 | 3 - 3 |
| 30. C. Yergin     | W71 | W69 | L3  | L31 | W46 | L19 | 3 - 3 |
| 31. S. Vigneau    | W46 | L16 | W35 | W30 | L5  | L8  | 3 - 3 |
| 32. D. Linn       | D68 | W45 | W67 | D12 | L7  | L20 | 3 - 3 |
| 33. R. Radwin     | W10 | L1  | L11 | W41 | W49 | L21 | 3 - 3 |
| 34. J. Nanassy    | W57 | L54 | L21 | W47 | W68 | L22 | 3 - 3 |
| 35. B. Petersen   | W61 | L5  | L31 | W69 | L38 | W57 | 3 - 3 |
| 36. V. Fagin      | W58 | L14 | W26 | D16 | L8  | D37 | 3 - 3 |
| 37. D. Levy       | L2  | W58 | W20 | L22 | D54 | D36 | 3 - 3 |
| 38. B. Kohn       | L40 | W74 | W69 | L6  | W35 | L23 | 3 - 3 |
| 39. T. Twaiten    | L14 | W70 | L23 | L48 | W62 | W58 | 3 - 3 |
| 40. L. Schlueter  | W38 | L55 | L52 | L28 | W44 | W60 | 3 - 3 |
| 41. J. Andrews    | L52 | W65 | L25 | L33 | W66 | W59 | 3 - 3 |
| 42. V. Lopez      | L9  | W75 | L15 | D51 | L53 | W*  | 2½-3½ |
| 43. L. Reuther    | D50 | W57 | L18 | L8  | L51 | W57 | 2½-3½ |
| 44. B. Donner     | L3  | L67 | D75 | W74 | L40 | W66 | 2½-3½ |
| 45. L. Strongman  | D27 | L32 | L68 | L20 | W75 | W65 | 2½-3½ |
| 46. M. Vasquez    | L31 | L53 | W72 | W61 | L30 | D47 | 2½-3½ |
| 47. T. Myer       | L12 | W19 | L29 | L34 | W61 | D46 | 2½-3½ |
| 48. H. Hydle      | D17 | D8  | L10 | W39 | L20 | D49 | 2½-3½ |
| 49. J. Williams   | L4  | W73 | L17 | W67 | L33 | D48 | 2½-3½ |
| 50. M. Pollowtiz  | D43 | W11 | L12 | W64 | L17 | L24 | 2½-3½ |
| 51. R. Gerlich    | L64 | L28 | W59 | D42 | W43 | L25 | 2½-3½ |

## Los Angeles County Open (Continued)

|                      | 1   | 2   | 3   | 4   | 5   | 6   | Score |
|----------------------|-----|-----|-----|-----|-----|-----|-------|
| 52. K. Morrisey      | W41 | L7  | W40 | D15 | L16 | L26 | 2½-3½ |
| 53. P. Bronson       | L16 | W46 | D64 | L22 | W42 | L27 | 2½-3½ |
| 54. J. Mortz         | W74 | W34 | L9  | L10 | D37 | L28 | 2½-3½ |
| 55. R. Lake          | W72 | W40 | L4  | L29 | -   | -   | 2 - 4 |
| 56. W. Garrett       | W65 | W25 | L2  | L23 | -   | -   | 2 - 4 |
| 57. B. Vallens       | L34 | L43 | L74 | W71 | W*  | L35 | 2 - 4 |
| 58. W. Wozniakowsky  | L36 | L37 | L65 | W63 | W74 | L39 | 2 - 4 |
| 59. D. Kristofferson | L7  | L15 | L51 | W72 | W73 | L41 | 2 - 4 |
| 60. L. Johnson       | L66 | W62 | W61 | L21 | L19 | L40 | 2 - 4 |
| 61. A. Garcia        | L35 | L63 | L60 | L46 | L47 | W72 | 2 - 4 |
| 62. B. Murdock       | L18 | L60 | W63 | L26 | L39 | W73 | 2 - 4 |
| 63. I. Nanassy       | L11 | L61 | L62 | L58 | W*  | W74 | 2 - 4 |
| 64. D. Sefton        | W51 | L6  | D53 | L50 | -   | -   | 1½-4½ |
| 65. D. Martin        | L56 | L41 | W58 | L73 | D67 | L45 | 1½-4½ |
| 66. E. Simon         | W60 | D12 | L27 | L24 | L41 | L44 | 1½-4½ |
| 67. D. Rubinsky      | L25 | W44 | L32 | L49 | D65 | L43 | 1½-4½ |
| 68. H. Kaufler       | D32 | L27 | W45 | L13 | L34 | -   | 1½-4½ |
| 69. E. Jennings      | W75 | L30 | L38 | L35 | -   | -   | 1 - 5 |
| 70. S. Blowers       | L13 | L39 | W71 | L19 | -   | -   | 1 - 5 |
| 71. R. Kalenborn     | L30 | L29 | L70 | L57 | L72 | W75 | 1 - 5 |
| 72. E. Briggs        | L55 | L10 | L46 | L59 | W71 | L61 | 1 - 5 |
| 73. W. White         | L22 | L49 | L19 | W65 | L59 | L62 | 1 - 5 |
| 74. A. Patsch        | L54 | L38 | W57 | L44 | L58 | L63 | 1 - 5 |
| 75. R. Jones         | L23 | L42 | D44 | L69 | L45 | L71 | ½-5½  |

JONES WINNER OF VISALIA AMATEUR OPEN

Albyn Jones, a 16-year-old student who recently moved from Porterville to Santa Monica, won first place in the annual pre-Easter Visalia Amateur Open a full point ahead of four players who tied for second. First prize was \$70 and a trophy. Class winners: Gregory Wong, Fresno Class C; Lanny Chan, Visalia, Class D; David Stockdale, Visalia, College of the Sequoias; Robert Clark, Visalia winner; Walter Stuart, Fresno, Tri-Country winner; Donna Bragg, Los Angeles, First lady; Gary Wong, Fresno, Junior; Mike Pollowitz, Hollywood, Novice. The tournament was organized by Chris Fotias and directed by Bill Bragg of Santa Monica.

FIFTH ANNUAL VISALIA AMATEUR OPEN, MARCH 28-29, 1969

|               | 1   | 2  | 3   | 4   | 5  | 6   | Score |
|---------------|-----|----|-----|-----|----|-----|-------|
| 1. A. Jones   | W23 | W6 | D12 | W13 | W2 | W9  | 5½-1½ |
| 2. G. Wong    | W18 | W3 | W8  | W5  | L1 | D10 | 4½-1½ |
| 3. P. Hubbard | W34 | L2 | W32 | W6  | W4 | D5  | 4½-1½ |

## Fifth Annual Visalia Amateur Open (Continued)

|                  | 1   | 2   | 3   | 4   | 5    | 6   | Score |
|------------------|-----|-----|-----|-----|------|-----|-------|
| 4. R. G. Clark   | W37 | W11 | D7  | W15 | L3   | W14 | 4½-1½ |
| 5. W. Stuart     | W35 | W16 | W26 | L2  | W7   | D3  | 4½-1½ |
| 6. D. Ifill      | W27 | L1  | W18 | L3  | W25  | W16 | 4 - 2 |
| 7. G. Oakes      | W33 | W10 | D4  | D12 | L5   | W20 | 4 - 2 |
| 8. R. Bobo       | W24 | W21 | L2  | W11 | L9   | W19 | 4 - 2 |
| 9. K. Morrissey  | W19 | W12 | W25 | W17 | W8   | L1  | 4 - 2 |
| 10. V. Pope      | W26 | L7  | D24 | W23 | W13  | D2  | 4 - 2 |
| 11. J. Rowell    | W20 | L4  | W28 | L8  | W30  | W12 | 4 - 2 |
| 12. A. Stable    | W36 | W9  | D1  | D7  | D16  | L11 | 3½-2½ |
| 13. D. Bragg     | W31 | W17 | D15 | L1  | L10  | W23 | 3½-2½ |
| 14. M. Polbwitz  | L17 | W34 | W21 | D16 | W15  | L4  | 3½-2½ |
| 15. J. Jacino    | W30 | W29 | D13 | L4  | L14  | W24 | 3½-2½ |
| 16. R. Oyler     | W28 | L5  | W27 | D14 | D12  | L6  | 3 - 3 |
| 17. C. Fotias    | W14 | L13 | W31 | L9  | L20  | W28 | 3 - 3 |
| 18. B. Myers     | L2  | W19 | L6  | D32 | W27  | D21 | 3 - 3 |
| 19. J. Bush      | L9  | L18 | W36 | W31 | W29* | L8  | 3 - 3 |
| 20. C. Dawdy     | L11 | L25 | W37 | W24 | W17  | L7  | 3 - 3 |
| 21. L. Williams  | W22 | L8  | L14 | W28 | D23  | D18 | 3 - 3 |
| 22. D. Stockdale | L21 | L23 | L34 | BYE | W31  | W30 | 3 - 3 |
| 23. L. Chan      | L1  | W22 | W29 | L10 | D21  | L13 | 2½-3½ |
| 24. R. Casey     | L8  | W33 | D10 | L20 | W32  | L15 | 2½-3½ |
| 25. K. Linebaugh | L29 | W20 | L9  | W33 | L6   | D26 | 2½-3½ |
| 26. R. Provost   | L10 | W30 | L5  | L29 | W33  | D25 | 2½-3½ |
| 27. G. Wong      | L6  | BYE | L16 | D34 | L18  | D32 | 2 - 4 |
| 28. N. Jones     | L16 | W35 | L11 | L21 | W36  | L17 | 2 - 4 |
| 29. E. Krogh     | W25 | L15 | L23 | W26 | L19* | -   | 2 - 4 |
| 30. M. Mills     | L15 | L26 | W35 | W37 | L11  | L22 | 2 - 4 |
| 31. S. Casey     | L13 | W37 | L17 | L19 | L22  | W36 | 2 - 4 |
| 32. L. Frasier   | -   | W36 | L3  | D18 | L24  | D27 | 2 - 4 |
| 33. D. Toy       | L7  | L24 | BYE | L25 | L26  | W37 | 2 - 4 |
| 34. R. Hall      | L3  | L14 | W22 | D27 | -    | -   | 1½-4½ |
| 35. K. Toomey    | L5  | L28 | L30 | L36 | D37  | BYE | 1½-4½ |
| 36. R. Crawford  | L12 | L32 | L19 | W35 | L28  | L31 | 1 - 5 |
| 37. C. Crawford  | L4  | L31 | L20 | L30 | D35  | L33 | ½- 5½ |

GRIVAINIS WINS CASTLE CHESS CLUB CHAMPIONSHIP

Konstantin Grivainis of Oakland won the 1968 Castle Chess Club title by the fine score of 10-1, thus becoming the second new member in succession to win first place in the annual tournament. Former champions Henry Gross and Valdemars Zemitis were second and third. Last year's champion K. Michael Goodall did not compete. The cross-table:

|                   | 1             | 2             | 3               | 4               | 5               | 6             | 7 | 8             | 9             | 10            | 11            | 12            | Score                            |
|-------------------|---------------|---------------|-----------------|-----------------|-----------------|---------------|---|---------------|---------------|---------------|---------------|---------------|----------------------------------|
| 1. K. Grivainis   | X             | $\frac{1}{2}$ | 1               | 1               | 1               | 1             | 1 | 1             | 1             | $\frac{1}{2}$ | 1             | 1             | 10-1                             |
| 2. H. Gross       | $\frac{1}{2}$ | X             | 0               | 1               | 1               | 1             | 1 | 1             | 1             | 1             | 1             | 1             | 9 $\frac{1}{2}$ -1 $\frac{1}{2}$ |
| 3. V. Zemitis     | 0             | 1             | X               | $\frac{1}{2}$   | $\frac{1}{2}$ * | 1             | 1 | 1             | $\frac{1}{2}$ | 1             | 1             | 1             | 8 $\frac{1}{2}$ -2 $\frac{1}{2}$ |
| 4. L. Talcott     | 0             | 0             | $\frac{1}{2}$   | X               | $\frac{1}{2}$ * | $\frac{1}{2}$ | 1 | 1             | 1             | 1             | $\frac{1}{2}$ | 1             | 7 - 4                            |
| 5. P. Grey        | 0             | 0             | $\frac{1}{2}$ * | $\frac{1}{2}$ * | X               | 1             | 1 | 0             | 1             | $\frac{1}{2}$ | 1             | $\frac{1}{2}$ | 6 - 5                            |
| 6. R. Hultgren    | 0             | 0             | 0               | $\frac{1}{2}$   | 0               | X             | 0 | $\frac{1}{2}$ | 1             | 1             | 1             | 1             | 5 - 6                            |
| 7. P. Traum       | 0             | 0             | 0               | 0               | 0               | 1             | X | 1             | 1             | 1             | 1             | 0             | 5 - 6                            |
| 8. C. Wilson      | 0             | 0             | 0               | 0               | 1               | $\frac{1}{2}$ | 0 | X             | 1             | 1             | 0             | 1             | 4 $\frac{1}{2}$ -6 $\frac{1}{2}$ |
| 9. G. Farly       | 0             | 0             | $\frac{1}{2}$   | 0               | 0               | 0             | 0 | 0             | X             | 1             | 1             | $\frac{1}{2}$ | 3 - 8                            |
| 10. E. Lien       | $\frac{1}{2}$ | 0             | F               | 0               | $\frac{1}{2}$   | 0             | 0 | 0             | 0             | X             | 1             | 1             | 3 - 8                            |
| 11. R. Freeman    | 0             | 0             | 0               | $\frac{1}{2}$   | 0               | 0             | 0 | 1             | 0             | 0             | X             | 1             | 2 $\frac{1}{2}$ -8 $\frac{1}{2}$ |
| 12. S. Van Gelder | 0             | 0             | 0               | 0               | $\frac{1}{2}$   | 0             | 1 | 0             | $\frac{1}{2}$ | 0             | 0             | X             | 2 - 9                            |

#### SOUTHERN CALIFORNIA CHESS LEAGUE TEAM TOURNAMENT

The 1969 Team tournament of the Southern California Chess League got under way in March with 28 teams playing in three divisions. In Division 1, where the Herman Steiner Club is defending champion, the City Terrace team is off to an early lead. In Division 2, the Student and El Segundo teams are in the lead with defending champion Riverside and West Covina No. 1 close behind. In Division 3, where the Atlas team now playing in Division 2 won last year, the Student team is leading.

#### STANDINGS AFTER 4 ROUNDS

##### Division 1

|                  |                                      |                  |                                   |
|------------------|--------------------------------------|------------------|-----------------------------------|
| 1. City Terrace  | 11 - 7                               | 5. Long Beach    | 8 - 3 A                           |
| 2. S. M. Hornets | 10 $\frac{1}{2}$ -9 $\frac{1}{2}$ 4A | 6. Pasadena      | 7 - 8 3A                          |
| 3. Student       | 10 - 95A                             | 7. S. M. Falcons | 7 -14 3A                          |
| 4. Steiner       | 9 - 72A                              | 8. NAR Valley    | 6 $\frac{1}{2}$ -11 $\frac{1}{2}$ |

##### Division 2

|                  |                                    |                  |                                      |
|------------------|------------------------------------|------------------|--------------------------------------|
| 1. El Segundo    | 19 $\frac{1}{2}$ -10 $\frac{1}{2}$ | 6. NAR Valley    | 15-15                                |
| 2. Student       | 19 $\frac{1}{2}$ -10 $\frac{1}{2}$ | 7. West Covina 2 | 14 $\frac{1}{2}$ -14 $\frac{1}{2}$ A |
| 3. West Covina 1 | 18- 12                             | 8. Steiner       | 9 $\frac{1}{2}$ -14 $\frac{1}{2}$    |
| 4. Riverside     | 17 - 7                             | 9. Monterey Park | 9 $\frac{1}{2}$ -20 $\frac{1}{2}$    |
| 5. Atlas         | 17 - 13                            | 10. Pasadena     | 3 $\frac{1}{2}$ -25 $\frac{1}{2}$ A  |

##### Division 3

|               |                                    |                 |                                       |
|---------------|------------------------------------|-----------------|---------------------------------------|
| 1. Student    | 22 - 6 2A                          | 6. Bechtel      | 12 - 17 A                             |
| 2. Pasadena 3 | 17 $\frac{1}{2}$ -12 $\frac{1}{2}$ | 7. City Terrace | 11 $\frac{1}{2}$ -16 $\frac{1}{2}$ 2A |
| 3. Whittier A | 16 $\frac{1}{2}$ -12 $\frac{1}{2}$ | 8. Atlas        | 11 - 13                               |

DIVISION 3 (Continued)

|                  |         |                |        |
|------------------|---------|----------------|--------|
| 4. Pasadena 4    | 15½- 8½ | 9. NAR Valley  | 10 -20 |
| 5. West Covina 3 | 15 - 15 | 10. Whittier B | 10 -20 |

MECHANICS' INSTITUTE WINS SAN FRANCISCO BAY AREA TEAM TOURNAMENT

The Mechanics' Institute team won the 1969 San Francisco Bay Area team tournament over a strong field. The Mechanics defeated the 1968 champions, the University of California, in the first round and afterwards won just about as they pleased. U.C. No. 1, headed by the world junior champion Julio Kaplan of Puerto Rico, was defending its 1968 title, but found the going tough against the Mechanics and also against the Golden Gate-Peninsula team. (a team which drew four matches). The other teams were fairly evenly matched.

SAN FRANCISCO BAY AREA CHESS LEAGUE, 1969

|                      | 1  | 2  | 3  | 4  | 5  | 6    | Score |
|----------------------|----|----|----|----|----|------|-------|
| 1. Mechanics Inst. X | 4  | 3½ | 4½ | 5½ | 4½ | 4½-½ |       |
| 2. U.C. No. 1        | 3  | X  | 3½ | 5  | 4  | 4½   | 3½-1½ |
| 3. G.G. Peninsula    | 3½ | 3½ | X  | F  | 3½ | 3½   | 2 - 3 |
| 4. U.C. No. 2        | 2½ | 2  | 7  | X  | 4  | 2½   | 2 - 3 |
| 5. Kearny St. Irreg. | 1½ | 3  | 3½ | 3  | X  | 4½   | 1½-3½ |
| 6. Castle            | 2½ | 1½ | 3½ | 4½ | 2½ | X    | 1½-3½ |

Three individual prizes of \$10 each are to be awarded. It appears that Jude Acers (4½-½), Steven Spencer (3½-½), Gregory Herlick (3-0), and David Peizer (3½-½) are in the running for the prizes.

A sampling of the matches follows:

| <u>MECHANICS' INSTITUTE 4, U.C.I</u> | <u>3</u>       | <u>G.G. Pen</u>       | <u>3½</u>   | <u>MECH. INST. 3½</u> |           |                |           |
|--------------------------------------|----------------|-----------------------|-------------|-----------------------|-----------|----------------|-----------|
| W. Addison                           | 1 J. Kaplan    | ½                     | G. Ramirez  | 0 J. Acers            | 1         |                |           |
| J. Acers                             | ½ F. Thornally | ½                     | P. Dahl     | 1 R. Wilcox           | 0         |                |           |
| J. Murray                            | 0 S. Spencer   | 1                     | R. Brent    | ½ B. Menas            | ½         |                |           |
| C. Bagby                             | ½ G. Kane      | ½                     | I. Pohl     | ½ R. Hammie           | ½         |                |           |
| R. Wilcox                            | 1 A. Baisley   | 0                     | E. Krestini | 1 D. Clark            | 0         |                |           |
| R. Hoppe                             | 1 A. Benson    | 0                     | A. Lavergne | 0 T. Kurosaki         | 1         |                |           |
| R. Hammie                            | ½ M. Morris    | ½                     | D. Peizer   | 1 B. Kraft            | 0         |                |           |
| <u>U.C. I</u>                        | <u>4</u>       | <u>KEARNY ST. IRR</u> | <u>3</u>    | <u>G.G. Pen.</u>      | <u>3½</u> | <u>U.C. I.</u> | <u>3½</u> |
| J. Kaplan                            | 1 R. Currie    | 0                     | G. Ramirez  | 1 J. Kaplan           | 0         |                |           |
| forfeit                              | 0 E. Pruner    | 1                     | P. Dahl     | 0 F. Thornally        | 1         |                |           |
| F. Thornally                         | 1 A. Bourke    | 0                     | D. Dedinsky | ½ S. Spencer          | ½         |                |           |
| J. Grefe                             | 0 J. Schmitt   | 1                     | R. Brent    | ½ J. Grefe            | ½         |                |           |
| A. Baisley                           | 1 M. Burkett   | 0                     | R. Shean    | 0 A. Baisley          | 1         |                |           |
| M. Morris                            | 0 M. Wilkerson | 1                     | E. Krestini | ½ M. Morris           | ½         |                |           |
| G. Kane                              | 1 K. Bendit    | 0                     | D. Peizer   | 1 M. Goodall          | 0         |                |           |

| KEARNY ST. IRREG 5          | CASTLE                     | 2             | U.C. II    | 4             | KEARNY ST. IRREG 3 |            |   |
|-----------------------------|----------------------------|---------------|------------|---------------|--------------------|------------|---|
| J. Schmitt $\frac{1}{2}$    | R. Burger $\frac{1}{2}$    | $\frac{1}{2}$ | N. Weaver  | 1             | M. Burkett         | 0          |   |
| R. Currie                   | 1                          | V. Zemitis    | 0          | D. Forthoffer | 1                  | J. Schmitt | 0 |
| M. Burkett                  | 1                          | A. Wang       | 0          | A. Vinock     | 0                  | A. Bourke  | 1 |
| A. Bourke $\frac{1}{2}$     | H. Gross $\frac{1}{2}$     | $\frac{1}{2}$ | L. Stevens | 0             | W. Bills           | 1          |   |
| W. Bills $\frac{1}{2}$      | K. Grivainis $\frac{1}{2}$ | $\frac{1}{2}$ | G. Herlick | 1             | H. Bullwinkel      | 0          |   |
| H. Bullwinkel $\frac{1}{2}$ | G. McClain $\frac{1}{2}$   | $\frac{1}{2}$ | M. Andrews | 0             | M. Wilkerson       | 1          |   |
| M. Wilkerson                | 1                          | L. Talcott    | 0          | L. A. Post    | 1                  | K. Bendit  | 0 |

### GAME OF THE MONTH

Twenty-year-old Walter Browne and 16-year-old James Tarjan played a six-game match in Los Angeles late in 1968 and failed to answer the question "who is better?". Browne and Tarjan, the highest-ranking juniors in the U.S., play forceful chess in the Fischer manner. Browne is a self-styled chess professional who challenges everybody, everywhere, to 5-minute chess for money. Tarjan, a psychology student, has a calm and mature attitude. Yet both play KP openings leading to sharp tactics and neither one seems to fear anything.

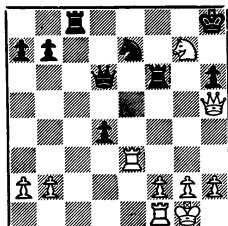
The first game was a 32-move draw, a Ruy Lopez Schliemann Deferred. Browne having the White pieces. The second was a 23-move draw, a Sicilian Defense. The third and fourth games were won by Black, the third in a surprise finish, the fourth as the result of an opening trap. The fifth and sixth games were drawn in 59 moves and 41 moves. The final score: 3-3. Here is the third game:

#### Game No. 1075 French

| White  | Black            |   |       |
|--|------------------|---|-------|
| <u>W. Browne</u>   | <u>J. Tarjan</u> |   |       |
| 1. P-K4  |                  | 11. PxP   | QxP   |
| This move may have cost Browne the game, for he arrived 23 minutes late. |                  | 12. Kt-Kt3  | B-Q3  |
| 1. . . .   | P-K3             | 13. B-KKt5  | Q-B2  |
| 2. P-Q4  | P-Q4             | 14. B-R4  | 0-0   |
| 3. Kt-Q2   | Kt-QB3           | 15. B-Q3  | P-KR3 |
| 4. KKt-B3  | Kt-B3            | 16. Q-K2  | P-K4  |
| 5. P-K5  | Kt-Q2            | 17. B-Kt3   | Q-B3  |
| 6. B-Q3  | Kt-Kt5           | 18. PxP   | Kt2xP |
| 7. B-K2  | P-QB4            | 19. KtxKt   | KtxKt |
| 8. P-QB3   | Kt-QB3           | 20. QR-K1   | Kt-B3 |
| 9. 0-0   | PxP              | Rejecting 20...KtxB; 21. QxKt, Bx B; 22. QxPch, K-R1; 23. BPxB, Q-Kt3 ch; 24. K-R1, B-K3 with a good position. If 23. RPxB!, QxKtP; 24. QxPch, K-R1, Black has a defensible game. |       |
| 10. PxP  | P-B3             | 21. Q-R5!   | Kt-K2 |

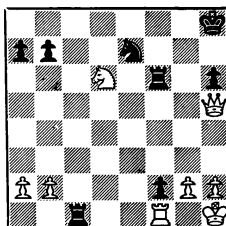
22. R-K3! B-KB4  
 23. QBxB QxB  
 24. Kt-Q4 BxB  
 25. RxB QR-B1  
 26. R-K3 K-R1  
 27. Kt-K6 R-KB3  
 27...R-KKt1; 28. Kt-Kt5, Q-Kt3 and Black's position can be defended, although White clearly stands better and has many options.

28. Kt x P! P-Q5?!  
 28...KxKt; 29. RxKtch, QxR; 30. Q-Kt4ch, R-Kt3; 31. QxR and White should win, although there are many problems. The text move sets a fabulous trap!



29. Kt-K8?  
 29. R-KKt3 wins, but only with the very finest play and no time pressure. White falls victim to a ten-move Queening combination. A tremendous finish!

29. ... P x R!!  
 30. Kt x Q P x Pch  
 31. K-R1 R-B8!



32. Q-K8ch Kt-Kt1  
 33. Q-K2 RxRch  
 34. QxR RxKt  
 35. P-KKt3 R-KB3  
 36. K-Kt2 Kt-K2  
 37. K-R3 Kt-Q4  
 38. P-QKt3 Kt-K6

RESIGNS

GSCF QUESTIONNAIRE - PART A (NORTH-SOUTH TEAM MATCH)

There were 89 replies to the questionnaire mailed with the Nov-Dec issue of the Reporter. Section A of the questionnaire dealt with the annual North vs. South Team Match. Reports on Sections B (dealing with the California Open) and C (dealing with the State Championship) will appear in subsequent issues.

The questions concerning the North-South Match were: Are you satisfied (with the reservation that the Match could be improved), or dissatisfied (because of location, accommodations, or program), plus the direct question of preference between Bakersfield or San Luis Obispo. We also asked if the person answering had played in a Match or would if his objections were overcome.

There were 35 "satisfied", 37 "dissatisfied", and 17 non-committal answers. Of the 37 "dissatisfied" replies, 20 were because of location (plus one "satisfied" reply), 7 because of the program, 5 because there was not enough advertising and 6 "because it was too far to travel for one game". There were 3 persons who suggested playing 2, 3 or 4 games. Twenty-five persons preferred San Luis Obispo and 9



preferred Bakersfield. Six persons mentioned playing the match between rounds of a tournament; five said "no" and one thought it was a good idea.

Less than half of the answers came from persons who had previously played in a match (43 of 89). On the whole, these persons did not have particularly different views than the persons who had not played in a match. Of the 43, 22 were satisfied and 19 dissatisfied, with  
 (...continued on pg.106)

GAMES

S.F. Bay Area Chess League  
Game No. 1076 - Ruy Lopez

|                   |                 |
|-------------------|-----------------|
| White             | Black           |
| <u>G. Ramirez</u> | <u>J. Acers</u> |
| 1. P-K4           | P-K4            |
| 2. Kt-KB3         | Kt-QB3          |
| 3. B-Kt5          | P-QR3           |
| 4. B-R4           | Kt-B3           |
| 5. O-O            | KtxP            |
| 6. P-Q4           | P-QKt4          |
| 7. B-Kt3          | PxP             |

A prepared variation 9 years in the making! The text has been mentioned 3 times since Tarrasch-A. Burn 1899 London and has been poorly analyzed. I had hoped to play it against Fischer or Spassky but, alas, lost patience.

|           |      |
|-----------|------|
| 8. R-K1   | P-Q4 |
| 9. Kt-Kt5 |      |

Enterprising but very risky. I rejected 9...B-K2;10. KtxBP, Kx Kt; 11.Q-R5ch, Resigns in one second flat.

|           |      |
|-----------|------|
| 9...      | B-K3 |
| 10. KtxKt | PxKt |
| 11. BxB   |      |

White is already lost but 11.RxP is slightly better.

|           |       |
|-----------|-------|
| 11. ...   | PxB   |
| 12. RxP   | Q-Q4  |
| 13. Kt-B3 | Q-KB4 |

13...Q-QB4?! is unclear.

|          |       |
|----------|-------|
| 14. R-B4 | Q-Kt3 |
| 15. Q-B3 | P-K4  |

The point. Consolidation of a

pawn plus with gain of time and instituting a pawn phalanx.

|            |      |
|------------|------|
| 16. R-KKt4 | Q-B3 |
| 17. QxQ    | PxQ  |
| 18. Kt-Q5  |      |

Loses a second pawn or a full piece.

|           |      |
|-----------|------|
| 18. ...   | K-B2 |
| 19. P-QR4 |      |

On my 11th move, I saw that if now 19.KtxQBP, R-R2; 20.Kt-Q5,K-K3; 21. Kt-Kt6, R-Kt2; 22. Kt-B8, K-Q2 and wins.

|            |      |
|------------|------|
| 19. ...    | B-Q3 |
| 20. P-QKt3 |      |

or 20. P-QB3,K-K3.

|          |         |
|----------|---------|
| 20. ...  | P-Kt5   |
| 21. B-R6 | KR-KKt1 |

Better than 21...K-K3;22.B-Kt7,Kx Kt; 23. BxR, RxB as there is no defense to the maneuver Kt-QKt1-Q 2 and P-QB3 winning a full piece. Several friends were very upset that I had failed to play 21... K-K3. I felt rather strange knowing that the game was over despite whispers from the peanut gallery.

|          |       |
|----------|-------|
| 22. RxR  | RxR   |
| 23. R-K1 | P-QR4 |

There is no hurry to win the piece. Black sets a vicious trap while strengthening B4.

|           |        |
|-----------|--------|
| 24. K-B1! | Kt-Kt1 |
| 25. P-KB4 | Kt-Q2  |
| 26. P-KR3 | P-B3   |
| 27. KtxBP | KxKt   |
| 28. PxPch | KtxP   |

29. R-K4 P-QB4  
 30. P-KKt4 K-Kt3  
 31. B-B4 R-KB1  
 32. K-K2 R-K1  
 33. K-B2 KtxPch  
 34. K-B3 RxR  
 35. KxR Kt-B7ch  
 RESIGNS

Game No. 1078 - Sicilian

| White            |  | Black             |
|------------------|--|-------------------|
| <u>R. Burger</u> |  | <u>G. Ramirez</u> |
| 1. P-K4          |  | P-QB4             |
| 2. Kt-KB3        |  | P-Q3              |
| 3. P-Q4          |  | PxP               |
| 4. KtxP          |  | Kt-KB3            |
| 5. Kt-QB3        |  | P-QR3             |
| 6. B-Q3          |  | P-K4              |
| 7. Kt-Kt3        |  | B-K3              |
| 8. B-KKt5        |  | B-K2              |
| 9. BxKt          |  | BxB               |
| 10. O-O          |  | O-O               |
| 11. Q-K2         |  | Q-B2              |
| 12. Kt-Q2        |  | P-QKt4            |
| 13. Kt-Q5        |  | BxKt              |
| 14. PxB          |  | P-Kt3             |
| 15. K-R1         |  | Kt-Q2             |
| 16. P-QR4        |  | PxP               |
| 17. RxP          |  | B-Kt2             |
| 18. R-B4         |  | Q-Kt1             |
| 19. R-B6         |  | Kt-Kt3            |
| 20. P-QB4        |  | P-B4              |

Game No. 1077 - Sicilian

| White            | Black               |
|------------------|---------------------|
| <u>R. Burger</u> | <u>F. Thornally</u> |
| 1. P-K4          | P-QB4               |
| 2. Kt-KB3        | P-Q3                |
| 3. P-Q4          | PxP                 |
| 4. KtxP          | Kt-KB3              |
| 5. Kt-QB3        | Kt-B3               |
| 6. P-B4          | P-K3                |
| 7. KtxKt         | PxKt                |
| 8. B-Q3          | Q-Kt3               |
| 9. P-QR4         | P-QR4               |
| 10. Q-K2         | B-K2                |
| 11. P-K5         | Kt-Q4               |
| 12. KtxKt        | BPxKt               |
| 13. B-Kt5ch      | B-Q2                |
| 14. BxBch        | KxB                 |
| 15. R-R3         | PxP                 |
| 16. R-QKt3       | B-Kt5ch             |
| 17. P-Kt3        | Q-B3                |
| 18. PxP          | Q-B5                |
| 19. PxB          | QxR                 |

White plays to win or lose, because a draw loses the match.

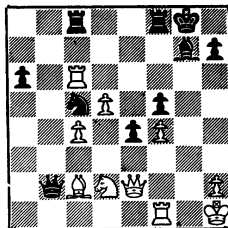
|            |       |
|------------|-------|
| 21. P-KKt4 | P-K5  |
| 22. B-B2   | Kt-Q2 |
| 23. PxP    | PxP   |
| 24. P-B4   | QxP   |
| 25. RxP    | Kt-B4 |
| 26. R-B6   | QR-B1 |

Thornally later suggested QxBch, 29.26...QxB, 27.RxKt, B-B6; 28. K-B2, Q-B5 (instead of Q-B5ch, 30. R-Kt1ch, K-R1; 29. R-B7 leaves R-B3, Q-Q5ch; 31. K-Kt3 with a doubleBlack helpless against RxPch. threat), but White wins in short order with simply 30.QxQ, Px Q 31. R-QB3, PxP; 32. R-Q1ch! etc. Again the KR can't get out fast enough.

20. Q-Kt5ch K-B2  
 21. O-O P-B3  
 22. PxP

Faster than 22. B-B4

22. ... QxP4  
 23. B-B4ch K-Q1  
 24. PxP Q-Q5ch  
 25. K-R1 RESIGNS



27. RxKt RxR  
 28. KtxP PxB  
 29. QxP R-KB2

Black can easily make such mistakes as 29...KR-B1; 30. Q-K6ch, K-B1; 31.BxP,Q-B3; 32. Q-Kt8ch, K-K2; 33.R-K1ch,K-Q2;34. B-B5ch! and mate to follow. After the best defense, R-Q1, White has winning chances with 30.P-Q6, etc.

30. R-QKt1 Q-B6

If 30...Q-Q5; 31. QxPch, K-B1; 32. R-Kt8ch, 33.Q-Kt8! and early mate. The White B is a stalwart of defense.

31. QxPch K-B1  
 32. R-Kt8ch K-K2  
 33. Q-K4ch K-Q3  
 34. Q-K6ch K-B2  
 35. Q-B8ch K-Q3  
 36. Q-Q8ch RESIGNS

Game No. 1079 - Sicilian

| White            | Black          |
|------------------|----------------|
| <u>R. Wilcox</u> | <u>P. Dahl</u> |
| 1. P-K4          | P-QB4          |
| 2. Kt-KB3        | P-Q3           |
| 3. P-Q4          | PxP            |
| 4. KtxP          | Kt-KB3         |
| 5. Kt-QB3        | P-KKt3         |
| 6. B-K3          | B-Kt2          |
| 7. P-B3          | Kt-B3          |
| 8. B-QB4         | 0-0            |
| 9. Q-Q2          | B-Q2           |
| 10. P-KR4        | Q-R4           |
| 11. B-Kt3        | KR-B1          |
| 12. P-R5         | KtxP           |
| 13. KtxKt        | RxKt?          |

I overlooked the game continuation. Apparently, 13...BxKt is necessary There could follow 14.P-Kt4,Kt-B3 15.0-0-0, P-QKt4;16. B-R6,P-Kt5; 17. Kt-Q5, BxKt; 18. BxB(5), QR-Kt1; 19. BxB, KxB; 20.Q-R6ch,K-Kt1; 21. K-Kt1 (cannot allow P-Kt6!) and

it is unclear whether White's King side attack is worth a pawn. (21. P-Kt5!, P-Kt6; 22. BxP wins-JA) (Notes by Peter Dahl)

14. Kt-Q5! QxQ  
 14...Q-Q1?; 15.P-Kt4, Kt-B3; 16. Q-R2!

15. KxQ K-B1  
 16. B-R4 Kt-Kt6

Grasping at straws. Hopes for 17. RxP, Kt-R4.

17. KR-Q1 R-Kt1  
 18. BxR PxB  
 19. Kt-B3 RxP  
 20. KR-QKt1 RxR  
 21. RxR P-KB4

desperation - hoping for 22.B-B4? BxKtch.

22. PxP KtxP  
 23. BxP

Expects to win using the QRP.

23. ... Kt-R5  
 24. R-Kt7 B-K3  
 25. P-R4 KtxKtP  
 26. P-R5 B-B5  
 27. R-Kt4??

The turning point! 27.B-B2 should win.

27. ... B-R3ch  
 28. K-Q1 P-B4!!  
 29. R-Kt8ch

29. RxB, Kt-K6ch;30. K-K2,KtxR;31. P-R6, K-K1 and Black makes it just in time, ie. 32.B-Kt8,K-Q2; 33. P-R7,Kt-Kt3, 34. Kt-Q5, Kt-R1; 35. Kt-B7, Kt-Kt3; 36. P-R8 (Q), KtxQ; 37. KtxKt, K-B1 and wins.

29. ... K-B2  
 30. Kt-Kt5 Kt-K6ch  
 31. K-B1 Kt-Q4 dis ch  
 32. K-Kt2 Kt-Kt5  
 33. Kt-B7?

33. R-Kt7 is necessary.  
 33. ... Kt-B3  
 34. R-QR8 KtxP

35. BxP                    Kt-B3                    DAVIS TOURNAMENT, 1968  
 36. B-B2                    B-K7  
 37. R-R3                    Kt-K4                    Game No. 1081 - Colle  
 38. B-Kt3?

White is lost anyway. 38...BxP follows if White avoids the fork.

38. ...                    Kt-B5ch

RESIGNS

BATON ROUGE OPEN, 1969

Game No. 1080 - Nimzovich

| White            | Black             |
|------------------|-------------------|
| <u>W. Porter</u> | <u>R. Brieger</u> |
| 1. P-K4          | Kt-QB3            |
| 2. P-Q4          | P-Q4              |
| 3. P-K5          | B-B4              |
| 4. P-KB4         | P-K3              |
| 5. Kt-KB3        | P-KR4             |
| 6. P-QKt3        | P-QR3             |
| 7. P-QR4?        | Kt-R3             |
| 8. P-QB4?        | B-Kt5ch           |
| 9. K-B2          | PxP               |
| 10. PxP          | Kt-Kt5ch          |
| 11. K-Kt1        | KtxQP             |
| 12. KtxKt        | B-K8!!            |

12...B-QB7!!! wins in remarkable problem like fashion. A fantastic miniature.

RESIGNS

| White         | Black                   |
|---------------|-------------------------|
| <u>G. Lee</u> | <u>S. von Oettingen</u> |
| 1. P-Q4       | P-Q4                    |
| 2. Kt-KB3     | P-QB4                   |
| 3. P-B3       | Kt-QB3                  |
| 4. P-KKt3     | B-Kt5                   |
| 5. B-Kt2      | P-K3                    |
| 6. O-O        | P-KR4                   |
| 7. QKt-Q2     | PxP                     |
| 8. KtxP       | KtxKt                   |
| 9. PxKt       | KKt-K2                  |
| 10. P-B3      | B-B4                    |
| 11. K-R1      | P-R5                    |
| 12. P-K4      | P-R6                    |
| 13. PxB       | PxBch                   |
| 14. KxP       | KtxP                    |
| 15. Kt-Kt3    | B-Q3                    |
| 16. Q-Q3?     | RxPch!                  |
| 17. K-Kt1     | BxP                     |
| 18. Kt-B5     | Q-R5                    |
| 19. Q-Kt5ch   | K-B1                    |
| 20. KtxPch    | PxKt                    |

RESIGNS

BOOK REVIEW

by Jude Acers

My 60 Memorable Games by Bobby Fischer \$6.95 Simon & Schuster, N.Y. 1969. 384 pages, index of openings and opponents. Introductions to all games by Larry Evans.

The volume is a masterpiece in our time. It ranks with the game collections of Tarrasch and Alekhine in the category of objectivity and scope. It surpasses any English games collection issued to this date and, along with Botvinnik's collected games, is of primary interest to the chess student as nothing else printed since World War II.

Included are three of Fischer's losses and eight incredible, hair-raising draws. Contrary to rumor and jealous tongues, Larry Evans did not write the book for Fischer. Evan's style and wording appear

all throughout the text of the games but analytical work and phrasing ("I didn't see it!," "the sealed move seals Black's fate," "I still couldn't believe it! I had to play on to make sure I was losing a piece!") are clearly done by the phenominal analyst Fischer. Anyone who knows Fischer will tell you that he would never allow ghost writing.

Extremely interesting is the truth about some of Fisher's most sensational games-his wonderful analysis proving that Botvinnik's drawn ending was actually lost, and (a vindication to this reviewer who was laughed at for suggesting 20. Q-KB4! in Fischer-Geller, Skopje 1967) Fischer proves a crushing win and justifies his opening play and pre-game preparation. There is distinct evidence that Fischer is the most thoroughly prepared professional in the world analytically. Emotionally prepared? That is cause for debate. But the research, love for chess study, and accuracy under fire are all funnelled to the reader through Bobby Fischer's pen.

The volume is actually priced reasonably. It is exciting, interesting, instructive and what one would expect from a first-rate grandmaster who has paid the price of specialization in our world. It is in short an absolutely vital book and to be purchased by the quickest possible means. We suggest that you do anything short of holding up a bookstore or robbing your grandmother to obtain it.

There are a few technical and personal notes I should mention at this point. First, designer Andor Braun erred in planning the annotative separation of the comments made by Fischer on moves actually played. As one of our leading master pointed out, the deep study of some games produces problems, as the analysis is not presented in a printed form suitable for tired eyes. I scoffed at this criticism upon casual examination of the book, but after playing through the entire text, I can confirm this optical effect. Second, we note that our own John Blackstone is mentioned in the notes to Game 17, Fischer-tal. In a Davis, California, clock exhibition in 1964 Blackstone achieved a quickly winning position against Fischer's mechanical B-QB4 anti-Sicilian system. Third, we feel that the author's integrity is carefully shown by inclusion of full credit on all quotations or republished analysis throughout. He is indeed as Larry Evans told us last year, "always very careful to give credit."

We should mention very special highlights in the book. Notable is the unbelievable Fischer-Walther game (p.67) where Fischer threw away the win as shown by Swiss end game composer Fontana. Fischer was a clear two united passed pawns to the good with Bishops of opposite colors. Other points of extraordinary interest include a

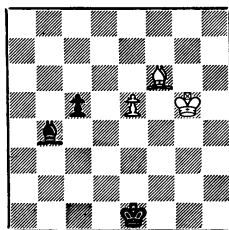
super secret win which Olafsson and Fischer discovered Gligorich could have executed vs. Fischer. Fischer stayed up all night analyzing in disbelief "and incidently learning a lot about Rook and Pawn end games" - page 85. Annotative masterpieces are: No. 39, Botvinnik-Fischer, Varna Olympics 1962; No. 40, Fischer-Najdorf, Varna Olympics 1962; No. 44, Fischer-Fine, N.Y. 1963, skittle game; No. 45, Fischer-Bisguier, N.Y. State Championship 1963; No. 56, Fischer-Gligorich, Havana 1966; No. 58, Fischer-Geller, Skopje 1967; and No. 60, Fischer-Stein, Sousse 1967.

The tragedy of Fischer everywhere underscores the pages. Why cannot he compete day in and day out against the world's leading players? His withdrawal from the Olympiad and Sousse 1967 are not those of a coward - he is simply deeply interested in chess and is an occasional player! We must all learn to accept this and look elsewhere for a six-player U.S. team. Fischer's games are to be studied by those six players of tomorrow. We suggest that this wonderful book is the beginning milestone in American quality chess publication and that a better American chess scene is its natural, inevitable consequence. His critics, including this reviewer, were wrong. Better an inactive Robert Fischer than no Robert Fischer. He is one of the most important analysts of all time.

#### FOURTH CORRECTION (TROITSKY-SELESNIEFF-CHERON)

William G. Addison has notified us that the article in our last issue concerning a B and P ending which has had three corrections since 1908 was Jude Acers' work and not his. Addison had given Acers the information, but did not do any of the writing and was not a co-author. We apologize to Bill. Acers was trying to give Bill credit for the idea but erred in submitting the article under a joint authorship. (There was another article too (Vol XVIII, No. 1) about an R and P ending which also was given as a joint authorship; this, too, was by Acers alone).

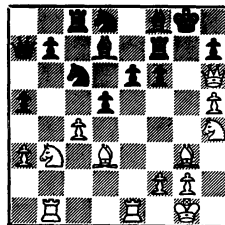
In the diagram opposite, #1194 of Cheron's Handbuch der Endspiele, Vol. 2, Acers made an inspired diversion from a line furnished by Addison (which was sent to Gerald Abrahams by an obscure "club player.") The given solution:  
1. B-K7, B-R4; 2. BxP, B-Q1ch; 3. K-B5!; K-K7;  
4. P-K6, K-Q6; 5. B-R3, K-B5; 6. B-Kt2, K-Q4;  
7. B-B6 and Queens. However, Black has a draw  
with 6...B-K2! The correct solution as given  
by Addison: 1. B-K7, B-R4; 2. BxP. B-Q1ch; 3.



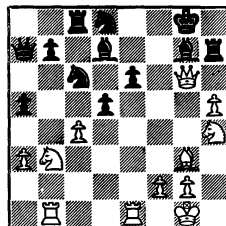
K-Kt6, K-K7; 4. P-K6 (the point of variance with Cheron's analysis), K-Q6; 5. B-B8!, K-K5; 6. B-Kt7, B-K2; 7. K-B7, B-Kt5; 8. B-B8 and wins.

ANALYSIS: LAST MONTH'S GAME OF THE MONTH

David E. Welsh writes us concerning our Games Editor's notes to the last Game of the Month, particularly the two positions given here. In the diagram opposite, we called 23. BxPch "a totally unsound sacrifice in a lost position." David does not agree, writing that not only there is no clear refutation of the sacrifice that he can find but also he could have played 23. Q-Q2 with the better game. We think that after 23. Q-Q2 Black will find good squares for his pieces with 23... P-R5 followed by ...BxP or ...Kt-Q5.



The unsoundness of 23. BxPch seems to us to be best demonstrated by the second diagram, after 23. BxPch, RxB; 24. QxP, B-Kt2, 25. Q-Kt6. Here, Black made the pointless move 25...Kt-B2. Black should not have allowed 26. PxP. If he had played 25...PxP instead he would have had the superior game.



Upon reflection, the only change we might make in the original notes would be to mention 25... PxP (plus, of course, giving the player's correct name, Welsh instead of Welch.)

(..continued from pg. 100)

two non-committal. It seems that the main difference is that fewer failed to have an opinion (2 vs. 15). When we examine the returns geographically we find important differences. The S.F. Bay Area (30 replies) had 18 veterans of the match, 11 were satisfied and 14 dissatisfied and voted 15-1 for San Luis Obispo over Bakersfield. Southern California (also 30 replies) had 10 veterans; 8 were satisfied and 13 were dissatisfied; 4 preferred Bakersfield and 6 San Luis Obispo. Central California (29 replies) had 15 veterans; 16 were satisfied and 10 dissatisfied; Bakersfield and San Luis Obispo were tied 4-4.

Our conclusions: We'd like a larger sampling. On the answers received, a minority of the membership wants the Match continued, and in the San Luis Obispo area rather than the Valley. Whether or not we can return to the "palmy days" of the Match, remains to be seen.





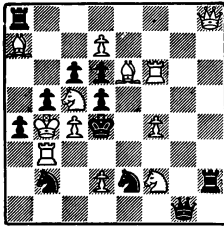
TASKS:THE A. J. FINK MEMORIAL, 1967-68

No. 283

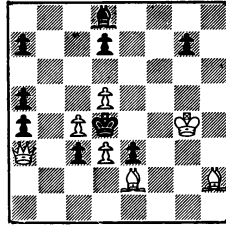
No. 284

J. Buchwald, Special Prize, Best Set

A. J. Fink Memorial Tourney, 1967-68



Mate in 2



Mate in 3

The awards in the A. J. Fink Memorial Tourney, 1967-68, were:

TWO-MOVERS: First, E. Visserman (Netherlands). Second, J. Buchwald (U.S.A.) Third, H. Hermanson (Sweden). Fourth, W. Barclay (U.S.A.) 1st and 2nd Honorable Mentions, A. Ellerman (Argentina). 3rd and 4th Honorable Mentions, L. Mangalis (Australia). Commended: (1) F. A. Dawes (England); (2) M. Parthasarathy (India); (3) T. Garai (Romania); (4) S. Seider (Israel).

THREE MOVERS: First, V. Bartolovic (Jugoslavia). Second, L. Mangalis (Australia). 1st Honorable Mention, M. Marysko (Czechoslovakia). Second Honorable Mention, P. Vatarescu (Romania). Commended: (1) A. Johandl (Austria); (2) P. Vatarescu and S. Seider; (3) J. Buchwald.

BEST SET: J. Buchwald (U.S.A.) for the set of prize winners mentioned above. This special prize was awarded as a recognition of Fink's versatility in both phases of composition (not to mention over-the-board prowess). It is fitting that this country's most formidable composer achieved this award.

Judges for the tourney were Comins Mansfield (2 movers), Walter Jacobs (U.S.A.) (3 movers) and R.C.O. Matthews (best set). H. Albrecht (West Germany) checked the two-movers for anticipations. Edgar Holladay (U.S.A.) arranged for judges and the conduct of the tourney. Judges were provided with unmarked diagrams to avoid any possible conflict of interest. The problem editor of The Reporter assumes all responsibility for the unfortunate delay in announcing these results.