

THE CALIFORNIA CHESS REPORTER

Vol. VII, Nos. 7-8 \$2.00 per year March-April, 1958

The California Chess Reporter - Ten numbers per year
Official Organ of the California State Chess Federation
Editor: Guthrie McClain, 244 Kearny Street, San Francisco 8
Associate Editors: Dr. Mark W. Eudey, Berkeley; Neil T. Austin,
Sacramento; George Goehler, Irving Rivise, Los Angeles
Task Editor: Dr. H. J. Ralston
Games Editor: N. E. Falconer, Lafayette
Guest Annotator: Imre König, San Francisco
New York Correspondent: Robert E. Burger

CONTENTS

| | | | |
|-----------------------------------|---------|-----------------------------|---------|
| Golden Gate Club Chp..... | 110 | Redding High School Chess.. | 119 |
| Southern Calif. League... 111-112 | | Imre König Simultaneous.... | 119 |
| Central Calif. League..... | 113 | Game of the Month..... | 120-121 |
| Central Calif. Ind. Chp..... | 114 | News and Correspondence | 122-125 |
| Fresno Chess Club..... | 114 | Games..... | 126-129 |
| S.F. Bay Area League..... | 115-118 | Leaves of Chess..... | 130 |
| North-South Warmup Matches... 118 | | Operation Shoestring..... | 131 |
| Fairfax Wins L.A. High Title. 119 | | Reporter Tasks..... | 131-132 |

U.C.L.A. SOUTHERN CALIFORNIA CHAMPIONS

The four-man team from U.C.L.A. won the 1958 Class I title, 4-2 and $15\frac{1}{2}$ points against Santa Monica's 4-2 and 15 points. The Herman Steiner club was third, $3\frac{1}{2}$ - $2\frac{1}{2}$ and 13 points.

SACRAMENTO WINS CENTRAL CALIFORNIA TEAM TITLE

The resurgent Sacramento team upset the powerful San Jose team in the final round of the Central California Chess League by a 5-3 score. Sacramento scored $5\frac{1}{2}$ - $\frac{1}{2}$ in matches, with San Jose finishing second with 5-1. Pittsburg and Fresno followed, 4-2 and $3\frac{1}{2}$ - $2\frac{1}{2}$, respectively.

ADDISON WINS GOLDEN GATE CHAMPIONSHIP

William G. Addison of San Francisco scored 11-1 to win the strong Golden Gate club tournament of 1957-58. It was Addison's third win in a row. In second place was Henry Gross of San Francisco. Gross tied with Larry Ledgerwood of Oakland and Charles Bagby of San Francisco with 9-3 scores, but won out on tie-breaking points. The tournament was a 12-round Swiss, completed in March. Spencer H. Van Gelder directed.

GOLDEN GATE CHESS CLUB CHAMPIONSHIP, 1957-58

Bill Addison added another title to his collection as he swept through the best of a strong 25-man field at San Francisco's Hotel Broadmoor (and the Somerton, where the tournament started) by the convincing score of 11-1. Addison gave up draws to Henry Gross and Charles Bagby and won nine games outright.

Club president Henry Gross was a clear second until the last round, when he was upset by Dave Nieder; but Gross won second place

| | 1 | 2 | 3 | 4 | 5 | 6 | 7 | 8 | 9 | 10 | 11 | 12 | Score | Median |
|-----------------|------|------|------|------|------|------|------|------|------|------|------|------|-------|--------|
| 1. W Addison | W6 | W1.4 | D4 | W3 | D2 | W5 | W6 | W7 | W1.2 | W1.1 | W1.0 | W1.7 | 11-1 | 53 |
| 2. H Gross | D1.1 | W1.5 | W1.0 | W1.2 | D1 | W7 | D3 | D4 | W5 | W1.4 | W8 | L9 | 9-3 | 53 |
| 3. L Ledgerwood | W8 | W1.9 | W7 | L1 | D5 | W1.0 | D2 | W1.4 | D4 | D1.5 | W6 | W1.2 | 9-3 | 52½ |
| 4. C Bagby | W1.3 | W1.2 | D1 | L5 | D6 | W2.0 | W1.5 | D2 | D3 | W7 | W1.4 | W1.1 | 9-3 | 51½ |
| 5. E Krestini | D1.8 | W9 | W2.4 | W4 | D3 | L1 | D1.4 | W6 | L2 | D8 | W1.5 | D1.0 | 7½-4½ | 54½ |
| 6. H Rosenbaum | L1 | W2.2 | W1.1 | D1.9 | D4 | L8 | W1.0 | L5 | W2.4 | D1.2 | L3 | W1.5 | 6½-5½ | 51 |
| 7. C Capps | W1.7 | D1.0 | L3 | W9 | W1.5 | L2 | W1.6 | L1 | W2.0 | L4 | L1.2 | W1.4 | 6½-5½ | 51 |
| 8. R Freeman | L3 | W2.5 | W1.7 | D2.0 | D1.0 | W6 | L1 | W2.4 | L1.4 | D5 | L2 | W1.8 | 6½-5½ | 49 |
| 9. D Nieder | D2.0 | L5 | W2.3 | L7 | W2.5 | L1.6 | L1.1 | L1.3 | W2.2 | bye | W2.1 | W2 | 6½-5½ | 34½ |
| 10. C Wilson | W1.6 | D7 | L2 | W2.4 | D8 | L3 | L6 | D2.3 | W1.7 | W1.3 | L1 | D5 | 6-6 | 50½ |
| 11. R Barringer | D2 | D2.1 | L6 | W1.7 | L1.4 | D1.3 | W9 | D2.0 | W1.6 | L1 | W2.2 | L4 | 6-6 | 48 |
| 12. J Kalisch | W2.5 | L4 | W2.1 | L2 | D2.4 | W1.8 | L2.0 | W1.9 | L1 | D6 | W7 | L3 | 6-6 | 48 |
| 13. H Edelstein | I.4 | W1.6 | L2.0 | L2.5 | W1.7 | D1.1 | D1.8 | W9 | L1.5 | L1.0 | bye | W2.1 | 6-6 | 41 |
| 14. D Belmont | W2.3 | L1 | L1.5 | W1.8 | W1.1 | W1.9 | D5 | L3 | W8 | L2 | L4 | L7 | 5½-6½ | 53½ |
| 15. Dr K Colby | D2.4 | L2 | W1.4 | W2.1 | L7 | W2.2 | L4 | D1.6 | W1.3 | D3 | L5 | L6 | 5½-6½ | 48½ |
| 16. E Yagie | L1.0 | L1.3 | D2.2 | bye | W2.1 | W9 | L7 | D1.5 | L1.1 | D2.3 | L1.7 | W2.5 | 5½-6½ | 41½ |
| 17. SHVangelder | L7 | W2.3 | L8 | L1.1 | L1.3 | bye | D2.1 | W1.8 | L1.0 | W2.2 | W1.6 | L1 | 5½-6½ | 41½ |
| 18. G Lutz | D5 | D2.0 | L1.9 | L1.4 | W2.2 | L1.2 | D1.3 | L1.7 | bye | W2.5 | W2.3 | L8 | 5½-6½ | 37½ |
| 19. C Huneke | bye | L3 | W1.8 | D6 | D2.0 | L1.4 | L2.4 | L1.2 | D2.3 | D2.1 | W2.5 | L2.2 | 5-7 | 39 |
| 20. W Beach | D9 | D1.8 | W1.3 | D8 | D1.9 | I.4 | W1.2 | D1.1 | L7 | - | - | - | 4½-7½ | 48½ |
| 21. N Nielsen | W2.2 | D1.1 | L1.2 | L1.5 | L1.6 | L2.3 | D1.7 | bye | W2.5 | D1.9 | L9 | L1.3 | 4½-7½ | 40½ |
| 22. Dr B Gross | L2.1 | L6 | D1.6 | W2.3 | L1.8 | L1.5 | bye | W2.5 | L9 | L1.7 | L1.1 | W1.9 | 4½-7½ | 39½ |
| 23. H King | L1.4 | L1.7 | L9 | L2.2 | bye | W2.1 | W2.5 | D1.0 | D1.9 | L1.6 | L1.1 | - | 4½-7½ | 35½ |
| 24. E Lien | D1.5 | bye | L5 | L1.0 | D1.2 | W2.5 | W1.9 | L8 | L6 | - | - | - | 4-8 | 44 |
| 25. B Wong | L1.2 | L8 | bye | W1.3 | L9 | L2.4 | L2.3 | L2.2 | L2.1 | L1.8 | L1.9 | L1.6 | 2-10 | 38½ |

anyhow by virtue of tie-breaking points. Larry Ledgerwood and Charles Bagby finished in that order after the tie-breaking points were figured, although both had 9-3 scores, the same as Gross.

Eugene Krestini was all alone in fifth place, 7½-4½ - a respectful distance behind Gross, Ledgerwood and Bagby (and weren't they a respectful distance behind Addison?) Herb Rosenbaum, Russell Freeman, Carroll Capps and Dave Nieder tied for the next spot,

9½-5½.

SOUTHERN CALIFORNIA CHESS LEAGUE

U.C.L.A. took the honors in Class I in a tight race over Santa Monica and Herman Steiner. The Uclans ran up an early 4-0 score and then lost the last two matches; however, under the total score tie-breaking rules U.C.L.A. beat out Santa Monica by half a point.

CLASS I, March-April, 1958ROUND 1

| | | | | |
|-----------------------------------|-------------|---|------------|---|
| <u>Steiner 3½, Santa Monica ½</u> | | | | |
| 1 | J Moskowitz | 1 | S Almgren | 0 |
| 2 | I Rivise | ½ | R Martin | ½ |
| 3 | H Borochow | 1 | H Abel | 0 |
| 4 | S Mazner | 1 | G VanDeene | 0 |

Inglewood 1, U.C.L.A. 3

| | | | | |
|---|-----------|---|------------|---|
| 1 | J Kliger | 0 | R Cross | 1 |
| 2 | J Thomas | 0 | R Hamman | 1 |
| 3 | L Johnson | 1 | D Hestenes | 0 |
| 4 | H Zander | 0 | G Soules | 1 |

ROUND 3

| | | | | |
|------------------------------------|------------|---|------------|---|
| <u>Inglewood 1, Santa Monica 3</u> | | | | |
| 1 | J Kliger | ½ | S Almgren | ½ |
| 2 | Forfeit | 0 | R Martin | 1 |
| 3 | Forfeit | 0 | G VanDeene | 1 |
| 4 | N Davidson | ½ | E Book | ½ |

U.C.L.A. 3½, Steiner ½

| | | | | |
|---|------------|---|-------------|---|
| 1 | R Cross | 1 | H Borochow | 0 |
| 2 | R Hamman | 1 | S Sholomson | 0 |
| 3 | D Hestenes | ½ | S Geller | ½ |
| 4 | G Soules | 1 | N Robinson | 0 |

ROUND 5

| | | | | |
|-------------------------------|------------|---|------------|---|
| <u>Inglewood 2, Steiner 2</u> | | | | |
| 1 | J Kliger | 0 | S Mazner | 1 |
| 2 | N Goldberg | 1 | M Gordon | 0 |
| 3 | L Johnson | 1 | N Robinson | 0 |
| 4 | R Berg | 0 | J Gibbs | 1 |

U.C.L.A. 1½, Santa Monica 2½

| | | | | |
|---|------------|---|------------|---|
| 1 | R Cross | 0 | S Almgren | 1 |
| 2 | R Hamman | 1 | N Lessing | 0 |
| 3 | D Hestenes | ½ | R Martin | ½ |
| 4 | G Soules | 0 | G VanDeene | 1 |

ROUND 2

| | | | | |
|--------------------------------|----------|---|---------------|---|
| <u>Steiner 3½, Inglewood ½</u> | | | | |
| 1 | I Rivise | 1 | J Kliger | 0 |
| 2 | G Rubin | ½ | L Johnson | ½ |
| 3 | M Gordon | 1 | E Wallenhorst | 0 |
| 4 | S Geller | 1 | S Silven | 0 |

Santa Monica 1, U.C.L.A. 3

| | | | | |
|---|------------|---|------------|---|
| 1 | R Martin | 0 | R Cross | 1 |
| 2 | H Abel | 0 | R Hamman | 1 |
| 3 | G VanDeene | 1 | D Hestenes | 0 |
| 4 | P Wrangell | 0 | G Soules | 1 |

ROUND 4

| | | | | |
|--------------------------------|------------|---|------------|---|
| <u>U.C.L.A. 4, Inglewood 0</u> | | | | |
| 1 | R Cross | 1 | T Kliger | 0 |
| 2 | R Hamman | 1 | L Johnson | 0 |
| 3 | D Hestenes | 1 | G Stearnes | 0 |
| 4 | G Soules | 1 | A Troy | 0 |

Santa Monica 4, Steiner 0

| | | | | |
|---|------------|---|------------|---|
| 1 | S Almgren | 1 | Forfeit | 0 |
| 2 | N Lessing | 1 | I Rivise | 0 |
| 3 | R Martin | 1 | H Borochow | 0 |
| 4 | P Waterman | 1 | S Geller | 0 |

ROUND 6

| | | | | |
|------------------------------------|-------------|---|----------|---|
| <u>Santa Monica 4, Inglewood 0</u> | | | | |
| 1 | R Martin | 1 | J Kliger | 0 |
| 2 | H Abel | 1 | Forfeit | 0 |
| 3 | P Waterman | 1 | Forfeit | 0 |
| 4 | G Van Deene | 1 | Forfeit | 0 |

Steiner 3½, U.C.L.A. ½

| | | | | |
|---|-------------|---|------------|---|
| 1 | J Moskowitz | 1 | R Cross | 0 |
| 2 | I Rivise | 1 | R Hamman | 0 |
| 3 | H Borochow | 1 | D Hestenes | 0 |
| 4 | R Lorber | ½ | G Soules | ½ |

Southern California Chess League (continued)

In Class II the field of 19 teams was split into East and West sections. The top two in each section will progress to a 4-team play-off, to be held between May 19 and June 6. The West teams are Santa Monica 1, which won the section 8-0, and Van Nuys, which placed second, 6-2. The East teams are Inglewood, which won the section 9-0, and either Pasadena or Long Beach. The play-off spot depends upon the result of one adjourned game.

F I N A L S T A N D I N G S

CLASS I

| | <u>Matches</u> | <u>Points</u> |
|-------------------|----------------------------------|------------------|
| 1. U.C.L.A. | 4-2 | 15 $\frac{1}{2}$ |
| 2. Santa Monica | 4-2 | 15 |
| 3. Herman Steiner | 3 $\frac{1}{2}$ -2 $\frac{1}{2}$ | 13 |
| 4. Inglewood | $\frac{1}{2}$ -5 $\frac{1}{2}$ | 4 $\frac{1}{2}$ |

CLASS II - WEST

| | | |
|-------------------------|----------------------------------|------------------|
| 1. Santa Monica 1 | 8-0 | 36 $\frac{1}{2}$ |
| 2. Van Nuys | 6-2 | 34 $\frac{1}{2}$ |
| 3. Santa Monica 2 | 5-3 | 28 $\frac{1}{2}$ |
| 4. Santa Monica 3 | 4 $\frac{1}{2}$ -3 $\frac{1}{2}$ | 27 $\frac{1}{2}$ |
| 5. Valley | 4-4 | 23 $\frac{1}{2}$ |
| 6. Steiner | 3-5 | 24 |
| 7. Torrance | 3-5 | 19 $\frac{1}{2}$ |
| 8. South Bay | 2 $\frac{1}{2}$ -5 $\frac{1}{2}$ | 22 |
| 9. Craftsmen (Local 22) | 0-8 | 0 |

CLASS II - EAST

| | | |
|----------------------------|----------------------------------|------------------|
| 1. Inglewood | 9-0 | 40 |
| 2. Pasadena) | 7-1 | |
| 3. Long Beach) incomplete | 7-1 | |
| 4. J.P.L. 1 | 5-4 | 26 $\frac{1}{2}$ |
| 5. Water & Power | 4 $\frac{1}{2}$ -4 $\frac{1}{2}$ | 26 $\frac{1}{2}$ |
| 6. City Terrace | 4-5 | 29 |
| 7. Monterey Park | 4-5 | 24 $\frac{1}{2}$ |
| 8. Downey | 2 $\frac{1}{2}$ -6 $\frac{1}{2}$ | 24 |
| 9. Standard Oil | 1-8 | 18 |
| 10. J.P.L. 2 | 0-9 | 5 |

Class III, which is a beginners' section, will be reported in our next issue, as will be the detailed scores of Class II. We are indebted to Ralph Hagedorn for these excellent reports of a league which covers a wide area.

CENTRAL CALIFORNIA CHESS LEAGUE

Hail the new champions! Sacramento won the first leg on a new trophy on March 16, and from now on will be hard to beat. It was the first loss for San Jose in some years, and it came as a shock to some of the players who had to leave Modesto early, as San Jose seemed to have an advantage on the unfinished boards at the time. Sacramento is in a talent-building program, and it may be as hard to dislodge the Solons for the next few years as it was to dethrone San Jose the past few years.

Bill Haines of Sacramento won the prize of \$5 for the best individual score, a perfect 6-0.

Round 7, March 16, 1958:

| <u>Sacramento 5, San Jose 3</u> | | | | <u>Pittsburg 4, Fresno 4</u> | | | |
|---------------------------------|---------------|--------------|---------------|------------------------------|---------------|---------------|---------------|
| 1 E Toth | 0 | W Adams | 1 | 1 J Smith | 0 | P Smith | 1 |
| 2 O Celle | 1 | H Hindman | 0 | 2 L Talcott | 1 | R Baker | 0 |
| 3 A Janushkowsky | 0 | B Mueller | 1 | 3 S Poulsen | $\frac{1}{2}$ | O Maschke | $\frac{1}{2}$ |
| 4 E Edmondson | $\frac{1}{2}$ | P Foley | $\frac{1}{2}$ | 4 R Guzman | 0 | E Suhr | 1 |
| 5 W Haines | 1 | A Critchlow | 0 | 5 A Loera | 1 | D Bevill | 0 |
| 6 M Saca | 1 | R Fournier | 0 | 6 T Tracy | $\frac{1}{2}$ | M Phetteplace | $\frac{1}{2}$ |
| 7 N Austin | 1 | J Iwashita | 0 | 7 F Weinberg | 1 | L Legler | 0 |
| 8 J Bender | $\frac{1}{2}$ | J Blackstone | $\frac{1}{2}$ | 8 M Rivera | 0 | V Quiles | 1 |

| <u>Oakdale 4, Stockton 4</u> | | | | <u>F I N A L S T A N D I N G S</u> | | | | |
|------------------------------|---|------------|---|------------------------------------|-------------|-------------|--------------|----------------|
| | | | | <u>Won</u> | <u>Lost</u> | <u>Tied</u> | <u>Total</u> | |
| 1 M Mattingly | 0 | R Leigh | 1 | 1 Sacramento | 5 | 0 | 1 | $5\frac{1}{2}$ |
| 2 J Sutherland | 1 | H Minchaca | 0 | 2 San Jose | 5 | 1 | 0 | 5 |
| 3 H Mortensen | 1 | W Jarvis | 0 | 3 Pittsburg | 3 | 1 | 2 | 4 |
| 4 R Ewing | 0 | M Shultz | 1 | 4 Fresno | 3 | 2 | 1 | $3\frac{1}{2}$ |
| 5 C J Smith | 1 | A Radinsky | 0 | 5 Stockton | 1 | 4 | 1 | $1\frac{1}{2}$ |
| 6 L Sanny | 1 | M Sanders | 0 | 6 Oakdale | 0 | 4 | 2 | 1 |
| 7 W Smith | 0 | A C Saxon | 1 | 7 Modesto | 0 | 5 | 1 | $\frac{1}{2}$ |
| 8 J Christiansen | 0 | H Keibler | 1 | | | | | |

LEAGUE DIRECTORS' MEETING

It was voted to hold a combined individual championship and State Championship qualifying tournament at Pittsburg on April 26-27. The prize fund for the State finals is to be raised by the member clubs instead of being raised by entry fees in the qualifying tournament. It was tentatively decided to allow Sacramento to enter two teams in the team tournament next fall. The top six men will be allowed to play only for the first team.

CENTRAL CALIFORNIA INDIVIDUAL CHAMPIONSHIP

Phil Smith of Fresno won the 1958 championship of the League and thereby won a place in the finals of the State Championship, to be played in San Francisco in November. The tournament was held in Pittsburg April 26-27. It was the fourth straight time that a player from Fresno won the title (Smith in 1955, 1957, 1958; Tom Fries in 1956). During the week end a rapid-transit tournament was held. The winner: Tom Tracy. Second: Frank Olvera.

| | I | II | III | IV | Score | S-B |
|-----------------------------|----|----|-----|----|-------|-----|
| 1. P.D. Smith, Fresno | W7 | W4 | W5 | D3 | 3½-½ | |
| 2.) Frank Olvera, Pittsburg | L4 | W8 | W6 | W5 | 3-1 | 5½ |
| 3.) Ray Guzman, Pittsburg | D6 | W7 | W4 | D1 | 3-1 | 5½ |
| 4.) Tom Tracy, Pittsburg | W2 | L1 | L3 | W7 | 2-2 | 4 |
| 5.) Bob Baker, Fresno | W8 | W6 | L1 | L2 | 2-2 | ½ |
| 6. M.E. Mattingly, Oakdale | D3 | L5 | L2 | W8 | 1½-2½ | |
| 7. Manuel Rivera, Pittsburg | L1 | L3 | W8 | L4 | 1-3 | |
| 8. LeRoy Turner, Concord | L5 | L2 | L7 | L6 | 0-4 | |

FRESNO CHESS CLUB

Phil Smith returned to competition to take the 1958 club championship by the perfect score of 5-0. Bob Baker, 1957 titleholder, took second and Mark Phetteplace third.

FRESNO CHESS CLUB CHAMPIONSHIP, 1955

| | 1 | 2 | 3 | 4 | 5 | 6 | Score |
|---------------------|---|---|---|---|---|---|-------|
| 1. P.D. Smith | X | 1 | 1 | 1 | 1 | 1 | 5-0 |
| 2. Bob Baker | 0 | X | 0 | 1 | 1 | 1 | 3-2 |
| 3. Mark Phetteplace | 0 | 1 | X | 0 | 1 | ½ | 2½-2½ |
| 4.) Del Bevill | 0 | 0 | 1 | X | 0 | 1 | 2-3 |
| 5.) Otto Maschke | 0 | 0 | 0 | 1 | X | 1 | 2-3 |
| 6. Leo Legler | 0 | 0 | ½ | 0 | 0 | X | ½-4½ |

Wallace Strohschein and Victor Quiles tied for first place in Section B, held concurrently, with 4-1 scores, and Strohschein won a play-off. There followed: J. Weinschenk 2-3, Stephen Satarian 2-3, A. Sotelo 2-3, and Elson Bruse 1-4.

On April 21 a rapid-transit tournament was won by Phil Smith, 7½-½. There followed Bob Baker 6-2, Otto Maschke 5½-2½, Emil Suhr 5-3, Del Bevill 4½-3½, Inguard Beck 3½-4½, Gene Hunsaker 2-6, Leo Legler 2-6, and George Hunsaker 0-8.

SAN FRANCISCO BAY AREA CHESS LEAGUE

After eight rounds of the 1958 team tournament the Mechanics' Institute "Knights" are leading by a score of $7\frac{1}{2}$ - $\frac{1}{2}$ in Division A. In Division B, the surprising Precita Valley club holds a strong 7-1 lead, two and a half points ahead of the equally surprising Alameda team.

The Knights have won by big margins in six of their eight matches, only Castle (4-3 and $3\frac{1}{2}$ - $3\frac{1}{2}$) being stubborn enough to hold the score to less than $4\frac{1}{2}$ points. Golden Gate holds a comfortable second, and Oakland is fighting Castle for third place.

Precita Valley has lost only one match so far in Division B, and that was to their companion team from the Precita Valley Community Center, the Missionaries. Alameda holds a half-point lead over the Mechanics' Institute Bs in the race for second place.

DIVISION AROUND IV, March 1, 1958:

| | | | | | | |
|--------------------------------|---------------|---|--------------|--------------|-------------|---|
| <u>Golden Gate 6, Castle 1</u> | | | | 4 E Krestini | 1 R Willson | 0 |
| 1 G Ramirez | 1 W Hendricks | 0 | 5 C Capps | 1 F Adelman | 0 | 0 |
| 2 H Gross | 1 N Falconer | 0 | 6 W Beach | 1 R Hultgren | 0 | 0 |
| 3 R Currie | 1 D Belmont | 0 | 7 Dr K Colby | 0 G Hultgren | 1 | 1 |

| | | | | | | |
|-------------------------------|------------|---|--------------|------------|-----------|---|
| <u>M.I. Knights 7, U.C. 0</u> | | | | 4 A Bourke | 1 Forfeit | 0 |
| 1 W Addison | 1 Forfeit | 0 | 5 E Pruner | 1 Forfeit | 0 | 0 |
| 2 J Schmitt | 1 Forfeit | 0 | 6 C Svalberg | 1 Forfeit | 0 | 0 |
| 3 C Bagby | 1 W Rebold | 0 | 7 K Bendit | 1 Forfeit | 0 | 0 |

| | | | | | | |
|--|-------------------------|---------------|-------------|------------------------|---------------|---------------|
| <u>Oakland $3\frac{1}{2}$, M.I. Bishops $2\frac{1}{2}$</u> | | | | 4 R Trenberth | 0 N Henwood | 1 |
| 1 J Demos | $\frac{1}{2}$ D Nieder | $\frac{1}{2}$ | 5 R Freeman | $\frac{1}{2}$ O Wreden | $\frac{1}{2}$ | $\frac{1}{2}$ |
| 2 L Ledgerwood | 1 R Plock | 0 | 6 E Lien | 1 P Foley | 0 | 0 |
| 3 L Talcott | $\frac{1}{2}$ L Boyette | $\frac{1}{2}$ | 7 - | - | - | - |

ROUND V, March 15, 1958:

| | | | | | | |
|----------------------------|--------------------------|---------------|--------------|-------------------------|---------------|---------------|
| <u>Oakland 4, Castle 3</u> | | | | 4 R Cuneo | 1 F Adelman | 0 |
| 1 J Demos | $\frac{1}{2}$ N Falconer | $\frac{1}{2}$ | 5 C Bergman | $\frac{1}{2}$ R Willson | $\frac{1}{2}$ | $\frac{1}{2}$ |
| 2 L Ledgerwood | 0 W Hendricks | 1 | 6 E A Yaeger | 1 Dr E Kupka | 0 | 0 |
| 3 L Talcott | 1 R Hultgren | 0 | 7 E Lien | 0 C Wilson | 1 | 1 |

| | | | | | | |
|--|----------------|---|--------------|-----------------------|---------------|---------------|
| <u>M.I. Knights $4\frac{1}{2}$, Golden Gate $2\frac{1}{2}$</u> | | | | 4 Forfeit | 0 R Currie | 1 |
| 1 W Addison | 0 H Gross | 0 | 5 K Bendit | 1 C Capps | 0 | 0 |
| 2 C Bagby | 0 G Ramirez | 1 | 6 A Bourke | 1 E Krestini | 0 | 0 |
| 3 E Pruner | 1 W Pafnutieff | 0 | 7 C Svalberg | $\frac{1}{2}$ W Beach | $\frac{1}{2}$ | $\frac{1}{2}$ |

| | | | | | | |
|-------------------------------|-------------|---|-------------|------------|------------|---|
| <u>M.I. Bishops 7, U.C. 0</u> | | | | 4 L Tomori | 1 W Rebold | 0 |
| 1 L Boyette | 1 R Smook | 0 | 5 O Wreden | 1 Forfeit | 0 | 0 |
| 2 D Nieder | 1 J Hursch | 0 | 6 W Wise | 1 Forfeit | 0 | 0 |
| 3 R Plock | 1 E Simanis | 0 | 7 D Madgett | 1 Forfeit | 0 | 0 |

S.F. BAY AREA CHESS LEAGUE - DIVISION A (continued)ROUND VI, March 29, 1958:

| | | | | | | | | | |
|-----------------------------------|--------------|---|-----------|---|---------|-------------|---------|--------------|---|
| <u>Oakland 1½, Golden Gate 5½</u> | | | | 4 | R Cuneo | 0 | C Capps | 1 | |
| 1 | J Demos | 0 | G Ramirez | 1 | 5 | R Trenberth | 0 | E Krestini | 1 |
| 2 | L Ledgerwood | 0 | R Currie | 1 | 6 | C Bergman | ½ | W Beach | ½ |
| 3 | R Freeman | 0 | H Gross | 1 | 7 | E Lien | 1 | S Van Gelder | 0 |

| | | | | | | | | | |
|---------------------------|-----------|---|-----------|---|---------|--------------|-------------|------------|---|
| <u>U.C. 3½, Castle 3½</u> | | | | 4 | R Wiebe | 1 | W Hendricks | 0 | |
| 1 | R Smook | 1 | G McClain | 0 | 5 | W Rebold | ½ | G Hultgren | ½ |
| 2 | J Hursch | 0 | D Belmont | 1 | 6 | T Theodoroff | 0 | Dr E Kupka | 1 |
| 3 | E Simanis | 0 | F Adelman | 1 | 7 | N Buder | 1 | G Farly | 0 |

| | | | | | | | | | |
|---------------------------------------|-----------|---|-----------|---|--------|----------|----------|------------|---|
| <u>M.I. Bishops 1, M.I. Knights 6</u> | | | | 4 | W Wise | 0 | A Bourke | 1 | |
| 1 | L Boyette | ½ | J Schmitt | ½ | 5 | L Tomori | 0 | K Bendit | 1 |
| 2 | R Plock | 0 | E Pruner | 1 | 6 | P Foley | 0 | C Svalberg | 1 |
| 3 | D Nieder | 0 | C Bagby | 1 | 7 | J Murray | ½ | H Branton | ½ |

ROUND VII, April 12, 1958:

| | | | | | | | | | |
|----------------------------------|-----------|---|--------------|---|----------|------------|---------|-----------|---|
| <u>M.I. Knights 5, Oakland 2</u> | | | | 4 | A Bourke | 1 | R Cuneo | 0 | |
| 1 | W Addison | ½ | J Demos | ½ | 5 | E Pruner | 1 | C Bergman | 0 |
| 2 | C Bagby | ½ | L Ledgerwood | ½ | 6 | K Bendit | 1 | E Lien | 0 |
| 3 | J Schmitt | 0 | R Trenberth | 1 | 7 | C Svalberg | 1 | E Yaeger | 0 |

| | | | | | | | | | |
|---------------------------------|-----------|---|-----------|---|-----------|-------------|----------|----------|---|
| <u>Castle 4, M.I. Bishops 3</u> | | | | 4 | F Adelman | 0 | J Murray | 1 | |
| 1 | C Wilson | 0 | L Boyette | 1 | 5 | R Willson | 0 | O Wreden | 1 |
| 2 | G McClain | 1 | D Nieder | 0 | 6 | W Hendricks | 1 | L Tomori | 0 |
| 3 | D Belmont | 1 | R Plock | 0 | 7 | R Hultgren | 1 | P Foley | 0 |

| | | | | | | | | | |
|--------------------------------|-----------|---|-----------|---|---------|--------------|---------|--------------|---|
| <u>U.C. 3½, Golden Gate 3½</u> | | | | 4 | O Celle | ½ | C Capps | ½ | |
| 1 | R Smook | 1 | G Ramirez | 0 | 5 | R Wiebe | 0 | H Rosenbaum | 1 |
| 2 | J Hursch | 1 | R Currie | 0 | 6 | T Theodoroff | 0 | Dr K Colby | 1 |
| 3 | E Simanis | 1 | H Gross | 0 | 7 | N Buder | 0 | S Van Gelder | 1 |

ROUND VIII, April 26, 1958:

| | | | | | | | | | |
|----------------------------|--------------|---|-----------|---|---------|-------------|---------|--------------|---|
| <u>Oakland 4½, U.C. 2½</u> | | | | 4 | R Cuneo | 0 | O Celle | 1 | |
| 1 | J Demos | 1 | J Hursch | 0 | 5 | R Trenberth | 0 | R Wiebe | 1 |
| 2 | L Ledgerwood | 1 | R Smook | 0 | 6 | C Bergman | 1 | T Theodoroff | 0 |
| 3 | L Talcott | ½ | E Simanis | ½ | 7 | E Lien | 1 | R Maio | 0 |

| | | | | | | | | | |
|--|-----------|---|--------------|---|----------|-----------|----------|--------------|---|
| <u>M.I. Bishops 2½, Golden Gate 4½</u> | | | | 4 | J Murray | ½ | R Currie | ½ | |
| 1 | L Boyette | 0 | G Ramirez | 1 | 5 | O Wreden | 0 | C Capps | 1 |
| 2 | D Nieder | 0 | W Pafnutieff | 1 | 6 | D Madgett | ½ | H Rosenbaum | ½ |
| 3 | R Plock | 1 | H Gross | 0 | 7 | P Foley | ½ | S Van Gelder | ½ |

| | | | | | | | | | |
|-----------------------------------|-----------|---|-------------|---|-----------|------------|-----------|------------|---|
| <u>M.I. Knights 3½, Castle 3½</u> | | | | 4 | J Schmitt | 1 | F Adelman | 0 | |
| 1 | W Addison | 1 | N Falconer | 0 | 5 | A Bourke | ½ | R Hultgren | ½ |
| 2 | C Bagby | 1 | G McClain | 0 | 6 | C Svalberg | 0 | R Willson | 1 |
| 3 | E Pruner | 0 | W Hendricks | 1 | 7 | K Bendit | 0 | C Wilson | 1 |

DIVISION BROUND V, March 8, 1958:

| | | | | | | | | | |
|---|-------------|---|-------------|---|-------------|-------------|----------|------------|---|
| <u>Precita Valley 5½, M.I. "B/1" 1½</u> | | | | 4 | J Reynolds | ½ | F Wreden | ½ | |
| 1 | J Cook | 1 | V Bedjanian | 0 | 5 | N Renaud | 1 | D Lee | 0 |
| 2 | L Allen | 1 | D McLeod | 0 | 6 | I Vegvary | 1 | C Loveland | 0 |
| 3 | D Gibson | 0 | N McLeod | 1 | 7 | R Blakemore | 1 | W Rawley | 0 |
| <u>Missions 2, Alameda 5</u> | | | | 4 | M Kramer | 0 | R Turner | 1 | |
| 1 | L Tullis | 0 | R Thacker | 1 | 5 | P Bogosian | 0 | D Ogilvie | 1 |
| 2 | D Lundmark | 0 | A Wang | 1 | 6 | J Ramirez | 1 | Forfeit | 0 |
| 3 | D O'Classen | 0 | W Jens | 1 | 7 | T Gee | 1 | Forfeit | 0 |
| <u>M.I. "B" 5, Golden Gate 2</u> | | | | 4 | R Barringer | 1 | B Wong | 0 | |
| 1 | J Kalisch | 1 | H King | 0 | 5 | J Vaughn | 0 | N Nielsen | 1 |
| 2 | W Leeds | ½ | Forfeit | 0 | 6 | H Morgan | ½ | I Dublin | ½ |
| 3 | G Knofs | ½ | G Lutz | ½ | 7 | L Post | 1 | Forfeit | 0 |

ROUND VI, March 22, 1958:

| | | | | | | | | | |
|--|-----------|---|------------|---|-------------|-------------|-----------|-----------|---|
| <u>M.I. "B/1" 5½, Missions 1½</u> | | | | 4 | F Wreden | 1 | J Ramirez | 0 | |
| 1 | J Murray | 1 | D Lundmark | 0 | 5 | D Lee | 1 | T Gee | 0 |
| 2 | D McLeod | 1 | Forfeit | 0 | 6 | C Loveland | 1 | R Meyers | 0 |
| 3 | N McLeod | ½ | L Tullis | ½ | 7 | W Rawley | 0 | M Kramer | 1 |
| <u>Precita Valley 6, Golden Gate 1</u> | | | | 4 | J Reynolds | ½ | C Huneke | ½ | |
| 1 | J Cook | 1 | N Naughton | 0 | 5 | D Gibson | 1 | J Vaughn | 0 |
| 2 | L Allen | 1 | H King | 0 | 6 | I Vegvary | ½ | N Nielsen | ½ |
| 3 | N Renaud | 1 | G Lutz | 0 | 7 | R Blakemore | 1 | B Wong | 0 |
| <u>M.I. "B" 3, Alameda 4</u> | | | | 4 | R Barringer | 0 | S Joplin | 1 | |
| 1 | J Kalisch | 0 | R Thacker | 1 | 5 | D Madgett | 0 | R Turner | 1 |
| 2 | W Leeds | 0 | A Wang | 1 | 6 | J Vaughn | 1 | D Ogilvie | 0 |
| 3 | G Knofs | 1 | W Jens | 0 | 7 | L Post | 1 | R Holman | 0 |

ROUND VII, April 5, 1958:

| | | | | | | | | | |
|-------------------------------------|-----------|---|-------------|---|-------------|-------------|-------------|------------|---|
| <u>M.I. "B" 4, M.I. "B/1" 2</u> | | | | 4 | R Barringer | 1 | F Wreden | 0 | |
| 1 | J Kalisch | 1 | J Hope | 0 | 5 | L Post | 0 | C Loveland | 1 |
| 2 | G Knofs | 1 | V Bedjanian | 0 | 6 | C Berryhill | 1 | D Lee | 0 |
| 3 | E Basucci | 0 | M Karr | 1 | 7 | - | - | - | - |
| <u>Missions 2, Precita Valley 5</u> | | | | 4 | M Kramer | 1 | R Blakemore | 0 | |
| 1 | L Tullis | 0 | J Cook | 1 | 5 | Forfeit | 0 | J Reynolds | 1 |
| 2 | T Gee | 0 | N Renaud | 1 | 6 | D Fromer | 0 | V Jewett | 1 |
| 3 | J Ramirez | 1 | L Allen | 0 | 7 | D Lundmark | 0 | E Poka | 1 |
| <u>Alameda 4½, Golden Gate ½</u> | | | | 3 | W Jens | ½ | J Vaughn | ½ | |
| 1 | R Thacker | 1 | C Huneke | 0 | 4 | R Turner | 1 | N Nielsen | 0 |
| 2 | A Wang | 1 | G Lutz | 0 | 5 | D Ogilvie | 1 | B Wong | 0 |

S.F. BAY AREA CHESS LEAGUE - DIVISION B (continued)ROUND VIII, April 19, 1958:

| | | | | | | |
|---------------------------------------|---|-------------|---|----------------|---------------|---|
| <u>Missions 4, Golden Gate 3</u> | | | | 4 J Tobin | 0 G Lutz | 1 |
| 1 D Lundmark | 1 | B Gross | 0 | 5 I Tullis | 0 N Nielsen | 1 |
| 2 D Fromer | 0 | H Edelstein | 1 | 6 M Kramer | 1 I Dublin | 0 |
| 3 D Ryan | 1 | C Huneke | 0 | 7 R Meyers | 1 Forfeit | 0 |
| <u>M.I. "B" 3½, Precita Valley 3½</u> | | | | 4 G Knofs | 1 Forfeit | 0 |
| 1 J Kalisch | 0 | N Renaud | 1 | 5 R Barringer | 0 J Reynolds | 1 |
| 2 C Berryhill | 0 | L Allen | 1 | 6 W Leeds | 1 Forfeit | 0 |
| 3 J Vaughn | 1 | J Cook | 0 | 7 R Loewinsohn | ½ R Blakemore | ½ |
| <u>M.I. "B/1" 2, Alameda 5</u> | | | | 4 F Wreden | 0 A Wang | 1 |
| 1 M Karr | 0 | D Krause | 1 | 5 D Lee | 0 W Jens | 1 |
| 2 D McLeod | 0 | L Hill | 1 | 6 C Loveland | 1 R Turner | 0 |
| 3 N McLeod | 1 | P Cleghorn | 0 | 7 W Rawley | 0 D Ogilvie | 1 |

STANDINGS AFTER EIGHT ROUNDS

| <u>DIVISION A</u> | | <u>DIVISION B</u> | |
|-------------------|-------|-------------------|-------|
| 1. Knights | 7½-½ | 1. Precita Valley | 7-1 |
| 2. Golden Gate | 6-2 | 2. Alameda | 5-3 |
| 3. Oakland | 3½-4½ | 3. M.I. "B" | 4½-3½ |
| 4. Castle | 3-4 | 4. Missionaries | 3½-4½ |
| 5. U.C. | 1½-5½ | 5. M.I. "B/1" | 2½-5½ |
| 6. Bishops | 1½-6½ | 6. Golden Gate | 1½-6½ |

NORTH-SOUTH WARMUP MATCHES

Looking forward to Memorial Day, when two huge teams representing Northern and Southern California will meet at Fresno, the two regions will stage warm-up matches during May. On Sunday, May 11, the southerners will hold a 50-board Yankee vs. Rebel match at the University of Judaism, formerly the Hollywood Athletic Club, at 6525 Sunset Blvd. All players residing north of Wilshire or the San Bernardino Freeway will be Yankees and will be captained by Al Raymond of Lancaster. Players south of the line as far as the Mexican border will be Rebels. Their captain will be LeRoy Johnson.

The northerners will hold their annual San Francisco vs. East Bay team match on Saturday night, May 24, at the Mechanics' Institute. The Bay Area team matches scheduled for May 24 in Division A will be postponed until June 7 in order to hold the big match. The Central California team players will be invited to play on the "East Bay" side (which will probably require that the name be changed).

FAIRFAX WINS LOS ANGELES HIGH SCHOOL TITLE

Fairfax High repeated as Los Angeles champions in an 8-section, 6-round Swiss held at Fairfax in April. The Fairfax team scored $21\frac{1}{2}$ - $2\frac{1}{2}$. South Gate took second place with 18 points, followed by Dorsey $17\frac{1}{2}$, University $16\frac{1}{2}$, Franklin and Westchester, both 16. The scores of the top four players of each school were added to make up the team scores.

Bruce Margolin, Stephen Sholomson and Robert Silva of Fairfax won their sections; no other school won more than one. The other winners were Wally De Vourchenko of Belmont, Ken Hensey of Dorsey, Linda Ramstad of Manual Arts, Strassen of Washington, and John Mortz of South Gate.

Tom Heimberg directed the tournament, assisted by Roland Getze, Harry Borochoy, and Bobby Cross.

REDDING HIGH SCHOOL CHESS

Central Valley High School formed a chess club in March and the Redding Record-Searchlight reported a membership of 77 in a feature story on March 20. The story reported that the cafeteria, home economics room and the mechanical drawing room were being overrun with chessplayers, and carried a photo of Kay Rendahl, Dorothy Voreis and Bill Richards, president, vice-president and secretary, respectively.

On March 12 Larry Zipfel, CSCF director of the area, gave a 30-board simultaneous exhibition. "Zip" won 28, lost 1 (Bill Caughron) and drew 1 (Jim Burger).

RIVERSIDE - by Charles B. Walker

On March 28, 1958, international master Imre König gave a very successful simultaneous exhibition at the Riverside Chess Club located at 3650 Arlington Ave. (Shamel Park Recreation Bldg.).

Thirty-four chessplayers faced Mr. König. The only player to defeat the master was George Raikus of Rohr Aircraft chess club. Draws were obtained by Daniel B. Choate, Wm. B. Bates, Wm. J. Lewis and Al Wheeldon, all of the Riverside club, and Robert Cooper of Elsinore. The Riverside players were joined by members of the San Bernardino and Hemet chess clubs to confront Mr. König.

GAME OF THE MONTH

The Golden Gate club championship has become one of our strongest tournaments, with players from several Bay Area clubs participating each year. Bill Addison has taken a strangle-hold on the title with three straight wins, but has tough competition as the following game with the second prize winner shows:

SAN FRANCISCO, 1958

Game No. 418 - Caro-Kann

| | |
|----------|------------|
| White | Black |
| H. Gross | W. Addison |

(Notes by Henry Gross)

- | | |
|----------|-------|
| 1. P-K4 | P-QB3 |
| 2. Kt-K2 | |

As played by Persitz vs. Golembek, Dec., 1954 in the Oxfordshire vs. Buckinghamshire match and not without success, too. The idea is if 2...P-Q4; 3. P-K5, B-B4; 4. Kt-Kt3, B-Kt3; 5. P-KR4, P-KR3; 6. P-R5, B-R2; 7. P-K6, PxP; 8. P-Q4 leaving Black uncomfortably placed.

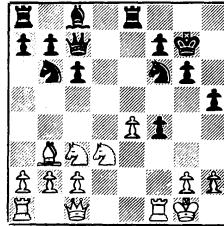
- | | |
|-----------|--------|
| 2. ... | P-KKt3 |
| 3. P-Q4 | B-Kt2 |
| 4. QKt-B3 | P-Q3 |

Has the Caro-Kann turned into the Pirc?

- | | |
|----------|-------|
| 5. B-K3 | Kt-B3 |
| 6. P-B3 | Q-Kt3 |
| 7. Q-B1 | P-KR4 |
| 8. Kt-B4 | Q-B2 |
9. P-K5 was the threat to be followed by 10. P-Q5 and 11. P-K6.
- | | |
|-----------|--------|
| 9. B-B4 | QKt-Q2 |
| 10. O-O | P-K4 |
| 11. Kt-Q3 | O-O |
| 12. PxP | PxP |
| 13. QB-R6 | Kt-Kt3 |
| 14. B-Kt3 | R-K1 |

Not good as future developments will show. The KBP is left weak. Better is 14...P-B4; 15. Kt-Kt5, Q-K2 (Q-Q2; 16. P-B4, QxKt?; 17.

- R-Q1, Q-K7; 18. Kt-B3 trapping the Queen); 16. P-B4, B-K3, etc.
- | | |
|-----------|-----|
| 15. BxB | KxB |
| 16. P-B4! | PxP |



17. P-K5?

The simple 17. QxP followed by doubling rooks on the KB file would have given White a decisive end game advantage.

- | | |
|-----------|--------|
| 17. ... | Kt-Kt5 |
| 18. QxP | B-B4 |
| 19. QR-K1 | |

And now 19. Q-Kt5 is the most difficult for Black to meet. 20. RxB is threatened. 19...BxKt is more than answered by 20. RxPch. 19...RxP; 20. KtxR, QxKt; 21. Q-R4 leaves Black the exchange down with no compensation. So Black must play 19...B-K3 after which 20. QR-K1, BxB; 21. PxB leaves White with many threats.

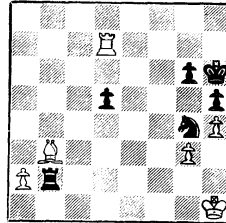
- | | |
|---------|------|
| 19. ... | BxKt |
| 20. PxB | RxP |
| 21. RxR | |

21. P-KR3 is the move I had intended when I played 19. QR-K1. I now saw that this would be met by 21...Q-K2 and if 22. Q-Kt3 then RxR and Q-B4ch or if 22. Q-Q4 by P-QB4. But even so after 21...Q-K2; 22. QxPch, QxQ; 23. RxQch, K-RL (K-R3?; 24. Kt-Q4 and Black must give up the exchange to save the Kt); 24. R-K4, RxR; 25. KtxR, Kt-R3; 26. RxP and White stands well.

21. ... QxR
 22. QxPch K-R3
 23. P-Kt3

It was either this or 23. Q-B4ch. In either case Black is now out of all his difficulties and should win.

23. ... Q-K6ch
 24. K-RL Q-Q7
 25. Q-B4ch QxQ
 26. RxQ R-Q1
 27. R-B7 RxP
 28. RxP R-Q7
 29. P-KR4 Kt-Q4
 30. KtxKt PxxKt
 31. RxP RxP
 32. R-Q7



Of course not 32. BxP, R-Kt8ch; 33. K-Kt2, Kt-K6ch winning.

But the text is no better. Black should now play 32...Kt-K4 (E.C. Jonas!) winning. For example, 33. RxP, Kt-B6! or 33. R-QB7, Kt-B6; 34. R-B2, R-Kt8ch; 35. K-Kt2, Kt-K8ch winning or 33. R-QB7, Kt-B6; 34. B-B2, P-Q5 and White is helpless. 35. K-Kt2 fails to RxBch; 36. RxR, Kt-K8ch winning.

32. ... Kt-B3?
 33. R-KB7 Kt-K5
 34. BxP KtxPch
 35. K-Kt1 Kt-K7ch
 36. K-B1 Kt-B6
 37. B-Kt3 KtxP
 38. BxKt RxB
 39. R-B4 R-Q7
 40. K-Kt1

Drawn.

TWO PLAYERS, Class C or thereabouts, were seen recently at an outdoor chess table in a New York public park. The elderly man, seedy and unhappy because he had lost several games in a row to the young fellow, finally got to an end game with a passed pawn at KR3. But the youngster had a passed pawn at QB2 which would queen immediately afterwards — with a check. The old man gave his best thought to the situation and produced the following brilliancy (played con brio):

1. P-KR4 P-QB4
2. P-KR5 P-QB5
3. P-KR7! P-QB6
4. P-KR8(Q) P-QB7
5. Q-QB8 Resigns. (reported by Dick Sasuly)

We regret to record the death on March 26, 1958, of Martin O. Johnson of Healdsburg. Mr. Johnson was one of the senior members of our California Open for many years and a loyal member of the North team. He would have been eligible for a 5-year pin this year. Mr. Johnson was playing in the Open at Santa Barbara in 1956 when his health failed and he dropped out. (We were anxious about him for some time, until we heard that he had reached his home safely.) He appeared at the Open at Monterey last year, but was only a spectator. To Mrs. Lena C. Johnson, his widow, we extend our deepest regrets.

We regret to record the death in December, 1957, of J. Roy Glover of Pittsburg. A delayed communication from H. S. Lansing reports that Mr. Glover's last illness took most of his life's savings, and Mr. Lansing is doing what he can to dispose of Mr. Glover's chess material. Any offers will be appreciated for the following: Best Games (Alechin); M.C.O. - 6; Fireside Book of Chess (Chernev-Reinfeld); The Brilliant Touch (Korn); Practical End Game Play (Reinfeld); The Game of Chess (Tarrasch); Masters of the Chess Board (Reti); Chess Strategy & Traps (Emery); Every Game Checkmate (Watts); Traps on the Chess Board (Znosko-Borovsky); The Middle Game in Chess (Znosko-Borovsky); Winning Chess Traps (Chernev); Strategy & Tactics in Chess (Euwe); Chess Mastery (Reinfeld); Chess Board Magic (Chernev).

Mr. Glover did his own binding, and the following fine hand-bound volumes are offered: California Chess Reporter 1951 to 1954; Chess Review 1944 to 1954 (except 50-51); Chess Correspondent 1939-44 and 1946-48. There are a total of 17 hand-bound volumes - three of The Reporter, eight of Chess Review, and six of Chess Correspondent.

LADY FOOZLE'S COLUMN

This department might as well be called Keeping Up With The Burgers, for in addition to the report that Bob and Theresa Burger are returning to California this summer - to stay - the following just arrived:

"Among other things, it's a girl! An official entry in the register at Nyack Hospital, but really just a stowaway. A deflection of 7 lbs. 4 oz., a calibration of 20 inches. A future celebrant of many March 27ths to come. To Eileen, Marlene, and Robert Eugene, she's an outrageous pretender - to the throne. Because they know that even though her name is Diana Una Burger and not McNamara she's the leader of the band."

CORRESPONDENCE: Sonja Graf Stevenson writes not us, but Jerry Spann, president of the U.S. Chess Federation. But we are mentioned too, and feel entitled to take this liberty with someone else's correspondence in the interest of American chessplayers.

"Dear Jerry:

"Just let me chat with you about the seemingly ordinary things of life. Earnestly, I can assure you again that I am delighted that you became the President of the U.S.C.F.

"Remember how we talked in the U.S. Open in Long Beach 1955, in Oklahoma City 1956 and Cleveland 1957. In my sentiments you are much more than an important figure in the American chess world. Indeed, I consider you more as a personal friend. Family links are made by nature without our affirmation or consent, while friends we choose ourselves.

"My memories towards you and also McClain are delightful, genuine jewels on the bracelet of my life. I have made it my principle to take out of the past only the beautiful adventures and things, while the present is logically the springboard for the future.

"As you may have observed, I am also a fighter and optimism is my greatest asset, my most fervent conqueror.

"All my life I traveled alone, until ten years ago I landed in the secure haven of marriage. Before that I used and handled the wooden chess pieces as my goal of education, which led me to a certain fame. The hard way I learned to conquer defeats and take victories in stride. On the big board of life itself, I compared the chessmen with living men and human beings. Concentration... calculations... courage... the imposed silence during games... sacrifices... conquerings... and defeats were the constant companions of my lonely career as a professional chessplayer, while I traveled alone through most continents of this big, cruel and wonderful world.

"With pleasure I remember how you showed me in Oklahoma City that you believed in my chess ability by inviting me to the Rotary meeting. I thought that was darned understanding and lovely of you. You also almost forced the reporter there to take an interview and publish it. That gives me a terrific amount of joy and I knew, when you gave the decent embrace by meeting me in Oklahoma and Cleveland, you really were glad to see me again. All these linger vividly on in my memory.

"Since competing in the last national tournament in Hollywood, where Mrs. Gresser and I earned the right to represent the U.S.A. in the Candidates Tournament in Holland, I study every day two to three hours the chess openings out of books. Confidentially, until then I had never looked into a chess book, but I realized suddenly that it is not enough to be gifted only. I want to play well overseas

in that, for me, so important tournament. If there in Holland, I could make an excellent score, imagine...it would be in reach of me to bring the Women's World Title to the United States. Isn't that a great goal and wouldn't that be marvellous!

"Now if that important Candidate's Tournament would be held in the USSR, the Russian government would pay my travel expenses, as they did when I went to Moscow. Tell me please, WHO this time will take care of that???"

"You may recall that the USCF invited me last year to compete in Holland as the strongest woman chessplayer of America, but there was a catch to it...I had to find my own sponsor. You know me well enough and you also know that I am not the type of human being to go around begging; therefore instead of me the USCF sent two women who could afford to pay their own expenses.

"Now, Jerry, don't you write me back that you are not interested in the best talents of your country. An officer of the USCF once replied, when I innocently inquired who is to defray my expenses to Moscow: 'Talent does not interest us, if you have no money stay home.'

"Jerry, these are blows which deeply hurt. After all, I believe it is in the interest of America herself to compete in any sport with her outstanding forces. Don't you think so?!"

"Maybe you could propose to sponsor a simultaneous exhibition for me. I would willingly participate in earning my own money for the expenses of my voyage. Another idea that struck me as brilliant and what is only a suggestion, you might consider though, is to appoint me or anyone you think suitable, to make a drive for USCF membership, while I or the person you appoint would tour the U.S. giving exhibitions...Do answer me soon please. I am anxiously awaiting your suggestions. In deep appreciation and friendship,

"Sonja Graf Stevenson."

EDITORIAL... CALIFORNIA AND THE USCF

Our state is one of the principal constituencies in the United States Chess Federation. Both in numbers and in activity, California contributes more to national chess than merely one-forty-ninth of the sum total. In the current renaissance of the national chess organization California ought to be in the van; yet we see a drive which is spearheaded in Oklahoma (home of our president, Jerry Spann), going great guns in Wisconsin and Michigan, rolling along in Florida, Texas, New York, and other states, and sputtering in California.

THE REPORTER does not, as a matter of policy, use its pages for national propaganda. While an occasional editorial may seem

to be propoganda to outsiders, the origin of any such material always has been some local interest. We believe that our first obligation is to California readers, regardless of any national offices we may hold. Besides, there are plenty of national and international chess publications; let them cover the larger scene, while we specialize in what we're best fitted for.

But it seems to us in the interest of organized California chess to support the USCF. Aside from being a matter of national pride, of helping to finance the teams which go abroad to represent the United States (Chess Olympics, international matches, students' and women's teams), and individuals who participate in the international events to which they have gained entry (candidates' tournament, junior championship, women's candidates' tournament, etc.), there is a simple, selfish interest: Our stars are among those who are being left out. Kashdan, Evans, König and Benko head the list of California players who would be under consideration in choosing the next team to face the Russians. Sonja Graf is qualified to play in the women's candidates tournament. Gil Ramirez, Bobby Cross and Larry Remlinger are prospects for students' and junior events.

As matters now stand, these events are dying for lack of funds.

If all our readers would join the USCF, it would help our national organization to become big enough and strong enough to guarantee these events.

It is not only in the star category that the lack of a financially strong national body hurts — it is a drawback to all chess promotion. Regional tournaments and team matches, better ratings, teaching and exhibitions by masters — these and many more things would come from a strong USCF. Membership is \$5 per year, which includes a subscription to that fine bi-monthly chess newspaper, Chess Life. Fred Wren, the Old Woodpusher, is editor.

| |
|---|
| <p><u>U.S. JUNIOR CHAMPIONSHIP</u> <u>HOMESTEAD, FLORIDA</u> <u>JULY 8-12, 1958</u> <u>Eligibility:</u> Born on or after July 9, 1958. <u>Housing:</u> Free housing <u>Entry Fee:</u> None, except USCF membership (\$5). for all Californians! <u>Prizes:</u> Scholarships, trophies, merchandise. (also free swimming). <u>Winner will be seeded to next U.S. Championship</u> (if master rated). <u>Schedule:</u> 9 rounds in 5 days. First round 7:00pm July 8; late entries accepted until 9:45am July 9, but late arrivals must make up first round by playing an extra game on July 9. Write Bob Eastwood, 304 S. Krome Ave., Homestead, Florida, for details. <u>Note:</u> Visitors to Florida are invited to compete in the Southern Championship at Sarasota, July 3-6. Events for both adults and juniors.</p> |
|---|

WEST VALLEY VS. SANTA MONICA, 1957

Game No. 419 - Ponziani
 White Black
 S. Sholomson N. Lessing

1. P-K4 P-K4
 2. Kt-KB3 Kt-QB3
 3. P-B3 P-B4
 3...P-Q4 is usual here, but evidently Black has prepared something for his opponent. The text turns the game into a sort of Vienna Opening.

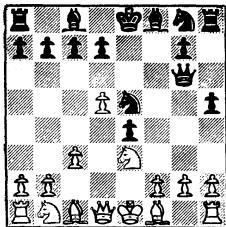
4. P-Q4
 The best move.

4. ... BPxP
 5. KtxP Q-B3
 Or 5...Kt-B3; 6. B-KKt5, Q-K2.
 6. Kt-Kt4 Q-Kt3
 7. P-Q5 P-KR4

Departing from the "book." If 7...Kt-Q1; 8. B-K2, B-B4; 9. O-O, Kt-B2 with equality.

8. Kt-K3
 A natural-looking move, but Black's QKt now dominates the position. If 8. PxKt, PxKt; 9. PxKtP, BxP and White has counterplay in spite of Black's superior development.

8. ... Kt-K4



9. Q-Q4 P-Q3
 10. Kt-Q2 Kt-KB3
 11. QKt-B4 KKt-Q2
 12. P-QKt4 B-K2
 13. B-Kt2 O-O
 14. Q-Q2 B-R5
 15. KtxKt

White is helpless. If 15. P-Kt3, Kt-B6ch wins the Q.

15. ... KtxKt
 16. Kt-Q1 B-Kt5
 17. B-K2 BxB
 18. QxB QxP
 Resigns.

GOLDEN GATE VS. U.C., 1958

Game No. 420 - White K's Ind.

White Black
 C. Capps J. Hursch

(Notes by Jack Hursch)

1. Kt-KB3 P-QB4
 2. P-KKt3 P-Q4

I hadn't played for so long that I'd forgotten what defense I liked best — so I occupied the center to let come what may.

3. B-Kt2 Kt-KB3
 4. O-O Kt-B3
 5. P-Q4

A gruenfeld in reverse?

5. ... B-B4
 6. P-B3 P-K3
 7. QKt-Q2 P-KR3

To provide a retreat for the B, but played mainly because I wasn't sure how best to proceed.

8. PxP BxP
 9. Kt-Kt3 B-Q3
 10. QKt-Q4 B-K5
 11. KtxKt PxKt
 12. Q-R4 Q-Q2

My position is coming out nicely against my redoubtable opponent.

I determined to play carefully for the end game.

- 13. B-R3 O-O
- 14. Kt-Q4 QR-Kt1

A blunder? An oversight maybe, but it led to a beautiful game.

- 15. QxBP Q-K2
- 16. Q-R4 KR-B1
- 17. R-K1

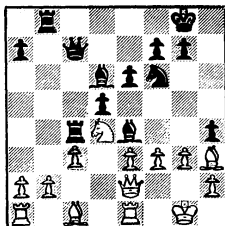
Not 17. Kt-B6 because of ...Q-Q2.

- 17. ... R-B5
- 18. Q-Q1 Q-B2

The greatest threat to my pleasant position is P-B3 - P-K4. Now

19. P-B3 would be answered by 19...BxKtP; 20. PxB, QxPch; 21. B-Kt2, B-B4. Or if 20. PxB, BxPch; 21. K-R1, KtxP.

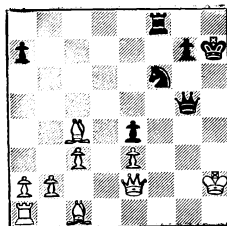
- 19. P-K3 P-KR4!
- 20. Q-K2 P-R5
- 21. P-B3



- 21. ... PxP
- 22. PxB PxPch
- 23. K-Kt2 PxB
- 24. KtxP

This combination was a surprise, but didn't change anything.

- 24. ... PxKt
- 25. BxPch K-R2
- 26. BxR Q-B4
- 27. R-R1 R-KB1
- 28. RxPch BxR
- 29. KxB Q-KKt4



- 30. B-K6 Q-K4ch
- 31. K-Kt2 QxB
- 32. B-Q2 Kt-Kt5
- 33. R-R1ch K-Kt1
- 34. R-KB1 RxB
- 35. KxR Kt-K4

We had the usual time trouble to move 40, but the ending plays itself.

- 36. Q-R5 P-Kt3
- 37. Q-Kt5 Q-B2ch
- 38. Q-B4 Q-B5ch
- 39. K-Kt2 Q-K7ch
- 40. Q-B2 Q-Kt5ch
- 41. Q-Kt3 Q-K7ch
- 42. Q-B2 Q-Q8
- 43. Q-K1 Q-B6ch
- 44. K-R2 Q-R4ch
- 45. K-Kt2 Kt-B6
- 46. Q-Kt3 KtxB
- 47. Q-Kt8ch K-R2
- 48. QxPch K-R3
- 49. Q-Q4 Q-K7ch
- 50. K-R3 Q-B6ch
- 51. K-R2 Kt-B8ch
- 52. K-Kt1 KtxP

Resigns.

STEINER MASTERS TOURN., 1958

Game No. 421 - Sicilian

- | | |
|-------------|-----------|
| White | Black |
| H. Borochow | Z. Kovacs |
| 1. P-K4 | P-QB4 |

2. Kt-KB3 Kt-QB3
 3. P-Q4 PxP
 4. KtxP Kt-B3
 5. Kt-QB3 P-Q3
 6. B-KKt5 P-K3
 7. Q-Q2 P-QR3
 8. O-O-O B-Q2
 9. P-B4 B-K2
 10. Kt-B3 P-Kt4
 11. B-Q3 P-Kt5
 12. Kt-K2 Q-B2
 13. K-Kt1 P-K4
 14. P-B5 P-QR4
 15. P-KR3 Kt-R2
 16. P-B4! B-B3
 17. Kt-Kt3 Kt-B1
 18. KR-K1 Kt-Kt3
 19. R-QB1 QKt-Q2
 20. B-K3 Q-Kt2
 21. B-KB2 B-Q1?
 22. P-B5! PxP
 23. BxP KtxB
 24. RxxKt1 Kt-Q2
 25. R/5-B1 O-O
 26. B-B4 Kt-B3
 27. Q-QB2 B-K1
 28. Kt-B1 P-R5
 29. KtxP P-Kt6
 30. PxP PxP
 31. QxP Q-R2
 32. P-Kt4 B-R5
 33. Q-Q3 Q-K2
 34. KtxP! RxxKt
 35. P-Kt5 K-R1
 36. PxKt RxB
 37. Q-Q5 R-KB1
 38. QxR Q-Kt5
 39. Q-Q5 B-KKt4
 40. Kt-K3 R-Q1
 41. Q-K6! R-QKt1
 42. P-Kt3 Q-R6
 43. R-B3 B-Q2
 44. QxB R-R1
 45. B-Q5 Q-R7ch
 46. K-B1 BxKtch
 47. R/LxB Q-R8ch
 48. K-Q2 R-R7ch
 49. K-Q3 Q-Q8ch
 50. K-B4 Q-KB8ch
 51. K-Kt4 Resigns.

CASTLE CHESS CLUB, 1957Game No. 422 - Bird's

| | White | Black |
|----|------------|-----------|
| | G. McClain | E. Hoffer |
| 1. | P-KB4 | P-Q4 |
| 2. | Kt-KB3 | Kt-KB3 |
| 3. | P-KKt3 | P-K3 |
| 4. | B-Kt2 | P-B4 |

This simple but strong development (see Game No. 420) is almost enough to make White give up the opening.

| | | |
|----|-------|-------|
| 5. | O-O | Kt-B3 |
| 6. | P-Q3 | B-Q3 |
| 7. | Kt-B3 | P-Q5 |
| 8. | Kt-K4 | |

Or 8. Kt-B1 to be followed by Kt-Q2-B4.

| | | |
|----|------|-------|
| 8. | ... | KtxKt |
| 9. | PxKt | P-K4 |

To stop 10. P-K5, but White's play is on the KB file.

| | | |
|-----|-------|-------|
| 10. | P-B5 | B-Q2 |
| 11. | P-QR3 | P-QR4 |
| 12. | P-K3 | P-R5 |
| 13. | PxP | BPxP |
| 14. | P-B3 | B-B4 |
| 15. | K-R1 | P-B3 |

Black delays castling and weakens the KB2-KR4 diagonal.

16...PxP would keep the White Kt blocking Q-R5ch.

| | | |
|-----|--------|-------|
| 17. | KtxB | KtxKt |
| 18. | Q-R5ch | K-K2 |
| 19. | B-Q2 | |

Black had counted on ...Kt-Kt6 to get rid of this B, but mate is threatened.

| | | |
|-----|-------|-------|
| 19. | ... | Kt-B3 |
| 20. | QR-B1 | |

Threatening RxxKt.

| | | |
|-----|------|------|
| 20. | ... | Q-K1 |
| 21. | Q-K2 | Q-B2 |

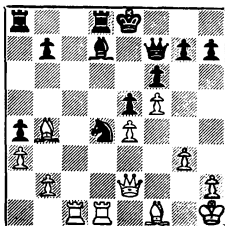
22. KR-Q1 KR-Q1

23. B-B1

The entry of the KB gives Black more problems.

23. ... Kt-Q5

24. B-Kt4ch K-K1



25. RxKt! PXR

26. P-K5 B-B3ch

27. RxB! PXR

28. P-K6 Q-Kt1

The point of the double exchange sacrifice — the Q is out of the game.

29. Q-B4 KR-B1

30. B-Kt2 R-B2

31. BxPch K-Q1

32. P-K7ch Resigns.

MECHANICS' INST. VS. U.C., 1958

Game No. 425 - Ruy

White Black

L. Boyette R. Smock

1. P-K4 P-K4

2. Kt-KB3 Kt-QB3

3. B-Kt5 P-QR3

4. B-R4 P-Q3

5. O-O B-Q2

6. Q-K2 B-K2

7. P-B3 Kt-B3

8. B-B2 O-O

9. P-Q4 R-K1

10. R-Q1 Q-B1

11. B-K3 B-Q1

12. QKt-Q2 B-Kt5

13. Kt-B1 PXP

14. BXP KtxB

15. PxKt P-Q4

16. P-K5 B-R4

17. Kt-K3 Kt-K5

18. KtxP Kt-Kt4

19. B-K4 Q-Kt5

20. R-K1 P-QB3

21. Kt-B3 Kt-R6ch

22. K-R1 Kt-B5

23. Q-B1 B-QKt3

24. P-Q5 PXP

25. KtxP B-R4

26. P-KR3 KtxRP

27. PxKt QxKtch

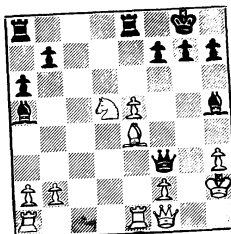
28. K-R2 Resigns.

USCF membership dues, including
subscription to Chess Life:
One Year: \$5.00

Subscription rate of Chess Life
to non-members:
One Year: \$3.00

Make checks payable to:
THE UNITED STATES CHESS FEDERATION

Mail to: Kenneth Harkness
80 East 11th Street
New York 3, N.Y.



LEAVES OF CHESS — a journal of scaccography

We have intended for some time to write something nice about this new magazine. It is now in its second year, and we can't wait any longer for the time to do this properly. Just take our word for it, if we don't seem to prove our point. It is delightful!

Leaves of Chess, Box 158, Cathedral Station, New York 25, is edited and published by O. Southard, son of Dr. E. E. Southard. It is witty and erudite. It is full of chess miscellany and trivia (the kind of material we always forget and can't seem to find when we want it), as well as solid news and games. In recent issues we see games from the match Fischer-Cardoso, New York 1957; games from the U.S. Championship recently concluded; games from Russia during the 1920s, an end game study by Bronstein, remarks by Alekhine, Capablanca and Lasker about themselves and others, and articles — in facsimile! — about chess in Japanese, German and French.

An impression of the magazine's quality may be had from the following excerpts from letters to the editor:

"A reader in Hingham, Massachusetts, writes that we sent her to the dictionary. Now we happen to know (though we have never met her) that she has a Sanskrit lexicon, but apparently she does not allude (though she may have referred) to it, since she adds that we are seemingly not a minimifidionist; which we take it is an English word, dropped with scarcely perceptible curtsy (such as a mocking-bird might make in her courtship), in delicate tribute to those who have a firm faith in the ones who still lack it in themselves. Be this as it may, the song is very pleasing in the editorial ear."

"In response to a request for reminiscences of E. E. Southard, Dr. K. Menninger of Topeka, Kansas, writes (in part) as follows: 'Dr. Southard and I used to leave the Boston Psychopathic Hospital sometimes about 5 o'clock in the evening and walk over to the Huntington Avenue subway and go downtown. Sometimes we would go to Durgin Park's and have dinner and talk about psychiatry. But sometimes he would say, "Let's go and wash our minds." By this he meant go to the Boston Chess Club and play a game with each other or someone else...'

"It may be seen that during the intervening forty or fifty years, the concept of washing the mind has wandered somewhat from its pristine sense."

Leaves of Chess is \$1 per year. It is highly recommended.

SEND THE U.S. TEAM TO MUNICH!

The United States will send a team to the Chess Olympics, to be held in Munich September 29-October 23. A minimum of \$5,000 will be raised by the U.S.C.F. and the A.C.F., jointly.

Operation Shoestring is now under way, whereby 25 persons will raise \$100 each for the U.S.C.F. portion of the expense fund. In California, give your contributions to:

Mrs. Lyn Henderson
1561 Linda Crest Drive
Beverly Hills, Calif.

Mr. Guthrie McClain
244 Kearny Street
San Francisco 8, Calif.

REPORTER TASKS:

This being a double number of THE REPORTER, we offer four Tasks. The first two, Nos. 129 and 130, are clever "self-mates." In each problem, White moves first, as usual, and forces Black to mate White on Black's third move.

No. 129 is a difficult self-mate by a young player at the Manhattan Chess Club in New York, Daniel Levine. We saw and solved this problem during a recent trip to New York, but we are ashamed to tell how long it took us. But we are in good company, since several very strong players failed to solve it. Young Bobby Fischer, U.S. Chess Champion, declared, and bet (!), that it had no solution!

No. 130 is by the genial editor of "Chess Review," Mr. I. A. Horowitz. The problem has a beautiful and very satisfying series of symmetrical mates. It is not generally known that Horowitz is a great admirer of chess problems, and a very clever composer.

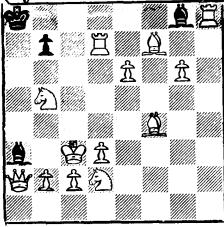
Tasks Nos. 131 and 132 are not-too-difficult orthodox 3-movers. No. 132 is by the late A. J. Fink of San Francisco, who described the problem as a "warm-weather light-weight."

Nos. 129 and 130 are 10-pointers. Nos. 131 and 132 carry 6 points.

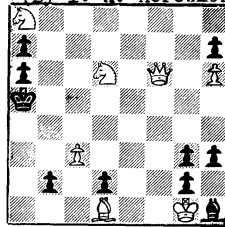
Solvers' ladder-standings are carried over.

REPORTER TASKS (continued):

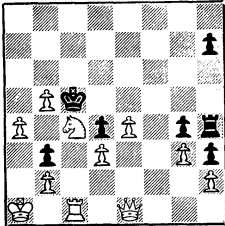
TASK No. 129
White Self-Mates in Three
(By Daniel Levine)



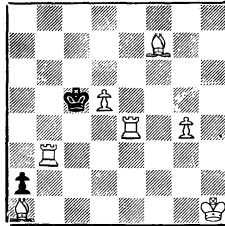
TASK No. 130
White Self-Mates in Three
(By I. A. Horowitz)



TASK No. 131
White Mates in Three



TASK No. 132
White Mates in Three



SOLUTIONS: No. 125 (R.M. Kofman): 1. Q-Kt1.
No. 126 (O.I. Tabidze): 1. Kt-B1.

All correspondence relating to problems should be sent to:

Dr. H. J. Ralston
184 Edgewood Avenue
San Francisco 17, Calif.