

64 Chess Clubs
And Organizations

CIRCULATION
451 Chess Players

51 Chess Publications
and Libraries



SCACCHIC VOICE

Central California's Chess Magazine
And
Official Organ Of The
Central California Chess Association
(An Affiliate of the United States Chess Federation)

MARTIN E. MORRISON

Editors

. ELWIN C. MEYERS

December 1969-January 1970
Volume II
Numbers viii-ix



SCENE DURING ROUND THREE OF THE CENTRAL CALIFORNIA CHESS ASSOCIATION'S USCF CLASS CHESS TOURNAMENT AT CONCORD (6-7 SEPTEMBER). Jude F. Acers (1. Pr.), a USCF Master from San Francisco, topped the Master/Expert/A Division with a perfect 5-0 score. His opponent in the photograph, Gary L. Pickler, of Danville, placed second in that division with a $3\frac{1}{2}$ - $1\frac{1}{2}$ score, thereby winning the top prize of \$30 (Mr. Acers declined his prize). To Mr. Acers's left is Donald W. Clapp, of Lafayette (sixth in the B Division), and his opponent, Dennis F. Claudio, of Richmond (eighth in the B Division). At the far table Charles A. Maddigan, of Oakland (seventh in the Master/Expert/A Division), plays Garland L. Brinkley, of Sacramento (fifth in the Master/Expert/A Division). The event drew a record 56 players. /For further coverage, v. "News" Section infra./ --Photograph by Richard R. Sherman. C.C.C.A.

TOURNAMENT CALENDAR

15-16	NOVEMBER	THIRD ANNUAL SAN FRANCISCO OPEN CHESS TOURNA- MENT	USCF, CSCF	SAN FRANCISCO
24	November	Simultaneous Chess Exhibition by USCF Master Kenneth Fitzgerald	-	Hayward
27-30	November	American Open	USCF	Santa Monica
end	November	1969 Chess Championship Tournament (tentative)	CFNC	Novato
early	December	Second tournament at Chabot (tentative)	CFNC	San Lorenzo
20-21	DECEMBER	OAKLAND CHESS CLUB'S FOURTH ANNUAL SAN FRANCISCO BAY AREA AMATEUR OPEN CHESS CHAMPIONSHIP TOURNAMENT	USCF	OAKLAND
and	January	Third Annual Northern California Junior Chess Championship Tournaments/Playoff Tournament	CFNC	Various
3	JANUARY	CCCA'S REGIONAL ONE-DAY ROUND ROBIN CHESS TOURNAMENT	USCF	WALNUT CREEK
6	February	Simultaneous Chess Exhibition by International Grandmaster Larry Evans	-	Oakland
21-22	FEBRUARY	CCCA'S USCF CLASS CHESS TOURNAMENT AT BERKELEY (THE WASHINGTONIAN)	USCF	BERKELEY
1-6	March	National Open	USCF	Sparks, Nevada
22	MARCH	OAKLAND CHESS CLUB'S THIRD ANNUAL FOUR-MAN SECTIONAL CHESS TOURNAMENT	USCF, CFNC	OAKLAND
16-17	MAY	CCCA'S REGIONAL ONE-DAY CHESS TOURNAMENT AT WALNUT CREEK	USCF	WALNUT CREEK
30-31	May	Memorial Day Weekend Tournament	USCF, CSCF	Bakersfield
22	June	Eighth Annual Scholarship Chess Festival	-	Hayward
15-16	August	Oakland Chess Club's Seventh Annual Summer Tournament	CFNC	Oakland
19-20	DECEMBER	OAKLAND CHESS CLUB'S FIFTH ANNUAL SAN FRANCISCO BAY AREA AMATEUR OPEN CHESS CHAMPIONSHIP TOURNAMENT	USCF	OAKLAND

∫Tournament Organizers: Please let us know as soon as possible of tentative or definite tournament dates, so that we may be able to reserve them for you in the "Tournament Calendar." Details for many tournaments will be found in the "News" section. THE CCCA'S AND CCCA AFFILIATES' USCF TOURNAMENTS ARE CAPITALIZED IN THE "TOURNAMENT CALENDAR" FOR MEMBERS' SPECIAL CONSIDERATION.—EDS.∫

NEWS

Acers, Pickler Victors at Concord

At the Central California Chess Association's USCF Class Chess Tournament at Concord, held on 6-7 September, a record 56 players competed in a five round Swiss System directed by Martin E. Morrison and Richard R. Shorman. Jude F. Acers, of San Francisco, flew through the top division with a perfect 5-0 score. Gary L. Pickler, of Danville, went home with the Expert/A prize of \$30 with a 3½-1½ score; Harry Radke, of San Jose, William F. Grey, of Charlottesville, Virginia, Everett L. McNally, of Hayward, and Garland L. Brinkley, of Sacramento, all split the second- and third-place prize money, pocketing \$4.37 each.

In the B Division Frank Berry, of Berkeley, had a clear 5-0 victory and won \$30 also. David F. Betanco, of Sunnyvale, and Duncan D. Campbell, of Orinda, split the second and third prizes for this division, receiving \$8.75 each. Richard Flink, of Castro Valley, won the C/D/E Division title and \$30 by scoring 4½ points, inching out Schulyer W. Baiiy, of Sacramento and Lawrence Prink, Jr., of San Jose, who won \$8.75 each by the splitting of second and third prizes.

This excellently organized tournament was a tribute to the diligence of Mr. Paul Westerline, former President of the Concord Chess Club, who was in the process of moving to Southern California on that very weekend. The tournament was a fitting close to a dedicated career of chess promotion in Contra Costa County.

Central California Chess League Regretfully Disbanded

We are extremely sorry to report that the Central California Chess League (CCCL), long a bulwark of USCF activity in the Central Valley of California, was disbanded by a vote of its official delegates, meeting at the League's annual September conclave in Oakdale. As reported by William T. Adams, delegate and USCF Director, and by C. Jeffrey Smith, delegate and President of the Oakdale Chess Club, a continued decline in League participation (this year's meeting attracted delegates from only four clubs) necessitated the disbanding. It was also reported that the number of chess clubs in the Central Valley area had also been decreasing.

Editors
Central California
Chess Association
c/o Post Office Box 1622
Oakland, California 94604
Telephone: (415) 582-1973

Scacchic Voice is edited and published bimonthly (with monthly supplementary issues as needed) by Martin E. Morrison and Elwin C. Meyers, Editors, CCCA, in accordance with Article IV, Section iv (f) of the Bylaws of the CCCA, which directs the Editors to "edit and publish the official organ of the CCCA and all business proceedings of the CCCA, to provide a system of communication among the members and affiliates of the CCCA." Every member of the CCCA, i.e., every member of a chess club or organization affiliated to the CCCA, automatically receives a Scacchic Voice subscription mailed to his home gratis.

The CCCA is a nonprofit, democratic organization and an affiliate of the United States Chess Federation. The objects of the CCCA are: "(a) to serve as a regional coordinator of chess activities, clubs, and players; (b) to conduct or sponsor tournaments, leagues, matches, and other forms of chess competition, alone or in conjunction with other chess clubs or organizations; (c) to maintain a system of ratings of the members of the CCCA to supplement those of the USCF; (d) to provide an organ of communication among the members and affiliates of the CCCA, to be published not less than bimonthly; (e) to support the affiliates of the CCCA in every feasible way; (f) to promote the game of chess and the USCF" (Article II, Section i, of the Bylaws of the CCCA). Any Central California chess club or organization supporting these objects is invited to apply for affiliation to the CCCA, with benefits for its members which include a Scacchic Voice subscription, a USCF-CCCA rating, discounts on chess books, equipment, and USCF memberships, and full privileges of participation and voting at CCCA business meetings.

NONMEMBER SUBSCRIPTIONS: \$2.00 per annum.

ADVERTISEMENTS: \$5.00 per eighth page per issue. \$20.00 per insert per issue. (This cost is one cent cheaper per piece for mailing tournament circulars, etc., than postage costs alone.) Classified advertisements: 5¢ per word per issue on any subject.

The opinions expressed in the editorials and by contributors are those of Scacchic Voice's Editors or those of the respective contributors. They do not necessarily constitute an official policy of the CCCA or any of its affiliates. All unsigned articles were written by the Editors.

Material submitted (including photographs) by readers is encouraged and becomes the property of the Editors. Each CCCA affiliate is responsible for sending its own news material to the Editors. To be assured of consideration for publication, news and tournament data should be received at the above address thirty days preceding the month of issuance. Other material (including columns) should be received at the above address sixty days preceding the month of issuance. Material should be typewritten, following the style used in this magazine.

Comments from readers on any feature of this magazine will be appreciated and will be answered. Letters for publication in the "Letters to the Editors" column should be marked "For Publication." Correspondence to the Editors should be sent to the above address; that to any other member of the staff, to that member, in care of the Editors.

Material published in this magazine may be used by other publications if credit is given to Scacchic Voice (including its Editors and address) and if the Editors are sent a copy of the issue containing the material.

CCCA OFFICERS

CHAIRMAN

vacant

SECRETARY

c/o P. O. Box 1622, Oakland 94604

TREASURER

5315 Macdonald Avenue, El Cerrito 94530

LEAGUE DIRECTORS

320 California Street, San Francisco 94104

27858 Tampa Avenue, Hayward 94544

RATING ADMINISTRATOR

23716 Lynn Street, Hayward 94541

EDITORS

c/o P. O. Box 1622, Oakland 94604

c/o P. O. Box 1622, Oakland 94604

MARTIN E. MORRISON

582-1973

LEONARD F. TROTTIER

233-1595

FRANK V. LEFFMAN

391-2720, ex. 747

RICHARD R. SHORMAN

782-5029

EVERETT L. MC NALLY

783-8763

MARTIN E. MORRISON

582-1973

ELWIN C. MEYERS

811 Brown Street, Martinez 94553

Club Coordinator: Everett McNally. Standing Clock Committee: Leonard F. Trotter, Frank V. Leffman, Martin E. Morrison. Standing Tournament and Club Relations Committee: Martin E. Morrison, Harold Barnett, Everett L. McNally, Elwin C. Meyers. USCF Directors: William T. Adams, Martin E. Morrison, E. H. Mueller, Frank M. Olvera, Sr., Robert L. Cyler, Gunnar H. Rasmussen, Manuel Rivera. CSCF Directors: Martin E. Morrison, Gunnar H. Rasmussen.

Members should feel free to contact their officers regarding any aspect of chess business. They will be happy to serve you.

CCCA 1969 SUMMER LEAGUE: FINAL RESULTS

<u>Eastern Division</u>				<u>Western Division</u>												
<u>LIVERMORE</u>	1	X	1 1 1 1 1/5	-0	Oakland A	1	X	1 1 1 1 1/5	-0							
<u>DVI-C</u>	2-3	0	X	0 1 1 1/3	-2	Bechtel	2-3	0	X	0 1 1 1/3	-2					
<u>Fremont</u>	2-3	0	1	X	1 0 1/3	-2	<u>DVI-A</u>	2-3	0	1	X	0 1 1/3	-2			
<u>DVI-B</u>	4	0	0	0	X	1 1/2	-3	Hayward	4-5	0	0	1	X	0 1/2	-3	
<u>Concord</u>	5	0	0	1	0	X	1/1 1/3-3 1/4	Oakland B	4-5	0	0	0	1	X	1/2	-3
<u>Martinez-W. Creek</u>	6	0	0	0	0	1/2	X/ 1/2-4 1/4	Orinda	6	0	0	0	0	0	X	0/5

In case of ties for the winning trophy, the rules state that the trophy goes to the team with the "lowest average numerical rating over the season." Livermore's average numerical rating was 1578, Oakland A's, 1603; thus, Livermore wins the league and the trophy. See page 16 infra for photograph.

CCCA 1969-70 LEAGUE: A 110% INCREASE OVER LAST YEAR

The CCCA 1969-70 League season has begun play under League Directors Frank V. Leffman and Richard R. Shorman with a record 28 teams divided into USCF and Independent categories. This represents a 110% increase over last year's 13 teams. In addition, for the first time in Central California, a choice has been offered to clubs and players between a fully-rated USCF category and a non-rated Independent category. Play will proceed from November to April, and playoffs will commence during the first in May. The divisions and the team captains are as follows:

<u>USCF Division I</u>	<u>USCF Division II</u>	<u>Independent Div. I</u>	<u>Independent Div. II</u>
<u>DVI A: Lawrence</u>	<u>Concord: Frank M.</u>	<u>Oakland: Rene Remy</u>	<u>Vallejo: Gunnar H.</u>
Syphert	Olvera, Sr.	and Louis Soto	Rasmussen
<u>Livermore A:</u>	Alameda: c/o	Newark: E. C.	Walnut Creek: Saleh
George Roust	Gaylord Orr	Gushwa	Mujahed
<u>San Jose: Fred W.</u>	Bechtel: William	Fremont: David	Martinez: Ralph B.
Crofut	M. Dickerson	Flack	Swanson
<u>Fremont: Hans</u>	Oakland A: Charles	Alameda A: c/o	Richmond: Peter M.
Poschmann	A. Maddigan	Gaylord Orr	Brown, Jr.
<u>Hayward: Robert</u>	Oakland B: Craig	Alameda B: c/o	Santa Rosa A: Lee
Boles	Barnes	Gaylord Orr	Henderson
<u>DVI B: Charles</u>	Mechanics' Inst.:	Livermore: Glenn	Santa Rosa B: Lee
Comstock	Alan W. Bourke	Hage	Henderson
<u>Livermore B:</u>	Orinda: Duncan D.	Orinda: John	
Wesley A. Nelson	Campbell	Wadsworth	

WHAT'S NEW IN THE CHESS LAWS FIELD?

By MARTIN E. MORRISON
Scacchic Voice Editor

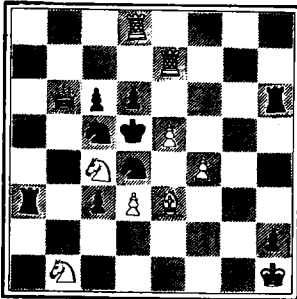
A great deal of interest has been occasioned in this field, partially by the recent articles run in Scacchic Voice and my articles in other chess publications. Nationally known chess organizer Dr. George V. D. Tiers, recent candidate for USCF Vice President, sent an informative letter explaining and discussing several laws problems which arose at this year's US Open, and James R. A. Schroeder, of the Cleveland Chess Bulletin, submitted a lengthy and very perceptive one on the subject of the laws in general. We regret that space limitations prevent their being published here now, but we are most appreciative for their contributions on this vital subject.

In addition, USCF Master Jude F. Acers has sent us his version of the 1969 California State Championship, saying that he "never sealed a move at all, not even having an envelope for the purpose in the room." On the same theme, Mr. Virgil M. Kimm, an eastern chess editor, wrote that in the crucial game Schutt vs. Blohm, reported upon earlier, both players should be forfeit for agreeing to a draw before a "real contest" had begun.

MATING MAZE

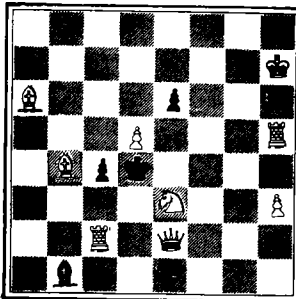
By RICHARD LEE

Scacchic Voice Problems Columnist



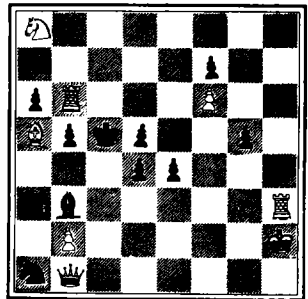
No. 60

White mates in two.



No. 61

White mates in two.



No. 62

White mates in three.

*

Last month I received eight entries with identical, but incorrect solutions to Problem No. 59: 1 RxBch, RxB (most answers labeled this move as forced!); 2 N-N2 mate. The uniqueness of this problem lies in the fact that most persons overlook the refutation to 1 RxBch: 1...PxB/N! The promotion to a knight stops the mate. If he obtains anything other than a knight, Black will be mated.

Problem No. 60 has two solutions, and entries must have all four solutions to win a prize. Persons may guess at No. 62 and still be eligible for a prize if no entries contain the solution to No. 62.

Remember to submit your solutions. There is nothing to lose.

*

SOLUTIONS TO LAST ISSUE'S PROBLEMS: No. 57, N-B6; No. 58, N-B3; No. 59 N-K2.

AFFILIATE NEWS

[If your affiliate is not listed, we have received no material concerning your activities. Please keep us informed of all your events for publication.—EDS.]

*

CONCORD . . . A special organizational meeting was held on Friday, 22 August, because Paul Westerline, club president, was about to move to Southern California. Three officers of the CCCA, Everett L. McNally, Elvin C. Meyers, and Martin E. Morrison, attended at the invitation of Mr. Westerline to give organizational assistance and advice. Mr. McNally, CCCA Club Coordinator, has agreed to continue to assist the club for the near future. New officers of the club determined at that meeting were: Charles Vail, President; Frances Davis, Secretary; George Marcus, Treasurer and Publicity Director; Arwood Wells, Rating Administrator; Frank M. Olvera, Sr., Team Captain.

DEUEL VOCATIONAL INSTITUTION . . . William H. Romero is writing a column on chess for the Institution's newspaper, Crossroads. In the latest number, he appeals for new club members and details the Chess Interest Group's results in the CCCA 1969 Summer League. The club has developed many skilled and hard-working officers. Besides Mr. Romero, who serves as Public Relations Officer, the officers are: Lawrence Syphert, Chairman; Charles Comstock, Vice-Chairman and Rating Administrator; R. Larson, Secretary and Membership Chairman. Ed D. Ulm and P. O. Chandler sponsor the Group.

HAYWARD-OAKLAND . . . Co-sponsored a simultaneous chess exhibition by USCF Master Jude F. Acers on Friday, 24 October, at the Oakland Chess Club. Thirty-one players challenged Mr. Acers, and four of these defeated him. The winners were George Harris, of Berkeley, Charles A. Maddigan, of Oakland, Steven Quen, of Alameda, and Michael Weber, of Alameda.

MONTEREY PENINSULA . . . The June Rapid Transit Tournament was won by Bernard Lanson, and the July, by newcomer Michael Ewell from the Defense Language Institute.

OAKLAND . . . The Oakland Chess Club will not meet on Friday, 28 November, 26 December, and 2 January because of the Thanksgiving, Christmas, and New Year holidays.

WALNUT CREEK . . . The Walnut Creek Chess Club, under the presidency of Saleh Mujahed, is now teaching a number of children to play chess. The youngsters are ranging in age from the second grade to high school.

GAMES COLUMN
By RICHARD R. SHORMAN
Scacchic Voice Games Columnist
(CCCA League and Publicity Director)

[This is the first time that this game has appeared in the US with notes by Yuri Kotov.---EDS.]

Former world champion Mikhail Tal entered the tournament hall, suitcase in hand, straight from the airport, to compete in the 37th USSR Championship. Defending champion Lev Polugaevsky, playing the white pieces against him, rolled off a complex combination in a Tarrasch Defense to the Queen's Gambit Declined almost without thinking.

Tal defended energetically, but his imagination was no match for Polugaevsky's prepared analysis.

"That's the way it goes," remarked Spassky upon hearing of Tal's resignation. "We had prepared that line for use against Petrosian. Poor Tal was killed by the ricochet."

What a game! Notes by Yuri Kotkov in Sovetsky sport, 9 September 1969.

Event and date: XXXVII USSR Championship, September 1969.

White: Lev Polugaevsky.

Black: Mikhail Tal.

Opening: Queen's Gambit Declined.

1 P-QB4	N-KB3	14 B-Q3	B-N2	27 R-Q2! (g)	R-B3
2 N-QB3	P-K3	15 KR-K1	R-B1 (b)	28 RxB	R-K1? (h)
3 N-B3	P-Q4	16 P-Q5! (c)	PxP	29 N-R6ch	K-R2
4 P-Q4	P-B4	17 P-K5	N-B5	30 N-B5	R/3xP
5 PxQP	NxP	18 Q-B4	N-N7	31 RxB	RxB
6 P-K4	NxN	19 BxPch!	KxB	32 R-B2	R-B3
7 PxN	PxP	20 N-N5ch	K-N3	33 R-K2!	B-B1
8 PxP	B-N5ch	21 P-KR4! (d)	R-B5	34 R-K7ch	K-R1
9 B-Q2	BxBch	22 P-R5ch	K-R3 (e)	35 N-R4 (i)	P-B4
10 QxB	O-O	23 NxPch	K-R2	36 N-N6ch	K-N1
11 B-B4	N-B3	24 Q-B5ch	K-N1	37 RxB (j)	resigns (k)
12 O-O	P-QN3	25 P-K6! (f)	Q-B3		
13 QR-Q1 (a)	N-R4	26 QxQ	PxQ		

(a): So far, as in the sensational fifth match game between Spassky and Petrosian for the world's championship. White obtained excellent play after 13... B-N2; 14 KR-K1, R-B1; 15 P-Q5!, PxP; 16 BxP.

(b): Black seems to have held the center well enough and now appears ready for action on the queen side, but

(c): White breaches the enemy line at its most fortified point!

(d): Tal took a long time on his next move, and with good reason. If, e.g., ...NxR, then White has a forced mate with 22 P-R5ch, KxB; 23 P-N4ch, K-N3; 24 Q-B5ch, K-R3; 25 Q-R7ch, KxB; 26 Q-R5ch, K-B5; 27 Q-B5 mate.

(e): The only move. An immediate loss is 22...KxB; 23 P-N4ch, K-R3; 24 Q-R2ch!, KxB; 25 Q-R5ch, K-B5; 26 Q-B5 mate.

(f): Very strongly played. The threat is 26 P-K7, which cannot be met by 26 ...Q-K2 because of 27 R-Q2, N-R5; 28 P-R6.

(g): Moving the knight, 27...N-R5, allows 28 N-Q6, threatening 29 P-K7. Tal returns the piece.

(h): Exhausting defense takes its toll. After the game both players agreed that 28...B-B1 holds out some saving chances.

(i): Threatening 36 NxN6ch and 37 P-R6.

(j): Zugzwang!

(k): An outstanding performance by the current USSR Champion.

OPENING ANALYSIS
By EVERETT L. MC NALLY
CCCA Club Coördinator

Here is one chance in a lifetime. You can record your opening moves down in history. A chess file is being created, in which the moves, the players, and the reasons why the moves are played will be recorded on computer cards. Then, when the file is reasonably complete, every chess player will have the moves and opinions of several chess players. A reasonable fee will be charged for time rendered and for processing. In order to eliminate incomplete and vast information, only well documented moves will be filed. All information should be sent to me at the address listed on page three of this issue. Results will be published in Scacchic Voice.

BUSINESS PROCEEDINGS OF THE CCCA
 By MARTIN E. MORRISON
 CCCA Secretary

A special meeting of the Central California Chess Association was held on Friday, 12 September 1969, in the Faculty Dining Room of Lincoln Elementary School, 225 Eleventh Street, Oakland (the Oakland Chess Club's quarters). The meeting was called to order at 7:33 p.m. by the Secretary, Martin E. Morrison, the Chairman, Jerome M. Long, being absent. It was adopted by general consent that the Secretary serve as chairman pro tempore.

The total attendance for the meeting was as follows: George Marcus, Jerome M. Long, Frank M. Olvera, Sr. (Concord CC); Hans Poschmann (Fremont CC); Jerome Friedman, Richard R. Shorman (Hayward CC); Harold Barnett, Wesley A. Nelson (Livermore CC); E. C. Gushwa (Newark CC); John Gerrand, Jonathan Hale, Richard Lee, Frank V. Leffman, Elwin C. Meyers, Martin E. Morrison, Louis Soto (Oakland CC); Duncan D. Campbell (Orinda CC); Dennis Claudio, Leonard F. Trottier (Richmond CC); Lee Henderson (Santa Rosa CC); Kevin Castner, James Evans, Saleh Mujahed (Walnut Creek CC)—10 of 22 affiliates, 23 members. Nonmembers present: Willard Brauner, of Chicago; Mrs. Henderson, of Rohnert Park.

It was moved and adopted by general consent that the minutes of the previous meeting (11 July) be approved as published in the official organ.

The special order for the meeting, the establishment of rules for the 1969-70 CCCA League, was announced by the chair. It was moved by Mr. Morrison that his set of "Proposed 1969-70 CCCA League Rules" be adopted and that the motion be tabled, in order that some routine business might be considered first. The motion was tabled by general consent.

It was moved and adopted by general consent THAT THE SANTA ROSA CHESS CLUB, UPON THE APPLICATION OF LEE HENDERSON, TOURNAMENT DIRECTOR, BE AFFILIATED TO THE CCCA.

The Treasurer, Mr. Trottier, gave the following:

REPORT OF THE TREASURER OF THE CCCA
 FOR THE PERIOD 11 JULY TO 9 SEPTEMBER 1969

<u>Receipts</u>	
Balance on hand 11 July 1969	\$131.79
Bimonthly assessment of affiliates*	\$ 60.35
USCF memberships	108.00
Clocks sold	266.20
Receipts from CCCA's Adult and Junior Championship (19-20 July)	243.50
Advertizement and supplies paid back for above tournament	23.20
Profit from CCCA's USCF Class Tournament at Concord (6-7 September)	50.00
	<u>751.25</u>
	\$883.04

<u>Disbursements</u>	
USCF memberships	108.00
Rating fees for 19-20 July tournament and CCCA 1969 Summer League	19.10
19-20 July tournament supplies	3.20
For CCCA emblem construction	2.50
10 CSCF memberships from two tournaments	25.00
CSCF Berth payment	50.00
19-20 July tournament prizes	142.50
6-7 September tournament prizes (extra)	35.37
SCACCHIC VOICE expense	85.00
10 clock payments to Theodore E. Anderson	105.40
12 clock payments to Martin E. Morrison	102.00
Clock and assessment overpayment returned	3.50
Postage and insurance on clocks	2.10
	<u>6880.15</u>
Balance on hand 9 September 1969	202.89
Total	<u>8883.04</u>

*The Oakland Chess Club deducted \$2.25 from their assessment as one-half the cost of the post-office box shared with that club for the quarter October-December, as per CCCA resolution of 11 October 1968. Total CCCA membership: 304.

Mr. Morrison, Editor, asked members to be sure to turn in their questionnaires.

Mr. Long, Administrator of the Summer League, announced the Livermore Chess Club's team as the winner of the Summer League and presented the trophy.

Mr. Trottier, Chairman of the standing Clock Committee, reported that over

the period 11 July to 9 September, clock sales totaled \$226.20, and that loan, interest, postage, insurance, and overpayment returned on clocks sold totaled \$211.30, for a profit of \$54.90 (one clock was stolen).

Mr. Morrison, member of the ad hoc CCCA Adult and Junior Championship Committee, gave the final report of the committee, saying that the tournament was most successful (cf. pp. 2 and 5 of the October-November SCACCHIC VOICE) and that David L. Amkraut, of Palo Alto, won the CCCA's berth to the 1970 State Championship.

Mr. Morrison, member of the ad hoc Banquet Committee, gave the final report of the committee, saying that since Mr. Plastrik, committee chairman and originator of the idea, could not carry out his duties, the committee decided not to hold a banquet this year. He also moved for the committee the adoption of the following resolution, which was adopted by general consent: THAT MRS. JUNE PETERSON BE GIVEN THE THANKS OF THE CCCA FOR HER SPECIAL HELP ON THE COMMITTEE.

Mr. Meyers, chairman of the ad hoc Emblem and Motto Committee, gave the final report of the committee by displaying and explaining the emblem and motto decided upon and moving for the committee the adoption of the following resolution: THAT MR. FRIEDMAN BE GIVEN THE THANKS OF THE CCCA FOR HIS SPECIAL HELP ON THE COMMITTEE, AND THAT HE BE PAID \$7.50 FROM THE CCCA GENERAL FUND FOR TWO DRAWINGS AND ONE WOODEN MODEL OF THE EMBLEM AND MOTTO AND FOR PROFESSIONAL CONSULTATION.

The resolution of Mr. Meyers on the qualification to the CCCA's State Championship berth, postponed to this meeting, was announced by the chair and tabled by general consent.

It was moved and adopted by general consent THAT THE CCCA ADVISE AND CONSENT TO THE APPOINTMENT OF MR. HENDERSON AS ASSISTANT PUBLICITY DIRECTOR FOR SONOMA COUNTY.

It was moved and adopted by general consent THAT MR. T. L. BAKER BE SUBSTITUTED FOR MR. JACK D. COTTLE AS ASSISTANT PUBLICITY DIRECTOR FOR MARIN COUNTY.

It was moved and adopted by general consent THAT WHEREAS, MR. PAUL WESTERLINE, PRESIDENT OF THE CONCORD CHESS CLUB, A CCCA AFFILIATE, IS LEAVING THE AREA ON ACCOUNT OF HIS BUSINESS; AND WHEREAS, HE HAS DEVOTEDLY WORKED FOR THAT CLUB, THE CCCA, AND THE USCF FAR BEYOND THE CALL OF DUTY; AND WHEREAS, IN THE BUSY LAST DAYS OF HIS STAY IN CENTRAL CALIFORNIA HE SHOWED A GREAT SENSE OF RESPONSIBILITY IN GIVING GENEROUSLY OF HIS TIME TO SEE THAT THE CONCORD CHESS CLUB AND THE CCCA WOULD EASILY UNDERGO THE EFFECTS OF HIS LEAVING; RESOLVED THAT THE CCCA, WITH A DEEP SENSE OF GRATITUDE, EXTEND A VOTE OF THANKS TO MR. WESTERLINE ON HIS LEAVING, AND THAT MR. FRIEDMAN BE PAID TO PREPARE A COPY OF THE RESOLUTION FOR PRESENTATION TO MR. WESTERLINE.

It was moved and adopted by general consent THAT THE MECHANICS' INSTITUTE CHESS CLUB, THOUGH NOT A CCCA AFFILIATE, BE ALLOWED TO PARTICIPATE IN THE CCCA'S LEAGUES.

It was moved and adopted by general consent THAT A STANDING CCCA TOURNAMENT AND CLUB RELATIONS COMMITTEE WITH FULL POWER BE ESTABLISHED TO (1) ADMINISTER AND COMPLETELY REGULATE THE CCCA'S BERTH TO THE CALIFORNIA STATE CHAMPIONSHIP, INCLUDING MAKING TRAVEL ARRANGEMENTS FOR THE CCCA'S ENTRANT IN THE STATE CHAMPIONSHIP, (2) SET UP AND ADMINISTER TOURNAMENT OF THE CCCA WHEN THEY SEEM DESIRABLE, (3) HANDLE ALL REQUESTS FROM AFFILIATES TO USE THE CCCA'S USCF CHARTER FOR "OPEN, REGIONAL TOURNAMENTS" AND SET THE CHARGE AND REGULATIONS FOR SUCH USE, (4) ELECT, SUPERVISE, AND AUTHORIZE EXPENSES FOR A CLUB COORDINATOR WITH THE FOLLOWING DUTIES: TO TRAVEL TO AND AID ANY AFFILIATE REQUESTING ORGANIZATIONAL AID FROM THE CCCA AND TO STRENGTHEN THE ORGANIZATION OF SUCH AFFILIATES; AND THAT THE COMMITTEE CONSIST OF MESSRS. MORRISON, BARNETT, MC NALLY, AND MEYERS.

Mr. Long, CCCA Chairman, announced that because of pressing domestic affairs and an impending move from the state, he would with great regret have to resign from his office. He stated that he enjoyed working with the CCCA and wished it the best for the future. It was moved by Mr. Meyers and adopted by general consent THAT WHEREAS, MR. JEROME M. LONG HAS SERVED THE CCCA AS CHAIRMAN WITH SINGULAR DISTINCTION; AND WHEREAS, HE HAS ALSO DONE AN OUTSTANDING JOB AS ADMINISTRATOR OF THE 1969 SUMMER LEAGUE; AND WHEREAS, HE RENDERED INVALUABLE SERVICE IN THE FOUNDATION OF THE CCCA; RESOLVED, THAT THE CCCA EXTEND TO MR. LONG ITS MOST DEEPLY-FELT THANKS IN ACCEPTING HIS RESIGNATION, ITS REGRETS THAT HE MUST NOW RESIGN HIS POSITION, AND ITS BEST WISHES FOR HIM IN HIS FUTURE UNDERTAKINGS, BOTH IN CHESS AND IN LIFE; AND THAT MR. FRIEDMAN BE PAID TO PREPARE A COPY OF THE RESOLUTION FOR PRESENTATION TO MR. LONG, AND THAT MR. LONG BE GIVEN AN OVATION.

Mr. Morrison's motion on the "Proposed 1969-70 CCCA League Rules" was taken from the table by general consent, discussed thoroughly, amended, and finally adopted as follows: COPY IN CCCA SECRETARY'S FILE. (During the consideration of the motion, it was moved by Mr. Long that the meeting be recessed at the call of the chair. The chair declared the meeting recessed at 9:10 p.m., and called it to order again at 9:34 p.m.)

The resignation of Fred Crosby from the standing Clock Committee was announced by the Secretary, and THE RESIGNATION WAS ACCEPTED BY GENERAL CONSENT.

It was moved and adopted by general consent THAT THE ORIGINAL MOTION ESTABLISHING THE STANDING CLOCK COMMITTEE BE AMENDED BY STRIKING OUT "TWO . . . CLUB" AND INSERTING "THREE, TO CONSIST OF MESSRS. TROTTIER, CHAIRMAN, MARTIN E. MORRISON, AND FRANK V. LEFFMAN."

The motion on qualification to the CCCA's State Championship berth was taken from the table by general consent and referred to the standing Tournament and Club Relations Committee for decision when administering and regulating the berth.

The chair announced the Mechanics' Institute Amateur Championship (13-14 September) and passed out the tournament bulletins, as requested by Mr. Alan W. Bourke, Director of the Mechanics' Institute Chess Club.

It was moved and adopted by general consent that the meeting adjourn sine die. The chairman declared the meeting adjourned sine die at 11:27 p.m. (The next meeting, the annual meeting, will be held on 9 January 1969, at 7:30 p.m., at Lincoln Elementary School, 225 Eleventh Street, Oakland [the Oakland Chess Club's quarters].)

*

A meeting of the Executive Board of the Central California Chess Association was held on Friday, 3 October 1969, in the Faculty Dining Room of Lincoln Elementary School, 225 Eleventh Street, Oakland (the Oakland Chess Club's quarters). The meeting was called to order at 8:09 p.m. by the Secretary, Martin E. Morrison, since the office of Chairman was vacant. It was adopted by general consent that Mr. Morrison serve as chairman pro tempore.

The Secretary read the call for the meeting: A meeting of the Executive Board of the CCCA will be held at Lincoln Elementary School, 225 Eleventh Street, Oakland (the Oakland Chess Club's quarters), at 8:00 p.m., Friday, 3 October 1969, for the purpose of recommending to the CCCA the elimination of the USCF-CCCA Rating System and the office of Rating Administrator, of amending the CCCA 1969-70 League Rules in regard to the rating system to be used, of approving an award of medallions for the Western Division winner of the CCCA Summer League, and of conducting some routine business. /s/ Everett L. McNally, Rating Administrator; Frank V. Leffman, League Director; Elwin C. Meyers, Editor.

The total attendance for the meeting was as follows--present: Martin E. Morrison, Leonard F. Trottier, Frank V. Leffman, Richard R. Shorman, Elwin C. Meyers (5); absent: Everett L. McNally, Ellis Plastrik.

It was adopted that the minutes of the 7 February 1969 Executive Board meeting be approved as published in the official organ.

It was moved by Mr. Morrison and adopted by general consent THAT THE VALLEJO CHESS CLUB, UPON THE APPLICATION OF MR. GUNNAR H. RASMUSSEN, SECRETARY, AND THAT THE SAN JOSE CHESS CLUB, UPON THE APPLICATION OF MR. WILLIAM T. ADAMS, USCF DIRECTOR IN SAN JOSE, BE AFFILIATED TO THE CCCA.

It was adopted THAT THE EXECUTIVE BOARD RECOMMEND TO THE CCCA AT THE NEXT MEETING THE ADOPTION OF THE FOLLOWING AMENDMENTS TO THE BYLAWS: THE STRIKING OUT OF ARTICLE II, SECTION i (c), AND OF ARTICLE IV, SECTION iv (e).

It was adopted THAT SINCE MR. ALVILLAR IS NO LONGER WITH THE BOYS' CLUBS, THE POST OF BOYS' CLUB LIAISON BE RESCINDED.

It was moved by Mr. Leffman that the Board recess at the call of the chair. The chair declared the meeting recessed at 8:32 p.m. and called it to order again at 9:22 p.m.

It was moved by Mr. Meyers and adopted THAT THE FOLLOWING ARTICLE BE SUBSTITUTED FOR ARTICLE IV OF THE CCCA 1969-70 LEAGUE RULES: A. IN THE USCF CATEGORY, THE RATING OF A PLAYER SHALL BE HIS OFFICIAL USCF RATING UP TO THE "RATING SUPPLEMENT, FALL 1969" PUBLISHED IN THE SEPTEMBER 1969 ISSUE OF CHESS LIFE. IF A PLAYER HAS NO SUCH RATING, HE MAY PLAY ON ANY BOARD. B. IN THE INDEPENDENT CATEGORY, THE TEAM CAPTAINS SHALL SUBMIT TO THE LEAGUE DIRECTORS, WITH THE RESULTS OF THE MATCH, A RATING (LETTER ONLY, NOT NUMERICAL) OF THEIR TEAM MEMBERS, AS FAR AS IT CAN BE DETERMINED. THE RATINGS SHALL BE THE PLAYERS RATING UNLESS A CLAIM IS MADE AGAINST THE RATING BY ANYONE AT ANY TIME. THE LEAGUE DIRECTORS SHALL MAKE THE DISPOSITION OF ANY CLAIM.

It was moved by Mr. Meyers that the Oakland Chess Club's A team in the CCCA 1969 Summer League, since it placed first in its division with a perfect score, although it lost the league trophy on tie-breaking points, be given an award equal to the league trophy. The motion was lost on a 1-2 vote.

It was moved by Mr. Leffman and adopted by a 3-1 vote that the team be given a certificate. After Mr. Meyers announced that he would re-introduce his motion at the CCCA's annual meeting in January, in order to avoid the possibility that the team might get both a certificate and an award, it was moved by Mr. Leffman and adopted by general consent that his motion be rescinded.

It was moved by Mr. Leffman and adopted by general consent THAT THE CCCA PURCHASE STATIONERY AT A COST OF ABOUT \$25.00 IN THE FORM AGREED UPON AT THIS MEETING.

It was adopted that the meeting adjourn sine die. The chair declared the meeting adjourned sine die at 11:20 p.m.

OFFICIAL ANNOUNCEMENT OF THE CCCA TOURNAMENT AND CLUB RELATIONS COMMITTEE

After considering Mr. Meyers motion regarding qualification to the CCCA's State Championship berth, which was referred to it, and Mr. Hans Poschmann's detailed suggestions, the CCCA's standing Tournament and Club Relations Committee has declared the following to be the method of awarding that berth:

(1) The CCCA will award "CCCA State Championship Qualifying Points" to qualify candidates for the berth.

(2) In order to receive Qualifying Points, the player must be a member of the California State Chess Federation (CSCF) at or before the tournament in which the Points are awarded.

(3) Any CCCA affiliate may award Points for any of its tournaments which is USCF-rated, if it announces in its publicity for the tournament that Points will be awarded and that players who are members of the CSCF should bring and display their membership cards. The affiliate must then submit to Martin E. Morrison, CCCA Secretary (address on p. 3 supra), the final scores of every player who is a member of the CSCF.

(4) Points will be awarded in the following manner:

(a) In an open Swiss tournament, all CSCF members will receive their final score in Points;

(b) In a class Swiss tournament, all CSCF members in classes consisting of "A" players or better will receive their final score in Points;

(c) In a round robin tournament, all CSCF members in Class A or better will get one-half their final score;

(d) If a tournament is closed to any players with better than an "A" rating, players will receive 75% of the points they otherwise would have received; if a tournament is closed to any players with better than a "B" rating, no points will be awarded.

(e) In the CCCA's Championship Tournament, all CSCF members will receive triple the number of points they otherwise would have received.

(5) Points will be totaled by 30 September for the following year's California State Championship. Then, by a vote of the Committee:

Either (a) the player with the highest total of Points accumulated will be declared the berth winner.

Or (b) a round robin qualifying tournament will be held among the four players with the highest total of Points, in addition to the winner of the CCCA's Championship Tournament, to be held every summer (from which the Championship entry fee will come), and a Committee nominee.

(6) A running total of Points earned will be published in Scacchic Voice

The Committee thanks Mr. Poschmann for his invaluable help in this matter, as well as Mr. W. Guthrie McClain, Editor of The California Chess Reporter and CSCF Director, for his suggested improvements.

*

The Committee, in other action, repealed the motion approved at the 10 January meeting of the CCCA in regard to the use of the CCCA's USCF charter for tournaments and substituted the following. The CCCA will use its USCF charter to co-sponsor with any affiliate "open, regional tournaments," as required by the USCF, upon application to and approval by the Committee. A service fee of \$5 will be charged for such co-sponsorship (a reduction from \$7.50)

*

Everett L. McNally was appointed Club Coordinator. He will be available "to travel to and aid any affiliate requesting organizational aid from the CCCA and to strengthen the organization of such affiliates." Mr. McNally is an active chess promoter and will assist any club by giving lessons, lectures, exhibitions, or by directing tournaments, when affiliates need and request such assistance.

ACCUMULATED CCCA STATE CHAMPIONSHIP QUALIFYING POINTS

ACCUMULATED CCCA STATE CHAMPIONSHIP QUALIFYING POINTS

Points listed are from the CCCA's USCF Class Tournament at Concord (6-7 September). Upcoming tournaments which will be awarding points are: the Bechtel Chess Club's Third Annual San Francisco Open Chess Tournament (15-16 November), the Oakland Chess Club's Fourth Annual San Francisco Bay Area Amateur Open Chess Championship (20-21 December), and the CCCA's Regional One-Day Round Robin Chess Tournament (3 January).

Jude F. Acers (5), Gary L. Pickler (3½), William F. Gray, Jr. (3), Garland

RESULTS OF CCCA QUESTIONNAIRE

With all copies of the last issue of Scacchic Voice, a questionnaire on CCCA activities was enclosed. The questionnaire was issued from a concern on CCCA's part to determine its members desires and needs in yet another way. Activities were rated on a numerical scale from 1 (very satisfied) to 5 (very dissatisfied).

The following activities were rated favorably by members: the leagues (2.3), CCCA and CCCA affiliates' tournaments (2.5), and CCCA meetings (2.9). Those who had attended CCCA meetings attended an average of 5.7; those who had not attended any cited generally that they were busy or that the distance to the meeting was too great (this answer from Visalia!). Only the rating system and the handicap system used in the Summer League were rated slightly unfavorably (3.1 and 3.4 respectively). In line with these responses, the Executive Board has recommended to the CCCA the elimination of the current rating system, and no handicap system will be used in the CCCA 1969-70 Leagues.

Open tournaments were slightly preferred to class tournaments by a response of 50% to 36% (with 14% having no preference). The CCCA has, and has recommended to its affiliates, to vary the type of their tournaments.

Small entry fees and small prizes in tournaments overwhelmingly were preferred to large entry fees and large prizes by a vote of 92% to 0% (with 8% having no preference). CCCA started the practice in this area of substantially reducing tournament entry fees and will continue to do so. By far the great majority of CCCA and CCCA affiliates' tournaments have entry fees of \$5 or less.

All features of Scacchic Voice were rated favorably in the following order: tournament calendar (1.7), Richard R. Shorman's games column (1.9), James B. Reynold's analysis column (2.3), news (2.3), minutes of CCCA meetings (2.3), photographs (2.3), advertisements and inserts (2.3), letters to the editors (2.4), officer and affiliate listing (2.5), articles (2.5)—cited here for special mention were Martin E. Morrison's columns on chess laws, and chess puzzles and stories—, Richard Lee's problems column (2.6). We shall continue to carry these features, and others which we hope will be of interest to our readers.

In regard to the publication of tournament results in Scacchic Voice, the responses indicated an overwhelming preference for just a list of winners (61%), with the others going equally (13% each) for a complete ranking, a full crosstable, and either a complete ranking or a full crosstable. We shall therefore publish only a list of winners for tournaments reported in Scacchic Voice, except for important tournaments, which will be listed by a complete ranking.

Response was overwhelming again for awarding the CCCA's berth to the State Championship by a qualifying point system (70%); 20% preferred to award the berth by a single tournament, and 10%, by a round robin qualifier.

A high 93% of the respondents were members of USCF, only 27% of CSCF (reasons alleged were that membership was too expensive for benefits received, that distance to tournaments was too great, that CSCF membership was unnecessary, that the CSCF held no class C tournaments), 87% of CCCA. CSCF Director-at-large Martin E. Morrison will relay the comments on CSCF to its Board of Directors, but feels that for many chess players the subscription to The California Chess Reporter alone is worth the cost of membership.

We thank all those who took the time to respond to this questionnaire. As we have indicated, the CCCA is acting on the responses and is always happy to hear from members what they would like the CCCA to do. Better yet—attend the CCCA meetings, to debate and vote on your own proposals!

----- (advertisement) -----

S P E C I A L

ART NEAL'S all new patented folding chess case and board. Sturdy corrugated construction holds your pieces, chess clock, books, etc., with ease. Similar cases sold for \$15. New process saves you \$10.



S P E C I A L

Special introductory offer: black, washable case with carrying handle, brown and white chessboard (2 in. squares)—JUST \$5 PLUS 25¢ TAX.

For yours, contact:

ART NEAL
STUDIOS
203 Mt. View Avenue
San Jose, CA 95127

ART NEAL
STUDIOS
Telephone: (408)
258-4740



EDITORS:

I should like to thank you for publishing this puzzle of mine, but there are a few mistakes appearing in it in Scacchic Voice:

"Smothered Mate" is left out of the list of words. So is "Center."

There are six EP's, five CH's, and two SAC's not already included in only one word or term.

"Rank" is to be found nowhere in the puzzle, as it is in my original puzzle or word list, but where "Rank" is supposed to be, the "r" is replaced by a "p." This must be a typographical error. [It is. We're sorry.--EDS.]

Craig Barnes

[We were simply astounded at the response this puzzle stirred. The following persons submitted correct solutions and have received their prizes in the mail: Kenneth Terry, of Hayward; Kenneth Jackson, Jr., of Fremont; George Montanaro, of San Jose; Gary Weber, of Alameda; D. John Douglas, of Hayward; Guy D. Ball, of Pompton Lakes, New Jersey. Many even caught the errors in the puzzle. Congratulations to you all. Perhaps Mr. Barnes will furnish us with another puzzle sometime.--EDS.]

*

EDITOR MARTIN E. MORRISON:

Thank you for the clear letter you sent to me explaining your efforts in the stated problem. I imagine efforts on your part such as this will be rewarded by gratitude. Of course, I appreciate the prize money forwarded in part by paid registration in the upcoming tournament. As regards the mistake made, your efforts more than make up for it. Again, thank you for your time. A loyal chess supporter.
Frederick J. Ulrich

[Thank you for the kind words. Because of great confusion in the last round of the CCCA's Adult and Junior Championship Tournament (19-20 July) arising from a conflict with the Apollo XI moonshot, a correction in the round five results of the game Frederick J. Ulrich vs. Lt. Col. George W. Roust has increased Mr. Ulrich's score from 2½ to 3½ and lowered Lt. Col. Roust's from 3 to 2. This correction has also changed the standings of some other players because of modifications in tie-breaking scores and affects only the Reserve Division. Mr. Ulrich thus splits \$15 with Mr. Richard G. Gordon in a tie for the Second-Third Place C Prize. Since the error was no fault of the other players, the CCCA is allowing those players who inadvertently received more money than was due them to keep the extra money. All the standings published in the October-November 1969 issue of Scacchic Voice are correct except for the following players (followed by their erroneously reported score in parentheses):

8 Hans Poschmann	(9)	21 Edward S. Yeung	(22)	Roust	(14)
9 Dr. Robert Blauner	(8)	22 Harold Barnett	(21)	29 Marc McNow	(31)
11 Frederick J. Ulrich	(23)	23 David W. Harker	(24)	31 Robert Fitzsimons	(29)
14 Edward Silva	(11)	24 Craig Barnes	(26)	33 Hilbert L. Gardilla	(35)
15 David Azevedo	(16)	26 Michael Miller	(27)	34 James Tilden, Jr.	(33)
18 Duncan D. Campbell	(17)	27 Richard J. Provost	(28)	35 John Narcisi	(34)
17 David Smith	(13)	28 Lt. Col. George W.			

---EDS.]

UPCOMING IN SCACCHIC VOICE

With the permission of Fred Cramer, Vice President of the FIDE (World Chess Federation), Scacchic Voice will publish for the first time in the United States (so far as we know) a complete translation of the "Interpretations Made by the Permanent Commission of the FIDE for the Laws of the Game." Although our translation is unofficial (from the official French of the FIDE), it should be a substantial aid for US officials and players for whom the text is now almost unavailable

CLASSIFIED ADVERTISEMENTS

CHESS INFORMANT--Vol. 6 (latest); a must for the serious player. 300 pp. of 700 games for late 1968, full international crosstables for recent tournaments, also combination and ending studies by such greats as Fischer, Byrne, Gligoric, Larsen, Portish. Selling now for \$5.50. Unmarked, perfect copy available now from Martin E. Morrison, address and telephone number on p. 3 supra. Best offer will be accepted.

OFFICIAL USCF RATINGS OF CCCA MEMBERS

At this time, more than one and one-half years since the founding of the CCCA, the Executive Board has decided that our members no longer need the "crutch" of Adjusted USCF and Supplementary CCCA Ratings. When the CCCA began its existence on 1 March 1968, the number of USCF members in it were very few indeed. Now, after one and one-half years of regional expansion for democratic, inexpensive, and USCF-oriented activity, the number of CCCA members with USCF ratings, let alone the members of USCF without ratings, yet, has grown to over 100, almost one-third of the total CCCA membership.

The Adjusted USCF and Supplementary CCCA Ratings had always been looked upon as a temporary stopgap until the time when the percentage of CCCA members in USCF made such additional rating lists unnecessary. We have now reached the point which Lt. Col. Edmund B. Edmondson, Executive Director of the USCF, envisaged when he said in a letter to Martin E. Morrison, CCCA Secretary, that such additional rating lists "needlessly duplicate . . . our [USCF's] effort, . . . and why bother with a supplemental list when we put out the national list quarterly . . . ?"

Now, when the number of USCF tournaments in Central California have more than doubled, with one being held about every month, when the number of USCF members in Central California has increased phenomenally, and when the CCCA 1969-70 League has fourteen all-USCF teams, why indeed should it be necessary to try to supplement perhaps the world's most accurate and sophisticated rating system--that of the USCF?

Beginning with this issue, therefore, we shall print the current official USCF ratings of all CCCA members for the convenience of members, team captains, and tournament directors alike. We encourage all CCCA members to join the USCF at the CCCA's 20% discount, to participate fully in US, as well as state, regional, and local chess, and to receive the many benefits of USCF membership.

All this is not to say that non-USCF members will be ignored in CCCA. We are simply saying that the only worthwhile rating system is the USCF's--for those who want to play serious chess. Those who view chess as an enjoyable pastime for recreation and sociability with fellow players will still be fully served by the CCCA through, among other things, *Scacchic Voice*, Independent leagues, local club assistance, and especially by democratic cooperation between Central California chess clubs and organizations in the CCCA.

In closing, we should like to thank Mr. Everett L. McNally, CCCA Rating Administrator, for masterminding the theory and practice of the USCF-CCCA Ratings for this past year. Mr. McNally's mind is still at work, and we shall be seeing inventive and imaginative work from him for the CCCA in other fields.

If you are a CCCA and USCF member with a USCF rating which is not listed below, please notify the Editors of your rating. These are the official USCF ratings through the "Rating Supplement, Fall 1969," published in the September *Chess Life*. Almost all CCCA members through the 5 October assessment period are listed. * indicates a provisional rating based on 10 to 18 games; such ratings are less reliable than established ratings. # indicates a rating based on 4 to 9 games; such ratings are highly unreliable. Players who have played less than 4 games are not listed.

Expert2000-2199 Class B ...1600-1799 Class D ...1200-1399 Class E ...1999 & below
Class A ...1800-1999 Class C ...1400-1599

		<u>Top Ten</u>					
K Tullus	2156	J Iwashita	2060	G Rasmussen	1918	S Trosz	1904
S Von Oettingen	2068	W Allen	1994	W Sprague	1916	S Kornher	1880*
		W Adams	1945	J Fossaaen	1910		
Total number of USCF-rated CCCA members: 105.							
<u>Alameda CC</u> (8)		F Olvera, Sr.	1597	E McNally	1828	M Crossland	1472*
A Hall	1565*	R Oylar	1670	R Martinez	1739#	R Cuneo	1875
L Petty	1571*	M Rivera, Jr.	1767	M Miller	1178#	G French	1798#
G Weber	1817*	D Thompson	1773#	<u>Livermore CC</u> (3)		D Glanville	1674#
<u>Bechtel CC</u> (4)		F Ulrich	1543*	H Barnett	1615*	R Hansen	1876
W Allen	1994	C Vail	1597	G Roust	1673*	R Hough	1854
G Bigelow	1731*	J Weiler	1457	J Shearer	1686	L Lane	1263#
T Cahill	1540#	<u>Deuel Vocational</u>		<u>Martinez CC</u> (3)		R Lee	1286#
A Saguissag	1741#	<u>Institution Chess</u>		R Swanson	1802	C Maddigan	1827
<u>College of the Se-</u>		<u>Interest Group (I)</u>		F Ulrich	1543*	R Mitchell	1779
<u>quoias CC</u> (1)		R James	1528#	C Vail	1597	R Ng	1814
C Fotias	1508	<u>Fremont CC</u> (2)		<u>Newark CC</u> (3)		A Ramirez	1724
<u>Concord CC</u> (13)		W Goss	1742#	T Ebarb	1651*	J Salna	1859
D Azevedo	1456#	H Poschmann	1651	W Goss	1742#	M Sloane	1516#
D Clapp	1760	<u>Hayward CC</u> (7)		H Poschmann	1651	W Sprague	1916
J Fossaaen	1910	M Albertson	1505#	<u>Oakland CC</u> (23)		R Trenberth	1771
G Garcia	1640	E Bartholomew	1617	T Anderson	1457*	S Trosz	1904
R McCollough	1787	W Goss	1742#	A Boyd	1164#	R Turney	1515*
M McNow	1626	L Lopez	1811*	R Clinco	1745		

R Wheeler	1743	F Crofut	1834	E Rosenthal	1485#	S Von Oettin-	
<u>Orinda CC (2)</u>		R DeLashmitt	1822#	K Tullus	2156	gen	2068
A Boyd	1164#	T DeLong	1304#	M Vasquez	1506	<u>Vallejo CC (4)</u>	
D Campbell	1720	A Ferreira	1892	P Weiss	1712	F Harris	1867
<u>Piedmont Hills High School CC (1)</u>		A Gardner	1548#	<u>Santa Rosa CC (4)</u>		L O'Doan	1684
D Myers	1125*	M Gazze	1816	C Falbo	1743	G Rasmussen	1918
<u>Richmond CC (1)</u>		W Goss	1742#	L Henderson	1575*	R Smith	1515*
L Trotter	1532	J Iwashita	2060	D Johnson	1650*	<u>Visalia CC (1)</u>	
<u>San Jose CC (20)</u>		D Lieberman	1664	S Kornher	1880*	C Fotias	1508
W Adams	1945	E Mueller	1867	<u>UC Davis CC (4)</u>		<u>Walnut Creek CC (4)</u>	
R Anderson	1576*	C O'Brian	1519*	F Leffingwell	1488	G Bigelow	1751*
A Critchlow	1857	F Penoyer	1666*	E Olmsted	1696	S Mujahed	1639#
		J. Peterson (L)	1589#	M Shifrine	1814	C Vail	1597
						J Weiler	1457

CHESS IS MY HOBBY

By JAMES B. REYNOLDS

Scacchic Voice Analysis Columnist

MAY I HAVE MY MOVE BACK? Of course, any chess player knows this is against the rules, but don't we wish we could sometimes? In a recent game at the CCCA's USCF Class Tournament at Concord (6-7 September), I imagine the player of the white pieces in the following game could really ask that question. Being from the C/D/E Division, I believe the game was very well played except for that move I know even I should want to take back,--but it just doesn't go in a tournament game, and shouldn't really be allowed in a friendly game. Sometimes we have to learn the hard way. The following game is interesting to me because the players in a lesser division seem to be so far ahead than in my time; therefore, little comment is made.

White: Craig Barnes, of Berkeley

Black: Jerry L. Rogers, of Hayward

Opening: Two Knights' Defense

1 P-K4	P-K4	8 N-QB3	Q-QR4	15 RxRch	RxR
2 N-KB3	N-QB3	9 NxN	B-K3	16 NxN	RxN
3 B-B4	N-B3	10 N/4-N5	0-0-0	17 Q-N4ch	K-N1
4 0-0 (a)	NxP	11 NxB	PxN	18 P-KR4? (b)	R-K8ch
5 P-Q4	PxP	12 RxP	B-Q3	19 RxR	QxR mate
6 R-K1	P-Q4	13 B-N5	QR-K1		
7 BxP	QxB	14 Q-K2	N-K4		

(a): N-QB3, and we have a safe but not very aggressive Four Knights' Game. Also, we could go into 4 P-Q4, leading a Max Lange Attack, out-of-date but very interesting, i.e., 4...PxP; 5 P-K5, P-Q4; 6 PxN, PxB, and headaches.

(b): Hey! Can I have my move back?? I meant P-KN3, and we both still live!

***CHESS BIOGRAPHY OF DAVID L. AMKRAUT,
CCCA STATE CHAMPIONSHIP BERTH WINNER***

David L. Amkraut, CCCA's qualifier for the California State Championship Tournament to be held this December at Los Angeles, was born on 29 September 1951 in Brooklyn, New York. In 1962 he moved to California and eventually settled in Palo Alto. He is now a student at the University of California at Santa Cruz.

Mr. Amkraut began his tournament chess career in 1966 at the age of 15, playing for the Palo Alto Chess Team. Since then he has won nine first prizes in tournament play. He began by taking third place in two 1966 tournaments, playing in Class B. In 1967 he won three tournaments, including the Peninsula Junior Chess Championship. The following year he won the Expert Division in the High School Open and a Northern California Class A Championship. Finally, last July he won the CCCA's Adult and Junior Championship with an excellent score of 4½-½ against viciously strong opposition, thus gaining for him a place at the State Championship finals. Let us all hope his star will rise to victory in the chess sky this December.

Some players are still under the misconception that the United States Chess Federation (USCF) is only for higher-rated players. Nothing could be farther from the truth. What other organization has not only a Class C, but a Class D and a Class E as well? Your national organization is for all chess players, regardless of their strength. Note also that the CCCA's February Tournament will offer a Class D/E prize.

CCCA AFFILIATE DIRECTORY

(Current number of CCCA affiliates: 24; of members: 382.)

ALAMEDA CHESS CLUB: Mon., 7:00-11:30 p.m.; McKinley Park Rec. Cen., Walnut St. and Buena Vista Ave., Alameda.

BECHTEL CHESS CLUB: Only for employees of the Bechtel Corporation, San Francisco.

BERKELEY YMCA CHESS CLUB: Wed., 7:00 p.m.; Palm Rm., Berkeley Cen. YMCA, 2001 Allston Wy., Berkeley.

COLLEGE OF THE SEQUOIAS CHESS CLUB: Tues., 12:00 m.-1:00 p.m.; Rm. 338, Col. of the Sequoias, Visalia.

CONCORD CHESS CLUB: Fri., 7:30-11:30 p.m.; Concord Sen. Citizens Cen., 2974 Salvio St., Concord.

DEUEL VOCATIONAL INSTITUTION CHESS INTEREST GROUP: Only for inmates of the Deuel Vocational Institution, Tracy.

FREMONT CHESS CLUB: Thur., 7:00-11:00 p.m.; Westridge Park Rec. Cen., 36200 Fremont Blvd., Fremont.

HAYWARD CHESS CLUB: Mon. and Fri., 7:30-12:00 p.m.; Hayward Art and Science Cen., 2058 "D" St., Hayward.

LIVERMORE CHESS CLUB: 1st and 3rd Fr., 7:30-11:30 p.m.; Old Lib., Carnegie Bldg., Fourth and "J" Sts., Livermore.

MARTINEZ CHESS CLUB: Mon., 7:30 p.m.; 1111 Ferry St., Martinez.

MONTEREY PENINSULA CHESS CLUB: Thur. evenings; Casa Alvarado Chess Cen., 494 Alvarado St., Monterey.

NEWARK CHESS CLUB: Tues., 7:00-10:30 p.m.; Newark Community Cen., 35501 Cedar Blvd., Newark.

OAKLAND CHESS CLUB: Fri., 7:00-11:30 p.m.; Multipurpose Rm., Lincoln Elem. School, 225 Eleventh St., Oakland.

ORINDA CHESS CLUB: Thurs., 7:30 p.m.; Orinda Community Church, 10 Irwin Wy., Orinda Village, Orinda.

PIEDMONT HILLS HIGH SCHOOL CHESS CLUB: Mon.-Fri., 2:30-4:00 p.m.; Rm. E-14, Piedmont Hills High School, 1377 Piedmont Rd., San Jose.

RICHMOND CHESS CLUB: Fri., except the 1st Thur. instead of the 1st Fri., 7:00 p.m.; Our Lady of Mercy Church, 301 W. Richmond Ave., Pt. Richmond.

SAN JOSE CHESS CLUB: Wed., 7:30 p.m.; San Jose Central YMCA, 1717 The Alameda, San Jose.

SAN QUENTIN CHESS CLUB: Only for inmates of the California State Prison, San Quentin.

SANTA ROSA CHESS CLUB: Fri., 7:00-10:00 p.m.; Santa Rosa Jr. College, 1501 Mendocino Ave., Santa Rosa.

UC DAVIS CHESS CLUB: Mon., 7:00-11:00 p.m.; Games Rm., Memorial Union, University of California, Davis.

VALLEJO CHESS CLUB: Fri., 7:30 p.m.; Vallejo Community Cen. Bldg., 225 Amador St., Vallejo.

VISALIA CHESS CLUB: Fri., 7:30 p.m.; Rec. Park Bldg., 345 No. Jacob St., Visalia.

WALNUT CREEK CHESS CLUB: Tues., 7:00 p.m.; Sen. Citizens Hospitality House, 1385 Civic Dr., Walnut Creek.

WESTERN ADDITION CHESS CLUB: Tues., 7:30 p.m.; Family Service Agency, 1010 Gough St., Cathedral Hill, San Francisco (to be formally affiliated at the 9 Jan. CCCA meeting).

(Please do not send mail to the above addresses; they are not mailing addresses.)

----- (advertisement) -----

UNITED STATES CHESS FEDERATION (USCF)

The two giants of American chess periodicals, Chess Life and Chess Review have merged into one super chess magazine. Members of USCF will automatically receive this great magazine, termed by Israel A. Horowitz as "the biggest, greatest, and best periodical in the world," as well as the mammoth merged Christmas chess catalogue. JOIN NOW. See p. 16 for discount details. FIRST ISSUE IN NOVEMBER.

CALIFORNIA STATE CHESS FEDERATION (CSCF)

Dues will be raised from \$2.50 to \$5.00 for adults on 1 January (under 21 remains \$2.50). Those who desire to compete for CCCA State Championship Qualifying Points and to receive the outstanding journal The California Chess Reporter, edited by W. Guthrie McClain and annotated by USCF Master Jude F. Acers should JOIN NOW. See p. 16 for details.

WINNERS OF THE CENTRAL CALIFORNIA CHESS ASSOCIATION'S 1969 SUMMER LEAGUE.
 Wesley A. Nelson (l.) and Harold Barnett, two of the team members of the winning Livermore Chess Club team, pose before the beautiful trophy of the team's victory. The Livermore team, along with the Oakland Chess Club's A team, tied with perfect scores of 5-0, but the Livermore team claimed the trophy on greater tie-breaking points. Full crosstables of the Summer League Season will be found on page four supra.—Photograph by Richard R. Shorman.



NEXT CCCA GENERAL MEMBERSHIP MEETING (ANNUAL MEETING): Friday, 9 January, 7:30 p.m., Lincoln Elementary School, 285 Eleventh Street, Oakland (the Oakland Chess Club's quarters). All CCCA members, i.e., members of any of the affiliates listed on p. 16 supra, have full privileges of debate and voting. Nonmembers are welcome. Annual reports and election of officers, as well as other business.

NEXT USCF TOURNAMENTS OF THE CCCA AND ITS AFFILIATES: 15-16 Nov., 3rd Ann. San Francisco Open; 20-21 Dec., Oakland CC's 4th Ann. San Francisco Bay Area Amateur Open Championship; 3 Jan. CCCA's Regional 1-Day Round Robin. CCCA State Championship. Qualifying Points will be awarded at all three tournaments. See enclosed tournament bulletins for details.

DEADLINE FOR SCACCHIC VOICE MATERIAL: News and tournament data, 1 January; other material, including columns, 1 December--for the next issue.

CHESS ORGANIZERS: Please put Scacchic Voice on your mailing list for newsletters and tournament bulletins. Trade subscriptions welcome.

PLEASE NOTIFY THE EDITORS AS SOON AS POSSIBLE OF ANY CHANGE IN YOUR ADDRESS. SCACCHIC VOICE IS NOT FORWARDED BY THE POST OFFICE.

Editors
 Central California Chess Association
 c/o Post Office Box 1822
 Oakland, California 94604
 Telephone: (415) 582-1973
 THIRD-CLASS MAIL
 ADDRESS CORRECTION REQUESTED

NEXT AFFILIATE ASSESSMENTS DUE: 5 December and are delinquent there after. Club officers responsible should send 20¢ per club member, along with the full name and address (with ZIP code) of each member to the CCCA Treasurer (address on p. 3 supra). "A fine of \$1/will be levied against any affiliate which pays its assessment more than two weeks late without a valid excuse accepted by the Treasurer."



USCF MEMBERSHIPS AT 20% DISCOUNT: \$4 (under 21), \$8 (21 and over) per annum—regularly \$5 and \$10, respectively—for new or renewal memberships, if sent to the CCCA Treasurer (address on p. 3 supra). Benefits include a Chess Life subscription, eligibility for a USCF (national) rating, and discounts on chess equipment.

CSCF MEMBERSHIPS: \$2.50 per annum (under 21), \$5 (21 and over) from CSCF Treas. Dr. Ralph Hultgren, 1501 LeRoy Ave., Berkeley 94708. Benefits include a subscription to The California Chess Reporter. CCC members are most heartily urged to become members of the USCF and CSCF **CHESS CLOCKS--LOWEST PRICE IN THE US; NO WAITING MONTHS FOR OVERSEAS DELIVERY:** BHB Extra, brown

plastic case, 6" x 3" x 1 1/4"; two-year guarantee from manufacturer; "the world standard for dependable quality and durability at a moderate price" USCF. ONLY \$12.50. Immediate pickup from the CCCA Treasurer or League Director Frank V. Luffman (address and telephone numbers on p. 3 supra), or by mail (add 60¢ postage and insurance) from Mr. Luffman only.

