
63 Chess Clubs
And Organizations

CIRCULATION
323 Chess Players

46 Chess Publications
And Libraries

SCACCHIC VOICE

Central California's Chess Magazine
And
Official Organ Of The
Central California Chess Association
(An Affiliate of the United States Chess Federation)

David J. Forthoffer (seated, l.), winner of the Oakland Chess Club's Third Annual San Francisco Bay Area Amateur Open Championship Tournament, held 14-15 December, shows Expert Richard R. Shorman (seated, r.), CCCA Publicity Director, an especially pleasing move in his last round victory over Ro-



bert Hammie (standing, l.). Vance Carpenter, of Hayward, studies the position, as Myron A. Johnson, of Oakland, admires one of the wall murals at the CACA Oakland Lodge, site of the tournament. (Complete coverage in "News" section infra.) —Photography by Martin E. Morrison, Scacchic Voice Editor.)

February-March 1969
Volume I
Numbers ix-x

MARTIN E. MORRISON . . .

Editors

. . . . ELWIN C. MEYERS

TOURNAMENT CALENDAR

15-16	FEBRUARY	THIRD ANNUAL CONCORD OPEN CHESS CHAMPIONSHIPS	USCF & JR.	CONCORD
22-23	February	CFNC Championship, CFNC/USCF Open, Qualifier, and Junior Championship Playoff	USCF, CFNC, & Jr.	Hayward
26	February-1	Nevada State Open	USCF	Sparks
23-30	March	Carlmont YMCA Open Chess Tournament and Bay Area High School Chess Championship	CFNC	San Carlos
28-30	MARCH	FIFTH VISALIA AMATEUR OPEN	USCF	VISALIA
30	MARCH	OAKLAND CHESS CLUB'S SECOND ANNUAL FOUR-MAN SECTIONAL	USCF & CFNC	OAKLAND
19-20	April	Fourth Annual Peninsula Open	?	Sunnyvale
9-10	May	Eleventh Annual School Open Chess Tournament (Tentative)	?	Oakland
24-25	MAY	WALNUT CREEK OPEN (USCF)	USCF & JR.	WALNUT CREEK
	JUNE	FIFTH MONTEREY INTERNATIONAL OPEN CHESS TOURNAMENT (tentative)	USCF	MONTEREY
	JUNE	CCCA ADULT AND JUNIOR CHAMPIONSHIP (tentative)	USCF	?
25	JUNE	Seventh Annual Chess Festival	-	Hayward
23-24	AUGUST	Oakland Chess Club's Sixth Annual Summer Tournament	CFNC	Oakland
31	August-1	Sonoma State College Open	?	Rohnert Park
27-28	September	Fourth Annual Northern California Class Championships	?	Sunnyvale
13-14	DECEMBER	OAKLAND CHESS CLUB'S FOURTH ANNUAL SAN FRANCISCO BAY AREA AMATEUR OPEN CHESS CHAMPIONSHIP	USCF	OAKLAND

*

Tournament Organizers: Please let us know as soon as possible of tentative or definite tournament dates, so that we may be able to reserve the dates for you in the "Tournament Calendar." Details for tournaments will be found in the "News" section. CCCA AFFILIATES' USCF TOURNAMENT ARE CAPITALIZED IN THE "TOURNAMENT CALENDAR."—EDS.

NEWS

Steven Spencer Victor at New Year Open
By RICHARD R. SHORMAN
CCCA Publicity Director

A record forty-seven entrants participated in the 100%-USCF Second Annual New Year Open Chess Championships, co-sponsored by the Concord Recreation Department, the Walnut Creek Chess Club, and the Central California Chess Association. The tournament was held on 4-5 January and was won by Steven Spencer, of Berkeley, who took the first prize of \$45.50 by virtue of a perfect 5-0 showing. Michael Morris and Frank Thornally, both of Berkeley, split the combined second- and third-place prizes, \$25.00, in accordance with USCF rules. Both scored $4\frac{1}{2}-\frac{1}{2}$. Randall Hough, of Santa Monica, and K. Michael Goodall, of Berkeley, split the A prizes of \$40 with a 4-1 result. A similar score was achieved by Dale Gillette, of San Francisco, in taking the First B prize of \$25.00. Dane Hinricksen, of Cucamonga, won the \$10 second prize on a $3\frac{1}{2}-1\frac{1}{2}$ tally. George Roust, of Livermore, won \$20, with a 3-2 score, best in Class C. Earl Ipsen and Leonard Petty split the \$10 second prize with $2\frac{1}{2}-2\frac{1}{2}$. Terry Garnett, of Concord, won the trophy for the Junior Division with a perfect 4-0 score.

("News" section continued on page 5.)

NEW YEAR'S RESOLUTION: JOIN THE US CHESS FEDERATION

Scacchic Voice has volunteered to enclose with every copy of this issue a letter from the United States Chess Federation (USCF) detailing the benefits of membership in that organization. We call this to your attention and suggest you give the letter your careful consideration.

(Continued on page 13.)

PUBLICATION DATA

Editors
Central California
Chess Association
c/o Post Office Box 1622
Oakland, California 94604
Telephone: (415) 636-1892

Scacchic Voice is edited and published bimonthly (with monthly supplementary issues as needed) by Martin E. Morrison and Elwin C. Meyers, Editors, CCCA, in accordance with Article IV, Section iv (f) of the Bylaws of the CCCA, which directs the Editors to "edit and publish the official organ of the CCCA and all business proceedings of the CCCA, to provide a system of communication among the members and affiliates of the CCCA." Every member of the CCCA, i.e., every member of a chess club or organization affiliated to the CCCA, automatically receives a Scacchic Voice subscription mailed to his home gratis.

The CCCA is a nonprofit, democratic organization and an affiliate of the United States Chess Federation. The objects of the CCCA are: "(a) to serve as a regional coordinator of chess activities, clubs, and players; (b) to conduct or sponsor tournaments, leagues, matches, and other forms of chess competition, alone or in conjunction with other chess clubs or organizations; (c) to maintain a system of ratings of the members of the CCCA to supplement those of the USCF; (d) to provide an organ of communication among the members and affiliates of the CCCA, to be published not less than bimonthly; (e) to support the affiliates of the CCCA in every feasible way; (f) to promote the game of chess and the USCF" (Article II, Section i of the Bylaws of the CCCA). Any Central California chess club or organization supporting these objects is invited to apply for affiliation to the CCCA, with benefits for its members which include a Scacchic Voice subscription, a USCF-CCCA rating, discounts on chess equipment and USCF memberships, and full privileges of participation and voting at CCCA business meetings.

NONMEMBER SUBSCRIPTIONS: \$2.00 per annum.

BACK NUMBERS: 25¢.

ADVERTISEMENTS: \$4.00 per eighth page per issue. \$20.00 per insert per issue. (This cost is one cent cheaper per piece for mailing tournament circulars, etc., than postage costs alone.) Classified advertisements: 7½¢ per word per issue on any subject.

The opinions expressed in the editorials and by columnists are those of Scacchic Voice's editors or those of individual columnists. They do not necessarily constitute an official policy of the CCCA or any of its affiliates. All unsigned articles were written by the editors.

Submission of material (including photographs) by readers is encouraged and becomes the property of the editors. Each CCCA affiliate is responsible for sending its own news material to the editors. To be assured of consideration for publication, news and tournament data should be received at the above address thirty days preceding the month of issuance. Other material (including columns) should be received at the above address sixty days preceding the month of issuance. Material should be typewritten, following the style used in this magazine.

Comments from readers on any feature of this magazine will be appreciated. Letters for publication in the "Letters to the Editors" column should be marked "For Publication." Correspondence to the editors should be sent to the above address; that to any other member of the staff, to that member, in care of the editors.

Material published in this magazine may be used by other publications if credit is given to Scacchic Voice (including its editors and address) and if the editors are sent a copy of the issue containing the material.

CCCA OFFICERS

CHAIRMAN
2159 Mount Diablo Street, Concord 94520
SECRETARY
Post Office Box 1622, Oakland 94604
TREASURER
5315 MacDonald Avenue, El Cerrito 94530
LEAGUE DIRECTOR
231 Twelfth Street, Richmond 94801
RATING ADMINISTRATOR
23716 Lynn Street, Hayward 94541
EDITORS
c/o Post Office Box 1622, Oakland 94604
c/o Post Office Box 1622, Oakland 94604

JEROME M. LONG
682-3497
MARTIN E. MORRISON
636-1892
LEONARD F. TROTTER
233-1595
JACK W. DENNIS
233-1401
EVERETT MC NALLY
783-8763
MARTIN E. MORRISON
636-1892
ELWIN C. MEYERS

PUBLICITY DIRECTORS

1111 Ferry Street, Martinez 94553

ELLIS PLASTRIK

228-1796

RICHARD R. SHORMAN

782-5029

27358 Tampa Avenue, Hayward 94544

Assistant Publicity Directors: Alameda County--(Alameda area) Stephen Nelson, (Livermore area) Wes Nelson, (Newark area) Hans Poschmann, (Oakland area) Richard Lee; Contra Costa County--Saleh Mujahed; Marin County--to be determined; Monterey County--William Kennedy; Tulare County--Chris A. Fotias.

Members should feel free to contact their officers regarding any aspect of CCCA business. They will be happy to hear and work on your ideas.

CCCA AFFILIATES

- ALAMEDA CHESS CLUB Mondays, 7:00-10:30 p.m.
McKinley Park Rec. Cen., Walnut St. and Buena Vista Ave., Alameda -
Mailing Add.: c/o Darrell Freeman, Pres. pro tempore, 465 Buena Vista Ave.,
Apt. 204, Alameda 94501 523-3584
- BERKELEY YMCA CHESS CLUB Wednesdays, 7:00 p.m.
Palm Rm., Berkeley Cen. YMCA, 2001 Allston Wy., Berkeley 94704 848-6800
- COLLEGE OF THE SEQUOIAS CHESS CLUB Tuesdays, 12:00 m.-1:00 p.m.
Rm. 338, College of the Sequoias, Visalia -
Mailing Add.: c/o Chris A. Fotias, College of the Sequoias, Visalia 93277 (209) 732-1835
- CONCORD CHESS CLUB Fridays, 7:00-11:30 p.m.
Concord Rec. Cen., 2974 Salvio St., Concord 94520 687-2585
- FREMONT CHESS CLUB Thursdays, 7:00-10:00 p.m.
Centerville Jr. High School, 37720 Fremont Blvd., Fremont -
Mailing Add.: c/o Hans Poschmann, Chairman, 4621 Seneca Park Ave., Fremont 797-2072
- HAYWARD CHESS CLUB Mondays and Fridays, 8:00-11:00 p.m.
Hayward Arts and Sciences Cen., 2058 "D" St., Hayward -
Mailing Add.: c/o Richard Shorman, Pres., 27858 Tampa Ave., Hayward 94544 782-5029
- LIVERMORE CHESS CLUB First and third Fridays, 7:30-11:30 p.m.
Old Library, Carnegie Bldg., Fourth and "J" Sts., Livermore -
Mailing Add.: c/o Harold Barnett, Sec., 677 Caliente Ave., Livermore 94550 447-4588
- MARTINEZ CHESS CLUB Mondays, 7:30 p.m.
1111 Ferry St., Martinez 228-1796
Mailing Add.: c/o Rudy R. Quintero, Pres., 305 Christie Dr., Martinez 94553
- MONTEREY PENINSULA CHESS CLUB* Thursdays, 7:30 p.m.
Casa Alvarado Chess Center, 494 Alvarado St., Monterey (408) 372-9790
- NEWARK CHESS CLUB Tuesdays, 7:00-10:30 p.m.
Newark Comm. Cen., Cedar Blvd., Newark 793-1400
Mailing Add.: c/o Hans Poschmann, Tournament Dir., 4621 Seneca Park Ave.,
Fremont 94538
- OAKLAND CHESS CLUB Fridays, 7:00-11:30 p.m.
Multipurpose Rm., Lincoln Elem. School, 225 Eleventh St., Oakland 444-9831
Mailing Add.: P. O. Box 1622, Oakland 94604
- ORINDA CHESS CLUB Thursdays, 7:30 p.m.
Orinda Comm. Church, 10 Irwin Wy., Orinda Village, Orinda -
Mailing Add.: P. O. Box 504, Orinda 94563 254-4059 (Duncan D. Campbell, Pres.)
- RICHMOND CHESS CLUB Fridays, 7:00 p.m., except the first Thursday instead of
the first Friday
Our Lady of Mercy Church, 301 W. Richmond Ave., Point Richmond -
Mailing Add.: c/o Leonard Trottier, Sec., 5315 MacDonald Ave., El Cerrito 233-1595
94530
- SAN QUENTIN CHESS CLUB Prison inmates only
Mailing Add.: c/o Jack D. Oetli, Sponsor, Intern Coach, Dept. of Corrections,
California State Prison, San Quentin 94964 454-1460
- VISALIA CHESS CLUB Fridays, 7:30 p.m.
Rec. Park Bldg., 345 No. Jacob St., Visalia (209) 732-3411
Mailing Add.: c/o Chris A. Fotias, Sec.-Tr., 1615 W. Kaweah Ave., Visalia 93277
- WALNUT CREEK CHESS CLUB Tuesdays, 7:00 p.m.
Walnut Creek Park and Rec. Bldg., Civic Dr. and No. Broadway, Walnut Creek 935-3300
- Mailing Add.: P. O. Box 391, Walnut Creek 94597

*Temporarily suspended from active membership, "since it is in the process of re-organizing its financial and constitutional structure and is therefore unable to pay its assessments for a time."

NEWS

(Continued from page 2.)

Bay Area Amateur Biggest USCF Tournament All Year
By MARTIN E. MORRISON
Scacchic Voice Editor

Battling an influenza epidemic and the most inclement weather this season, the Oakland Chess Club's Third Annual San Francisco Bay Area Amateur Open Championship Tournament still drew the largest attendance at a United States Chess Federation tournament over the entire year in the Bay Area. This tournament thus climaxed a year of unprecedented USCF activity in the Central California area, clearly due, in this writer's opinion, to the advent in this area of a regional organization dedicated fully to the promotion of the USCF--the Central California Chess Association (CCCA).

The night of Friday, 13 December, lived up to its reputation, battering the Bay Area with rain and gusts of up to seventy miles per hour, but gave way, as if miraculously for the tournament, to a crisp, cloudless blue sky. Tournament players began to enter the CACA Oakland Lodge at Eighth and Harrison Streets in Oakland as early as 9:00 a.m. to enter themselves in this annual tournament, the traditional culmination of the year's chess tournament activity. One of the first to come was one of USCF's staunchest supporters, Director Robert A. Mitchell, of Klamath Falls, Oregon, who yearly makes the 300 mile trip to participate. Also present was the perennial staff of the Oakland Chess Club: Martin E. Morrison and Elwin C. Meyers, to register, Raymond Ng, to direct, and Richard Lee, to act as general factotum; the club's president, Theodore E. Anderson, was unfortunately unable to attend this year. As registration quickly rose to a peak of forty-one players, it was obvious that this was to be the largest USCF tournament held over the entire year in the Bay Area. In addition, almost one-fifth of the players either joined the USCF or renewed their membership at the tournament.

Promptly at 11:00 a.m. Mr. Ng began the traditional players' meeting, explaining the more important rules applicable to this five round Swiss System tournament. Players then proceeded to their first round games, after which the names of losers and winners alike were placed in the fish bowl for the door prize drawing. Lucky winners of the prizes reserved for pre-registrants were James B. Shearer and Duncan D. Campbell, President of the Orinda Chess Club; winners of the general door prizes were Leonard Frottier, CCCA Treasurer and Richmond Chess Club Secretary, and Gary E. Wilson. Prizes included chess books, The Blue Booklet and Encyclopedia of Chess for Central California, a subscription to Scacchic Voice, and many chess magazines from around the country.

After a speedy round two and three, players returned on Sunday for a more leisurely round four and the crucial round five. One of the highlights of the afternoon was the presence of Richard H. Shorman, CCCA Publicity Director and chess columnist for the Argus and Hayward Daily Review, who in his inimitably patient and interesting manner annotated orally the best games of the tournament for players and bystanders alike. Then the final results of the tournament began to pour in. First to be announced was the victory of David J. Forthoffer over Robert Hamme, thus netting him a perfect 5-0 score and the \$43.00 overall prize, plus a beautiful trophy and the Amateur Champion title. B Division winner was René Saguisag, originally from the Phillipines, and C Division winner was Rinehard F. Boehme, each of whom were given more than a triple return of their entry fee, \$18.00. Awarded books were Clement E. Falbo and Leonard Petty, for their second place wins in the B and C Divisions, respectively. It was after 7:00 p.m., however, when the Second A was determined, when Gene Bromley defeated Curtis R. Wilson, to give Mr. Bromley the highest tie-breaking score.

This tournament continued the practice started by the CCCA's Regional Open at Berkeley (June 1968) and common in many areas of the United States by posting for public inspection the budget of the tournament. Cash prizes were based on a percentage of the net profit from the tournament; the actual amount of cash thus depended on the degree of success of the tournament. This openness on the part of the Oakland Chess Club should be highly commended, and this writer hopes to see this procedure become standard for all tournaments held in this area.

We congratulate the Oakland Chess Club for providing a fine tournament and for bringing to the attention of the chess public that the West Bay is not the only fertile tournament area!

*

Monterey Amateur Open Chess Tourney

By WILLIAM KENNEDY

CCCA Assistant Publicity Director for Monterey Co.

The Monterey Amateur Open Chess Tourney was played Saturday and Sunday, 2 and 3 November, at the Casa Alvarado Chess Center. Winner, with a score of $4\frac{1}{2}$ - $\frac{1}{2}$, was Theodore Yudakufski. Ten players joined together to initiate the first of what may be an annual event in Monterey chess tournaments. The other nine entrants finished in the following order with the scores indicated: Jerry Jennings ($3\frac{1}{2}$ - $1\frac{1}{2}$), Francis Mills (3, $13\frac{1}{2}$), Theodore Dimnick (3, $10\frac{1}{2}$), Thomas L. DeLong ($2\frac{1}{2}$ - $2\frac{1}{2}$), Col. Charles J. Daly (2, $13\frac{1}{2}$), James Kilcrease (2, $12\frac{1}{2}$), Per Johansen (2, 8), David Hawley ($1\frac{1}{2}$ - $3\frac{1}{2}$), David Vining (1-4).

Mr. Yudakufski was also the winner of the club's November Rapid Transit Tournament. Gene Newmann placed second, and Jerry Jennings and Ben Lyon tied for third.

The club's next tournament, now in progress, is the Winter Rating Tournament, a five round Swiss System. It is USCF rated, and players must be members of the USCF. Prizes and awards will be given as entries permit.

*

Oakland Chess Club Hosts Christmas Party

By MARTIN E. MORRISON

Scacchic Voice Editor

On 13 December, their last meeting day of the year, the Oakland Chess Club turned from the mere playing of chess to something designed to provide an opportunity for more social contact on the part of the members. Since the club has been steadily acquiring new members over the past year, it was thought that advantage should be taken of the holiday season for getting members more closely acquainted.

Club treasurer, Richard Lee, devised a guess-the-color-of-the-pawn-under-each-of-the-six-cups game, which provided the first diversion from the normal routine and netted prizes for six lucky members. Then a Christmas cake was cut, and a beautiful one it was (our hat is off to Mr. Lee for selecting it); most of the members managed to steal away from their accustomed games to devour eagerly the two-inch-square slices. All the while we were serenaded with music appropriate to the season.

All in all, this writer must admit that winning one of the guessing prizes, partaking of the delicious cake, and listening to the Christmas music contributed to a night of general respite and unorthodox merriment. The practice of such breaks in the normal club routine, well-known in many other parts of the United States, is enthusiastically recommended to other clubs.

*

Chess Life, Scacchic Voice Top Publicity List

The Publicity Directors of the Oakland Chess Club, in their continuing effort to improve chess organization and to make the most efficient use of tournament publicity, conducted a survey at the Third Annual San Francisco Bay Area Amateur Open Championship Tournament to determine through which media chess players learned of the tournament. A similar survey was conducted at the same club's February Open (1966). The results of each survey were publicly posted. A comparison of the two surveys follows:

Rank	1968 Medium	Feb. 1966	Dec. 1968	Change
1	<u>Chess Life</u> (organ of the United States Chess Federation)	0%	31%	+31%
2	<u>Scacchic Voice</u> (organ of the Central California Chess Association)	0%	18%	+18%
3-4	Tournament Circular	13%	14%	+ 1%
3-4	Word of Mouth	41%	14%	-27%
5-6	<u>Chess Review</u>	0%	12%	+12%
5-6	<u>San Francisco Chronicle</u>	10%	12%	+ 2%
7	<u>En Passant</u> (organ of the Oakland Chess Club)	16%	5%	-11%
8	<u>Chess in Action</u> (organ of the Chess Friends of Northern California)	16%	3%	-12%
9	<u>Oakland Sunday Tribune</u>	4%	3%	- 1%

(It must be pointed out that this is a survey based on where the players thought they learned of the tournament, so that although announcements of the Amateur Championship did not appear in the San Francisco Chronicle or Chess in Action, some players thought they had appeared there. Also, other differences exist which make the two sets of figures not directly relatable; e.g., the February Open was a CNC tournament, whereas the Amateur Championship was a USCF tournament. Nevertheless, the figures are useful in showing general trends.)

26 Central Californians Named USCF Directors

The USCF, through its organ Chess Life (January 1969), has released the names of California's USCF State Directors, twenty-six of whom reside in the Central California area. Colonel Charles J. Daly, of Carmel, is one of the three Region VIII (Pacific) USCF Vice Presidents (Officer-Director). Other Directors from Central California are: Charles G. Parcels, of Folsom; Anthony J. Dimilo, of Carmichael; Neil T. Austin, Ostap Bender, Ojars A. Celle, John A. Hudson, Dr. Alex Janushowsky, of Sacramento; Sergius Von Oettingen, of Davis; Paul T. Hubbard, of Ione; Meredith E. Mattingly, of Lodi; Fred Kimball, of Twain Harte; Frank M. Olvera, Sr., Manuel Rivera, of Pittsburg; Robert L. Oyster, of Antioch; Martin E. Morrison, of Oakland (Scacchic Voice Editor, who was completely surprised when his name appeared in the USCF listing); K. Michael Goodall, of Berkeley; William G. Addison, George Koltanowski (Life Director), Guthrie McClain, Charles Savery, Max B. Wilkerson, of San Francisco; James E. Hurt, of Saratoga; E. H. Mueller, of Campbell; William T. Adams, of San Jose; Theodore Yudakufski, of Monterey.

California State Directors are selected through the official USCF state affiliate, the California State Chess Federation (CSCF). Directors from all states comprise the USCF Board of Directors, which "is responsible over the management of the Federation: it shall formulate general policy, write the Bylaws, and elect the officers" (USCF Bylaws, Article VI, Section i). USCF membership has increased phenomenally over the past year to 11,382 (+16.6%). This increase has brought about the selection of three additional Directors for our state.

All USCF members, and others, are encouraged to discuss freely with their State Directors all matters of interest to them, so that the Directors can more actively perform their duties and effect USCF policies in accordance with the needs of their areas.

Sosnick Wins 15th Davis

The Fifteenth Annual Davis Rated Tournament of the UC Davis Chess Club was won by Steven Sosnick, followed by Sergius Von Oettingen, club tournament director and California State USCF Director. Michael Langhans won first place in the B Division; second place went to Glenn Davis.

*****CCCA LEAGUE INTERIM REPORT*****
 By JACK W. DENNIS
 CCCA League Director

After three rounds of neck-and-neck play the CCCA League standings are as follows:

<u>Eastern Division</u>			<u>Western Division</u>		
<u>Rank</u>	<u>Team</u>	<u>Score</u>	<u>Rank</u>	<u>Team</u>	<u>Score</u>
1-2	Livermore Alphas	3 -0	1	San Quentin	2 -0 +bye
1-2	Concord B	3 -0	2	Hayward	2½ -½
3	Concord A	2 -1	3	Alameda	1½ -½ +bye
4	Livermore Omegas	1½ -1½	4-5	Oakland Oaks	1½ -1½
5-6	Orinda	1 -2	4-5	Oakland Stingers	1½ -1½
5-6	Martinez A	1 -2	6	Richmond	0 -2 +bye
7	Martinez B	½ -2½	7	Newark	0 -3
8	Walnut Creek	0 -3			

Pairings for February and March:

<u>Date</u>	<u>Home Team</u>	<u>Visiting Team</u>	<u>Date</u>	<u>Home Team</u>	<u>Visiting Team</u>
7.II	Concord A	Livermore O's	8.II	San Quentin	Newark
11.II	Walnut Creek	Martinez B	14.II	Richmond	Hayward
13.II	Orinda	Martinez A	14.II	Oakland Stingers	Alameda
14.II	Concord B	Livermore A's	Bye	Oakland Oaks	
7.III	Livermore Alphas	Martinez B	8.III	San Quentin	Hayward
7.III	Livermore Omegas	Martinez A	10.III	Alameda	Oakland Oaks
7.III	Concord B	Walnut Creek	11.III	Newark	Richmond
14.III	Concord A	Orinda	Bye	Oakland Stingers	

BOOK NOTES
By MARTIN E. MORRISON
Scacchic Voice Editor

CFNC TOURNAMENT BOOK OF THE 1968 OAKLAND OPEN CHESS CHAMPIONSHIP TOURNAMENT. Privately published by the CFNC Board of Directors, November, 1968. Pp. 27+v; complete crosstables, statement by CFNC Board of Directors, indices to openings and players. Price: \$1.00. Order from Richard R. Shorman, 27858 Tampa Avenue, Hayward, CA 94544.

Before a review of the content of this booklet is undertaken, let me say a few words to clear up the confusion about the title of this tournament. The Oakland Chess Club has never held nor authorized the holding of an "Oakland Open Chess Championship Tournament"; you can be sure that it will do so when, and only when, it, not some outside organization, deems it proper. The tournament referred to in the title of the booklet is the "1968 CFNC Summer Chess Championship Tournament."

As to the content of the booklet, this writer finds that it is carefully and excellently done, the credit for which must go to Richard R. Shorman, who "selected, edited, and checked" the ninety-four games, although Mr. Shorman is given only peremptory notice by the CFNC Board of Directors in their statement (p. iv).

The booklet opens with a complete crosstable of the tournament, which, Mr. Shorman tells us, is slightly incorrect, because he copied it verbatim from Chess in Action, CFNC's official organ, which does not correlate in a few instances with his presentation. There follow two indices, one to openings and one to players—a great help for the reader, but much extra work for the editor. The main bulk of the booklet consists of ninety-four games, at least one by every participant in the tournament.

The booklet is handsomely xeroxed and should be an especial item of interest for those who participated in the tournament. The price is quite inexpensive, considering the expense involved in reproduction. Mr. Shorman tells us that he expects the booklet to be a financial loss (so unfortunately there will be no profits to "be utilized by CFNC to further promote chess in Northern California" p. v7); however, Mr. Shorman's efforts have seen to it that the booklet will be far from a loss as an historical record of chess events in Central California—something which is greatly needed. The booklet is heartily recommended to those interested.

*

NEW STRATEGY IN THE CHESS OPENINGS. Hugh E. Myers. Privately published by James R. A. Schroeder, September 1968. Pp. 26; diagrams, bibliography, addenda. Price: \$2.00 7. Order from James R. A. Schroeder, P. O. Box 5288, Cleveland, Ohio 44101.

The subtitle of this book is necessary to explain its content: "Being chiefly a recommendation for Nimzovich's Defense 1 P-K4, N-QB3; 2 P-Q4, P-Q4, but also giving various seldom played defenses against 1 P-Q4, including Tchigorin's Defense, Dudapest Gambit, East Indian Defense, etc., suggest~~ing~~/ new opening ideas for White, including the concept of playing "reversed" openings—with a move in hand." What more needs be said?

The book opens with a detailed introduction by the author, after which six variations are given in defending 1 P-K4, and defenses against 1 P-Q4, 1 P-QB4, and 1 P-KB4. Two pages are then used to explain the author's "New System for White." The author ends sixteen pages of opening recommendations with the following observation: "It will be enough if they open the eyes of some players to the fact that there are still new worlds to be explored on the chessboard and that our beautiful game is far from dead" (p. 16).

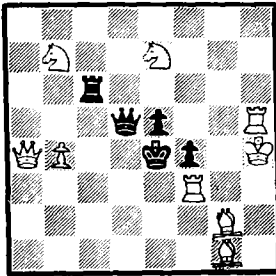
Six pages of Games Section follows, which contains mostly the author's games, because, as he says, "I believe a writer should have some credentials, and I'm willing that mine should be the quality of my games" (p. 16). A bibliography of ten books is included, which were of most use to the author in his researches and a number of addenda in the form of notes and more games.

The book is photo-offset with many diagrams and careful documentation and is handsomely bound in a cover designed by the Walford Studio, of Dayton, Ohio. The book should be a fine addition to the library of any chess player who is interested in openings, especially in original work in this field.

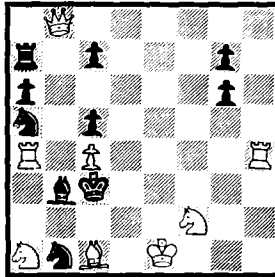
SCACCHIC VOICE COLUMNS REPRINTED

Scacchic Voice is pleased to note that Chess 'N Checkers, published out of Detroit, Michigan, by J. Myrick Frazier, has reprinted in its December 1968 issue (X, ii) Scacchic Voice Analysis Columnist James B. Reynolds's column of August 1968 and Scacchic Voice Games Columnist David Glanville's column of August 1968.

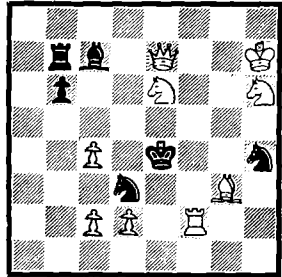
MATING MAZE
By RICHARD LEE
Scacchic Voice Problems Columnist
(CCCA Assistant Publicity Director
For Alameda County, Oakland Area)



No. 45
W mates in two.



No. 46
W mates in two.



No. 47
W mates in two.

"In Mate in Two Moves, Brian Harley grades the value of keys in order of increasing merit as follows: (1) sacrificial, (2) flight giving, (3) self-pinning of a white man, (4) unpinning of a black man, (5) allowing a black check.

"A key move may possess two or more of these characteristics, and if it does, it is the more meritorious. . . . The key move of problem 46 is of the striking type, designed to please the solver even if it does not prove to be difficult. That of problem 47 is perhaps somewhat more deceptive, since it seemingly renders impotent the knight battery." Kenneth S. Howard, The Enjoyment of Chess Problems (3rd rev. ed.; New York: Dover Publications, c. 1961), p. 34.

Solutions to last issue's problems: No. 43--B-R6; no. 44--B-K5.

CLASSIFIED ADVERTIZEMENT
(Rate: 5¢ per word per issue on any subject.)

CHess BOOKLET: CFNC Tournament Book of the 1968 Oakland Open Chess Tournament /sic--for "1968 CFNC Summer Chess Championship Tournament"/. Xeroxed, 27 pages. Contains at least one game of each participant. Send \$1.00 to Richard R. Shorman, 27858 Tampa Avenue, Hayward, CA 94544.

LETTERS TO THE EDITORS

EDITORS:

Thank you for the support you have given Chess Digest Magazine in 1968. I should like to tell you about our future plans.

CHess DIGEST MAGAZINE FOR 1969: Instruction Section to make you an expert; Opening Section based on translation of theoretical articles from Shakmatny Bulletin, supplemented from other sources to give complete opening coverage; Seldom Played Openings Section devoted to Gambits; Opening Systems Section; Reader's Page; Middle Game Section; Annotated and Unannotated Game Section; News, Comments, Special Reports Section; End Game Section; Accumulative Index by variations for the Postal and Tournament Player. A COMPLETE MAGAZINE FOR ALL CLASSES OF PLAYERS. Now publishing QUARTERLY for \$5.80 per annum.

Please pardon the above's sounding so commercial, but I wanted to be as brief as possible. Each subscriber is important to me--not just a name or address--and I hope I shall be given the chance to prove this to each and every one of your readers.

/s/ Kenneth R. Smith
Editor, Chess Digest Magazine

We surely vouch for the integrity and hard labor which Mr. Smith pours into his magazine. Anyone who has seen any of the issues of his magazine from last year hardly needs to be reminded of this. We know that Mr. Smith took a personal financial loss from the publication of last year's series, but he was determined to finish out the year and take the loss, because he felt he had an obligation to his readers. Mr. Smith has also been a consistent supporter of Scacchic Voice and the USCF. We therefore call special attention to Mr. Smith's publication.--EDS.7

CHESS IS MY HOBBY
By JAMES B. REYNOLDS
Scacchic Voice Analysis Columnist

BLINDFOLD PLAY. Of course, with many arguments involved, George Koltanowski appears really to have been the best of all blindfold chess players in the world; this columnist is not after an argument, however. It is simply that I learned quite a bit about blindfold play from George. For some five years or so I was a Red Cross volunteer in San Francisco. I was to visit hospitals where veterans and GI's were patients and to entertain them the best I could. Being an ex-Navy veteran, I appreciated how these fellows might feel. In my visits I attempted to cheer up these men with jokes, anecdotes, mock singing and dancing, just plain conversation, and, yes, playing chess with or teaching it to the ones interested.

At the Army's Letterman General Hospital at the Presidio in San Francisco it seemed my chess antics were most on demand. Many times I found myself playing anywhere from six to twenty patients in a simultaneous exhibition of chess. I did fairly well; on some nights, however, I found myself with only from two to four chess players interested. When this happened, the men did not want to play the game, saying I had a cinch. One night I decided the only answer was to play them with my back to the board, or, simply, blindfold chess. At least this way a couple would get a draw with me, and doing so made them happy. During the following game I was playing two bed-ridden GI's and succeeded in winning both, but I consider this one the more interesting, the other being rather drawn out. Actually, I made mistakes, but I am not Koltanowski and thought it interesting in view of the blunders on both sides. It was played at Letterman on 16 March 1956.

White: James B. Reynolds (sans voir)
Black: Private First Class Monroe
Irregular Opening

1 P-K4 P-K4
2 N-KB3 P-QB4
Unorthodox, of course, and in blindfold play this always bothered me.
3 NXP P-Q4
4 P-J4 P-KB4
5 PxQP QxP
6 P-QB3 N-QB3
7 B-QB4 Q-Q3
8 B-B7ch K-K2
9 B-N5ch N-B3
10 BxNch KxB
11 O-O B-K3
12 BxB KxB
13 R-K1 PxP?
14 PxP?? . . .
Really bad, as 14 B-N4ch wins the queen. George would see it without seeing!
14 . . . NxP
15 N-Q2? . . .

Blindfolded, I should not be that blind! I could still win the queen with N-B4ch.

15 . . . K-B3
16 N-N4ch! . . .
Waking up a little bit.
16 . . . PxN?
So finally I got the queen anyway.
17 N-K4ch K-K3
18 NxQch KxN
19 QxNch K-B3
20 QR-B1ch K-N4
21 R-K5ch K-R3
22 Q-R4ch K-N3
23 R-N5 mate

---(paid advertisement)---

Sample books:
DeGroot, Thought and
Choice in Chess
London 1899 (International Chess Tournament)
St. Petersburg 1914

Chess Clocks - Sets - Books
Please write for free catalog
K. Rattmann
2 Hamburg 74
Postfach 365
Germany



Many other books and magazines available.
World-wide connexions.
Please attach either personal check or international money order.
All prices post-free.



BUSINESS PROCEEDINGS OF THE CCCA
By MARTIN E. MORRISON
CCCA Secretary

The annual meeting of the Central California Chess Association was held on Friday, 10 January 1969, in the Faculty Dining Room of Lincoln Elementary School, 225 Eleventh Street, Oakland (the Oakland Chess Club's quarters). The meeting was called to order at 8:24 p.m. by the Chairman, Jerome M. Long, the Secretary, Saleh Mujahed being absent. It was adopted by general consent that the Editor, Martin E. Morrison, serve as Secretary pro tempore.

The total attendance for the meeting was as follows: Jerome M. Long (Concord Chess Club); Jerry Crimmins, Carl R. Ehmann, Jerry Friedman, Everett McNally, Richard R. Shorman (Hayward Chess Club); Harold Barnett, Wes Nelson (Livermore Chess Club); Hans Poschmann (Newark Chess Club); Charles A. Maddigan, Elwin C. Meyers, Martin E. Morrison (Oakland Chess Club); Jack W. Dennis, Leonard F. Trottier (Richmond Chess Club); Saleh Mujahed (Walnut Creek Chess Club)—seven of sixteen affiliates, fifteen members. Nonmember present: Vance Carpenter, of Hayward.

It was moved by Mr. Morrison, seconded by Mr. Dennis, and adopted unanimously THAT THE MINUTES OF THE PREVIOUS MEETING (REGULAR, 11 OCTOBER 1968) BE APPROVED AS PUBLISHED IN THE OFFICIAL CCCA ORGAN, WITH THE FOLLOWING CORRECTIONS: (1) THAT MR. DENNIS'S MOTION REGARDING THE DATE OF THE NEXT MEETING BE CORRECTED BY STRIKING OUT "10 OCTOBER 1969" AND INSERTING "10 JANUARY 1969"; (2) THAT MR. MORRISON'S MOTION REGARDING MR. CLIPSON'S RESIGNATION BE CORRECTED BY ADDING AFTER THE WORD "CLIPSON" "BECAUSE OF HIS MOVING FROM THE AREA."

It was moved by Mr. Poschmann, seconded by Mr. Morrison, and adopted unanimously THAT ON THE APPLICATION OF MR. POSCHMANN, CHAIRMAN, FREMONT CHESS CLUB, FREMONT CHESS CLUB BE AFFILIATED TO THE CCCA.

The Treasurer, Mr. Trottier, gave the following:

REPORT OF THE TREASURER OF THE CCCA
FOR THE PERIOD 4 OCTOBER 1968 TO 10 JANUARY 1969

<u>Receipts</u>	
Balance on hand 4 October 1968	\$ 3.45
Bimonthly assessments of affiliates (payable 5 October, 5 December)*—257 members	\$100.00
USCF memberships received	68.00
New Year Open Chess Tournament (Walnut Creek Chess Club) assessment, 44 players @ 25¢ ea. ..	11.00
New Year Open Chess Tournament rating fee payment	9.30
One chess clock sold	12.50
	<u>200.80</u>
	<u>\$204.25</u>

<u>Disbursements</u>	
USCF memberships paid to USCF	\$ 68.00
USCF rating fees	11.00
To the Editors for the official organ	25.00
To the Treasurer for postage	2.00
Balance on hand 10 January 1969	98.15
Total	<u>\$204.25</u>

*Oakland Chess Club deducted \$2.25 from their 5 December 1968 assessment as one-half the cost of the CCCA's post-office box started with that club for the quarter 1 January-31 March 1969 (as per CCCA resolution of 11 October 1968).

Total CCCA League board fees collected: \$75.00 (15 teams).

At this point the Secretary, Mr. Mujahed, entered and took over the duties of Secretary.

The League Director, Mr. Dennis, the Rating Administrator, Mr. McNally, the Editors, Messrs. Morrison and Meyers, Mr. Morrison reporting, and the Publicity Director, Mr. Shorman, gave their annual reports.

Mr. Trottier, Chairman of the standing Clock Committee, gave the report of that committee.

Mr. Lee, Chairman of the ad hoc Trophy Committee, was absent. It was moved by Mr. Morrison, seconded by Mr. Poschmann, and adopted unanimously THAT THE AD HOC TROPHY COMMITTEE BE DISCHARGED, AND THAT THE MATTER BE RECOMMITTED TO THE LEAGUE DIRECTOR.

Mr. Ellis Plastik, CCCA's observer at the Boys' Club Executive Board meeting, was absent. It was moved by Mr. Friedman, seconded by Mr. Poschmann, and adopted unanimously THAT MR. PLASTIK BE DISCHARGED FROM HIS DUTY TO REPORT.

New business.

It was moved by Mr. Meyers, seconded by Mr. Dennis, and lost that the CCCA

Bylaws be amended by striking out from Article IV, Section ii, "and after CCCA" and inserting "except that the League Director shall be elected at the regular meeting of the CCCA held in July, and the officers," and also by adding in Article V, Section i, after "officers," "(except the League Director)."

The CCCA then proceeded to its annual elections for office. It was moved by Mr. Meyers, seconded by Mr. Ehman, and adopted unanimously that there be nominations from the floor for all offices and that in the case of contested offices be by ballot. Mr. Meyers also invoked Article V, Section iv, of the CCCA Bylaws to order a vote by affiliates in the case of contested offices.

Messrs. Long and Morrison were nominated for Chairman. It was moved by Mr. Morrison as a motion incidental to the election of Chairman, seconded by Mr. Meyers, and lost that the CCCA Bylaws be amended by striking out from Article IV, Section i, "except that of Chairman."

It was moved by Mr. Morrison, seconded by Mr. Friedman, and adopted unanimously that the CCCA recess for fifteen minutes. The Chairman declared the meeting recessed for fifteen minutes at 10:42 p.m.

The meeting was again called to order at 10:57. The Chairman announced the result of the balloting:

Mr. Long received9
Mr. Morrison received3
Necessary for election7

THE CHAIRMAN DECLARED MR. LONG ELECTED AS CHAIRMAN.

Messrs. Meyers (declined), Morrison, Mujahed (declined) were nominated for Secretary. It was moved by Mr. Friedman, seconded by Mr. Barnett, and adopted 10-1, the Chairman having had the vote counted, THAT MR. MORRISON BE ELECTED AS SECRETARY.

Mr. Trotter was nominated for Treasurer. It was moved by Mr. Poschmann, seconded by Mr. Morrison, and adopted unanimously THAT MR. TROTTER BE ELECTED AS TREASURER.

Messrs. Poschmann, Dennis, and Messrs. Dennis and Long together (Mr. Long declined) were nominated for League Director. The Chairman announced the result of the balloting:

Mr. Dennis received7
Mr. Poschmann received4
Necessary for election6

THE CHAIRMAN DECLARED MR. DENNIS ELECTED AS LEAGUE DIRECTOR.

Messrs. McNally and Meyers (declined) were nominated for Rating Administrator. It was moved by Mr. Morrison, seconded by Mr. Poschmann, and adopted unanimously THAT MR. McNALLY BE ELECTED AS RATING ADMINISTRATOR.

Messrs. Morrison and Meyers together were nominated for Editors. It was moved by Mr. Poschmann, seconded by Mr. Barnett, and adopted unanimously THAT MESSRS. MORRISON AND MEYERS TOGETHER BE ELECTED AS EDITORS.

Messrs. Plastrik and Shorman together were nominated for Publicity Directors. It was moved by Mr. Barnett, seconded by Mr. Friedman, and adopted unanimously THAT MESSRS. PLASTRIK AND SHORMAN BE ELECTED AS PUBLICITY DIRECTORS.

It was moved by Mr. Morrison, seconded by Mr. Dennis, and adopted unanimously THAT THE TREASURER BE AUTHORIZED TO DISBURSE THE NECESSARY FUNDS TO KEEP RENEWING THE CCCA'S USCF CHARTER.

It was moved by Mr. Meyers, seconded by Mr. Morrison, and adopted unanimously THAT THE CCCA EXTEND A VOTE OF THANKS TO LEAGUE DIRECTOR JACK W. DENNIS FOR DILIGENTLY SEEING TO THE ESTABLISHMENT OF CCCA LEAGUE PLAY AFTER HIS PREDECESSOR HAD SUDDENLY TO MOVE FROM THE AREA.

It was moved by Mr. Morrison, seconded by Mr. Friedman, and adopted unanimously THAT THE CCCA ADVISE AND CONSENT TO THE PUBLICITY DIRECTOR, MR. SHORMAN'S APPOINTMENTS OF THE FOLLOWING AS ASSISTANT PUBLICITY DIRECTORS IN THEIR RESPECTIVE AREAS: MR. MUJAHED (CONTRA COSTA COUNTY), MR. WES NELSON (ALAMEDA COUNTY, LIVERMORE AREA).

It was moved by Mr. Morrison, seconded by Mr. Shorman, and adopted THAT IT BE A POLICY STATEMENT OF THE CCCA THAT (1) ANY MEMBER OF THE CCCA IN A POSITION OF RESPONSIBILITY, E. G., AN OFFICER, ARE LEGALLY OBLIGED BY ACCEPTING SUCH A POSITION TO ABIDE BY THE CCCA'S BYLAWS AND ALL RESOLUTIONS ADOPTED; (2) IF SUCH A PERSON TAKES A POSITION OF RESPONSIBILITY WITH ANOTHER CRESS ORGANIZATION ALSO, HE MUST BE AWARE THAT HE WILL BE EXPOSED TO POSSIBLE CONFLICTS OF INTEREST BETWEEN HIS OBLIGATIONS TO THE TWO ORGANIZATIONS; (3) IF HE FINDS THAT HIS DUTIES TOWARD THAT OTHER ORGANIZATION REQUIRE HIM TO VIOLATE HIS OBLIGATIONS TO THE CCCA, IT IS INCUMBENT UPON HIM TO RESOLVE THE CONFLICT OF INTEREST OR TO RESIGN FROM ONE, OR BOTH, ORGANIZATIONS; (4) NO OFFICER OR MEMBER OF THE CCCA HAS THE AUTHORITY TO SPEAK FOR THE CCCA, UNLESS SUCH AUTHORITY IS EXPRESSLY GRANTED HIM, AND UNAUTHORIZED STATEMENTS ARE NULL AND VOID AND HAVE NO LEGAL STANDING.

It was moved by Mr. Morrison, seconded by Mr. Meyers, and adopted unanimously THAT THE CCCA BYLAWS BE AMENDED BY STRIKING OUT FROM ARTICLE III, SECTION II, "BOTH . . . PROFIT" AND INSERTING "ON THE BASIS OF THE NUMBER OF MEMBERS IN THE AFFILIATE" AND ALSO THAT THE FOLLOWING RELEVANT RESOLUTION BE ADOPTED: (1) CCCA'S USCF CHARTER SHALL NOT BE USED BY AN AFFILIATE FOR ITS EVENTS WITHOUT WRITTEN AUTHORIZATION FROM THE CCCA CHAIRMAN AT LEAST THIRTY DAYS IN ADVANCE OF THE EVENT, WHO SHALL IMMEDIATELY INFORM ALL THE OTHER OFFICERS OF THE CCCA; SUCH AUTHORIZATION IS SUBJECT TO REPEAL; (2) THE CHARTER SHALL NOT BE USED FOR OTHER THAN "OPEN, REGIONAL TOURNAMENTS," AS SPECIFIED BY THE USCF; (3) THE NORMAL CHARGE FOR USING THE CHARTER IN THIS WAY SHALL BE \$7.50, THE CCCA BEING ABLE TO ALTER THE CHARGE OR REVOKING AN AFFILIATE'S PRIVILEGE OF USING THE CHARTER IN WHOLE OR PART; (4) THIS RESOLUTION SHALL BE RETROACTIVE.

It was moved by Mr. Morrison, seconded by Mr. Poschmann, and adopted unanimously THAT THE CCCA BUY THREE CHESS CLOCKS RECEIVED BY THE EDITORS IN PAYMENT FOR AN ADVERTISEMENT AT THEIR DISCOUNT, AND THAT THE CLOCK COMMITTEE INCLUDE THESE WITH THEIR OTHER CLOCKS AND SELL THEM BEFORE ANY OTHERS, ALL PROFITS TO GO DIRECTLY INTO THE CCCA TREASURY.

It was moved by Mr. Meyers, seconded by Mr. Friedman, and adopted unanimously THAT THE EXECUTIVE BOARD REPORT AT THE NEXT MEETING REGARDING THE FEASIBILITY AND PRACTICAL DETAILS OF A CCCA TOURNAMENT, TO CONSIST OF AN ADULT AND YOUTH SECTION AND TO REBATE ALL PROFITS BACK TO THE AFFILIATES IN PROPORTION TO THE PERCENTAGE OF THEIR MEMBERS PARTICIPATING.

It was moved by Mr. Morrison, seconded by Mr. Trottier, and adopted THAT THE CCCA'S NEXT REGULAR MEETING (IN APRIL) BE HELD ON FRIDAY, 4 APRIL 1969, 8:00 P. M., IN THE FACULTY DINING ROOM OF LINCOLN ELEMENTARY SCHOOL, 225 ELEVENTH STREET, OAKLAND (THE OAKLAND CHESS CLUB'S QUARTERS).

It was moved by Mr. Burnett, seconded by Mr. Poschmann, and adopted unanimously THAT THE MEETING ADJOURN SINE DIE. The Chairman declared the meeting adjourned sine die at 11:27 p.m.

NEW YEAR'S RESOLUTION: JOIN THE US CHESS FEDERATION
(Continued from page 2.)

USCF membership has always been desirable. Its periodical, Chess Life, is perhaps the finest in the US. It also provides national ratings, considered the rating by those who know. For those in Central California, the number of USCF tournaments in the area has increased tremendously, mainly because of the support given USCF by CCCA. Today there is an average of one USCF tournament per month in the area, and often there is more than one. A few years ago it was often necessary to make long trips and pay relatively high entry fees to play in USCF tournaments. CCCA-affiliated clubs have spread out USCF activity to new areas, and entry fees are usually \$5 or under—very inexpensive tournaments, yet with good prizes. In addition, CCCA has introduced into Central California the idea of rating league matches in USCF. Consequently, USCF membership guarantees enough USCF activity to satisfy even the most active of players.

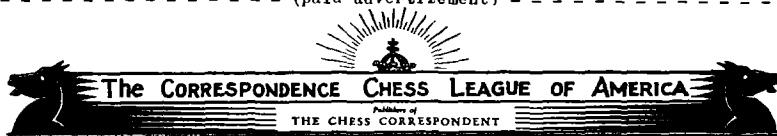
Of special interest to CCCA members is the discount rate of USCF membership. Adults may join USCF through CCCA at an annual rate of \$8—a saving of \$2! This discount applies to renewals, as well as new memberships. If you are under 21, the annual USCF dues are only \$4—\$2.50 less than a subscription to Chess Life alone!

Why not, then, subscribe to a wonderful chess magazine, obtain a meaningful rating, make yourself eligible to play in USCF tournaments, and support our national organization, while getting a bargain rate: join USCF through CCCA.

PHOTOGRAPHS NEEDED FOR SCACCHIC VOICE

Can be returned, if requested. Credit will be given to the photographer. Photographs may be of any type: tournaments, club activities, matches, etc. Please give full details of the circumstances and personalities of the photographs.

----- (paid advertizement) -----



An invitation to join.
Runs the official annual
US Correspondence Chess
Championship.

DONALD R. TAYLOR
C. C. L. A. Secretary
706 Mt. Hope Avenue
Cincinnati, Ohio 45204

Represents the US on the
international level.
Write Secy. for information.

USCF-CCCA RATINGS
 By EVERETT MC NALLY
 Rating Administrator, CCCA

The purpose of USCF-CCCA Ratings, to be published bimonthly, is to give every CCCA member a current rating for participation in USCF and CCCA tournaments and CCCA League play. In this system, a CCCA member having an official USCF rating will be given that rating (no mark after the rating indicates an established rating; * indicates a provisional rating based on ten to eighteen games [such ratings are less reliable than established ratings]; # indicates a rating based on four to nine games [such ratings are highly unreliable]), which will then be adjusted on the basis of rated play between him and other CCCA members (indicated by §); however, such an adjusted rating will be reconciled to the official USCF rating of the member whenever a new rating is listed for him in the quarterly rating lists published in Chess Life, the official organ of the USCF (indicated by the original sigla described supra). A CCCA member not having an official USCF rating will temporarily be given his most current CFNC rating (indicated by %), or, if he has not CFNC rating, his most current club rating (indicated by &), or, if he has neither, the Rating Administrator of the CCCA may give him a rating (indicated by /). Once a member having such a rating plays a rated game with another CCCA member, his rating will be adjusted (indicated by §), and that rating will serve as the basis of further adjustment, unless he obtains an official USCF rating, in which case his rating will be reconciled and adjusted as explained supra. All ratings are adjusted using the USCF formula.

From the above it will be seen that official USCF ratings are the backbone of this rating system, which is therefore called the USCF-CCCA Rating System. It is hoped that in the future all CCCA members will become members of the USCF, so that such a rating system as this will be unnecessary, or so that USCF ratings will need only minor adjustment in the interim between the quarterly publication of official USCF ratings in Chess Life.

In this listing, USCF ratings have been corrected to the official listing published in the September Chess Life; CFNC ratings, to the official listing published in the Winter Chess in Action. CCCA League results through November have been included, and the list of CCCA members has been corrected to the 5 February assessment report.

*

Club symbols in parentheses after name:

A Alameda	L Livermore	D Orinda
B Berkeley YMCA	M Martinez	R Richmond
S College of the Sequoias	Y Monterey Peninsula	Q San Quentin
C Concord	N Newark	V Visalia
F Fremont	O Oakland	W Walnut Creek
H Hayward		

*

Expert ...2000 to 2199	Class B ...1600 to 1799	Class D ...1200 to 1399
Class A ...1800 to 1999	Class C ...1400 to 1599	Class E ...1199 and below

*

Alaimo, B. (M)	1534% Boer, G. (L)	1911§ Cook, F. (O)	1814%
Albrecht, E. (Q)	1580§ Britton, E. (O)	1485% Crimmins, J. (H)	1399%
Alexander, C. (O)	1750& Brooks, D. (N)	1614& Crosby, F. (H)	1674%
Allen, B. (H)	1814% Brown, M. (Q)	1550/ Crossland, M. (O)	1472*
Allen, W. (Q)	1589% Brown, P. (H)	1675§ Cuneo, R. (O)	1820
Anderson, L. (C)	1603% Brown, S. (M)	UNRTD Curtis, T. (L)	1620§
Anderson, F. (O)	1443§ Bush, J. (C)	1483 Damasceno, S. (M)	1477§
Arguello, A. (M)	1650/ Caldwell, E. (H)	UNRTD Delany, B. (H)	UNRTD
Arnstein, P. (R)	1438§ Cambell, K. (N)	UNRTD Dennis, J. (O, R)	1615#
Ausmus, R. (H)	1773& Campbell, D. (D)	1444# DeRosa, J. (C)	1521%
Ayer, M. (D)	1499% Canciamilla, M. (M)	1506& Dobin, L. (O)	UNRTD
Bailey, C. (M)	1600/ Canfield, E. (H)	UNRTD Dorfman, J. (O)	1240§
Beird, W. (F)	+ Carlson, P. (C)	1532& Dorsch, T. (H)	1877
Barnett, H. (L)	1058§ Carter, J. (C)	1660/ Earl, W. (C)	1525%
Barry, P. (L)	1669% Castellano, W. (H)	1737& Ebarth, H. (C)	+
Bartholomew, E. (H)	1586% Cerritelli, W. (L)	1500/ Ehmman, C. (H)	1660§
Bass, S. (W)	1404§ Chamberlain, W. (Q)	1737§ Eliason, J. (C)	1621%
Bauer, F. (O)	1500& Chew, W. (O)	UNRTD Erdy, E. (C)	1535%
Benge, L. (Q)	UNRTD Clapp, D. (C)	1802§ Evenson, M. (C)	1500&
Bentson, R. (G)	1449§ Claudio, D. (R)	1694§ Ewy, Sioux (C)	1550&
Betts, B. (M)	1551& Coffee, M. (D)	UNRTD Ewy, Stan (C)	1619&
Bigelow, G. (C, W)	1935# Cohen, G. (H)	1543% Flack, D. (F)	+

Fleming, D. (F)	+	Lopez, L. (H)	1722\$	Salo, E. (H)	1578&
Fleuriot, B. (D)	1640%	Louie, D. (O)	1684&	Sargent, R. (C)	1504&
Fong, V. (H)	1890%	Magness, S. (H)	UNRTD	Shiffer, J. (C)	1520&
Forthoffer, D. (O)	1981\$	Marchand, S. (R)	UNRTD	Schmidt, S. (O)	UNRTD
Fosaaen, J. (C)	1905\$	Marshall, G. (N)	1550	Schrock, D. (D)	1636\$
Fotias, C. (S, V)	1667	Marshall, J. (N)	UNRTD	Schulman, S. (O)	UNRTD
Fouch, R. (H)	1550%	Marski, W. (O)	1550&	Schwab, C. (R)	UNRTD
France, F. (C)	UNRTD	Martinez, R. (H)	1691%	Schwartz, E. (O)	UNRTD
Frandy, M. (H)	1631&	Masgalajian, D. (H)	UNRTD	Shearer, J. (L)	1631\$
Freeman, D. (A)	1633\$	McClain, S. (C)	1550&	Shepperson, A. (H)	1800/
Friedman, J. (H, O)	1664\$	McCullough, R. (C)	1800	Shernan, D. (D)	1617\$
Fung, D. (O)	UNRTD	McFarland, A. (D)	UNRTD	Shorman, R. (H)	2009\$
Garnett, T. (C)	1539%	McMullen, T. (L)	1600/	Sills, R. (N)	UNRTD
Gerhardt, J. (A, O)	1609%	McNally, E. (H)	1899\$	Silva, E. (H)	1498%
Gerhardt, W. (A)	UNRTD	McNow, M. (C, W)	1670#	Sisneros, A. (N)	UNRTD
Gerrand, J. (A, O)	1542%	McQuary, M. (D)	UNRTD	Sletner, A. (O)	1621&
Geymer, D. (D)	1655\$	McSwiggin, R. (L)	1590\$	Sloane, M. (O)	1516#
Giley, J. (M)	UNRTD	Merriman, C. (C)	1504&	Smith, A. (R)	UNRTD
Glanville, D. (O)	1506	Merriman, G. (C)	1504&	Smith, D. (L)	1631%
Goss, D. (C)	1319#	Meyers, E. (O)	1806	Smith, E. (O)	1550&
Gramm, G. (F)	+	Mihailoriki, N. (D)	1911\$	Sobol, O. (A)	1711%
Gray, S. (N)	UNRTD	Mitchell, D. (C)	1636&	Sutton, L. (A)	1500/
Greenwald, J. (M)	1705\$	Mitchell, R. (O)	1907\$	Swanson, R. (M)	1500/
Gushwa, E. (N)	1785\$	Moraghan, M. (C)	1497\$	Tabacco, L. (C)	UNRTD
Gushwa, S. (N)	1518\$	Morris, N. (C)	1511&	Tabacco, T. (C)	1536&
Guzman, R. (C)	1558*	Morrison, M. (O)	1598&	Tabler, C. (O)	1764\$
Hackners, W. (F)	+	Motquin, S. (C)	1552&	Thach, B. (H)	1594&
Hage, G. (L)	1514\$	Mujahed, S. (C, W)	1812\$	Thayer, J. (F)	+
Hale, J. (O)	1778#	Nyers, G. (H)	UNRTD	Thayer, M. (F)	+
Hale, R. (O)	1633#	Nace, B. (M)	1684\$	Thompson, D. (C)	1547\$
Hall, A. (A)	1565*	Nelson, A. (L)	1459\$	Thompson, F. (R)	1440%
Haumie, R. (O)	1978	Nelson, S. (A)	1721\$	Thompson, L. (H)	1689%
Hansen, D. (O)	UNRTD	Nelson, W. (L)	1650/	Trenberth, R. (O)	1905
Hansen, R. (O)	1826\$	Never, J. (F)	+	Tresz, S. (O)	1866
Haratini, T. (L)	1647%	Ng, R. (A, O)	1907\$	Tritch, M. (H)	UNRTD
Harcus, G. (C)	UNRTD	Nixon, E. (F)	+	Trottier, L. (R)	1544\$
Hendrickson, C. (L)	UNRTD	Nordell, L. (O)	1621%	Turner, L. (C)	1697%
Henderson, D. (C)	1453%	Norman, N. (R)	UNRTD	Turney, R. (O)	1451%
Henderson, J. (C)	1454&	Olander, L. (W)	1763\$	Twigg, D. (D)	1850%
Henderson, M. (C)	1527%	Olvera, F., Jr. (C)	1603\$	Ulrich, F. (C, O)	1562\$
Hengl, T. (F)	+	Olvera, F., Sr. (C)	1602	Underwood, K. (C)	1498
Hibbler, F. (O)	1643%	Olvera, R. (C)	1519&	Vadnais, L. (H)	1624&
Hirstio, V. (C)	1490/	Ort, G. (A)	1644% UNRTD	Vail, C. (C, W)	1660*
Holloway, R. (H)	UNRTD	Ortega, D. (H)	UNRTD	Van Sant, F. (O)	UNRTD
Horton, J. (N)	UNRTD	Osternig, L. (H, O)	1632%	Wait, D. (C)	1547\$
Hough, R. (O)	1876	Oyler, M. (C)	1524&	Wait, L. (C)	1609\$
Jacob, R. (W)	1585%	Oyler, R. (C)	1656%	Wallace, J. (N)	1800/
Jaramillo, J. (C)	1560&	Parker, W. (O)	UNRTD	Walters, D. (F)	+
Jemison, B. (R)	UNRTD	Parra, R. (D)	UNRTD	Watson, M. (C)	1981*
Jones, D. (D)	UNRTD	Partridge, B. (D)	UNRTD	Weber, G. (O)	1797\$
Joshi, P. (R)	UNRTD	Perkins, S. (H)	UNRTD	Weber, M. (A, O)	1892\$
Kilker, S. (W)	1662\$	Peterson, D. (M)	1483\$	Weiler, J. (C, W)	1535\$
Kitabayashi, S. (M)	1669\$	Peterson, J. (M)	1496\$	Weissenborn, H. (L)	1550/
Klinkenberg, D. (A)	1741\$	Plastrik, E. (M)	1050/	Weitzner, M. (M)	1533%
Kohl, L. (H)	1568%	Price, D. (F)	+	Wells, A. (C)	1570&
Kuehl, L. (C)	1550&	Poschmann, H. (F, N)	1715\$	Werner, E. (M)	UNRTD
Lamsney, P. (O)	1805%	Powell, B. (M)	1650/	West, S. (C)	1531&
Landfried, D. (H)	UNRTD	Pugh, J. (C)	1559&	Westcott, A. (R)	1634\$
Lane, L. (O)	1348%	Quintero, R. (C, H)	1740\$	Westerline, P. (C)	1674\$
Lawless, K. (H)	UNRTD	Ramirez, A. (O)	1627*	Wheeler, J. (H)	1599&
Lawry, D. (C)	1452&	Ranelletti, J. (L)	1590%	Whitt, G. (R)	1679%
Lechtaler, C. (D)	1483\$	Rapaport, D. (O)	1886	Williams, D. (F)	+
Lee, L. (H)	UNRTD	Reed, T. (M)	1631\$	Willows, J. (L)	1636\$
Lee, R. (O)	1592%	Rivera, M. (C)	1402	Wright, H. (R)	1550/
Leimbach, S. (C)	UNRTD	Rouast, G. (L)	1739\$	Wong, H. (O)	UNRTD
Lim, R. (C)	1591&	Rubsamen, E. (O)	1548%		
Long, J. (C)	1798&	Saina, J. (O)	1890\$		

+ indicates names came in too late to rate on this list.



Mrs. Tony N. (Margret) Sloane cuts the cake at the Oakland Chess Club's Christmas party on 13 December. Club officers Raymond Ng (l.) and Richard Lee (r.) look on reverently, and Young Dennis Fung is "tickled pink" at the idea of eating the delicious cake. (Complete coverage in "News" section supra.)—Photography by Martin E. Morrison, Seacatch Voice Editor.

*
NEXT REGULAR CCCA GENERAL MEMBERSHIP MEETING: Friday, 4 April, 8:00 p.m., Lincoln Elementary School, 225 Eleventh Street, Oakland (the Oakland Chess Club's quarters). All CCCA members, i.e., members of any of the sixteen affiliated clubs listed on p. 4 supra, may attend and will have a vote. The meeting is also "open to nonmembers, who shall have the same rights of debate as members."

NEXT USCF TOURNAMENTS OF CCCA AFFILIATES: 3rd Annual Concord Open Chess Championships, 16-18 February (Concord CC); 5th Visalia Amateur Chess 95 30 March (Callers of the Seacatch CC); 2nd Annual Four-men

Editors
Central California
Chess Association
c/o Post Office Box 1682
Oakland, California 94604
Telephone: (415) 636-1892
THIRD-CLASS MAIL
RETURN REQUESTED

ADDRESSES; PLEASE NOTIFY THE EDITORS AS SOON AS POSSIBLE OF ANY CHANGE IN YOUR ADDRESS OR TELEPHONE NUMBER.

NEXT AFFILIATE ASSESSMENT DUE: 5 February and are delinquent thereafter; club officers responsible should send 20¢ per club member, along with the full names and addresses (with ZIP codes) of all members to the CCCA Treasurer (address on p. 3 supra).
USCF MEMBERSHIPS AT 20% DISCOUNT: \$8 (adult) and \$4 (under 21) per annum—regularly \$10 and \$5, respectively—for new or renewal membership, if sent to the CCCA Treasurer (address on p. 3 supra). Benefits include a Chess life subscription and eligibility for a USCF rating.
CHESS CLOCKS—LOWEST PRICE IN US; NO WAITING MONTHS FOR OVERSEAS DELIVERY: BHB Extra, brown plastic case, 6" x 3" x 1 1/2"; 50¢ per game—tee from manufacturer; "the world standard for durable quality and durability at a moderate price" (USCF); only \$12-50. Immediate delivery from the CCCA Clock Committee: the CCCA Treasurer (address and telephone number on p. 3 supra) and Jerry Friedman (Hotel Claridge, No. 535, 634 15th St., Oakland 94612-7836-4525/).