

90 Chess Clubs
And Organizations

CIRCULATION
508 Chess Players

84 Chess Publications
and Libraries

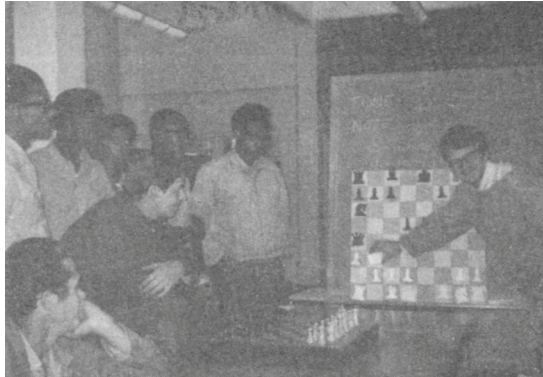
THE CENTRAL CALIFORNIA CHESS VOICE



CENTRAL CALIFORNIA'S CHESS MAGAZINE
and
OFFICIAL ORGAN
of the
CENTRAL CALIFORNIA CHESS ASSOCIATION
(An Authorized Affiliate
of the United States Chess Federation)

MARTIN E. MORRISON
Editors
. ELWIN C. MEYERS

December 1970-January 1971
Whole No. 18



CCCA "MASTER-AT-LARGE" JUDE F. ACERS demonstrates a position to members of affiliate Deuel Vocational Institution Chess Interest Group during a lecture at the Institution on Saturday, 7 November. The lecture was followed by a simultaneous exhibition on 28 boards, in which Giles Medlock and Steven Bodenhamer drew the master, and USCF Expert Charles Comstock, Group officer, won (all by adjudication). Mr. Acers won against Mr. Comstock in a blitz finish afterwards. Mr. Acers has just completed a nationwide exhibition tour at prisons, which will be written up in Sports Illustrated magazine and the New York Times. The CCCA and Mr. Acers are cooperating in the production of a Simultaneous Exhibition Tour for CCCA Affiliates. The master will kick off the tour at the Alameda Chess Club on Monday, 7 December, and will then appear at the Berkeley Chess Club on Friday, 15 January (for details see "Affiliate News" in this issue). Other affiliates are encouraged to take advantage of this special opportunity for an unusual club event (see page 4 of this issue for full details). Pictured in the photograph above are (l. to r.): Tom Henley (seated), Thomas Miller, Gregory Pruitt (standing), Ronald Todd, John Woldridge, Thomas Banks, Harold L. Chappel, and Jude F. Acers. (Photograph courtesy of Richard R. Shorman, CCCA Publicity Director.)

Editors
Central California
Chess Association
Post Office Box 1622
Oakland, California 94604
Telephone: (415) 582-1973

Send change of address notices, undeliverable copies, orders for subscriptions, and other mail items to the magazine's mailing address above. POSTMASTER: SEND P. O. D. FORM 3579 TO THE MAGAZINE'S MAILING ADDRESS ABOVE.

Chess Voice is published bimonthly. EVERY MEMBER OF THE CCCA, I.E., EVERY PERSON WHO IS CERTIFIED BY THE APPROPRIATE OFFICER OF A CHESS CLUB OR ORGANIZATION AFFILIATED TO THE CCCA (listed on page 15) TO BE A MEMBER OR OFFICER OF THE AFFILIATE, receives mailed to his home a Chess Voice subscription, paid for in connexion with the payment of the affiliate's CCCA assessments in a distinct, voluntary, and independent act on the part of each individual member, the relation of subscriber being clearly understood and fully agreed to. Known office of publication (not the magazine's mailing address): Campus Bancroft Building, Room 206, 2440 Bancroft Way, Berkeley, California 94704. Second-class postage paid at Berkeley, California.

The opinions expressed in Chess Voice are those of the Editors or of the respective contributors. They do not necessarily constitute an official policy of the CCCA or any of its affiliates.

NONMEMBER SUBSCRIPTIONS: \$2.00 per annum.

ADVERTISEMENTS: 5¢ per word per issue on any subject (classified advertisements), \$5.00 per eighth page per issue, \$20.00 per insert per issue (this cost is more than one cent cheaper per page for mailing tournament circulars, etc., than postage costs alone).

CCCA OFFICERS AND OFFICIALS

| | |
|---------------------------------------------|---------------------|
| CHAIRMAN | MARTIN E. MORRISON |
| Post Office Box 1622, Oakland, CA 94604 | 582-1973 |
| SECRETARY | SALEH MUJAHED |
| Post Office Box 1622, Oakland, CA 94604 | (582-1973) |
| TREASURER | LEONARD F. TROTTIER |
| 5315 MacDonald Avenue, El Cerrito, CA 94530 | 233-1595 |
| LEAGUE DIRECTORS | HAROLD L. BARNETT |
| 677 Caliente Drive, Livermore, CA 94550 | 447-4588 |
| 3517 Jordan Road, Oakland, CA 94619 | FRANK V. LEFFMAN |
| EDITORS | 531-4804 |
| Post Office Box 1622, Oakland, CA 94604 | MARTIN E. MORRISON |
| | 582-1973 |
| Post Office Box 1622, Oakland, CA 94604 | ELWIN C. MEYERS |
| | (582-1973) |
| PUBLICITY DIRECTOR | RICHARD R. SHORMAN |
| | 782-5029 |

Area Vice Chairmen: Frederick J. Ulrich, Sergius von Oettingen (Sacramento-Stockton Area), Lee Henderson (North Bay Area), Jerome Friedman (Central Bay Area), William T. Adams (South Bay Area), Chris A. Fotias (Central Valley Area).

CCCA Championship Administrator: Hans Poschmann.

Standing Committees. Clock: Leonard F. Trottier, Chairman, John R. Moore, Jr., Martin E. Morrison. Tournament and Club Relations: Martin E. Morrison, Chairman, Elwin C. Meyers (Standing Tournament Subcommittee); Harold L. Barnett, Everett L. McNally (Club Coordinator).

CSCF Directors: Martin E. Morrison (At-large, Northern California; Member, Standing State Tournament Calendar and Standing Tournament Committee, Northern Section), Gunnar H. Rasmussen (Redwood Empire Area; Chairman, Board of Directors).

USCF Directors: William T. Adams, William Kennedy, Elwin C. Meyers, Martin E. Morrison (Member, Tournament Director Certification Committee, Chairman, Tournament Directors Guidebook Subcommittee; National Chairman, Nominating Committee), E. H. Mueller, Frank M. Olvera, Sr., Robert L. Oyler, Gunnar H. Rasmussen, Sergius von Oettingen.

Members should feel free to contact their officers and officials regarding any aspect of chess business. They will be happy to serve you. Of course, additional help is always needed and welcomed. Offer your help to your CCCA.

***THE COMPLETE OFFICIAL STATE TOURNAMENT CALENDAR
FOR NORTHERN AND CENTRAL CALIFORNIA
OFFICIALLY SANCTIONED BY THE CALIFORNIA STATE CHESS FEDERATION***

Chess Voice is designated to publish "The Complete Official State Tournament Calendar for Northern and Central California, Officially Sanctioned by the California State Chess Federation" and has charge of collecting data for the calendar, "to avoid competition, publicize, and promote attendance." TOURNAMENT ORGANIZERS SHOULD SUBMIT TO THE EDITORS AS SOON AS POSSIBLE TENTATIVE OR DEFINITE TOURNAMENT DATES FOR INCLUSION IN THE OFFICIAL STATE TOURNAMENT CALENDAR. We cannot be responsible for including tournaments of which we have not been notified. Chess Voice is also designated to "coordinate tournament dates." In carrying out this function, the Editors, in case of date conflicts, will contact the organizers involved in an effort to find a resolution agreeable to all parties. In general, precedence will be given to established annual tournaments and those of which we were notified first. USCF tournaments of the CCCA and its affiliates are capitalized. At these tournaments CCCA California State Chess Championship Qualifying Points will be awarded. To obtain them, a player must produce an unexpired CSCF membership card or join the CSCF upon registration at the tournament.

*

| | | | |
|------------------------|--------------------------------------------------------------------------------------------------------|-------------------|---------------|
| EARLY DEC. | OPEN TOURNEY | USCF | TRACY |
| 12-13 DEC. | 4TH ANN. SAN FRANCISCO OPEN CHESS T. | USCF | SAN FRANCISCO |
| 19-20 DEC. | OAKLAND CC'S 5TH ANN. SAN FRANCISCO BAY AREA AMATEUR OPEN CHESS CHAMPIONSHIP T. | USCF | OAKLAND |
| JAN. | WEEKEND TOURNAMENT | USCF | DAVIS |
| Jan. or Feb. | 1970 CFNC Championship, CFNC/USCF Open Qualifier, and Jr. Championship Playoffs | CFNC (& USCF) | ? |
| 2 JAN. | CCCA'S REGIONAL 1-DAY ROUND ROBIN CHESS T. | USCF | WALNUT CREEK |
| 9-10, 16-17? | Invitational Double Weekend Tournament | Unr. | ? |
| Jan. | | | |
| 22 JAN. & 5 FOL. FRIS. | MASTER/EXPERT OPEN (no Qual. Pts.) | USCF | BERKELEY |
| 29 JAN. & 5 FOL. FRIS. | AMATEUR OPEN (no Qual. Pts.) | USCF & UNR. | BERKELEY |
| 12-14 FEB. | CCCA'S REGIONAL GOLDEN BEAR PREMIER CHAMPIONSHIP | USCF, CSCF | BERKELEY |
| 13-14 FEB. | CCCA'S REGIONAL GOLDEN BEAR CLASS CHAMPIONSHIPS | USCF | BERKELEY |
| 20-22 FEB. | TOURNAMENT | USCF | SAN FRANCISCO |
| 7-12 Mar. | National Open | USCF | Sparks |
| 12 MAR. | OAKLAND CC'S 4TH ANN. 4-MAN SECTIONAL CHESS T. | USCF or CFNC | OAKLAND |
| 19 MAR. & 6 FOL. FRIS. | BERKELEY CC OPEN CHAMPIONSHIP (no Qual. Pts.) | USCF & UNR. | BERKELEY |
| 27-28 MAR. | THE 1971 GRAND PRIX CLASS CHAMPIONSHIPS (USCF REGION VIII) | USCF, CSCF & USCF | FRESNO |
| 2-4 APR. | 7TH ANN. PRE-EASTER VISALIA AMATEUR OPEN CHESS T. | USCF | VISALIA |
| late Apr. | 5th Ann. Peninsula Open | CFNC (& USCF) | Sunnyvale |
| MAY | CCCA'S REGIONAL USCF CLASS CHESS T. AT ? | USCF | ? |
| MAY | ?SACRAMENTO CITY CHAMPIONSHIP | USCF | SACRAMENTO |
| 22 MAY | ?DVI'S USCF SEMI-OPEN/INVITATIONAL T. | USCF | TRACY |
| JE. | 7TH ANN. MONTEREY INT. OPEN CHESS T. | USCF | MONTEREY |
| EARLY JE. | LIVERMORE OPEN | USCF | LIVERMORE |
| 3-5 JULY | 8TH ANN. ARTHUR B. STAMER MEMORIAL T. | USCF | SAN FRANCISCO |
| 4 Jul. | 5th Open Air Chess Festival | Unr. | San Bruno |
| 17-18 JUL.? | CCCA'S REGIONAL CLASS CHESS T. AT ? | USCF | ? |
| 31 JUL.- 1 AUG.? | CCCA'S 3RD ANN. ADULT & JR. USCF REGIONAL CHESS CHAMPIONSHIP OF CENTRAL CALIFORNIA (triple Qual. Pts.) | USCF | ? |
| Aug. | Oakland CC's 8th Ann. Summer T. | CFNC | Oakland |
| Aug. | 3rd Ann. Chabot Open Chess Championship T. | CFNC (& USCF) | Mt. Eden |
| 15-28 Aug.? | US Open Chess Championship | USCF | Ventura |
| 4-6 Sept. | Calif. Open | USCF & CSCF | Monterey? |
| 11-12 Sept.? | CCCA'S REGIONAL USCF CLASS CHESS T. AT ? | USCF | ? |
| 19 Sept. | 9th Ann. Scholarship Chess Festival | Unr. | Hayward |

(Continued on page 6.)

IMPORTANT NOTICE TO AFFILIATES: ACERS EXHIBITION TOUR FOR CCCA

USCF Master Jude F. Acers is perhaps the fastest-rising chess player in the United States today. So illustrious has his career become that feature stories have appeared in Sports Illustrated and the New York Times concerning him and his US prison tour. Many highly-placed players have predicted his advancement to the International Master title in the near future.

Mr. Acers, for all his national and potential international involvement, has always been a fervent promoter of chess on the local level, and especially of the CCCA. Mr. Acers has again come to our aid by agreeing to give an exclusive Exhibition Tour for CCCA affiliates at ridiculously generous terms. No affiliate must guarantee any specific number of boards to play him in the simultaneouses, nor must an affiliate guarantee any fee for his appearance. Mr. Acers is simply out to promote local chess. If an affiliate is in a financial position to help offset Mr. Acers's expenses in appearing, a reasonable fee would be appreciated. A lecture may precede the exhibition, if desired.

Every affiliate will be expected to contact CCCA Chairman Martin E. Morrison (address and telephone number on page 2 of this issue) before the end of the year to set a day, time, and place for that affiliate's exhibition. Mr. Acers has set aside the period of 15 January to 28 February for these exhibitions.

We expect to hear one way or the other from each affiliate, which has only to set the date. We urge all affiliates to take advantage of this unusual offer and unique opportunity for promotion of their club.

SOME CHRISTMAS GIFT IDEAS FOR CHESS PLAYERS

We are often asked at this time of year what gifts in the chess line we recommend. All of the following items we feel would be well received.

(1) CHESS CLOCKS. Every serious player without a clock has always dreamed of owning one. The CCCA has made ownership of a clock financially feasible by selling clocks at almost 25% less than the chief US merchandiser, although they are the same high-quality clocks and are guaranteed for two years. For local outlets, see page 16 of this issue. \$12.50.

(2) THE 1971 INTERNATIONAL CHESS CALENDAR. This is a new item on the market, and must be called the most unusual piece of chess merchandise produced this year. Each month covers two pages of sturdy 8½ x 11 inch paper spiral-bound across the middle. The top half consists of a large photograph, a different one for each month, depicting current and former chess "greats," together with a short biography. The bottom half is a calendar for the month, each date being accompanied by a major historical chess event or birthday of a well-known player. The amount of work put into the Calendar by its creator, Professor Winfield P. Scott, of Rhode Island, is phenomenal. A perfect "stocking-filler." \$1.50 from CHEC, Chess Enterprises Consolidated, 56 Observatory Avenue, North Providence, RI 02911.

(3) MAGAZINE SUBSCRIPTIONS. A subscription to a fine chess magazine would be a lasting gift. Chess Life & Review, the publication of the United States Chess Federation, and The California Chess Reporter, the publication of the California State Chess Federation, would both make excellent gifts. Each comes free with membership in the respective organization. (See page 16 of this issue for details on memberships.) Two other unusually good national magazines may also be mentioned. Chess Digest Magazine is the monthly magazine put out by the prolific Texan master Kenneth R. Smith. Contents include notes on books, opening, middle, and end game analyses, annotated games, historical data and current events in chess, and various columns, including one on chess laws and tournament direction by Chess Voice Editor Martin E. Morrison. \$8.50 per annum from Kenneth R. Smith, P. O. Box 21225, Dallas, TX 75211. Magazine Chess Scribe, another monthly, directs itself toward the developing player and views on the current chess scene. The magazine's editor, James A. DiDomenico, of Providence, Rhode Island, is dedicated to the improvement of American chess, and delves into the features of present-day chess in the United States which help and hinder the player's progress. An unusually penetrating and provocative magazine; a "must" for those players interested in the future of American chess. \$6.00 per annum from James A. DiDomenico, 20 Simmons Street, Providence, RI 02909.

(4) CHESS SETS, BOARDS, BOOKS, ETC. A wealth of material on every aspect of chess is contained in catalogues put out by the United States Chess Federation (20 pp., illustrated, available on request from the USCF, 479 Broadway, Newburgh, NY 12550) and from Chess Digest Magazine (address under 3 above). For these items you should plan to shop early by mail. It would be wise to allow at least three weeks for delivery.

The CCCA will be happy to answer any specific questions you may have about gift items. You may write or telephone this magazine as listed on page 2.

ANOTHER CCCA EXCLUSIVE: ANNOUNCING THE CHESS VOICE BEST GAMES CONTEST

Have a tournament game you're particularly proud of? Let the world know about it by submitting it to our Best Games Contest. Every two months a Best Game will be chosen for each of the following rating groups: Master/Expert, Class A, Class B, Classes C/D/E & Unrated. All four Best Games will be published in Chess Voice. ONE OF THEM, CHOSEN AT RANDOM, WILL RECEIVE THE COMPLETE ANALYSIS AND COMMENTS OF AN INTERNATIONAL GRANDMASTER, AT THE EXPENSE OF CHESS VOICE. The original copy of the analysis will be sent to the winning contestant as a specially meaningful and unusual prize.

Please observe the following rules in your submissions:

(1) The submitted game scores should be legible and correct. Include, clearly typed or printed, your name, your opponent's name, the name of the CCCA affiliate (club) of which you are a member, the date of the game, and the correct name of the tournament in which the game was played. Indicate your USCF rating and your opponent's USCF rating, if you know it, at the time the game was played. If you like, you may attach your own notes on the game.

(2) This contest is limited to current CCCA members, i.e., members of a CCCA affiliate (see page 15 of this issue).

(3) This contest is limited to games played in an event sponsored by the CCCA or one of its affiliates, e.g., club tournaments, league matches, or weekend tournaments (particularly those capitalized in the "Tournament Calendar" on page 3 of this issue).

(4) This contest is limited to games played within the six months preceding the closing date of each bimonthly competition. The first bimonthly period ends 15 January 1971; thus, games played before 15 July 1970 are not eligible. Best Games for this period will be published in the April-May Chess Voice. The next bimonthly period ends 15 March 1971 for publication in the June-July Chess Voice, etc.

(5) Send copies of your game scores. Entries will not be returned to contestants.

(6) Limit your entries in each bimonthly period to two games. If more are submitted, two will be chosen at random for the contest.

(7) Send your entries to John A. Wallan, Best Games Contest Judge, P. O. Box 2002, Oakland, CA 94604. The decision of the Judge is final.

SURVEY OF CHESS ORGANIZATIONS

Many chessplayers have become confused by the large collection of four-letter groups that tackle the difficult assignment of organizing chess. We shall attempt to dispel this confusion by identifying and describing below the chess organizations of most concern to chess players in this area.

FIDE (FEDERATION INTERNATIONALE DES ÉCHECS, translated WORLD CHESS FEDERATION) is the international chess organization to which practically all national federations are affiliated, including the USCF. It is the ultimate arbiter of the chess laws and oversees international tournaments, especially the World Championship.

USCF (UNITED STATES CHESS FEDERATION) is the national chess organization with a current membership approaching 20,000. It publishes Chess Life & Review monthly, provides national ratings, and organizes national tournaments, such as the US Open and Championship. For membership information, see page 16 of this issue.

CSCF (CALIFORNIA STATE CHESS FEDERATION) is the state chess organization. It publishes The California Chess Reporter bimonthly and organizes state-wide tournaments, such as the California Open. For membership information, see page 16 of this issue.

CCCA (CENTRAL CALIFORNIA CHESS ASSOCIATION) is the regional chess organization, which covers roughly the area from Sacramento to Bakersfield. It publishes The Central California Chess Voice (Chess Voice for short) bimonthly and conducts many regional tournaments, usually in cooperation with local affiliates, and a team-match league. The CCCA is particularly dedicated to increasing USCF activity in this area. Membership is automatically conferred on chess players who belong to one of the CCCA's affiliates, which now number almost 40 (see page 15 of this issue).

CFNC (CHESS FRIENDS OF NORTHERN CALIFORNIA) is a local organization with most of its activity centered on the San Francisco Peninsula. It publishes Chess in Action quarterly, conducts a league, and holds some weekend tournaments. Membership costs \$3.00 per annum.

NEWS

Piedmont Hills High School Team Finds Path to Victory at Pathfinder

The First Pathfinder Team Tournament, sponsored by the Fremont Chess Club in cooperation with the CCCA, was held on Saturday, 24 October at the newly finished Fremont Community Center. Five four-man teams participated in a round robin, which saw the Piedmont Hills High School team, of San Jose, score a decisive win with a 13½-2½ score. Following were the Hayward Chess Club's team (10½-5½), the Livermore Chess Club's A team (10½-5½), the Fremont Chess Club's team (5-11), and the Livermore Chess Club's B team (3½-12½). The Piedmont Hills team carried off a trophy and clock for their fine result. Individual awards of \$20.00 chessboards were claimed by Richard Gordon (1st board), Dennis Myers (2nd board), and Donald Gordon (4th board). The third board prize was split by Lt. Col. George W. Roust and Michael Sullivan (\$10.00 cash each). The two Gordons are to be commended for their perfect 4-0 scores; the other winners were each held to one draw.

To Hans Poschmann, President of the Fremont Chess Club, must go our thanks for bringing off an unusual event of a form not often seen in the United States. We hope that Mr. Poschmann will continue to hold a variety of such chess events for the chess players of Central California.

*

Berkeley CC to hold USCF and Unrated Tournaments for Masters, Amateurs

Beginning in January, the Berkeley Chess Club will hold a USCF-rated, four-round Swiss System tournament reserved for Masters and Experts only. A unique feature of the tournament will be its slow time limit, 35/1.75 (clocks start at 7:30 p.m. and run to 11:00 p.m.). Adjournments will be played off on another night. Rounds will be held on Friday nights, beginning 15 January. Registration will be taken before 7:30 p.m. on Friday, 15 January, and entrance is free for Berkeley Chess Club members, \$1.50 for nonmembers. The winner will receive the title of Master/Expert Open Champion and a trophy.

The Amateur Open will be held in two sections, USCF-rated and unrated. Both sections will be in the form of a five-round Swiss System at a rate of 45/1½ (clocks start at 7:30 p.m. and run to 10:30 p.m.). Rounds will be held on Friday nights, beginning 22 January, with registration before 7:30 p.m. that night. There is no entry fee for club members, \$1.00 for nonmembers. Prizes will be awarded to the First A, B, and C/D/E finishers.

The club meets every Friday evening (except holidays) from 7:00 to 11:30 p.m. in the Palm Room of the Berkeley Central YMCA, 2001 Allston Way, Berkeley. Visitors welcome.

*

Pardini Scores at Bumbler B

By WILLIAM KENNEDY, Secretary, Monterey Peninsula Chess Club

Charles Pardini, of San Francisco, with a perfect score of 5-0, won the annual "Fight of the Bumbler B" Chess Tournament, held at the Casa Alvarado Chess Center in Monterey, 17 and 18 October. Richard Bustamante, a 17-year-old chess expert from Salinas, took second place with a score of 4½-½. In addition to the cash prize for second place he also received a trophy as the best junior under 18 years. Duncan B. Campbell, of Grinda; Robert W. Howard, of Mountain View; and David Tykinski, of Minneapolis, split third-place money. Bruce Dickinson, of Monterey, won a prize for the "Best Monterey Peninsula Chess Club" player. David Sewell, 14-year-old Salinas Chess Champion, received a trophy as the best junior under 16 years.

Heidi Lavitzke, of Carmel, was named the "Queen B" and received a prize as the best woman player in the tournament. She also received a prize as the best Class E player. Heidi is 13 years old. Other prizes and awards: Arthur Mankin, of Santa Barbara (Best Class B), George Eding, of Monterey (Best Class C), John Anderson, of Carmel Valley (Best Class D). Gary Clark, of Seaside; Gary Field, of Lompoc; George Oakes, of Salinas; and Ron Atkinson, of Carmel, won special awards.

Forty-two players participated in the tournament, sponsored by the Monterey Peninsula Chess Club. Theodore Yudakofski directed this USCF-rated event.

THE COMPLETE OFFICIAL STATE TOURNAMENT CALENDAR
(Continued from page 3.)

| | | | |
|-------------|------------------------------------------------------------------------------------------------------------------------|---------------|---------------|
| late Sept. | 6th Ann. 1971 Sunnyvale Open Chess Championship CFNC (& Sunnyvale T. & 1971 Santa Clara Open Jr. Chess Championship T. | USCF | SACRAMENTO |
| 1-3 OCT.? | CEN. CALIF. OPEN | USCF | SAN FRANCISCO |
| 9-10 OCT.? | NO. CALIF. CHAMPIONSHIP | CFNC (& USCF) | Redwood City |
| 16-17 Oct.? | Redwood City Open | USCF | MONTEREY |
| 16-17 OCT. | FIGHT OF THE BUMBLER B (no Qual. Pts.) | USCF | Santa Monica |
| 25-28 Nov. | American Open | | |

CCCA 1970-71 LEAGUE NETS RECORD 38 TEAMS

CCCA 1970-71 League play began on a hopefully auspicious Friday, 13 November, with a record 38 teams, a 41% increase over last year's 27 teams. As in last year's League, play will be conducted in two categories, USCF (all-rated) and Independent (unrated), between teams of four-men (but Captains may agree to use an augmented team). This year play will first take place in four-team double Round Robin sections with playoffs to be held in May. The lineup of this year's teams with their Captains is as follows:

USCF Category. Northern Division: Berkeley CC, Norman Rosen; Oakland CC Roger K. Alexander; Marin CC, Tilden Hansen. Eastern Division: Hayward CC, Edward Silva; Concord CC, William Noble, Jr.; Deuel Vocational Institution Chess Interest Group, Harold L. Chappel; Livermore CC, Lt. Col. George W. Roust. Western Division: Berkeley CC, Michael Donald; Marin CC, William Parafitt; Mechanics' Institute Chess Club, Raymond J. Conway; Oakland CC, Craig N. Barnes. Southern Division: Chabot CC, James Hutchinson; Livermore CC, Kenneth C. Giallanza; Fremont CC, Hans Poschmann; San Jose CC, Flyn L. Penoyer. Monterey Bay Area Division: to be announced. Fresno Area Division: to be announced.

Independent Category. Northern Division: Mill Valley CC, Leroy A. Post; San Quentin CC, Sgt. T. R. Plant; Santa Rosa CC, Lee Henderson; Vallejo CC, Gunnar H. Rasmussen. Eastern Division: Concord CC, John R. Moore, Jr.; Martinez CC, John E. Wernes; Orinda CC, Duncan D. Campbell; Walnut Creek CC, Saleh Mujahed. Western Division: Alameda CC, Marvin Smitherman; Berkeley CC, R. Carl Shiflett; Richmond CC, Peter M. Brown, Jr. Southern Division: Berkeley CC, Pete Delgado; Fremont CC, Hans Poschmann; Livermore CC, Glenn Hage; Oakland, Jerry Gerhardt.

Captains and team members should note Rule IIIA: "All participants on a team must be members of the CCCA from the affiliate from which the team originates, i.e., HE MUST BE ON THE BIMONTHLY ASSESSMENT LIST THE CLUB SENDS TO THE CCCA.

The CCCA's sincere thanks for a job well done must go to League Director, Harold L. Barnett, and to Wesley A. Nelson, who assisted him, for their superb work in making, typing, and mailing the pairings for so large a League.—EDS./

*

We have been asked to publish the fact that in the CCCA's 1970 USCF Summer League, Division II, the Oakland B team won its division over the Concord team by virtue of tie-breaks.

NEWS NOTES

THE 1970-71 NORTH AMERICAN INTERCOLLEGIATE CHESS CHAMPIONSHIP, held annually under the auspices of the Intercollegiate Chess League of America, will be held from 28-30 December on the campus of Northwestern University. Participation is open to four-man teams from American colleges or universities. A guaranteed \$800 minimum prize fund will be at stake.

AMONG THE USCF NATIONAL COMMITTEE APPOINTMENTS arising from the 1970 Boston business meetings we find CCCA Chairman and USCF Director Martin E. Morrison. Mr. Morrison will be serving as National Chairman of the Nominating Committee for the 1971 elections and as a member of the newly created Tournament Director Certification Committee, which will henceforth be responsible for matters pertaining to the chess laws and tournament direction and for the implementation of a program to certify tournament directors for USCF tournaments. Mr. Morrison will also serve as Chairman of the Tournament Direction Guidebook Subcommittee, which is charged with preparation of a tournament guidebook to be published by the USCF. Suggestions from readers are encouraged by Mr. Morrison.

INTERNATIONAL GRANDMASTER WALTER S. BROWNE will be in this area until Christmas-time and is interested in giving simultaneous exhibitions. A guarantee of \$75 per appearance has been requested by the grandmaster. Any club interested in having Mr. Browne for an exhibition should immediately contact CCCA Chairman Martin E. Morrison (address and telephone number on page 2 of this issue).

A NEW PUBLICATION, primarily dedicated to new ideas in chess, has appeared. Entitled Chess Ultimates, the magazine is published by Thurgood Row, 12039 Garden-gate Drive, St. Louis, MO 63141, from whom further information and a sample copy can be obtained.

THE NORTHWEST INTERZONAL HIGH SCHOOL TEAM TOURNAMENT is to be held 6-7 February at Portland State College. Teams of five players will compete in a five-round Swiss System for \$800 expense money to the National High School Championship and five trophies. Further information can be obtained from Pat Maloney, Rt. 1, Box 50, Cornelius, OR 97113.

GAMES COLUMN

By RICHARD R. SHORMAN, Chess Voice Games Columnist (CCCA Publicity Director)

I have received the following endgame study from USCF Master Erik D. Osbun, of San Jose, who thinks that its publication in Chess Voice "will be especially instructive for the average player."

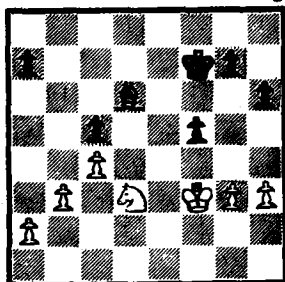


DIAGRAM #1

43 NxP, P-QR4; 44 N-R6, B-K4; 45 P-B6, K-K3; and Black wins.

I thought that if White were to keep the position as closed as possible, he could hope to hold his own with knight vs. bishop. Against this perhaps-best, do-nothing policy, I prepared the following model variation: 41 P-R3, P-QR4; 42 K-B2 (not 42 P-QN4?, BxP; 43 PxP, BxQNP or 43 P-B5, PxP; and Black wins), K-K3; 43 K-B3, P-N4; 44 K-B2, P-R4; 45 K-B3, P-N5ch; 46 K-N2 (if 46 PxP, BfxPch allows the Black king to penetrate via his KB4 and K5), K-B3; 47 P-R4, P-B5! (it is only in this position with White's king on KN2 that this break is effective); 48 PxP, K-B4; 49 P-N4 (the only defense is now counterattack), BfxP; 50 P-B5, B-N1! (50... PxP only draws); 51 PxP, P-B5!; and Black wins (#2).

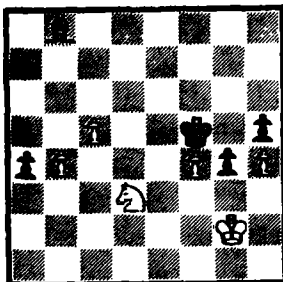


DIAGRAM #2

Essential Knowledge, by Juri Averbach, p. 118): "a) The King gets as near as possible to the opponent's Pawn lines; b) entry squares are created in his camp; c) the Bishop strives to limit the activity of the opponent's pieces; forced to defend the approaches to their camp, these pieces become less active and are gradually thrust back; d) the King breaks into the opponent's position and secures a decisive material advantage."

48 N-Q3, B-K2; 49 N-K5, B-Q3; 50 N-Q3, P-N5 (the right moment); 51 PxP, PxP; 52 N-B4ch, K-B3 (of course not 52...BxN?, when White would draw. If Black's passed pawn were a KR4, ...BxN would win.); 53 N-N2, B-R7!; 54 K-Q5, B-N8; 55 K-K4, K-N4; 56 K-K5 (practically forced), P-N6; 57 K-KR4, K-N5; 58 N-B4, B-Q5; 59 N-N2, B-B7; 60 N-B4, B-K8; 61 N-N2, B-Q7 (#3) (zugzwang. This position White had not foreseen and pondered 45 minutes over his reply. This was to cost him the game.); 62 P-R3 (The only chance is to give up a pawn. If 62 K-Q3, K-R6 wins.), B-B6; 63 P-N4, BfxP; 64 PxP, PxP; 65 P-B5, P-N6; 66 K-Q3, P-N7? (A hasty move which should have thrown away the win. Correct is 66...K-B4!; 67 P-B6, K-K3; 68 N-R4 /as in the game/, B-N4!; 69 N-N2, K-Q3; 70 K-B3, KxP; 71 KxP, K-Q4; 72 K-B2, K-K5; 73 K-Q1, K-B6; 74 N-K1ch, K-B7; and Black wins.); 67 K-B2, K-B4; 68 N-R4, K-K3; 69 P-B6, B-N4 (The bishop pawn cannot be approached.); 70 N-N2, B-B3; 71 N-K3, B-K4; WHITE FORFEITS ON TIME. (#4).

Actually my opponent made a gesture of resignation considering his precarious position on the board and the clock. A few moments later we found 72 K-N1!, B-Q5; 73 N-B5!!, P-N7 (73...KxN?; 74 P-B7 wins); 74 NxBch, K-Q3; 75 N-B3, draw; or 72

James T. Iwashita, USCF Expert (White) vs. Erik D. Osbun, USCF Master (Black), both of San Jose. San Jose Chess Club Championship, 1970.

Winning this adjourned position (#1) after Black's fortieth move enabled me to tie for first in the Club Championship with James T. Iwashita and William T. Adams.

Black has a few advantages: a healthy king-side pawn majority, two pawns holding three on the queen-side, and bishop vs. knight. However, my adjournment problem was great. I must guess White's sealed move and also work out best play for both sides. My first impressions were: if 41 N-B4?, BxN, and regardless which way White recaptures, Black wins the king and pawn endgame; and if 41 P-QN4?, PxP; 42 P-B5, B-B2;

A sample of what may follow is 52 P-N5, P-R6; 53 N-N4, BxP; 54 P-N6, K-K3; 55 P-N7, K-Q2; 56 P-B6ch, K-B2; 57 N-Q5ch, KxP; 58 NxB, KxP; and although the knight makes it back to the QRP by 59 N-Q3, White must still lose.

However, my opponent chose another perhaps equally good plan and remarked upon resumption that he thought the position to be a draw. 41 P-KN4, PxPch (the only move to play for a win); 42 KxP (best: White sees that now a king and pawn ending will be drawn), P-QR4 (again, the only move that might win); 43 K-B5, P-N3ch; 44 K-K4, K-K3; 45 N-B2, P-N4 (the majority begins to rule); 46 N-N4, P-R4; 47 N-B2, B-B1 (the key manoeuvre; the bishop gains a move on the knight).

It is valuable for all readers below expert strength to recite at this point the stages of the plan typical of these positions (from Chess Endings,

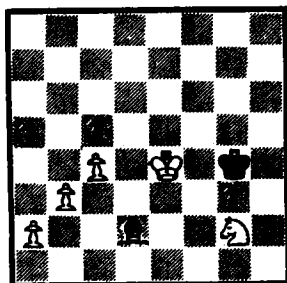


DIAGRAM #3

K-N1, B-B5; 73 N-N2, B-B8; 74 N-R4, B-N4; 75 N-N2, K-Q3 (a try); 76 KxP, KxP; 77 K-B2, K-Q4; 78 K-Q3, K-K4; 79 K-K2, K-K5; 80 K-B1, draw.

This attractive problem draw was possible only because Black gave away on his 86th turn the hard-won tempo gained over many moves by his bishop vs. the knight. Nonetheless, a very instructive endgame.

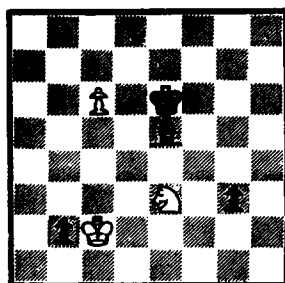


DIAGRAM #4

LATEST OFFICIAL USCF RATINGS OF CCCA MEMBERS

The following are the official USCF ratings of CCCA members through the "Rating Supplement, Fall 1970," published in the September Chess Life & Review. Almost all CCCA members through the 5 October assessment period with USCF ratings are listed. Please notify the Editors of any additions or corrections.

MASTER: 2200-2399; EXPERT 2000-2199; CLASS A: 1800-1999; CLASS B: 1600-1799; CLASS C: 1400-1599; CLASS D: 1200-1399; CLASS E: below 1200.

* indicates provisional ratings based on 10 to 18 games. Such ratings are less reliable than established ratings. # indicates ratings based on 4 to 9 games. Such ratings are highly unreliable. Players who have played less than 4 games are not listed.

Total number of CCCA members with USCF ratings: 139 (35%).

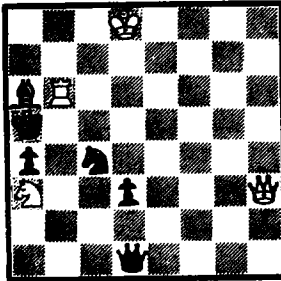
ANTIOCH CC (6): R Guzman 1510*; H Lewis 1675*; F Olvera, Sr. 1536; R Oyer 1670; F Ulrich 1636; C Vail 1602. BECHTEL CC (4): W Allen 1986; T Cahill 1529; A Hanak 2087; A Saguisag 1828. BERKELEY CC (13): G Baum 1662; S Cross 2019; S Dinerstein 1601; W Fleissner 1710; D Gosiewski 1657; T Leschander 50#; D Levine 1562*; M Maloney 1550#; E Meyers 1693; L Stansby 1779#; R Uomini 1741; C Yaffe 1709; E Yeung 1524. COLLEGE OF THE SEQUOIAS CC (1): C Fotias 1560. CONCORD CC (7): R Guzman 1510*; G Harcus, Jr. 1427*; J Moore, Jr. 1656#; W Noble 1396#; F Olvera, Sr. 1536; F Ulrich 1636; C Vail 1602. DEUEL VOCATIONAL INSTITUTION CHESS INT. GROUP (2): C Comstock 2037#; M Johnson 1554. EVERYMAN ATHLETIC CLUB CC (1): J Rowell 1857. FREMONT CC (7): R Fernandez 1437; A Friedman 1853#; K Jackson, Jr. 1681#; B Jansen 1490#; G MacLeod 1574; W Orr 1970#; H Poschmann 1759. HAYWARD CC (6): M Albertson 1478#; E Bartholomew 1613; R Holloway 1535*; K Lawless 1753; L Lopez 1800*; E McNally 1846. LIVERMORE CC (10): R Anderson 1406#; H Barnett 1783; G Boer 1849*; R Cooper 1492*; K Giallanza 1491*; W Nelson 1873*; G Roust 1687; J Shearer 1956; D Smith 1643#; K Trigger 1427#. MARIN CC (1): L Post 1822. MARTINEZ CC (2): R Nace 1684*; R Swanson 1615. MONTEREY PENINSULA CC: R Atkinson 1548; M Ewell 2067; W Kennedy 1500. OAKLAND CC (23): J Acers 2158; R Alexander 1638; T Anderson 1443*; C Barnes 1886; A Boyd 1154*; M Costa 1579*; M Crossland 1472*; R Cuneo 1781; D Forthoffer 1978; L Lane 1258*; M Lee 1502#; R Lee 1446*; C Maddigan 1909; E Meyers 1693; R Ng 1816; S Quen 1921#; A Ramirez 1529#; E Rubsamen 1585#; M Sloane 1516#; W Sprague 1850; S Trez 1813; G Weber 1848; M Weber 1932*. ORINDA CC (1): D Campbell 1713. PIEDMONT HILLS H. S. CC (1): J Brittain 1368#. RICHMOND CC (4): L Baker 1555; D Claudio 1653#; S Poulsen 1882; L Trotter 1521. SAN JOSE CC (26): W Adams 1942; T Byrne 1786#; A Critchlow 1821; Francis Crofut 1829; Fred Crofut 1791; R Delashmatt 1622; W Dickinson 1712; A Ferreira 1892; A Gardner 1548#; M Gazze 1696; R Gordon 1731; J Iwashita 2050; H Mohrmann 1825; E Mueller 1878; D Myers 1790; C O'Brien 1501*; E Oshun 2217; F Penoyer 1642; J L Peterson 1637; H Radke 1903; E Rosenthal 1501; R Roubal 1820; G Temme 1640; J Thomas 1542; P Weiss 1712; S Willett 1489#. SANTA ROSA CC (5): J Evans 1572; L Henderson 1580*; D Johnson 1741; B Keeney 1725#; S Kornher 1964. UC DAVIS CC (6): G Comini 1671; D Olmsted 1688; G Pickler 2061; R Roach 1679; M Shifrine 1792; S Von Oettingen 2100. VALLEJO CC (5): F Harris 1755; L O'Doan 1802; G Rasmussen 1869; B Smith 1856; N Wood 2087. VISALIA CC (1): C Fotias 1560. WALNUT CREEK CC (6): S Bass 815#; G Bigelow 1609*; M McNown 1633; S Mujahed 1596; C Vail 1602; J Weiler 1435.

MATING MAZE

By RICHARD LEE, Chess Voice Problems Columnist

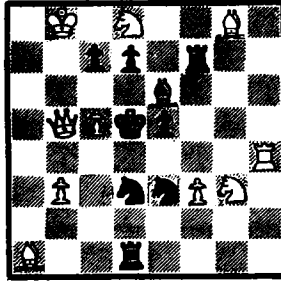
No. 75
LEAST DIFFICULT

W to play and mate in two.



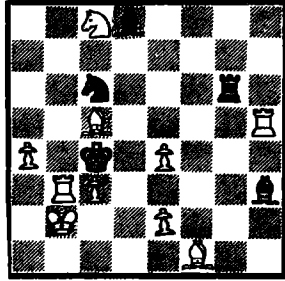
No. 76
MORE DIFFICULT

W to play and mate in two.



No. 77
MOST DIFFICULT

W to play and mate in two.



Problem-Solving Contest: December-January

Solutions (the key move, i.e., the first move, is sufficient) in English Descriptive Notation must be received at this magazine's address (cf. page 2 of this issue) by 15 December. The winner will be the entrant who submits the correct solutions to the most problems. Ties will be broken by lot.

The prize for this contest will be International Chess Tournament: Moscow 1967, published by James R. A. Schroeder (Nov. 1967). Many great names played in this fantastically strong tournament: Stein, Tal, Smyslov, Bobotsov, Gipslis, World Chess Champion Boris Spassky, Bronstein, Geller, Keres, Najdorf, former World Chess Champion Tigran Petrosian, Georghiu, Gligoric, Pachman, Uhlmann, Bilek, Filip. The book includes round-by-round results, 153 games with some annotations, and a complete crosstable.

*

Solutions to Last Issue's Problems

No. 1-A: White plays 1 R-QB5!, simultaneously severing Black's main attacking artery and threatening to execute the king with 2 RxPch followed by 3 Q-N7mate. No. 2-A: White sacrifices rook and queen for the sake of a winning knight fork by 1 R-Q6!, QxR; 2 QxNch, K-B2; 3 QxRch, KxQ; 4 N-B5ch and 5 NxQ. Faulty tries are 1 NxN, Q-N3ch and 1 QxNch, K-B2. No. 3-A: Black sets the stage for a brilliant quite move after 1...B-B5!; 2 RxB, NxR; 3 QxN, Q-N8ch; 4 Q-B1, QxQch; 5 BxQ, R-R1!
/Richard R. Shorman, CCCA Publicity Director/

*

Winner of the October-November Contest

No entrant submitted an entirely correct set of solutions. The prize therefore goes to Steven Cross, of Berkeley, who erred in only one variation. We hope Mr. Cross will enjoy his newly won copy of James R. A. Schroeder's International Chess Tournament: Hastings-1934/35.

STATEMENT OF OWNERSHIP, MANAGEMENT AND CIRCULATION

(Act of October 23, 1962; Section 4369, Title 39, United States Code) 1. Date of Filing: 20 September 1970. 2. Title of Publication: Central California Chess Voice, The. 3. Frequency of Issue: Bimonthly. 4. Location of Known Office of Publication: Campus Bancroft Bldg., Rm. 206, 2440 Bancroft Wy., Alameda Co., Berkeley, CA 94704. THE PUBLICATION'S MAILING ADDRESS IS: P. O. Box 1622, Oakland, CA 94604, TO WHICH ALL CORRESPONDENCE MUST BE SENT. 5. Location of the Headquarters or General Business Offices of the Publishers: Same. 6. Names and Addresses of Publisher, Editor, and Managing Editor: Publisher, Martin E. Morrison & Elwin C. Meyers, P. O. Box 1622, Oakland, CA 94604; Editor: Same; Managing Editor: Same. 7. Owner: Central California Chess Assn. (Ownership equally divided among all members of the Assn.), P. O. Box 1622, Oakland, CA 94604. 8. Known Bondholders, Mortgagees, and Other Security Holders Owning or Holding 1 Percent or More of Total Amount of Bonds, Mortgages or Other Securities: None. 10. Extent and Nature of Circulation (Average No. Copies Each Issue During Preceding 4 Months, Actual Number of Copies of Single Issue Published Nearest to Filing Date): A. Total No. Copies Printed 555, 550; B. Paid Circulation, 1. Sales Through Dealers and Carriers, Street Vendors and Counter Sales 0, 0, 2. Mail Subscriptions 501, 506; C. Total Paid Circulation 501, 506; D. Free Distribution by Mail, Carrier or Other Means 44, 44; E. Total Distribution 545, 550; F. Office Use, Left-over, Unaccounted, Spoiled after Printing 10, 10; G. Total 555, 560. I certify that the statements made by me above are correct and complete. /s/ Martin E. Morrison.

UNDERSTANDING CHESS LAWS AND TOURNAMENT DIRECTION: THE FIDE HAS ACTED!
By MARTIN E. MORRISON

Member, USCF Tournament Director Certification Committee

Questions and comments from readers on chess laws and tournament direction are welcomed. Contact the columnist at P. O. Box 1622, Oakland, CA 94604; telephone: (415) 582-1973.

*

In the last issue I described the circumstances which led to my writing the FIDE (World Chess Federation) on the critical matter of time forfeitures and quoted in full the letter which was sent to FIDE President Rogard in June. I shall now continue the odyssey of my letter to its final disposition.

In addition to President Rogard, copies of the letter went to our own FIDE Vice President for Zone 5 (U. S. A.), Fred Cramer, and Kenneth Harkness, who was to become a member of the Permanent Commission of the FIDE for the Laws of the Game (to my knowledge, the first American to be so honored). Mr. Harkness brought my letter to the floor of the USCF's Tournament Director Workshop meeting, held in Boston in conjunction with the USCF's 1970 business meetings and the US Open. Predictably, my proposal on such an important subject stimulated serious thought on and full discussion of the problem.

Some officials considered the letter "not sufficiently specific." They wanted "to lay down a specific procedure for the tournament directors . . . drawn from their own extensive experience." Mr. Cramer, arguing on behalf of my letter, then pointed out that my proposal "was intentionally broad, so as to be acceptable at an international level, to preclude discussion of detailed content . . . and to avoid anti-USA opposition sure to result from a too USCF-y proposition." He also noted that my letter outlining the problem was succinct enough to avoid long translation problems. Finally, Mr. Harkness suggested, and the USCF officially endorsed, as the basis of a possible interpretation by the FIDE Rules Commission, the problem-situation identified in my wording and a solution as follows: "In those tournaments in which the number of players is large and the number of officials is small, special regulations may be adopted by the organizers to simplify the procedure of deciding whether a player has lost a game under Article 17, no. 1." Mr. Harkness subsequently sent to the FIDE this proposal of the USCF's, and I, my support of the USCF's action.

Site of the FIDE Congress and 21st Chess Olympiad this year was Siegen, Germany, a town of about 100,000 inhabitants some 50 miles from Bonn, the capital of West Germany. The Rules Commission met on the 18th of September, the Saturday before the convening of the FIDE General Assembly. Present were President Rogard, B. Harry Golombek, noted British master, Ion Gudju, of Roumania, Armin Heintze, of East Germany, and Zakhari Petrov Sanchez, of Bulgaria, and, as guests, FIDE's new President, International Grandmaster Dr. Machgielis Euwe, our own Kenneth Harkness, and former commission chairman H. J. J. Slavekoorde.

Question 4 on the agenda read as follows: "The US Chess Federation has informed that many US tournaments are organized in which the number of players is large and the number of officials is rather small. In such tournaments the procedure to decide whether a player has lost a game under Article 17.1 cannot be observed. The tournaments /sic/ organizers are forced to adopt special regulations in order to simplify the procedure. The Commission's answer, as recorded in its report, was: "With reference to the Commission's 'General Observations' of August 1958 /cf. Martin E. Morrison and Elwin C. Meyers, Tournament Direction Guide and Manual (Oakland: Central California Chess Association, c. 1969), p. I-III.2/ the Commission expresses the opinion that special regulations should be allowed in so far as they are required for the conducting of tournaments of the kind mentioned above."

Thus ends the odyssey of one man's suggestion to clarify the international Laws of Chess. For tournament officials in the US, the FIDE decision legitimizes new USCF Tournament Rules 18 and 19 /cf. Kenneth Harkness, Official Chess Handbook, (New York: David McKay, c. 1970), p. 108/. For the USCF, it is the first proposal on the matter of the Laws of Chess in eight years. For the international world of chess, I hope it will mean clear and fairer application of those Laws in the best sense of collaboration echiquenne, chess fellowship. For the future, we must dedicate ourselves to working for even more progress in this critical area.

*

I must express my copious thanks to Fred Cramer for generously giving of his time to assist me in the many drafts by which my letter was perfected since February and also for air-mailing to me from Siegen the Commission's report. To Kenneth Harkness must also go my gratitude for sending to me the official USCF material relating to the question.

Letters to the Editors



USCF Executive Director Praises CCCA Championship
TO MARTIN E. MORRISON:

. . . Just a brief note of congratulations on your continued achievement in chess promotion, particularly the record-breaking CCCA Championship of Central California.

/s/ Edmund B. Edmondson
USCF Executive Director

*

Acers Accepts CCCA Berth to State Championship

TO MARTIN E. MORRISON:

This is to inform you that I accept with pleasure your CCCA berth to the State Championship, and I most certainly will win it. Thanks!

/s/ Jude F. Acers
USCF Master

*

Mating Maze Praised

EDITORS:

If I may, I'd like to congratulate you on your column, "Mating Maze." I think it's the best article you have in Chess Voice—AND PLEASE KEEP GIVING BOOKS AS PRIZE. I again think it's a great idea.

/s/ Kenneth Jackson, Jr.
Union City

USCF VP Praises Chess Voice's Tournament Direction Articles

TO MARTIN E. MORRISON:

You are doing a fine job with your magazine, especially as regards spotlighting the troubles of tournament directing. If I ever get the time, I'd like to write a manual based upon my experiences with tournament promotion and direction here in Illinois—but I don't know when I'll have the leisure! Keep up the good work.

/s/ Frank J. Skoff
USCF Vice President

*

Vallejo CC Buys TD Guide and Manual for All Members

TO MARTIN E. MORRISON:

Your quote of \$33.00 for 25 copies of the first four installments of your Tournament Direction Guide and Manual with binders is accepted by the Vallejo Chess Club and a check for \$33.00 is enclosed as payment.

The distribution of the Manual is an experiment which we hope will induce at least some of our members to study the rules of chess with the same interest that is devoted to other aspects of the game.

/s/ Gunnar H. Rasmussen
Secretary - Tournament Director,
Vallejo Chess Club

✓We feel that Mr. Rasmussen and his club should be congratulated on this unique gesture which will give club members an unusual background in chess laws and tournament direction, an increasingly important topic, and which at the same time will support a worthwhile CCCA project. Any other clubs wishing to follow Vallejo's example can write the Editors for equally generous quantity prices.—EDS.✓

*

Antioch CC Disbands; Donates Treasury to CCCA

EDITORS:

I regret to say that the Antioch Chess Club is disbanded. We haven't met for six months. I have enclosed a check in the amount of \$35.00 to pay for one year's dues for the members of our club, as I'm sure they would like to continue to receive the magazine every two months. The remainder I would like to donate to the Central California Chess Association. I would appreciate it very much if you would mention in your next issue that our club has disbanded, and after paying one year's dues, we have donated the entire treasury to the CCCA.

/s/ Howard B. Lewis
President, Antioch Chess Club

√We sincerely hope that this disbandment will be only temporary, as Mr. Lewis showed a great deal of initiative in establishing a club for the residents of the Antioch area and provided them with a means for expressing their interest in chess. The CCCA gratefully acknowledges the Antioch Chess Club's donation and assures the club that the money will be put to the best possible use for the chess players of Central California area, and that the disposition of the money will be arrived at democratically by a vote of the chess players of the CCCA.—EDS,7

President of European Chess District Comments on TD Guide and Manual
TO MARTIN E. MORRISON:

First allow me to introduce myself. I am Richard B. Feren, President of the European Chess District of the USCF. We hold frequent tournaments for the benefit of US military and civilian personnel stationed over here in Europe.

I recently obtained a copy of your Tournament Direction Guide and Manual. It is an excellent piece of work, and I would like to offer my congratulations.

My original intent in writing to you was to ask a question, but I just read that section of the manual again and answered my own question!

Again, congratulations and keep up the good work.

/s/ Richard B. Feren

President, European Chess District

√Thank you, and may we take this opportunity to draw our readers' attention to the great strides the USCF European Chess District has been making of late in increasing tournament participation in its area. Formerly drawing only a handful of players, European USCF tournaments are now attracting almost 50 participants.

AFFILIATE NEWS

If your affiliate is not listed, we have not received any material concerning your activities. Please keep us informed of all your events for publication.

ALAMEDA CC . . . will hold a simultaneous exhibition by USCF Master Jude F. Acers on Monday, 7 December, at 8:00 p.m. at the Alameda Chess Club's quarters, McKinley Park Recreation Center, Walnut Street and Buena Vista Avenue, Alameda. There will be no charge to play; a lecture by Mr. Acers will precede the exhibition. The following Monday (14 December), the club tentatively plans to begin a round-robin tournament. The club is currently reforming through the hard work of Marvin Smitherman with the assistance of Albert Hall. Regular meetings are held on Mondays from 7:00 to 11:00 p.m. at the club's quarters.

BERKELEY CC . . . completed on 2 October a 30-30 Tournament in four-man round-robin sections. Winners of their respective sections were: Steve Dinerstein, Don Gosiewski, Bruce Hildreth, Dinis G. M. Santos, C. D. Yaffe, Edward S. Yeung. The club is currently involved in a Six-Round Random Tournament, which will continue until the Christmas holidays. After a simultaneous exhibition by Jude F. Acers on 15 January, the club will proceed to an open Swiss System tournament, with sections for Master/Expert players and Amateurs (Classes A through E). For further details, see page 5 of this issue. After three months of reorganized operation now, the club has become the largest CCCA affiliate with over 60 members.

MONTEREY PENINSULA CC . . . Just can't seem to stop Michael R. Ewell, Monterey County Chess Champion, when it comes to the club's speed tournaments. Theodore Yudakufski gave him a good go in the September tournament, though, by finishing in a tie with Mr. Ewell. In a post-tournament game to determine the month's champion, Mr. Yudakufski's clock ran faster than Mr. Ewell's, so--the winner and still Champion--Michael R. Ewell.

OAKLAND CC . . . Member David J. Forthoffer made quite a smash at the California Open, held in Ventura over the Labor Day weekend. He turned in a great performance, drawing with International Master Julio A. Kaplan and defeating Irving Rivise, but he couldn't hold Tibor Weinberger, a Master, who won the tournament. He finished ninth out of 164 in the final standings--not bad!

UC DAVIS CC . . . Gary C. Pickler, USCF Expert, won the Davis Summer Tourney with a near-perfect $6\frac{1}{2}-\frac{1}{2}$ score, drawing only with second-place finisher Donald Napoli. E. Leitis finished third. There have been three recent speed tournaments at the club, and Mr. Pickler has won all of these to sweep the Davis honors for this issue. Mr. Napoli too was consistent, finishing second in two of these events, with A. Estelai also taking one runner-up position.

INTRODUCING BLANKBOARD CHESS
By ALBERT E. RACKETT, of Santa Clara

"The game of chess is played between two opponents by moving men on a square board called a 'chessboard.'" Thus our beloved art is described by the FIDE rules."

The definition seemed quite accurate when we first became acquainted with the game. There were two opponents, one chessboard, and 32 carved objects — nothing more. Our well-meaning instructor held a little castle tower before our gaze and said in one breath, "This is the rook it moves straight ahead and back and side-ways." Each strange figure in turn was inseparably linked with its movements. So thoroughly were we indoctrinated that it seemed that the powers of the sculpted figures were somehow imbued into them during the manufacturing process. Our task was to discern the faint lines of influence emanating from the pieces as they faced each other across the board.

After we moved the men on the square board through more than a few games, we discovered that the true nature of the bishop is its influence along the diagonals, whether the symbol of that power be a golden elephant or a 7-Up bottle cap. We stopped thinking of horses and crowns and conjured up intricate patterns of pins and forks. Now the little wooden paperweights serve only as reminders of where our plans begin. As we look deeply into our combinations, we stumble over them as we weave our fabric of attack and defense. We have come to realize that the less we depend upon the reminders, the more facile our imagination, the better game we are likely to play.

If our game is truly one of interacting influences and not of weighted, felted symbols, why may not the game be played without them? This is a reasonable question, and the only reasonable answer is that chess without men is not only possible and instructive for intermediate players but also quite enjoyable. To prove the point, five players, none above "A" strength, recently competed in the world's first blankboard tournament. On five consecutive Wednesday evenings four players announced their moves across two vacant chess boards as the fifth acted as a referee, making the moves on boards out of sight of the competitors. Their pleasant surprise at the quality of the game they were able to play will be an experience shared by most players when they first try the game.

The newly created title of "World Blankboard Champion" was decisively won by Donald Card, with a score of 4-0. His opponents were David Burgess, Donald Harris, Mr. Pinard, and this writer.

Those of us interested in promoting the game of chess among the uninitiated should give careful consideration to the change of perspective I have described. We want to give to our friends the blessings of an interest in chess, but we tend to forget that all the beauty, all the fascination, all the other rewards of the game, were found after we learned the true nature of the pieces. We display none of the riches of the game to the beginner by riveting his attention to the bare mechanics of play, and when he sees 200 competitors in a tournament seated at 100 boards with 3200 men, his first impressions of a purely mechanical game are reinforced. How much more intriguing to the spectators, how much more true to the spirit of the game would be the sight of combatants battling fiercely in mental duels across vacant chessboards?

The game of blankboard thus has a promotional aspect to recommend it to tournament organizers, but its value to the players is obvious. International Master George Koltanowski recommends learning to play a game blindfolded to improve one's play. Frank Marshall stated that a player's ability is largely proportional to his powers of visual imagery. The writer first tried it as a means of deriving some challenge from games with weaker players, but aside from its use as an odds-giving device, it cannot help but improve the player's facility in visualizing combinations over the board.

Mr. Card now looks forward to defending his title against the winner of the world's second blankboard tourney. Anyone organizing such an event should write to the address of this magazine (cf. page two of this issue) for CCCA Publication No. 6 for a copy of the rules.

Here is the last-round game that gave Mr. Card his victory. To appreciate this representative game properly, the reader should play it through in the same manner as the players, sans pieces.

White: Donald Harris; Black: Donald Card.

| | | | | | | | |
|---------|-------|---------|-------|----------|--------|------------|-------|
| 1 P-K4 | P-K3 | 7 PxP | B-Q2 | 13 B-Q5 | E-H3 | 19 NxN | QxNch |
| 2 P-Q4 | P-Q4 | 8 N-R2 | Q-Nch | 14 Q-N3 | NxQP | 20 QxQ | NxQ |
| 3 P-R5 | P-QB4 | 9 K-Q1 | R-B1 | 15 NxNP | PxN | 21 resigns | |
| 4 Q-N4 | N-QB3 | 10 N-Q2 | Q-N3 | 16 BxPch | E-B1 | | |
| 5 P-QB3 | Q-N3 | 11 N-R4 | P-KB4 | 17 BxNch | Nx3 | | |
| 6 N-B2 | PxP | 12 Q-B4 | E-N3 | 18 Q-Bch | N/3-B4 | | |

CCCA AFFILIATE DIRECTORY

(Current number of CCCA affiliates: 38; members: 402.)

For information on affiliation to the CCCA and its benefits, contact the Editors (address and telephone number on page 2). THE FOLLOWING ARE NOT MAILING ADDRESSES.

- ALAMEDA CC: M, 7-11 p.m.; McKinley Pk. Rec. Cen., Walnut St. & Buena Vista Ave..
- ALAMEDA NAS CC: Alameda Naval Air Sta.
- ANTIOCH CC: Inactive at present.
- BECHTEL CC: W, 7:30 p.m.; 11th Fl. Conf. Rm., 50 Beale St., San Francisco.
- BERKELEY CITY CC: F, 7-11 p.m.; Palm Rm., Berkeley Cen. YMCA, 2001 Allston Wy.
- BERKELEY UC CC: F, 7-11 p.m.; Palm Rm., Berkeley Cen. YMCA, 2001 Allston Wy.
- BERKELEY LIVE OAK CC: M, 7-10:30 p.m.; Live Oak Rec. Cen., 1301 Shattuck Ave.
- BERKELEY SEN. CC: TU, 9 a.m.-12 m.; Sen. Cen. of Berkeley, 1849 University Ave.
- CAPITAL CITY CC: W, 7:30-11 p.m.; Clunie Clubhouse, Alhambra & "P" Sts.
- CASA ALVARADO CHESS CC: TU-SU, 12 m.-12 p.m.; Casa Alvarado Chess Cen., 467 Alvarado St., Monterey.
- CATERPILLAR CC: Inactive at present.
- CHABOT COL. CC: M, 6-10 p.m.; Rm. 830, Chabot Col., 25555 Hesperian Blvd., Mt. Eden.
- COL. OF THE SEQUIOIAS CC: TU, 12 m.-1 p.m.; Rm. 338, Col. of the Sequoias, Mooney Blvd., Visalia.
- CONCORD CC: F, 7:30-11 p.m.; Concord Sen. Citizens Cen., 2974 Salvio St.
- DEUEL VOCATIONAL INSTITUTION CHESS INT. GROUP: M & F, 7-9:30 p.m.; Deuel Vocational Institution, So. Kasson Rd., Tracy.
- EVERYMAN ATHLETIC CLUB CC: TU night; Del Webb Townhouse, 2220 Tulare St., Fresno.
- FREMONT CC: TH, 7-11 p.m.; Westridge Pk. Comm. Cen., 36200 Fremont Blvd.
- HAYWARD CC: M & F, 8-10:30 p.m.; San Felipe Pk., 2058 "D" St.
- LIVERMORE CC: 1st & 3rd F, 7:30-11 p.m.; Old Lib., Carnegie Bldg., 4th & "J" Sts.
- MARIN CC: TU, 8 p.m.; London Arms, 81 Red Hill Ave., San Anselmo.
- MARTINEZ CC: M, 7:30; Martinez Hacienda, 1111 Ferry St.
- MECHANICS' INSTITUTE CC: M-F 9 a.m.-11 p.m., SA 9 a.m.-12 p.m., SU & HOL. 9 a.m.-10 p.m.; Mechanics' Institute Bldg., 4th Fl., 57 Post St., San Francisco.
- MILL VALLEY CC: TU, 8 p.m.; London Arms, 81 Red Hill Ave., San Anselmo.
- MONTEREY PEN. CC: TH, 7:30 p.m.; Casa Alvarado Chess Cen., 467 Alvarado St., Monterey.
- OAKLAND CC: F, 7-11:30 p.m.; Multipurpose Rm., Lincoln Elem. Sch., 225 Eleventh St.
- ORINDA CC: TH, 7:30 p.m.; Orinda Comm. Ch., 10 Irwin Wy., Orinda Vil.
- PIEDMONT HILLS H. S. CC: M-F, 2:30-4 p.m.; Rm. E14, Piedmont Hills H. S., 1377 Piedmont Rd., San Jose.
- PLEASANT HILL CC: F, 7:30 p.m.; Pleasant Hill Pk. & Rec. Cen., 147 Gregory Ln.
- RICHMOND CC: F, 7 p.m.; Our Lady of Mercy Ch., 301 W. Richmond Ave., Pt. Richmond.
- ST. MARY'S COL. CC: St. Mary's Col. of Calif., Moraga.
- SAN JOSE CC: W, 7:30 p.m.; San Jose Cen. YMCA, 1717 The Alameda.
- SAN QUENTIN CC: Calif. State Prison.
- SANTA ROSA CC: F, 7-10 p.m.; Santa Rosa Jr. Col., 1501 Mendocino Ave.
- UC DAVIS CC: M, 7-11 p.m.; Games Rm., Mem. Union, Univ. of Calif., Davis.
- VALLEJO CC: F, 7:30 p.m.; Vallejo Comm. Cen. Bldg., 225 Amador St.
- VISALIA CC: F, 7:30 p.m.; Rec. Pk. Bldg., 345 No. Jacob St.
- WALNUT CREEK CC: TU, 7:30 p.m.; Sen. Citizens Hospitality House, 1385 Civic Dr.
- WESTERN ADDITION CC: TU, 7:30 p.m.; Family Serv. Agcy., 1010 Gough St., Cathedral Hill, San Francisco.

 A SPECIAL BONUS FOR CHESS VOICE READERS. Either in this issue or the next (depending on mail delivery from Europe, issue no. 20 of Chess Express, The International Chess Magazine, containing the final crosstables, photographs, games, and comment from the 1970 Chess Olympiad will be inserted into Chess Voice. Our insertion of this well-know international magazine will afford readers an unusual opportunity to examine this fine produce and, hopefully, to subscribe.

 CCCA PUBLICATION NO. 5, TOURNAMENT DIRECTION GUIDE AND MANUAL, by Martin E. Morrison and Elwin C. Meyers, which has already received national recognition, has been released up to the sixth installment. A few copies are still left at \$3.00 (six installments, 55 pages).

 CCCA PUBLICATION NO. 6, BLANKBOARD CHESS, by Albert E. Rackett, has just been released. 20¢ for 2 pages.

 SEND ORDERS to the Editors (address on page 2 of this issue). The small cost is only to offset the cost of publication. Manuscripts for publication are sought from readers.

POSTMASTER: SEND P. O. D. FORM 3579 TO:
Editors

Central California
Chess Association
Post Office Box 1622
Oakland, California 94604
Telephone: (415) 582-1873

LYNN A. AUSTIN (L.) AND
TIMOTHY I. MOLLER (R.)
CONCENTRATE ON A GAME IN
THE BERKELEY CHESS CLUB'S
SIX-ROUND RANDOM TOURNA-
MENT. Visitor Jerry
Streid looks on. The
event attracted 60 par-
ticipants in a USCF-
rated and an unrated sec-
tion. The club, reor-
ganized in August, has
become the largest CCCA
affiliate with all stren-
gths of players. (Photo-
graph courtesy of Martin
E. Morrison, CCCA Editor.)



NEXT CCCA GENERAL MEMBERSHIP MEETING (THE ANNUAL MEETING): Friday, 8 January, 8:00 p.m., Berkeley Chess Club, Palm Room, Berkeley Central YMCA, 2001 Allston Way, Berkeley. Every member of the CCCA, i.e., every person who is certified by the appropriate officer of a chess club or organization affiliated to the CCCA (listed on page 18) to be a member or officer of the affiliate, has fully privileges of debate and voting. Nonmembers are welcome. Annual elections.

NEXT USCF TOURNAMENTS OF THE CCCA AND ITS AFFILIATES: Early Dec., Open Tourney; 12-13 Dec., 4th Ann. San Francisco Open Chess T.; 19-20 Dec., Oakland CC's 5th Ann. San Francisco Bay Area Amateur Open Chess Championship T.; Jan., Weekend Tourna-ment; 2 Jan., CCCA's Regional 1-Day Round Robin Chess T.; 22 Jan. & 5 fol. Fris., Master/Expert Open; 29 Jan. & 5 fol. Fris., Amateur Open. See page three of this issue for details.

CHESS CLOCKS: Lowest price in the US; no wait-
ing weeks for delivery. BHB Luxus, cream-col-
ored plastic case, 6" x 3" x 1 1/2"; two-year guar-
antee from the manufacturer; "the world standard
for dependable quality and durability at a moder-
ate price; used at the most recent Interzonal Tournament" (USCF).
ONLY \$12.50. By immediate pickup from Leonard F. Trotter,
Richard R. Shorman, Martin E. Morrison (addresses and telephone
numbers on p. 2), or John R. Moore, Jr. (1390 Kansas Circle,
Concord, CA 94521, 682-2438 or, at work in San Francisco, 556-
6895); or by mail from Mr. Trotter only (add 75¢ postage and
insurance for distances within 50 miles of El Cerrito).

NEXT AFFILIATE ASSESSMENTS DUE: 5 December and are delinquent
thereafter. Appropriate officers of the affiliates should send 20¢
per club member, along with a list of the names and addresses of all
affiliate's members, to the CCCA Treasurer (address on p.2). "A fee
of \$1 will be levied against any affiliate which pays its assess-
ment more than two weeks late without a valid excuse accepted by the
Treasurer."



USCF MEMBERSHIPS AT A 20% DISCOUNT, ONLY FOR

CCCA MEMBERS OR THOSE PLAYERS JOINING THE USCF AT A

**CCCA-SPONSORED TOURNAMENT: \$4 (under 21), \$8 (21
and over) per annum, new or renewal. Others may
join at the regular rate of \$5 or \$10, respectively. Send
memberships to the CCCA Treasurer. Benefits include a monthly
Chess Life & Review subscription, eligibility for a USCF (na-
tional) rating, and discounts on chess equipment.**

**CSCF MEMBERSHIPS, \$2.50 (under 21), \$5 (21 and over) per
annum from CSCF Treasurer Dr. Ralph R. Huitgren, 1501 LeRoy Ave-
nue, Berkeley, CA 94708. Benefits include a bimonthly Cali-
fornia Chess Reporter subscription, use of a CSCF Rating Card
(to keep track of your approximate updated USCF rating), and
eligibility for Qualifying Points toward becoming the CCCA's
Finalist in the California State Chess Championship.**

**ALL CHESS PLAYERS ARE STRONGLY URGED TO BECOME MEMBERS OF THE
UNITED STATES (USCF) AND CALIFORNIA STATE (CSCF) CHESS FEDERATIONS.**