

59 Chess Clubs  
and Organizations

CIRCULATION  
507 Chess Players

76 Chess Publications  
and Libraries



# SCACCHIC VOICE

CENTRAL CALIFORNIA'S CHESS MAGAZINE  
and  
OFFICIAL ORGAN  
of the  
CENTRAL CALIFORNIA CHESS ASSOCIATION  
(An Authorized Chapter of the United States Chess Federation)

MARTIN E. MORRISON . . . .

Editors

. . . . . ELWIN C. MEYERS

February-March 1970  
Volume II  
Numbers x-xi



THE OAKLAND CHESS CLUB'S FOURTH ANNUAL SAN FRANCISCO BAY AREA AMATEUR OPEN CHESS TOURNAMENT (20-21 December), once again plagued by showers, nevertheless drew a near-record crowd of 55 United States Chess Federation players, a 31% increase over last year's version. This scene, taken during round one, shows at the front table (l. to r., bk. to fr.) Flynn Penoyer, Vice President of CCCA affiliate San Jose Chess Club, vs. Edward S. Yeung, Sidney Willett vs. Nieba Jones, who travelled 200 miles from Porterville to participate, and Elwin C. Meyers, CCCA Editor, vs. Gilbert Tenme. Standing in the center is Richard Roubal, and Lt. Col. George W. Roust (facing fr.) plays at the center table. --Photograph and story by Martin E. Morrison, Scacchic Voice Editor.

Editors  
Central California  
Chess Association  
c/o Post Office Box 1622  
Oakland, California 94604  
Telephone: (415) 582-1973

Scacchic Voice is edited and published bimonthly (with monthly supplementary issues as needed). Every member of the CCCA, i.e., every member of a chess club or organization affiliated to the CCCA (listed on p. 15) automatically receives a Scacchic Voice subscription mailed to his home.

NONMEMBER SUBSCRIPTIONS: \$2.00 per annum.

ADVERTISEMENTS: 5¢ per word per issue on any subject (classified advertisement), \$5.00 per eighth page per issue, \$20.00 per insert per issue (this cost is more than one cent cheaper per page for mailing tournament circulars, etc., than postage costs alone).

The opinions expressed in Scacchic Voice are those of the Editors or of the respective contributors. They do not necessarily constitute an official policy of the CCCA or any of its affiliates.

\*\*\*CCCA OFFICERS AND OFFICIALS\*\*\*

CHAIRMAN  
c/o Post Office Box 1622, Oakland, CA 94604  
SECRETARY  
c/o Post Office Box 1622, Oakland, CA 94604  
TREASURER  
5315 MacDonal Avenue, El Cerrito, CA 94530  
LEAGUE DIRECTORS  
3546 Lincoln Avenue, Oakland, CA 94602

27858 Tampa Avenue, Hayward, CA 94544  
RATING ADMINISTRATOR  
622 Via Del Sol, Livermore, CA 94550  
EDITORS  
c/o Post Office Box 1622, Oakland, CA 94604  
c/o Post Office Box 1622, Oakland, CA 94604  
PUBLICITY DIRECTORS  
27858 Tampa Avenue, Hayward, CA 94544

MARTIN E. MORRISON  
582-1973  
SALEH MUJAHED  
(582-1973)  
LEONARD F. TROTTIER  
233-1595  
FRANK V. LEFFMAN  
533-3166  
RICHARD R. SHORMAN  
782-5029  
WESLEY A. NELSON  
447-4393  
MARTIN E. MORRISON  
582-1973  
ELWIN C. MEYERS  
(582-1973)  
RICHARD R. SHORMAN  
782-5029  
BYRON DELANEY

Manor Apartments, 16913 Meekland Avenue, Hayward, CA 94541  
Area Vice Chairman: Sergius Von Ottingen (Sacramento-Stockton Area), Stephen Kornber (North Bay Area), Jerome Friedman (Central Bay Area), William T. Adams (South Bay Area), Chris A. Fotias (Central Valley Area).  
CCCA Championship Coördinator: Hans Poschmann. Club Coördinator: Everett L. McNally.

Standing Committees: Clock—Leonard F. Trottier, Chairman, Frank V. Leffman, Martin E. Morrison; Tournament and Club Relations: Martin E. Morrison, Chairman, Elwin C. Meyers (Standing Tournament Subcommittee), Harold L. Barnett, Byron Delaney Everett L. McNally.

USCF Directors: William T. Adams, Elwin C. Meyers, Martin E. Morrison, E. H. Mueller, Frank M. Olvera, Sr., Robert L. Oyster, Gunnar H. Rasmussen, Manuel Rivera, Sergius Von Ottingen. CSCF Directors: Martin E. Morrison, Gunnar H. Rasmussen. Members should feel free to contact their officers and officials regarding any aspect of chess business; they will be happy to serve you. On the other hand, additional help is always needed—offer your help to your CCCA.

\*\*\*NOTABLE QUOTES\*\*\*

THE POPULARITY OF THE GAME OF CHESS IS AT STAKE unless the rules of chess are reasonable and clear. Thus, we recommend more work on chess rules and also that we take a closer look at tournament directors. /Chess Horizons/ I FEEL THAT THERE SHOULD AND WILL BE A "TOURNAMENT COMMITTEE" SOMEDAY. Just as there are two referees for a basketball game, there will be two directors to oversee a chess tournament. This will result in an easier, more enjoyable job for the directors and a better run event. /Northwest Chess/ A DREAM COME TRUE—the CCCA already does this for many of its tournaments!

\*\*\*TOURNAMENT CALENDAR\*\*\*

21-22	FEBRUARY	*CCCA'S USCF CLASS CHESS TOURNAMENT AT BERKELEY (THE WASHINGTONIAN)	USCF	BERKELEY
1-6	March	National Open	USCF	Sparks, Nevada
20-22	MARCH	*SIXTH ANNUAL PRE-EASTER VISALIA AMATEUR OPEN CHESS TOURNAMENT	USCF	VISALIA
22	MARCH	*OAKLAND CHESS CLUB'S THIRD ANNUAL FOUR-MAN SECTIONAL CHESS TOURNAMENT	USCF or CFNC	OAKLAND
29	MARCH	*DAVIS OPEN CHESS MATCH-TOURNAMENT	USCF	DAVIS
18-19	APRIL	*CCCA'S USCF FIRST 1970 CLASS TOURNAMENT AT CONCORD	USCF	CONCORD
8-10	MAY	*CITY CHAMPIONSHIP	USCF	SACRAMENTO
9-10	May	Mechanics' Open	USCF	San Francisco
10	MAY	*CCCA'S SECOND 1970 REGIONAL ONE-DAY ROUND ROBIN CHESS TOURNAMENT	USCF	WALNUT CREEK
24	MAY	*DAVIS OPEN CHESS MATCH-TOURNAMENT	USCF	DAVIS
30-31	May	Memorial Day Weekend Tournament	USCF, CSCF	Bakersfield
6-7	JUNE	*LIVERMORE OPEN	USCF	LIVERMORE
13-14	June	Four-round "Tornado" Rating Tournament	USCF	San Francisco
22	June	Eighth Annual Scholarship Chess Festival	-	Hayward
27-28	JUNE	*MONTEREY INTERNATIONAL OPEN	USCF	MONTEREY
3-5	July	Seventh Annual Arthur B. Stamer Memorial Tournament	USCF	San Francisco
18-19	JULY	*CCCA'S USCF CLASS CHESS TOURNAMENT AT SAN JOSE	USCF	SAN JOSE
15-16	August	Oakland Chess Club's Seventh Annual Summer Tournament	CFNC	Oakland
8-9	August	***CCCA'S ADULT AND JUNIOR CHESS CHAMPIONSHIP OF CENTRAL CALIFORNIA TOURNAMENT (TRIPLE QUALIFYING POINT TOURNAMENT)	USCF	Berkeley
5-6	SEPTEMBER	*CCCA'S SECOND 1970 CLASS CHESS TOURNAMENT AT CONCORD	USCF	CONCORD
19-20	September	Four-round "Tornado" Rating Tournament	USCF	San Francisco
10-11	October	Northern California Championship	USCF	San Francisco
19-20	DECEMBER	*OAKLAND CHESS CLUB'S FIFTH ANNUAL SAN FRANCISCO BAY AREA AMATEUR OPEN CHESS CHAMPIONSHIP TOURNAMENT	USCF	OAKLAND

[The CCCA's and CCCA affiliates' USCF tournaments are capitalized, the asterisk denoting that CCCA State Championship Qualifying Points will be awarded at the tournament (to obtain them a player must display his CSCF membership card or join the CSCF at the tournament). Tournament organizers, please let us know as soon as possible of tentative or definite tournament dates, so that we may publish them.]

[We wish to thank Alan W. Bourke, Director of the Mechanics' Institute Chess Club, for sending to us the year's complete tournament listings for his club in his desire to see our "Tournament Calendar" be recognized as the official register for tournaments in Central California.--EDS.]

\*\*\*NEWS\*\*\*

Charles A. Maddigan Sweeps Bay Area Amateur

The Oakland Chess Club's Fourth Annual San Francisco Bay Area Amateur Open Chess Championship Tournament, once again plagued by showers, nevertheless drew a near-record crowd of 55 USCF players, a 31% increase over last year's version. By the end of the tournament, Charles A. Maddigan, of Oakland and an Oakland Chess Club member, had joined Dennis Fritzing, of Vacaville, Dennis Waterman, of Portland, Oregon, and David J. Forthoffer, of Berkeley, as the latest possessor of the coveted San Francisco Bay Area Amateur title--with a 5-0 score to boot--and had left with the trophy of his conquest and \$47.50. Held at the Oakland Central YMCA on the weekend of 20-21 December, the tournament also saw Philip D. Smith, of Fresno, win \$22.50 as First Class A (4½-1); James B. Shearer, of Livermore, net \$22.50 as First Class B (4-1); and Elwin C. Meyers, of Oakland, another Oakland Chess Club member and Editor of this magazine, gain \$22.50 as First Classes C/D/E (4-1).

Dr. Kent Bach, of San Francisco and Professor of Philosophy at the State College there, and Roger K. Alexander, of El Cerrito, each won a free \$5 board in the Larry Evans simultaneous exhibition, to be held at the Oakland Chess Club on 13 February, as 18th and 36th place finishers respectively. Seven of the eight CSCF members playing in the tournament gained CCCA State Championship Qualifying Points as a result of their scores.

Many well-known local chess personalities were participants: Michael Weber,

who scored a remarkable 2½-2½ against stiff Class A competition, Joseph Fhiel, energetic President of the newly-formed Caterpillar Chess Club; Nieba Jones, who travelled over 200 miles from Porterville to grace the tournament as the only female contestant; Leonard F. Trotter, CCCA Treasurer and commonest figure at USCF tournaments, who can boast of a life membership in USCF; Flyn Penoyer, Vice President of the San Jose Chess Club, a strong and consistent contender; Anthony J. DiMilo, President of the Capital City Chess Club and a USCF Director; and Raymond J. Cuneo, who is rapidly compiling qualifying Points. All in all, Oakland Chess Club officers Martin E. Morrison, Elwin C. Meyers, Richard Lee, and Raymond Ng agreed, it was one of the most successful tournaments ever held by their club.

\*

Walter S. Browne Simultaneous Stuns Hayward  
By MARTIN E. MORRISON, Scacchic Voice Editor

Promptly (!) at 8:00 p.m. on Monday, 29 December, Richard R. Shorman, President of the Hayward Chess Club and CCCA League and Publicity Director, stepped before 15 eager challengers, to present Walter S. Browne, youngest (20 years old) and newest (title awarded from the October San Juan International) International Grandmaster. After explaining the special rules for simultaneous play, Mr. Shorman aptly introduced the Brooklyn-born, Australian resident as "seeming perfectly ordinary—until you meet him over a chessboard!"

For 75 minutes the young grandmaster, in a hypnotic English graced with just a mild Australian accent, demonstrated before the 15 challengers, 13 spectators, and this editor, his recent draw over Boris Spassky, newly crowned World Chess Champion, who, he said, "played pretty poorly in this game—made a few mistakes." Afterwards he discussed his draw with Mato Damjanovic, of Yugoslavia, and then plunged into the fray with his challengers.

At the end of play the grandmaster had racked up an admirable 14-1-0 score, only Eric Salo, Hayward Chess Club Secretary, being able to defeat him.

\*

SE Bay Area Chess League Holds Annual Meeting  
By MARTIN E. MORRISON, Scacchic Voice Editor

On the afternoon of 13 December I had the pleasure of accepting an invitation to attend the San Francisco Bay Area Chess League's annual meeting at the Mechanics' Institute Chess Club in San Francisco, to act as an observer for the CCCA. Russell A. Freeman, efficient Secretary-Treasurer of the League, greeted me and introduced me to the representatives attending the meeting: Alan W. Bourke, youthful and industrious Director of the Club, Max B. Wilkerson, a USCF Director, K. Michael Goodall, also a USCF Director, and Peter Grey, who was subsequently elected Vice President and Tournament Director of the League. Frank Thornally and Mr. Freeman were re-elected President and Secretary-Treasurer respectively.

This year's league, which serves the area's Master and Expert players primarily, as the CCCA serves predominantly its Class A to E players, will consist of seven-man teams, from the Mechanics' Institute Chess Club, the Castle and UC Berkeley Chess Clubs, and an independent group of players. Play is fully USCF-rated and began on 10 January and is an eight-round double Round Robin competition, all matches being played at the Mechanics' Institute ever other Saturday night.

I came away with the thought that this area is indeed fortunate to have such industrious organizers, and I was grateful to have been a participant myself at this meeting in the effort to promote better communication between our two organizations, and even on a larger scale between the West and East Bay Areas.

\*

California Players in the Intercollegiate  
by PETER J. MESCHTER, ICLA Bulletin Editor

As usual, the University of California at Berkeley sent a team to the Intercollegiate Chess Tournament, this year held in Canada. However, the team this year was not as strong as usual, not on a par with the Berkeley teams which tied for First in 1966, came clear First by two points in 1967, and lost only in the last round to Chicago in 1968. Apparently three of the strongest Berkeley players were playing in the California State Championship, including international veteran Frank Thornally.

Still, Steven Spencer, David J. Forthoffer, and Robert Hammie upheld the Berkeley tradition fairly well. Mr. Spencer certainly played the most, if not the best, chess of anyone in the tournament. His four adjourned games ended at 1 a.m. on 30 December, and he staggered out to bed. . . . Berkeley might have done better had not Mr. Hammie been upset in round one, and had Mr. Spencer not arrived very late from New York. Of course, it could have been worse—he almost didn't get there at all!

We hope that Berkeley will be out next year to prove that their tie for 9th-10th this year was only an accident. They certainly deserve to finish higher!

\*\*\*AFFILIATE NEWS\*\*\*

If your affiliate is not listed, we have received no material concerning your activities. Please keep us informed of all your events for publication.—EDS.

EVERYMAN ATHLETIC CLUB, CHESS SECTION . . . First ventured into the realm of five-minute tournaments on 12 January, when Everyman and the Fresno Chess Club co-operated to sponsor the event at the Del Webb Townhouse. . . . USCF Expert Philip D. Smith will give a simultaneous around the 24th of February. . . .

OAKLAND . . . On 19 December held its second annual Christmas party, complete with decorated tree. A delicious cake was served, and a rousing rapid Round Robin tournament was held. David Glanville won one division, and Richard Lee defeated Janis Salna in a playoff for first place in the other division. . . . The Fifth Annual Oakland Hobby Show will be held on 11-12 April. The Oakland Hobby Council sponsors the show each year and consists of hobbyists and hobby clubs from all over the state. The show gives hobbyists an opportunity to display their arts, crafts, and skills in this colorful event. The Oakland Chess Club, which has been a member of the Council for the past four years, will participate again this year. To improve their exhibit, they are seeking unusual sets, old clocks, and other chess articles.

MONTEREY PENINSULA CHESS CLUB . . . Theodore Yudakufski won the November Round Robin Championship, then lost the crown to Michael Ewell, of Fort Ord, in the December Championship. . . . Mr. Yudakufski also won a 30/30 one-day King's Gambit tournament on 22 November over Mr. Ewell, who got revenge by taking the Monterey County Chess Championship Tournament on 6-7 December, in which 20 players participated despite an influenza outbreak in the area.

UC DAVIS CHESS CLUB . . . Gary L. Pickler won first place in the 20th Davis Rated Tournament, held from October to December 1969. Other winners in various categories: William Alexander, Sergius Von Oettingen, Moshe Shifrine, David Jacobson, Calvin Halsey, and Richard Roach.

WALNUT CREEK CHESS CLUB . . . The CCCA's Regional One-day Round-Robin Chess Tournament at Walnut Creek drew some 44 contestants. The three-round tournament, held at the Walnut Creek Recreation Center, offered 22 prizes at the tournament!

\*\*\*STATEMENT OF EDITORIAL PURPOSE\*\*\*

A few players have recently remarked to us that Scacchic Voice, being a "chess" magazine, should have more "chess" in it, meaning more games, annotations, etc., instead of news, tournament data, business proceedings, etc.

First of all, we take issue with such a limited view of chess. There is more to chess than the play; there is the organization as well. Without organization, there would be no chess, only chaos. Further, without the best organization, there would be only off-hand diversion. Many other excellent magazines, and books, exist to promote improvement in the play; Scacchic Voice, on the other hand, directs itself principally to bettering that other too frequently neglected aspect of chess, the organization.

Scacchic Voice's policy is clearly stated in its subtitle on the front cover. First, it is a "chess news magazine," i.e., it provides its readers not with material on the play, readily available elsewhere, but rather with critically needed news and informational material not available from any other source. Second, it is the "organ of the CCCA," i.e., it contains official material pertaining to the CCCA, as business proceedings and financial reports, without the publication of which the CCCA would, as any other organization, become autocratic and secretive, responding not to the interests of its members, but to selfish and personal interest.

We shall, however, beginning with the next issue, expand our coverage of "the play" by the addition of a number of unannotated local games. We hope that this will be some legitimate compromise between those who want more "chess" and the basic principles and necessary functions of Scacchic Voice to which we subscribe.

\*\*\*CCCA (TEAM) CLASS CHAMPIONSHIPS\*\*\*

By EVERETT L. MC NALLY, CCCA Club Coördinator

Each CCCA affiliate in each city will be asked to conduct a tournament to determine the city's champion in each class (e.g., Class A Champion of Hayward). City Class Champions of each class will then form a team and play against teams from the other cities in their county to determine the county's champion in each class (e.g., Class A Champion of Alameda County), etc. I am currently conducting the Class Championships for the City of Hayward and shall be happy to assist other affiliates in organizing their City Class Championships. Contact me at 23716 Lynn Street, Hayward 94541.

\*\*\*BUSINESS PROCEEDINGS OF THE CCCA\*\*\*  
 Saleh Mujahed  
 CCCA Secretary

The annual meeting of the CCCA was held on Friday, 9 January 1970, in the Music Room of Lincoln Elementary School, 225 Eleventh Street, Oakland (the Oakland Chess Club's quarters). The meeting was called to order at 8:02 p.m. by the Secretary, Martin E. Morrison, the office of Chairman being vacant. It was adopted by general consent that the Secretary serve as chairman pro tempore.

The total attendance for the meeting was as follows: Hans Poschmann (Fremont CC); Vance Carpenter, Jerome Friedman, Everett L. McNally, Richard R. Shorman (Hayward CC); Harold L. Barnett, Wesley A. Nelson (Livermore CC); Craig Barnes, David Glanville, Frank V. Leffman, Charles A. Maddigan, Elwin C. Meyers, Martin E. Morrison (Oakland CC); Dennis Claudio, Leonard F. Trottier (Richmond CC); Saleh Mujahed (Walnut Creek CC)—6 of 25 affiliates, 15 members.

It was adopted that the minutes of the previous (12 September) meeting be approved as published in Scacchic Voice, CCCA's official organ.

It was adopted THAT THE WESTERN ADDITION CHESS CLUB, UPON THE APPLICATION OF COLBERT SMITH, DIRECTOR, AND THE EVERYMAN ATHLETIC CLUB, CHESS SECTION, UPON THE APPLICATION OF GEHALD R. CRUMLEY, DIRECTOR, BE AFFILIATED TO THE CCCA, AND THAT THE SAN QUENTIN AND BERKELEY YMCA CHESS CLUBS, SINCE THEY HAVE BECOME INACTIVE FOR A TIME UNDER ADMINISTRATIVE REORGANIZATION, BE TEMPORARILY SUSPENDED FROM ACTIVE AFFILIATION.

The Secretary, Mr. Morrison, gave his annual report.

The Treasurer, Mr. Trottier, gave the following:

REPORT OF THE TREASURER OF THE CCCA

FOR THE PERIOD 9 SEPTEMBER 1969 TO 9 JANUARY 1970

Receipts

Balance on hand 9 September 1969 .....	\$202.89
Bimonthly assessment of affiliates* .....	\$137.45
Fines for late assessment payments .....	6.00
USCF memberships for transmission to USCF .....	135.50
Payment for rating individual match .....	1.00
League Prize Fund .....	162.00
Walnut Creek CC Co-sponsorship Fee .....	5.00
Clock sales .....	<u>227.48</u>
	<u>\$744.43</u>

\$877.32

Disbursements

USCF memberships transmitted to USCF .....	\$135.50
Paid for rating individual match .....	0.60
League expenses, postage (subtracted from League Prize Fund) .....	13.26
CCCA emblem, motto, and certificates .....	14.50
To Treasurer for postage .....	6.05
To Secretary for postage and miscellaneous .....	5.00
SCACCHIC VOICE expenses .....	78.10
Printed stationery .....	32.40
Loan for February CCCA tournament .....	15.00
To David L. Amkraut, CCCA State Championship Qualifier, for travel expenses .....	15.00
Clock purchases and duty .....	197.98
Interest on clock loan .....	<u>5.25</u>
Balance on hand 9 January 1970** .....	<u>358.88</u>
Total .....	<u>\$877.32</u>

\*The Oakland CC deducted \$4.50 from their assessments as one-half the cost of the post office box shared, by CCCA resolution, through 30 September 1970.

\*\*Includes League Prize Fund and February-March SCACCHIC VOICE expenses.

Total CCCA membership: 371.

Frank V. Leffman gave the annual report of the League Directors.

Elwin C. Meyers gave the annual report of the Editors.

Mr. Morrison reported the recommendation of the Executive Board that Article II, Section i (c), and Article IV, Section iv (e), of the CCCA Bylaws be struck out. It was adopted that the action on the recommendation be postponed until the next regular meeting, by which time Mr. Nelson would have reported the results of a poll of the members and affiliates on their feelings.

Mr. Trottier, Chairman of the Standing Clock Committee, reported that clock sales had totaled \$227.48, less \$203.23 for purchase, interest on the loan, and duty, for a profit of \$24.25, with two clocks remaining to be sold.

Mr. Morrison, Chairman of the Standing Tournament and Club Relations Committee, gave the annual report for that committee.

Mr. Poschmann reported his Perpetual Cup resolution, which was amended and finally adopted as follows: THAT THE CCCA SPONSOR A CCCA CHAMPIONSHIP TOURNAMENT TO BE CONDUCTED AS FOLLOWS: (1) PLAY SHALL BEGIN AT THE CLUB LEVEL, PREFERABLY BASED ON A SPECIAL CLUB KNOCK-OUT TOURNAMENT OR A CLUB CHAMPIONSHIP TOURNAMENT, EACH AFFILIATED CLUB HAVING THE RIGHT TO NOMINATE ITS CLUB CHAMPION AND, IN CASE HE IS NOT ABLE TO CONTINUE, A SUBSTITUTE; THE CCCA CHAMPIONSHIP ADMINISTRATOR MAY CHOOSE A DELEGATE IF A CLUB FAILS TO; (2) THE CCCA CHAMPIONSHIP ADMINISTRATOR SHALL THEN ARRANGE KNOCK-OUT PLAYOFFS FOR FINALISTS, THEN KNOCK-OUT PLAYOFFS FOR CCCA CHAMPION; (3) THE CCCA CHAMPIONSHIP ADMINISTRATOR SHALL BE HANS POSCHMANN, WHO SHALL HAVE FULL POWER FOR ADMINISTRATION OF THE TOURNAMENT; (4) THE OVERALL WINNER SHALL RECEIVE A PLAQUE TO BE MADE AND ENGRAVED WITH MONEY FROM THE CCCA GENERAL FUND BY THE CCCA CHAMPIONSHIP ADMINISTRATOR, TO INCLUDE THE WINNER'S CLUB AND TO BE DISPLAYED FOR A YEAR AT THE CLUB.

Elections were then held. The following were elected: Martin E. Morrison, as Chairman; Saleh Mujahed, as Secretary; Leonard F. Trotter, as Treasurer; Wesley A. Nelson, as Rating Administrator; Frank V. Leffman and Richard R. Shorman, as League Directors; Martin E. Morrison and Elwin C. Meyers, as Editors; Richard R. Shorman and Byron Delaney, as Publicity Directors.

It was adopted that the meeting recess at the call of the chair. The chair declared the meeting recessed at 10:05 p.m. and called it to order again at 10:35 p.m.

It was adopted THAT THE RESOLUTION ESTABLISHING THE ASSISTANT PUBLICITY DIRECTORS BE REPEALED, AND THAT INSTEAD AREA VICE CHAIRMAN BE ELECTED IN THE SAME WAY AS OFFICERS; THAT THE AREA VICE CHAIRMEN NOT BE CONSIDERED OFFICERS AND NOT HAVE ANY PARLIAMENTARY DUTIES; THAT THE AREA VICE CHAIRMEN'S DUTIES BE TO PROMOTE THE CCCA IN THEIR AREAS AND TO REPORT TO THE CHAIRMAN THE DESIRES OF THE CHESS PLAYERS OF THEIR AREAS; THAT AREA VICE CHAIRMAN BE ELECTED FOR THE SACRAMENTO-STOCKTON AREA, THE NORTH BAY AREA, THE CENTRAL BAY AREA, THE SOUTH BAY AREA, AND THE CENTRAL VALLEY AREA.

The following were elected: Sergius Von Oettingen (Sacramento-Stockton Area), Steven Kornher (North Bay Area), Jerome Friedman (Central Bay Area), William T. Adams, (South Bay Area), and Chris A. Fotias (Central Valley Area).

After amendments a resolution was finally adopted as follows: THAT IN THE USCF CATEGORY OF THE CCCA 1969-70 LEAGUE, A PRIZE BE ADDED FOR THE TOP UNRATED PLAYER EQUAL TO THE OTHER INDIVIDUAL AWARDS.

It was adopted THAT THE MATTER OF A CCCA BANQUET BE REFERRED TO THE TOURNAMENT AND CLUB RELATIONS COMMITTEE FOR FINAL ACTION.

It was adopted THAT THE CCCA'S NEXT REGULAR MEETING IN APRIL, BE HELD ON FRIDAY, 3 APRIL, AT 8:00 P. M., AT LINCOLN ELEMENTARY SCHOOL, 225 ELEVENTH STREET, OAKLAND (THE OAKLAND CHESS CLUB'S QUARTERS). Various amendments to this motion were lost.

It was lost that the per capita assessment of CCCA affiliates be readministered from twenty cents bimonthly to thirty cents quarterly, payable (after 5 February, to be the last bimonthly assessment) on 30 March, 30 June, 30 September, and 31 December, the amount to be pro-rated for new affiliates.

It was adopted THAT BYRON DELANEY BE ADDED TO THE STANDING TOURNAMENT AND CLUB RELATIONS COMMITTEE.

It was adopted THAT THE TREASURER DISBURSE ANOTHER \$10 TO MR. AMKRAUT, THE CCCA STATE CHAMPIONSHIP QUALIFIER, FOR EXPENSES.

It was adopted THAT ALL GAMES PLAYED IN THE LEAGUE BE SENT FOR RATING, EVEN IF THERE WAS AN IMPROPER ALIGNMENT ON THE BOARDS.

It was adopted that the meeting adjourn. The chair declared the meeting adjourned (sine die) at 11:37 p.m.

\*\*\*ACCUMULATED CCCA STATE CHAMPIONSHIP QUALIFYING POINTS\*\*\*

Points from the Oakland Chess Club's Fourth Annual San Francisco Bay Area Amateur Open Chess Championship (20-21 December) and the CCCA's Regional One-day Round Robin Chess Tournament (3 January) have been added in. For upcoming tournaments awarding qualifying points, see page three.—EDS.

Jude F. Acers	5.75	Raymond J. Cuneo	4.75	Gary L. Pickler	3.50
Philip D. Smith	3.38	Garland L. Brinkley	3.00	Anthony J. DiMilo	3.00
William F. Gray, Jr.	3.00	Benjamin L. Gross	2.25	Stephen Kornher	2.25
Wayne P. McClintock	1.89	Flyn Penoyer	1.69	Michael Ewell	1.25

- 2 -

\*\*\*INTERPRETATIONS MADE BY THE PERMANENT COMMISSION  
OF THE FIDE FOR THE LAWS OF THE GAME\*\*\*  
Translated by MARTIN E. MORRISON

Scacchic Voice Editor; United States Chess Federation Director

Copyright Martin E. Morrison 1969. All rights reserved; no part of this work may be reproduced without the permission of the translator, except for brief quotations.

[This is the first complete English translation published in the United States of the Interpretations of the official, international Laws of the Game of Chess made by the aforementioned Commission of the FIDE (World Chess Federation). Many enlightening clarifications of the more general Laws are contained in these Interpretations. Since an easily accessible English translation has not been available up to this time, I hope that my efforts will be a valuable aid in this critical area to chess officials and players alike.

[This unofficial translation is meant to be as close a rendering as reasonable English allows of the official French edition (Stockholm, 1966). I should here like gratefully to acknowledge the help of M. Tringårdh, Secretary to FIDE President Folke Rogard; Fred Cramer, FIDE Vice President for the United States; C. J. S. Purdy, whose translation (in Laws of Chess, Sydney: Chess World, 1968) of some passages has been of much use to me; Robert Eldridge, James A. DiDomenico, Kenneth M. Harkness, James R. A. Schroeder, Dr. George V. D. Tiers, dedicated chess organizers all, whose correspondence with me on chess laws has greatly aided my understanding of the laws; and finally USCF President Dr. Leroy Dubeck and Executive Director Lt. Col. Edmund B. Edmondson, who have consistently demonstrated in their friendly contact with me the USCF's dedication to the chess players of the United States in this area of laws, as in so many others.---MEM/

\*  
General Observations (August 1958)

The Laws of Chess cannot--should not--cover every possible situation that might occur during play, nor do they cover every question of organization. In most cases that are not precisely regulated by an Article of the Laws, a correct decision can normally be found by applying, by analogy, the provisions for cases of a similar type. As for the Director's duties, it can only be assumed that in most cases he has the necessary competence, sound judgment, and complete objectivity. Too detailed a set of rules would deprive the Director of his freedom of judgment and could prevent his finding the solution dictated by fairness and the circumstances of the particular case, since it is obviously impossible to foresee every possibility. The decisions of the Commission below are enounced, in the majority of cases, founded on the general principles expounded in this introduction.

Interpretations 1958-1964

1. (August 1958) Should the opponent be absent, a player who wishes to adjust one or more pieces may do so after giving notice to the Director.
2. (September 1963) If a game is submitted for adjudication, it can only be considered concluded when the Director has rendered his decision.
3. (August 1958) This stipulation must, in particular, be applied if, in the course of a game, it is decided that the game has been commenced with an inversion of the colors.

(October 1960) If a claim founded on such an inversion of the colors is made only after the end of the game, the claim must be rejected.

4. (August 1958) As a result of the request of a federation, the Commission has pronounced on the following case. By his last move before the time control, a player mated his opponent, but before he stopped his clock, it was noted that the flag of his clock indicated the passing of the time limit. On the basis of the evidence, it must, moreover, be supposed that the passing of the time limit had not yet taken place at the moment when the player had released from his hand the mating piece.

The question has been posed to find out whether the stipulation of Article 14.4--enunciating that "the last move is not considered as made until after the player has stopped his clock"--is to be applied also in the case where the last move was a mating move made on the chessboard in conformity with Article 7, after the passing of the time limit.

After having cited the tenor of Article 7a, 11.1, and 14.4 of the Rules of the Game, the Commission has pronounced as follows:

"In the examination of this question, it must be remembered that 'The Laws of the Game' is divided into 'General Laws' (Articles 1-12) and 'Additional Rules for Competitions' (Articles 13-19). In the 'Additional Rules for Competitions' have been stipulated the additions to the 'General Laws' which have been found necessary, in order to give satisfaction to the special exigencies of competitions. In the 'General Rules,' it is enounced that the execution of a move is achieved 'when the player's hand has quitted the piece,' and that is a formal definition as concerns the game per se. The definition cited is not rendered invalid by Article 14.4 where it is only said that 'the last move is not considered as made until after the player has stopped his clock.' The reason why,



in a particular situation, a move already completed must only be 'considered' as such after an additional act, is only that, in the majority of cases, an effective control cannot be applied exactly at the moment when the player completed his move on the chessboard, but when his clock is still in motion.

"In the particular case at hand, it must also be remembered that 'the last move' was a mating move, by which, according to Article 11, the game was ended and 'won for the player who has mated the opponent's king' in a way that—from a physical point of view—it was unimportant for the opponent whether the one or the other of the clocks was in motion after the end of the game.

"Conclusion: The game had been won by the player who executed the mating move."

5. (October 1960) As a result of various requests for an interpretation of Article 12.3 of the Laws of the Game, the Permanent Commission has pronounced as follows:

"A game cannot be declared drawn on the basis of Article 12.3, unless the same player has the move after each of the three appearances of an identical position on the chessboard.

"The right of claiming the draw belongs only to the player

a) who has the possibility of playing a move leading to the repetition of the position, provided that he indicates the move and claims the draw before executing it;

b) who is due to reply to a move leading to such a repetition of the position, provided that he claims the draw before executing his move.

"If the claim is proved to be incorrect (Article 17a.2) and the game continues, the player having indicated a move according to sub-article 2a is obliged to execute the move on the chessboard."

6. (August 1958) This sentence looks only to the possibility of indicating in regulation of the tournament or match certain positions for which the number of 50 moves can be increased.

The FIDE must not take the responsibility in introducing in the Laws the details which, as a result of future investigations, could be proved to be incorrect.

7. (September 1959) As a result of various requests for an interpretation of Article 13, the Permanent Commission has pronounced as follows:

"The words 'extremely pressed for time' (time trouble) contained in Article 13.2 cannot be precisely defined. It is the Director's task to decide—after considering the time on the clock, number of moves to be made, and the character of the position at the moment—whether these words apply to a player's situation. The Director's opinion decides.

"If the Director thinks the words do not apply, he may require the player to write down the moves in conformity with Article 13.1. If the player refuses, the Director may rule that the player loses the game under Article 17.4.

"If the Director instructs a player to write down the moves as described above, and the player declares that he cannot fill in the missing moves without consulting his opponent's score-sheet, the request for the sheet shall be made to the Director, who will judge whether the player's form can be completed before the time control without embarrassing the opponent. The latter shall not refuse his score-sheet for two reasons: the record belongs to the Organizers of the Tournament, and the player who is to complete his record shall do so on his own time.

"In all other cases, the score-sheets can only be completed after the time control. There are then two possibilities;

a) one player alone has not completed his record—in which case he shall do so on his own playing time;

b) both players have incomplete records—in this case, both clocks shall be stopped until the two records are completed, if necessary with the help of the Director, who shall beforehand have recorded the position existing at the moment of the interruption. If, in case a), the Director sees that the player's score-sheet, although filled in, will not help in reconstituting the game, he shall act as in case b)."

8. (August 1958) This article must be applied with all its rigor, also in the case where the player who has the white pieces is absent, as is his opponent.

9. (August 1958) As a result of a request for precision on the verification of evident defects of a clock, the Permanent Commission replied by referring to the general principles enounced in the General Observations above.

10. (August 1958) In the case where a player will have placed within the envelope a move, the real significance of which it is impossible to establish, the stipulation of Article 17.3 is applicable.

11. (August 1962) As a result of a request for interpretation, the Permanent Commission pronounced as follows:

"The stipulations of Article 17.2 of the Rules of the Game and of the final sub-article of Article 17 enouncing that a game is lost by players who arrive at the

chessboard more than one hour late are applicable as well at the commencement of a game as at the time of the resumption of an adjourned game. According to the opinion of the Commission, there cannot be any difficulty in applying this law in the situation of the resumption of an adjourned game, where the player having written down his move in the envelope is absent, whereas his opponent presents himself at the chessboard. If he is still absent at the end of one hour, the game is lost by him, on condition that it has not been decided before by one of the three following circumstances:

- a) the absent player has won the game by the fact that the move written down mated;
- b) the said player produced a drawn game by the fact that the move written down brought stalemate; or
- c) the player present at the chessboard has lost the game according to Article 17.1 by exceeding his time limit.

"This declaration of the Commission only represents, completely, a verification of the evident fact that what occurs as a result of an action or an omission after the termination of a game is unimportant."

12. (August 1958) As a result of a request for the precision of Article 17.3, the Permanent Commission replied by referring to the general principles enounced in the General Observations above.

13. (November 1964) This clause must be applied, in particular, in the case where a player who has proposed a draw repeats his proposal without reasons manifestly well founded, before his opponent has, in his turn, availed himself of the right of proposing a draw.

14. (August 1958) As a result of certain requests referring to the general organization of competitions, the Permanent Commission has pronounced as follows:

"A federation has asked the integration with the Rules of the Game some of the following prescriptions, whose application in competitions is customary:

- 1st) before the beginning of the last round of a competition, all unfinished games of the preceding rounds must be completed;
- 2nd) when a player who has not played half of his games quits a tournament, his results are annulled. If he has played the majority of his games, he loses by his blameworthy action all his other games. His unfinished games are, in this event, considered as played.

"The Commission, on recognizing that these prescriptions are of a certain utility for the organization of competitions in most cases, considers that there is no place to introduce them into the Rules of the Game, in order to allow the organizers every liberty for taking possibly some other measures motivated by the circumstances.

"The Commission considers likewise that there is no place to include in the Rules of the Game some prescriptions concerning an appeal against the decision of a Director. Yet, when it is a question of an international tournament, it is, without doubt, advisable to have, with regard to the competition, a panel charged with settling the issues in the case of an appeal against the decision of a Director

"A federation has stressed that it would be desirable to have a regulation concerning the procedure to follow when a player, or a group of players, arrive late for a competition.

"The Commission considers that it must keep to the general principles of the introduction. If the delay is due to a cause for which the player or team is not responsible, it must follow from the principles of chess fellowship, at least in international tournaments, that some concessions should be granted as far as is possible without creating eventual difficulties to other players or the organization itself."

\*

Handy reprints of this article (CCCA Publication No. 3) are available at 20¢ from: Editors, Central California Chess Association, P. O. Box 1822, Oakland, CA 94604.

\*\*\*FROM THE OFFICIAL RELEASE OF THE USCF  
ON THE 1969 UNITED STATES CHAMPIONSHIP AND ZONAL TOURNAMENT\*\*\*

Samuel Reshevsky, of Spring Valley, New York, won the 20th United States Chess Championship Tournament with a score of 8-3. William G. Addison, of San Francisco, played fine chess throughout. . . . His 7½-3½ put him all alone in second place.

A sample game: William G. Addison vs. Robert Byrne, King's Indian Defense. 1 P-Q4, N-KB3; 2 P-QB4, P-KN3; 3 N-QB3, B-N2; 4 P-K4, P-Q3; 5 N-B3, O-O; 6 B-K2, P-K4; 7 O-O, N-B3; 8 B-K3, R-K1; 9 PxP, PxP; 10 QxQ, RxQ; 11 B-N5, R-B1; 12 KR-Q1, B-N5; 13 QR-B1, P-KR3; 14 B-K3, KR-Q1; 15 P-KR3, BxN; 16 BxB, N-Q5; 17 N-N5, N-K1; 18 NxN, PxN; 19 B-B4, P-QB3; 20 R-Q3, P-KN4; 21 B-N3, R-Q2; 22 P-B5, R/1-Q1; 23 B-N4, R-K2; 24 P-B3, B-K4; 25 BxB, RxB; 26 R-B4, N-N2; 27 R/4xP, RxB; 28 RxB, RxRP; 29 P-KR4, R-N4; 30 R-Q8ch, K-R2; 31 P-QN3, N-K3; 32 BxN, PxB; 33 P-R5, P-N5; 34 R-Q7ch, K-N1; 35 PxP, R-N5; 36 K-B2, RxKP; 37 RxP, P-R4; 38 R-QR7, R-K4; 39 K-B3, N-QR4; 40 K-B4, R-QN4; 41 adjourned, but Black resigned without resuming play.

\*\*\*GAMES COLUMN\*\*\*

By RICHARD R. SHORMAN, Scacchic Voice Games Columnist  
(CCCA League and Publicity Director)

Event: Third Annual San Francisco Open Chess Tournament

Date: 16 November 1969

White: Carroll Capps, San Francisco

Black: Erik Osburn, San Jose

		Opening: Scotch Game					
1 P-K4	P-K4	12 Q-R-K1	B-K3*c	23 P-N4	R-K3*e	34 B-B3	Q-K7*h
2 N-KB3	N-QB3	13 N-K2	P-KR3	24 PxP	Q-B3	35 RxP	PxR
3 N-B3	N-B3	14 B-B1	B-Q3	25 B-N2	R-N3	36 QxKBP	Q-Q8ch
4 P-Q4	PxP	15 P-KR3	N-Q2	26 R-Q1	RxR	37 K-R2	K-B1
5 NxP	B-N5	16 N-Q4	N-K4	27 QxR	P-B3	38 QxPch	K-K2
6 NxN	NPxN	17 Q-Q1	NxB	28 P-QB4*f	PxP	39 Q-B6ch	K-B1
7 B-Q3	P-Q4	18 QxN	B-Q2	29 R-Q3	Q-B2	40 Q-R8ch	B-N1
8 PxP	PxP	19 N-B5	Q-B3	30 Q-KB3	B-Q1*g	41 Q-N7ch	resigns
9 0-0	0-0	20 NxB	QxN	31 Q-Q5ch	B-B2		
10 B-KN5	P-B3*a	21 R-K3	Q-R-K1	32 Q-Q4	Q-K2		
11 Q-B3	B-K2*b	22 R-N3	P-QB4*d	33 P-B3	R-B1		

\*a: Modern theory regards 10...B-K3 best, freeing Black's QBP for a possible one step advance into the center.

\*b: Adequate, if carefully handled, but 11...B-Q3! gives Black the initiative after 12 BxN, QxB; 13 QxQ, PxQ; 14 N-K2, P-QB4; 15 P-QB4, PxP; 16 BxP, B-K4 (Alexander vs. Gligorich, Hastings, 1956/7).

\*c: According to Euwe, 12...P-KR3! guarantees a draw by perpetual check: 13 BxP, PxB; 14 Q-K3, P-Q5; 15 QxRP, Q-Q3! (Paul Keres, Dringspiel bis Knigsgambit, Berlin, 1968, p. 114).

\*d: White takes excellent advantage of this inaccuracy. Better is an immediate 22...R-K3 or 22...R-K5.

\*e: Of course not 23...PxP?; 24 Q-Q4.

\*f: Another fine move, returning the pawn for increased pressure.

\*g: Forced, as 30...R-B2 loses to 31 Q-R8ch, K-R2; 32 Q-Q5. Despite bishops of opposite colors, White has a winning attack.

\*h: Allows a brilliant finish, but passive defense does not avert defeat, e.g., 34...B-K3; 35 B-R5! (or 35 B-N4), and Black is in virtual zugzwang, 35...K-B2; 36 R-Q7!, BxR; 37 PxB, R-Q1; 38 QxQBPch, K-B1; 39 BxR, QxB; 40 Q-B5ch, K-B2; 41 QxP.

\*\*\*CHESS IS MY HOBBY\*\*\*

By JAMES B. REYNOLDS, Scacchic Voice Analysis Columnist

TOURNAMENT PRESSURE surely is evident in the following game. The players in this game played well, though the kibitzers could find many "ifs." Even the Master trying to analyze would find many moves on which to comment with several suggested other moves to make and with various "if" continuations. Going over the game, I could just feel the pressure under which each player seemed to be. Let's conclude that the winner ended the game beautifully, barring all "ifs."

Event: CCCA's USCF Class Tournament at Concord

Date: 6 September 1969

Division: Master/Expert/Class A

White: Raymond J. Cuneo, Piedmont

Black: Gary L. Pickler, Danville

Opening: Albin Counter Gambit

1 P-Q4	P-Q4	10 P-K3	N-K4	19 KR-Q1	P-QN3
2 P-QB4	P-K4	11 P-QR3	B-K2	20 B-B3*e	KR-Q1
3 PxKP	P-Q5	12 P-R3	NxNch	21 P-QR4	N-K5
4 N-KB3	N-QB3	13 NxN	BxN	22 P-R5	P-QN4
5 QN-Q2	P-B3*a	14 BxB	K-N1	23 B-Q4	R-KB1
6 PxP*b	QxP	15 B-Q2	Q-K3*d	24 QxQP	RxBK!
7 P-KN3	B-KN5	16 Q-N3	P-B3	25 B-K5ch	QxB
8 B-N2*c	0-0-0	17 K-N2	N-B3	26 QxR	RxBPch
9 0-0	P-Q6	18 B-QR5	R-Q2	27 resigns	

\*a: More in line with Black's Gambit is 5...B-K3, the idea being rapid development, Q-Q2 and 0-0-0 following. With the text, he still does develop quickly.

\*b: Why not let Black have his pawn back? Why help him develop? Go ahead with 6 P-KN3. Even 6 P-K3 doesn't look bad—but one of those "ifs."

\*c: Since Black is ahead in development, I'd gamble with 8 N-K4; then there's possibly 8...Q-B4; 9 Q-Q3—another "if."

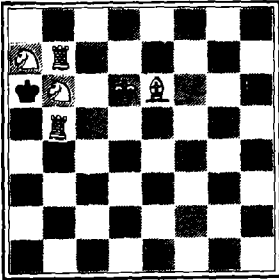


Gary Pickler

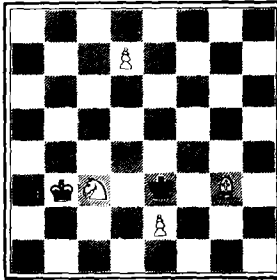
\*d: Of course not 15...QxP, as 16 R-N1, and Black is in serious trouble.  
 \*e: White takes away what little pressure he has on Black with this move. Better seems to be 20 R-Q2, building up pressure on Black's advanced QP. After all, Black's NP is pinned at the moment.

\*\*\*MATING MAZE\*\*\*

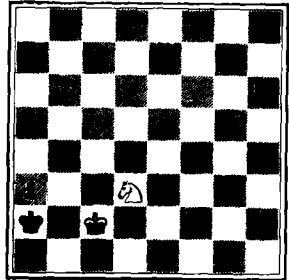
By RICHARD LEE, Scacchic Voice Problems Columnist



No. 63  
 White mates in two.  
 Otto Wurzburg (?)  
 Original? 1943?



No. 64  
 White mates in two.  
 Ivar Godal  
 Nagasinet for Alle 1945



No. 65  
 White mates in three.  
 Otto Dehler  
 Deutsche Schachzeitung 1924

\*  
Problem Solving Contest for All Classes

The above problems are moderately challenging, but should be able to be solved even by a Class E player in an hour or so. All readers will find entertainment in taking a little time in solving them—and may win a prize. All entries with the correct solutions for all three problems will be eligible in a drawing for the prize Volume 6 of the Chess Informant, which contains over 1000 games and positions annotated by such chess greats as Fisher, Larsen, and Portisch. International Grandmaster Robert J. Fischer is said to carry a copy of this book with him at all times. The value of the book is \$5.50. Entries should be sent before 15 February to this magazine's address (on page 3). The first two problems are for White to play and mate in two moves; in both cases, there are two variations for Black after White's key move. Give White's mating response to both of Black's replies. On No. 65 only one line of play is needed for full credit.

\*  
 SOLUTIONS TO LAST ISSUE'S PROBLEMS: No. 60, B-B2, N/4xR; No. 61, Q-B3; No. 62, send in for full solution. Congratulations to Kenneth Jackson, Jr., of Union City, Gary MacLeod, of Fremont, and Wayne Meadows, of San Pablo, for correct solutions to last issue's set of problems.

\*\*\*CCCA 1969-70 LEAGUE: INTERIM RESULTS\*\*\*  
 By FRANK V. LEFFMAN and RICHARD R. SHORMAN, CCCA League Directors

USCF Category,	Division I				Tot.
	R 1	R 2	R 3		
Livermore-A	1	1	Bye	3	
DVI-B	1	1	1	2½	
Hayward	1	Bye	0	2	
DVI-A	Bye	0	0	1	
San Jose	0	-	1	1	
Fremont	0	1	-	1	
Livermore-B	0	-	-	0	
Independent Category,	Division I				Tot.
	R 1	R 2	R 3		
Livermore	1	1	1	3	
Oakland	Bye	1	1	3	
Alameda-B	1	Bye	0	2	
Orinda	1	0	1	2	
Fremont	0	1	0	1	
Newark	0	0	Bye	1	
Alameda-A	0	0	0	0	

USCF Category,	Division II				Tot.
	R 1	R 2	R 3		
Mech. Inst.	1	Bye	1	3	
Concord	Bye	1	-	2	
Oakland-B	1	1	-	2	
Oakland-A	0	1	-	1	
Orinda	1	0	0	1	
Alameda	0	0	-	0	
Bechtel	0	0	-	0	
Independent Category,	Division II				Tot.
	R 1	R 2	R 3		
Richmond	1	1	-	2	
Santa Rosa-A	1	-	-	1	
Santa Rosa-B	1	0	-	1	
Vallejo	0	1	-	1	
Martinez	0	-	-	0	
Walnut Creek	0	0	-	0	

\*\*\*COMMENTS ON THE 1970 CALIFORNIA CHESS CHAMPIONSHIP\*\*\*  
By DAVID L. AMKRAUT, CCCA Qualifier

(The following reflects my own opinions only and not necessarily those of anyone else.)

Charles Henin, scoring  $4\frac{1}{2}$  of 6, is the new California State Champion, winning \$250. David Blohm, last year's winner, was second with 4, winning \$150; George Kane came third with  $3\frac{1}{2}$ , winning \$100; David L. Amkraut, fourth with 3; and Kim Commons, Aki Kanamori, and Tibor Weinberger tied for fifth through seventh with 2 apiece. The tournament finished with Alan Baisley, William G. Addison, Norman Wood, and Tibor Weinberger all out for one reason or another—more about that below.

Although there were a few fine games (especially Wood's win against Blohm and Kane's against Kanamori), most of the play was surprisingly ragged. Weinberger dropped a piece to Kane on the eleventh move. Kane threw a bishop away against Henin in a level position and later missed chances against Commons. Blohm missed possible wins against Henin (in the final round) and Commons. Amkraut made numerous blunders against Kanamori, but got the last laugh as the latter overlooked a threat of mate. Against Henin, however, his blunder of a piece in a strong position cost him a vital point. Interestingly, there were only three draws in the entire tournament, and there were few endgames; many games were decided quickly.

If play was surprising, the tournament directing was even more memorable. To begin with, the final schedules were mailed out rather late. When we got to El Segundo, we learned that Mr. Gordon S. Barrett, the tournament director, had delegated a subordinate to direct on the first day of the final rounds there—most unusual. When Addison and Wood forfeited their games in the fourth round, the substitute director declared both were out of the tournament. Finis—or so we thought. Alan Baisley, incidentally, was out already because of illness.

When Wood showed up the following day (he had apparently misunderstood the tournament bulletin and forfeited three rounds), Mr. Barrett, without consulting the players, simply reversed the previous "final" ruling, calmly reinstating Wood in the tournament, and changed the revised schedule, which would have allowed everyone to finish by late Saturday night, and carved an eighth prize for him out of the prize fund (out of the bottom prizes, leaving the top ones untouched, without, incidentally, notifying anyone of the change until he was asked about it).

When some participants vigorously questioned these actions and others, Mr. Barrett spoke to Isaac Kashdan by telephone. It was pointed out, among other things, that from the fourth round, everyone had played with the understanding that Wood was out. Blohm, for example, had drawn with Commons in a position that offered winning chances, under the belief that his previous loss to Wood was nullified by the latter's ejection. Mr. Kashdan said that this was unfortunate, but Mr. Barrett's decision stood. Wood, however, withdrew from the tournament at that point.

Then another interesting decision occurred. Tibor Weinberger had just forfeited an adjournment against Blohm and his game against this writer, and was apparently not planning to complete his schedule, so he was apparently ejected from the tourney, but the CSCF took his prize money back in the treasury. This struck several players as odd. If Weinberger were considered to be in the tournament to the end, then of course he should receive his prize, and if he did not receive his prize, he should have been considered out of the tournament. What happened was that he did not receive his prize, but his games counted, and the CSCF kept his money, which ought to have been redistributed in the prize for of which it was a part.

I make no attempt at completeness above, but I hope my remarks convey the impression I received of the manner in which this entire affair was run. Such disorganization, such haphazard and capricious decision-making waste every player's time and energy and demean what ought to be a valuable title—that of California State Champion. I certainly hope next year's qualifiers get the opportunity to play in a fairer and more orderly event. They deserve it.

\*\*\*A REPLY TO DAVID L. AMKRAUT ON THE 1970 CALIFORNIA CHESS CHAMPIONSHIP\*\*\*  
By GORDON S. BARRETT, Championship Director

It seems to be the vogue these days to criticize direction of tournaments, and sometimes with good reason; however, Mr. Amkraut's opinions show such lack of logic, judgment, and knowledge of facts, that one can only wish he had spent more time on research before joining the trend.

Firstly, the "subordinate" tournament director who directed the Championship on Friday was none other than H. Darrell Rader, President of the Southern California Chess League (SCCL), Hall of Fame nominee, and one of only three CSCF-

accredited tournament directors in Southern California (the others being Isaac Kashdan and myself). Mr. Amkraut finds the occurrence of such substitution most unusual. Maybe he should learn about some facts of life, such as responsibilities of adults which may include unavoidable business engagements.

Mr. Hader's rearrangement of schedule upon establishing that there were three absentees in the finals was a gesture of goodwill, based on the fact that players who normally miss two opening rounds in such an event will indeed be absent for the rest of the schedule. His decision in this matter was for the convenience of the players, and should not have been interpreted by anyone as so "final" as to be unchangeable in case of changed circumstances.

The circumstances did change, when Norman Wood turned up on Saturday intending to play--which, as a bona fide qualifier, he had the perfect right to do, especially since his forfeiting any games in a round robin did not affect the pairings. Even so, this tournament director consulted other League officials, discussing the issue at length, before announcing Mr. Wood's participation in the tournament. (Mr. Amkraut's implication that the players should have been consulted is absurd. A tournament director's job is to make decisions based on laws, rules, facts, logic, precedents, and common sense, not on opinions of emotionally involved players who would logically support decisions furthering their own ends--and especially in this case, would provide split opinions.)

Mr. Amkraut's grounds for protesting Mr. Wood's participation are illogical. (1) Rescheduling of games--the players came to Los Angeles to play six rounds on three days, so what is the problem? (2) Prize distribution--if Mr. Amkraut would have done a little homework before entering the tournament and before making his opinions public, he would have learned that all participants in the State Championship are eligible for a prize. True, Mr. Wood's entry meant cutting some of the seven prizes to create an eighth. (Incidentally, all but the two top prizes were adjusted for this purpose), but players still benefited from having the fund cut from ten to eight prizes. (3) Game tactics--that players would have used different tactics had they expected an extra round; maybe so, but this applies equally to all players. Our impression of the FIDE's decision in this regard is that a player plays his best in all games, regardless of who is other opponents may or may not be. -- EDS. ]

What is truly surprising in Mr. Amkraut's report is the quick, smooth gliding over Isaac Kashdan's upholding of the tournament director's decision. The fact is that International Grandmaster Kashdan, FIDE (World Chess Federation) Judge and Delegate, former USCF Vice President, and Piatogorsky Cup Tournament Director, spent over 20 minutes of his valuable time talking to Mr. Amkraut and Mr. Blazm over the telephone, dispersing each of their windpuffs into thin air with his well of knowledge, solid logic, and common sense!

Regarding the fate of Mr. Weinberger's prize, whether this was given to him or returned to the CSCF treasury by the President's decision, had nothing to do with the directing of the tournament. Since Mr. Weinberger had played over half of his games, his prize would never have been redistributed to the other players in any circumstances.

By qualifying into the State Championship, Mr. Amkraut proved that he is a very good chess player. Our advice to him is to stick to playing chess and to leave tournament directing to those whose experience in the field goes back to the days before he was born.

**\*\*\*CCCA CHAMPIONSHIP\*\*\***

By HANS POSCHMANN, CCCA Championship Administrator

Each club affiliated to the CCCA has the right to nominate its representative, which would preferably be done through a knock-out tournament. Otherwise, a club may nominate its club champion, determined by any method. Deadline for nominations is Friday, 3 April, at the next CCCA general membership meeting. If entry by mail is desired, address it to me at 4821 Seneca Park Avenue, Fremont 94538, early enough to arrive by the deadline. At this meeting the pairings for the inter-club rounds will take place, as well as further details. The overall winner will receive a trophy for one year, to be turned over to the next winner each year and kept at the club meeting place if possible. Any questions may be addressed to me also.

**\*\*\*CCCA PUBLICATION NO. 2 JUST RELEASED: HOW TO ORGANIZE A NEW CHESS CLUB\*\*\***

The CCCA has just released another publication to assist organizers in the promotion of chess. Entitled "How to Organize a New Chess Club," written by Richard R. Shorman, CCCA League and Publicity Director and revised by Martin E. Morrison, CCCA Chairman and Editor, the publication outlines the basic principles involved in starting a new club. The publication is available free as another service of the CCCA upon request from the Editors (address on p. 2).

\*\*\*CCCA AFFILIATE DIRECTORY\*\*\*

(Current number of CCCA affiliates: (28); members: 424.)

For information on affiliation to the CCCA and its benefits, contact the Editors (address on p. 2).

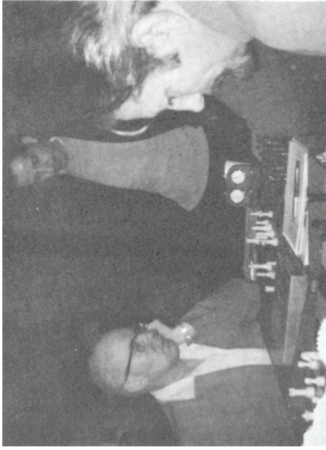
N. B. The following are not mailing addresses. —EDS.

ALAMEDA CHESS CLUB: Mon. 7:00-11:30 p.m.; McKinley Park Rec. Cen., Walnut St. and Buena Vista Ave., Alameda.  
ANTIOCH CHESS CLUB: Thurs. nights; Conference Room, Central Valley National Bank, 2518 Sommersville Rd., Antioch.  
BECHTEL CHESS CLUB: Only for employees of the Bechtel Corporation, San Francisco.  
BERKELEY YMCA CHESS CLUB: Wed., 7:00 p.m.; Palm Rm., Berkeley Cen. YMCA, 2001 Allston Wy., Berkeley.  
(CAPITAL CITY CHESS CLUB: Wed., 7:30-11:00 p.m.; Clunie Clubhouse, Alhambra and "F" Sts., Sacramento.)  
CATERPILLAR CHESS CLUB: only for employees of the Caterpillar Tractor Co. Plant, San Leandro.  
COLLEGE OF THE SEQUOIAS CHESS CLUB: Tues., 12:00 m.-1:00 p.m.; Rm. 338, Col. of the Sequoias, Visalia.  
CONCORD CHESS CLUB: Fri., 7:30-11:30 p.m.; Concord Sen. Citizens Cen., 2974 Salvio St., Concord.  
DEUEL VOCATIONAL INSTITUTION CHESS INTEREST GROUP: Only for inmates of the Deuel Vocational Institution, Tracy.  
EVERYMAN ATHLETIC CLUB, CHESS SECTION: Everyman Athletic Club, Fresno.  
FREMONT CHESS CLUB: Thur., 7:00-11:00 p.m.; Westridge Park Rec. Cen., 36200 Fremont Blvd., Fremont.  
HAYWARD CHESS CLUB: Mon. and Fri., 7:30-12:00 p.m.; Hayward Art and Science Cen., 2058 "D" St., Hayward.  
LIVERMORE CHESS CLUB: 1st and 3rd Frá., 7:30 p.m.-12:00 a.m.; Old Lib., Carnegie Bldg., Fourth and "J" Sts., Livermore.  
MARTINEZ CHESS CLUB: Mon., 7:30 p.m.; 1111 Ferry St., Martinez.  
MONTEREY PENINSULA CHESS CLUB: Thur. evenings; Casa Alvarado Chess Cen., 494 Alvarado St., Monterey.  
NEWARK CHESS CLUB: Tues., 7:00-10:30 p.m.; Newark Community Cen., 35501 Cedar Blvd., Newark.  
OAKLAND CHESS CLUB: Fri., 7:00-11:30 p.m.; Multipurpose Rm., Lincoln Elem. School, 225 Eleventh St., Oakland.  
ORINDA CHESS CLUB: Thurs., 7:30 p.m.; Orinda Community Church, 10 Irwin Wy., Orinda Village, Orinda.  
PIEDMONT HILLS HIGH SCHOOL CHESS CLUB: Mon.-Fri., 2:30-4:00 p.m.; Rm. E-14, Piedmont Hills High School, 1377 Piedmont Rd., San Jose.  
RICHMOND CHESS CLUB: Fri., 7:00 p.m.; Our Lady of Mercy Church, 301 W. Richmond Ave., Pt. Richmond.  
SAN JOSE CHESS CLUB: Wed., 7:30 p.m.; San Jose Central YMCA, 1717 The Alameda, San Jose.  
SAN QUENTIN CHESS CLUB: Only for inmates of the California State Prison, San Quentin.  
SANTA ROSA CHESS CLUB: Fri., 7:00-10:00 p.m.; Santa Rosa Jr. College, 1501 Mendocino Ave., Santa Rosa.  
UC DAVIS CHESS CLUB: Mon., 7:00-11:00 p.m.; Games Rm., Memorial Union, University of California, Davis.  
VALLEJO CHESS CLUB: Fri., 7:30 p.m.; Vallejo Community Cen. Bldg., 225 Amdor St., Vallejo.  
VISALIA CHESS CLUB: Fri., 7:30 p.m.; Rec. Park Bldg., 345 No. Jacob St., Visalia.  
WALNUT CREEK CHESS CLUB: Tues., 7:00 p.m.; Sen. Citizens Hospitality House, 1385 Civic Dr., Walnut Creek.  
WESTERN ADDITION CHESS CLUB: Tues., 7:30 p.m.; Family Service Agency, 1010 Gough St., Cathedral Hill, San Francisco

\*\*\*SUYKER'S CHESS HINTS\*\*\*

Exchange of pieces: When you have a cramped position, play for exchange of pieces. Each exchange favors the oppressed one. He who has a pawn majority on the flank does best to exchange the queens. When you have the advantage of the two bishops, it is wrong to play for closing of the position, and it is best to exchange the rooks. Try to exchange your bad bishop against the other's good bishop (the one on the color on which most of your pawns are located). It could give you a winning advantage in the endgame. It is wrong to exchange your fianchettoed bishop (protecting your king), when the enemy bishop of the same color remains on the board.

As CCCA Treasurer Leonard F. Trotter, of El Cerrito plays at an adjacent board, William Goss, of San Jose, member of four CCCA affiliated clubs, ponders his move. at the CCCA's Regional One-day Round Robin Chess Tournament at Walnut Creek (3.1.70). Tournament organizer, Walnut Creek Chess Club President, and CCCA Secretary, by Richard R. Shorman, CCCA League and Publicity Director.



NEXT CCCA GENERAL MEMBERSHIP MEETING: Friday, 3 April, 8:00 p.m., Lincoln Elementary School, 225 Eleventh Street, Oakland (the Oakland Chess Club's quarters). All CCCA members, i.e., members of any of the affiliates listed on p. 16 have full privileges of debate and voting. Nonmembers are welcome.

NEXT USCF TOURNAMENTS OF THE CCCA AND ITS AFFILIATES: 21-22 Feb., USCF Class Chess Tournaments at Berkeley (The Washingtonian); 22 Mar., Oakland Chess Club's 3rd Annual Four-man Sectional Chess Tournament; 29 Mar., Davis Open Chess Match-Tournament, CCCA State Championship Qualifying Points will be awarded at both tournaments. See enclosed tournament bulletins for details.

DEADLINES FOR SCACCHIC VOICE MATERIAL: News and tournament data, 6 March; other material, including columns, 6 February—for the next issue  
 CHESS ORGANIZERS: Please put Scacchic Voice on your mailing list for newsletters and tournament bulletins. Trade subscriptions welcome.  
 ADDRESS: Please notify the Editors as soon as possible of any change in your address. Scacchic Voice is not forwarded by the Post Office.

Editors  
 Central California  
 Chess Association  
 c/o Post Office Box 1632  
 Oakland, California 94604  
 Telephone: (415) 582-1973  
 THIRD-CLASS MAIL  
ADDRESS CORRECTION  
REQUESTED

NEXT AFFILIATE ASSESSMENTS DUE: 5 February and are delinquent there-  
 after. Club officers responsible should send 20¢ per club member, along with the full name and address (with ZIP Code) of each member to the CCCA Treasurer (address on p. 2). "A fine of \$1 will be levied against any affiliate which pays its assessment more than two weeks late without a valid excuse accepted by the Treasurer."

USCF MEMBERSHIPS AT 20% DISCOUNT: \$4 (under 21), \$8 (21 and over) per annum—regularly \$5 and \$10, respectively—for new or renewal memberships, if sent to the CCCA Treasurer. Benefits include a Chess Life & Review subscription, eligibility for a USCF (national) rating, and discounts on chess equipment.

CSCF MEMBERSHIPS: \$2.50 per annum (under 21), \$5 (21 and over) per annum from CSCF Treasurer Dr. Ralph Hultgren, 1501 LeRoy Ave., Berkeley 94708. Benefits include a California Chess Reporter subscription. CCCA MEMBERS ARE STRONGLY URGED TO BECOME MEMBERS OF THE USCF AND CSCF.

CHESS CLOCKS: lowest price in the US; no waiting months for overseas delivery. BHB Extra, brown plastic case, 6" x 3" x 1 1/2"; two year guarantee from manufacturer; "the world standard for dependable quality and durability at a moderate price" /USCF/. ONLY \$12.50. Immediate pickup from the CCCA Treasurer or League Director Frank V. Leffman (address on p. 2) or by mail (add 75¢ postage and insurance) from Mr. Leffman only.

