

107 Chess Clubs
and Organizations

TOTAL CIRCULATION: 950
731 Chess Players

112 Chess Publications
and Libraries

THE CENTRAL CALIFORNIA CHESS VOICE



CENTRAL CALIFORNIA'S CHESS MAGAZINE
and
OFFICIAL ORGAN
of the
CENTRAL CALIFORNIA CHESS ASSOCIATION
(An Authorized Affiliate
of the United States Chess Federation)

MARTIN E. MORRISON

Editors

. ELWIN C. MEYERS

December 1970-January 1971
Whole No. 24

US Senior Chess Master

JUDE F. ACERS

returns triumphant to
Central California from
a phenomenal nationwide
tour.

The master will give an

EXCLUSIVE FAREWELL TOUR
FOR THE CCCA

before leaving the country
for international chess com-
petition in Europe and,
hopefully, the coveted In-
ternational Master title.

An article covering his na-
tionwide tour and informa-
tion on reserving dates for
simultaneous exhibitions
and lectures will be found
on page 4.



US SENIOR MASTER JUDE F.
ACERS HERE FORMULATES GAME-
WINNING TACTICS AGAINST
AN EAGER GROUP OF PLAYERS
IN WASHINGTON STATE. Only
one player, Dr. Vic Keiser,
mathematics department
head and rating director of
the Washington State Chess
Federation, managed to
draw in this simultaneous
exhibition. (Photograph
courtesy of Russell W.
Miller, USCF Regional Vice
President.)

Central California Chess Association
Post Office Box 1622
Oakland, California 94604
Telephone: (415) 582-1973

Send change of address notices, undeliverable copies, orders for subscriptions, and other mail items to the magazine's mailing address above. Postmaster: Send PS Form 3579 to the magazine's mailing address above.

Chess Voice is published bimonthly by the Editors of the CCCA. EVERY MEMBER OF THE CCCA, I.E., EVERY PERSON WHO IS CERTIFIED BY THE APPROPRIATE OFFICER OF A CHESS CLUB OR ORGANIZATION AFFILIATED TO THE CCCA (listed on page 15) TO BE A MEMBER OR OFFICER OF THE AFFILIATE, receives mailed to his home a Chess Voice subscription, paid for in connexion with the payment of the affiliate's CCCA assessments in a distinct, voluntary, and independent act on the part of each individual member, the relation of subscriber being clearly understood and fully agreed to. Known office of publication (not the magazine's mailing address): Campus Bancroft Building, Room 206, 2440 Bancroft Way, Berkeley, California 94704. Second-class postage paid at Berkeley, California.

The opinions expressed in Chess Voice are those of the Editors or of the respective contributors. They do not necessarily constitute an official policy of the CCCA or any of its affiliates.

NONMEMBER SUBSCRIPTIONS: \$2.00 per annum.

ADVERTISEMENTS: 5¢ per word per issue on any subject (classified advertisements), \$5.00 per eighth page per issue, \$20.00 per insert per issue (this cost is more than 6¢ cheaper per page for mailing tournament circulars, etc., than postage costs alone).

CENTRAL CALIFORNIA OFFICIALS

ALL COMMUNICATIONS MAY BE ADDRESSED TO MARTIN E. MORRISON AT THE ADDRESS AND TELEPHONE NUMBER ABOVE.

Central California Chess Association (CCCA)

Officers (Members of the Executive Board): Martin E. Morrison, Chairman and Editor; Saleh Mujahed, Secretary; Leonard F. Trottier, Treasurer; Wesley A. Nelson, League Director; Elwin C. Meyers, Editor; Richard R. Shorman, Publicity Director.

Standing Committees. Clock: Leonard F. Trottier, Chairman; Martin E. Morrison. Tournament and Club Relations: Martin E. Morrison, Chairman, Elwin C. Meyers (Standing Tournament Subcommittee); Harold L. Barnett, Everett L. McNally (Club Coördinator).

CCCA Championship Administrator: Hans Poschmann. School Chess Coördinator: Robert E. Pellerin. Intercollegiate Chess League of America Liaison: Martin E. Morrison (ICLA Regional Vice President-Pacific). (The CCCA serves in the position of intercollegiate chess league for the Pacific Region of the ICLA.) Postal Chess Director: Edward J. Delgado.

California State Chess Federation (CSCF)

Officers: Robert E. Burger, Vice President; Spencer H. Van Gelder, Secretary; Dr. Ralph R. Hultgren, Treasurer.

Directors: W. Guthrie McClain, San Francisco Bay Area (Chairman, Standing Tournament Committee, Northern Section); Martin E. Morrison, At-Large, Northern California (Member, Standing Tournament Committee, Northern Section, and Standing State Tournament Calendar Committee); William A. Myers, Central California Area; Gunnar H. Rasmussen, Redwood Empire Area (Chairman, Board of Directors); Theodore Yudakufski, Monterey Bay Area (Member, Standing State Tournament Calendar Committee).

United States Chess Federation (USCF)

Officer-Director: Martin E. Morrison, First Vice President, Region VIII-Pacific (National Chairman, Nominating Committee; Member, Tournament Director Certification Committee, Chairman, USCF Official Guide Subcommittee, and Member, Rules Subcommittee; Member, Junior Chess Committee).

Directors: Ostap Bender, William A. Bills, Robert E. Burger, Col. Charles J. Daly, Anthony J. DiMilo, Russell A. Freeman, Dennis G. Fritzing, Kenneth M. Goodall, John Grefe, Dr. Benjamin L. Gross, Henry Gross, Dr. Ralph R. Hultgren, George Koltanowski (Life), Eugene S. Lien, W. Guthrie McClain, Meredith E. Mattingly, Elwin C. Meyers, William A. Myers, George B. Oakes, Gunnar H. Rasmussen, Philip D. Smith, James E. Tarjan, Sergius von Oettingen, Spencer H. Van Gelder, Max B. Wilkerson, Jr., Curtis R. Wilson, Theodore Yudakufski.

***THE COMPLETE OFFICIAL STATE CALENDAR AND CLEARINGHOUSE
FOR NORTHERN AND CENTRAL CALIFORNIA TOURNAMENTS
OFFICIALLY SANCTIONED BY THE CALIFORNIA STATE CHESS FEDERATION***

CHESS VOICE PUBLISHES THE ONLY COMPLETE OFFICIAL STATE CALENDAR AND SERVES AS THE ONLY CLEAR-
INGHOUSE FOR NORTHERN AND CENTRAL CALIFORNIA TOURNAMENTS. For information, clearance, and lis-
ting for Northern and Central California tournaments, contact this magazine directly (address
and telephone number on page 2).

Chess Voice is officially designated by the CSCF "to have charge of data" for this calen-
dar, "to avoid competition, publicize, and promote attendance." In addition, Chess Voice is
also officially designated by the CSCF "to coordinate tournament dates."

TOURNAMENT ORGANIZERS HAVE THE RESPONSIBILITY TO SUBMIT TO THIS MAGAZINE EVERY TOURNAMENT
DATE (ANNUAL DATES MUST BE SUBMITTED EVERY YEAR) AS MUCH IN ADVANCE AS POSSIBLE FOR CLEARANCE
FROM CONFLICTS. Cleared tournaments will be officially listed. Tournaments not cleared or not
submitted for clearance will not be listed and will have no official standing whatsoever.

USCF tournaments of the CCCA and its affiliates are capitalized. At these tournaments Cal-
points to determine Central California's finalist in the California State Chess Championship
will be awarded. Players must be members of the CSCF before entering a Calpoint tournament in
order to acquire points for that tournament.

4-5 DEC.	NO. CAL. CHAMPIONSHIP/SAN FRANCISCO CITY CHAMPIONSHIP	USCF	SAN FRANCISCO
18-19 DEC.	6TH ANN. SAN FRANCISCO BAY AREA AMATEUR OPEN	USCF	OAKLAND
8 JAN.	CCCA'S 3RD ANN. USCF REGIONAL 1-DAY ROUND ROBIN CHESS TOURNAMENT AT WALNUT CREEK	USCF	WALNUT CREEK
19-20 FEB.	CCCA'S 2ND ANN. GRAND PRIX CLASS CHAMPIONSHIPS OF USCF REGION VIII (PACIFIC)	USCF	BERKELEY
19-20 FEB.	CCCA'S 1ST ANN. COLLEGIATE CLASS CHAMPIONSHIPS OF THE PACIFIC	USCF	BERKELEY
19-20 FEB.	5TH ANN. WASHINGTON'S BIRTHDAY CHERRY TREE OPEN C. T.	USCF	MONTEREY
26-27 Feb.	1972 CFNC Championships	(USCF), CFNC	?
5-10 Mar.	National Open (A National Tournament)	USCF	Sparks, NV
12-18 Mar.	Louis D. Statham Masters & Experts Chess Tournament	USCF	Lone Pine
24-26 MAR.	8TH ANN. PRE-EASTER VISALIA AMATEUR OPEN CHESS TOURNAMENT	USCF	VISALIA
25-26 MAR.	CCCA'S 3RD ANN. USCF REGIONAL CLASS C. T. AT SAN JOSE	USCF	SAN JOSE
29-20 APR.	CCCA'S 2ND ANN. USCF REGIONAL GOLDEN BEAR CLASS CHAMPION- SHIPS	USCF	BERKELEY
27-29 MAY	1972 CALIFORNIA CLASS CHAMPIONSHIPS (A STATE TOURNAMENT)	USCF & CSCF	FRESNO
17-18 JUNE	CCCA'S 3RD ANN. USCF REGIONAL SPRING CLASS CHESS TOURNAMENT AT BERKELEY	USCF	BERKELEY
15-16 JULY	CCCA'S 1ST ANN. USCF WESTERN CLASS CHAMPIONSHIPS	USCF	FRESNO
5-6 AUG.	CCCA'S 4TH ANN. USCF REGIONAL ADULT & JUNIOR CHESS CHAM- PIONSHIP OF CENTRAL CALIFORNIA	USCF	HAYWARD
2-4 Sept.	23rd Ann. California Open (A State Tournament)	USCF & CSCF	Ventura
16-17 SEPT.	CCCA'S 2ND ANN. USCF REGIONAL CLASS C. T. AT SAN FRANCISCO	USCF	SAN FRANCISCO
4-5 NOV.	CCCA'S 2ND ANN. USCF REGIONAL AUTUMN CLASS CHESS TOURNAMENT AT BERKELEY	USCF	BERKELEY
23-26 Nov.	8th Ann. American Open (A National Tournament)	USCF	Santa Monica

THINGS TO SEND FOR

(1) "Game Scores of the Final Candidates Match: Robert J. Fischer vs. Tigran Petrosian,
with a Simple Description of Algebraic Notation," compiled by Martin E. Morrison and Richard R.
Shorman, 2 pp. FREE WITH A SELF-ADDRESSED STAMPED ENVELOPE.

(2) A nineteen-page summary of the 1971 USCF Business Meetings at Ventura, \$1.

(3) A two-page resume of the 1971 USCF Business Meetings at Ventura, 20¢.

Order from the Central California Chess Association, P. O. Box 1622, Oakland, CA 94604.

ACERS RETURNS FOR EXCLUSIVE FAREWELL TOUR FOR CCCA

US Senior Chess Master Jude F. Acers will return to California early next year after a triumphant nationwide tour, which took him to thirty states in six months. As of this writing he has given 124 exhibitions in 82 different cities and towns. Acers is a well-known exhibitor in this area too. Most readers will remember the extensive series he gave in Central California early this year, during which he visited almost every CCCA affiliate with impressive results. In fact, he holds the world record for a simultaneous exhibition by playing 114 games--and winning them all in 8½ hours.

The 27-year-old Senior Master, who, at age 17, was the youngest rated chess master in the southern United States, is equally at home in normal tournament competition, as demonstrated by his first-place wins in over 150 tournaments. In addition, Acers has drawn a match with International Grandmaster Walter S. Browne, of Australia, hailed as a phenomenal accomplishment and a giant step toward achieving the coveted International Master title.

In a rare combination, Acers combines his top-flight chess ability with a zeal for publicizing and promoting chess at all levels. On his nationwide tour his exhibitions were covered on radio and television. Audiences were spellbound at his lectures. One reporter described his rush of words as "a machine gun with its trigger stuck." Acers describes chess to the press and public at-large as this country's most popular sport, but little recognized because it is not a spectator sport. He is one of the most vigorous salesmen chess has.

Acers, never known for his false modesty, describes himself as one of the top ten young players in the country. His opponents, at first amused by his lofty claims, have been embarrassed by his stunning series of victories. As reported by Russell W. Miller, President of the Washington State Chess Federation, which sponsored an extensive tour in the Pacific Northwest, the Senior Master won 297 games, drawn five, and lost only eight--a result of which any grandmaster would be proud. His total record to date is 1033 wins, 37 losses, 18 draws!

After some final exhibitions in the East, Jude will return to Central California early next year to give a farewell tour exclusively for CCCA affiliates. As the CCCA provided an initial series of exhibitions as a send-off for his national tour, so we shall host him in another send-off, this time for international competition in Europe to obtain the international title he longs for. As he said to these editors in an interview last March: "I'm unique in the chess world. I expect to be one of the top ten grandmasters. I've been doing a lot of opening study. I know more about some openings than any other player. Of course, I might be completely wrong. I might just be one of the major grandmasters. We'll have to wait and see."

ATTENTION: CENTRAL CALIFORNIA CHESS CLUBS
RE: RESERVATIONS FOR FREE SIMULTANEOUS EXHIBITION AND LECTURE
BY USCF SENIOR CHESS MASTER JUDE F. ACERS

All chess clubs in Central California are eligible to reserve dates for one or two exhibitions. SPECIAL TERMS FOR CCCA AFFILIATES. No guarantee is required. Although Mr. Acers normally requires a minimum guarantee of \$75, this guarantee is being waived for CCCA affiliates (listed on page 15). However, since the master is in great demand, the CCCA is requesting that a minimum fee of 50¢ for juniors under 16 and \$1.00 for adults be charged and collected for Mr. Acers's expenses. Since CCCA affiliates are receiving such special terms, it is expected that each affiliate will take full advantage of this rare opportunity to stimulate chess activity in its area and will thus devote attention to publicizing the exhibition.

TERMS FOR NON-AFFILIATES. Although non-affiliates should be technically subject to the minimum \$75 guarantee, the CCCA will make special arrangements with those clubs not affiliated. Non-affiliates submitting reservations will be individually contacted about arrangements.

FORM OF RESERVATIONS. Each reservation should contain the following information: name of club; number of exhibitions requested; first, second, and third choices of date, time, and location (give exact directions); and the names, addresses, and telephone numbers of two club contacts for the exhibition. Dates available are from 15 January to 20 April.

DEADLINE FOR RESERVATIONS. 1 January 1972. Dates will be awarded strictly on a first-come basis, so the earlier you submit your reservation, the likelier it is that you will receive your first choice date. A full schedule of exhibitions will be published in the next issue.

MAILING ADDRESS FOR RESERVATIONS AND QUESTIONS. The Central California Chess Association, as given at the head of page 2.

MAIL YOUR RESERVATION IN NOW. YOU HAVE NOTHING TO LOSE AND AN UNSURPASSED, PROVEN STIMULUS TO CLUB ACTIVITY TO GAIN.

NEWS

CCCA and Berkeley CC Draw Largest-Ever Crowd to One-Day Tournament

Sixty-four players, setting a record for participation in a one-day Central California tournament, entered the Central California Chess Association's 1st Annual USCF Regional One-Day Chess Tournament at Berkeley, held Sunday, 7 November. Co-sponsored by the Berkeley Chess Club on the University of California campus, the tournament consisted of four-man round robin sections, with players of most nearly equal ratings playing each other. Winning trophies as first in their respective sections were Steven D. Cross, Dinis G. M.-Santos, Raymond J. Cuneo, Norman Wild, Ken Kuniyuki, George L. Harris, Juergen E. Kasprk, Joseph H. Frank, Mario D. Castillo, Charles Mullen, Ronald C. Blagg, David W. Lewis, John W. Spargo, Marc S. Grafstein, Richard D. Rosenberg, and Elizabeth C. Shaughnessy. The tournament was directed by Martin E. Morrison, USCF First Regional Vice President. /MEM/

*

Robert Newbold Tops Central Valley Open

The Central Valley Open, held in Sacramento 23-24 October, attracted sixteen players in the championship section and 29 in the booster section. The top section was won by Robert Newbold, rated 2172, with 4½-½. Gary Pickler, 2115, was second with 3½-1½. A surprisingly strong entry was James Longland, 1786, who finished third.

The top Booster was Charles Singleton, who won out on tie-breaks over David Oppedal, Richard Roach, Russel Vorpapel, and Michael Griffis, all with 4-1. Top C prize went to Griffis, and Charles Nevins captured the D/Unrated prize. /Anthony J. DiMilo/

*

Bumbler "B"'s Fly Again

Forty-one "B"'s nested at the Casa Alvarado Chess Center in Monterey on 16-17 October for the Annual Fight of the Bumbler "B." The five-round Swiss is restricted to those rated 1700 and below. Barry Nelson, scoring 4½ points, led a field of four tied for second place, Robert Raingruber, David Oppedal, Randall B. Pina, and Frank Flynn. Winning class prizes were Frank Sutor (C), Manual DaRosa (D), David Henry (Junior), Nora O. Harris (Queen "B"), Dan McLeod (Unrated), George B. Oakes (Senior), and Richard Osborne (Top Monterey). Harold Duncanson won the Upset Prize. Theodore Yudakufski, Games Host of the Center and a Director of the USCF, directed. /TY/

*

State Open Champion Kaplan Takes Another--The Capps Memorial

The Carroll M. Capps Memorial attracted 81 entrants to the Mechanics' Institute Chess Club in San Francisco, 23-25 October. Alan Benson and Charles Pardini directed the six-round open USCF Swiss System tournament. First was International Master Julio A. Kaplan, who scored 5½-½, to win \$300. Dennis Fritzing and Eleuterio A. Alsasua followed at 5-1, winning \$100 each. Winning first prize in their class were David J. Forthoffer and Rex Wilcox (Expert), Norman Wood (A), Marcos B. Costa (B), Michael E. Koblentz (C), Romulo T. Aguilar and Alan Hawkins (Unrated), Craig N. Barnes and James E. Tarjan (Junior), Boris Popov (Senior). Borel Menas received the Brilliancy Award. /Richard R. Shorman/

AFFILIATE NEWS

If your affiliate is not listed, this magazine has not received any material concerning your activities. Please keep this magazine informed of all your events for publication.

*

BERKELEY CC . . . From 27 August to 1 October conducted its Summer Random. Fifty-two participated, with Roger K. Alexander (A), George L. Harris (B), Michael E. Koblentz (C/D/E/Unrated), and Craig C. Squier (Non-USCF) winning Chess Digest credits. . . . From 27 August to 24 September a concurrent Master/Expert Cash Tourney was held with eight contestants. Guillermo Rey won \$15 and a clear first at 4-0, followed by Steven D. Cross and Harry Mayer. . . . In order to update the ratings of old members and rate the many new members the club has drawn--total membership is now 150--the club's First Classifier was held 3-29 October. Ninety players entered this one. John Toulouse and Jon A. Sjogren took first in the Experienced Division; Neil E. Spingarn, in the Intermediate Division; Donald G. Kanzaki, in the Novice Division; and Elizabeth Shaughnessy, in the Non-USCF Division. TD Martin E. Morrison says that because of the large numbers participating it's like directing a weekend tournament every Friday! /MEM/

CASA ALVARADO CHESS CENTER . . . Held a Chess Life & Review 25th Anniversary Chess Jubilee during September and October. Eighteen participated under the direction of Theodore Yudakufski. Group I was won by Robert Woronick, Group II, by Charles Nystrom, and Group III, by Neil M. Levy. All scored four points. . . . Previously, in July and August, The Great CACC, CCCA, USCF

(Continued on page 12.)

GAMES COLUMN

Exclusive Annotations by INTERNATIONAL GRANDMASTER LARRY EVANS

Larry Evans

ALGEBRAIC NOTATION

Initial letter of piece (but not a pawn) followed by square of arrival.

8	a8	b8	c8	d8	e8	f8	g8	h8
7	a7	b7	c7	d7	e7	f7	g7	h7
6	a6	b6	c6	d6	e6	f6	g6	h6
5	a5	b5	c5	d5	e5	f5	g5	h5
4	a4	b4	c4	d4	e4	f4	g4	h4
3	a3	b3	c3	d3	e3	f3	g3	h3
2	a2	b2	c2	d2	e2	f2	g2	h2
1	a1	b1	c1	d1	e1	f1	g1	h1
	a	b	c	d	e	f	g	h

Chess Voice Best Games Contest Nos. 3 and 4

Best Games from Contest No. 3, with Grandmaster Evans's annotations of one, will appear in the next issue.

For Best Games Contest No. 4, game scores must be received by this magazine (address on page 2) by 15 January. A Best Game will be chosen from each of the following rating groups: Master/Expert, Class A, Class B, Classes C/D/E/Unrated. All four Best Games will be published in the April-May issue, one of them, chosen at random, with the analysis of Grandmaster Evans.

Game scores must be legible and accurate, preferably in algebraic notation, and must include the following information: players' full names, cities of residence, date of game, name of the event in which the game was played, and the players' USCF ratings at the time of the game, if known. Games must have been played in an event having taken place no more than six months preceding the closing date of the contest. Submit as many games as you like--you have nothing to lose. The contest is open to all Chess Voice readers.

Winners of Contest No. 2

Best Master/Expert

No. 83. Craig N. Barnes (2042), Berkeley--Dr. Ira Pohl (2002), Santa Cruz. 19 June 1971, CCCA's 2nd Annual USCF Regional Class Chess Tournament at San Jose, Master/Expert Division, Round I. Robatsch Defense.

1 e4 g6 2 d4 Bg7 3 Nc3 d6 4 Be3 c6 5 f4 Nf6 6 h3 h5 7 Nf3 b5 8 a3 e6 9 Bd3 Bb7 10 Qe2 Qe7 11 f5 gf 12 ef Nbd7 13 fe fe 14 Bg6+ Kd3 15 Ng5 Kc7 16 Bf4 Nf8 17 Nf7 N:g6 18 B:d6+ Q:d6 19 N:d6 K:d6 20 0-0-0 Rae8 21 Rhf1 Kc7 22 Qd3 Bh6+ 23 Kbl Nf4 24 Qe3 N6d5 25 Qe5+ Kb6 26

R:f4 N:f4 27 Qc5+ Ka6 28 a4 ba 29 b4 Ba8 30 b5+ Kb7 31 bc+ Kc8 32 Nb5 Nd5 33 N:a7+ Kc7 34 Nb5+ Kc8 35 c4 Bf8 36 Qa7 B:c6 37 cd Re7 38 Nd6+ Kd8 39 Qb8+ Kd7 40 dc K:c6 41 Rcl+ Kd5 42 Qb5+ K:d4 43 Qc5+ Kd3 44 Qc3+ Ke2 45 Qf3+ Kd2 46 Nc4++

Best Class A

No. 84. Maj. Robert A. Karch (1880), Okinawa--Samuel J. Swaim, Jr. (1848), Okinawa. 18 April 1971, USCF Match, Game No. 6. Sicilian Defense.

1 e4 c5 2 Nf3 d6 3 d4 cd 4 N:d4 Nf6 5 Nc3 a6 6 Be2 (a) e5 (b) 7 Nb3 Be7 8 0-0 Be6 (c) 9 Be3 d5 (d) 10 N:d5 N:d5 11 ed Q:d5 (e) 12 Nc5! (f) B:c5 (g) 13 Q:d5 B:d5 14 B:c5 (h) Nd7 15 Bd6 Rc8 (i) 16 c3 (j) Rc6 17 Ba3 Rg6 (k) 18 f3 h5 19 Rfd1 Bc6 20 Rd6 (l) R:d6

21 B:d6 f5 (m) 22 Bc4 (n) Nb6 23 Bb3 e4 24 Rd1! (o) ef 25 Bc7! Nd7? (p) 26 Re1+ Be4 (q) 27 gf Nf6 28 fe Kd7 (r) 29 e5 Ne4 30 Bb6 Rh6 (s) 31 Rd1+ Ke8 32 Rd8+ Ke7 33 e6 Nc5 34 B:c5+ K:d8 35 a4 g5 (t) 36 a5 Rh7 37 e7+ R:e7 38 B:e7+ K:e7 39 Bd5 resigns (u)

(a) Not sharp, but certainly solid. More critical problems are posed by 6 Bg5, or even Fischer's old standby Bc4.

(b) Because White has developed his bishop to a tame post, Black has the option of a last minute switch to the Scheveningen (6...e6) or the Dragon (6...g6). The text leads to the Najdorf proper.

(c) Another satisfactory system is 8...0-0 9 Be3 Nbd7, with the intention of developing this bishop on b7.

(d) This break is considered premature, since White is better developed, he profits from the opening of lines. 9...0-0 10 f4 ef 11 B:f4 Nc6 is a more usual continuation.

(e) 11...Bd5 12 c4 is also in White's favor.

(f) Not only threatening to win the two bishops, but containing a subsidiary threat of Bf3.

(g) Acquiescing to an inferior ending. Yet no better is 12...Q:d1 13 Rfd1 Bc8 14 Bf3 Nc6 15 c3, and Black cannot develop his queen-side.

(h) Too passive. Better is 14...Nc6, followed by 0-0-0. The text only drives the bishop to a dominating outpost.

(i) Black neglects the safety of his king, which eventually leads to disaster. A better try is 15...0-0-0.

(j) Also strong is 16 c4 B:c4 17 B:c4 (if 17 Racl, Nb6 holds) R:c4 18 Racl.

(k) Black's counter-attack is largely illusionary. He still has to face the permanent problems of consolidating his center and finding a haven for his king. A better idea is 17...f6 18 Rfd1 Nb6, followed by Kf7, but Black is already in trouble.

- (l) Exchanging a pair of rooks only eases Black's cramp. Positionally stronger is 20 Rd2 and Rad1 next.
- (m) Overly aggressive. 21...f6 is sturdier. Now Black's center is too loose, his "e" pawn in particular. Even 21...Rh3 is playable.
- (n) With the unpleasant threat of 23 B:e5 N:e5 24 Re1 Be4 25 Bf1.
- (o) The finest move of the game. 24 fe B:e4 25 Rd1 is also strong, but the text sets up a nasty little trap.
- (p) The losing move. The only defense is 25...f2+! 26 K:f2 Nd7. Now if 27 Re1 Be4 28 Bd5 Nf6 29 B:b7 Kd7! holds. But 27 Rd6! sets unpleasant threats.
- (q) Finally Black pays the penalty for keeping his king on this file throughout the game. Even worse is 26...Kf8 27 Bd6+.
- (r) The alternative was "resigns." Now Black remains a piece down without the slightest compensation.
- (s) A last gasp.
- (t) 35...b5 is necessary, but still hopeless.
- (u) White is to be commended for pursuing his initiative relentlessly. Black might do well to remember that the first rule of defense is king safety.

Best Class B

No. 85. Dale Lock (1620), Berkeley--Paul Enright (1860), Indianapolis. 7 May 1971. Berkeley Chess Club's Open Championship. Catalan.

1 Nf3 Nf6 2 g3 d5 3 Bg2 Bf5 4 0-0 h6 5 d4 e6 6 R:c8 R:c8 20 Re1 Bc2 21 Qe2 Q:d4 22 Rcl Qb2 23 c4 c6 7 Nc3 dc 8 a4 Bb4 9 Ne5 Nbd7 10 N:c4 Nb6 Qe3 Rc6 24 Re1 Q:b3 25 Qe2 Q:a4 26 f4 Qd4+ 27 11 N:b6 ab 12 e4 Bh7 13 e5 Nd5 14 N:d5 cd 15 Kh1 Bd3 28 Qd2 Rc2 29 Qe3 Q:e3 30 R:e3 Rcl+ 31 Bd2 Qe7 16 Rcl 0-0 17 B:b4 Q:b4 18 B3 Rfc8 19 Bf1 B:f1 32 Kgl d4 33 resigns

Best Classes C/D/E/Unrated

No. 86. Stephen Norton (unr), Berkeley--Gerald Smith (unr), Berkeley. 7 May 1971. Berkeley Chess Club's Open Championship. Stonewall.

1 d4 Nf6 2 e3 d5 3 Bd3 e6 4 Nd2 c5 5 c3 Qc7 6 Nf6 16 Rgl Ne4 17 N:e4 de 18 N:g6 hg 19 Rg6+ Kf7 f4 b6 7 Ngf3 c4 8 Bc2 Bb7 9 Ne5 Bd6 10 Qf3 0-0 20 Q:f5+ Ke8 21 Re6+ Be7 22 Qg6+ Kd8 23 B:e4 B:e4 11 0-0 Ne8 12 Qh3 f5 13 g4 g6 14 gf ef 15 Kh1 24 Q:e4 Kd7 25 R:e7+ resigns

CCCA LEAGUES

By HAROLD L. BARNETT, 1970-71 CCCA League Director

The following are the winners of the Top Player awards in the CCCA's 1970-71 League:

USCF CATEGORY					INDEPENDENT CATEGORY				
Div.	Board	Name	Team	Score	Div.	Board	Name	Team	Score
South	M/Ex/A	Richard Roubal	San Jose	4	South	1	Charles A. Maddigan	Oakland	5*
	B	John Peterson	San Jose	4		2	Craig Tabler	Oakland	2½
	C/D/E	Ernest Rosenthal	San Jose	2½		3	Marvin S. Lee	Oakland	3½
	Unr	Neal Teixeira	Fremont	3		4	Jerry Gerhardt	Oakland	3
North	M/Ex/A	Louis Bignami	Berkeley	3	North	1	Steve Kornher	S. Rosa	6*
	B	Roger Alexander	Oakland	5		2	A. Kaderli	Vallejo	3
	C/D/E	Marcos B. Costa	Oakland	4		3	David Hubbard	M. Valley	2
	Unr	Tilden Hansen	Marin	2		4	Roger Dusatko	S. Rosa	3
East	M/Ex/A	James Shearer	Livermore	3*	East	1	Karl Deibler	S. Rosa	3
	Hon. M.	Chas. Comstock	DVI	3*		2	Donald Stone	Orinda	2½
	B	Garret Boer	Livermore	2*		3	Duncan D. Campbell	Orinda	2
	C/D/E	Ken Trigger	Livermore	3*		4	Alvin R. Boyd	Orinda	3
West	Unr	Ken Miller	Concord	4*	West	1	John Wadsworth	Orinda	4
	Hon. M.	Godwin Kawelo	DVI	3*		2	Marvin Smitherman	Alameda	4
	M/Ex/A	Chas. Maddigan	Oakland	2*		3	Alan G. Bodine	Berkeley	3
	B	Gary Kobliska	Oakland	2*		4	Dennis Claudio	Richmond	3
Unr	C/D/E	Michael Donald	Berkeley	2*	3	R. Carl Shiflett	Berkeley	4	
	Unr	G. Mehta	Oakland	1	4	Tom Reynolds	Alameda	2	

* indicates a perfect score.

*

Four teams participated in the CCCA's 1971 USCF Summer League, from the Concord, Fremont, Livermore, and Orinda Chess Clubs, under the captaincies of William I. Noble, Hans Poschmann, Wesley A. Nelson, and Duncan D. Campbell, respectively. All players were USCF members, and there were not strength restrictions on the boards. The Livermore team was the winner.

BUSINESS PROCEEDINGS OF THE CCCA
By SALEH MUJAHED, CCCA SECRETARY



A regular meeting of the CCCA was held on Friday, 9 July 1971, in the Palm Room of the Berkeley Central YMCA, 2001 Allston Way, Berkeley. The meeting was called to order at 8:28 p.m. by the Chairman, Martin E. Morrison.

The total attendance for the meeting was as follows: Edward J. Delgado, Dinis G. M. Santos (Berkeley CC); Martin E. Morrison (Berkeley CC, UC Division); Hans Poschmann (Fremont CC); Wesley A. Nelson (Livermore CC); Leonard F. Trottier (Richmond CC); Saleh Mujahed (Walnut Creek CC). Six of 39 affiliates; 7 members.

It was adopted by general consent that the minutes of the previous (9 April 1971) meeting be approved as published in Chess Voice, the CCCA's official organ.

It was adopted by general consent THAT THE UNIVERSITY OF SANTA CLARA CHESS CLUB, UPON THE APPLICATION OF STAN FUJISHIN, ACTING DIRECTOR, BE AFFILIATED TO THE CCCA. The Chairman noted that the Caffe Midi Chess Club had changed its name to the Sanger Chess Club.

The Treasurer, Mr. Trottier, gave the following

REPORT OF THE TREASURER OF THE CCCA
FOR THE PERIOD 9 APRIL 1971 TO 9 JULY 1971

<u>Receipts.</u>		<u>Disbursements.</u>	
Balance on hand 9 April 1971	\$207.74	USCF memberships transmitted	\$ 24.00
Bimonthly assessment of af- filiates	\$127.45	Editors' Expenses	325.00
Fines for late assessment payment	5.00	P. O. Box rent	2.70
USCF memberships received	25.00	Assessment overpayment returned ..	0.40
Clock sales	252.00	Clock sales retained	208.01
		Postage and insurance on clocks sold	0.85
	<u>\$617.19</u>	Balance on hand 9 July 1971 ...	<u>*56.23</u>
		Total	<u>\$617.19</u>

*League Fund: \$32.10; General Fund: \$24.23; Tournament Subcommittee Fund \$200.00 (taken from clock sales retained). CCCA members on 9 July 1971: 461.

Mr. Nelson reported for Harold L. Barnett, League Director, who was absent, that five teams had expressed an interest in the CCCA's 1971 Summer League, which was in the process of being paired. He also reported that special certificates were being prepared for the 1970-71 CCCA League winners.

Mr. Poschmann, CCCA Championship Administrator, reported on the third and fourth round pairings in the 1971 Championship.

Mr. Delgado, Postal Chess Director, reported that a team of four had been established and was awaiting entry into the next available postal team competition.

The Chairmen of the Standing Clock Committee, Mr. Trottier, gave the following

REPORT OF THE CCCA STANDING CLOCK COMMITTEE
FOR THE PERIOD 9 APRIL 1971 TO 9 JULY 1971

21 clocks sold	\$252.00	Clocks sold to date: 240.	
Clock sales retained	\$208.01	\$200 taken from clock sales retained and put into Tournament Subcommittee Fund.	
Postage and insurance	0.85		
Clock profit	<u>\$ 43.14</u>		

It was adopted by general consent THAT THE LEAGUE DIRECTOR SPEND NO MORE THAN THE AMOUNT REMAINING IN THE LEAGUE FUND AND THAT ANY SURPLUS AFTER THE SEASON GO INTO THE GENERAL FUND.

It was adopted by general consent that the meeting adjourn. The Chairman declared the meeting adjourned sine die at 9:53 p.m.

*

The Chairman, in accordance with Article V, Section i, of the CCCA Bylaws, has announced the CCCA General Membership Meeting in September for 17 September 1971, 8:00 p.m., at the Berkeley Chess Club, Berkeley Central YMCA, 2001 Allston Way, Berkeley.

*

A regular meeting of the CCCA was held on Friday, 17 September 1971, in the Palm Room of the Berkeley Central YMCA, 2001 Allston Way, Berkeley. The meeting was called to order at 8:10 p.m. by the Chairman, Martin E. Morrison.

The total attendance for the meeting was as follows: Edward J. Delgado (Berkeley CC); Martin E. Morrison (Berkeley CC, UC Division); Hans Poschmann (Fremond CC); Harold L. Barnett, Wesley A. Nelson (Livermore CC); Elwin C. Meyers (Oakland CC); John Jaffray (Orinda CC); Leonard F. Trottier (Richmond CC); Saleh Mujahed (Walnut Creek CC). Visitor: Mrs. John Jaffray. Seven of 39 affiliates; 9 members.

The Treasurer, Mr. Trottier, gave the following

REPORT OF THE TREASURER OF THE CCCA
FOR THE PERIOD 9 JULY 1971 TO 17 SEPTEMBER 1971

<u>Receipts.</u>		<u>Disbursements.</u>	
Balance on hand 9 July 1971 ...	\$ 56.23	USCF memberships transmitted	\$ 44.00
Bimonthly assessments of af-		Editors' Expenses	200.00
filiates	\$102.40	P. O. Box rent	2.70
Fines for late assessment		Clock sales retained	287.52
payment	3.00	Postage, insurance, and supplies	<u>4.12</u>
USCF memberships received	44.00	Balance on hand 17 September	
Clock sales	505.00	1971	<u>*187.29</u>
Charter use	15.00	Total	<u>\$725.63</u>
	<u>\$725.63</u>		

*League Fund: \$32.10; General Fund: \$155.19; Tournament Subcommittee Fund: \$100.00 (\$100.00 returned to clock purchases). CCCA members on 17 September: 471.

The League Director, Mr. Barnett, reported on the conclusion of the CCCA's 1970-71 League and the 1971 Summer League.

The CCCA Championship Administrator, Mr. Poschmann, presented the perpetual trophy to Mr. Jaffray as the 1971 CCCA Champion. Mr. Jaffray was given a round of applause, and a photograph was taken.



The Postal Chess Director, Mr. Delgado, reported on the teams with which the CCCA postal team is playing and urged more participation from CCCA members.

The Chairman of the Standing Clock Committee, Mr. Trottier, gave the following
REPORT OF THE CCCA STANDING CLOCK COMMITTEE
FOR THE PERIOD 9 JULY 1971
TO 17 SEPTEMBER 1971

40 clocks sold	\$505.00
Clock sales retained	\$287.52
Postage, insurance, and sup-	
plies	<u>4.12</u>
	<u>\$213.36</u>

The election for League Director was held. Mr. Meyers nominated Mr. Barnett, who declined. Mr. Meyers then nominated Mr. Nelson.

Hans Poschmann (l.), CCCA Championship Director, presents the perpetual trophy to John Jaffray, of the Orinda Chess Club, at the CCCA's 17 September General Membership Meeting. Jaffray defeated last year's CCCA Champion, Sergius von Oettingen, of the UC Davis Chess Club. Looking on are Harold L. Barnett (fr.) and Elwin C. Meyers (rear). (Photograph by Martin E. Morrison, Chess Voice Editor.)

IT WAS ADOPTED THAT MR. NELSON BE ELECTED LEAGUE DIRECTOR.

It was moved by Mr. Barnett and seconded by Mr. Nelson that a set of CCCA League Rules which Mr. Nelson had presented be adopted. The rules were discussed and amended, primarily by substitution from a slightly different version presented by Messrs. Meyers and Morrison, and finally adopted unanimously /COPY OF ADOPTED "CCCA LEAGUE RULES" ON FILE/.

It was moved by Mr. Barnett, seconded by Mr. Meyers, that a set of CCCA League Operating Rules which Messrs. Meyers and Morrison presented be adopted. The rules were discussed and amended, primarily by substitution from a different version presented by Mr. Nelson, and finally adopted. /COPY OF "DUTIES OF THE LEAGUE DIRECTOR" ON FILE/.

It was adopted by general consent that the meeting adjourn. The Chairman declared the meeting adjourned sine die at 10:34 p.m.

*

The Chairman, in accordance with Article V, Section i, of the CCCA Bylaws, has announced the CCCA General Membership Meeting in January (the Annual Meeting) for Friday, 7 January 1972, 8:00 p.m., at the Berkeley Chess Club, Berkeley Central YMCA, 2001 Allston Way, Berkeley.

PROBLEMS COLUMN

Chess Voice Problem Solving Contest No. 16

Solutions (the key move, i.e., the first move), preferably in algebraic notation, must be received by this magazine (address on page 2) by 15 December. The winner will be the entrant who submits the correct solutions to the most problems. Ties will be broken by lot. The contest is open to all Chess Voice readers.

The prize for Contest No. 16 will be W. H. Cozens's new book, The King-Hunt in Chess, which is reviewed on page 13.

NO. 90

LEAST DIFFICULT

White to play and mate in 2.

NO. 91

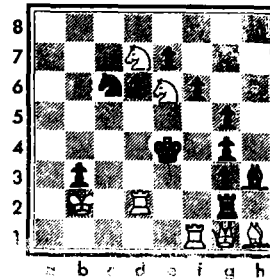
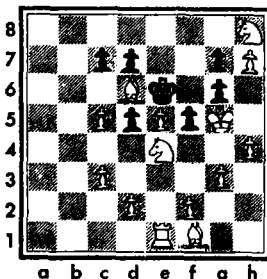
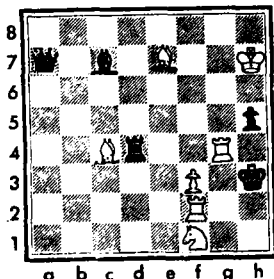
MORE DIFFICULT

White to play and mate in 2.

NO. 92

MOST DIFFICULT

White to play and mate in 2.



*

Winner of Contest No. 15

Nine entrants submitted correct solutions to all three problems. By lot Noreen Kuniyuki, of Berkeley, won James R. A. Schroeder's Eighth Match for the Chess Championship of the World 1908: Emanuel Lasker vs Siegbert Tarrasch. Other correct solvers were: Douglas Burleigh, Leo G. Connolly, Anthony Mock, Charles R. Nevins, David Sagan, Raymond Segal, George N. Shoemaker, and Edward S. Yeung.

*

Solutions to Contest No. 15

No. 87: Ng7! No. 88 (by Sam Lloyd, famous for his trick solutions to his compositions): Kf2! Note that White can castle if the Black king were to move away. No. 89 (by Alois P. Shepperson, of San Lorenzo, member of the Hayward Chess Club): 1 Qc1!! h6 (or 1...N:c1 2 Ng6+hg 3 Qh1++) 2 Q:h6+! gh 3 Ng6++.

STATEMENT OF OWNERSHIP, MANAGEMENT AND CIRCULATION

1. Title of Publication: Central California Chess Voice, The. 2. Date of Filing: 24 September 1971. 3. Frequency of issue: Bimonthly. 4. Location of Known Office of Publication: Campus Bancroft Bldg., Rm. 206, 2440 Bancroft Wy., Alameda Co., Berkeley, CA 94704. MAILING ADDRESS OF PUBLICATION: P. O. Box 1622, Oakland, CA 94604. 5. Location of the Headquarters or General Business Offices of the Publishers: Same. 6. Names and Addresses of the Publisher, Editor, and Managing Editor: Publisher, Martin E. Morrison & Elwin C. Meyers, P. O. Box 1622, Oakland, CA 94604; Editor, Same; Managing Editor, Same. 7. Owner: Central California Chess Association (ownership equally divided among all members of the Association), P. O. Box 1622, Oakland, CA 94604. 8. Known Bondholders, Mortgagees, and Other Security Holders Owning or Holding 1 Percent or More of Total Amount of Bonds, Mortgages or Other Securities: None. 11. Extent and Nature of Circulation (Average No. Copies Each Issue During Preceding 12 Months, Actual Number of Copies of Single Issue Published Nearest to Filing Date): A. Total No. Copies Printed 813, 925; B. Paid Circulation, 1. Sales Through Dealers and Carriers, Street Vendors and Counter Sales 0, 0, 2. Mail Subscriptions 682, 748; C. Total Paid Circulation 682, 748; D. Free Distribution by Mail, Carrier or Other Means, 1. Samples, Complimentary, and Other Free Copies 34, 37, 2. Copies Distributed to News Agents, but Not Sold 0, 0; E. Total Distribution 716, 785; F. Office Use, Left-Over, Unaccounted, Spoiled After Printing 97, 140; G. Total 813, 925.

***UNDERSTANDING CHESS LAWS AND TOURNAMENT DIRECTION:
THE WORLD CHESS FEDERATION AMENDS THE TOUCH-MOVE RULE***

By MARTIN E. MORRISON, Member, USCF Tournament Director Certification Committee

Questions and comments from readers on chess laws and tournament direction are welcomed. Contact the columnist at P. O. Box 1622, Oakland, CA 94604; (415) 582-1973.

In one of its most important acts since 1952, when the modern laws for chess were adopted, the General Assembly of FIDE (the World Chess Federation) substantially amended the touch-move rule at the 1971 FIDE Congress, held in late August and early September in Vancouver. Ordinarily the Assembly, which has the final responsibility over the chess laws used by the world's chess players, is very reluctant to tamper with the established Laws of the Game of Chess. In fact, the Congress itself must have been not a little surprised when a detailed amendment of Article 8 (The Touched Piece) was proposed--and carried by a "comfortable margin"--by Kenneth Harkness, member of FIDE's Permanent Commission for the Laws of the Game. It was the privilege of this columnist to work with Mr. Harkness and FIDE Judge Gerard Heynen, of Belgium, on the drafting of the amendment.

From 1929, when the first international code of chess laws was adopted by FIDE, to 1952, a detailed 163-word article insured that a player who touched one or more pieces would have to carry out his intentions. When the modern code was adopted in 1952, a more general prescription of 58 words, known as Article 8, was substituted. That the 58 words were confusing to tournament directors became evident when successively in 1968, 1969, and 1970 the Permanent Commission was importuned for clarification of the article.

In 1968 the Commission hedged, calling the article "sufficiently clear." In 1969 the Commission opened a Pandora's box by ruling that if a player touched one of his own men and then an enemy man, he must make the capture, even if he had never released his own man. Many directors had previously thought that the article governed only "the first piece touched," and that in the 1969 case, for example, the player could make any move with his own man, the first touched, as long as he had not released his own man, thus completing the move. These directors felt that the second piece touched, the enemy man in this case, was not involved under the article. In 1970 the Commission still ruled that "there is no necessity for a change . . . or an addition" and adopted Mr. Harkness's explanation as given in the Official Chess Rulebook.

Meanwhile Mr. Harkness had been studying Article 8 and discovered another weakness in it. In the case where pieces of opposite color were touched, but the one could not capture the other, the player had to move the first touched piece. Now in practice, we know that some players will first pick up the enemy man and replace it with his own man in capturing; others will slide their own man onto the square of capture and then remove the enemy man. Should these practices--of habit, surely, not of intention--play a role in the touch-move rule?

When it came to writing the actual text of the amendment, Mr. Harkness, Mr. Heynen, and this columnist had to resolve certain basic questions. First, we decided to propose that when men of opposite color are touched, the one must be captured by the other (according to the 1969 Commission decision), but if the capture were illegal, the enemy man must be captured by some other piece. The basis of this suggestion, devised by Mr. Harkness, was that the order of touching the two pieces in a capture, as a matter of habit on the part of the players, should be irrelevant, and since most probably the idea of a capture was uppermost on the player's mind, a capture should be made. Secondly, when one or more men of one color and two or more men of the opposite color are touched (a case not specifically covered in Article 8), we recommended that the player's opponent must decide the move or capture to be made. Thirdly, the director must enforce a touch-move rule violation if he witnesses it. Article 8 spoke only of a player claiming a violation, although some directors felt that it was also the duty of the director to enforce the rule under Article 19b.

A questionnaire was circulated at the US Open in August amongst the masters and grandmasters to learn their feelings about the proposed amendment. With few exceptions the principles of the amendment were received as acceptable. In Vancouver, after a favorable recommendation by the Permanent Commission, the General Assembly of FIDE adopted the amendment to become law for the world's thousands of chess players. The amended articles follow.

ARTICLE 8. The Touched Man. Provided that he first warns his opponent, the player having the move may adjust one or more men on their squares. Except for the above case, if the player having the move touches one or more men, he must move or capture the first man touched that can be moved or captured; and if he touches men of opposite colors, he must take the enemy man with his own touched man, or, if this is not possible, with another man. If none of the touched men

can be moved or captured, the player is free to make any legal move he chooses. If a player wishes to claim a violation of this rule, he must do so before he touches a man himself.

ARTICLE 20 (ADDED, THE OLD ARTICLE 20 TO BE RENUMBERED 21). The Touched Man. The following rules are supplementary to those of Article 8: 1. Provided that he first warns his opponent, or the tournament controller if the opponent is absent, the player whose turn it is to move may adjust one or more men on their squares. Except for the above case, if the player whose turn it is to move touches a) one or more of his own men, he must move the first that can be moved; but if the first two touched men are the King and a Rook, the player must castle with that Rook, or, if this is illegal, move the King. b) one or more of his opponent's men, he must capture the first that can be taken. c) one of his own men and one of his opponent's men, he must capture the latter with the former, or, if this is illegal, with another man; and if it is impossible to capture the enemy man, the player must move his own touched man. d) one or more men of one color and two or more men of the opposite color, the player's opponent shall specify 1) the touched man that must be moved or captured; or 2) the capture that must be made by two touched men. In the situations of clauses a) and b) above, if it cannot be determined which moveable or captureable man was touched first, the opponent shall specify which touched man must be moved or captured, as the case may be. This provision does not apply to the castling move referred to in clause a). 2. In all the situations of section no. 1 above: a) if the player touches a man of his own with no legal moves, or an enemy man that cannot be captured, the situation shall be regarded as one in which the player did not touch the said man. b) If none of the player's touched men can be legally moved and none of the touched enemy men can be captured, the player is free to make any move he chooses. 3. The enforcement of the foregoing regulations by the tournament controller does not require a claim to be made, but if a player wishes to claim a violation he must do so before he touches a man himself. When a player is accused by his opponent, or by an official, of breaking any of these regulations, the tournament controller should stop the clocks of both players until he has decided what action shall be taken; and if the tournament controller rules that the opponent must specify the move or capture to be made, the latter's clock shall be started and remain running until he announces his selection and starts the other player's clock.

*

Mention should be made of the USCF's impressive delegation to the Congress, who were instrumental in carrying not only the amendment of Article 8 but many other matters important to US chess players: Fred Cramer, FIDE Vice President; Col. Edmund B. Edmondson, USCF Executive Director; Dr. Arpad E. Elo, Secretary of the Qualifications Commission; and Kenneth Harkness. My deepest thanks must go to Mr. Cramer, Mr. Harkness, Russell W. Miller, USCF Regional Vice President, and Robert C. Eldridge, Councillor for Canada, who supplied me with much material from the Congress.

NEXT ISSUE: Interpretations of the Laws made by the Permanent Commission at the Vancouver Congress.

AFFILIATE NEWS
(Continued from page 5.)

1971 Alphabet Soup Chess Tureen-ament was held to enroll club members in the CCCA. Twenty-four four participated. Winning their respective groups were William F. Gray (FIDE), Kenneth E. F. Howes (CACC), John A. Anderson (CCCA), and Andy Lindberg/Kathleen Grover/Susan Fuhs (USCF, tie).
[TY]

CONCORD CC . . . Following a series of recent reorganization conferences, the club held their first general election of officers in more than two years. Four Club Directors were chosen to conduct the business of the club. The directors in turn elected the officers from among themselves. Ken Miller is the new President, John R. Moore, Jr., is Tournament Director, William I. Noble is USCF Team Captain, and Lynn C. Keck is Publicity Director. In order to divide the halls of power, Frederick J. Ulrich took over as Treasurer (fondly referred to as "The Business Manager").
[LCK]

MECHANICS' INSTITUTE CC . . . Following his participation in the US Open in Ventura, International Grandmaster Florin Gheorghiu visited the San Francisco Bay Area for an exhibition at the club. No one could win against the Roumanian ace on 23 August, when he posted the excellent score of twenty wins and four draws (with Alan Benson, Fred Bemanuele, Roger Gabrielson, and John Peterson).
[RRS]

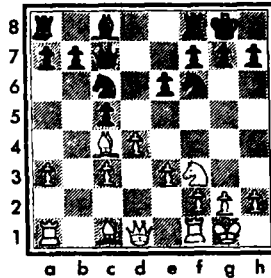
UC DAVIS CC . . . The 27th David Rated Tournament, June-September, was topped by Gary C. Pickler, followed by Frank J. Garosi. Fifteen participated. In the 28th DRT, September-October, S. H. Sosnick won Section A. H. Everett won Section B. Meanwhile Pickler won three speed tournaments!
[Sergius von Oettingen]

*** THE NORMAL NIMZO***
By LOUIS BIGNAMI, of Oakland

The aim of this article is to take a typical position arising out of a commonly played opening and to deal with the position conceptually, then, by citing a few major lines, to show the plans for both sides. Hopefully, this will aid those players who get out of the opening and then find themselves without a plan. Remember Kotov's judgment: "A weak plan is better than none."

The normal Nimzo is reached by way of the Rubenstein variation as follows: 1 d4 Nf6 2 c4 e6 3 Nc3 Bb4 4 e3 0-0 5 Nf3 d5 6 Bd3 c5 7 0-0 Nc6 8 a3 B:c3 9 bc dc 10 B:c4 Qc7.

Black reacts strongly in the center after White's 4 e3 and seeks exchanges after completing development to ease White's pressure. There are at least seven different moves tried here. (See PCO, MCO, or Theory and Practice.) Strategically, White seeks to force e4, freeing the QB and, by playing e5, to drive away the knight, which is the sole protection of Black's king-side, then, by using the bishop pair to advantage in the resulting open position, to attack g7 and h7.



Black seeks simplifying exchanges and pressure on White's center, which he hopes will become weak as it advances. Black also can play advantageously by forcing forward his queen-side majority, which is, of course, an end-game advantage. In all cases he must keep pressure on e4.

The most common move for White in this position is Gligoric's 11 Bd3. Major alternatives can be found in Theory and Practice, p. 690, pract var 13, 14, and 15, and in MCO 10, p. 386,

Position after Move No. 10

cols. 36-40. After 11...e5 12 Qc2 Re8, White must play e4 and weaken d4, as Black logically plays for pressure on c4. After 13 e4, Black can sacrifice with 13...c4 14 B:c4, ed 15 cd Na5 16 Bb3 (B:f7+ is unsound) Q:c2 17 B:c2 N:e4 18 Re1 Bf4= (Averbach-Ivkov, Belgrade 1956).

To back up, after 12 Qc2 Re8 13 N:e5 N:e5 14 de Q:e5 15 f3 Be6 16 Re1 Rad1 (Gligoric-Euwe Leipzig 1960), with play for both sides. A feature of many of the games in this line is h5 by Black to restrain White's central advance, coupled with a flank attack on the queen-side.

It should be noted that the above lines are by no means exhaustive, but are intended only as examples of purposeful play for each side.

FROM THE BOOKSHELF

W. H. COZENS, THE KING-HUNT IN CHESS (Sterling Publishing Co., Inc., 419 Park Ave. So., New York, NY 10016, 1971), 120 pp., hardbound, intro. by Irving Chernev, 45 games (Eng. Desc.), 92 diagrams, \$3.95.

For sheer fun it is hard to think of a better chess book than Cozen's The King-Hunt in Chess, a relatively new book that sparkles with the aggressive exciting chess that delights all of us. The book may not teach anyone how to take advantage of hanging pawns, or how to convert a queen-side pawn majority to a victory in an end-game, but if the reader wants to see bold sacrifices and to improve his tactical chess, Cozen's book is for him.

Cozens defines a "king-hunt" as not just a simple attack on a king, but one in which a king is forced to march from its castled (or uncastled) sanctuary and is pursued over the board to the ultimate kill. It is not uncommon in the book to see a king forced to move fifteen or twenty times in succession before succumbing on a square on the opponent's side of the board.

Naturally, many of these games are from the nineteenth century, but ten games from the 1950's and 1960's put the lie to the theory that attacking play is dead in modern chess. Fischer's famous win over Donald Byrne in 1956 is included in the volume—a sure delight for those unfortunate enough not to know it already.

Irving Chernev, in an introduction to the volume, writes: "While The King Hunt stresses entertainment, there is no lack of instruction, as the reader is bound to learn a great deal about the art of direct attack. . . . The book will please and gratify the reader, and even more to the point, greatly increase his attacking skill.

The book is attractively bound and is of a handy size for ready use. The diagrams are frequent and clear, and have a unique feature: the winning side is always shown at the bottom of the diagram, to facilitate matters for those of us who, to increase our self-confidence, always set up the pieces with the ultimately victorious pieces on our side of the board!

The book also includes a passage from Browning which is ironically appropriate to a king's final position in most of these games. "That king/ Treading the purple calmly to his death/
. . . And him sittin' alone in blood while friends/ Are hunting far in the sunshine." /ECM/

LATEST OFFICIAL USCF RATINGS OF CCCA MEMBERS

The following are the official USCF ratings of all CCCA members (as of 1 October) through the "USCF Rating Supplement," published in the October issue of Chess Life & Review. Please notify this magazine of any additions or corrections.

SENIOR MASTER 2400 & above, MASTER 2200-2399, EXPERT 2000-2199, CLASS A 1800-1999, CLASS B 1600-1799, CLASS C 1400-1599, CLASS D 1200-1399, CLASS E Below 1200. * indicates provisional rating based on 10-25 games. Such ratings are less reliable than established ratings. # indicates rating based on 4 to 9 games. Such ratings are highly unreliable. Players who have played less than 4 games are not listed.

Total number of CCCA members with USCF ratings: 227 (40%).

TOP TEN: (1) J Acers 2355, (2) J Iwashita 2183, (3) G Pickler 2115, (4) A Hanak 2099, (5) W Orr 2089*, (6) G Rey 2054, (7) L Bignami 2051, (8) M Weber 2050, (9) H Mohrmann 2049, (10) S von Oettingen 2042.

BECHTEL CC (4): I Gines 1674#, A Hanak 2099, A Saguissag 1848, R Saguissag 1932. BERKELEY CC, INC. UC DIV. (60): R Alexander 1837, L Bignami 2051, A Bodine 1642*, D Ceponis 1551#, R Clipson 1703, M Cooper 1773, S Cross 1944, E Delgado 1271*, M Donald 1345*, P Enright 1869, C Ensey 1392*, R Ettelson 1034*, S Felgar 1617*, G French 1774*, G Garcia 1640, J Gardner 1829, R Guzman 1593#, K Halligan 1627#, R Hansen 1833, G Harcus, Jr. 1296, G Harris 1762*, R Jaeger 1688#, D Kanzaki 1455#, J Kasprk 1412*, K Kishore 1757*, P Klimek 2000, M Koblentz 1505#, K Kuniyuki 1549*, E Kupka 1801, F Leffman 1692, D Liebhaber 1680, M McNown 1723, D Malcolm 1314#, M Maloney 1638, H Mayer 1995, P Mei 1210#, E Meyers 1699, D Miller 1213#, P Neville 1842, R Newman 1567*, S Norton 1545#, J Osborne, Jr. 1906#, L Petty 1619, P Prochaska 1719, D Rapoport 1948, G Rey 2054, W Robbins 939#, K Roberson 1624, N Rosen 1743, D Santos 1828, R Segal 1714*, R Shiflett 1687, J Sjogren 1767, G Smith 1805*, P Stokes 1648#, I Strauss 1517*, L Sutton 1650#, J Toulouse 1822, M Werner 1847#, J Wu 1393*. CASA ALVARADO CHESS CENTER (16): D Anderson 1419, J Anderson 1363, R Atkinson 1542, D Draper 1802, M Ewell 1995, G Gerstl 1441, K Grover 1259*, P Grover 1377, A Guin 1475#, S Hand 1332, D Henry 1664, K Howes 1643, B Lainson 1998, D Maxwell 1972, K Roberson 1624, C Tanaka 1763. CHABOT COL. CC (2): R Weinberg 1791*, T Wilkerson 1550#. COL. OF THE SEQUOIAS CC (1): C Fotias 1632. CONCORD CC (10): J Fosaaen 1921, G Garcia 1640, R Guzman 1593#, G Harcus 1296, K Miller 1826#, J Moore, Jr. 1634*, W Noble 1598, F Ulrich 1699, C Vail 1602, J Weiler 1555. DVI CHESS INT. GROUP (2): H Chappel 1928, C Comstock 1974. EVERYMAN ATHLETIC CLUB CC (2): L McLaughlin 1268*, J Rowell 1830. FREMONT CC (3): W Orr 2089*, R Pellerin 1620#, H Poschmann 1695. HAYWARD CC (5): E Bartholomew 1613, L Hopkins 1329#, K Lawless 1808, E McNally 1870, J Rodgers 1622*. LIVERMORE CC (11): H Barnett 1710, G Boer 1826, C Giallanza 1145#, K Giallanza 1419, W Nelson 1843, G Roust 1767, B Rozsnyai 1589*, J Shearer 2012, D Smith 1818*, K Trigger 1385*, J Willows 1531#. MARIN CC (6): K Burns 1578, T Hansen 1438#, D Hubbard 1357#, B Kraft 2004, J Nitzberg 1335#, L Post 1741. MARTINEZ CC (2): R Nace 1684*, R Swanson 1960. MONTEREY PEN. CC (3): R Atkinson 1542, M Ewell 1995, W Kennedy 1469. OAKLAND CC (17): J Acers 2355, T Anderson 1517*, C Barnes 2017, M Costa 1729, R Cuneo 1721, J Kasprk 1412*, G Kobliska 1682*, L Lane 1229#, M Lee 1516*, R Lee 1454, C Maddigan 2007, E Meyers 1699, R Ng 1834, S Quen 1946, F Warren 1341#, G Weber 1756, M Weber 2050. ORINDA CC (5): A Boyd 1620*, D Campbell 1714, J Jaffray 1932, D Sherman 1478#, D Stone 1788*. PIEDMONT HILLS H. S. CC (3): J Brittain 1457*, A Mock 1717, K Terry 1635*. RICHMOND CC (3): P Brown, Jr. 1529, D Claudio 1707#, L Trottier 1531. SAN JOSE CC (35): W Adams 1892, R Belcher 1353#, T Byrne 1786#, M Carney 1440*, A Critchlow 1787, F Crofut 1833, R Delashmutter 1622, M Gazse 1769, D Gordon 1608#, R Gordon 1884, J Iwashita 2183, B Matzner 1902*, R Merritt 1255#, B Millar 1468, B Mills 1715, H Mohrmann 2049, T Montemurro 1682, E Mueller 1825, R Mullins 1395*, D Myers 1686, L Nezhni 1892, F Penoyer 1786, J Peterson, Sr. 1592, J Peterson, Jr. 1972, E Rosenthal 1559, L Ross 1826, R Roubal 1827, E Shoemaker 1457#, G Temme 1734, J Thomas 1502, M Tomey 1512, J Weisickle 1863, C Whelan 1743, K Wiens 1483#, S Willett 1772*. SAN JOSE STATE CC (6): R Anderson 1328, T Grichubin 1370*, V Hidika 1603, T Montemurro 1682, P Schure 1722, J Watson 1539#. SANGER CC (1): W Myers 1691. SANTA ROSA CC (4): R Dusatko 1824*, C Falbo 1645, L Henderson 1874, S Kornher 1958. UC DAVIS CC (12): L Balics 1629, D Comini 1569, J Conner 1685#, T Dorsch 1882, F Garosi 1727, D Jacobson 1629, D Napoli 2011, D Olmstead 1820, K Olwell 1682*, G Pickler 2115, M Shifrine 1792, S von Oettingen 2042. UNIV. OF SANTA CLARA (3): M Clark 1325#, S Fujishin 1607#, G Griggs 1219#. VALLEJO CC (5): F Harris 1837, J Hug 1572, L O'Doan 1702, G Rasmussen 1884, B Smith 1411#, N Wood 2029. VISALIA CC (1): C Fotias 1632. WALNUT CREEK CC (6): S Bass 1815#, G Bigelow 1526, D Hall 1905#, D Jacobson 1629, S Mujahed 1593, C Vail 1602.

CCCA AFFILIATE DIRECTORY
(Current number of CCCA affiliates: 42; members: 559.)

For information on affiliation to the CCCA and its benefits, contact this magazine (address and telephone number on page 2). THE FOLLOWING ARE NOT MAILING ADDRESSES.

*

- ALAMEDA CC: M night; 3238 Thompson Ave.
- ALAMEDA NAS CC: Alameda Naval Air Sta.
- ANTIOCH CC: Inactive at present.
- BECHTEL CC: W 7:30 p.m.; 11th Fl. Conf. Rm., 50 Beale St., San Francisco.
- BERKELEY CC: F 7-11 p.m.; Palm Rm., Berkeley Cen. YMCA, 2001 Allston Wy.
- BERKELEY CC, UC DIV.: F 7-11 p.m.; Palm Rm., Berkeley Cen. YMCA, 2001 Allston Wy.
- BERKELEY LIVE OAK CHESS GROUP: M 7-10:30 p.m.; Live Oak Rec. Cen., 1301 Shattuck Ave.
- BERKELEY SEN. CEN. CHESS GROUP: TU 9 a.m.-12 m.; Sen. Cen. of Berkeley, 1849 University Ave.
- CAPITOL CITY CC: W 7:30-11 p.m.; Clunie Clubhouse, Alhambra & "F" Sts., Sacramento.
- CASA ALVARADO CHESS CEN.: TU-F 4:30-10 p.m., SA-SU 2-10 p.m.; 467 Alvarado St., Monterey.
- CATERPILLAR CC: Inactive at present.
- CHABOT COL. CC: TUTH 11 a.m.; Rm. 830, 25555 Hesperian Blvd., Hayward.
- COL. OF THE SEQUOIAS CC: TU 11:30 a.m.-1 p.m.; Student Union, Mooney Blvd., Visalia.
- CONCORD CC: F 7:30-11; Concord Sen. Citizens Cen., 2974 Salvio St.
- DVI CHESS INTEREST GROUP: MF 7-9:30 p.m.; Deuel Vocational Inst., So. Kasson Rd., Tracy.
- EVERYMAN ATHLETIC CLUB CC: TU night; Fresno.
- FREMONT CC: TH 7-11 p.m.; Cen. Pk. Comm. Cen., 40204 Paseo Padre Pkwy.
- HAYWARD CC: MF 8-12 p.m.; HARD Bldg., Palma Ceia Pk., Miami Ave. & Decatur Wy.
- LIVERMORE CC: 1st & 3rd F 7:30-11 p.m.; Carnagie Bldg., 4th & "J" Sts.
- MARIN CC: TH 8:00 p.m.; Tamalpais Valley Meth. Ch., Ash & Marin Ave., Mill Valley.
- MARTINEZ CC: M 7:30 p.m.; Sen. Citizens Cen., 1111 Ferry St.
- MECHANICS' INST. CC: M-F 9 a.m.-11 p.m., SA 9 a.m.-12 p.m., SU & HOL. 9 a.m.-10 p.m.; Mechanics' Inst. Bldg., 4th Fl., 57 Post St., San Francisco.
- MONTEREY PEN. CC: TH 7:30 p.m.; Casa Alvarado Chess Cen., 467 Alvarado St., Monterey.
- OAKLAND CC: F 7-11 p.m.; Multipurpose Rm., Lincoln Elem. Sch., 225 Eleventh St.
- ORINDA CC: TH 7:30 p.m.; St. Stephen's Epis. Ch., St. Stephen's Dr. & Via Las Cruces.
- PIEDMONT HILLS H. S. CC: M-F 2:30-4 p.m.; Rm. 14, 1377 Piedmont Rd., San Jose.
- PLEASANT HILL CC: F 7:30 p.m.-2 a.m.; Fird House, 233 Gregory Ln.
- RICHMOND CC: F 7 p.m.; Our Lady of Mercy Ch., 301 W. Richmond Ave., Pt. Richmond
- ST. MARY'S COL. CC: St. Mary's Col. of Calif., Moraga.
- SAN JOSE CC: W 7:30 p.m.; San Jose Cen. YMCA, 1717 The Alameda.
- SAN JOSE STATE COL. CC: F 12 m.-4:30 p.m.; Almaden Rm., Student Union.
- SAN QUENTIN CC: Calif. State Prison.
- SANGER CC: Caffe Midi, 5048 No. Maroa Ave., Fresno.
- SANTA ROSA CC: F 7-10 p.m.; Santa Rosa Jr. Col., 1501 Mendocino Ave.
- UC DAVIS CC: M 7-11 p.m.; Games Rm., Memorial Union.
- UNIV. OF SANTA CLARA CC: M 4-7:30 p.m.; Red Lounge, Benson Memorial Cen.
- VALLEJO CC: F 7:30 p.m.; Vallejo Comm. Cen. Bldg., 225 Amador St.
- VISALIA CC: F 7:30 p.m.; Rec. Pk. Bldg., 345 No. Jacob St.
- WALNUT CREEK CC: TU 7:30 p.m.; Sen. Citizens Hospitality House, 1385 Civic Dr.
- WEST HILLS COMM. CC: 1st & 3rd W 7-9:30 p.m.; Student Cen., West Hills Coll, 300 Cherry Ln., Coalinga.
- WESTERN ADDITION CC: TU 7:30 p.m.; Family Serv. Agcy., 1010 Gough St., Cath. Hill, San Francisco
- O. B. WHALEY ELEM. SCH. CC: Lib., 2655 Alvin St., San Jose.

CALPOINTS FOR CENTRAL CALIFORNIA: FINAL TOTALS

All Calpoints accumulated through 30 September, the final date for the 1971 Championship, have been totaled in this system to determine Central California's finalist in the California State Chess Championship. For upcoming tournaments awarding Calpoints, see page 3.

*

Top Ten

CRAIG N. BARNES	37.63	Dennis G. Fritzinger	8.00	Julio A. Kaplan	6.00
Dennis L. Waterman	27.00	Charles Pardini	7.00	Julius H. Loftsson	6.00
Michael R. Ewell	8.75	Ronald J. Gross	6.00	Four-way tie for 10th place	
Bernard Lanson	8.75				

***CRAIG N. BARNES,
CENTRAL CALIFORNIA'S STATE CHAMPIONSHIP FINALIST***

Craig N. Barnes, of Berkeley, will be Central California's finalist in the California State Chess Championship, to be held in December. Barnes won the right to compete since he scored more Calpoints than any other player in Central California.

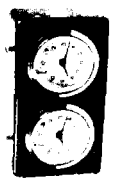
At sixteen, Barnes has been playing chess since 1968, first on a junior high school team in San Francisco. Upon moving to Berkeley, he played in his first organized event, a small junior tournament in January 1969, in which he placed first in his age group. Since then he has played in almost every local tournament, usually winning a prize. He has improved rapidly, starting in Class E and finally obtaining his expert rating in March 1971. He attributes his improvement primarily to "experience and natural talent, rather than 'books.'"

Some of his recent successes include being 1970 CCCA Junior Champion and Runner-Up 1971 CCCA Adult Champion. He also had good showings in the 1971 US and Canadian Opens.

In addition to his playing, Barnes devotes time to the organizational end of chess. He is Publicity Director of the Oakland Chess Club and is a contributor to Junior Chess magazine. He is interested in mathematics and computers, and various games besides chess. His foremost ambition is to become a strong grandmaster and expects to be a USCF Master within a year.

NEAT CCCA GENERAL MEMBERSHIP MEETING: Friday, 7 January, 8:00 p.m., Berkeley Chess Club, Palm Room, Berkeley Central Y.C.A., 2001 Allston Way, Berkeley. Every member of the CCCA, i.e., every person who is certified by the appropriate officer of a chess club or organization affiliated to the CCCA (listed on page 15) to be a member or officer of the affiliate, has full privileges of debate and voting. Non-members are welcome.

CHESS CLOCKS: Lowest price in the US. No waiting weeks for delivery. BHB Plastic, light brown plastic case; 6" x 3" x 1½", 60-day guarantee. The world standard for dependable quality and durability at a moderate price. Used at the most recent Interzonal Tournament. THE CCCA'S UNBEATABLE LOW PRICE IS ONLY \$13.50. By immediate pickup from Leonard F. Trotter (5315 MacDonald Avenue, El Cerrito 94530; 233-1595) or Martin E. Morrison (address and telephone number on page 2). By mail from Mr. Trotter only (add \$1 postage and insurance for addresses within Central California).



POSTMASTER: SEND PS FORM 3579 TO
Central California Chess Association
Post Office Box 1622
Oakland, California 94604
Telephone: (415) 582-1973

William Adams
Box 1104
San Jose CA 95108

NEXT AFFILIATE ASSESSMENTS DUE: 1 December with a grace period of two weeks allowed for payment. Appropriate officers of each affiliate should send 20¢ per club member, along with a list of the names and addresses of the affiliate's members, to the CCCA Treasurer, Mr. Trotter (address and telephone number in column one). Fines as much as \$2 will be levied for delinquent payment without a valid excuse.



USCF MEMBERSHIPS AT A 20% DISCOUNT, ONLY FOR CCCA MEMBERS OR THOSE PLAYERS JOINING THE USCF AT A CCCA-SPONSORED TOURNAMENT: \$4 (under 21), \$8 (21 and over) per annum, new or renewal. Others may join at the regular rate of \$5 or \$10 respectively. Send memberships to the CCCA Treasurer, Mr. Trotter (address and telephone number in column one). Benefits include a monthly Chess Life & Review subscription, eligibility for a USCF (national) chess rating, and discounts on chess books and equipment.

CSCF MEMBERSHIPS: \$2.50 (under 21), \$5 (21 and over) per annum from the CSCF Treasurer, Dr. Ralph R. Hultgren, 1501 LeRoy Avenue, Berkeley 94708. Benefits include a bimonthly California Chess Reporter subscription, use of a CSCF Rating Card (to keep track of your approximate updated USCF rating), and eligibility for Calpoints to determine Central California's finalists in the California State Chess Championship. ALL CHESS PLAYERS ARE STRONGLY URGED TO BECOME MEMBERS OF THE UNITED STATES AND CALIFORNIA STATE CHESS FEDERATIONS (USCF AND CSCF).

ROLIFLEX CHESSBOARDS: Brown and ivory squares on tough base, which can be rolled or folded to carry, yet flattens out for play. ONLY \$1.50 (2" squares, vinyl) OR \$2 (2" or 2½" squares, vinyl and cloth). By immediate pickup or by mail (add 25¢ per board for postage) from Martin E. Morrison (address and telephone number on page 2).

