

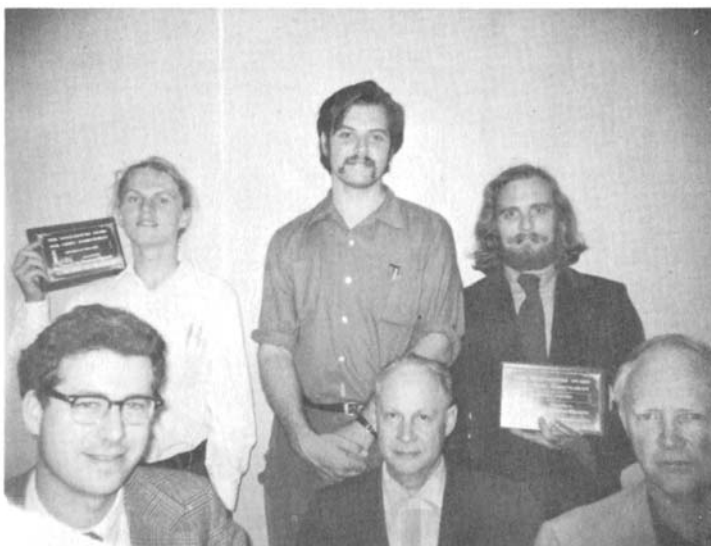
THE CENTRAL CALIFORNIA CHESS VOICE



CENTRAL CALIFORNIA'S CHESS MAGAZINE
and
OFFICIAL ORGAN
of the
CENTRAL CALIFORNIA CHESS ASSOCIATION
(An Authorized Affiliate
of the United States Chess Federation)

MARTIN E. MORRISON
Member, International Association of Chess Reporters (AIPE)
. ELWIN C. MEYERS

August-September 1972
Whole No. 28



ORGANIZERS AND WINNERS OF THE RECORD-SHATTERING SAN FRANCISCO INTERNATIONAL HILTON OPEN. George Koltanowski (insert); Martin E. Morrison (seated, left), Tournament Director; Alfred Hansen (seated, right), Treasurer. Boris Popov (seated, center), 1st A; Jon A. Sjogren (standing, left), 1st B; Peter C. Prochaska (standing, center), 2nd B; Ronald J. Byrne (standing, right), 1st C. The tournament drew 210 players to compete for a \$1500.00 prize fund. Details of the tournament will be found in the "News" section. (Photographs courtesy of Richard R. Shorman, CCCA Publicity Director.)

Martin E. Morrison
Central California Chess Association
Post Office Box 1622
Oakland, California 94604, USA
Telephone: (415) 582-1973

Send change of address notices, undeliverable copies, orders for subscriptions, and other mail items to the address above. Postmaster: Send PS Form 3579 to the address above.

Chess Voice is published bimonthly by the Editors of the CCCA. EVERY MEMBER OF THE CCCA, I. E., EVERY PERSON WHO IS CERTIFIED BY THE APPROPRIATE OFFICER OF A CHESS CLUB OR ORGANIZATION AFFILIATED TO THE CCCA (listed on page 15) TO BE A MEMBER OR OFFICER OF THE AFFILIATE, receives mailed to his home a Chess Voice subscription, paid for in connexion with the payment of the affiliate's CCCA assessments in a distinct, voluntary, and independent act on the part of each individual member, the relation of subscriber being clearly understood and fully agreed to. Known office of publication: Campus Bancroft Building, Room 206, 2440 Bancroft Way, Berkeley, California 94704. Second-class postage paid at Berkeley, California.

The opinions expressed in Chess Voice are those of the Editors or of the respective contributors. They do not necessarily constitute an official policy of the CCCA or any of its affiliates.

NONMEMBER SUBSCRIPTIONS: \$2.00 per annum.

ADVERTISEMENTS: 5¢ per word per issue on any subject (classified advertisements), \$5.00 per eighth page per issue, \$20.00 per insert per issue (this cost is more than \$60.00 cheaper for mailing tournament circulars, etc., than postage costs alone).

CENTRAL CALIFORNIA OFFICIALS

ALL COMMUNICATIONS SHOULD BE REFERRED TO MARTIN E. MORRISON (ADDRESS AND TELEPHONE NUMBER ABOVE).

Central California Chess Association (CCCA)

Officers (Members of the Executive Board): Martin E. Morrison, Chairman and Editor; Saleh Mujahed, Secretary; Leonard F. Trottier, Treasurer; Robert B. Manners, League Director; Elwin C. Meyers, Editor; Richard R. Shorman, Publicity Director.

Standing Committees: Clock: Leonard F. Trottier, Chairman; Martin E. Morrison. Tournament and Club Relations: Martin E. Morrison, Chairman; Elwin C. Meyers (Standing Tournament Subcommittee); Harold L. Barnett, Everett L. McNally (Club Coördinator).

CCCA Championship Administrator: Hans Poschmann. School Chess Coördinator: Robert E. Pellerin. Intercollegiate Chess League of America Liaison: Martin E. Morrison (ICLA Regional Vice President-Far West, Central, Area). The CCCA serves in the position of intercollegiate chess league for the Far West, Central, Area of the ICLA. Postal Chess Director: Edward J. Delgado.

California State Chess Federation (CSCF)

Officers: Robert E. Burger, Vice President; Spencer H. Van Gelder, Secretary; Dr. Ralph R. Hultgren, Treasurer.

Directors: Central California: Elwin C. Meyers, Martin E. Morrison, Saleh Mujahed, William A. Myers, Jr., Gunnar H. Rasmussen, Chairman. Northern California: Alan Benson, W. Guthrie McClain, Raymond J. Conway, Henry Gross, Theodore Yudakufski.

Committees: Tournament, Central Section: Martin E. Morrison, Chairman, Elwin C. Meyers, William A. Myers, Jr.; Northern Section: W. Guthrie McClain, Chairman. Tournament Calendar: Martin E. Morrison, Chairman.

United States Chess Federation (USCF)

Officer-Director: Martin E. Morrison, First Vice President, Region VIII-Pacific.

Directors: William T. Adams, William A. Bills, Robert E. Burger, Peter Dahl, Anthony J. DiMilo, Paul T. Hubbard, Chris A. Fotias, Russell A. Freeman, Dennis G. Fritzingler, Dr. Benjamin L. Gross, Henry Gross, George Koltanowski (Life), Eugene S. Kien, W. Guthrie McClain, Robert R. McIntyre, Elwin C. Meyers, John R. Moore, Jr., Saleh Mujahed, William A. Myers, Jr., George B. Oakes, Hans Poschmann, Gilbert Ramirez, Gunnar H. Rasmussen, Alfred Raymond, Philip D. Smith, Leonard F. Trottier, Spencer H. Van Gelder, Sergius von Oettingen, Max B. Wilkerson, Jr., Curtis R. Wilson, Theodore Yudakufski.

Committees: Tournament Administration: George Koltanowski, Chairman. Tournament Director Certification: George Koltanowski, Martin E. Morrison (Chairman, USCF Official Guide Subcommittee, and Member, Rules Subcommittee).

***THE COMPLETE, OFFICIAL STATE CALENDAR AND CLEARINGHOUSE
FOR NORTHERN AND CENTRAL CALIFORNIA TOURNAMENTS
OFFICIALLY SANCTIONED BY THE CALIFORNIA STATE CHESS FEDERATION***

Purpose: To avoid conflict, to publicize, and to promote attendance at California tournaments.

Method: Chess Voice has charge of data and coordinates tournament dates.

Procedure: Tournament organizers submit to the Editors (address and telephone number on page 2) their proposed tournament dates as much in advance as possible (annual dates must be submitted each year). Tournaments free of conflict are listed without charge.

Important Note: Neither this published Calendar nor the "Tournament Life" section of Chess Life & Review should be relied upon by organizers for finding clear dates, as data often change substantially between issues, and the clearinghouse maintains data not found in the Calendar.

Calpoints: To determine Central California's two qualifiers to the California State Chess Championship are awarded at all USCF-rated weekend tournaments sponsored by the CCCA or its affiliates (Calpoint tournaments are capitalized). Players must be members of the CSCF before entering a Calpoint tournament in order to acquire points for that tournament.

Listing: Includes date, title, site, restrictions, total prize fund, entry fee, beginning of registration, tournament director. Only USCF-rated tournaments or sections of tournaments are listed.

Further Details on Tournaments Listed: Contact the Editors.

*

- 8/5-6 CCCA'S HAWYARD REGIONAL, MEEK EST. MANSION, MEEK PK., 240 HAMPTON RD., \$500, \$5 (\$10 M/EX), 10:30 A.M., MORRISON, MEYERS
- 8/13-25 US Open (A Nat. T.), Shelbourne-Dennis Hotel, Atlantic City, NJ, \$6500, \$35, 10 a.m., Koltanowski
- 8/26-27 SALINAS VALLEY OPEN
- 9/2-4 Cal. Open (A State T.), Seaside Pk., Ventura, \$1700, \$15+CSCF, 8 a.m., Kashdan
- 9/16-17 CCCA'S PACIFIC OPEN, TRAVELODGE-AT-THE-WHARF, 250 BEACH ST., \$1150, \$10 (\$15 M-A), 10:45 A. M., MORRISON, MEYERS
- 10/7-8 CCCA'S SAN LEANDRO CENTENNIAL-BICENTENNIAL, BANCROFT JR. H. S., CAFETERIA, 1150 BANCROFT AVE., \$500, \$5 (\$10 M/EX), 10 A. M., MORRISON, MEYERS
- 10/21-22 FIGHT OF THE BUMBLER B, CASA ALVARADO CHESS CEN., 467 ALVARADO ST., MONTEREY, UNDER 1800, CASH, \$10, 9 A. M., YUDAKUFSKI
- 10/21-23 Mech. Inst. Veteran's Day, 57 Post St., San Francisco, \$1100, \$17, 11 a.m., Hoppe
- 10/28-29 CCCA'S WEST COAST OPEN, STUD. UN. BLDG., 4TH FL., TELEGRAPH AVE. & BANCROFT WY., UNIV. OF CAL., BERKELEY, \$1100, \$7.50 (\$15 M-A), 10 A. M., MORRISON, MEYERS
- 11/23-26 American Open (A Nat. T.), Nautilus Rm., Miramar Hotel, Ocean Ave. & Wilshire Blvd., Santa Monica, \$3500, \$25 (\$20 under 21, \$15 under 18), 8 a.m., Bragg
- 12/2-3 CCCA'S SAN FRANCISCO BAY AREA AMATEUR OPEN, OAKLAND CEN. YMCA, 2101 TELEGRAPH AVE., UNDER 2000, \$600, \$7.50, 10 A. M., MORRISON, MEYERS
- 12/2-3 MONTEREY CO. CHAMPIONSHIP, CASA ALVARADO CHESS CEN., 467 ALVARADO ST., MONTEREY, YUDAKUFSKI
- 1/6 CCCA'S 1-DAY ROUND ROBIN, WALNUT CREEK REC. CEN., CIVIC DR., \$8 PER 4-MAN SEC., \$4, 9 A. M., SHORMAN
- 1/20-21 CCCA'S REGIONAL, \$500, \$5 (\$10 M/EX), MORRISON MEYERS
- 2/17-19 CCCA'S GRAND PRIX, STUD. UN. BLDG., 4TH FL., TELEGRAPH AVE. & BANCROFT WY., UNIV. OF CAL., BERKELEY, \$1750, \$15, 10 A. M., MORRISON, MEYERS
- 2/24-25 CHERRY TREE OPEN, CASA ALVARADO CHESS CEN., 467 ALVARADO ST., MONTEREY, CASH, \$7, 9 A. M., YUDAKUFSKI
- 3/11-16 Nat. Open (A Nat. T.), Stardust Hotel, Las Vegas, NV
- 3/31-4/1 CCCA'S SAN JOSE REGIONAL, CEN. YMCA, 1717 THE ALAMEDA, \$750, \$7.50 (\$12.50 M/EX), 10 A. M., MORRISON, MEYERS
- 4/28-29 CCCA'S WESTERN OPEN, STUD. UN. BLDG., 4TH FL., TELEGRAPH AVE. & BANCROFT WY., UNIV. OF CAL., BERKELEY, \$1000, \$10, 10 A. M., MORRISON, MEYERS
- 5/26-28 OFF. CLASS CHAMPIONSHIPS OF CAL. (A STATE T.), DEL WEBB'S TOWNEHOUSE, 2220 TULARE ST., FRESNO, \$1000, \$15+CSCF, 10 A. M., MORRISON, MEYERS. HELD IN CONJUNCTION WITH THE CLOSED CAL. STATE CHAMPIONSHIP & NORTH/SOUTH MATCH
- 6/9-10 CCCA'S REGIONAL, \$500, \$5 (\$10 M/EX), MORRISON, MEYERS
- 7/14-15 CCCA'S CHAMPIONSHIP OF CEN. CAL., STUD. UN. BLDG., 4TH FL., TELEGRAPH AVE. & BANCROFT WY., UNIV. OF CAL., BERKELEY, \$800 \$5 (\$15 M-A), 9:30 A. M., MORRISON, MEYERS

NEWS

The Record-Shattering San Francisco International Hilton Open

With chess so much in the news these days chess organizers are no longer so desperate to find tournament sites. The tables are turned: businessmen are beginning to come to organizers offering to host chess tournaments. So it was with the management of the San Francisco International Hilton. Not overlooking the generous offer of free playing space at a strategically located site, George Koltanowski and Martin E. Morrison, together with local organizers Alfred Hansen, Carl C. Barton, and Wilfred Goodwin, teamed up to put on "a new USCF prestige chess tournament for Northern California on 6-7 May. The result: all attendance records were broken for a USCF-rated tournament in Northern California since the 1961 US Open at San Francisco.

Although Kolty tended to be more moderate in his expectation of about 80 players, Martin Morrison and others were urging higher numbers of around 150. When tournament treasurer Alfred Hansen reported that the final pre-entries had reached 125, it became clear to all the organizers that they had a record-shattering event on their hands. On the first day of the tournament the total number reached 210, to the mixed delight and anticipation of tournament director Martin Morrison and his assistants, Elwin C. Meyers and H. Richard Irwin.

Among the numerous surprises of the tournament was the number of players joining the USCF for the first time to play in their first USCF-rated event. True, publicity in the San Francisco Chronicle and the Central California Chess Voice especially welcomed new members in hopes of drawing upon the large pool of non-USCF chess players in the area. Yet the unrated section climbed to a whopping 85 players, 52 of whom were new USCF members, to make it the largest section of the tournament.

In another experiment, urged most enthusiastically by Kolty, Saturday evening was set aside for a banquet with the special intention of easing the "chess widow syndrome." In fact many of the players' wives did join in the light-hearted, amicable banquet of 54 diners. After-dinner entertainment consisted of a half-hour monologue delivered by Kolty--the Cavett or Carson of the chess world. Kolty kept the banqueters enchanted with stories from his wide repertoire--the now classic Tale of the Nude Chess Master among others--and concluded with his famous Knight's Tour. Although not attempted for some years, the Tour proved that the master had lost none of his great mental capacity.

Even though difficulties might be expected in dealing with such a large number of players, director Martin Morrison was often heard to remark that the tournament had gathered together an unusually cooperative and amicable group of players, to make it one of the most untroubled events he had ever directed.

Because of the unexpectedly large turnout, the prize fund was increased almost three times to make it the most munificent tournament held in Northern California within recent memory. In another demonstration of the increasing amount of attention chess is receiving, the San Francisco Chronicle donated four magnificent plaques to be awarded to the top finishers in each section. A complete list of the prize winners follows.

Class A: Boris Popov (1st), $4\frac{1}{2}-\frac{1}{2}$, \$200.00 plus plaque; Roger Gabrielson, David Obstfeld, Alfred L. Raymond, John Smail (2nd-5th), 4-1, \$47.50 each.

Class B: Jon A. Sjogren (1st), $4\frac{1}{2}-\frac{1}{2}$, \$150.00 plus plaque; Peter C. Prochaska (2nd), $4\frac{1}{2}-\frac{1}{2}$, \$150.00; James V. Jirousek, Frederick-W. Scholz, Stewart E. Scott, Murray Turnbull (3rd-6th), 4-1, \$22.50 each.

Class C: Ronald J. Byrne (1st), 5-0, \$200.00 plus plaque; Howard L. Cockerham, Peter Freier, Michael A. Maloney, Peter W. Stokes (2nd-5th), 4-1, \$47.50 each.

Unrated: Romeo E. Rodriguez (1st), 5-0, \$100.00 plus plaque; Robert W. Morrison (2nd), 5-0, \$100.00; Nicholas Quirarte (3rd), $4\frac{1}{2}-\frac{1}{2}$, \$50.00; Michael P. Cardillo, Douglas Clyde, Manelica Gindalf, Alan Hawkins, Michael G. Mason, Donald Mayeaux, David Olson, Richard Stanley, John B. Teselle, Joseph J. Tracy (4th-13th), 4-1, \$6.50 each.

*

State Federation Plays, Dines, Meets

Annually over the Memorial Day Weekend in Fresno, located midway between the Los Angeles and San Francisco-Oakland Metropolitan centers, players from throughout the state gather for the California State Chess Federation's Congress. During their sojourn this year participants competed in the Official Class Championships of California, including the widely famous North-South Match (played in the early days by telegraph), dined at the CSCF Banquet, and debated at the business meeting of the State Federation.

CASA ALVARADO CHESS CENTER . . . In an active spring season three tournaments were hosted under games director Theodore Yudakufski. March and April marked play in the 1972 March Anniversary of Chess Champions Tournament. Michael R. Ewell, Alan Gwin, John Kornichuk, and Sam Gales topped their groups in the 24-player event. . . . In the April and May Kings' and Queens' Caissa Corralvaly, restricted to players rated below 1500 or unrated, John Kornichuk, followed by Gerard Gerstl and Luther Hert, led a field of 16. . . . Stephen W. Smith topped the Presidio of Monterey 1972 Spring Ratings Tournament held on 12-13 May in association with the Presidio of Monterey Service Club. Six USCF members participated. TY

CONCORD CC . . . Richard Kelson won the CCCA's Contra Costa Weekly Regional II with a point lead on his nearest competitor. Steen S. Jensen was second at 2½ points. Fifteen players competed under the direction of John R. Moore, Jr.

FREMONT CC . . . Jon D. Fox is the club's new champion from competition in a seven-player tournament. . . . The Knock-out Tournament for the Ebony Rook ended in a game between Hans Poschmann and Ventura Negrete. Poschmann emerged as the winner. HP

STOCKTON CC . . . The fourth in a series of USCF Rating Tournaments was held in March and April. Robert R. McIntyre, the club's tireless president and director, won the 11-player event 6-0. Following at 4-2 were Garnet Punao, Dave Callaway, and Robert Leigh. . . . A double round robin among the top four performing players of the club, based on play in the first years rating tournaments, ended in a tie between McIntyre and Leigh; third was Norris Shultz, and fourth was Punao. . . . The club's Fifth Rating Tournament was won by Wallace Condon with a 6-0 mark. Second place was Tibor Horvath, 5-1. RRM

UC DAVIS CC . . .



Von Oettingen

Von Oettingen Is Davis Champion

Serge von Oettingen won the 1972 Davis Championship with a score of 6-2. This victory in a tournament which stretched over three months was particularly significant because every strong player in the area competed.

The most startling result of the tournament was William Hamaker's second place finish with 5½-2½. Hamaker started the tournament

rated next to last. His result should skyrocket his rating by 160 rating points and move him from class B to a high A rating.

In section B of the tournament Paul Taylor finished first with 5½-1½ followed by Gene Lee with 5 and Jeff Dasteel with 4½.

In section C Richard Roach won with 5-1 while Pobert Rice and Jeff Purvis had 4.

Von Oettingen, who also directed the tournament, was once more gratified that seven players competed for the first time and joined the US Chess Federation.

The tournament winner's sole defeat came at the hands of Hamaker, who displayed coolness and solidity in a constantly challenging game.

Thomas G. Dorsch won the club's 2nd Knock-out and Swiss, 4-0. Second was William M. Alexander; First Unrated, Marvin F. Gilbert. Thirteen player competed 22-23 April.

NEWS NOTES

CALIFORNIA ORGANIZERS ARE VERY MUCH ON THE AIR AND IN PRINT WITH NEWS OF THE SPASSKY-FISCHER MATCH. Isaac I. Kashdan, President of the California State Chess Federation, is reporting from Iceland for the Associated Press and the Los Angeles Times News Service. Frank Brady is also serving as a working chess journalist in Iceland. In the San Francisco Bay Area, Martin E. Morrison, USCF First Regional Vice President, is reporting for ABC-affiliate KGO-Radio, and George Koltanowski, Chess Columnist for the San Francisco Chronicle, is reporting for KQED, the area's educational TV station. Both Mr. Morrison and Mr. Koltanowski are advertising a "USCF Chess Kit" to interest the general public in USCF membership. USCF President Leroy W. Dubeck estimates that such promotion may yield 2000 more USCF members in California.



CHARLES J. VAIL



LEW M. WARDEN

CHESS AND POLITICS IN CALIFORNIA . . . Two well-known chess players threw their hats into the ring for their parties' nominations in the 6 June California Primary Election. Both were victorious and will stand for election in the November General Elections. Charles J. Vail, member of the Berkeley and Walnut Creek Chess Clubs, will seek election to the 10th Assembly District, and Lew M. Warden, Jr., member of the San Leandro Chess Club, will stand for the 8th Congressional District.

(Continued on page 7.)

EVANS ON CHESS

Turning The Tables

By LARRY EVANS, International Grandmaster

A player must be ever alert since chess offers sudden reversals of fortune. Here are two games from the 1972 USA Championship illustrating this doctrine of the second chance. In the first I was ready to resign, but got a gift; in the next my opponent was ready to resign, but refused my gift.

No. 112. Feuerstein—Evans. King's Indian Defense.

1 Nf3 Nf6 2 g3 g6 3 d4 Bg7 4 Bg2 0-0 5 0-0 d6	Qc7 19 Nf3 Rac8 20 h4 Nb7 21 Nd4 B:c4!?	22 Ne6
6 c4 Nc6 7 d5 Na5 8 Nfd2 c5 9 a3 b6 10 b4 Nd7	Ne5 23 f4 (b) N:c6 24 dc Na5 25 R:c4 N:c4	26 Nd5?
11 Ra2 Nb7 12 Bb2 B:b2 13 R:b2 cb 14 ab a5 15	(c) Qa7 27 c7 (d) R:c7 28 N:c7 Q:c7 29 Kh2 Qe5 30	
Nc3 ab 16 R:b4 Nbc5 (a) 17 Qc2 Ba6 18 Rfb1	Qa4 d5 31 e4 de 32 Rb5 Qc6 33 Qb4 Ra8 34 resigns	

(a) Correct is 16...Na5, followed by ...Ba6.

(b) Simpler is 23 R:c4 N:c4 24 Nb5 Qd7 25 Q:c4, etc.

(c) 26 Nb5! wins outright.

(d) Now he sees 27 Q:c4? b5+, winning the queen, but 27 N:e7+ Q:e7 28 Q:c4 offers drawing chances.

No. 113. Evans—Lombardy. Sicilian Defense.

1 e4 c5 2 f4 Nc6 3 Nf3 d6 4 g3 g6 5 Bg2 Bg7 6	31 c3 Rd8 32 Qc4 Nf3 33 Q:c8 Rd:c8 34 Re3 Ng5 35
0-0 e6 7 d3 Nge7 8 Nc3 0-0 9 Be3 b6 (a) 10 d4	b4 Rc7 36 h4 Ne6 37 Rd5 Ra8 38 Bh3 Ra2 39 Red3
Ba6 11 Rel e5 12 fe cd 13 N:d4 N:d4 14 Q:d4	Nd4 40 R:e5 Ne2 41 Rc5 Rca2 42 Bf1 Nc1 43 Re3 Rc2
B:e5 15 Qa4 Bb7 16 Rad1 a6 17 Qb3 b5 18 a4	44 Ra5 Rd7 45 Rd5 Ra7 46 c4 Raa2 47 b4 Rab2 48
Bc6 19 ab ab 20 Kh1 b4 21 Q:b4 Bb8 22 Qa3 Ra8	Rf3 (b) Ne2 49 Rd8+ Kg7 50 Rd7 Kgl 51 Rf:f7 N:g3+
23 Qb3 Qa5 24 Bb6 Qa6 25 Bf1 Qc8 26 Bd4 Rb8	52 Kgl N:f1 (c) 53 Rg7+ Kf1 54 Rdf7+ Kel 55 Ra7
27 Qa2 Nf5 28 B:e5 de 29 Nd5 B:d5 30 Q:d5 Nd4	Rg2+ 56 K:f1 Rbf1+ 57 Kgl (d) Kf8 58 R:h7 Kg8 59
	Rhg7+ Kh8 60 Rgd7 resigns

(a) Stronger is 9...Nd4.

(b) The win is 48 c5 Nb3 49 c6 Rcl 50 Kgl Nd2 51 Re2! R:f1+ 52 Kg2 Rdl 53 c7.

(c) 52...Rh2! forces a draw.

(d) Now White wins. Black, with split seconds left, checks with the wrong rook. 56... Rg1+ would have drawn by perpetual check, preventing the king from escaping to al.

***** (paid advertisement) *****

Box 15123, Dept. A-3

BALE'S

San Diego, CA 92115

HAND-TOOLED SET

4" hand-tooled onyx chess set
in a modern design

4" king, 2½" pawn, 8 lbs. ppd

ONLY \$16.45



Free color brochure of onyx
and chess sets

Satisfaction guaranteed or
money back

NEWS NOTES

(Continued from page 6.)

A FLURRY OF SIMULTANEOUS EXHIBITIONS WERE GIVEN BY LOCAL MASTERS, INCLUDING CRAIG N. BARNES, LARRY GILDEN, AND JOHN GREFE. Barnes gave a simultaneous at Berkeley High School on 9 June, including two games played blindfold. Only Siung-Ming Cheng held to a draw out of the 11 opponents. Prizes were donated by local merchants for the school's chess club membership drive. . . . On 10 June Larry Gilden, visiting from New York, played 26 boards at the Mechanics' Institute, losing to Fr. Eng and drawing with Eugene S. Lien, Elsie Lee, David H. Krause, and Joe Tracy. . . . In an exhibition at the Berkeley Chess Club John Grefe defeated all of 20 players, drawing only with Dr. Richard O. Hansen. The exhibition was held 7 July.

(Continued on page 9.)

BUSINESS PROCEEDINGS OF THE CCCA

By SALEH MUJAHED, CCCA Secretary



A regular meeting of the CCCA was held on Friday, 8 July 1972, at the Berkeley Chess Club, Berkeley Central YMCA, 2001 Allston Way, Berkeley. The meeting was called to order at 8:10 p.m. by the Chairman, Martin E. Morrison, the Secretary, Saleh Mujahed, also being present.

The total attendance for the meeting was as follows: Elwin C. Meyers (Berkeley CC); Martin E. Morrison (Berkeley CC, UC Div.); Hans Poschmann (Fremont CC); Harold L. Barnett, Wesley A. Nelson (Livermore CC); Leonard F. Trotter (Richmond CC); Robert B. Manners (San Leandro CC); Saleh Mujahed (Walnut Creek CC). Seven of 33 affiliates, nine members.

It was adopted by general consent that the minutes of the previous (14 April 1972) meeting be approved as published in Chess Voice, the CCCA's official

organ.

It was adopted by general consent THAT THE BELLARMINE CHESS CLUB, UPON THE APPLICATION OF BRANT CORENSEN, VICE PRESIDENT; THE MERRITT COLLEGE CHESS CLUB & CHESS TEAM, UPON THE APPLICATION OF BARTLEY F. BEVINS, PRESIDENT; AND THE STOCKTON CHESS CLUB, UPON THE APPLICATION OF ROBERT R. MC INTYRE, PRESIDENT, BE AFFILIATED TO THE CCCA.

It was adopted by general consent THAT THE AFFILIATION OF THE FOLLOWING CHESS CLUBS AND ORGANIZATIONS BE REVOKED, SINCE THEY HAVE CONTINUOUSLY FAILED TO PAY THEIR ASSESSMENT OR HAVE BECOME INACTIVE: CHABOT CHESS CLUB, DVI CHESS INTEREST GROUP, AND UNIVERSITY OF SANTA CLARA.

The Chairman noted the change of the San Jose State College Chess Club's name to the California State University, San Jose, Chess Club.

The Treasurer, Mr. Trotter, gave the following

REPORT OF THE TREASURER OF THE CCCA
FOR THE PERIOD 14 APRIL TO 3 JULY 1972

<u>Receipts.</u>	<u>Disbursements.</u>
Balance on hand 14 April 1972	\$ 142.33 USCF memberships transmitted ..\$ 60.00
Bimonthly assessment of affiliates	Editors' expenses 200.00
\$181.40	P. O. Box rent 2.70
Fines for late assessment payment	Clock sales retained 585.50 \$ 848.20
6.00	Balance on hand 3 July 1972
USCF memberships received ... 60.00	266.53
Charter Use 5.00	Total \$1114.73
Clock sales 720.00	Tournament Subcommittee Fund: \$100.00
	CCCA membership 3 July 1972: 605
	\$1114.73

The League Director, Mr. Nelson gave the following

REPORT OF THE LEAGUE DIRECTOR OF THE CCCA
1971-72 LEAGUE FINANCES AS OF 5 JULY 1972

<u>Receipts.</u>	<u>Disbursements.</u>
Entry fees	Assigned to 1970/71 season\$15.26
12 USCF @ \$3	Certificates of Merit \$11.18
9 Independent @ \$1.50	Postage \$4.08
5 Late USCF @ \$1.50	Assigned to 1971/72 season 51.24
\$57.00	Postage \$17.49 Telephone \$13.27
-----	Rating* \$12.99 71-72 Certificates \$7.49**
* USCF rating fees (includes 30¢ copying cost and 9¢ postage for first rating report; postage on later reports not charged to this account).	Total\$66.50
	Cash deficit 9.50

** Printing cost only; will expect to incur about \$4 for postage to distribute certificates. Further expenses to be expected—about \$3 total for postage and rating fees; this exclusive of previous note.

This report covers the 1971-72 League and not the 1972 Summer League.

Mr. Nelson announced Concord A as the winner of the Independent Category and reported that playoffs were in progress in the USCF Category, with completion expected in September. The 1972 Summer League, of four teams, is currently underway.

The CCCA Championship Administrator, Mr. Poschmann, reported that the second round of the Championship was in progress.

The election of a League Director being announced as the next item of business, it was moved by Mr. Meyers and adopted unanimously THAT ROBERT B. MANNERS BE ELECTED AS LEAGUE DIRECTOR.

Mr. Morrison requested advice from the meeting about matters to be raised at the upcoming USCF Business Meetings, which he will be attending as unopposed candidate for National Secretary. Topics discussed were computerization of the rating system, a faster ratable time control, and regional qualification to the US Championship.

It was moved by Mr. Barnett and adopted 7-1 THAT IT BE THE POLICY OF THE CCCA TO ROTATE ITS MEETINGS AMONG ITS AFFILIATES.

It was moved by Mr. Barnett THAT THE CCC'S NEXT MEETING BE HELD ON FRIDAY, 8 SEPTEMBER, 8:00 AT THE Livermore Chess Club. It was moved by Mr. Trottier and adopted 4-3 to strike out "Livermore Chess Club" and insert RICHMOND CHESS CLUB, OUR LADY OF MERCY CHURCH, 301 W. RICHMOND AVE., PT. RICHMOND. The motion, as amended, was adopted 5-1.

It was moved by Mr. Barnett and lost 3-3 THAT THE CCCA TOURNAMENT SUBCOMMITTEE TRY A TOURNAMENT WITH CASH PRIZES FOR ONLY THE TOP PLACES AND TROPHIES FOR CLASS WINNERS.

It was adopted by general consent that the meeting adjourn. The chairman declared the meeting adjourned sine die at 10:45 p.m.

*

The Tournament Subcommittee of the CCCA's Standing Tournament and Club Relations Committee, in accordance with resolutions adopted at the 1972 Business Meetings of the California State Chess Federation, had unanimously adopted the following amendments to the "Procedure for Determining Central California's Two Qualifiers to the California State Chess Championship: The Calpoint System." (Cf. Chess Voice, February-March 1972, p. 9.)

Section 3: Add "Only Central California residents, as defined by the CSCF, may compete for Central California's two berths. Points earned by Central California residents in Calpoint tournaments outside Central California shall be credited to the Central California Calpoint totals, as reported by the appropriate Sectional Chairman of the CSCF Tournament Committee. Calpoints won in Central California tournaments by non-Central California residents shall be reported to the appropriate Sectional Chairman.

Section 5: Strike out "1 October of the preceding year to 30 September of the current year" and insert "1 March of the preceding year to 28/29 February of the current year."

NEWS NOTES

(Continued from page 7.)

THE SANTA CLARA VALLEY HIGH SCHOOL LEAGUE CHAMPIONSHIP PLAYOFFS FOR 1972 WERE COMPLETED ON 22 MAY. Los Gatos (Coach Bill Barley) was first at 4-0 and will receive the trophy currently held by John Marks, of Camden High School.

A MASTER/EXPERT INVITATIONAL WAS HELD IN OAKLAND ON 20-21 MAY AND 3-4 JUNE. John Grefe was first at 3 $\frac{1}{2}$ - $\frac{1}{2}$. Dennis Waterman and Julio A. Kaplan tied for second at 3-1.

CCCA CHAMPIONSHIP ADMINISTRATOR HANS POSCHMANN REPORTS THAT THE SEMI-FINAL ROUND OF THE 1972 CCCA CHAMPIONSHIP HAS BEEN REACHED. The pairings are as follows: William D. Noble (Concord) vs. Jerry Rogers (Hayward), William O. Allen (Bechtel) vs. Martin L. Sullivan (San Leandro).

THE 1972-73 PAN AMERICAN INTERCOLLEGIATE TEAM CHESS CHAMPIONSHIP WILL BE HELD 26-30 DECEMBER, STOFFER'S UNIVERSITY INN, COLUMBUS, OHIO. The event is sponsored by the Ohio State University Chess Club and the Intercollegiate Chess League of America. For information on the \$1500 prize fund tournament contact Tournament Committee Chairman Michelle West, 3502 Colonial Place, Grove City, OH 43123. For information on the ICIA contact President Harold J. Winston, International House 873, 1414 E. 59th St., Chicago, IL 60637.

CORRECTION. . . Capablanca-Lasker 1921, mentioned in the previous issue, may be ordered from Tru-Test Co., Box 5268, Cleveland, OH 44101.

HOLD THOSE CARDS AND LETTERS

Martin E. Morrison, CCCA Chairman, will be in Atlantic City, New Jersey, from the second to the fifth week of August to attend the US Open as reporter and unopposed candidate for USCF National Secretary. Correspondence and calls to him should be held until his return. In answer to numerous inquiries, Mr. Morrison will continue his residence in the San Francisco Bay Area and will not be moving to New York. The position of National Secretary is an elective office, not connected with the administrative staff at Newburgh, the USCF's headquarters.

Suggestions and comments for the USCF Business Meetings, to be held in Atlantic City, 21-23 August, would be welcomed by Mr. Morrison. Topics to be raised include the computerization of ratings, rating of 45/1 games, and the format of the US Championship. Further details can be secured from Mr. Morrison, who will also be able to serve as proxy for any director not able to attend the meeting.

PROBLEMS COLUMN

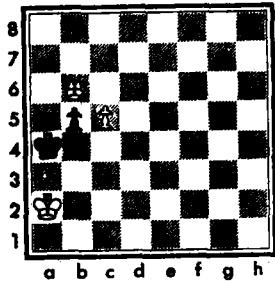
By RICHARD R. SHORMAN, CCCA Publicity Director

Chess Voice Problem-Solving Contest No. 20

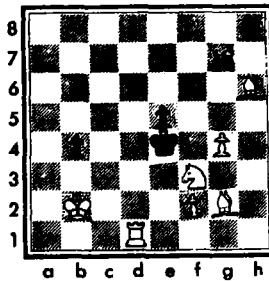
Solutions (the first move only), in algebraic notation, must be received by the Editors (address on page 2) by 15 August. The winner will be the entrant who submits the correct solutions to the most problems. Ties will be broken by lot. The contest is open to all Chess Voice readers.

The prize for Contest No. 20 will be the tournament book of the 1966-67 Hastings International & USA Championship.

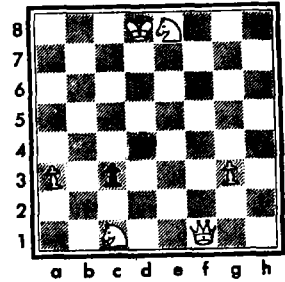
NO. 102
LEAST DIFFICULT
W to play and mate in 3.



NO. 103
MORE DIFFICULT
W to play and mate in 3.



NO. 104
MOST DIFFICULT
W to play and mate in 3.



No. 99: 1 Bh5! Kf5 (d3, d5), 2 Nc3 (e4, Bf3)++. False leads 1 Be5? Kd5 (f5), 2 Nc3 (e4)++, but 1...Kd3! foils the try. Or 1 Qa6?, playing for Kd3 (d5), 2 Nc3 (e4)++, but Black has 1...Kf5! instead.

No. 100: 1 Qc6! The white queen is superfluous, and there is only one square available where shee does not interfere with the remaining pieces. False leads are: 1 Qc3? Ne3!; 1 Qc5 (Qb5)? Ne5!; 1 Qa6? b5!

No. 101: 1 Qa2!, threatening 2 Nc5+ B:c5 3 N:c7++ Kd6 4 Ne8++. Black has three tries: I 1...Nf7 2 N:c7+ B:c7 3 Nc5++ Kd6 4 Nb7++; II 1...Bg6 2 Nd4+ ed 3 Nf4+ Ke5 4 N:g6++; III 1...Qh5 2 Nf4+ ef 3 Nd4+ Ke5 4 Nf3++.

Winner of Contest No. 19

The contest drew thirteen entrants, of whom nine had all three solutions correct: Richard Barge, Steen S. Jensen, Frank Harris, Fred P. Hesse, James V. Jirousek, William Lanam, William D. Noble, Wade Regensberg, and Ronald S. Thacker. By lot Ronald S. Thacker received the prize for the contest, the tournament book of the Tchigorin Memorial Tournament at Soci, 1965, in which World Champion Boris Spassky was the winner.

***** (paid advertisements) *****

IVORY CHESS SETS

Ivory chess sets in Staunton pattern, each chessman a fine art creation, beautifully carved and finished, produced by master craftsmen who have inherited the special ivory art from ancestors.

Direct from India, the home of artistic ivory creations. Write airmail enclosing \$1.00 toward airmail catalogue.

ISHAR SINGH KULWANT SINGH
513, MAJITH MANDI. (W)
AMRITSAR-12.
(INDIA)

CHESS EXPRESS

* The international Chess Magazine
* Complete coverage of Master Chess
* Algebraic
* Published in Switzerland
* German & English Text
* \$7.50 regular mail
* \$10.00 Airmail
* Subscription starts JULY 1972
* Subscribers will receive
* all games of Spassky-Fischer
* Match
* Send 50¢ for sample copy
* Tru-Test Co.
* Box 5268, Cleveland, OH 44101
* PS Send for free book list

GAMES FROM RECENT EVENTS

Chess Voice readers may submit to the Editors (address on page 2) their best games, in algebraic notation, for publication.

ALGEBRAIC NOTATION								
8	a8	b8	c8	d8	e8	f8	g8	h8
7		f7		d7		f7		h7
6	a6		e6		a6		g6	
5		b5		d5		f5		h5
4	a4		e4		a4		g4	
3		b3		d3		f3		h3
2	a2		e2		a2		g2	
1		b1		d1		f1		h1
	a	b	c	d	e	f	g	h

In algebraic, piece moves are recorded by indicating the piece involved, then the square to which it is moved. For pawn moves the "P" for pawn is eliminated.
 Descriptive: 1 P-K4 P-K4
 2 N-KB3 N-QB3 3 B-N5
 P-QR3
 Algebraic: 1 e4 e5 2 Nf3
 Nc6 3 Bb5 a6

No. 106. Barry G. Nelson (1859)—Roger Gabrielson (2055), Berkeley. CCCA's Marin Chess Club Tenth Anniversary Tournament, Mill Valley, 14 April. English Opening.
 1 c4 Nf6 2 Nc3 g6 3 g3 Bg7 4 Bg2 0-0 5 Nf3 c5
 6 0-0 Nc6 7 d3 a6 8 a3 Rb8 9 Rb1 b5 10 cb ab
 11 b4 cb 12 ab Ng4 13 Bf4 B:c3 14 B:b8 N:b8
 15 d4 Nc6 16 h3 Nf6 17 Qd3 B:b4 18 d5 N:d5 19
 Q:d5 Qb6 20 Ne5 N:e5 21 R:b4 Qf6 22 R:b5 d6
 23 Ra5 Be6 24 Qb7 Bc4 25 f4 resigns

Francisco International Hilton, 6 May 1972. Two Knight's Defense.
 1 e4 e5 2 Nf3 Nc6 3 Bc4 Nf6 4 Ng5 Bc5 5 B:f7+ Qd4+ 14 Ke2 Qc4+ 15 d3 Qg4+ 16 Kd2 Qf4+ 17 Ke2
 Kf8 6 Bd5 N:d5 7 ed Q:g5 8 Qf3 Ke7 9 dc Rf8 Qg4+ 18 Kd2 Bd4 19 Qe4 Rf4 20 h3 Rf7+ 21 Ke1 Qg3
 10 cb B:b7 11 Q:b7 B:f2+ 12 Ke2 Qg4+ 13 Kd3 22 Kd1 Rf8 23 Qg4 Rf1+ 24 Kd2 Qel++ 25 resigns

No. 108. J. Dugas—Jude F. Acers (2402), San Francisco. Simultaneous Exhibition, Surrey, British Columbia, Canada, 3 June 1972. Sicilian Defense.
 1 e4 c5 2 Nf3 Nc6 3 d4 cd 4 N:d4 Nf6 5 Nc3 e5 B:f6 Qs:f6! 11 N:d6+ B:d6 12 Q:d6 Nd4 13 0-0-0
 6 Ndb5 d6 7 Bg5 a6 8 Na3 Be6 9 Nc4 Rc8! 10 Qh6+ 14 Rd2 Rd8 15 Qc5 Q:d2+ 16 resigns

No. 109. Charles H. Ensey (1421), Oakland—Elwin C. Meyers (1727), Oakland. CCCA's Concord Regional, 11 June 1972. Benoni Counter-gambit.
 1 d4 Nf6 2 c4 c5 3 Nf3 g6 4 Nc3 Bg7 5 e4 0-0 6 Ne4! ef+ 22 K:f2 Qh4+ 23 ge fg+ 24 hg Qd8 (g) 25
 e5 Ne8 7 d5 d6 8 ed N:d6 9 Bd3 a6 10 Bf4 e5?! Bd5+ Be6 26 B:e6+ R:e6 27 Qd5 (h) Qf8+ 28 Kg2
 (a) 11 Be3 (b) Re8 12 Ne4 N:e4 13 B:e4 f5 14 Qf5 29 Q:f5 gf 30 N:c5 R:d6 31 Rad1 R:d1 32 R:d1
 Bc2 f4 (c) 15 B:c5 Qa5+ 16 b4 Qd8 (d) 17 Be4! Bf6 33 Nd7 resigns
 b6 18 d6 bc 19 B:a8? (e) e4 20 Nd2 e3 (f) 21

Notes by CHARLES H. ENSEY

- (a) If 10...e6 11 Be5.
- (b) Not 11 B:e5? Re8 or 11 de B:e6 12 Qb3 b5!
- (c) If 14...e4 15 Ng1! B:b2 16 Rb1 Bg7 17 B:c5.
- (d) Threatening b6 and e4.
- (e) Better is 19 Qd5+ Be3 20 Q:a8 or 19 bc Qa5+ 20 Nd2.
- (f) Better is 20...B:a1 21 N:e4! Bd4 22 0-0 Be6 23 bc.
- (g) Black wanted to check with his QB, but now this is impossible.
- (h) Threatening Ng5. Now a forced series of exchanges wins for White.

No. 110. Larry Gilden (2313), Berkeley—David H. Krause (2050), Mill Valley. Simultaneous Exhibition, San Francisco, 17 June 1972. Dutch Defense.
 1 Nf3 f5 2 g3 Nf6 3 Bg2 g6 4 0-0 Bg7 5 c4 0-0 Nb5 20 Ne6 B:e6 21 de Qe7 22 Bc5 Nd6 23 ef gf 24
 6 Nc3 d6 7 d4 Nc6 8 d5 Ne5 9 N:e5 de 10 e4 e6 B:d6 cd 25 Bh3 f4 26 Bf5 fg 27 hg Qg5 28 g4 Qh4
 11 Qb3 ed 12 cd Kh8 13 Be3 Qe7 14 Racl a6 15 29 Kg2 Qg5 30 Rhl Qd2+ 31 Kh3 Qh6+ 32 Kg3 Qf4+
 Qc4 Rd8 16 f3 Ne8 17 Na4 Qf7 18 Nc5 Nd6 19 Qb3 drawn

No. 111. Robert R. McIntyre (1751), Stockton—Garnet Purnao (1816*), Stockton. Premier Tournament, Stockton, 14 June 1972. Queen's Pawn Opening.
 1 d4 d5 2 Nf3 Bf5 3 c4 c6 4 Qb3 dc 5 Q:b7 Nd7 Nc6 Qe4 31 h3 B:d4+ 32 N:d4 Q:d4+ 33 Khl Nf2+ 34
 6 Q:c6 Rc8 7 Qa4 Qb6 8 Nc3 Ngf6 9 e3 g6 10 Kh2 Qe4-35 Qo3+ Kh7 36 Qf6 Qe6 37 Q:e6 fe 38 Be3
 B:c4 Bg7 11 Ne5 0-0 12 N:d7 B:d7 13 Qb3 Qa5 14 Nd3 39 B:a7 N:b2 40 g4 Nc4 41 Kg3 Kg7 42 Bd4+
 Bd2 Qf5 15 0-0 Qg5 16 Nd5 Ne4 17 Bc3 Kh8 18 f4 Kh7 43 h4 Kg8 44 h5 g5 45 fg hg (Time scramble
 Qh5 19 N:e7 Rb8 20 Qc2 Nf6 21 Be2 Bg4 22 Rf2 last eight moves.—RRM) 46 Bf6 e5 47 B:g5 e4 48
 Rfe8 23 Nc6 R:e3 24 N:b8 B:e2 25 Bd2 Re8 26 Kf2 Kh7 49 a4 Ne5 50 Ke3 N:g4+ 51 K:e4 Nf2+ 52
 R:e2 R:e2 27 Rel h6 28 R:e2 Q:e2 29 Qcl Ng4 30 Kd4 Nh3 53 Be3 Ng1 54 B:gl Kh6 55 a5 K:h5 56 a6
 Kg6 57 a7 Kf6 58 a8/Q resigns

CCCA'S 1971-72 LEAGUE
By WESLEY A. NELSON, CCCA League Director

USCF CATEGORY

Div.	Team	R1	R2	R3	R4	R5	R6	S	R
No.	1 Orinda	<u>W3</u>	<u>W4</u>	<u>D2</u>	<u>D3</u>	<u>D4</u>	<u>D2</u>	4	2
	2 Concord A	<u>W4</u>	<u>D3</u>	<u>D1</u>	<u>W4</u>	<u>W3</u>	<u>D1</u>	<u>4</u> $\frac{1}{2}$	1
	3 Berkeley C	<u>L1</u>	<u>D2</u>	<u>W4</u>	<u>D1</u>	<u>L2</u>	<u>D4</u>	<u>2</u> $\frac{1}{2}$	3
	4 Berkeley D	<u>L2</u>	<u>L1</u>	<u>L3</u>	<u>L2</u>	<u>D1</u>	<u>D3</u>	1	4
Gen.	1 Concord B	<u>L3</u>	<u>L2</u>	<u>L4</u>	<u>L3</u>	<u>D2</u>	<u>L4</u>	<u>1</u> $\frac{1}{2}$	4
	2 Livermore B	<u>W4</u>	<u>W1</u>	<u>L3</u>	<u>L4</u>	<u>K1</u>	<u>L3</u>	<u>2</u> $\frac{1}{2}$	2
	3 Berkeley A	<u>W1</u>	<u>W4</u>	<u>W2</u>	<u>W1</u>	<u>L4</u>	<u>W2</u>	5	1
	4 Berkeley B	<u>L2</u>	<u>L3</u>	<u>W1</u>	<u>W2</u>	<u>L3</u>	<u>L1</u>	2	3
So.	1 San Jose St	<u>W2</u>	<u>W4</u>	<u>W3</u>	<u>W2</u>	<u>L4</u>	<u>D3</u>	<u>4</u> $\frac{1}{2}$	2
	2 U of SC	<u>L1</u>	<u>L3</u>	<u>D4</u>	<u>L1</u>	<u>L3</u>	<u>L4</u>	<u>1</u> $\frac{1}{2}$	4
	3 San Jose	<u>W4</u>	<u>W2</u>	<u>L1</u>	<u>W4</u>	<u>W2</u>	<u>D1</u>	<u>4</u> $\frac{1}{2}$	1
	4 Livermore A	<u>L3</u>	<u>L1</u>	<u>D2</u>	<u>L3</u>	<u>W1</u>	<u>W2</u>	<u>2</u> $\frac{1}{2}$	3
Late	1 San Jose St	<u>W3</u>	<u>W5</u>	<u>W4</u>				3	1
	2 San Lean A	<u>D5</u>	<u>W4</u>	<u>W3</u>				<u>2</u> $\frac{1}{2}$	2
	3 San Lean B	<u>L1</u>	<u>L6</u>	<u>L2</u>				0	5
	4 Chabot Col	<u>L6</u>	<u>L2</u>	<u>L1</u>				0	6
	5 Marin A	<u>D2</u>	<u>L1</u>	<u>L6</u>				<u>1</u> $\frac{1}{2}$	4
	6 Marin B	<u>L4</u>	<u>W3</u>	<u>L5</u>				1	3

INDEPENDENT CATEGORY

Div.	Team	R1	R2	R3	R4	R5	R6	R7	R8	S	R
No.	1 Berkeley*	<u>D5</u>	<u>L3</u>	-	-	-	-	-	-	-	5
	2 Concord A	<u>W4</u>	<u>W5</u>	-	<u>W4</u>	<u>W3</u>	-	-	<u>W5</u>	5	1
	3 Concord B	-	<u>W1</u>	<u>L5</u>	-	<u>L2</u>	<u>W4</u>	<u>L4</u>	-	2	3
	4 Martinez	<u>L2</u>	-	-	<u>L2</u>	<u>D5</u>	<u>L3</u>	<u>L3</u>	-	<u>1</u> $\frac{1}{2}$	4
	5 Richmond	<u>D1</u>	<u>L2</u>	<u>W3</u>	-	<u>D4</u>	-	-	<u>L2</u>	2	2
So.	1 San Jose St	<u>W3</u>	<u>L4</u>	<u>L2</u>	<u>L3</u>	<u>L4</u>	<u>D2</u>			<u>1</u> $\frac{1}{2}$	4
	2 Fremont	<u>W4</u>	<u>W3</u>	<u>W1</u>	<u>W4</u>	<u>L3</u>	<u>D1</u>			<u>4</u> $\frac{1}{2}$	1
	3 Livermore	<u>L1</u>	<u>L2</u>	<u>L4</u>	<u>W1</u>	<u>W2</u>	<u>L4</u>			2	3
	4 Walnut Crk	<u>L2</u>	<u>W1</u>	<u>W3</u>	<u>L2</u>	<u>W1</u>	<u>W3</u>				

* Berkeley withdraws before round 3.

Underlined result = forfeit match.

Final standings. Several matches are recorded as double forfeits.

*
1971-72 League Report

Independent Category. Concord A and Fremont won the championships of their respective geographical sections. In a first playoff match, Ken Miller's Concord team beat the Fremont

squad—but two of the Concord players were ineligible. Normally, this match would have been forfeit to Fremont, but there were extenuating circumstances, and the League Director asked the Fremont team whether the match could be replayed. The second playoff match was also won by Concord A, and that team has earned the Independent Championship for the season. Hans Poschmann and the Fremont team have won the special Good Sportsman of the Year Award.

Honors for the past season go to: North Section Board #1 Ken Miller, Concord A, #2 F. Jack Ulrich, Concord A, (honorable mention) Leonard F. Trottier, #3 R. Kilmer, Richmond, #4 Richard Kelson, Concord A; South Section #1 Hans Poschmann, Fremont, Dean Hall, Walnut Creek, #2 David Zensius, San Jose State, David Jacobsen, Walnut Creek, #3 Ventura Negrete, Fremont, #4 Jon B. Fox, Fremont.

USCF Category. Playoffs are still underway among the USCF Divisional Champions. A close reading of the USCF crosstable shows that eight matches have gone into history as double forfeits—the League Director did not receive match reports for those contests.

Individual awards will go to the following players: Best Master/Expert Steven D. Cross, Berkeley, Eleuterio A. Alsasua, San Jose, Roy Hoppe, Marin A; Best Class A Dinis G. M.-Santos, Berkeley C, George Roust, Livermore B, John L. Peterson, San Jose, Steven N. Morford, San Jose State, Harry Radke, San Jose State; Best Class B Duncan D. Campbell, Orinda, Friedrich-W. Scholz, Berkeley A (5 for 5), Harold L. Barnett, Livermore, Vincent Hikida, San Jose State; Best Classes C/D/E Stanley Kilker, Orinda, Juergen E. Kasprk, Berkeley C, Michael E. Koblentz, Berkeley B, Ernest Rosenthal, San Jose, Grover Prowell, San Jose State; Best Unrated John Wadsworth, Orinda, Elizabeth C. Shaughnessy, Berkeley A (3 for 3), Richard McSwiggin, Livermore, Allen Wallace, San Leandro A (3 for 3).

A few words as to how the honors were awarded. In each geographical section honors are available as described above (by board number in Independent Category, by playing strength in USCF Category). In Independent Category the best board 2 award, for example, goes to the player scoring the most points while playing on board 2. Some advantage is enjoyed by players who stick to one board. In the USCF Category a player's class is defined by the highest USCF rating in effect during his activity. Although there were 4 geographical sections of USCF play, only 3 Master/Expert awards are listed, because no players of that class won points in the Northern Section.

CCCA'S 1972-73 LEAGUE
By ROBERT B. MANNERS, CCCA League Director

Most probably the new league will operate under rules substantially like the present set and with similar structure (geographical sections, etc.) It is hoped that play can begin perhaps in October. This would allow more flexibility in scheduling and more time for playoffs and cleaning up loose ends. It is very important that entries be sent promptly to the League Director. For further information contact Robert B. Manners, 1155 E. 14th St., Suite 18, San Leandro 94577, 482-6088.

***UNDERSTANDING CHESS LAWS AND TOURNAMENT DIRECTION:

С ТОЧКИ ЗРЕНИЯ СУДЕЙ

THE RUSSIAN TOURNAMENT DIRECTOR'S VIEWPOINT, PART II***

By MARTIN E. MORRISON, Member, USCF Tournament Director Certification Committee

Questions and comments from readers on chess laws and tournament direction are welcomed. Contact the columnist at P. O. Box 1622, Oakland, CA 94604; (415) 582-1973.

*

My last column consisted of excerpts from an article which appeared in Shakhmaty v SSSR (Chess in the USSR), reporting the views of several prominent Russian tournament directors on rules, competitions, time controls, and playing conditions. The following are my comments on several of the points raised.

*

MY COMMENTS. 1. Readers will no doubt have noted that the Russian tournament directors regard the Swiss System as something of a novelty. Theoreticians readily acknowledge that the round robin (all-play-all) is the more perfect form of competition and tolerate the Swiss only for its practical advantages in handling large numbers of players. However, two factors have made the Swiss System as practiced in the US of greater validity than that as practiced in other countries. First, the code of rules devised by Kenneth Harkness and published in his Official Blue Book and Encyclopedia of Chess (1956) and his Official Chess Handbook (1967) has standardized the best methods of handling all details of the system, such as transfers, color allocation, and transpositions. The FIDE (World Chess Federation) at its 1971 Congress formed a Sub-Commission to draw up regulations for the uniform application of the Swiss System. Members are Kenneth Harkness (USA), George H. Simmons (UK), and Phil G. Haley (Canada). Second, the rating system developed by Prof. Dr. Arpad E. Elo, now adopted by FIDE, makes for greater precision in the pairing of the first rounds and subsequently within large score groups. The Soviet Chess Federation utilized for rating purposes a non-numerical system which is far less sophisticated.

2. Mr. Vasilev's opinion that only one round per day should be permitted is a far-distant goal for most weekend tournaments, which call for three rounds per day. My own experimentation with weekend Swisses of four rounds, two per day, has been quite successful and well received by the players. In such a tournament, however, players should be distributed into class sections of no more than 30 players, so that ties for first place can be avoided as much as possible. According to Swiss theory, in order to determine a first-place winner, no more than 32 players should be entered in a five-round Swiss, and no more than 16, in a four round Swiss. Mr. Yefremkov's schedule is far more rigorous even than this. To explain the prevalence of ties in weekend Swisses, one need only consider how many tournaments violate this basic principle.

3. Such slower time controls as 40/2, suggested by most of the Russian directors, would be welcomed by the players, but would be feasible in most weekend Swisses only with the use of the secondary control proposed here, an end-stop control in which each player has a specified amount of time to complete his game after the initial control. Four of the five directors suggest such a secondary control. An additional advantage (besides permitting slower initial controls) is that the end of one round and the beginning of the next could be fixed for a certainty, as every game would have to be over by a predictable time. Players could count on rounds starting and ending at a pre-scheduled time and would be able to compete for a final result over the board without fear of having a questionable adjudication made.

Prof. Elo, Chairman of the USCF Rating Committee, has solidly backed such an option when necessary. (Some tournaments could, of course, permit unlimited continuation.) He writes: "My own feeling is that the end-stop time control is going to be an important innovation for tournament play and may be a stimulant for the game. When I saw Dr. Euwe /Former World Champion, now President of FIDE/ in Vienna last December I asked him whether international masters and grandmasters would be willing to play in an international tournament under such conditions. One reason for the lack of popular appeal of chess as a spectator sport is the extremely slow time control. And I suggested to Dr. Euwe a time control of 40 moves in two hours (instead of the present 2½ hours), no adjournment, and one hour each for the remainder of the game. He was distinctly in favor of such a time control and thought there would be no problem in attracting masters to an event with such conditions. After all, what interests them is the prize fund.

"An interesting point was also made by one of the Yugoslav players, namely, that when a spectator goes to any other sport event, he is guaranteed that he will see the event to the finish and not have to return the following day for the continuation. So why not chess? The point may be made that the artistic quality of the games may suffer under such a fast time control. This is just nonsense, as anything which could possibly revitalize the competitive spirit in grandmaster chess and reduce the deadly grandmaster draws on the crosstables could only improve artistic quality. Come to think of it, perhaps 50 moves in two hours with 30 or 45 minutes for the remainder of the game might be even better. It would certainly guarantee that a man is on his own all through the game and cannot rely on an analytical team during adjournment."

With such important authorities behind such a secondary control, there is certainly room for work here.

EPIDEMIC REPORTED SWEEPING CHESS PLAYERS
By BOB CHADWICK, Florida

The following article seemed so timely that we could not resist reprinting it to do our part in stemming the tide of the epidemic. Our thanks to Kenneth R. Smith, Editor of Chess Digest Magazine, in the June 1972 issue of which this article appeared.

Of all the lunacies earth can boast
The one that must please the devil most
Is pride reduced to the whimsical terms
Of causing the slugs to disperse the worms.

—Robert Brough, The Tent-Maker's Song

Have you ever encountered chessnobitis? It's a relatively rare [??-EDS] disease which primarily affects the adolescent chess mind. However, it can be contagious and susceptible. Individuals should use extreme caution in approaching a known case of acute chessnobitis. The chess player suffering from this malady may be easily recognized. If challenged to a game, he will immediately reply with a symptomatic "What's your rating?" or "No thanks, I'm waiting to play Mr. Expert!" Such an individual may often exhibit extreme indecisiveness. The choice of whether to hover over the Class C games with a patronizing smirk or whether to gape in adulation at the gods on the Class A boards can leave him in a state of frenzy. Even those immune to this disease find such an encounter extremely irritating. Contact with persons suffering from chessnobitis occasionally produces a rise in the blood pressure of some individuals. In such cases, prophylactic measures include removing oneself from the contaminated area, long walks in the night air, cold showers, and simply counting to ten or remaining quite still until the blood pressure returns to normal. The disease makes no class distinctions and can affect Class D as easily as Class A players.

Fortunately, the disease is not widespread [again, ??-EDS] and was practically unknown . . . until recent times. Currently, however, several isolated cases have been reported, and the chess public is urged to be on their guard. In one instance, a local player withdrew from a tournament list because, in his words, "I don't enjoy playing lower rated players." (Neither his rating nor his performance placed him appreciably above the opponents he so scorned.) Another afflicted person is said to avoid playing with fellow members on his high school chess team because they might contaminate the high quality of his play.

If the brain cells of such individuals are not permanently impaired, they will do well to reflect on the state in which the chess world would be if all strong players had such an attitude. Ponder, if you will, how long it would take a young player to learn anything beyond the rudiments of the game without the unselfish and untiring efforts of people like . . . [We'll let you try to fill in the names.—EDS] The obsession to play only higher-rated players is not particularly ennobling and can be quite offensive. Certainly the attainment of master strength by the ambitious student requires at the very least a knowledge of how to win a "won game." This know-how can best be acquired from experience over the board against any and all competition. In conclusion, chessnobitis will improve neither your chess nor your social life. To paraphrase an old adage:

Chessnobitis has the power to make man unhappy.

Classified Ads

Five cents per word per issue on any subject

CALIFORNIA CHESS TOURNAMENT BULLETIN. Selection of interesting games from recent tournaments throughout California. See how your tournament opponents play the openings, the endings. Over 300 games per issue. See page 16, column 2, for subscription details.

CCCA AFFILIATE DIRECTORY

(Current number of CCCA affiliates: 33; members: 583.)

For information on affiliation to the CCCA, for which there is no charge, and the benefits of affiliation, contact the CCCA (address and telephone number on page 2). THE FOLLOWING ARE NOT MAILING ADDRESSES.

*

- BECHTEL CC: W 7:30 p.m.; 11th Fl. Conf. Rm., 50 Beale St., San Francisco.
 BELLARMINE CC: M-TH 11:45 a.m.-12:45 p.m.; Bellarmine Col. Preparatory, Univ. & Elm St., San Jose.
 BERKELEY CC, INC. UC DIV.: F 7-11 p.m.; Palm Rm., Berkeley Cen. YMCA, 2001 Allston Wy.
 CAL. STATE UNIV., SAN JOSE, CC: F 12 m.-4:30 p.m.; Almaden Rm., Col. Union, 211 So. Ninth St.
 CASA ALVARADO CNESS GEN., INC. MONTEREY PEN. CC: TU-F 4:30-10 p.m., SA-SU 2-10 p.m.; 467 Alvarado St., Monterey (the Monterey Pen. CC meets at the Center TH 7-12 p.m.).
 CHESS FRIENDS OF NO. CAL. (honorary affiliate).
 COL. OF THE SEQUOIAS CC: TU 11:30 a.m.-1 p.m.; Student Union, Mooney Blvd., Visalia.
 CONCORD CC: F 7:30-11 p.m.; Concord Sen. Citizens Cen., 2974 Salvio St.
 FREMONT CC: TH 7-11 p.m.; Cen. Pk. Comm. Cen., 40204 Paseo Padre Pkwy.
 HAYWARD CC: M & F, 8-12 p.m.; HARD Bldg., Palma Ceia Pk., Miami Ave. & Decatur Wy.
 LIVERMORE CC: 1st & 3rd F 7:30-11 p.m.; Basement, Carnage Bldg., 4th & "J" Sts.
 MARIN CC: TH-F nights; United Meth. Ch. of Tamalpais Valley, Ash & Marin Ave., Mill Valley.
 MARTINEZ CC: M 7:30 p.m.; Sen. Citizens Cen., 1111 Ferry St.
 MERRITT CC & CHESS TEAM: M-F 11 a.m.-12 m.; Rm. R-137 (MWF), Rm. A-214 (TUTH), Merritt Col., 12500 Campus Dr., Oakland.
 ORINDA CC: TH 7:30 p.m.; St. Stephen's Epis. Ch., St. Stephen's Dr. & Via Las Cruces.
 PLEASANT HILL CC: F 7:30 p.m.-2 a.m.; Field House, 233 Gregory Ln.
 REDWOOD CITY CC: M 7:30-11 p.m.; Redwood City Rec. Activity Bldg., 1400 Roosevelt Ave.
 RICHMOND CC: F 7 p.m.; Our Lady of Mercy Ch., 301 W. Richmond Ave., Pt. Richmond.
 SALINAS CC: F 7:30 p.m.; The Steinbeck Lib., 110 W. St. Louis.
 SAN JOSE CC: W 7:30 p.m.; San Jose Cen. YMCA, 1717 The Alameda.
 SAN LEANDRO CC: M 7:30-11:30 p.m.; Gymnasium, Washington Sch., 250 Dutton Ave.
 SAN QUENTIN CC: Calif. State Prison.
 SANGER CC: Caffe Midi, 5048 No. Maroa Ave., Fresno.
 SANTA ROSA CC: F 7-10 p.m.; Barrett Hall, Santa Rosa Jr. Col., 1501 Mendocino Ave.
 STOCKTON CC: W 7-11 p.m.; Multi-purpose Rm., Hoover Sch., 2900 Kirk St.
 UC DAVIS CC: M 7-11 p.m.; Games Rm., Memorial Union.
 UKIAH CC: TH 8 p.m.; 1st Presbyterian Ch., W. Perkins & So. Dora.
 VALLEJO CC: F 7:30 p.m.; Vallejo Comm. Cen. Bldg., 225 Amador St.
 VISALIA CC: F 7:30 p.m.; Rec. Pk. Bldg., 345 No. Jacob St.
 WALNUT CREEK CC: TU 7:30 p.m.; Sen. Citizens Hospitality House, 1385 Civic Dr.
 WEST HILLS COMM. CC: 1st & 3rd W 7-9:30 p.m.; Student Cen., West Hills Col., 300 Cherry Ln., Coalinga.

CALPOINTS FOR CENTRAL CALIFORNIA: INTERIM TOTALS

All Calpoints accumulated through 15 July have been totaled in this system to determine Central California's two qualifiers to the California State Chess Championship. For upcoming tournaments awarding Calpoints, see page 3.

*

Top Ten

1 EDWARD ROSENTHAL	45	4 Donald F. Dean	16	7 Donald F. Gordon	10
2 CRAIG N. BARNES	38	5 Lawrence R. Hughes	15	8 Thomas F. Maser	10
3 Philip D. Smith	36	6 James E. Tarjan	15	9 John L. Peterson	10

LIST OF DEFAULTERS BARRED FROM TOURNAMENT PLAY

Proposed USCF Tournament Rule 35, which the CCCA announces and enforces at its tournaments, reads: "In a Swiss System tournament, any player who fails to notify the director in advance that he will be unable to play in any round and then loses the game under Article 17.2 of the Laws shall be fined the sum of \$5.00 (five dollars), payable to the sponsoring organization. The player will not be permitted to continue play in the tournament and may be barred by the sponsoring organization from playing in any of its tournaments until the fine is paid." The following players have been notified of an infraction of this rule and have neither presented a reasonable excuse nor paid the fine. They are barred from participation in future tournaments until the matter is settled.

HIAWATHA BRADLEY	RICHARD S. HULL	CHRIS JONES	HARRY MAYER
STUART A. WARREN	HAROLD WHITLOCK		

EVANS ON CHESS

Only A Draw

Among amateurs there seems to be a deep-rooted prejudice against a draw, a readiness to risk almost certain loss rather than willingly accept so dull a conclusion. Complainers are frequently heard about the unenterprising, negotiated draws in modern master competition.

It is true that many tournament games show an excess of mutual respect. But if no blunders are made on either side, a draw is the logical result; and

first prize by accepting. Schottlander eventually lost the game. In a similar last-round situation at Carlsbad 1907 the great Rubinstein refused a draw against Wolf, missed a win, then drew anyway. As he left the table, Rubinstein was stormed with questions from all sides. "Didn't you see the win? It was so easy!" Rubinstein smiled. "Yes, of course I saw the win. But I only needed a draw!" "Only a draw?" "I gasped the spectators.

besides, a draw certainly need not be dull. At Portoroz 1958 Averbach and Fischer agreed to a draw in a wild position after 21 moves, in the middle of things. When asked Fischer why, he explained: "I was afraid of losing to a Russian grandmaster and he was afraid of losing to a kid."

In the Leipzig tournament of 1888, Schottlander refused Mieses' offer of a draw, even though he would have clinched

"Then why did you refuse his offer of a draw in the first place?" Rubinstein laughed. "Because with Wolf I make a draw when I want to - not when he wants to!"

Chess literature abounds in draws far more exciting than many a decisive result.

#####

UNITED STATES CHESS FEDERATION (USCF) MEMBERSHIPS (AT 20% DISCOUNT): \$4 (under 21), \$8 (21 and over) per annum, new or renewal. Benefits include a monthly Chess Life & Review subscription, eligibility for a USCF (national) chess rating, and discounts on chess books and equipment.

CALIFORNIA STATE CHESS FEDERATION (CSCF) MEMBERSHIPS: \$2.50 (under 21), \$5 (21 and over) per annum. Benefits include a bimonthly California Chess Reporter subscription, use of a CSCF Rating Card (to keep track of the member's approximate updated USCF rating), and eligibility for California State Chess Championship.

USCF AND CSCF MEMBERSHIPS ARE STRONGLY RECOMMENDED.

NEXT CCCA MEETING: Friday, 8 September, 8:00 p.m., Richmond Chess Club, Our Lady of Mercy Church, 301 West Richmond Avenue, Point Richmond. Every member of the CCCA, i.e., every person who is certified by the appropriate officer of a chess club or organization affiliated to the CCCA (listed on page 15) to be a member or officer of the affiliate, has full privileges of debate and voting. Non-members are welcome.

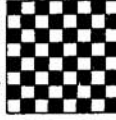
POSTMASTER: SEND PS FORM 3579 TO
Martin E. Morrison
 Central California Chess Association
 Post Office Box 1622
 Oakland, California 94604, USA
 Telephone: (415) 582-1973

CCCA SALES

Order from the CCCA (address and telephone number on page 2). All items available by immediate pickup or by mail.
CLOCKS: BHB Plastic, light brown plastic case, 6" x 3" x 1½", 60-day guarantee, the most used tournament clock. \$15 (\$16 if mailed).



SETS: Classic Staunton, tournament size 3 3/4" king, solid black and white plastic, felted bottoms, practically indestructible, in cotton bag. \$5.50 (\$6.50 if mailed).



ROLL-UP BOARD: Durable, extra heavy quality, good-looking vinyl on cloth backing, can be rolled up when not in use, brown and cream, 2¼" squares, 17" x 21¼". \$4 (\$4.25 if mailed).



CALIFORNIA CHESS TOURNAMENT BULLETIN: Over 300 games per issue from California tournaments, index of players, bimonthly. \$4 per annum.

CHESS: Illustrated British-American chess magazine, monthly. \$7.50 per annum.

CHESS PLAYER: World's largest chess magazine, complete and fast coverage of big international tournaments, over 2500 annotated games, monthly. \$15 per annum.

NEXT AFFILIATE ASSESSMENTS DUE: 1 August with a grace period of two weeks allowed for payment. Appropriate officers of each affiliate should send 20¢ per club member, along with a list of the names and addresses of the affiliate's members, to the CCCA Treasurer, Leonard F. Trotter, 5315 MacDonald Avenue, El Cerrito 94530, 233-1595. Fines up to \$2 will be levied for delinquent payment without a valid excuse.