

THE CENTRAL CALIFORNIA CHESS VOICE



CENTRAL CALIFORNIA'S CHESS MAGAZINE
and
OFFICIAL ORGAN
of the
CENTRAL CALIFORNIA CHESS ASSOCIATION
(An Authorized Affiliate
of the United States Chess Federation)

MARTIN E. MORRISON
Member, International Association of Chess Reporters (AIPE)
President, Association of US Chess Reporters
. ELWIN C. MEYERS
Member, Association of US Chess Reporters

October-November 1972
Whole No. 29



(Left Photograph) THE CREAM OF THE PACIFIC OPEN IN SESSION. Co-winner and US Master John Grefe ponders a move in his game with Charles A. Maddigan (front). Co-winner Ziad Baroudi concentrates on his play against Ernest Rosenthal (center). Peter G. Gray evaluates his position against third place winner, US Master Roy C. Ervin.

(Right Photograph) PLAYERS TAKE A BREAK AFTER THE ROUND TO LOOK OVER A WINNING PLAY. Jennie C. Kiesling (left) proposes her line while Roy C. Ervin (center) and Tim P. Eggers (right) evaluate.

Martin E. Morrison
Central California Chess Association
Post Office Box 1622
Oakland, California 94604, USA
Telephone: (415) 582-1973

Send change of address notices, undeliverable copies, orders for subscriptions, and other mail items to the address above. Postmaster: Send PS Form 3579 to the address above.

Chess Voice is published bimonthly by the Editors of the CCCA. EVERY MEMBER OF THE CCCA, I. E., EVERY PERSON WHO IS CERTIFIED BY THE APPROPRIATE OFFICER OF A CHESS CLUB OR ORGANIZATION AFFILIATED TO THE CCCA (listed on page 15) TO BE A MEMBER OR OFFICER OF THE AFFILIATE, receives mailed to his home a Chess Voice subscription, paid for in connexion with the payment of the affiliate's CCCA assessments in a distinct, voluntary, and independent act on the part of each individual member, the relation of subscriber being clearly understood and fully agreed to. Known office of publication: Campus Bancroft Building, Room 206, 2440 Bancroft Way, Berkeley, California 94704 (not a mailing address). Second-class postage paid at Berkeley, California.

The opinions expressed in Chess Voice are those of the Editors or of the respective contributors. They do not necessarily constitute an official policy of the CCCA or any of its affiliates.

NONMEMBER SUBSCRIPTIONS: \$2.00 per annum.

ADVERTISEMENTS: 5¢ per word per issue on any subject (classified advertisements), \$5.00 per eighth page per issue, \$20.00 per insert per issue (this cost is more than \$60.00 cheaper for mailing tournament circulars, etc., than postage costs alone).

CENTRAL CALIFORNIA OFFICIALS

ALL COMMUNICATIONS SHOULD BE REFERRED TO MARTIN E. MORRISON (ADDRESS AND TELEPHONE NUMBER ABOVE).

Central California Chess Association (CCCA)

Officers (Members of the Executive Board): Martin E. Morrison, Chairman and Editor; Saleh Mujahed, Secretary; Leonard F. Trottier, Treasurer; Robert B. Manners, League Director; Elwin C. Meyers, Editor; Richard R. Shorman, Publicity Director.

Standing Committees: Clock: Leonard F. Trottier, Chairman; Martin E. Morrison. Tournament Committee: Martin E. Morrison, Chairman; Elwin C. Meyers.

CCCA Championship Administrator: Hans Poschmann. Intercollegiate Chess League of America Liaison: Martin E. Morrison (ICLA Regional Vice President-Far West, Central, Area). The CCCA serves in the position of intercollegiate chess league for the Far West, Central, Area of the ICLA. Postal Chess Director: Edward J. Delgado.

California State Chess Federation (CSCF)

Officers: Robert E. Burger, Vice President; Spencer H. Van Gelder, Secretary; Dr. Ralph R. Hultgren, Treasurer.

Directors: Central California: Elwin C. Meyers, Martin E. Morrison, Saleh Mujahed, William A. Myers, Jr., Gunnar H. Rasmussen, Chairman. Northern California: Alan Benson, W. Guthrie McClain, Raymond J. Conway, Henry Gross, Theodore Yudakufski.

Committees: Tournament, Central Section: Martin E. Morrison, Chairman, Elwin C. Meyers, William A. Myers, Jr.; Northern Section: W. Guthrie McClain, Chairman. Tournament Calendar: Martin E. Morrison. Chairman.

United States Chess Federation (USCF)

Officer-Directors: George Koltanowski, National Vice President; Martin E. Morrison, National Secretary (Members, Policy Board).

Directors: William T. Adams, William A. Bills, Robert E. Burger, Peter Dahl, Anthony J. DiMilo, Paul T. Hubbard, Chris A. Fotias, Russell A. Freeman, Dennis G. Fritzingler, Dr. Benjamin L. Gross, Henry Gross, Eugene S. Lien, W. Guthrie McClain, Robert R. McIntyre, Elwin C. Meyers, John R. Moore, Jr., Saleh Mujahed, William A. Myers, Jr., George E. Oakes, Hans Poschmann, Gilbert Ramirez, Gunnar H. Rasmussen, Alfred Raymond, Philip D. Smith, Leonard F. Trottier, Spencer H. Van Gelder, Sergius von Oettingen, Max B. Wilkerson, Jr., Curtis R. Wilson, Theodore Yudakufski.

Committees: Guidebook: Martin E. Morrison. Publicity: George Koltanowski, Chairman; Martin E. Morrison (ex officio). Tournament Administration: George Koltanowski, Chairman. Tournament Director Certification: Martin E. Morrison. Tournament Rules: Martin E. Morrison, Co-chairman. Some committee appointments are pending.

***THE COMPLETE, OFFICIAL STATE CALENDAR AND CLEARINGHOUSE
FOR NORTHERN AND CENTRAL CALIFORNIA TOURNAMENTS
OFFICIALLY SANCTIONED BY THE CALIFORNIA STATE CHESS FEDERATION***

Purpose: To avoid conflict, to publicize, and to promote attendance at California tournaments.

Method: Chess Voice has charge of data and coordinates tournament dates.

Procedure: Tournament organizers submit to the Editors (address and telephone number on page 2) their proposed tournament dates as much in advance as possible (annual dates must be submitted each year). Tournaments free of conflict are listed without charge.

Important Note: Neither this published Calendar nor the "Tournament Life" section of Chess Life & Review should be relied upon by organizers for finding clear dates, as data often change substantially between issues, and the clearinghouse maintains data not found in the Calendar.

Calpoints: To determine Central California's two qualifiers to the California State Chess Championship are awarded at all USCF-rated weekend tournaments sponsored by the CCCA or its affiliates (Calpoint tournaments are capitalized). Players must be members of the CSCF before entering a Calpoint tournament in order to acquire points for that tournament.

Listing: Includes date, title, site, restrictions, total prize fund, entry fee, beginning of registration, tournament director. Only USCF-rated tournaments or sections of tournaments are listed.

Further Details on Tournaments Listed: Contact the Editors.

*

- 10/7-8....CCCA'S SAN LEANDRO CENTENNIAL-BICENTENNIAL, BANCROFT JR. H. S., CAFETERIA, 1150 BANCROFT AVE., \$500, \$5 (\$10 M/EX), 10 A. M., MORRISON, MEYERS
- 10/21-22...FIGHT OF THE BUMBLER B, CASA ALVARADO CHESS CEN., 467 ALVARADO ST., MONTEREY, UNDER 1800, CASH, \$10, 9 A. M., YUDAKUFSKI
- 10/21-23...Capps Memorial, Mechanics Inst. Chess Rm., 57 Post St., 4th Fl., San Francisco, \$1130, \$17, 11 a.m., Hoppe
- 11/11-12...REDWOOD CITY OPEN, REC. ACTIVITY BLDG., 1400 ROOSEVELT AVE., \$500, \$10, 9 A. M., TED SYRETT
- 11/18-19...CCCA'S WEST COAST OPEN, STUD. UN. BLDG., 4TH FL., TELEGRAPH AVE. & BANCROFT WY., UNIV. OF CAL, BERKELEY, \$1050, \$5 (\$15 M-A), 10 A. M., MORRISON, MEYERS
- 11/23-26...American Open (A Nat. T.), Nautilus Rm., Miramar Hotel, Ocean Ave. & Wilshire Blvd., Santa Monica, \$3500, \$25 (\$20 under 21, \$15 under 18), 8 a.m., Bragg
- 12/2-3....MONTEREY CO. CHAMPIONSHIP, CASA ALVARADO CHESS CEN., 467 ALVARADO ST., MONTEREY, YUDAKUFSKI
- 12/9-10....CCCA'S SAN FRANCISCO BAY AREA AMATEUR OPEN, OAKLAND CEN. YMCA, 2101 TELEGRAPH AVE., UNDER 2000, \$600, \$7.50, 10 A. M., MORRISON, MEYERS
- 1/6.....CCCA'S 1-DAY ROUND ROBIN, WALNUT CREEK REC. CEN., CIVIC DR., \$8 PER 4-MAN SEC., \$4, 9 A. M., SHORMAN
- 2/17-19....CCCA'S GRAND PRIX, STUD. UN. BLDG., 4TH FL., TELEGRAPH AVE. & BANCROFT WY., UNIV. OF CAL., BERKELEY, \$1750, \$15, 10 A. M., MORRISON, MEYERS
- 2/24-25....CHERRY TREE OPEN, CASA ALVARADO CHESS CEN., 467 ALVARADO ST., MONTEREY, CASH, \$7, 9 A. M., YUDAKUFSKI
- 3/11-16....National Open (A Nat. T.), Stardust Hotel, Las Vegas, NV.
- 3/31-4/1...CCCA'S SAN JOSE REGIONAL, CEN. YMCA, 1717 THE ALAMEDA, \$750, \$7.50 (\$12.50 M/EX), 10 A. M., MORRISON, MEYERS
- 4/28-29....CCCA'S WESTERN OPEN, STUD. UN. BLDG., 4TH FL., TELEGRAPH AVE. & BANCROFT WY., UNIV. OF CAL., BERKELEY, \$1000, \$10, 10 A. M., MORRISON, MEYERS
- 5/26-28....OFFICIAL CLASS CHAMPIONSHIPS OF CAL. (A STATE T.), DEL WEBB'S TOWNEHOUSE, 2220 TULARE ST., FRESNO, \$1000, \$15+CSCF, 10 A. M., MORRISON, MEYERS. HELD IN CONJ. W/ CAL. STATE CHAMPIONSHIP, NO./SO. MATCH, CSCF BANQUET & ANNUAL MEETING.
- 6/9-10....CCCA'S REGIONAL, \$500, \$5 (\$10 M/EX), MORRISON, MEYERS
- 7/14-15....CCCA'S CHAMPIONSHIP OF CEN. CAL., STUD. UN. BLDG., 4TH FL., TELEGRAPH AVE. & BANCROFT WY., UNIV. OF CAL., BERKELEY, \$800, \$5 (\$15 M-A), 9:30 A. M., MORRISON, MEYERS
- 8/4-5.....CCCA'S HAYWARD REGIONAL, MEEK EST. MANSION, MEEK PK., 240 HAMPTON RD., \$500, \$5 (\$10 M/EX), 10:30 A. M., MORRISON, MEYERS
- 8/12-24....US Open (A Nat. T.), The LaSalle, Chicago, IL, \$6500, \$6500, \$35, 10 a.m., Mann, Redman
- 9/1-3.....California Open (A State T.)
- 9/15-16....CCCA'S PACIFIC OPEN, TRAVELDODGE-AT-THE-WHARF, 250 BEACH ST., \$1150, \$10 (\$15 M-A), 10:45 A. M., MORRISON, MEYERS

CCCA'S 1972-73 OLYMPIC TEAM LEAGUE

The CCCA General Membership Meeting of 8 September took a big step, an Olympian step, and approved a new set of league rules. We request you also to take an Olympian step and enter into the Olympian spirit of this new departure. Full information on the league and a new set of rules will be supplied to any club requesting them. Then pick your team captains for as many teams as you wish to enter and inform the League Director of your participation. It's as simple as that. Write me at 1155 East 14th Street, Suite 18, San Leandro 94577; telephone: 569-4089 or 483-6088 (24 hours). I look forward to your participation.

NEWS

204 from Seven States Compete in \$1500 Pacific Open

Under the shadow of Coit Tower at San Francisco's famous Fisherman's Wharf, 204 chess players gathered in one of the largest tournaments west of the Mississippi. Represented in the CCCA's 16-17 September Pacific Open were the states of Washington, Oregon, New Jersey, Ohio, Wisconsin, and Alaska, in addition to host state California.

Co-winners were US Master John Grefe and Ziad Baroudi at 4-0, winners of \$200 each. Tying for third and fourth place were US Master Roy C. Ervin and Kon Grivainis, $3\frac{1}{2}-\frac{1}{2}$, for \$50.00 each. First A was Joseph P. Lynch, followed by Romulo Aguilar, Duane Clark, and Stephen Jenkins. Leading the B's were Raymond S. Segal and George Ambrosio; third was Stewart E. Scott. Charles E. Ensey and Marcial M. Padua tied for First C. Charles V. Evans, Anthony Marshall, and Matthew Dickey shared third to fifth place honors. Prizes in each of these classes amounted to \$300.00. Paul Markowitz and David Kittinger split \$125.00 and the First D/E title.

Director of the Open was Martin E. Morrison, with Elwin C. Meyers.

Hayward Tournament Breaks 200 Mark

The setting: a nineteenth-century mansion and grounds converted into a park by the Hayward Area Recreation and Park District. The expected turnout: 125. The result: a 201-player tournament, the third largest ever held in Northern/Central California. Such was the Central California Chess Association's Hayward Regional, held 5-6 August, one of the more unique tournaments held in California over the year, as players choose whether to play inside the historic mansion or outside in the shaded park area. Winners in the mammoth event were Roy Ervin (1st Master/Expert), Thomas G. Dorsch (1st Expert), Kon Grivainis, Alex Suhobeck (2nd-3rd Expert); John L. Peterson (1st A); Robert E. Anderson, Kerry H. Lawless, David C. Thomson, Jon A. Sjogren (2nd-5th A); Kevin D. Olwell (1st B), Elmo Mugnani, Dennis F. Claudio (2nd-3rd B). The lower sections comprised over 50% of the tournament, including 74 players unrated or participating in their first tournament. Victors were Vincent C. Hikida, Grayson W. Perkins, Harry F. Wartnick (1st-3rd C); and Glenn A. Griggs, Leo C. Gines, Leon H. Hopkins (1st-3rd D/E). \$700 in prize money was awarded. Director was Martin E. Morrison with Elwin C. Meyers.

*

Grefe Takes Championship of Central California

John Grefe, now a television personality from his appearances on local television with commentary on the Spassky-Fischer Match, added another gem to his crown by winning the Central California Chess Association's Chess Championship of Central California. One hundred fifty-two players competed over the weekend of 15-16 July under the direction of Martin E. Morrison with Elwin C. Meyers. Other winners in the Open Division were David L. Amkraut, Dr. Ira Pohl (1st Expert/A), Michael R. Ewell, Michael W. Tomey (2nd-3rd A), Karsten Henckell, Steven S. Joplin (1st-2nd Unrated). The Amateur Division was headed by Ronald J. Byrne, Francisco J. De Silva, Charles R. Nevins, Kevin D. Olwell (B), David W. Cowles, Peter F. Freier, Vincent C. Hikida, Richard C. Hinton, Steward L. Katz, Dan L. Pierce (C), Igor Gritzai, Richard W. Paige (D/E), Stephen Jenkins, Gilbert L. Jorgensen (Unrated). The tournament set a record for the Berkeley area.

*

Wilcox Ties with Fritzing, McCormick in International Open

The International Open Chess Tournament, held this year for the eighth time in picturesque Monterey, was hosted on 23-24 June by Theodore Yudekufski, Games Director of the Casa Alvarado Chess Center. Rex Wilcox captured the first-place trophy in a tie with Dennis G. Fritzing and James H. McCormick. Also awarded trophies in their respective classes were Richard Bustamante (Expert), David Sewell (A), Felix Villarreal (B), William J. Baker (C), Michael Kunz (D

& Under), Dan E. Meyers (Unrated), Barry G. Nelson (Junior), and Nora O. Harris (Women's). The tournament attracted 132 players.

*

Navy Qualifies Players to National Armed Forces

The Twelfth Naval District held its Championships to qualify players into Pacific Coast Naval Chess Championships. Qualifying were Howard A. Sachs and Marcial M. Padua. The tournament was held 31 July-2 August at Hunter's Point, San Francisco. In the regional championships these qualifiers, together with two from each of the Pacific Naval Districts, competed 6-7 August at Moffett Field for a chance at becoming a member of the Sea Services team, to compete in Washington, D. C., against teams from the Army and Air Force. Scott K. Liddell was clear winner of the regional, with Randall K. Greenup the runner-up. The tournaments were directed by Martin E. Morrison.

*

Baroudi and Jones Take LERA/Sunnyvale

In the LERA/Sunnyvale Open Chess Championship, held 2-4 September, Ziad A. Baroudi tied with C. William Jones for first-place honors, 5-1. Roy C. Ervin was third. Winning top class prizes were Robert E. Anderson, Flyn L. Penoyer, Stewart E. Scott, the enigmatic Alexandra Andrews, and Glenn A. Griggs. Unrated sections were won by Christopher Reeves and Gabriel Sanchez.

*

Sacramento City and Camellia Booster Championship

Thomas G. Dorsch placed one-half point ahead of Sergius von Oettingen to place first in the Sacramento City and Camellia Booster Championship, held 17-18 June. Tying with von Oettingen was Dr. Benjamin L. Gross. William Rebold and Tony DiMilo co-directed.

AFFILIATE NEWS

We have not received material from affiliates not listed here. Submit material on affiliate activities to the Editors (address on page 2).

BERKELEY CC . . . Not even pausing for a summer recess, the Berkeley Chess Club continued to draw its goodly crowd. One hundred seventeen players competed in its Summer Open, held June and July. Top scorers were Beauregard A. Hardeman, Jr. (6-2), David B. Teplov (5-3), Padraic Neville, William L. Winocur (4½-3½), Michael Morley (5-3), Dr. Richard O. Hansen, Wilmont H. Mc Cutchen, Marc McNow, Warren E. Westrup (4-4), and Robert J. Fojt (3½-4½). The club's director, Martin E. Morrison, did tournament duties.

CASA ALVARADO CHESS CENTER . . . Would you believe—a Cosmic Inter-Galaxy All Universe Chess Championship? Well, that is exactly what took place in May and June at the Center (Base?) with Theodore Yudakufski at the control panel. The following cosmonauts won commands: David Henry (Inter-Galactic Division), Gerard Geretl and Ronald Erter (Cosmic Comet Division), Remy Miranda (Asteroid Belt Division), and Luther Hert with Robert Pace (Celestial Meteorite Division). [TY]

SALINAS CC . . . Challenging the Casa Alvarado Chess Center to a match, the club barely lost 2½-3½. [TY]

SANTA ROSA CC . . . Twenty new members entered the club as a result of a membership tournament held 4 August. [Lee Henderson]

STOCKTON CC . . . Robert Leigh led a field of seven to win the club's USCF Rating Tournament No. 6 (July-August 1972). Robert R. McIntyre and Norris Shultz took second. [RRM]

BOOK NOTES

By DAVID L. AMKRAUT, USCF Expert

"THE BALLAD OF BOBBY FISCHER," (record) sung by Joe Glazer and the Fianchettoed Bishops. Available from Collector Records, Suite 209, 8422 Georgia Avenue, Silver Spring, MD 20910.

In addition to everything else, Bobby is now being idolized in song.

Sung in twangy, country-music style by Joe Glazer and the Fianchettoed Bishops, the seven-minute "Ballad of Bobby Fischer" relates Bobby's career from the beginning ("He opened his mouth on the day he was born . . . and said move that pawn") through his school days ("Sittin' in the classroom he barely could think, 'cause chess was his food, chess was his drink") on through the Interzonal and the Candidates Matches ("Despite his attempts to innovate Larsen was bent right out of shape") and concludes with Bobby Fischer Champion of the World and a disgraced Boris Spassky being hustled off to Siberia.

***UNDERSTANDING CHESS LAWS AND TOURNAMENT DIRECTION:

A DIALOGUE ON PAIRINGS***

By MARTIN E. MORRISON, Co-chairman, USCF Tournament Rules Committee

Questions and comments from readers on chess laws and tournament direction are welcomed. Contact the columnist at P. O. Box 1622, Oakland, CA 94604; (415) 582-1973.

*

"The Pairings . . . A Snow Job," by Erle H. Perry

It has been argued there is no luck in the game of chess. This may be about 75% true in skittles play among equally rated players. But there is a very definite margin of luck in tournament play because of the Harkness pairing system which is dearly loved by the higher rated aces. How this unfair system got such a foothold in today's tournaments is a mystery. The true winner in most tourneys is not determined by ability but by the luck of the draw.

Observe the opening pairings of any tournament without the upper and lower sections split and competing in class. I've seen Masters paired against "C" players. If it were not so ridiculous, it would be tragic. I've seen good "B" players competing against a beginner who didn't know how to set up the pieces properly. Never has the old saying, "Where there is no contest, there is no sport" been so evident as in this Harkness system and it does go beyond the first round at times.

The competent and dedicated Tournament Directors will tell you that the top three grades of rated Chessmen will not enter a tourney in which they can't have their set-ups of weak players for the first 2 or 3 rounds. These aces have lived with the sweetheart Harkness pairings for so very long they will argue its one-sided merits and how it builds a tournament to an exciting climax. Hogwash! They milk these Open Tourneys for all they can and most of these pampered Masters refuse to pay the entry fee and some of the golden-haired Masters demand expenses. Still they expect to have the pigeons supplied via the Harkness pairings. . . .

And to pour salt into my wounds, I've had these top-rated aces who whipped me with such glee in the early rounds come crying to me at tourney-end and blaming me for not winning later matches to improve their tie-breaking points. My heart bleeds for these poor souls.

Oh, I forgot there is no luck in chess . . . Or is there?

*

"No Snow in Florida," by Martin E. Morrison

Erle H. Perry's article, "The Pairings . . . A Snow Job," makes good reading, and many of the points raised are sadly too true. It would be a mistake, however, to attribute the major blame for any shortcomings in the pairings of Swiss tournaments to the Harkness Pairing System. Rather, it was Kenneth Harkness (who, by the way, now lives in Florida) perhaps more than anyone else who was responsible for bringing below-expert players into weekend chess tournaments as a result of his refinements of the Swiss System.

No sensible person could deny the substantial role luck plays in chess tournaments, as it does in all other sports. When the batter gets a "lucky hit" or when the receiver makes a "lucky catch," we don't complain that luck ruins the game. In chess, Harkness is the first to admit that no matter how refined the pairing system is, the element of luck will—and to some degree should—be present in a tournament. In the Official Chess Handbook (p. 118) Harkness writes: "In fact, it is the sporting element of luck that attracts large fields. Any strong player might win the title. A player who 'gets the breaks' in the pairings may shoot ahead and win a prize. . . . All these possibilities produce tension, suspense, and excitement, with the factor of luck ever present. So far as we know, the element of chance has never diminished interest in any sport [p. 118]." It must be remembered too that in many ancient forms of chess dice were used to introduce an additional element of luck into the game.

The question still remains, however: what can be done about the gross inequities Mr. Perry cites. I would suggest two principal counteractions.

(1) Modify the form of the traditional one-section, large weekend tournament. Contrary to Mr. Perry's experience with masters and experts, and Harkness's statement that one of the amateurs may get the thrill of a lifetime if he defeats a master, I find that by and large masters and experts fear losing large numbers of rating points if defeated by lower-rated players, and that the lower-rated players prefer to play other players in their class. Here in Central California, I have introduced tournaments of three sections (Master/Expert/A, B, C/D/E) to five sections (Master/Expert, A, B, C, D/E). Comments from players indicate that the vast majority prefer such arrangements, and large one-section tournaments, which the Swiss System was never meant to accommodate (a five-round tournament is meant for a maximum of 32 players), are much less frequent.

(2) Improve the efficiency of the rating system. The more accurate and current the ratings become, the more accurate Swiss pairings, which are based substantially upon ratings, will become. In accordance with a resolution adopted by the USCF Board of Directors at its August 1972 annual meeting, monthly rating supplements will be sent to USCF affiliates and certified tournament directors beginning January 1973. Thus, ratings will be issued no later than an average of two month after the tournament. Computerization of the ratings, still some years in the future, might improve even upon this figure.

No, Mr. Perry, don't blame Harkness. He has given organizers only a tool. It is up to them to use it in the best possible way.

My thanks to Bruce O'Connor, editor of the Arizona Woodpusher, in which Mr. Perry's article and my reply first appeared.—MEM/

PROBLEMS COLUMN

By RICHARD R. SHORMAN, CCCA Publicity Director

Chess Voice Problem-Solving Contest No. 21

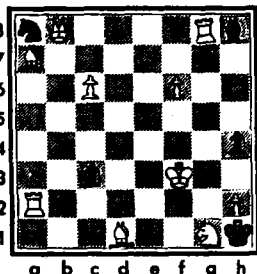
Solutions (the first move only), in algebraic notation, must be received by the Editors (address on page 2) by 15 October. The winner will be the entrant who submits the correct solutions to the most problems. Ties will be broken by lot. The contest is open to all Chess Voice readers.

The prize for Contest No. 21 will be James R. A. Schroeder's Baden 1914, an all gambit tournament among Reti, Spielmann, and others. Annotations are included.

NO. 105

LEAST DIFFICULT

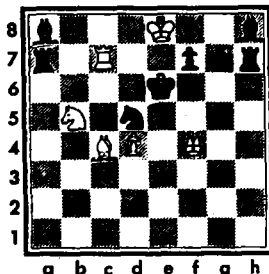
W to play and mate in 2.



NO. 106

MORE DIFFICULT

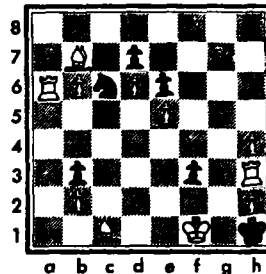
W to play and mate in 2.



NO. 107

MOST DIFFICULT

W to play and mate in 3.



Solutions to Contest No. 20

No. 102: The "three cushion pool-table shot by the queen adds extra elegance to this little problem by Sam Lloyd. 1 Qh6! Kb4. If 1...Ka5, then after 2 Kb3 White's queen mates on b6. 2 Qc1 K-moves 3 Qa3++.

No. 103: Sharp readers pointed out a cook in this problem as given in the original source. Various knight moves, e.g., Nh2, produce mate in one.

No. 104: This clever composition illustrates maximum cooperation between queen and knights to effect mate on an open board. 1 Nc7! c2. Both 1...Ke5 and 1...Ke3 provoke the picturesque 2 Qf4++, whereas 1...Ke4 amounts to the same thing with "half-knights" covering the flight squares to either side of the king. On 1...Kc5 the conclusion is 2 Nb3+ and 3 Qh3++. 2 Qf8 Kc4(3). Any other king move reverts to the previous note 3 Qb4++.

*

Winner of Contest No. 20

The contest drew eleven entrants, of whom nine had two solutions correct (excluding the cook): Richard D. Christian, Brant Corenson, Todd Corenson, Frank Harris, Steen S. Jensen, William E. Lanam, Harry O. Radke, Gabriel Sanchez, and Ronald S. Thacher. By lot Mr. Lanam received the prize for the contest, the tournament book of the 1966-67 Hastings International and USA Championship.

1972 CCCA CHAMPIONSHIP

By HANS POSCHMANN, CCCA Championship Administrator

In the final round of the 1972 CCCA Championship (in knock-out form) Martin L. Sullivan, of the San Leandro Chess Club, defeated Jerry Rogers, of the Hayward Chess Club. Sullivan's victory will be inscribed on the perpetual trophy to be displayed at CCCA tournaments.

-2-

BUSINESS PROCEEDINGS OF THE CCCA

By SALEH MUJAHED, CCCA Secretary



A regular meeting of the CCCA was held on Friday, 8 September 1972, at the Richmond Chess Club, Our Lady of Mercy Church, 301 West Richmond Avenue, Richmond. The meeting was called to order at 8:15 by the Chairman, Martin E. Morrison. The Secretary being absent, the Chairman assumed the secretarial duties for the meeting by general consent.

The total attendance for the meeting was as follows: Edward J. Delgado, Elwin C. Meyers (Berkeley CC); Martin E. Morrison (Berkeley CC, UC Division); Hans Poschmann (Fremont CC); Harold L. Barnett, Wesley A. Nelson (Livermore CC); Peter M. Brown, Jr. (Richmond CC); Robert B. Manners (San Leandro CC). Six of 34 affiliates, eight members.

It was adopted by general consent that the minutes of the previous (8 July 1972) meeting be approved as published in Chess Voice, the CCCA's official organ, with the following correction: That George W. Roust be added to the members attending from the Livermore Chess Club.

It was adopted by general consent THAT THE OAKLAND CHESS CLUB, UPON THE APPLICATION OF KENNETH FONG, RECORDING SECRETARY, BE AFFILIATED TO THE CCCA.

The Treasurer, Mr. Trottier, who was absent from the meeting, afterwards submitted the following report by mail, which was to be entered in the minutes by general consent.

REPORT OF THE TREASURER OF THE CCCA
FOR THE PERIOD 3 JULY TO 5 SEPTEMBER 1972

<u>Receipts.</u>		<u>Disbursements.</u>	
Balance on hand 3 July 1972	\$ 266.53	USCF memberships transmitted	\$ 84.00
Bimonthly assessment of affiliates	\$ 95.00	Editors' expenses	200.00
Fines for late assessment payment	13.00	Paper, envelopes, and stamps	9.35
USCF memberships received	84.00	Clock sales retained	588.00
Charter use	10.00	Balance on hand 5 September	399.18
Hayward debt 1971	20.00	Total	\$1280.53
Clock sales	792.00	Tournament Committee Fund:	\$100.00
	<u>\$1280.53</u>	CCCA membership 5 September 1972:	630

The League Director, Mr. Nelson, gave the following

REPORT OF THE LEAGUE DIRECTOR OF THE CCCA

1972 SUMMER LEAGUES FINANCIAL REPORT AS OF 2 SEPTEMBER 1972

<u>Receipts.</u>		<u>Disbursements.</u>	
Entry fees		Postage	\$ 2.72
7 USCF @ \$2.00		Telephone	2.76
4 Independent @ \$1.00	\$18.00	USCF rating fees	2.20
		Balance on hand 2 September 1972	\$ 10.32

Mr. Nelson submitted written reports on the CCCA Leagues and orally summarized the main points.

Mr. Trottier, Chairman of the Standing Clock Committee, submitted the following report by mail. 48 clocks sold \$792.00. Clock sales retained \$588.00. Clock profit \$204.00. Clocks sold to date 460.

A set of "Rules for the 1972-73 CCCA Olympic Team League" was moved by Mr. Manners, amended, debated, and finally adopted unanimously as follows: /COPY OF RULES ON FILE/.

It was moved by Mr. Manners and adopted 4-1 THAT IT BE THE POLICY OF THE CCCA THAT IS GENERAL MEMBERSHIP MEETINGS BE HELD AT THE BERKELEY CHESS CLUB ON THE SECOND FRIDAY OF A MEETING MONTH, UNLESS A MOTION IS ADOPTED TO HOLD THE MEETING ELSEWHERE.

It was moved by Mr. Barnett and lost 3-3 that the CCCA hold its next meeting at the Livermore Chess Club on the third Friday in January.

It was moved by Mr. Manners and lost 3-3 that an ad hoc committee be established to recommend sites for the CCCA General Membership Meetings to be held in 1973.

It was moved by Mr. Nelson and adopted unanimously THAT THE TOURNAMENT AND CLUB RELATIONS COMMITTEE BE ABOLISHED AND THAT THE PRESENT TOURNAMENT SUBCOMMITTEE BE ESTABLISHED AS A STANDING COMMITTEE, AND THAT THE POSITION OF SCHOOL CHESS COORDINATOR BE ABOLISHED.

It was moved by Mr. Barnett and adopted unanimously THAT THE CCCA CONGRATULATE THE PAST LEAGUE DIRECTOR (MR. NELSON) ON THE SPLENDID CERTIFICATES AND THE WAY IN WHICH HE HANDLED THE 1971-72 SUMMER LEAGUES.

It was moved by Mr. Barnett and adopted unanimously THAT THE CCCA ACKNOWLEDGE AND CONGRATULATE MR. MORRISON ON HIS BEING ELECTED USCF NATIONAL SECRETARY.

It was adopted by general consent that the meeting adjourn. The Chairman declared the meeting adjourned sine die at 11:15 p.m.

US POSTAL SERVICE STATEMENT OF OWNERSHIP, MANAGEMENT AND CIRCULATION

(Act of August 12, 1970: Section 3685. Title 39. United States Code) 1. Title of Publication: The Central California Chess Voice. 2. Date of Filing: 14 September 1972. 3. Frequency of Issue: Bimonthly. 4. Location of Known Office of Publication: Campus Bancroft Building, Room 206, 2440 Bancroft Way, Alameda County, Berkeley, CA 94704. MAILING ADDRESS OF PUBLICATION: P. O. Box 1622, Oakland, CA 94604. 5. Location of the Headquarters or General Business Offices of the Publishers: Same. 6. Names and Addresses of the Publisher, Editor, and Managing Editor: Publisher, Martin E. Morrison and Elwin C. Meyers, P. O. Box 1622, Oakland, CA 94604; Editor, Same; Managing Editor, Same. 7. Owner: Central California Chess Association (ownership equally divided among all members of the Association), P. O. Box 1622, Oakland, CA 94604. 8. Known Bondholders, Mortgagees, and Other Security Holders Owning or Holding 1 Percent or More of Total Amount of Bonds, Mortgages or Other Securities: None. 9. For Optional Completion by Publishers Mailing at the Regular Rates: /s/ Martin E. Morrison, Elwin C. Meyers. 11. Extent and Nature of Circulation (Average No. Copies Published Nearest to Filing Date): A. Total No. Copies Printed 875, 1000; B. Paid Circulation 1. Sales Through Dealers and Carriers, Street Vendors and Counter Sales 0, 0, 2. Mail Subscriptions 855, 906; C. Total Paid Circulation: 855, 906; D. Free Distribution by Mail, Carrier or Other Means 1. Samples, Complimentary, and Other Free Copies 81, 85, 2. Copies Distributed to News Agents, But Not Sold 0, 0; E. Total Distribution 936, 991; F. Office Use, Left-Over, Unaccounted, Spoiled After Printing 39, 9; G. Total 875, 1000. /s/ Martin E. Morrison, Elwin C. Meyers.

CCCA'S 1971-72 LEAGUE AND 1972 SUMMER LEAGUE
By WESLEY A. NELSON, CCCA League Director

1971-72 CCCA League. The Independent Category results were published in the last issue. In the USCF Category the winning teams in the Late, South, and Central divisions were known reasonably early, and the first semi-final playoff match could be scheduled between San Jose (South) and San Jose State (Late). In the North division the deciding first-round match was not reported until very late, and by that time the Central division winners (Berkeley A) were dispersed and could not play. Then it turned out that the San Jose team could not be assembled to play the final match against Concord A. Although it may be true that Concord A has some legal claim to the title "USCF League Champions," I don't believe that any team has earned the title. "USCF Divisional Champion" certificates have been made and distributed. Throughout the season I have kept close watch on the players and captains and have found that they cooperated with each other and me to a high degree of sportsmanship. I wish to extend my thanks to everyone for a fine League.

1972 Summer Leagues.

INDEPENDENT CATEGORY

No.	Team	R1	R2	R3	Score	Rank
1	Martinez	D3	W2	4	1 1/2 - 1/2	2
2	Walnut Creek	L4	L1	3	0 - 2	4
3	Concord A	D1	4	2	1 - 1/2	3
4	Concord B	W2	3	1	1 - 0	1

USCF CATEGORY

No.	Team	R1	R2	R3	R4	R5	Score	Rank
1	Santa Rosa	W6	W3	7	4	- 2	- 0	1
2	Fremont	D3	W6	-	7	4	1 1/2 - 1/2	3
3	Concord C	D2	L1	L5	-	7	1/2 - 2 1/2	5
4	Concord D	D5	-	6	1	2	1/2 - 1/2	4
5	San Leandro A	D4	W7	W3	6	-	2 1/2 - 1/2	2
6	San Leandro B	L1	L2	4	5	- 0	- 2	7
7	Livermore	-	L5	1	2	3	0 - 1	6

HOW TO USE ALGEBRAIC NOTATION

A1	B1	C1	D1	E1	F1	G1	H1
A2	B2	C2	D2	E2	F2	G2	H2
A3	B3	C3	D3	E3	F3	G3	H3
A4	B4	C4	D4	E4	F4	G4	H4
A5	B5	C5	D5	E5	F5	G5	H5
A6	B6	C6	D6	E6	F6	G6	H6
A7	B7	C7	D7	E7	F7	G7	H7
A8	B8	C8	D8	E8	F8	G8	H8

In ALGEBRAIC NOTATION, moves are recorded by indicating the piece involved, followed by the square it is to be moved to. For pawn moves the "P" is left out.

1	Discriptive	Algebraic
1	P-K4 P-K4	e4 e5
2	B-B4 B-B4	Bc4 Bc5
3	C-B3 N-B3	Cd3 Nc3
4	QcPmate	Qc7#mate

TOURNAMENT HUMOR

Player Trefler complained about the smoke from Budin Genov's pipe. "I have to smoke," said Genov. No sooner had he said this when Trefler had a can of Lysol in his hand. One blast and Benov decided he didn't have to smoke after all! /Chess Horizons, March-June 1971, p. 10, Stephen Dann, Editor/

A NOTEBOOK ON THE 1972 US OPEN
By MARTIN E. MORRISON, USCF National Secretary



*The Shelburne
Atlantic City*

SATURDAY, 12 AUGUST. Atlantic City, world famous sea-side resort and—site of the 1972 (73rd) US Open Chess Championship Tournament. Arrived at 10:00 p.m. EDT to the sound of surf and the brilliant light of the mile-long board-walk and amusement park. Little time or desire now for anything but sleep after a five-hour plane trip from San Francisco to Philadelphia and a two-hour limousine ride from Philadelphia to Atlantic City, about 100 miles east.

SUNDAY, 13 AUGUST. Breakfasted with Col. Paul L. Webb, of Phoenix; as assistant tournament director of many US Opens, he is as much a part of Open history as George Koltanowski himself. We were later joined by Col. Edmund B. Edmondson, omnipresent and tireless worker for the US Chess Federation as its Executive Director. He conveyed the gratifying news that USCF membership had grown by 5000 in the six weeks since the start of the World Championship Match. So promising was the membership picture, he related, that USCF could soon give financial support to a number of national and international projects which were impossible before.

ATLANTIC CITY

Walking into the registration room, we found assistant tournament directors Denis J. Barry and William Lukowiak hard at work. To arrive later was chief tournament director George Koltanowski, who was delayed in San Francisco to tape his television series.

6:30 p.m. marked the time for the players' meeting. After outlining the basic rules governing the tournament, Kolty insisted upon midnight adjournment. At the Omaha US Open, he quipped, a player insisted on continuing play, since he had a clearly won position, two queens up. "I learned my lesson, said Kolty—I sat up until 5:00 that morning to await the result of that game!

After the normal pre-first-round chaos had cleared, 354 players were paired, making this the second largest US Open, exceeded only by last year's event at Ventura, California. Defections from the top ranks were evident, however, as many grandmasters, as Lombardy and Byrne, were either in Iceland for the Championship Match or reporting to the media on the Match. In the top ten spots at the tournament were IGM's Bent Larsen and Walter S. Browne, US Senior Masters William Martz, Orest Popovych, L. C. Kaufman, Dr. Anthony Saidy, US Masters Dr. Carl Burger, John Jacobs, Lazlo Binet, and Dr. Leroy W. Dubeck, outgoing USCF President. Donald C. Stone, rated 1568, and Harold Polstein, as the top-rated players in the bottom half of the tournament, had the rare privilege of playing the IGM's. Other luminaries participating included Eric D. Bone, outgoing USCF Secretary; Eva Aronson, Women's Co-Champion; Arnold Denker, former US Champion; Craig Chellstorp, Junior Champion; Craig N. Barnes, High School Champion; and Dr. James Slagle, President of the Braille Chess Association. Not a bad field—with players from the US, Canada, Venezuela, Australia, Denmark, and Columbia. Thirty-nine masters and 69 experts headed the charts.

MONDAY, 14 AUGUST. The first games went pretty much as expected, with the top ten players all winning, though not without some interesting battles, notably Orest Popovych—Ruth Donnelly (No. 114):

1 e4 e6 2 d4 d5 3 Nc3 Nf6 4 Bg5 Be7 5 e5 Nfd7	Rg4 27 Rxb7 Rdg8 28 Rxf7 Rrg2 29 Rrg2 Rrg2 30
6 h4 Bxg5 7 hg Qxg5 8 Nh3 Qe7 9 Nf4 Nc6 10 Qd2	Qd3 Qe8 31 Rh7 Qg6 32 Rh8+ Ka7 33 Kgl Qg7 34 Rh3
Nf8 11 Nh5 Rg8 12 f4 Bd7 13 f5 0-0-0 14 0-0-0	Qg4 35 Qc3 Qg7 36 Nf4 Rgl+ 37 Ka2 Qe7 38 Rh8 Rg7
Kb8 15 f6 gf 16 Nxf6 Rh8 17 Be2 Bc8 18 Bb5 Bd7	39 Rc8 c6 40 Nxe6 Rg3 41 Qc5+ Qxc5 42 dc Re3 43
19 Rh3 a6 20 Nxd7+ Qxd7 21 Ba4 Ng6 22 a3 Nge7	Nf8 Rxe5 44 Nd7 Ne7 45 Re8 resigns.
23 Rdhl Nf5 24 Ne2 Rhg8 25 Bxc6 Qxc6 26 Rlh2	

A few upsets occurred farther down the line, with Chellstorp being held to a draw by Albert Neff, and Jack Feldman defeating Master Charles Powell.

TUESDAY, 15 AUGUST. Daytime activities today included two new features. A 2:00 p.m. meeting was held in the USCF suite, where George Koltanowski, candidate for USCF Vice President, and Martin E. Morrison, unopposed candidate for USCF Secretary, listened to the suggestions and comments put forth by an informal group of USCF Directors. Later in the day Danish Grandmaster Bent Larsen analyzed for a close-knit crowd of about forty players the progress of World Championship Game XIV.

Meanwhile, in the tournament, the going was slightly tougher for the top-rated players in last night's Round II. Larsen, Browne, Popovych, and Saidy all managed to win, but Martz and

Kaufman had to concede draws. There were upset victories by lower-rated players over masters: John Weber over Dubeck (who, to speak in his defense, had been quite ill since the beginning of the tournament), Marcos B. Costa over G. Berner, and Charles Walter over John C. Meyer. The Weber—Dubeck game ran thus (No. 115):

1 d4 Nf6 2 Nd2 Nc6 3 Ngf3 e5 4 de Ng4 5 e4 Bc5	Rde8 19 Qxe6+ Qxe6 20 Rxe6 Rxe6 21 Bh3 Be3+ 22
6 Nb3 Bxf2+ 7 Ke2 Bb6 8 Bg5 f6 9 ef gf 10 Bh4	Kb1 Re8 23 Re1 Kd8 24 Bxe6 Rxe6 25 Bf2 Bxf2 26
d6 11 Qd5 Nge5 12 Re1 Qe7 13 Kd1 Be6 14 Qd2	Rxe6 Bh4 27 Re4 Bg5 28 Nd4 Nxd4 29 Rxd4+ Ke7 30
0-0-0 15 Kc1 d5 16 Qf4 Nxf3 17 gf de 18 Qxe4	c3 h5 31 h4 Bh6 32 Rd5 resigns

WEDNESDAY, 16 AUGUST. After Round II Browne predicted to the newspapers that he would duplicate his 1971 performance by winning the Open. Last night it was a different Browne who drew his third-round game with Expert Carl E. Diesen. The score Browne—Diesen (No. 116):

1 e4 Nf6 2 e5 Nd5 3 d4 d6 4 Nf3 Bg4 5 Be2 e6 6	28 Qd2 Bf6 29 Rea1 Be7 30 Ra4 Bd6 31 Bb4 Bxb4 32
c4 Nb6 7 ed cd 8 h3 Bxf3 9 Bxf3 d5 10 c5 Nc4	Rxb4 Qd8 33 Rba4 Rcb8 34 Qf4 a6 35 ab Rxb6 36 ba
11 Nd2 Nxd2 12 Bxd2 Be7 13 b4 0-0 14 0-0 Nc6	Rxc6 37 a7 Rb6 38 h4 Qe7 39 h5 Ne8 40 h6 Bb7 41
15 Bc3 Bf6 16 b5 Ne7 17 a4 Qc7 18 Re1 b6 19 c6	Rxe5 f6 42 Qg3 Qd6 43 Qg4 f5 44 Qg5 Qe7 45 Qe3
Nf5 20 Qd3 Nd6 21 Qc2 Rfc8 22 Be2 Ne8 23 Bd3	Kf7 46 Qe5 Qf6 47 Qf4 Qe7 48 Qe5 Qf6 49 Qf4 Qe7
g6 24 Qd2 Qd8 25 Qe3 Nc7 26 a5 Be7 27 Ra2 Qf8	50 Qe5 Qf6 drawn

Rushing into the elevator past IM Saily, who jokingly asked the grandmaster, "Shawn, how did it go?" Browne curtly answered, "Draw." Today he was working off the sting of the draw in a tennis game. It seems that tennis is becoming the standard release for players of the game of kings. Browne expects to outshine Larsen in the tournament because, as he says, "Larsen hasn't been playing too well lately. Larsen played slowly and not too accurately against weaker opponents."

Other items of the day. Kenneth Harkness, noted rules authority, initiated discussions on a new set of USCF Tournament Rules. . . . US Master Larry Gilden, who bills himself as an "A. B. in Philosophy and originator of a creative philosophy" had 17 takers for a lecture and discussion. One of Gilden's pupils was Dr. Ariel Mengarini, one of New York's leading psychiatrists. Later, in Round V, Mengarini's opponent, Larsen, and other players were kidding, "Don't let Larsen 'psych' you out." After the surprising result (see below) Larsen was saying, "Don't let any more of my opponents attend that class." Needless to say, Gilden's classes boomed afterwards. . . . A well-known international player was giving odds today at 1:1 Larsen, 1:5 Browne, and 1:15 Saily. . . . Saily gave the first in a series of lectures by top players at 3:30. His subject: How to Judge a Position. Reportedly he used the Weber—Dubeck game from Round II.

THURSDAY, 17 AUGUST. At the close of last night's Round IV the field of perfect scorers had narrowed to nine. Browne had lost the lead in the preceding round, so Larsen was left with Popovych, Binet, Weinstein, Karklins, Mengarini, Meyer, Denker, and Gonzalez. In this round US Master Larry Gilden demonstrated his control over not only philosophy but the chessboard itself in this short win. Gilden—Charles K. Masover (No. 117):

1 e4 c5 2 Nf3 a6 3 c3 d5 4 ed Qxd5 5 d4 e6 6	Bxf8 Kxf8 15 Rad1 Qe7 16 Qh4 b5 17 Ne4 Nxe4 18
Be2 g6 7 0-0 Bg7 8 dc Qxc5 9 Be3 Qc7 10 Nbd2	Qxe4 Rb8 19 Rxd7 Qxd7 20 Qe5 resigns
Nf6 11 Qa4+ Nbd7 12 Bf4 Qd8 13 Bd6 Bf8 14	

Arriving tonight was one of the stellar personalities in organized chess. Chairman of the USCF Rating Committee and theoretician of the USCF rating system which is now used by the World Chess Federation (FIDE) as well, Prof. Arpad E. Elo has become a familiar figure to the world chess family. He is to chair the session of the Rating Committee set for tomorrow.

FRIDAY, 18 AUGUST. This afternoon at 1:00 marked the first of the official meetings of the US Chess Federation committees. The Rating Committee, which is perhaps the most important in the eyes of the chess player, voted to recommend some innovative ideas to the USCF Board of Directors. Two recommendations involved the rate of play. The first would allow tournaments to be ratable if played at the rate of 40/1, instead of the current 30/1. The second would permit an even faster time control, 30/30, in secondary time control periods only. In other action the Committee voted to recommend that match play be rated only as the playoff of a rated tournament, and then only under the sponsorship of an affiliate and a certified tournament director. It seems that match reports have been turned in, the results of which have a probability of one in a million according to the rating system! The word "cheater" was never mentioned, but—.

In the tournament, after last night's Round V, Dr. Ariel Mengarini, a US master, moved into possession of first place by a tremendous upset of Grandmaster Larsen. US Open Champion (1944-47) Arnold Denker defeated Senior Master Laszlo T. Binet, to share the honor of a 5-0 score with Mengarini, whose response to his stunning win was: "I'm not a professional chess player. I play for fun." Browne followed at 4½; Saily and others, at 4. The score Mengarini—Larsen follows (No. 118):

1 d4 Nf6 2 c4 g6 3 Qc2 c5 4 dc Qa5+ 5 Nd2 Bg7	Qb3 Nxe4 16 a3 Nxd2 17 Rxd2 Nc6 18 Bxb6 Qc8 19
6 e4 Nc6 7 Ngf3 0-0 8 Be2 Qxc5 9 0-0 a5 10 Nb3	c5 Bh6 20 Rc2 e6 21 Rd1 Ne7 22 Ne5 Nd5 23 Bb5
Qd6 11 Rd1 Qc7 12 h3 b6 13 Be3 Bb7 14 Nbd2 Nb4 15	Bc6 24 Bxc6 dc 25 Qa4 Bg7 26 Nc4 Qa6 27 Qxc6 a4

28 Qd7 Bf6 29 Ba5 Bd8 30 Bb4 Ra7 31 Qd6 Qb5 32 | Bc5 41 Nf5+ Kg6 42 Be3 Bxe3 43 Nxe3 Rd8 44 Qe4+
 Rxd5 ed 33 Qxd5 Be7 34 Ne5 Rc7 35 Ng4 Rd7 36 | Kg7 45 Nf5+ Kh8 46 Nd4 Qa5 47 Qe6 Rf8 48 Rc3 Qa8
 Qe5 f6 37 Qe6+Kg7 38 Bd2 g5 39 c6 Rc7 40 Ne3 | 49 Nb5 Rg7 50 c7 Qc8 41 Qd6 (sealed move) resigns
 Evidently Larsen's lecture given earlier today, "How to Improve Your Chess," boomeranged on the grandmaster.

SATURDAY, 19 AUGUST. Today was a day of rest from tournament play, but there were plenty of other activities available. Bright and early the US Speed Championship, a five-minute tournament, got underway with thirty players under the direction of USCF President Dubeck, Secretary-to-Be Morrison, and Robert Erkes. Browne was at his best, jumping from one board to another, racking up his wins. The grandmaster takes speed chess seriously. Earlier, when Dubeck asked at the players' meeting what he should do with spectators who called down-flags, Browne immediately shouted, "Shoot them!" At 4:00 Browne took his turn at lecturing, on the timely topic: "Fischer vs. Spassky."

In the evening almost 100 players and friends gathered in the Empress Room of the Denis Hotel for a sumptuous banquet of prime ribs. Guest speakers were George Koltanowski, who always captivates his audience with a seemingly endless repertoire of stories, and Grandmaster Larsen, who gave a tongue-in-cheek account of the foibles of the World Championship Match in Iceland.

Taking the day off to prepare for the resumption of play tomorrow were tournament leaders at the halfway point Browne, Martz, Denker, Popel, and Mengarini, all with 5½ out of 6. An exciting game, full of pins and sacrifices, was turned in for last night's Round VI by IM Saidy and a young Californian. Followitz--Saidy (No. 119):

1 d4 Nf6 2 c4 g6 3 Nc3 d5 4 Nf3 Bg7 5 Qb3 dc 6 | Racl Nb6 16 Ba5 Rd8 17 Rfd1 Be6 18 d5 Bxd5 19 Rxd!
 Qxc4 0-0 7 e4 c6 8 Be2 b5 9 Qb3 Qa5 10 Bd2 b4 | Rxd5 20 Qxd5 Nxd5 21 Bxc7 Nxc7 22 Rxc6 Nd5 23 Bc4
 11 e5 bc 12 Bxc3 Qc7 13 ef Bxf6 14 0-0 Nd7 15 | Nb6 24 b3 Nxc4 25 Rxc4 Rd8 26 Kf1 Rd7 27 Ke2 e6
 | 28 b4 Kf8 29 a4 Ke7 drawn

SUNDAY, 20 AUGUST. After a day's rest the tournament directors were back at the pairings. A disparate, but competent group they were: George Koltanowski, veteran director of numerous US Opens; Col. Webb, his steady, dependable chief assistant; William Lukowiak, stern enforcer of the rules and adept pairer; and Dennis J. Barry, whose major task--superbly executed--was to keep the tournament running smoothly and the players happy. . . . 1:00 today marked the session of the second committee to meet during the Open, the Tournament Director Certification Committee. For over four hours members worked on a revised set of USCF Tournament Rules. . . . Arriving today, from Iceland via Chicago, was USCF President-to-Be Frank J. Skoff. Frank has served the USCF well for over ten years. His latest task, undertaken at great personal sacrifice, is to serve as assistant to FIDE Vice President Fred Cramer, Fischer's official representative at the World Championship Match. The Editor of Chess Life & Review, Burt Hochberg, also put in an evening appearance. To him goes most of the credit for making the USCF magazine a world-renowned journalistic production.

MONDAY, 21 AUGUST. Walter Browne took the lead in last night's Round VII, having won six games and drawn one. He was one-half point ahead of six other players, including Larsen, Martz, Popovych, Meyer, Denker, and expert-rated Russell Garber. Even so, Larsen told the press that his chances of winning were "still very good"; Browne said his were "excellent." The Larsen--S. Popel game, an easy win for the grandmaster, ran as follows (No. 120):

1 d4 Nf6 2 Nf3 e6 3 Bg5 c5 4 e3 Qb6 5 Qcl Nc6 | Bg7 19 Rd2 Rcg8 20 g3 b5 21 Rfd1 Be8 22 Nd6 a6 23
 6 c3 d5 7 Nbd2 Bd7 8 Be2 Rc8 9 Qb1 Bd6 10 0-0 | Qc5 Qb8 24 b4 Na7 25 Qe3 f5 26 Nxe5 Bf6 27 Nxc7
 0-0 11 Bxf6 gf 12 dc Exc5 13 e4 de 14 Qxe4 | Kxc7 28 Ng5 Bc6 29 Rd7 Bxd7 30 Rxd7 Kg3 31 Qe4+
 Be7 15 Radl Kh8 16 Nc4 Qc7 17 Qh4 Rg8 18 Qh5 | Kxc7 32 Qg4+ resigns

This afternoon outgoing President Dubeck called to order the Annual USCF Membership Meeting. The meeting generally listened to reports: Eva Aronson on Women's Chess, Col. Edmundson on International Chess, Prof. Elo on Ratings, Harold J. Winston on College Chess, and Dr. Slagle on Chess for the Blind. Highlights of the meeting included a polished and enticing report on the bid for the 1973 US Open at Chicago, presented by Richard W. Verber, one of the nation's outstanding chess promoters. The report was rounded out by the reading of a telegram addressed to the members by Chicago Mayor Daley. In addition, Editor Hochberg presented selected results of the Membership Survey, which led into a spirited debate on the merits of algebraic notation as against descriptive.

TUESDAY, 22 AUGUST. Round VIII saw Grandmaster Browne maintain a clear lead in the tournament by playing a fine game against Martz. A half point behind the leader is IM Denker with seven points and IGM Larsen, who won an adjourned game with Eugene Meyer. Sixteen-year-old National High School Champion Craig N. Barnes played a fine game against John Weber in this eighth round with sharp combinational play. Barnes--Weber (No. 121):

1 e4 e5 2 Nf3 Nc6 3 Bc4 Nf6 4 d4 ed 5 0-0 Nxe4 | 0-0-0 15 Nxd4 Nxd4 16 cd Qd5 17 Qa4 Kb8 18 Nc3
 6 Rel d5 7 Bxd5 Qxd5 8 Nc3 Qa5 9 Nxe4 Be6 10 | Qc6 19 Nb5 a6 20 Bxc7+ Kc8 21 Na7+ resigns
 Bg5 h6 11 Bh4 Bb4 12 Re2 g5 13 c3 Be7 14 Bg3

At 2:30 p.m. the Annual Directors' Meeting was called to order. This was to be the first session of what amounted to the longest series of directors' meetings in USCF history. Top on everyone's mind at this point was the results of the triennial elections for national USCF office. Two candidates had run unopposed, Frank J. Skoff, of Chicago, for President, and Martin E. Morrison, of Oakland, as Secretary. The vice presidency was a three-way contest between George Koltanowski, Prof. Elo, and Russell W. Miller. Kolty was the overwhelming victor, 212-68-13. He arrived just in time to receive the applause of the directors, as he had been invited to speak to the Rotary Club at noon on "Chess: Newcomer to the International Limelight." Major action centered on the report of the Rating Committee. The minimum time control of 40/1 was adopted, but the 30/30 secondary time control was defeated. Dr. Dubeck reported on the three years of his administration, which set records in membership and international affairs.

WEDNESDAY, 23 AUGUST. The critical phase in the Open arrived last night when Grandmasters Browne and Larsen were paired. Browne came out of the battle victorious, now in first place with 8½ points. Tournament Director Koltanowski predicted Browne as a certain winner of the tournament, stating, "Larsen is capable of doing better. This is unheard of. He never lost a game before in a US Open." The critical game, Larsen--Browne, ran as follows (No. 122):

1 d4 Nf6 2 Nf3 e5 3 d5 d6 4 Nc3 g6 5 e4 Bg7 6	Qxg5+ 19 Kh1 b6 20 Rfd1 Qf5 21 Rxd6 Nxf3 22 Rd8+
Bb5+ Nfd7 7 a4 O-O 8 O-O Na6 9 Bf4 Nc7 10 Be2	Kf7 23 Kg2 Qg5+ 24 Kh3 Qh4+ 25 Kg2 Nd4 26 Rxd4
f5 11 ef Rxf5 12 Bg5 Bxc3 13 bc Nxd5 14 Bd3	Bb7+ 27 Bd5 Bxd5+ 28 Rxd5 Qe4+ 29 f3 Qxd5 30 a5
Nxc3 15 Qd2 Rxf3 16 gf Ne5 17 Bc4+ e6 18 Qxc3	b5 31 Re1 Rd8 32 Re2 Qg5+ 33 Kf2 Rd1 34 Re1 Qh4+

resigns

Preceding today's directors' meeting, a group of 15 chess journalists assembled to form a national association. Credit for organizing the meeting goes to David G. Wolford, editor of the Ohio Chess Bulletin. Elected temporary president was Martin E. Morrison, editor of Chess Voice. After extensive debate the journalists voted 15-0 to recommend to the directors a conversion to algebraic notation in publications, an issue that was one of the most hotly debated issues of the meetings. . . . At the afternoon directors' session the main topic was bylaws, specifically how to insure that the states' desires in choosing directors be guaranteed. Col. Bobbie G. Dudley's suggestion was at long last adopted and implemented, that the names and addresses of affiliates be listed in Chess Life & Review for the convenience of the members. And--the algebraic debate began, introduced by Mr. Morrison.

THURSDAY, 24 AUGUST. In last night's Round X Grandmaster Browne held a draw in a difficult ending a piece down against Larry Gilden. The leaders are now Browne 9, Formanek 8½, Larsen, Gilden, Weinstein, Powell, Kramer, and Piasetski 8. The Browne--Gilden battle proceeded thus (No. 133):

1 e4 Nf6 2 e5 Nd5 3 d4	33 Ral Qd8 34 Ra3 e6 35 Qa2 Qd6
d6 4 Nf3 g6 5 Bc4 Nb6	36 Ra8 Rd7 37 Qd2 Rd8 38 Rxd8
6 Bb3 Bg7 7 ed cd 8	Qxd8 39 Nh2 Qc7 40 Ng4 Kf7 41 Qe3
O-O O-O 9 Re1 Bg4 10	Nd7 42 Ne2 Qd6 43 Nf4 g5 44 Nd3
c3 Nc6 11 Nbd2 d5 12	Bb5 Nde5+ fe 46 Qxg4 Qf8 47 de
h3 Bf5 13 Nf1 Na5 14	Qg8 48 Qf4+ Ke8 49 Nf6+ Nxf6 50
Ng3 Nxb3 15 ab Bd7 16	ef Kf7 41 Qb4 Qe8 42 Qh4 Qg8 53
Bg5 f6 17 Bf4 Rf7 18	g4 Qg6 54 g5 e5 55 Qg4 Bc6 56
Qd3 Bc3 19 Qd2 Qf8 20	f3 d4 57 cd ed 58 Kf2 Qc2+ 59
h4 Nd7 21 Re6 Qd8 22	Kg3 Qd3 60 Qh5+ Qg6 61 Qg4 Qd3
Bh6 Nf8 23 Re2 a5 24	62 Qa5+ Qg6 63 Qg4 drawn
Bxg7 Kxg7 25 h5 a4 26	
h6+ Kg8 27 ba Rxa4 28	
Rxa4 Bxa4 29 Re1 Bc6	
30 Ne2 Qc8 31 b3	
Qf5 32 Ng3 Qd7	

Browne Wins

Chess Tourney

WALTER BROWNE U. S. Open chess champ

The third, and last, directors' session produced a good deal of action. Mr. Morrison's algebraic resolution, calling for an instructional campaign in Chess Life & Review was unanimously passed. A committee to plan an organizational guidebook was formed (Meschter-Bloom-Morrison) by motion of Judge Lackland H. Bloom, who also carried to victory a motion which would require monthly rating supplements to be published to affiliates and tournament directors--a big help in keeping ratings current. Harold J. Winston, eristic but highly productive College Chess Chairman, carried



his motion to disseminate the results of the Membership Survey and also one to recommend the qualification of the US Junior Open winner into the Junior Closed. Director James Politowski carried his resolution to recommend the annual holding of the US Championship. Considerable discussion arose regarding the contents of Chess Life & Review. Allegedly, the Membership Survey mandated "games and more games and still more games." The directors, however, requested more tournament news and publicity (lost), more articles and humor (adopted), more crosstables (lost). Regardless of the salutary debate all were agreed that Editor Burt Hochberg was deserving of the directors' thanks for his outstanding work on the magazine. Finally, Col. Webb was awarded a life directorship, as some small recognition for the outstanding chess promotion he has done. Then, at 5:05 p.m., the longest directors' sessions ever were USCF history.

FRIDAY, 25 AUGUST. By 10:00 p.m. it was all over. Grandmaster Browne drew quickly with Normal Weinstein in the last round to clinch first place with $10\frac{1}{2}$ points. A full point behind him were Grandmaster Larsen, Larry Kaufman, Larry Gilden, Winstein, and Ed Celorio. Scoring 9 were Ed Formanek, Jeffrey Kastner, Eugene Meyer, Arnold Denker, and Len Piasetski. Piasetski was Top Expert; R. Wachtel, J. Dunning, J. Thornley, and I. Zalus shared Second and Third Expert money with $8\frac{1}{2}$. First in Class A was A. Bingaman, $8\frac{1}{2}$, followed by A. Martin and D. Burkhard, both with 8. Top Class B prizes were taken by L. Cohen and D. Hladek, 7 points each. The Class C trophy went to M. Brown with 7 points. Second C was S. Crawford, $6\frac{1}{2}$. The prizes for Class D and below were split by D. Gabai, M. Siler, and R. Kiewe, all with even scores. The Women's trophy went to Ruth Donnelly for a score of 7.

At a nearby Atlantic City restaurant an exhausted, but satisfied, group of players and officials ate and quaffed beer to celebrate the end of a great US tournament: tournament organizer Barry, tournament directors Koltanowski, Webb, Lukowiak, USCF officers Skoff, Morrison, Dubeck, Edmondson, and Grandmaster Larsen. Next year we do it all over again—Chicago 1973!

My thanks to Steve Sawyer, whose daily games bulletins were instrumental in the writing of this article.—MEM

Classified Ads

INEXPENSIVE INSTRUCTIVE BOOKS TO IMPROVE YOUR GAME. CHESS IN TEN EASY LESSONS, Larry Evans, \$2.00. CHESS THEORY & PRACTICE, Morry & Mitchell, \$2.00. CHESS SECRETS REVEALED, Fred Reinfeld, \$1.00. 1001 BRILLIANT WAYS TO CHECKMATE, Fred Reinfeld, \$2.00. CHESS MADE

EASY, Milton L. Hanauer, \$1.00. PRACTICAL GUIDE TO BETTER CONCENTRATION, Melvin Powers, \$2.00. Order from: The House of Values, 9001 East Prairie Road, Evanston, IL 60203. Enclose check or money order; we pay postage for book orders.

JUDE ACERS, WORLD'S MOST EXPERIENCED SIMULTANEOUS PLAYER & LECTURER, 1973 LECTURE & SIMULTANEOUS EXHIBITION TOUR. Exhibitions are free to groups in prisons, jails, grade schools, and hospitals. For an exhibition at a chess club the fee is \$50.00 for 20 boards or less, \$3.00 per board over 20. Fee covers both a 30-60 minute lecture and simultaneous exhibition. Mr. Acers will be in the San Francisco Bay Area 1 February 1973-4 March 1973. Other areas of the US—write for dates. DON'T DELAY. WRITE TODAY TO: Russell W. Miller, President, Washington Chess Federation, P. O. Box 1631, Yakima, WA 98907; tel. (509) 453-5874. Bookings must be made in advance!

CHESS ULTIMATES, VOLUME ONE, \$2.50. THE US BIBLE FOR UNORTHODOX CHESS, 12039 GARDENGATE DRIVE, ST. LOUIS, MO 63141.

THE PRISON CHESS CLUB FUND NEEDS MONEY. All persons who donate \$5.00 or more to the Fund will receive the Elite Chess Bulletin. Donations are tax deductible and should be sent to the Fund at P. O. Box 5268, Cleveland, OH 44101.

THE 1972-73 PAN AMERICAN INTERCOLLEGIATE TEAM CHESS CHAMPIONSHIP will be held 26-30 December, Stouffer's University Inn, Columbus, Ohio. College chess clubs, make plans now to participate in the largest Intercollegiate Championship in history! For further information, contact Tournament Committee Chairman Michelle West, 3502 Colonial Place, Grove City, OH 43123.

US CHESS JOURNALISTS ORGANIZE

Under the impetus of a number of chess journalists present at the 1972 US Open at Atlantic City, sixteen chess reporters met on Wednesday, 23 August, to discuss common problems and share ideas on publishing. The meeting unanimously adopted a strong resolution urging the USCF to begin conversion to algebraic notation in Chess Life & Review and to initiate an algebraic educational program for the US. A modified version of this resolution was later adopted by the USCF Board of Directors. The meeting set up a temporary organization and elected Martin E. Morrison as President. Other chess reporters wishing to associate with the group may write Mr. Morrison (address on page 2) for further information.

CCCA AFFILIATE DIRECTORY
(Current number of CCCA affiliates: 34; members: 712.)

For information on affiliation to the CCCA, for which there is no charge, and the benefits of affiliation, contact the CCCA (address and telephone number on page 2). THE FOLLOWING ARE NOT MAILING ADDRESSES.

*

BECHTEL CC: W 7:30 p.m.; 11th Fl. Conf. Rm., 50 Beale St., San Francisco.
BELLARMIINE CC: M-TH 11:45 a.m.-12:45 p.m.; Bellarmine Col. Preparatory, Univ. & Elm St., San Jose.
BERKELEY CC, INC. UC DIV.: F 7-11 p.m.; Palm Rm., Berkeley Gen. YMCA, 2001 Allston Wy.
CAL. STATE UNIV., SAN JOSE, CC: F 12 m.-4:30 p.m.; Almaden Rm., Col. Union, 211 So. Ninth St.
CASA ALVARADO CHESS CEN., INC. MONTEREY PEN. CC: TU-F 4:30-10 p.m., SA-SU 2-10 p.m.; 467 Alvarado St., Monterey (the Monterey Pen. CC meets at the Center TH 7-12 p.m.).
CHESS FRIENDS OF NO. CAL. (honorary affiliate).
COL. OF THE SEQUOIAS CC: TU 11:30 a.m.-1 p.m.; Student Union, Mooney Blvd., Visalia.
CONCORD CC: F 7:30-11 p.m.; Concord Sen. Citizens Gen., 2974 Salvio St.
FREMONT CC: TH 7-11 p.m.; Cen. Pk. Comm. Gen., 40204 Paseo Padre Pkwy.
HAYWARD CC: M & F, 8-12 p.m.; HARD Bldg., Palma Ceia Pk., Miami Ave. & Decatur Wy.
LIVERMORE CC: 1st & 3rd F 7:30-11 p.m.; Basement, Carnagie Bldg., 4th & "J" Sts.
MARIN CC: F nights; United Meth. Ch. of Tamalpais Valley, Ash & Marin Ave., Mill Valley.
MARTINEZ CC: M 7:30 p.m.; Sen. Citizens Gen., 1111 Ferry St.
MERRITT CC & CHESS TEAM: M-F 11 a.m.-12 m.; Rm. R-137 (MWF), Rm. A-214 (TUTH), Merritt Col., 12500 Campus Dr., Oakland.
OAKLAND CHESS CLUB: F 7 p.m.; Franklin Elem. Sch., 915 Foothill Blvd.
ORINDA CC: TH 7:30 p.m.; St. Stephen's Epis. Ch., St. Stephen's Dr. & Via Las Cruces.
PLEASANT HILL CC: F 7:30 p.m.-2 a.m.; Field House, 233 Gregory Ln.
REDWOOD CITY CC: M 7:30-11 p.m.; Redwood City Rec. Activity Bldg., 1400 Roosevelt Ave.
RICHMOND CC: F 7 p.m.; Our Lady of Mercy Ch., 301 W. Richmond Ave., Pt. Richmond.
SALINAS CC: F 7:30 p.m.; The Steinbeck Lib., 110 W. St. Louis.
SAN JOSE CC: W 7:30 p.m.; San Jose Gen. YMCA, 1717 The Alameda.
SAN LEANDRO CC: M 7:30-11:30 p.m.; Gymnasium, Washington Sch., 250 Dutton Ave.
SAN QUENTIN CC: Calif. State Prison.
SANGER CC: Caffe Midi, 5048 No. Maroa Ave., Fresno.
SANTA ROSA CC: F 7-10 p.m.; Barrett Hall, Santa Rosa Jr. Col., 1501 Mendocino Ave.
STOCKTON CC: W 7-11 p.m.; Multi-purpose Rm., Hoover Sch., 2900 Kirk St.
UC DAVIS CC: M 7-11 p.m.; Games Rm., Memorial Union.
UKIAH CC: TH 8 p.m.; 1st Presbyterian Ch., W. Perkins & So. Dora.
VALLEJO CC: F 7:30 p.m.; Vallejo Comm. Gen. Bldg., 225 Amador St.
VISALIA CC: F 7:30 p.m.; Rec. Pk. Bldg., 345 No. Jacob St.
WALNUT CREEK CC: TU 7:30 p.m.; Sen. Citizens Hospitality House, 1385 Civic Dr.
WEST HILLS COMM. CC: 1st & 3rd W 7-9:30 p.m.; Student Gen., West Hills Col., 300 Cherry Ln., Coalinga.

CALPOINTS FOR CENTRAL CALIFORNIA: INTERIM TOTALS

All Calpoints accumulated through 30 September have been totaled in this system to determine Central California's two qualifiers to the California State Chess Championship. For upcoming tournaments awarding Calpoints, see page 3.

Top Ten. (1) EDWARD ROSENTHAL 45, (2) CRAIG N. BARNES 43, (3) Philip D. Smith, (4) Thomas G. Dorsch, (5) Donald F. Dean, (6-9) Ziad Baroudi, John Grefe, Lawrence R. Hughes, James E. Tarjan, (10-12) Donald F. Gordon, Thomas F. Maser, John L. Peterson.

LIST OF DEFAULTERS BARRED FROM TOURNAMENT PLAY

USCF Tournament Rule 36 reads: "In a swiss-system tournament, any player who does not notify the director in advance that he will be unable to play in any round and then defaults the game by not appearing within one hour after the starting time (FIDE Article 17.2) may be fined the sum of \$5.00 (five dollars) payable to the sponsoring organization. The player will not be permitted to continue play in the tournament and may be barred by the sponsoring organization from any of its tournaments until the fine is paid." The following players have been notified of their violation of this rule and have neither presented a reasonable excuse nor paid the fine. They are barred from participation in future tournaments until the matter is settled.

HIAWATHA BRADLEY, PHILIP HANSHAW, RICHARD S. HULL, CHRIS JONES, KIKUO KISHORE, HARRY MAYER, ROGER L. WACHTER

EVANS ON CHESS

Believe it Or Not!

LONDON (UP) — A chess set landed at an antiques dealer, Trenor or Stowe, in court for an important exhibition. Police Sgt. David Fox issued a summons at Mr. Stowe after finding the set outside his shop. Each of the 32 pieces showed couples in sexual positions.

At Marinelbone Court, Mr. Stowe has filed \$64 with \$48 when he later told newsmen: "When you look at this against the background of dirty books, cheap strip clubs and dirty films, this set is something to be laughed at — not something to be considered indecent."

PITTSBURGH (UP) — Wendon Joseph Briarley disclosed he and a prisoner failed to return to Western Penitentiary-Mellon chess match. The champion chess team of the Wall Knights lost its record 40 member when Verla G. Conrad, 40, serving 3 to 10 years for armed robbery, moved unobserved to an exit at the

university's Skibo Hall after playing a match Sunday. The previous week, prisoner David Moran, serving 2 to 4 years for receiving stolen goods, made a similar move following a tournament at Carnegie-Hellon and is still at large. "I'm afraid we won't be invited back to the university if this keeps up," said the warden. "The officials out there are upset over all the publicity."

JILL ST. JOHN (interviewed in Family Weekly): "Henry Kissinger is really my best male friend. He's a brilliant, thoughtful man and I also enjoy playing chess with him. I am really getting pretty good at it. For some reason, however, when I play chess with Henry, I am not as aggressive as when I play chess with Sean Connery. When I won my first game with Sean, I spent a fortune calling all my friends in the States to tell them about it! After all, a girl wants accomplishments, not just her looks."

#####



UNITED STATES CHESS FEDERATION (USCF) MEMBERSHIPS (AT 20% DISCOUNT): \$4 (under 21), \$8 (21 and over) per annum, new or renewal. Benefits include a monthly Chess Life & Review subscription, eligibility for a USCF (national) chess rating, and discounts on chess books and equipment.

CALIFORNIA STATE CHESS FEDERATION (CSCF) MEMBERSHIPS: \$2.50 (under 21), \$5 (21 and over) per annum. Benefits include a bimonthly California Chess Reporter subscription, use of a CSCF Rating Card (to keep track of the member's approximate updated USCF rating), and eligibility for California State Chess Championship.

USCF AND CSCF MEMBERSHIPS ARE STRONGLY RECOMMENDED.

NEXT CCCA MEETING: Friday, 12 January, 8:00 p.m., Berkeley Chess Club, Berkeley Central YMCA, 2001 Allston Way, Berkeley. Every member of the CCCA, i.e., any person who is certified by the appropriate officer of a chess club or organization affiliated to the CCCA (listed on page 15) to be a member or officer of the affiliate, has full privileges of debate and voting. Nonmembers are welcome.

POSTMASTER: SEND PS FORM 3579 TO Martin E. Morrison Central California Chess Association Post Office Box 1622 Oakland, California 94604, USA Telephone: (415) 582-1973

M. Schwab
Adm. Dir., USCF
479 Broadway
Newburgh, NY 12550

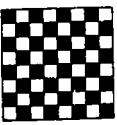
CCCA SALES

Order from the CCCA (address and telephone number on page 2). All items available by immediate pickup or by mail.

CLOCKS: BHB Plastic, light brown plastic case, 6" x 3" x 1 1/2", 60-day guarantee, the most used tournament clock. \$16.50 (\$18 by mail).



SETS: Classic Staunton, tournament size 3 3/4" kings, solid black and white plastic, felted bottoms, practically indestructible, in cotton bag. \$5.50 (\$7 by mail).



ROLL-UP BOARD: Durable, extra heavy quality, good-looking vinyl on cloth backing, can be rolled up when not in use, brown and cream, 2 1/4" squares, 17" x 21 1/4". \$4 (\$5 by mail).

CHESS: Illustrated British-American chess magazine, monthly. \$7.50 per annum. CHESS PLAYER: World's largest chess magazine, complete and fast coverage of big international tournaments, over 2500 annotated games, monthly. \$15 per annum.

NEXT AFFILIATE ASSESSMENTS DUE: 1 October with a grace period of two weeks allowed for payment. Appropriate officers of each affiliate should send 20% per club member, along with a list of the names and addresses of the affiliate's members, to the CCCA Treasurer, Leonard F. Trotter, 5315 MacDonald Avenue, El Cerrito 94530, 233-1595. Fines up to \$2 will be levied for delinquent payment without a valid excuse.