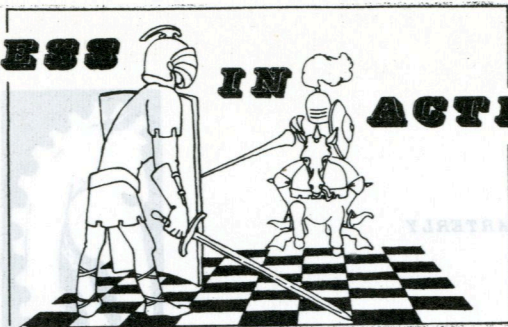
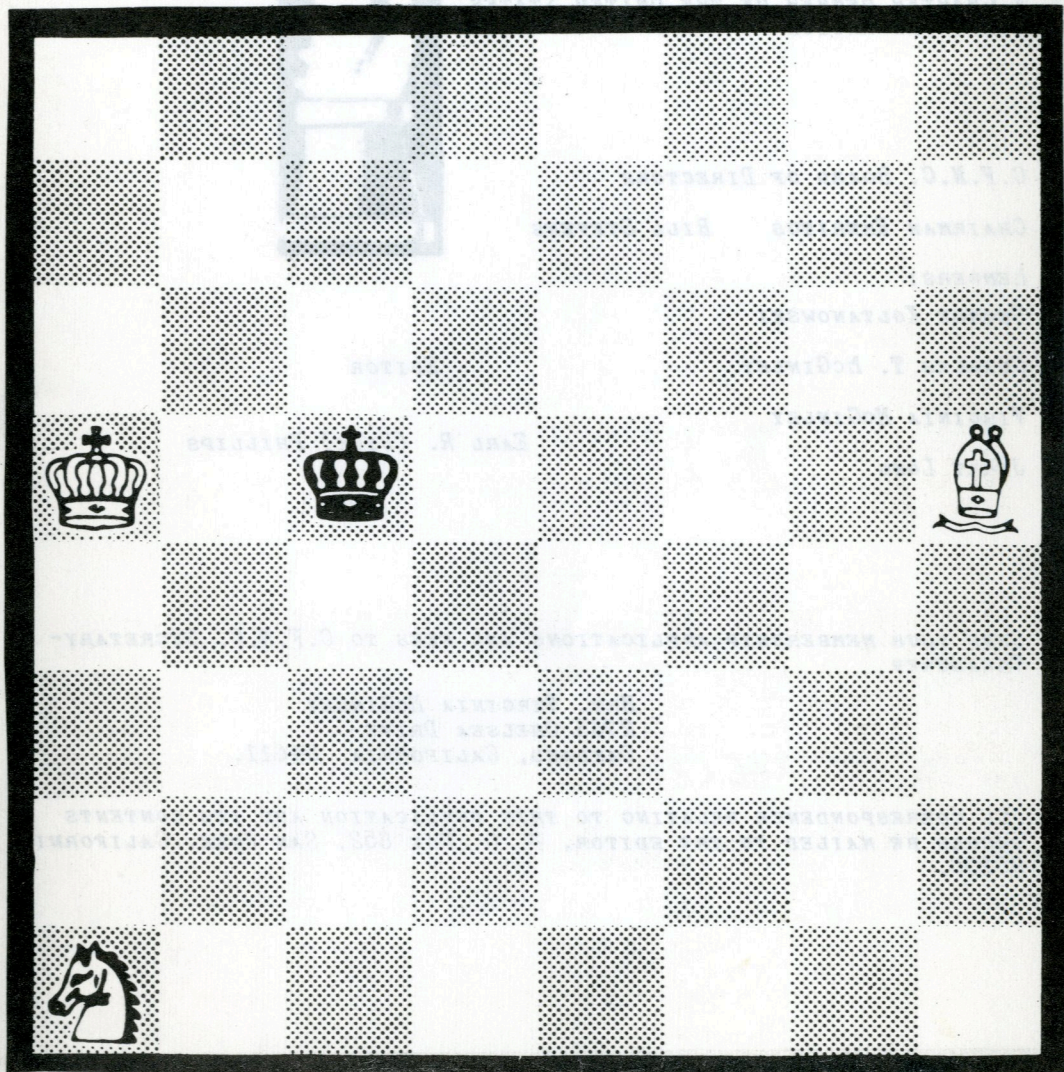


CHESS IN ACTION



SUMMER 1966



BLACK TO PLAY; WHITE MATES IN 33.

PUBLISHED QUARTERLY

BY

CHESS FRIENDS OF NORTHERN CALIFORNIA

A CHARTER MEMBER OF THE UNITED STATES
CHESS FEDERATION



C.F.N.C. BOARD OF DIRECTORS

CHAIRMAN EMERITUS BILL STEVENS

MEMBERS:

GEORGE KOLTANOWSKI

CHARLES T. MCGINLEY

VIRGINIA MCGINLEY

JERRY LONG

EDITOR

EARL R. (DICK) PHILLIPS

SEND YOUR MEMBERSHIP APPLICATIONS AND FEES TO C.F.N.C. SECRETARY-
TREASURER

MRS. VIRGINIA MCGINLEY
2763 CHELSEA DRIVE
OAKLAND, CALIFORNIA 94611.

ALL CORRESPONDENCE RELATING TO THIS PUBLICATION AND ITS CONTENTS
SHOULD BE MAILED TO THE EDITOR, P. O. BOX 652, SAN JOSE, CALIFORNIA
95106.

OUR COVER DIAGRAM IS ONE OF THE FOUR ELEMENTARY MATES WE ALL HAVE MEMORIZED AND CAN'T REMEMBER WHEN THE CHALLENGE IS BEFORE US.

TOURNAMENT RESULTS

THE 1966 PENINSULA OPEN TOURNAMENT WAS A SINGULAR SUCCESS. IN ALL, 120 PLAYERS PARTICIPATED, RANGING IN INTEREST FROM MASTER STRENGTH TO BEGINNER. THE LERA CHESS CLUB AND ITS FINE ORGANIZER, J. E. HURT, PRESIDENT, MERIT WARM ACCOLADES FROM ALL IN THE EAST BAY WHO HAVE AN INTEREST IN THE PROMOTION OF CHESS. WE CONGRATULATE YOU!

THE RESULTS:

MASTER SECTION (6)

K. TULLUS, SAN JOSE	3-2	TIE:	K. TULLUS
D. BLOHM, SAN FRANCISCO	3-2		J. BLACKSTONE
E. OSBUN, SAN JOSE	3-2		ERIK OSBUN
AKI KANAMORI, SAN FRANCISCO	2-3		
R. SHEAN, SUNNYVALE	2-3		
J. BLACKSTONE, SARATOGA	2-3		

E-A (26)

J. MCILRATH, REDWOOD CITY	4½ - ½ PRIZE		
MIKE GOODALL, SAN RAFAEL	4-1 PRIZE		
ROBERT HART, KANSAS CITY, MO.	4-1 PRIZE		
D. FORTHHOFFER, PALO ALTO	4-1 PRIZE		PLACED 9TH

B (39)

W. MONTFORT, MT. VIEW	4½ - ½ PRIZE)		
J. HAUSER, MT. VIEW	4½ - ½ PRIZE)		TIE
R. GRIBBLE, SAN FRANCISCO	4-1 PRIZE		
J. W. WISSELL, MT. VIEW	PRIZE		PLACED 9TH
D. BETANCO, SAN LEANDRO	PRIZE		PLACED 18TH
MARTIN LANE, LA HONDA	PRIZE		PLACED 25TH
CAROL HELLEN, SAN JOSE	PRIZE		PLACED 34TH

C (35)

DENNIS PRIEUR, LOS ALTOS	5-0 PRIZE		
RICHARD ROUBAL, SAN JOSE	4-1 PRIZE		
W. ZIMMERMAN, MILPITAS	4-1 PRIZE		
ELI COLE, SARATOGA	PRIZE		PLACED 9TH
D. BURGESS, SANTA CLARA	PRIZE		PLACED 18TH
DON DAY, REDWOOD CITY	PRIZE		PLACED 25TH
M. B. LOCH, SAN MATEO	PRIZE		PLACED 32ND

UNRATED (14)

BEN JANSEN, HAYWARD 4-1 PRIZE
DAL SMULLIN, REDWOOD CITY 4-1 PRIZE
WALLACE WISE, SARATOGA 3½ - 1½ PRIZE
CASY O'BRIEN, SAN JOSE PRIZE PLACED 9TH

R. HARPER, CUPERTINO SURPRISE PRIZE
GAIL FOLEY, CAMPBELL SURPRISE PRIZE
D. BURGESS, SANTA CLARA SURPRISE PRIZE

1966 WALNUT CREEK OPEN

85 WOOD PUSHERS FROM NORTHERN CALIFORNIA DESCENDED UPON WALNUT CREEK AND EMBROILED THEMSELVES IN A HOTLY CONTESTED TOURNAMENT. THE RESULTS TURNED UP A NUMBER OF SURPRISES AND CLOSE SCORES IN ALL DIVISIONS.

THE RESULTS:

E-A SECTION

MAX WILKERSON, SAN FRANCISCO 4-1/2--1/2 TROPHY
J. MCILRATH, REDWOOD CITY 4-1
PETER GREY, SAN FRANCISCO 4-1
RALPH FORSYTH, SAN FRANCISCO PRIZE
JAMES CORNWALL, SAN FRANCISCO PRIZE

B SECTION

JOHN PREBUS, MT. VIEW 4-1/2--1/2 TROPHY
EARL PHILLIPS, SANTA CLARA 4-1 BOOK
DON OSTROWSKI, BERKELEY 4-1 BOOK
FRANK HANAKER, PALO ALTO 4-1 BOOK
GEORGE KOLOBOFF, BELMONT 4-1 BOOK
RUDY QUINTERO, PITTSBURG WALNUT CREEK AREA
TROPHY
JOHAN WEILER, WALNUT CREEK PRIZE

C SECTION

MYRON JOHNSON, OAKLAND 4-1/2--1/2 TROPHY
CHUCK HELMKA, CONCORD 4-1/2--1/2 TROPHY
AKE GULMES, SAN FRANCISCO 4-1 PRIZE
JAMES GILLIS, SAN FRANCISCO 4-1 PRIZE

(WALNUT CREEK)

FRED MILLER, WALNUT CREEK	4-1	PRIZE
FRED HODGES, CONCORD		PRIZE
JACK DENNIS, RICHMOND		PRIZE
MRS. JOAN OYLER, ANTIOCH		PRIZE
HOWARD MALONE, CONCORD		PRIZE

M. WILKERSON, J. McILRATH AND P. GREY QUALIFIED FOR THE CANDIDATES' TOURNAMENT IN OCTOBER.

* * * * *

THE FINEST CHESS LEAGUE IN THE ELEVEN WESTERN STATES CONCLUDED ITS SEASON WITH THE FOLLOWING RESULTS:

EAST BAY LEAGUE

PLACE	TEAM	WIN-LOSS-DRAW			MATCH POINTS	
1	Concord	7	0	1	7½	½
2	Walnut Creek	4	0	4	6	2
3	Oakland Knights	3	2	3	4½	3½
4	Oakland Knightwits	3	3	2	4	4
5	Berkeley Bears	4	4	0	4	4
6	Oakland Stingers	3	4	1	3½	4½
7	Hayward	2	3	3	3½	4½
8	Berkeley Squares	1	5	2	2	6
9	Richmond	1	7	0	1	7

EL CAMINO REAL LEAGUE

1	Murphy S.Q.	7	3	0	(44-16)	7	0
2	Kelty	6	2	2	(33-27)	7	3
3	St. Francis	5	3	2		6	4
4	San Bruno	4	5	1		4½	5½
5	Mill Valley Addisons	4	6	0		4	6
6	Mill Valley Bishops	1	8	1		1½	8½

PENINSULA LEAGUE

1	Palo Alto	7	0	0		7	0
2	Los Altos	5	1	1		5½	1½
3	San Jose State	3	3	1		3½	3½
4	Lockheed	1	2	4	(20-22)	3	4
5	Burlingame	1	2	4	(18½-23½)	3	4
6	Western Electric	1	3	3		2½	4½
7	Westinghouse	2	5	0		2	5
8	Max Bure	0	4	3		1½	5½

EXPERT LEAGUE

1	Oakland	5	1	2		6	2
2	Berkeley	4	1	3		5½	2½
3	San Bruno*	3	2	2		4	3
4	Murphy S.Q.	1	5	2		2	6
5	St. Francis*	1	5	1		1½	5½

* Result of the San Bruno-St. Francis match pending the adjudication of three games.

EDITORIAL

WHEN YOU READ YOU ARE AWARE THAT THE GEEZER WHOSE INNARDS ARE EXPOSED IN INK IS TRYING TO CON YOU INTO SOMETHING. WE'RE NO DIFFERENT. BEFORE, DURING AND AFTER THE PIECE IT'S EYEBALL TO EYEBALL WITH YOU ALL THE WAY ---- WE'RE TOUTING A DARN GOOD THING!

POTZERS WONDER, SOMETIMES AUDIBLY, WHERE ALL THE SO-CALLED KICKS IN CHESS ARE. TO THEM, PLEASURE IN CHESS IS LIKE JAMMING YOUR PINKIES INTO THE SPEAKER OF A RADIO WHEN FUMBLING FOR GLASSES ON A DARKENED NIGHT STAND FLEETING SUCCESS ACCOMPANIED BY PAIN. WE OFFER A CURE FOR NEITHER THE PAIN OR ITS CAUSE. WE DO HAND YOU HEREWITH PLEASURE ON A PLATTER.

HUMANKIND HAS KNOWN FOR 5,000 YEARS YOU RECEIVE MORE WHEN YOU GIVE MORE. AND WE'RE NOT TALKING ABOUT THE LONG-GREEN EITHER. THE CHALLENGE WE PLACE BEFORE YOU IS THIS:

ONCE A WEEK SPEND ONE HOUR TEACHING CHESS TO SOMEBODY - - ANYBODY. THE CHAIN OF EVENTS IS SURPRISING. THE FIELD IS WIDE OPEN. CHURCHES, SCHOOLS, SCOUT GROUPS, SERVICE ORGANIZATIONS, SERVICE HOSPITALS, ANY HOSPITAL, YOUNG AND OLD, MALE OR FEMALE; THE MORE YOU TEACH THE MORE YOU FIND YOU DON'T KNOW; THE MORE YOU FIND YOU DON'T KNOW THE MORE YOU LEARN, AND THE MORE YOU LEARN, THE GREATER YOUR ABILITY TO ENJOY THE ROYAL GAME!

NOR IS THIS A FANTASY. YE OLD EDITOR IS BY ALL NORMAL STANDARDS A GRADE 2 POTZER; HOWEVER, THERE IS NO GRAND MASTER WHO HAS EVER LIVED WHO CAN CLAIM TO THE ENJOYMENT AND PLEASURES OF CHESS SUCH AS HE. FURTHER, IT IS ASSURED THAT THE PLEASURES IN CHESS WILL EVER INCREASE AND ABOUND.

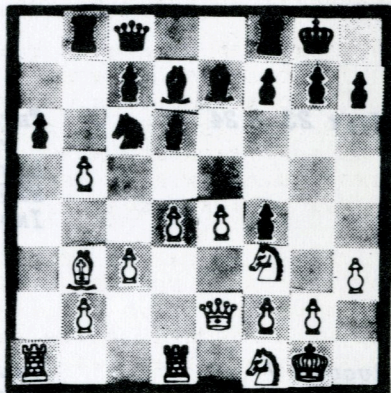
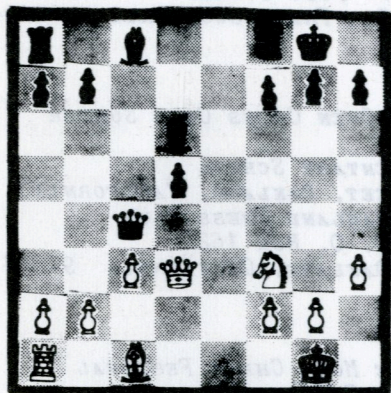
CFNC IS A PHENOMINAL ORGANIZATION. YOUR RENEWED INTEREST IN SUCH A PROGRAM AS OUTLINED ABOVE WOULD CREATE A GROWTH THAT WOULD RIVAL ANY CHESS ORGANIZATION THE WORLD HAS EVER KNOWN. DURING THE SUMMER MONTHS AHEAD SPEND SOME TIME WITH THOSE WHO HAVE DENIED THEMSELVES THE PLEASURE AND PAIN OF CHESS. AND WATCH ALL THREE OF YOU GROW: YOU, THE NEWCOMER AND CFNC.

WHILE WE'RE ON THE COUCH (OBSERVED BY A HEAD-SHAKING HEADSHRINKER) THE EDITOR WISHES TO THANK THE FOLLOWING CLUB CORRESPONDENTS FOR THEIR NEWSWORTHY ITEMS:

DICK

THE BOOK AND YOU

FOR A NUMBER OF YEARS WE HAVE BEEN INTRIGUED WITH THE IDEA THAT 99 OUT OF A HUNDRED CHESS PLAYERS REALLY DON'T KNOW AN ADVANTAGE WHEN THEY SEE ONE. ON THE CHANCE THAT THIS IS NOT A PURELY PERSONAL OBSERVATION, WE OFFER TWO POSITIONS FOR YOUR CONSIDERATION. IT IS BLACK TO MOVE IN EACH INSTANCE. CAN YOU DETERMINE WHETHER THE POSITION IS EVEN OR WHETHER BLACK OR WHITE HAS SOME FORM OF ADVANTAGE? AS BLACK, CAN YOU SET OUT A STRATEGIC GOAL FOR THE GAME AND A TACTICAL GOAL FOR THE IMMEDIATE FUTURE.



BLACK TO MOVE

CALENDAR

JUNE 25 - 26

BERKELEY YMCA OPEN CHESS TOURNAMENT
BERKELEY YMCA, BERKELEY, CALIFORNIA
INQUIRIES: MRS. SHELIA R. SMITH, SECRETARY
807 SAN DIEGO ROAD
BERKELEY, CALIFORNIA

JULY 2 - 3 - 4

THIRD ANNUAL ARTHUR B. STAMER MEMORIAL
CHESS TOURNAMENT
4TH FLOOR, MECHANICS' INSTITUTE
SAN FRANCISCO, CALIFORNIA
INQUIRIES: WILLIAM G. ADDISON
MECHANICS' INSTITUTE
57 POST STREET
SAN FRANCISCO, CALIF. 94104

JULY 23 - 24

THIRD ANNUAL OPEN CHESS CLUB SUMMER
TOURNAMENT
LINCOLN ELEMENTARY SCHOOL
225 11TH STREET, OAKLAND, CALIFORNIA
INQUIRIES: OAKLAND CHESS CLUB
P. O. BOX 1622
OAKLAND, CALIFORNIA 94604

AUGUST 7

VALLEY OF THE MOON CHESS FESTIVAL
SONOMA PLAZA, SONOMO, CALIFORNIA
INQUIRIES: WILLIAM WETSEL
SONOMA VALLEY CHAMBER OF
COMMERCE
461 FIRST STREET
SONOMA, CALIFORNIA 95476

A GOOD PLAYER IS NEVER SO DANGEROUS AS WHEN IN A LOST
POSITION.

SONOMA - AUGUST 7, 1966

(SUNDAY)

THE WORLD REKNOWNED, ONE-OF-A-KIND VALLEY OF THE MOON CHESS FESTIVAL IS NEAR AT HAND AGAIN. THOSE OF US WHO HAVE HAD THE OPPORTUNITY TO TRAVEL ARE PERHAPS MORE APPRECIATIVE OF THIS UNIQUE CHESS EVENT THAN ANY OTHER SINGLE-DAY CHESS EVENT HELD ANY PLACE IN THE WORLD. THE CONTINUING INCREASE IN ATTENDANCE IS ALL THE MORE REMARKABLE WHEN YOU CONSIDER THE FACT THAT THE SONOMA CHESS FESTIVAL TAKES PLACE DURING THE VERY HEIGHT OF THE VACATION SEASON. WE SUGGEST THAT YOU WILL FIND NO OTHER EVENT SO FULL OF INTEREST FOR ALL FAMILY MEMBERS.

THE 16TH ANNUAL VALLEY OF THE MOON CHESS FESTIVAL SPONSORED BY THE SONOMA VALLEY CHAMBER OF COMMERCE, SONOMA, CALIFORNIA, AND DIRECTED BY GEORGE KOLTANOWSKI, INTERNATIONAL CHESS MASTER, WILL TAKE PLACE ON SUNDAY, AUGUST 7, 1966, OUTDOORS ON THE HISTORIC PLAZA. THIS YEAR THE FESTIVAL WILL BE DEDICATED TO THE UNITED STATES CHESS FEDERATION.

MAIN EVENT OF THE FESTIVAL IS A SHORT TOURNAMENT, STARTING AT 10:00 A.M., CONSISTING OF THREE GAMES. TOURNAMENTS WILL BE PLAYED IN GROUPS OF FOUR PLAYERS. EACH GROUP WILL HAVE ITS OWN PRIZES. SOME GROUPS WILL BE FOR USCF MEMBERS ONLY. CLASSES E-A, B, C, UNRATED, BEGINNERS, AS WELL AS SECTIONS FOR WOMEN AND JUNIORS (14 YEARS AND UNDER). SIMULTANEOUS EXHIBITIONS, PROBLEM SOLVING COMPETITIONS, AND MANY MORE ACTIVITIES WILL BE INCLUDED IN THE PROGRAM. TROPHIES, BOOK PRIZES, AND CHESS SETS, AND SPECIAL SURPRISE PRIZES, DONATED BY THE MERCHANTS, WILL BE AWARDED.

A WONDERFUL OPPORTUNITY TO COMBINE CHESS AND PICNICKING FOR FAMILIES AND FRIENDS IN THE WONDERFUL VALLEY OF THE MOON, WORLD-FAMOUS FOR ITS PLACES OF HISTORICAL INTEREST, ITS WINERIES, RESTAURANTS, RECREATION AND SCENERY.

FOR COMPLETE INFORMATION WRITE TO WILLIAM WETSEL, SONOMA VALLEY CHAMBER OF COMMERCE, 461 FIRST STREET, SONOMA, CALIFORNIA 95476.

ENTRY FEE IS: UP TO JULY 31, 1966, \$2.00; AFTER JULY 31 IT IS \$3.00. SIMULTANEOUS EXHIBITION ENTRY IS \$1.00 FOR PARTICIPANTS IN THE FESTIVAL, OTHERWISE IT IS \$2.00. UNITED STATES CHESS MASTER JOHN HUDSON IS ONE OF THE MANY SIMULTANEOUS PLAYERS.

BERKELEY YMCA 1966 OPEN CHESS TOURNAMENT

- PLACE:** Berkeley Y.M.C.A., 2001 Allston Way, Berkeley 4, Calif.
- DATE:** Weekend of Saturday and Sunday, June 25 and 26. The first round commences promptly at 12:00 noon, Saturday.
- REGISTRATION:** From 10:00 a.m. until 12:00 noon, at the tournament site. For better pairings, however, we recommend that you register prior to the first day of the tournament, using the entry blank provided below.
- PRIZES:** Trophies will be awarded to the 1st-place winner in each class. Books and other prizes will go to 2nd and 3rd-place winners in each division, as well as a number of important "surprise" prizes.
- ELIGIBILITY:** Open to all chess players who are or will become members of Chess Friends of Northern California. Membership includes automatic eligibility in all C.F.N.C. events, plus four issues of Chess in Action, the official quarterly publication of C.F.N.C.
- TYPE OF TOURNAMENT:** At least five rounds, Swiss System, with three classes of play: "Expert/A," "B", and "C". The tournament will be fully rated by Chess Friends of Northern California.
- EQUIPMENT:** If possible, bring your own board, chess set and chess clock.
- ENTRY FEE:** \$4.00 to current C.F.N.C. members - \$7.00 to non-members if registration is made prior to June 10, 1966; \$5.00 to C.F.N.C. members - \$8.00 to non-members if registration is made after June 10, 1966.
- HOW TO ENTER:** Detach and mail entry blank with your registration fee.

(ENTRY BLANK)

TO: Mrs. Sheila R. Smith
Secretary, Berkeley Chess Club

807 San Diego Rd,
Berkeley 7, Calif.

PLEASE ENTER ME IN THE 1966 BERKELEY YMCA OPEN CHESS TOURNAMENT

Full Name: _____ Phone: _____

Street Address _____ City: _____

I am a Class _____ player. (If you are unrated, so indicate _____)

Enclosed is \$4.00 for CFNC member (), \$7.00 for non-member () prior to 6/10/66
Enclosed is \$5.00 for CFNC member (), \$8.00 for non-member () after 6/10/66

OAKLAND CHESS CLUB'S
THIRD ANNUAL SUMMER TOURNAMENT

- PLACE AND DATE** OAKLAND CHESS CLUB AT LINCOLN ELEMENTARY SCHOOL, 225 ELEVENTH ST., OAKLAND. SATURDAY & SUNDAY, JULY 23-24, 1966.
- PRIZES** TWO TROPHIES AND TWO BOOKS PER CLASS ARE GUARANTEED. ONE MORE BOOK PRIZE PER CLASS WILL BE ADDED FOR EACH TEN PLAYERS REGISTERING IN EXCESS OF 40 IN NUMBER. THERE WILL ALSO BE A NUMBER OF "SURPRISE PRIZES."
- ELIGIBILITY** OPEN TO ALL CHESS PLAYERS WHO ARE, OR WHO WILL BECOME MEMBERS OF CHESS FRIENDS OF NORTHERN CALIFORNIA.
- TYPE OF TOURNAMENT** FIVE ROUND SWISS SYSTEM IN 3 CLASSES: EXPERT/A, B, AND C. ROUND 1 WILL BE AT 10:00 A.M. SATURDAY; ROUND 2, AT 1:15 P.M. SATURDAY; ROUND 3, AT 4:30 P.M. SATURDAY; ROUND 4, AT 12:00 NOON SUNDAY; ROUND 5, AT 4:00 P.M. SUNDAY. TOURNAMENT DIRECTORS: T. E. ANDERSON AND RAYMOND NG.
- ENTRY FEE** \$4 FOR MEMBERS OF CHESS FRIENDS, \$7 FOR NON-MEMBERS (INCLUDES MEMBERSHIP FEE).
- INQUIRIES** SEE CALENDAR PAGE.

Join the Best with the Rest ...

JOIN NOW

Complete and mail the coupon below

Mrs. Virginia McGinley, Secretary-Treasurer
Chess Friends of Northern California
2763 Chelsea Drive
Oakland 11, California

Enclosed is \$3.00 for annual dues. Please enroll me
as a member of C. F. N. C.

NAME _____

ADDRESS _____

CITY _____ PHONE _____

CHESS FRIENDS OF NORTHERN CALIFORNIA
2763 CHELSEA DRIVE
OAKLAND, CALIFORNIA 94611

LATE NEWS:

PETROSYAN-SPASSKY MATCH FOR WORLD TITLE WAS DECIDED WHEN TIGRAN PETROSYAN WON THE 22ND GAME IN THIRTY-FIVE MOVES. SPASSKY WON THE 23RD GAME IN THIRTY-ONE MOVES. RESULTS OF THE LAST GAME WILL NOT ALTER THE CHAMPIONSHIP RETAINED BY PETROSYAN.

67TH ANNUAL UNITED STATES OPEN CHESS CHAMPIONSHIP, SEATTLE, WASHINGTON - AUGUST 14-26 - REGISTRATION: 8:00 A.M. TO 3:00 P.M., SUNDAY, AUGUST 14, 1966, AT THE ROOSEVELT HOTEL (7TH AVE. AND PINE ST.), OR IN ADVANCE TO: U.S. OPEN CHESS TOURNAMENT, P. O. BOX 505, BOTHELL, WASHINGTON. ENTRY FEE: \$20.00 AND CURRENT USCF MEMBERSHIP. PLACE: NISQUALLY ROOM ON THE SEATTLE CENTER GROUNDS (SITE OF THE 1962 SEATTLE WORLD'S FAIR.)

TOURNAMENT DIRECTOR: GEORGE KOLTANOWSKI, INTERNATIONAL CHESS MASTER.

ADDRESS _____
CITY _____
PHONE _____