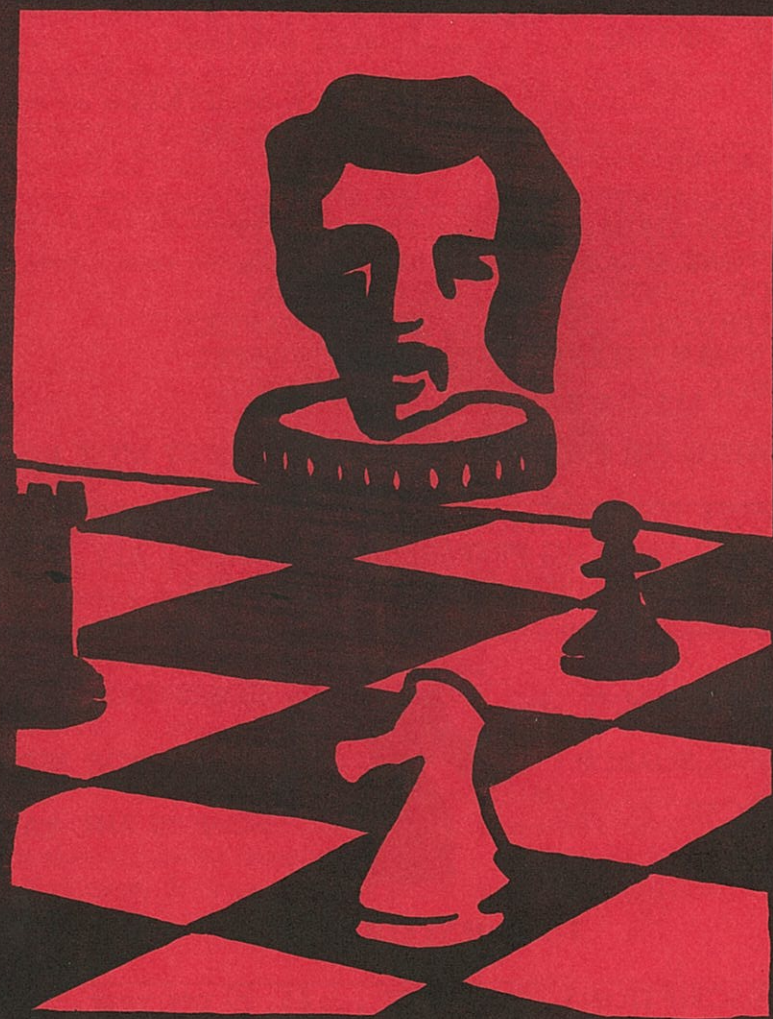


GAMBIT



JUNE - JULY



50 CENTS

GAMBIT

ORANGE COUNTY CHESS MONTHLY

GAMBIT IS A MONTHLY CHESS PERIODICAL. IT'S PURPOSE IS TO INFORM, EDUCATE AND ENTERTAIN THOSE WHO ENJOY THE GAME.

PUBLISHER..... THE CHESS COLLECTION
EDITOR..... ROBERT HOBBS
ASSOCIATE EDITOR..... BARBARA HOBBS
PRINTED BY..... SADDLEBACK PRINTERS AND GRAPHICS
STAFF WRITERS..... ROBERT SNYDER
CAL OLSON
STEPHEN WHITNEY
MONTE CRANE

REPORTERS

SAN CLEMENTE..... ED TIERNEY
MISSION VIEJO..... LEO COTTER
NEWPORT BEACH..... MIKE RUNYON
GARDEN GROVE..... CAL OLSON
FULLERTON..... ED HERNANDEZ
FOUNTAIN VALLEY..... ALLEN WORREL
ORANGE..... GENE OLSON

DRAWING ON PAGE 2 OF BORIS SPASSKY BY MIKE RUNYON

THE COVER ILLUSTRATION THIS ISSUE IS A REPRODUCTION OF A PAPER CUTTING PREPARED AND GRACIOUSLY DONATED TO "GAMBIT" BY MARK CRAWFORD.

TOURNAMENT

SETS, BOARDS

CLOCKS, BOOKS



COLLECTOR SETS

DECORATOR SETS

BOARDS AND TABLES

THE CHESS COLLECTION

SUBSCRIPTIONS TO GAMBIT ... \$5.00 per year
send check or money to the Chess Collection
415 S. Main St. Orange, Ca. 92668

415 S. Main St. Orange, California 92668 (714) 997-9140

THE 30th ANNUAL
U.S. JUNIOR OPEN

August 4 - 8, 1975

Conference Center, San Diego State University
San Diego, California

Open to all under 21 years of age on August 8, 1975

Tournament Director: Grandmaster Isaac Kashdan

\$1,000 in Educational Expenses Guaranteed

1st: \$250 & Trophy & Free entry to 1975 U.S. Open

2nd: \$200 & Trophy & Free entry to 1975 U.S. Open

3rd: \$150 & Trophy & Free entry to 1975 U.S. Open

4th: \$100

\$75 each to First A, B, C, and D or below

Trophy to 1st and 2nd girls, top age 15, 14, 13, 12 and below

ENTRY FEE: In advance, \$10 if postmarked not later than the mail entry deadline of July 28. Make checks payable to "U.S. Junior Open 1975" and send to Mr. Leo Cotter, Box 2094, Mission Viejo, CA 92675. Do NOT mail any entry after July 26. At the site, \$13. Final registration in person at the Conference Center from 1 to 5 PM on August 4.

HOUSING AND MEALS: In SDSU dormitories and dining facilities, all air conditioned. Most rooms are for double occupancy (two beds), but there are 100 with single beds for assignment on a first request basis. Arrival Monday afternoon, check out Friday afternoon, 12 meals: Single \$62 or Double \$54 per person total. To make reservations, or for further information, write to Mr. Leo Cotter, Box 2094, Mission Viejo, CA 92675.

SCHEDULE: 8-round Swiss System (no one eliminated). 40 moves in 1½ hours, then 20 moves per hour; no adjournments before time used by two players totals 5 hours. Round 1 at 7:15 PM on August 4. Two rounds daily at 12:30 and 7:15 PM on August 5, 6, and 7. Adjourned games each morning, August 5 through 8. Final round at 1 PM on August 8, played to a conclusion.

BRING A CLOCK IF YOU HAVE ONE. SETS AND BOARDS WILL BE PROVIDED.



This is the kind of tournament we need. We will be able to have more of them if the response is good. Leo Cotter worked very hard to get the bid to have the tournament in Southern California.

If you are under 21 years of age, play in this tournament. Tell a friend, make some noise, stimulate a little activity. The Chess Collection will have merchandise on sale for all 5 days. Come down and see us.

There will be a five minute rapid transit tournament, and a guest chess master lecture. Bobby Fischer won this National tournament in 1957 in San Francisco. Who will win in 1975?





Poor Boris!

M. Ringen
72

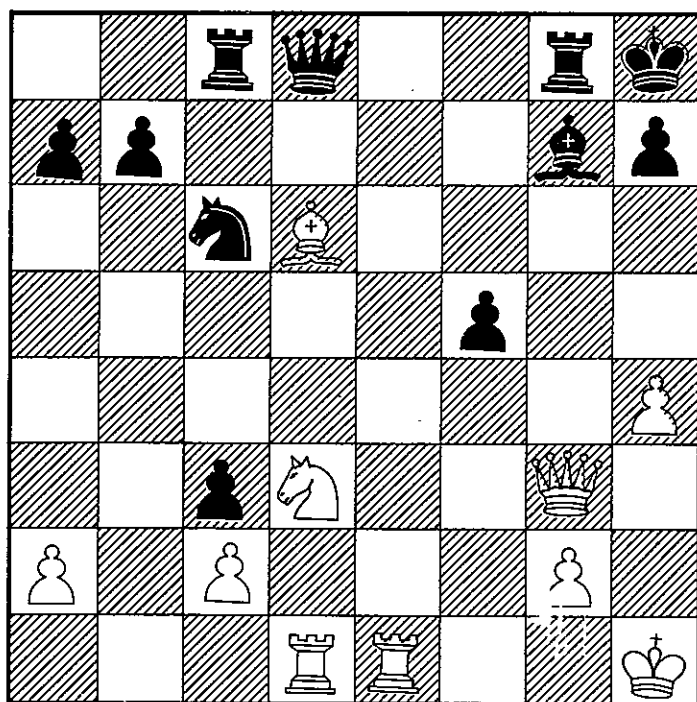
BORIS SPASSKY

To once have been world champion, to loose it and yet maintain your dignity must require tremendous character.

Reflecting back recall the basic class this man carried with him all over the world. He was not only a great chess player, he was a good-will ambassador to his country. He was above all a gentleman - indeed a champion.

Below is a game played from Mel del Plata 1960 with our own ex "champion" Bobby Fischer.

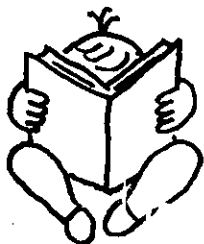
- 1.P-K4, P-K4 2.P-KB4, PxP 3.N-KB3, P-KN4
- 4.P-KR4, P-N5 5.N-K5, N-KB3 6.P-Q4, P-Q3
- 7.K-Q3, NxP 8.BxP, B-N2 9.N-B3, NxN
- 10.PxN, P-QB4 11.B-K2, PxP 12.0-0, N-B3
- 13.BxNP,0-0 14.BxB, RxB 15.Q-N4, P-B4
- 16.Q-N3, PxP 17.QR-K1, K-R1 18.K-R1, R-KN1
- 19.BxP



- 19... ,B-B1 20.B-K5ch, NxB 21.QxNch, R-N2
- 22.RxP, QxPch 23.K-N1, Q-N5 24.R-B2, B-K2
- 25.R-K4, Q-N4 26.Q-Q4, R-B1 27.R-K5, R-Q1
- 28.Q-K4, Q-R5 29.R-B4, Resigns

Lest we forget.

FISH TANK



by STEPHEN WHITNEY

Last month I reviewed several one volume books on openings of the "chronology type" (C.B.). These books give many opening lines with little or no explanatory text. Now, starting with the more detailed first, we will look at a few one volume "idea-type" books (I.B.). These give fewer opening lines but in greater depth as an extended line of play or as a complete illustrative

game. While alternate lines are given the stress is on exposition of long range planning concerns (eg. effective and rapid development, pawn structure, key squares) and analysis of short range problems (tactical motifs etc.).

Chess Openings: Theory and Practise, I.A. Horowitz, Simon and Schuster. 789 pp. Hard-back: \$14.95. Paper-back: \$6.95.

Purchased as a paper-back this book is probably the best value one volume opening book either C.B. or I.B. This book combines the best features of both types of opening books. It has rather extensive coverage (over 2500 separate lines of play), briefly describes the major strategic ideas behind the openings, alerts one to classical opening traps and other tactical hot-spots and often helpfully recommends strong lines of play while explaining why other playable lines are weaker.

By direct reference to extended lines of play well within the middle game and to 400 plus complete games (regretably unannotated), Horowitz shows how opening ideas influence subsequent play.

No index by moves is given, making this book difficult to use if you do not know the name of the opening and variation. In the index complete opening systems are listed first in alphabetical order and then under them their variations also in alphabetical order. More detailed than MCO II! The text then gives various lines of play following "key positions" as: "idea variations", "practical variations", "supplementary variations". Notes for each of these groupings give further lines. Locating a particular line can be quite a task! Steven's Blue Book of Charts to Winning Chess or Sokol'sky's book (to be reviewed) are easier to use.

Few transpositions and move order inversions are given limiting further its use as a reference tool. Copyrighted in 1964 it is the oldest of the books reviewed and opinions have changed on some of the lines given (eg. Ruy Lopez, exchange var.: idea var. 20 (p.108) is given as equal by Encyclopedia of Chess Openings, C, p.219 note 21 (Horowitz, though, may be correct in finding fault). And definite improvements on other lines have been made. In any case, many solid lines of play are offered which will carry the over-the-board player to victory if he follows up correctly.

The Modern Openings in Theory and in Practice, A. P. Sokolsky, Pitman Publishing, 1966. (reprinted in England 1972). 241 pp. Hardbk. \$9.75.

This book is my personal favorite I.B. because of its clarity of presentation and thoroughness of exposition. The author was a finalist four times in the U.S.S.R. Championship and noted for his opening IP-QN4 (which is covered in this book). His playing strength and the apparent care of his translators and editors H. Golombek and E. Strauss are reflected well in this work.

The index lists opening both by name and moves in the clear style of "British Chess Magazine". Well over 300 openings and variations are indexed (about as many indexed as Horowitz's book). * There is even an index of players (about 150) of mostly complete games** (many partial games and positions also are in the text).

Slightly less than the first half of the book is devoted to general principles of development, positional considerations and tactical motifs of the opening and middle game. The exposition gets fairly detailed requiring careful reading but only occasionally is the use of a second chess set advisable to follow analysis. Theoretical discussion is enlivened by usually giving complete games or by following a line of play from the opening until a really decisive advantage is reached. Sokolsky does not leave you hanging wondering what the "mere matter of technique" is to consolidate an advantage gained.

The rest of the book systematically explores twelve opening systems (less usual ones having been presented

Game of the Month

AMERICAN OPEN November 28, 1974
annotated by Scott Innes

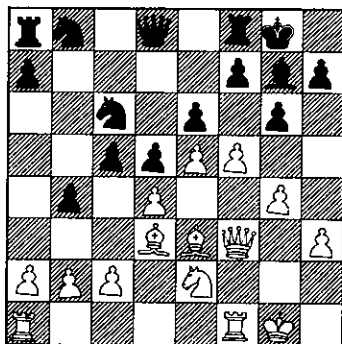
My opponent is one of the leading practitioners of the Modern Defense in the Los Angeles area. In this game however, a timely error (7.P-Q4?) caused by carelessness, not a lack of strategic or tactical mastery does him in.

An interesting game which demonstrates what can happen when a lower rated player is taken at face value.

Scott Innes (1915)

Jerome Hanken (2237)

1.P-K4, P-KN3 2.P-Q4, B-N2 3.N-QB3, P-Q3
4.P-B4, P-QB3 5.N-B3, P-QN4 INTERESTING
6.B-Q3, B-N5 7.P-K5 (Sharper is 7.B-K3 and after 7...
Q-N3 anything can happen, for example 8.Q-Q2, BxN
9.P-Q5!) 7...P-Q4? Not bad in concept but mistimed.
Better was (7...N-KR3 followed by 8.B-B3, P-Q4)
Blacks basic strategy is to solidify the center and trade
off his bad Queen Bishop. He then hopes to pursue
action on the Queen side and against Q5. 8.P-KR3
of course the weakness of 7...P-Q4 shows itself.
Black is forced to trade on Bishop 6 or abandon his
basic strategy. Now Black will not have time to achieve
his objectives because of the many threats against his
King side. 8...BxN 9.QxB, P-K3 10.B-K3, N-K2
11.P-KN4 stopping 11...N-B4 and instating a kingside
attack. 11...P-N5 12.N-K2, P-QB4 13.P-B5! PxpP
would merely be insipid, allowing Black time to organize
his forces. 13...KN-B3. Forced, either pawn capture is
suicide and (13...P-B5 fails to 14.BxP) 14.0-0!, 0-0



Later my opponent casually remarked that perhaps he should have trapped my bishop with (14...P-B5. Then, however, 15.PxNP) if (15.PxKP? 0-0 16.PxPch, KR1 17.BxNP, PxB 18.P-N5, BxP 19.Q-N4, K-N2 20.Q-R4 ((20.PxB, NxP holds)) 20...R-R1 21.QxRch, QxQ 22.P=Qch, QxQ 23.RxQ, KxR 24.PxB, NxP 25.R-B1ch is in whites favor) but not (21.QR6 ch?!! RxQ 22.PxRch, KB1 23.PxB, N-Q2! 24.P-K6 ((24.N-B4, KxP Holds)) 24...N3,K4! plugs the key squares.) (15...0-0 16.PxBPch, KR1 17.BxP) pulls down the shade for if (17...KxB 18.P-N5,K-N3 19.P-R4 wins.) 15.P-B3, solidifying the center.15...QN-Q2 16.P-B6,QNxKP? a miscalculation.(Better is 16...B-R1 17.B-R6 and although Black's game may very well be terminal he can still put up resistance.)17.PxN, NxKP 18.Q-N3 The square Black overlooked.Without this square Black would capture the Bishop with tempo on the Queen. 18...NxB 19.PxB, KxP 20.PxP, P-B5 21.N-B1! forcing the trade of Blacks only defender of the dark squares. 21...NxPN5 22.B-B5, N-B3 23.BxR, QxB only willpower and my lower rating kept my opponent moving, not the board. 24.N-K2, Q-QN1 25.Q-B3, Q-N3ch 26.R-B2, P-B4 27.PxP, NPxP 28.K-R1 Those who cannot stand the sight of blood, please shield your eyes.28...K-B1 29.R-N1, QxP Black has almost succeeded in establishing material equality in four connected passed pawns.However, his wing position renders him helpless. 30.Q-N3, Q-R1 31.Q-Q6ch, N-K2 32.N-B4, K-K1 33.NxP resigns



We are anxious to hear from our readers. Let us know what you like or dislike about Gambit. Feel free to offer suggestions or make requests. Send us your games, stories articles, jokes, or cartoons. This is your magazine, it will only be as good as the support you give it.

THE BLACK DEATH

This was the nickname of Joseph Henry Blackburne, one of the strongest English players of the last century.

Born on the 10th of December in 1841 at Manchester he learned to play chess at the comparatively late age of eighteen.

In 1861 the German master Louis Paulsen was in Manchester giving a simultaneous blindfold exhibition on ten boards. At the time this was the record for simultaneous blindfold play.

Blackburne, who was one of Paulsen's opponents, upon witnessing this feat determined that he should be able to duplicate it and set about his task.

The Chess Players Chronicle for March of 1862 reports of Blackburne playing ten games simultaneously, blindfold. News of his accomplishment resulted in him being invited to play in the London Congress to be held in June and July where both he and Paulsen would also each give a simultaneous blindfold display.

At the Congress Blackburne did not fare well in the tournament, being able only to tie for ninth place with Jacob Lowenthal, but he was more successful with his blindfold exhibition -- winning five games while drawing three and losing only two.

After the London Congress Blackburne resumed his business profession until 1867, when, at the age of twenty-six, he decided to become a professional chessmaster.

Although he rarely did well at match play (one of his worst matches was against W. Steinitz at the West End Club in Feb.-March of 1876 which Steinitz won 7-0!) Blackburne was one of the most successful tournament players of his time. In a tournament career spanning over four decades Blackburne placed first at Berlin (1877), Weisbaden (1880), Berlin (1881), and Hereford (1885). He tied for first with Steinitz in Vienna (1873) but Steinitz won the playoff. Blackburne placed second at London (1872), Nuremburg (1883), and Hamburg (1885) and third at Baden-Baden (1870), Paris (1878), and London (1883).

In later years Blackburne was a participant in the famous tournaments at Hastings in 1895 (won by Pillsbury), London (1899), Ostend (1905-06-07), and (his last tournament) St. Petersburg (1914).

One amusing anecdote told about Blackburne concerns his fondness for strong drink. At a simultaneous exhibition given by him one of his opponents had placed a glass of whiskey beside the board. When Blackburne arrived at this board he suddenly (to the astonishment of his opponent and the spectators) seized the glass, downed the contents, made his move on the board, and continued on. Asked afterward why he had done this Blackburne replied, 'He left it (the whiskey) en prise and I took it en passant.'

He died at Lewisham, England on Sept. 1, 1924.

A mating pattern known as Blackburne's Mate is illustrated in the following game played in London in 1880:

X. (White) -- Blackburne (Black)

1. P-K4, P-K4; 2. N-KB3, N-QB3; 3. B-B4, B-B4; 4. BxPch (?!) Jerome's Gambit, KxB; 5. NxB, NxN; 6. Q-R5ch, P-N3 (6...K-K3!); 7. QxN, P-Q3; 8. QxR, Q-R5; 9. O-O, N-B3; 10. P-QB3? (10. P-Q4!), N-N5; 11. P-KR3, BxPch; 12. K-R1, B-KB4; 13. QxR, QxPch; 14. PxQ, BxPmate.

For The Birds

1944 N. Tustin Ave.; Orange, Ca. 92665

- BIRDS
- AVIARIES

- SEED
- CAGES



PHONE

(714)
637-4321

HOURS

MON. thru SAT.
10 am to 6 pm

AT THE REAR OF TUSTIN SQUARE NEAR THE WATER FOUNTAIN

THE QUICK KILL

By USCF Master, Robert M. Snyder

Most players love nothing more than to crush their opponent in the Opening. One famous player once said, "Before the middlegame and the endgame the gods have placed before us the opening". The following games taken from tournament play illustrates how the lack of opening knowledge can be fatal.

LOS ANGELES OPEN OCTOBER 1972

White - Robert M. Snyder Black - T. Ellis (1942)
1.P-K4, P-K4 2.N-KB3, N-QB3 3.B-B4, N-B3
4:P-Q4, NxKP? A poor capture. Standard book is 4...PxP
5.0-0 (best) and now black can avoid the Max Lange with
5...NxP 6.R-K1, P-Q4 7.BxP (7.N-B3!?! is playable)
QxB 8.N-B3 and white will recover his piece in a well
known book line. 5...B-B4 6.P-K5, P-Q4 (or 6...N-KN5)
7.PxN, PxB 8.R-K1, B-K3 is the famous Max Lange Attack.
For further analysis see the Two Knights Defense, by
Estrin for accuracy which is critical in this opening.
5.PxP....Simple and Best. White recovers his pawn and
makes it difficult for Black's King Knight. 5....B-B4?
The last and fatal blunder. Black should have played
5...N-B4. 6.Q-Q5! Resigns. Black must lose a piece
because of the threat of mate and QxN.

NEWPORT BEACH FALL OPEN 1974

White - Loftsson (Master) Black - Batchelder (Master)
1.N-KB3, P-Q4 2.P-QB4, P-QB3 A good move, though
other moves such as 2...PxP or 2...P-K3 are playable.
Black wants to maintain his Q4 while keeping the QB's
diagonal open. 3.P-Q4...White now goes into a Slav
Defense instead of the Reti Opening after 3.P-QN3, N-KB3
4.P-N3 and now B-B4 or B-N5. 3...N-B3 4.N-B3, P-K3
It is common to close off the QB in QP Openings as the
QNP would then become a target, with white playing Q-N3
sometime after the bishop is developed. 5.P-K3, QN-Q2
6.B-Q3, P-QR3?! If here 6...B-Q3 then 7.P-K4! is
good for white, but simply 6...B-K2 7.P-QN3, 0-0 is
good and solid. 7.P-QN3?! Better is 7.0-0! to meet
7...B-Q3 with 8.P-K4 7...B-Q3 8.P-K4??... A gross
blunder. White should just play 8.B-N2 or 8.0-0.
8...B-N5! White must have had a mental block against
this bishop moving again. 9.B-Q2, BxN 10.BxB, PxKP
Resigns.

RASPBERRY OPEN

March 1972

White - Wardwell

Black - Robert Snyder

1.P-K4, P-K4 2.P-Q3, ...A bit passive, blocking in the KB. 2...N-KB3 or 2...B-B4 3.P-KB4, P-Q3 with a King's Gambit Declined type of set up without the White Bishop at QB4 which is to Black's advantage. 3.P-KB4...The best way for white to play aggressively. 3...B-B4?! A tricky and very risky move, but perhaps ok to play against a weak opponent. 4.PxP, NxP The idea, otherwise black would lose. 5.N-KR3?... Weak. White should have played 5.Q-N4!. If 5.PxN?! 6.Q-R5+ with attacking chances. 5...Q-R5+ 6.P-KN3, NxP!
7.PxN, QxP+ 8.K-Q2, ...Not 8.K-K2? because of QxP+. 8...B-K6+ 9.K-B3, QxP+ Now black has recovered his material; three pawns for a piece all of them passed.
10.P-Q4, Q-K5 11.B-Q3?... Fatal. With 11.R-R2! white could have made things very difficult. 11...QxP+
12.K-N3, Q-N3+ 13.K-B4?... This is no time to get aggressive! 13...P-Q4+ 14.K-B3 ...If 14.KxP 15. Q-Q5 Mate. 14...P-Q5+ 15.K-B4, B-K3! Best! Black develops his bishop mating the king; you see, it is good to develop your pieces, there is no telling what it can do for you!

CHESS SERVICES

PRIVATE LESSONS-Adults-\$5 per hour. Children under 16 yrs. of age-\$4 per hour. One student at a time.

GROUP LESSONS-Adults and Children.

1) Two students-\$3 an hour per student.

2) Three students-\$2.50 an hour per student.

3) More than three students-\$2.25 an hour per student.

TRAVEL CHARGE (lessons at students home)\$1 plus \$.25 per mile traveled both ways.

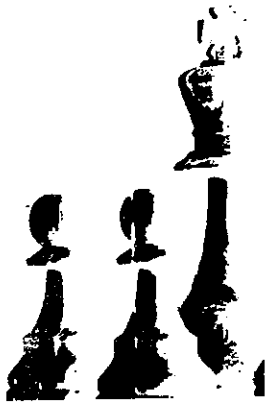
LECTURES-\$15 - \$25 for a one hour lecture.

MAIL LESSONS-\$2 per game, brief analysis. \$1 per position or question. Enclose self addressed and stamped envel.

PHONE LESSONS-\$1.25 per question (on position). All phone charges to student. 714 531-3643.

GROUP INSTRUCTION AT CLUBS, ETC. -\$10 - \$25 an hour.

SIMULTANEOUS EXHIBITION- 1) \$1 - \$1.50 per board for schools. 2) \$1.50 - \$2 per board for clubs. 3)\$2, - \$2.50 per board for stores and profit organizations. Guaranteed number of boards required. Flat fee-\$50 - \$100. Lecture with Simultaneous Exhibition \$10 extra.



EN PRISE

by Robert Hobbs

Any serious chess player in this county should feel an obligation to support legitimate chess functions offered in the area. A handful of hard working individuals continually make efforts to promote the game we all enjoy. Unfortunately, response from the chess public at large is usually very modest. It seems many feel that with or without their presence or interest a tournament or other function will be successful. Well it takes an unbelievable amount of risk and effort by a few to offer something for many. And it requires alot of people one at a time to make any event successful. Each of you are important. We have the facilities and the talent available to make chess boom in Orange County. We also have the interest, yet much of it lies dormant. The burden lies with us all - if you cannot promote at least participate. Support your investment in chess. Wake up to the fact that people will not work indefinitely for a cause that no one responds to. With improved interest there will be continuous major tournaments offered in Orange County. Without any improvement, you will have to continue to travel for tournament play and any other chess related functions. The decision is yours - the availability of chess in Orange County is En Prise.

SPG SADDLEBACK
PRINTERS &
GRAPHICS

IF AN IDEA IS WORTH THE PAPER IT'S
PRINTED ON,
IT'S WORTH CALLING SP&G.

OPEN SATURDAYS

417 SOUTH MAIN STREET • ORANGE, CA. 92668
(714) 997-2820



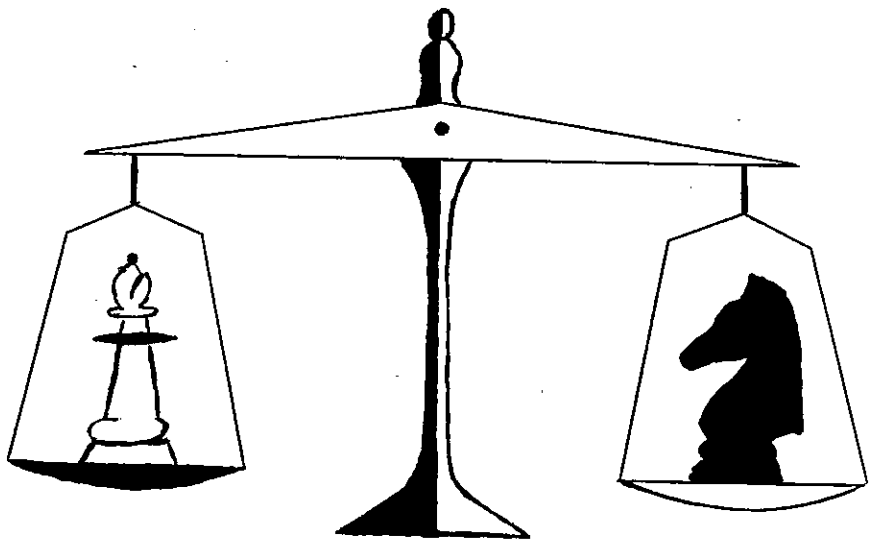
"Chess like love is infectious at any age" - Flohr



"It is always better to sacrifice your opponents men"
-International Grandmaster Savielly Grigrievitch Tartakover



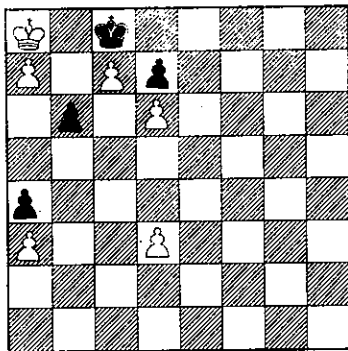
"It is more shameful to distrust one's friends
than to be deceived by them"-La Rochefoucauld



MC

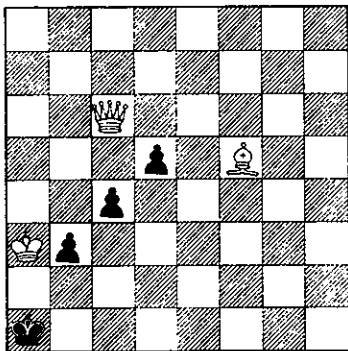
CHESS PROBLEMS

ROPKE



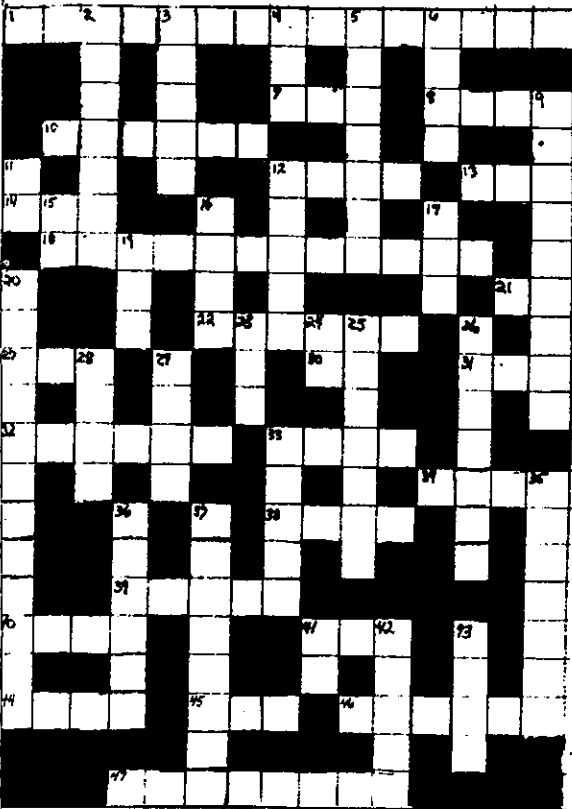
MATE IN 6
EASY EGO BUILDER
TRY IT.

BOSWELL



MATE IN 2

CROSSWORD PUZZLE By Robert Hobbs



1. Orange County Chess Headquarters
7. score
8. capture opponents king
10. a defense P-K4, P-K3
12. tie
13. pawn takes pawn
14. German Book Series
18. one of the most active clubs in Orange County.
21. nation which just lost world championship (ab.)
22. new world champion
27. sacrifice (collog)
30. in passing notation
31. a position in which a piece cannot move
32. only time two pieces move
33. popular chess author
34. governing chess body is U.S. (ab.)
38. squares horizontal to players
39. force, time, and . . .
40. a nice word after a mistake
41. king captures bishop
44. knight takes king rook
45. great grandmaster
46. highest rated player in Orange County
47. site of the 1975 U.S. Junior Open (ACROSS)

(DOWN)

2. vulnerable piece
3. what some people become after a high rating (upside down)
4. what the editor of Gambit is (ab.)
5. opening, middle and . . .
6. an element that can defeat you
9. In Passing
11. queen bishop
12. an evaluated player (upside down)
15. . . . passing
16. one way of attacking more than one piece
17. popular opening book
19. object of game
20. syndicated chess columnist
23. what some chess players make of themselves
24. in passing (upside down)
25. first 15 moves
26. one time world champion
28. what many players play for
29. squares vertical to players
33. time, space, and . . .
35. a recent chess tragedy
36. 2200
37. a style of chess pieces
41. King Pawn
42. famous grandmaster
43. world chess organization

(answers will appear next issue)

Paul Keres 1916-75

The committee on physical culture and sport under the Council of Ministers of the USSR, the committee on physical culture and sport under the Council of Minister of the Estonian SSR, the chess federation of the USSR and Estonian SSR and the Central Chess Club of the USSR with deep regret report that on the fifth of June, 1975, after a brief and grievous illness, in the sixtieth year of life, international grandmaster, honored master of sport, three-time champion of the USSR in chess, KERES, Paul Petrovich, died; and [they] express sincere condolences to the near and dear ones of the deceased.



By MONTE CRANE

With this brief statement, the Soviet weekly 64 announced the death of one of the greatest chess geniuses of all time. In a career that spanned four decades, Paul Keres attained the pinnacle of achievement in his chosen field. One need only remember that he won the Soviet chess crown three times, played on several Olympic teams and came second in three Candidates' tournaments to realize the tremendous talent of this remarkable man. And, yet, although he deserved the right to sit on the chess throne more than anyone else, he never obtained that right.

He was a very kind and friendly man. Never have I heard of him saying an unkind word about anyone, or of anyone saying an unkind word about him. He was a true gentleman in every meaning of the word (what a contrast to another much maligned and mis-aligned chess personality!).

But, Paul Keres' genius was most conspicuous in his games, of which we append an example:

KERES - E.D. BOGOLJUBOV Salzburg 1943

1 P-K4 P-QB4 2 N-K2 P-K3 3 P-Q4 PXP 4 NXP N-KB3 5 N-QB3
P-Q3 6 P-KN4! This aggressive move, which is called the Keres' attack, is currently one of the most popular retorts to the Scheveningen Variation. 6...N-B3 6...P-KR4 is met by 7 P-N5, 6...P-Q4 by 7 PXP NXP 8 B-N5+ B-Q2 9 NxN PxN 10 Q-K2+, and 6...P-K4 by 7 B-N5+ B-Q2 8 BxB+ QxB 9 N-B5 and if 9...P-KR4, then 10 B-N5! 7 P-N5 N-N7 Better is 7...N-Q2. 8 QxN N-Q2 9 B-K3 P-QR3 9...Q-N3
10 QxQ NxQ 11 N-N5 10 B-K2 Q-B2 11 P-B4 P-QN3 12 P-B5!
N-K4 13 PXP PXP 13...BXP 14 Q-R4+ B-Q2 15 N-Q5! 14
P-QR4 B-K2 15 P-R4 Q-B4 15...B-Q1 16 0-0-0; 15...R-QN1
16 R-KB1 16 Q-Q2 Q-B2 16...Q-N5 17 0-0! (17 R-QR3 N-B5!)
17...N-B5 18 Q-Q4 or 17...B-N2 18 R-QR3! 17 R-KB1 B-N2
18 B-Q4! R-KB1 19 0-0-0 RXR 20 RXR B-Q1 20...0-0-0?!
21 Q-K3 or 20...N-B5 21 Q-B4 0-0-0 22 Q-N4 wins 21
Q-B4 N-N3 22 Q-N4! Q-K2 23 Q-R5! P-K4 24 B-K3 B-B2 25
QXP N-B5 26 BxN BxB 27 B-R5+ K-Q2 28 B-N4+ K-B3 29
Q-B5 P-N4 30 Q-Q5+ K-N3 31 Q-Q4+ K-B3 32 N-Q5 1-0

Every great personality has numerous anecdotes about him or her which show something about their character. My favorite Keres story was told by Miro Radojic in 1970: "Very often I have seen the great chess gladiators become, in the hour of defeat, very small men suffering sleepless nights and complaining of their cruel destiny. I once heard that one of the greatest of Keres' generation, Rueben Fine, finally quit the ring because he couldn't bear to lose. I don't know whether Keres simply forced himself into this discipline or whether he is just one of those rare human beings with almost inhuman nerves, but I have never seen him excited even to the extent of omitting to keep score during time pressure with his beautiful handwriting. And never, of course, does one hear him complain about an undeserved loss. Never does he allow himself to forget his undeserved escapes.

"I shall never forget one episode from Zurich in 1953.. This was one of those candidates' tournaments in which he again finished second. I was reporting the event for my paper and almost every morning, together with Gligoric, his second Trifunovic, and Keres, I used to go to a beautiful tennis court on the outskirts of the city to enjoy an hour or two of 'white sport,' in which the estonian chess hero was also quite a master - in his younger days he was very high on the tennis ranking list of his country.

"This particular morning that I remember so well, I went to the courts more out of sheer habit than any conviction that I would find our Estonian partner there. The night before Keres had lost again to one of his direct rivals, but not only that; it was one of those losses that can really be called undeserved, more a caprice of bad luck than the result of his opponent's good play. What was more natural, I pondered than to feel disappointed and even frustrated, and after a bad night, to miss a tennis game in the early morning.

"To my surprise, he was already there when I arrived. I could not resist the temptation to ask him, even before saying 'good morning,' how he could think of tennis after the mis fortune of the night before. Instantly his face was covered with that half-smile that is so engaging. He answered my question very simply, as is the case when one is telling the pure truth, 'Ah, if that could be the only game I would lose in this tournament! It is true that I didn't deserve to lose last night, but the night before I didn't deserve to save a lost position with Najdorf. It all comes out the same in the end and the final score is always just.'" I have always felt that this was a beautiful philosophy of chess and life, 'the final score is always just.'

Do svidaniya, Paul Petrovich, the chess world will miss you!

RESULTS OF U.S. JUNIOR PHILADELPHIA

	<u>Score</u>
1st ... Larry Christiansen	6 - 1
2nd... Mark Diessen	5 - 2
3rd...Jonathan Tisdale	5 - 2
4th... Michael Rohde	4 ¹ / ₂ - 2 ¹ / ₂
5th ... David Berry	2 ¹ / ₂ - 4 ¹ / ₂
6th... Ronald Henley	2 ¹ / ₂ - 4 ¹ / ₂
7th... Kenneth Regan	2 - 5
8th... Peter Winston	1 ¹ / ₂ - 6 ¹ / ₂

FISH TANK continued...

earlier), those in most current use. Extended lines of play (for 20-25 moves) are given and some alternative lines are presented along the way. Strong specific recommendations often are given that even specialist books cover no more thoroughly (eg. fifth move alternatives for White in the Schliemann Defense to the Ruy Lopez). Weaving in and out of the lines of play is text giving both the immediate ideas and long range considerations.

How to Play the Chess Openings, Levy & Keene, Bobbs-Merrill Co., 1974. Hard-back. 224 pp. \$7.95.

Much less complete than the number of pages would suggest, this book is more elementary than Sokolsky's. Through the plentiful use of diagrams, dark and light print, step by step instruction and repetition, what is covered (12 openings with a three page reference to 20 others!) is made as easy to understand as possible. Very few illustrative games and lines of play for only the first 10-15 moves. And yet some fine points are discussed that may have been missed by even advanced players. Only a one page rather strange index listing strictly alphabetically (eg. classical system:Caro-Kann, classical system:French, classical variation:French, classical Var.:King's Indian, etc.).

ORANGE COUNTY'S CHESS BEST

1. Robert Snyder 2292
2. William Batchelder 2278
3. Robert Gauntt 2236
4. Richard Glass 2068
5. Mike Carlson 2053
6. Craig Fober 2053
7. William Stewart 2044
8. Gerald Schain 2041
9. Larry Snyder 2040
10. Scott Innes 2025
11. Ilan Brand 2003
12. Barry Manthe 1971
13. Joseph Murray 1957
14. Ben Schaeffer 1943
15. Michael Runyon 1941
16. Jerry Levin 1935
17. Rudolf Citron 1933
18. Ray Mendoza 1933
19. Robert Moore 1918
20. Mark Hoyt 1914
21. Vincent Mc Cambridge 1913
22. Kenneth Walters 1912
23. Gene Olson 1897
24. Greg Schweger 1895
25. Gary Cooper 1895
26. Bruce Weiner 1885
27. Horace Keesey 1880
28. Neil Bershad 1872
29. David Zechiel 1847
30. Joseph Vance 1847
31. Joel Friedman 1835
32. George Stearns 1834
33. Herb Faeth 1818
34. Raymond Bagley 1808
35. Robert Potts 1800
36. Dave Brimble 1794
37. Larry Schlueter 1792
38. Joel Hayashida 1789
39. David Glicksmen 1788
40. Boris Bylinkin 1779
41. Robert Engler 1743
42. Edward Hernandez 1718
43. Dale Price 1715
44. Charles Bell 1711
45. Steve Roelke 1680
46. Paul Mangrove 1663
47. Monte Crane 1650
48. Viqar Ahmed 1649
49. Richard Reid 1640
50. Mike Gilbert 1625
51. Calvin Olson 1613
52. Don Miele 1607
53. William Walls 1581
54. Robert Messenger 1579
55. James Dolce 1575
56. James Humphrey 1552
57. Alike Herring 1546
58. Gerald Kasinski 1532
59. Brian Edward 1521
60. Richard Hiatt 1502



NEWPORT BEACH CHESS CLUB meets Wednesdays from 7-11 p.m. at Horace Ensign Middle School, 2000 Cliff Dr. (at Irvine) in Newport Beach. For information call Tom Twaiten at 644-2928.

LA HABRA CHESS CLUB meets Wednesdays 7-10 p.m. at La Habra Recreation Center at the Civic Center, Euclid and La Habra.

FOUNTAIN VALLEY CHESS CLUB meets Tuesdays 7-10 p.m. at the Fred Maiola School on Finch Ave. (just S.W. of the corner of Brookhurst and Ellis). For information, phone Alan Worrell at 963-3697.

THE GARDEN GROVE CHESS CLUB meets Mondays and Fridays 7-10 p.m. at the Cook Elementary School, 9802 Woodbury Road, Garden Grove. For Information call Cal Olson at 827-7405.

WEEKEND RECREATION PLAY IN ORANGE - The Orange Chess Club has informal open play every Saturday and Sunday 11 a.m. to 4 p.m. - Also Tuesday 7-11 p.m. Hart Park ClubHouse, 701 S. Glassell in Orange.

ORANGE TOURNAMENT CHESS ASSOCIATES meets Tuesdays 7-11 p.m. at Trinity Episcopal Church, 2400 N. Canal (one block west of Orange Mall). For information call Gene Olson at 637-3742.

SAN CLEMENTE CHESS CLUB meets on Mondays 7-11 p.m. at San Clemente Community Center (Teen Center entrance on Cabrillo). For information, call Ed Tierney at 492-0822.

CERRITOS CHESS CLUB - call Robert Mercy Secretary (714) 839-4136 for information.

MISSION VIEJO - Call Harold Carter 586-8567.

CHESS COLLECTION CHESS CLUB - Daily informal play - weekly speed tourneys - monthly rated weekenders - cash. 415 S. Main St., Orange, Ca. 92668. Phone (714)997-9140

"There lies within us all a pawn to be promoted."

CALENDER OF EVENTS

Aug. 2-3 (Cal.)

\$3000 CALIFORNIA CLASSIC

5-SS, Quality Inn Airport, 5249 W. Century Blvd., Los Angeles 90045. In 2 sections: **Classic**, 40/2 (rds. 1-2 40/100), open to all. EF: \$26 if mailed by 7/26, \$30 at tmt. \$\$ 500-250-120. A 300-150-70, under 1800 300-150-70. Reg. ends 9 AM, rds. 10-3-8, 10:30-4:30. **Reserve**, 40/90, open to under 1600 or unrated. EF: \$25 if mailed by 7/26, \$30 at tmt. \$\$ 300-150-70, under 1400 200-100-50. Unr. 120-60-40; no Unr. may win over \$150. Reg. ends 11 AM, rds. 12-4:15-8:30, 10:30-3:30. **Both, Read CCA Information ad.** HR: 18-22. ENT: Continental Chess Assn., 450 Prospect Ave., Mt. Vernon, NY 10553. **NS.**

Aug. 2-3 (Cal.)

CHESS GROTTO AMATEUR #16

4-SS, 45/90, Chess Grotto, 2548 W. 7th, Los Angeles 90057. Open to under 2000. EF: \$10 if rec'd by 7/31, \$11 later. Prizes by points: 4 pts. pays \$60; 3½, \$40; 3, \$20. Reg. 8-9:30 AM, rds. 10-2, 9-1. ENT: address above.

Aug. 9-10 (Cal.)

RIVERSIDE OPEN

5-SS, 40/2, Adult Rec. Center, 2624 Fairmount Blvd., Riverside 92501. EF: \$12 if rec'd by 8/7, \$15 later. \$\$ 100 to 1st, Expert. A, B, C, D each 50-20, E, Unr. each 30. Reg. 8:30-9:30 AM, rds. 10-3-8, 10-4. ENT: Randall Hough, 3565-B Chicago Ave., Riverside, CA 92507.



THE CHESS COLLECTION CHESS CLUB NOW FORMING

Daily informal studio play - weekly & monthly tournaments. Send \$25 to:
The Chess Collection; 415 S. Main;
Orange, Ca. 92688; phone 997-9140.



THE CHESS COLLECTION
415 South Main Street
Orange, Calif. 92668