

# Wilshire Chess Society Newsletter

## OFFICERS

President & Editor-Michael Jeffreys  
(310) 473-6291  
MJeffrey@ix.netcom.com  
www.geocities.com/mjshark1  
Assistant T.D.- Elliot Landaw (310) 552-4538



Vol. 9-4: April 2003

## Support Your Chess Club or Lose it!

Chess players often complain about how chess doesn't get the respect (at least in this country) that it deserves, yet they fail to support the few chess programs that do exist. For example, my friend Danny Berman, who took over the L.A. Chess league, recently had to cancel this season for lack of participation. Indeed, not ONE single team contacted him to play!

And for the last 6 months, the number of players showing up to play in the Wilshire Chess Society Tournaments has been between 6-12. Yet at one time we were getting 20-24 players. What's going on? I've had players say to me that the club should meet more often. What!? If the club can't fill one tournament a month, what's the point of having more? Others have said, "Why don't you offer lectures?" Well, for the past 3 months, we've been fortunate enough to have SM Mick Bighamian lecturing before each tournament (at no charge to members!), yet this has not helped increase player turnout.

Some people feel that the internet is to blame for the overall downturn in tournament attendance across the country. Well, I too play on the internet, but it in no way can be compared to the fun and excitement of actually going to a tournament, sitting across from a real live opponent, punching a chess clock, and actually moving the pieces! (Not to mention going over the game with your opponent immediately following the game and discussing improvements. This is a great learning tool that simply doesn't happen when you play over the internet.)

So, what's the answer? In a word, get involved! For starters, mark down May 18 on your calendar. Call a chess buddy, and have him or her do the same thing. Know some people who have kids who play chess? Great, call and invite them to our next tournament. Next, show up May 18 at 10:25 am for the lecture and then play in the tournament. What's the alternative?

**Quote of the Month:** "Chess is 20% preparation, 30% talent, and 50% temperament." - George Botterill

Don't get involved, don't support your chess club, and sit back and watch it die. The choice is yours.

Contratulations to the winners of our March 23 tournament: Quad 1: **Damir Tonka**; Quad 2: **Michael Jeffreys**

**Note: Our April 20th Tournament has been canceled due to the Mall being closed on Easter Sunday.**

### 👉 Free Chess Lecture May. 18!

Our next tourn. is May 18, at 10:30 am in Community Room "A." We are pleased to announce that before the tmt. SM Mick Bighamian will be giving a lecture titled, "**Middle Game Pawn Structures**." The lecture is free to all WCS members (\$5.00 to SM Mick Bighamian nonmembers). Please get there by 10:25 am, as the lecture will start at 10:30 am sharp, and go to 11:15 am. The tmt. will start immediately following the lecture. **Bonus: Free set of lecture notes (approx. 15 pages!) to the first 5 to arrive.**

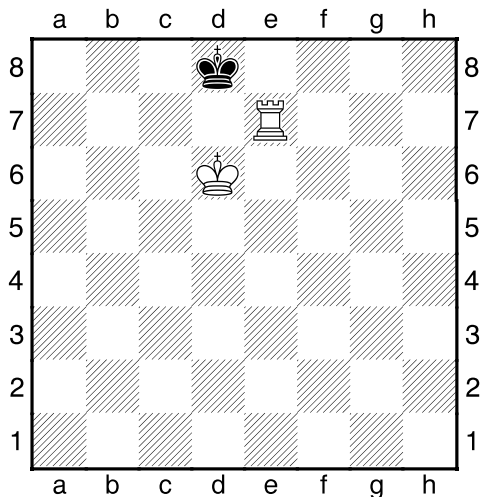


### Next W.C.S. G/45 Tournament May 18, 2003 - Sunday

Westside Pavilion, Community Room "A"  
10850 W. Pico Blvd., West Los Angeles  
(3rd Floor, east end of mall above  
Robinson's-May, behind food court.)  
Registration/lecture: 10:30 am  
Games from: 11:15 am - 4:45 pm, 3-rounds  
Round robin quads (groups of 4) by rating  
Time control: G/45 mins. Entry fee: \$20.00  
Prizes: \$50.00 per quad (35.00 1st, 15.00 2nd)  
WCS Membership required (\$15.00/year) as  
well as U.S.C.F. Membership (\$49.00/year).

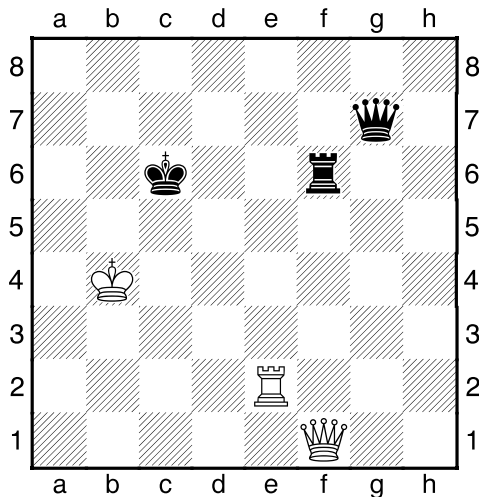
# 4 chess endgame problems to rattle your brain!

1



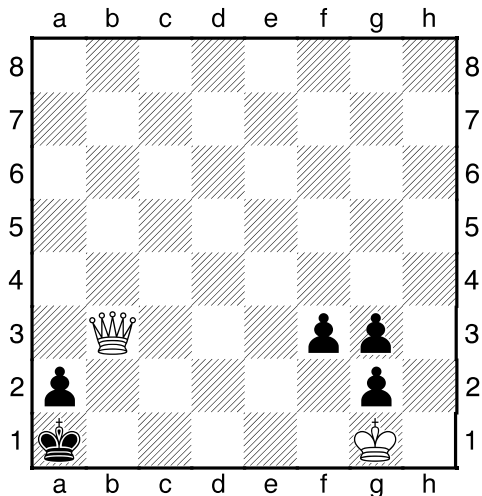
White to Move  
and mate in 3

2



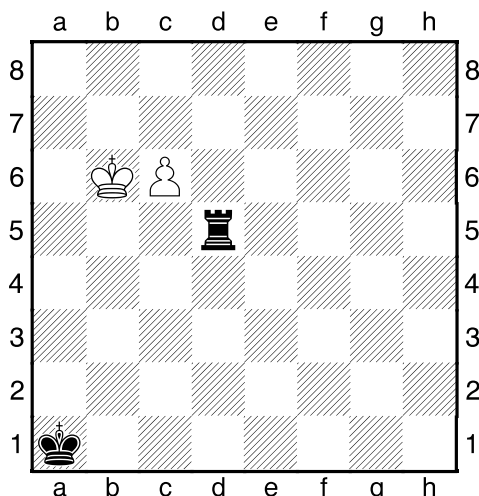
White to Move  
and win

3



White to Move  
and win

4



White to Move  
and win

## Solutions

1) 1.Re5 (or e4, e3, e2, e1!) 1... Kc8 2.Rb5 Kd8 3.Rb8#

2) 1.Re6+ Rxe6 2.Qa6+ Kd5 [ 2...Kd7 3.Qa7+; 2...Kc7 3.Qa7+] 3.Qc4+ Kd6 [ 3...Ke5 4.Qc3+] 4.Qc5+ Kd7 5.Qa7+ 1-0

3) 1.Qb6 f2+ 2.Kxg2 f1Q+ 3.Kxf1 g2+ 4.Ke2 g1Q 5.Qxg1+ Kb2 6.Kd2 a1Q 7.Qb6+ Ka3 [ 7...Ka2 8.Kc2] 8.Qa5+ Kb2 9.Qb4+ Ka2 10.Kc2 1-0

4) 1.c7 Rd6+ 2.Kb5 Rd5+ 3.Kb4 Rd4+ 4.Kb3 Rd3+ 5.Kc2 Rd4 6.c8=R! (Q=stalemate!) Ra4 7.Kb3 1-0 (Saavedra 1895)