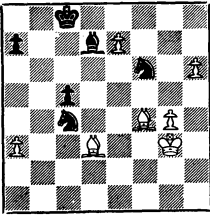


THE CALIFORNIA CHESS REPORTER



57... KtxRP?;
58. B-B5 (chess blindness; 58. B-R6 mate).

FROM: 244 Kearny Street, San Francisco 94108

TO:

David Lawson
111 Montague St.
Brooklyn 2, N. Y.

THE FOURTH ANNUAL REDWOOD EMPIRE OPEN

Saturday-Sunday, April 24-25, 1965

College of Marin cafeteria

Entry Fees: Over 1900.....\$12
Under 1900..... 10
C. O. M. Students..... 12*

* Includes USCF membership of \$5. All entry fees include a forfeit fee of \$2 which will be returned upon completion of the tournament.

Prizes: 1st.....\$120
2nd..... 80
3rd..... 50
Plus many class prizes

ROUNDS: I-Saturday 10 A. M. II-Saturday 3 P. M.
III-Saturday 7 P. M. (all @ 40 moves 1½ hrs)
IV-Sunday 10 A. M. V-Sunday 4 P. M.
(Sunday rounds @ 40 moves in 2 hours)

Registration: Saturday 9 A. M. or write Mike Goodall, 172 Blackstone Drive, San Rafael.

SAN BERNARDINO OPEN

May 1-2, 1965, at the City Cultural Center, 11th & E sts.

Entry Fees: Adults.....\$10.50
Under 18..... 7.50

Prizes: 1st.....\$150
2nd..... 75
Third prize and class prizes in addition

ROUNDS: I-10:30A. M. II-3 P. M. III-7 P. M.
(45 moves in 1½ hours)
IV-8 A. M. V-1:30 P. M. VI-7 P. M.
(50 moves in 2 hours)

Tournament Director: Gordon S. Barrett Registration closes 10 A. M. or write Stephen J. Skrypzak, 1553 Lassen Street, Redlands.

THE CALIFORNIA CHESS REPORTER

Vol. XIV, No. 4

\$2 per year

December, 1964

THE CALIFORNIA CHESS REPORTER, 244 Kearny Street, San Francisco 8
Monthly except January, March, August, and October
Official Organ of the California State Chess Federation

Editor: Guthrie McClain

Associate Editors: Gordon S. Barrett, Los Angeles; Dr. Mark W. Eudey, Berkeley;
Neil T. Austin, Sacramento; Irving Rivise, Los Angeles

Games Editor: Robert E. Burger

Guest Annotator: Intl. Master Imre Konig

Second-class postage paid at San Francisco, California

CONTENTS

State Championship	50	Bay Area Industrial League . .	55-57
Southern Calif. Championship .	51	Game of the Month	57-58
Central Calif. Open Chp.	52-53	Games	58-63
Northern Calif. Chp.	54-55	Tasks	64

ZOLTAN KOVACS, NORRIS WEAVER STATE CO-CHAMPIONS

Zoltan Kovacs of Los Angeles and Norris Weaver of Berkeley tied for first place in the 1964 California State Championship and will share the title jointly, as is the established practice. The tournament was held in San Francisco over the Thanksgiving Day week end.

The ten finalists were the eight survivors of large qualifying tournaments plus the 1964 Open Champion and one player from last year's championship (Ray Martin, because Bill Addison was in Israel playing for the U. S. team in the Chess Olympics). The championship was a hot contest, as the co-winners scored 6-3, only half a point ahead of two players with $5\frac{1}{2}$ - $3\frac{1}{2}$ scores. There also were two players with 5-4 scores.

KOVACS, WEAVER CO-CHAMPIONS FOR 1964

The 1964 California Championship was a tournament of missed opportunities. Zoltan Kovacs, former State Champion, and Norris Weaver, former Minnesota champion, tied for first place with 6-3 scores, half a point ahead of Walt Cunningham and Ray Martin. Kovacs tied for first in spite of losing to the next three players. Weaver tied for first in spite of losing to State Junior Champion John Blackstone, Jerry Hanken, and drawing two games. Cunningham lost three games and drew one; Martin lost two games and drew three.

The biggest lost opportunity was in the game Spiller-Blackstone, where Spiller sacrificed a piece for some pawns (he also did this against Kovacs--see the Games Section--but lost when his pawn-roller stalled) and missed a mate-in-one on the move before the time control. But this game was drawn, and the difference would not have helped Spiller into first place. In the game Hanken-Weaver, Black resigned on Move 27, evidently thinking he had to lose a piece. The piece could have been saved; although Black's game was still poor, he had a fighting chance to get a draw. This was in the last round and Weaver only needed a draw to win the championship outright.

CALIFORNIA STATE CHAMPIONSHIP, SAN FRANCISCO 1964

	1	2	3	4	5	6	7	8	9	10	Score
1. Z. Kovacs	X	0	0	0	1	1	1	1	1	1	6-3
2. N. Weaver	1	X	1	$\frac{1}{2}$	0	1	1	1	$\frac{1}{2}$	0	6-3
3. W. Cunningham	1	0	X	0	1	0	$\frac{1}{2}$	1	1	1	$5\frac{1}{2}$ - $3\frac{1}{2}$
4. R. Martin	1	$\frac{1}{2}$	1	X	$\frac{1}{2}$	0	1	$\frac{1}{2}$	0	1	$5\frac{1}{2}$ - $3\frac{1}{2}$
5. J. Blackstone	0	1	0	$\frac{1}{2}$	X	$\frac{1}{2}$	$\frac{1}{2}$	$\frac{1}{2}$	1	1	5-4
6. A. Spiller	0	0	1	1	$\frac{1}{2}$	X	$\frac{1}{2}$	1	0	1	5-4
7. C. M. Capps	0	0	$\frac{1}{2}$	0	$\frac{1}{2}$	$\frac{1}{2}$	X	1	1	1	$4\frac{1}{2}$ - $4\frac{1}{2}$
8. E. Kennedy	0	0	0	$\frac{1}{2}$	$\frac{1}{2}$	0	0	X	1	1	3-6
9. N. Wood	0	$\frac{1}{2}$	0	1	0	1	0	0	X	0	$2\frac{1}{2}$ - $6\frac{1}{2}$
10. J. Hanken	0	1	0	0	0	0	0	0	1	X	2-7

The ten finalists of the State Championship included two seeded players from the 1963 State Championship and the 1964 California Open and eight winners of places in qualifying tournaments. Jerry Hanken won the Open, and Ray Martin came from the Championship owing to the absence of Bill Addison, who was playing in the Chess Olympics in Israel. A rundown on the qualifying tournaments follows:

Norman Wood of Santa Rosa won the first qualifying spot in the San Francisco City Championship, reported in our September issue.

Walt Cunningham, Stephen Matzner, Zoltan Kovacs and Arthur Spiller qualified in the Tournament of Champions, held at the Herman Steiner Club during September and October, and Ed Kennedy moved into the finals when Matzner and Bob Jacobs could not continue.

The Tournament of Champions was a triumph of youth over experience as Walt Cunningham and Steve Matzner, not long ago junior champions, beat out Zoltan Kovacs, Arthur Spiller, Bob Jacobs, et al., in convincing style. It was a fine win for Cunningham over a strong field. He lost only one game (Spiller) and drew one game (Kovacs). Matzner lost to Cunningham and drew two (Bob Currie and Irving Rivise).

TOURNAMENT OF CHAMPIONS-SOUTHERN CALIFORNIA CHAMPIONSHIP 1964

	1	2	3	4	5	6	7	8	Score
1. W. Cunningham	W18	W7	W2	W5	D3	L4	W9	W10	6½-1½
2. S. Matzner	W19	D10	L1	D13	W17	W6	W11	W4	6-2
3. Z. Kovacs	W17	D13	D4	W11	D1	D9	W10	D5	5½-2½
4. A. Spiller	W20	D9	D3	W17	W6	W1	D5	L2	5½-2½
5. R. Jacobs	D6	W11	W14	L1	D13	W8	D4	D3	5-3
6. E. Kennedy	D5	W18	D10	W9	L4	L2	W17	W11	5-3
7. J. Earnest	W8	L1	L11	L15	W19	W18	W16	D9	4½-3½
8. J. Loftsson	L7	W19	L12	W16	W14	L5	D13	W15	4½-3½
9. R. Martin	W12	D4	W13	L6	W10	D3	L1	D7	4½-3½
10. R. Currie	W14	D2	D6	W12	L9	W15	L3	L1	4-4
11. L. Kupersmith	W15	L5	W7	L3	W12	W13	L2	L6	4-4
12. W. Maillard	L9	W16	W8	L10	L11	L14	W18	W17	4-4
13. I. Rivise	W16	D3	L9	D2	D5	L11	D8	W14	4-4
14. S. Parker	L10	W20	L5	W19	L8	W12	D15	L13	3½-4½
15. S. Rains	L11	L17	W18	W7	W20	L10	D14	L8	3½-4½
16. Y. Oganosov	L13	L12	D17	L8	D18	Wbye	L7	W19*	3-5
17. G. Barrett	L3	W15	D16	L4	L2	W19	L6	L12	2½-5½
18. N. Hultgren	L1	L6	L15	W20	D16	L7	L12	Wbye	2½-5½
19. H. Rogosin	L2	L8	W20	L14	L7	L17	Wbye	L16*	2-6
20. R. Pease	L4	L14	L19	L18	L15	--	--	--	0-8

* Forfeit

The qualifying tournament for the Central California Chess League was held in San Jose on October 16-18. Under the energetic leadership of Lt-Col. Ed Edmondson, President of the United States Chess Federation, a total of 76 players competed for the one place in the finals. Norris Weaver of Berkeley, former Minnesota state champion, nosed out Charles Henin of Sherman Oaks on tie-breaking points, both players having 5-0 scores. Koit Tullus of San Jose was third, 4½-½. Serge von Oettingen won the Senior A-1 and David Blaker and John Blackstone tied for the Junior Award.

CENTRAL CALIF. OPEN AND QUALIFYING TOURNAMENT, SAN JOSE 1964

	1	2	3	4	5	Score
1. N. Weaver	W11	W18	W42	W6	W8	5 - 0
2. C. Henin	W51	W48	W10	W10	W4	5 - 0
3. K. Tullus	W23	W14	D17	W13	W28	4½ - ½
4. J. Mortz	W45	W47	W7	W19	L2	4 - 1
5. P. Smith	W25	D35	W60	D17	W20	4 - 1
6. A. Troy	W57	W43	W20	L1	W18	4 - 1
7. S. von Oettingen	W49	W37	L4	W43	W21	4 - 1
8. D. Foley	W72	W62	W44	W9	L1	4 - 1
9. E. Syrett	W74	W65	W15	L8	W19	4 - 1
10. J. Fliegel	W66	W50	L2	W46	W24	4 - 1
11. R. Chako	L1	W67	W66	W44	W17	4 - 1
12. D. Blohm	W27	W46	W28	L2	D16	3½ - 1½
13. G. Stearns	W53	L15	W52	L3	W37	3½ - 1½
14. W. Adams	W39	L3	D61	W41	W35	3½ - 1½
15. J. Blackstone	W61	D13	L9	W60	W38	3½ - 1½
16. I. Pohl	D36	D68	W45	W26	D12	3½ - 1½
17. P. Leuthold	W71	W55	D3	D5	L11	3 - 2
18. G. Teslawski	W67	L1	W36	W25	L6	3 - 2
19. E. Osbun	W58	W21	W35	L4	L9	3 - 2
20. N. Wood	W69	W70	L6	W23	L5	3 - 2
21. S. Rubin	W31	L19	W41	W50	L7	3 - 2
22. C. Riley	L26	W27	W40	L24	W51	3 - 2
23. E. McCaskey	L3	W39	W47	L20	W50	3 - 2
24. R. Wilson	L35	W57	W54	W22	L10	3 - 2
25. L. Post	L5	W53	W48	L18	W52	3 - 2
26. C. Joyce	W22	L44	W55	L16	W48	3 - 2
27. W. Chong	L12	L22	W49	W70	W43	3 - 2
28. K. Jones	W76	W63	L12	W51	L3	3 - 2
29. R. Oylar	D38	L60	W63	W36	D30	3 - 2
30. H. Edelstein	L43	W74	W65	D31	D29	3 - 2
31. B. Jachens	L21	D49	W56	D30	W47	3 - 2
32. D. Tankersley	L37	L69	W67	W71	W46	3 - 2
33. E. Mueller	L62	L45	W72	W65	W44	3 - 2
34. K. M. Goodall	L65	L66	W73	W68	W54	3 - 2
35. A. DiMilo	W24	D5	L19	W62	L14	2½ - 2½
36. L. Taylor	D16	W38	L18	L29	W60	2½ - 2½
37. J. Fredgren	W32	L7	D62	W61	L13	2½ - 2½
38. F. Olvera	D29	L36	W64	W42	L15	2½ - 2½

Cent. Calif. Open	1	2	3	4	5	Score
39. G. Olsson	L14	L23	W57	W58	D56	2½-2½
40. P. Vayssie	D41	L42	L22	W53	W63	2½-2½
41. D. Saccuzzo	D40	W76	L21	L14	W62	2½-2½
42. G. Oakes	D68	W40	L1	L38	W61	2½-2½
43. H. Rosenbaum	W30	L6	W69	L7	L27	2 - 3
44. M. Bedford	W64	W26	L8	L11	L33	2 - 3
45. O. Nichols	L4	W33	L16	L48	W73	2 - 3
46. Dr. B. Gross	W56	L12	W71	L10	L32	2 - 3
47. D. Betanco	W54	L4	L23	W55	L31	2 - 3
48. H. Estrada	W75	L2	L25	W45	L26	2 - 3
49. M. Mattingly	L7	D31	L27	D59	W71	2 - 3
50. P. Hubbard	W59	L10	W70	L21	L23	2 - 3
51. D. Pelletier	L2	W73	W68	L28	L22	2 - 3
52. J. Barlow	L70	W59	L13	W69	L25	2 - 3
53. P. Lamasney	L13	L25	W74	L40	W65	2 - 3
54. C. Singleton	L47	W72	L24	W66	L34	2 - 3
55. F. Weinberg	W73	L17	L26	L47	W67	2 - 3
56. J. Dwyer	L46	D64	L31	W75	D39	2 - 3
57. G. Garcia	L6	L24	L39	W76	W66	2 - 3
58. M. Sanders	L19	L71	W76	L39	W69	2 - 3
59. L. Reuther	L50	L52	D75	D49	W68	2 - 3
60. J. Stein	D63	W29	L5	L15	L36	1½-3½
61. L. Marjay	L15	W75	D14	L37	L42	1½-3½
62. M. Gazse	W33	L8	D37	L35	L41	1½-3½
63. H. Fernandez	D60	L28	L29	W64	L40	1½-3½
64. A. Knack	L44	D56	L38	L63	W70	1½-3½
65. J. Cornwell	W34	L9	L30	L33	L53	1 - 4
66. H. Duncanson	L10	W34	L11	L54	L57	1 - 4
67. A. Schulz	L18	L11	L32	W74	L55	1 - 4
68. H. Kennedy	D42	D16	L51	L34	L59	1 - 4
69. C. Daly	L20	W32	L43	L52	L58	1 - 4
70. L. Cann	W52	L20	L50	L27	L64	1 - 4
71. J. Bush	L17	W58	L46	L32	L49	1 - 4
72. P. Brown	L8	L54	L33	L73	W75	1 - 4
73. M. Rivera	L55	L51	L34	W72	L45	1 - 4
74. H. Woest	L9	L30	L53	L67	W76	1 - 4
75. R. Foley	L48	L61	D59	L56	L72	½-4½
76. J. Weiler	L28	L41	L58	L57	L74	0 - 5

The second Northern California qualifying tournament was held at the Mechanics' Institute September 26-27 and again there was a tie for first. John Blackstone and Alan Bourke topped the 24-man field with $4\frac{1}{2}-1\frac{1}{2}$ scores, with Blackstone winning the place in the finals by one tie-breaking point. Norris Weaver and Carroll Capps tied for third, $3\frac{1}{2}-1\frac{1}{2}$. The tournament director was Karl Bopp.

NORTHERN CALIF. CHAMPIONSHIP AND QUALIFYING TOURNAMENT, 1964

	1	2	3	4	5	Score
1. J. Blackstone	W15	W8	D2	W11	W5	$4\frac{1}{2}-1\frac{1}{2}$
2. A. Bourke	W21	W12	D1	W7	W6	$4\frac{1}{2}-1\frac{1}{2}$
3. N. Weaver	D13	D19	D18	W14	W11	$3\frac{1}{2}-1\frac{1}{2}$
4. C. Capps	W17	L6	W22	D5	W13	$3\frac{1}{2}-1\frac{1}{2}$
5. E. Osbun	W14	D10	W6	D4	L1	3 - 2
6. R. Laver	W24	W4	L5	W8	L2	3 - 2
7. F. Thornally	D9	W22	W10	L2	D12	3 - 2
8. J. Mortz	W20	L1	W15	L6	W17	3 - 2
9. M. Goodall	D7	W16	L11	W23	D10	3 - 2
10. D. Sutherland	W16	D5	L7	D12	D9	$2\frac{1}{2}-2\frac{1}{2}$
11. I. Pöhl	D19	W13	W9	L1	L3	$2\frac{1}{2}-2\frac{1}{2}$
12. V. Radaikin	W23	L2	D17	D10	D7	$2\frac{1}{2}-2\frac{1}{2}$
13. K. Grivainis	D3	L11	W20	W19*	L4	$2\frac{1}{2}-2\frac{1}{2}$
14. R. Henry	L5	W24	D19	L3	W18	$2\frac{1}{2}-2\frac{1}{2}$
15. Dr. J.K. Walters	L1	D20	L8	W22	W21	$2\frac{1}{2}-2\frac{1}{2}$
16. A. McKenzie	L10	L9	D21	W20	W23	$2\frac{1}{2}-2\frac{1}{2}$
17. H. Rosenbaum	L4	W21	D12	D18	L8	2 - 3
18. M. Wilkerson	L22*	W23	D3	D17	L14	2 - 3
19. M. Burkett	D11	D3	D14	L13*	L24*	$1\frac{1}{2}-3\frac{1}{2}$
20. G. Meacham	L8	D15	L13	L16	W22	$1\frac{1}{2}-3\frac{1}{2}$
21. N. Walters	L2	L17	D16	W24*	L15	$1\frac{1}{2}-3\frac{1}{2}$
22. D. Bennett	W18*	L7	L4	L15	L20	1 - 4
23. Dr. B. Gross	L12	L18	W24	L9	L16	1 - 4
24. L. O'Doan	L6	L14	L23	L21*	L19*	0 - 5

Carroll M. Capps won a clear victory in the third Northern California qualifying tournament, held at the Mechanics' Institute November 7-8 and directed by Karl Bopp. Capps scored $4\frac{1}{2}-1\frac{1}{2}$ to lead seven players who were tied for second place, a full point behind.

S. F. BAY AREA CHAMPIONSHIP AND QUALIFYING TOURNAMENT, 1964

	1	2	3	4	5	Score
1. C. Capps	W25	W13	D2	W5	W3	$4\frac{1}{2}-1\frac{1}{2}$
2. R. Hooppe	W15	W6	D1	D4	D9	$3\frac{1}{2}-1\frac{1}{2}$

THE CALIFORNIA CHESS REPORTER

3rd No. Calif.	1	2	3	4	5	Score
3. W. Batchelder	W19	W10	D4	W9	L1	3½-1½
4. D. Sutherland	W21	W11	D3	D2	D6	3½-1½
5. E. Osbun	W26	D8	W7	L1	W12	3½-1½
6. J. Fliegel	W18	L2	W16	W19	D4	3½-1½
7. D. Conwit	W16	D9	L5	W20	W11	3½-1½
8. D. Blohm	W17	D5	L9	W22	W13	3½-1½
9. N. Weaver	W14	D7	W8	L3	D2	3 - 2
10. F. Thornally	W22	L3	W17	L11	W19	3 - 2
11. K. Tullus	W24	L4	D12	W10	L7	2½-2½
12. V. Radaikin	W20	D14	D11	D13	L5	2½-2½
13. R. Laver	W23	L1	W18	D12	L8	2½-2½
14. E. Syrett	L9	D12	L22	W17	W20	2½-2½
15. K. Zangerle	L2	L17	W21	W18	D16	2½-2½
16. G. Stearns	L7	W26	L6	W23	D15	2½-2½
17. R. Hammie	L8	W15	L10	L14	Bye	2 - 3
18. R. Slotnick	L6	W25	L13	L15	W22	2 - 3
19. J. Smail	L3	W21	W23	L6	L10	2 - 3
20. P. Vayssie	L12	D22	W26	L7	L14	1½-3½
21. G. Meacham	L4	L19	L15	Bye	D23	1½-3½
22. L. Taylor	L10	D20	W14	L8	L18	1½-3½
23. J. Teitelbaum	L13	Bye	L19	L16	D21	1½-3½
24. M. Wilkerson	L11		Withdrew			
25. M. Goodall	L1	L18	Withdrew			
26. K. Bendit	L5	L16	L20	Withdrew		

BAY AREA INDUSTRIAL LEAGUE 1964-65

ROUND 1

Bank of America	Bank of America	PG&E Bishops	PG&E Knights
Pawn Snatchers	Rooks		
J. Ambrosio 0	D. Saccuzzo	1 H. Bullwinkel	1 F. Norton 0
P. Duvair 0	P. Bryne	1 J. Pawlow	0 S. Kohl 1
L. Nork 0	H. Thomas	1 V. Bedjanian	0 J. Zvirbulis 1
P. Plansky 0	H. Pollak	1 A. Nikitin	1 K. Scholz 0
J. Gutierrez 0	J. Puechner	1 D. Lee	1 K. Vogel 0
T. Rutledge 0	P. Pattison	1 R. Grediakin	0 M. Castaneda 1

Bay Area Industrial League (continued)

ROUND 1 (continued)

Division of Hwys.	UCRL 184 Chess	Club
G. Espinoza	0	A. Wang 1
P. Nash	0	M. Zirin 1
S. Young	0	G. Farly 1
H. Lotter	0	W. Swiatecki 1
H. Cole	0	B. Kortegaard 1
R. Enos	1	R. Zane 0

ROUND 2 (continued)

PG&E Knights	Div. of Hwy.	R. K.
F. Norton	0	P. Nash 1
S. Kohl	0	S. Young 1
J. Zvirbulis	1	G. Espinoza 0
K. Scholz	1	R. Burton 0
K. Vogel	1	J. Lew 0
M. Castaneda	0	D. Enos 1

San Quentin Calif. Research

D. Hallinan	0	J. K. Walters 1
R. Booth	1	W. P. Webb 0
H. Kor	1	L. C. Chill 0
P. Tesic	1	L. Brown 0
J. Ransen	0	R. G. Anderson 1
B. Chamberlain	$\frac{1}{2}$	G. S. Donaldson $\frac{1}{2}$

Shell Develop. Livermore LRL

B. Bright	1	C. Sink 0
M. Wald	1	M. Tomlinson 0
G. Hartwig	$\frac{1}{2}$	D. Hockensmith $\frac{1}{2}$
D. Geymer	0	J. Paulsen 1
G. Chakeris	0	D. Halda 1
B. Nielsen	1	C. Frizzel 0

ROUND 2Shell Development Calif. Research

M. Wald	0	J. K. Walters 1
B. Bright	0	W. P. Webb 1
G. Hartwig	0	L. C. Chill 1
D. Geymer	1	R. Bacskai 0
G. Chakeris	1	L. Brown 0
B. Nielsen	0	R. G. Anderson 1

UCRL 184 CClub San Quentin

M. Zirin	0	R. Taylor 1
W. Swiatecki	1	D. Hallinan 0
D. Lebeck	0	R. Booth 1
B. Kortegaard	0	H. Kor 1
D. Chew	0	P. Tesic 1
R. Soren	0	J. Ransen 1

BofA Pawn Snatch. PG&E Bishops

J. Ambrioso	0	H. Bullwinkel 1
L. Schaver	0	L. Solbeau 1
P. Duvair	0	V. Bedjanian 1
J. Gutierrez	0	E. Salo 1
T. Rutledge	0	A. Nikitin 1
F. Curran	0	K. Johnson 1

Kaiser Inds. B of A Rooks

H. Morison	0	D. Saccuzzo 1
J. Carter	0	H. Thomas 1
W. Freedle	0	H. Pollak 1
G. Bedrosian	0	J. Puechner 1
V. Cabrera	0	J. Ramos 1
Forfeit	0	P. Pattison 1

ROUND 3San Quentin PG&E Knights

D. Hallinan	1	F. Norton 0
R. Booth	1	S. Kohl 0
H. Kor	1	J. Zvirbulis 0
P. Tesic	1	K. Scholz 0
A. Walker	1	K. Vogel 0
J. Ransen	1	M. Castaneda 0

PG&E Bishops Kaiser Industries

H. Bullwinkel	1	H. Morison 0
L. Solbeau	1	J. Carter 0
V. Bedjanian	1	W. Freedle 0
A. Nikitin	1	G. Bedrosian 0
D. Lee	1	H. Dieterle 0
E. Salo	1	B. Treister 0

ROUND 3 (Continued)

<u>Shell Development</u>	<u>UCRL 184 ChessClub</u>	<u>Livermore</u>	<u>Calif. Research</u>
M. Wald	0 A. Wang	1 G. Boer	$\frac{1}{2}$ J. K. Walters
B. Bright	0 G. Farly	1 D. Hockensmith	$\frac{1}{2}$ W.P. Webb
G. Hartwig	1 M. Zirin	0 B. Hampton	0 L. C. Chill
D. Geymer	0 W. Swiatecki	1 M. Tomlinson	0 R. Bacskai
G. Chakeris	0 B. Kortegaard	1 C. Sink	1 R. G. Anderson
B. Nielsen	0 D. Chew	1 J. Paulsen	1 G. Donaldson

Division of Hwys. Road Knights vs. Bankamerica Pawn Snatchers

Results unavailable

GAME OF THE MONTH

The co-holders of the State Championship met before the tournament had any clear-cut leaders. The result was a hard-fought positional struggle in which Weaver patiently built up control of the board. But it still took some careful combining to break the position open.

CALIFORNIA STATE CHAMPIONSHIP, 1964Game No. 823 King's Indian

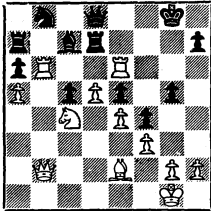
White	Black
N. Weaver	Z. Kovacs

1.	P-Q4	Kt-KB3
2.	P-QB4	P-KKt3
3.	Kt-QB3	B-Kt2
4.	P-K4	P-Q3
5.	P-B3	0-0
6.	B-K3	Kt-B3
7.	KKt-K2	P-QR3
8.	Q-Q2	R-Kt1
9.	Kt-B1	P-K4
10.	P-Q5	Kt-K2
11.	P-B5	Kt-K1
12.	P-QKt4	P-B4
13.	P-QR4	Kt-KB3
14.	B-K2	K-R1
15.	Kt-Kt3	R-B2
16.	P-Kt5	Kt(2)-Kt1

17.	PxRP	PxRP
18.	Kt-R5	R-R1
19.	Kt-B6	Q-K1
20.	PxQP	PxQP
21.	0-0	B-Kt2
22.	QR-Kt1	B-KB1
23.	R-Kt6	B-B1
24.	KR-Kt1	Kt-Q2
25.	QR-Kt2	Kt1-B3
26.	Kt-R7	P-B5
27.	B-B2	P-Kt4
28.	P-R5	Kt-B4
29.	BxKt	PxB
30.	KtxB	QxKt
31.	R-Kt6	Kt-Q2
32.	R-QB6	Q-Q1
33.	Kt-R4	Kt-Kt1
34.	R-K6	B-Q3
35.	Kt-Kt6	R-R2
36.	Kt-B4	KR-Q2

37. Kt-B4 ...
 Not falling for 37. KtxB, RxKt. 38.
 RxP, Kt-B3! 39. R-B5, Kt-Q5.

37. ... B-B2
 38. Q-Kt2 K-Kt1



39. P-Q6! BxR
 40. PxB QR-Kt2
 41. QxP K-B2
 42. R-R6 K-Kt1
 43. Kt-R5 R-B2
 44. KtxR QxKtP
 45. KtxP Kt-Q2
 46. QxP ch K-B1
 47. R-R5 P-R3
 48. QxP ch Resigns.

4. Kt-QB3 P-KKt3
 5. P-K4 B-Kt2
 6. B-Q3 0-0
 7. Kt-B3 P-K4
 8. 0-0 QKt-Q2
 9. B-Kt5 P-KR3
 10. B-Q2 Kt-R4
 11. Q-B1 K-R2
 12. K-R1 P-QR3
 13. QR-Kt1 P-QKt4
 14. PxP Kt-Kt3
 15. P-QKt3 P-B4
 16. P-QR4 PxKtP
 17. KtxKtP P-QB5
 18. BxBP PxP
 19. Kt-K1 B-Kt5
 20. P-R5 KtxB
 21. QxKt R-B1
 22. Q-R4 B-K7
 23. R-Kt1 RxP
 24. B-K3 ...

GAMES

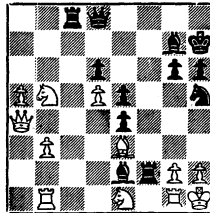
Game No. 824 Benoni

A neatly played game culminating in a fine combination.

White Black
 A. Spiller N. Weaver

1. P-Q4 Kt-KB3
 2. P-QB4 P-QB4
 3. P-Q5 P-Q3

24. ... Kt-Kt6 ch
 25. PxKt KR-B4
 26. Kt-B3 PxKt
 27. KR-KB1 PxP ch
 28. KxP BxR ch
 29. RxB R-QB7 ch
 30. K-Kt1 RxR ch
 31. KxR Q-B3 ch



Game No. 825 Robatch
 White Black
 J. Blackstone J. Hanken
 Forceful sacrificial play.

- | | | |
|-----|----------|----------------------|
| 1. | P-K4 | P-KKt3 |
| 2. | P-Q4 | B-Kt2 |
| 3. | Kt-QB3 | P-Q3 |
| 4. | Kt-B3 | Kt-KB3 |
| 5. | B-Q3 | 0-0 |
| 6. | B-KKt5 | P-KR3 |
| 7. | B-KB4 | P-B4 |
| 8. | PxP | PxP |
| 9. | Q-Q2 | K-R2 |
| 10. | P-K5 | Kt-Kt1 |
| 11. | P-KR4 | B-B4 |
| 12. | Kt-Kt5ch | K-R1 |
| 13. | P-R5 | BxB |
| 14. | PxB | PxP |
| 15. | RxP | Kt-QB3 |
| 16. | P-K6 | PxP |
| 17. | KtxP | Q-K1 |
| 18. | KtxB | KxKt |
| 19. | BxP ch | K-R2 |
| 20. | R-R3 | ... |
| 20. | Q-Kt5 | at once forces mate. |
| 20. | ... | R-B4 |
| 21. | 0-0-0 | R-R4 |
| 22. | QR-R1 | RxR |
| 23. | RxR | Kt-Q5 |
| 24. | Q-Kt5 | Resigns. |

Game No. 826 Center Game
 A marathon well worth studying.

 White Black
 J. Blackstone W. Cunningham

- | | | |
|----|------|--------|
| 1. | P-K4 | P-Q4 |
| 2. | PxP | Kt-KB3 |

- | | | |
|-----|----------|--------|
| 3. | B-Kt5 ch | B-Q2 |
| 4. | B-B4 | P-QKt4 |
| 5. | B-Kt3 | B-Kt5 |
| 6. | P-KB3 | B-B1 |
| 7. | Kt-B3 | P-Kt5 |
| 8. | Kt-K4 | KtxP |
| 9. | P-Q4 | P-K3 |
| 10. | Kt-K2 | B-K2 |
| 11. | 0-0 | 0-0 |
| 12. | P-QB4 | PxP ep |
| 13. | PxP | Kt-Q2 |
| 14. | P-QB4 | KKt-B3 |
| 15. | B-Kt2 | P-K4! |
| 16. | PxP | KtxKt |
| 17. | PxKt | Kt-B4 |
| 18. | Kt-Kt3 | QxQ |
| 19. | BxQ | Kt-Q6 |
| 20. | B-Q4 | R-Q1 |
| 21. | B-K3 | KtxKP |
| 22. | Kt-B5 | B-B1 |
| 23. | B-B4 | R-K1 |
| 24. | KB-Kt3 | Kt-Q6 |
| 25. | B-Kt3 | P-Kt3 |
| 26. | QR-Q1 | PxKt |
| 27. | RxKt | PxP |
| 28. | R-Q5 | P-KR3 |
| 29. | BxP | P-K6 |
| 30. | B-R5 | B-K3 |
| 31. | R-K5 | QR-B1 |
| 32. | R-K1 | B-QB4 |
| 33. | RxP | BxR ch |

If 33. . . . , B-Q2, 34. RxB.

- | | | |
|-----|------|------|
| 34. | RxB | B-B4 |
| 35. | B-Q2 | RxR |
| 36. | BxR | B-K3 |
| 37. | BxP | BxP |
| 38. | B-K3 | BxB |

Time trouble. 39. . . . , R-B6 wins the pawn at once.

- | | | |
|-----|-----|-------|
| 39. | PxB | K-R2? |
|-----|-----|-------|

40. P-QKt4	R-B6	73. B-R6	R-Q3
41. K-B2	R-Kt6	74. B-Kt5	K-B6
42. B-B5	K-Kt3	75. K-B3	K-K7
43. B-B8	P-R4	76. B-K7	R-Q3 ch
44. B-K7	K-B4	77. K-B4	K-K6
45. B-B5	K-K5	78. B-B6	K-K4
46. K-K2	P-B4	79. B-Kt5	R-B6
47. K-B2	P-B5	80. K-B5	R-B6 ch
48. B-K7	R-Kt7 ch	81. K-Q6	R-B7
49. K-Kt1	R-K7	82. B-K7	R-Q2 ch
50. B-Q8	P-B6	83. K-B5	R-Q4 ch
51. PxP ch	KxP	84. K-B6	K-K4
52. P-R4	R-Kt7 ch	85. B-B5	K-K3
53. K-R1	R-Kt7	86. K-Kt5	...
54. K-Kt1	...		
If B-K7, K-Kt6.	55. B-Q6 ch, KxP.	The losing move. But if the Bishop moves, the Rook attacks it and threatens to check the King back one row further -- after which the Black King is too far from KB1.	
54. ...	RxP	86. ...	K-B4
55. K-R2	K-Kt5	87. K-B4	RxB ch
56. K-Kt2	R-Kt7 ch	88. KxR and resigns.	
57. K-B1	K-B6		
58. K-K1	R-K7 ch		
59. K-Q1	R-K3		
60. B-Kt5	K-B7		

A skilful ending. The White King must desert his corner because of the possibility of double threats of mate on the back rank and attack on the Bishop.

Game No. 827 King's Pawn

White caps his sharp play with a well-timed combination.

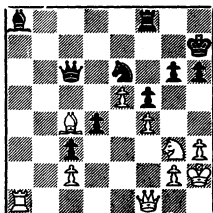
		White	Black
		C. Capps	E. Kennedy
61. K-Q2	R-Q6 ch		
62. K-B3	K-B6		
63. B-K7	R-Q2		
64. B-Kt5	K-K5	1. P-K4	P-K4
65. B-R6	R-Q3 ch	2. B-B4	Kt-KB3
66. K-B2	K-Q5	3. P-Q3	Kt-B3
67. B-Kt5	K-B5	4. Kt-KB3	B-K2
68. B-R6	R-Q5	5. Kt-B3	0-0
69. B-Kt5	R-Q3	6. 0-0	P-Q3
70. B-B4	R-Q6	7. P-KR3	B-K3
71. B-R6	K-Q5	8. B-QKt5	P-KR3
72. B-Kt5	K-K4	9. P-Q4	KtxQP

- 10. KtxKt PxBt
- 11. QxP P-R3
- 12. B-K2 P-B4
- 13. Q-Q3 P-Q4
- 14. P-K5 Kt-K1
- 15. R-Q1 P-Q5
- 16. Kt-K4 P-B4
- 17. Kt-Kt3 Q-B2
- 18. P-KB4 R-Q1
- 19. Q-KB3 P-KKt3
- 20. Q-B1 Kt-Kt2
- 21. P-Kt3 P-QKt4
- 22. Kt-R1 Q-B3
- 23. K-R2 B-Q4
- 24. P-QR4 P-B5
- 25. PxKtP RPxP
- 26. PxP PxP
- 27. R-R7 B-B4
- 28. R-R5 Q-Kt3
- 29. R-R4 P-B6
- 30. R-R6 Q-Kt2
- 31. B-R3 BxB
- 32. RxB Q-Kt7
- 33. R-R5 B-K5
- 34. B-Q3 Kt-K3
- 35. R-R7 R-R1
- 36. RxR BxR
- 37. Kt-Kt3 K-Kt2
- 38. R-R1 Q-Kt2
- 39. B-R6 Q-B3
- 40. B-B4 ...

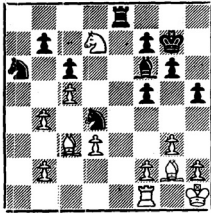
- 40. ... KtXP
- 41. R-R7 ch! K-R1
- 42. RxB RxR
- 43. QxKt K-R2
- 44. B-Q3 R-Q1
- 45. P-R4 P-R4?
- 46. KtxBP PxKt
- 47. QxP ch Resigns.

Game No. 828 Reti

	White	Black
	J. Hanken	N. Weaver
1.	Kt-KB3	Kt-KB3
2.	P-KKt3	P-Q4
3.	B-Kt2	P-B3
4.	0-0	B-B4
5.	P-Q3	P-K3
6.	P-B4	B-K2
7.	Kt-B3	P-KR3
8.	Q-Kt3	Q-Kt3
9.	B-K3	QxQ
10.	PxQ	Kt-R3?
11.	Kt-Q4	Kt-Kt5
12.	KtxB	PxKt
13.	RxP	RxR
14.	BxR	0-0
15.	B-K3	R-R1
16.	B-R3	Kt-Kt5
17.	B-Q2	P-R4
18.	Kt-R4	P-KKt3
19.	P-B5	Kt-R3
20.	Kt-Kt6	R-K1
21.	P-Kt4	B-B3
22.	P-K3	Kt-K4
23.	B-B3	P-Q5
24.	PxP	Kt-B6 ch
25.	K-R1	KtxQP
26.	B-Kt2	K-Kt2



27. Kt-Q7 Resigns
 After 27. ... , R-Q1. 28. KtxB,
 KxKt. 29. R-R1! there is no defense
 to either BxP or, if Kt-B2, 30. R-R7.



Weaver, obviously discouraged from the opening, pessimistically assumes that he must lose a piece. 27. ... , R-Q1; saves the piece. Black should still lose, but if Hanken misplays the position, Weaver would be State Champion.

Game No. 829 French

White Black
 J. Blackstone C. Capps

- | | |
|-----------|--------|
| 1. P-K4 | P-K3 |
| 2. P-Q3 | P-Q4 |
| 3. Kt-Q2 | Kt-QB3 |
| 4. KKt-B3 | P-K4 |
| 5. P-KKt3 | Kt-B3 |
| 6. B-Kt2 | PxP |
| 7. PxP | B-QB4 |
| 8. 0-0 | Q-K2 |
| 9. P-B3 | P-QR4 |
| 10. P-KR3 | B-Q2 |
| 11. Kt-R4 | P-KKt3 |
| 12. K-R2 | R-Q1 |

- | | |
|------------|---------|
| 13. P-R3 | P-R5 |
| 14. QxP | Kt-QKt5 |
| 15. Q-Q1 | Kt-Q6 |
| 16. Q-K2 | B-B3 |
| 17. P-QKt4 | Q-Q2 |
| 18. Kt-Kt3 | B-K2 |
| 19. R-Q1 | B-R5 |
| 20. B-B1 | BxKt |
| 21. RxKt | Q-B3 |
| 22. RxR ch | BxR |
| 23. Q-Kt2 | B-B5 |
| 24. BxB | QxB |
| 25. P-B3 | 0-0 |
| 26. B-R6 | R-K1 |
| 27. Kt-Kt2 | B-K2 |
| 28. Kt-K3 | Q-K3 |
| 29. R-Q1 | P-B3 |
| 30. P-B4 | Kt-Q2 |
| 31. P-KR4 | P-KB4 |
| 32. K-Kt1? | PxP |

32. PxP wins easily after 32. ... , PxP, 33. Q-Q3, QxB, 34. KtxP followed by QxKt.

- | | |
|------------|-------|
| 33. PxP | Kt-B3 |
| 34. Q-QB2 | R-R1 |
| 35. Q-Q3 | R-Q1 |
| 36. Q-B2 | R-R1 |
| 37. Q-Q3 | R-Q1 |
| 38. Q-B2 | R-Q5 |
| 39. B-Kt5 | KtxP |
| 40. BxB | QxB |
| 41. Kt-Kt4 | K-Kt2 |
| 42. Drawn. | |

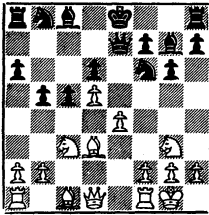
Game No. 830 Benoni

Sharp attack.

White Black
W. Cunningham J. Hanken

24. Q-R5 ch B-R3
25. QxB ch K-Kt1
26. Kt-B5 R-Kt2
27. B-K3 Resigns.

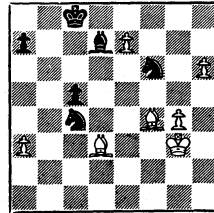
- | | | |
|-----|---------|--------|
| 1. | P-QB4 | Kt-KB3 |
| 2. | P-Q4 | P-B4 |
| 3. | P-Q5 | P-K3 |
| 4. | Kt-QB3 | PxP |
| 5. | PxP | P-QR3 |
| 6. | P-K4 | Q-K2 |
| 7. | B-Q3 | P-QKt4 |
| 8. | KKt-Kt3 | P-KKt3 |
| 9. | Kt-Kt3 | P-KKt3 |
| 10. | 0-0 | B-KKt2 |



- | | | |
|-----|----------|---------|
| 11. | P-K5 | PxP |
| 12. | P-Q6 | Q-R2 |
| 13. | BxP ch | B-Q2 |
| 14. | B-QB4 | 0-0 |
| 15. | P-B4 | Kt-B3 |
| 16. | P-B5 | Kt-R4 |
| 17. | B-Q5 | P-B5 ch |
| 18. | K-R1 | QR-Kt1 |
| 19. | B-Kt5 | KtxB |
| 20. | KtxKt | P-B3 |
| 21. | Kt-K7 ch | K-R1 |
| 22. | KtxP ch | PxKt |
| 23. | PxP | B-R3 |

In the "missed opportunities" department the following was conspicuous:

Black
J. Blackstone



White
A. Spiller

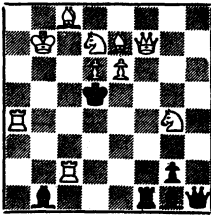
Black played 57...KtxRP (Kt-R4 was forced) to which White replied 58. B-B5 (B-R6 was checkmate!).

The game ended in a draw.

Why do chessplayers overlook such simple moves? More often than not the missed opportunity is ridiculously easy to see later. It is called "chess blindness," which suggests that the player cannot see; but we suggest that it happens because he fails to look.

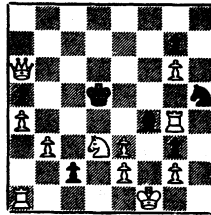
TASKS

No. 229
W. TURA



Mate in 2

No. 230
W. L. BARCLAY



Mate in 3

The two-mover won first prize in the most recent tournament of the British Chess Federation, an annual event which is one of the highlights of the problem world. Unlike difficulty in the traditional two-mover, difficulty here is caused by a choice of three very likely looking moves rather than by general complexity. The Black Rook and Bishop at g1 can be "over-burdened" in three distinct ways, and it is to the composer's credit that each way yields separate mates and only one of the attempts, of course, succeeds.

The three-mover appeared in Chess Life in 1958. The composer is a young American who excels in many composing forms. This example will be especially rewarding for the solver.

FOURTH ANNUAL PACIFIC SOUTHWEST OPEN

July 2-5, 1965

Joslyn Hall, Wilshire & Lincoln

Entry Fee: \$12.50

Prizes: 1st \$300, 2nd \$150 etc.

Rounds: I - Friday, July 2 at 8 P. M. II - Saturday, July 3 at 9 A. M.
III- Saturday, July 3 at 2 P. M. IV - Sunday, July 4 at 9 A. M.
V - Sunday, July 4 at 2 P. M. VI- Monday, July 5 at 9 A. M.
VII-Monday, July 5 at 2 P. M.

Tournament Director: Herbert T. Abel. Registration July 2 before
7:30 P. M. or write H. T. Abel, 4 Marine Terrace, Santa Monica

32nd ANNUAL NORTH vs. SOUTH TEAM MATCH MAY 30

The annual playing of the oldest chess event in California, the annual Northern California vs. Southern California team match, will be held on May 30th at the Hacienda Motel in Fresno.

The Memorial Day week end in 1965 will be for three days, so a full program is being prepared. Among the events being scheduled is a 30-30 tournament to be directed by Gordon S. Barrett. For a full report of the week end activities, watch future issues of The Reporter.

The program will be held at the Hacienda, a new venue for the team match but a familiar one for those who attended the California Open last year. The 91 players and their families who went to the Hacienda in 1964 recommend bringing the whole family, their swimming suits, etc., in order to take full advantage of the facilities.
