



## TOURNAMENT ANNOUNCEMENTS

### GOLDEN BEAR CENTENNIAL OPEN

5-round Swiss. Winner qualifies for California State Championship.

Date: April 19-21, 1968  
Place: 4th Floor, Student Union, U.C. Berkeley Campus  
(Corner of Bancroft & Telegraph)  
Entry Fee: Membership in USCF and CSCF plus:  
\$10.50 for players rated up through 1899;  
\$12.50 for players rated 1900 and above.  
\$15.00 includes membership for U.C. students (with  
reg card) not members of USCF and CSCF.  
Advance entries: Deduct \$2; do not send cash.  
Guaranteed Prizes: \$150 First, \$100 Second, \$50 Third.  
Final Registration: 6:30 pm Friday, April 19, 1968.  
First Round: 8:00 pm Friday, April 19.  
Tournament Director &  
Information: Mike Goodall, 2423 Haste St., Berkeley, CA 94704

### 4th ANNUAL EL SEGUNDO OPEN

Date: April 19-21, 1968. 6-Round Swiss.  
Place: Recreation & Parks Department Clubhouse,  
300 E. Pine Ave., El Segundo, Calif.  
Tel. (213) 322-3842  
Entry Fee: \$12.50  
First Prize: \$200.  
Final Registration: 7:30 pm Friday, April 19, 1968.  
Director: Gordon Barrett





SAIDY NOSES OUT BENKO FOR "AMERICAN OPEN" TITLE

Fighting back from a "lost" ending against Grandmaster Pal Benko in the seventh round, Dr. Anthony Saidy of Los Angeles managed to hold the draw and go on to beat Weinberger in the final round for what must rank as one of the most strenuous and impressive victories in his chess career.

The Thanksgiving holiday event, staged in Santa Monica as were many fine tournaments recently, attracted a field of 131. Of these, at least the top forty were in the running for prizes. Saidy had to dispose of such names as Rivise, Lessing, Spiller, and Binet on his way to the top.

John Blackstone, again playing better than his rating would indicate (see State Championship), won his last four games of the tournament to come even with Benko for second place. Only the top three went undefeated.

Two teenagers battled it out for the clear fourth place spot at 6½ points -- Walter Browne and Jim Tarjan. Walter Harris had a chance, but drew with Hanken to stay at 6 points. Weinberger, Laver, and Rivise also were stopped at 6 by virtue of being paired against the top three in the final round. Then, in a dramatic struggle, Browne pulled out the victory. Only an early and bizarre loss to Sam Sloan kept him off the pace of the front runners.

The winner of the Class A trophy, Bruce Antman, also was awarded the best played game honor by Tournament Director Isaac Kashdan. (See Games). The Highest score by a woman was achieved by Mrs. Bunny Herschensohn, 4 points, who thus took the woman's championship trophy.

As it has been for two previous years, the event was sponsored by the Santa Monica Bay Chess Club. A prize fund of \$2,400 was distributed.

AMERICAN OPEN TOURNAMENT - NOVEMBER 23 - 26, 1967

	1	2	3	4	5	6	7	8	Score
1. Dr. A. Saidy	W35	W28	W37	W7	W59	W13	D2	W5	7½-½
2. P. Benko	W82	W42	D16	W18	W9	W15	D1	W11	7 - 1
3. J. Blackstone	D99	W80	W43	D10	W77	W17	W8	W7	7 - 1
4. W. Browne	W68	W31	L77	W48	W40	D9	W18	W16	6½-1½
5. T. Weinberger	W98	D44	W21	W46	W16	D6	W10	L1	6 - 2

## AMERICAN OPEN - Nov. 23-26, 1967 (Cont.)

	1	2	3	4	5	6	7	8	Score
6. E. Osburn	W100	W48	W17	W40	D13	D5	L7	W27	6 - 2
7. I. Rivise	W101	W45	W27	L1	W32	W12	W6	L3	6 - 2
8. J. Grete	W55	W88*	W22	L13	W30	W28	L3	W25	6 - 2
9. W. Harris	W102	W33	W50	W77	L2	D4	W15	D17	6 - 2
10. R. Kerr	W87	W81	D12	D3	W31	W14	L5	W28	6 - 2
11. R. Laver	W120	L52	W66	W110	W22	W59	W24	L2	6 - 2
12. E. Pruner	W97	W29	D10	L41	W63	L7	W78	W42	5½-2½
13. L. Binet	W66	W63	W39	W8	D6	L1	L16	W43	5½-2½
14. R. Gross	L69	W88	W98	W81	W20	L10	D21	W45	5½-2½
15. Dr. E. Levin	W36	W76	D18	W78	W41	L2	L9	W31	5½-2½
16. J. Tarjan	W86	W64	D2	W61	L5	W45	W13	L4	5½-2½
17. J. Hanken	W112	W30	L6	W50	W69	L3	W32	D9	5½-2½
18. S. Hohensee	W49	W23	D15	L2	W51	W39	L4	W53	5½-2½
19. L. Raterman	W87	W72	L59	W64	D24	L25	W80	W54	5½-2½
20. W. Bragg	L72	W113	W83	W52	L14	D43	W65	W58	5½-2½
21. C. Batchelder	W122	D91	L5	W56	D54	W35	D14	W52	5½-2½
22. B. Antman	W117	W126	L8	W37	L11	D46	W41	W39	5½-2½
23. R. Hammie	W119	L18	W109	D39	W61	W37	L27	W40	5½-2½
24. C. Henin	W83	W32	L40	W33	D19	W41	L11	D29	5 - 3
25. M. Siero	W70	D78	D44	W79	L28	W19	W30	L8	5 - 3
26. R. Shean	W67	W110	W52	L59	D45	D43	L31	W64	5 - 3
27. S. Rubin	W105	W124	L7	L69	W98	W36	W23	L6	5 - 3
28. M. Davidson	W127	L1	W84	W35	W25	L8	W59	L10	5 - 3
29. B. Reynolds	W73	L12	D70	L103	W112	W111	W57	D24	5 - 3
30. S. Geller	W130	L17	W55	W67	L8	W100	L25	W66	5 - 3
31. B. Pollard	W71	L4	W101	W44	L10	W69	W26	L15	5 - 3
32. S. Almgren	W106	L24	W124	W91	L7	W67	L17	W73	5 - 3
33. B. Hochberg	W108	L9	W112	L24	W68	L53	W100	W59	5 - 3
34. F. Foruoff	W116	L37	D72	W92	L39	W87	D53	W60	5 - 3
35. R. Klein	L1	W127	W118	W28	W95	L21	W76	W62	5 - 3
36. J. Mathis	L15	L106	W130	W124	W48	L27	W61	W63	5 - 3
37. A. Spiller	W85	W34	L1	L22	W78	L23	D82	W81	4½-3½
38. J. Dedinsky	W111	D53	L46	L54	L87	W71	W65	W80	4½-3½
39. G. Saidi	W95	W96	L13	D23	W34	L18	W79	L22	4½-3½
40. M. Leidner	W121	W65	W24	L6	L4	W64	D52	L23	4½-3½
41. L. Kupersmith	D89	W94	W54	W12	L15	L24	L22	W82	4½-3½
42. N. Wood	W56	L2	L69	D112	W89	W84	W81	L12	4½-3½
43. L. Enequist	D80	W92	L3	W70	W103	D26	D20	L13	4½-3½
44. P. Rhee	W114	D5	D25	L31	W66	D54	L58	W83	4½-3½
45. H. Milner	W107	L7	W100	W97	D26	L16	W91	L14	4½-3½
46. W. Dorne	D92	W99	W38	L5	D58	D22	L54	W86	4½-3½
47. H. Singleton	W123	L59	D56	D57	L67	D72	W89	W92	4½-3½
48. R. Neustaedter	W115	L6	W85	L4	L36	W90	W69	D51	4½-3½

## AMERICAN OPEN - Nov. 23-26, 1967

	1	2	3	4	5	6	7	8	Score
49. A. Lubin	L18	L71	W107	W104	D84	D86	D55	W91	4½-3½
50. J. Kolkey	W75	W103	L9	W17	L100	W104	D86	W94	4½-3½
51. F. Hufnagel	L94	W105	D91	W75	L18	W92	D60	D48	4½-3½
52. O. Stumbrs	W58	W11	L26	L20	W72	W77	D40	L21	4½-3½
53. S. Katona	W129	D38	L61	D60	W88	W33	D34	L18	4½-3½
54. P. Shuey	W125	D61	L41	W38	D21	D44	W46	L19	4½-3½
55. R. Williams	L8	W131	L30	W117	L64	W118	D49	W77	4½-3½
56. R. Gardner	L42	W129	D47	L21	L62	W93	W110*W78		4½-3½
57. K. Commons	L19	D62	W99	D47	D82	W110	L29	W79	4½-3½
58. J. Hoggatt	L52	W86	W65	D63	D46	D91	W44	L20	4½-3½
59. N. Lessing	W84	W47	W19	W26	L1	L11	L28	L33	4 - 4
60. H. Mayer	D103	W89	L78	D53	W97	D63	D51	L34	4 - 4
61. K. Stani	W104	D54	W53	L16	L23	D82	L36	W103	4 - 4
62. K.R. Jones	L91	D57	L92	W99	W56	D83	W67	L35	4 - 4
63. D. M. Balfe	W74	L13	W111	D58	L12	D60	W68	L36	4 - 4
64. V. Tokoreff	W109	L16	W93	L19	W55	L40	W75	L26	4 - 4
65. S. Beckwith	W118	L40	L58	W71	W75	L20	L38	W104	4 - 4
66. F. Berry	L13	W107	L11	W105	L44	W74	W95	L30	4 - 4
67. M. Klass	L26	W74	W76	L30	W47	L32	L62	W105	4 - 4
68. E. Cowan	L4	W115	W95	L114	L33	W107	L63	W106	4 - 4
69. V. Fagin	W14	L77	W42	W27	L17	L31	L48	W107	4 - 4
70. C. Swords	L25	W128	D29	L43	L92	D121	W124	W109	4 - 4
71. R. Usan	L31	W49	L110	L65	W116*L38	W123	W95		4 - 4
72. J. Kent	W20	L19	D34	D80	L52	D47	D99	W96	4 - 4
73. K. Leonhardt	L29	L97	W126	L83	W129	W98	W96	L32	4 - 4
74. Mrs. Hershensohn	L63	L67	L86	W113	W126	L66	W102	W126	4 - 4
75. W. Beattie	L50	W104	W96	L51	L65	W102	L64	W100	4 - 4
76. G. Schain	W113	L15	L67	L88	W123	W97	L35	D87	3½-4½
77. S. Sloan	W90	W69	W4	L9	L3	L82	D83	L55	3½-4½
78. D. Littrell	W128	D25	W60	L15	L37	W101	L12	L56	3½-4½
79. R. Edberg	L124	W90	W87	L25	D83	W103	L39	L57	3½-4½
80. S. Silven	D43	L3	W89	D72	D101	W109	L19	L38	3½-4½
81. Dr. T. Bullockus	W93	L10	W106	L14	D86	W94	L42	L37	3½-4½
82. Mrs. L. Grumette	L2	L18	W114	W106	D57	D61	D37	W41	3½-4½
83. Miss G. Olsson	L24	W114	L20	W73	D79	D62	D77	L44	3½-4½
84. C. Henderson	L59	W130	L28	W116	D49	L42	L92	W101	3½-4½
85. D. Showers	L37	W119	L48	D109	L94	L89	W115	W116	3½-4½
86. Mrs. J. Batchelder	L16	L58	W74	W118	D81	D49	D50	L46	3½-4½
87. D. Welsh	L10	W123	L79	D94	W38	L34	D103	D76	3½-4½
88. Dr. H. Matty	L8*	L14	W128	W76	L53	L95	D117	W118	3½-4½
89. E. F. Hurt Jr.	D41	L60	L80	W108	L42	W85	L47	W117	3½-4½
90. D. Foslien	L77	L79	L116	W125	W115	L48	D118	W111	3½-4½
91. L. Nezhni	W62	D21	D51	L32	W96	D58	L45	L49	3½-4½

## AMERICAN OPEN - Nov. 23-26, 1967 (Cont.)

	1	2	3	4	5	6	7	8	Score
92. G. Tuttle	D46	L43	W62	L34	W70	L51	W84	L47	3½-4½
93. R. Harvery	L81	W120	L64	L101	D122	L56	W127	W113	3½-4½
94. L. Piliarin	W51	L41	L97	D87	W85	L81	W111	L50	3½-4½
95. D. Steers	L39	W121	L68	W119	L35	W88	L66	L71	3 - 5
96. K. Schaumburger	W126	L39	L75	W122	L91	W106	L73	L72	3 - 5
97. N. Kurtz	L12	W73	W94	L45	L60	L76	L105	W123	3 - 5
98. P. Vayssie	L5	W122	L14	W123	L27	L73	L107	W124	3 - 5
99. H. Winter	D3	L46	L57	L62	W128	W122	D72	-	3 - 5
100. P. Razien	L6	W117	L45	W115	W50	L30	L33	L75	3 - 5
101. A. J. Boness	L7	W108	L31	W92	D80	L78	D109	L84	3 - 5
102. C. Fotias	L9	L109	L103	W130	W124	L75	L74	W126	3 - 5
103. R. Melniker	D60	L50	W102	W29	L43	L79	D87	L61	3 - 5
104. J. Nanassy	L61	L75	W108	L49	W131	L50	W121	L65	3 - 5
105. A. Jones	L27	L51	W125	L66	L109	W131	W97	L67	3 - 5
106. S. Gusner	L32	W36	L81	L82	W117	L96	W112	L68	3 - 5
107. L. R. Judd	L45	L66	L49	W120	W119	L68	W98	L69	3 - 5
108. J. Coan	L33	L101	L104	L89	BYE	L123	W131	W122	3 - 5
109. W. Dunkin	L64	W102	L23	D85	W105	L80	D101	L70	3 - 5
110. G. C. Miller	W131	L26	W71	L11	D111	L57	L56*	-	2½-5½
111. L. Mulinex	L38	W116	L63	W131	D110	L29	L94	L90	2½-5½
112. R. Radl	L17	W125	L33	D42	L29	L113	L106	W129	2½-5½
113. J. Weiler	L76	L20	L117	L74	W130	W112	D116	L93	2½-5½
114. W. McGrann	L44	L83	L82	W68	L118	L117	D129	W131	2½-5½
115. D. Bragg	L48	L68	W120	L100	L90	D119	L85	W127	2½-5½
116. W. Mohawk	L34	L111	W90	L84	L71*	W130	D113	L85	2½-5½
117. B. Murdock	L22	L100	W113	L55	L106	W114	D88	L89	2½-5½
118. D. Ifill	L65	W82	L35	L86	W114	L55	D90	L77	2½-5½
119. R. Osborne	L23	L85	W127	L95	L107	D115	D122	D120	2½-5½
120. J. A. Jiron	L11	L93	L115	L107	L121	BYE	D125	D119	2 - 6
121. Dr. G. Wood	L40	L95	L123	D128	W120	D70	L104	-	2 - 6
122. W. Singleton	L21	L98	W129	L96	D93	L99	D119	L108	2 - 6
123. A. Epstein	L47	L87	W121	L98	L76	W108	L71	L97	2 - 6
124. D. Hinrichsen	W79	L27	L32	L36	L102	W126	L70	L98	2 - 6
125. K. Morrissey	L54	L112	L105	L90	D127	W128	D120	L74	2 - 6
126. M. Siero	L96	L22	L73	W127	L74	L124	W128	L102	2 - 6
127. A. Patsch	L28	L35	L119	L126	D125	W129	L93	L115	1½-6½
128. J. Narcisi	L78	L70	L88	D121	L99	L125	L126	BYE	1½-6½
129. Miss N. Jones	L53	L56	L122	BYE	L73	L127	D114	L112	1½-6½
130. R. Wood	L30	L84	L36	L102	L113	L116	BYE	-	1 - 7
131. E. Briggs	L110	L55	BYE	L111	L104	L105	L108	L114	1 - 7



SANTA MONICA INTERNATIONAL, 1967: ADDISON, SAIDY

Through one of those organizational nightmares that turns out well in the morning, a new tournament tradition has been inaugurated in southern California that could well be the showcase of local chess.

Originally, organizers in Santa Monica sought to take advantage of the presence of international masters and grandmasters in Winnipeg by presenting a Hastings-type round-robin in the Los Angeles area. Local USCF masters have little chance to earn FIDE recognition unless European masters in sufficient numbers can be "imported" to local events. At the last minute, the word from Winnipeg was no - yet an excellent field was assembled because of the temporary residence of such players as Julio Kaplan (of Puerto Rico, World Junior Champion now at U.C. Berkeley), László Binet (former champion of Venezuela) and Walter Browne. Addison, Weinberger, Henin, Saily and Lessing - the strength as well as the promise of California chess - completed the list.

The fact that good competition produces good chess was never more evident. The favorites, Addison and Saily, finished in a tie of 5-2, but the path was strewn with thorns. Browne lost on time with one move remaining in a critical fifth round game with Addison - when he might well have won and outdistanced the field. But Addison stumbled in the final round with the last-place finisher - to satisfy the fates.

SANTA MONICA INTERNATIONAL

	1	2	3	4	5	6	7	8	Score
1. Addison	X	$\frac{1}{2}$	1	$\frac{1}{2}$	1	0	1	1	5 - 2
2. Saily	$\frac{1}{2}$	X	$\frac{1}{2}$	0	1	1	1	1	5 - 2
3. Browne	0	$\frac{1}{2}$	X	1	1	1	1	0	4 $\frac{1}{2}$ -2 $\frac{1}{2}$
4. Weinberger	$\frac{1}{2}$	1	0	X	0	1	$\frac{1}{2}$	1	4 - 3
5. Lessing	0	0	0	1	X	1	1	0	3 - 4
6. Binet	1	0	0	0	0	X	$\frac{1}{2}$	1	2 $\frac{1}{2}$ -4 $\frac{1}{2}$
7. Kaplan	0	0	0	$\frac{1}{2}$	0	$\frac{1}{2}$	X	1	2 - 5
8. Henin	0	0	1	0	1	0	0	X	2 - 5

BLACKSTONE FIRST, BAROUDI SECOND IN NORTHERN CALIFORNIA CHAMPIONSHIP

John Blackstone edged out Ziad Baroudi in this qualifying event for the State Championship on tie breaking points. Both players scored  $4\frac{1}{2}-\frac{1}{2}$ . Blackstone met Frank Thornally in the final round and the two top-rated players in the tournament had an interesting game in which Blackstone, as Black defended successfully (see Games).

NORTHERN CALIFORNIA CHAMPIONSHIP

	1	2	3	4	5	Score
1. J. Blackstone	W16	W21	W26	D2	W8	$4\frac{1}{2}-\frac{1}{2}$
2. Z. Baroudi	W44	W39	W4	D1	W13	$4\frac{1}{2}-\frac{1}{2}$
3. R. Laver	W17	W6	D8	D5	W11	4 - 1
4. E. Osbun	W33	W10	L2	W14	W19	4 - 1
5. S. Sloan	D30	W41	W20	D3	W18	4 - 1
6. D. Forthoffer	W36	L3	W35	W *	D14	$3\frac{1}{2}-1\frac{1}{2}$
7. H. Rosenbaum	W43	L13	W25	W32	D9	$3\frac{1}{2}-1\frac{1}{2}$
8. F. Thornally	W15	W19	D3	W13	L1	$3\frac{1}{2}-1\frac{1}{2}$
9. J. Ulrich	W31	W12	L13	W10	D7	$3\frac{1}{2}-1\frac{1}{2}$
10. D. Clark	W29	L4	W31	L9	W33	3 - 2
11. F. Crofut	W41	W30	L14	W24	L3	3 - 2
12. A. Eydal	W40	L9	D36	D20	W32	3 - 2
13. D. Fritzinger	W22	W7	W9	L8	L2	3 - 2
14. K. Grivainis	W35	D18	W11	L4	D6	3 - 2
15. R. McCollough	L8	L27	W43	W38	W29	3 - 2
16. A. McKenzie	L1	W34	L27	W35	W26	3 - 2
17. G. Olsson	L3	W43	L19	W42	W21	3 - 2
18. R. Swanson	W23	D14	W24	W *	L5	3 - 2
19. C. Wilson	W37	L8	W17	W29	L4	3 - 2
20. R. Freeman	W42	D24	L5	D12	D25	$2\frac{1}{2}-2\frac{1}{2}$
21. R. Grey	W32	L1	W3?	D26	L17	$2\frac{1}{2}-2\frac{1}{2}$
22. R. Hough	L13	W37	L28	W40	D24	$2\frac{1}{2}-2\frac{1}{2}$
23. R. Mitchell	L18	L33	W37	D31	W39	$2\frac{1}{2}-2\frac{1}{2}$
24. E. Syrett	W25	D20	D18	L11	D22	$2\frac{1}{2}-2\frac{1}{2}$
25. R. Wheeler	L24	W36	L7	W *	D20	$2\frac{1}{2}-2\frac{1}{2}$
26. H. Winter	W27	W28	L1	D21	L16	$2\frac{1}{2}-2\frac{1}{2}$
27. J. Gutierrez	L26	W15	W16	-	-	2 - 3
28. R. L. Henry	W34	L26	W22	-	-	2 - 3
29. E. Ipsen	L10	W44	W39	L19	L15	2 - 3
30. M. Mattingley	D5	L1 <sup>1</sup>	L41	D36	W37	2 - 3
31. D. Olmsted	L9	W38	L10	D23	D34	2 - 3
32. C. Vail	L21	W40	W42	L7	L12	2 - 3
33. P. Vayssie	L4	W23	L21	W43	L10	2 - 3
34. G. Marhart	L28	L16	L40	W39	D31	$1\frac{1}{2}-3\frac{1}{2}$
35. H. Porschman	L14	W42	L6	L16	D36	$1\frac{1}{2}-3\frac{1}{2}$

NORTHERN CALIFORNIA CHAMPIONSHIP

	1	2	3	4	5	Score
36. J. Rowell	L6	L25	D12	D30	D35	1½-3½
37. A. Gullmes	L19	L22	L23	W *	L30	1 - 4
38. K. Leonhardt	L39	L31	W44	L15	-	1 - 4
39. D. Litowsky	W38	L2	L29	L34	L23	1 - 4
40. K. Morrissey	L12	L32	W34	L22	-	1 - 4
41. I. Pohl	L11	L5	W30	-	-	1 - 4
42. R. Lanovette	L20	L35	L32	L17	D43	½ -4½
43. D. Mitchell	L7	L17	L15	L33	D42	½ -4½
44. L. O'Doan	L2	L29	L38	-	-	0 - 5

ALLAN TROY EL SEGUNDO CLUB CHAMPION

Allan Troy breezed through the El Segundo Club championship held during October and November. The cross-table:

	1	2	3	4	5	6	Score
1. A. Troy	W11	W12	W4	W5	W3	L2*	5 - 1
2. H. Walpuski	L12	W14	D3	W9	W10	W1*	4½-1½
3. A. Gojich	D13	W16	D2	W6	L1	W4	4 - 2
4. R. Taylor	W15	W8	L1	W7	W5	L3	4 - 2
5. I. Lyon	W16	W7	W10	L1	L4	W9	4 - 2
6. H. Shipin	L9	W15	W8	L3	W12	W10	4 - 2
7. H. Cillers	W17	L5	W12	L4	D8	W13	3½-2½
8. J. Nanassy	BYE	L4	L6	W15	D7	W16	3½-2½
9. J. Porter	W6	L10	W13	L2	W11	L5	3 - 3
10. J. Stolpe	W14	W9	L5	W11	L2	L6	3 - 3
11. L. Vorderstrasse	L1	W13	W17	L10	L9	W15	3 - 3
12. A. Caldwell	W2	L1	L7	D14	L6	BYE	2½-3½
13. V. Lopez	D3	L11	L9	W17	W14	L7	2½-3½
14. M. Gojich	L10	L2	BYE	D12	L13	W17	2½-3½
15. Dr. B. Glazer	L4	L6	W16	L8	BYE	L11	2 - 4
16. R. Radl	L5	L3	L15	BYE	W17	L8	2 - 4
17. A. Dahm	L7	BYE	L11	L13	L16	L14	1 - 5

GOODALL WINS CASTLE CLUB TITLE

Mike Goodall won the club championship in his rookie year in the Castle Chess Club (the first time this has happened, we believe). Mike lost only one game (to Les Talcott) and drew one game (with Art Wang). Henry Gross, perennial Castle champion, was one point behind Goodall. There were several upsets in the tournament; the last-place Spencer Van Gelder, for example, defeated Wang and Talcott and drew with Gross. The cross-table:

## CASTLE CHESS CLUB

	1	2	3	4	5	6	7	8	9	10	11	12	Score
1. M. Goodall	X	1	1	1	$\frac{1}{2}$	0	1	1	1	1	1	1	9 $\frac{1}{2}$ -1 $\frac{1}{2}$
2. H. Gross	0	X	1	1	0	1	1	1	1	1	1	$\frac{1}{2}$	8 $\frac{1}{2}$ -2 $\frac{1}{2}$
3. Dr. R. Hultgren	0	0	X	$\frac{1}{2}$	1	0	1	1	1	$\frac{1}{2}$	1	1	7 - 4
4. R. Freeman	0	0	$\frac{1}{2}$	X	0	1	$\frac{1}{2}$	$\frac{1}{2}$	1	1	1	1	6 $\frac{1}{2}$ -4 $\frac{1}{2}$
5. A. Wang	$\frac{1}{2}$	1	0	1	X	1	0	$\frac{1}{2}$	$\frac{1}{2}$	1	1	0	6 $\frac{1}{2}$ -4 $\frac{1}{2}$
6. L. Talcott	1	0	1	0	0	X	$\frac{1}{2}$	$\frac{1}{2}$	1	1	1	0	6 - 5
7. G. Farly	0	0	0	$\frac{1}{2}$	1	$\frac{1}{2}$	X	1	0	1	0	1	5 - 6
8. G. McClain	0	0	0	$\frac{1}{2}$	$\frac{1}{2}$	$\frac{1}{2}$	0	X	1	1	$\frac{1}{2}$	1	5 - 6
9. C. Wilson	0	0	0	0	$\frac{1}{2}$	0	1	0	X	0	1	1	3 $\frac{1}{2}$ -7 $\frac{1}{2}$
10. E. Lien	0	0	$\frac{1}{2}$	0	0	0	0	0	1	X	$\frac{1}{2}$	1	3 - 8
11. D. E. Kupka	0	0	0	0	0	0	1	$\frac{1}{2}$	0	$\frac{1}{2}$	X	1	3 - 8
12. S. Van Gelder	0	$\frac{1}{2}$	0	0	1	1	0	0	0	0	0	X	2 $\frac{1}{2}$ -8 $\frac{1}{2}$

"LYON'S SHARE" OPEN HELD AT EL SEGUNDO USES NEW PRIZE SYSTEM

Irwin J. Lyon of Fort MacArthur whiles away his time between radar assignments dreaming up new systems of prize distribution. His point system was tried on December 2-3 at El Segundo. The rules were that all plus scores receive a prize, and the guaranteed minimum was one-half of the entry fee for each half-point over average. We are not familiar with any other variations, but the results were: L Beavers for 1st place, \$26.64; D. Sefton and V. Fagin, \$13.32 each; G. Saudek \$6.66; and the players with three points, \$3.33 each. The tournament was restricted to players rated under 1800 points.

	1	2	3	4	5	Score
1. L. Beavers	W7	W14	W4	W5	D2	4 $\frac{1}{2}$ -1 $\frac{1}{2}$
2. D. Sefton	W15	W8	D5	W7	D1	4 - 1
3. V. Fagin	L5	W10	W9	W14	W6	4 - 1
4. G. Saudek	BYE	W13	L1	W11	D5	3 $\frac{1}{2}$ -1 $\frac{1}{2}$
5. V. Lopez	W3	W6	D2	L1	D4	3 - 2
6. H. Cillers	W17	L5	W8	W15	L3	3 - 2
7. R. Radl	L1	W16	W18	L2	W13	3 - 2
8. J. Stolpe	W12	L2	L6	W17*	W14	3 - 2
9. O. Higgins	D11	W18	L3	D13	W15	3 - 2
10. G. Tuttle	L13	L3	BYE	W18	W19	3 - 2
11. D. Shander	D9	W19	D13	L4	D22	2 $\frac{1}{2}$ -2 $\frac{1}{2}$
12. J. Nanassy	L8	L15	W16	W19	D11	2 $\frac{1}{2}$ -2 $\frac{1}{2}$
13. W. Howard	W10	L4	D11	D9	L7	2 - 3
14. T. Lydersen	W16	L1	W19	L3	L8	2 - 3
15. R. Van Horne	L2	W12	W17	L6	L9	2 - 3
16. W. Neel	L14	L7	L12	BYE	W18	2 - 3
17. D. Bragg	L6	BYE	L15	L8*	L1	1 - 4
18. J. Narcisi	D19	L9	L7	L10	L16	$\frac{1}{2}$ -4 $\frac{1}{2}$
19. H. Shiffin	D10	L11	L11	L11	L11	$\frac{1}{2}$ -4 $\frac{1}{2}$

MATHIS WINS FLIGHT OF THE BUMBLER BEE TOURNAMENT AT MONTEREY

A tournament for players rated under 1800 points was held at Monterey October 28 - 29. J. Mathis won first prize with a perfect score of 5-0. There were three players tied for second, 4 - 1. The scores:

BUMBLER BEE TOURNAMENT

	1	2	3	4	5	Score
1. J. Mathis	W31	W29	W15	W2	W6	5 - 0
2. D. Wilson	W26	W20	W16	L1	W5	4 - 1
3. D. Ackerman	W12	L5	W30	W14	W10	4 - 1
4. B. Gross	W33	L14	W29	W18	W11	4 - 1
5. P. Herbers	W24	W3	D8	W7	L2	3½-1½
6. G. Gribble	W23	D7	W9	W8	L1	3½-1½
7. M. Mattingly	W30	D6	W14	L5	W16	3½-1½
8. R. Irwin	W28	W25	D5	L6	W17	3½-1½
9. C. Swords	D17	W31	L6	W27	W15	3½-1½
10. R. Cuneo	W13	L15	W19	W23	L3	3 - 2
11. V. Pope	W32	L16	W12	W17	L4	3 - 2
12. J. Rowell	L3	W22	L11	W24	W23	3 - 2
13. N. Tripolski	L10	D27	W33	W29	D19	3 - 2
14. P. Polland	W35*	W4	L7	L3	D20	2½-2½
15. J. Sutherland	W21	W10	L1	D16	L9	2½-2½
16. P. Vayssie	W18	W11	L2	D15	L7	2½-2½
17. Dr. David-Malig	D9	W28	W24	L11	L8	2½-2½
18. P. Clark	L16	W21	W25	L4	D22	2½-2½
19. Col. C. Daly	L20	W32	L10	W25	D13	2½-2½
20. J. Jennings	W19	L2	L23	W28	D14	2½-2½
21. D. Matthes	L15	L18	D28	W32	W27	2½-2½
22. S. Thomas	L29	L12	W32	W30	D18	2½-2½
23. P. Sulky	L6	W33	W20	L10	L12	2 - 3
24. W. Wise	L5	W26	L17	L12	W30	2 - 3
25. D. Hinrichsen	W27	L8	L18	L19	W29	2 - 3
26. T. Diemick	L2	L24	L27	W34	W31	2 - 3
27. M. Bartholow	L25	D13	W26	L9	L21	1½-3½
28. Duncanson	L8	L17	D21	L20	W32	1½-3½
29. F. Mills	W22	L1	L4	L13	L25	1 - 4
30. W. Kennedy	L7	W34	L3	L22	L24	1 - 4
31. H. Maeger	L1	L9	-	W33*	L26	1 - 4
32. D. Ackerman	L11	L19	L22	L21	L28	0 - 5
33. J. Antuna	L4	L23	L13	L31*	-	0 - 5
34. G. Nelson	-	L30	-	L26	-	0 - 5
35. G. Olsson	L14	-	-	-	-	0 - 5

LEIDNER WINS NAA VALLEY CLUB CHAMPIONSHIP

Mike Leidner won the NAA Valley Club tournament held in the Fall, by the fine score of  $5\frac{1}{2}-\frac{1}{2}$ . Leidner drew in the second round with Gordon Barrett, who took second place with a 5-1 score. Matt Ek won the third-place trophy,  $4\frac{1}{2}-1\frac{1}{2}$ . Class trophies were won by Warner, Faelten, Forrest, Mastous, and Rudin. The cross-table:

NAA VALLEY CHESS CLUB CHAMPIONSHIP

	1	2	3	4	5	6	Score
1. M. Leidner	W14	D2	W4	W5	W9	W7	$5\frac{1}{2}-\frac{1}{2}$
2. G. Barrett	W17	D1	W3	W7	W4	D8	5 - 1
3. M. Ek	W18	D7	L2	W16	W19	W9	$4\frac{1}{2}-1\frac{1}{2}$
4. C. Warner	W12	W8	L1	W6	L2	W15	4 - 2
5. H. Kolin	W19	W16	W6	L1	L7	W12	4 - 2
6. W. Thomson	W10	W9	L5	L4	W15	W11	4 - 2
7. T. Lajcik	W20	D3	W13	L2	W5	L1	$3\frac{1}{2}-2\frac{1}{2}$
8. R. Berggren	W11	L4	L15	W18	W13	D2	$3\frac{1}{2}-2\frac{1}{2}$
9. L. Rudin	W21	L6	W17	W15	L1	L3	3 - 3
10. Olmore	L6	W22*	D20	W14	L3	D16	3 - 3
11. Faelten	L8	D21	W22*	D13	W16	L6	3 - 3
12. K. Forrest	L4	L15	W19	W17	W20	L5	3 - 3
13. A. Freibergs	D15	W19	L7	D11	L8	W17	3 - 3
14. W. Korst	L1	L17	W21	L10	W18	W20*	3 - 3
15. W. Hall	D13	W12	W8	L9	L6	L4	$2\frac{1}{2}-3\frac{1}{2}$
16. R. McKisson	W22	L5	W18	L3	L11	D10	$2\frac{1}{2}-3\frac{1}{2}$
17. Bulgier	L2	W14	L9	L12	W19	L13	2 - 4
18. Mastous	L3	W20	L16	L8	L14	BYE	2 - 4
19. Levy	L5	L13	L12	BYE	L17	W21	2 - 4
20. Holtom	L7	L18	D10	W21	L12	L14	$1\frac{1}{2}-4\frac{1}{2}$
21. Oliva	L9	D11	L14	L20	BYE	L19	$1\frac{1}{2}-4\frac{1}{2}$
22. Simoskowitz	L16	L10*	L11*	-	-	-	0 - 6

OFFICERS ELECTED FOR 1968:CALIFORNIA STATE CHESS FEDERATION

President ----- Isaac Kashdan  
 Vice-President-- John Blackstone  
 Treasurer ----- Ralph Hultgren  
 Secretary ---- Spencer Van Gelder

LOS ANGELES CHESS LEAGUE

President-----Darrell Rader  
 Vice-President---Hank Shipin  
 Secretary-----Dave Argall  
 Treasurer-----Larry Hoke  
 Tournament Director-Gordon Barrett  
 Asst. Tourn. Dir.-Ken Fleshman

GAME OF THE MONTH

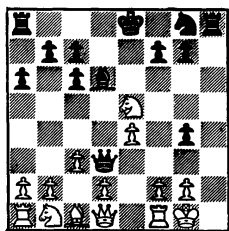
The State Championship produced fighting chess - plus a good mixture of opening experimentation and endgame surprises (for an endgame surprise, see Tasks).

STATE CHAMPIONSHIP, 1967

Game No. 1023 - Ruy Lopez

White	Black
<u>N. Weaver</u>	<u>J. Tarjan</u>
1. P-K4	P-K4
2. Kt-KB3	Kt-QB3
3. B-Kt5	P-QR3
4. BxKt	QPxB
5. O-O	B-KKt5
6. P-KR3	P-KR4
7. P-B3	Q-Q6
8. PxP	PxP
9. KtxP	B-Q3

If this offer holds up, it has theoretical interest as an answer to the White line of play recently popularized (as so many obscure lines are) by Fischer.



10. KtxP? ...  
White declines to take the draw by perpetual after KtxQ (and if this is all Black has, why play the "aggressive" P-KR4?) However, White could play to keep his ill-gotten gains by 10. P-KB4, when B-B4ch; 11. R-B2 or Q-Kt6; P-Q4 is adequate.

10. ... Kt-B3  
11. R-K1  
Now white would be happy to accept a perpetual, since 11. P-K5, KtxKt; 12. PxP, Q-R2 is fatal.

11. ... KtxKt  
12. QxKt B-R7ch  
13. K-R1 R-Q1?  
Courageous Black is now in serious danger of being a piece down, as he scorns the draw he so recently played for.

14. Q-B3 Q-Q3  
15. Kt-R3? ...  
He wants to play P-Q4 and must guard against B-B5ch and Q-R3, but the opportunity to break the bind was at hand. 15. P-K5, Q-K3 (else P-K6) Kt-R3 would keep the Black QR bottled up and allow time for an eventual P-KKt3.

15. ... Q-K2  
16. P-Q4 ...  
Again White could not play P-KKt3 because of BxPch followed by R-R7ch. A black piece must either guard KKt6 or threaten a mate at KR5.

16. ... R-Q3  
Now the threat of R-Kt3 and a permanent bind forces White to go after his own perpetual.

- |            |       |
|------------|-------|
| 17. P-K5   | R-Kt3 |
| 18. Q-B5   | Q-R5  |
| 19. Q-B8ch | K-K2  |
| 20. QxPch  | K-K1  |
| 21. Q-B8ch | K-K2  |
| 22. O-B7ch | DRAW  |

TEXAS PRODUCES NEW MAGAZINE - CHESS DIGEST

We have received the January, 1968, issue of a new magazine, Chess Digest, from Dallas, Texas. The editor is our old friend Kenneth R. Smith and he has no less than six translators working for him, plus two typists. The languages listed are: Russian, Yugoslav, German, Hungarian, Latvian, and French. The magazine offers twelve issues per year for \$8. The address: P. O. Box 21225, Dallas, Texas 75211.

The first issue is 24 pages. The one page of news has reports by Bent Larsen and Leonid Polufaeysky. There are nine pages of openings, three pages of theory and games, two pages of middlegames, and eight pages of current tournament games. The last two pages are devoted to practical continuations from actual games, end games, and problems. We counted no less than 57 diagrams!

This magazine is a "class" publication and we recommend it.

GAMES

As noted in our last issue, William G. Addison of San Francisco earned the International Master title at Maribor, Yugoslavia. Here is a lively game which Addison won against a Yugoslav grandmaster:

Game No. 1024 - Benoni Deferred

	White Addison	Black Janosevic
1.	P-Q4	Kt-KB3
2.	P-QB4	P-B4
3.	P-Q5	P-KKt3
4.	Kt-QB3	P-Q3
5.	P-K4	B-Kt2
6.	Kt-B3	O-O
7.	B-K2	P-K4
8.	B-Kt5	P-KR3
9.	B-R4	Kt-R3
10.	Kt-Q2	Kt-B2
11.	P-QR3	B-Q2
12.	P-QKt4	P-Kt3
13.	O-O	P-KKt4
14.	B-Kt3	Q-K2
15.	R-QKt1	KR-Kt1

16. Kt-Kt3                    Kt-R3

17. Kt-R1                    P-R4

A double-edged move that results in the weakening of his King-side, even if it does eventually gain the exchange; however, if 17...

Kt-K1 with the intention of playing P-K B4, then White gains control of the white squares by 18. B-Kt4.

18. BxRP                    KtxB

19. QxKt                    PxP

20. PxP                    P-B4

21. PxP                    BxP

22. Q-K2                    -..

After 22. R-Kt3, B-Q6 Black regains his pawn and has fine play for his Bishops.

22. ...                    BxR

23. RxB                    Kt-B2

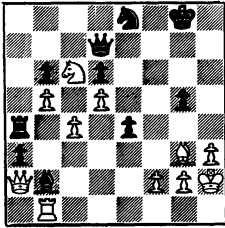
24. Kt-B2                    P-R4

A mistake that allows the White Kt to obtain a dominating position correct was 24... Q-Q1.

25. Kt-Q4                    Q-Q2



- 26. Kt-B6 R-K1
- 27. P-Kt5 P-R5
- 28. Q-B2 P-R6
- 29. Kt-R4 RxKt
- 30. QxR R-R1
- 31. Q-Kt3 P-K5
- 32. Q-R2 Kt-K1
- 33. P-R3 R-R5
- 34. K-R2 B-Kt7



- 35. RxB PxR
- 36. QxP RxP
- 37. Q-K2 R-R5
- 38. Q-B2 R-R8
- 39. QxP Q-KB2
- 40. Kt-Q8 Q-R5
- 41. Q-K6ch Resigns

(Notes from the Times Saturday Review by H. Golombek).

CALIFORNIA STATE CHAMPIONSHIP, 1967

Game No. 1025 - Robatsch

- | White           | Black                |
|-----------------|----------------------|
| <u>L. Binet</u> | <u>J. Blackstone</u> |
| 1. P-Q4         | P-KKt3               |
| 2. P-K4         | B-Kt2                |
| 3. P-QB4        | P-Q3                 |
| 4. Kt-QB3       | Kt-Q2                |
| 5. P-B3         | P-K4                 |
| 6. B-K3         | P-QB3                |
| 7. Q-Q2         | KKt-B3               |
| 8. 0-0-0        | 0-0                  |
| 9. P-KKt4       | P-QR3                |
| 10. P-Q5        | P-B4                 |

- 11. B-R6 P-QKt4
- 12. KKt-K2 Q-R4
- 13. Kt-Kt3 P-Kt5
- 14. Kt-Kt QxP
- 15. P-R4 Kt-Kt3
- 16. BxB KxB
- 17. Q-Q3 P-QR4
- 18. R-Q2 P-R5
- 19. KR-R2 B-R3
- 20. R-QB2 Q-R8
- 21. P-R5 P-R6
- 22. PxBP BxP
- 23. RxB RxP
- 24. Q-Q KR-QR
- 25. QR-B2 QxKtch
- 26. K-Q2 QxQch
- 27. KxQ RxP
- 28. R-R3 R(1)-R6
- 29. R-KKt2 RxBch
- 30. KtxR RxB
- 31. P-R6ch K-B
- 32. R-KB2 KtxKP

RESIGNS

Game No. 1026 - Sicilian

- | White            | Black            |
|------------------|------------------|
| <u>W. Browne</u> | <u>N. Weaver</u> |
| 1. P-K4          | P-QB4            |
| 2. Kt-KB3        | P-Q3             |
| 3. P-Q4          | PxP              |
| 4. KtxP          | Kt-KB3           |
| 5. Kt-QB3        | P-QR3            |
| 6. B-QB4         | P-K3             |
| 7. P-B4          | P-QKt4           |
| 8. B-Kt3         | B-K2             |
| 9. P-K5          | PxP              |
| 10. PxB          | Kt-Q4            |
| 11. KtxKt        | PxKt             |
| 12. 0-0          | 0-0              |
| 13. Kt-B5        | BxKt             |
| 14. RxB          | Q-Kt3ch          |
| 15. K-R          | Q-K3             |
| 16. R-B3         | R-R2             |
| 17. B-KB4        | R-Q2             |
| 18. Q-Q2         | Kt-B3            |

19. R-K	R-B	White	Black
20. P-KR3	B-B4	<u>E. Antman</u>	<u>L. Kupersmith</u>
21. R-Q3	Kt-Kt5	1. Kt-KB3	P-Q4
22. R-QB3	P-QR4	2. P-B4	Kt-KB3
23. P-R3	Kt-R3	3. PxP	KtxP
24. R-Q3	Kt-B2	4. P-K4	Kt-Kt3
25. QxP	Q-B4	5. P-Q4	B-Kt5
26. B-Kt3	R(1)-Q	6. B-K3	Kt-B3
27. P-K6	PxP	7. B-K2	P-K3
28. BxKt	R-KB	8. 0-0	BxKt
29. R-KB3	QxR	9. BxB	Kt-B5
30. PxQ	RxP	10. Q-R4	KtxB
31. Q-R8ch	B-B	11. PxKt	Q-Q2
32. Q-B6	R-K2	12. Q-Kt5	Kt-Q
33. B-Q8	R(2)-KB2	13. Kt-B3	P-QB3
34. QxKP	Resigns	14. Q-Kt3	B-K2
		15. P-K5	0-0
		16. QR-Q	Q-B2
		17. B-Kt4	P-QKt4
		18. R-B3	P-QR4
		19. Q-B2	P-Kt5
		20. Kt-K4	P-R5
		21. Kt-B6ch	BxKt
		22. PxP	P-Kt3
		23. P-K4	P-K4
		24. P-Q5	Q-Kt3ch
		25. K-R	PxP
		26. PxP	P-Kt6
		27. PxP	PxP
		28. Q-B	Kt-K3
		29. PxKt	PxP
		30. P-R4	QR-B
		31. P-B7ch	K-Kt2
		32. Q-Kt5	RxP
		33. QxKPch	K-Kt
		34. BxP	Resigns

Game No. 1027 - Sicilian

White	Black
<u>E. Osbun</u>	<u>W. Browne</u>
1. P-K4	P-QB4
2. Kt-KB3	Kt-QB3
3. Kt-B3	Kt-B3
4. P-Q4	PxP
5. KtxP	P-Q3
6. B-KKt5	P-K3
7. Q-Q2	P-QR3
8. 0-0-0	P-R3
9. B-K3	B-Q2
10. P-B4	R-B
11. B-K2	P-QKt4
12. B-B3	Kt-QR4
13. Q-Q3	Kt-B5
14. B-B2	P-Kt5
15. QKt-K2	P-K4
16. Kt-QKt3	B-Kt4
RESIGNS	

AMERICAN OPEN, 1967

The following game won the best-played-game prize:

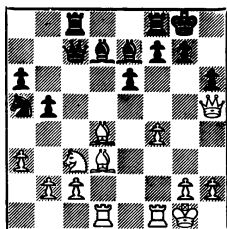
GAME No. 1028 - Reti

NORTHERN CALIFORNIA CHAMPIONSHIP

The following is a critical game of the tournament. White tries too hard to win in a very promising position.

Game No. 1029 - Sicilian

White	Black
<u>F. Thornally</u>	<u>J. Blackstone</u>
1. P-K4	P-QB4
2. Kt-KB3	P-Q3
3. P-Q4	PxP
4. KtxP	Kt-KB3
5. Kt-QB3	P-QR3
6. B-KKt5	P-K3
7. P-B4	P-R3
8. B-R4	Q-Kt3
9. P-QR3	B-Q2
10. Q-Q3	Kt-B3
11. B-B2	Q-B2
12. B-K2	R-B1
13. O-O	B-K2
14. QR-Q1	O-O
15. Q-Kt3	P-QKt4
16. B-K3	K-R1
17. B-Q3	Kt-QR4
18. P-K5	Kt-R4
19. Q-R3	PxP
20. QxKt	PxKt
21. BxP	K-Kt1



22. K-R1? ...  
 22. Kt-K4, threatening Kt-B6ch and maintaining control over QB5, is the obvious move.

22. ...	Kt-B3
23. QBxP	KxB
24. R-B3	R-KR1
25. R-Kt3ch	K-B1
26. B-Kt6	B-K1
27. B-R7?!	...

Ingenious but insufficient - If  
 27. ...RxB, 28. Q-Kt4.  
 27. ... QxP  
 28. R-Kt4 P-B4  
 29. RESIGNS

Erik Osbun follows the same variation with which he beat the same opponent two weeks earlier in the Central California Qualifying Tournament. As against David Blohm in another series of important games (see The Reporter, May-June 1967) it is a repeat performance.

Game No. 1030 - Ruy Lopez

White	Black
<u>E. Osbun</u>	<u>K. Grivainis</u>
1. P-K4	P-K4
2. Kt-KB3	Kt-QB3
3. B-Kt5	P-QR3
4. B-R4	Kt-B3
5. O-O	B-B4
6. P-B3	B-R2
7. P-Q4	P-QKt4
8. B-Kt3	Q-K2
9. R-K1	P-Q3
10. P-KR3	O-O
11. B-K3	B-Q2
12. QKt-Q2	K-R1
13. Kt-B1	PxP
14. PxP	Kt-QR4
15. B-B2	P-B4
16. P-K5	QPxB
17. PxKP	Kt-Kt1
18. Q-Q3	P-B4
19. PxPep	KtxP
20. B-Kt5	P-B5
21. Q-Q2	Q-Q1
22. QR-Q1	B-B3
23. Q-B4	Q-Kt3
24. Q-R4	P-R3
25. B-K3	Q-B2

26. B-B4                    Q-Kt2  
 27. Kt-K5                   BxKtP  
 28. Kt-Kt6ch               K-Kt1  
 29. Kt-K7ch                K-R1  
 30. Kt-Kt6ch               K-Kt1  
 31. R-K7                    Q-B6  
 32. RxPch                   KxR  
 33. QxPch                   K-Kt1  
 34. Kt-K7ch                K-B2  
 35. B-Kt6ch                Resigns

GOLDEN GATE CLUB, 1967

There are subtle differences between lines coming out of the Bishop's Opening and the Giuoco, and the two Knights. The same move with one move less or one move more on both sides can be a winner or a loser.

Game No. 1031 - Bishop's

White	Black
<u>P. Dahl</u>	<u>M. Goodall</u>
(Notes by Peter Dahl)	

1. P-K4	P-K4
2. B-B4	Kt-KB3
3. P-Q4	PxP
4. Kt-KB3	B-B4

Simplest is 4... P-Q4, 5.PxP B-Kt5 ch, 6. P-B3, Q-K2ch =.4...KtxP wins a pawn, but White has sufficient compensation in development.4... Kt-B3 leads to the two-knight defense or the Max Lange.

5. P-K5	F-Q4
6. PxKt	PxB

We reach a Max Lange type of position which I maintain is a lot better for White than the normal Max Lange - as we see in this game.

7. Q-K2ch	B-K3
8. PxP	R-Kt1
9. B-Kt5	Q-Q4

An old analysis gives 9...B-K2;

11. BxB, KxB!, 12. Kt-R4!, Q-Q4;  
 13. P-B4, Kt-B3!; 14. P-B5, P-Q6  
 15. Q-R3, Kt-Q5; 16. 0-0 and wins.  
 We don't see why 12. Kt-R4 should receive an exclamation mark. If 12. K-Q2 (or some other King move) The White Knight probably has to move back to the square it came from; then the question arises, where is White's advantage?

The text move follows an analogy to the Max Lange but allows the following fireworks: (Ed. note)

10. Kt-B3!?	Q-B4?
If 10...B-Kt5, 11.0-0-0, BxKt	
12. PxB, Kt-B3; 13.B-B6! Horowitz	
says 10... PxKt is best followed	
by 11.R-Q1, BxPch; 12.K-B)(analysis	
stops here). PxP 13. RxQ, P-Kt8	
(Q)ch 14. KxB, Q-Kt3ch; 15.K-Kt3	
if Kt-B3; 16.B-B6 if Kt-Q2, 16.	
KR-Q1 and I like White's game here.	

(My analysis

11. 0-0-0	RxP
12. Kt-K4	...

Pafnutieff suggests 12. P-KKt4! here since QxP loses to Kt-K4 and after 12...Q-Kt3, 13.Kt-Q5 is strong.

12. ...	Kt-Q2
13. P-KR4	P-B6
14. KtxB	PxPch
15. KxP	QxQKt
16. RxP	Q-R4
17. P-R3	Kt-B4
18. Q-K5!	

Stops 18...Kt-R5ch by 19.RxKt

18. ...	RxB
There is no better if 18...R-Kt1,	
19.Q-B6.	

19. PxR	R-B1
20. Q-R8ch	K-K2
21. Q-B6ch	K-K1
22. RxP	Q-Kt4ch
23. K-B1	Kt-Q2

24. R-R8ch	Kt-B1	see no better moves for Black
25. P-Kt6	B-Q4	after his 10th move. He cert-
26. Q-K5ch	Resigns	ainly didn't play badly. Per-
Interesting is the fact that I		haps the losing move is 4.B-B4!

JaBee Gee

Jerry G. Spann

We regret deeply to record the deaths of two old friends of chess in California, JaBee Cee of Sacramento and Jerry G. Spann of Oklahoma.

J. B. Gee, a dominant figure in Sacramento chess for many years, died December 30, 1967, from lung cancer, after a lengthy illness. Several times winner of the Sacramento City Championship, Gee was well known in Central California Chess League matches and in North-South matches where he represented the North nine times. His well-rounded game and aggressive style made him a worthy opponent for the best. In addition, he was a gifted simultaneous player. For several years, he edited a chess column in the Sacramento Union and also edited the Sacramento Chess News. He was a long-time secretary of the Capital City Chess Club during the days when his duties included carrying the club equipment to and from meetings in a large suitcase. Much of the success that chess has enjoyed in Sacramento and Central California is due to the pioneering efforts of J.B. Gee. Our condolences go to his wife Ann and their two sons, J.B. Jr. and Michael.

Jerry G. Spann of Norman and Oklahoma City, Oklahoma died on January 5, 1968, from cancer of the pancreas. A power in the U.S. chess world since 1956 when he staged the U.S. Open in Oklahoma City, Jerry was elected to the Presidency of the U.S.C.F. in 1957 and brought peace to that organization. After his term as President, he became international Vice-President and used his good offices many times to settle down the stormy international chess field. Jerry was a football player, 1929-1933, at the University of Southern California. He was a member of the North team and a great friend of chess in California in general, and a friend of many individual chessplayers in California in particular. In 1957, at the opening of the U.S. Women's Championship in Beverly Hills, Mr. Spann came out in order to get acquainted, and made a talk which turned out to be a major policy speech. He set out policies which guided the U.S.C.F. to new successes and made failure a forgotten word. His was a personal touch, and he was as well known in California as in Oklahoma City or New York, and in Moscow as well known as in Zurich. Jerry Spann's passing leaves a big void in our world of chess. We sincerely extend our condolences to his wife Alice and their lovely daughters.

TASKS: GAMES CHESSPLAYERS PLAY -- I

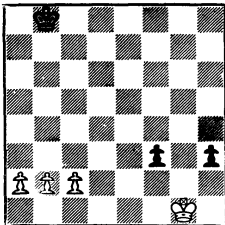
From Zeno the Rat (The California Chess Reporter, Vol. III, No. 4) to Grandmaster Matulovic, who has given a new interpretation to the J'Adouble rule, chessplayers have been known to play special little games of their own -- off the chessboard as well as on it. It is indeed unfortunate that some of the most memorable things about grandmasters are their feuds and tantrums.

Neil T. Austin has pointed out a specific example of this lack of geniality in reference to the Lucena Position. In the last issue, we asked our readers if "building a bridge" is necessary only for a Knight Pawn. None of the endgame compendia we know of says so -- but the position is always shown with the KtP (with the single exception of Lucena's!). Austin calls our attention to another peculiarity -- Nimzovitch and Tarrasch give different solutions, apparently on purpose. Tarrasch insists that the white rook must make the bridge on the fifth rank (R-K1ch followed by R-K5 instead of R-K4, stating flatly that the "solution shown in other books is incorrect." Nimzovitch and Tarrasch translated their personal squabbles into endgame analysis. Actually Nimzovitch is correct in saying that although both moves win, R-K5 really delays things one move, since Black's reply K-Q3 is met equally well by R-K4 or K-B2. Nimzovitch spoils his case, however, by claiming that the K-B2 line (Tarrasch's) is not "convincing." How is a forced line "not convincing?"

The point of this introduction is not to launch into a psychological analysis of chessplayers' foibles, but to offer a new interpretation of the game as a series of "sub-games" -- of which the Lucena Position is an example. We contend this way of looking at chess (as following articles may make clear) explains a lot about problems and problem-solving (of which programming a chess computer is a minor example).

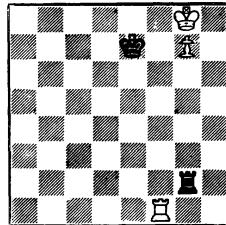
"Games Chessplayers Play"

No. 267



White to play. Who wins?

No. 286



Analysis by Tarrasch

THIRD ANNUAL PENINSULA OPEN

Date: April 27-28, 1968. 5-Round Swiss.  
Place: LERA (Lockheed) main auditorium, Sunnyvale.  
Information: James E. Hurt, LERA Chess Club,  
P. O. Box 451, Sunnyvale, Calif. 94088  
Registration: 9:00-11:00 am, Saturday, April 27  
First Round: Noon, Saturday, April 27.  
Entry Fee: USCF Open Division...\$10  
CFNC Division..... \$ 7  
Juniors (16 and under). \$ 3  
First Prize: \$150  
Director: George Koltanowski

JOHN GILBRETH MEMORIAL OPEN

Date: May 17-19, 1968. 6-Round Swiss.  
Place: Municipal Recreation Center  
350 E. Ocean Blvd., Long Beach, Calif.  
Entry Fee: \$13 before May 13, \$15 thereafter.  
Juniors under 18: \$9 before May 13, \$11 thereafter.  
Guaranteed Prizes: \$300 First, \$150 Second, \$75 Third.  
Director & Information: Gordon Barrett  
12536 Daryl Avenue  
Granada Hills, Calif. 91344