

80 Chess Clubs  
And Organizations

CIRCULATION  
457 Chess Players

83 Chess Publications  
and Libraries

# THE CENTRAL CALIFORNIA CHESS VOICE



CENTRAL CALIFORNIA'S CHESS MAGAZINE  
and  
OFFICIAL ORGAN  
of the  
CENTRAL CALIFORNIA CHESS ASSOCIATION  
(An Authorized Affiliate  
of the United States Chess Federation)

MARTIN E. MORRISON . . . .  
Editors  
. . . . . ELWIN C. MEYERS

October-November  
Whole No. 17



ANOTHER RECORD-SMASHING EVENT—THE CENTRAL CALIFORNIA CHESS ASSOCIATION'S SECOND ANNUAL USCF ADULT AND JUNIOR CHESS CHAMPIONSHIP OF CENTRAL CALIFORNIA DREW 123 PLAYERS, MAKING IT THE LARGEST ALL-USCF TOURNAMENT HELD IN CENTRAL CALIFORNIA SINCE THE 1961 US OPEN IN SAN FRANCISCO. World Junior Chess Champion and Senior Master Julio A. Kaplan, with a perfect 4-0 score, won the distinction of becoming the 1970 Adult Chess Champion of Central California. Mr. Kaplan is pictured (cen.) receiving his \$100.00 prize check from Martin E. Morrison (l.), CCA Chairman and United States Chess Federation Director, who directed the tournament. At the far right is Mark B. Gasse, First-Through-Third Class B winner. To Mr. Morrison's immediate left is Casey O'Brien, President of the San Jose Chess Club, host of the 17-18 July CCA's USCF Class Chess Tournament at San Jose, another record-breaking tournament of 105 players. The site was the Meek Estate Mansion in Hayward, whose elegant portals and entranceway are shown. Details will be found in the "News" section of this issue. (Photograph courtesy of Richard R. Shorman, CCA League Director.)

Editors  
Central California  
Chess Association  
Post Office Box 1622  
Oakland, California 94604  
Telephone: (415) 582-1973

Send change of address notices, undeliverable copies, orders for subscriptions, and other mail items to the magazine's mailing address above. POSTMASTER: SEND P. O. D. FORM 3579 TO THE MAGAZINE'S MAILING ADDRESS ABOVE.

Chess Voice is published bimonthly. EACH MEMBER OF THE CCCA, I. E., EACH PERSON WHO IS CERTIFIED BY THE APPROPRIATE OFFICER OF A CHESS CLUB OR ORGANIZATION AFFILIATED TO THE CCCA (LISTED ON P. 15) TO BE A MEMBER OR OFFICER OF THE AFFILIATE, receives mailed to his home a Chess Voice subscription, paid for in connexion with the payment of the affiliate's CCCA assessments in a distinct, voluntary, and independent act on the part of each individual member, the relation of subscriber being clearly understood and fully agreed to. Known office of publication (not the magazine's mailing address): Campus Bancroft Building, Room 206, 2440 Bancroft Way, Berkeley, California 94704. Second-class postage paid at Berkeley, California.

The opinions expressed in Chess Voice are those of the Editors or of the respective contributors. They do not necessarily constitute an official policy of the CCCA or any of its affiliates.

NONMEMBER SUBSCRIPTIONS: \$2.00 per annum.

ADVERTISEMENTS: 5¢ per word per issue on any subject (classified advertisements), \$5.00 per eighth page per issue, \$20.00 per insert per issue (this cost is more than one cent cheaper per page for mailing tournament circulars, etc., than postage costs alone).

\*\*\*CCCA OFFICERS AND OFFICIALS\*\*\*

CHAIRMAN . . . . .	MARTIN E. MORRISON
Post Office Box 1622, Oakland, CA 94604	582-1973
SECRETARY . . . . .	SALEH MUJAHED
Post Office Box 1622, Oakland, CA 94604	(582-1973)
TREASURER . . . . .	LEONARD F. TROTTIER
5315 MacDonald Avenue, El Cerrito, CA 94530	233-1595
LEAGUE DIRECTORS . . . . .	HAROLD L. BARNETT
677 Caliente Drive, Livermore, CA 94550	447-4588
3546 Lincoln Avenue, Oakland, CA 94602	FRANK V. LEFFMAN
EDITORS . . . . .	533-3166
Post Office Box 1622, Oakland, CA 94604	MARTIN E. MORRISON
582-1973	ELWIN C. MEYERS
Post Office Box 1622, Oakland, CA 94604	(582-1973)
PUBLICITY DIRECTOR . . . . .	RICHARD R. SHORMAN
	782-5029

Area Vice Chairmen: Frederick J. Ulrich, Sergius von Oettingen (Sacramento-Stockton Area), Lee Henderson (North Bay Area), Jerome Friedman (Central Bay Area), William T. Adams (South Bay Area), Chris A. Fotias (Central Valley Area).

CCCA Championship Administrator: Hans Poschmann.

Standing Committees. Clock Leonard F. Trottier, Chairman, John R. Moore, Jr., Martin E. Morrison. Tournament and Club Relations: Martin E. Morrison, Chairman, Elwin C. Meyers (Standing Tournament Subcommittee); Harold L. Barnett, Everett L. McNally (Club Coordinator).

CSCF Directors: Martin E. Morrison (At-large, Northern California; Member, Standing State Tournament Calendar and Standing Tournament Committee, Northern Section), Gunnar H. Rasmussen (Redwood Empire Area; Chairman, Board of Directors).

USCF Directors: William T. Adams, William Kennedy, Elwin C. Meyers, Martin E. Morrison (Member, Tournament Director Certification Committee; Chairman, Tournament Directors Guidebook Subcommittee), E. H. Mueller, Frank M. Olvera, Sr., Robert L. Oylar, Gunnar H. Rasmussen, Sergius von Oettingen.

Members should feel free to contact their officers and officials regarding any aspect of chess business. They will be happy to serve you. Of course, additional help is always needed. Offer your help to your CCCA.

\*\*\*THE COMPLETE OFFICIAL STATE TOURNAMENT CALENDAR  
FOR NORTHERN AND CENTRAL CALIFORNIA  
OFFICIALLY SANCTIONED BY THE CALIFORNIA STATE CHESS FEDERATION\*\*\*

Chess Voice is designated to publish "The Complete Official State Tournament Calendar For Northern and Central California, Officially Sanctioned by the California State Chess Federation" and has charge of collecting data for the calendar, "to avoid competition, publicize, and promote attendance." TOURNAMENT ORGANIZERS SHOULD SUBMIT TO THE EDITORS AS SOON AS POSSIBLE TENTATIVE OR DEFINITE TOURNAMENT DATES FOR INCLUSION IN THE OFFICIAL STATE TOURNAMENT CALENDAR. We cannot be responsible for including tournaments of which we have not been notified. Chess Voice is also designated to "coordinate tournament dates." In carrying out this function, the Editors, in case of date conflicts, will contact the organizers involved in an effort to find a resolution agreeable to all parties. In general, precedence will be given to established annual tournaments and those of which we were notified first. USCF tournaments of the CCCA and its affiliates are capitalized. At these tournaments CCCA California State Chess Championship Qualifying Points will be awarded. To obtain them, a player must produce an unexpired CSCF membership card or join the CSCF upon registration at the tournament.

\*

2-4 OCT.	CEN. CALIF. OPEN	USCF	SACRAMENTO
9 OCT. & 9 FOL. FRIS.	BERKELEY CC'S 6-RD. RANDOM (no Qual. Pts.)	USCF	BERKELEY
10-11 Oct.	No. Calif. Championship	USCF	San Francisco
17-18 Oct.	Redwood City Open	CFNC (& USCF)	Redwood City
18-19 OCT.	FIGHT OF THE BUMBLER B (no Qual. Pts.)	USCF	MONTEREY
24-25 Oct.	1st Pathfinder Team T.	-	Freemont
NOV.	SONOMA CO. CHAMPIONSHIP	USCF	SONOMA CO.
14-15 NOV.	74TH ANN. SAN FRANCISCO OPEN CHESS T.	USCF	SAN FRANCISCO
26-29 Nov.	American Open	USCF	Santa Monica
19-20 DEC.	OAKLAND CC'S 5TH ANN. SAN FRANCISCO BAY AREA AMATEUR OPEN CHESS CHAMPIONSHIP T.	USCF	OAKLAND
Jan. or Feb.	1970 CFNC Championship, CFNC/USCF Open Qualifier, and Jr. Championship Playoffs	CFNC (& USCF)	?
2 JAN.	CCCA'S REGIONAL 1-DAY ROUND ROBIN CHESS T.	USCF	WALNUT CREEK
22 JAN. & 5 FOL. FRIS.	MASTER/EXPERT OPEN (no Qual. Pts.)	USCF	BERKELEY
29 JAN. & 5 FOL. FRIS.	AMATEUR OPEN (no Qual. Pts.)	USCF	BERKELEY
12-14 FEB.	CCCA'S REGIONAL GOLDEN BEAR PREMIER CHAMPIONSHIP	USCF, CSCF	BERKELEY
13-14 FEB.	CCCA'S REGIONAL GOLDEN BEAR CLASS CHAMPIONSHIPS	USCF	BERKELEY
MAR.	OAKLAND CC'S 4TH ANN. 4-MAN SECTIONAL CHESS T.	USCF OR CFNC	OAKLAND
7-12 Mar.	National Open	USCF	Sparks
27-28 MAR.	CCCA'S USCF REGION VIII MASTER/EXPERT CHAMPIONSHIP & AMATEUR CHAMPIONSHIP	USCF/CSCF & USCF	FRESNO
2-4 APR.	7TH ANN. PRE-EASTER VISALIA AMATEUR OPEN CHESS T.	USCF	VISALIA
late Apr.	5th Ann. Peninsula Open	CFNC (& USCF)	Sunnyvale
MAY	CCCA'S REGIONAL USCF CLASS T. AT ?	USCF	?
MAY	?SACRAMENTO CITY CHAMPIONSHIP	USCF	SACRAMENTO
22 MAY	?DVI'S USCF SEMI-OPEN/INVITATIONAL T.	USCF	TRACY
JE.	7TH ANN. MONTEREY INT. OPEN CHESS T.	USCF	MONTEREY
EARLY JE.	LIVERMORE OPEN	USCF	LIVERMORE
mid Je.	74-Rd. "Tornado" Rating T.	USCF	San Francisco
3-5 July	8th Ann. Arthur B. Stamer Memorial T.	USCF	San Francisco
4 Jul.	5th Open Air Chess Festival	-	San Bruno
17-18 JUL.?	CCCA'S REGIONAL USCF CLASS CHESS T. AT ?	USCF	?
31 JUL.-1 AUG.?	CCCA'S 3RD ANN. ADULT & JR. USCF REGIONAL CHESS CHAMPIONSHIP OF CEN. CALIF. (triple Qual. Pts.)	USCF	?
Aug.	Oakland CC's 8th Ann. Summer T.	CFNC	Oakland
Aug.	3rd Ann. Chabot Open Chess Championship T.	CFNC (& USCF)	Mt. Eden
15-28 Aug.?	US Open Chess Championship	USCF	Ventura

(Continued on page 9.)

\*\*\*NEWS\*\*\*

Record-Breaking 123 Players at CCCA's Championship of Central California

In the sumptuous grounds and elegant mansion of the Meek Estate, Hayward, the CCCA's Second Annual USCF Adult and Junior Chess Championship of Central California was held on 8-9 August. The tournament attracted the largest field yet for an all-USCF tournament in this area—123 players. Tournament directors Martin E. Morrison and Elwin C. Meyers directed the unusually large number of participants, 26 Masters Experts, and Class A's; 38 Class B's; and 59 Class C, D, and E's.

Winning the title of 1970 USCF Champion of Central California and \$100 was Julio A. Kaplan, former World Junior Champion. First A was Alan LaVergne (\$25), followed by Harold Edelstein, Benjamin L. Gross, and John A. Wallan, who split the Second-Through-Fourth Class A prize and \$10. Mark B. Gazze, Charles A. Maddigan (an up-and-coming USCF Junior), and Norman Rosen tied for the top Class B spot and shared \$135. With a clear 5-0 Lee Henderson captured the First Classes C/D/E prize money of \$100. Leonard F. Petty, Jr., placed second in that division (\$25), and Alfred Hansen topped the large Classes D/E field.

1970 USCF Junior Champion of Central California was Craig N. Barnes, aged 15, who scored an excellent 2-2 in the Master/Expert/Class A Division on his return from Los Angeles, where he placed very high in the California Junior Championship. Other junior winners, receiving book or magazine awards were: Marcos B. Costa (First B Junior), Michael G. Vatcher (Second B Junior), William Noble (First C/D/E Junior), and Richard S. Anderson (First D/E Junior). Bruce G. Boer won a special award, a chess set provided by CCCA Publicity Director Richard R. Shorman, for the youngest player in the tournament.

\*

Acers, Jones Tie 105-Player CCCA San Jose Tournament

The CCCA's USCF Class Chess Tournament at San Jose, 18-19 July, was outstanding in two respects: the record number of players involved (the largest all-USCF tournament in the area until the CCCA's Championship of Central California, reported above) and the more-than-friendly hospitality of the host San Jose Chess Club. Not only were club president Casey O'Brien, club treasurer E. H. Mueller, and club trustee William T. Adams (also a CCCA Vice Chairman) constantly on hand for assistance, but also Mrs. Adams and Mrs. Crofut continuously ministered to the hunger and thirst of the players with coffee and homemade blueberry muffins and plum cake.

The number of players, 105, so exceeded the expected number that tournament directors Martin E. Morrison and Elwin C. Meyers increased the prize fund by almost one-half. Jude F. Acers, a USCF Master from San Francisco, tied for first place in the Master/Expert/Class A Division with C. William Jones, splitting \$75. Horst Mohrmann and Alan LaVergne tied for First A and \$50. Roger Bonilla and Robert Sferra tied at 4-0 for First B; each received \$55. The Third Class B prize (\$15) was shared by Stan J. Flowerdew, Mark B. Gazze, Richard G. Gordon, Erwin W. Hamm, Robert W. Howard, Ben Jansen, and Bradley J. Mills. Top honors in the Classes C/D/E Division were shared by Dennis L. Myers and David Bloomquist (\$50 each), and First Classes D/E was shared by Christopher Black and Alfred Hansen (\$12.50 each).

\*

Menas, Maddigan, Bloch, Howard Top CCCA Concord Class

Held on 5-6 September at the Concord Senior Citizens Center, quarters of the Concord Chess Club, the CCCA's Summer USCF Class Chess Tournament at Concord saw Borel Menas, an Expert from San Francisco, win top honors with 3½-½. Tying for First-Through-Fourth Class A were Craig N. Barnes, a rapidly-improving 15-year-old, Garret Boer, Don Hoekman, and Horst Mohrmann. Another rising junior player, Charles A. Maddigan, captured First Class B with 3½-½. Following at 3-1 were W. Tom Heaton, Marc McNow, Flynn L. Penoyer, and Frederick J. Ulrich. Douglas Bloch and Robert W. Howard tied at 3½-½ for First Classes C/D/E, with Robert R. Ehnke and Stuart A. Warren at 3-1 sharing First Classes D/E. Martin E. Morrison directed the 43 player event.

A special Five-Minute Speed Tournament was held on Saturday evening after the second round. Craig N. Barnes, with a phenomenal 9-1 took the top A place, David Cavallo, top B, and William Noble, top C/D/E.

\*

Fremont CC to Sponsor Olympiad-Like Team Tournament

You may not be able to play on the national team at the Chess Olympiads, but the Fremont Chess Club will make it possible to have a similar event in condensed scopt and of slightly lower caliber right here in the Bay Area. In cooperation with the CCCA, the club will sponsor the First Pathfinder Team Tournament on Saturday and Sunday, 24-25 October, at the Fremont Central Park Community Center. Any team of four players may enter upon payment of the \$10 team fee. The Olympiad setup of Round Robin preliminaries on Saturday and Finals on Sunday will be utilized.

A trophy and chess clock will be awarded to each final division winner (Class A, B, C, D, and E), and a chessboard, a \$20 value, will be given for the best board scores in the finals. For further information and registration, which must be made in advance, to the Fremont Chess Club, c/o Hans Poschmann, 4621 Seneca Park Avenue, Fremont 94538. CCCA members and affiliates are urged to support Mr. Poschmann's innovative attempt to introduce a European-form tournament into this country.

DVI Hosts CCCA Banquet

The CCCA's first banquet was hosted by the DVI Chess Interest Group on Friday, 21 August, at the Deuel Vocational Institution, Tracy. After acquainting themselves with the congenial officers of the Group, twelve CCCA members and 23 Group members proceeded to the dining area for a (free) meal of steak and all the trimmings.

After the banquet the Five-Minute Speed Chess Championship of Central California was held in the club's playing quarters. The event was directed by Martin E. Morrison, CCCA Chairman, and saw David J. Forthoffer, of Berkeley, capture the book prizes and the title of Speed Champion, with a 5-0 score. Also receiving a 5-0 score, but losing on tie-breaking points the books and title, were James B. Shearer, of Livermore, and Craig N. Barnes, of Berkeley. Top DVI player, with a 4-1 score, was Harold L. Chappel.

The CCCA wishes to extend its thanks to the DVI Chess Interest Group for a most memorable experience.

Berkeley CC to Hold USCF-Rated Six-Round Random

Beginning 9 October, the Berkeley Chess Club will hold its Six-Round Random Tournament. The form of the tournament is unusual in that each player will have a choice of ten Friday nights in which to play six games. Only those players who present themselves on a particular Friday night will be paired that night. The tournament is open to everyone, and will be free for those who are or will become Berkeley Chess Club members, \$1.50 for nonmembers. The club quarters, and site of the tournament, are the Palm Room, Berkeley Central YMCA, 2001 Allston Way, Berkeley. Registration may be made at the site before the beginning of any round (8:00 p.m.).

\*\*\*AFFILIATE NEWS\*\*\*

If your affiliate is not listed, we have not received any material concerning your activities. Please keep us informed of all your events for publication.

**BERKELEY CHESS CLUB . . .** Got under way on 28 August with a Ten-Second Rapid Transit Tournament. Bruce Haisfield topped the field of 11 players with a 9-0 score, winning him a parchment certificate signed by IGM Isaac Kashdan and a magazine award. Following at 7-2 were William Fleissner and Kent McGillicuddy. The club is now engaged in a 30-30 tournament.

**CONCORD CHESS CLUB . . .** Hosted a Simultaneous Exhibition by USCF Master Jude F. Acers. Preceding the exhibition, Mr. Acers gave one of his inimitable lectures. An amazing 29 players participated. Mr. Acers accepted only two losses. The club wishes to expand its membership and extends an invitation to Contra Costa residents to visit. (See page 15 for meeting information.)

**DVI CHESS INTEREST GROUP . . .** Is very eager to expand its club library. CCCA members are requested to donate any spare books they might have.

**MONTEREY PENINSULA CHESS CLUB . . .** Michael R. Ewell has won the club's monthly rapid transit tournament for the last four months, netting him a USCF pin. The club now meets at the new location of the Casa Alvarado Chess Center, 467 Alvarado Street, Monterey. The club is now engaged in its Club Championship Tournament.

**OAKLAND CHESS CLUB . . .** To get new blood in the club, all former club officers have resigned.\* New officers elected 7 August are: Michael Weber (President), Jerry Gerhardt (Secretary), Stephen G. Quen (Treasurer), Charles A. Maddigan and Gary T. Weber (Tournament Directors), and Craig N. Barnes (Publicity Directors). All those players with claims for overdue prizes should immediately contact one of the new officers. The club is now completing its Championship Playoffs. \* Cor. 11:19.

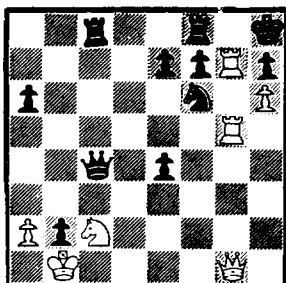
**PLEASANT HILL CHESS CLUB . . .** is now forming and was made an affiliate of the CCCA at the last meeting. Serving on the Ad Hoc Organizing Committee are: Betty Alaime, Saleh Mujahed, Robert Nace, and Charles Vail. The club is interested in getting charter members. See page 15 of this issue for meeting time and place.

\*\*\*\*\*  
The seventh installment of the Tournament Direction Guide and Manual will contain examples of the application of FIDE Laws and Interpretations and USCF Tournament Rules from actual tournament play. If you know of a rules dispute at a tournament, please send to the Editors a brief description of the dispute and its disposition by the tournament director, if known.

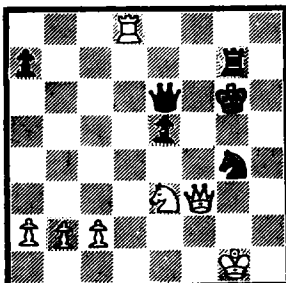
\*\*\*MIDDLEGAME MANIA\*\*\*

By RICHARD R. SHORMAN, CCCA Publicity Director

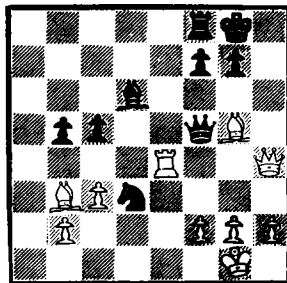
No. 1-A  
EASY  
White to play.



No. 2-A  
MEDIUM  
White to play.



No. 3-A  
DIFFICULT  
Black to play.



No. 1-A: White to play repulses Black's threats with a single shot that beautifully combines attack and defense.

No. 2-A: White to play forces the win of a piece.

No. 3-A: Black to play finds a surprising way to exploit White's poorly guarded first rank that nets a piece and wins the game.

\*

Solving Contest: October-November

Solutions (the key moves of the winning continuation) must be received by Mr. Sherman, 27858 Tampa Avenue, Hayward 94544, by 20 October. Mr. Sherman will judge all entries received by that date and determine the winner.

The prize for this contest will be James R. A. Schroeder's International Chess Tournament: Hastings-1934/35. This book is another in the series of excellent studies of epoch-making tournaments by Mr. Schroeder, a USCF-rated Expert. The book includes a complete crosstable, a table of scores after each round, a table of game references for each round, thumbnail biographies of the participants, two cartoons, 45 games, 73 diagrams, annotations, an opening index, and anecdotes. The tournament field included Dr. Max Euwe, Jose Capablanca, and Mikhail Botvinnik. A priceless item for any player's library.

\*

Winner of the August-September Contest

Only one set of correct solutions was submitted, that by Charles R. Nevins, of Fairfield, a member of the Vallejo Chess Club. Mr. Nevins was sent his prize, Dr. Reuben Fine's monumental Basic Chess Endings. Our congratulations to Mr. Nevins.

\*

Solutions to Last Issue's Problems

No. 72: KN-Q5. No. 73: B-K5. No. 74: 1...N-K81; 2 P-B3, NxBP!; 3 PxN, PxP; 4 K-Q2, K-N6; 5 E-N6, K-N7; 6 K-B3, P-B7; 7 BxP, KxB; 8 KxP, K-N6; 9 K-R4, KxP.

\*\*\*INSTALLMENTS OF TD GUIDE AND MANUAL RELEASED; OTHER CCCA PUBLICATIONS\*\*\*

Installments I, II, and III of the Tournament Direction Guide and Manual by Martin E. Morrison and Elwin C. Meyers has been published and mailed to advance subscribers. These installments contain "A Complete Compendium of All Interpretations Made by the FIDE (World Chess Federation) for the 'Laws of the Game of Chess' Currently in Force 1952-1969," compiled by Martin E. Morrison. These obligatory, but little known regulations, will answer many common tournament problems.

Only a few copies are still available at the pre-publication price of \$1.50 (50¢ per installment), to offset the cost of publication. With this initial subscription you will automatically receive future installments at 50¢ each unless you decide to cancel at any time.

The following items in the CCCA Publications Series are currently available:

NO. 2: "How to Organize a New Chess Club," by Richard R. Shorman, revised by Martin E. Morrison, 2 pp. (15¢).

NO. 3: "Interpretations Made by the Permanent Commission of the FIDE for the Laws of the Game," translated by Martin E. Morrison, 2nd Ed. with References to the FIDE Laws Article Numbers, 4 pp. (15¢).

NO. 4: "Rules for Five-Minute Speed Tournaments" by Sergius von Oettingen, revised by Martin E. Morrison, 1 p. (10¢).

NO. 5: Tournament Direction Guide and Manual, by Martin E. Morrison and Elwin C. Meyers, Installments I-III, 22 pp. (\$1.50).

Send orders to the Editors (address on p. 2). The small cost is only to offset

\*\*\*UNDERSTANDING CHESS LAWS AND TOURNAMENT DIRECTION:  
A LETTER ON TIME FORFEITURE TO FIDE\*\*\*

By MARTIN E. MORRISON

Member, USCF Tournament Director Certification Committee

Questions and comments from readers on chess laws and tournament direction are welcomed. Contact the columnist at the address or telephone number given on page two of this issue.

\*

My last two columns have dealt with the opinions of various tournament officials across the country on the critical matter of time forfeiture (Laws of Chess, Articles 17.1 and 19b/7). So much disagreement persists in this vital area that an official FIDE (World Chess Federation) interpretation would seem not only welcome, but even a necessity. To this end, having obtained prior permission, I have submitted the following letter to FIDE President Folke Rogard for consideration at the 1970 FIDE Congress, to be held in August of this year. The three opposing positions expressed during the examination of the problem in Chess Voice have each been impartially included, as much as possible in the words of their respective proponents, along with the wording of one interpretation proposed.

"With the encouragement of FIDE Vice President for Zone 5 (USA), Mr. Fred Cramer, and upon your own most kind invitation (in your letter dated 9 February 1970), I should like to submit to the Permanent Commission of the FIDE for the Laws of the Game a question which has been of especial concern to tournament directors and players of this country, including International Grandmaster Larry Evans and Isaac I. Kashdan, the latter an FIDE Judge as well. I am sure that other affiliated federations have had to deal with the problem also. An official interpretation would be most welcome and, if the matter is deemed of sufficient import, the question might be taken up by the General Assembly, as you indicated.

"The question concerns the implementation of Articles 17.1 and 19b) of the Laws, especially in the case of a large tournament with a limited number of tournament officials. In such a situation, some directors are of the opinion that losses for failure to play the prescribed number of moves in the given time' should be imposed by tournament directors only on the basis of a claim made by a player, and that the tournament director on his own should not interfere in time losses unless a claim is made by a player. They argue that since in a large tournament a director 'cannot guarantee to be able to oversee every time difficulty,' it is fairer to impose time losses only on the basis of a player's claim.

"At the other extreme, other directors maintain: 'In the Laws of Chess it is clear. It is not implied that a player should make a claim. It says the game is lost by the player who fails to make the prescribed number of moves in the given time. It says the Tournament Director must: establish that the prescribed time limit has not been exceeded.' This opinion places stronger emphasis on the meaning of Article 19b).

"Between these two extremes, still other directors take the position that time control is a factor of procedure, not of a player's skill, and that in order to insure as much uniformity—and therefore fairness—as possible in such a procedural matter, it is better 'to have two checks, the tournament director and the player.'

"Obviously the matter needs clarification, so that the FIDE Laws may be of greater service to all tournament directors. We shall take here no position on the three possible opinions outlined above by quoting their proponents. One possible interpretation along the following lines has been suggested: 'In regard to his responsibility "to establish that the prescribed time limit has not been exceeded by the players (Art. 19b/7)," the tournament director, in those tournaments in which the number of players is great and the number of officials is small, may opt, with proper advance notice, to share this responsibility with the player by requiring that the player must claim a win on time and must produce a scoresheet which, upon verification by the director, proves that the player's opponent failed "to play the prescribed number of moves in the given time (Art. 17.1)." This option shall not be available in an FIDE International Tournament or in any tournament of less than 24 players in which FIDE titleholders participate."

Hopefully the Commission will consider the question fully and adopt an interpretation which will help tournament officials to apply the relevant Articles correctly.

NEXT ISSUE: The USCF's consideration of the letter at the Tournament Directors' Workshop (held in conjunction with the US Open, 10-11 August) and the FIDE's action at its September 1970 Congress in Siegen, West Germany.

\*\*\*BUSINESS PROCEEDINGS OF THE CCCA\*\*\*  
 By SALEH MUJAHED  
 CCCA Secretary



A regular meeting of the CCCA was held on Friday, 11 September 1970, in the Palm Room of the Berkeley Central YMCA, 2001 Allston Way, Berkeley. The meeting was called to order at 8:10 p.m. by the Chairman, Martin E. Morrison.

The total attendance for the meeting was as follows: Elwin C. Meyers (Berkeley CC); Hans Poschmann (Fremont CC); Paul Masgalajian, Richard R. Shorman (Hayward CC); Harold L. Barnett, Wesley A. Nelson (Livermore CC); Craig N. Barnes (Oakland CC); Leonard F. Trottier (Richmond CC); Martin E. Morrison (UC CC); Saleh Mujahed (Walnut Creek CC). Eight of 34 affiliates, 10 members.

The Chairman read the following change of site order. "30 August 1970. Attention: All CCCA affiliates. As the announced site of the Friday, 11 September, general membership meeting will not be available because of an unexpected emergency, I am hereby, in accordance with Article V, Section i, of the CCCA Bylaws, changing the site of the meeting to the Berkeley Chess Club, Palm Room, Berkeley Central YMCA, 2001 Allston Way (corner of Allston Way and Milvia Street), Berkeley. The time of the meeting remains 7:30 p.m. Two very important items of business will be on the agenda: adoption of rules for the CCCA 1970-71 League and the election of a League Director. Awards for the CCCA 1970 USCF Summer League will also be presented. Please notify your members of the change in site as soon as possible. Signed, /s/ Martin E. Morrison, Chairman, CCCA."

It was adopted by general consent that the minutes of the previous (10 July) meeting be approved as published in Chess Voice, the CCCA's official organ.

The special order of business for the meeting, the consideration of the Report of the Ad Hoc Open Committee of the CCCA 1970-71 League Rules, was postponed until the end of the routine business.

It was moved by Mr. Mujahed and adopted by general consent THAT THE PLEASANT HILL CHESS CLUB, UPON THE APPLICATION OF SALEH MUJAHED, MEMBER OF THE CLUB'S AD HOC ORGANIZING COMMITTEE, BE AFFILIATED TO THE CCCA.

Mr. Morrison reported that the Berkeley YMCA Chess Club had been renamed the Berkeley Chess Club.

The Treasurer, Mr. Trottier, gave the following  
 REPORT OF THE TREASURER OF THE CCCA  
 FOR THE PERIOD 10 JULY TO 8 SEPTEMBER 1970  
Receipts.

Balance on hand 10 July 1970 .....		\$ 54.49
Bimonthly assessments of affiliates .....	\$ 71.30	
Fines for late assessment payments .....	3.60	
USCF memberships received .....	40.00	
Tournament Subcommittee Fund returned* .....	75.00	
Charter use .....	10.00	
Clocks sold .....	265.41	
Miscellaneous .....	4.00	429.31
		<u>\$528.80</u>

Disbursements.

USCF memberships transmitted .....	\$ 40.00	
Editors' expenses .....	150.00	
CCCA Championship expenses .....	10.00	
Postage and insurance on clocks .....	2.30	
Clock sales retained for new shipment .....	<u>200.00</u>	\$402.30
Check no. 158 cancelled as uncashed .....		1.25
Balance on hand 8 September 1970 .....		167.75
Total .....		<u>\$528.80</u>

\*\$15.00 was returned to the treasury by the CCCA Tournament Subcommittee after this report was drawn up. The full \$90.00 of the loan has now been paid off. CCCA membership on 8 September 1970: 341.

The report was adopted by general consent.

Mr. Morrison, reporting for the Editors on the question of the USCF Junior Membership Campaign referred to them, moved the adoption of the following resolution: THAT THE EDITORS BE GIVEN POWER TO NEGOTIATE A USCF JUNIOR MEMBERSHIP CAMPAIGN IN CONSULTATION WITH MR. WALLAN; THAT THE EDITORS BE EMPOWERED TO AUTHORIZE UP TO \$25 IN CCCA FUNDS TO SUPPLEMENT MR. WALLAN'S DONATION. The resolution was adopted unanimously.

The Chairman of the Standing Clock Committee, Mr. Trottier, gave the following report, which was adopted by general consent. Clocks sold \$265.41; clock sales re-



tained for new shipment \$200.00, postage and insurance \$2.30 (total \$202.30); profit on clocks sold \$63.11, with 20 clocks unsold.

It was adopted by general consent THAT FREDERICK J. ULRICH BE RECLASSIFIED AS AREA VICE CHAIRMAN, SACRAMENTO-STOCKTON AREA.

It was adopted by general consent THAT THE CCCA AUTHORIZE THE TREASURER TO SHARE THE COST OF THE P. O. BOX WITH THE BERKELEY CHESS CLUB BEGINNING 1 OCTOBER 1970, THE PREVIOUS RESOLUTION ON THIS MATTER BEING HEREBY REPEALED.

The special order of business for the meeting was then taken up. Mr. Morrison, reporting for the Committee, moved the adoption of the "CCCA 1970-71 League Rules" reported out by the Committee. The report was debated thoroughly, amended, and finally adopted as follows: /COPY ON FILE/. It was moved by Mr. Meyers and adopted by general consent THAT THE CHAIRMAN BE EMPOWERED TO MAKE ANY MINOR CHANGES IN THE LEAGUE RULES JUST ADOPTED TO PRESERVE CONTINUITY BEFORE PRESENTING THEM TO THE LEAGUE DIRECTOR.

It was adopted by general consent that the meeting recess at the call of the Chairman. The Chairman declared the meeting recessed at 10:50 p.m. and called it to order again at 10:55 p.m.

It was moved by Mr. Meyers and adopted unanimously THAT FRANK V. LEFFMAN AND HAROLD L. BARNETT BE ELECTED LEAGUE DIRECTORS.

It was moved by Mr. Shorman and adopted 5-2 THAT BYRON D. DELANEY BE RECALLED FROM THE OFFICE OF PUBLICITY DIRECTOR AND BE NO LONGER A MEMBER OF THE STANDING TOURNAMENT AND CLUB RELATIONS COMMITTEE.

Mr. Morrison announced for the League Director, Mr. Leffman, that the Livermore Chess Club's team had won the CCCA 1970 USCF Summer League and presented the winner's trophy to Mr. Barnett. A round of applause followed.

Mr. Poschmann announced and described the First Pathfinder Team Tournament, to be held 24-25 October.

It was adopted by general consent that the meeting adjourn. The Chairman declared the meeting adjourned sine die at 11:45 p.m.

/The Chairman, in accordance with Article V, Section i, of the CCCA Bylaws, has announced the regular CCCA General Membership meeting in January for 8 January, 8:00 p.m., Berkeley Chess Club, Palm Room, Berkeley Central YMCA, 2001 Allston Way, Berkeley, CA.

#### \*\*\*NEWS NOTES\*\*\*

USCF MASTER JUDE F. ACERS HAS OFFERED TO GIVE SIMULTANEOUS EXHIBITIONS AND CHESS LESSONS THROUGH THE CCCA. Those interested should contact CCCA Chairman Martin E. Morrison (address and telephone number on page 2.)

IGM JULIO A. KAPLAN GAVE A SIMULTANEOUS EXHIBITION IN SANTA CRUZ on Sunday, 16 August at "The Catalyst," a local coffee house. Mr. Kaplan emerged the victor in all but one game, which he drew. The event was sponsored by the King's X Chess Club, a USCF affiliate.

ALBERT E. RACKETT, OF SANTA CLARA, IS PLANNING TO START A CHESS COLUMN IN THE SUNDAY SAN JOSE MERCURY-NEWS. CCCA members and affiliates are urged to give him all possible support. Written statements of interest and support should be sent to Mr. Rackett at 858 Bing Drive, Apartment 3, Santa Clara 95051.

THE BOOK OF THE 1970 UNITED STATES OPEN CHESS CHAMPIONSHIP, beautifully produced and edited by Stephen Dann, 97 Granite Street, Worcester, MA 01604, is still available for \$1. The Book was distributed to all players at the 1970 US Open in Boston. Included is a history of the Central California Chess Association, entitled "Rx for a USCF Regional Organization" by Martin E. Morrison with Elwin C. Meyers, CCCA Editors. The Book is heartily recommended to Chess Voice readers.

THE SIXTH ANNUAL ROCKFORD H. S. INVITATIONAL CHESS TOURNAMENT, a national high school event, will be held 28-30 December at the Faust Hotel, Rockford, Illinois. Over \$800 in cash scholarships and trophies will be provided. Special invitations have been sent to 13 schools in the Central California area. For further information on this USCF-rated seven-round Swiss, contact Gary K. McLamarrah, 611 King Street, Rockford, IL 61103.

#### \*\*\*THE COMPLETE OFFICIAL STATE TOURNAMENT CALENDAR\*\*\*

(Continued from page 3.)

4-6 Sept.	Calif. Open	USCF & CSCF	Monterey?
11-12 SEPT.?	CCCA'S REGIONAL USCF CLASS CHESS T. AT ?	USCF	?
mid Sept.	74-Rd "Tornado" Rating T.	USCF	San Francisco
19 Sept.	9th Ann. Scholarship Chess Festival	-	Hayward
late Sept.	6th Ann. 1971 Sunnyvale Open Chess Championship T. & 1971 Santa Clara Open Jr. Chess Championship T.	CFNC (& USCF)	Sunnyvale

\*\*\*SPECIAL REPORT ON THE CCCA'S USCF CLASS TOURNAMENT AT SAN JOSE\*\*\*  
By ERIK D. OSBUN, USCF Master

I. The San Jose tournament was a great success with respect to the large attendance, but a dismal failure with regard to the quality of the games produced by the premier section. The reason for this was the poor playing conditions, a factor that few tournament organizers regard with enough seriousness. The poor conditions were: (1) the oppressive heat, (2) the crowding of the playing rooms, and (3) the too rapid time limit.

Everyone who was there remembers the lack of elbow room and the horrible heat. I have it from Frank Skoff in the Illinois Chess Bulletin (May 1968) that a chess player's brain uses enough energy during a two-round day to heat about six quarts of water from the freezing point up to the boiling point. How many of you wish you had stayed home and boiled water instead?

Several participants have expressed to me the fact that the time limit was too fast. All of the important games of the premier section were decided by the clock as I shall show in Part II of this report. This situation is deplorable and should have been avoided by adopting a time limit of 40 moves per two hours instead of 40 per one and one-half. I have it from our tournament directors that "It takes too long" (referring to 40 per two). This argument does not make sense to me and others because we started late on both days (11:45 on Sunday). It is my firm conviction that our chess tournaments should be run according to the wishes of the participants and by a code of minimum standard playing conditions set by the USCF for USCF rated events. The CCCA is a progressive chess organization. Why can't we have some pioneer efforts in this direction? EDS NOTE: A reply to some of the points contained in Mr. Osbun's article and the plans for future CCCA tournaments which will meet Mr. Osbun's criteria will be found at the end of this article.

We are most grateful to Mr. Osbun for forcefully stating his position here, which will stimulate the CCCA to hold even better events. It is only by hearing constructive criticism such as this that chess organizers and organizations will improve.

II. Games and Vignettes.

Leonard Hill vs. Blazo Sredanovic, Round 1.

Leonard Hill played Fischer in the US Junior Championship 1957, scored 90% as fourth board on the San Jose State National Collegiate Championship Team 1964, and now teaches Spanish to high school students and promotes junior chess.

Blazo Sredanovic was a candidate master in Yugoslavia prior to his sensational introduction to California chess when he won the 1964 Monterey Open by beating Tibor Weinberger in the last round. He quickly achieved a 2300-plus rating as a result of his high scores in subsequent events including the National Open in Las Vegas 1965. Currently he plays little chess, devoting his time to his work as an electrical engineer.

1 P-K4	P-QB4	9 B-K3	B-K2	17 P-QN3*d	Q-B2	25 RxB	K-N2
2 N-KB3	P-K3	10 Q-Q2*a	B-Q2	18 B-N5	P-B3* <sup>e</sup>	26 R-B3	QR-K1
3 P-Q4	PxP	11 P-B4	N-QB4* <sup>b</sup>	19 PxP	PxP	27 R/3-K3	K-R1
4 NxB	N-KB3	12 QR-K1	N-B5	20 RxB!	RxB	28 K-N1	R-N3
5 N-QB3	P-QR3	13 RxB	QxB	21 NxBch	NxB	29 P-B4	R/1-KN1
6 B-K2	Q-B2	14 P-K5*c	PxP	22 Q-N5ch	K-B1	30 P-N3* <sup>f</sup>	
7 O-O	P-Q3	15 PxP	N-Q4	23 RxB	R-KN1		
8 K-R1	N-B3	16 N-K4	O-O	24 Q-K5	QxQ		

\*a: Usually the queen goes to K1 in this variation.

\*b: Derelicts control of vital K4. Safe is ...NxB followed by ...P-K4 at the critical moment.

\*c: Very strong.

\*d: But here 17 P-B3 is best.

\*e: How would White proceed after 18 ...B-N5?

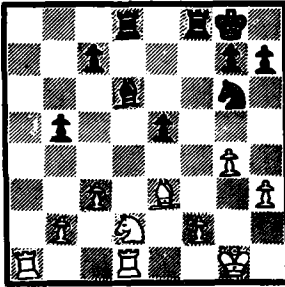
\*f: And White won, although the remainder of the score was lost in the time scramble that followed -- too bad, because I was told that Black missed a chance to win the Exchange and the game after mutual blunders. In the next round both Hill and Sredanovic were victims. Hill, in terrible time pressure vs. Iwashita, let a pawn queen unopposed, and Sredanovic left a piece hanging in a winning position. Sredanovic, disgusted, withdrew.

Vignette from Erik Osbun vs. Craig Barnes, Round 1.

Craig Barnes is a promising junior player, who scored well in the last California Junior Championship, losing only to the winner Kenneth Morrissey in an exciting game. He takes a critical view of his play and has a good tactical sense, but should try to improve his positional judgment.

I am currently a low-rated USCF Master (2210), have qualified to the State Championship this year, and was first board on the San Jose State National Inter-collegiate Championship Team 1964. I was twice CFNC Expert Champion (1959 and 1964), second in my first State Championship try in 1967, and first or tied-for-first in

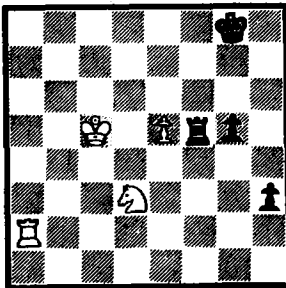
numerous local Swiss System tournaments. I have never held a USCF rating below Expert, which I earned in my first rated tournament (California Open at Santa Barbara 1958).



Vignette from Alan LaVergne vs. C. William Jones, Round 3.

I do not know Alan LaVergne except that he is currently rated USCF Class A, but he plays like an Expert.

C. William Jones is a Master originally from Texas and not currently rated by the USCF. He is capable of very imaginative play, as shown by this and the following example. He is currently making big money as a computer expert.



In this position White has a great positional advantage, which he could increase by 1 P-QN4, setting up the Black QNP as a target (1 P-QN4, N-B5?; 2 K-R2, N-Q6?; 3 N-K4 +). Instead, hassled by the clock, I played the attacking move 1 R-R5?, and the game continued 1 ...P-N5!; 2 P-QB4, N-B5; 3 RxB, RxB; 4 R-Q5, B-K2; 5 RxBch, BxR; 6 P-B3?? (In great time pressure I transpose moves. 6 P-N3 gives a perfectly playable game with chances for a decisive advantage, should Black fail to play energetically for the draw with 6...R-Q5; 7 K-B1, R-Q6!; 8 P-B3, B-N4; 9 K-K2, B-K6ch.), R-Q5; 7 K-B1, B-N4; 8 K-K2, BxN, and Black won a pawn and the game. Craig Barnes thought he had no losing position in this game, but he should reconsider the situation after 1 P-QN4.

Bill Jones sat for at least fifteen minutes sweating White's possibility 1 R-KB2!, which wins outright because the rook exchange is forced, and the knight blocks both black pawns, but LaVergne had some hallucination and played 1 R-R2?, allowing a fine drawing line: 1...P-N5; 2 K-Q4, R-N4; 3 N-B4, P-N6; 4 RxB, R-N5! (not 4...P-N7?; 5 NxB, RxB; 6 R-KB3, and White should win); 5 K-K3, P-N7; 6 NxP, RxB; 7 R-B3, R-N5! and DRAWN. Such were the perils of tournament co-winner Jones!

In the last round Bill Jones vs. J. Spingarn (a man I do not know) was a typical clock game from this event.

- |          |        |          |         |          |        |                        |           |
|----------|--------|----------|---------|----------|--------|------------------------|-----------|
| 1 P-K4   | P-QB4  | 9 B-K2   | B-K2    | 17 P-KR3 | P-B5   | 25 B-B4!               | N/5-K7ch! |
| 2 N-KB3  | P-K3   | 10 0-0   | 0-0     | 18 PxB   | N-N6ch | 26 BxN                 | K-R1!     |
| 3 P-Q4   | PxP    | 11 K-R1  | Q-Q2    | 19 K-N1  | PxB    | 27 P-N5*f              | R-Q1!     |
| 4 NxP    | N-QB3  | 12 Q-K1  | QR-Q1   | 20 RxB   | B-B4ch | 28 N-N4                | R-K1      |
| 5 B-K3*a | N-B3   | 13 R-Q1  | PxP     | 21 R-B2  | RxB    | 29 Q-Q2                | NxBch     |
| 6 N-QB3  | P-Q3*b | 14 BxBP  | N-KR4*d | 22 N-R2  | N-Q5   | BLACK FORFEITS ON TIME |           |
| 7 P-B4   | P-K4*c | 15 B-B1  | P-B4?!  | 23 B-Q3  | R-Q3*e | *g                     |           |
| 8 N-B3   | B-N5   | 16 P-K5! | Q-K3    | 24 BxB?! | PxB    |                        |           |

\*a: N-N5 is better.

\*b: Passive. Why not 6...B-N5, followed by ...P-Q4?

\*c: A very risky idea.

\*d: Black has a bad position, but he makes it very interesting.

\*e: Both players have played this unequal position creatively. Now White could foreclose Black's mortgage with 24 N-R4, but he looks at Black's overtaxed clock and gets fancy.

\*f: Best, as Black threatened ...Q-R3 and ...QxNch!

\*g: Black has a good position now and could play for a win after 30 QxN, BxBch!, as 31 KxB is not possible. How awful! Do such games have to be decided by the clock?

James Iwashita vs. Jude Acers, Last Round.

Jim Iwashita is a USCF Expert, current co-holder of the San Jose Chess Club title (with William Adams and I), second board San Jose State National Intercollegiate Championship Team 1964, and drew three Masters in last year's California Open in Monterey (Blackstone, Henin, and Ramirez).

Jude Acers is currently rated USCF Expert, but held a Master rating a short time ago. He is Games Editor of The California Chess Reporter and probable CCCA representative to the next State Championship. Jude has played in many and won several local Swiss tournaments, but too many of these events lost him his Master rating. Jude is a very aggressive and creative player, so I expect to see him with a Master rating again soon.

1 P-Q4	P-Q4	10 P-KB3	B-R4	19 K-R2	N/2-B3	*k	
2 P-QB4	P-K3	11 Q-B2	QN-Q2	20 P-QN4	P-B5*h	28 BxB	Q-K5*1
3 PxP	PxP	12 N-KR4*d	B-N3	21 P-K4	P-B6!	29 R/1-KB1	QxB
4 N-KB3*a	P-QB3	13 N-B5*e	BxN	22 P-N3	NxNP!*i	30 PxP	PxP
5 N-B3	B-KB4*b	14 BxB	Q-O	23 PxN	P-B7	31 N-K2	R-K1
6 B-N5	B-K2	15 O-O	P-KN3	24 R-KB1	N-R4	32 N-B4	QxQP
7 BxB	QxB	16 B-Q3*f	N-R4	25 N-K2	NxP?!*j	33 WHITE RESIGNS	
8 P-K3	N-B3	17 QR-N1*g	P-KB4	26 NxN	R-B6		
9 B-Q3	B-N5*c	18 KR-K1	Q-N4	27 QxP/2??	RxQch		

\*a: 4 N-QB3 is better.  
 \*b: Alert play.  
 \*c: Black has good reason to play for more than equality because White wins the tournament on a draw.  
 \*d: Although other moves suggest themselves, this move is quite good.  
 \*e: But here 13 B-B5 restricts Black. White cannot avoid double-edged play after the text move.  
 \*f: Even after 16 BxN, NxB; 17 QR-N1, P-KB4, the White king is not safe.  
 \*g: Maybe 17 QR-K1, P-KB4; 18 P-B4 is necessary.  
 \*h: Very strong.  
 \*i: A correct sacrifice.  
 \*j: A second knight is offered! An incorrect sacrifice. Both players rejected 25 ...R-B6 because of 26 Q-B1, QxQ; 27 NxQ--or 27 QRxQ, RxB; 28 PxP, PxP; 30 RxP/2, R-Q7 in Black's favor--but then simply 27 ...NxP is good. For example: (1) 28 K-N2, NxR!; 29 BxN, PxP; or 29 KxN, R/1-KB1, threatening to queen the pawn; or 29 KxR, R-B1ch; 30 K-N2, N-K5ch, and White is in deep trouble, and Black surely has sufficient compensation. (2) 28 RxP, BxRch; 29 KxN, R-Q7 or R/1-KB1; 30 PxP, PxP, and Black's aggressive rooks tie up the White pieces.  
 \*k: 27 N-R1 gives White good winning prospects: (1) 27...Q-R5; 28 NxP, Q-N6ch; 29 K-R1, R/1-KB1; 30 N-N4! (2) 27...Q-K6; 28 NxP, R/1-KB1; 29 R-N2!, justifying the "minority attack"! (3) There is no perpetual checking variation. White was in serious time trouble, and so Acers also slides into first place with help from the clock!

\*l: This is what White overlooked.

Erik Qabun vs. Alan LaVergne, Last Round.

1 P-K4	P-QB4	11 O-O-O	KR-B1	21 P-N5*e	N-R4	31 N-K2	K-B2
2 N-KB3	N-QB3	12 K-N1	N-K4	22 BxB	NxB	32 Q-Q5ch	K-K2
3 P-Q4	PxP	13 P-KR4*a	N-B5	23 NxNP	Q-N3	33 R-Q2	R-B4
4 NxP	P-KN3	14 BxN	RxB	24 N/5-Q4	B-Q2*f	34 Q-K4	R-N4
5 N-QB3	B-N2	15 N-N3	Q-B2*b	25 N-B5!*g	BxN	35 Q-B2?*i	N-B4
6 B-K3	N-B3	16 B-Q4	B-K3	26 PxR	P-R5	36 BxNP	N-K6
7 B-QB4	O-O	17 P-KN4	P-QB3*c	27 N-Q4	R-N1	37 R-N7ch	K-B1
8 B-N3	Q-R4	18 P-R5	P-QN4	28 P-B3	P-K4*h	38 R-N8ch	KxR
9 P-B3	P-Q3	19 PxP	RxP	29 PxP e.p.	PxP	39 Q-N6ch	K-B1
10 Q-Q2	B-Q2	20 P-QR3	P-R4*d	30 R-B6	P-K4	DRAW*j	

\*a: Possibly 13 Q-K2 is stronger.  
 \*b: 15...Q-R3 is a loser.  
 \*c: Too slow. 17...P-QB4 is correct as in Gheorghiu-Geller, Moscow 1967. LaVergne thought I would just ignore the QRP's advance 18 P-R5, P-R5; 19 N-B1, P-R6; 20 P-N3, and Black's attack is blocked, but I cannot because 19...NxKP! would win. So Gheorghiu's reply 17 P-QR4 is forced.  
 \*d: White's threat of 21 Q-R2 and 22 P-K5 is hard to meet, so this pawn sacrifice.  
 \*e: Black had underestimated this move.  
 \*f: 24...P-R5; 25 NxR, PxN/N6; 26 PxP, QxP; 27 N-Q4 is more difficult for White to win.  
 \*g: Surprise! If either ...P or NxN, 26 Q-R2 wins.  
 \*h: There is nothing better.  
 \*i: Hassled by the clock, White overlooks that move which he saw immediately afterward: 35 P-QN4! wins in a walk.  
 \*j: Neither side can avoid it.

III. Why is the time limit important?

In all of the above examples where one or both players were hassled by the clock, the discerning reader will notice that when moves of a defensive nature were called for, they were the ones most frequently overlooked. Attacking moves are easier to find in time pressure.

Defense is the more difficult art. The quality of an individual game score is proportional to the quality of the defense offered. When the clock influences too often the careful consideration of defensive moves, then the clock becomes the destructor of the considerate player's esthetic sensibility.

The appropriate time limit to be adopted is thus a value judgment of sorts. I think as do several others, that anything faster than 40 moves per two hours is detrimental to chess art.

I offer to you an example of five-minute chess played between two masters at the San Jose Chess Club recently that will help amplify my thoughts about clock time with respect to attack and defense. Fischer says that five-minute chess kills your ideas. Here the player on the defensive fails to find a good defense to a fishy, but creative attack. Probably five-minute chess kills the ability to defend well.

1 P-K4	P-QB3	9 N/5-B3	P-B4	17 P-B4	R-N3	25 KxB	NxQ
2 P-Q4	P-Q4	10 PxP	BxP	18 PxN	BxP	26 N-Q4	Q-B3
3 N-QB3	PxP	11 B-Q2	O-O	19 B-B3	PxP	27 RxN	QxBch
4 NxP	N-Q2	12 O-O-O	Q-K2	20 KR-K1	B-KB4	28 B-N3	QxNch
5 B-QB4	N/1-B3	13 N-K5	P-QR4	21 N-Q3	N-K5	and Black won	
6 N-N5	P-K3	14 P-QB3	P-B5	22 B-Q4	R-B1ch		
7 Q-K2	N-N3	15 B-R2	N/N-Q4	23 K-N1	BxP		
8 B-N3	P-KR3	16 N/1-B3	R-R3	24 BxR	N-B6ch		

\*

EDITORS' REPLY: Two of the factors mentioned in Part I by Mr. Osbun, oppressive heat and crowding of playing rooms, could not have been foreseen by the tournament officials. No one could have predicted that 18-19 July would be one of the hottest weekends of the year. The room at the San Jose YMCA was kindly arranged for at minimal charge (to increase the prize fund) by the San Jose Chess Club. The room rented was to seat comfortably 80 players; 75 were expected. When 105 players registered, two additional rooms were opened, one to take the overflow and one for analysis and skittles. The tournament directors even turned over half of their room for use by the players. We are satisfied that under the circumstances the players were well looked after. Naturally, in the future, we shall learn from the experience gained from this tournament to improve the playing conditions even more. No tournament, no matter how carefully planned, runs without such hitches, and the huge turnout, to make this the largest all-USCF tournament ever held up to that time in Central California, in our view should compensate the players for the few inconveniences suffered because of it. Many players were evidently satisfied enough to return to the CCCA's Second Annual USCF Adult and Junior Chess Championship of Central California (8-9 August) to produce a record-shattering 123-player tournament.

On the question of time limits it may even be argued that in weekend Swisses master-caliber play is difficult at any limit. We have just received a letter on this subject from Isaac I. Kashdan, International Grandmaster and FIDE Judge, whose opinions must carry a great deal of weight. He writes: "A slower limit is fine if only one game a day is played. But in the usual weekend Swiss, or whenever two or more games a day are played, high calibre chess is practically impossible, no matter what the time limit. When eight to ten hours of regular sessions are scheduled, plus adjourned games, endurance is an essential element, and the quality of chess must suffer. Actually a three hour time limit, such as 40 in 1 1/2, works out better if players adjust to it. They can sit at the board without getting up for three hours, and put in as much thinking time as in a four hour session, when they get up frequently, walk around, and get back to the board when the opponent has moved."

Nevertheless, the CCCA, in its progressive spirit, has and will continue to experiment with various solutions. Rest assured that we seek the slowest time limit for Master/Expert games compatible with the exigencies of the tournament. There are two basic situations we wish to avoid for the premier player: three rounds in one day and too many hours of play per day, because both produce fatigue, which will kill the quality of a game far more than any time limit. On Mr. Osbun's earlier suggestion, we cut down our weekend Swisses from five to four rounds, thus avoiding the fatigue of playing three rounds in any one day. This experiment met with general approval and will be continued. However, if we follow Mr. Osbun's current recommendation to begin play earlier in the day, player fatigue would revert to its previous level.

Last February, the CCCA pioneered in this region by introducing for Masters and Experts the 40/2 time limit at its USCF Class Chess Tournament at Berkeley (The Washingtonian). Next February the CCCA will again sponsor a 40/2 tournament with the play spread over three days. Other 40/2 tournaments will be sponsored, as well as some 35/1.75 tournaments, to be held at the Berkeley Chess Club. The latter time control is at the same rate as 40/2, but with a shorter playing period, to complete the rounds in the available time. Future plans will be made after studying the results of these experiments.

Thank you again for sharing your opinions, Mr. Osbun. We hope that by thus discussing the problem and experimenting with various possibilities, we shall eventually develop the best possible, feasible arrangement for all players. This is our progressive commitment, our goal.

\*\*\*LATEST OFFICIAL USCF RATINGS OF CCCA MEMBERS\*\*\*

These are the official USCF ratings of CCCA members through the "Rating Supplement, Summer 1970," published in the June Chess Life & Review. Almost all of the CCCA members through the 5 August assessment period with USCF ratings are listed. Please notify the Editors of any additions or corrections.

MASTER: 2200-2399; EXPERT 2000-2199; CLASS A: 1800-1999; CLASS B: 1600-1799; CLASS C: 1400-1599; CLASS D: 1200-1399; CLASS E: below 1200.

\* indicates provisional ratings based on 10 to 18 games. Such ratings are less reliable than established ratings. # indicates ratings based on 4 to 9 games. Such ratings are highly unreliable. Players who have played less than 4 games are not listed.

Total number of CCCA members with USCF ratings: 129 (33%).

ANTIOCH CC (5): R Guzman 1510\*; F Olvera, Sr. 1536; R Oyler 1670; F Ulrich 1636; C Vail 1602. BECHTEL CC (4): W Allen 1986; T Cahill 1529; A Hanak 2092; A Saguisag 1828. HERKELEY CC (3): G Baum 1662; M Maloney 1550#; E Meyers 1643\*. COLLEGE OF THE SEQUOIAS CC (1): C Fotias 1560. CONCORD CC (7): R Guzman 1510\*; G Harcus, Jr. 1466#; J Moore, Jr. 1656#; W Noble 1396#; F Olvera, Sr. 1536; F Ulrich 1636; C Vail 1602. EVERYMAN ATHLETIC CLUB (1): J Rowell 1857. FREMONT CC (3): A Friedman 1853#; G MacLeod 1497\*; H Poschmann 1674. HAYWARD CC (6): M Albertson 1478#; E Bartholomew 1613; R Holloway 1488#; K Lawless 1722\*; L Lopez 1800\*; E McNally 1846. LIVERMORE CC (8): R Anderson 1576; H Barnett 1685; R Cooper 1492\*; K Giallanza 1273#; J Ranalletti 1217#; G Roust 1639; J Shearer 1873; D Smith 1671#. MARIN CC (1): L Post 1822. MARTINEZ CC (2): R Nace 1684#; R Swanson 1615. MONTEREY PENINSULA CC (2): R Atkinson 1539; M Ewell 1908. OAKLAND CC (26): T Anderson 1443#; C Barnes 1888; R Blauner 1672#; A Boyd 1154#; M Crossland 1472\*; R Cuneo 1773; D Forthoffer 2088; R Hansen 1865; L Lane 1260#; M Lee 1772#; R Lee 1389; F Leffman 1676#; C Maddigan 1796; E Meyers 1643#; R Mitchell 1855; R Ng 1816; S Quen 2100#; A Ramirez 1785; J Salna 1830; M Sloane 1516#; W Sprague 1850; R Trenberth 1771; S Tresz 1813; R Turney 1517#; G Weber 1848; M Weber 2005\*. ORINDA CC (2): A Boyd 1154#; D Campbell 1739. PIEDMONT HILLS H. S. CC (1): J Brittain 1368#. RICHMOND CC (3): L Baker 1555; G Claudio 1653#; L Trotter 1513. SAN JOSE CC (25): W Adams 1942; T Byrne 1786#; A Critchlow 1821; Francis Crofut 1795; Fred Crofut 1791; R Delashmutt 1622; W Dickinson 1701#; A Ferreira 1892; A Gardner 1548#; M Gazze 1681; R Gordon 1726#; J Iwashita 2050; H Mohrmann 1888#; L Mueller 1878; D Myers 1831; C O'Brien 1519#; E Osburn 2210; F Penoyer 1601; J L Peterson 1540; H Radke 1885; E Rosenthal 1501; R Roubal 1830#; G Temme 1611; P Weiss 1712; S Willett 1325#. SANTA ROSA CC (4): J Evans 1581; L Henderson 1527#; D Johnson 1741; S Kornher 1970. UC DAVIS CC (13): R Benson 1484#; G Comini 1553#; F Gerosi 1578; B Hamilton 1761; F Kimball 1656; D Koutney 957#; D Olmsted 1659; A Olson 1620; G Pickler 2103; R Pina 1633#; R Roach 1662; M Shifrine 1836; S von Oettingen 2083. VALLEJO CC (5): F Harris 1662; L O'Doan 1604; G Rasmussen 1869; B Smith 1879; N Wood 2087. VISALIA CC (1): C Fotias 1560. WALNUT CREEK CC (4): S Bass 815#; G Bigelow 1609#; S Mujahed 1626#; J Weiler 1461. WESTERN ADDITION CC (1): C Smith 1879#.

\*\*\*FINAL TOTALS: CCCA CALIFORNIA STATE CHESS CHAMPIONSHIP QUALIFYING POINTS\*\*\*

All points from 1 October 1969-30 September 1970 have been totaled. For upcoming tournaments awarding Points for the 1971 Championship, see page 3.

Jude F. Acers 24.75, Michael R. Ewell 19.50, Craig N. Barnes 15.00, Gary C. Pickler 14.00, C. William Jones 12.50, Borel Menas 9.50, Alan Benson 9.00, Garland L. Brinkley 9.00, Anthony J. DiMilo 8.50, John A. Wallan 8.50, Raymond J. Cuneo 8.25, Stephen Korhner 7.75, Bernard Lainson 6.25, Steven Cross 6.00, Kenneth L. Fitzgerald 6.00, Mark B. Gazze 6.00, Kenneth M. Goodall 6.00, Benjamin L. Gross 5.25, William G. Addison 4.00, Harold L. Barnett 4.00, Marcos B. Costa 4.00, Philip D. Smith 3.38, William F. Grey, Jr. 3.00, Jairo L. Gutierrez 3.00, James T. Iwashita 3.00, Takashi Kurosaki 3.00, Gary MacLeod 3.00, Sergius von Oettingen 3.00, Erik D. Osburn 2.50, Schulyer Bailey 2.00, Randall W. Feliciano 2.00, James Gettys, Jr. 2.00, Louis J. Mancini 2.00, Hugh Noland 2.00, Richard Roach 2.00, Douglas A. Ulth 2.00, Wayne P. McClintock 1.69, Ake A. Gullmes 1.50, Wayne R. Judd 1.50, Harry Radke 1.50, Posheng Yen 1.50, David R. Bennett 1.00, H. Richard Irwin 1.00, Mark E. Kaufman 1.00, Donald Mack 1.00, John E. Narcisi 1.00, Arnold Olson 1.00, Stephen Gee 0.50, Dennis Myers 0.50.

Jude F. Acers, a USCF Master from San Francisco, is thus the CCCA's Qualifier to the Championship. Mr. Acers is well known to the players in the Central California area. He has been a constant participant in CCCA tournaments and has given many simultaneous exhibitions and lectures for CCCA affiliates. He is Games Editor for the CSCF magazine, The California Chess Reporter. Mr. Acers has been described by Dennis H. Raymond in an article to be published in Sports Illustrated as follows. (Continued on page 15.)

\*\*\*CCCA AFFILIATE DIRECTORY\*\*\*  
(Current number of CCCA affiliates: 34; members: 361.)

For information on affiliation to the CCCA and its benefits, contact the Editors (address and telephone number on page 2). THE FOLLOWING ARE NOT MAILING ADDRESSES.

\*

ALAMEDA CC: inactive at present. ALAMEDA NAS CC: Alameda Naval Air Sta., Alameda.  
ANTIOCH CC: Thur. nights; Conf. Rm., Cen. Valley Nat. Bk., 2516 Sommersville Rd.,  
Antioch. BECHTEL CC: Wed., 7:30 p.m.; 11th Floor Conf. Rm., 50 Beale St., San  
Francisco. BERKELEY CC: Fri., 7-11 p.m.; Palm Rm., Berkeley Cen. YMCA, 2001  
Allston Wy., Berkeley. BERKELEY LIVE OAK CC: Mon., 7-10:30 p.m.; Live Oak Rec.  
Cen., 1301 Shattuck Ave., Berkeley. BERKELEY SEN. CEN. CC: Tues., 9 a.m.-12 m.;  
Sen. Cen. of Berkeley, 1849 University Ave., Berkeley. CAP. CITY CC: Wed., 7:30-  
11 p.m. Clunie Clubhouse, Alhambra and "F" Sts., Sacramento. CATERPILLAR CC:  
inactive at present. COL. OF THE SEQUOIAS CC: Tues., 12 m.-1 p.m.; Rm. 338 Col.  
of the Sequoias, Visalia. CONCORD CC: Fri., 7:30-11:30 p.m.; Concord Sen. Citizens  
Cen., 2974 Salvio St., Concord. DVI CHESS INT. GROUP: Deuel Vocational  
Inst., Tracy. EVERYMAN ATHLETIC CLUB CC: Tues. nights; Del Webb Townhouse, 2220  
fulare St., Fresno. FREMONT CC: Thur., 7-11 p.m.; Westridge Pk. Rec. Cen.,  
36200 Fremont Blvd., Fremont. HAYWARD CC: Mon. and Fri., 7:30-12 p.m.; Hayward  
Art and Science Cen., 2058 "D" St., Hayward. LIVERMORE CC: 1st and 3rd Fri.,  
7:30-12 p.m.; Old Lib., Carnage Bldg., 4th and "J" Sts., Livermore. MARIN CC:  
Tues. even.; London Arms, 81 Red Hill Ave., San Anselmo. MARTINEZ CC: Mon.,  
7:30 p.m.; 1111 Ferry St., Martinez. MONTEREY PEN. CC: Thur., 7:30 p.m.; Casa  
Alvarado Chess Cen., 494 Alvarado St., Monterey. OAKLAND CC: Fri., 7:00-11:30  
p.m.; Multipurpose Rm., Lincoln Elem. Sch., 225 Eleventh St., Oakland. ORINDA  
CC: Thur., 7:30 p.m.; Orinda Com. Ch., 10 Irwin Wy., Orinda, Oakl. ORINDA  
PIEDMONT HILLS H. S. CC: Mon.-Fri., 2:30-4 p.m.; Rm. E-14, Piedmont Hills H. S.,  
1377 Piedmont Rd., San Jose. PLEASANT HILL CC: Fri., 7:30 p.m.; Pleasant Hill Pk.  
and Rec. Cen., 147 Gregory Ln., Pleasant Hill. RICHMOND CC: Fri., 7 p.m.; Our Lady  
of Mercy Ch., 301 W. Richmond Ave., Pt. Richmond. ST. MARY'S COL. CC: St. Mary's  
Col. of Calif., Moraga. SAN JOSE CC: Wed., 7:30 p.m.; San Jose Cen., YMCA, 1717 The  
Alameda, San Jose. SAN QUENTIN CC: Calif. State Prison, San Quentin. SANTA ROSA  
CC: Fri., 7-10 p.m.; Santa Rosa Jr. Col., 1501 Mendocino Ave., Santa Rosa.  
UC CC: Fri., 7-11 p.m.; Palm Rm., Berkeley Cen. YMCA, 2001 Allston Wy., Berkeley.  
UC DAVIS CC: Mon., 7-11 p.m.; Games Rm., Mem. Union, Univ. of Calif., Davis.  
VALLEJO CC: Fri., 7:30 p.m.; Vallejo Com. Cen. Bldg., 225 Amador St., Vallejo.  
VISALIA CC: Fri., 7:30 p.m.; Rec. Pk. Bldg., 345 No. Jacob St., Visalia. WALNUT  
CREEK CC: Tues., 7 p.m.; Sen. Citizens Hospitality House, 1835 Civic Dr., Walnut  
Creek. WESTERN ADDITION CC: Tues., 7:30 p.m.; Family Serv. Agcy., 1010 Gough St.,  
Cath. Hill, San Francisco.

\*\*\*FINAL TOTALS: CCCA CALIFORNIA STATE CHESS CHAMPIONSHIP QUALIFYING POINTS\*\*\*  
(Continued from page 14.)

". . . a 26-year-old chess maniac who happens to be a noble chess showman and the  
most freaky, unexpected thing to happen in American chess since Bobby Fischer of  
Brooklyn bombed his elders and won the U. S. title at age 13. . . He is six-feet,  
two-inches tall, weighs in at 190, is the world's fastest talker and winker,  
doesn't smoke, doesn't drink and likes girls very, very much. . . Friendly, very  
gifted, and one of the most dangerous young players in the nation. . ."

The CCCA wishes the best of luck--and skill--to Mr. Acers in his try for the  
State Championship.

\*\*\*CCCA 1970 USCF SUMMER LEAGUE: FINAL RESULTS\*\*\*  
By FRANK V. LEFFMAN, CCCA League Director

Division I

Team	R1	R2	R3	Tot	Rnk
Livermore	1	$\frac{1}{2}$	1	2 $\frac{1}{2}$	1
Fremont	0	$\frac{1}{2}$	1	1 $\frac{1}{2}$	2
Everyman	0	1	0	1	3-4
Hayward	1	0	0	1	3-4

Division II

Team	R1	R2	R3	R4	R5	Tot	Rnk
Concord	1	0	1	1	-	3	1-2
Oakland B	1	1	0	-	-	1	3
Oakland A	0	-	0	1	1	2	3
San Quentin A	-	0	0	0	0	0	4-5
San Quentin B	0	0	-	0	0	0	4-5

Since no team in Division II won that Division to challenge Livermore in a playoff  
match, Livermore was declared the winner of the League and was presented the  
winner's trophy at the 11 September CCCA General Membership meeting.

**CCCA AREA VICE CHAIRMAN**

FREDERICK J. ULRICH ponders a critical move against Charles A. Maddigan. Mr. Maddigan finished as First Class B, and Mr. Ulrich placed as Second-Through-Fifth Class B (1. to 5. fr.). In the rear is John R. Moore, Jr., officer of the host Concord Chess Club. The scene is the CCCA's Summer USCF Class Chess Tournament at Concord, held 5-6 September. (Photograph courtesy of Richard R.



men, CCCA Publicity Director.)

**NEXT CCCA GENERAL MEMBERSHIP MEETING (THE ANNUAL MEETING):** Friday, January, 8:00 p.m., Berkeley Chess Club, Palm Room, Berkeley Center YMCA, 2001 Allston Way, Berkeley. Every member of the CCCA, i.e. everyone who is certified by the appropriate officer of a chess club or organization affiliated to the CCCA (listed on p. 15) to be member or officer of the affiliate, has full privileges of debate and voting. Nonmembers are welcome. Annual elections.

**NEXT USCF TOURNAMENTS OF THE CCCA AND ITS AFFILIATES:** 2-4 October, Central California Open; 9 October and nine following Fridays, Berkeley Chess Club's Six-Round Random; 18-19 October, Fight of the Club; Nov., Sonoma County Championship; 14-15 November, Fourth Annual San Francisco Open Chess Tournament.

**CHESS CLOCKS:** Lowest price in the US; no waiting months for overseas delivery. RRB Luxus, cream-colored plastic case, 6" x 3" x 1 1/4"; two-year guarantee for dependable quality and durability at a moderate price; used at the most recent Interzonal Tournament (USCF). ONLY one available pickup from Leonard F. Trotter (address and phone number on p. 2) or John R. Moore, Jr., 1390 Kansas Circle, Concord 94521 (682-2438, or, at work in San Francisco, 556-6895) or mail from Mr. Trotter only (add 75¢ postage and insurance for distances within 50 miles of El Cerrito).



**POSTMASTER: SEND P. O. D. FORM 3579 TO:**  
Editors

Central California  
Chess Association  
Post Office Box 1629  
Oakland, California 94604  
Telephone: (415) 582-1973

**NEXT AFFILIATE ASSESSMENTS DUE:** 5 October and are delinquent thereafter. Appropriate officers of the affiliates should send a per club member, along with a list of the names and addresses of affiliate's members, to the CCCA Treasurer (address on p.2). "A fee of \$1 will be levied against any affiliate which does not present more than two weeks late without a valid excuse accepted by Treasurer."



**USCF MEMBERSHIPS AT A 20% DISCOUNT, ONLY FOR CCCA MEMBERS OR THOSE PLAYERS JOINING THE USCF AT A CCCA-SPONSORED TOURNAMENT:** \$4 (under 21), \$8 (21 and over) per annum, new or renewal. Others may join at the regular rate of \$5 or \$10, respectively. Send memberships to the CCCA Treasurer. Benefits include a monthly Chess Life & Review subscription, eligibility for a USCF (national) rating, and discounts on chess equipment.

**CSCF MEMBERSHIPS:** \$2.50 (under 21), \$5 (21 and over) per annum from CSCF Treasurer Dr. Ralph Hultgren, 1501 LeRoy Avenue, Berkeley, CA 94708. Benefits include a bimonthly California Chess Reporter subscription, use of a CSCF Rating Card (to keep track of your approximate updated USCF rating), and eligibility for Qualifying Points toward becoming the CCCA's Finalist in the California State Chess Championship.

**ALL CHESS PLAYERS ARE STRONGLY URGED TO BECOME MEMBERS OF THE UNITED STATES (USCF) AND CALIFORNIA STATE (CSCF) CHESS FEDERATIONS.**