

109 Chess Clubs
and Organizations

TOTAL CIRCULATION: 986
753 Chess Players

124 Chess Publications
and Libraries

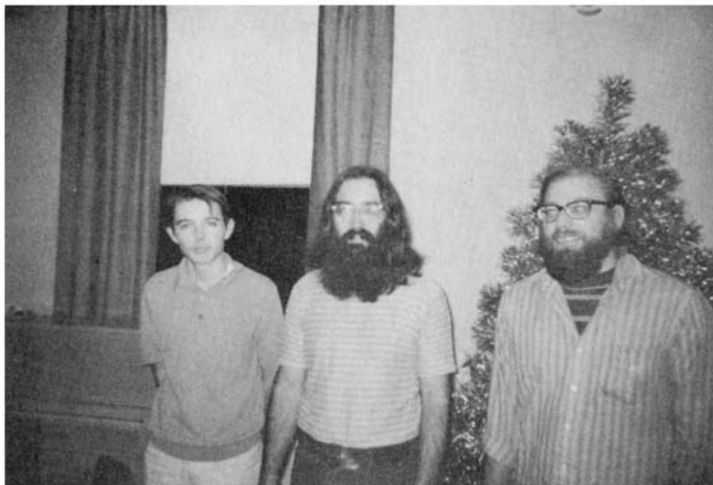
THE CENTRAL CALIFORNIA CHESS VOICE



CENTRAL CALIFORNIA'S CHESS MAGAZINE
and
OFFICIAL ORGAN
of the
CENTRAL CALIFORNIA CHESS ASSOCIATION
(An Authorized Affiliate
of the United States Chess Federation)

MARTIN E. MORRISON
Editors
. ELWIN C. MEYERS

February-March 1972
Whole No. 25



SAN FRANCISCO BAY AREA AMATEUR CO-CHAMPIONS ROGER GABRIELSON (CEN.) AND LESTER SCHONBRUN (R.) POSE WITH MARTIN SULLIVAN, FIRST CLASSES C/D/E. All three won their titles in the CCCA's Sixth Annual San Francisco Bay Area Amateur Open, held in Oakland on 18-19 December. Details of the tournament will be found in the "News" Section. (Photograph by Martin E. Morrison, Chess Voice Editor.)

Martin E. Morrison
Central California Chess Association
Post Office Box 1622
Oakland, California 94604
Telephone: (415) 582-1973

Send change of address notices, undeliverable copies, orders for subscriptions, and other mail items to the address above. Postmaster: Send PS Form 3579 to the address above.

Chess Voice is published bimonthly by the Editors of the CCCA. EVERY MEMBER OF THE CCCA, I.E., EVERY PERSON WHO IS CERTIFIED BY THE APPROPRIATE OFFICER OF A CHESS CLUB OR ORGANIZATION AFFILIATED TO THE CCCA (listed on page 15) TO BE A MEMBER OR OFFICER OF THE AFFILIATE, receives mailed to his home a Chess Voice subscription, paid for in connexion with the payment of the affiliate's CCCA assessments in a distinct, voluntary, and independent act on the part of each individual member, the relation of subscriber being clearly understood and fully agreed to. Known office of publication: Campus Bancroft Building, Room 206, 2440 Bancroft Way, Berkeley, California 94704. Second-class postage paid at Berkeley, California.

The opinions expressed in Chess Voice are those of the Editors or of the respective contributors. They do not necessarily constitute an official policy of the CCCA or any of its affiliates.

NONMEMBER SUBSCRIPTIONS: \$2.00 per annum.

ADVERTISEMENTS: 5¢ per word per issue on any subject (classified advertisements), \$5.00 per eighth page per issue, \$20.00 per insert per issue (this cost is more than \$60.00 cheaper for mailing tournament circulars, etc., than postage costs alone).

CENTRAL CALIFORNIA OFFICIALS

ALL COMMUNICATIONS SHOULD BE REFERRED TO MARTIN E. MORRISON (ADDRESS AND TELEPHONE NUMBER ABOVE).

Central California Chess Association (CCCA)

Officers (Members of the Executive Board): Martin E. Morrison, Chairman and Editor; Saleh Mujahed, Secretary; Leonard F. Trottier, Treasurer; Wesley A. Nelson, League Director; Elwin C. Meyers, Editor; Richard R. Shorman, Publicity Director.

Standing Committees: Clock: Leonard F. Trottier, Chairman; Martin E. Morrison. Tournament and Club Relations: Martin E. Morrison, Chairman, Elwin C. Meyers (Standing Tournament Subcommittee); Harold L. Barnett, Everett L. McNally (Club Coordinator).

CCCA Championship Administrator: Hans Poschmann. School Chess Coordinator: Robert E. Pellerin. Intercollegiate Chess League of America Liaison: Martin E. Morrison (ICLA Regional Vice President-Pacific). The CCCA serves in the position of intercollegiate chess league for the Pacific Region of the ICLA. Postal Chess Director: Edward J. Delgado.

California State Chess Federation (CSCF)

Officers: Robert E. Burger, Vice President; Spencer H. Van Gelder, Secretary; Dr. Ralph R. Hultgren, Treasurer.

Directors: W. Guthrie McClain, San Francisco Bay Area; Martin E. Morrison, At-Large, Northern California; William A. Myers, Jr., Central California Area; Gunnar H. Rasmussen, Redwood Empire Area (Chairman); Theodore Yudakufski, Monterey Bay Area.

Committees: Tournament, Northern Section: W. Guthrie McClain, Chairman; Southern Section: Martin E. Morrison, Chairman, Elwin C. Meyers, William A. Myers, Jr. Tournament Calendar: Martin E. Morrison.

United States Chess Federation (USCF)

Officer-Director: Martin E. Morrison, First Vice President, Region VIII-Pacific.

Directors: William T. Adams, William A. Bills, Robert E. Burger, Peter Dahl, Anthony J. Di Milo, Kyle Forrest, Chris A. Fotias, Russell A. Freeman, Dennis G. Fritzing, Dr. Benjamin L. Gross, Henry Gross, George Koltanowski (Life), Eugene S. Lien, W. Guthrie McClain, Robert R. McIntyre, Elwin C. Meyers, John R. Moore, Jr., Saleh Mujahed, William A. Myers, Jr., George B. Oakes, Hans Poschman, Gilbert Ramirez, Gunnar H. Rasmussen, Alfred Raymond, Philip D. Smith, Leonard F. Trottier, Spencer H. Van Gelder, Sergius von Oettingen, Max B. Wilkerson, Jr., Curtis R. Wilson, Theodore Yudakufski.

Committees: Tournament Administration: George Koltanowski, Chairman. Tournament Director Certification: George Koltanowski, Martin E. Morrison (Chairman, USCF Official Guide Subcommittee, and Member, Rules Subcommittee).

~ ~ ~

***THE COMPLETE OFFICIAL STATE CALENDAR AND CLEARINGHOUSE
FOR NORTHERN AND CENTRAL CALIFORNIA TOURNAMENTS
OFFICIALLY SANCTIONED BY THE CALIFORNIA STATE CHESS FEDERATION***

To avoid conflict, to publicize, and to promote attendance at California tournaments, Chess Voice maintains for the CSCF the Official State Tournament Calendar and Clearinghouse for Northern and Central California Tournaments, to have charge of data and to coordinate tournament dates. TOURNAMENT ORGANIZERS SHOULD SUBMIT EVERY NORTHERN AND CENTRAL CALIFORNIA TOURNAMENT DATE AS MUCH IN ADVANCE AS POSSIBLE (ANNUAL DATES MUST BE SUBMITTED EVERY YEAR) TO THE EDITORS (ADDRESS ON PAGE 2).

Calpoints to determine Central California's two qualifiers to the California State Chess Championship are awarded at all USCF-rated weekend tournaments sponsored by the CCCA or its affiliates (Calpoint tournaments are capitalized). Players must be members of the CSCF before entering a Calpoint tournament in order to acquire points for that tournament.

All tournaments are fully USCF-rated unless preceded by an asterisk.

*

19-20 FEB.	BERKELEY	CCCA'S 2ND ANN. GRAND PRIX CLASS CHAMPIONSHIPS OF USCF REGION VIII (PACIFIC)
19-20 FEB.	BERKELEY	CCCA'S 1ST ANN. COLLEGIATE CLASS CHAMPIONSHIPS OF THE PACIFIC
19-20 FEB.	MONTEREY	CHERRY TREE OPEN
26-27 FEB.	?	*1972 CPNC Championships
5-10 Mar.	Sparks, NV	National Open (A National Tournament)
11-12 MAR.	FRESNO	2ND ANN. FRESNO AMATEUR
12-18 Mar.	Lone Pine	Louis D. Statham Masters & Experts Chess Tournament
18-19 MAR.	SUNNYVALE	1ST ANN. SAN FRANCISCO BAY AREA HIGH SCHOOL CHESS CHAMPIONSHIP
24-26 MAR.	VISALIA	8TH ANN. PRE-EASTER VISALIA AMATEUR OPEN CHESS TOURNAMENT
1-2 APR.	SAN JOSE	CCCA'S 3RD ANN. USCF REGIONAL CLASS CHESS TOURNAMENT AT SAN JOSE
15-16 APR.	MILL VALLEY	MARIN CHESS CLUB'S 10TH ANNIVERSARY TOURNAMENT
6-7 MAY	SAN FRANCISCO	HILTON AMATEUR OPEN
27-29 MAY	FRESNO	2ND ANN. OFFICIAL CLASS CHESS CHAMPIONSHIPS OF CALIF. (A State T.)
17-18 JUNE	CONCORD	CCCA'S 4TH ANN. USCF REGIONAL CLASS CHESS TOURNAMENT AT CONCORD
15-16 JULY	HAYWARD	CCCA'S 1ST ANN. USCF WESTERN CLASS CHAMPIONSHIPS
5-6 AUG.	BERKELEY	CCCA'S 4TH ANN. USCF REGIONAL ADULT & JUNIOR CHESS CHAMPIONSHIP OF CENTRAL CALIFORNIA
13-25 Aug.	Atlantic City, NJ	73rd Ann. US Open Chess Championship
2-4 Sept.	Ventura	23rd Ann. California Open (A State Tournament)
16-17 SEPT.	SAN FRANCISCO	CCCA'S 2ND ANN. USCF REGIONAL CLASS CHESS TOURNAMENT AT SAN FRANCISCO
7-8 OCT.	?	CCCA'S USCF REGIONAL CLASS CHESS TOURNAMENT AT ?
4-5 NOV.	BERKELEY	CCCA'S 2ND ANN. USCF REGIONAL GOLDEN BEAR CLASS CHAMPIONSHIPS
23-26 Nov.	Santa Monica	8th Ann. American Open (A National Tournament)
16-17 DEC.	OAKLAND	CCCA'S 7TH ANN. SAN FRANCISCO BAY AREA AMATEUR OPEN
6 JAN.	WALNUT CREEK	CCCA'S 4TH ANN. USCF REGIONAL 1-DAY ROUND ROBIN CHESS TOURNAMENT AT WALNUT CREEK
20-21 JAN.	?	CCCA'S USCF REGIONAL CLASS CHESS TOURNAMENT AT ?

ITINERARY FOR ACERS EXCLUSIVE FAREWELL TOUR FOR CCCA

A few dates remain open between 10 February and 30 April for those clubs not having reserved a date. For details contact Martin E. Morrison (address and telephone number on page 2). Club's outside of Central California wishing to book Mr. Acers on his last nationwide tour should contact his tour manager, Russell W. Miller, P. O. Box 1631, Yakima, WA 98901.

Sponsors of exhibitions should take advantage of Mr. Acers's extremely generous financial arrangements to publicize their clubs and the exhibition by circulars, releases in local newspapers, and other means. Each sponsor should easily be able to draw at least twenty participants.

Mr. Acers's itinerary follows.

Fri., 11 Feb., 6:30 p.m., BERKELEY CC, Palm Rm., Berkeley Cen. YMCA, 2001 Allston Wy.

Sun., 13 Feb., 1:00 p.m., CATALYST, 821 Front St., Santa Cruz.

Tues., 15 Feb., 7:30 p.m., WALNUT CREEK CC, Sen. Citizens Hospitality House, 1385 Civic Dr.

(Continued on page 6.)

Oakland Sees Biggest Bay Area Amateur in Six Year History

Contesting with a record turnout, Roger Gabrielson and Lester Schonbrun entered perfect 5-0 scores in the CCCA's Sixth Annual San Francisco Bay Area Amateur Open to become Amateur Co-Champions, winning \$87.50 each. Donald W. Clapp, last year's Co-Champion, this year finished third at 4½-½ for \$50. Peter W. Stokes, also at 4½-½, became First B, and Martin Sullivan at 4-1 was First C/D/E. Both won \$50. The tournament, held 18-19 December, drew 102 players to Oakland under the direction of Martin E. Morrison with Elwin C. Meyers.

*

Casa Hosts Monterey Championship and Xmas Tourney

* The 1971-72 Monterey County Chess Championship was held at the Casa Alvarado Chess Center over the week-end of 4-5 December. Alex Suhobeck topped the field of 24 players at 4½, followed by Dan Maxwell and Wayne Sewell at 4. Class winners were Maxwell (A), Sewell (B), Ronald Erter (C), Steve Hand (D), David Sewell (Junior), Dolores Anderson (Woman), and Vadim Tarasov (Unrated).

* In the Casa's Christmas Chess Tourney, 22 players competed in four-man round robin sections. Theodore Yudakufski and K. Preston Oade, Jr., David Sewell and George Layton, Steve Vandervoort and Weegie Matthews (Junior or Under 1300 section), and Susan Fuhs, Gus Matheson, and Naomi Yudakufski tied for first place in their respective divisions. Each player brought a wrapped Christmas gift, and winners were allowed to select a certain number of the gifts as their prizes.

* An unrated Thanksgiving 30-30 Turkey Tussle was held on 21 November. Michael R. Ewell at 4½ led the field of 14, followed by Dan Maxwell (4), Ronald Atkinson (3½), and Bernie Lainson (3½). The first prize was—a turkey, of course.

Pictured at left is Barry G. Nelson, of Carmichael, first place winner of the 1971 Fight of the Bumbler B Chess Tournament, held at the Casa Alvarado Chess Center. Details of the tournament were published in the last issue of Chess Voice. (Photograph courtesy of Theodore Yudakufski, Games Host of the Center and a director of the USCF and CSCF.)

*

CSCF Revises Constitution

The California State Chess Federation's Board of Directors recently adopted amendments to the state federation's constitution, which mark the first time in over fifteen years that major changes have been made in the organizational structure of state-wide chess. Under the new system, the Board of Directors has been increased from ten to fifteen, nine to be selected by the regional organizations representing the three areas of the state, North, Central, and South. The Central California Chess Association will select three of those nine in representing the Central area. Three more directors each will be selected by the Bay Area Chess League (representing Northern California) and the Southern California Chess League (representing Southern California). Two more directors from each area will be elected at the CSCF's annual meeting.

For the purposes of state tournament administration, a Tournament Committee with Chairmen for each of the three state areas has been legislated. Martin E. Morrison has been appointed by CSCF President Isaac I. Kashdan for the Central area. He will join W. Guthrie McClain, Northern Chairman, and Gordon S. Barrett, Southern Chairman. Each chairman is empowered to appoint other members to the Committee for area tournaments. Serving as members for the Central area will be Elwin C. Meyers and William A. Myers.

A Tournament Calendar Committee, with one member to represent each of the three areas has been established "to avoid conflict, to publicize, and to promote attendance at California



tournaments, . . . to have charge of data and to coördinate tournament dates." Martin E. Morrison has been appointed by CSCF President Kashdan as committeeman for the Central area, and Chess Voice will continue to publish the official state calendar and clearinghouse for Northern and Central California.

In other important action, the Board adopted amendments to change the method of qualifying finalists into the State Championship. Following the system used for many years by the Southern California Chess League, Calpoints will be awarded in each of the three state areas. Players accumulating the highest totals in their respective areas, four from the Southern, two from the Central, and two from the Northern, will participate in the Championship, together with the winner of the California Open and the last year's Champion. Under the rules of the Calpoint System players must be members of the CSCF before entering a Calpoint tournament in order to acquire points for that tournament, and no Calpoint tournament may require as a condition of entry any membership other than USCF and CSCF. Players should note that no longer will any player qualify into the Championship by winning only one tournament (except for the California Open and the previous year's State Championship). Full details will be found elsewhere in this issue.

In recent years California's chess activity has increased to the point where the state federation is entitled to appoint over 40 USCF directors. According to the recently adopted amendments, CSCF officers and directors will automatically become USCF directors. The remaining number will be appointed by the Central California Chess Association, the Bay Area Chess League, and the Southern California Chess League, one-third each. The CCCA's list for 1971-2 is: Saleh Mujahed, Leonard F. Trottier, Wesley A. Nelson, Elwin C. Meyers, Sergius von Oettingen, Hans Poschmann, William T. Adams, Robert R. McIntyre, George B. Oakes, Philip D. Smith, Anthony J. Di Milo, Eugene S. Lien, John R. Moore, Jr., Chris A. Fotias, Russell A. Freeman, Duncan D. Campbell, Curtis R. Wilson, and Harold L. Barnett. Martin E. Morrison, Gunnar H. Rasmussen, and William A. Myers will serve ex officio.

*

Candidates Announce for USCF Offices

1972 marks the year of the triennial USCF elections for national office. Four candidates have so far been nominated: Frank J. Skoff, of Chicago, Illinois, for President; George Koltanowski, of San Francisco, California, and Russell W. Miller, of Yakima, Washington, for Vice President; and Martin E. Morrison, of Oakland, California, for Secretary. Statements from all candidates will appear soon in Chess Life & Review, and balloting will take place among the USCF directors in July and August.

AFFILIATE NEWS

If your affiliate is not listed, we have not received any material. Submit material on your affiliate's activities to the Editors (address on page 2).

*

BERKELEY CC . . . Completed on 17 December its six-round 2nd/3rd Classifier drawing a record number of 114 entrants. Winners in their respective sections were Louis Bignami and Padraic Neville (Experienced), Donald G. Kanzaki and Grayson W. Perkins (Intermediate), David W. Lewis and Sam H. Kernell (Novice), and Stephen M. Smith (Non-USCF). . . . The club is now engaged in its Master/Expert and Amateur Opens. Martin E. Morrison directs.

CONCORD CC . . . In a first-ever match, the club defeated the Chess Club at Rossmoor, Walnut Creek, 17½-4½, on 18 November. Concord was the first club ever to compete against the club at the nationally famous retirement community. According to Jim McKay, President of the Rossmoor Club, "We just need more practice." /Lynn C. Keck/

CASA ALVARADO CHESS CENTER . . . Held its 114th Anniversary First American Chess Congress Celebration Tournament during November and December, in which 24 participated. Winning first place in their respective groups were Michael R. Ewell (I), Alan Gwin (II), Steve Hand (III), and Robert McIntyre (IV). Theodore Yudakufski directed. /TY/

SAN JOSE STATE COLLEGE CC . . . On 29 November, the club hosted a practice match against the University of Santa Clara. Harry Radke, Paul Schure, and Steve Morford won for the host team, producing a 3-0 victory over Santa Clara. /SM/

SANTA ROSA CC . . . International Master George Koltanowski put on a rare local simultaneous exhibition at the Sonoma State College, 12 November. In addition to playing thirty boards simultaneously, the master engaged in a blindfold game, lectured, and gave a demonstration of his famous knight's tour. In the exhibition only Tom Henry managed a win. Prof. Dr. Clement E. Falbo, Jovan Floric, Lee Henderson, and Stephen Kornher drew. Henderson's game (B) follows:

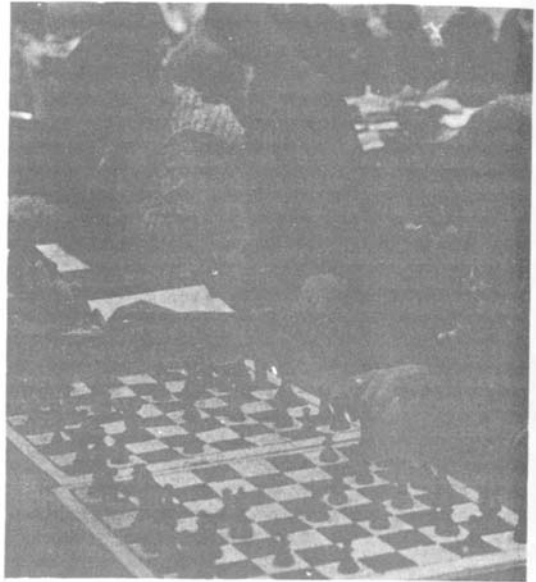


Intense concentration is depicted in this portrait of Kolty at work. (Photograph courtesy of Richard R. Shorman, CCCA Publicity Director.)

```

* No. 91. Pet- *
* roff's Defense. *
* 1 e4 e5 2 Nf3 *
* Nf6 3 N:e5 d3 4 *
*.Nf3 N:e4 5 d4 d5 *
* 6 Bd3 Bd6 7 0-0 *
* 0-0 8 c4 c6 9 *
* Nc3 N:c3 10 bc *
* Bg4 11 h3 Bh4 12 *
* g4 dc 13 B:c4 *
* Bg6 14 Nø5 B:e5 *
* 15 de Qa5 16 Qe1 *
* Qc5 17 Bb3 Bd3 *
* 18 e6 B:f1 19 *
* ef+ Kh8 20 K:f1 *
* Qd6 21 Kg2 Nd7 *
* 22 Bø3 b6 23 Rdl *
* Qe7 24 Bf4 Q:e1 *
* 25 R:e1 h6 26 *
* Bd6 Rfd8 27 Bc7 *
* Rf1 28 Bd6 Rfd8 *
* 29 Bc7 Rf1 30 *
* Bd6 drawn. *

```



UC DAVIS CC
 . . . In the
 29th Davis Rated
 Tournament,
 twenty players competed during October, November,
 and December for money and honor. Gary C. Pick-
 ler topped the A Section at 4-1, followed by Gene
 M. Alexander, also at 4-1, followed by James R. Conner. Three speed tournaments were also
 held. Winners were Thomas G. Dorsch, Don Napoli, and Pickler. [Sergius von Oettingen]

VISALIA-COLLEGE OF THE SEQUOIAS CC . . . When some of the students found it more conven-
 ient to play off tournament games in the library rather than in the usual place, the Student
 Union, sponsor Chris A. Fotias obtained permission to leave a couple of chess sets on reserve
 in the library for student use. It went well, so much so in fact that when kibitzers started
 gathering around the players, the players were shunted off to the more remote areas of the li-
 brary. . . . In a double round robin among ten active members of the COS Chess Club, three
 players are now in the lead as the tournament draws to a close; Jim Stokes, Mark Danner, and
 Rafael Arguedas. [CAF]

ITINERARY FOR ACERS EXCLUSIVE FAREWELL TOUR FOR CCCA
 (Continued from page 3.)

- Thur., 17 Feb., 7:30 p.m., ORINDA CC, St. Stephen's Epis. Ch., Via Las Cruces at St. Stephen's Dr.
- Fri., 18 Feb., 7:30 p.m., MARTINEZ CC, Sen. Citizens Cen., 1111 Ferry St.
- Mon., 21 Feb., 4:00 p.m., U. OF SANTA CLARA CC, Red Lounge, Benson Memorial Cen., U. of Santa Clara, Santa Clara.
- Tues., 22 Feb., 11:00 a.m., CHABOT COL. CC, Rm. 830, Chabot Col, 25555 Hesperian Blvd., Hayward
- Wed., 23 Feb., 7:30 p.m., SAN JOSE CC, San Jose Cen. YMCA, 1717 The Alameda.
- Fri., 25 Feb., 7:00 p.m., SANTA ROSA CC, Barrett Hall, Santa Rosa Jr. Col., 1501 Mendocino Ave.
- Thur., 2 Mar., 7:30 p.m., FREMONT CC, Cen. Pk. Comm. Cen., 40204 Paseo Padre Pkwy.
- Sat., 4 Mar., 1:00 p.m., WEST HILLS COMM. CC, West Hills Col., 300 Cherry Ln., Coalinga.
- Mon., 6 Mar., 7:30 p.m., SAN LEANDRO CC, Washington Sch., 250 Dutton Ave.
- Fri., 10 Mar., 1:00 p.m., SAN JOSE STATE COL. CC, Col. Union, San Jose State Col., So. Ninth St., San Jose.
- Wed., 15 Mar., 3:00 p.m., O. B. WHALEY ELEM SCH. CC, Bellarmine Coll. Prep.
- Fri., 17 Mar., 7:30 p.m., LIVERMORE CC, Basement, Carnegie Bldg., Fourth and "J" Sts.
- Fri., 24 Mar., 7:30 p.m., PLEASANT HILL CC, Field House, 233 Gregory Ln.
- Fri., 31 Mar., 7:00 p.m., SONOMA STATE COL. CC, Sonoma State Col., 1801 E. Cotati Ave., Rohnert Park.
- Fri., 14 Apr., 7:30 p.m., CONCORD CC, Concord Sen. Citizens Cen., 2974 Salvio St.
- Fri., 21 Apr., 6:30 p.m., BERKELEY CC, Palm Rm., Berkeley Cen. YMCA, 2001 Allston Wy.

- - -

WINNERS OF CHESS VOICE BEST GAMES CONTEST NO. 3
Exclusive Annotations by INTERNATIONAL GRANDMASTER LARRY EVANS

Larry Evans

Best Master/Expert

No. 87. Dennis G. Fritzing (2265), Redwood City--Robert Wolf (2045), Stanford. 5 September 1971, 22nd Annual California Open, Round V. Alekhine's Defense Reversed.

1 g3 d5 2 Bg2 e5 3 Nf3 e4 4 Nd4 Nf6 5 d3 c5 6 Nb3 ed 7 cd Be6 8 Nc3 Be7 9 0-0 Nc6 10 Bg5 b6 11 d4 c4 12 Nd2 Rc8 13 B:f6 B:f6 14 N:c4 dc 15 d5 B:c3 16 bc Bd7 17 dc B:c6 18 B:c6+ R:c6 19 Qa4 Qc7 20 Rfd1 0-0 21 Rd4 Rc8 22 Rad1 g6 23 Qa3 Re6 24 e3 Qe7 25 Qa6 Rc5 26 Rd7 Qf6 27 R:a7 Qf3 28 Rd8+ Kg7 29 Qb7 R:e3 30 Q:f7+ Q:f7 31 R:f7+ K:f7 32 fe Ra5 33 Rd2 Ke6 34 Kf2 Ke5 35 Kf3 Ra3 36 Rc2 h5 37 h4 Kf5 38 Rb2	R:c3 39 Rb5+ Kf6 40 Ke4 Ra3 41 R:b6+ Kf7 42 Rc6 R:a2 43 R:c4 Ra5 44 Rc7+ Kf6 45 Rc6+ Kf7 46 Rd6 g5 47 Rd5 Ra4+ 48 Rd4 Ra5 49 hg R:g5 50 Kf4 Rg4+ 51 Kf3 Rg5 52 e4 Ra5 53 Rd5 Ra3+ 54 Kf4 Kg6 55 Rd6+ Kg7 56 e5 Ra4+ 57 Kf5 h4 58 Rd7+ Kf8 59 g4 h3 60 Rh7 Ra3 61 g5 Rf3+ 62 Kg4 Re3 63 Kf4 Ra3 64 g6 Ra6 65 Kf5 Ra3 66 e6 Rf3+ 67 Ke4 Rg3 68 e7+ Ke8 69 g7 h2 70 drawn
---------------------------------------------------------------------------------------------------------------------------------------------------------------------------------------------------------------------------------------------------------------------------------------------------------------------------------------------------------------------------------------------------------------------	------------------------------------------------------------------------------------------------------------------------------------------------------------------------------------------------------------------------------------------------------------------------------------------------------------------------------------------------------------------------

Best Class A

No. 88. John Narcisi (1494), Oakland--Dr. Kent P. Bach (1828), San Francisco. 17 July 1971, CCCA's 2nd Annual USCF Regional Class Chess Tournament at Berkeley, Round I. Pirc Defense Reversed.

1 g3 e5 2 d3 d5 3 Bg2 c6 4 Nf3 Bd6 5 Bg5 Ne7 6 0-0 Be6 7 Nc3 Nd7 8 e4 f6 9 Bd2 Nf8 10 Qe2 d4 11 Nbl g5 12 a4 Qd7 13 Na3 Neg6 14 Nc4 Be7 15 Ba5 h5 16 Nel h4 17 Bf3 Kf7 18 g4 Nf4 19 Qd1 h3 20 Kh1 N8g6 21 Rg1 Nh4 22 Bd2 Rag8 23 Be2 Nhg2 24 Nf3 Bd6 25 N:d6+ Q:d6 26 B:f4	gf 27 Nel Nh4 28 f3 Qf8 29 Bf1 Ng6 30 Qd2 Ne7 31 Qa5 a6 32 Qb6 Bc8 33 Qc7 Qg7 34 Be2 Qg5 35 c3 Qh4 36 Bd1 Rd8 37 Bb3+ Ke8 38 Rf1 Rh7 39 Qb6 Rg7 40 Bd1 f5 41 ef Nd5 42 Qc5 B:f5 43 gf Ne3 44 Be2 Bd5 45 Qa7 Qg5 46 Rcl Qg2+ 47 N:g2 hg+ 48 Kgl gfQ++
----------------------------------------------------------------------------------------------------------------------------------------------------------------------------------------------------------------------------------------------------------------------------	------------------------------------------------------------------------------------------------------------------------------------------------------------------------------------------------------------------------------------------------------

Best Class B

No. 89. Alan G. Bodine (1668), Berkeley--Edward S. Yeung (1736), Berkeley. 23 July 1971, Berkeley Chess Club's Class Round Robin, Round V. Benoni Gambit.

1 d4 Nf6 2 c4 c5 3 d5 b5 4 cb a6 (a) 5 Ba B:a6 6 Nf3 (b) d6 7 g3 g6 8 Bh3 (c) Bg7 9 0-0 0-0 10 Nc3 Nbd7 11 Rel (d) Nb6 12 e4 (e) Nfd7 13 Bf4 Nc4 14 Qcl Nc5 15 N:e5 N:e5 16 B:e5 B:e5 17 Bf1 B:f1 18 K:f1 Qa5	19 f4 (f) Bd4 20 Ne2? (g) Qb5 21 Kg2 (h) B:b2 22 Qbl Rfb8 23 a4 R:a4 (i) 24 R:a4 Q:a4 25 Nc3 Qa7 26 Qc2 B:c3 27 Q:c3 Qa2+ 28 Kf1 Rb2 29 Qf3 R:h2 30 Re2 R:e2 31 Q:e2 Qbl+ 32 Kf2 Qb4 33 Qc2 c4 34 Ke2 Kg7 35 Kf3 Qb3+ 36 resigns
---------------------------------------------------------------------------------------------------------------------------------------------------------------------------------------------------------------	----------------------------------------------------------------------------------------------------------------------------------------------------------------------------------------------------------------------------------

(a) The risky Benk0 Gambit. It's doubtful that Black's Q-side pressure compensates for the pawn, but this indicates Black is ready for a fight and is good psychology.

(b) Okay. But it's better to play Nc3 first and reserve the option of developing this knight to h3 or e2 as circumstances dictate. The least committal move is generally preferable, since it is more flexible.

(c) No so bad as it looks, although Bg2 is more natural. In some variations the bishop on h3 stops ...Ng4.

(d) A faulty idea if White intends to follow it up with e4. Correct is 11 Rbl, followed by b3 to develop the Q-side.

(e) But now 12 Rbl restricts the counterplay. The text only weakens d3 and f3.

(f) Black's strong bishop already compensates for his pawn. The text is too loosening. Correct is Kg2, followed by Re2, awaiting developments.

(g) Walking into a fatal pin. Again Kg2 is necessary.

(h) Loses. The only chance to hold a draw is 21 a4 Q:b2 22 Q:b2 B:b2 23 Ra2.

(i) Wins. But so does 23...Qb3 24 Ra2 c4 (25 Ncl B:c1!). A thematic game by Black, in which White's insipid strategy was forcefully punished.

Best Classes C/D/E/Unrated

No. 90. Frederick-W. Scholz (Unrated), Berkeley--Michael E. Koblentz (1568#), Berkeley. 10 September 1971, Berkeley Chess Club's Summer Random. Opening: Alekhine's Defense.

1 e4 Nf6 2 e5 Nd5 3 c4 Nb6 4 d4 d6 5 f4 de 6 fe Nc6 7 Be3 Bf5 8 Nc3 e6 9 a3 Be7 10 Nf3 f6 11 Be2 0-0 12 0-0 fe 13 de Bg4 14 c5 Nd7 15 Nd4 R:f1+ 16 K:f1 B:e2+ 17 Q:e2 N:d4 18 B:d4	Qf8+ 19 Kgl B:c5 20 Qc4 B:d4+ 21 Q:d4 Qc5 22 Q:c5 N:c5 23 Rdl a5 24 b4 ab 25 ab Na6 26 Rd7 N:b4 27 R:c7 Ra1+ 28 Kf2 Rcl 29 Ke3 R:c3+ 30 R:c3 Nd5+ 31 Kd4 N:c3 32 K:c3 Kf8 33 Kc4 Ke8 34 resigns
------------------------------------------------------------------------------------------------------------------------------------------------------------------------------------	-------------------------------------------------------------------------------------------------------------------------------------------------------------------------------------------------

BUSINESS PROCEEDINGS OF THE CCCA
By SALEH MUJAHED, CCCA SECRETARY



The annual meeting of the CCCA was held on Friday, 7 January 1972, in the Palm Room of the Berkeley Central YMCA, 2001 Allston Way, Berkeley. The meeting was called to order at 8:22 p.m. by the Chairman, Martin E. Morrison.

The total attendance for the meeting was as follows: Edward J. Delgado (Berkeley CC), Martin E. Morrison (Berkeley CC, UC Division), Wesley A. Nelson (Livermore CC), Leonard F. Trottier (Richmond CC). Four of 43 affiliates, four members.

It was adopted by general consent that the minutes of the previous meetings (9 July and 17 September 1972) be approved as published in Chess Voice, the CCCA's official organ.

It was adopted by general consent THAT THE SAN JOSE STATE COLLEGE CHESS CLUB, UPON THE APPLICATION OF STEVEN N. MORFORD, PRESIDENT, THE SAN LEANDRO CHESS CLUB, UPON THE APPLICATION OF ROBERT B. MANNERS, PRESIDENT, THE WEST HILLS COMMUNITY CHESS CLUB, UPON THE APPLICATION OF WARREN W. MC CLINTOCK, SPONSOR, AND THE O. B. WHALEY ELEMENTARY SCHOOL CHESS CLUB, UPON THE APPLICATION OF LLOYD V. ROGERS, FACULTY ADVISOR, BE AFFILIATED TO THE CCCA.

The Treasurer, Mr. Trottier, gave the following

REPORT OF THE TREASURER OF THE CCCA

FOR THE PERIOD 17 SEPTEMBER 1971 TO 7 JANUARY 1972

<u>Receipts.</u>		<u>Disbursements.</u>	
Balance on hand 17 September 1971	\$ 187.29	USCF memberships transmitted	\$ 72.00
Bimonthly assessment of affiliates	\$181.10	Editors' Expenses	200.00
Fines for late assessment payment	6.00	P. O. Box rent	2.70
USCF memberships received	72.00	Clock sales retained	757.50
Clock sales	804.50	CCCA Championship expenses	10.50
Charter use	15.00	Stamps, envelopes, and paper	9.45
		Balance on hand 7 January 1972	*213.74
		Total	\$ 213.74
	\$1265.89	*League Fund \$32.10, General Fund \$181.64.	
		CCCA members on 7 January 1972: 481.	

The League Director, Mr. Nelson, reported on the status of the CCCA's 1971-72 League with 21 teams playing and another ten having registered for the late sections. \$51.50 in team fees has been paid.

The Postal Chess Director, Mr. Delgado, reported that the CCCA's postal chess team, consisting of Michael G. Donald, Bruce P. Keeney, Michael R. Devitt, and Edward J. Delgado, is currently engaged in matches with the San Diego Chess Club and a North Dakota team.

The Chairman of the Standing Clock Committee, Mr. Trottier, gave the following

REPORT OF THE CCCA STANDING CLOCK COMMITTEE

FOR THE PERIOD 17 SEPTEMBER 1971 TO 7 JANUARY 1972

60 clocks sold	\$804.50	Clock Profit	\$47.00
Clock sales retained	757.50	Clocks sold to date: 340.	

It was adopted by general consent THAT ALL PRESENT OFFICERS BE RE-ELECTED.

It was moved by Mr. Morrison, discussed, and adopted by general consent THAT THE 1970-71 LEAGUE FUND BE CLEARED FROM THE BOOKS BY PAYING TO THE PREVIOUS LEAGUE DIRECTOR, MR. BARNETT, \$12 FOR FINAL EXPENSES, THE AMOUNT REMAINING TO BE ADDED TO THE GENERAL FUND, AND THAT ANY REMAINING EXPENSES AND DUTIES FROM THE 1970-71 LEAGUE BE HANDLED BY THE CURRENT LEAGUE DIRECTOR FROM CURRENT LEAGUE FUNDS.

It was moved by Mr. Nelson, discussed, and adopted by general consent THAT THE BYLAWS BE AMENDED BY STRIKING OUT "SEPTEMBER" IN ARTICLE IV, SECTION ii, AND INSERTING "JULY," AND BY STRIKING OUT "OCTOBER" IN ARTICLE V, SECTION i, AND INSERTING "SEPTEMBER."

It was moved by Mr. Morrison, discussed, and adopted by general consent FIRST, THAT THE INITIAL LEAGUE MAILING BE MADE AT THE BEGINNING OF SEPTEMBER AND THAT THE LEAGUE START AT THE BEGINNING OF NOVEMBER, WITH LATE SECTIONS STARTING AT THE BEGINNING OF JANUARY; SECOND, THAT THE MAILING FOR THE SUMMER LEAGUE BE MADE AT THE BEGINNING OF APRIL AND THAT THE REGULAR LEAGUE RULES BE USED IN SO FAR AS THEY APPLIED, THE LEAGUE DIRECTOR BEING EMPOWERED TO MAKE NECESSARY MINOR ADJUSTMENTS.

It was adopted by general consent that the meeting adjourn. The Chairman declared the meeting adjourned sine die at 9:45 p.m.

The Chairman, in accordance with Article V, Section i, of the CCCA Bylaws, has announced the CCCA General Membership Meeting in April for Friday, 14 April, 8:00 p.m., at the Berkeley Chess Club, Berkeley Central YMCA, 2001 Allston Way, Berkeley.

*

In accordance with Article IV, Section F, of the recently amended Bylaws of the California State Chess Federation, the Tournament Subcommittee of the CCCA's Standing Tournament and Club Relations Committee, in consultation with the Chairman of the Central Section of the CSCF's Standing Tournament Committee, has adopted unanimously the following

Procedure for Determining Central California's Two Qualifiers
To the California State Chess Championship: The Calpoint System

- (1) Berths to the California State Chess Championship shall be awarded to two qualifiers under the Calpoint System from Central California. The System for Central California shall be administered by the Chairman of the Central Section of the CSCF's Standing Tournament Committee.
- (2) Players must be members of the CSCF before entering a Calpoint tournament in order to acquire points for that tournament. No Calpoint tournament may require as a condition of entry any membership other than USCF and CSCF.
- (3) Calpoints for Central California are awarded at all the USCF-rated weekend tournaments sponsored by the CCCA or its affiliates. Calpoints earned at such tournaments shall be registered only when certified to the Subcommittee by the organizers of the tournament.
- (4) In such tournaments, those who are CSCF members shall accumulate Calpoints as follows. All winners (clear or tied for first) shall receive fifteen Calpoints; all second-place finishers shall receive ten Calpoints; third-place finishers, eight; fourth-place finishers, five; and fifth-place finishers, three. Calpoints shall be carried only to a total of five players. E.g., if there are five players tied for first, second, and third places, no fourth or fifth place Calpoints shall be given; if six players tie for first, all six shall receive fifteen Calpoints each, but no further Calpoints shall be given.
- (5) Calpoints for Central California shall be totaled from 1 October of the preceding year to 30 September of the current year for the year's California State Chess Championship. The two players who have accumulated the highest total of Calpoints, who accept the responsibility of participating in the Championship, and who seem to the Subcommittee to be able to meet their responsibilities of participation and to reflect a high degree of chess ethics shall be declared qualifiers from Central California.
- (6) The \$50 entry fee for each qualifier shall accrue equally from all CCCA-sponsored or co-sponsored tournaments held during the period of Calpoint accumulation for the year's Championship.
- (7) According to a policy of the CSCF, all qualifiers, if they complete their schedule of play, receive a prize to cover at least part of their expenses.

CCCA'S 1971-72 LEAGUE: INTERIM RESULTS
 By WESLEY A. NELSON, CCCA League Director

<u>USCF CATEGORY</u>				<u>INDEPENDENT CATEGORY</u>			
<u>Division</u>	<u>Team</u>	<u>R1</u>	<u>Total</u>	<u>Division</u>	<u>Team</u>	<u>R1</u>	<u>Total</u>
North	1 Orinda	W3	1	North	1 Berkeley	D5	$\frac{1}{2}$
	2 Concord A	-	0		2 Concord A	W4	1
	3 Berkeley C	L1	0		3 Concord B	-	0
	4 Berkeley D	-	0		4 Martinez	L2	0
1 Concord B	L3	0	5 Richmond		D1	$\frac{1}{2}$	
Central	2 Livermore B	W4	1	South	1 San Jose State	W3	1
	3 Berkeley A	W1	1		2 Fremont	W4	1
	4 Berkeley B	L2	0		3 Livermore	L1	0
	1 San Jose State	W2	1		4 Walnut Creek	L2	0
South	2 U. of Santa C.	L1	0				
	3 San Jose	W4	1				
	4 Livermore A	L3	0				

NEWS NOTES

USCF MASTERS AND EXPERTS should take special note of the 2nd Annual Louis D. Statham Masters and Experts Chess Tournament, to be held in Lone Pine, 12-18 March, following the National Open in Sparks, Nevada. The record \$5500 prize fund will be awarded as follows: \$2000 1st, \$1250 2nd, \$750 3rd, \$500 4th, \$300 5th, \$200 6th, \$100 each 7th-11th. All rated masters, senior masters and grandmasters, and rated experts under 21 on 1 March are eligible. No entry fee. Isaac I. Kashdan (2231 Overland Avenue, West Los Angeles, CA 90064) will direct the seven-

PROBLEMS COLUMN

By RICHARD R. SHORMAN, CCCA Publicity Director

Chess Voice Problem-Solving Contest No. 17

Solutions (the first move only), preferably in algebraic notation, must be received by the Editors (address on page 2) by 15 February. The winner will be the entrant who submits the correct solutions to the most problems. Ties will be broken by lot. The contest is open to all Chess Voice readers.

The prize for Contest No. 17 will be the tournament book of the 1963-64 USA Championship, in which Robert J. Fischer wrested the title from Larry Evans.

NO. 93

NO. 94

NO. 95

LEAST DIFFICULT

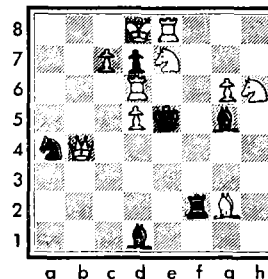
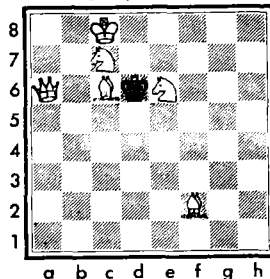
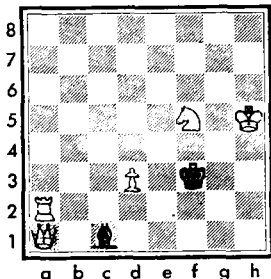
MORE DIFFICULT

MOST DIFFICULT

White to play and mate in 2.

White to play and mate in 2.

White to play and mate in 2.



Winner of Contest No. 16

From a record number of entrants only two submitted correct solutions to all three problems, Paul Schure, of San Jose, and William Lanam, of Alamo. Mr. Schure received by lot the prize for the contest, W. H. Cozens's new book, The King-Hunt in Chess.

Solutions to Contest No. 16

No. 90: f4! A false lead is 1 Rf4? (to answer 1...Rf4 with 2 Rh2 and 1...Bf4 with 2 Be6, but 1...Qa2! foils White's plans).

No. 91: ef (e.p.)! (Black's last move, ...f5, was forced.) If 1 Nf6?, hoping for 1...gf or 1...cd, in order to mate with 2ef and 2 ed respectively; then Black has a clever refutation in 1...c6! It is possible to show that Black's last move f7-f5. The only other moves which appear possible at first glance are (1) Kf7-e6, (2) Ke7-e6, (3) cd, or (4) fg. The king could not have been on f7, or the knight would have no square from which to move to h8+, nor could it have been on e7, or there would be no square from which the bishop could move to d6+. Only two white pieces have been captured, so only two black pawns can be off their original files. These are necessarily the most advanced of the two doubled pawns. The pawn on d5 must have been originally on the e-file, as it could not have made two captures to bring it from the b-file. Necessarily, then, the pawn on f5 is on the correct file, as it cannot have been the e-pawn. Accordingly, the pawn on g6 must have come from the h-file. However, neither the pawn on d5 nor that on g6 could have made a capture on the previous move, as the square from which they must have come is occupied. Therefore, Black's last move could only have been f7-f5, allowing the en passant capture.

No. 92: Ne5! Forcing Black into zugzwang with even more plays at his disposal than in the initial position (1...d5, 1...f5, and 1...N any) significantly upgrades the overall quality of this highly resistant two-mover. Some tries that miss the mark are 1 Kc3 b2!; 1 Ng7 e6!; 1 Qb6 d5; 1 Ral Kf5; and, of course, 1 Rd4 is illegal because of the pin.

Classified Ads

PRIVATE OR GROUP CHESS LESSONS BY USCF MASTER JOHN GREFE. All classes of players welcome. Call EX 5-9515 and leave name and phone number with Raymond Conway, Club Director (after 8 p.m.)

HAVE EXTRA PIECES FOR PLAYER'S CHOICE SETS. Two black pawns and two black knights. 3 1/2" king, 1 5/8" base, felted, heavily weighted. \$1 each postpaid from Martin E. Morrison (address on page 2).

THE WILD GRUENFELD
By LOUIS BIGNAMI, USCF Expert

After 1 d4 Nf3 2 c4 g6 3 Nc3 d5 4 Bf4 Bg7 5 e3 0-0, several interesting lines spring from White's capture of the sacrificed pawn after 6 cd N:d5 7 N:d5 Q:d5 8 B:c7. The older lines preferred by Botvinnik, among others, that rose from 8...Na6 9 B:a6, led to generally level games with Black's bishop pair and attack balancing White's advantage in pawn structure. See Fairhurst-Pachman, Dublin 1957 (MCO 10) and Najdorf-Unzicker, Goteborg 1955 (Theory and Practice at 619). The accepted main line of this variation is Gligoric-Flores, Mardelplata 1955, 9 B:a6 Q:g2 10 Qf3 Q:f3 11 N:f3 ba 12 Rcl a5 13 Rgl a4 =.

The major alternative at move 8 for Black (8...Nc6) leads almost by force, since alternatives for White yield equality at best, to the truly wild gambit line, i.e., 8...Nc6 9 Ne2. It is important to note that the natural 9 Nf3 is clearly in Black's favor after 9...Bg4 10 Be2 Rac8 11 Bg3 Qa5+ 12 Nd2 B:e2 13 Q:e2 e5 14 de Rfd8!!

After 9...Bg4 10 fe B:fe! 11 gf Q:f3 12 Rgl Q:e3 13 Bf4 Qe4 14 Bg2 Qf5, Black has two pawns, the central files after e5, and the attack on the king for the sacrificed piece. What gambit player could want more? Bohatyrchuk-Savonov, Moscow 1940, continued 15 Qd2 e5 16 B:c6 ef 17 Bf3 Rfe8, 18 Kf2 Re3 19 Rg4 Rae8 20 Rag1 Bh6 21 Rh4 Rd3 22 Qb4 R:f3+ (if 23 K:f3, 23...Qe4+ 24 Kf2 Q:e2++) 23 Kel R:e2+ 24 K:e2 Qd3+ 25 Kel Re3+ 26 Kf2 Qe2++.

However, at the critical point in Loftsson-Addison, Cal 1963, Loftsson found an improvement 15 B:c6 bc 16 Qd2 Red8 17 Rg5 Qe5 18 0-0 e5 19 Qe3 Qd5 20 B:e5 f6 21 B:f6 Qc4+ 22 Qc3 Q:c3 =, and with the absence of the queens was able to draw.

If White will not fight for the extra pawn (with 8 B:c7), Black can proceed actively, if a tactical player, with ...c5, or, if a positional Stoic, reach a safe, if restricted position, with ...c6.

It would seem that the above lines, as well as lines examined in MCO, PCO, Theory and Practice, Schach, and elsewhere, but not reported here because of space limits, lead to excellent practical chances for Black. Any questions, comments, or games concerning the Gruenfeld Gambit or its associated lines would be appreciated. If there is sufficient interest, a later note on the exchange variation of the Gruenfeld will be presented.

SPECIAL REPORT ON THE 1971 CALIFORNIA STATE CHESS CHAMPIONSHIP
By CRAIG N. BARNES, Central California Qualifier

Twenty-year-old Kim S. Commons, of Los Angeles, is the 1971 California State Chess Champion as a result of his victory at the finals held at the San Fernando Valley Chess Club in Sun Valley. Commons, who led throughout the event, assured himself the title by defeating sixteen-year-old Craig N. Barnes in the final round, in a game that had its share of fireworks. Commons's only loss was to USCF Senior Master James E. Tarjan, of Berkeley, who finished second. Commons's rating is reportedly now over 2400, as his performance in this event goes to prove.

Unfortunately, this year's event was marred by the absence of four of the qualifiers. Last year's co-champion Charles Henin apparently has quit chess because of his poor performance at the US Open. Former World Junior Champion Julio A. Kaplan has not been heard from at all. Tibor Weinberger withdrew after his second-round, twelve-move loss to Commons. Peter Grey, of San Francisco, apparently could not make it down to the finals. The total prize fund was unchanged.

The schedule called for the northern players and the southern players to play amongst themselves in the few weeks preceding the finals, on 7-9 January, and then for the contingents to play each other at Sun Valley. The absence of the four players made for an easier schedule at the finals.

Gordon S. Barrett, of Granada Hills, directed the event for the California State Chess Federation. USCF Master John Grefe, of Berkeley, will be writing a book covering the event.

This was my first time in an invitational event, and it was quite an interesting experience. I wish to thank the CCCA for the opportunity of playing in this event, and I am looking forward to playing again in the future. I feel I played as well as could be expected, but was a little disappointed by my final result, having missed a few opportunities in my games. It certainly would have been a more interesting and better tournament had it not been shortened by the absence of some of the players.

EDITORS' NOTE. A complete crosstable of the Championship will be found on page 16. A game between the new state champion, Kim S. Commons, and John Grefe, both USCF Masters, will be annotated by US Senior Master Jude F. Acers in the next issue. 7

--

***UNDERSTANDING CHESS LAWS AND TOURNAMENT DIRECTION:
FIDE COMMISSION ISSUES RECORD NUMBER OF RULES INTERPRETATIONS***
By MARTIN E. MORRISON, Member, USCF Tournament Director Certification Committee

Questions and comments from readers on chess laws and tournament direction are welcomed. Contact the columnist at P. O. Box 1622, Oakland, CA 94604; (415) 582-1973.

*

Responding to a rapidly growing interest in clarifying the rules under which tournament play is conducted, the Permanent Commission of the FIDE (World Chess Federation) for the Laws of the Game considered a flood of requests for interpretations of the Laws of the Game of Chess at the 1971 FIDE Congress, held August/September in Vancouver. In my last column I discussed the amendments to Article 8, the touch-move rule, adopted by the Congress. In this column I shall review the interpretations of the Laws made by the Commission, entrusted with the responsibility for interpretation of the laws of chess.

1. The first case presented to the Commission, obviously the situation which had occurred in actual tournament play between Najdorf and Ree at the Wijk Aan Zee, January 1971, went as follows. A player wrote on his score sheet a move indicating promotion of a pawn to a queen and afterwards, neglecting to exchange the pawn immediately for a queen, punched his clock. The opponent, who was not present, on returning to the board protested because the player had not immediately exchanged the pawn, though the player had told him the piece was a queen. The tournament director decided to restore the player's clock to the position it had before the move was made, and the player had to make his promotion move again, as it was obvious that he intended to promote that pawn to a queen. Then the game was resumed in the normal way. The Commission confirmed the decision of the tournament director.

My Comment: At Wijk An Zee Najdorf, the opponent, claimed the right to state which piece should be made--a claim which has no validity in the laws. The chief tournament director Slavekoorde decided that the game be resumed with Ree, the player, making a queen and Najdorf having been compensated for the time lost. Najdorf protested against this decision, which seems the soundest to me, as the Commission itself (see no. 2) later indicated, since Ree was in violation of Article 14.3 by starting his opponent's clock before he had completed his move. Article 14.6 specifically covers this promotion problem: "If the game has to be interrupted for some reason for which neither player is responsible, the clocks must be stopped until the point has been dealt with, . . . if the piece which a player has declared he wishes to exchange for one of his pawns has reached the end of a file and it is not immediately to hand." We must assume that there was some difficulty which prevented Ree from making an immediate exchange; otherwise, there was no basis at all for his action.

2. The Commission then proceeded to make an interpretation of Article 6c with respect to the above case. "In a competition, if a new piece is not immediately available, the player should ask for the assistance of the tournament controller before making his move. If this request is made and there is any appreciable delay in obtaining the new piece, the tournament controller should stop both clocks until the required piece is given to the player having the move. If no request is made and the player makes his move and punches his clock without exchanging the promoted pawn for a new piece, he is breaking the laws of chess and should be given a warning or a disciplinary penalty, such as the advancement of the time on his clock. In any case, the opponent's clock should be set back to the time it registered immediately before the player punched his clock, the position on the board should be re-established to what it was before the player moved his pawn and the clock of the player having the move should be started. The player should then make his move correctly, in the manner specified in Article 6c."

3. For a situation which the reader is free to imagine for himself, the Commission stated: "If a player shakes hands with his opponent, this is not to be considered as equal to resigning the game as meant in Article 11.2."

4. The Commission this year for the first time answered a question concerning Article 6 which has plagued many tournament directors, what to do when a player castles improperly by moving the rook first. "If a player in castling starts with touching the Rook, he should receive a warning from the tournament controller, but the castling shall be considered valid. If a player intending to castle, touches King and Rook at the same time and it then appears that castling is illegal, the player has to move his King. If the King has no legal move, the fault has no consequences."

My Comment: The Commission did not discuss what to do if a player repeats the offense, but some disciplinary penalty might be imposed at the tournament director's discretion.

5. The Commission gave an interpretation of Article 14.5 and 6, that drafted by Kenneth Harkness and already adopted by the USCF at the 1970 Boston Business Meetings. It is a consider-

able improvement over the old precedent, established in the 1954 USA-USSR Match (Reshevsky-Smyslov), that any delay in reporting a defect cannot be remedied by an adjustment of time. "With regard to Article 14.5 and 6, the tournament controller should endeavour to check all clocks periodically to make sure that they are operating properly. A clock with an obvious defect should be replaced and the time used by each player up to the moment when the game was interrupted should be indicated on the new clock as accurately as possible. If one unit of the defective clock had stopped, the corresponding unit of the new clock should be advanced so that the total time indicated by the two units is equal to the time the session of the competition had been in progress. If both units had stopped, the difference between the total of the times registered by the defective clock and the elapsed time of the session should be divided in half and each unit of the new clock advanced by this amount. If any of the above clock adjustments would result in an indication that a player had exceeded the time limit, or if the time used by each player cannot be accurately determined, the tournament controller may set the hands of the new clock in accordance with his best judgment."

6. The Commission gave an interpretation of Article 17a.2 and 14.4 to cover the specific situation of a player who wishes to claim a draw by repetition of position after his last move of a time-control period. "A player who is due to make his last move of a time-control period and who claims a draw in the manner prescribed in a) and b) of Article 12.3, must make his last move on the chessboard, but without stopping his clock. If the tournament controller believes the player had sufficient time to stop his clock before the flag falls, he may rule that the player had completed his move, the provisions of Article 14.4 not being applicable in this situation. The tournament controller should then investigate the claim of a draw and if the claim is found to be incorrect, the game shall be continued or adjourned, even if the claimant's flag has fallen."

In other action the Commission officially recommended that the use of the algebraic chess notation be promoted as much as possible and that, in particular, young chess players should be stimulated to use the algebraic notation.

My Comment: The Commission has evidently seen the need for a simple, universal system of notation, a need bolstered by the appearance of influential international magazines, such as Chess Informant and The Chess Player, using the algebraic notation. Serious players in English-speaking countries now need to know the algebraic system, as more and more books are issued in this system. Fully one-third of the space and cost of publication are saved with the use of algebraic notation. Practically all the countries in the world, outside of the English-speaking ones, use this system, and now the Chess Federation of Canada has announced its own conversion to the use of this system. Players unfamiliar with algebraic notation would be wise to heed the recommendation of the Commission to learn and use this now official system of notation.

*

Again I wish to thank Fred Cramer, FIDE Vice President, Kenneth Harkness, Member of the Permanent Commission, Russell W. Miller, USCF Regional Vice President, and Robert C. Eldridge, FIDE Councillor for Canada, for supplying me with material from the Congress.

***** (paid advertisement) *****

THE CHESS PLAYER

is

a COMPLETELY NEW MONTHLY CHESS MAGAZINE produced by Britain's fastest growing chess publisher and edited by International Master David Levy.

GAMES: At least 2,500 of the best, with notes by grandmasters and other leading writers from all over the world.

1 e4 c5 2 f3 a6 3 d4 cxd4 4 a4 d6 5 a3 d6 6 1c4 ♖b6
 1-6 (7/71-12/71) 7-12 (1/72-6/72) \$ 7.50
 1-12 (7/71-6/72) 7-18 (1/72-12/72) \$15.00
 1-18 (7/71-12/72) \$22.50

For AIR MAIL add \$2.00 for each six months.
 Highly recommended. ALL GAMES ARE ANNOTATED!

HELP. We need donations to our Prison Chess Club Fund. Please send a dollar or two. Don't be ashamed if you can't afford more. We need YOUR dollar. Deductible from your Income Tax. Make check payable to CLEVELAND CHESS FOUNDATION, Box 5268, Cleveland, OH 44101. Thanks! James R. A. Schroeder.

GUESS WHO'S GOING TO THE WORLD CHAMPIONSHIP!

Robert Fischer, USA, will play a match with the present champion, Boris Spassky, USSR, sometime in the spring of 1972. What's the best way to follow this historic event? Subscribe to:

-64-. WEEKLY Russian chess newspaper, \$4 per year air-mailed. Fastest source of the match games, edited by Petrosian.

██████████. Fastest growing magazine in the world. 20 issues per year, more than 1000 games, algebraic, from Switzerland. \$7 per year regular mail, \$10 air-mailed. Send 50¢ for sample copy.

CHESS. \$7.50 air-mailed from England. Monthly. Send 70¢ for sample copy.

EUROPE ECHECS. French monthly. \$7.50 per year. Send 70¢ for sample copy.

ORDER FROM TRU-TEST CO., Box 5268, Cleveland, OH 44101. Send name and address for our list of books for sale.

LATEST OFFICIAL USCF RATINGS OF CCCA MEMBERS

This list includes the latest official USCF ratings of all CCCA members as of the 1 December assessment period. This list reflects every event played through 30 July 1971 and published in the "USCF Annual Rating List" (January 1972 issue of Chess Life & Review) or an earlier rating list. Notify the Editors (address and telephone number on page 2) of any additions or corrections.

SENIOR MASTER 2400 & above, MASTER 2200-2399, EXPERT 2000-2199, CLASS A 1800-1999, CLASS B 1600-1799, CLASS C 1400-1599, CLASS D 1200-1399, CLASS E Below 1200. * indicates provisional rating based on 4-16 games. Such ratings are less reliable than established ratings. Players who have played less than 4 games are not listed.

Total number of CCCA members with USCF ratings: 243 (42%).

TOP TEN: #1 J Acers 2392, #2 J Iwashita 2183, #3 C Barnes 2173, #4 C Maddigan 2100, #5 Edward Rosenthal 2099, #6 S von Oettingen 2073, #7 G Rey 2054, #8 M Weber 2050, #9 B Kraft 2044, #10-11 E Alsasua, G Temme 2041.

BECHTEL CC (6): R Aguilar 1925*, E Gines 1674*, A Hanak 2034, A Saguisag 1930, R Saguisag 1932, R Tacorda 1665*. BERKELEY CC, INC. UC DIV. (69): L Bignami 1901, R Blauner 1672*, A Bodine 1611, J Buff 1769, D Burleigh 1567, D Ceponis 1551*, R Clipson 1703, E Delgado 1297, S Dinerstein 1714, M Donald 1629, C Ensey 1416, R Ettleson 1034*, J Feinberg 1141*, S Felgar 1617*, S Fischer 1627, W Forward 1311*, J Gardner 1637*, K Halligan 1435, R Hansen 1768, G Harcus 1303, G Harris 1854, N Harris 1213*, B Hasson 2024, B Hildreth 1307*, M Hulse 1175*, D Kanzaki 1455*, J Kasprisk 1431, B Keeney 1740, M Koblentz 1586, K Kuniyuki 1549*, F Leffman 1692, D Lewis 1663, D Lock 1496*, M Maloney 1572, H Mayer 1974, W Mealiffe 1695*, P Mei 1210*, E Meyers 1746, D Miller 1160, P Neville 1842, R Newman 1602, C Nyberg 1370*, J Osborne 1908*, L Osborne 1416, R Paige 1133*, W Patch 1309, G Perkins 1693*, L Petty 1619, P Prochaska 1721, J Quinn 1211*, D Rapoport 1941, G Rey 2054, R Rice 1417*, W Robbins 937*, D Robinson 1564, Edward Rosenthal 2099, D Sagan 1614, D Santos 1777, F Scholz 1744*, R Segal 1675, R Shiflett 1788, J Sjogren 1767, P Stokes 1597, I Strauss Jr 1584, D Thomson 1760, J Toulouse 1822, C Vail 1602, M Werner 1847*, J Wu 1390. CASA ALVARADO CHESS CENTER (20): D Anderson 1368, J Anderson 1381, R Atkinson 1542, D Draper 1797, M Ewell 1931, S Fuhs 1173*, G Gerstl 1382, K Grover 1196, P Grover 1308, A Gwin 1712, S Hand 1282, D Henry 1772, H Howes 1654, B Lainson 1953, A Lindberg 1288*, D Maxwell 1977, J Reynolds 1297*, K Roberson 1662, T Russo 1438*, C Tanaka 1720. CHABOT COL. CC (4): B Beadling 1257*, A Fernandez 1660, R Weinberg 1791*, T Wilkerson 1550*. COL. OF THE SEQUOIAS CC (1): C Fotias 1651. CONCORD CC (12): J Eliason 1368*, G Garcia 1640, R Guzman 1647*, G Harcus 1303, L Keck 1375*, K Miller 1717, J Moore Jr 1622, E Nelson 1263, W Noble 1940, F Ulrich 1737, C Vail 1602, J Weiler 1512. DVI CHESS INT. GROUP (3): H Chappel 1909, C Comstock 1974, W Romero 1859*. EVERYMAN ATHLETIC CLUB CC (3): D Critser 1615*, L McLaughlin 1268*, J Rowell 1830. FREMONT CC (2): B Beadling 1257*, H Poschmann 1710. HAYWARD CC (5): E Bartholomew 1613, G Jones 1422, K Lawless 1808, E McNally 1870, J Rogers 1622*. LIVERMORE CC (12): H Barnett 1710, G Boer 1826, C Giallanza 1154*, F Giallanza 1255*, K Giallanza 1419, W Nelson 1843, D Peltier 1399*, G Roust 1888, B Rozsnyai 1589, J Shearer 2024, D Smith 1818, K Trigger 1385. MARIN CC (7): K Burns 1604, T Hansen 1438*, D Hubbard 1431*, B Kraft 2044, J Nitzberg 1491, L Post 1839, R Williams 1062*. MARTINEZ CC (3): R Headrick 1553*, D Jacobson 1637, R Nace 1684*. MONTEREY PEN. CC (3): R Atkinson 1542, M Ewell 1931, W Kennedy 1409. OAKLAND CC (14): J Acers 2392, C Barnes 2173, J Gerhardt 1697*, G Kobliiska 1705, L Lane 1229*, M Lee 1480, R Lee 1454, C Maddigan 2100, E Meyers 1746, R Ng 1834, S Quen 1925, F Warren 1341*, G Weber 1756, M Weber 2050. ORINDA CC (5): A Boyd 1817, D Campbell 1674, J Jaffray 1880, D Sherman 1478*, D Stone 1702. RICHMOND CC (3): P Brown Jr 1529, D Claudio 1707*, L Trottier 1543. SAN JOSE CC (34): W Adams 1954, W Allen 1848, E Alsasua 2041, R Belcher 1501*, T Burn 1786*, M Carney 1440*, A Critchlow 1787, Fred Crofut 1833, R Delashmutter 1622, M Gaze 1766, G Golphenew 1765*, D Gordon 1645, R Gordon 1903, G Griggs 1353*, J Iwashita 2083, B Matzner 1896, R Merritt 1255*, B Millar 1468, H Mohrmann 2037, T Montemurro 1684, E Mueller 1819, R Mullins 1406, D Myers 1686, F Penoyer 1735, J Peterson Jr 1951, J Peterson Sr 1592, Ernest Rosenthal 1515, L Ross 1807, G Shoemaker 1457*, G Temme 2041, M Tomey 1698, C Whelan 1743, K Wiens 1483*, S Willett 1766. SAN JOSE STATE COL. CC (7): T Grichukin 1370*, V Hadika 1603, T Montemurro 1684, S Morford 1845, G Prowell 1232*, H Radke 1898, P Schure 1722. SAN LEANDRO CC (3): R Boehme 1544*, E Meyers 1746, M Sullivan 1711. SANGER CC (1): W Myers Jr 1713. SANTA ROSA CC (4): R Dusatko 1826, C Falbo 1645, L Henderson 1874, S Kornher 1982. UC DAVIS CC (6): D Comini 1578, G Comini 1754, H Everett 1537, D Olmsted 1761, M Shifrine 1792, S von Oettingen 2073. UNIV. OF SANTA CLARA CC (3): M Clark 1325*, S Fujishin 1487*, G Griggs 1353*. VALLEJO CC (6): T Alilin 1360*, F Harris 1714, L O'Doan 1704, G Rasmussen 1872, Bob Smith 1411, N Wood 1997. VISALIA CC (1): C Fotias 1651. WALNUT CREEK CC (7): S Bass 1815*, G Bigelow 1494, D Hall 1905*, D Jacobson 1637, S Kilker 1550*, S Mujahed 1593, C Vail 1602. WEST HILLS COMM. CC (1): W McClintock 1569.

CCCA AFFILIATE DIRECTORY

(Current number of CCCA affiliates: 44; members: 576.)

For information on affiliation to the CCCA, for which there is no charge, and the benefits of affiliation, contact the CCCA (address and telephone number on page 2). THE FOLLOWING ARE NOT MAILING ADDRESSES.

*

ALAMEDA CC: Inactive at present.
 ALAMEDA NAS CC: Alameda Naval Air Sta.
 ANTIOCH CC: Inactive at present.
 BECHTEL CC: W 7:30 p.m.; 11th Fl. Conf. Rm., 50 Beale St., San Francisco.
 BERKELEY CC: F 7-11 p.m.; Palm Rm., Berkeley Cen. YMCA, 2001 Allston Wy.
 BERKELEY CC, UC DIV.: F 7-11 p.m.; Palm Rm., Berkeley Cen. YMCA, 2001 Allston Wy.
 BERKELEY LIVE OAK CHESS GROUP: M 7-10:30 p.m.; Live Oak Rec. Cen., 1301 Shattuck Ave.
 BERKELEY SEN. CEN. CHESS GROUP: TU 9 a.m.-12 m.; Sen. Cen. of Berkeley, 1849 University Ave.
 CAPITAL CITY CC: W 7:30-11 p.m.; Clunie Clubhouse, Alhambra & "F" Sts., Sacramento.
 CASA ALVARADO CHESS CEN.: TU-F 4:30-10 p.m., SA-SU 2-10 p.m.; 467 Alvarado St., Monterey.
 CATERPILLAR CC: Inactive at present.
 CHABOT COL. CC: TUTH 11 a.m.; Rm. 830, 25555 Hesperian Blvd., Hayward.
 COL. OF THE SEQUOIAS CC: TU 11:30 a.m.-1 p.m.; Student Union, Mooney Blvd., Visalia.
 CONCORD CC: F 7:30-11; Concord Sen. Citizens Cen., 2974 Salvio St.
 DVI CHESS INTEREST GROUP: MF 7-9:30 p.m.; Deuel Vocational Inst., So. Kasson Rd., Tracy.
 EVERYMAN ATHLETIC CLUB CC: TU night; Fresno.
 FREMONT CC: TH 7-11 p.m.; Cen. Pk. Comm. Cen., 40204 Paseo Padre Pkwy.
 HAYWARD CC: MF 8-12 p.m.; HARD Bldg., Palma Ceia Pk., Miami Ave. & Decatur Wy.
 LIVERMORE CC: 1st & 3rd F 7:30-11 p.m.; Basement, Carnagia Bldg., 4th & "J" Sts.
 MARIN CC: TH night; United Meth. Ch. of Tamalpais Valley, Ash & Marin Ave., Mill Valley.
 MARTINEZ CC: M 7:30 p.m.; Sen. Citizens Cen., 1111 Ferry St.
 MECHANICS' INST. CC: M-F 9 a.m.-11 p.m., SA 9 a.m.-12 p.m., SU & HOL. 9 a.m.-10 p.m.; Mechanics' Inst. Bldg., Rm. 415, 57 Post St., San Francisco.
 MONTEREY PEN. CC: TH 7-12 p.m.; Casa Alvarado Chess Cen., 467 Alvarado St., Monterey.
 OAKLAND CC: F 7-11 p.m.; Multipurpose Rm., Lincoln Elem. Sch., 225 Eleventh St.
 ORINDA CC: TH 7:30 p.m.; St. Stephen's Epis. Ch., St. Stephen's Dr. & Via Las Cruces.
 PIEDMONT HILLS H. S. CC: M-F 2:30-4 p.m.; Rm. 14, 1377 Piedmont Rd., San Jose.
 PLEASANT HILL CC: F 7:30 p.m.-2 a.m.; Field House, 233 Gregory Ln.
 REDWOOD CITY CC: M 7:30-11; Redwood City Rec. Activity Bldg., 1400 Roosevelt.
 RICHMOND CC: F 7 p.m.; Our Lady of Mercy Ch., 301 W. Richmond Ave., Pt. Richmond
 ST. MARY'S COL. CC: St. Mary's Col. of Calif., Moraga.
 SAN JOSE CC: W 7:30 p.m.; San Jose Cen. YMCA, 1717 The Alameda.
 SAN JOSE STATE COL. CC: F 12 m.-4:30 p.m.; Almaden Rm., Col. Union, SJSC, 211 So. Ninth St.
 SAN LEANDRO CC: M 7-11; Cafeteria, Washington Sch., 250 Dutton Ave.
 SAN QUENTIN CC: Calif. State Prison.
 SANGER CC: Caffe Midi, 5048 No. Maroa Ave., Fresno.
 SANTA ROSA CC: F 7-10 p.m.; Barrett Hall, Santa Rosa Jr. Col., 1501 Mendocino Ave.
 UC DAVIS CC: M 7-11 p.m.; Games Rm., Memorial Union.
 UNIV. OF SANTA CLARA CC: M 4-7:30 p.m.; Red Lounge, Benson Memorial Cen.
 VALLEJO CC: F 7:30 p.m.; Vallejo Comm. Cen. Bldg., 225 Amador St.
 VISALIA CC: F 7:30 p.m.; Rec. Pk. Bldg., 345 No. Jacob St.
 WALNUT CREEK CC: TU 7:30 p.m.; Sen. Citizens Hospitality House, 1385 Civic Dr.
 WEST HILLS COMM. CC: 1st & 3rd W 7-9:30 p.m.; Student Cen., West Hills Coll, 300 Cherry Ln., Coalinga.
 WESTERN ADDITION CC: TU 7:30 p.m.; Family Serv. Agcy., 1010 Gough St., Cath. Hill, San Francisco
 O. B. WHALEY ELEM. SCH. CC: Lib., 2655 Alvin St., San Jose.

CALPOINTS FOR CENTRAL CALIFORNIA: INTERIM TOTALS

All Calpoints accumulated through 15 January have been totaled in this system to determine Central California's two qualifiers to the California State Chess Championship. For upcoming tournaments awarding Calpoints, see page 3.

*

STEVE SAWYER	15.00	Charles A. Maddigan	5.00	Michael R. Ewell	3.00
EDWARD ROSENTHAL	9.00	Richard Gordon	3.00	Walter T. Heaton	3.00

***** (paid advertisement) *****
MASSIVE CHESS SET



Imported from Mexico. Kings about 6 inches high, other pieces in proportion. Solid tropical woods. Standard (Staunton) design. Felted bases. Weighted for balance. In black & blonde. Net border "tourist" sets, but made to our specifications by a reputable manufacturer to whom we pay a premium for finer wood & workmanship. Careful inspection before shipment. We have sold these hand-made, eye-catching, majestic sets since 1957. Includes wood carrying box that opens to make handsome inlaid wood chessboard that fits set. Shipping wt. 8 lb. \$21.95 Post-paid. Money refunded if not pleased.

MILLER IMPORTS DEPT. V 9961 GSCHWIND ST.
 EL PASO, TEXAS 79924

CROSSSTABLE OF THE 1971 STATE CHAMPIONSHIP

Player	Rating	Score	Prize
Kim S. Commons	2238	X 0 1 1 1 1 1	4 1/2 \$210.00
James E. Tarjan	2403	1 X 1/2 0 1 1 1/2	4 160.00
Dennis G. Fritzing	2202	0 1/2 X 1/2 1 1 1	3 1/2 110.00
Julius H. Loftsson	2246	0 1 1/2 X 1/2 0 1/2	2 1/2 72.50
Ross Stoutenborough	2304	1/2 0 1/2 1/2 X 1/2 1/2	2 1/2 72.50
Craig N. Barnes	2173	0 0 0 1 1/2 X 1/2	2 57.50
Alex Suhobeck	2142	0 1/2 0 1/2 1/2 X	2 57.50
Av. 2244			\$750.00

NEXT AFFILIATE ASSESSMENTS DUE: 1 February with a grace period of two weeks allowed for payment. Appropriate officers of each affiliate should send 20¢ per club member, along with a list of the names and addresses of the affiliate's members, to the CCCA Treasurer, Leonard F. Trotter, 5315 Macdonald Avenue, El Cerrito 94530, 283-1595. Fines up to \$2 will be levied for delinquent payment without a valid excuse.

NEXT CCCA GENERAL MEMBERSHIP MEETING: Friday, 9 April, 8:00 p.m., Berkeley Chess Club, Berkeley Central YMCA, 2001 Allston Way, Berkeley. Every member of the CCCA, i.e., every person who is certified by the appropriate officer of a chess club or organization affiliated to the CCCA (listed on page 15) to be a member or officer of the affiliate, has full privileges of debate and voting. Nonmembers are welcome.

POSTMASTER: SEND PS FORM 3579 TO
 Martin E. Morrison
 Central California Chess Association
 Post Office Box 1622
 Oakland, California 94604

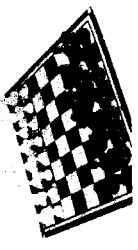
Ronald Atkinson
 Box 5866
 Carmel, CA 93921

CENTRAL CALIFORNIA CHESS ASSOCIATION SALES

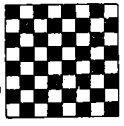
At the Lowest Prices in the United States
 Order from the CCCA (address and telephone number on page 2). All items available by immediate pickup or by mail.
CLOCKS: BHB Extra, light brown plastic case, 6" x 3" x 1 1/2", 60-day guarantee, the most used tournament clock. \$15.00 (\$16.00 if mailed).



SETS: Classic Staunton, tournament size 3 3/4" king, solid black and white plastic, felted bottoms, practically indestructible, in cotton bag. \$5.50 (\$6.50 if mailed).



ROLL-UP BOARD: Durable, extra heavy quality, good-looking vinyl on cloth backing, can be rolled up when not in use, brown and cream, 2 1/4" squares, 17" x 21 1/4". \$4.00 (\$4.25 if mailed).



World's largest chess magazine, monthly, at least 2500 of the best games per annum with notes by grandmasters, complete and fast coverage of big international tournaments. \$15.00 per annum.



UNITED STATES CHESS FEDERATION (USCF) MEMBERSHIPS (AT 20% DISCOUNT): \$4 (under 21), \$8 (21 and over) per annum, new or renewal. Benefits include a monthly Chess Life & Review subscription, eligibility for a USCF (national) chess rating, and discounts on chess books and equipment.

CALIFORNIA STATE CHESS FEDERATION (CSCF) MEMBERSHIPS: \$2.50 (under 21), \$5 (21 and over) per annum. Benefits include a bimonthly California Chess Reporter subscription, use of a CSCF Rating Card (to keep track of your approximate updated USCF rating), and eligibility for California State Chess Championship.

USCF AND CSCF MEMBERSHIPS ARE STRONGLY RECOMMENDED.