

# CHESS

By E. J. CLARKE

The American Chess Bulletin for March contains the full text of an open letter to Jose R. Capablanca, written by World's Champion Alekhine to make clear to all the world his attitude in regard to the conditions which shall govern the return match between these two masters in 1929. Alekhine sums up: "After the match was over I made it clear to you that I was willing to play you again only on strictly the same conditions as the first time. You told me that you quite agreed with this. Now you have evidently changed your mind. [Capablanca has written to Dr. A. Reub, president of the Federation Internationale Des Echecs, suggesting a modification of the rules drafted by Capablanca at London, 1922.] You do not seem to know me very well if you can imagine that anything could induce me to give up what I consider fair and sportsmanlike. If you wish to play a return match with me you will have to submit to the rules that you fixed yourself, and according to which the first match was played. I won six games from you in fair play, and I shall only recognize the superiority of one (be it you or another) who will also win six games from me." Alekhine closes with this Parthian shot: "I am convinced that someone who during his championship makes rules (not easy ones for his challenger) and who immediately after losing the title ventures to change these for others \* \* will not meet with sympathy in the sporting world."

Somehow we do not believe that there will be a "return match." The chess world, we think, would prefer a match between Alekhine and Dr. Emanuel Lasker.

\* \* \* \*

State Champion E. W. Gruer of Oakland, with his team of fifteen transbay experts, managed to defeat the Mechanics' Institute Chess Club in the intercity chess match, played at the institute, April 6, by the close margin of one game: Transbay 8, San Francisco 7. Score:

TRANSBAY	MECHANICS' INST.
Gruer (Capt.).... 1/2	Fink ..... 1/2
Smyth ..... 0	Stamer ..... 1
Fawcett ..... 0	Clarke ..... 1
Vedensky ..... 1	Gross (Capt.) .... 0
Hultgren ..... 1	Epsteen ..... 0
Gardner ..... 1	Drouillard ..... 0
Barlow ..... 1	Ralston ..... 0
Lowenthal ..... 0	Bergman ..... 1
Branch ..... 0	Woskoff ..... 1
Christensen ..... 1	Bagby ..... 0
Allen ..... 1	Burbank ..... 0
Monticello ..... 0	Silvius ..... 1
Thompson ..... 1/2	Powell ..... 1/2
Plumly ..... 1	Chilton ..... 0
Burnett ..... 0	Robison ..... 1
Total ..... 8	Total ..... 7

The following game was played at Board 1 in the Transbay vs. Mechanics' Institute match:

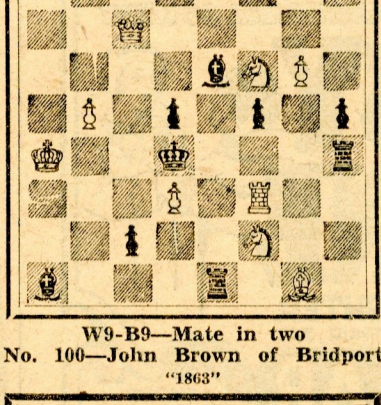
## GAME No. 96 SICILIAN

A. J. Fink White	E. W. Gruer Black	A. J. Fink White	E. W. Gruer Black
1 P-K4	P-QB4	18 BxQP	PxP
2 S-KB3	P-K3	19 Q-R4	R-S
3 S-B3	P-QR3	20 S-Q5	RxB
4 B-K2	P-Q3	21 RxS	B-Q
5 Castles	S-QB3	22 RxR	BxQ
6 P-Q4	PxP	23 S-B7	Q-K4
7 SxP	S-B3	24 RxB	R-QB?
8 B-K3	B-K2	25 RxP	P-R3
9 P-KB4	Castles	26 R(Q)Q7	B-B3
10 Q-K	B-Q2	27 S-Q5	B-S4
11 Q-S3	R-QB	28 P-KR4	BxP
12 P-B5	K-R	29 S-B4	K-R2
13 QR-Q	Q-K	30 S-R5	R-KS
14 Q-R3	B-Q	31 P-KS3!	B-S4
15 SxS	RxS	32 SxP	RxS
16 B-KB4	B-S3ch	33 RxRch	QxR
17 K-R	PxP	34 RxQch	KxR
		35 Drawn	

## PROBLEMS

A. J. F.

No. 99—A. G. Stubbs—"1918"



W9-B9—Mate in two

No. 100—John Brown of Bridport

"1863"



W4-B3—Mate in three

Solutions—No. 96, R-Bsq; No. 98, Q-B7.

G. Pring, Alameda; P. Bowater, Pasadena; J. F. Lange, Colfax; W. L. Pedrick, Ferndale; S. L. Bailey, Roseville; B. Huskinson, Roseville.