

CHESS

By E. J. CLARKE

Address all communications to Chess Editor, San Francisco Chronicle

Tevie Donates Cup for Championship Tournament

W. S. Tevie Jr., of the state championship tournament committee, has offered a silver cup for annual competition, to become property of the player winning it thrice. This cup will be given in addition to first prize of \$100 and a gold medal.

Is the P-KB4 Defense to Ruy Lopez Playable?

We have received the following interesting letter on the above move for Black in the Ruy Lopez:

Chess Editor The Chronicle—Sir: In The Chronicle it was said recently that Ruy Lopez defense beginning: 3½ P-KB4 had been "relegated to the limbo of discredited defenses."

With no idea of disputing this verdict, but merely as a matter of interest, I submit the following continuations, which I have never seen published or played. I remember reading that White's third move itself was discredited in the opinion of two or three generations of masters, so these suggestions are intended for no more than they may prove to be worth.

I take it that Black's purposes are to avoid playing P-Q3 prior to the development of his KB, to avoid weakening his Q side pawns by chasing the White KB, and to ignore the latter, leaving him to take the knight or retire voluntarily, either course proving his first move a wasted one.

- 1—P-K4, P-K4.
- 2—Kt-KB3, Kt-QB3.
- 3—B-Kt5, P-KB4.
- 4—Q-K2, P-KB5.
- 5—P-Q4, PxP.
- 6—QBxP, KB-B4.
- 7 and 8—Any plausible moves, then Kkt-K2 and P-Q3.

This is the strongest play I can find for White. Black's pieces are all unlocked, and if he is threatened, I cannot see it. Going back: To 5—P-Q3 or Kt-QB3, Black replies: 5½ Kt-KB3, and I do not see how White can interfere with B-B4, P-Q3 and Castles, in some sequence. Again: 4—P-Q4, P-QB3, Castles or B-B4. Without going any further 4½ KBPxKP seems to be disastrous for White.

In case of an advance of White's kingside pawns, Black, with P-K-Kt4, P-R3 or P-R4 is on the ground first.

Yours very truly,
EDGAR NORRIS.

(To be continued.)

November 28, 1921.
There is no doubt but that the early advance of the KBP by Black injects plenty of life and "adventure" in the opening—more than in twenty games along normal lines in the Lopez—but the question remains, can Black "get away" with it? Certainly if White is kind enough to accept the proffered pawn, Black has an easier time than is the case where White simply develops his pieces. In Lasker's Magazine, Vol. I, pp. 31, 32 and 85 will be found extensive analysis of this defense. Also Marshall's game with Janowski (p. 208) and one Maroczy vs. Marshall (p. 156, Vol. 2) wherein Marshall essayed the P-KB4 defense—winning from Janowski, but losing to Maroczy. These games were opened as follows:

(PLAYED AT PARIS, FEBRUARY, 1905)

Janowski white	Marshall black	Janowski white	Marshall black
1—P-K4	P-K4	5—PxP	P-K5
2—Kt-KB3	Kt-QB3	6—Kt-KR4	P-Q4
3—B-Kt5	P-KB4	7—P-Q3	P-Q5
4—Kt-B3	Kt-B3	8—Kt-Kt.etc.	

(PLAYED AT OSTEND, JUNE, 1905)

Maroczy white	Marshall black	Maroczy white	Marshall black
1—P-K4	P-K4	6—B-QB4	P-Q3
2—Kt-KB3	Kt-QB3	7—P-B3	PxP
3—B-Kt5	P-KB4	8—PxP	B-KKt5
4—P-Q3	Kt-B3	9—QKt-Q2	Q-Q2.etc.
5—Castles	B-B4		

White has made no effort to profit by the weak development chosen by black. Hence black has now obtained a position vastly superior to that of white—Lasker.

How then, shall white proceed against P-KB4? According to Lasker "he should beyond question or doubt move 4 Kt-B3."

GAME No. 42

A very lively game from the recent masters' tournament at The Hague.

KING'S GAMBIT DECLINED

Rubinstein white	Marco black	Rubinstein white	Marco black
1—P-K4	P-K4	19—FxKt	Kt-Kt3
2—P-KB4	B-B4	20—P-Q6	QxP
3—Kt-KB3	P-Q3	21—P-Kt6	PxP
4—B-B4	Kt-KB3	22—BxRch	KxB
5—Kt-B3	Castles	23—PxPch	KxP
6—P-Q3	QKt-Q2	24—B-K3	BxB
7—P-B5	P-B3	25—KtXB	Q-Q7ch
8—P-QR3	P-QKt4	26—K-B	P-Kt5ch
9—B-R2	P-QR4	27—K-Kt	B-K7
10—Q-K2	Q-Kt3	28—Q-B5ch	K-R3
11—Kt-Kt5	P-R5	29—Q-R3ch	K-Kt3
12—Kt-Q	P-Q4	30—Q-B5ch	K-R3
13—P-B3	B-R3	31—QxP	R-Q2
14—Q-B3	PxP	32—P-R4	QxKtP
15—PxP	QR-Q	33—R-K	B-Q6
16—P-KKt4	Q-B2	34—Kt-Kt4el	K-Kt3
17—KtXB	RxKt	35—Q-Kt5ch	Resigns
18—P-Kt5	Kt-Q4		

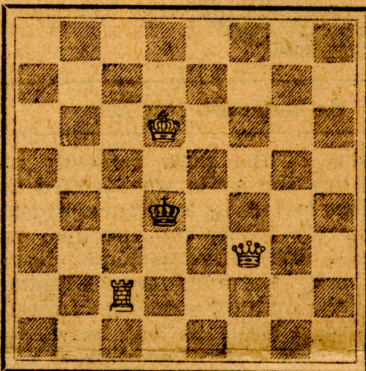
Problems

A. J. F.

PROBLEM NO. 48

By G. CARPENTER

Black (1 piece)



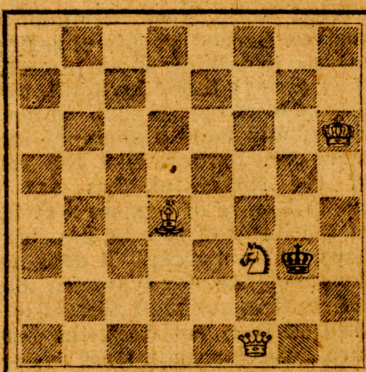
White (3 pieces)

Mate in two moves.

PROBLEM NO. 49.

By P. PEEDLEMUN

Black (1 piece)



White (4 pieces)

Mate in two moves.

Solution No. 46—B-Q7, and No. 47, B-B6 (as diagramed, no solution, pawn at Q3 should be a black bishop).

Solvers' list—E. L. Church, Ahwahnee; S. Jackson, Dyerville; H. H. Howell, Natoma; J. E. Ford, city; B. Wright, city; E. S. Van Camp, city; C. W. Updyke, Dinuba; F. H. Melhorn, city; S. E. Silvius, city; "A. J. H.," Palo Alto; J. Fulton, Sacramento; R. T. Desmond, Colfax; "P. B. W.," Potter Valley.