

C H E S S

By E. J. CLARKE

Address all communications to Chess Editor, San Francisco Chronicle

SUNDAY, APRIL 23

Bernardo Smith, acting secretary of the Mechanics' Institute Chess club, has received the following "official" challenge from the Los Angeles Chess club:

"Los Angeles, April 16, 1922.

"Mechanics' Institute Chess club, San Francisco, Cal.—Gentlemen: We hereby challenge you to a match by telegraph on twelve boards to be held May 30 (Decoration day). Respectfully, Los Angeles Chess club.

by S. MLOTKOWSKI."

In his reply, accepting the challenge on behalf of the institute, Smith suggested that arrangements be made with the telegraph company for use of the wire till the games are completed, thus avoiding necessity of adjudication of unfinished games. While this will entail additional expense, it is believed that the membership will cheerfully come through with the required amount.

The annual chess match between teams representing University of California and Stanford university was held Friday evening at the Mechanics' Institute Chess club. The match was on seven boards and Professor A. W. Ryder acted as referee. For results see another page of this issue.

State Champion E. W. Gruer and Professor A. W. Ryder of the University of California are playing a match of ten games up, draws not to count. The match is being played one game a week (Tuesday evening) at the Faculty club on the University of California campus, and is being followed with considerable interest by transbay chess players. Ryder won the first game, playing his favorite "exchange" variation of the Ruy Lopez. Gruer won the second game.

An unknown friend of The Chronicle chess column mailed from Washington, D. C. a newspaper clipping giving details of a recent visit to that city of Sammy Rzeschewski, the Polish boy wonder. Sammy defeated a group of players simultaneously, including several Senators and Congressmen. Later He met President Harding who shook hands with Sammy and said he was always glad to meet champions. Sammy was much pleased with his reception.

this convenient place, so that problem positions would always at least look a little like chess.—F. M.

R. M. F.—In re game No. 76 (Morrison vs. Sharp), if 31½ B-R6ch, White simply sidesteps to R2, and Black apparently has nothing better than 32½ Q-K4, and the game proceeds as actually played. If 32½ Q--Q2 (?), 33 P-K5 dis. ch and wins apiece. Diagram very neat.

GAME NO. 77

The first game in the Gruer-Ryder match. Notes by E. W. Gruer:

RUY LOPEZ

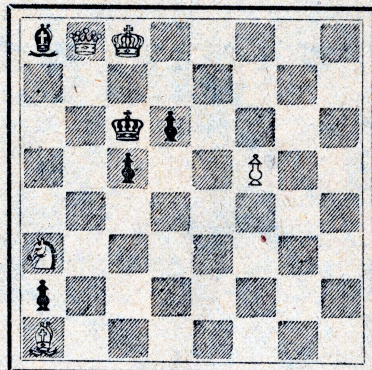
White—A. W. Ryder.	Black—E. W. Gruer.
1—P-K4	P-K4
2—S-KB3	S-QB3
3—B-S5	P-QR3
4—BxS	QPxB
5—P-Q4	B-KS5(a)
6—PxP	QxQch
7—KxQ	P-KB3
8—B-B4	0-0-0ch
9—S-Q2	S-K2(b)
10—P-KR3	BxSch
11—PxB	S-S3
12—B-K3	PxP(c)
13—R-Ks	B-K2
14—K-K2	KR-B
15—QR-Q	R-B2
16—S-B4	R(Q)-KB
17—RxS(d)	PxR
18—SxP	R-B3
19—B-S5	R-S
20—BxR	PxB
21—S-Q3	R-R
22—R-KR	P-QB4
23—S-B4	R-R3
24—S-Q5	B-Q
25—P-KB4	P-B3
	26—S-K3
	27—P-B3
	28—P-B5
	29—S-S2
	30—P-KR4
	31—P-R5
	32—P-B3
	33—S-K3
	34—S-S4
	35—P-R6
	36—R-Q
	37—R-KR
	38—P-QS4
	39—P-R4
	40—PxP
	41—RxR
	42—R-R8(f)
	43—R-KS8
	44—R-S7
	45—K-Q3
	46—P-R7
	47—SxP
	48—S-K8ch(i)
	49—P-R8-Qn Resigns

Problems

A. J. F.

PROBLEM NO 86

By A. Jakob



Mate in two.

THE COMPOSITE GAME

For the benefit of those who failed to see last week's chess column it may be stated that a novel game of chess is being tried out. Readers of this column are invited to vote on what they consider the best move in the subjoined position (a counter gambit in the queen's pawn opening. 1 P-Q4, P-Q4; 2 P-QB4, P-K4; 3 PXP, P-Q5. Those sending in white's "best" move 4 were:

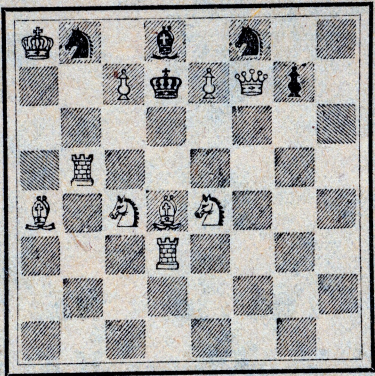
- F. L. De Long.....P-QR3
- G. W. Sweetser.....S-KB3
- E. L. Hinckley.....S-KB3
- Bernardo Smith.....S-Q2
- R. M. Folger.....S-KB3
- S. Maynard.....P-QR3
- F. Maus.....S-KB3
- S. E. Silvius.....S-KB3
- "Incoq".....P-QR3

Those favoring 4 S-KB3 are in a majority. Now for black's reply.

In an offhand game recently at the Mechanic's institute between F. W. Huber and E. W. Gruer (an Evans), black (Gruer) slipped a cog in the defense and Huber wound up the game brilliantly by announcing a mate in seven moves. Position: r3k2r; ppp2ppp; 1b2s3; 8; 4P3; BB3P2; P5PP; 2RR1K2. Mate: 1B-R4ch, P-B3; 2RXP; B-B4; 3RxB dis ch, P-S4; 4BxPch, K-K2; 5R-B5 dis ch, S-B4; 6BxSch, K-K3; 7B-Q7, mate.

Frank Maus, the versatile problem and end-game composer, is constantly striving for new effects and ideas on the chessboard. His latest tour de force consists of a position wherein an approach to the maximum number of checks is obtained. Maus figures that fifty-five checks are possible. When he diagrammed a fifty-one check position it seemed impossible to add another check. But in the appended diagram he has achieved fifty-two checks. Can any of The Chronicle chess fans beat it? Of course, in counting fifty-two checks, each different move of the rook at b5 discovering check is reckoned separately. Likewise, the bishop at d4.

White has 52 checking moves on the move.



NOTE—Only one set of chessmen can be used in problematic chess compositions—except in the so-called "Christmas problems." Positions with 3 or 4 queens, etc., are puzzles—not chess. Hence the rule that no promotions are allowed until the first move in a diagram. Why the composers made this rule a part of their unwritten constitution is not known. Perhaps they all tacitly agreed to draw the line at

Solutions No. 84, R-KR3, leave key stand, again mate in two, P-K3, and again Q-B6.

No. 85, Q-R4—Black men on Q2, Kt4 and KB7 should be white.

Solvers—A. J. H., Palo Alto; S. L. Jackson, Dyerville, F. Santallier, Oakland.

Problem No. 80, O. K., BxKt ch and black mates, which the condition calls for.

"The Chess Corner" in the Baltimore Sunday Sun has been revived under the able management of S. M. Shipley.

Starting next Sunday, instead of having two problems, one diagram will be used to illustrate some game-ending, which occurred in actual play.

NOTES

- (a) A gambit variation; very questionable.
- (b) PXP, followed by S-KB3 is better.
- (c) With view to obtaining an attack on the open bishop's file.
- (d) A pretty and effective combination which completely spoils all of Black's plans.
- (e) Advanced pawns are always subject to attack.
- (f) Neatly forcing the game. Protecting the bishop's pawn with the king first was probably safer.
- (g) K-K2 was much better.
- (h) Coup de smash!

Lachman Employes Guests at Dance

Lachman Brothers Wednesday night celebrated the twenty-seventh anniversary of the establishment of their firm by a dance and entertainment, attended by 300 employes and their families. The affair was held on the fourth floor of the Lachman Brothers building. Gus Lachman, president for the past four years of the Mission Street Merchants' association, and Ed Lachman were hosts.

Entertainment was supplied between dances by Miss Clorine Engle, one of the singers of the forthcoming Sciots paginat; Ed Lachman in vocal numbers and by a variety of entertainers.

Charles Duncan, sales manager of Foster & Kleiser, delivered an address on "Co-operation and Service," which he characterized as the ties which bind employer and employe most effectively.

Sons and Daughters in Bay Counties Outing

A reunion of the officers and members of every parlor of the Native Sons and Native Daughters of the Golden West in the bay counties will be held Sunday, May 14, at an outing and athletic carnival in Shell Mound park, Emeryville. The proceeds will apply against the fund being raised for the construction of a new Native Sons' athletic club building, with gymnasium features and other accommodations of a modern clubhouse.