

# CHESS

By E. J. CLARKE

(Address All Communications to Chess Editor, The Chronicle)

## International Masters' Tournament

Six of the world's greatest chess masters have been invited to compete in a tournament scheduled to start March 1 at Manhattan Square Hotel, New York city. They are World's Champion Capablanca, Cuba; Marshall, United States; Nimzowitsch, Russia; Alekhine, France; Vidmar, Jugo-Slavia, and Bogoljubow, Ukrania. Twenty rounds in all will be played, each master contesting four games with each other entry. Prizes are: First, \$2000; second, \$1500; third, \$1000. It is understood that the winner will secure a match for the world's title. Should Capablanca win the tourney, then the second prize winner will become eligible for a tilt at Capablanca's crown.

Friends and admirers of Dr. Emanuel Lasker, world's champion for thirty years and winner of countless international tournaments, will sincerely regret that he was excluded for reasons which the committee promises to make public later. According to Herman Helms, editor of the American Chess Bulletin, "there occurred a rupture of friendly relations between Dr. Lasker and certain New York patrons of the game in 1924. It seems that this has made an invitation to him to play here in March undesirable in their view." Too bad! It should seem that nothing short of murder should keep Lasker out. But the august committee, all honorable men, will no doubt give reasons to satisfy the chess world. But it will seem like "Hamlet" minus the Dane, n'est-ce pas?

\* \* \* \*

The following humoresque occurred in a game between "Heinie" Gross (white) and E. Beech (black) in the pending tournament at the Institute: Petroff Defense—1, P-K4, P-K4; 2, S-KB3, S-KB3; 3, B-B4, SxP; 4, S-B3, SxS; 5, QPxS, P-QB3 (Black's only move here, of course, is P-KB3!) 6, S-S5, Q-K2; 7, BxP ch, K-Q; 8, S-K6 ch—and Exit Her Majesty!!

Note—Game No. 3, read 17P-QR4.

\* \* \* \*

The appended game was played in the 1913 Decoration day telegraphic match, Mechanics' Institute vs. Los Angeles Chess Club at Board 8. Description and score are from one of our former columns:

Board 8, G. Hallweger (B.) vs. Petersen (W.)—If the S. C. player had known how dearly Hallweger loves a sudden attack and glories in being on the defensive in the early stages of a game, Petersen would never have adopted the Scotch, with the violent attack attachment (Kt-Kt5, Q-R5, etc.). The veteran wore a look on his face which plainly said: "My turn to attack will come—and there won't be any retreat from Moscow." Sure enough, Petersen's attack petered out (I beg your pardon, "Pete"), and he was endeavoring to burn bridges behind him to cover his precipitate flight when the veteran made such a breach in his position that Petersen's king was surrounded by the colored troops and taken prisoner. 32 moves.

### GAME NO. 4

#### SCOTCH GAMBIT

Petersen, L. A. (white) vs. Hallweger, M. I. (black).

WHITE	BLACK	WHITE	BLACK
1 P-K4	P-K4	18 Kt-R2	Q-B3
2 Kt-KB3	Kt-QB3	19 Kkt-B3	Kt-K5
3 P-Q4	PxP	20 B-KB4	P-B3
4 B-QB4	B-B4	21 QBxKt	PxB
5 Kt-Kt5	Kt-B3	22 QR-Q	Q-Q3
6 Q-R5	Q-K2	23 K-Kt2	K-R
7 Castles	Kt-K4	24 KtxP	BxKt
8 B-Kt3	P-Q3	25 RxR	B-B3
9 P-KR3	Castles	26 KR-Q	Kt-Kt4
10 P-KB4	Kt-Q2	27 KR-Q2	QR-K6
11 P-B5	Kt-B3	28 QR-Q3	KR-K
12 Q-R4	B-Q2	29 BxP	RxR
13 Kt-Q2	QR-K	30 RxR	BxBch
14 K-R	P-QB3	31 R-Kt	R-K7
15 P-Kt4	P-Q4	32 R-Kkt3	Q-B4ch
16 PxP	PxP	33 Resigns	
17 QKt-B3	Q-Q3		

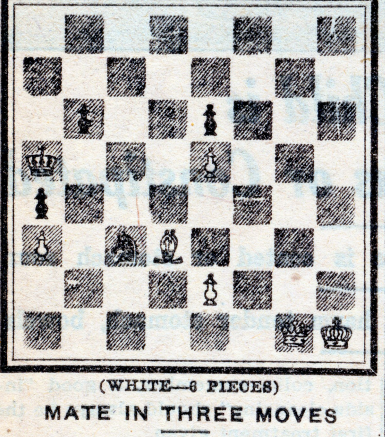
## PROBLEMS

By A. J. FINK

### PROBLEM NO. 3

By J. Moller

(BLACK—5 PIECES)



(WHITE—6 PIECES)

### MATE IN THREE MOVES

Solution to No. 2—Q-QR2. The bishop on queen knight three should be white, instead of black. To the experienced solver this error would have been noticed, as the general rule is promoted pieces are not allowed on the diagram, but they are, however, allowed in the course of proving the position to be a possible one—that is, being able to arrive at the position from actual play. To safeguard against a recurrence the number of men employed by each side will be shown, as in today's problem.