

# CHESS

By E. J. CLARKE

The Australasian gives the following short game as having been played in the French championship, 1924, between Gibard (W.) vs. Lazard (B.):

1 P-Q4, S-KB3; 2 S-Q2, P-K4; 3 PxP, S-S5; 4 P-KR3 (not attempting to hold the gambit pawn, calculating the knight would be in an awkward position if SxKP) but behold the blacks move S-K6!!! and white resigns.

\* \* \* \*

A game won by black in six moves and without moving a piece seems almost impossible, but here it is: M. N. (W.) vs. Tarrasch (B.).

1 P-Q4, P-Q4; 2 P-QB4, P-K3; 3 S-QB3, P-QB4; 4 B-B4, PxQP; 5 BxS, Pxs; 6 B-K5, PxSP and white resigns.

\* \* \* \*

The eighth California State championship tournament, we hear from a reliable source, will be held at Los Angeles some time in October. Previous tourneys have been held somewhat earlier. Entries, exact date and conditions of play to be announced later, when more definite arrangements are received.

\* \* \* \*

The following game was played\* in the North America championship of the Correspondence League of America between George E. Croy of Los Angeles and Henry F. Marshall of Mill Valley. White features a swift change from a seemingly cramped defensive position to one of irresistible attack:

|          |       |           |         |
|----------|-------|-----------|---------|
| Marshall | Croy  | Marshall  | Croy    |
| White    | Black | White     | Black   |
| 1 P-K4   | P-K4  | 13 O-O    | B-R6    |
| 2 S-QB3  | S-KB3 | 14 QR-S   | P-QR3   |
| 3 P-KB4  | P-Q4  | 15 Q-K    | S-R2    |
| 4 BPxP   | SxP   | 16 S-S5   | B-K2    |
| 5 S-KB3  | B-K2  | 17 B-KR5  | S-S4    |
| 6 Q-K2   | P-KB4 | 18 P-K6   | P-KS3   |
| (a)      | (b)   | 19 BxSP   | BxS     |
| 7 P-Q3   | SxS   | 20 B-B7ch | RxB     |
| 8 Pxs    | O-O   | 21 Pxrch  | KxP     |
| 9 B-KB4  | P-B4  | 22 BxB    | QxBP(c) |
| 10 P-Q4  | S-B3  | 23 Q-K7ch | Resigns |
| 11 Q-Q2  | P-B5  |           |         |
| 12 B-K2  | Q-R4  |           |         |

\*Game started March 17, 1929, and lasted three months.

(a)—Spielman's variation.

(b)—Vidmar's continuation.

(c)—Better would be Q-B2, which, however, would be met by Q-R4, etc.

Notes by the winner.

\* \* \* \*

## LOCAL CHESS

The following drawn game had much to do in deciding the 1929 Mechanics' Institute club championship. It is a very good example showing the style of play of the present title holder, L. Rosenblatt:

|             |               |             |               |
|-------------|---------------|-------------|---------------|
| C. Bergmann | L. Rosenblatt | C. Bergmann | L. Rosenblatt |
| White       | Black         | White       | Black         |
| 1 P-K4      | P-K3          | 18 B-K2     | S-S2          |

|          |       |          |      |
|----------|-------|----------|------|
| 2 P-Q4   | P-Q4  | 19 PxpP  | BxpP |
| 3 S-QB3  | PxP   | 20 BxB   | RxP  |
| 4 SxP    | S-Q2  | 21 Q-QB3 | K-S  |
| 5 S-KB3  | KS-B3 | 22 B-S4  | Q-B3 |
| 6 B-Q3   | B-K2  | 23 R-Q4  | P-K4 |
| 7 O-O    | P-QS3 | 24 PxP   | RxP  |
| 8 P-B4   | B-S2  | 25 R-B6  | S-K3 |
| 9 SxS    | SxS   | 26 BxS   | RxB  |
| 10 B-K3  | BxS   | 27 R-Q5  | KR-K |
| 11 QxB   | R-B   | 28 R-K5* | Q-Q2 |
| 12 QR-Q  | O-O   | 29 KRxR  | RxR  |
| 13 P-QR3 | Q-K   | 30 Q-K3  | Q-Q8 |
| 14 Q-R3  | K-R   | 31 K-B2  | RxR  |
| 15 P-KS4 | P-S3  | 32 QxR   | Q-B7 |
| 16 P-B4  | P-B4  | 33 K-S3  | QxBP |
| 17 P-S5  | S-R5  |          |      |

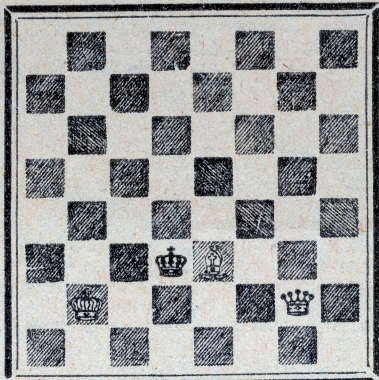
\*Very finely played, making the doubling of black's rooks useless.

\* \* \* \*

## PROBLEMS

A. J. F.

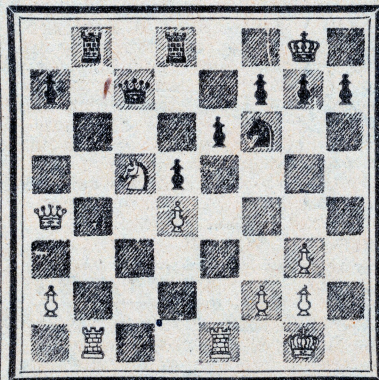
No. 228—B. M. Neill, Philadelphia



W(3) B(1)—Mate in Three

NO. 229—LOCAL ENDING

The following beautiful finish occurred in an off-hand game at the local club between Dr. Scroggs (White) and F. W. Huber (Black). Won by Huber:



|        |        |        |           |
|--------|--------|--------|-----------|
| 1 S-R6 | RxB    | 6 P-S4 | RxPch     |
| 2 SxQ  | RxBch  | 7 K-R5 | P-S3ch    |
| 3 K-R2 | S-S5ch | 8 K-R6 | P-B3      |
| 4 K-R3 | SxPch  | 9 P-S3 | R-R5ch    |
| 5 K-R4 | R-K5ch | 10 PxB | S-S5 mate |

Solution to No. 227—Q-R5.

Solvers' list—R. W. King, Willits; R. Dunipace, Palo Alto; J. E. E., Los Gatos; J. M. Einfalt, Merced; L. Oser, Chico.