

Chess

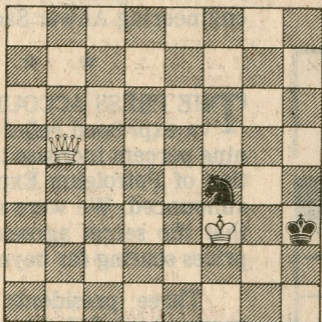
By George Koltanowski

TWO IN ONE

PROBLEM

11.7.A

By Peter Olick, Germany



A. White to play and mate in THREE moves. B. You have another three-mover if you place the White Queen on Q5.

READERS SEND IN:

Played in Berkeley, March, 1979.

White: Lawrence Sheckman. Black: Geoffrey Brace.

1.P-K4	P-Q4	11.N-R4	Q-R4ch
2.PxP	N-KB3	12.N3-Q2	B-QN5
3.P-QB4	P-B3	13.P-QN3	P-K5
4.PxP	NxP	14.BxN	PxP!
5.N-KB3	P-K4	15.Q-B1	PxB
6.N-B3	B-QB4	16.P-QR3	KR-K1ch
7.P-KR3	B-B4	17.K-Q1	Q-K4
8.P-Q3	0-0	18.N-KB3	Q-K8ch
9.B-N5	P-KR3	19.NxQ	RxN mate
10.B-R4	Q-N3		

LONE PINE, CALIFORNIA, APRIL, 1979

White: Vitaly Zaltsman, USA. Black: Gennadi Sosonko, Holland.

1.P-QB4	P-QB4	9.B-N2	0-0
2.N-KB3	N-QB3	10.B-Q3	PxP
3.N-B3	N-B3	11.BxP	Q-K2
4.P-K3	P-K3	12.0-0	P-QN4
5.P-Q4	P-Q4	13.B-Q3	B-N2
6.P-QR3	P-QR3	14.N-K4	NxN
7.QPxP	BxP	15.BxN	QR-B1
8.P-QN4	B-R2	16.Drawn	

SOLUTION to A: 1.Q-N1, B: 1.Q-Q1.

TONIGHT, starting at 7 o'clock, Grandmaster Larry Christiansen will play ten boards simultaneously blindfold at the Town School for Boys, 2760 Jackson Street, San Francisco. Spectator tickets are \$2 donation to the Youth Chess Fund. This is Larry's first blindfold show in San Francisco! I will be one of the tellers.