

CHESS

By E. J. CLARKE

Chess enthusiasts were keenly interested in the purported challenge of Dr. Alekhine by 7-year-old Beta Belasy, juvenile chess champion of Hungary, whose likeness appeared on the first page of a local newspaper. "She is hailed as a real expert of the game by European masters," continues the story, "and they consider her challenge as a perfectly logical act. Most of them believe that she would prove a match for the champion." When asked about the chess skill of the Hungarian maid, Dr. Alekhine smiled good humoredly and remarked that while Beta was hardly as strong as all that, in his opinion she could hold her own with the average club player.

* * * *

An interesting seven-board team match was played a week ago Saturday night between the University of California Chess Club and the Athens Club at the latter's organization in Oakland. Although opposed by a strong team, the U. of C. boys held the Athenians to a draw. Following is a table showing individual results:

Bd.	U. OF C.	ATHENS
1	Christensen ... 0	Gruer 1
2	Carmany 0	Drouillard ... 1
3	Lowenthal ... 0	Smyth 1
4	Belmont 1	Barlow 0
5	Traum 1/2	Dr. Thomas ... 1/2
6	Lauderdale ... 1	Dr. Guerra 0
7	Malezoeff ... 1	Dearborn 0
	3 1/2	3 1/2

* * * *

The Athens Club chess team has challenged the Mechanics' Institute Chess Club to a five-board match. The defi has been accepted and the Institute experts will battle with the Grecians in their Oakland clubrooms. Exact date will be announced later.

* * * *

GAME NO. 178

We are indebted to The Gambit of St. Louis for the following remarkable game between E. D. Bogoljubow and A. Alekhine, played without board of chess pieces, during their internment at Mannheim, Germany, in 1914, where they were competing in a tournament when the World war started. The notes evidently are by Alekhine, who, by the way, was only 22 years old:

SICILIAN			
Bogoljubow	Alekhine	Bogoljubow	Alekhine
White	Black	White	Black
1 P-K4	P-QB4	23 KxB	B-R3
2 P-KS3	P-KS3	24P-B4	S-B3
3 B-S2	B-S2	25 R-Q(a)	KR-Q(b)
4 S-K2	S-QB3	26 S-K2	Q-S3
5 P-QB3	P-K3	27 K-B2	B-B
6 S-R3	KS-K2	28 P-KR3	B-S5
7 P-Q4	PxP	29 Q-S2	R-B2
8 PxP	P-Q4	30 P-R3	B-K2
9 P-K5	Castles	31 P-QS4	KR-QB
10 S-B2	B-Q2	32 P-S4	PxP
11 Castles	R-B	33 PxP	K-S2
12 B-S5	P-KR3	34 P-B5	B-R5ch
13 B-Q2	Q-S3	35 K-B3	B-S4
14 B-B3	S-R4	36 S-KB4	SxKPch(c)
15 BxS	QxB	37 PxS	R-B6
16 S-K3	B-R5	38 Q-Q2	KR-B5
17 P-S3	B-S4	39 S-S2	P-Q5
18 R-K	Q-R4	40 R-R	K-S
19 Q-Q2	P-KR4	41 R-R3	PxS
20 S-B3	Q-R4	42 Q-K2	Q-Q5
21 KR-QB	B-QR3	43 Resigns (d)	
22 B-B	BxB		

(a) If 25 S-B2, Black could have won a pawn by 25 SxKP, followed by QxS.

(b) Overlooking that he could still win a pawn by SxKP.
(c) The winning move.
(d) There is no defense.

* * * *
GAME NO. 179

During the champion's engagement at the Manhattan Chess Club, he played three games simultaneously against three strong teams in consultation. Alekhine won two, but was defeated by Messrs. Meyer and Samuels in the following encounter:

ZUKERTORT

Alekhine	M&S	Alekhine	M&S
White	Black	White	Black
1 S-KB3	P-Q4	15 S-B5	B-B
2 P-QS3	S-KB3	16 P-KR3	S-B4
3 B-S2	B-B4	17 P-KS4	S-K3
4 P-Q3	P-K3	18 S-K2	B-B4
5 P-S3	QS-Q2	19 RxB	RxB
6 B-S2	P-B3	20 R-Q	RxBch
7 Castles	Q-B2	21 QxR	P-KR4
8 P-B4	B-K2	22 Q-R(?)	S-Q2
9 S-B3	R-Q	23 S-R4(?)	Q-Q3
10 Q-B2	Castles	24 K-B	Q-Q6
11 P-K4	PxKP	25 K-K	B-S5ch
12 PxP	B-S3	26 B-B3	S-Q5!
13 QR-Q	P-K4	27 Resigns(a)	
14 S-KR4	KR-K		

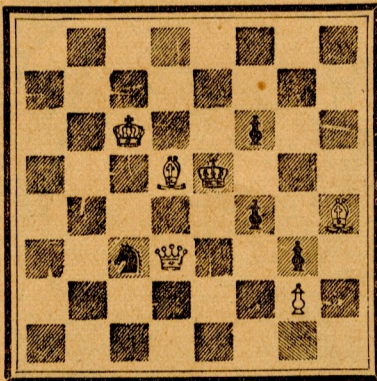
(a) Examination of the position will show there is no defense against the many threats. 27Q-S2, then BxBch; 28SxB, S mates.

* * * *

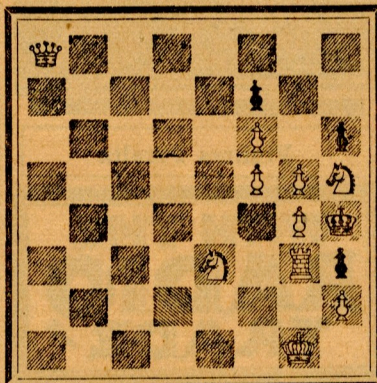
PROBLEMS

A. J. F.

No. 202—A. Bolus



W(5) B(5)—Mate in Two
No. 203—S. Loyd



W(10) B(4)—Mate in Three
Solutions: No. 200—B-K7, No. 201—P-Q7, K-K2; K-S1, R-R6; P-S3, R-K5; S-S7!