

CHESS

By E. J. CLARKE

Address all communications to Chess Editor, San Francisco Chronicle

SAN FRANCISCO BEATS PORTLAND

Columbus day was celebrated by San Francisco and Portland chess players with a telegraphic match on twelve boards, which was won by the Mechanics' Institute, 9½ to 2½.

A. G. Johnson captained the Portland team, while Bernardo Smith acted in like capacity for San Francisco. Much credit is due the latter for the clock-like regularity which characterized the conduct of the match, and also for rounding up one of the strongest teams to represent the city by the Golden Gate in the history of local telegraphic chess contests. Wednesday's match was in the nature of a championship affair, as the northern club, by virtue of its defeat of the Institute in 1919, claimed premier honors of the Pacific coast. Furthermore, Sammy Rzeschewski, at the conclusion of his exhibitions in Portland, expressed his opinion that the players of that city were stronger than any he had met on the coast. Therefore, when Club Champion E. W. Gruer defeated Club Champion A. G. Johnson at Board No. 1 after 20 moves, he was accorded a prolonged ovation by the spectators, who crowded the chess room, watching the various boards.

This was followed by the splendid victory of Board No. 11 by S. Simon for the Institute. Then Dr. W. R. Lovegrove continued the good work at Board No. 2, defeating E. G. Short in 20 moves. Unfortunately, at Board No. 3, O. B. Goldman registered a win for Portland at this juncture, heating A. J. Fink after 34 moves. At Board No. 4 The Chronicle chess editor took the scalp of J. Van Zante in 43 moves. Bernardo Smith at Board No. 7 received his opponent's resignation after 38 moves. Then the veteran, George Hollweggen, scored a popular victory in 46 moves. C. Woskoff, J. F. Smythe and S. Maynard drew their games and the match was brought to a successful conclusion by W. H. Smith's defeat of E. S. Thomas in 40 moves and A. B. Stamer's fine victory over C. W. De Graff in 44 moves. A feature of the match was the good sportsmanship shown by Portland. Just before the telegrapher's "30" was ticked off, the following message was received from Portland: "You lived up to promise made two years ago. We trust in a return match that we will have better luck. (Signed) JOHNSON."

R. E. Gearhart acted as referee for San Francisco in Portland, while Fred Pelouze of Oregon looked after Portland's interests in this city. E. H. Ricker of San Francisco was an efficient supervisor of outing and incoming moves.

The following table shows pairings and results; San Francisco won toss of coin for color and played white on odd numbered boards:

SAN FRANCISCO		PORTLAND	
Gruer1	Johnson0
Lovegrove1	Short0
Fink0	Goldman1
Clarke1	Van Zante0
W. Smith1	Thomas0
Hollweggen1	Parker0
B. Smith1	Fleming0
Woskoff1	Adler½
Stamer1	De Graff0
Hallweggen½	L. C. Leonard½
Smythe½	Bossin0
Simon1	R. E. Leonard½
Maynard½		
Total9½	Total2½

GAME DEPARTMENT

Following is a selection of games from the San Francisco-Portland telegraph match:

GAME No. 28

QUEEN'S GAMBIT DECLINED

E. W. Gruer. White	A. G. Johnson. Black	E. W. Gruer. White	A. G. Johnson. Black
1—P-Q4	P-Q4	11—Q-K2	PxP
2—S-KB3	S-KB3	12—SxP	P-K4
3—P-QB4	P-K3	13—S-KB3	B-B
4—S-E5	B-K2	14—KR-Q	Q-S3
5—B-S5	QS-Q2	15—P-K4	S-QB4
6—P-K3	Castles	16—BxS	QxB
7—R-KB	P-QB3	17—S-Q5	Q-KS4
8—B-Q3	R-K	18—P-KR4	Q-Q(7)
9—Castles	PxP	19—S (Q5)-K7ch	BxS
10—BxP	P-QB4	20—RxQ	Resigns

GAME No. 29

FRENCH DEFENSE

E. G. Short. White	Dr. W. R. Lovegrove. Black	E. G. Short. White	Dr. W. R. Lovegrove. Black
1—P-K4	P-K3	12—S-Q3	Q-Q83
2—P-Q4	P-Q4	13—B-K3	S-K5
3—S-QB3	S-K	14—BxS	PxB
4—B-Q3	P-Q	15—S-Q4	B-KS5
5—PxB	P-Q	16—P-KB3	S-K4
6—PxB	PxP	17—P-S4	S-Q6ch
7—B-KS5	Castles	18—QxS	PxQ
8—Q-Q2	B-K3	19—PxB	QxP
9—Castles	QS-Q2	20—RxP	B-B4
10—S-B3	Q-QR4	21—Resigns	
11—P-QR3	KR-QB		

GAME No. 30

QUEEN'S GAMBIT DECLINED

A. B. Stamer. White	C. W. De Graff. Black	A. B. Stamer. White	C. W. De Graff. Black
1—P-Q4	P-K3	25—QR-B	P-K54
2—P-QB4	P-Q4	24—P-KS3	P-S5
3—S-QB3	S-KB3	25—KR-R2	R-B2
4—B-S5	B-K2	26—Q-K2	S-K4
5—BxR3	P-KR3	27—S-K4	B-Q4
6—BxS	RxB	28—S-B5	Q-K2
7—P-K3	P-QB3	29—P-K4	P-S3
8—B-Q3	S-Q2	30—PxS	PxS
9—Castles	PxQB3	31—P-Q6	Q-Q2
10—RxP	S-QS3	32—PxB	R-S
11—B-S7	S-Q4	33—P-S4	P-KR4
12—S-K4	B-K2	34—B-Q2	B-S3
13—R-B	O-O	35—Q-B4	QR-K
14—Q-Q3	B-Q2	36—Q-B4	K-R2
15—P-QR3	P-KB4	37—R-B	P-R3
16—QS-Q2	B-S4	38—Q-B4	Q-S2
17—S-K3	B-K	39—P-QR4	R-Q2
18—B-R2	R-B3	40—R-QS2	R-QS
19—P-KR4	RxS	41—B-QB3	B-S2
20—BxB	R-S3	42—B-B4	Q-R2
21—R-KB3	R-R2	43—B-B4	R(Q2)S2
22—B-S	Q-Q2	44—Q-QB4	Resigns

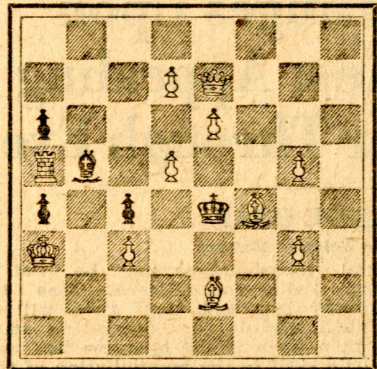
Chess players of Yuba City have organized a club and elected Bjorne C. Dahl secretary, who urges formation of clubs by chess players throughout the towns of the state for team matches and general welfare of the game.

Another installment of Dr. Tarasch's analysis of the P-QB4 defense to the Queen's Gambit Declined will have to be held over on account of extended story of the Portland-San Francisco telegraphic match.

B. C. D.—Pawn takes pawn in passing rule is as follows: When a pawn, advancing two squares on first move, passes a square commanded by adversary's pawn, latter has option of considering pawn to advance out one square and so capture it. For instance, white has pawn at his king's fifth square; black has pawn at queen two (unmoved). If the black pawn advances two squares, white has option of playing PxP, placing his pawn on his queen's sixth square, or he may let the pawn stand at black's queen four. The leading chess publication is the American Chess Bulletin, 150 Nassau street, New York city.

Problems

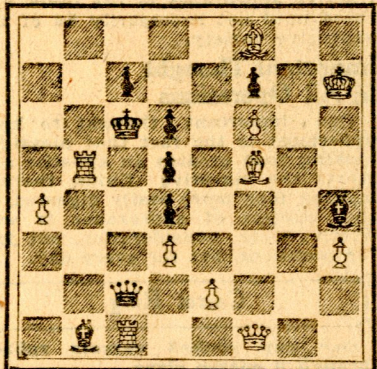
A. J. FINK
PROBLEM NO. 30
By J. JUCHLI
Black—Five Pieces



White—Eleven Pieces
White mates in two moves.

PROBLEM NO. 31

By J. HOOD
Black—Nine pieces



White—Eleven pieces
White mates in three moves.

Solution to No. 28—King to Bishop. Solution to No. 29—King to King. Solvers' list—"A. J. H.," Palo Alto; J. E. Ford, city; J. H. White, city; W. S. Coughlan, Berkeley; J. N. S., San Mateo; J. Fulton, Sacramento.

Solutions to Nos. 26 and 27 received from E. Russell, Oakland; "A. J. H.," Palo Alto; J. H. Owen, city; O. Hagman, Watsonville; W. D. Moore, Napa; J. C. Spence, Oakland; J. N. S., San Mateo; E. L. Church, Abwhanee; F. B. Rodolph, Oakland; J. Fulton, Sacramento.

J. C. Spence—Two-mover received, will look it over.

A. J. H. — If QxP ch, take notice that white is in check—R-R3 only move.

A. M. Oakland—The answer is knight to bishop three.

Edward Lasker of Chicago was winner of the Western Chess Association championship tournament, held at Chicago, with 9½ to 1½. S. Factor, the Russian master, was second, 9 to 2, and H. Hahlfohm, also of Chicago, third, 8½ to 3½. Lasker announced that he will challenge F. J. Marshall for the United States championship. Among the other competitors was Norman Whitaker of Washington, D. C., who failed to finish among the leaders.