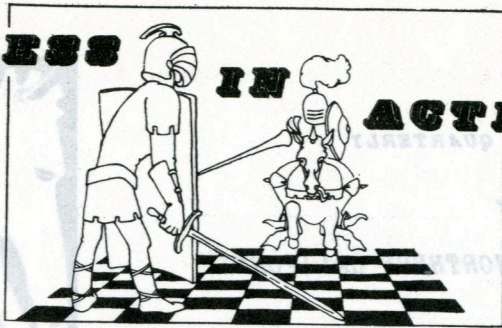
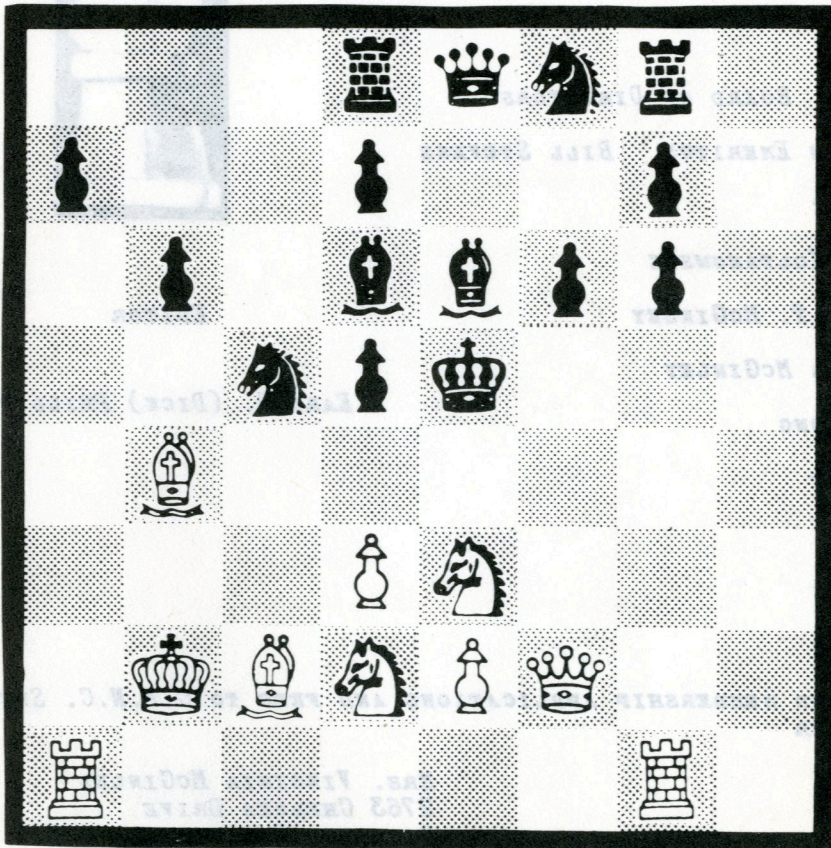


CHES IN ACTION



WINTER 1966



A WHIMSY, PERHAPS! WHITE TO MOVE AND MATE IN 2. THUS OUR 1967 WISH TO YOU: (PEACE)

PUBLISHED QUARTERLY

BY

CHESS FRIENDS OF NORTHERN CALIFORNIA

A CHARTER MEMBER OF THE UNITED STATES
CHESS FEDERATION



C.F.N.C. BOARD OF DIRECTORS

CHAIRMAN EMERITUS BILL STEVENS

MEMBERS:

GEORGE KOLTANOWSKI

CHARLES T. MCGINLEY

VIRGINIA MCGINLEY

JERRY LONG

JIM HURT

EDITOR

EARL R. (DICK) PHILLIPS

SEND YOUR MEMBERSHIP APPLICATIONS AND FEES TO C.F.N.C. SECRETARY-
TREASURER

MRS. VIRGINIA MCGINLEY
2763 CHELSEA DRIVE
OAKLAND, CALIFORNIA 94611.

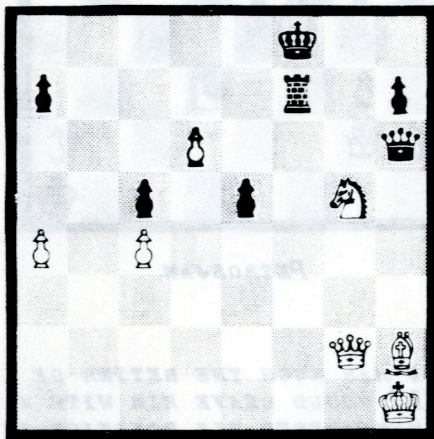
ALL CORRESPONDENCE RELATING TO THIS PUBLICATION AND ITS CONTENTS
SHOULD BE MAILED TO THE EDITOR, P. O. BOX 652, SAN JOSE, CALIFOR-
NIA 95106.

THE WORLD CHAMPION'S FAVORITE COMBINATION

TEN YEARS AGO THE MOSCOW CHAMPIONSHIP ENDED IN A DRAW BETWEEN PETROSJAN AND SIMAGIN. A FIVE-GAME PLAYOFF WAS NECESSARY TO DETERMINE THE CHAMPION. AFTER FOUR GAMES PETROSJAN LED BY 2.5 TO 1.5. THE FIFTH GAME WAS ADJOURNED IN A VERY COMPLICATED POSITION.

PETROSJAN HAD TWO PIECES FOR A ROOK, BUT HIS KING WAS NOT VERY SAFE, WHICH ENABLED SIMAGIN TO CREATE SOME COUNTERPLAY. FINALLY THE GAME REACHED THE DIAGRAMMED POSITION.

SIMAGIN

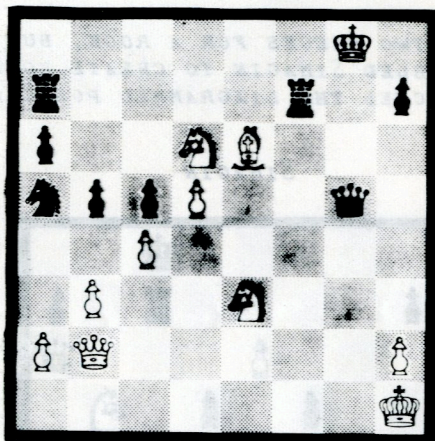


PETROSJAN

SIMAGIN THOUGHT HE HAD FOUND HIS CHANCE TO LIQUIDATE THE DANGEROUS PASSED PAWN BY 43. ---, QXP; 44. NXR, THEN BLACK HAS A PERPETUAL CHECK BY 44. ---, Q-Q8ch; 45. B-N, Q-R5ch; ETC. BUT WHITE HAD FORESEEN THE SITUATION AND PREPARED THE FOLLOWING WINNING COMBINATION; 44. Q-QR8ch, K-N7; (QUITE HOPELESS IS ALSO 44. ---, K-K7; 45. QXPch, ETC.) 45. BXPch, QAB; 46. Q-KR8ch!, KXQ; 47. NXRch, K-N2; 48. NXQ AND SIMAGIN RESIGNED. A VERY NICE "LITTLE COMBINATION" AS CAPABLANCA USED TO SAY.

Now, after ten years Petrosjan had the opportunity to demonstrate that he had not forgotten his game with Simagin. In game ten of the World Championship Match in Moscow Petrosjan had to solve many crucial combinative problems against Spasski. Sacrificing the exchange, Petrosjan obtained a very dangerous attacking position. With time trouble approaching, one could expect decisive action on the side of the world champion. After move 28 the game arrived at the following position.

SPASSKI



PETROSJAN

CERTAINLY WHITE HAS MUCH THE BETTER OF IT. EVEN THE DOUBLE EXCHANGE ON KB7 WOULD LEAVE HIM WITH A WON ENDING. PETROSJAN MUST HAVE REMEMBERED HIS POSITION IN THE GAME WITH SIMAGIN AS THE COMBINATIVE IDEA OF THAT GAME IS FULLY REPEATED HERE. PETROSJAN PLAYED 29. BXRch, RxB; 30. Q-R8ch,!! AND SPASSKI RESIGNED AS 30. ----, K-N7; 31. NXQ, LEAVES BLACK A PIECE DOWN.

A CURIOUS COINCIDENCE OF FACTS. I THINK WE MAY CALL THE SACRIFICE OF THE QUEEN AT KR8! A FAVORITE COMBINATION OF THE PRESENT WORLD CHAMPION!

PAUL KERES

THE ADVANTAGE

MANY CRITERIA ARE GIVEN TO THE AVERAGE PLAYER TO EVALUATE A POSITION. DOUBLED AND ISOLATED PAWNS ARE CONSIDERED WEAKNESSES. TWO BISHOPS AGAINST A BISHOP AND A KNIGHT, AND CONTROL OF AN OPEN FILE ARE CALLED ADVANTAGES. YET, THE AVERAGE PLAYER IS TOLD, THERE ARE EXCEPTIONS, ACCORDING TO THE POSITION.

THE REASON THERE ARE EXCEPTIONS IS THAT DOUBLED AND ISOLATED PAWNS ARE NOT THE FUNDAMENTAL REASONS A POSITION IS WEAK; CONTROL OF AN OPEN FILE IS NOT THE FUNDAMENTAL REASON A POSITION IS STRONG.

IN CHESS, THE PLAYER HAVING THE MOST ALTERNATIVES HAS THE ADVANTAGE. THUS, ALL ELSE BEING EQUAL, WHEN ONE HAS DOUBLED PAWNS, HE SIMPLY HAS FEWER ALTERNATIVES THAN HIS OPPONENT. E. LASKER ONCE WROTE, THAT GIVEN THE CHOICE OF TWO DEVELOPING MOVES, ONE WHICH HAS TO BE MADE ANYWAY, AND ONE WHICH WAS NOT NECESSARY, HE WOULD ALWAYS CHOSE THE FORMER BECAUSE IT WOULD GRANT HIM MORE ALTERNATIVES. THUS, THE OLD RULE: IN THE OPENING, DEVELOP KNIGHTS BEFORE BISHOPS, SINCE IN THE OPENING, THE BISHOP SIMPLY HAS MORE CHOICES OF A GOOD SQUARE THAN THE KNIGHT.

IN THE FOLLOWING GAME, WHITE WINS BECAUSE HE MAINTAINS MORE ALTERNATIVES THAN HIS OPPONENT.

PLAYED IN SAN JOSE - 1964 QUEEN'S GAMBIT ACCEPTED

WHITE - SACCUZZO

BLACK - GAZZE

1. P-Q4
2. P-QB4
3. N-KB3
4. P-K4

1. P-Q4
2. PXP
3. P-KN3

IN THE QUEEN'S GAMBIT ACCEPTED, WHITE CANNOT PLAY 3. P-K4 BECAUSE OF 3...P-K4! WHICH EQUALIZES FOR BLACK. BUT SINCE BLACK CAN NO LONGER PLAY P-K4, WHITE PLAYS HIS PAWN TO KING 4 WITHOUT FEAR.

5. N-B3
6. B-B4

4. B-N2
5. N-KB3
6. F-B3

BLACK'S IDEA IS TO WIN OF WHITE'S CENTER PAWNS.

7. BXP
8. O-O
9. B-K3

7. O-O
8. B-N5

THE QUEEN PAWN MUST BE PROTECTED SO THAT WHITE CAN ANSWER BXP WITH QXB.

10. B-Q3

9. P-QN4

IF 10. B-N3, THEN BLACK WINS THE KING PAWN WITH P-NS FOLLOWED BY NXP

10. N-K1

MORE PRESSURE ON QUEEN PAWN.

WHITE

BLACK

- 11. P-K5
- 12. P-KR3

- 11. P-QR3
- 12. B-K3 ?

IF BLACK PLAYS BXN, HE HASTENS WHITE'S ATTACK, AND IF HE PLAYS B-Q2, HE MUST EVENTUALLY PLAY P-K3 AND HIS BISHOP WILL BE SHUT OUT OF THE GAME. HIS BEST TRY WAS B-B1 FOLLOWED BY B-N2 AND ATTEMPT TO BREAK THE CENTER WITH AN EVENTUAL P-QB4.

- 13. N-N5
- 14. NxB

- 13. B-Q4
- 14. PXM

BLACK'S BACKWARD QBP CAN AND SHOULD BE EXPLOITED; BESIDES, EXCHANGES FAVOR BLACK. WHITE PREFERS TO MAINTAIN A LARGER NUMBER OF ADVANTAGES: 1. THE OPEN B-FILE FOR A Q-SIDE ATTACK AND 2. SUPERIOR DEVELOPMENT AND MORE SPACE FOR A K-SIDE ATTACK. OF COURSE, IF BLACK 14...., QXN; 15. B-K4, Q-Q2; 16. R-QB1!, ETC.

15. Q-N4 PREPARES K-SIDE ATTACK WITH DOUBLING OF ROOKS IN MIND.

- 15. P-K3

16. QR-B1

- 16. R-R2

17. B-Q2

THE THREAT? B-N4

- 17. N-B2

18. R-B2

- 18. Q-Q2

19. KR-B1

- 19. R-B1 ?

SINKING MAN GRABS WET STRAW.

20. B-R5

INTERESTING TO NOTE THAT BLACK

HAS ONLY 1 FREE PIECE - HIS BISHOP

- 20. P-KR3

21. N-KB3

SACRIFICES ARE NOT NECESSARY.

WHITE WINS BY FORCE.

- 21. B-B

22. P-KR4

- 22. P-R4

23. Q-B4

- 23. B-K2

24. P-KN4

- 24. PXP

25. QXP

- 25. K-B

AFTER 25...., B-Q, WHITE WINS EASILY WITH 26. BXP, PxB; 27. QXNPch, Q-N2, 28. QXQch, KXP; WHEN NOT A SINGLE BLACK PIECE CAN MOVE, AND THE BLACK KING MUST GUARD AGAINST THREAT OF QUEENING KR.P.

26. P-R5

- 26. PXP

27. QXR.P

- 27. K-I

28. Q-R8ch

- 28. B-B

29. B-N4

- 29. RESIGNS

BY DENNIS SACCUZZO

Rating Administrator's Report: IRS has proved successful in two recent CFNC tournaments, the 1966 Northern California Class Championship Tournament and the 1966 October Open; for the results of these tournaments and the resulting changes in ratings of participants, please refer to the following pages. These ratings, combined with the ratings presented in the 1966 fall issue of "Chess in Action", constitute the official CFNC rating list as of November 1966. League match games will change some of these ratings, and a supplementary rating list reflecting these rating changes will be available for the next CFNC tournament scheduled for January 1967.

Attention Team Captains: Some of you have not forwarded your game scores (which show rating changes between players) to the rating administrator for verification. Please send scores of all your players for all league matches (past & present) to: James Hurt, P. O. Box 451, Sunnyvale, so that we can verify these ratings and issue a supplementary rating list for our next upcoming CFNC tournament.

1967 PENINSULA OPEN CHESS CHAMPIONSHIP TOURNAMENT. The LERA Chess Club will sponsor the second annual PENINSULA OPEN 5-round tourney on the weekend of April 8/9 1967. Present plans include: George Koltanowski, International Chess Master, as tournament director; Master/Expert, A, B, and C divisions; winner of the Master/Expert division to qualify directly for the 1967 California State Championship Tournament; big money prizes (\$100 first prize); and five trophies for each division. First round for the M/E division will be played Friday evening (April 7) with a 40 moves in 2 hours time limit. Entry fee for M/E division will be \$10.00 and entry fee for A, B, and C divisions will be \$7.00. Start planning now for this big event.

LATE RATING CHANGES

GRIVAINIS, K.	1994	GALINDEZ, M.	1640
ALRICH	1979	BELTRAM, D.	1636
SHAIL, J.	1946	BAER, H.	1624
TRENBERTH, R.	1921	SCHAHSHAHAM	1619
CUNEO, R.	1871	SMIRIGA	1611
MCCORNEY	1860	CAMPBELL, D.	1585
SINS	1827	EICHE	1574
MCGINLEY, C.	1822	COOK, E.	1564
COOK, T. J.	1760	PERNISH	1510
LONG, J.	1724	DENNIS, J.	1493
SMITH, D.	1713	LA BONTE	1448
RCY	1688	RACKETT, R.	1438

**RESULTS OF THE 1966 NORTHERN CALIFORNIA CHESS CHAMPIONSHIP TOURNAMENT
FOR CLASSES A, B, AND C**

The 1966 Northern California Chess Championship Tournament for Classes A, B, and C was sponsored by the LERA Chess Club as a C.F.N.C. event on the weekend of September 17/18, 1966. George Koltanowski, International Chess Master, acted as Tournament Director. Chuck Chattin acted as Rating Statistician, utilizing the new Instantaneous Rating System (IRS). The results for each class are presented in the following tables, showing not only the win-draw-loss record but also the change in rating points round-by-round for each player.

Congratulations are extended to Carl Freeman, Sunnyvale, for becoming the 1966 Class A Champion of Northern California; to Don Hoekman, Novato, for becoming the 1966 Class B Champion of Northern California; and to Zeb Vancura, Santa Clara, for becoming the 1966 Class C Champion of Northern California.

Five trophies were presented to the first five players of each class, and a \$75.00 prize for the highest score plus a \$40.00 prize for the second highest score were presented for each class.

At present, plans are already underway to repeat this tournament in September of 1967.

	CLASS A PLAYER	START RATING	START					SCORE
			ROUND 1	ROUND 2	ROUND 3	ROUND 4	ROUND 5	
1	C. Freeman	1995	W19 2007	D6 2004	W2 2016	W14 2028	W4 2043	4½-1½
2	S. Johnson	1878	W5 1897	W3 1915	L1 1903	W7 1921	W10 1936	4-1
3	C. Schroth	1934	W21 1947	L2 1929	W15 1942	W9 1955	W6 1971	4-1
4	D. Forthoffer	1952	W16 1965	W18 1976	W14 1990	W11 2006	L1 1991	4-1
5	R. Ng	1952	L2 1934	D12 1932	W20 1946	W15 1956	W11 1973	3½-1½
6	R. Thompson	1923	W15 1936	D1 1939	D9 1936	W13 1950	L3 1934	3-2
7	J. Hurt	1938	D10 1935	D9 1932	W16 1946	L2 1928	W13 1942	3-2
8	R. Hammie	1920	L9 1901	L10 1884	W17 1897	W18 1910	W16 1925	3-2
9	L. Eaton	1846	W8 1865	D7 1868	D6 1871	L3 1858	D12 1859	2½-2½
10	R. McCollough	1870	D7 1873	W8 1890	L11 1877	W12 1896	L2 1881	2½-2½
11	P. Grey	1960	W13 1973	D* 1973	W10 1986	L4 1970	L5 1953	2½-2½
12	R. Carlisle	1911	L18 1892	D5 1894	W19 1909	L10 1883	D9 1882	2-3
13	A. Chappell	1880	L11 1867	W17 1881	W18 1895	L6 1881	L7 1867	2-3
14	D. Saccuzzo	1910	D17 1923	W21 1936	L4 1922	L1 1910	F 1910	2-3
15	T. Nast	1860	L6 1847	W20 1865	L3 1852	L5 1839	W18 1854	2-3
16	R. Baker	1875	L4 1862	W19 1879	L7 1865	W20 1881	L8 1866	2-3
17	N. Babbitt	1824	L14 1811	L13 1797	L8 1784	W19 1799	W20 1817	2-3
18	R. Cuneo	1832	W12 1851	L4 1840	L13 1826	L8 1813	L15 1798	1-4
19	R. Mitchell	1903	L1 1891	L16 1874	L12 1859	L17 1841	B 1841	1-4
20	F. Neal	1900	D* 1900	L15 1882	L5 1868	L16 1852	L17 1834	½-4½
21	M. Gazse	1866	L3 1853	L14 1839	F 1839	F 1839	F 1839	0-5

*Draw decreed by Tournament Director.

W = won from, L = lost to, D = draw with, F = forfeit (did not show for his game), and B = bye, as no player available as an opponent. An F scores as a loss, a B scores as a win, but rating points are not affected by either.

	CLASS B PLAYER	START RATING	ROUND 1	ROUND 2	ROUND 3	ROUND 4	ROUND 5	SCORE
1	D. Hoekman	1692	W36 1705	W30 1723	W8 1738	W13 1754	W9 1769	5-0
2	J. Evans	1790	W6 1802	W38 1814	D4 1810	D9 1807	W18 1820	4-1
3	D. Amkraut	1668	W11 1687	L14 1672	W42 1692	W32 1710	W12 1728	4-1
4	M. Lane	1692	W34 1705	W21 1725	D2 1729	D12 1730	W13 1746	4-1
5	M. Galindez	1630	L20 1617	B 1617	W28 1637	W25 1657	W14 1676	4-1
6	P. Vayssie	1680	L2 1668	W37 1681	W7 1698	D22 1700	W24 1718	3½-1½
7	D. Harris	1676	W27 1695	D15 1696	L6 1680	W26 1696	W22 1714	3½-1½
8	D. Betanco	1654	W32 1673	W26 1689	L1 1674	D11 1677	W27 1696	3½-1½
9	R. Raingruber	1683	W42 1703	W28 1720	W20 1737	D2 1740	L1 1725	3½-1½
10	H. Duncanson	1688	W37 1701	D31 1704	L12 1690	W36 1702	W21 1722	3½-1½
11	R. Miao	1749	L3 1730	W43 1738	W34 1749	D8 1746	W20 1761	3½-1½
12	W. Jachens	1740	W16 1753	D18 1751	W10 1765	D4 1764	L3 1746	3-2
13	E. Phillips	1686	W19 1707	W29 1721	W14 1737	L1 1721	L4 1705	3-2
14	C. Leete	1706	W43 1716	W3 1731	L13 1715	W31 1733	L5 1714	3-2
15	R. Roubal	1715	W40 1728	D7 1727	L24 1712	D21 1708	W31 1726	3-2
16	W. Giles	1662	L12 1649	L41 1636	W37 1649	W24 1670	W30 1689	3-2
17	N. Smith	1650	W41 1669	L20 1655	L21 1644	W38 1663	W32 1681	3-2
18	D. Lieberman	1700	B 1700	D12 1702	D31 1705	W30 1723	L2 1710	3-2
19	T. Makens	1799	L13 1778	L23 1756	W46 1766	W33 1776	W38 1789	3-2
20	J. Cornwall	1712	W5 1725	W17 1739	L9 1722	D27 1723	L11 1708	2½-2½
21	P. Lamasney	1798	W35 1809	L4 1789	W17 1800	D15 1796	L10 1776	2½-2½
22	W. Montfort	1736	D45 1737	D25 1732	W29 1744	D6 1742	L7 1724	2½-2½
23	L. Wilson	1650	L30 1637	W19 1653	L27 1641	W42 1667	D25 1669	2½-2½
24	J. Peterson	1750	D26 1747	W45 1759	W15 1774	L16 1753	L6 1735	2½-2½
25	N. Wild	1712	D33 1709	D22 1710	W41 1727	L5 1707	D23 1705	2½-2½
26	P. Aubry	1672	D24 1675	L8 1659	W39 1675	L7 1659	W40 1674	2½-2½
27	G. Koloboff	1754	L7 1735	W44 1746	W23 1758	D20 1757	L8 1738	2½-2½
28	R. Gribble	1728	W46 1740	L9 1723	L5 1703	W34 1715	D29 1712	2½-2½
29	T. Hogan	1636	W47 1656	L13 1642	L22 1630	W41 1649	D28 1652	2½-2½
30	J. Bikulcius	1734	W23 1747	L1 1729	W33 1741	L18 1724	L16 1706	2-3
31	D. Lynn	1769	W39 1781	D10 1778	D18 1775	L14 1757	L15 1739	2-3
32	W. Fields	1738	L8 1719	W40 1731	W36 1742	L3 1724	L17 1705	2-3
33	E. Mugnani	1630	D25 1633	D39 1634	L30 1622	L19 1612	W41 1631	2-3
34	H. Russell	1610	L4 1597	W35 1616	L11 1605	L28 1593	W46 1610	2-3
35	H. Poschman	1684	L21 1673	L34 1654	D40 1652	D46 1650	W43 1661	2-3
36	J. Sutherland	1622	L1 1609	BYE 1609	L32 1598	L10 1586	W39 1609	2-3
37	R. Schneider	1606	L10 1593	L6 1580	L16 1566	W44 1583	W42 1605	2-3
38	D. Burgess	1694	W44 1707	L2 1695	W47 1709	L17 1690	L19 1687	2-3
39	M. Bowen	1678	L31 1666	D33 1665	L26 1649	W43 1661	L36 1642	1½-3½
40	J. Gillis	1636	L15 1623	L32 1611	D35 1613	W45 1630	L26 1615	1½-3½
41	W. Zimmerman	1734	L17 1715	W16 1728	L25 1711	L29 1692	L33 1673	1-4
42	J. Dwyer	1794	L9 1774	W46 1784	L3 1764	L23 1743	L37 1721	1-4
43	M. Johnson	1545	L14 1535	L11 1527	W44 1546	L39 1534	L35 1523	1-4
44	C. Black	1627	L38 1614	L27 1603	L43 1584	L37 1567	B 1567	1-4
45	P. Zink	1654	D22 1657	L24 1645	L38 1631	L40 1614	F 1614	½-4½
46	A. Gardner	1636	L28 1624	L42 1614	L19 1604	W35 1606	E34 1584	½-4½
47	J. Camahort	1731	L29 1711	F 1711	F 1711	F 1711	F 1711	0-5

CLASS C		START	STATE					SCORE
PLAYER	RATING	ROUND 1	ROUND 2	ROUND 3	ROUND 4	ROUND 5		
1	Z. Vancura	1550	W36 1568	W19 1585	W21 1599	W11 1615	W3 1632	5-0
2	L. Williams	1550	W33 1566	W13 1580	W4 1596	D8 1596	W16 1609	4½-1½
3	L. Gerard	1593	W5 1607	W10 1619	W12 1632	W16 1644	L1 1627	4-1
4	R. Tucker	1557	W38 1573	W27 1585	L2 1569	W12 1584	W14 1597	4-1
5	H. Glading	1550	L8 1536	W40 1552	W23 1568	W30 1583	W8 1600	4-1
6	J. Warner	1424	W39 1445	L26 1434	B 1434	W18 1455	W11 1476	4-1
7	L. Dunning	1590	W44 1604	W30 1618	L8 1600	W26 1615	W13 1629	4-1
8	J. Weiler	1546	W32 1562	W22 1579	W7 1597	D2 1597	L5 1580	3½-1½
9	E. Rowe	1550	L11 1535	W24 1551	D27 1548	W19 1565	W22 1581	3½-1½
10	M. Sullivan	1490	W41 1508	L3 1496	D35 1497	W34 1514	W21 1530	3½-1½
11	E. Cole	1566	W9 1581	W14 1593	W26 1608	L1 1592	L8 1571	3-2
12	F. Goss	1508	W34 1526	W17 1545	L3 1532	L4 1517	W28 1534	3-2
13	G. Lee	1504	W29 1522	L2 1508	W32 1526	W20 1545	L7 1531	3-2
14	C. Giallanza	1460	W18 1480	L11 1468	W38 1487	W31 1506	L4 1493	3-2
15	T. Bartos	1550	D19 1551	D36 1552	L20 1537	W39 1553	W31 1569	3-2
16	G. Metcalf	1470	W31 1489	W42 1509	W30 1527	L3 1515	L2 1502	3-2
17	A. Gullmes	1596	W28 1610	L12 1591	L31 1573	W38 1587	W29 1601	3-2
18	M. Feliz	1550	L14 1530	W35 1546	W37 1563	L8 1542	W26 1558	3-2
19	R. Hofvendahl	1584	D15 1583	L1 1566	W34 1581	I9 1564	W35 1579	2½-2½
20	F. Valenzuela	1576	L26 1559	W41 1574	W15 1589	L13 1570	D23 1569	2½-2½
21	J. Powell	1488	W24 1506	W37 1526	L1 1512	D22 1517	L10 1498	2½-2½
22	J. Dennis	1564	W35 1579	L8 1562	W29 1577	D21 1574	L9 1558	2½-2½
23	T. Kopozynski	1550	L37 1535	W39 1551	L5 1535	W32 1551	D20 1552	2½-2½
24	B. Jacks	1550	L21 1532	L9 1516	W33 1532	W40 1547	D25 1545	2½-2½
25	C. O'Brien	1484	L30 1471	L29 1457	W41 1475	W36 1494	D24 1496	2½-2½
26	S. Shahshahari	1550	W21 1567	W6 1578	L11 1563	L7 1548	L18 1532	2-3
27	R. Uomini	1456	W40 1476	L4 1464	D9 1467	D28 1470	L34 1455	2-3
28	R. Williams	1550	L17 1536	D34 1536	W36 1554	D27 1551	L12 1534	2-3
29	D. Rhodes	1550	L13 1532	W25 1546	L22 1531	W37 1548	L17 1534	2-3
30	L. Stemper	1550	W25 1563	L7 1549	L16 1531	L5 1516	W40 1531	2-3
31	P. Beem	1550	L16 1531	W44 1547	W17 1565	L14 1546	L15 1530	2-3
32	J. Fosaaen	1552	L8 1536	W33 1552	L13 1534	L23 1518	W37 1535	2-3
33	T. Adams	1550	L2 1534	L32 1518	L24 1502	W43 1518	W38 1534	2-3
34	K. Brown	1550	L12 1532	D28 1532	L19 1517	L10 1501	W27 1516	1½-3½
35	H. Dryfoos	1550	L22 1535	L18 1519	D10 1518	W41 1533	L19 1518	1½-3½
36	F. Sommer	1593	L1 1575	D15 1574	L28 1556	L25 1537	W39 1552	1½-3½
37	E. Ipsen	1584	W23 1599	L21 1579	L18 1562	L29 1546	L32 1529	1-4
38	J. Harper	1550	L4 1534	W43 1550	L14 1531	L17 1517	L33 1501	1-4
39	B. Sobotka	1550	L6 1529	L23 1513	W43 1529	L15 1513	L36 1498	1-4
40	D. Detrick	1550	L27 1530	L5 1514	B 1514	L24 1499	L30 1484	1-4
41	D. Sanks	1550	L10 1532	L20 1517	L25 1499	L35 1484	B 1484	1-4
42	D. Meixsell	1576	W43 1591	L16 1571	F 1571	F 1571	F 1571	1-4
43	A. Kaye	1550	L42 1535	L38 1519	L39 1503	L33 1487	F 1571	0-5
44	K. Oppenheimer	1550	L7 1536	L31 1520	F 1520	F 1520	F 1520	0-5

RESULTS OF THE 1966 C.F.N.C. OCTOBER OPEN CHESS TOURNAMENT

The 1966 October Open was held at the Berkeley Y.M.C.A. on the weekend of October 22/23, 1966. Jerry Long acted as Tournament Director and the Instantaneous Rating System was utilized. The results for each class are presented in the following tables, showing not only the win-draw-loss record but also the change in rating points round-by-round for each player.

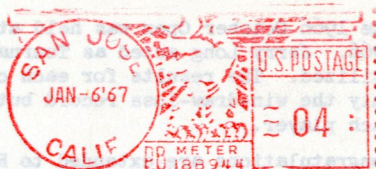
Congratulations are extended to R. Trenberth, Oakland; D. Hoekman, Novato; and J. Fosaaen, Concord, for winning Class A, Class B, and Class C, respectively.

CLASS A		START										SCORE
	PLAYER	RATING	ROUND 1	ROUND 2	ROUND 3	ROUND 4	ROUND 5					
1	R. Trenberth	1949	D7 1945	W12 1954	W9 1964	W5 1978	D2 1974				4-1	
2	J. Ulrich	1850	W4 1864	W3 1883	L5 1867	W8 1881	D1 1885				3½-1½	
3	K. Grivainis	1917	W6 1929	L2 1910	W7 1923	D4 1919	W5 1934				3½-1½	
4	R. Cuneo	1798	L2 1784	W6 1801	W10 1819	D3 1823	W8 1838				3½-1½	
5	R. McCollough	1881	W8 1894	D12 1890	W2 1906	L1 1892	L3 1877				2½-2½	
6	J. Evans	1820	L3 1808	L4 1791	W11 1799	W10 1816	D7 1817				2½-2½	
7	R. Mitchell	1841	D1 1845	D10 1845	L2 1832	D9 1830	D6 1829				2-3	
8	K. Yamamoto	1803	L5 1790	W11 1799	W12 1813	L2 1799	L4 1784				2-3	
9	C. McGinley	1783	W11 1792	D5 1796	L1 1786	D7 1788	F12 1788				2-3	
10	D. Ackerman	1850	D12 1846	D7 1846	L4 1828	L6 1811	D11 1803				1½-3½	
11	R. Horn	1618	L9 1609	L8 1600	L6 1592	W12 1614	D10 1622				1½-3½	
12	W. McKaig	1756	D10 1760	L1 1751	L8 1737	L11 1715	BYE 1715				1½-3½	

CLASS B												SCORE
1	D. Hoekman	1769	W18 1781	W4 1793	D2 1790	W16 1803	W5 1814				4½-½	
2	D. Betanco	1696	W15 1709	W7 1722	D1 1725	D3 1727	W11 1743				4-1	
3	R. Miao	1761	W16 1773	W10 1785	D5 1779	D2 1777	D4 1774				3½-1½	
4	J. Mathis	1650	W13 1669	L1 1657	W19 1675	W10 1690	D3 1693				3½-1½	
5	A. Gullnes	1601	W20 1620	W17 1640	D3 1646	W8 1666	L1 1655				3½-1½	
6	P. Nielsen	1674	D8 1676	W21 1691	W11 1708	L1 1695	W15 1708				3½-1½	
7	R. Schneider	1605	W21 1624	L2 1611	W17 1630	W19 1648	D8 1651				3½-1½	
8	C. Sullivan	1722	D6 1720	W14 1733	W9 1745	L5 1725	D7 1722				3-2	
9	Z. Vancura	1632	W19 1651	L11 1637	L8 1625	W15 1641	W13 1660				3-2	
10	J. Bush	1646	W12 1665	L3 1653	B20 1653	L4 1638	W17 1656				3-2	
11	R. Gribble	1712	BYE 1712	W9 1726	L6 1709	W12 1725	L2 1709				3-2	
12	H. Duncanson	1722	L10 1703	L18 1685	W14 1699	L11 1683	W19 1698				2-3	
13	D. Buchanon	1728	L4 1709	L20 1691	W21 1705	W18 1719	L9 1700				2-3	
14	C. Ehnman	1635	D17 1638	L8 1625	L12 1611	W21 1628	D18 1628				2-3	
15	E. Mignani	1631	L2 1618	BYE 1618	W18 1636	L9 1620	L6 1607				2-3	
16	P. McElaney	1650	L3 1638	L19 1624	BYE 1624	L17 1610	W21 1626				2-3	
17	D. Harris	1714	D14 1711	L5 1691	L7 1672	W16 1686	L10 1668				1½-3½	
18	H. Poschmann	1661	L1 1649	W12 1667	L15 1649	L13 1635	D14 1635				1½-3½	
19	D. Phillips	1705	L9 1686	W16 1700	L4 1682	L7 1664	L12 1649				1-4	
20	M. Galindez	1676	L5 1657	W13 1675	F10 1675	F 1675	F 1675				1-4	
21	N. Smith	1681	L7 1662	L6 1647	L13 1633	L14 1616	L16 1600				0-5	

CLASS C												SCORE
1	J. Fosaaen	1535	W5 1553	W3 1571	W4 1586	W2 1601	W6 1616				5-0	
2	M. Sullivan	1530	D6 1531	W11 1547	W5 1564	L1 1549	W3 1567				3½-1½	
3	J. Weiler	1580	W7 1594	L1 1576	W6 1592	W10 1605	L2 1587				3-2	
4	M. Johnson	1523	W8 1540	W9 1557	L1 1542	L6 1527	W7 1544				3-2	
5	J. Friedman	1573	L1 1555	W7 1570	L2 1553	W11 1568	W8 1583				3-2	
6	L. Trotter	1560	D2 1559	W10 1573	L1 1557	W4 1572	L1 1557				3½-2½	
7	A. Eiche	1540	L3 1526	L5 1511	W8 1529	W12 1541	L4 1524				2-3	
8	J. Dennis	1558	L4 1541	W12 1554	L7 1536	W9 1552	L5 1537				2-3	
9	G. Hayes	1550	W12 1563	L4 1546	L10 1528	L8 1512	W11 1528				2-3	
10	E. Detrick	1484	W11 1503	L6 1489	W9 1507	L3 1494	F12 1494				2-3	
11	S. Hibbard	1550	L10 1531	L2 1515	W12 1528	L5 1513	L9 1497				1-4	
12	R. Racket	1470	L9 1457	L8 1444	L11 1431	L7 1419	BYE 1419				1-4	

CHESS FRIENDS OF NORTHERN CALIFORNIA
2763 CHELSEA DRIVE
OAKLAND, CALIFORNIA 94611



Richard Lee
2500 Wallace St. Apt. 5
Oakland, Calif

IMPORTANT INNOVATION IN NORTHERN CALIFORNIA CHESS!! On January 21 and 22, 1967 the open championship of Northern California will be sponsored by CFNC. The event will be held at the Berkeley YMCA, 2001 Allston Way, Berkeley. The overall champion will win a \$50.00 prize plus a trophy plus all expenses to the California Championship. There are money prizes, plaques and trophies for every division of playing strength. The extraordinary event is further made interesting by the fact that CFNC members pay only \$5.00 entry fee while others must pay an \$8.00 entry fee. George Koltanowski will direct. Send your entry fee and state your division to: Mrs. Virginia McGinley, 2763 Chelsea Drive, Oakland, Calif. 94611. Watch your newspaper for further details. We strongly recommend an early entry as all feel that this will be one of the best tourneys in the coming year.

CFNC members will be pleased to note that, in addition to the above open championship, no less than three city opens are already scheduled in the coming year:

CONCORD OPEN
WALNUT CREEK OPEN
BERKELEY OPEN

FEB. 18 & 19
APR. 22 & 23
JUN. 24 & 25

We ask that you dry your tears for there is no editorial in this issue. It is our hope that the CFNC membership will deluge us with games and analyses for our mutual benefit. Watch the next issue for a game and comments by Erik Osbun, USCF Master.

If we receive a large enough written response your editor will be pleased to attempt a monthly issue of Chess in Action. It's up to you.