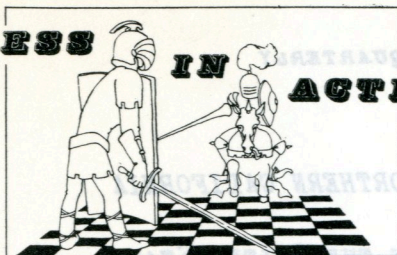
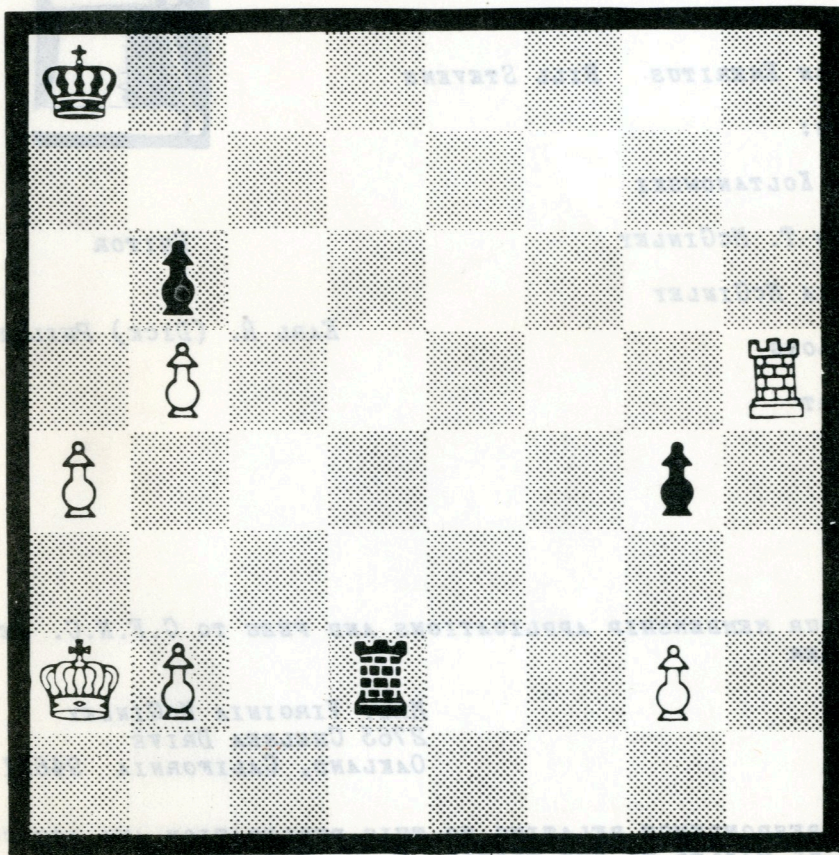


# CHESS IN ACTION



SPRING 1967



WIN, LOSE, OR DRAW? SEE ENDGAME COMMENTS BY ERIK OSBUN.

PUBLISHED QUARTERLY

BY

CHESS FRIENDS OF NORTHERN CALIFORNIA

A CHARTER MEMBER OF THE UNITED STATES  
CHESS FEDERATION



C.F.N.C. BOARD OF DIRECTORS

CHAIRMAN EMERITUS BILL STEVENS

MEMBERS:

GEORGE KOLTANOWSKI

CHARLES T. MCGINLEY

VIRGINIA MCGINLEY

JERRY LONG

JIM HURT

EDITOR

EARL R. (DICK) PHILLIPS

SEND YOUR MEMBERSHIP APPLICATIONS AND FEES TO C.F.N.C. SECRETARY-  
TREASURER

MRS. VIRGINIA MCGINLEY  
2763 CHELSEA DRIVE  
OAKLAND, CALIFORNIA 94611.

ALL CORRESPONDENCE RELATING TO THIS PUBLICATION AND ITS CONTENTS  
SHOULD BE MAILED TO THE EDITOR, P. O. BOX 652, SAN JOSE, CALIFOR-  
NIA 95106.

END GAME COMMENTS

ERIK OSBUN

THE COVER ON THIS ISSUE HAS THE ADJOURNED POSITION OF A GAME WHEREIN OSBUN (WHITE) MET A. KANAMORI (BLACK) IN THE LOCKHEED "MASTERS" TOURNAMENT, 1966. ALMOST EVERYBODY THOUGHT IT WAS AN EASY DRAW. IN FACT, KANAMORI OFFERED A DRAW SEVERAL TIMES. BLACKSTONE, IN DISCUSSING THE POSITION AFTER ADJOURNMENT, HAD APPARENTLY REFUTED THE WINNING LINES I HAD IN MIND. LATER THAT NIGHT, HOWEVER, I FOUND TWO SUCCESSIVE ZUGZWANG POSITIONS WHICH JUSTIFIED CONTINUATION.

41. R-N5 (SEALED), RxQNP; 42. K-R3, P-N6 (BEST); 43. P-N4, R-N8;  
44. P-R5, P-N7; 45. K-R2,

NOT 45. K-N2? PXP; 46. PXP, R-B8; 47. RXP, R-B4 = .

AFTER THE TEXT, THIS LINE CAN BE MET WITH 48. R-N2, A BOOK WIN.

45. . . . , K-N2?

LOSES BY ONE TEMPO. THE DRAWING LINE IS 45. . . . , R-QRB!;  
46. RXP, R-R4; 47. R-N8 CK, K-R2!; 48. R-N7 CK, K-R; 49. P-R6,  
RXP; 50. K-N3 (1 MOVE TOO LATE) R-QR4; 51. K-R4, R-QB4 (NOT  
51. . . . , P-N4 CK; 52. K-R5 ); 52. R-KN7, R-B3! = . IF 52. K-N5,  
R-B4 CK; OR 52. R-KB7, R-B4. NOT SO EASY!

46. R-N7 CK, K-N; 47. R-N8 CK, K-N2; 48. P-R6 CK, K-R2; 49. K-N2,

THE FIRST ZUGZWANG FORCING THE WIN OF THE QNP.

49. . . . , R-QB8; 50. RXP, R-B4; 51. R-N7 CK, K-R; 52. K-N3, RXP ?

52. . . . , R-QR4! AVOIDS THE ZUGSZWANG AND DRAWS BECAUSE THE  
WHITE KING CANNOT PASS HIS FOURTH RANK.

53. R-N7,

THE 2ND ZUGZWANG, FORCING THE WIN OF THE KNP. IF NOW 53. . . . ,  
RXP CK; 54. KXR AND, FORTUNATELY FOR WHITE, BLACK HAS 54. . . . ,  
P-N4. FROM THIS POINT ON WHITE HAS THE BOOK WIN. ALL WHITE  
NEED DO IS ADVANCE CIRCUMSPECTLY AND MAINTAIN CONTROL OF THE  
BLOCKADING SQUARE KN6.

53. . . . , R-QR4; 54. RXP, K-R2; 55. R-KB6, R-QN4; 56. K-B4, R-QR4;  
57. R-K6, R-QN4; 58. P-N5, R-N2; 59. K-K5, R-N4 CK; 60. K-B6, R-N;  
61. R-K7 CK, K-N; 62. P-N6, R-KB CK; 63. K-K6, R-R; 64. R-Q7, R-K CK;  
65. K-Q6, K-R; 66. K-B7, RESIGNS.

DO YOU THINK THAT THIS ENDING HAS ANY THEORETICAL VALUE? I  
CANNOT FIND AN ANALOGOUS ENDING IN ANY OF MY ENDGAME BOOKS.

\* \* \* \* \*

ED'S. NOTE: WE WISH MORE MASTERS AND EXPERTS WOULD GIVE US THEIR  
INSIGHTS TO END GAMES AS ABOVE. WE ASK ALL MEMBERS TO SHOW MR.  
OSBUN FOR WE COULD USE MORE ANALYSIS OF THE HIGH CALIBER SHOWN IN  
THIS ARTICLE.

THE FOLLOWING ARTICLE IS TRANSLATED FOR THE BENEFIT OF OUR READERSHIP AND PRESENTED IN THE HOPE THAT MORE OF US WILL ENJOY THE OPEN GAMES ESPOUSED BY THE FLAMBOYANT CHESS MASTER F. MARSHALL. MORE PARTICULARLY, WE FERVENTLY HOPE THE ENCLOSED ANALYSIS WILL BRING NO LESS THAN 200 CHESS PLAYERS OUT TO THE NEXT CHESS TOURNAMENT. EACH OF OUR MEMBERS WOULD ENJOY AND BENEFIT BY SUCH A TURNOUT. AMERICAN CHESS WOULD BENEFIT BY SUCH A TURNOUT. SEE YOU AT THE NEXT TOURNAMENT.

### Theoretical Department

#### About the Marshall Attack

Y. NEYSTADT

S. Tartakover once wittily described Black's suffering in the Ruy Lopez as "the Spanish torture". Indeed, in the majority of variations Black is confronted with an uneasy struggle for equality.

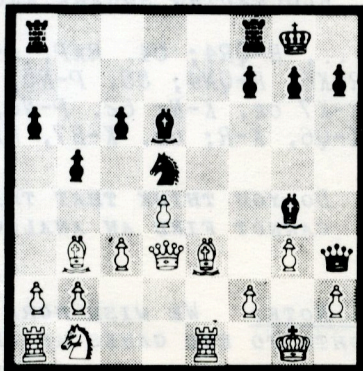
Is it possible to escape this slow positional torture? Doesn't it follow to strive to seize the initiative while still in the opening? And those, who in answer to 1. P-K4 prefer the symmetrical 1 ... P-K4, again and again return to the complicated attacking variations advanced by the great American chessplayer F. Marshall almost a half century ago.

The present article is concerned with one of the present-day branches of the Marshall attack, i.e. the variant 1. P-K4, P-K4; 2. N-KB3, N-QB3; 3. B-N5, P-QR3; 4. B-R4, N-B3; 5. O-O, B-K2; 6. R-K1, P-QN4; 7. B-N3, O-O; 8. P-B3, P-Q4; 9. PXP, NXP; 10. NXP, NxN; 11. RxN, P-QB3; 12. P-Q4, B-Q3; 13. R-K1, Q-R5; 14. P-N3, Q-R6; 15. B-K3, B-KN5; 16. Q-Q3.

All attempts in the old continuation with 11 ... N-B3; 12. P-Q4, B-Q3 to prove that Black's initiative is worth the sacrificed Pawn have not been crowned with success, and the variant examined here is justifiably considered the main line. (DIAGRAM)

Black has at his disposal two primary continuations, 16 ... P-KB4 and 16 ... QR-K1 followed by R-K3.  
I. 16 ... P-KB4; 17. P-KB4, QR-K1.

A direct 17 ... P-N4 doesn't work out. In the game Neystadt-Antosh (Postal Match, USSR-Czechoslovakia, 1960/61), after 18.Q-B1, Q-R4; 19. N-Q2, K-R1; 20. BxN, PxP; 21. PXP, P-B5; 22. BxP, BxB; 23. PxP, B-R6; 24. Q-K2, QxQ; 25. RxQ, RxP; 26. N-B1, R-N5ch;



27. N-N3, RxNP; 28. QR-K1. White repulsed the attack and realized his material advantage.

18. Q-B1, Q-R4; 19. N-Q2, K-R1; 20. BxN.

After the King's retreat the Knight is no longer pinned and White is obliged to take. But now the complex of white squares on the King's flank and in the center is weak.

20... PxB; 21. Q-N2.

In a game with Tal at the team championship of the nation in 1962, Boleslavsky continued with 21. P-QR4. In an article "Results of the XV Olympiad" (Chess Bulletin, No. 1, 1963), he expressed the opinion that White shouldn't play 21. Q-N2.

In the game Neystadt-Mekulyea (Postal Match, USSR-Czechoslovakia, 1961/62), where this move was made, Black continued with

21... R-K5.

The object of this sacrifice of the exchange is to "seal" the long white diagonal and to destroy an important defender of the King's flank. However, White is not obligated to take the Rock immediately.

22. P-QR4.

And this is not new. In the game Zagorovsky-Peterson (III World Postal Championship) after 22 ... P-N4; 23. PxP, P-B5; 24. NxR, PxN; 25. PxP, RxP; 26. BxR, BxB; 27. R-KB1, B-B6; 28. RxB, PxR; 29. Q-KB2, B-K6; 30. QxB, Q-N5ch; 31. K-B2, Q-N7ch; 32. K-K1, Q-R8ch; 33. K-Q2, QxR; 34. QxP, White was able to beat back the attack and win.

After this, the conclusion was drawn that the move 22. P-QR4 guaranteed White an advantage. However, in the above-mentioned article Boleslavsky showed that Black could get an irrisistible attack by playing 23 ... B-R6 instead of 23 ... P-B5, and on 24. Q-B3 follows 24... R-N5!

When the grandmaster was writing about the merits of the move 24 ... R-N5, it had already been made by the Czech chess-player. Moreover, after a few moves Black was shown not to be in a winning position, but in a hopeless one.

This is how it happened.

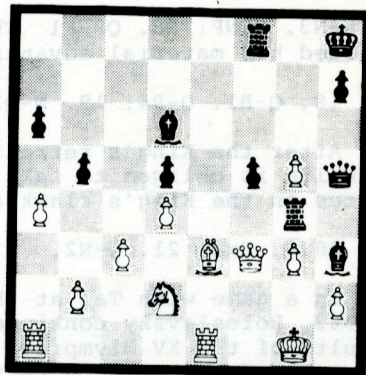
22 ... P-N4 23. BPxP, B-R6; 24. Q-B3, R-N5. (DIAGRAM)

It seems that White can do nothing against the threat of 25 ... P-B5. But the resources of the defense (or more exactly the counter-attack!) are not exhausted.

25. PxP!

Leaving his King-flank to the "mercy of Fate", White shifts his attention to the QRP.

25... P-B5 (if 25... PxP, then 26. R-R6) 26. BxP, RlxB.



It would be interesting to pursue events in the case of 26 ... BxB, on which I intended to reply with 27. PxP! Further could have followed:

A. 27 ... QxP; 28. P-R7, R-R1; 29. R-K8ch, RxR;  
30. P-R8/Q, RxQ; 31. RxRch, K-N2; 32. R-R7ch,  
and Black cannot escape perpetual check:  
If the King goes to R4 (32 ... K-R3; 33. R-R6ch,  
K-R4), then White plays 34. R-R5; to hide the King in  
the center by 32 ... K-B1 (B3); 33. R-R8ch (R6ch) K-K2;  
34. R-R7ch, K-Q3 is impossible in view of 35. Q-Q3 with  
the threat of 36. Q-R6mate or 34...K-Q1; 35. RxP.

B. 27 ... B-Q3; 28. QxRch.  
To a draw leads 28. P-R7, RxQ; 29. NxR, RxPch; 30. PxR,  
QxN; 31. P-R8/Qch, B-B1; 32. R-K2, QxPch; 33. K-R1,  
Q-B6ch; 34. K-R2, QxRch, and the White King cannot hide  
from the checks; the only square on which he might feel  
safe, QR3, is under attack.  
28 ... BxQ; 29. P-R7, QxP, and before White queens, he  
must defend KN3 with 30. N-B1. For example: 30...BxN;  
31. RxB, RxPch; 32. K-R1, and White should win.

27. QxP, Q-N3; 28. PxP! RxNP4; 29. P-R7!

White's counterplay is tied up with the impetuous march of the QRP.

29...RxPch.

All of Black's pieces are aimed at the White King. However, there is no conclusive continuation for the attack and the QRP only needs to make one more move, after which Black will be compelled to deal with two Queens.

30. K-R1! (a quiet move with the King in the face of all the enemy pieces) 30 ... R-N4 (if 30 ... B-N7ch, then 31 QxB2, RxQ;

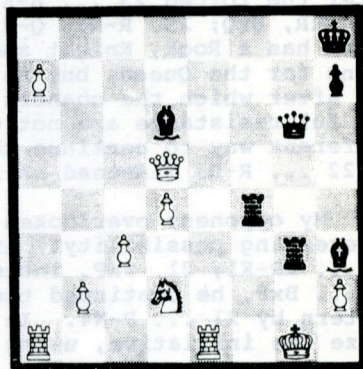
32. P-R8/Qch and 33. QxR) 31. P-R8/Qch, R-B1; 32. R-KN5 (in case of 32 ... RxQ4, the battle ends with 33. RxQ, and Black cannot take on QR1 because of the mate) 33. RxB, RxB; 34. Q-K5ch. Black resigned.

The question arises: Is it really impossible to do anything about the audacious QRP? (DIAGRAM)

Before rushing into an attack with 25 ... P-B5, Black should have set the enemy Pawn on a different path by playing 25 ... P-R4! Black retains the threat of P-B5 and the passed NP is not so dangerous now because the Bishop guards its queening square.

II. 16 ... QR-K1.

A different method of attack. Black intends to play R-K3 and then KR-K1 and P-KB4. Depending on circumstances, the Rook can be transferred to the King's flank.



17. N-Q2, R-K3; 18. BxN, PxB; 19. P-R4, P-B4.

As was shown in the game Tal-Krogeus (XXX USSR Championship), poor is 19 ... P-N5 in view of 20. Q-B1, Q-R4; 21. P-QB4, PxP; 22. QxP, P-N4; 23. P-Q5, with advantage to White.

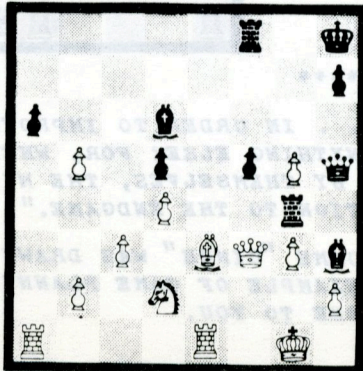
20. P-KB4.

This move, recommended in an article about the championship by I. Boleslavsky and A. Suetin (bulletin of the tournament) and by V. Mikenas (Chess Bulletin, No. 3, 1963), and met in the game Neystadt-Dintier (International Postal Tournament of Masters, 1962/63), could lead to grievous consequences.

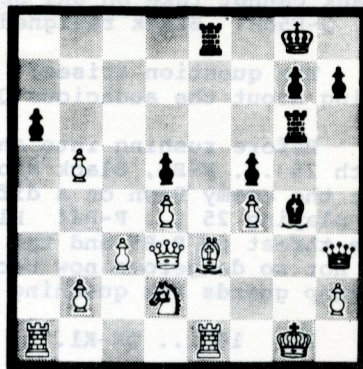
According to the analysis of Boleslavsky and Suetin, after 20 ... KR-K1; 21. PxP, BxP; 22. PxB, Black continuing with 22...RxB; 23. RxR, RxR; 24. Q-B1, PxP, secures equal chances.

Having mailed my opponent the move 20. P-KB4, I discovered with horror that instead of 22 ... RxB, Black can play 22. R-KN3.

(DIAGRAM)



The move 23. RxP is forced. After the forced 23 ... B-K7 dis ch; 24. RxR, BxQ; 25. R-N3, Q-R3, White has a Rook, Knight and two Pawns for the Queen, but he loses the NP, after which the chances for successful resistance are not great. A different way to continue the attack is 22 ... R-R3 (instead of 22 ... R-KN3).



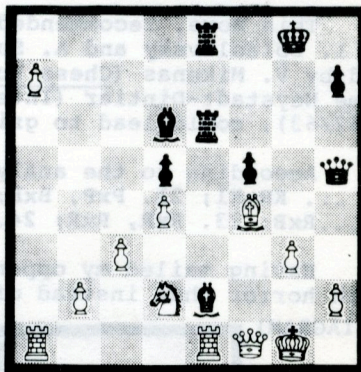
My opponent overlooked this interesting possibility. After 20 ... KR-K1; 21. PxP, instead of 21 ... BxP, he continued the attack according to the well-tried pattern by 21 ... P-N4. In this game too, White was able to seize the initiative, using the far-advanced QRP.

22. Q-B1, Q-R4.

On 22 ... RxB, I had planned 23. RxR, RxR; 24. QxQ, BxQ; 25. PxRP, and, despite the extra piece, Black cannot save himself.

23. PxRP, PxP; 24. BxP, B-K7; 25. P-R7! (DIAGRAM)

As in the preceding game, this brave Pawn decides the outcome of the battle. After 25 ... BxQ; 26. RxR, R-R1; 27. RxB6, B-R6 (on 27...B-Q6; 28. R-QN6, RxP; 29. R-N8ch! leads to victory) 28. R-KR6, Black is forced to part with the Bishop (28...Q-N5; 29. R-KR4). In case of 28 ... Q-B2; 29. RxB, RxP, White has a Rook, two minor pieces and two Pawns for the Queen: therefore, Black resigned.



\*\*\*\*\*

JOSE RAOUL CAPABLANCA: ". . . IN ORDER TO IMPROVE YOUR GAME YOU MUST STUDY THE ENDGAME BEFORE ANYTHING ELSE; FOR, WHEREAS THE ENDINGS CAN BE STUDIED AND MASTERED BY THEMSELVES, THE MIDDLEGAME AND THE OPENING MUST BE STUDIED IN RELATION TO THE ENDGAME."

WHEN WAS THE LAST TIME AN ENDGAME "CINCH" WAS DRAWN OR LOST BY YOU? THE FOREGOING STUDY IS AN EXAMPLE OF GAME PLANNING WHICH INCLUDES THE WHOLE GAME. GOOD FORTUNE TO YOU.



## SAN BRUNO OPEN AIR CHESS FESTIVAL !!

THE SAN BRUNO CHAMBER OF COMMERCE OF SAN BRUNO, CALIFORNIA, ANNOUNCE ITS FIRST ANNUAL OPEN AIR CHESS FESTIVAL. THIS HUGE EVENT WILL BE HELD TUESDAY, JULY 4TH, 1967 AT THE SAN BRUNO CITY PARK IN BECKNER FIELD. ACTIVITIES START AT 10:00 AM AND CONTINUE UNTIL 6:00 PM. GEORGE KOLTANOWSKI, INTERNATIONAL CHESS MASTER, WILL DIRECT. UNUSUALLY HIGH INTEREST IN THE EVENT HAS PROMPTED EARLY COMMITMENTS OF A WIDE COVERAGE BY NEWSPAPERS, RADIO, AND TELEVISION. CHESS IN ACTION GIVES AN UNQUALIFIED RECOMMENDATION FOR YOUR EARLY ENTRY.

THE SCHEDULE OF EVENTS APPEALS TO EVERY TASTE IN CHESS:

1. MAIN FEATURE WILL BE A TOURNAMENT CONSISTING OF GROUPS OF FOUR PLAYERS WHO SHALL PLAY THREE GAMES EACH. THE WINNER OF EACH GROUP WILL RECEIVE A PLAQUE.
2. THERE ARE SECTIONS FOR E, A, B, C, D, UNRATED, BEGINNERS, WOMEN, AND JUNIORS (14 YEARS OR LESS).
3. IN ADDITION TO THE PLAQUES AWARDED THERE WILL BE TROPHIES FOR FIRST AND RUNNER-UP POSITIONS OF EACH SECTION.
4. SPECIAL TROPHIES FOR PLAYERS COMING THE FURTHEST DISTANCE; FOR CLUBS WITH GOOD REPRESENTATION; AND SURPRISE PRIZES GALORE.
5. A NUMBER OF SIMULTANEOUS EXHIBITIONS WILL BE GIVEN BY LEADING MASTERS.
6. A SPECIAL SOLVING COMPETITION WILL BE HELD.

ENTRY FEE ON OR BEFORE JUNE 15TH, 1967 IS \$2.00, AFTER JUNE 15TH THE ENTRY FEE IS \$3.00.

ADDITIONAL INFORMATION AND THE FULL PARTICULARS MAY BE OBTAINED FROM DICK KING, MANAGER, SAN BRUNO CHAMBER OF COMMERCE, 502 SAN MATEO AVENUE, SAN BRUNO, CALIFORNIA.

AMPLE SPACE PROVIDES FOR PICNIC, FROLIC, AND FUN FOR ALL YOUR FAMILY AND FRIENDS. SIGN UP EARLY AND ENJOY A MOST PLEASANT DAY!

WALNUT CREEK FOURTH ANNUAL  
 SPRING OPEN CHESS TOURNAMENT

DATE APRIL 22 & 23, 1967, SATURDAY & SUNDAY  
 PLACE WALNUT CREEK RECREATION CENTER  
 CIVIC DRIVE, WALNUT CREEK  
 ELIGIBILITY OPEN TO ALL CHESS PLAYERS WHO ARE, OR  
 WHO WILL BECOME, MEMBERS OF CHESS FRIENDS  
 OF NORTHERN CALIFORNIA.

PRIZES EXPERT/A DIVISION: 1ST ... \$15 + TROPHY  
 2D & 3D ... TROPHIES  
 4TH & 5TH ... MEDALLIONS  
 "B" DIVISION: 1ST ... \$10 + TROPHY  
 2ND & 3RD ... TROPHIES  
 4TH & 5TH ... MEDALLION.  
 "C" DIVISION 1ST ... \$5 + TROPHY  
 2D & 3D ... TROPHIES  
 4TH & 5TH ... MEDALLIONS

NOTE: CASH PRIZES SUBJECT TO INCREASE IF ENTRY  
 RECEIPTS WARRANT.

ENTRY FEE \$4.00 FOR MEMBERS OF C.F.N.C.  
 \$7.00 FOR NON-MEMBERS.

PROGRAM REGISTRATION FROM 10:00A TO 12:00, 4/22/67  
 FIVE ROUND SWISS:

|    |   |                    |          |       |      |
|----|---|--------------------|----------|-------|------|
| Rd | 1 | SATURDAY, APRIL 22 | BEGIN AT | 12:00 | NOON |
| Rd | 2 | " " " "            | " "      | 3:30  | P    |
| Rd | 3 | SUNDAY, APRIL 23   | " "      | 9:00  | A    |
| Rd | 4 | " " " "            | " "      | 12:30 |      |
| Rd | 5 | " " " "            | " "      | 4:00  |      |

BRING CLOCKS AND SETS IF AVAILABLE

---

TO: BOB JACOB, TREASURER, WALNUT CREEK CHESS CLUB  
 P. O. BOX 391, WALNUT CREEK, CALIFORNIA

ENTER ME IN THE WALNUT CREEK OPEN CHESS TOURNAMENT:

NAME \_\_\_\_\_ PHONE \_\_\_\_\_

ADDRESS \_\_\_\_\_ CITY \_\_\_\_\_ ZIP \_\_\_\_\_

I AM A CLASS \_\_\_\_\_ PLAYER.... I AM AN UNRATED PLAYER \_\_\_\_\_

The 1967 CFNC Championship Tournament was held at the Berkeley YMCA on the weekend of 21/22 January. Congratulations to N. Weaver, Berkeley, for winning the Master/Expert/A division, to D. Lynn, Saratoga, for winning the B division, and to J. Weiler, Walnut Creek, for winning the C division. As overall winner of the tournament, N. Weaver has qualified to play in the 1967 California State Chess Championship Tournament to be held in Los Angeles next December.

The round-by-round results (with IRS rating changes) are presented in the following tables:

| Class A<br>PLAYER | START<br>RATING | ROUND 1  | ROUND 2  | ROUND 3  | ROUND 4  | ROUND 5  | SCORE         |
|-------------------|-----------------|----------|----------|----------|----------|----------|---------------|
| 1. N. WEAVER      | 2300            | W16 2304 | W13 2306 | W4 2313  | D8 2305  | W3 2314  | 4 1/2 - 1/2   |
| 2. R. LAVER       | 2140            | W19 2146 | D9 2138  | W24 2146 | W18 2165 | W8 2179  | 4 1/2 - 1/2   |
| 3. Z. VYBIRAL     | 2100            | W37 2107 | W12 2114 | W15 2118 | W5 2139  | L1 2130  | 4-1           |
| 4. S. SLOAN       | 2067            | W24 2077 | W25 2085 | L1 2078  | W23 2087 | W11 2099 | 4-1           |
| 5. E. OSBUN       | 2240            | W22 2242 | W41 2246 | W23 2248 | L3 2227  | W13 2235 | 4-1           |
| 6. P. GREY        | 1987            | W28 1997 | L23 1977 | W12 1989 | W27 2015 | W15 2024 | 4-1           |
| 7. A. LEE         | 2014            | W39 2021 | L31 1996 | W25 2007 | W30 2024 | W14 2038 | 4-1           |
| 8. G. BUDOWSKI    | 2100            | W36 2107 | W26 2112 | W31 2117 | D1 2125  | L2 2111  | 3 1/2 - 1 1/2 |
| 9. J. SMAIL       | 1946            | W42 1953 | D2 1961  | L14 1945 | W20 1955 | W18 1981 | 3 1/2 - 1 1/2 |
| 10. J. ULRICH     | 1991            | W20 1998 | W27 2025 | D18 2033 | L11 2014 | W23 2029 | 3 1/2 - 1 1/2 |
| 11. M. QUINLAN    | 1950            | W17 1960 | L18 1955 | W26 1966 | W10 1985 | L4 1973  | 3-2           |
| 12. R. CUNEO      | 1871            | W21 1894 | L3 1887  | L6 1875  | W29 1888 | W25 1905 | 3-2           |
| 13. J. HURT       | 1954            | W29 1964 | L1 1962  | W32 1966 | W21 1985 | L5 1979  | 3-2           |
| 14. D. FORTHOFFER | 1963            | L25 1943 | W40 1953 | W9 1969  | W19 1982 | L7 1968  | 3-2           |
| 15. K. YAMAMOTO   | 1784            | W43 1806 | W34 1821 | L3 1817  | W16 1841 | L6 1832  | 3-2           |
| 16. K. GRIVANIS   | 1994            | L1 1990  | W28 2000 | W36 2001 | L15 1987 | W24 2001 | 3-2           |
| 17. G. FRENCH     | 1804            | L11 1794 | L24 1783 | W37 1802 | W36 1821 | W26 1838 | 3-2           |
| 18. A. WANG       | 2227            | W33 2232 | W11 2237 | D10 2229 | L2 2210  | L9 2185  | 2 1/2 - 2 1/2 |
| 19. T. BROWN      | 1900            | L2 1894  | D20 1889 | W34 1900 | L14 1887 | W35 1901 | 2 1/2 - 2 1/2 |
| 20. L. HUGHES     | 1775            | L10 1768 | D19 1773 | W35 1792 | L9 1782  | W38 1802 | 2 1/2 - 2 1/2 |
| 21. J. JAFFRAY    | 2050            | L12 2027 | W37 2037 | W41 2049 | L13 2030 | D22 2026 | 2 1/2 - 2 1/2 |
| 22. L. CIZINSKY   | 1900            | L5 1898  | W39 1910 | L27 1907 | W28 1920 | D21 1924 | 2 1/2 - 2 1/2 |
| 23. R. BAKER      | 1866            | W30 1888 | W6 1908  | L5 1906  | L4 1897  | L10 1882 | 2-3           |
| 24. L. JACOBSEN   | 1929            | L4 1919  | W17 1930 | L2 1922  | W40 1933 | L16 1919 | 2-3           |
| 25. G. WEBER      | 1854            | W14 1874 | L4 1866  | L7 1855  | W32 1863 | L12 1848 | 2-3           |
| 26. M. WATSON     | 1828            | W32 1837 | L8 1832  | L11 1821 | W38 1840 | L17 1823 | 2-3           |
| 27. Z. BAROUDI    | 2272            | W38 2274 | L10 2247 | W22 2250 | L6 2224  | F 2224   | 2-3           |
| 28. D. HARDY      | 1840            | L6 1830  | L16 1820 | W39 1834 | L22 1821 | W36 1838 | 2-3           |
| 29. D. HOEKMAN    | 1814            | L13 1804 | L36 1791 | W33 1811 | L12 1798 | W40 1814 | 2-3           |
| 30. B. CARTER     | 2020            | L23 1998 | W33 2010 | W38 2022 | L7 2005  | F 2005   | 2-3           |
| 31. G. WREN       | 1800            | B 1800   | W7 1825  | L8 1820  | F 1820   | F 1820   | 2-3           |
| 32. P. BROWN      | 1653            | L26 1644 | W42 1662 | L13 1658 | L25 1659 | D33 1659 | 1 1/2 - 3 1/2 |
| 33. M. PERRY      | 1900            | L18 1895 | L30 1883 | L29 1863 | W42 1871 | D32 1862 | 1 1/2 - 3 1/2 |
| 34. J. LASICH     | 1776            | D35 1779 | L15 1764 | L19 1753 | W37 1773 | F 1773   | 1 1/2 - 3 1/2 |
| 35. J. MECORNEY   | 1860            | D34 1857 | L38 1842 | L20 1823 | W39 1837 | L19 1823 | 1 1/2 - 3 1/2 |
| 36. L. BROWN      | 1874            | L8 1867  | W29 1880 | L16 1869 | L17 1850 | L28 1833 | 1-4           |
| 37. R. MCCOLLOUGH | 1877            | L3 1870  | L21 1860 | L17 1841 | L34 1821 | W42 1831 | 1-4           |
| 38. L. POST       | 1890            | L27 1888 | W35 1903 | L30 1891 | L26 1872 | L20 1852 | 1-4           |
| 39. R. FORSYTH    | 1794            | L7 1787  | L22 1775 | L28 1761 | L35 1747 | B 1747   | 1-4           |
| 40. J. EVANS      | 1817            | L4 1805  | L14 1795 | W42 1807 | L24 1796 | L29 1780 | 1-4           |
| 41. R. TRENBERTH  | 1921            | W40 1933 | L5 1929  | L21 1917 | F 1917   | F 1917   | 1-4           |
| 42. J. CORNWELL   | 1712            | L9 1705  | L32 1687 | L40 1675 | L33 1667 | L37 1657 | 0-5           |
| 43. M. GOODALL    | 1946            | L15 1924 | F 1924   | F 1924   | F 1924   | F 1924   | 0-5           |

| CLASS B<br>PLAYER | START<br>RATING | ROUND 1  | ROUND 2  | ROUND 3  | ROUND 4  | ROUND 5  | SCORE     |
|-------------------|-----------------|----------|----------|----------|----------|----------|-----------|
| 1. D. LYNN        | 1744            | W23 1756 | W29 1767 | W25 1782 | W4 1797  | W14 1813 | 5-0       |
| 2. W. THOMAS      | 1700            | W16 1720 | W31 1732 | W15 1749 | W5 1766  | D3 1764  | 4 1/2-1/2 |
| 3. H. POSCHMANN   | 1635            | W20 1655 | W11 1675 | W9 1694  | W8 1714  | D2 1716  | 4 1/2-1/2 |
| 4. P. NIELSEN     | 1707            | W34 1719 | W7 1737  | W14 1755 | L1 1740  | W10 1757 | 4-1       |
| 5. D. AMKRAUT     | 1744            | W12 1757 | W10 1773 | W30 1785 | L2 1768  | W9 1785  | 4-1       |
| 6. L. WAIT        | 1792            | L13 1772 | W40 1783 | W12 1794 | W26 1804 | W15 1818 | 4-1       |
| 7. F. HAMAKER     | 1768            | W40 1780 | L4 1762  | W36 1773 | W27 1780 | W19 1794 | 4-1       |
| 8. J. ROBERTS     | 1781            | W28 1793 | W13 1805 | D19 1802 | L3 1782  | W21 1793 | 3 1/2-1/2 |
| 9. D. BETANCO     | 1738            | W32 1750 | W17 1762 | L3 1743  | W19 1759 | L5 1743  | 3-2       |
| 10. J. MATHIS     | 1740            | W39 1752 | L5 1736  | W18 1747 | W11 1763 | L4 1746  | 3-2       |
| 11. V. FONG       | 1750            | W29 1762 | L3 1742  | W17 1754 | L10 1758 | W26 1750 | 3-2       |
| 12. E. PHILLIPS   | 1649            | L5 1636  | W37 1654 | L6 1643  | W22 1660 | W20 1679 | 3-2       |
| 13. M. WEBER      | 1695            | W6 1715  | L8 1703  | W31 1716 | L20 1700 | W25 1716 | 3-2       |
| 14. N. REIDER     | 1774            | W35 1786 | W36 1797 | L4 1779  | W25 1793 | L1 1777  | 3-2       |
| 15. J. LONG       | 1753            | B 1753   | W26 1764 | L2 1747  | W30 1759 | L6 1745  | 3-2       |
| 16. T. MAKENS     | 1799            | L2 1779  | D24 1774 | D21 1768 | W36 1778 | W28 1790 | 3-2       |
| 17. A. SCHULZ     | 1634            | W42 1653 | L9 1641  | L11 1629 | W37 1647 | W32 1663 | 3-2       |
| 18. B. MCGEE      | 1612            | W38 1632 | L25 1620 | L10 1609 | W39 1626 | W27 1641 | 3-2       |
| 19. N. WILD       | 1712            | W21 1724 | W23 1737 | D8 1740  | L9 1724  | L7 1710  | 2 1/2-2/2 |
| 20. R. ROUBAL     | 1726            | L3 1706  | D22 1703 | W41 1717 | W13 1733 | L12 1714 | 2 1/2-2/2 |
| 21. J. FOSAAEN    | 1616            | L19 1604 | W41 1623 | D16 1629 | W33 1649 | L8 1638  | 2 1/2-2/2 |
| 22. G. THOMPSON   | 1650            | L33 1637 | D20 1640 | W24 1656 | L12 1639 | B 1639   | 2 1/2-2/2 |
| 23. R. SCHNEIDER  | 1651            | L1 1639  | L19 1626 | D35 1626 | B 1626   | W33 1645 | 2 1/2-2/2 |
| 24. D. BELTRAM    | 1661            | L30 1645 | D16 1650 | L22 1634 | W38 1652 | W34 1666 | 2 1/2-2/2 |
| 25. R. GRIBBLE    | 1712            | W27 1723 | W18 1735 | L1 1720  | L14 1706 | L13 1690 | 2-3       |
| 26. P. MOSER      | 1612            | W37 1632 | L15 1621 | W28 1640 | L6 1630  | L11 1618 | 2-3       |
| 27. D. CAMPBELL   | 1585            | L25 1572 | W35 1591 | W32 1610 | L7 1603  | L18 1588 | 2-3       |
| 28. G. ROY        | 1683            | L8 1671  | W39 1686 | L26 1667 | W31 1681 | L16 1669 | 2-3       |
| 29. A. GULLMES    | 1655            | L11 1643 | L1 1632  | L38 1617 | W35 1634 | W36 1649 | 2-3       |
| 30. E. MUGNANI    | 1631            | W24 1647 | W33 1667 | L5 1655  | L15 1643 | F 1643   | 2-3       |
| 31. R. HARPER     | 1610            | W41 1630 | L2 1618  | L13 1605 | L28 1591 | W39 1608 | 2-3       |
| 32. L. NORDELL    | 1650            | L9 1638  | W42 1656 | L27 1637 | W34 1652 | L17 1636 | 2-3       |
| 33. E. DEVORE     | 1728            | W22 1741 | L30 1721 | D34 1717 | L21 1697 | L23 1678 | 1 1/2-3/2 |
| 34. R. CASTRO     | 1612            | L4 1600  | W38 1619 | D33 1623 | L32 1608 | L24 1594 | 1 1/2-2/2 |
| 35. D. HARRIS     | 1668            | L14 1656 | L27 1637 | D23 1637 | L29 1620 | W38 1638 | 1 1/2-3/2 |
| 36. C. STEWART    | 1630            | B 1650   | L14 1639 | L7 1628  | L16 1618 | L29 1603 | 1-4       |
| 37. H. HOOK       | 1712            | L26 1692 | L12 1674 | B 1674   | L17 1656 | F 1656   | 1-4       |
| 38. R. LAMON      | 1700            | L18 1680 | L34 1661 | W29 1676 | L24 1658 | L35 1640 | 1-4       |
| 39. R. CHINN      | 1650            | L10 1638 | L28 1623 | B 1623   | L18 1606 | L31 1589 | 1-4       |
| 40. J. BUSH       | 1656            | L7 1644  | L6 1633  | F 1633   | F 1633   | F 1633   | 0-5       |
| 41. H. MAEGER     | 1700            | L31 1680 | L21 1661 | L20 1647 | F 1647   | F 1647   | 0-5       |
| 42. P. VAYSSIE    | 1718            | L17 1699 | L32 1681 | F 1681   | F 1681   | F 1681   | 0-5       |

| CLASS C<br>PLAYER |               | START<br>RATING | ROUND 1  | ROUND 2  | ROUND 3  | ROUND 4  | ROUND 5  | SCORE            |
|-------------------|---------------|-----------------|----------|----------|----------|----------|----------|------------------|
| 1.                | J. WEILER     | 1587            | W19 1602 | W21 1612 | W24 1627 | W11 1642 | W4 1658  | 5-0              |
| 2.                | L. TROTTIER   | 1566            | W14 1579 | W9 1592  | W16 1607 | W6 1623  | L3 1606  | 4-1              |
| 3.                | R. YARANON    | 1550            | W7 1565  | W25 1577 | W20 1592 | L4 1577  | W2 1595  | 4-1              |
| 4.                | A. EICHE      | 1574            | W12 1589 | W26 1601 | W27 1616 | W3 1631  | L1 1615  | 4-1              |
| 5.                | D. LONIE      | 1550            | W33 1563 | W10 1578 | L6 1563  | W17 1579 | W15 1597 | 4-1              |
| 6.                | C. ISBERG     | 1569            | W37 1584 | W23 1596 | W5 1611  | L2 1595  | W12 1610 | 4-1              |
| 7.                | E. IPSEN      | 1529            | L3 1514  | W30 1531 | W26 1545 | W24 1561 | W18 1575 | 4-1              |
| 8.                | K. NAIL       | 1539            | L24 1523 | W40 1539 | W36 1550 | W25 1563 | W11 1580 | 4-1              |
| 9.                | J. DENNIS     | 1493            | D20 1495 | L2 1482  | W32 1500 | W22 1518 | W29 1534 | 3 1/2 -<br>1 1/2 |
| 10.               | J. JOHNSON    | 1550            | B 1550   | L5 1535  | D21 1531 | W23 1545 | W20 1562 | 3 1/2 -<br>1 1/2 |
| 11.               | A. BOYD       | 1550            | W29 1566 | W13 1580 | W15 1598 | L1 1583  | L8 1566  | 3-2              |
| 12.               | C. BARTON     | 1550            | L4 1535  | W41 1550 | W14 1564 | W13 1578 | L6 1563  | 3-2              |
| 13.               | W. AMBERSTONE | 1494            | W22 1512 | L11 1498 | W28 1517 | L12 1503 | W24 1521 | 3-2              |
| 14.               | J. POWELL     | 1500            | L2 1487  | W33 1502 | L12 1488 | W30 1506 | W28 1525 | 3-2              |
| 15.               | J. FRIEDMAN   | 1593            | W34 1607 | W28 1622 | L11 1604 | W27 1618 | L5 1600  | 3-2              |
| 16.               | A. CLARREN    | 1550            | W32 1565 | W35 1577 | L2 1562  | L18 1543 | W25 1556 | 3-2              |
| 17.               | C. MURRAY     | 1550            | L21 1529 | W29 1554 | L35 1556 | L5 1540  | W26 1554 | 3-2              |
| 18.               | S. HIBBARD    | 1497            | W36 1509 | L27 1495 | F 1495   | W16 1514 | L7 1500  | 3-2              |
| 19.               | A. SCHUMACHER | 1550            | L1 1535  | L22 1519 | F 1519   | W2 1531  | W27 1548 | 3-2              |
| 20.               | P. LEKAS      | 1550            | D9 1548  | W34 1564 | L3 1549  | W21 1561 | L10 1544 | 2 1/2 -<br>2 1/2 |
| 21.               | C. GRUENWALD  | 1432            | W17 1453 | L1 1443  | D10 1447 | L20 1435 | W35 1450 | 2 1/2 -<br>2 1/2 |
| 22.               | W. LANG       | 1550            | L13 1532 | W19 1548 | D23 1545 | L9 1527  | W33 1541 | 2 1/2 -<br>2 1/2 |
| 23.               | J. WARNER     | 1476            | W31 1495 | L6 1483  | D22 1486 | L10 1472 | W34 1490 | 2 1/2 -<br>2 1/2 |
| 24.               | J. CULP       | 1550            | W8 1566  | W38 1582 | L1 1567  | L7 1551  | L13 1533 | 2-3              |
| 25.               | R. UOMINI     | 1469            | W30 1476 | L3 1464  | W31 1483 | L8 1470  | L16 1470 | 2-3              |
| 26.               | F. BENT       | 1479            | W40 1498 | L4 1486  | L7 1472  | W31 1490 | L17 1476 | 2-3              |
| 27.               | N. EVANS      | 1550            | W41 1565 | W18 1579 | L4 1564  | L15 1550 | L19 1533 | 2-3              |
| 28.               | J. McCARLEY   | 1594            | B 1594   | L15 1579 | L13 1560 | W32 1574 | L14 1555 | 2-3              |
| 29.               | H. RADKE      | 1550            | L11 1534 | L17 1518 | F 1518   | W36 1529 | L9 1513  | 2-3              |
| 30.               | B. SMITH      | 1550            | L25 1530 | L7 1513  | W39 1529 | L14 1511 | W36 1522 | 2-3              |
| 31.               | J. CUTBURTH   | 1550            | L23 1531 | W37 1547 | L25 1528 | L26 1510 | W39 1525 | 2-3              |
| 32.               | E. SILVA      | 1518            | L16 1503 | W39 1520 | L9 1502  | L28 1488 | W37 1505 | 2-3              |
| 33.               | D. MEADOR     | 1474            | L5 1461  | L14 1446 | W37 1465 | D34 1467 | L22 1453 | 1 1/2 -<br>3 1/2 |
| 34.               | B. LAMON      | 1550            | L15 1536 | L20 1516 | F 1516   | D33 1514 | L23 1496 | 1 1/2 -<br>3 1/2 |
| 35.               | M. BLOCK      | 1432            | W42 1453 | L16 1441 | L17 1429 | L19 1417 | L21 1402 | 1-4              |
| 36.               | S. SMITH      | 1394            | L18 1382 | W42 1404 | L8 1393  | L29 1382 | L30 1371 | 1-4              |
| 37.               | B. HARTWELL   | 1550            | L6 1535  | L31 1519 | L33 1500 | W39 1516 | L32 1499 | 1-4              |
| 38.               | T. ROSS       | 1550            | W39 1566 | L24 1550 | F 1550   | F 1550   | F 1550   | 1-4              |
| 39.               | E. BENT       | 1550            | L38 1534 | L32 1517 | L30 1501 | L37 1485 | L31 1470 | 0-5              |
| 40.               | C. BEEM       | 1550            | L26 1531 | L8 1515  | F 1515   | F 1515   | F 1515   | 0-5              |
| 41.               | P. BEEM       | 1530            | L27 1515 | L12 1500 | F 1500   | F 1500   | F 1500   | 0-5              |
| 42.               | R. MALMSTROM  | 1550            | L35 1529 | L36 1507 | F 1507   | F 1507   | F 1507   | 0-5              |

The 1967 Concord Open Chess Tournament was held in Concord on February 18 and 19, 1967. Congratulations to R. Shorman, R. Schnieder, and R. Yaranon for winning the E/A, B, and C divisions, respectively. Round by round results and consequent rating changes are presented below:

|             |                | START  | ROUND 1 |      | ROUND 2 |      | ROUND 3 |      | ROUND 4 |      | ROUND 5 |      | SCORE |
|-------------|----------------|--------|---------|------|---------|------|---------|------|---------|------|---------|------|-------|
| CLASS "E/A" |                | RATING |         |      |         |      |         |      |         |      |         |      |       |
| 1.          | R. SHORMAN     | 1950   | W11     | 1958 | D4      | 1961 | W10     | 1973 | W2      | 1991 | W7      | 2002 | 4*-1* |
| 2.          | K. GRIVAINIS   | 2001   | W5      | 2010 | W6      | 2019 | W3      | 2035 | L1      | 2017 | W9      | 2027 | 4 - 1 |
| 3.          | J. SMAIL       | 2007   | W7      | 2016 | W16     | 2024 | L2      | 2008 | W6      | 2017 | W4      | 2034 | 4 - 1 |
| 4.          | J. ULRICH      | 2026   | W12     | 2034 | D1      | 2031 | W9      | 2040 | W5      | 2049 | L3      | 2032 | 3*-1* |
| 5.          | R. MCCOLLOUGH  | 1831   | L2      | 1822 | W8      | 1840 | W14     | 1849 | L4      | 1840 | W10     | 1855 | 3 - 2 |
| 6.          | L. WAIT        | 1813   | W15     | 1833 | L2      | 1824 | W13     | 1844 | L3      | 1835 | W11     | 1847 | 3 - 2 |
| 7.          | K. YAMAMOTO    | 1832   | L3      | 1823 | W15     | 1841 | W16     | 1856 | W11     | 1868 | L1      | 1857 | 3 - 2 |
| 8.          | J. BARLOW      | 1901   | L10     | 1881 | L5      | 1863 | W15     | 1879 | W16     | 1892 | W12     | 1906 | 3 - 2 |
| 9.          | J. MECORNEY    | 1823   | D13     | 1828 | W12     | 1844 | L4      | 1835 | W10     | 1851 | L2      | 1841 | 2*-2* |
| 10.         | J. ROBERTS     | 1810   | W8      | 1830 | W17     | 1846 | L1      | 1834 | L9      | 1818 | L5      | 1803 | 2 - 3 |
| 11.         | E. BARTHOLOMEW | 1750   | L1      | 1742 | B       | 1742 | W17     | 1761 | L7      | 1749 | L6      | 1737 | 2 - 3 |
| 12.         | G. FRENCH      | 1838   | L4      | 1830 | L9      | 1814 | B       | 1814 | W13     | 1834 | L8      | 1820 | 2 - 3 |
| 13.         | A. MCKENZIE    | 1940   | D9      | 1935 | D14     | 1924 | L6      | 1904 | L12     | 1884 | B       | 1884 | 2 - 3 |
| 14.         | P. BROWN       | 1648   | D17     | 1656 | D13     | 1667 | L5      | 1658 | D15     | 1666 | D16     | 1671 | 2 - 3 |
| 15.         | R. CUNEO       | 1903   | L6      | 1883 | L7      | 1865 | L8      | 1849 | D14     | 1841 | W17     | 1856 | 1*-3* |
| 16.         | C. MCGINLEY    | 1822   | B       | 1822 | L3      | 1814 | L7      | 1799 | L8      | 1786 | D14     | 1781 | 1*-3* |
| 17.         | D. HOEKMAN     | 1848   | D14     | 1840 | L10     | 1824 | L11     | 1805 | B       | 1805 | L15     | 1790 | 1*-3* |

## CLASS "B"

|     |              |      |     |      |     |      |     |      |     |      |     |      |       |
|-----|--------------|------|-----|------|-----|------|-----|------|-----|------|-----|------|-------|
| 1.  | R. SCHNIEDER | 1645 | W9  | 1666 | W5  | 1682 | W10 | 1690 | W4  | 1718 | L2  | 1702 | 4 - 1 |
| 2.  | D. CLAPP     | 1685 | W8  | 1699 | L7  | 1682 | W12 | 1696 | W14 | 1711 | W1  | 1727 | 4 - 1 |
| 3.  | DR. J. MALIG | 1671 | W21 | 1685 | L4  | 1672 | W8  | 1686 | W16 | 1699 | W7  | 1715 | 4 - 1 |
| 4.  | D. BETANCO   | 1760 | W14 | 1771 | W3  | 1784 | W7  | 1796 | L1  | 1776 | D6  | 1772 | 3*-1* |
| 5.  | R. QUINTERO  | 1676 | D11 | 1674 | L1  | 1658 | W17 | 1673 | W15 | 1690 | W10 | 1705 | 3*-1* |
| 6.  | R. BENTSON   | 1650 | D20 | 1650 | W18 | 1665 | W11 | 1680 | D10 | 1680 | D4  | 1684 | 3*-1* |
| 7.  | B. NACE      | 1650 | W13 | 1664 | W2  | 1681 | L4  | 1669 | W9  | 1689 | L3  | 1673 | 3 - 2 |
| 8.  | J. BUSH      | 1633 | L2  | 1619 | W13 | 1634 | L3  | 1620 | W18 | 1635 | W11 | 1652 | 3 - 2 |
| 9.  | J. EVANS     | 1776 | L1  | 1755 | W17 | 1767 | W20 | 1779 | L7  | 1759 | W14 | 1770 | 3 - 2 |
| 10. | J. WEILER    | 1660 | W22 | 1674 | W15 | 1692 | L1  | 1676 | D6  | 1676 | L5  | 1661 | 2*-2* |
| 11. | F. OLVERA    | 1628 | D5  | 1630 | W19 | 1648 | L6  | 1633 | W20 | 1649 | L8  | 1632 | 2*-2* |
| 12. | G. GARCIA    | 1638 | L15 | 1625 | W21 | 1640 | L2  | 1626 | D13 | 1625 | W16 | 1640 | 2*-2* |
| 13. | L. TROTTIER  | 1605 | L7  | 1591 | L8  | 1576 | W21 | 1592 | D12 | 1593 | W17 | 1611 | 2*-2* |
| 14. | J. FOSAAEN   | 1638 | L4  | 1627 | W22 | 1642 | W15 | 1660 | L2  | 1645 | L9  | 1634 | 2 - 3 |
| 15. | BOB CLIPSON  | 1709 | W12 | 1722 | L10 | 1704 | L14 | 1686 | L5  | 1669 | W21 | 1680 | 2 - 3 |
| 16. | C. ISBERG    | 1597 | D17 | 1599 | D20 | 1601 | W19 | 1619 | L3  | 1606 | L12 | 1591 | 2 - 3 |
| 17. | A. GULLMES   | 1649 | D16 | 1647 | L9  | 1635 | L5  | 1620 | W19 | 1637 | L13 | 1619 | 1*-3* |
| 18. | A. EICHE     | 1615 | D19 | 1617 | L6  | 1602 | L22 | 1585 | L8  | 1570 | B   | 1570 | 1*-3* |
| 19. | W. ZIMMERMAN | 1673 | D18 | 1671 | L11 | 1653 | L16 | 1635 | L17 | 1618 | W20 | 1634 | 1*-3* |
| 20. | J. CORNWELL  | 1657 | D6  | 1657 | D16 | 1655 | L9  | 1643 | L11 | 1627 | L19 | 1611 | 1 - 4 |
| 21. | K. NAIL      | 1610 | L3  | 1596 | L12 | 1581 | L13 | 1565 | B   | 1565 | L15 | 1554 | 1 - 4 |
| 22. | R. OYLER     | 1610 | L10 | 1596 | L14 | 1581 | W18 | 1598 | F   | 1598 | F   | 1598 | 1 - 4 |

## CLASS "C"

|     |              |      |     |      |     |      |     |      |     |      |     |      |       |
|-----|--------------|------|-----|------|-----|------|-----|------|-----|------|-----|------|-------|
| 1.  | R. YARANON   | 1599 | W2  | 1612 | W3  | 1627 | W4  | 1640 | W5  | 1653 | W6  | 1663 | 5 - 0 |
| 2.  | B. JACOB     | 1525 | L1  | 1512 | W8  | 1527 | W7  | 1540 | W3  | 1558 | D4  | 1558 | 3*-1* |
| 3.  | BILL CLIPSON | 1575 | W8  | 1588 | L1  | 1573 | W6  | 1587 | L2  | 1569 | W5  | 1584 | 3 - 2 |
| 4.  | W. RICHARDS  | 1535 | W7  | 1548 | D11 | 1550 | L1  | 1537 | W9  | 1550 | D2  | 1550 | 3 - 2 |
| 5.  | R. SEGURA    | 1550 | D10 | 1547 | W9  | 1559 | B   | 1559 | L1  | 1546 | L3  | 1531 | 2*-2* |
| 6.  | D. GLANVILLE | 1510 | L11 | 1497 | W10 | 1513 | L3  | 1499 | W7  | 1512 | L1  | 1502 | 2 - 3 |
| 7.  | M. BURNS     | 1459 | L4  | 1446 | B   | 1446 | L2  | 1433 | L6  | 1420 | W10 | 1438 | 2 - 3 |
| 8.  | S. HIBBARD   | 1499 | L3  | 1486 | L2  | 1471 | B   | 1471 | L10 | 1454 | W9  | 1470 | 2 - 3 |
| 9.  | J. DORFMAN   | 1454 | B   | 1454 | W5  | 1442 | W10 | 1459 | L4  | 1446 | L8  | 1430 | 2 - 3 |
| 10. | S. BASS      | 1482 | D5  | 1485 | L6  | 1469 | L9  | 1452 | W8  | 1469 | L7  | 1451 | 1*-3* |
| 11. | A. McCALLEN  | 1590 | W6  | 1603 | D4  | 1601 | F   | 1601 | F   | 1601 | F   | 1601 | 1*-3* |

1967 PENINSULA OPEN CHESS CHAMPIONSHIP TOURNAMENT

**TOURNAMENT DIRECTOR:** George Koltanowski (International Chess Master). The decision of the Tournament Director will be final in all matters.

**SPONSORED BY:** Lockheed Employees Recreation Association (LERA) Chess Club.

**PLACE:** Main auditorium of the Lockheed Employee's Recreation Association (LERA) located at the north end of Mathilda Avenue (opposite Sunnyvale) seven blocks north of Bayshore freeway. Take the North Mathilda off-ramp.

**DATE:** Weekend of April 8 and 9, 1967; three rounds Saturday and two rounds Sunday.

**TYPE OF TOURNAMENT:** Five Round Swiss with four divisions as follows: CFNC A, CFNC B, CFNC C, and USCF Master/Expert/A. Each division will have its own set of prizes, and will ensure that you compete with players of your own approximate strength.

**REGISTRATION AND ROUND SCHEDULE:** All players in the A, B, or C Division will register between 9:00 and 11:00 AM Saturday morning; the first round starts at 11:00 AM, the second round starts at 2:00 PM, and the third round starts at 5:00 PM; then the fourth round starts at 10:00 Sunday and the fifth round starts at 2:00 PM. The time limit is 45 moves in 90 minutes for rounds 1, 2, and 3; then 50 moves in 2 hrs for rounds 4 and 5.

All Master and Expert players will register between 7:00 and 8:00 PM Friday, April 7; the first round starts at 8:00 PM Friday, the second round starts at 10:00 AM Saturday, the third round starts at 3:00 PM Saturday, the fourth round starts at 9:00 AM Sunday and the fifth round starts at 2:00 PM Sunday. The time limit is 40 moves in two hours, 10 moves each half hour thereafter.

**PRIZES:** Each division will be awarded its own set of prizes as follows:

**Cash Prizes:** \$75 for highest score, \$40 for second highest score

**Trophies:** The A, B, and C Divisions will each be awarded 1st, 2nd, 3rd, 4th, and 5th place trophies; Solkoff, Median, and Sonnenberg tie breaks in order

**QUALIFIER:** Winner of the USCF Master/Expert/A division will qualify directly to play in the 1967 California State Chess Championship Tournament, including \$50 entry fee and \$50 expenses. Highest and second highest scores receive \$50 each for a total of \$200 prize fund for this division.

**ENTRY FEE:** \$7.00 for CFNC A, B, or C players; \$10.00 for unrated players; \$10.00 for USCF Masters or Experts.

**EQUIPMENT:** Please bring your own chess set and chess clock (clocks are not compulsory).

**RATINGS:** The IRS rating system will be utilized. You will know your initial, handicap, and final rating round by round. If you are unrated, you will receive a rating when you register.

----- (Please detach and mail with your entry fee) -----

TO: LERA CHESS CLUB, P. O. BOX 451, SUNNYVALE, CALIFORNIA

PLEASE ENTER ME IN THE 1967 PENINSULA OPEN CHESS CHAMPIONSHIP TOURNAMENT

FULL NAME: \_\_\_\_\_ Phone \_\_\_\_\_

Street Address: \_\_\_\_\_ City \_\_\_\_\_

I am a Class \_\_\_\_\_ player. (If you are unrated, so indicate \_\_\_\_\_)

Enclosed is \$7.00 for CFNC A, B, or C player ( ), or \$10.00 for unrated player ( ).

Enclosed is \$10.00 for USCF Master or USCF Expert ( ).

**CHESS FRIENDS OF NORTHERN CALIFORNIA**  
**2763 CHELSEA DRIVE**  
**OAKLAND, CALIFORNIA 94611**

**1987 PENINSULA OPEN CHESS CHAMPIONSHIP TOURNAMENT**

**TOURNAMENT DIRECTOR:** George Koltanowski (International Chess Master). The decision of the Tournament Director will be final in all matters.

**SPONSORED BY:** Locked Employees Recreation Association (LERA) Chess Club.

**PLACE:** Main auditorium of the Locked Employees' Recreation Association (LERA) located at the north end of Matilda Avenue (opposite Suvayevs) seven blocks north of Bayshore freeway. Take the North Matilda off-ramp.

**DATE:** Weekend of April 8 and 9, 1987; three rounds Saturday and two rounds Sunday.

**TYPE OF TOURNAMENT:** Five Round Swiss with four divisions as follows: CFCNC A, CFCNC B, CFCNC C, and UECF Master/Expert. Each division will have its own set of prizes, and will ensure that you compete with players of your own approximate strength.

**REGISTRATION AND ROUND SCHEDULE:** All players in the A, B, or C Division will register between 9:45 and 11:00 AM Saturday morning; the first round starts at 11:00 AM, the second round starts at 2:00 PM, and the third round starts at 5:00 PM. The time limit is 45 moves in 90 minutes for rounds 1, 2, and 3; then 50 moves in 75 minutes for rounds 4 and 5.

All Master and Expert players will register between 7:00 and 8:00 PM Friday, April 7; the first round starts at 8:00 PM Friday, the second round starts at 10:00 AM Saturday, the third round starts at 3:00 PM Saturday, the fourth round starts at 6:00 AM Sunday and the fifth round starts at 2:00 PM Sunday. The time limit is 40 moves in two hours, 10 moves each hour for rounds 1, 2, and 3; then 50 moves in 75 minutes for rounds 4 and 5.

# Join the Best with the Rest ...

**JOIN NOW**

Complete and mail the coupon below

Mrs. Virginia McGinley, Secretary-Treasurer  
Chess Friends of Northern California  
2763 Chelsea Drive  
Oakland 11, California

Enclosed is \$3.00 for annual dues. Please enroll me  
as a member of C. F. N. C.

NAME \_\_\_\_\_

ADDRESS \_\_\_\_\_

CITY \_\_\_\_\_ PHONE \_\_\_\_\_