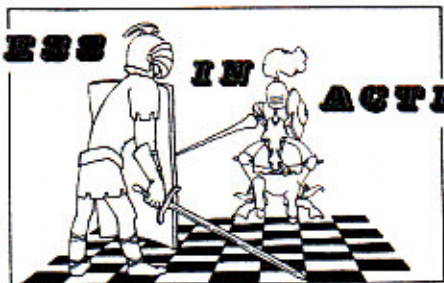
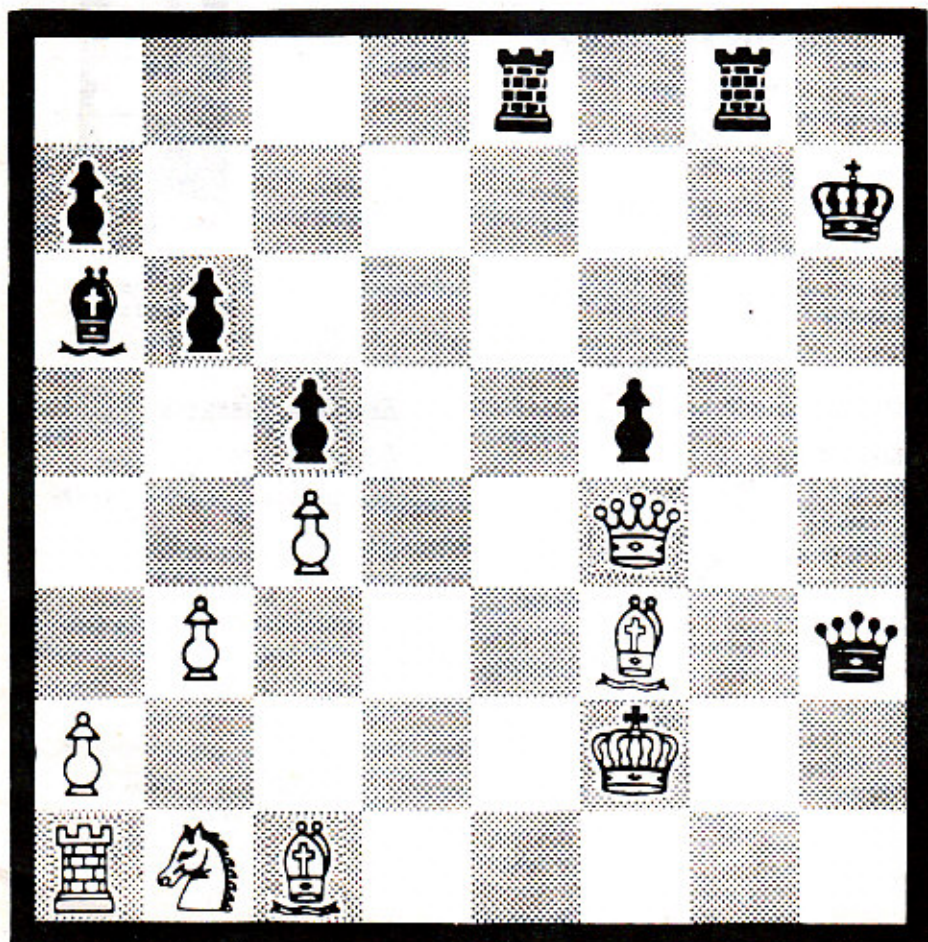


CHESS IN ACTION



WINTER 1967



BOTH SIDES IN TIME TROUBLE - BLACK TO MOVE

PUBLISHED QUARTERLY

BY

CHESS FRIENDS OF NORTHERN CALIFORNIA

CHARTER MEMBER OF THE U.S. CHESS FEDERATION

RATING ADMINISTRATOR

JAMES E. HURT
P. O. Box 451
SUNNYVALE, CALIF. 94088

TOURNAMENT DIRECTOR

JERRY LONG
4080 POPLAR ST.
CONCORD, CALIF. 94521

REGIONAL DIRECTOR

ROY MCCOLLOUGH
39 No. BROADWAY, #207
PITTSBURG, CALIF. 94568

REGIONAL DIRECTOR

DAVID BETANCO
869C - 143RD AVE.
SAN LEANDRO, CALIF. 94578

SECRETARY-TREASURER

Mrs. VIRGINIA MCGINLEY
2763 CHELSEA DRIVE
OAKLAND, CALIF. 94611



EDITOR
DICK PHILLIPS

ALL CORRESPONDENCE RELATING TO THIS PUBLICATION AND ITS CONTENTS
SHOULD BE MAILED TO THE EDITOR, P. O. BOX 652, SAN JOSE, CALIF.
95106.

CONTRA COSTA COUNTY CHAMPIONSHIP 8/26/67 - 8/27/67

The Contra Costa County Chess Championship Tournament was held at Walnut Creek on the weekend of August 26/27, 1967. A total of 76 players participated. The CFNC Tournament Director, Mr. Jerry Long, acted as tournament director.

Congratulations are extended to R. Laver and K. Grivainis for winning first and second places (tie-breaks), and to J. Ulrich, R. Hough, and G. Pickler for winning third, fourth, and fifth places (tie-breaks) in the "E/A" division. Congratulations are extended to M. Weber for winning first place and to R. Bentson, R. Chinn and T. Makens for winning second, third, and fourth places (tie-breaks) in the "B" division. Congratulations are also extended to J. Spingarn and N. Zadeh for winning first and second places (tie-breaks) and to K. Otwell and D. Campbell for winning third and fourth places (tie-breaks) in the "C" division. Results are presented below.

CLASS "E/A"

NAME	START RATING	ROUND 1	ROUND 2	ROUND 3	ROUND 4	ROUND 5	SCORE
1. R. Laver	2168	W19 2173	W5 2179	D2 2175	W3 2188	W4 2194	4*-*
2. K. Grivainis	2070	W22 2079	W6 2086	D1 2090	W10 2104	W7 2113	4*-*
3. J. Ulrich	2080	W20 2089	D4 2081	W12 2091	L1 2078	W8 2088	3*-1*
4. R. Hough	1873	W7 1890	D3 1898	W20 1914	W15 1937	L1 1931	3*-1*
5. G. Pickler	1907	W21 1920	L1 1914	D6 1911	W12 1927	W10 1947	3*-1*
6. G. Weber	1835	W8 1854	L2 1847	D5 1850	W14 1868	D11 1869	3-2
7. R. McCollough	1909	L4 1892	W17 1907	W11 1922	W12 1928	L2 1919	3-2
8. R. Ng	1903	L6 1884	W13 1892	W9 1905	W16 1921	L3 1911	3-2
9. R. Miao	1816	W16 1835	L10 1827	L8 1814	W20 1833	W13 1843	3-2
10. J. Hurt	2021	W11 2031	W9 2039	D15 2041	L2 2027	L5 2007	2*-2*
11. R. Mitchell	1876	L10 1866	W14 1883	L7 1868	W17 1884	D6 1883	2*-2*
12. S. Campbell	1900	W18 1911	D15 1919	L3 1909	L5 1893	W19 1908	2*-2*
13. P. Brown	1664	W17 1689	L8 1681	BYE 1681	L7 1675	L9 1665	2-3
14. W. Steinberg	1900	L15 1892	L11 1875	W21 1889	L6 1871	W18 1883	2-3
15. D. Balfie	2100	W14 2108	D12 2100	D10 2098	L4 2075	F 2075	2-3
16. F. Berry	1900	L9 1881	W19 1898	W18 1910	L8 1894	F 1894	2-3
17. G. Delacruz	1900	L13 1875	L7 1860	D19 1881	L11 1845	W20 1862	1*-3*
18. C. McGinley	1731	L12 1770	W22 1791	L16 1779	D19 1783	L14 1771	1*-3*
19. D. Kent	1900	L1 1895	L16 1878	D17 1877	D18 1873	L12 1858	1-4
20. J. Mecorney	1899	L3 1890	W21 1904	L4 1888	L9 1869	L17 1852	1-4
21. R. Cunco	1843	L5 1830	L20 1816	L14 1802	F 1802	F 1802	0-5
22. A. McKenzie	1897	L2 1888	L18 1867	F 1867	F 1867	F 1867	0-5

CLASS "B"

1. M. Weber	1765	W20 1777	W12 1789	W6 1799	W2 1812	D5 1812	4*-*
2. R. Bentson	1684	W24 1697	W17 1711	W8 1725	L1 1712	W6 1726	4-1
3. R. Chinn	1672	W10 1693	L6 1674	W25 1691	W17 1705	W7 1720	4-1

* is equal to 1/2.

Contra Costa County Championship (Cont.)

CLASS "B" (Cont.)

NAME	START RATING	ROUND 1	ROUND 2	ROUND 3	ROUND 4	ROUND 5	SCORE
4. T. Makens	1750	D28 1746	W26 1757	W9 1771	D7 1768	W8 1780	4-1
5. D. Hardy	1777	W27 1789	W14 1800	F 1800	W18 1810	D1 1810	3*-1*
6. D. Glanville	1605	W23 1625	W3 1644	L1 1634	W16 1652	L2 1638	3-2
7. L. Lopez	1650	W19 1670	D9 1672	W23 1689	D4 1692	L3 1677	3-2
8. P. Lekas	1623	W25 1642	W16 1660	L2 1646	W11 1665	L4 1653	3-2
9. B. Beardsley	1708	W18 1721	D7 1719	L4 1705	D13 1707	W17 1720	3-2
10. D. Clapp	1790	L3 1769	L27 1748	W22 1764	W21 1777	W16 1789	3-2
11. R. Lambert	1700	L26 1680	W28 1695	W12 1710	L8 1691	W18 1705	3-2
12. S. Mujahed	1662	W13 1683	L1 1671	L11 1656	D15 1654	W20 1670	2*-2*
13. D. Betanco	1776	L12 1755	D20 1751	W19 1766	D9 1764	D14 1760	2*-2*
14. B. Clipson	1657	W15 1671	L5 1660	L16 1645	W23 1663	D13 1667	2*-2*
15. B. Ipsen	1602	L14 1588	L25 1576	W20 1595	D12 1597	W21 1617	2*-2*
16. J. Fosaaen	1673	W22 1694	L8 1676	W14 1691	L6 1673	L10 1661	2-3
17. J. Kasprick	1636	W21 1655	L2 1641	BYE 1641	L3 1627	L9 1614	2-3
18. N. Smith	1636	L9 1623	W19 1644	W24 1658	L5 1648	L11 1634	2-3
19. D. Mslig	1761	L7 1741	L18 1720	L13 1705	W25 1720	W23 1734	2-3
20. L. Trotter	1655	L1 1643	D13 1647	L15 1628	W24 1642	L12 1626	1*-3*
21. S. Kilker	1710	L17 1691	D24 1687	W28 1701	L10 1688	L15 1668	1*-3*
22. J. Evans	1792	L16 1771	L23 1751	L10 1735	BYE 1735	D24 1728	1*-3*
23. J. Mackelbach	1700	L6 1680	W22 1700	L7 1683	L14 1665	L19 1651	1-4
24. J. Dennis	1603	L2 1590	D21 1594	L18 1580	L20 1566	D22 1573	1-4
25. E. Hawksworth	1700	L8 1681	W15 1693	L3 1676	L19 1661	F 1661	1-4
26. D. Reich	1608	W11 1628	L4 1617	F 1617	F 1617	F 1617	1-4
27. J. Ulrich	1667	L5 1655	W10 1676	F 1676	F 1676	F 1676	1-4
28. J. Bush	1640	D4 1644	L11 1629	L21 1615	F 1615	F 1615	**4*

CLASS "C"

1. J. Spingarn	1590	W14 1604	W25 1618	W15 1633	D2 1632	W5 1648	4*-*
2. N. Zadeh	1577	W23 1592	W22 1606	W10 1620	D1 1621	W9 1637	4*-*
3. K. Olwell	1558	W17 1571	L5 1557	W19 1572	W7 1588	W8 1604	4-1
4. D. Campbell	1560	L16 1541	W20 1556	W24 1573	W6 1590	W11 1603	4-1
5. D. Lonie	1596	W21 1610	W3 1624	D6 1623	W8 1639	L1 1623	3*-1*
6. M. Crossland	1568	W20 1582	W12 1593	D5 1594	L4 1577	W14 1592	3*-1*
7. R. Jacob	1541	W13 1558	W9 1576	L8 1561	L3 1545	W18 1560	3-2
8. R. Otten	1571	W19 1586	W16 1599	W7 1614	L5 1598	L3 1582	3-2
9. D. Burgess	1587	W18 1601	L7 1583	W23 1597	W15 1612	L2 1596	3-2
10. D. Claudio	1550	L24 1536	W26 1545	L9 1531	W12 1544	W17 1558	3-2
11. D. Mitchell	1466	L15 1454	W21 1473	W25 1492	W14 1511	L4 1498	3-2
12. J. Dorfman	1434	W22 1455	L6 1444	D13 1448	L10 1435	W19 1455	2*-2*
13. B. Lamon	1573	L7 1556	L19 1539	D12 1535	W22 1550	W20 1564	2*-2*

* is equal to 1/2.

Contra Costa County Championship (Cont.)

CLASS "C" (Cont.)

NAME	START RATING	ROUND 1	ROUND 2	ROUND 3	ROUND 4	ROUND 5	SCORE
14. J. Eliason	1550	L1 1536	W17 1550	W16 1564	L11 1545	L6 1530	2-3
15. B. Clipseon	1557	W11 1569	W24 1586	L1 1571	L9 1556	L16 1536	2-3
16. J. Tilden	1492	W4 1511	L8 1498	L14 1484	L17 1468	W15 1488	2-3
17. S. Smith	1488	L3 1475	L14 1461	W21 1479	W16 1495	L10 1481	2-3
18. W. Zimmerman	1546	L9 1532	L23 1516	W26 1526	BYE 1526	L7 1511	2-3
19. B. Earl	1537	L8 1522	W13 1539	L3 1524	D20 1523	L12 1503	1*-3*
20. J. Mikl	1522	L6 1508	L4 1493	W22 1510	D19 1511	L13 1497	1*-3*
21. A. Nelson	1550	L5 1536	L11 1517	L17 1499	D26 1493	BYE 1493	1*-3*
22. P. Westerline	1555	L12 1534	L2 1520	L20 1503	L13 1488	W26 1499	1-4
23. C. Barton	1542	L2 1527	W18 1543	L9 1529	F 1529	F 1529	1-4
24. G. Bigelow	1590	W10 1604	L15 1587	L4 1570	F 1570	F 1570	1-4
25. R. Breen	1550	W26 1559	L1 1545	L11 1526	F 1526	F 1526	1-4
26. L. Lane	1381	L25 1372	L10 1363	L18 1353	D21 1359	L22 1348	*-4*

1967 NORTHERN CALIFORNIA CLASS CHAMPIONSHIP 9/30/67 - 10/1/67

The 1967 Northern California Class Championship Chess Tournament was held at LERA, Sunnyvale, on the weekend of September 30, 1967. A total of 101 players participated. International Chessmaster George Koltanowski acted as tournament director.

Congratulations are extended to R. Hammie, G. Weber, D. Card, and C. Huneke for winning first, second, third, and fourth places (tie-breaks) and to G. Pickler for winning fifth place in the "A" division. Congratulations are extended to J. Spingarn, J. Fossaan, and J. Mathis for winning first second, and third places (tie-breaks) and to G. Syty and J. Ulrich for winning fourth and fifth places (tie-breaks) in the "B" division. Congratulations are also extended to D. Burgess for winning first place, and to D. Chan, H. Radke, R. Lanovette, and R. Vomini for winning second, third, fourth, and fifth places (tie-breaks) in the "C" division. Results are presented below.

CLASS "A"

NAME	START RATING	ROUND 1	ROUND 2	ROUND 3	ROUND 4	ROUND 5	SCORE
1. R. Hammie	1944	W15 1957	W2 1970	W8 1985	W11 1997	L3 1980	4-1
2. G. Weber	1869	W18 1888	L1 1875	W12 1890	W5 1909	W6 1926	4-1
3. D. Card	1969	L7 1949	W15 1961	W14 1973	W13 1983	W1 2000	4-1
4. C. Huneke	1899	W17 1914	L11 1896	W18 1914	W9 1927	W8 1944	4-1
5. G. Pickler	1947	W19 1956	W7 1970	D11 1966	L2 1947	W12 1960	3*-1*

* is equal to 1/2.

1967 Northern California Class Championship (Cont.)

CLASS "A" (Cont.)

NAME	START RATING	ROUND 1	ROUND 2	ROUND 3	ROUND 4	ROUND 5	SCORE
6. R. Ng	1911	W9 1923	D12 1920	W13 1932	D10 1930	L2 1913	3-2
7. M. Watson	1877	W3 1897	L5 1883	W19 1894	L8 1879	W11 1895	3-2
8. R. McCollough	1919	W20 1932	W14 1946	L1 1931	W7 1946	L4 1929	3-2
9. Wm. Montfort	1808	L6 1796	W21 1817	W16 1837	L4 1824	W15 1841	3-2
10. R. Mitchell	1883	L13 1864	D19 1860	W17 1876	D6 1878	W14 1893	3-2
11. D. Amkraut	1839	W16 1859	W4 1877	D5 1881	L1 1869	L7 1853	2*-2*
12. K. Yamamoto	1841	W22 1857	D6 1860	L2 1845	W20 1860	L5 1847	2*-2*
13. R. Cuneo	1802	W10 1821	D17 1823	L6 1811	L3 1801	W20 1817	2*-2*
14. J. Mecorney	1852	W21 1872	L8 1858	L3 1846	W16 1864	L10 1849	2-3
15. G. Delacruz	1862	L1 1849	L3 1837	BYE 1837	W18 1856	L9 1839	2-3
16. R. Santiago	1934	L11 1914	W22 1926	L9 1906	L14 1888	W17 1903	2-3
17. L. Jacobsen	1878	L4 1863	D13 1861	L10 1845	W19 1857	L16 1842	1*-3*
18. D. Saccuzzo	1944	L2 1925	W20 1937	L4 1919	L15 1900	D19 1894	1*-3*
19. Wm. Thomas	1766	L5 1757	D10 1761	L7 1750	L17 1738	D18 1744	1-4
20. R. Brinig	1846	L8 1833	L18 1821	BYE 1821	L12 1806	L13 1790	1-4
21. M. Bedford	1942	L14 1922	L9 1901	F 1901	F 1901	F 1901	0-5
22. M. Gazse	1839	L12 1823	L16 1811	F 1811	F 1811	F 1811	0-5

CLASS "B"

1. J. Spingarn	1665	W31 1686	W48 1705	D8 1709	W22 1724	W4 1740	4*-*
2. J. Fosaaen	1661	W38 1682	W16 1697	W11 1716	D8 1717	W17 1733	4*-*
3. J. Mathis	1778	W46 1789	W45 1799	D1 1795	W10 1807	W8 1820	4*-*
4. G. Syty	1650	W37 1871	W17 1688	W13 1704	W27 1722	L1 1706	4-1
5. Jack Ulrich	1876	L14 1857	W41 1872	W21 1886	W25 1706	W15 1721	4-1
6. R. Frohman	1813	W42 1830	L11 1819	W18 1841	W32 1660	W13 1878	4-1
7. J. Finley	1650	L29 1639	W35 1657	W38 1878	W11 1697	W12 1713	4-1
8. D. Lieberman	1710	BYE 1710	W26 1724	W20 1738	D2 1737	L3 1724	3*-1*
9. D. Smith	1730	L18 1716	W46 1729	W16 1742	D19 1738	W26 1752	3*-1*
10. C. Ehmman	1646	D28 1651	W39 1670	W42 1685	L3 1673	W27 1692	3*-1*
11. R. Forsyth	1747	W40 1759	W6 1770	L2 1751	L7 1732	W33 1746	3-2
12. G. Roust	1677	W34 1691	W14 1705	W15 1719	L13 1701	L7 1685	3-2
13. P. Vaysale	1668	W44 1682	W30 1697	L4 1681	W12 1699	L6 1681	3-2
14. E. Phillips	1612	W5 1631	L12 1617	L23 1604	W35 1623	W32 1642	3-2
15. R. Horn	1622	W35 1642	W18 1664	L12 1650	W29 1671	L5 1656	3-2
16. D. Glanville	1638	W43 1658	L2 1643	L9 1630	W36 1649	W28 1670	3-2
17. R. Yaranon	1689	W47 1702	L4 1685	W45 1699	W20 1713	L2 1697	3-2
18. C. McGinley	1779	W9 1793	L15 1771	L6 1749	W41 1760	W40 1771	3-2
19. A. Gullmes	1619	W36 1639	L27 1626	W43 1646	D9 1650	D24 1654	3-2
20. E. Mugnani	1622	W32 1642	W29 1664	L8 1650	L17 1636	W38 1657	3-2
21. P. Zink	1611	W33 1629	L23 1614	L5 1600	W42 1618	W34 1634	3-2

* is equal to 1/2.

1967 Northern California Class Championship (Cont.)

CLASS "B" (Cont.)

NAME	START RATING	ROUND 1	ROUND 2	ROUND 3	ROUND 4	ROUND 5	SCORE
22. E. Tapia	1651	W48 1672	L31 1660	W39 1678	L1 1663	W30 1679	3-2
23. J. Sutherland	1683	L41 1665	W21 1680	W14 1693	L28 1679	W39 1696	3-2
24. H. Poschmann	1765	L30 1744	W44 1754	W34 1764	D26 1761	D19 1757	3-2
25. D. Hoekman	1773	L26 1752	W47 1762	W30 1774	L5 1754	W29 1770	3-2
26. H. Tweeden	1650	W25 1671	L8 1657	W31 1678	D24 1681	L9 1667	2*-2*
27. R. Bentson	1726	D39 1726	W19 1739	W28 1756	L4 1738	L10 1719	2*-2*
28. N. Wild	1763	D10 1758	W36 1772	L27 1755	W23 1769	L16 1748	2*-2*
29. L. Wilson	1782	W7 1793	L20 1771	W41 1781	L15 1760	L25 1744	2-3
30. P. Hubbard	1645	W24 1666	L13 1651	L25 1639	W31 1660	L22 1644	2-3
31. Z. Vancura	1798	L1 1777	W22 1789	L28 1768	L30 1747	W41 1757	2-3
32. K. Field	1715	L20 1695	W20 1708	W47 1720	L6 1701	L14 1682	2-3
33. H. Duncanson	1667	L21 1649	L43 1636	W37 1656	W45 1670	L11 1656	2-3
34. E. Inpson	1617	L12 1603	BYE 1603	L24 1593	W43 1614	L21 1598	2-3
35. B. Chinn	1720	L15 1700	L7 1682	BYE 1682	L14 1663	W47 1675	2-3
36. P. Aubry	1719	L19 1699	L28 1685	W44 1697	L16 1678	BYE 1678	2-3
37. T. Makens	1780	L4 1759	L42 1738	L33 1718	W44 1728	W43 1742	2-3
38. J. Hauser	1796	L2 1775	W49 1786	L7 1765	D40 1760	L20 1739	1*-3*
39. J. Evans	1728	D27 1728	L10 1709	L22 1691	W17 1703	L23 1686	1*-3*
40. T. Koczynski	1642	L11 1630	L32 1617	W46 1633	D38 1638	L18 1627	1*-3*
41. D. Harris	1621	W23 1639	L5 1624	L29 1614	L18 1603	L31 1593	1-4
42. F. Crabill	1650	L6 1633	W37 1654	L10 1639	L21 1621	L44 1603	1-4
43. J. David-Malig	1734	L16 1714	W33 1727	L19 1707	L34 1686	L37 1672	1-4
44. J. Weller	1611	L13 1597	L24 1587	L36 1575	L37 1565	W42 1583	1-4
45. J. Kasprisk	1614	W49 1633	L3 1623	L17 1609	L33 1595	F 1595	1-4
46. H. Huff	1650	L3 1639	L9 1626	L40 1610	BYE 1610	F 1610	1-4
47. J. Hale	1621	L17 1608	L25 1598	L32 1586	L39 1574	L35 1562	0-5
48. J. Long	1785	L22 1764	L1 1745	F 1745	F 1745	F 1745	0-5
49. B. Jansen	1677	L45 1658	L38 1647	F 1647	F 1647	F 1647	0-5

CLASS "C"

1. D. Burgess	1596	W27 1610	W22 1624	W8 1636	W2 1650	W6 1664	5-0
2. D. Chan	1550	W29 1565	W5 1579	W7 1596	L1 1582	W10 1596	4-1
3. H. Radke	1528	W18 1545	L7 1531	W27 1548	W8 1563	W13 1577	4-1
4. R. Lanouette	1508	W25 1526	L8 1510	W11 1528	W7 1547	W15 1563	4-1
5. R. Uomini	1486	W30 1505	L2 1491	W19 1509	W18 1527	W9 1546	4-1
6. L. Allen	1565	D23 1564	W15 1579	W16 1595	W9 1612	L1 1598	3*-1*
7. A. Gardner	1581	W12 1596	W3 1610	L2 1593	L4 1574	W19 1589	3-2
8. G. Metcalf	1502	W28 1520	W4 1536	L1 1524	L3 1509	W17 1525	3-2
9. H. Barnett	1566	W14 1581	W10 1595	W17 1609	L6 1592	L5 1573	3-2

* is equal to 1/2.

1967 Northern California Class Championship (Cont.)

CLASS "C" (Cont.)

NAME	START RATING	ROUND 1	ROUND 2	ROUND 3	ROUND 4	ROUND 5	SCORE
10. W. Zimmerman	1504	W26 1522	L9 1508	W25 1526	W12 1543	L2 1529	3-2
11. W. Cook	1550	L17 1533	W20 1549	L4 1531	W22 1547	W16 1564	3-2
12. A. Barocto	1550	L7 1535	W14 1551	BYE 1551	L10 1534	W18 1551	3-2
13. J. Warner	1480	W20 1499	L23 1485	W22 1503	W17 1520	L3 1606	3-2
14. D. Thompson	1550	L9 1535	L12 1519	BYE 1519	W26 1535	W23 1551	3-2
15. C. Barton	1529	D16 1530	L6 1515	W28 1531	W23 1547	L4 1531	2*-2*
16. M. Sullivan	1561	D15 1560	W26 1575	L6 1559	W25 1574	L11 1557	2*-2*
17. A. Clarren	1517	W11 1534	W19 1551	L9 1537	L13 1520	L8 1504	2-3
18. J. McCarley	1555	L3 1538	W24 1551	W23 1567	L5 1549	L12 1532	2-3
19. B. Kondrat	1550	W24 1563	L17 1546	L5 1528	W21 1545	L7 1530	2-3
20. J. Lieberman	1550	L13 1531	L11 1515	L21 1500	W30 1517	W26 1533	2-3
21. R. Palasek	1565	L22 1548	L27 1532	W20 1547	L19 1530	W25 1545	2-3
22. J. Mikl	1534	W21 1551	L1 1537	L13 1519	L11 1503	D24 1501	1*-3*
23. W. Weekley	1542	D6 1543	W13 1557	L18 1541	L15 1525	L14 1509	1*-3*
24. N. Zimmerman	1487	L19 1474	L18 1461	L26 1447	W28 1465	D22 1467	1*-3*
25. A. Gounod	1550	L4 1532	W28 1548	L10 1530	L16 1515	L21 1500	1-4
26. K. Hart	1550	L10 1532	L16 1517	W24 1531	L14 1515	L20 1499	1-4
27. E. Rubsanen	1550	L1 1536	W21 1552	L3 1535	F 1535	F 1535	1-4
28. R. Karr	1550	L8 1532	L25 1516	L15 1500	L24 1482	W30 1499	1-4
29. J. Antuna	1519	L2 1504	W30 1521	F 1521	F 1521	F 1521	1-4
30. J. McLachlin	1550	L5 1531	L29 1514	F 1514	L20 1497	F 1480	0-5

* is equal to 1/2.

1967/1968 Northern California Junior Chess Championship Tournament

The first three winners of each age group of the Alameda County, Contra Costa County, and Peninsula Junior Chess Championship Tournaments held on December 2, 1967 are presented below. Congratulations to all winners! You (or your alternates) are hereby invited to compete in the upcoming 1967/1968 Northern California Junior Chess Championship Tournament to be held at the Berkeley YMCA on the weekend of January 27/28, 1968 with International Chessmaster George Koltanowski as your tournament director. See 1968 CFNC Championship Tourney notice on another page of this magazine.

Alameda (29 players)

	<u>First Place</u>	<u>Second Place</u>	<u>Third Place</u>
17 and 18 years	Van Fong 18	Mike Weber 18	Fred Crosby 17
14, 15, 16 years	Bob Martinez 16	Lee Henderson 15	Tom Lojo 14
11, 12, 13 years	Dave Glanville 13	Douglas Turney 13	Edan Lee 13
10 years and under	Eddie Schwartz 10	-	-

Contra Costa (47 players)

17 and 18 years	Jim Fossaaen 17	Alan Anderson 17	Lupe Lopez 18
14, 15, 16 years	Bill Clipson 16	Jim Eliason 14	Keith Underwood 15
11, 12, 13 years	James Shearer 13	Jeff Pugh 13	Eric Stoltz 13
10 years and under	Dave Mitchell 10	Shannon McLain 9	Terry Garnett 10

Peninsula (67 players)

16, 17, 18 years	Dave Amkraut 16	Mike Vasquez 16	Tom Byrne 16
13, 14, 15 years	Dan Chan 15	Ridge Schneider 15	Jay Spingarn 15
10, 11, 12 years	Todd Corenson 11	Jeff White 10	Brant Corenson 12
9 years and under	Matt Sullivan 9	Mark Thorson 8	Shawn Hurt 8

CFNC BERKELEY OPEN CHESS CHAMPIONSHIP 10/28/67 - 10/29/67

The CFNC Berkeley Open Chess Championship Tournament was held at the Berkeley YMCA on the weekend of October 28, 1967. A total of 49 players participated. International Chessmaster George Koltanowski acted as tournament director.

Congratulations are extended to J. Ulrich for winning first place, to K. Grivainis and G. Weber for winning second and third places (tie-breaks), and to K. Yamamoto and E. Meyers for winning fourth and fifth places (tie-breaks) in the "E/A" division. Congratulations are extended to D. Lieberman for winning first place, to D. Betanco and C. Falbo for winning second and third places (tie-breaks), and to J. Spingarn for winning fourth place in the "B" division. Congratulations are also extended to J. Dennis for winning first place, to J. Culp for winning second place, and to B. Lamon and D. Claudio for winning third and fourth places (tie-breaks) in the "C" division. Results are presented below.

CLASS "E/A"

NAME	START RATING	ROUND 1	ROUND 2	ROUND 3	ROUND 4	ROUND 5	SCORE
1. J. Ulrich	2088	W4 2094	W11 2096	W2 2113	W6 2127	D3 2120	4*-*
2. K. Grivainis	2113	W7 2120	W3 2129	L1 2112	D5 2099	W6 2113	3*-1*
3. G. Weber	1926	W5 1937	L2 1928	W4 1941	W8 1947	D1 1954	3*-1*
4. K. Yamamoto	1847	L1 1841	BYE 1841	L3 1828	W11 1833	W9 1851	3-2
5. E. Meyers	1800	L3 1789	D7 1793	BYE 1793	D2 1806	W10 1821	3-2
6. P. Grey	2071	D10 2061	W9 2070	W8 2072	L1 2058	L2 2044	2*-2*
7. W. Sprague	1900	L2 1893	D5 1889	W11 1891	D9 1891	D8 1883	2*-2*
8. P.M. Brown	1665	D9 1674	W10 1696	L6 1694	L3 1688	D7 1696	2-3
9. Steve Kornher	1900	D8 1891	L6 1882	W10 1895	D7 1895	L4 1877	2-3
10. L. Brown	1814	D6 1824	L8 1802	L9 1789	BYE 1789	L5 1774	1*-3*
11. R. Uomini	1546	BYE 1546	L1 1544	L7 1542	L4 1537	F 1537	1-4

CLASS "B"

1. D. Lieberman	1724	BYE 1724	W16 1737	W11 1754	W5 1771	W4 1787	5-0
2. D. Betanco	1760	W16 1772	W13 1786	L5 1769	W6 1785	W9 1800	4-1
3. C. Falbo	1726	L7 1705	W8 1721	W15 1733	W14 1746	W5 1762	4-1
4. J. Spingarn	1740	W15 1751	W20 1762	D6 1763	W13 1778	L1 1762	3*-1*
5. J. Fosaaen	1733	W17 1745	W14 1758	W2 1775	L1 1758	L3 1742	3-2
6. D. Clapp	1789	W18 1800	D9 1797	D4 1796	L2 1779	W11 1794	3-2
7. D. Campbell	1603	W3 1624	L11 1613	L13 1601	W8 1622	W18 1640	3-2
8. J. Finley	1713	BYE 1713	L3 1697	W10 1714	L7 1693	W19 1705	3-2
9. R. Schneider	1707	W21 1715	D6 1718	W20 1729	D11 1730	L2 1716	3-2
10. R. Bentson	1719	L20 1698	W12 1711	L8 1694	W15 1707	W14 1721	3-2
11. N. Wild	1748	W12 1759	W7 1770	L1 1753	D9 1752	L6 1737	2*-2*
12. N. Smith	1634	L11 1623	L10 1610	W17 1626	D19 1625	W13 1645	2*-2*

* is equal to 1/2.

CFNC Berkeley Open Chess Championship (Cont.)

CLASS "B" (Cont.)

NAME	START RATING	ROUND 1	ROUND 2	ROUND 3	ROUND 4	ROUND 5	SCORE
13. Jack Ulrich	1721	W19 1732	L2 1718	W7 1730	L4 1715	L12 1695	2-3
14. A. Etche	1644	W22 1664	L5 1651	W19 1665	L3 1652	L10 1638	2-3
15. L. Trotter	1626	L4 1615	W18 1633	L3 1621	L10 1608	W21 1618	2-3
16. L. Henderson	1650	L2 1638	L1 1625	BYE 1625	L17 1607	W20 1622	2-3
17. C. Vail	1625	L5 1613	L22 1602	L12 1586	W16 1604	BYE 1604	2-3
18. D. Glanville	1670	L6 1659	L15 1641	W21 1657	W20 1665	L7 1647	2-3
19. F. Crabill	1803	L13 1592	W21 1604	L14 1590	D12 1591	L8 1579	1*-3*
20. D. Harris	1593	W10 1614	L4 1603	L9 1592	L18 1578	L16 1563	1-4
21. K. Hart	1499	L9 1491	L19 1479	L18 1469	BYE 1469	L15 1459	1-4
22. R. Anderson	1750	L14 1730	W17 1741	F 1741	F 1741	F 1741	1-4

CLASS "C"

1. J. Dennis	1573	W9 1587	W10 1600	W2 1615	W7 1629	W5 1642	5-0
2. J. Culp	1533	W14 1546	W4 1563	L1 1548	W6 1566	W7 1581	4-1
3. B. Lamon	1564	W8 1579	W11 1586	D6 1586	L5 1568	W9 1583	3*-1*
4. D. Claudio	1558	W16 1572	L2 1555	W9 1570	W11 1580	D6 1580	3*-1*
5. Bob Smith	1522	L6 1508	W13 1524	W10 1539	W3 1557	L1 1544	3-2
6. J. Hale	1562	W5 1576	W15 1593	D3 1593	L2 1575	D4 1575	3-2
7. J. Lieberman	1533	BYE 1533	W14 1546	W12 1562	L1 1548	L2 1533	3-2
8. F. Broadley	1550	L3 1535	L9 1518	W14 1531	W12 1547	W10 1561	3-2
9. Walt Zimmerman	1529	L1 1515	W8 1532	L4 1517	W15 1535	L3 1520	2-3
10. A. Clarren	1504	BYE 1504	L1 1491	L5 1476	W13 1494	L8 1480	2-3
11. S. Smith	1371	W12 1394	L3 1385	W15 1409	L4 1399	L13 1387	2-3
12. C. Hart	1550	L11 1527	W16 1541	L7 1525	L8 1509	W14 1522	2-3
13. R. Turney	1533	L15 1519	L5 1503	W16 1518	L10 1500	W11 1512	2-3
14. N. Zimmerman	1467	L2 1454	L7 1441	L8 1428	W16 1445	L12 1432	1-4
15. B. Hall	1584	W13 1598	L6 1582	L11 1558	L9 1540	F 1540	1-4
16. A. Gounod	1500	L4 1486	L12 1472	L13 1457	L14 1440	BYE 1440	1-4

* is equal to 1/2.

CALENDAR CAPSULE

BAY AREA AMATEUR - OAKLAND - 12/16-17/67
 NEW YEAR OPEN - WALNUT CREEK - 1/6-7/68
 PRESIDIO OPEN - SAN FRANCISCO - 1/20-21/68
 C.F.N.C. CHAMPIONSHIPS - BERKELEY - 1/27-28/68
 CONCORD OPEN - CONCORD - 2/27-28/68
 PENINSULA OPEN - SUNNYVALE - 4/27-28/68
 WALNUT CREEK OPEN - WALNUT CREEK - 5/17-18/68
 BERKELEY OPEN - BERKELEY - 6/29-30/68

JERRY LONG

FIRST ANNUAL
NEW YEAR OPEN CHAMPIONSHIP

- SPONSORS.....Concord and Walnut Creek chess clubs
- DATE.....Saturday & Sunday, January 6th & 7th, 1968
- PLACE.....Walnut Creek Recreation Center, Civic Drive,
Walnut Creek, California
- PRIZES....."Master/Expert" Division: 100% of the entry
fees collected from this di-
vision will be returned in two
cash prizes.
1st 65% + Trophy, 2nd 35%
- "A" Division: 1st \$40.00 + Trophy, 2nd \$25.00,
and 3rd \$10.00
- "B" Division: 1st \$40.00 + Trophy, 2nd \$25.00,
3rd \$10.00
- "C" Division: 1st \$40.00 + Trophy, 2nd \$25.00,
and 3rd \$10.00
- "Jr." Division: Trophies to 1st, 2nd & 3rd-place
- ELIGIBILITY.....Open to all chess players who are or will become
members of Chess Friends of Northern California.
- TYPE.....Five-round Swiss System Tournament
- TIME CONTROL.....Rounds 1, 2 and 3 will be played at the rate of
45 moves in 1½ hours; rounds 4 and 5 at the rate
of 40 moves in 1½ hours.
- ROUND SCHEDULE...Round 1 Sat. Jan. 6th 12:00 noon
Round 2 Sat. Jan. 6th 3:30 pm
Round 3 Sun. Jan. 7th 9:00 am
Round 4 Sun. Jan. 7th 12:30 pm
Round 5 Sun. Jan. 7th 4:00 pm
- ENTRY FEE.....\$10.00 plus C.F.N.C. dues for "Master/Expert" Div.
\$5.00 plus C.F.N.C. dues for "A", "B" and "C" Div.
\$3.00 for "Junior" Div. (18 years and under with
no established U.S.C.F. or C.F.N.C. rating)
- REGISTRATION.....From 9:00 to 11:30 am on Saturday, Jan. 6th, 1968
- T.D.....Jerry Long, C.F.N.C. Tournament Director
- NOTE.....BRING YOUR CHESS SET AND CLOCK

ADVANCE REGISTRATION: (Make checks payable to Bob Jacob) _ _ _ _ _

TO: Bob Jacob P. O. Box 391
Treasurer Walnut Creek, Calif.

NAME _____ PHONE _____ RATING _____
ADDRESS _____ CITY _____ ZIP _____

PLEASE ENTER ME IN THE NEW YEAR OPEN CHAMPIONSHIP

CFNC OFFICIAL RATING LIST

The following rating list is the winter 1967 "Chess In Action" rating list updated to include LERA "C" Tournament, LERA-IBM Match, Walnut Creek Tournament of 8/26 and 8/27/67, the Northern California Class Championship Tournament at LERA on 9/30 and 10/1/67, and the Berkeley Open Tournament of 10/28 and 10/29/67.

M	Master	2200 and above
E	Expert	2000 to 2199
A	Advanced	1800 to 1999
B	Intermediate	1600 to 1799
C	Average	1599 and below

Don Ackerman	1852	Mitchell Bedford	1901	Aldo Caccamo	1607
Don Adams		Clarence Beem	1515	Jose Camahort	1783
Larry Adkins	1761	Russel Belcher	1640	Duncan Campbell	1640
Dr. John Alden	1782	Dan Belmont	1932	Scott Campbell	1908
David Allais	1640	Gene Bennett	1650	Terry Canfield	1614
Bruce Allen	1750	Ed Bent	1470	Donald Cantrell	
Jamie Allen	1612	Russel Bentson	1721	Don Card	1989
Larry Allen	1609	Frank Berry	1894	Eugene Carol	
Kenneth Altman	1588	David Betanco	1800	Benjamin Carter	1901
Wald Amberstone	1542	Sam Bettencourt	1802	Joel Carter	1600
Edward Ambrose	1661	Willie Bettencourt	1680	Mike Cashion	
David Amkraut	1853	Gordon Bigelow	1570	Bob Castro	1594
R. Anderson	1741	William Bigelow		Tom Cathey	1598
Ted Anderson	1497	Joe Bikulcius	1669	Ron Chako	1633
Nick Andres	1648	John Blackstone	2238	Dan Chan	1596
Jim Antuna	1521	David Blohm	2238	Chuck Chattin	1653
Bob Armstrong	1550	Rinohard Boehme	1532	Bob Chinn	1675
W. S. Arcemont	1515	Garret Boer	1902	Richard Christian	1842
Paul Arnstein	1507	Edward Bogas	2066	Ludvik Cizinsky	1924
Pat Aubry	1678	C. Bokemper	1503	Donald Clapp	1794
		Robert Boles	1819	Art Clarren	1480
Henry Baer	1629	Alvin Boyd	1566	Dennis Claudio	1580
Dennis Balf	2075	James Breen	1530	Bob Clipson	1667
Alberto Barocio	1551	Robert Breen	1526	Wm. Clipson	1536
John Barlow	1894	Robert Brinig	1790	Ernest Clot	1503
Harold Barnett	1623	Edward Britton	1545	Allen Cohan	1642
Ziad Baroudi	2224	F. Broadley	1561	Eli Cole	1593
Jack Barrientos	1494	Lincoln Brown	1774	Omar Conger	1566
Patrick Barry	1675	P. M. Brown, Jr.	1696	Dan Conklin	1550
Ernest Bartholmew	1726	Thomas Brown	1901	John Conness	1394
Carl Barton	1531	Peter Bryant	1527	Fred Cook	1814
Stanley Bass	1365	Gerard Budowski	2111	Larry Cook	1634
Dr. Henning Bauer	1528	David Burgess	1664	Willis Cook	1564
Clarence Beale	1603	Mike Burns	1394	Dave Cooke	1857
Tom Beard	1534	James Bush	1615	Wendell Coombs	1539
Bruce Beardsley	1720	Louie Busses	1650	Brant Corenson	1531

Todd Corenson	1563	Ralph Forsyth	1746	Donald Harris	1563
Jim Cornwell	1647	David Forthoffer	1996	Tom Harris	1660
Woody Cox	1642	James Fossauen	1742	C. Hart	1522
Forrest Crabill	1579	Roy Rouch	1550	Ken Hart	1459
Maurice Crossland	1592	James Fredgren	1904	Barbara Harwell	1430
Jack Culp	1581	George French	1749	Jerome Hauke	1726
Ray Cuneo	1817	Jerry Friedman	1633	John Hauptman	1538
June Cutburth	1514	Robert Frohman	1678	James Hauser	1739
				Elwin Hawksworth	1661
Col. Chas. Daly	1784	Fred Galvin		Gil Hayes	1528
Sergio Damasceno	1550	Gabriel Garcia	1640	Paul Healy	1603
Ted Dana	1868	Arthur Gardner	1539	Tom Heldt	2113
J. Danton	1584	Mark Gazse	1811	L. Henderson	1622
Dr. J. David-Malig	1872	Robert Geis	1450	Wade Hendricks	2035
Don Day	1458	Cliff Geymer	1650	Carl Hendrickson	1550
Thomas Defesi	1517	William Giles	1632	Wm. Herndon	1550
Manno DeGroot	1650	James Gillis	1590	Joe Hess	1562
Karl Deibler	1547	Lance Gilmore	1650	Steven Hibbard	1502
G. F. Delacruz	1839	Derham Gluttan	1786	Fred Hibelner	1666
John Delamarre	1894	David Glasville	1647	Charles Hiden	1513
Dave Denney		Thomas Goldsworthy	1548	Arden Hill	1778
Jack Dennis	1642	Wilfred Goodwin	1604	Tom Hodges	
Earl Devore	1667	Martin Gorse	1600	Don Hoekman	1770
Robert Dickinson	2016	F. W. Goss	1537	Jim Hoffman	1650
Glen Dillon	1480	James Gough	1888	Russell Hofvendahl	1579
Jack Dirks	1460	Albert Gounod	1440	Reuben Horn	1656
Jim Dorfman	1455	John Greenwood	1590	Randall Hough	1931
John Druenwald	1650	Raymond Grehawick	1558	Wm. Howell	1599
Harold Duncanson	1656	Peter Grey	2044	Paul Hubbard	1644
		Kon Grivainis	2113	Maj. John Hudson	2248
Bill Earl	1503	Dr. Ben Gross	1884	Dennis Huff	1596
Carl Ehmann	1692	Carl Gruenwald	1450	Henry Huff	1610
Anatole Eiche	1638	V. G. Guins	1612	Lawrence Hughes	1802
Dr. Rolf Eissler	1590	Ake Gullmes	1654	Carl Huneke	1944
Jim Eliason	1530	Ray Gunderson	1620	Daniel Huntington	1523
Ernst Erikson	1571	Albert Gunston	1608	James Hurt	1996
James Evans	1686	Raymond Guzman	1652	Kevin Hurt	1534
Nancy Evans	1533			Shawn Hurt	1469
Floyd Everitt	1386	Gib Hackbarth	1485	Dr. John Hutch	1680
		Glen Hage	1550		
C. Falbo	1762	Erwin Hagele	1550	Debbie Indihar	1501
Tony Falco	1650	Thomas Hattery	1567	Earle Ipsen	1598
George Farly	1924	John Hale	1575	H. Richard Irwin	1988
Sammy Ferris	1500	Bryant Hall	1540	Clifford Isberg	1662
Kenneth Field	1682	Frank Hamaker	1839		
Wayne Fields	1900	Robert Hammie	1980	Robert Jacob	1560
Ralph Fifer	1705	Richard Hansen	1859	Laron Jacobsen	1842
James Finley	1705	Tom Haratani	1650	David Jacobsen	1641
Philip Flax	1558	David Hardy	1810	John Jaffray	2026
Bob Fleuriot	1650	Dana Harmon	1500	Ben Jansen	1647
Van Fong	1824	James Harper	1501	Erik Jensen	1698
Mark Foote	1550	R. E. Harper	1582	Erhard Jesch	

Rose Johns	1501	Allan Liff	1535	Arbin Nelson	1493
John Johnson	1592	A. W. Long	1628	Harry Nelson	1650
Robert Johnson	1550	Jerome Long	1745	Stan Nelson	1496
Stanley Johnson	1881	David Lonie	1623	Roger Newlander	2124
Bill Jones	2100	Lupe Lopez	1677	Ray Ng	1913
Ray Jones	1550	Winston Lowe	1550	Lawrence Nordell	1603
Wm. Joplin	1678			H. J. Norton	1520
Coleman Joyce	1550	Hans Maeger	1576	Michael Nunziata	1540
Leonard Julian	1550	Jim Maguire	1730		
		Waldo Magnuson	1550	Casey O'Brien	1507
Michael Kapchuk	1713	T. E. Makens	1742	Greta Olsson	1701
Rick Karr	1499	Richard Malmstrom	1507	Frank Olivera	1708
Juergen Kasprick	1595	Jan Marckelbach	1651	K. Olwell	1604
David Kent	1858	Jim Marmor	1896	Eric Osbun	2233
Stanley Kilker	1668	Bob Martin	1489	R. C. Otten	1595
Macon Kilpatrick	1566	Roger Martin	1498	Robert Oyler	1603
Sam Kitabayashi	1650	James Mathis	1820		
Don Klinkenberg	1900	Dr. A. M. McCallen	1559	Robert Palasek	1545
Amos Knack	1718	James McCarley	1532	Ron Paradiso	1769
George Koloboff	1738	Roy McCollough	1929	Wm. Parker	1620
Bradley Komsthoeft	1675	Peter McLeney	1626	Frank Parkos	1639
Bill Kondrat	1530	Dr. M. McGee	1612	Wm. Parks	1702
Ted Kopczynski	1627	Claron McGhie	1535	Alex Partansky	1708
Harry Kor	1890	Charles McGinley	1771	Le Grand Parvu	1712
Louis Korens	1709	Jim McIlrath	2008	Dave Pass	1650
Steve Kornher	1877	Art McKenzie	1867	David Paizer	2088
		James McLachlin	1480	Ezid Perini	1550
Carol LaBonte	1404	Don McLeod	1664	Marcus Perry	1862
Peter Lamasney	1818	John McCorney	1849	Don Petersen	1550
Dale Lambert	1528	Ron Meier	1582	Jane Petersen	1550
R. Lambert	1705	Preston Mendell	1600	Earl Phillips	1642
Bruce Lamon	1583	E. S. Mendoza		Gary Pickler	1960
Ralph Lamon	1640	Grant Metcalf	1525	Arthur Pipes	
Lawrence Lane	1348	Elwin Meyers	1821	Wm. Poindexter	1636
Walter Lang	1528	Ronald Miad	1843	Hans Poschmann	1757
Randy Lanouette	1563	Jerry Milk	1501	Joseph Puechner	1506
Paul Laporte	1617	Fred Miller	1597		
Albert Larue	1772	Bill Mingus	1650	Jack Quanstrom	1625
Perry Lavelle	1590	David Mitchell	1498	Mike Quinlivan	1939
Richard Laver	2194	Robert Mitchell	1893	Rudy Quintero	1697
A. Lavergne	1873	Joseph Monori	1957		
Cliff Lechtaler	1550	Wm. Montfort	1841	Aart Rackwitz	1766
Anthony Lee	2031	Charles Morell	1550	Harry Radke	1577
Gene Lee	1566	Martin Morrison	1481	Isham Bailey	1655
Richard Lee	1720	Elmo Mugnani	1657	John Ranelletti	1650
C. H. Leete	1724	Saleh Mujahed	1670	Ted Reed	1650
Panos Lekas	1653	Chris Murray	1586	Dennis Reich	1617
James Lemke	1559			Dr. Norman Reider	1804
Leo Leonard	1502	Robert Nace	1673	Delbert Richards	1472
Francis Lewis		Kenneth Nall	1597	H. T. Richards	1723
Donald Lieberman	1787	Art Neal		Jay Richards	1509
Janice Lieberman	1533	Marvin Neiman	1548	Reg Rickey	1732

Manuel Rivera	1570	Willard Sprague	1883	Harold Walsh	1408
Royal Robbins	1678	Frank Steenhard	1735	Arthur Wang	2185
Joseph Roberts	1808	Wm. Steinberg	1883	Jack Warner	1506
George Roust	1686	Wm. Stevens	1826	Mark Watson	1895
Everett Rowe	1573	Chris Stewart	1603	Norris Weaver	2314
Gilbert Roy	1693	Roger Stewart	1460	Gary Weber	1954
Eric Rubsanen	1535	Kenneth Stone	1813	Mike Weber	1812
		Mike Sullivan	1557	W. Weber	1534
Bob Saccuzzo	1487	Don Sutherland	2225	Bill Weekley	1509
Dennis Saccuzzo	1894	James Sutherland	1696	Johann Weiler	1583
J. Salna	1890	Bill Switzer, Sr.	1550	Peter Weintraub	1535
David Sanks	1494	George Syty	1706	Frank Weinberg	1752
Vince Sanomasimo	1550	Mr. Szilagy	1950	Waldo Weissenborn	1550
R. Santiago	1903			Paul Westerline	1499
Paul Saunders	1534	E. G. Tapia	1679	Don Western	1500
J. Schlotterbeck	1499	Milo Terry		Gene Whitt	1700
Victor Schmidt	1500	George Teslawski	1804	Thomas Wickham	1508
Ridgeley Schneider	1716	Wm. Thomas	1744	Norman Wild	1737
Fred Schoene	2011	Dave Thompson	1551	Roy Willis	
Arnold Schulz	1647	Frank Thompson	1470	Craig Williams	1550
Anita Schumacher	1564	George Thompson	1639	James Willows	1691
J. R. Scott	1588	Lawrence Thompson	1680	Gary Wilson	1870
Ralph Segura	1513	Rik Thompson	1564	John Wilson	1534
Robert Sharp	1674	Jim Tilden	1495	Larry Wilson	1744
Bob Shean	2135	Kenneth Travers	1685	R. E. Winkelman	1772
Jimmy Shearer	1650	Robert Trenberth	1892	Paul Winkler	1550
Tom Shoemaker	1750	Sandor Tresz	1647	Dr. Joseph Wissel	1642
Richard Shorman	1991	James Trimmingham	1576	Harold Woest	1608
Eddie Silva	1530	Leonard Trottier	1618	Curtis Wong	1535
Saul Silven	1761	Ben Tucker	1566	P. K. Wong	1698
Dr. James Slagle	1674	Leroy Turner	1694	Greg Wooley	1626
Sam Sloan	2099	Douglas Turney	1512	Gregory Wren	1820
Margaret Sloane	1527	Harold Tweeden	1667	George Wright	
John Small	2038	Don Twigg	1650	Warren Wylie	
Nora Smiriga	1604				
Bob V. Smith	1544	Jack Ulrich		Ken Yamamoto	1851
Dennis Smith	1512	James Ulrich	2120	Ricky Yaranon	1697
Douglas B. Smith	1752	Robert Uomini	1537	Kent Yarnell	1498
Joel Smith	1652	Keith Underwood	1532	Posheng Yen	1637
Norman Smith	1645				
Steven Smith	1387	Charles Vail	1604	Norm Zadeh	1637
Dal Smullin	1786	Frank Valenzuela	1638	Joe Zichwic	1577
Dan Sobol	1750	Jim VanBoven	1550	Ed Zigurs	1531
Ben Sobotka	1498	Zeb Vancura	1757	R. L. Zilm	1551
A. Socchi	1499	Paul Vayssie	1681	John Zimmerman	1460
Emil Solve	1638	John Verhagen	1734	Nancy Zimmerman	1432
Armando Soto	1550	Z. Vybiral	2130	Walt Zimmerman	1520
Jay Spingarn	1762			Paul Zink	1634
Neil Spingarn	1582	J. Wallan	1808	George Zonoff	1628

C.F.N.C. OPEN
CHESS CHAMPIONSHIPS

Incorporating the California State Qualifier's
Tournament

- DATE.....Saturday & Sunday, January 27th & 28th, 1968
PLACE.....Palm Room, Berkeley Y.M.C.A., 2001 Allston Way,
Berkeley 4, California - Phone 848-6800.
ELIGIBILITY....Open to all chess players who are or will be-
come members of Chess Friends of Northern
California. Membership includes a subscription
to Chess In Action, which is issued quarterly.
PRIZES.....The over all winner will have his entry fee plus
expenses for the California State Championships
paid by C.F.N.C. - plus trophy - plus title
- "A" Division: 1st \$25.00 plus plaque.
 2nd plaque.
"B" Division: 1st \$20.00 plus trophy
 2nd plaque.
"C" Division: 1st \$15.00 plus trophy
 2nd plaque.

TYPE.....Five round Swiss System Tournament.

ROUND SCHEDULE. Round 1 Sat. Jan. 27th 12:00 noon
 Round 2 Sat. Jan. 27th 3:30 pm
 Round 3 Sun. Jan. 28th 9:00 am
 Round 4 Sun. Jan. 28th 12:30 pm
 Round 5 Sun. Jan. 28th 4:00 pm

ENTRY FEE.....\$5.00 for C.F.N.C. members
 \$8.00 for non-members

REGISTRATION...From 10:00 am to 11:30 am on Saturday, Jan. 27th.

TOURNAMENT

DIRECTOR.....George Koltanowski, International Master
All decisions by the Tournament Director
shall be final.

NOTE.....BRING YOUR CHESS SET AND CLOCK, IF AVAILABLE.

ADVANCE REGISTRATION: (Make checks payable to Virginia McGinley)

TO: Virginia McGinley
CFNC Treasurer

2763 Chelsea Dr.
Oakland 11, Calif
Phone 531-0358

PLEASE ENTER ME IN THE C.F.N.C. OPEN CHESS CHAMPIONSHIPS

NAME _____ PHONE _____ RATING _____

ADDRESS _____ CITY _____ ZIP _____

Enclosed is \$5.00 for C.F.N.C. member _____

Enclosed is \$8.00 for non-member _____

if unrated check here _____

GAMES DEPARTMENT

2. The Speculative Sacrifice: The following game was played between Paul Zink (San Bruno third board) and Bruce Allen (LERA B third board) in a CFNC league match played on 27 November 1967. In this game, Black utilizes the speculative sacrifice to try to force the win of the game. If White accepts the initial bishop sacrifice, he will be a piece ahead, but will have to fight off the ensuing attack on his king. If White refuses the sacrifice, his king will be exposed to attack but to a lesser degree. Black, on the other hand, sacrifices a bishop, a knight (?), and finally a rook for the purpose of exposing the White king to attack; he sees no forced win, but he is willing to risk the loss of the game in return for the possibilities of obtaining a winning attack. White's plan will be to try and break the attack, for if he can break the attack he should win easily.

This is not a game between two international grandmasters, but the tension and excitement was just as high as if Bobby Fischer and Boris Spasski were actually making the moves (ask the players!): this is one of the beauties of chess. And now to the moves that were actually played by two CFNC B players in a critical game that decided the outcome of a key match between two outstanding CFNC teams.

White: Paul Zink Black: Bruce Allen

1. P-Q4	P-QB4
2. P-K3	P-K3
3. P-QB3	P-Q4
4. P-QN3	N-KB3
5. B-Q3	N-B3
6. KN-K2	B-Q3
7. O-O	

Ordinarily a player castles to place his king in a safe place, and Black's next move must have been quite a shock to White.

7.	BxPch
8. K-R1	

White declines the sacrifice. After 8 KxB N-N5ch, White must choose between 9 K-N1 and 9 K-N3. After 9 K-N1 Q-R5, 10 R-K1 QxPch, 11 K-R1 P-K4, Black appears to have an irresistible attack; and after 9 K-N3 P-KR4, 10 P-KB3 (what else?) P-R5ch, then 11 K-R3 looks bad (because of P-K4 and Black threatens NxP dbl ch winning the White queen) but the alternate 11 KxN allows Black to force mate with 11 P-K4 dis ch, 12 B-B5 BxBch, 13 KxB Q-Q2ch, 14 K-N5 P-B3ch, 15 K-N6 R-R3 mate.

8.	N-KN5
9. P-N3	

Black was threatening the devastating 9 Q-R5 (for example 9 P-B3 Q-R5, 10 PxB B-N6 disch, 11 K-N1 Q-R7 mate). White could also have played the move 9 N-B4 so as to answer 9 Q-R5 with 10 N-KR3, but Black could do better with 9 BxN, 10 QxN (if 10 PxB Q-R5ch, 11 K-N1 Q-R7 mate) P-K4! 11 Q-R5 (White must prevent Q-R5ch) P-KN3! and White must lose his queen or submit to Q-R5ch and Q-R7 mate. The text move (9 P-N3) prevents 9 Q-R5 and also appears to seal the fate of Black's bishop on KR7.

9.	Q-B3
10. K-N2!	

Black was threatening 10 Q-B6 mate.

10. P-K4

Threatening 11 P-K5 with the further threat of 12 PxB or 12 Q-B6ch, 13 K-R3 NxB disch and mate next move.

11. PxP Q-R3
12. N-B4 P-KN4

If Black tries 12 B-N8, then 13 N-KR3 seems to hold the position (both 13 KxB and 13 RxB allow Black to mate the White king).

13. P-K6

White threatens 14 QxN. If Black plays 13 BxKP, then 14 NxB QxN, 15 Q-B3 QN-K4, 16 Q-B5 and White has broken the attack.

13. PxN
14. KPxP?

White misses 14 QxN which should win for him. If 14 BxKP, 15 Q-KR4 and White has broken the attack and is a piece ahead. If 14 QN-K4, 15 QxBP QxQ, 16 KPxQ NxB, 17 PxPch KxP, 18 KxB.

14. Q-R4

Black avoids 14 BxKP, for then 15 P-B5 threatens both 16 BxQ and 16 PxB. Also, if Black tries 14 B-N8, then 15 QxN is quite good enough.

15. R-K1 PxP

Here if 15 B-N8, 16 RxB Q-R7ch, 17 K-B3 QxBPch, 18 KxN BxPch, 19 P-B5 R-N1ch, 20 K-R3 BxPch, 21 BxB QxBch, 22 P-N4 and White has broken the attack. Also, if 15 BxNP, 16 KxB! (16 PxB? Q-R7ch, 17 K-B3 QxBPch, 18 KxN R-N1ch, 19 K-B5 QxNP, 20 Q-R5 R-N3! 21 any N-K2ch 22 K-K5 RxB mate) 16 Q-R7ch, 17 KxN Q-N7ch, 18 K-R4 R-KN1, 19 R-K3 or R-KR1 and White has broken the attack.

16. P-B5 O-O!

White was threatening to get strong counter play with 17 PxP, but now Black can meet that move with 17 RxBch, 18 K-R1 BxP disch, 19 K-N1 Q-R7 mate.

17. R-R1 QN-K4
18. B-K2 QxP

Threatening 19 QxBPch, 20 K-R3 QxNP mate.

19. P-KB4 Q-N3

White cannot play 20 PxN because of the reply 20 R-B7ch, 21 K-R3 Q-R4 mate.

20. RxB NxR
21. KxN Q-R3ch
22. K-N2 N-N3

Is this an intentional speculative sacrifice of the knight for the last remaining pawn protecting White's king? If so, does Black have enough men left to carry out a mating attack?

23. P-B5

Threatens both 24 BxQ and 24 PxN.

23.	N-R5ch
24. PxN	QxP
25. B-N4	

White has accepted the sacrifice, and is trying desperately to get some protection in front of his king.

25. P-KR4?

Black misses the straight-forward moves 25..... R-B2 and 26..... R-N2.

26. BxP	PxP
27. QxPch	

White suddenly gets some welcome counterplay!

27.	K-R2
28. B-B3	P-N3!

Pondering on how to develop his bishop, Black suddenly sees that 29 QxR loses the queen after 29..... R-N1ch 30 K-B1 B-R3ch. White now moves his queen so he can play BxR.

29. Q-K5	R-N1ch
30. K-B1	B-R3ch
31. P-B4	Q-R6ch
32. K-B2	QR-K1
33. Q-B4	

Black has forced this position, and the White king is indeed in a precarious spot. Exposed and unable to move, it looks like any check may be a checkmate. But there is another side to the coin: the Black queen is stalemated! There is not a single square it can move to without being captured for nothing, except for the square KN5 where it is traded for a bishop. How is Black to proceed? White's queen side is still undeveloped, and if Black gives White enough time to develop his queen-side pieces, White will win. Black's answer is to offer the speculative sacrifice of a rook. See the front cover for this position.

33. R-N8

White is in serious time pressure and decides not to accept the rook sacrifice. After 34 KxR R-K8ch, 35 K-B2 Q-B8ch, 36 K-N3 Q-N8ch, 37 B-N2 B-N2, 38 Q-B7ch K- any, 39 QxB it would appear that Black is lost. We leave it to the reader to evaluate this position and determine if this speculative rook sacrifice is sound. After declining the sacrifice, White lost rapidly as follows:

34. Q-R6ch	QxQ	40. B-R4	BxP
35. BxQ	R(1)-K8	41. K-B4	P-N4
36. B-K3	RxN	42. PxB	RxB
37. RxR	RxR	43. BxP	RxPch
38. B-B6	R-N7ch	44. Resigns	
39. K-N3	RxP		

J. E. Hurt

CHESS FRIENDS OF NORTHERN CALIFORNIA
2763 CHELSEA DRIVE
OAKLAND, CALIFORNIA 94611



Martin Morrison
8009 Fontaine St
Oakland, Ca 94605

KOLTY TRIBUTE

THE FIRST GOLD CFNC LIFE MEMBERSHIP CARD, WITH APPROPRIATE ENGRAVING, WAS PRESENTED TO GEORGE KOLTANOWSKI AT THE OCTOBER CHESS FRIENDS TOURNAMENT IN BERKELEY. AS FOUNDER AND FIRST FIELD DIRECTOR, KOLTY IS THE ONLY CFNC MEMBER WITH A CONTINUOUS ASSOCIATION WITH CFNC OF MORE THAN FIFTEEN YEARS. KOLTY'S DARING AND CONFIDENCE COMBINED TO PUT FORTH WHAT WAS THEN A MOST RADICAL BASIC POLICY: A PHILOSOPHY OF ENCOURAGEMENT TO AND FOR THE BEGINNING CHESS PLAYER AND THE AMATEUR CHESS PLAYER. KOLTY IS RETICENT ABOUT THIS SINGULAR ACCOMPLISHMENT AND CFNC MEMBERS HAVE COME TO TAKE FOR GRANTED THE ALMOST MONTHLY CHESS ACTIVITY ENJOYED BY THE MEMBERSHIP.

KOLTY AND HIS LOVELY WIFE LEAH ARE AN INTERNATIONAL CHESS TRADITION SHARED BY CFNC. HOW GREAT OUR GRATITUDE; HOW SMALL OUR TOKEN! THE HERITAGE OF CONTINUING SUCCESS MAY BE BEST EXEMPLIFIED BY CFNC WHEN IT REMAINS FAITHFUL TO THE KOLTY DICTUM: "PROMOTE CHESS AT ALL LEVELS AND ENCOURAGE THE BEGINNER."

WE THANK YOU, GEORGE KOLTANOWSKI.

CHUCK MCGINLEY