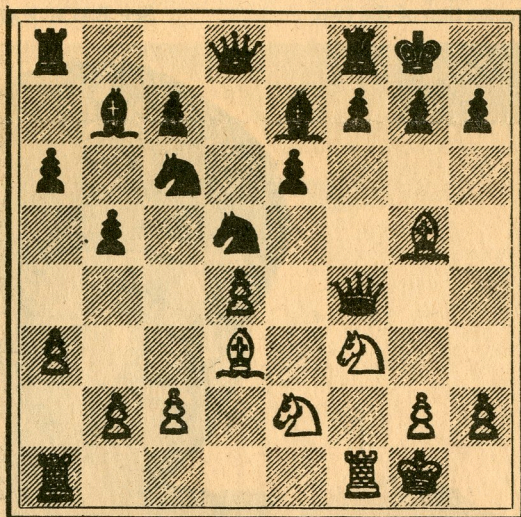


Chess

By Gary Pickler

Mon. Jan. 4, 1971 Daily Democrat

(Editor's note — Following is the first of a series of chess columns by Gary Pickler, a UC-Davis student who is a U. S. chess expert and rated among the 400 best chess players in the U. S. Gary teaches chess classes for the Davis recreation department. He is studying for his bachelor's degree in psychology at UCD. In 1969, he was Davis and Western Intercollegiate chess champion.)



White to play and win. Solution below.

Blitzkreig! Black turns rapid development and superior mobility into a terrific king-side attack. Sharp tactics crumble white's defenses, then a brilliant queen sacrifice enables a dazzling three-move checkmate.

White: Lignell

Black: Niemala

Finland, 1943

| | | | |
|----------|----------|--------------|-----------|
| 1. P-Q4 | P-Q4 | 11. 0-0 | N-K7ch(d) |
| 2. P-QB4 | P-K4(a) | 12. K-R1 | 0-0-0(e) |
| 3. PxKP | P-Q5 | 13. P-QN4 | P-KR4 |
| 4. N-KB3 | N-QB3 | 14. Q-N3?(f) | P-R5 |
| 5. QN-Q2 | P-B3(b) | 15. PxP | N-K5!(g) |
| 6. PxP | NxP | 16. NxN | BxN |
| 7. P-QR3 | B-KN5 | 17. N-N5 | QxN!(h) |
| 8. P-KN3 | Q-K2! | 18. PxQ | RxPch! |
| 9. B-N2 | P-Q6!(c) | 19. KxR | B-Q3ch |
| 10. P-K3 | N-Q5! | 20. K-R1 | R-R1 mate |

(a) The Albin Counter Gambit, a dangerous attacking weapon.

(b) Sacrifices the pawn for quick action.

(c) Well played!

(d) Obtains a strong post for his knight.

(e) Already black has wrested away the initiative.

(f) A fatal mistake. 14. P-KR4 was necessary.

(g) Black's attack is irresistible.

(h) Forces mate.

The U.C. Davis Chess Club has just finished its 24th rated tournament. First was this author with 4½/5. Second with 4/5 were E. Leitis and W. Hamaker. D. Napoli, D. Olmsted, and F. Garosi all had 3½/5.

The 25th Davis Rated Tournament will begin on Monday, Jan. 11 at 7 PM in the Memorial Union Games Area. All are welcome!

Solution to problem: 1. BxPch!, KxB; 2. Q-R4ch, K-N3 (if 2...K-N1; 3. BxB, QxB; 4. N-N5 wins) 3. BxB, QxB; 4. Q-N4ch, K-R3; 5. Q-R3ch, K-N3; 6. N-R4ch, K-N4; 7. N-B5, Q-Q2; 8. Q-R4ch K-N3; 9. Q-N4ch, K-B3; 10. QxP mate.