

After a Hot Round of Chess



Stasch Mlotkowski, Coast champ, at the right shaking hands with G. G. G. Patterson of Hollywood, whom he had just defeated in the first game played on the mammoth chess board on the Llano de Beverly tract.

WITH THE CHECKER PLAYERS

NOTES AND PROBLEMS

PUBLICATIONS IN THE REALM OF CHECKERS

BY JOHN DOUGHERTY

August 19, 1923.

Chess and Checker Headquarters, 820 Union League Building, corner of Second and Hill streets. All chess and checker players invited to join. For further information regarding the club, see or write the secretary, D. H. Bowes, at the clubrooms.

All communications intended for this department should be addressed to John Dougherty, The Times, Los Angeles, Cal.

AMONG THE FANS

The local players are anxious for another chance at the Southern California checker team, so if either the Long Beach or Pasadena club desires to stage the affair at their clubroom — "Barkus is willin'." It might be well to hold the next match at the Tourist Club in Pasadena on Saturday afternoon, September 8. Messrs. O'Brien and Holcomb please take notice and communicate with the editor. I will also suggest that number of players to be on each team be definitely decided on beforehand. Any number up to twenty will be all right with the Los Angeles team.

Stasch Mlotkowski, the Pacific Coast chess champion, will play all comers this afternoon on the mammoth chess board located on the Llano de Beverly tract at Wilshire Boulevard and Doheny Drive.

The chess players should show that chess is a real and interesting game by flocking out there in such large numbers that it will cause the natives to "sit up and take notice."

Newell W. Banks's new magazine, entitled Morris-Systems Checkerist, is now in the hands of subscribers. It contains sixteen pages of interesting news and games. A feature that will interest the average player is the "Beginners Section" in which Mr. Banks in this issue select the Old Fourteenth opening and devotes three pages to it. Next issue some other opening will be given.

The subscription price, \$1.50 per year, is rather low but if the publishers can make a success at that price, so much the better for us poor checker players. Send subscriptions to Morris-Systems Publishing Company, 1718 Brush street, Detroit, Mich.

MAMMOTH CHESS BOARD

Out on the Llano de Beverly tract at Wilshire Boulevard and Doheny Drive, the Middleton and McConnell real estate firm have placed a sixteen-foot chess board, with pieces to correspond, which the public is invited to use at any time. The board is covered with an attractive awning and comfortable seats are provided for the spectators.

Last Sunday S. Mlotkowski, Pacific Coast champion, and G. S. G. Patterson, a near champion, played the first game on this board, which resulted in a win for the champion.

Playing on this board one gets the fresh air and exercise of an outdoor sport while enjoying the diversion of a scientific indoor game. It will be worth your while to go out and see this board, and if you care to play you are "as welcome as the owers in May."

SOLUTIONS TO PROBLEMS

PROBLEM NO. 760

By C. Hafter.

Black—4, 5, King 3.
White—29, King 11.
Black to play and win.

8-8	7-11	9-14	11-4	16-19
11-7	5-9	25-22	12-16	8-11
8-13	29-25	4-8	4-8	14-18

B. wins.

PROBLEM NO. 761

By A. McHardy.

Black—2, 3, Kings 14, 20.
White—12, 16, Kings 1, 11.
Black to play and win.

14-18	5-9	2-6	1-5a	14-18
-------	-----	-----	------	-------

1-5	23-19	5-1	10-14	8-14
18-23	9-5-1	6-10	5-9	19-15

B. wins

Black—5, King 23.

a—1-6, 20-24, 6-15, 19-10, 11-7, 10-15, B. wins

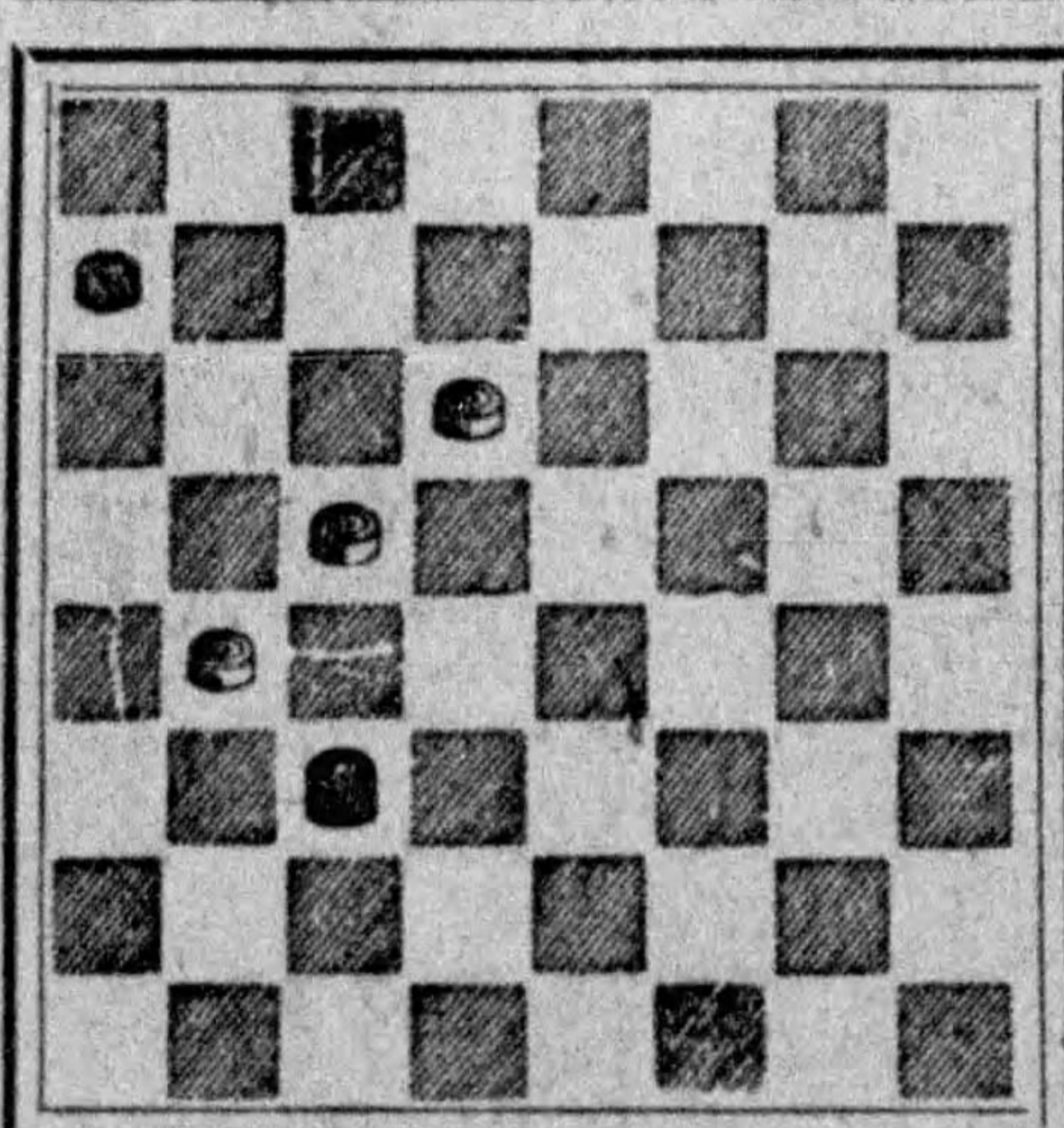
VARIATION 1

9-14	14-17	17-13	13-9	9-8
2-6	6-9	9-14	14-18	19-15

B. wins

PROBLEM NO. 762

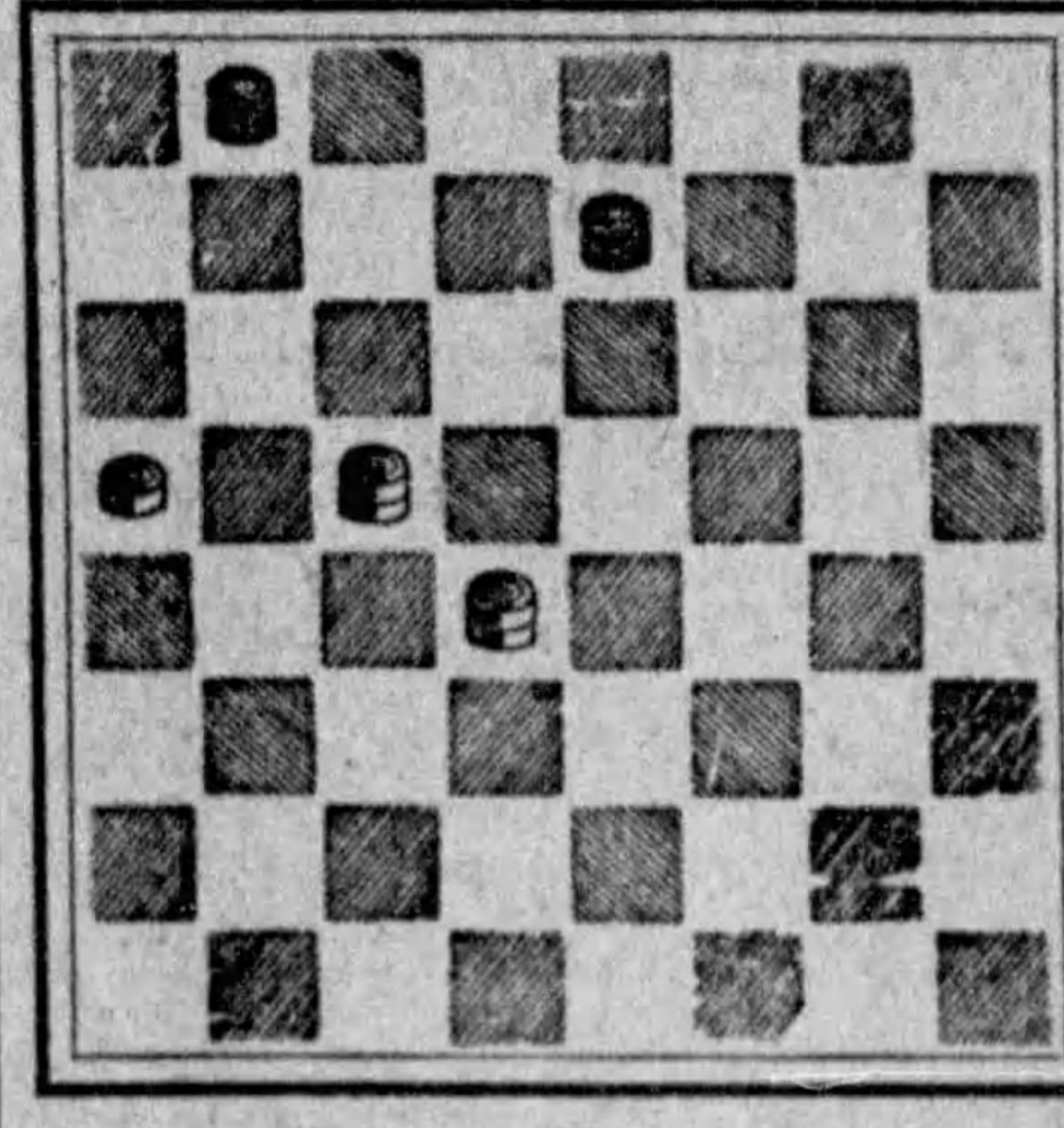
White—10, 14, 17.
White to play and win.



White—10, 14, 17.
White to play and win.

PROBLEM NO. 763

By J. R. Yeomans.
Black—Kings 1, 7.



White—13, Kings 14, 18.
White to play and win.

LOS ANGELES TIMES GAME, NO. 1516

Kelso-Exchange.

The two following games were played last week in the local clubrooms.

Black—J. L. Wilson.		White—M. L. Davis.		
10-15	29-25	15-24	30-26	16-23
22-18	6-10	20-11	1-5	22-18
15-23	23-19b	7-16	26-22	23-18
25-18	8-11	28-19	7-11	17-14
11-15	25-21	3-7	31-26	29-30
18-11	14-18	21-17	11-16	14-10
8-15	27-23	2-8	19-15	30-26
21-17	18-27	23-18	10-19	10-1
4-8a	32-23	16-23	18-15	26-23
17-13	11-16	26-19	19-23a	13-6
9-14	24-20	5-9	26-19	23-14

Drawn

a—Not as strong as 9-13.
b—Varies from the Encyclopedia, which gives play by 19-24, 23-18, 24-27, 26-23, 27-31, 15-10, 6-15, 18-11, etc.

LOS ANGELES TIMES GAME, NO. 1517

Dundas.

Black—Dougherty.		White—Davis.		
12-16	10-19	10-14	4-11	14-18
24-20	18-15	15-10	31-27	16-11
8-12	11-18	14-23	1-6	10-14
28-24	22-15	24-15	27-23	29-25
3-8	13-23	9-14	6-10	14-17
23-18	25-18	26-19	30-26	25-21
9-13	7-10	8-11	11-15	18-22
21-17	32-28-1	15-8	19-18	21-14
16-19	5-9	6-24	12-19	22-31
24-15	27-24	28-19	23-16	Drawn

VARIATION 1

Black—LeClere.		White—Dougherty.		
27-23	6-10	15-8	19-15a	28-24
5-9a	25-29	1-10	27-23	19-28
23-18	2-7c	25-22	4-8	26-8
10-19	18-15	8-11	23-18	12-19
32-28	9-14	31-27	14-23	3-12

W. wins

a—Play has been published in previous issues on 10-14 and 19-24.
b—If 11-15, 27-23, 19-24, 28-19, 15-24, 22-18, 12-19, 18-9, W. wins.
c—This loses; 19-14, 18-9, 1-5, looks good for a draw.

LOS ANGELES TIMES GAME, NO. 1518

Cross.

Contributed by Raymond P. Tipton, Columbia, Mo.

Black—A. Friend.		White—R. P. Tipton.		
11-15	6-9	8-11	7-10	31-26
23-18	19-15	27-23	24-20	22-18
8-11	10-19	11-16a	2-7	26-23
27-23	17-10	30-26	18-15	18-15
4-9	7-14	1-5b	14-18	9-14
23-19	24-15	28-24	15-6	15-10
9-14	18-23	16-20	18-27	14-18
18-9	26-19	22-18	6-2	18-7
5-14	11-18	20-27	7-11	10-23
23-17	25-22	31-24	9-7	16-11
15-18	18-25	5-7	27-31	23-16
32-27	29-22	26-22	7-16	11-15

W. wins

a—This loses. 3-7 draws easily.
b—Varies from L. A. Times game, No. 900, variation 1, at 11th move, but seems no better than the 2-7 played there.