

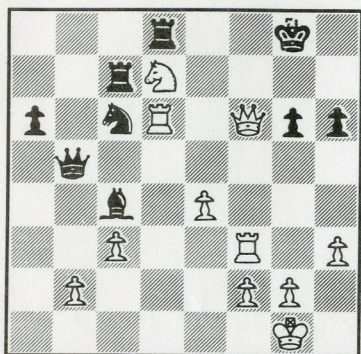
FREMONT CHESS CLUB NEWSLETTER

FREMONT CHESS CLUB MEETS EVERY FRIDAY FROM 7 TO 11 PM. AT FREMONT COMMUNITY CHURCH (LEFT SIDE ENTRANCE), 39700 MISSION BLVD. NEAR STEVENSON.

MAILING ADDRESS: HANS POSCHMANN, 4621 SENECA PARK AVE. FREMONT, CALIFORNIA 94538
EDITOR: DAN MCDANIEL

APRIL 1983

ALEKHINE - KOLTANOWSKI
London 1932



White to move and mate in four

NYAH, NYAH !!

Kenny Fong	2244
Jan Olsson	1952
Stuart Thorsby	1830
Ed Sheffield	1807
Hans Poschmann	1745
Dan McDaniel	1706
Paul Friedrich	1683
Gerry Delacruz	1651
Danny Miranda	1625
Ken Queen	1526
Bob Pellerin	1497
George Hahn	1465
Dick Chandler	1461
John Brand	1459
Dan Brinkman	1436
Mike Sweeney	1403
Nelson Espiritu	1185
Om Tiku	Unr
Carl Tonge	Unr

And the usual gang of groupies.
Of course you realize, these ratings are as of the end of December, and we've all improved since then.

no charity given here

Ignoring the pleas of his friends and family, Nelson Espiritu decided not to give to his favorite charity, and as a result became the club's latest pro.

By finishing with a 3-1 mark, Nelson collected \$40.00 as the best E player in the recent LERA tournament.

He joins Jan Olsson, Hans Poschmann, Stuart Thorsby and Dan McDaniel in the select, the few, the lucky.

CAL TEAM CHESS

The Cal Team Chess Tournament will be held at the Santa Clara Chess Club on July 30-31.

There will be four players and two reserves per team, with as many teams entered per club as desired. Cost is \$10.00 per team. See Hans for details.

WHAT, MORE MONEY?

June marks the second and final installment of your club dues. Find a dotty rich uncle who will give you \$6.00 and free your financial burdens for the year.

The editor will publish your game too, but only if you give him a copy of it. It should be semi-legible and not have too many errors in the move order. It also helps to have influence.

SOLUTION TO THE PUZZLE

30) Ne5! Rdc8, 31) Nc6 (at this, black resigned) Rc6, 32) Rd8+ Rd8, 33) Qd8+ Kg7, 34) Qf8 mate.

games to laugh by

Usually we publish stirring victories, but John insisted on this:

White: Marvin Gilbert (1746)
Black: John Brand (1459)

- | | | |
|----|------|-----|
| 1) | e4 | e5 |
| 2) | Nf3 | Nf6 |
| 3) | d3 | Nc6 |
| 4) | g3 | Bc5 |
| 5) | Bg2 | d5 |
| 6) | Nbd2 | Bg4 |
| 7) | O-O | O-O |

Both players believe in rapid development.

- | | | |
|-----|-----|------|
| 8) | c3 | Qd7 |
| 9) | Re1 | Rad8 |
| 10) | Qc2 | Bh3 |

Hoping to eliminate the defender of the white squares.

- | | | |
|-----|-----|------|
| 11) | ed | Bg2 |
| 12) | dc! | Qh3 |
| 13) | Ne5 | Ng4? |

This just forces a trade that helps white's game. Better is Bc6, and if Nc6, then Ng4 threatening bad bongos.

- | | | |
|-----|-----|-----|
| 14) | Ng4 | Bc6 |
| 15) | Ne4 | f5 |
| 16) | Ne5 | fe |
| 17) | d4! | |

White keeps slowly expanding, while bettering his position. Black says he must go in for crazier complications.

- | | | |
|-----|-----|-------|
| 18) | fe | Bd6 |
| 19) | e4! | Bb5?? |

The bishop threatens nothing here.

- | | | |
|-----|------|------|
| 20) | Qb3+ | Kh8 |
| 21) | Qb5 | Rf2? |

Being a piece and two pawns down, black says have a rook too. By this he wins back a pawn.

- | | | |
|-----|-------|------|
| 22) | Kf2 | Qh2+ |
| 23) | Kf3 | Rf8+ |
| 24) | Bf4 | g5 |
| 25) | Ng6+! | Kg7 |

If hg, then Rh1 wins the queen.

- | | | |
|-----|-----|------|
| 26) | Nf8 | Qh5+ |
| 27) | Kg2 | Bf4 |

gf? loses the queen again, dummy.

- | | | |
|-----|------|-----|
| 28) | Ne6+ | Kf7 |
|-----|------|-----|

29) Nf4

Black, realizing it is impossible to mate using only the queen, and having no more pieces to sac, resigns. After viewing the remains, we think John should have tried for a stalemate.

* * * * *

From LERA

White: Nelson Espiritu (1185)
Black: John Antoun (1317)

- | | | |
|----|-----|-----|
| 1) | d4 | d5 |
| 2) | Nf3 | Bg4 |
| 3) | e3 | Nf6 |
| 4) | c4 | e6 |
| 5) | Nc3 | |

Stronger is Qb3, eliminating the pin and threatening to win a pawn.

- | | | |
|----|-----|-----|
| | | Be7 |
| 6) | Be2 | dc |
| 7) | O-O | a6 |
| 8) | Bc4 | b5 |
| 9) | Bd3 | c6? |

Weak, weak, weak. Black must get in c5 to free his game.

- | | | |
|-----|-----|------|
| 10) | b3 | Nd5 |
| 11) | Bb2 | Nc3? |

Helping white to centralize while removing his own pieces.

- | | | |
|-----|-----|------|
| 12) | Bc3 | O-O |
| 13) | Rc1 | Bd6 |
| 14) | Be2 | Bf3? |

Sigh. Not only giving his opponent the two bishops, but making the c pawn fatally weak.

- | | | |
|-----|-----|----|
| 15) | Bf3 | f5 |
|-----|-----|----|

Black loves backward pawns.

- | | | |
|-----|-------|-----|
| 16) | Re1 | Rf6 |
| 17) | h4? | g5 |
| 18) | hg | Rg6 |
| 19) | Kf1 | Qg5 |
| 20) | d5! | b4 |
| 21) | dc | Bc7 |
| 22) | Bb4 | f4 |
| 23) | Rc5! | Qf6 |
| 24) | Bc3! | Qe7 |
| 25) | Qd4!! | |

White has played this last series with great vigor.

- | | | |
|-----|------|------|
| | | e5 |
| 26) | Qc4+ | Re6 |
| 27) | ef | Nc6? |
| 28) | Rc6 | Rf8 |
| 29) | Re6 | Qf7 |
| 30) | Bd5 | Qf4 |
| 31) | Rf6+ | |

Black resigns since the queen falls, while the king isn't too far behind. A fine attack from the 16th move onward by white.

More LERA

White: Jan Olsson (1952)
 Black: Don Jones (1996)

- 1) d4 Nf6
- 2) c4 c5
- 3) d5 e6
- 4) Nc3 ed
- 5) cd d6
- 6) e4 g6
- 7) f4 Bg7
- 8) Nf3 O-O
- 9) Bd3 a6
- 10) a4 Re8
- 11) O-O Nbd7

The first time black deviates from the book, he goes wrong. The bishop to g4, then the knight comes out.

- 12) Re1 Qc7
- 13) Nd2 Rb8
- 14) Qc2 b6
- 15) Rb1 Bb7
- 16) Bc4 Re7
- 17) Qd3! Qc8

Black is forced to refrain from doubling his rooks in order to protect his pawn.

- 18) Nf3 Qe8
- 19) Bd2 Ra8

Further undevelopment.

- 20) Re2 Qb8
- 21) Rbel Re8?
- 22) e5! de
- 23) fe Ng4
- 24) e6 fe
- 25) de Bf3
- 26) ed+

Black resigns as everybody must die.

* * * * *

White: Dan McDaniel (1706)
 Black: Eric Finkelstien (1584)

- 1) d4 Nf6
- 2) Nf3 e6
- 3) e3 b6
- 4) Bd3 Bb7
- 5) Nbd2 Nc6?

This is a mistake which will be apparent later on.

- 6) a3 Be7
- 7) c4 d5
- 8) b4 Qd7
- 9) Bb2 a6

Black is caught betwixt and between as he is afraid to castle king-side and face the bishops, and hestiates on the queenside fearing a pawn storm. So he vacillates and is lost.

- 10) Qe2 Ng4
- 11) h3 Nf6
- 12) O-O h6?
- 13) Racl Nh7?

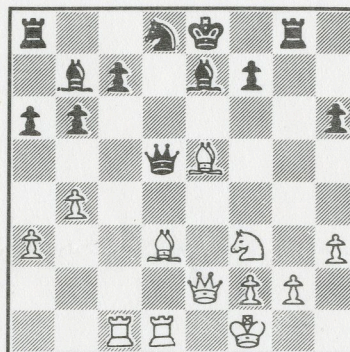
Black is still waiting to see which way the wind blows.

- 14) Rfd1 Ng5
- 15) cd Qd5?
- 16) e4 Qd6
- 17) d5! Nf3+
- 18) Nf3 ed
- 19) ed

Black tries to simplify, but just opens lines on his king instead.

- 20) Bg7 Nd8
- 21) Be5 Rg8
- 22) Kf1! Qd5

Getting out of the pin. White's position is overwhelming using simple developing moves.



- 23) Be4 Qe6
- 24) Qd3 c6?
- 25) Bf5! Qd5
- 26) Bd7+!! Ke7

Who cares? The rook is immune for the next five moves.

- 27) Qf5 Qb5+
- 28) Kgl Rg6

If Kd7, Qf5+ wins the queen. If Kf8, Bd6+, 27) Qc3+ wins the queen.

- 29) Ng5 hg
- 30) Rel Ne6
- 31) Rcd1 Rd8
- 32) Be6 Rd1
- 33) Qf7+

If black takes the rook, then Bd6 mate.

- 34) Rd8 Rd1+
- 35) Qf8 mate.

And black resigns. The finish was forced anyway. If 32)...Rd6, 33) Bf6+! king any, 34) Rd8 mate. Instead the text would be 33)...Kd8, 34) Rd1+ Qd5, 35) Qf8 mate. No need to be too greedy with three white pieces hanging! A nice attack.