

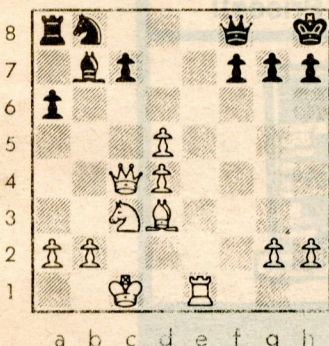
Chess



By Frisco Del Rosario

MORPHY-MONGREDIEN

White to play and win.



PAUL MORPHY

Born in New Orleans in 1837, Morphy was arguably the first American to be considered the finest player in the world. He beat Adolf Anderssen, an unofficial world champion, in an 1858 match, but Howard Staunton, also a claimant to recognition as the top player of that time, rather avoided Morphy, and the two never met formally over the board. (Morphy did better Staunton in two consultation games, however, where the players had to consult with allies.)

Like no player before him, Morphy demonstrated the principles of central control and rapid development to be necessary to win chess games.

In legend, Morphy played this game in an opera box before curtain.

Paris 1858

W: Paul Morphy

B: Duke of Brunswick & Count Isouard

Philidor's Defense

1.	e4	e5	10.	Nb5	cb
2.	Nf3	d6	11.	Bb5	Nbd7
3.	d4 ¹	Bg4	12.	O-O-O ⁷	Rd8
4.	de	Bf3 ²	13.	Rd7!	Rd7
5.	Qf3	de	14.	Rd1	Qe6 ⁸
6.	Bc4	Nf6	15.	Bd7 ⁹	Nd7
7.	Qb3 ³	Qe7 ⁴	16.	Qb8!	Nb8
8.	Nc3 ⁵	c6	17.	Rd8#	
9.	Bg5	b5 ⁶			

NOTES:

1. Quickly seizing the center.
2. White wins a pawn after 4...de 5. Qd8 Kd8 6. Ne5, so Black exchanges and allows White to recapture with development.
3. A double attack on b7 and f7.
4. Interfering with the development of the bishop, but intending to escape with the loss of one pawn after 8. Qb7 Qb4.
5. Simple development. Black now neglects his own to guard his b-pawn.
6. Hoping to drive the enemy back, but now that White's pieces are fully mobile, a sacrifice can be made to open lines to the king.
7. Tucking the king away safely while applying pressure to the pinned knight.
8. Castling doesn't help. 12...O-O-O 13. Ba6 Kc7 14. Qb7#.
9. With the lights in the operahouse dimming, Morphy finishes with grace.

SOLUTION: 1. Qb4! wins, threatening Qf8 and Qb7. If 1...Qc8, 2. Qb7! Qb7 3. Re8#

PLACES TO PLAY

Redwood City Chess Club: Meets Mondays, First Baptist Church, James and Hudson. Informal games. John Vitlacil 367-9368.

Burlingame Chess Club: Meets Thursdays, Lions Club, 990 Burlingame Ave. USCF tnmts, informal play. Wilfred Goodwin, 593-0054.