

# Chess

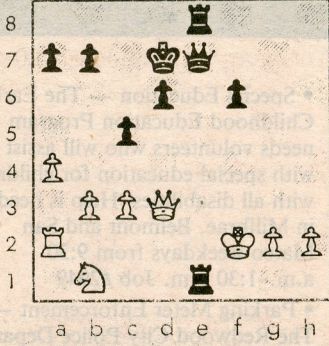


By Frisco Del Rosario

## FROM THE GOODWIN OPEN

### LIEBL-M. SCHNEIDER

Black to play and win.



### FUENTES WINS FIRST GOODWIN OPEN

Expert Romulo Fuentes won the Burlingame Chess Club championship held consecutive Thursdays Sept. 21-Oct. 26 with a 5½-½ score. The tournament has been named the Goodwin Open in honor of club director Wilfred Goodwin, who has directed the club for 28 years.

Scott Wilson directed the event; 66 players participated. Fuentes won \$100, a trophy and the title of club champion for one year. Trophies and brilliancy prizes were awarded in each division.

A tournament book of 43 selected games with annotations and diagrams is available for \$5 from Goodwin Open Tournament Book, 1605 Manzanita Ave., Belmont, CA 94002 (add \$1 for handling).

- |                         |                         |
|-------------------------|-------------------------|
| 1st: Romulo Fuentes     | 1st B: John Elward      |
| 1st Expert: Rob't Armes | 2nd B: Wayne Hinkel     |
| 2nd Ex: Vincent Stevens | 3rd B: Kenneth Habeeb   |
| 1st A: Ignac Sperman    | 4th B: Victor Garcia    |
| 2nd A: Mark Drury       | 1st C: Tom Goldsworthy  |
| 3rd A: Virgilio Fuentes | 2nd C: Rene Liebl       |
| 4th A: Scott Wilson     | 1st D/E/Unr: Ed Lorenas |
|                         | 2nd D/E/Unr: S. Duerden |

Expert Robert Armes won the brilliancy prize in the expert section for this game.

### Burlingame 1989

White: Robert Armes  
Black: Charles Demaguila  
Sicilian Defense

- |                          |                          |
|--------------------------|--------------------------|
| 1. e4 c5                 | 17. a3 e5 <sup>3</sup>   |
| 2. Nf3 d6                | 18. Be3 d5               |
| 3. d4 cd                 | 19. Bg5 de               |
| 4. Nd4 Nf6               | 20. Rd7 Rd7              |
| 5. Nc3 g6                | 21. Bf6 Bf6              |
| 6. Be3 Bg7               | 22. Ne4 Bg7              |
| 7. f3 Nc6                | 23. g5 <sup>4</sup> Rd3  |
| 8. Qd2 O-O               | 24. Rc1 h5               |
| 9. Bc4 Nd4               | 25. gh Bh6               |
| 10. Bd4 Be6              | 26. Rc8 Kg7              |
| 11. Bb3 Qa5              | 27. Qh4 <sup>5</sup> g5  |
| 12. O-O-O Bb3            | 28. Ng5 Qd2              |
| 13. cb Rfd8              | 29. Ne6 Kg6 <sup>6</sup> |
| 14. Kb1 Rd7 <sup>1</sup> | 30. Rg8 Kh7 <sup>7</sup> |
| 15. g4 Rad8              | 31. Rg1 <sup>8</sup> Rd6 |
| 16. Qf2 b6 <sup>2</sup>  | 32. Qe4 Resigns          |

### NOTES:

1. Beginning a slow and transparent plan to play the freeing ...d5. White can direct his play against that plan.
2. Black should have been tempted to sacrifice the a-pawn.
3. Black is trying not to have his bishop exchanged after his knight leaves f6, but turns it into a "bad" bishop.
4. White is threatening Nf6, and Black can't play ...Bf6 because of gf, Qh4-h6.
5. White threatens Rh8!
6. White cleans up after 29...fe 30. Qe7 Kg6 31. Rg8.
7. 30...Kf5 was suggested in the post-mortem, but 31. Ng7! wins — the prettiest line is 31...Kg6 32. Nh5 Kh7 (32...Kf5 33. Qg4#) 33. Nf6#. 31...Bg7 32. Qg4 Kf6 33. Qg7 also wins for White.
8. White finally takes care of Black's threat of ...Qd1, ...Qb3 and ...Rd1. Now White threatens Qe4 and a step-checkmate (32. Qe4 Kh8 33. Qe5 Kh7 34. Qf5 Kh8 35. Qf6 etc.). White also threatens 32. Nf8 followed by Qf6 mate. Black can only deal with one.

**SOLUTION:** 1...Rf1! wins (2. Kf1 Qe1#, 2. Qf1 Qe3#, 2. Kg3 Qg7 and ...Rh8).

### PLACES TO PLAY

**Redwood City Chess Club:** Meets Mondays, First Baptist Church, James and Hudson. Informal games. John Vitlacil 367-9368.

**Burlingame CC:** Meets Thursdays, Lions Club, 990 Burlingame Ave. USCF tnmts, informal play. Wilfred Goodwin, 593-0054.

**Palo Alto CC:** Tuesday eves, days Sat. & Sun. 3800 Middlefield. USCF & blitz tnmts, informal play. Steve Farmer, 329-2487.

We welcome your games, positions and comments.