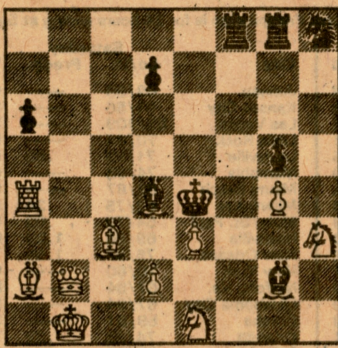


CHESS

BY ISAAC KASHDAN
INTERNATIONAL GRANDMASTER
TIMES CHESS EDITOR

BLACK 9



WHITE 10

August 30, 1981
Times Problem 4610
By Comins Mansfield
England

White Mates in Two

The keymove is a real surprise, with six different mates resulting.

Solution to Problem 4606: Q-KB4

Threat, 2 Q-K3; if K-K3, 2 Q-N4ch; if RxP, 2 P-B4ch; if N any, 2 Q-Q6ch; if P-N4, 2 Q-B5ch.

GHEORGHIU WINS U.S. OPEN TITLE

A record for attendance at California chess events was set when 694 players entered the U.S. Open Championship Tournament at Palo Alto. They came from all over the country, with a number of foreigners joining as well.

With 12 rounds scheduled, and not more than one game a day, the pace was much more leisurely than in the vast majority of volume tournaments, generally completed in a single weekend.

Swiss system pairings were used throughout. For the first few rounds the best players were matched with opponents far below them in strength, and upsets were few. Competition became much keener in the later rounds, and standings could change drastically at the end of each day.

At the end there were five players at the head of the list, tied with totals of 10-2. They shared the major prizes, receiving \$1,850 each.

Florin Gheorghiu of Romania was declared the U.S. Open Champion, based on the tie-breaking system used. This takes into account the final scores of all the opponents of those in the tie group.

Gheorghiu did not lose a game, winning eight times and drawing four. He drew in the third round with Mark Orfalea, one of the leading juniors in this area, and in the sixth with Robert Rowley of Tempe, Ariz.

In the 10th and 11th rounds, Gheorghiu drew with two of his chief rivals, Larry Christiansen of Modesto, co-holder of the U.S. Invitational Championship, and former champion John Grefe of Ashland, Ore. In the final round Gheorghiu defeated Dimitri Gurevich of the Bronx, N.Y.

The order of the other players with 10-2, based on the same tie-breaking method, was Christiansen. Jeremy Silman of San Francisco, Nick DeFirmian of Berkeley and John Meyer of Washington, D.C.

Christiansen also drew four games, with no losses. The first was with much lower rated Michael Tomey in the third round. He then won five games in a row to be alone in first place after eight rounds. Then came three more draws toward the end with Grefe, Gheorghiu, and in the last round, with DeFirmian.

Silman and DeFirmian each won nine games, more than anyone else, drew two and lost one. Silman drew with Steven Feldman of Ann Arbor, Mich., and Daniel Shapiro of Great Neck, N.Y., before losing to Gheorghiu in the ninth round. He won his last three games to catch up.

DeFirmian had his loss early, to Dennis Gogel of New Albany, Ind. He later drew in the ninth round with Meyer, and in the critical final round, with Christiansen.

Meyer, the lowest rated of the top five, is still a senior master. He drew two games early, then advanced strongly. His later draws were with DeFirmian in the ninth round the Blyviasas in the final.

An even larger group was tied with totals of 9½-2½, still enough to share in the prizes. Among them were three grandmasters, James Tarjan of Berkeley, Blyviasas and Andrew Soltis of New York City.

The others, in rating order, were Sergey Kudrin of Stamford, Conn., Douglas Root of Diamond Bar, Michael Brooks of Kansas City, Rowley and Douglas McClintock of Santa Monica.

The games below are from the tournament.

SO. CALIF. OPEN CHAMPIONSHIP TOURNEY

The eighth annual Southern California Open Chess Championship will be held over the Labor Day weekend at Los Angeles City College, 855 N. Vermont Ave. Six rounds will be played starting at 10 a.m. Sept. 5.

Two separate sections will be run: one open to all with the championship at stake, and the other limited to players rated under 1800 by the U.S. Chess Federation or those not previously rated.

The total prize fund is guaranteed at \$5,000 by the Players Chess Assn., 2503 West 7th St., Los Angeles 90057. The guarantee may be increased to as much as \$7,000, depending on the number of entries.

The minimum first prize in the Open Section is \$625 plus the championship trophy. Other prizes for

the top results range down to \$50. Cash prizes may also be earned by players rated below 2200. In the Amateur Section there will be cash and trophy awards within specific rating groups.

The entry fee will be \$39.70 if received by the PCA by Sept. 3. It will be \$47 for later entries. In addition membership in USCF is required, with annual dues of \$20 for adults and \$10 for juniors under 19. Californians must also belong to the Southern California Chess Federation, with dues of \$5. Memberships may be obtained when registering.

QUEEN'S GAMBIT DECLINED

Tarjan White	Wada Black	13-BxB	QxB	27-NxN	RxN
1-P-Q4	P-Q4	14-O-O-O	P-N4	28-R-R4	R-K2
2-P-QB4	P-K3	15-P-KN4	N-Q2	29-QR-R1	QR-K1
3-N-QB3	N-KB3	16-P-N5	N-N3	30-K-R1	P-R5
4-PXP	PXP	17-K-N1	B-Q2	31-Q-N1	Q-K3
5-B-N5	B-K2	18-R-QB1	P-QR4	32-R-B4	Q-Q2
6-P-K3	O-O	19-P-KR4	B-N5	33-R-B6	N-Q7
7-B-Q3	P-B3	20-N-Q2	B-R4	34-Q-B2	N-B5
8-Q-B2	QN-Q2	21-N-K2	N-B5	35-PxP	BPxP
9-N-B3	R-K1	22-BxB	N-B1	36-BxP	PxB
10-P-KR3	N-B1	23-N-N3	P-N3	37-QxPch	R-N2
11-B-KB4	N-N3	24-B-Q3	R-K2	38-Q-R5	R-R2
12-B-R2	B-Q3	25-P-R5	N-Q2	39-R-N6ch	K-R1
		26-N-B5		40-R-R6	Resigns

GIUOCO PIANO

Kudrin White	Lobo Black	11-Q-Q1	P-QR3	23-N-K2	P-Q4
1-P-K4	P-K4	12-N-B1	N-K2	24-P-K5	Q-K2
2-N-KB3	N-QB3	13-N-N3	P-R3	25-Q-N3	N-N2
3-B-B4	B-B4	14-N-R4	N-QB4	26-N-B3	Q-K3
4-P-B3	N-B3	15-P-Q4	N-K3	27-B-N5	R-Q2
5-P-Q3	P-Q3	16-N(N)-B5	PxP	28-B-B6	N-B4
6-O-O	B-N3	17-PxP	NxN	29-N-K2	B-R4
7-B-N3	B-K3	18-NxN	Q-B3	30-R-KB1	B-N3
8-QN-Q2	BxB	19-B-K3	KR-K1	31-N-B4	Q-B3
9-QxB	N-Q2	20-Q-Q3	QR-Q1	32-Q-KR3	N-N2
10-R-K1	O-O	21-QR-Q1	P-KR4	33-P-KN4	Resigns
		22-N-N3	P-N3		

KING'S INDIAN DEFENSE

Gross White	Blyviasas Black	10-O-O	N-R4	21-P-N3	N-N5ch
1-P-Q4	N-KB3	11-B-K3	P-KB4	22-K-N2	N-K4
2-P-QB4	P-KN3	12-PxP	PxP	23-BxN	BxB
3-N-QB3	B-N2	13-P-B4	P-K5	24-Q-K1	NxPch
4-P-K4	P-Q3	14-B-QB2	QN-B3	25-NxN	BxKN
5-B-Q3	O-O	15-P-KR3	B-Q2	26-RxB	QxR
6-B-N5	P-K4	16-P-QN4	K-R1	27-R-B1	Q-K4
7-P-Q5	P-QR3	17-K-R2	Q-N3	28-NxP	R(B)-N2
8-Q-Q2	Q-K1	18-R-KN1	R-B2	29-Resigns	
9-KN-K2	QN-Q2	19-QR-KB1	R-KN1		
		20-B-Q4	Q-R3		

SICILIAN DEFENSE

Shirazi White	Duckworth Black	11-P-B4	P-KR3	23-R-R3	P-Q4
1-P-K4	P-QB4	12-B-R4	B-N5	24-B-N5	QPxP
2-N-KB3	P-Q3	13-N-Q5	BxB	25-N(Q)xP	PxN
3-P-Q4	PxP	14-QxB	R-K1	26-NxP	N(B)-N1
4-NxP	N-KB3	14-P-B3	N-Q2	27-QxP	K-N1
5-N-QB3	P-KN3	16-QR-Q1	P-K3	28-BxP	R-K2
6-B-K2	B-N2	17-N-K3	Q-B2	29-Q-N5	BxB
7-B-KN5	O-O	18-R-Q3	P-QN4	30-QxR	QxKBp
8-OxO	N-B3	19-KR-Q1	B-B1	31-RxB	QxR
9-N-N3	B-K3	20-N-N4	P-QR4	32-N-B6ch	K-R1
10-K-R1	Q-B1	21-N-Q2	P-B4	33-QxP	Resigns
		22-N-B2	K-R2		

IRREGULAR DEFENSE

Wada White	Shirazi Black	11-O-O-O	O-O	23-B-N4	B-N4
1-P-K4	P-Q3	12-P-B4	P-QB4	24-B-B5	N-B3
2-P-KN3	N-KB3	13-Q-Q3	P-QN4	25-Q-R3	NxPch
3-B-N2	P-KR4	14-QxP	B-N5	26-NxN	QRxN
4-P-Q4	N-B3	15-B-B3	R-QN1	27-BxR	RxB
5-N-QB3	P-R5	16-Q-Q3	B-Q2	28-QxB	RxNch
6-B-N5	N-B3	17-KN-K2	Q-R4	29-K-B3	QxRP
7-B-K3	N-R2	18-PxP	BxB	30-Q-Q8ch	B-K1
8-P-Q5	P-K4	19-Q-K3	R-N5	31-RxPch	KxR
9BxN	N-Q5	20-KR-N1	KR-N1	32-R-N1ch	K-B1
10-QxP	PxB	21-P-N3	Q-R6ch	33-QxPch	R-K2
	B-K2	22-K-Q2	R-K1	34-Q-R6mate	