

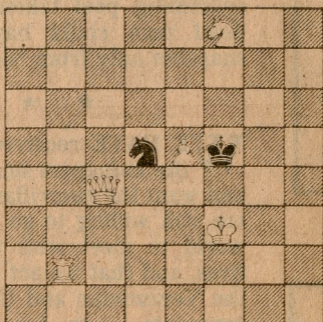
Chess

By George Koltanowski

12.2.79

PROBLEM

By M. Zalewski, Poland



White to play and mate in two moves.

Played in the California Chess Masters' Open, Berkeley, January 1979

White: Yasser Seirawan, Seattle.
Black: Walter Browne, Berkeley.

- | | | | |
|------------|----------|---------------|----------|
| 1.P-QB4 | P-K4 | 11.B-Q3 | K-Q1 |
| 2.N-QB3 | N-QB3 | 12.N-KN1 | P-N4 |
| 3.N-B3 | P-B4 | 13.N1-K2 | PxP |
| 4.P-Q4 | P-K5 | 14.BxQBP | Q-B4 |
| 5.N-KN5 | P-KR3 | 15.K-Q3(d) | R-N1 |
| 6.N-R3 | PKN-4(a) | 16.B-K3 | QxBch(e) |
| 7.P-B3 | PxP | 17.KxQ | B-R3ch |
| 8.KPxP(b) | B-N2 | 18.N-N5 | NxN |
| 9.P-Q5 | Q-K2ch | 19.Resigns(f) | |
| 10.K-Q2(c) | N-Q5 | | |

(a) Poses some tough questions to his young and wily opponent.

(b) Might have considered NPxP here.

(c) Counts on getting counter-play with R-K1 eventually — 10.B-K2 is safer.

(d) Looking for trouble . . . and getting it!

(e) Cute finish!

(f) Black threatens mate in two N-Q3 d.ch and R-N4 mate. If 19.N-Q4, NxNch; 20.K-B3, N-K7 d.ch; 21.K-B2, RxP mate.

COMING UP: The Sixth Annual People's Chess Tournament, February 17-19, in the Pauley Ballroom at the Students' Union of the University of California in Berkeley at the corner of Bancroft and Telegraph. Alan Benson will be directing and you can call (415) 843-0661 for details.

SOLUTION to Problem: 1.R-N6.