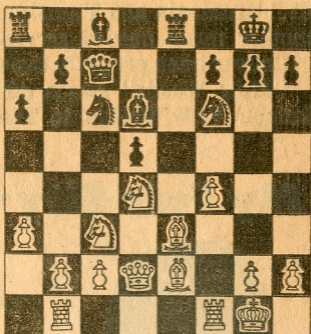


Chess

By George Koltanowski

HOW WELL DO YOU PLAY?



66

Black to move.

If you can see at a glance that Black can get the advantage, then you are a good man — say a strong rapid player.

If it takes you ten seconds, you are still good and even if you take a minute you need not hide your head in shame. If you cannot find your way then you either suffer from chess-blindness or — need much, much more practice! If curious, see solution tomorrow.

Solution to yesterday's problem: 1.QxP.

CANDIDATES SEMI-FINALS: Spasski, USSR (who beat Geller 5½-2½) will play the winner of the Larsen-Portisch match (Larsen leading 3-2) Tal, USSR (who beat Gligorich, 5½-3½) meets Korchnoi, USSR (who beat Reshevsky 5½-2½). Spassky is the over-all favorite. A recent poll gave him 85% of the votes amongst master players.

The Oakland Open Chess Tournament, on Saturday and Sunday, June 22-23, 1968, will have over \$500 in cash prizes in all divisions and has USCF and CFNC rated sections. Also 20 trophies will be given in the different sections. Raymond Ng will direct and will be assisted by Ray McCollough. George Koltanowski will attend. Richard Shorman will direct the Junior divisions. A book with the best games will be published right after the event! Entry fee is \$10 for the USCF rated event. Seven dollars for the CFNC rated A, B, or C sections. Junior division is \$3. The event takes place at the Oakland YMCA, 2101 Telegraph Avenue. First round starts at 12:00 (noon). Bring board and men, and chess clock if you have one. You can send your entry to Oakland Chess Club, Richard Lee, Treasurer, P.O. Box 1622, Oakland, California 94604.

LOOKING AROUND: Hungary beat Yugoslavia in a double-round match: 10½-9½. Moscow beat Prague 13½-8½. On board one David Bronstein, Moscow, drew twice with V. Hort. At Minsk. White Russia beat East Germany 22½-17½.

CAPTAIN JOHN HUDSON, U.S. Chess Master and Ridgely Schneider will both play simultaneous exhibitions at the Open Air Chess Festival at San Bruno on July 4! Bring family and friends, picnic and play chess and win prizes. Festival starts at 10 a.m. at Beckner Field in San Bruno. Bring board and men.