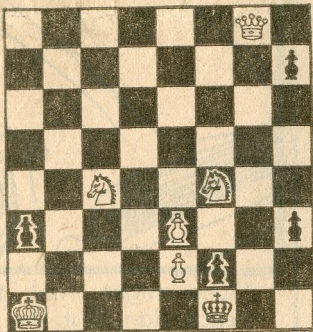


Chess

By George Koltanowski

PROBLEM

By H. Sommer, Jr. Berkeley



30

White to play and mate in three moves.

LAST ROUND BLUES (3)

WHAT A SHAME . . . or What TIME TROUBLE CAN CAUSE . . . Game played in the National Open, Sparks, 1970.

White: Walter Browne.

Black: Ray Martin.

1.P-K4	P-K4	18.QxB	R-K1
2.N-KB3	N-QB3	19.N-R3	Q-R3
3.B-N5	N-Q5(a)	20.PxP(i)	BxN
4.NxN	PxN	21.BxB	QxB
5.O-O	P-QB3	22.PxPch	K-N1
6.B-B4	N-B3	23.QxQP	R-Q1(j)
7.R-K1	P_Q3	24.Q-B2	Q-Q3
8.P-QB3	N-N5(b)	25.P-Q4	QxBP
9.P-KR3	N-K4	26.B-Q3	KR-K1
10.B-B1	P-Q6 (c)	27.R-KB1	Q-N6
11.P-KB4(d)	Q-N3ch	28.B-K4	P-KB4
12.K-R1	P-KR4(e)	29.B-B6	R-K3
13.R-K3	N-B5	30.R-Q5	R-K8
14.R-B3(f)	B-N5	31.QxP	QR-K1
15.P-QN3	P-Q4(g)	32.B-K4	RlxB??(k)
16.PxP	O-O-O	33.Q-B8	mate (l)
17.PxN(h)	BxR		

(a) An unusual line.

(b) With this move the American Open Champion tackles the Australian Grandmaster in real Masterly fashion!

(c) This holds back White's Queen side development.

(d) How else is he going to shake loose from Black's strangle-hold?

(e) If now 13.PxN, then B-N5; 14.Q-N3,Q-B7, etc.

(f) Feels he must hold the Black Queen from getting to KB2.

(g) Getting more involved and getting more open territory for attack.

(h) What else? He must swallow the Knight if he wants to get developed, but now he has to brace himself for the attack that follows, as his Queen's side pieces are not developed. Ray is up to the task!

(i) Prefers to return the piece and get some play.

(j) In fairness to both players it must be stated here that both players were in extreme time pressure, 27 moves in 2 minutes or less!

(k) With 32 . . . R8xB, Black wins, something he really deserved to do.

(l) After the game Ray was all shook up. Now that I have seen the game, I can understand why!

Solution to Problem: 1.Q-N7,K-K8; 2.Q-B3ch,K-Q8; 3.Q-Q2 mate; or 2 . . . K-K8; 3.Q-B1 mate; If 1 . . . P-KR7; 2.K-R2,P-R8-Q; 3.Q-R1 mate.