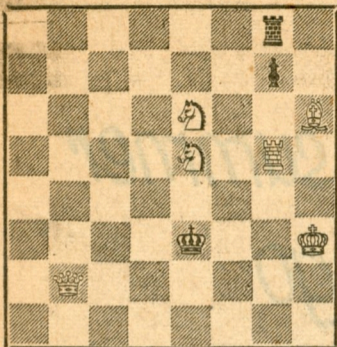


# CHESS

BY HERMAN STEINER

FORMER UNITED STATES CHAMPION  
Address letters to Chess Editor, L.A. Times  
Los Angeles 53, Cal.

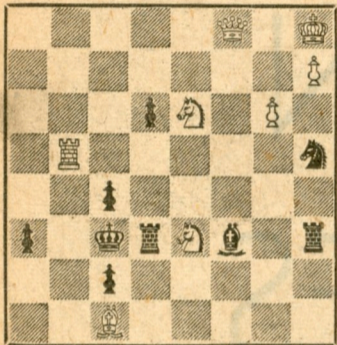
May 16, 1954  
TIMES PROBLEM 2547  
BY S. LOYD  
BLACK 3



WHITE 6

White mates in two.

TIMES PROBLEM 2548  
BY A. NORLIN  
BLACK 9



WHITE 8

White mates in three.

SOLUTION TO PROBLEM 2543: B-B8.

SOLUTION TO PROBLEM 2544: Q-K3.

We received solutions from C. B. Collins (your score will be corrected), I. H. Crowne, Dr. J. A. Healy, C. G. Tabor, W. C. Everett, T. Rothman, D. Fehling, J. P. Walsh, N. Lesser, W. B. Tudor, C. P. Ford, G. B. Sharman, L. A. Victor, S. W. Nay, H. S. Smith, R. E. Cunningham, A. P. Berthold, J. H. Gordon, E. E. Hetherington, S. Sheridan, J. Munson, B. McGuire, P. V. Nielsen, J. J. Adams, M. C. Bransby, J. G. Scipps, Toscha Seidel, K. Chambers, G. Comroe, C. C. Carr, C. T. Tongko, L. Harvey, T. Rothschild, J. C. Dickson, K. J. Hartman, J. Kaufman, R. Lowmaster, J. Davidson, L. B. Rotter, L. Marone, H. T. Caskey, W. H. Carter Jr., M. Morris, A. Landry, S. J. Myzel, W. G. Fox, W. M. Shuman, R. Sinnot, L. Resnick.

### TEAM MATCHES

Following are the results of the Los Angeles County Chess League's team matches (Round 3):

**A GROUP**—Hollywood 3½, Santa Monica ½; Inglewood 1, Pasadena 3; Long Beach 3, Van Nuys 1.

Standing of clubs after three rounds of play:

	Matches		Games	
	W	L	W	L
Hollywood	2½	½	9½	2½
Long Beach	2	1	7	5
Santa Monica	2	1	5½	8½
Pasadena	1½	1½	6	6
Van Nuys	1	2	7½	4½
Inglewood	0	3	2½	9½

**B GROUP**, fourth-round results—Cosmopolitan ½, Hollywood 5½; Inglewood 3½, Santa Monica 2½; North American 4½, Beverly Hills 1½; Valley 5, Water and Power 1.

Standing of clubs after four rounds of play:

	Matches		Games	
	W	L	W	L
Hollywood	3	1	16½	7½
Inglewood	3	1	14	10
North American	3	1	13	11
Santa Monica	2	2	15	9
Beverly Hills	2	2	11½	12½
Cosmopolitan	2	2	11½	12½
Valley	1	3	11½	12½
Water and Power	0	4	5	19

### HIGH SCHOOL CHESS LEAGUE

Seven A teams and six B teams of the Southern California High School Chess League have qualified from a field of 28 A teams and 24 B teams to enter this semester's semifinals. Four weeks remain. Games are being played on a four-round Swiss system, with each round lasting five or six days. The playing locations vary according to the accommodations of the competing teams.

First-round pairings in A are as follows: Wilson High and Fairfax High, University High and Van Nuys High, Compton High and Fremont High, with Belmont High having the bye.

B Division pairings are: Belmont High and Glendale High, Fairfax High and Van Nuys High, Compton High and Washington High.

Eugene Steiner is tournament director and adjudication is being handled by your editor.

Following the finals there will be a meeting of all league members at Belmont High School on June 12, to which anyone interested in high school chess activity is cordially invited.

### KOLTANOWSKI'S SIMULTANEOUS EXHIBITION

George Koltanowski, international master, will give a simultaneous exhibition against all comers today at 7 p.m. at the Jewish Community Center, 5870 W. Olympic Blvd. The public is cordially invited. Take your set and board. For further information and reservation call Webster 82531. Nathan Hurvitz, educational director, is in charge.

### SOUTH VS. NORTH MATCH

The annual South vs. North match scheduled for the week end of May 29 to 31 will be played in San Luis Obispo. Participants are requested to make application for place on the team as soon as possible. Transportation will be supplied for those who have none. Write your editor, care of this column. For further information call Webster 18817 or WYoming 3510. Let's get behind our team this year. There will be a minimum of 50 boards.

### CHESS FESTIVAL

The newly organized City Terrace Cultural Center Chess Club will celebrate its first anniversary Wednesday with a mammoth chess festival at its club, 3875 City Terrace Drive, at 8 p.m.

Sam Chernoff, club president, has announced prizes will be awarded to contestants who topped a list of 25 participants in a recently concluded club championship tournament.

As a special feature of the evening Harry Borochoy in conjunction with Irving Spiro will play against all comers simultaneously in tandem fashion. It is a novel event in which the two master performers alternate their moves on board after board without consulting each other.

LeRoy Johnson, president of the California Chess Federation, will be master of ceremonies. Players are asked to take their chess sets, and reserve a place in the contest by calling Angelus 1-6567. Visitors are welcomed.

### RAPID TRANSIT WINNERS

The weekly Wednesday evening rapid transit tournament at the Hollywood Chess Group, 108 N Formosa Ave., was won by R. W. Banner and H. Rogosin, each with a score of 11-2; third and fourth place also was tied by H. Borochoy and S. Weinbaum, 10-3.

The tournament is open to anyone. For further information call Webster 1-8817 or WYoming 3510. The headquarters of the Hollywood Chess Group is open nightly, Saturday and Sunday afternoons. Visitors are always welcome.

### SANTA MONICA AREA CHAMPIONSHIP

After four rounds of play Charles Henderson and John Keckhut lead with a perfect score of 4-0 in the Santa Monica Bay Area Championship Tournament. Fourth-round results: Abel, ½; Holmes, ½; Hurlbut, 0; Wrangel, 1; Bud, 1; Wentcher (forfeited), 0; Anderson, 0; Keckhut, 1; Chereseter, 0; Cross, 1; Shank, 0; Henderson, 1.

Games are being played at the Santa Monica Chess Club at Lincoln Park, 7th St. and Wilshire Blvd., in Santa Monica, Monday evenings.

### COUNTY LEAGUE RAPID TRANSIT

The annual Los Angeles County Chess League Rapid Transit Championship Tournament will be held at the Hollywood Chess Group, 108 N Formosa Ave., next Sunday noon. The tournament is open to all! Because of the great interest this tournament attracted in the past, players are requested to take their own boards and sets. Games will be played in the garden. Anyone who has folding tables and chairs please take them along. During the dinner recess, plans for the forthcoming South vs. North match will be talked over.

For further information call Webster 1-8817 or WYoming 3510.

### U.S.S.R. VS. U.S.A. MATCH

According to latest report, the U.S.S.R. chess team headed by M. Botvinnik will arrive in New York June 10 or 12. This is the long-awaited return match which follows the one in 1946 played in Moscow. The latter was a 10-board double round, which the U.S.S.R. players won with a score of 12½-7½. This time the match will be four rounds on eight boards. (The U.S.S.R. team minus Botvinnik and Smyslov won overwhelmingly against the strong Argentine team recently with a score of 20½-11½.)

Following is the proposed line-up: Reshevsky vs. Botvinnik, Denker vs. Smyslov, Pavey vs. Keres, D. Byrne vs. Bronstein, Horowitz vs. Taimanov, R. Byrne vs. Kotov, Bisguier vs. Geller, Evans vs. Boleslavsky. A. Duke is a reserve for the United States.

First-round play will begin Wednesday evening, June 16. Plans are being made here by the Pan-American International Committee to have the games re-created by telephone for the public at the Hollywood Athletic Club, 6525 Sunset Blvd., where the forthcoming Pan-American International Open Tournament will also be played. I. Kashdan, H. Steiner, I. Rivise, H. Borochoy and J. Moskowitz will comment on the games as they are transmitted. Season ticket donations for this event are \$5, individual evenings, \$1.50.

Reservations should be made by calling or writing the Hollywood Chess Group, 108 N Formosa Ave. Phone Webster 1-8817 or WYoming 3510. The proceeds will go toward the forthcoming Pan-American International Open Tournament.

### SONJA GRAF EXHIBITION

Sonja Graf, recently crowned ladies chess champion of California, will give a simultaneous exhibition against all comers at the Hotel Del Taquitz, Palm Springs, Wednesday at 7 p.m. Visitors are welcome and participants are requested to take their own boards and sets.

### BOTVINNIK RETAINS TITLE

Mikhail Botvinnik retained his world chess championship title last week after a series of 24 closely fought games with Russian contender Vassily Smyslov ended in a tie, 12-12.

They agreed on a draw in the 24th game after the 22nd move at the end of the two-month series. Harry Golombek, British judge of the championship tournament, said Smyslov agreed to a draw because he saw he had no chance of winning.

Two thousand spectators cheered Botvinnik, a slight, bespectacled Russian of 43, according to a Reuters dispatch from Moscow. Smyslov, 33, had failed to win the title after the shortest game of the entire series. Each player won seven games and 10 were drawn.

The match went into a deadlock when Smyslov won the 23rd game in 28 moves to make the score 11½-11½.

Smyslov forced a draw by repetition in the 22nd game.

The 20th game, won by Smyslov, was one of the most grueling encounters of the series. Botvinnik had the white side of a King's Indian Defense, which was adequately handled by Smyslov. In the closely fought ending, Smyslov's lone bishop was superior in reach to the poorly posted white knight. The game went 72 moves.

### 15th Game

SICILIAN DEFENSE		SICILIAN DEFENSE	
White	Black	White	Black
1-P-K4	P-QB4	20-KtxP	KtxRP
2-Kt-QB3	Kt-QB3	21-B-K3	Kt-B4
3-P-KKt3	P-KKt3	22-BxKt	QxB
4-B-Kt2	B-Kt2	23-Q-Kt2	Q-Kt5
5-P-Q3	P-Q3	24-Q-K2	QxK5
6-KKt-K2	P-K4	25-RxQ	R-K4
7-Kt-Q5	KKt-K2	26-QR-K	KR-K
8-P-QB3	KtxKt	27-B-B2	P-R5
9-PxKt	Kt-K2	28-RxR	RxR
10-Castles	Castles	29-P-Q4	PxPch
11-P-KB4	B-Q2	30-KxP	B-Kt4ch
12-P-KR3	Q-B2	31-K-R2	R-B4
13-B-K3	QR-K	32-B-K3	PxP
14-Q-Q2	Kt-B4	33-PxP	K-Kt2
15-B-B2	P-KR4	34-R-B2	P-KKt4
16-QR-K	Q-Q	35-Kt-K2	RxRch
17-K-R2	B-R3	36-BxR	P-B4
18-P-KR4	Q-B3	Resigns	
19-B-K4	PxP		