

CHESS

BY ISAAC KASHDAN

INTERNATIONAL GRANDMASTER
Address Letters to Chess Editor, L.A. Times
Times Mirror Square
Los Angeles, Calif. 90053

TOURNEYS AT SPARKS, LONE PINE IN MARCH

A rare opportunity for chess players to compete in two tournaments with good prizes within a two week period will be offered in March.

The annual National Open Tournament will be held in Sparks, Nev. from March 7 to 12, and the first of a new annual series will be in Lone Pine, Cal. from March 14 to 20.

The top prizes will be at Lone Pine. The winner will take home \$1,000 in cash plus a handsome trophy. The other prizes will be \$600, \$400, \$250, \$150 and \$100.

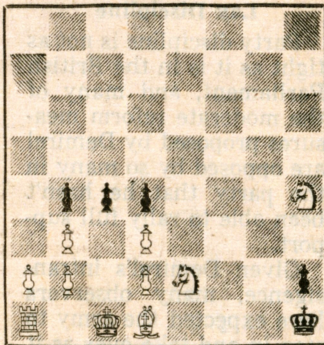
The sponsor is Louis D. Statham, who recently established his residence in Lone Pine, and wishes to develop interest in chess there.

Jan. 24, 1971

TIMES PROBLEM 4057

By J. Albarda

BLACK



WHITE

White mates in two.

It is clear that mate will be by discovered check from the rook. But how do you get both the king and bishop off the line?

SOLUTION TO PROBLEM 4056: Q-K4

A unique feature of the tournament is that there is no entrance fee. Anyone is eligible to play who is currently rated as a master or expert by the U.S. Chess Federation, and is a member of the federation.

Seven rounds will be played, one each day, with Swiss system pairings. This editor will direct the tournament. Those interested should write to Chess Editor, Los Angeles Times.

The National Open Tournament is open to all, with an entrance fee of \$25. It will be an eight round Swiss system, with two rounds each day from March 8 to 10, and one round each of the following days.

The winner will receive \$700. Other top prizes will be \$400, \$300, \$200 and \$100. In addition there will be a number of cash awards and trophies to leaders in various rating categories established by the USCF.

The tournament will be held at John Ascuaga's Nugget in Sparks, East Reno. George Koltanowski will be the director.

The National Open ends on Friday, March 12, and the Louis D. Statham Tournament starts the following Sunday. The distance between Sparks and Lone Pine is 270 miles. Transportation will be provided for all who are eligible and participate in both events.

GLIGORIC TO PLAY

Svetozar Gligoric of Yugoslavia, one of the greatest of the active grandmasters, has agreed to play in both tournaments. He expects to be in the U.S. for several weeks on a transcontinental exhibition tour.

Gligoric had been one of the favorites in the recent Interzonal Tournament, but he failed to qualify as one of the top six. This gave him time for the current trip.

Those who met Gligoric during the First Piatigorsky Tournament in Los Angeles will remember his genial personality and his wit, as well as his ability as writer and analyst, along with his keen chess play. His presence should aid greatly in the interest of the tournaments.

Following is one of his victories in the Interzonal:

KING'S INDIAN DEFENSE

Naranja Philippines		Gligoric Yugoslavia		Naranja Philippines		Gligoric Yugoslavia	
White	Black	White	Black	White	Black	White	Black
1-P-QB4	P-KN3	16-B-K4	P-KN4	1-P-Q4	P-K3	17-N-K3	NxB
2-N-KB3	B-N2	17-N-K3	NxB	2-P-Q4	P-Q4	18-NxN	P-N5
3-P-Q4	N-KB3	18-NxN	P-N5	4-B-KN5	B-N5	19-Q-B2	R-B5
4-N-B3	O-O	20-R-R3	QR-KB	5-P-K4	P-Q3	21-B-B	B-K
5-P-K4	P-Q3	21-B-B	B-K	6-B-K2	P-K4	22-N-Q	B-N3
7-O-O	N-B3	22-N-Q	B-N3	7-O-O	N-B3	23-BxR	PxB
8-P-Q5	N-K2	23-BxR	PxB	9-N-K	N-Q2	24-R-K	P-B6
9-N-K	N-Q2	24-R-K	P-B6	10-P-QN4	P-KB4	25-PxP	NxPch
11-B-N2	N-KB3	25-PxP	NxPch	11-B-N2	N-KB3	26-RxN	PxR
12-PxP	NxBP	26-RxN	PxR	12-PxP	NxBP	27-N(1)-B3	Q-R5
13-N-B2	Q-K2	27-N(1)-B3	Q-R5	13-N-B2	Q-K2	28-K-R	B-K4
14-P-QR4	B-Q2	28-K-R	B-K4	14-P-QR4	B-Q2	Resigns	
15-B-B3	N-R5	Resigns		15-B-B3	N-R5		

NEW USCF RATINGS

The annual rating list of the U.S. Chess Federation, appearing in the December issue of the monthly magazine Chess Life & Review, is always big news to the thousands of tournament players in the U.S.

Most chess tournaments in the country, whether on a local, state or national level, are rated by the USCF. The requirements are that every participant in a tournament be a member of USCF and that a very moderate rating fee be paid.

The ratings are a comparative record of performance, with the number for each player moving up or down based on his results. Classifications are established, ranging from senior master, 2400 and over, down to Class E, under 1200.

Leader for a number of years, with a current rating of 2762, is Bobby Fischer. In fact, he is the highest rated player in the world, based on the voluminous statistics compiled by Prof. Arpad Elo of Milwaukee.

Fischer gained slightly over his 1969 figure of 2745, best at the time. At his level any gain is due to a superlative score, whereas even a good but not brilliant result would mean loss of points.

This is indicated by the next five players on the 1969 list, all of whom lost some ground in the latest ranking. Samuel Reshevsky, current U.S. champion, dropped from 2629 to 2572. Larry Evans went from 2591 to 2567, and Pal Benko from 2566 to 2534.

Two names of international grandmasters appear on the list for the first time, as a result of having played in American tournaments. They are Bent Larsen of Denmark, in second place with 2658, and Lubomir Kavalek of Czechoslovakia, fourth with 2569. Kavalek has applied for U. S. citizenship, and expects to take an active part in the American chess scene.

Others on the top 10 of the latest list are William Lombardy, 2523; Robert Byrne, 2515; Walter Browne, 2493, and William Addison, 2478.

SANTA MONICA EVENTS

The next rating tournament of the Santa Monica Bay Chess Club will start at 7:30 p.m. Monday at its clubhouse in Lincoln Park, Lincoln and Wilshire Blvds. Six rounds will be played on successive Monday evenings.

John Davidian and Jeff Kent tied for first place with scores of 5½-½ in the recently concluded rating tournament, in which 48 players participated.

Both Davidian and Kent won their first five games, then drew with each other in the final round. Bob Klein took third place with 5-1, and Juri Tint was fourth with 4½-1½.

Following are games from the tournament:

FRENCH DEFENSE

Firfaroff White		Kent Black		Firfaroff White		Kent Black	
1-P-K4	P-K3	17-N-Q3	B-N3	17-N-Q3	B-N3	17-N-Q3	B-N3
2-P-Q4	P-Q4	18-N-B5	KR-K	18-N-B5	KR-K	18-N-B5	KR-K
3-N-QB3	N-KB3	19-Q-R5	K-N	19-Q-R5	K-N	19-Q-R5	K-N
4-B-KN5	B-N5	20-Q-N4	P-B3	20-Q-N4	P-B3	20-Q-N4	P-B3
5-P-K5	P-KR3	21-P-KR4	P-K4	21-P-KR4	P-K4	21-P-KR4	P-K4
6-PxN	PxB	22-PxNP	PxNP	22-PxNP	PxNP	22-PxNP	PxNP
7-PxP	R-N	23-R-R6	P-N3	23-R-R6	P-N3	23-R-R6	P-N3
8-Q-Q3	Q-B3	24-Q-R	PxP	24-Q-R	PxP	24-Q-R	PxP
9-P-QR3	BxNch	25-N-Q3	R-K7	25-N-Q3	R-K7	25-N-Q3	R-K7
10-QxB	N-B3	26-R/6-R2	P-B4	26-R/6-R2	P-B4	26-R/6-R2	P-B4
11-B-N5	B-Q2	27-Q-N5	Q-Q2	27-Q-N5	Q-Q2	27-Q-N5	Q-Q2
12-BxN	BxB	28-Q-R6	QR-K	28-Q-R6	QR-K	28-Q-R6	QR-K
13-N-B3	O-O	29-R-R6	Q-K3	29-R-R6	Q-K3	29-R-R6	Q-K3
14-N-K5	B-K	30-R/6-R2	P-B5	30-R/6-R2	P-B5	30-R/6-R2	P-B5
15-P-B3	QxNP	31-N-N4	R-K8ch	31-N-N4	R-K8ch	31-N-N4	R-K8ch
16-O-O	P-KB3	Resigns		Resigns		Resigns	

SICILIAN DEFENSE

Tint White		Davidian Black		Tint White		Davidian Black	
1-P-K4	P-QB4	19-P-KR4	P-R5	19-P-KR4	P-R5	19-P-KR4	P-R5
2-N-KB3	P-Q3	20-P-R5	P-Q4	20-P-R5	P-Q4	20-P-R5	P-Q4
3-P-Q4	PxP	21-P-K5	P-N6	21-P-K5	P-N6	21-P-K5	P-N6
4-NxP	N-KB3	22-P-R3	NxBch	22-P-R3	NxBch	22-P-R3	NxBch
5-N-QB3	P-QR3	23-QxB	PxB	23-QxB	PxB	23-QxB	PxB
6-B-KN5	P-K3	24-NxBP	B-R3	24-NxBP	B-R3	24-NxBP	B-R3
7-Q-Q2	B-K2	25-Q-K3	KR-QB	25-Q-K3	KR-QB	25-Q-K3	KR-QB
8-O-O	Q-B2	26-R-Q2	QR-N	26-R-Q2	QR-N	26-R-Q2	QR-N
9-P-B4	QN-Q2	27-N-Q4	Q-N3	27-N-Q4	Q-N3	27-N-Q4	Q-N3
10-N-B3	P-N4	28-K-Q	QxP	28-K-Q	QxP	28-K-Q	QxP
11-B-Q3	P-N5	29-K-K	R-B6	29-K-K	R-B6	29-K-K	R-B6
12-N-K2	P-QR4	30-Q-B2	B-Q6	30-Q-B2	B-Q6	30-Q-B2	B-Q6
13-N/2-Q4	O-O	31-R-N3	BxN	31-R-N3	BxN	31-R-N3	BxN
14-P-N4	B-N2	32-RxR	QxR	32-RxR	QxR	32-RxR	QxR
15-Q-K2	N-B4	33-NxB	R-N8ch	33-NxB	R-N8ch	33-NxB	R-N8ch
16-BxN	BxB	34-K-K2	B-B4	34-K-K2	B-B4	34-K-K2	B-B4
17-P-N5	B-K2	35-N-Q4	R-N7	35-N-Q4	R-N7	35-N-Q4	R-N7
18-KR-N	KR-K	Resigns		Resigns		Resigns	

CHESS OLYMPICS

BENONI DEFENSE

Yanofsky Canada		Evans USA		Yanofsky Canada		Evans USA	
White	Black	White	Black	White	Black	White	Black
1-P-Q4	N-KB3	21-R-R7	P-B5	1-P-Q4	N-KB3	21-R-R7	P-B5
2-P-QB4	P-B4	22-B-N	R-R	2-P-QB4	P-B4	22-B-N	R-R
3-P-Q5	P-K3	23-RxR	RxR	3-P-Q5	P-K3	23-RxR	RxR
4-N-QB3	PxP	24-N-K2	N-R3	4-N-QB3	PxP	24-N-K2	N-R3
5-PxP	P-Q3	25-B-B3	N-B4	5-PxP	P-Q3	25-B-B3	N-B4
6-P-K4	P-KN3	26-N-N3	Q-N2	6-P-K4	P-KN3	26-N-N3	Q-N2
7-B-K2	B-N2	27-P-B4	R-K	7-B-K2	B-N2	27-P-B4	R-K
8-N-B3	O-O	28-K-R2	P-N5	8-N-B3	O-O	28-K-R2	P-N5
9-O-O	R-K	29-B-Q4	N-N6	9-O-O	R-K	29-B-Q4	N-N6
10-N-Q2	N-R3	30-BxN	BxB	10-N-Q2	N-R3	30-BxN	BxB
11-R-K	N-B2	31-P-K5	PxP	11-R-K	N-B2	31-P-K5	PxP
12-P-QR4	R-N	32-N-K4	Q-N3	12-P-QR4	R-N	32-N-K4	Q-N3
13-B-B	P-N3	33-P-Q6	B-R5	13-B-B	P-N3	33-P-Q6	B-R5
14-N-B4	B-QR3	34-Q-N4	BxR	14-N-B4	B-QR3	34-Q-N4	BxR
15-B-N5	Q-Q2	35-N-B6ch	K-R	15-B-N5	Q-Q2	35-N-B6ch	K-R
16-P-R3	P-R3	36-NxR	Q-Q5	16-P-R3	P-R3	36-NxR	Q-Q5
17-B-Q2	BxN	37-P-Q7	PxP	17-B-Q2	BxN	37-P-Q7	PxP
18-BxB	P-R3	38-P-R4	B-N6ch	18-BxB	P-R3	38-P-R4	B-N6ch
19-B-Q3	P-QN4	39-K-R3	P-R4	19-B-Q3	P-QN4	39-K-R3	P-R4
20-PxP	PxP	Resigns		20-PxP	PxP	Resigns	

PIRC-ROBATSCH DEFENSE

Spain White		Petrossian USSR Black		Spain White		Petrossian USSR Black	
1-P-Q4	P-KN3	17-N-KN5	O-O	1-P-Q4	P-KN3	17-N-KN5	O-O
2-P-QB4	B-N2	18-N-Q5	NxN	2-P-QB4	B-N2	18-N-Q5	NxN
3-N-QB3	P-Q3	19-BxN	B-K	3-N-QB3	P-Q3	19-BxN	B-K
4-N-B3	B-N5	20-B-R6	P-K3	4-N-B3	B-N5	20-B-R6	P-K3
5-P-KN3	Q-B	21-BxB	RxB	5-P-KN3	Q-B	21-BxB	RxB
6-B-N2	N-KR3	22-N-B3	N-Q5	6-B-N2	N-KR3	22-N-B3	N-Q5
7-P-KR3	B-Q2	23-RxP	R(2)-KB2	7-P-KR3	B-Q2	23-RxP	R(2)-KB2
8-P-K4	P-KB3	24-N-K4	Q-B2	8-P-K4	P-KB3	24-N-K4	Q-B2
9-B-K3	N-B2	25-R-N5	R-B5	9-B-K3	N-B2	25-R-N5	R-B5
10-Q-Q2	P-QB4	26-Q-Q3	P-KR3	10-Q-Q2	P-QB4	26-Q-Q3	P-KR3
11-PxP	PxP	27-N-Q6	PxR	11-PxP	PxP	27-N-Q6	PxR
12-O-O	N-B3	28-NxB	RxN	12-O-O	N-B3	28-NxB	RxN
13-K-N	P-N3	29-QxPch	K-B	13-K-N	P-N3	29-QxPch	K-B
14-P-KR4	R-QN	30-QxNP	Q-R2ch	14-P-KR4	R-QN	30-QxNP	Q-R2ch
15-KN-K	R-N2	Resigns		15-KN-K	R-N2	Resigns	
16-P-K5	PxP			16-P-K5	PxP		