

CHESS

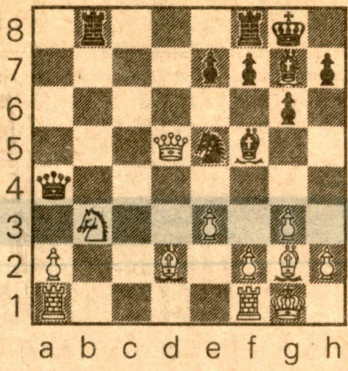
BY JACK PETERS
INTERNATIONAL MASTER

TODAY'S GAMES

May 6, 1984

Position #4747: Black to play and win. From the game Shabalov-Khalifman, U.S.S.R. 1984.

Solution to Position #4746: Best is 1 Qxf8! Bxf8 2 Rf7+ Kg8 3 Nxe4, winning the Queen because of the threatened 4 Nf6+ Kh8 5 Rh7 mate. If 2... Kh8, then 3 Rxf8+ Kg7 4 Rg8+ Kf6 5 Nxe4 does the trick. Less clear is 1 Rc7+ Bd7.



INTERNATIONAL NEWS

The United States has a new world chess champion. He is Victor Palciauskas of Fullerton, who has just clinched first prize in the Tenth World Correspondence Chess Championship. With one game unfinished (a likely draw), Palciauskas has 11-3, and Juan Morgado of Argentina, his closest competitor, has 10½-4½.

Palciauskas, 41, has been involved in various postal tournaments leading up to the world championship since 1970. He's now a correspondence grandmaster and an over-the-board master. Hans Berliner, the fifth postal champion, is the only other American to win the highest title in correspondence chess.

World champion Anatoly Karpov of the Soviet Union won an international tournament in Oslo, Norway. Karpov is now playing in the Phillips and Drew tournament in London. Victor Korchnoi, Lev Polugaevsky, Ulf Andersson, Jan Timman, Yasser Seirawan and other stars provide the competition. Polugaevsky beat Seirawan in an early game.

After six of nine rounds, Dmitry Gurevich of New York leads the New York International with 5-1. A half-point behind are GMs Ljubomir Ljubojevich, Lajos Portisch, Lubos Kavalek, Genna Sosonko, Roman Dzindzichashvili, IM Boris Kogan and Dmitry London. London, a 20-year-old master from Brooklyn, has upset GM Quinteros and IM Nick DeFirmian. There are 22 GMs in the 64-player field.

LOCAL NEWS

The La Palma Chess Club's Ninth Anniversary Open, a two-section tournament on five Friday nights, begins May 11 at 7821 Walker St. in La Palma. There are special prizes for best game, quickest mate, and biggest upset. For details, call Mike Henebry (213) 421-9831 or Richard Oberlin (714) 527-3805.

The fifth Memorial Day Classic, the area's largest tournament, will be held May 26-28 at the Sheraton-Universal Hotel in North Hollywood. Lina Grumette's Chess Set Educational Trust is guaranteeing \$24,000 in prizes, hoping to attract more than 500 entrants. There's also a reduced entry fee for high school students who do not wish to compete for cash prizes. For more information, call Lina at (213) 657-3680 or Ben Nethercot at (213) 455-1704 (evenings).

On Friday, May 25, the night before the tournament, GM Larry Christiansen, the U.S. co-champion, will give a ten-board blindfold simultaneous exhibition. Boards will be sold to the highest bidders, with a minimum bid of \$30. Lina must receive all bids by May 12. The charge to spectators is \$2. All contributions are tax-deductible.

The Clairemont Chess Club has a new meeting time and location. From now on, the club will meet on Wednesdays from 7 p.m. to 1 a.m. at Our Savior's Evangelical Lutheran Church, 4011 Ohio St. in North Park, San Diego.

Palciauskas (U.S.A.)-Boey (Belgium), Tenth World Correspondence Championship: 1 e4 e5 2 Nf3 Nc6 3 Bb5 f5 Boey is an expert on the Schliemann Defense. **4 Nc3 fxg4 5 Nxe4 d5 6 Ng3** A quiet alternative to the main line **6 Nxe5 dxe4 7 Nxc6. Bg4 7 h3 Bxf3 8 Qxf3 Qd6 9 0-0 0-0-0 10 c3 g6?! 11 d4 e4** Not 11... exd4? because of **12 Bf4. 12 Qg4+ Qd7 13 Qxd7+ Rxd7 14 f3!** Eliminating Black's only advantage, his cramping e-pawn. **Bd6 15 Ne2 exf3** He can't try 15... Nf6 **16 Bg5 exf3** because **17 Bxf6 fxg2 18 Bxe2 Rf8 19 Bg4** wins the exchange. **16 Rxf3 Nge7 17 Bg5** White has the Bishop pair, the f-file, and the initiative. **a6 18 Bd3 Nd8 19 Nf4 Bxf4 20 Bxf4 Rf8 21 Raf1 Ng8 22 Be2!** Preventing **22... Rdf7**, which is refuted by **23 Bg5!** Rxf3 **24 Bxf3**, threatening the d-pawn and **25 Bg4+**. **Ne6 23 Bc1 Rxf3 24 Bxf3 Nf6 25 Re1 Rd6 26 h4 Kd7 27 Bg5!** Ceding a Bishop for more space and the half-open h-file. **Nxg5 28 hxg5 Ng8 29 Kf2 Kd8 30 Bg4 h5** Else **31 Rh1. 31 Be6 Ne7 32 g4 hxg4 33 Bxg4 Ke8?! 34 Re6! Kf7** After **34... Rxe6 35 Bxe6**, White's King will reach e5. On **34... Rd8 35 Rf6**, Black can hardly move. **35 Rxd6 cxd6 36 Ke3 a5** Inviting penetration on b5, but **36... Nf5 37 Bxf5 gxf5 38 Kf4** wins for White, too. **Kd3 Nc6 38 Kc2 a4 39 b3 axb3+ 40 Kxb3 Ke8 41 Be6 Ne7 42 Kb4 Kd8 43 Kb5 Kc7 44 a4 Kb8** Zugzwang! If **44... b6 45 Ka6 Kc6**, then **46 Bf7 Kc7 47 Be8 Kd8 48 Bxg6!** Nxg6 **49 Kxb6** wins. **45 Kb6 Nc8+ 46 Bxc8 Kxc8 47 a5 Kb8 48 a6 bxa6 49 Kxa6 Kc7 50 Ka7, Black Resigns.** A possible finish is **50... Kd7** (or **50... Kc6 51 Kb8!**) **51 Kb7 Ke6 52 Kc6 Kf5 53 Kxd5 Kxg5 54 Kxd6 Kf4** (other moves lose to **55 c4**) **55 Ke6 g5 56 d5 g4 57 d6 g3 58 d7 g2 59 d8Q g1Q 60 Qd4+!** Thanks to Victor Palciauskas for most of this analysis.

Estrin (U.S.S.R.)-Palciauskas (U.S.A.), Tenth World Correspondence Championship: 1 e4 e5 2 Nf3 Nc6 3 Bc4 Bc5 4 b4 Bxb4 5 c3 Ba5 6 d4 d6 7 Qb3 7 0-0 Bb6 is the Lasker Defense, which drove the Evans Gambit out of popularity at the turn of the century. **Qd7 8 dxe5 Bb6** Best, as **8... dxe5 9 0-0** threatens **10 Rd1. 9 Nbd2** Neither **9 exd6** nor **9 Bb5** gains the advantage. **Na5 10 Qc2 Nxc4 11 Nxc4 d5!** Black has tried **11... dxe5** and **11... Qe6**. The text improves by grabbing control of the light squares. **12 Nxb6 axb6 13 0-0 dxe4 14 Qxe4 Qg4!** The opposite Bishops give Black a slight edge. **15 Qe3 Ne7 16 Nd4 0-0 17 h3 Qg6 18 f4 c5** Black wants the f5 square. **19 Nb5 Rd8 20 Nd6 Nf5 21 Nxc8** Clever, but Black's Knight will prove too strong. His only chance is the passive **21 Nxf5 Bxf5 22 Kh2. Raxc8 22 Qf3 h5 23 Qxb7 Rc6!** Cutting off the White Queen from the defense. **24 Qa6 c4! 25 Qa4 Rd3 26 Rb1 Rxb3 27 e6** No better is **27 Qxc6 Qxc6 28 gxh3 Qg6+ Rxe6 28 Qxc4 Qg3, White Resigns.** The winning threat is **29... Qh2+ 30 Kf2 Rf3+! 31 Kxf3 Qg3** mate. Yakov Estrin is a former world correspondence champion.

IM Ivanov (Canada)-IM Aaron (India), British Commonwealth Championship 1984: 1 d4 d5 2 c4 c6 3 Nf3 Nf6 4 cxd5 The Exchange Variation of the Slav Defense. **cxd5 5 Nc3 Nc6 6 Bf4 Bf5** Maintaining the symmetry. Also good is **6... e6. 7 e3 e6 8 Bb5 Nd7 9 Qa4 Qb6 10 Nh4! Bg6 11 Nxg6 hxg6 12 e4!** Injecting life into a dull position. **dxe4?** Black must try **12... Nf6** or **12... Bb4. 13 d5 Nc5 14 dxc6!** **bxg6** Of course, **14... Nxa4 15 cxb7+ Ke7 16 bxa8Q** wins for White. **15 Bxc6+ Ke7** Expecting counterplay with **... Nc5-d3+**. **16 0-0-0! Nxa4 17 Rd7+ Ke8** After **17... Kf6 18 Nxe4+ Kf5 19 Rxf7+ Kg4**, White wins plenty of material with **20 h3+ Rxh3** (else mate in two) **21 gxh3+ Kh5 22 Bxa4. 18 Bxa4 Bb5** Black is helpless. **19 Rxa7+** Even stronger than **19 Rb7+ Kd8 20 Rxa8+ Ke7 21 Rxh8 Bxc3 22 bxc3 Qxf2 23 Bg5+ f6 24 Rd1!, Black Resigns.**