

# NORTHERN CALIFORNIA CHESS NEWSLETTER

Vol. 1, No. 137

May 22, 1998

One year later:

## WHY YOU SHOULD "ALWAYS" PLAY UP

The Classic Article

32 <sup>nd</sup> ANNUAL LERA MEMORIAL DAY CHAMPIONSHIPS (According to their promotional mailer)	31 <sup>st</sup> ANNUAL LERA MEMORIAL DAY CHAMPIONSHIPS (According to their <i>Chess Life</i> announcement)
--	--

These games are dedicated to Clarence Lehman on behalf of all 'B' players at the Walnut Creek Chess Club. It's just too bad Newey didn't play up just one section, so he could understand the reasons his opponents got blown off the board.

**Upset of the week:** Richard Newey (1751)-Mike Arné (2258), Sicilian D 1.e4 c5 2.Nf3 Nc6 3.c3 d5 4.exd5 Qxd5 5.d4 e6 6.Be2 cxd4 7.OO Nf6 8.cxd4 Be7 9.Nc3 Qd7 10.Nb5 Qd8 11.Bf4 Nd5 12.Bg3 a6 13.Nc3 OO 14.Rc1 Bd6 15.Ne4 Bxg3 16.hxg3 Nce7 17.Qd2 b6 18.Qg5 Bb7 19.Bd3 f6 20.Qh5 g6 21.Qh3 Qd7 22.Qh6 Nf5 23.Qd2 Nd6 24.a3 Nxe4 25.Bxe4 Rac8 26.Qh6 Ne7 27.Bxb7 Qxb7 28.Rce1 Qd5 29.Re2 Rc6 30.Rfe1 Nf5 31.Qd2 Kg7 32.g4 Ne7 33.g5 f5 34.Re5 Qc4 35.Qf4 Rd8 36.Qh4 Rcd6 37.R5e3 Qc8 38.Qh6+ Kg8 39.Ne5 R8d7 40.Nxd7 Qxd7 41.Qh2 Nd5 42.R3e2 Nc7 43.Rc2 Nb5 44.Rec1 Qe7 45.Rc8+ Rd8 46.Qb8 Rxc8 47.Rxc8+ Kg7 48.f4 Qd7 49.Rg8+ resigns

Richard Newey (1751)-Thomas Maser (2110), 2ND 1.e4 e5 2.Nf3 Nc6 3.Bc4 Nf6 4.Ng5 d5 5.exd5 Na5 6.Bc6+ c6 7.dxc6 bxc6 8.Be2 h6 9.Nh3 Bd6 10.d3 OO 11.Nc3 Be6 12.Bf3 Qd7 13.Ng1 Rab8 14.a3 c5 15.Nge2 Rfd8 16.OO c4 17.Ne4 Be7 18.Bd2 Qc7 19.Qe1 Nc5 20.Nxf6+ Bxf6 21.Qc1 Qd7 22.Be4 cxd3 23.cxd3 Rbc8 24.Nc3 Nd4 25.Qd1 Bg4 26.f3 Be6 27.Be3 Nb3 28.Rb1 Bg5 29.Bxg5 hxg5 30.g4 Nd4 31.Qe1 g6 32.Bxg6 fxg6 33.Qxe5 Bd5 34.Qxd4 resigns

The following article is reprinted by permission of the Berkeley Chess Club *Bulletin*. It first appeared in Issue 85, one year ago this weekend. In order to emphasize the timelessness of the included proof and advice, we have simply photocopied the original and not reset the type. Errors should therefore be attributed to the *Bulletin*, and not to the *Newsletter* (or our new, improved, copy editor). However, please make the following substitutions: Newey for Handler, 2258 for 2257, 2110 for 2210, 40 rating points for 60 rating points, and Lehman for Lehman. And now, without further ado:

### WHY YOU SHOULD "ALWAYS" PLAY UP

And, more specifically, in the Open Section.

But first let me just warn anyone intending to write letters of dissent not to ignore the quotation marks in the title, as so many did regarding the now-classic article, "Why You Should 'Never' Resign."

Thank you.

The advice to play in the open section is based on the premise that the typical tournament chessplayer is striving to increase his rating as much as possible in both the short term and the long term. It would therefore not apply to someone of 2100 strength who wants his rating to dip below 2000 so he can win money against weaker players (i.e., to cheaters).

Theoretically, it doesn't matter in which section you play. The USCF's Win Expectancy Formula (WEF)--and the corresponding Win Expectancy Tables--ensures that your rating will accurately reflect your ability regardless of whom you play by

- 1) Rewarding you more for defeating a stronger player;
- 2) Penalizing you less for losing to a stronger player;
- 3) Penalizing you more for losing to a weaker player; and
- 4) Rewarding you less for defeating a weaker player.

For example if you play one hundred games against players rated 400 points higher you should score 9.1% of the points, in which games you would gain 291 points (regardless of the breakdown between wins and draws); whereas your opponents should score 90.9% of the points, in which games you would lose 291 points (regardless of the breakdown between draws and losses).

If you play one hundred games against players rated 200 points lower you should score 76% of the points, in which games you would gain 243 points; whereas your opponents should score 24% of the points, in which games you would lose 243 points.

As you are more likely to lose a few points or gain a few; and less likely to gain a lot or lose a lot; in the long run, your rating will end up being what it would have been regardless of who your opponents are, were, or might have been. Given this rating neutrality, it only makes sense to always play in your own section so you'll have a chance of winning some money.

But that's all "theoretically." Now let me tell you the truth.

The Win Expectancy Formula is wrong.

I'll explain why in a moment, but first consider three possibilities for win expectancies found to be flawed:

1) The formula and tables are disadvantageous to the higher-rated player; that is, they overestimate the better player's chance of winning, and thus overreward the weaker player (thus overpenalizing the better player) when an upset occurs. If this is true, the best way to maximize one's rating is to play the strongest possible opponents at every opportunity.

2) The formula and tables are advantageous to the higher-rated player; that is, they overestimate the weaker player's chance of winning, and thus underreward the weaker player (thus underpenalizing the better player) when an upset occurs. If this is true, the best way to maximize one's rating is to play the weakest possible opponents at every opportunity.

3) The formula's advantageousness shifts based on rating difference. It cannot be both (1) and (2) above at the same time, but it could possibly be (1) for greater rating differences and (2) for lesser rating differences, or vice versa. That's unlikely with such a simple formula as is in question here. Besides, we know it's not the case because we know which IS true.

Of the possibilities listed, the first is evidently the case. Furthermore, it is apparent that the greater the difference in ratings, the more disadvantageous to the higher-rated player the formula is. Clearly it cannot be off for two players with identical ratings, for how could a formula be disadvantageous to one 1600-rated player without being simultaneously advantageous to his 1600-rated opponent? Thus, we will assume that the formula has zero theoretical inaccuracy when the rating difference is zero.

(However, the two players may not be of equal ability. If one has attained his 1600 rating by playing mostly players rated 1300-1700 while the other has attained his by playing mostly players rated 1700-2100, the first player is probably a better player; for the second player has received more points than he deserves for the games he has won, taking advantage as he has of the flaw in the WEF.)

Now for that explanation:

The Win Expectancy Formula and its resultant tables are wrong because the USCF Rating System uses the same formula to define strength as to predict it. They consider their formula both the cause and effect. According to the USCF, "The basic theory of the USCF's rating system is that the difference between the ratings of players is a guide to predicting the outcome of a contest between the two players. The specific formula has been worked out according to statistical and probability theory."

Well, that sounds like the problem right there. Evidently they never took the trouble to find two players, one of whom scored 91% of the points between the two, and set their ratings 400 points apart; instead, they set two players' ratings 400 points apart and decided, "Therefore, the better player will score 91% of the points--the formula says so."

The actual formula is Win Expectancy =  $1/(10^{\Delta R/400} + 1)$  where  $\Delta R$  is the rating difference. I don't know exactly which part of the formula is flawed because I don't have access to the REAL results--i.e., USCF's records of exactly what percent of the points are scored by the 400-point underdog (and even whether that percentage changes depending on whether the matchup is 1100 v 1500 or 1700 v 2100). This is clearly a case, though, in which empirical evidence is more reliable than a scientific formula, because what the USCF is attempting to predict is precisely those empirical results.

Using such records, an accurate formula could be devised (actually, derived); though it would likely not be such a simple formula. Chances are good for example that a 200-point difference at 1100 points is a lot different from a 200-point difference at 1800 points.

All of this is instinctively known by tournament players overconcerned with their ratings; this is why no one likes to face a player rated 400 points lower, whereas no one minds and many look forward to facing players 400 points higher: against the lower-rated, the result will be +3, -13, or -29 depending on whether you win, draw, or lose; against the

higher-rated, the result will be +29, +13, or -3.

Yet were the WEF accurate, there would be no such preference; for the player could expect ten wins in eleven games against the lower-rated, and only one win (or two draws) in eleven against the higher. Thus, facing the lower-rated player would virtually assure one of gaining three points; whereas against the higher-rated player, it's practically three points down the drain. These statistics do not hold; the expected results do not come about; this, too, is instinctively known.

The logical step, then, is for any player interested in increasing his rating in the short term to play in the open section whenever possible, for over an extended number of games he will win more than predicted by the WEF and would thus be rewarded more than he is penalized.

For such a player the 800-point rating difference is even more attractive than the mere 400, for there his win expectancy is only 0.010--one win in a hundred (or one draw in fifty).

(Someone--I forget who, maybe Phil Freihofner--recently said it's better to play someone rated 400 points higher than 800 because you're much more likely to win and you gain almost as many points--29 instead of 31. However, look at the other side of that: You're not much less likely to lose [91% to 99%] but your rating goes down more: 2.9 instead of 0.32. If you lose ten in a row, you lose 29 points to the +400, but only 3 against the +800. The advantage in playing the +800 lies in the WEF being more inaccurate at the 800-point difference than at the 400.)

Sure, there are experts galore who will swear they could reel off a hundred straight wins against players rated 1200. Some of them might--some of them are really 2300 strength.

But the real reason most experts (and masters!) don't like to play low-rated players is not for the claimed reason that it's not a competitive game--it's because they don't want to lose rating points 32 at a time! They, too, instinctively know that the tables and formula are wrong.

One year into my tournament chess career (October 1994), my published rating was 1181 (my actual rating bottomed out at 1169). There were four November tournaments I could attend that year, and two of them (Capps Memorial and Fresno County Championship) were one-section only; the other two (Livermore and LERA) were sectionals.

I knew from previous experience (for example the People's Tournament, where the bottom section went all the way up to 1599; and from sparsely-attended quads, in which I'd faced players rated in the 900's as well as the 1600's) that I could play good games with higher-rated players and bad games against lower-rateds; so I entered all four tournaments, and specified "open" section in the two sectionals.

At Livermore I won my first game by forfeit and got smashed in 21 moves in game two, but beat Michael Anderson (2058) in round three (gaining 3 3/4 points) and lost a well-played game in the fourth.

At Mechanics I faced no one over 1886 and at Fresno no one over 1550 (pairings were accelerated by two rounds) and even though I tied for second in C-money at Fresno, my rating went up only a little.

At LERA I faced one master, four experts, and an A player and scored just one draw, but my rating for the tournament went up more than 15 points. Before round two I came upon a discussion in which I heard expert Clarence Lehman telling Micah Fisher-Kirshner that it was reasonable for A players and young rising B players to enter the open section but that low-rated adults were just wasting their time and forcing masters and experts to waste a game playing non-competitive chess, so it was fun to draw against Clarence in round three.

In my next LERA tournament I again entered the open section. I faced a master, two experts, an A player, and a B player and again scored one draw against an expert.

Thus, in my first ten games against players rated 800 (or more) points higher than myself, I scored a win and two draws. Since the win expectancy at -800 points is .01, I had to lose my next 190 consecutive games against players rated 800 points higher in order to balance the WEF. Instead, I have continued vastly outpacing my win expectancy against significantly higher-rated players and, I suspect, not living up to my win expectations against lower-rated players. And I'm no anomaly; virtually every player I see playing up several sections enjoys similar "unexpected" success.

An even better indication is the first-round results in any large one-section tournament, where the rating differences are large and all but uniform down the list. Consider a single section with 200 entrants: Round 1 might include games between players rated 2500 and 1700 on board 1 and players rated 1800 and 1000 on board 90 (a few very low or unrated players might throw the bottom off a bit, but the pattern will still exist).

In such a tournament, the results of the first round can be--and usually are--a refutation of the WEF, and they're more meaningful than one individual's results because they take into account a wide cross-section of high-rated players and a wide cross-section of low-rated players. Second and (less commonly) third rounds can reveal similarly "unexpected" results between players with lesser rating differences, but the farther into a tournament you research, the less uniform the rating differences are--because the number of upsets has accumulated.

Encouraged by my own success in open sections, I suggested to other players that they play up. Richard Newey has long been doing so, and at the People's Tournament in 1996 defeated both Jordy Mont-Reynaud and Vinay Bhat; but others have been reluctant.

Dwight Kearney and Andrew Handler, for example, continued playing in their own section (usually) or up one section (Class Struggle, 1996). While I "struggled" at 1446 in the open section and defeated players rated 1844 and 2100 (and missed a draw at move 53 against a 2008), Kearney and Handler got trounced and lost points in the B section (but not as many as they would have lost in their own C section). Based on these results Handler told me, "Now I fear playing you," and both came to agree with me that the open section is the right choice.

Unfortunately three weeks later everyone else had the same idea, so the open section at the Waterfront had a lot of C, D, and E players in it which sort of defeated our purpose. Thus, Handler and Kearney went back to B & C sections, while Newey continued his mild to moderate success in open sections and I foolishly gave in to the temptation to try to win money (See "Learning My Lesson (?)", Issue 71).

After Newey beat two experts and I drew an expert and beat an A player at Livermore three weeks ago, Dwight and Andrew again agreed that the open section is the place to be. But Handler has a history of saying so and wimping out, so I wasn't sure if he'd play in the open section at LERA or not.

But this time he did! Newey and I went winless and scored our only points by drawing against each other, but because all our other opponents were masters and experts we lost only five or six rating points each. Andrew Handler, on the other hand, scored wins against players rated 2257 and 2210, and so gained roughly 60 rating points.

So now I fear playing Handler; but he still fears playing Monty Peckman (999), because the WEF is wrong!

And that's the reason playing in the open section helps increase your rating in the short term.

But it increases it in the long term, too, by giving you a chance to experience higher-quality chess and learn lessons over-the-board from players with greater ability. This was in fact my primary reason for entering my first open sections thirty months ago: in order to increase my rating in the long run, I wanted to improve my skill--which I thought more likely facing players who could take advantage of my mistakes, rather than being able to blunder and still win (in which case I'd have a higher rating, but that blunder would still be part of my misunderstanding of chess).

Others have disagreed with this theory; but they're wrong.

Clarence Lehman suggested just before this month's Livermore Open that Rich, Dwight, and I play up just one section so we'd "understand the reasons [we] got blown off the board." Since Rich and I scored a combined 3 1/2 out of 8, we might ignore his advice in the future.

So to improve your skill and increase your rating, play in the open section; if you've been sandbagging in search of that big payoff, play down a section.

# GAMES FROM LERA

We hate to do this to you, but we're going to skip on the LERA games this week. We collected a lot of game scores and played over a few, but we didn't have time to play over enough of them and we didn't have enough time to input many of them. What with the sudden departure of Tara Gardner and all.

Most of the game scores we are including have been provided by Richard Shorman—not only the proofreading, but the typesetting as well. You'll be able to tell those games by the different look—we simply took the printouts provided and cut-and-pasted them into the *Newsletter* before printing. If not for Mr. Shorman (three cheers), there'd be almost no LERA games at all.

To begin, though, those few games we had to input ourselves, no matter how long it took:

**B.47 Chris Waroff (1093)-Matthew Haws (1597)** (3), Alapin G 1.e4 e6 2.d4 d5 3.Be3 Nf6 4.Nd2 dxe4 5.f3 Nc6 6.fxe4 Bb4+ 7.c3 Ba5 8.Ng3 Bd7 9.Bd3 OO 10.OO Ng4 11.Qe2 Nxe3 12.Qxe3 Bb6 13.e5 Ne7 14.Bxh7+ Kxh7 15.Ng5+ Kg8 16.Qh3 Re8 17.Qh7+ resigns

**B.43 Inn Ho Sohn (1268)-Patrick Nichols (1480)** (2), CKD 1.e4 c6 2.c4 e5 3.Nf3 Nf6 4.Nxe5 Qe7 5.d4 d6 6.Nf3 Qxe4+ 7.Be2 Be7 8.OO Bf5 9.Re1 Qc2 10.Nc3 OO 11.d5 draw. By what—insufficient material?

**B.1 John Grefe (2503)-Mladen Vucic (2451)** (6), Zukertort O 1.Nf3 d5 2.g3 Nf6 3.Bg2 c6 4.OO Bf5 5.d3 draw. The winner stood to gain \$67, whereas the loser would have lost \$267 (and it looked like more during move 5). It would have made better economic sense to agree to an unrated draw before risking move 1. Now that the USCF recognizes unrated draws for just this purpose, such agreements no longer constitute cheating—but it's still cheating to agree to a draw during the game and before a serious contest has begun (see rules 14B6 and 20L). We wonder whether the senior masters are aware of the new rule allowing for unrated draws, and whether they think playing five moves legally satisfies the requirements (it doesn't).

And now that we're off our soapbox, it's time for the games Mr. Shorman gave us. Again, we regret not being able to provide all the games we collected, many of which were marked Good Game, Brilliancy, Brill Candidate, Brilliancy, and Brillianty. No, we're not kidding...but we hope the player who wrote it was.

## B R I L L I A N C Y P R I Z E G A M E S

Harris, Orin - Nguyen, Chung [B95]  
 LERA Memorial Day Ch, Rd 4 UNR. 1223 U  
 1 e4 c5 2 Nf3 d6 3 d4 cd4 4 Nd4 Nf6 5  
 Nc3 a6 6 Bg5 e6 7 Bd3 Be7 8 f4 Qc7 9  
 Qe2 Nbd7 10 Nf3 b5 11 e5 Ng8 12 Be7  
 Ne7 13 ed6 Qd6 14 Be4 Ra7 15 g3 Rc7 16  
 Qd3 Qb4 17 0-0-0 0-0 18 Bh7 Kh8 19 Ng5  
 Nc5 20 Qd8 Nd7 21 Rd7 Nc6 22 Nf7 Kh7  
 23 Qh4 Kg6 24 Qg5 Kh7 25 Qh5 Kg8 26  
 Qh8 mate 1-0

Fuentes, Romulo - Bui, Minh [B96]  
 LERA Memorial Day Ch, Rd 3 2229 1840 M  
 1 e4 c5 2 Nf3 d6 3 d4 cd4 4 Nd4 Nf6 5  
 Nc3 a6 6 Bg5 e6 7 f4 Qc7 8 Qf3 Nbd7 9  
 0-0-0 b5 10 Bf6 gf6 11 e5 Nb6 12 Bb5  
 ab5 13 Ndb5 Qb8 14 ed6 h5  
 [14 ... Kd8 15 Qh5 Qb7 16 Nc7 Nc4  
 17 b3 Bd6 18 Qf7 Bd7 (18 ... Qc7  
 19 Qf6 Ke8 20 Qh8+-) 19 Na8 Rf8 20  
 Qh7 Qb4 21 bc4 Qc3 22 Rd3 Qa5 (22  
 ... Qa1 23 Kd2 Qh1 24 Rd6 Qg2 25  
 Kc3 Qf3 26 Kb2 Qb7 27 Nb6+-) 23  
 Kb2 Qa8 24 Rhd1 Qa4! 25 Qe4!+-]  
 15 Nc7 Kd7 16 Na8 Na8 17 Ne4 Kd8 18  
 Qc3 Rh6 19 Nf6 Bg7 20 Qa5 Qb6 21 Qb6  
 Nb6 22 Ne4 Nc4 23 b3 Ne3 24 Rd3 Nd5 25  
 Rf1 Rg6 26 Rg3 Ba6 27 c4 Bh6 28 Rg6  
 fg6 29 Nc5 Bf4 30 Rf4 Nf4 31 g3 Ne2 32  
 Kd2 Ng3 33 hg3 Bc8 34 Ke3 g5 35 Ne4  
 Kd7 36 c5 Kc6 37 b4 h4 38 Ng5 hg3 39  
 Kf3 Kb5 40 Kg3 Bd7 41 a3 Ka4 42 Ne6  
 Ka3 43 Nf8 Resigns 1-0

Childress, Jason - Aigner, Michael [C54]  
 LERA Memorial Day Ch, Rd 3 1962 2094 X  
 1 e4 e5 2 Nf3 Nc6 3 Bc4 Bc5 4 c3 Nf6 5  
 d3 0-0 6 0-0 d5 7 ed5 Nd5 8 b4 Be7 9  
 b5 Na5 10 Ne5 Bf6 11 f4 Nc3 12 Nc3 Qd4  
 13 Kh1 Be5 14 fe5 Nc4 15 dc4 Qc3 16  
 Qf3 Qa1 17 Ba3 Qe5 18 Bf8 Be6 19 Bb4  
 Bc4 20 Qb7 Bd5 21 Resigns (because  
 of 21 Qa6 Qe4 22 Rg1 Qb4) 0-1

Krasnov, Steven - Coen, Chuck [A11]  
 LERA Memorial Day Ch, Rd 1 1895 1674 A  
 1 Nf3 d5 2 c4 c6 3 e3 Nf6 4 Nc3 e6 5  
 a3 Nbd7 6 b4 a5 7 b5 c5 8 d3 Nb6 9 Bb2  
 Be7 10 Be2 0-0 11 0-0 Qc7 12 Rc1 Rd8  
 13 Qc2 dc4 14 dc4 e5 15 Na4 Nbd7 16 b6  
 Qd6 17 Rfd1 Qb8 18 Bc3 h6 19 Nc5 Bc5  
 20 Be5 Ne5 21 Rd8 Bf8 22 Nd4 Nc6 23  
 Nc6 bc6 24 Rb1 Qb7 25 Qd1 g6 26 Qd6  
 Nd7 27 Bf3 Kg7 28 Qc6 Nc5 29 Rf8 Qc6  
 30 Bc6 Rb8 31 Re8 Bd7 32 Rb8 Resigns

Colonia, Roberto - Ho, Matthew [D00]  
 LERA Memorial Day Ch, Rd 2 1700 1585 B  
 1 d4 d5 2 e3 Nf6 3 Bd3 c5 4 c3 Nc6 5  
 f4 Bg4 6 Nf3 e6 7 0-0 Bd6 8 Qe1 Qc7 9  
 Ne5 Bh5 10 Nd2 0-0-0 11 a4 Nd7 12 Qg3  
 f6 13 Nc6 Qc6 14 Qg7 Rdg8 15 Qh6 Bg6  
 16 Bb5 Qc7 17 Qh4 Be7 18 Qh3 Bf5 19  
 Qf3 h5 20 e4 Bg4 21 Qe3 cd4 22 cd4 Nb6  
 23 h3 e5 24 fe5 fe5 25 a5 ed4 26 ab6  
 de3 27 bc7 ed2 28 Bd2 Bh3 29 Rf2 Bc5  
 30 Rc1 Rg2 31 Kh1 Bf2 32 ed5 Rhg8 33  
 d6 Rg1 34 Rg1 Rg1 35 Kh2 Bd7 36 Be2  
 Bc6 37 d7 Kd7 38 c8Q Kc8 39 Resigns

Odegaard, Carl - Mutuc, Jonas [B22]  
 LERA Memorial Day Ch, Rd 3 1544 1307 C  
 1 e4 c5 2 c3 e6 3 d4 cd4 4 cd4 Bb4 5  
 Nc3 a6 6 Nf3 Qc7 7 Bd2 Ne7 8 Bd3 Nbc6  
 9 0-0 0-0 10 Rc1 Qd8 11 d5 ed5 12 ed5  
 Na7 13 Bh7 Kh7 14 Ng5 Kg6 15 Qg4 f5 16  
 Qb4 d6 17 Rfe1 Rf6 18 Qh4 f4 19 Bf4  
 (Missing mate in three with 19 Qh7  
 Kg5 20 Ne4 Kg4 21 Qh3.) 19 ... Rf4  
 20 Qf4 Bf5 21 Ne6 Be6 22 Re6 Kh7 23  
 Qh4 Kg8 24 Re7 Resigns 1-0

Eagles, Latrael-Cisneros, Alberto  
LERA Memorial Day Ch, Rd 4 1666 1547 B  
1.e4 e5 2.f4 d5 3.exd5 e4 4.d3 Nf6  
5.Nc3 Bb4 6.dxe4 Nxe4 7.Nge2 0-0 8.Qd4  
Bxc3+ 9.bxc3 Re8 10.Be3 c5 11.dxc6 Qc7  
12.Ng3 Nxc6 13.Qd3 Nc5 14.Qe2 Bg4  
15.Qxg4 Rxe3+ 16.Be2 Rae8 17.0-0 R8e6  
18.f5 Rh6 19.f6 Rg6 20.Qc4 Ne5 21.Qd4  
Rgxg3 22.hxg3 Rxe2 23.Rfe1 Nf3+ 24.Kf1  
Nxd4 25.cxd4 Rxe1+ 26.Rxe1 gxf6  
27.dxc5 Qxc5 28.Re2 Qc4 29.Ke1 Qxa2  
30.Kf2 a5 31.c3 Qb3 32.Re8+ Kg7 33.Rb8  
a4 34.c4 a3 35.c5 Qb2+ 36.Kf3 a2 37.c6  
Qc3+ 38 Resigns 0-1

Odegaard, Carl-Sohn, Inn Ho  
LERA Memorial Day Ch, Rd 1 1544 1268 C  
1.e4 e5 2.Nf3 d5 3.exd5 Bd6 4.Bb5+ c6  
5.dxc6 bxc6 6.Be2 f5 7.d3 Nf6 8.Nc3  
0-0 9.Bg5 Be6 10.0-0 Nbd7 11.d4 e4  
12.Nd2 Qe8 13.Bc4 Bxc4 14.Nxc4 Bxh2+  
[14...Bxh2+?! 15.Kxh2 Ng4+ 16.Kg1  
Qh5 17.Bf4 g5 18.f3 exf3 19.gxf3  
gxf4 20.fxg4 fxg4 21.Ne4 Rae8  
22.Ncd6 Re6 23.c3 Rh6=]  
15.Kh1 Ng4 16.g3 Qh5 17.Kg2 Qxg5  
18.Rh1 Rae8 19.Rxh2 Nxh2 20.Kxh2 Rf6  
21.Kg2 f4 22.Ne5 f3+ 23.Kg1 Rh6  
24.Nxe4 Qh5 25.Qxf3 Qh2+ 26.Kf1 Nxe5  
27.dxe5 Qh1+ 28.Ke2 Qxa1 29.Qb3+ Kh8  
30.f4 Rh2+ 31.Nf2 Rd8 32.e6 Qd1+  
33.Ke3 Qe1+ 34.Kf3 Rxf2+ 35.Kg4 Qe2+  
36.Kg5 Rd5+ 37.f5 Rdx5+ 38.Kh4 Rh2+  
mate 0-1

Lehman, Clarence-Musselman, Ray  
LERA Memorial Day Ch, Rd 2 2053 2009 X  
1.e4 e6 2.d3 d5 3.Nd2 c5 4.Ngf3 Nf6  
5.g3 Nc6 6.Bg2 Be7 7.0-0 0-0 8.Re1 b5  
9.e5 Nd7 10.Nf1 a5 11.h4 Ba6 12.N1h2  
b4 13.Bf4 Bb5 14.g4 a4 15.g5 c4 16.h5  
cxd3 17.cxd3 Nc5 18.Bf1 d4 19.Ng4 Kh8  
20.Qd2 Rc8 21.Kh2 Qd5 22.Be2 Bd8  
23.Nh4 b3 24.Bf3 Qd7 25.Bxc6 Rxc6  
26.axb3 Nxb3 27.Qb4 Rc5 28.Qa3 Be7  
29.Nf6 Qb7 30.Ne4 Rc2 31.Nd6 Qd5  
32.Rad1 Bc6 33.Kg3 Kg8 34.Qa2 h6  
35.Ne4 hxg5 36.Nxg5 f6 37.Ngf3 Bb4  
38.Qb1 Qc5 39.Ng6 Bxf3 40.Kxf3 Bxe1  
41.Rxe1 Rf7 42.Kg3 Kh7 43.Qd1 Rxb2  
44.Re2 a3 45.Rxb2 axb2 46.Qxb3 fxe5  
47.Qb8 exf4+ 48.Kh4 Rf8 49.Nxf8+ Qxf8  
50.Qxf8 b1Q 51.Qxf4 Qxd3 52.h6 Qf5  
53.Qxd4 Kxh6 54.Qe3+ g5+ 55.Kg3 Kg6  
56.Kg2 g4 57.Kg3 e5 58.f3 Kh5 59.fxg4+  
Qxg4+ 60.Kf2 Drawn +-+

Childress, Jason-Da Cruz, Michael  
LERA Memorial Day Ch, Rd 2 1962 2048 X  
1.e4 e6 2.d4 d5 3.Nd2 c5 4.Ngf3 cxd4  
5.Nxd4 Nf6 6.Bb5+ Bd7 7.exd5 Bxb5  
8.Nxb5 a6 9.Nc3 Nxd5 10.Nde4 Bb4  
11.Bd2 Nxc3 12.Nxc3 0-0 13.Qg4 Nc6  
14.0-0-0 Qa5 15.a3 Bxa3 16.bxa3 Qxa3+  
17.Kb1 b5 18.Na2 b4 19.Bc1 Qa5 20.Bb2  
g6 21.Qf3 Qb5 22.Qf6 e5 23.Rd6 b3  
24.cxb3 Qxb3 25.Rxc6 Rfb8 26.Qxe5 Qd3+  
27.Ka1 Qb1+ 28.Rxb1 Resigns 1-0

Kaugars, Agnis - Izumikawa, Burt [B23]  
LERA Memorial Day Ch, Rd 1 2200 2385 M  
1 e4 c5 2 Nc3 Nc6 3 f4 g6 4 Nf3 Bg7 5  
Bb5 d6 6 Bc6 bc6 7 d3 e6 8 0-0 Ne7 9  
Qe1 Ba6 10 f5 gf5 11 Bg5 Qb6 12 Be7  
Ke7 13 e5 de5 14 Ne5 c4 15 Kh1 Be5 16  
Qe5 f6 17 Qe2 Qb2 18 Rae1 e5 19 Nd1  
cd3 20 Qf2 Qc2 21 Qf5 Raf8 22 Ne3 Qc5  
23 Qe4 d2 24 Nf5 Kd7 25 Rd1 Bf1 26 Rf1  
Kc7 27 Ng7 Qd5 28 Qg4 f5 29 Qd1 Rhg8  
30 Resigns 0-1

Aigner, Michael - Livesey, Nigel [A03]  
LERA Memorial Day Ch, Rd 2 2094 1800 X  
1 f4 d5 2 Nf3 Nf6 3 e3 g6 4 d4 Bg7 5  
Bd3 Bg4 6 Nbd2 Nbd7 7 0-0 0-0 8 c3 c5  
9 h3 Bf3 10 Qf3 cd4 11 ed4 Rb8 12 Qe2  
e6 13 Nf3 Ne8 14 Ne5 Nd6 15 Re1 Nf6 16  
Ng4 Nfe4 17 Nf2 f5 18 Be3 b5 19 Ne4  
fe4 20 Bc2 b4 21 Bb3 bc3 22 bc3 Rc8 23  
Rac1 Nc4 24 Rf1 Qd7 25 Bd2 Rc7 26 Rb1  
Na3 27 Rbc1 Rfc8 28 g4 a5 29 Kh1 a4 30  
Bd1 Bd4 31 Ba4 Qa4 32 cd4 Qd4 33 Qa6  
Rc1 34 Bc1 Qc4 35 Qe6 Kg7 36 Bb2 d4 37  
Qe5 Kf7 38 Rc1 Qc1 39 Bc1 Rc1 40 Kg2  
Rc2 41 Kf1 Rc1 42 Kf2 Rc2 43 Kg3 d3 44  
Qd5 Kg7 45 Qb7 Kg8 46 Qa8 Kg7 47 Qa7  
Kh8 48 Qa3 d2 49 Qf8 mate 1-0

Lieberman, Donald - Whitaker, Robert [B21]  
LERA Memorial Day Ch, Rd 2 1854 2000 X  
1 e4 c5 2 d4 cd4 3 c3 dc3 4 Nc3 d6 5  
Nf3 Nc6 6 Bc4 Nf6 7 0-0 e6 8 Qe2 Be7 9  
Rd1 Qc7 10 h3 0-0 11 Bg5 a6 12 Bf4 b5  
13 Bb3 Bb7 14 Rac1 Qb8 15 Bc2 Rd8 16  
e5 de5 17 Ne5 Rd1 18 Rd1 Ne5 19 Be5  
Qe8 20 Bf6 Bf6 21 Ne4 Be4 22 Qe4 g6 23  
b3 Rd8 24 Rd8 Qd8 25 Qd3 Qa5 26 a4 ba4  
27 ba4 Qe1 28 Qf1 Qd2 29 Qd1 Qf4 30  
Qe2 a5 31 g3 Qc1 32 Qd1 Qb2 33 Qb1 Qc3  
34 Qd1 Bd4 35 Qe2 Qg3 36 Kf1 Qh3 37  
Ke1 Bc3 38 Resigns 0-1

Whitaker, Robert - Aigner, Michael [A21]  
LERA Memorial Day Ch, Rd 1 2000 2094 X  
1 c4 f5 2 Nc3 Nf6 3 Nf3 d6 4 e3 e5 5  
d4 e4 6 Nd2 Nc6 7 Be2 Bd7 8 0-0 Be7 9  
f3 ef3 10 Bf3 0-0 11 Nd5 Nd5 12 Bd5  
Kh8 13 Qh5 g6 14 Qe2 Bf6 15 Nb3 Qe7 16  
Bc6 Bc6 17 d5 Bd7 18 Qd3 Rad8 19 Nd4  
c5 20 Nf3 Rde8 21 Qa3 a6 22 Re1 b5 23  
cb5 ab5 24 Qd3 Qg7 25 Re2 Re4 26 a3  
Rfe8 27 Ra2 g5 28 b3 g4 29 Ne1 Qh6 30  
Nc2 Be5 31 g3 Qf6 32 Ne1 c4 33 bc4 bc4  
34 Qc2 Qf7 35 Qd1 Bb5 36 a4 Ba6 37  
Rec2 c3 38 Ng2 Bc4 39 Ra3 Bd5 40 Rcc3  
Rb4 41 Rd3 Bf3 42 Qd2 Qb7 43 Nf4 Rc8  
44 Kf2 Bh1 45 Rd6 Bd6 46 Qd6 Qf3 47 Resigns

Webb, Euphorion - Andrews, Uri [C36]  
LERA Memorial Day Ch, Rd 2 1677 1657 B  
1 e4 e5 2 f4 ef4 3 Nf3 d5 4 ed5 Nf6 5  
Bb5 c6 6 dc6 Nc6 7 d4 Qa5 8 Nc3 Nd5 9  
0-0 Nc3 10 Bc6 bc6 11 bc3 Qc3 12 Bf4  
Be7 13 Re1 Be6 14 Be5 0-0 15 Kh1 Rad8  
16 Qe2 Bg4 17 Bg7 Bf3 18 Qf3 Qf3 19  
gf3 Kg7 20 Re7 Rd4 21 Ra7 Rfd8 22 Rc7  
Rd1 23 Rd1 Rd1 24 Kg2 Rd2 25 Kg3 Rc2  
26 a4 Ra2 27 Rc6 Ra4 28 Drawn +-+

Palmeri, Ralph - Anderson, Duane [A05]  
LERA Memorial Day Ch, Rd 1 1798 1646 B  
1 Nf3 Nf6 2 b3 g6 3 Bb2 Bg7 4 e4 d6 5  
d3 0-0 6 Nbd2 Nc6 7 Be2 e5 8 0-0 Nh5 9  
g3 Bg4 10 Nc4 f5 11 ef5 b5 12 Ne3 Bh3  
13 fg6 hg6-14 Re1 Qf6-15 Nd5 Qf7-16 c4-  
Bg4 17 Kg2 Rab8 18 h3 Bf3 19 Bf3 Nd4  
20 Bd4 ed4 21 Re7 Qf5 22 Rc7 Qg5 23  
Ra7 bc4 24 bc4 Rb2 25 Qe1 Qg3 26 Kf1  
Qh3 27 Bg2 Rff2 28 Qf2 Rf2 29 Kf2 Qg3  
30 Kg1 Qd3 31 Rc7 Ng3 32 a4 Be5 33 Re1  
Ne2 34 Re2 Qe2 35 a5 Qe1 36 Bf1 Qg3 37  
Bg2 d3 38 Resigns 0-1

~~Guerrero~~  
 Guerrero, Cody - Mejia, Jose [A15]  
 LERA Memorial Day Ch, Rd 2 U  
 1 c4 Nf6 2 d4 Nc6 3 Nc3 g6 4 Bf4 Bg7 5  
 e3 d6 6 c5 0-0 7 Bb5 Bg4 8 f3 a6 9 Bc6  
 Bc8 10 Bb7 Bb7 11 Nh3 h6 12 g4 Qe8 13  
 g5 hg5 14 Ng5 e5 15 Rg1 e4 16 fe4 d5  
 17 ed5 Rc8 18 d6 Nd5 19 Nd5 Bd5 20 Qg4  
 f5 21 Qh4 Bh6 22 Qh6 Qd7 23 Be5 Qf7 24  
 Qh8 mate 1-0

Erlikhman, Gennady - Pisarsky, Lev [C49]  
 LERA Memorial Day Ch, Rd 2 0935 U  
 1 e4 e5 2 Nf3 Nf6 3 Nc3 Nc6 4 Bb5 Bb4  
 5 d3 d6 6 Bd2 Bd7 7 h3 Qe7 8 a3 Bc5 9  
 Nd5 Nd5 10 ed5 Nd4 11 Bd7 Qd7 12 c3  
 Nf3 13 Qf3 0-0-0 14 Be3 Rhg8 15 d4 ed4  
 16 Bd4 Bd4 17 cd4 Rde8 18 Kd2 Re7 19  
 Rhe1 Rge8 20 Re3 Qa4 21 Rae1 Qd4 22  
 Kc2 Re3 23 Re3 Re3 24 fe3 Qa4 25 Kb1  
 Qd7 26 e4 f6 27 g4 Kd8 28 g5 Qf7 29 h4  
 Ke7 30 Qc3 Kf8 31 gf6 gf6 32 h5 Qh5 33  
 Qc7 Qh2 34 Qd8 Kf7 35 Qd7 Kg6 36 Qe8  
 Kh6 37 Qf8 Kg6 38 Qg8 Kh6 39 Qf8 Kg5  
 40 Qg7 Kf4 41 Qf6 Ke4 42 Qe6 Kd4 43  
 Qf6 Kd5 44 Qf3 Ke5 45 Qe3 Kf6 46 Qd4  
 Qe5 47 Qh4 Qg5 48 Qd4 Qe5 49 Qh4 Kg6  
 50 Qg4 Qg5 51 Qe4 Qf5 52 Qf5 Kf5 53  
 Resigns 0-1

Mutuc, Jonas - Lee, James [C55]  
 LERA Memorial Day Ch, Rd 2 1307 1181 C  
 1 e4 e5 2 Nc3 Nc6 3 Bc4 Nf6 4 Nf3 Ne4  
 5 Qe2 Nc3 6 dc3 f6 7 Be3 Be7 8 Rd1 a6  
 9 Nh4 b5 10 Qh5 g6 11 Ng6 d6 12 Ne5  
 Resigns 1-0

Jackson, Roy - Deb, Akash [D05]  
 LERA Memorial Day Ch, Rd 1 1682 1600 B  
 1 Nf3 Nf6 2 d4 d5 3 e3 e6 4 Bd3 c5 5  
 c3 c4 6 Bc2 Bd6 7 Nbd2 Bd7 8 0-0 0-0 9  
 e4 de4 10 Ne4 Ne4 11 Be4 Bc6 12 Qe2  
 Bd5 13 Bc2 Nd7 14 Bg5 f6 15 Bh4 Qc7 16  
 Bg3 Bg3 17 hg3 b5 18 Rad1 Rfe8 19 Rfe1  
 Rad8 20 Bb1 Qb7 21 Nh4 Nb6 22 f4 Nc8  
 23 Nf3 Nd6 24 Nd2 Qf7 25 Ne4 Nf5 26 g4  
 Nh4 27 g3 f5 28 Ng5 Qb7 29 gh4 h6 30  
 Ne4 fe4 31 Be4 Qf7 32 Rf1 Qc7 33 Rde1  
 Rf8 34 Bd5 ed5 35 Qe6 Kh8 36 Re5 Rd6  
 37 Qe7 Rd7 38 Qf8 Resigns 1-0

[C45]  
 Ribas, Miquel - Shaughnessy, Elizabeth  
 LERA Memorial Day Ch, Rd 2 1616 1557 B  
 1 e4 e5 2 Nf3 Nc6 3 d4 ed4 4 Nd4 Nf6 5  
 Nc6 bc6 6 Bg5 Be7 7 Nc3 d5 8 ed5 cd5 9  
 Bb5 Bd7 10 Bf6 Bf6 11 Qd5 Qe7 12 Kf1  
 Rd8 13 Re1 Resigns 1-0

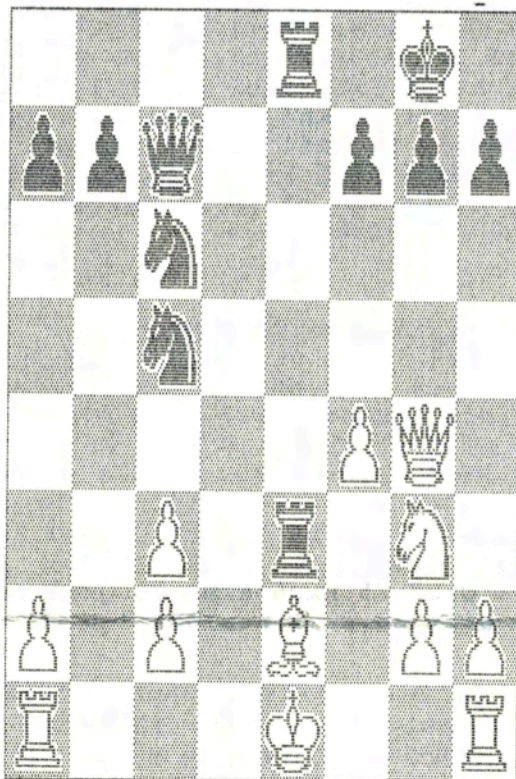
Magaoay, Calixto - Young, Clinton [D45]  
 LERA Memorial Day Ch, Rd 2 1664 1872 A  
 1 d4 Nf6 2 c4 c6 3 Nc3 d5 4 e3 e6 5  
 Nf3 Nbd7 6 Qc2 Be7 7 Bd3 0-0 8 Ng5 h6  
 9 h4 e5 10 cd5 cd5 11 Nd5 Nd5 12 Bh7  
 Kh8 13 Bg8 e4 14 Nf7 Rf7 15 Bf7 N7f6  
 16 Bd2 Nb4 17 Bb4 Bb4 18 Ke2 Bg4 19 f3  
 ef3 20 gf3 Bh5 21 Qb3 Qe7 22 Be6 Re8  
 23 d5 Ne4 24 Rh3 Qc5 25 Qd3 Nd2 26 a3  
 Nf3 27 Rf3 Rf8 28 Raf1 Rf3 29 Rf3 Qf8  
 30 e4 Bd6 31 Kf2 Qe7 32 Rh3 Qf6 33 Ke1  
 Qb2 34 Qd2 Qb1 35 Kf2 Bc5 36 Re3 Qe4  
 37 Qc3 Qf4 38 Kg2 Qe3 39 Qe3 Be3 40 d6  
 Bc5 41 d7 Be7 42 Kg3 g6 43 Kf4 Kg7 44  
 Ke5 Bh4 45 Kd6 Bd8 46 Bd5 b5 47 Kc6  
 Be2 48 Kb7 Kf6 49 Ka7 Ke5 50 Bc6 Kd6  
 51 Kb7 g5 52 a4 ba4 53 Ba4 h5 54 Kc8  
 Ke7 55 Bc6 g4 56 Be4 h4 57 Kb7 Bf3  
 58 Resigns 0-1

Lico, Michael - Ho, Matthew [A29]  
 LERA Memorial Day Ch, Rd 1 1672 1585 B  
 1 c4 d5 2 cd5 Nf6 3 Nc3 Nd5 4 g3 e5 5  
 Bg2 Be6 6 Nf3 Nc6 7 d3 Bc5 8 0-0 0-0 9  
 Bd2 Qd7 10 Ng5 Nc3 11 bc3 Bf5 12 Qb3  
 Bb6 13 Be3 h6 14 Bb6 ab6 15 Ne4 Bh3 16  
 f4 Ra5 17 Bh3 Qh3 18 f5 Qg4 19 Rf2  
 Rfa8 20 Kg2 Ra3 21 Qd5 Rd8 22 Qc4 Ra5  
 23 h3 Qh5 24 g4 Qh4 25 g5 hg5 26 Kh2  
 g4 27 Rg2 Qh3 28 Kg1 Qe3 29 Kh1 Qf4 30  
 Rg4 Qf5 31 Rag1 Qh5 32 Resigns 0-1

Rothbach, Brian - Ben\_Zur, Ron [B50]  
 LERA Memorial Day Ch, Rd 1 1638 1671 B  
 1 e4 c5 2 Nf3 d6 3 d3 e6 4 Be2 Nf6 5  
 0-0 Be7 6 Nc3 Nc6 7 Be3 a6 8 d4 Ng4 9  
 Qd2 Ne3 10 fe3 b5 11 Nd1 Bf6 12 c3 Qc7  
 13 Nf2 e5 14 h3 h5 15 Rac1 Bd7 16 Rfd1  
 Ke7 17 d5 Nd8 18 c4 b4 19 b3 a5 20 Nh2  
 Nb7 21 Ra1 a4 22 g4 Na5 23 ba4 Ba4 24  
 Rdc1 Bd7 25 gh5 Qc8 26 Nhg4 Rh5 27 Nf6  
 Rg5 28 N6g4 Qh8 29 Kh2 g6 30 Rg1 Qh4  
 31 Kg2 f5 32 ef5 gf5 33 Kf1 fg4 34 hg4  
 Rf8 35 Rg2 Rf2 36 Resigns 0-1

Marshall, Martin - Koepcke, Richard [B00]  
 LERA Memorial Day Ch, Rd 1 2025 2312 M  
 1 e4 b6 2 Nc3 e6 3 d3 Bb7 4 f4 f5 5 a3  
 d6 6 Qe2 Qe7 7 Nf3 Nc6 8 Be3 Nf6 9 e5  
 de5 10 fe5 Ng4 11 Bg1 0-0-0 12 h3 Nh6  
 13 0-0-0 g5 14 Be3 f4 15 Bf2 Bg7 16 d4  
 Rhe8 17 Ne4 Nf5 18 c3 h6 19 Qc2 Rg8 20  
 Bb5 Nb8 21 Rhe1 Bh8 22 Nh2 h5 23 Be2  
 Qh7 24 Bf3 Qh6 25 Kb1 Rdf8 26 Qa4 Ne3  
 27 Be3 fe3 28 Qa7 Qh7 29 Re3 g4 30 hg4  
 hg4 31 Ng4 Rg4 32 Bg4 Be4 33 Ka1 Bd5  
 34 c4 Bc4 35 d5 Re8 36 Be6 Re6 37 de6  
 Qc2 38 Rh1 Bg7 39 e7 Bf7 40 Rc3  
 Resigns 1-0

## CONTEST



Which game is this from?

The first person who correctly identifies the game and move number represented by this position wins a free copy of next week's Newsletter. Only one guess and one Newsletter per person.

# 1998 LERA MEMORIAL DAY CLASS CHAMPIONSHIPS

## Prizewinners

Place	Name	Rtng	Pts	\$\$\$
<b>Open Section</b>				
1-3	John Grefe	2503	4.5	333
	Mladen Vucic	2451	4.5	333
	Walter Shipman	2369	4.5	333
<b>Expert Section</b>				
1	James Waide	2044	5	400
2-3	Michael Aigner	2094	4.5	200
	Larry Snyder	2024	4.5	200
<b>A Section</b>				
1-2	Stuart Wittenstein	1941	5	280
	Steven Krasnov	1895	5	280
3	Neil Regan	1989	4.5	140
<b>B Section</b>				
1	Alberto Cisneros	1299	5	300
2-3	Ron Ben-Zur	1791	4.5	150
	Latrael Eagles	1666	4.5	150
<b>C Section</b>				
1	Constancio Cusi, Jr.	1356	5.5	200
2-4	Patrick Nichols	1480	4.5	66
	Shawn Hollins	1343	4.5	66
	Inn Ho Sohn	1268	4.5	66
<b>D/E/F-J/UNR Section</b>				
D	Dave Brown	1374	5	100
E	Marijo Mont-Reynaud	1085	4	100
F	Alexander Tseung	989	4	50
	Andrew Cibrian	877	4	50
UNR	Maximo Fajardo		5.5	100

Here's an approximate list of prizewinners at this weekend's LERA tournament. We don't have an official list of prizes paid, but we do have the official final standings and know that LERA paid the announced prizes despite drawing only 139 of the 160 players on which the prizes were based. (The 333 and 66 may have been 334 and 67—we don't know—but we can't complain if they weren't, because Jim Hurt was very generous in paying the announced prizes despite the low turnout.)

In addition to the place prizes shown, \$25 brilliancy prizes went to Romulo Fuentes, Michael Aigner, Steven Krasnov, Matthew Ho, Carl Odegaard, and Orin Harris. As always, brilliancy prizes were selected by Richard Shorman; as usual, we have published them for you.

Also as usual at LERA, final-day games were ineligible for brilliancy prizes. We have selected a final-round, low-section game for inclusion in addition to the games provided by Mr. Shorman.

We would also like to take this opportunity to point out that this week's LERA results thematically support our reiterated assertion that you should "always" play up.

One of the wimp-out reasons that people give for *not* playing up is that they want a chance to win money. Aside from the fact that there's always some sandbagger there to take the prize away from you anyway, we now know that playing up does not preclude one from winning money. Alberto Cisneros played up *two sections* and took *first place* in the B section; Constancio Cusi, Jr., played up and took first in the C section; Inn Ho Sohn played up and tied for second in the C section.

And now for that promised last-round game:

**Han Zhang—Mari jo Mont-Reynaud**, Philidor's D 1.e4 e5 2.Nf3 d6 3.d4 Nd7 4.Nc3 g6 5.Bd3 Bg7 6.Be3 Ngf6 7.OO OO 8.Re1 c5 9.dxe5 dxe5 10.Bg5 Qc7 11.Qd2 Ng4 12.h3 f6 13.Bh4 Nh6 14.Nd5 Qd6 15.Rad1 g5 16.Bg3 Nb6 17.Nxb6 Qxb6 18.Bc4+ Kc8 19.c3 g4 20.hxg4 Bxg4 21.Rb1 Bxf3 22.gxf3 Rad8 23.Qe3 Nf7 24.Bxf7 Rxf7 25.f4 Bh6 26.Qf3 exf4 27.Bxf4 Rg7+ 28.Kh1 Rg6 29.Bxh6 Rxh6+ 30.Kg1 Qb5! 31.Re2 Qxe2 (wish I could do that) 32.Qxe2 Rg8+ 33.Qg4 Rxc4+ 34.Kf1 Rh1+ 35.resigns

Sorry for the typo  
in the name.  
Nice game.

**B.1 Tom Stevens-Wade Regensberg, BSG** 1.d4 Nf6 2.Nc3 d5 3.e4 dxe4 4.Nge2 Bg4 5.h3 Bxe2 6.Qxe2 c6 7.Bg5 Nbd7 8.OOO Qa5 9.Bd2 e6 10.Kb1 Be7 11.Nxe4 Qb6 12.c3 a5 13.f4 OO 14.Ng5 a4 15.Nxe6 Ba3 16.Bc1 fxe6 17.Qxe6+ Kh8 18.Ka1 Rfe8 19.Qf5 Bf8 20.g4 g6 21.Qc2 Bg7 22.h4 Nxg4 23.h5 gxh5 24.Rh5 Ndf6 25.Rh3 Re7 26.Bd3 h6 27.Rg1 Rae8 28.Bg6 Re1 29.Rgg3 R8e7 30.Rh4 R7e2 31.Qb1 Ne3 32.Bd3 a3 33.Bxe2 axb2+ 34.Qxb2 Rxc1 35.Qxc1 Ned5 36.f5 Qc7 37.Rg6 Ng8 38.Rhg4 h5 1-0

**B.2 Steven Gaffagan-Andy Lee, Wing G** 1.e4 e6 2.Nf3 d5 3.e5 c5 4.b4 cxb4 5.a3 d4 6.Bb2 Nc6 7.Bc4 Nh6 8.OO Be7 9.axb4 Bxb4 10.c3 Bc5 11.cxd4 Nxd4 12.Nc3 OO 13.Ne4 Nxf3+ 14.Qxf3 Bd4 15.Bc3 Nf5 16.Rfd1 Bd7 17.Rab1 Bc6 18.Qf4 Rc8 19.Bd3 Ba4 20.Nf6+ gxf6 21.Qg4+ Kh8 22.Bxf5 exf5 23.Qxd4 0-1

**B.3 Pam Ruggiero-Norm Friedman, Alapin V** 1.e4 c5 2.c3 e6 3.d4 d5 4.exd5 exd5 5.Bb5+ Nc6 6.Qe2+ Be6 7.Nf3 a6 8.Bxc6+ bxc6 9.OO h6 10.Ne5 Qc8 11.Re1 Ra7 12.Nd2 Nf6 13.dxc5 Bxc5 14.Nb3 Bb6 15.Be3 Bxe3 16.Qxe3 Rc7 17.Nc5 OO 18.Qd4 Nd7 19.Nxe6 fxe6 20.Ng6 Re8 21.Re3 c5 22.Qh4 Nf6 23.Rae1 Ne4 24.f3 Ng5 25.Qa4 Kh7 26.Nf4 Rb7 27.h4 Nf7 28.Qc2+ Kg8 29.Rxe6 Rxe6 30.Rxe6 Qb8 31.Nd3 c4 32.Nb4 d4 33.Qe4 Nd6 34.Qxd4 resigns

**B.4 Richard Newey-M.K. Saca, 2ND** 1.e4 e5 2.Nf3 Nc6 3.Bc4 Nf6 4.Ng5 d5 5.exd5 Na5 6.Bb5+ Bd7 7.Qe2 Bxb5 8.Qxb5+ c6 9.dxc6 Nxc6 10.Qxb7 Ne7 11.Qb3 Ned5 12.Nc3 Rb8 13.Qa4+ Nd7 14.Nxd5 Qxg5 15.OO Bd6 16.d4 Qg6 17.dxe5 Bxe5 18.f4 Qe6 19.c4 Bd4+ 20.Be3 Bxe3+ 21.Nxe3 Qxe3+ 22.Kh1 Rxb2 23.Rfe1 Re2 24.Rxe2 Qxe2 25.Qxa7 Qe7 26.Qa8+ Nb8 27.Qxb8+ Qd8 28.Re1+ Kd7 29.Rd1+ Ke7 30.Qe5+ resigns

**B.5 David Goldfarb-Andrew Handler, A. Dragon** 1.e4 c5 2.Nf3 Nc6 3.d4 cxd4 4.Nxd4 g6 5.Nc3 Bg7 6.Be3 Nf6 7.Be2 OO 8.OO d5 9.exd5 Nxd5 10.Nxd5 Qxd5 11.Bf3 Qa5 12.Nxc6 bxc6 13.c3 Rd8 14.Qc2 Bf5 15.Be4 Bxe4 16.Qxe4 Qc7 17.Rad1 e6 18.Bg5 Rd7 19.Qa4 h6 20.Bf4 Qb7 21.Rxd7 Qxd7 22.Rd1 Qb7 23.b3 g5 24.Be3 Bxc3 25.h4 Qb5 26.Qg4 Qf5 27.Qxf5 exf5 28.hxg5 hxg5 29.Bxg5 Re8 30.Be3 Be5 31.Bxa7 Re7 32.Bc5 Re6 33.Kf1 Rh6 34.Rd8+ Kg7 & resigns

**B.6 Juan Herrera-Dwight Kearney, Sämisch V** 1.d4 Nf6 2.c4 e6 3.Nc3 Bb4 4.a3 Be7 5.e4 d6 6.Bd3 e5 7.Nge2 exd4 8.Nxd4 c5 9.Nf5 Bxf5 10.exf5 Nc6 11.OO OO 12.f4 Qd7 13.g4 Nd4 14.g5 Ne8 15.Nd5 Bd8 16.f6 g6 17.Ne3 h5 18.f5 Bxf6 19.gxf6 Nxf6 20.Nc2 Ng4 21.Nxd4 cxd4 22.Be4 d5 23.Qxd4 Qd6 24.Bf4 Qf6

25.Qxf6 Nxf6 26.Bxd5 Nxd5 27.cxd5 Rfe8 28.fxg6 fxg6 29.Rae1 Red8 30.d6 Rd7 31.Re7 resigns

**B.7 Santiago Lozano-Mark Kastor, Franco-ID** 1.d4 e6 2.f4 d5 3.Nf3 c5 4.e3 c4 5.Be2 Nf6 6.c3 Be7 7.OO Nc6 8.Nbd2 OO 9.Ne5 Qc7 10.Qc2 Re8 11.Rf3 Bf8 12.Rg3 g6 13.Ndf3 Ne4 14.Rh3 f6 15.Ng4 Ne7 16.Nd2 Bg7 17.Nxe4 dxe4 18.Qa4 Bd7 19.Qxc4 Qxc4 20.Bxc4 b5 21.Bb3 Rac8 22.Bd2 Nd5 23.Nf2 f5 24.g4 Bc6 25.Kh1 Rc7 26.Bxd5 Bxd5 27.a3 Bb3 28.Rg1 Bf8 29.Rhg3 Ra8 30.h4 Be7 31.g5 a5 32.Rh3 Bf8 33.h5 Rg7 34.hxg6 Rxg6 35.Kg2 Ra7 36.Kf1 Rgg7 37.Nh1 Kf7 38.Ng3 Ke7 39.Nh5 Kd8 40.Nxg7 Rxg7 41.Kf2 Ra7 42.Rgh1 b4 43.Rxh7 Rxh7 44.Rxh7 bxa3 45.bxa3 Bxa3 46.g6 Ke8 47.Ra7 a4 48.g7 e5 49.Rxa4 Be7 50.Ra8+ Bd8 51.fxe5 Bd5 52.c4 Bxc4 53.Ba5 Kf7 54.Rxd8 Kxg7 55.d5 Kf7 56.Bb4 Bb5 57.Rf8+ Kg6 58.e6 Bc4 59.e7 resigns

**B.8 Kurt Jacobs-Brendan MacIntyre, English O** 1.c4 e6 2.Nc3 d5 3.e3 c5 4.cxd5 exd5 5.Qa4+ Bd7 6.Bb5 Nf6 7.Nf3 Bd6 8.OO OO 9.Ng5 h6 10.Nf3 Nc6 11.d4 a6 12.Be2 Nxd4 13.Qd1 Nxe2+ 14.Nxe2 Bc6 15.b3 Qc7 16.Bb2 Ng4 17.Ng3 Bxg3 18.fxg3 Nxe3 19.Qd3 Nxf1 20.Rxf1 d4 21.Nh4 Bb5 22.Qf3 Bxf1 23.Kxf1 Qc6 24.Qg4 Qe6 25.Nf5 Qf6 26.Kg1 Rfe8 27.h3 Re5 28.Nxd4 Qg5 29.Qxg5 Rxg5 30.Nf3 Rxg3 31.Be5 Rg6 32.Kf2 Re8 33.g4 Rge6 34.Bc3 Re2+ 35.Kg3 Rxa2 36.Be5 Ra3 37.Kf4 Rxb3 38.Nd2 Rb4+ 39.Kf5 g6+ 40.Kf6 Re6#

**B.9 Uwe Jacobs-Henry Mar, Alapin V** 1.e4 c5 2.c3 Nc6 3.Nf3 d6 4.d4 cxd4 5.cxd4 Nf6 6.Nc3 a6 7.Be2 e6 8.OO Be7 9.Bf4 OO 10.a3 d5 11.exd5 exd5 12.Qc2 Be6 13.Rfd1 Rc8 14.Qd3 b5 15.Ne5 Na5 16.Qg3 Re8 17.h4 Nc4 18.Rab1 Nd6 19.Bd3 Nf5 20.Bxf5 Bxf5 21.Rbc1 Nh5 22.Qf3 Nxf4 23.Qxf4 Be6 24.g3 f6 25.Ng4 Bd6 26.Qf3 Qd7 27.Ne3 Bf8 28.Ncxd5 Rxc1 29.Rxc1 Rc8 30.Rxc8 Qxc8 31.Nf5 Bxf5 32.Ne3 Bd7 33.d5 Qc1+ 34.Kg2 Qxb2 35.Nf5 Qe5 36.g4 g6 37.Ne3 Bd6 38.Kf1 Qa1+ 39.Kg2 Bxa3 40.d6 Qe5 40.Nd5 Kg7 41.Nd5 Kg7 42.Nb6 Qxd6 43.Nxd7 Qxd7 44.Qxa3 Qxg4+ 45.Kf1 Qd1+ 46.Kg2 Qd5+ 47.Kg1 Qe6 48.Kh2 Kf7 49.Qd3 b4 50.h5 b3 51.h6 Qe5+ 52.Kg2 b2 53.Qd7+ Qe7 54.Qd5+ Kf8 55.Qa8+ Qe8 56.Qb7 Qb5 57.Qg7+ Ke8 58.Qxf6 Qd5+ 59.Kg3 b=Q 60.Qh8+ Ke7 61.Qg7+ Qf7 62.Qe5+ Qe6 63.Qg7+ Kd6 64.Qd4+ Kc6 65.Qc3+ Kb5 66.Qc7 resigns

**B.10 Maynard Needham-Richard Veres, Winawer V** 1.e4 e6 2.d4 d5 3.Nc3 Bb4 3½.e5 c5 4.a3 Bxc3+ 5.bxc3 Qc7 6.Nf3 Ne7 7.Bd3 Nc6 8.OO Qa5 9.Bd2 c4 10.Be2 Qa4 11.Re1 OO 12.g3 Bd7 13.h4 f6 14.exf6 Rxf6 15.Bg5 Rf7 16.h5 h6 17.Bd2 Raf8 18.Nh2 e5 19.dxe5 Nxe5 20.f4 N5c6 21.Bg4 Nf5 22.Rab1 Nxg3



23.Bxd7 Rxd7 24.Qg4 Nf5 25.Nf3 Qxa3 26.Rb5  
a6 27.Rbb1 Rdf7 28.Re6 Qc5 29.Kh2 Re7  
30.Rxe7 Qxe7 31.Re1 Qf6 32.Rb1 Rf7 33.Re1  
Re7 34.Rg1 Re2+ 35.Kh3 b5 36.Ne5 Rxd2  
37.Nxc6 Rxc2 38.Ne5 Rxc3+ 39.Kh2 Rc2+  
40.Kh3 Rc3+ 41.Kh2 Qh4+ 42.Qxh4 Nxh4  
43.Ra1 Nf3+ 44.Nxf3 Rxf3 45.Rxa6 Rxf4  
46.Rb6 Rh4+ 47.Kg3 Rxh5 48.Rxb5 Rg5+  
49.Kh2 d4 50.Rb4 Rc5 51.Kg3 c3 52.resigns

**B.11 Kayven Riese-Victor Manning**, Marshall  
G/TP Declined 1.e4 d5 2.exd5 c6 3.c4 cxd5  
4.d4 Nf6 5.Nc3 e6 6.Nf3 Bb4 7.cxd5 exd5  
8.Bb5+ Bd7 9.Qe2+ Ne4 10.OO Bxc3 11.Bxd7+  
Nxd7 12.bxc3 OO 13.Qd3 Rc8 14.Bb2 g5  
15.Rac1 g4 16.Nd2 Nxd2 17.Qxd2 f5 18.Rfe1 f4  
19.Qe2 Rc6 20.c4 f3 21.Qd3 Qh4 22.cxd5 Rh6  
23.h3 fxc2 24.Qg3 Qxg3 25.fxc3 gxh3 26.Kh2  
Nf6 27.Re6 Ng4+ 28.Kg1 Rxe6 29.dxe6 Rf2  
30.Rc8+ Kg7 31.Rc7+ Kg6 32.resigns

**B.12 Shawn Hollins-Wilmot McCutchen**,  
Anglo-ID 1.c4 Nf6 2.Nf3 d6 3.g3 Nc6 4.Bg2 g6  
5.Nc3 Bg7 6.d3 OO 7.Bd2 a6 8.Qc1 e6 9.Bh6  
Rb8 10.h3 Bd7 11.Qd2 Qe7 12.Rb1 d5 13.cxd5  
exd5 14.Bxg7 Kxg7 15.OO h5 16.e4 dxe4  
17.dxe4 Rad8 18.Qf4 Be6 19.Rbd1 Nb4  
20.Rxd8 Rxd8 21.e5 Nd5 22.Nxd5 Bxd5 23.Rd1  
Bxf3 24.Qf6+ Qxf6 25.exf6+ Kxf6 26.Rxd8  
Bxg2 27.Kxg2 Nxa3 28.Rd7 c5 29.Rxb7 Nb4  
30.Rc7 Nd3 31.b3 Ke6 32.Rc6+ Kd5 33.Rxa6  
c4 34.bxc4+ Kxc4 35.Rf6 resigns

**B.12½ Kris MacLennan-Kofi Tatum** (these  
colors played are opposite those assigned),  
London S 1.d4 Nf6 2.Nf3 g6 3.Bf5 Bg7 4.Nbd2  
c5 5.c3 cxd4 6.cxd4 d5 7.e3 OO 7½.Bd3 Nc6  
8.Qb3 Re8 9.Bb5 Bd7 10.Bxc6 Bxc6 11.Rc1  
Ne4 12.Nxe4 dxe4 13.Ne5 Bd5 14.Qa4 f6  
15.Nc4 a6 16.Qb4 b5 17.Nd2 e5 18.dxe5 fxe5  
19.Bg3 Bf8 20.Qc3 Rc8 21.Qxc8 Qxc8 22.Rxc8  
Rxc8 23.OO Rc2 24.Nb1 Bc4 25.Re1 Bb4  
26.Rd1 Be2 27.Rd8+ Kf7 28.f3 exf3 29.gxf3  
Bxf3 30.Bxe5 Rg2+ 31.Kf1 Rc2 32.a3 Bc5  
33.Rc8 Bg4 34.Rc7+ Ke6 35.Bd4 Bh3+ 36.Kg1  
Rg2+ 37.Kh1 Bd6 38.Rxh7 Rxh2+ 39.Kg1  
Rg2+ 40.Kh1 Rg3 41.Nd2 Bg2+ 42.Kg1 Kf5  
43.Kf2 Bd5 44.e4+ Bxe4 45.Rf7+ Ke6 46.Nxe4  
Rd3 47.Rf6+ resigns. So much for the two  
bishops.

**B.13 Bret Rohmer-Jonah Bilovsky**, Ryder G  
1.d4 Nf6 2.Nc3 d5 3.e4 dxe4 4.f3 exf3 5.Qxf3  
e6 6.Bb5+ c6 7.Bd3 Nbd7 8.Nge2 c5 9.Bf4  
cxd4 10.Nb5 Nd5 11.OO N7f6 12.Qg3 Bd7  
13.Bd6 Qb6 14.Bxf8 Kxf8 15.Qd6+ Qxd6  
16.Nxd6 b6 17.Nxd4 Ke7 18.Ne4 Rc8 19.Nxf6  
Nxf6 20.Rae1 g6 21.Rf2 Nd5 22.Ref1 f5  
23.Re1 Rhe8 24.Rfe2 Kf6 25.Nf3 Nb4 26.Ne5  
Rc7 27.Nxd7+ Rxd7 28.Bb5 Rde7 29.Bxe8  
Rxe8 30.a3 Nc6 31.Rd1 Re7 32.Kf2 e5  
33.Re6+ Re6 34.Rxe6+ Kxe6 35.c3 e4 36.Ke3  
Ke5 37.g3 g5 38.Kf2 Na5 39.Ke2 f4 40.gxf4  
gxf4 41.Rf1 f3+ 42.Kf2 Kf4 43.Re1 Nc4  
44.Rd1 e3+ 45.resigns

**B.14 Elizabeth Cornell-David Steel**, Franco-ID  
1.d4 e6 2.c3 f5 3.Bf4 Nf6 4.Nd2 Be7 5.h3 OO  
6.Ngf3 b6 7.Nc4 Bb7 8.Qd3 Ba6 9.g4 d5 10.b3  
dxc4 11.bxc4 Bb7 12.g5 Nh5 13.Be5 Nd7  
14.Bf6 gxf6 15.gxf6 Bxf6 16.Rg1+ Kh8 17.Bg2  
Rg8 18.d5 Nf4 19.Qe3 Nxc2+ 20.Rxg2 Rxg2  
21.dxe6 Bxf3 22.Qxf3 Rg1+ 23.Kd2 Ne5+  
24.Ke3 Nxc4+ 25.Kf4 Qd6+ 26.Kxf5 Qe5#

**B.15 Randy Sepe-Ricky Grijalva**, Anglo-Dutch  
D 1.c4 f5 2.d4 g6 3.Nf3 Bg7 4.Nc3 Nf6 5.Bg5  
OO 6.Bxf6 Bxf6 7.e4 fxe4 8.Nxe4 Bg7 9.Qb3  
e6 10.Bd3 Nc6 11.d5 Nd4 12.Nxd4 Bxd4  
13.OO b6 14.Rad1 Bb7 15.Bb1 e5 16.d6 c5  
17.Qg3 Rf4 18.Ng5 Qf6 19.Rd2 h5 20.Nh3 Rg4  
21.Rd3 Rxg3 22.Rxg3 Kg7 23.Rxg6+ Qxg6  
24.Bxg6 Kxg6 25.Kh1 Rg8 26.b3 Kf5 27.f3 e4  
28.fxe4+ Kxe4 29.Nf4 Be3 30.Nd5 Bxd5  
31.cxd5 Rg5 32.Rf7 Rxd5 33.Re7+ Kf5 34.g3  
Rxd6 35.Rxe3 Rd1+ 36.Kg2 Rd2+ 37.Kh3 d5  
38.a4 d4 39.Re7 Rb2 40.Kh4 Rxh2#

**B.16 Jacques Calma-Jeff Henderson**, Max  
Lange A/TP 1.e4 e5 2.Nf3 Nc6 3.Bc4 Bc5  
4.OO Nf6 5.d4 exd4 6.e5 Ng5 7.Bxf7+ Kxf7  
8.Ng5+ Ke8 9.Qxg4 d6 10.Qf4 Rf8 11.Qg3 Bf5  
12.exd6 Bxd6 13.Re1+ Kd7 14.Qb3 Qf6 15.Nf3  
Rae8 16.Bd2 Be4 17.Bg5 Qg6 18.Nbd2 Bxf3  
19.Nxf3 Rxf3 20.Qxf3 Rxe1+ 21.Rxe1 Qxg5  
22.Qh3+ Kd8 23.Qxh7 Ne5 24.Qh8+ Kd7  
25.Qh3+ Qg4 26.Qxg4+ Nxc4 27.g3 Ne5  
28.Kg2 Nc6 29.h5 Nb4 30.Re2 Nxa2 31.Kf3  
Kc6 32.Kg4 Kc5 33.Kf5 Kd5 34.Kg6 c5  
35.Kxg7 c4 36.f4 d3 37.cxd3 cxd3 38.Rd2 Ke4  
39.h5 Ke3 40.Rh2 Kf3 41.Rd2 Nb4 42.f5 Ke3  
43.Rd1 Bxg3 44.f6 Nd5 45.f7 Bd6 46.f=Q (h6)  
Bxf8+ 47.Kxf8 Nf6 48.h6 Nh7 49.Kg7 resigns

**B.17 Andrew Thomas-J.D. McLean**, French  
D/TP Steinitz V 1.d4 Nf6 2.Nc3 e6 3.e4 d5 4.e5  
Ne4 5.Nxe4 dxe4 6.f3 Nc6 7.c3 Be7 8.fxe4  
Nxe5 9.dxe4 Qxd1+ 10.Kxd1 OO 11.Kc2 Bd7  
12.Be3 Rfd8 13.Rd1 b6 14.Nf3 a5 15.Bd3 a4  
16.a3 h6 17.Rd2 Bc6 18.Nd4 Bb7 19.Nb5 c5  
20.Rf1 Rf8 21.Nd6 Bc6 22.Bc4 Ra5 23.Nxf7  
Rxf7 24.Bxe6 Bxe4+ 25.Kc1 Bg6 26.Rdf2  
resigns

**B.18 Frank Calma-John Circo**, KNO 1.e4 e5  
2.Nf3 Qf6 3.Bc4 Bc5 4.OO d6 5.h3 Qg6 6.d3  
Bxh3 7.Ng5 Kf8 8.Nxh3 h6 9.Qe2 Nc6 10.c3  
Ne7 11.Be3 Rb8 12.Bxc5 dxc5 13.f3 b5 14.Bb3  
Qd6 15.Nf2 b4 16.Rd1 a5 17.Ng4 f5 18.Ne3 f4  
19.Nd5 h5 20.Nd2 Rb7 21.Nc4 Qg6 22.Nxe7  
Kxe7 23.Kf2 Qg3+ 24.Kf1 h4 25.Qf2 h3  
26.Qxg3 fxc3 27.gxh2 Rxh2 28.Kg2 Rh2+  
29.Kxg3 Re2 30.Re1 Rxe1 31.Rxe1 Kf6 32.Rf1  
a4 33.Bxa4 Ne7 & B is fully developed 34.f4  
exf4 35.Rxf4+ Kg5 36.Rf7 Ng6 37.Rxg7 bxc3  
38.bxc3 Kh6 39.Rf7 Kh5 40.e5 Kg5 41.Bd7  
Nh4 42.e6 Rb1 43.e7 Rb2 44.Nxb2 resigns

The Northern California Chess Newsletter is  
©1998 by Kurt Jacobs. All Rights Reserved.  
This week's special-sized edition is dedicated  
to Mark Brown. Get a bigger binder.