

OPEN FILE

PUBLISHED BY THE REDWOOD EMPIRE CHESS ASSOCIATION
200 AVRAM AVENUE ■ ROHNERT PARK, CALIFORNIA 94928

RECA OPEN FILE

VOLUME III NUMBER 1

JULY 1987

Will Rodgers, Vice President of the Rohnert Park Chess Club, has become increasingly involved in educational aspects of youth chess. Will recently became Director of Education for the Redwood Empire Chess Association. He wrote to George Koltanowski and received an invitation to discuss his plans with the Dean of American Chess on June 11 in person. OPEN FILE Editor, Keith Halonen, also on business in San Francisco, accompanied Will for a...



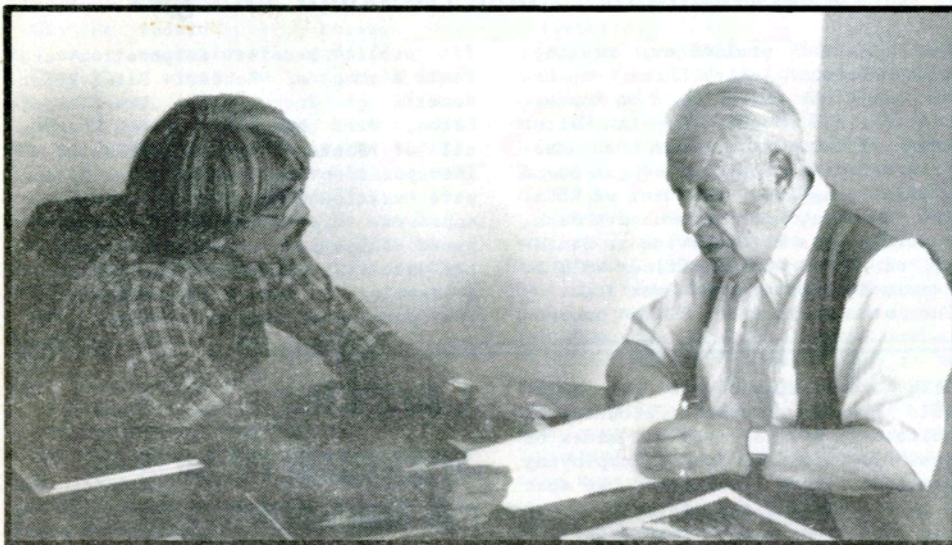
In The Dark

An updated and expanded edition of "Adventures of a Chessmaster"

Containing over 100 annotated blindfold games by

World Blindfold Champion
George Koltanowski
International Master

Thursday in the City with George



WILL RODGERS INTERVIEWS GEORGE KOLTANOWSKI

The Dean of American Chess shares his acumen on the subject of Youth Chess. Kolty, as he is affectionately known by his admirers, is an International Treasure in a very real sense. Instrumental in the formation of the Official Rules of Chess, he is also an International arbiter for the World Chess Federation, in which the U.S. Chess Federation is one of about 130 member nations.

Fortunately, we had a calm moment before visiting George Koltanowski, or the anticipation would have been most unbearable. At 1:30 we were received by our gracious host at the door of his apartment and ushered to a den area off a living room with a splendid view northwest from Cathedral Hill. His chess table is positioned before the picture windows for the indirect daylight. There were no pieces in evidence, and the board was not positioned for playing, but for study. In order to sit in relation to the board one faces the window. Kolty must study more than he plays. We la-

ter learned he is producing tapes on disproving the Max Lange.

As we sat to talk, he created an impression of vitality impossible to convey in photographs. George Koltanowski maintains a pristine sharpness honed early on in his life. He spoke to us with enthusiastic concern for our goals. He is founder of Chess for Youth, the program which began over 25 years ago in Milwaukee, Wisconsin. (KH: Did you live there? GK: Oh yes. I also lived in Yankton, South Dakota. That's even worse!)

Our discussions focused on introducing chess into school systems.

SETTING UP A TEACHING PROGRAM

WR: What I wanted to talk to you about is that I'm very interested in teaching chess.

GK: Teaching chess is not that difficult; now, the way to do it, is to go to the Rohnert Park School Board and get them to endorse chess in the schools. Once you get the endorsement of Rohnert Park, you go to the Santa Rosa School Board and show them that this is possible. And what you intend to do is get someone to teach, come in once a week or twice, say, start with once each week. You don't have to run until you can walk. One hour after school or whatever is best, depending on the age of your youngsters. You supply the boards and the men, playing pieces and so forth...

And they don't need any money, because there are plenty of retired chess players, elderly people, who'd be happy to go to schools under your supervision... This program should be offered to all the schools... It's not like in Russia... where they have a Minister of Education, and what he decides everybody else has to do.

A BEGINNER'S CHESS FESTIVAL

GK: You want to know how to teach but I am trying to tell you how to make it global so you can teach. The way you approach it is to... have a chess festival. Redwood Empire chess festival for youngsters only. You arrange it maybe, in your particular case, each year in a different city. In other words, one year in Rohnert Park, the next time in Santa Rosa.

KH: Maybe on Founder's Day in each of those cities.

GK: ...And have people of that city giving exhibitions. Not chess players, not you or you. We don't need good players for that. We need local people, the mayor of the city, to "throw the first ball."

KH: Push the first pawn.

GK: Make the first pawn move, if he does not play chess. If he does play chess, he can have one kid of 7 or 8 playing against him.

KH: Preferably a strong kid.

GK: You can also then get a couple chess players who will play ten kids, simul, if you don't have enough. If you can't get firemen, police, a poet, whoever it is, a banker, anybody. Those are the people who are going to support you...

The point is, you are building up not only chess in schools, but you're building up financial support for the Redwood Empire Chess Association. Who then, in turn, supports this program by giving chess sets and chess boards to the children, and eventually pays the coordinator for this program.

REGARDING FEES FOR LESSONS

GK: I have a coordinator in every city in the United States now. The difference is that we don't charge the children anything.

KH: That's the Chess for Youth Program? This is what we want to do eventually with RECA.

CONTINUED ON PAGE 3

EDITORIAL COMMENT

RECA

This issue, OPEN FILE hails some operational changes and introduces new features which provide Redwood Empire chess players with a forum for communication to chess organizers and officials. This edition appears under the auspice of the REDWOOD EMPIRE CHESS ASSOCIATION, now completing the final steps in obtaining 501(c)(3) non-profit corporation tax status. OPEN FILE enjoys editorial latitude commensurate with RECA's stated purpose.

ADVERTISEMENTS

Please notice the addition of ADVERTISEMENTS. These ads are fully deductible self-promotional investments to potential supporters who may wish to purchase space. I am now soliciting OPEN FILE ad sales to subsidize publication of future volumes and much needed improvements in image.

CODE OF ETHICS

It is a fact that clubs and organizations often establish standing regulations, for absence of rules somehow suggests the idea that members exist in a "social vacuum" where normal restraint is suspended. When people do not know what is expected of them, they also do not know what to expect. With publication of USCF's Code of Ethics in their latest Official Rules of Chess, effective May 1, 1987, we have a model for the creation and implementation of behavioral rules for conduct on USCF Affiliate premises, and during over-the-board play. This is a blessing to RECA, as it obviates the need to research our own policy. Copies are available free of charge from RECA or my office.

CHESS SURVEY

At the risk of sounding like a Madison Avenue Maven, I seek to "place my finger on the pulse" of the local Redwood Empire chess scene by means of surveys on issues of specific significance to players. Surveys will be taken as the need becomes evident. My hope and expectation is that information culled from these surveys will be instrumental in establishing goals and shaping club policy at RPCC, as well as other clubs. We have an opportunity to demonstrate our sensitivity to the wishes and the needs of chess players who are concerned about American chess education, our clubs, tournaments, and the royal game itself.

Chess equipment, gift certificates, and books will be incentives offered in a drawing to respondents completing surveys in a timely manner. Details on incentives will accompany each survey. My mailing list comprises the RPCC Master Roster, Guest Book and tournament registrants list, including amateurs, and local USCF Affiliate clubs in the Redwood Empire.



REDWOOD EMPIRE CHESS ASSOCIATION BOARD OF DIRECTORS

RECA's Board of Directors. From left, Paul Bishop, Clem Falbo, Keith Halonen, Peter Manetti, Walt Randle, Will Rodgers, and Don Steers. RECA will promote chess to the general public and in Redwood Empire school systems. Many recent scientific studies corroborate the long held suspicion that learning the deeper aspects of the game of chess has a positive influence on the ability to make correct analytical decisions in political and economic situations.

RECA Board Members Selected Incorporators Determine Positional Strategies

Two informal preliminary meetings of the Redwood Empire Chess Association Directors were held on Monday, April 27 and Monday, May 11. Walter Randle of Rohnert Park was unanimously instated as Chairman of the Board of Directors and President of RECA. Keith Halonen, also of Rohnert Park, duplicates his RPCC service as Secretary of RECA. Other offices will be determined at future RECA meetings.

The other Directors of the nonpro-

fit public benefit corporation are Paul Bishop of Rohnert Park, Peter Manetti of Guerneville, Dr. Clement Falbo, Will Rodgers, and Don Steers, all of Santa Rosa. RECA Articles of Incorporation and Corporation Bylaws were critiqued by the incorporators, approved, and submitted to an experienced corporate attorney. Signing of the Articles and Bylaws will occur at a meeting to be held expressly for that purpose in the near future.

This broad demographic data base should provide increased accuracy in results. I will address all sides of issues in unbiased format, employing bipartisan query techniques. We must be more selfcritical to fulfill our goals in true egalitarian spirit. I recommend survey results be compared to conditions in each local club, and in matters of import specific to club members, greater weight must be accorded their opinion. On issues specific to tournament players, their opinions must be given more consideration. In a matter concerning all players total survey results carry significance.

Watch for RECA SURVEY #1 with your next issue of OPEN FILE. It will address many issues brought to my attention during the last two years.

OPEN FILE seeks your opinions and recommendations on subjects our surveys should address and the construction of our questions.

Keith Halonen
Editor

Checkles

SWINDLED HUMOR



Thursday in the City with George

CONTINUED FROM PAGE 1

GK: We take care of everything. I understand that you need money, but if you get it, you must have some reason for the money. The kids are going to save you, and you can spend money on them without any problem...

NEED FOR ACTIVE PROMOTERS

KH: We have a tournament manager who is a go-getter when it comes to soliciting funds from local businesses to underwrite local tournaments. We're now interested in creating new chess players, and in funding a headquarters of sorts.

GK: You need a Koltanowski, not me but somebody who talks and entertains and at the same time sells. This is what I've been doing for the Federation for years. I'm going to be the tournament director for the (U.S. Senior Open in San Diego)

WR: We have a friend that's going to be there, Clem Falbo.

KH: Dr. Clem Falbo, from Sonoma State.

GK: He's going to be there?

KH: He'll be there.

GK: He's going to play?

KH: He's going to play. This is his first Senior Open.

GK: He should play, because the prizes are exceptionally good.

KH: That might be why he's down there! (laughter)

GK: I think that you have a good man in Falbo, having him in the (Association). By the way, we started one years ago, in case you don't know it. You're not the first one. We had Vallejo, San Rafael, Novato, Petaluma, Santa Rosa, there might have been a sixth one.

KH: Did you preside over the Santa Rosa club yourself for a while?

GK: I was living in Santa Rosa. Agh, but now your bringing up...

WR: Wasn't it about forty years ago or something like that?

GK: No. It's beginning to count, but... (laughs) Here are some pictures of Santa Rosa people. This was the Santa Rosa club.

KH: Ah. Now, where is this club located? (referring to photo)

GK: They played at the College.

KH: The Junior College?

GK: Yes. It was the chess club.

WR: It is still there.

GK: Well, these people I doubt it. Maybe I am one of the lucky ones, or one of the bad ones. I don't know, I am still alive and kicking.

That's the trouble with chess. You go to a chess club, except the Rohnert Park Chess Club! (laughter) Everything is fine, and then the secretary leaves for whatever reason and the club falls apart. The two strongest players have a fight for some reason or another, two new clubs.

KH: (incredulous) You mean, chess players fight?

GK: Yeah. And then you'll have two new clubs. And that's nothing new. So therefore you can't rely on any chess



GEORGE KOLTANOWSKI

players unless they are really involved personally.

KH: The problem with promotion is that unless you are interested in it, chess is not a terribly captivating spectator sport. The things you do make it exciting to people. They get stimulated.

GK: I know that by putting off the knight tour till the bitter end, that they'll all sit there till I tell it, and (laughter) they won't leave till I do. If you're interested in teaching, in getting the children to play, then you should play the chief role.

Somebody has to be the leader. Talent is one thing. But the effort is important and it's hard labor. Chess is only beginning to pay off now. It didn't pay off 30 or 40 years ago. We can make it a spectator sport and put real sense into it which they're now trying to do with this rapid transit championship. But let's go back, what I'm suggesting now is this. You want to start with a bang, and you want to make money.

A PROMOTER'S FESTIVAL

KH: And get a headline at the same time.

GK: Right. You have a chess festival, a banquet, a dinner, or a lunch. You arrange it when it's most entertaining to the members. If you do it as a luncheon or dinner, you have a couple speakers to entertain with the idea of raising money, and you'll be surprised. Then, you must have a kit ready, where it says they can give money with the tax deduction...

WR: I'm so new to this I don't even think about practical aspects. But that's why we came to see you.

GK: I think what you should be is the main coordinator. Then you can appoint a subordinate in every city who tries to get a few of his cronies to go and teach, retired people, an hour a week in the schools, once you have

the okay from the Superintendent of the School Board.

CHESS AS EDUCATIONAL SUPPLEMENT

KH: One of the things we're interested in is assembling studies of demonstrable improvement in educational achievement such as the *de Groot* study from Belgium. He was the first to demonstrate by studying school children given chess lessons, and also a control group who weren't. After two years, they scored measurably better in mathematics, reading. I personally feel that learning some deeper maneuvers aside from just moving the pieces has to influence the way you perceive the other things you do in your life... I have the feeling that it's beneficial in many respects.

GK: I'm gonna ask you a question; you really believe that?

KH: Yes, I do.

GK: I don't, I don't believe it, because you see... take Bobby Fischer, take him... why don't you take him, for heaven's sake? (laughter) Marvellous chess player, there is nobody better. We are not talking about his ability as a chess player.

KH: But he came to chess himself. These are children who were given chess lessons as part of an experiment, did not know they were in an experiment, may never have been attracted to chess otherwise.

GK: Yes, but the same thing might also have been true if they would have been given lessons in art. Or anything of that kind.

KH: Possibly so.

GK: You see, you want to make the children geniuses. I am against it. I want the children to play chess. I want them to learn how to play and that's all. (You want) to make champions of them. One of the things here in the United States has always been that the first thing they learn is they want to be a champion. They want to beat "X". That's their main objective... You learn how to play chess. Well, if you can win that's the better, naturally. I'm not talking about the better player, I'm talking of the mere beginner. He learns how to play, he immediately wants to be champion. If he isn't champion then something's wrong with the game. He doesn't realize that before he can win he's got to lose, he must lose a lot of games before he can win. All right, try and explain that to someone. In other sports it might be different...

WR: I try to tell my students that becoming a chess master is like becoming a master of anything else; music, art, it's not any easier to become a chess master than it is to become a master musician or a master artist.

THE BASE OF THE PYRAMID

GK: If you can get the children to play chess, you're going to get a lot of masters, you are going to have a lot of tournaments, and you're going to get a lot of support for chess.

Every TV station will have to give chess programs, if all the children know how to play. But if they don't

Thursday in the City with George

CONTINUED FROM PAGE 3

know how, why should they watch it? They can prefer to watch Felix the Cat, or what have you.

WR: I think that is the correct attitude.

GK: You see, most of them believe we will find the next Bobby Fischer. We don't need a Bobby Fischer. We need a lot of good players. We need a lot of players from which we get a lot of good players. How did the Russians dominate chess? I'll never forget that when they first started to teach chess in the schools in Russia I was in Belgium then, and we joked about it. I said, "Well, naturally, they're teaching chess so that they can send the people to Siberia and have something to do there." (laughter) Look how it backfired. They've got the best chess players because they have the most chess players. It is very simple. They have over 2½ million members in their Federation!

Once you play chess and you're out of your childhood days, you should learn better chess. Then you have to give them a better course. That's something else. I'm not discussing that. I'm talking of children between the ages of 6 and 10. Why must they be champions? Let them learn how, first of all. Then they're not going to be afraid. I've been to hospitals where elderly people, retired people have learnt the game at age 60 or 65, and I go there and they're excited. Many have told me, "We're sorry we never learnt the game at the age of 10 or 15 or whatever. Because today, if you don't learn something at an early age, there are too many things happening.

KH: Yes, you get swept up in it.

GK: And they are not gonna learn it at the age of 20 25. Have you ever checked in your membership how many learnt the game at what age?

KH: That's going to be on our survey. We're about to do a survey of Northern California chess players.

GK: Try it! You'll be pleasantly surprised. It's something we don't realize, it's necessary.

IMPORTANCE OF TAX STATUS

GK: ...First get your 501(c)(3), then start promoting on a big scale. I still think this idea of mine of a party, an evening, an afternoon. Give them a show. If I can make it I'll be there. But I can't tell you at this time... I'm getting older and older and older, but...

KH: We'll send the limo down!

GK: Hah! You may have to. But the point is that it is something which should be done...that's the only way you can sell it on a better basis, on a large basis... But the thing is, it has got to be done where you sell the idea of support to members, organizations, people, anybody. And I think you can do it, because you have the support of city hall to a certain degree.



WR: Yeah, I've got my foot in the door.

GK: I cannot judge the circumstances in Rohnert Park from San Francisco. That you charge is fine, that's not what I'm criticizing. I'm not criticizing anything, except, if you are going to have a tax-free association, and they're sponsoring youth chess, then they can't charge, but they can pay for it.

KOLTANOWSKI BOOKS

GK: (on his Colle System) I decided to write something that would be easy to learn, easy to play. If they play a stronger player, they lose no matter what you teach them!

KH: That's right, but it certainly gives them survival into the middle game.

GK: But I never thought it would go to 12 editions. 11 now. I mention it because my books are not sold in stores. They want something with an autograph, and I am willing to autograph anything they want.

FISCHER COLLECTOR'S ITEM

KH: Are these new books, George? I haven't seen this one.

GK: That's TV Chess. That's (published by) KQED. These are the programs I had on KQED. Now for example here we have Fischer, I ask you, Bobby Fischer, right? I could only give one game. (on TV) I couldn't give all the games that he played since there was no time for it. Here is a collector's item. That was when he played in the Junior Championship in San Francisco. They weren't published anywhere else, only here. So I could only give one game, but (holding out the book) here I give all the games he played. That in itself, people would give a right eye for, those who collect the Fischermania.

WR: They're not published anywhere else?

GK: No! Only I have the copies. The last copies that are left, I've got 'em. These have become quite the collector's item. (holding up Chess-nicdotes I and II) The difference is, I believe (autographing), now it's spoiled.

KH: I don't know, it's not exactly defacing, you know. I don't have America Salutes Comins Mansfield.

GK: First of all you have one of the greatest problem composers in all

of England. They got me to write the forward. I'm not much of a problem composer, so why did they put my picture in? It just kills me. I was quite surprised that they did this!

KH: It's because where ever your picture appears it adds dignity to the whole rest of the book!

GK: I don't know. I think that it spoils it, but then, what the heck! If that's what they want. They used about ten of my problems which made me all at once a problem composer. The only time I ever do that is when I'm on the plane, where I have nothing else to do. And then I will do these things. It's fun. And when you write a chess column, then you better know something about problems and use them because you get answers on them. On 364 days, nobody says a word. On the 365th day, there's a mistake, (laughter) and everybody and his dog is yapping. They go, "Koltanowski! Koltanowski!" But what can I do?

TILL THE NEXT TIME...

KH: Thank you for all your help.

GK: I don't know if it has helped you. I have just tried to steer you a little bit on the right side of the thing, because you don't want to succeed and then flop right before you do it. If you want to succeed you've gotta do it the right way.

KH: The only problem we have is we all have to work for a living and do other things with our lives, and so forth.

GK: That is a shame! (laughter) There's nothing you can do about it, though. I mean, as long as you do make a living, that's the main thing.

KH: Yes! Nothing happens quite as fast as we like it to. But if we keep at it, it seems to happen. And that's what really matters to us.

GK: All I ask is that when you do have something going, keep me informed. It won't hurt. But give me ample time, that's the problem. The trouble is I have no car, so I cannot come to you.

KH: Oh, that's fine. We wouldn't expect you to come, I mean...

GK: Why not? I wouldn't mind coming on a Saturday afternoon to your club, but, ah, if I did, would I see any chess players? (laughter) I have never seen any before, you know.

We wish to express our gratitude to George Koltanowski for giving us the benefit of his experience promoting chess for youth. George has written 27 chess books in four languages, and he holds the World Blindfold Simultaneous Chess Championship Record of 24 wins 10 draws in 13½ hours, Edinburgh, Scotland, September 20, 1937. "In the Dark" is his autobiographical collection of over 100 blindfold games.

Kolty will autograph your personal copy of this or any other of his books. "In the Dark" \$9.95 + .60 sales tax + \$1.00 postage & handling (total \$11.55). "TV Chess," "Colle System," and "America Salutes Comins Mansfield" (Introduction and problems by GK) are \$5.50 each + .33 sales tax + .50 postage & handling (total \$6.33). Order directly from

George Koltanowski
1200 Gough St. Apt. D-3
San Francisco, CA 94109

The Ninth Rank

LETTERS TO THE EDITOR

THE NINTH RANK

Our "Letters to the Editor" column is officially christened. Submit your views on issues of import to you legibly printed or typewritten, for THE NINTH RANK. I won't print every letter, and I'll probably edit overly lengthy submissions. But in each issue, I promise to print one or more letters regarding matters of keen topical interest to local players, and I guarantee the substance of opinion expressed in those letters shall remain intact.

Submit all correspondence to
OPEN FILE

200 Avram Ave. Rohnert Park, CA 94928

Dear Editor,

The following game was played in the last round of the January Rohnert Park Winter Open Chess Tournament.

Boral Menas - Paul Enright
Rohnert Park, 1987
King's Indian Defence

1 d4 Nf6 2 c4 g6

Being 4-point behind the leader (Tony D'Aloisio) I had to play for a win. For this the King's Indian is a better choice than my usual Nimzo.

3 Nc3 Bg7 4 e4 d6
5 Nge2!

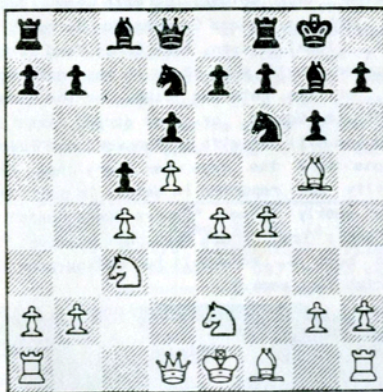
Recently played often. Seirawan and others transpose to a Saemisch (f3, Bg5, Qd2, etc.). Typically, Boral has something even more aggressive in mind.

6 ...0-0 6 Bg5 Nbd7
7 f4!

White takes a huge center but falls behind in development. The following moves transpose into a type of Benko Gambit. This is even more sound than the usual Benko, since White has made so many pawn moves.

8 ...c5 8 d5

BLACK



WHITE

8 ...b5! 9 cxb5 a6
10 bxa6 Bxa6 11 Ng3 Bxf1
12 Nxf1 Qa5 13 Nd2 Rfb8
14 Rb1 Nb6 15 0-0 Na4!

The mark of a sound positional gambit is that Black does not fear trading queens. In the endgame the pressure is just as strong.

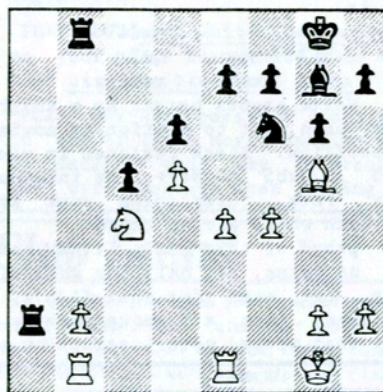
16 Nxa4 Qxa4 17 Qxa4 Rxa4
18 Rfe1 Rxa2 19 Nc4



CHESS FOOL IN' AROUND THE GOLDEN GATE BRIDGE

Rohnert Park Chess Club secretary Keith Halonen is victimized by club historian Paul Bishop's "Fool's Mate," during the Golden Gate Bridge walk Sunday, May 24. This shortest of all possible chess games consists of two moves for each player. Keith and Paul claim it is also the longest game of chess ever played on the exact center of the Golden Gate Bridge span.

BLACK



WHITE

19 ...Ra4?

In most tournament games there will come 1 or 2 critical positions where one must take considerably more time than usual to plan ahead. The transitions from opening to middlegame and middlegame to ending require a shifting of gears to a new situation in order to find the right plan. Once it is found subsequent moves are played more rapidly.

Very strong in this position was 19...Rbb4! 20 b3 Ng4 21 hs Bd4+ 22 Kh1 NF2+ 23 Kh2 f6 24 Bh4 Nd3 25 Rf1 Nb2 26 Nb2 Rxb2 27 Rxb2 Bxb2. Since there are two weak points at b3 and e4 Black wins a pawn. The ending is easily won.

I found this pretty forcing variation at home after about 30 minutes thought. This tournament involved a 40/90 time control. Anyone taking 20-

30 minutes at critical positions will end up in horrible time pressure. A control of 30/90 or 40/2 would allow a much higher quality of play. The move played was a superficially reasonable move decided after 4-5 minutes. With a 40/90 time control my level of play involves looking three moves ahead and hoping I haven't hung any pieces.

20 b3 Rab4 21 Bxf6 Bxf6
22 e5 dxe5?
Better is 22...Bg7 23 exd6 exd6 24 Nxd6 Rxf4 with Rd4 to follow.
23 fxe5 Bg5 24 d6 Rxb3
25 Rxb3 Rxb3 26 Rd1 exd6
27 exd6 Rb8 28 Rd5 Bd8
29 Rxc5 Kf8 30 Kf1 f6
31 Ke2 Kf7 32 Kf3 Ke6
33 Ke4 h5 34 h4?
We both have no time.
34 ...f5+ 35 Kf3 Rb3+
Just 35...Bxh4 is winning. The rook is misplaced on b3, but it's hard to resist a check in time pressure - and just as difficult to admit.
36 Ke2 Bxh4 37 Rc7 Bf6?
Better is 37...Bg3 38 Re7+ Kf6 39 Re8 Rb7.
38 d7 Bd8 39 Rc6+ Kxd7
40 Ne5+ Ke8 41 Nxc6 Rb6
42 Rxb6 Bxb6 43 Nh4 f4
44 Kf3 Bc7 45 Ng6 Kf7
46 Nxf4 Bxf4 47 Kxf4 Kg6
48 Kg3 Kg5 49 Kh3 h4
50 g3 h-h

Paul Enright
Rohnert Park

So you don't have a letter's worth of gab? Why not submit a brief suggestion or criticism on any chess-related topic? Submit to

OPEN FILE

200 Avram Ave. Rohnert Park, CA 94928

Annotations

GAME ANALYSIS

A FRIENDLY GAME

Donald T. Steers - Gene Butcher
Santa Rosa, 1983

Queen's Gambit Declined
Marshall Defence

Analysis by Don Steers

You don't always have to look into depthful master-level games to find instructive positional play. I often employ this friendly game in my chess lessons since it contains a wealth of educational examples.

1 d4 d5
2 c4 Nf6

The Marshall Defence, merely a dubious move. This is an inadequate way of meeting the pressure on d5. If 3 cxd5 Qxd5 4 Nc3 loses Black a tempo while removing the queen to safety. If 3 ...Nxd5 4 e4 the classic pawn advance, forcing the Black knight to retreat, costing a tempo. At this point the game seems to be playing itself.

3 cxd5 Nxd5
4 e4 Nf6
5 Nc3 Nc6

ECO III (Minev) gives 5 ...e5 6 Nf3 exd4 7 Qxd4 Qxd4 8 Nxd4 Bxd4 9 f3 c6 10 Bg5 Nbd7 11 0-0-0 h6 12 Bh4 0-0 13 Nf5 +=.

6 Nf3 Bg4

Pinning knight to queen, but at the same time affording White an opportunity to create potential mayhem.

7 d5 Bxf3

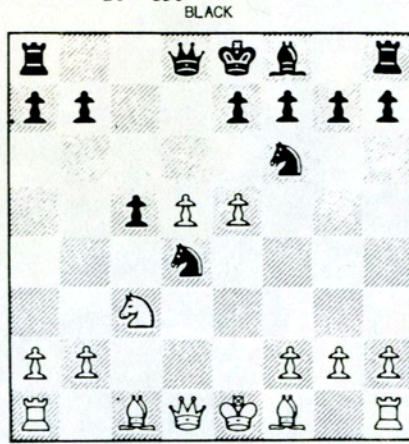
Not 7 ...Ne5? 8 Nxe5; Bxd1 9 Bb5+ c6 (the only move) 10 dxc6 (with the idea of 11 cxb7+ or 11 c7+) 10 ...a6 (again the only move) 11 c7+ axb5 12 cxd8=Q+ Rxd8 13 Nxd1 +-.

8 Qxf3 Nd4
9 Qd1

Tit for tat. Now Black must defend the aggressive knight.

9 ...c5?!

Better is 9 ...e5 as we soon see.
10 e5!



To trick Black into 10 ...Nxd5. But I might have tried 10 f4! e6 (the logical response) 11 d6! If 11 ...Bxd6 or ...Qxd6 12 e5 +-.

A painful pawn fork! Due to the threat of winning a piece, Black cannot stop me from getting this threatening pawn formation.
10 ...Nxd5?

Black takes the bait! 10 ...Nd7! is really the only move.

11 Qxd4!+-
I saw how important the a4-e8 diagonal might be if only the interfering d4 knight were removed. So I removed it.

11 ...cxd4
12 Bb4+ Qd7
13 Nxd5! resigns

Now White stands better by a knight for a pawn, not to mention an enviable position. Black resigned in view of 13 ...Qxb5 14 Nc7+, the infamous Family Fork, threatening rook and queen both while giving check!

I'm proud of this game. It has many kinds of value, not only for what did happen, but even for what didn't. I have never seen a 13-move game by a master that packed more instruction.

Long Diagonal

LOOKING BACK

This column will be an occasional OPEN FILE feature about Redwood Empire chess history.

Courtesy Santa Rosa Press Democrat

SONOMA COUNTY CHESS CLUBS AND EVENTS TODAY: (April 6, 1975 - ed.)

Santa Rosa: Santa Rosa Chess Club meets at Barnett Hall, Room 142, on the campus of Santa Rosa Junior College, Fridays 7-11:30 p.m. Visitors welcome.

Rohnert Park: A chess club for juniors (under 16) meets in Room C-2, Rohnert Park Junior High School, Mondays, 7-9 p.m. except school holidays.

Petaluma: Contact Don Melixell, 1650 Peggy Lane, Petaluma 94952.

TOURNAMENT: Third Annual Rohnert Park Open Chess Tournament will be April 19 and 20. Contact: Clement E. Falbo, 742 Bonnie Ave., Rohnert Park, 94928.

This summer's \$5 million chess match scheduled between Bobby Fischer and Anatoly Karpov might have made 1975 a part of the "golden age of chess," but to a local chess player, the "good old days of chess" occurred approximately 30 years ago.

Dr. Clement Falbo, professor of mathematics and faculty chairman at California State College, Sonoma, remembers the days when chess competition was at a high level in the North Bay area. Santa Rosa's team seemed to be able to defeat any other team around.

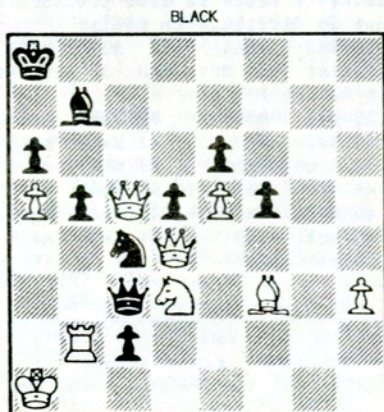
"Those were the days when International master George Koltanowski made his home in Santa Rosa where he would entertain famous chess visitors from all over the world. Example: Late in 1948 and in early 1949, Dr. Max Euwe, former World Chess Champion, was Koltanowski's guest and these two "superstars" were playing chess with people from Santa Rosa, Sebastopol, Petaluma, Cotati, and Sonoma," Falbo recalls.

Those were the days when local chess players, like Sam Goertzel, Joe Lesh, Sherman Walker, Brand Johnson, Tom Shoemaker, Frank Schneider, Gus Wolman, Lorenzo Campi, Judge B.C. Jenkins, Roland Goudswaard, Berman Mitchell, Lionel Wolfson, Alex Sokol, and Gunnar Resmussen would play chess in the Santa Rosa Club, or the Petaluma Club, or the Sonoma Courthouse Square, or even during dinner at the Green Mill Inn with Koltanowski and Euwe.

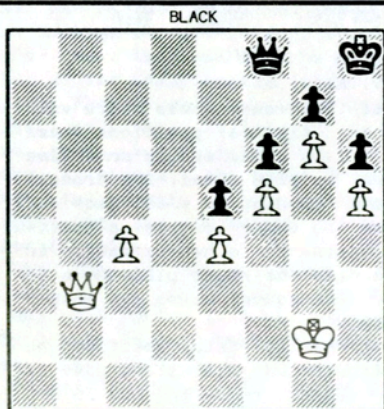
Those were the days when every chess club activity was reported in detail in Koltanowski's weekly column: "Empire Chess Chats" in The Santa Rosa Press Democrat. Example: "G. Baden beat W. McConnell two rating games at the club last week."

COMBO LAB

A pair of instructive middlegame combinations from recent COMBO LAB sessions conducted by Will Rodgers and Don Steers, U.S. Chess Federation rated experts. See CHESS TIVITIES column for your Combo Lab Famous Player's schedule.



WHITE

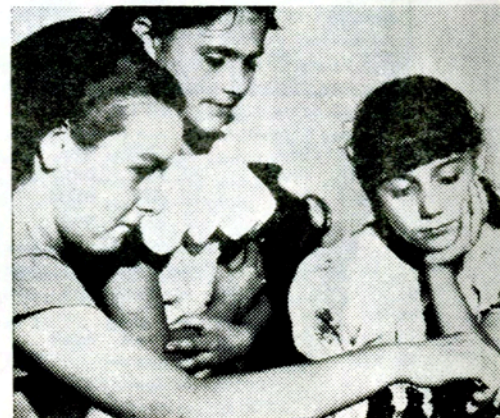


WHITE

B: NESIS - KOLKER (corr.) 1979
BLACK TO MOVE FOR EQUALITY

A: 1...Qxh5+ 2 Rf2 Qe1+ 3 Nxe1 f1=Q# (3 Bd1 ccl=Q+ 4 Nc1 Qxc1# or 2...Qx5+ 3 Rf2 cl=Q+ =Qxc4#) B: 1...Qg8! 2 Qb5 Qxc4# 4 Nxc1 Qxc1#

A: TCHIGORIN - BLACKBURN 1898
BLACK TO MOVE WITH MATING ATTACK



And the Winner is ...

PROBLEM COMPETITION

AND THE WINNER IS...

Bruce Warren, who correctly identified the key move 1 Ba1.

William L. Barclay constructed this incomplete block problem which got an honorable mention in Chess Life 1967. Barclay claimed it "proved very difficult for most solvers."

Random moves of Black's Rook in the e-file are foiled by 2 Q b7; 1...Re5, 2 Rxe5; 1...Rxe4, 2 Qxe4; 1...eR any on rank (Rc6), 2 Re5; 1...dR random on rank (Rxe2), 2 Qd3 or Rd4; if 1...Rb2, 2 Qd3; and 1...Rc2, 2 Rd4. Talk about fianchetto. Congrats, Bruce!

SIMPLIFIED PROBLEM SOLVING RULES!

- 1 NO GUESSING! Follow these steps to properly solve this problem. If you submit an incorrect key move, you are disqualified, because you disregarded these rules.
- 2 NO BOOKS! NO COMPUTERS! Only human beings on their own are eligible!
- 3 WRITE DOWN all of Black's possible replies, not just moves you'd make as Black... ALL possible Black moves after white's key move.
- 4 PLAY OUT each of Black's possible replies on a real chess board, then WRITE DOWN each of White's checkmating moves.
- 5 PLAY OUT each White checkmate move on your chess board, and then WRITE DOWN all possible Black moves.
- 6 PLAY OUT each possible Black move. If one of those moves enables Black to escape, your key is wrong. If you were thorough when writing down

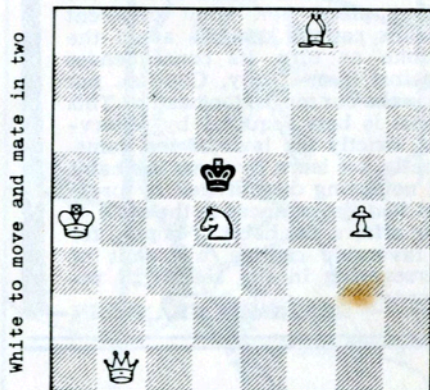
all of Black's possible first moves and all of White's possible second moves, and all of Black's possible second moves, and you have actually played out all possible variations on a real board, and you find no second move permitting Black's escape from checkmate, then you have the correct key move.

- 7 WRITE DOWN the key move White has to make to seal Black's fate, phone 707 795-9377. If a machine answers, leave your name, phone number, and the key move. Only phone claims will be honored.

And what does your effort get you? \$5.00. You are eligible for one prize only over the course of any four problems in the competition. If a problem is unsolved at the publication of the answer in next issue, the jackpot is increased \$5.00.

And now, this edition's problem is dedicated to the Redwood Empire Chess Association by the Dean of American Chess, Mr. George Koltanowski.

BLACK



WHITE

Those were the Incredible days when you could play George Koltanowski by mail through the newspaper! You sent him your move on a postcard, then The Press Democrat would publish his answer to your move in the "want ads."

Those were the days of the "Chess Queens of Benton Way," six little girls, approximately 10 years old, who were playing chess and getting their pictures in the paper - Marilyn, Florine, Linda, Alta, Carol, and Jo Ann.

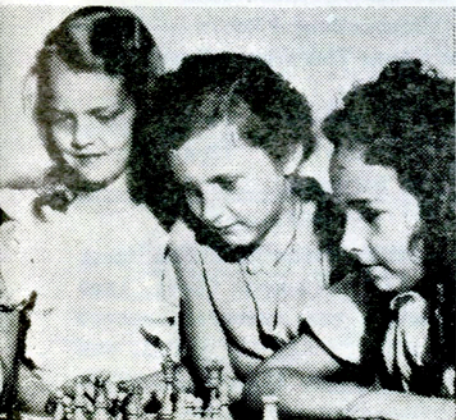
Those days may be over, but there is currently a revival of chess in this area, and it didn't just start with the Fischer-Spassky match. In 1965 a couple of new young players from Rohnert Park (Lee Henderson and Stephen Kornher) made their debut in the Santa Rosa Chess Club; they are currently rated as U.S. Chess Federation Expert and Master, respectively. A high school chess league was started by the players at Rancho Cotati High School. Good young players in Santa Rosa, Cotati, Petaluma, Penngrove, Sebastopol, and Rohnert Park have begun to emerge. The Santa Rosa Chess Club again had a winning team in the early '70s.

According to Falbo, Sonoma State College became a major factor in rekindling chess enthusiasm in this area, and the Rohnert Park Cultural Arts Corporation started supporting chess tournaments with money. (\$300, not quite \$5 million, but more than was available locally for any previous tournament.)

Many of the oldtimers are still around. Sherman Walker is still the "trappiest" chess player at the Santa Rosa Chess Club, says Falbo. Joe Lesh has quit playing tournament chess and has donated his chess library to Sonoma State College. Brand Johnson appeared at the 1970 Sonoma State College Open Chess Tournament to take pictures. Gus Wollman, Frank Schnelder and Sam Goertzel played in the 1969 Sonoma State Open. Roland Goudswaerd tied for firstplace in the 1973 Rohnert Park Open Chess Tournament.

Others participated in many recent chess events. Example: Two grandmasters have recently given simultaneous exhibitions at Sonoma State, and the oldtime Sonoma County Chess Players were out in force to play against them. National Master Jude Acers came in 1972 and the same players challenged him. Sherman Walker even caught Acers in a trap. Koltanowski, who is a lifetime member of the Santa Rosa Chess Club, comes back to visit once in a while.

Clement E. Falbo, Ph.D., is the author of FINITE MATHEMATICS APPLIED, (Wadsworth, Belmont, CA) which contains an introduction to game theory.



Club Scene

To publish your club news, recent events, & rating roster, your club must apply for the OPEN FILE CLUB DEAL. The DEAL offers considerably more than a mere subscription. Find more details and coupon in the MEMBERSHIP column.



Allred, James	unrated	Meadows, John W.	1376*13
Amero, Vince	1674*17	Munoz, Carlos E.	1607*16
Armstrong, Allen R.	unrated	Nieze, June	unrated
Atkins, Arthur C.	unrated	Nottingham, Brian	1827*18
Belladone, David C.	unrated	Pedersen, Paul	unrated
Bishop, Paul	1239/04	Randle, Walter W.	1681*16
Brosseau, Richard	1458/16	Rodgers, William A.	1982*20
Clayton, Robert S.	1546/15	Sommer, Red	unrated
D'Aiolsio, Anthony	2282*22	Stoers, Donald T.	2078*21
Emerick, Paul R.	1053*10	Sutcliffe, Edward	unrated
Enright Jr., Paul M.	2256*22	Yoss, Kenneth F.	1648*16
Falbo, Clement E.	1712*17	Warren, Bruce	unrated
Folkman, Frank D.	1828*18	Wharton, James M.	1445/06
Gervasoni, Daniel J.	1760*17	Devis, Raymond	unrated
Halonen, Keith W.	1462*15	Dracopoulos, James	unrated
Hampton Jr., Robert W.	1751/10	Eakle, David P.	1372/06
Harrison, Allan	1639/10	Epperson, Douglas	unrated
Hock, Paul T.	1681*17	Lynch, Timothy J.	1387/13
Holland, Robert W.	unrated	Monday, Stella	1447*14
Hummel, James	1546/15	Pollock, Rendell	1286/11
Judkins, Kris	1940*21	Sanchez-Chopitea, Lou	1742*12
Koltanowski, George		Wheeler, William	unrated
Krohn, Victor E.	1651*16	Young, Glen R.	1495*14
Manetti, Peter			

RPCC welcomes new members James Allred, Vince Amero, Allen Armstrong, Art Atkins, Bob Hampton, Bob Holland, June Nieze, Red Sommer, and James Wharton. May Calssa guide your moves!

For RPCC hours & area map, see PLACES TO PLAY

RPCC ELECTION

On Monday, May 18, 13 of 34 current members of RPCC met at the Liman Way Rec Center club site to vote on the RPCC club Presidency. Walt Randle was not certain he wanted to continue in office unless he could delegate some of the tasks attendant to club operations. A vote was taken and 8 ballots decided Walter is to continue as President. A timely arrangement was made with Vice President Will Rodgers, who agreed to take over some Monday night duties.

Keith Halonen persuaded Bruce Warren to assume the Treasurer's position as of July 1. This will free up time for Keith to concentrate on his office as Secretary and publisher of RECA's OPEN FILE newsletter.

Paul Bishop was appointed RPCC Historian, another task formerly handled by Keith Halonen. Keith pointed out that these started out as many small tasks that evolved into more complex versions of their original original patterns. The RPCC club Historian keeps a record of club activities and collects any press coverage and club memorabilia. Paul is also to take office on July 1.

Open Lines

GUEST EDITORIAL

Life is a kind of chess, in which we have points to gain, and competitors or adversaries to contend with, and in which there is a great variety of good and ill events, that are, in some degree, the effects of prudence and the want of it. By playing at chess, then, we learn—1st, Foresight, which looks a little into futurity, and considers the consequences that may attend an action; for it is continually occurring to the player. "If I move this piece, what will be the advantage of my new situation? What use can my adversary make of it to annoy me? What other moves can I make to support it, and to defend myself from his attacks?" 2ndly, Circumspection, which surveys the whole chessboard, or scene of action, the relations of the several pieces and situations, the dangers they are respectively exposed to, the several possibilities of their aiding each other, the probabilities that the adversary may take this or that move, and attack this or the other piece, and what different means can be used to avoid the stroke or turn its consequences against him. 3rdly, Caution, not to make our moves too hastily. This habit is best acquired by observing strictly the laws of the game. Lastly, we learn by chess the habit of not being discouraged by present bad appearances in the state of our affairs, the habit of hoping for a favorable change, and that of persevering in the search of resources.

BENJAMIN FRANKLIN

PLAYERS' RIGHTS & RESPONSIBILITIES

Chapter 9

USCF Official Rules of Chess

Effective May 1, 1987

Every Player Has the Right to Expect:

- 1 That the tournament director is reliable and has a knowledge of the laws of chess, as per USCF standards.
- 2 That the tournament director has in his possession an official USCF rulebook on the premises during the tournament.
- 3 That any special rules that are pertinent to that particular tournament will be announced and posted; for example, 50-move rules, tiebreak system, time-forfeit procedure, and so forth.
- 4 That the pairing system used is fair and impartial and that it will be administered uniformly.
- 5 That the starting time of the rounds will be posted and that the rounds will start reasonably on time.
- 6 That conditions such as lighting, space requirements, noise, etc., be at an acceptable level conducive to good competition.
- 7 That tournament directors be available in case of protests and at all time controls.
- 8 That the round results will be posted in a timely fashion.
- 9 That upon request, a tournament director will initiate the appeals process and appoint an Appeals Commission.

Tournament Update

To list your upcoming tournaments and post-tournament results in TOURNAMENT UPDATE, your club must apply for the OPEN FILE CLUB DEAL. The DEAL offers considerably more than a mere subscription. Find more details and a coupon in the MEMBERSHIP column. Join RECA and save!

ANNOUNCING: THE -30-30-30- TOURNAMENT

- 1 A year-long in-club competition open to dues-current members of Rohnert Park Chess Club.
- 2 Entry is FREE.
- 3 1st time control is 30 MOVES in 30 MINUTES, and...
- 4 First Prize is a \$30 USCF GIFT CERTIFICATE, donated by an anonymous local software service. It is good toward purchasing equipment or books.
- 5 A second 15-minute SUDDEN DEATH time control will take effect as Black makes a timely 30th move.
- 6 Games must be played according to international rules ("touch move").
- 7 Games must be recorded in the usual manner UP TO THE 30th MOVE. Submit the signed scoresheets to Clem Falbo or Keith Halonen, directors of the tournament. A win = 1 point; a draw = ½ point. The standings will be posted on the -30-30-30- wall chart at RPCC.
- 8 The winner is the player accumulating the most points (10 pts. min.) by December 31, 1987.

For RPCC hours & area map, see PLACES TO PLAY

ROHNERT PARK
TOURNAMENT CHESS CLUB
PRESENTS A FIVE ROUND
USCF-RATED SWISS ACCELERATED
GAME/30 TOURNAMENT

SATURDAY, SEPTEMBER 19, 1987
AT THE ROHNERT PARK CHESS CLUB
LADYBUG REC CENTER
8517 LIMAN WAY, ROHNERT PARK, CA

ROUNDS:

10 AM, 11:30 AM
2 PM, 3:30 PM, 5 PM

OPEN PRIZE: \$250 GUARANTEED

CLASS PRIZES

(MIN. 10 PLAYERS OR CLASS PLAY UP)

EXPERT - \$100 / A - \$80

B - \$60 / C & UNDER \$40

UNRATED IN OPEN ONLY

ONE PRIZE PER PLAYER

ALL PLAYERS PLAY FOR OPEN PRIZE

ENTRY FEE \$25

IF POSTMARKED BY SEP 14

\$35 AT THE DOOR

REG, PRE-REG CHECK IN 8:30-9:30 AM

MAIL INFO & CHECK TO WALTER RANDLE

842 LILAC WAY, ROHNERT PARK, 94928

Players' Responsibilities:

- 1 To conduct themselves in an orderly fashion.
- 2 To compete in a spirit of good sportsmanship.
- 3 To be present at the starting time for each round.
- 4 To obey the laws of chess.
- 5 To conform to the USCF code of ethics.

ROHNERT PARK
TOURNAMENT CHESS CLUB

AUTUMN OPEN

SAT OCT 17 - SUN OCT 18, 1987
AT BURTON AVENUE REC CENTER
7421 BURTON AV, ROHNERT PARK, CA

ROUNDS:

SAT 10 AM, 2 PM, 6:30 PM
SUN 10 AM, 3 PM

OPEN PRIZE: \$350 GUARANTEED

CLASS PRIZES

(MIN. 10 PLAYERS OR CLASS PLAY UP)

EXPERT - \$150 / A - \$125

B - \$100 / C & UNDER \$75

UNRATED IN OPEN ONLY

ONE PRIZE PER PLAYER

ALL PLAYERS PLAY FOR OPEN PRIZE

ENTRY FEE \$30

IF POSTMARKED BY OCT 12

\$40 AT THE DOOR

REG, PRE-REG CHECK IN 8:30-9:30 AM

MAIL INFO & CHECK TO WALTER RANDLE

842 LILAC WAY, ROHNERT PARK, 94928

SEND S.A.S.E. FOR REG CONFIRMATION

GEORGE KOLTANOWSKI

THE DEAN OF AMERICAN CHESS

PLANS TO ATTEND

JAN 10-11 ROHNERT PARK WINTER OPEN

Tony D'Aloisio, RPCC Champion, took the \$350 1st prize with his perfect 5.0 against one other master and a battery of 8 experts! The 2nd place \$150 prize was divided 5 ways to Michael Anderson, Thomas Stevens, Thomas Kyrimis, Marc Weeks, and another resident master, Paul Enright.

MAR 7 - APR 12 RPCC SPRING QUAD

Walt Randle walked away a full point in charge of 1st place, leading Allan Harrison in 2nd with 3.5 points out of a possible six. James Wharton and Frank Folkman came in 3rd by ½-point. Walt solidifies his reputation as the fastest woodslinger this side of the ninth rank.

APR 18-19 ROHNERT PARK SPRING OPEN

Marc Leski and Steven Cross divided 1st and 2nd place prizes that totaled \$450 in this 17th (count 'em) Annual Spring Open. With 4.5 points they led master Tony D'Aloisio, who scored 3.5 along with experts Jaroslav Skrenek and Jerry Walls.

OCCIDENTAL CHESS CLUB

Double Round Robin

Speed Chess Tournament Results

July 7, 1987

Peter Manetti 14-2

Denny Davis 12-4

Dan Gervasoni 11-5

Will Rodgers 9-7

If you play tournament chess, keep current with the recently updated USCF OFFICIAL RULES OF CHESS, now available through RECA's BOOKPLAN

Chessivities

EVENTS AND ACTIVITIES

COMBINATION: a series of forcing moves having a clear beginning and finish grounded in tactics. A sacrifice is usually present. The object is anything from a defensive resource to a mating attack, from a small positional advantage, to material gain. Essential to most combinations and the main reason for their popularity is surprise; the series of moves differs in form from the expected continuation.

REDWOOD EMPIRE CHESS ASSOCIATION
TAKES PLEASURE IN PRESENTING
AT ROHNERT PARK CHESS CLUB

COMBINATION LAB FAMOUS PLAYERS SERIES

CO-HOSTED BY USCF-RATED EXPERTS WILL RODGERS AND DON STEERS. COMBO LAB EXAMINES 4 OR 5 CATEGORIES OF CHESS MIDDLE GAME COMBINATIONS AT EACH SESSION.

MONDAYS 8:00 - 9:00 PM

OCT 5 ALEKHINE NIGHT DON STEERS
NOV 2 CAPABLANCA NIGHT WILL RODGERS
DEC 7 TAL NIGHT DON STEERS
JAN 4 FISCHER NIGHT WILL RODGERS

There is no charge for RPCC Combo Lab but you must be a dues-current member of RPCC to attend. RPCC is located at 8517 Liman Way, Rohnert Park. See the PLACES TO PLAY column for the RPCC schedule and area map.

PLACES TO PLAY

If you provide regular space to chess players in the Redwood Empire, list the available playing hours in PLACES TO PLAY. Just send us a legibly printed or typewritten schedule, including the location address. RECA is dedicated to promoting chess, always regarding it as an educational supplement with the secondary attribute of being a therapeutic recreational pastime. PLACES TO PLAY listings are free.

OCCIDENTAL CHESS CLUB

TUESDAYS 7:00 PM - MIDNIGHT
UNION HOTEL
MAIN ST. OCCIDENTAL

LOCATED IN THE ANTEROOM OF THE EXCELLENT UNION HOTEL ITALIAN RESTAURANT, OCC OFFERS REGULAR HOURS FOR FORMAL GAMES OR SKITTLES AND SPEED CHESS. RESTAURANT SUPPLIES COFFEE.

707 869-3208

PAPA RON'S

MON-FRI 9:00 AM - 1:30 PM
EVERY DAY 6:30 PM - 11:00 PM
1206 MENDOCINO AVE, SANTA ROSA

CHESS PLAYED ANYTIME. EXCELLENT COFFEE BAR, JUICE & OTHER BEVERAGES, FINE FOOD.

707 523-1855

LONGEST GAME

STEPAK-MASHIAN, ISRAEL 1980

(see Longest Pawn Immobility)

193 moves. Black blundered on move 186.

He could have persisted to move 210!

LONGEST UNMOVED KINGS

KASPAROV-KARPOV, MOSCOW 1984

Garril's on move 34, Anatoly's on move 37!

To list your club events & activities your club must apply for the OPEN FILE CLUB DEAL. The DEAL offers considerably more than a mere subscription. Find more details and a coupon in the MEMBERSHIP column. Join RECA and save!

"THE ENDGAME is where you can discover the full potential of the pieces. Knowledge of general endgame principles will influence the middle game and even the opening stages of the game. Endgame knowledge is very important if you want to win more games. This course is directed at players of any skill level who want to improve their game." Peter Manetti

REDWOOD EMPIRE CHESS ASSOCIATION
PRESENTS

THE ENDGAME SEMINAR

HOSTED BY CHESS MASTER PETER MANETTI
AT ROHNERT PARK CHESS CLUB

MONDAYS 7:00 - 9:00 PM

AUG 3, 10, 17, 24, 31, & SEP 7

FEE: UNDER 18 YRS \$15 - 18 & OVER \$25
(DUES-CURRENT RPCC MEMBERS \$5 OFF)

The public is invited to attend. Chess sets and boards will be provided. To receive \$5 off the Endgame Seminar fee you must be a dues-current member of RPCC, located at 8517 Liman Way, Rohnert Park. See PLACES TO PLAY column for the RPCC schedule and area map.

ROHNERT PARK CHESS CLUB
WILL CLOSE SATURDAY SEP 19
FOR FOUNDERS DAY TOURNAMENT
DETAILS IN

TOURNAMENT UPDATE

SANTA ROSA CHESS CLUB

FRIDAYS 7:30 PM - MIDNIGHT
SANTA ROSA JUNIOR COLLEGE
1501 MENDOCINO AVE, SANTA ROSA
BARNETT HALL, BLDG 12, ROOM 1282

ALMOST 50 YEARS OLD, SRCC OFFERS REGULAR HOURS FOR FORMAL GAMES OR SKITTLES AND SPEED CHESS, IN-CLUB TOURNAMENTS, PERSONAL INSTRUCTION AVAILABLE - USCF EXPERT DON STEERS

707 528-9844

MARKEY'S CAFE & COFFEE HOUSE

EVERY DAY 8:30 AM - 9:30 PM
TUESDAY IS CHESS DAY
316 WESTERN AVE, PETALUMA

PETER MARKEY LIKES CHESS PEOPLE & HAS SPONSORED AN AMATEUR TOURNEY AT HIS CAFE. SCRUMPTIOUS VEGETARIAN CUISINE AT REASONABLE PRICES. SMOOTHIES, JUICES, WATERS, SODAS, REGULAR & ESPRESSO COFFEES, WINES & BEERS, PASTRY.

707 763-2429

LONGEST PAWN IMMOBILITY

STEPAK-MASHIAN, ISRAEL 1980

(see Longest Game)

2 c4, & pawn was finally captured move 173!

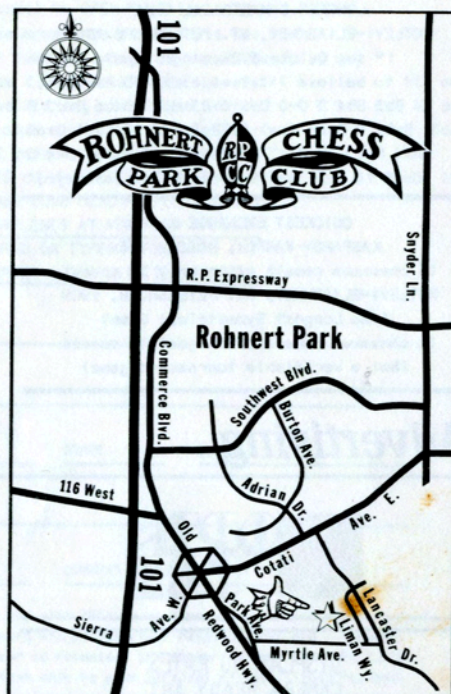
LONGEST SERIES CONSECUTIVE CHECKS

WESTERINEN-KERES, TALLINN 1969

White blundered a winning 38th move & 1/2-1/2 after 38 consecutive BQ checks!

RECA PRESENTS
ROHNERT PARK FOUNDERS DAY
SIMULTANEOUS EXHIBITION
IN THE ALICIA PARK GAZEBO
MASTER PETER MANETTI
&
EXPERT DON STEERS
CHALLENGE ALL COMERS
ON 10 BOARDS SIMULTANEOUSLY
SATURDAY SEPTEMBER 19, 1987

PLACES TO PLAY



MONDAYS 6:30 PM - 11:00 PM
SATURDAYS 11:00 AM - 5:00 PM
8517 LIMAN WAY, ROHNERT PARK

47 MEMBERS & GROWING, RPCC OFFERS REGULAR PLAYING HOURS FOR FORMAL LONG GAMES OR SKITTLES AND SPEED CHESS, A NUMBER OF RECA CHESS LABS & SEMINARS, FOUR ANNUAL USCF-RATED OPEN TOURNEYS, REGULAR & GAME/30 USCF-RATED IN-CLUB TOURNAMENTS, UNRATED IN-CLUB AMATEUR TOURNAMENTS, SIMULTANEOUS EXHIBITIONS, COMPUTER OPPONENTS, VARIETY TEAS & COFFEES.

707 795-2220 OR 707 795-9377

INTRODUCTIONS

Looking for chess play during non-club hours? If you wish to be contacted by other readers for the purpose of arranging chess at your mutual convenience, INTRODUCTIONS will publish your name, available hours, & phone number.

	Members	Nonmembers
SINGLE-ISSUE RATE:	\$ 1.00	\$ 1.35
ANNUAL 4-ISSUE RATE:	\$ 3.00	\$ 4.00

Remit fee with info legibly printed or typewritten, dated & signed to

RECA
200 Avram Ave
Rohnert Park CA 94928

OPEN FILE

OPEN FILE STAFF
 Editor: Keith Halonen
 Assistant Editor: Will Rodgers
 Contributors:
 Don Steers, Clem Falbo,
 Walt Randle, George Koitenowski



On the Move

FUTURE PLANS

RECA ORGANIZER'S PACKAGES

A chess club membership application form with survey questions similar to those on the forthcoming RECA survey will be just one part of a RECA CLUB PAC now under development. It affords RECA a multi-faceted demographic view of chess players' interests and personalities and gives clubs valuable specific information on their own members' chess interests. A companion TOURNAMENT PAC will also be offered.

The CLUB PAC can be introduced into clubs which are already formed to provide a clearer profile of the membership and more structured operational procedures, or it may be employed as a guideline for the formation of new chess clubs, an express concern of RECA in fostering chess growth in the Redwood Empire, as well as the enhancement of the general scholastic performance of Empire youth.

The RECA CLUB PAC is an answer to questions on the subject of forming and operating successful chess clubs.

In parallel development, the RECA TOURNAMENT PAC is intended to do for aspiring tournament directors what the RECA CLUB PAC should do for club organizers and management.

OPEN FILE is published quarterly by Redwood Empire Chess Association, 842 Liliac Way, Rohnert Park CA 94928. Except pre-covered items, contents ©1987 by Redwood Empire Chess Association. All rights reserved. No part of OPEN FILE may be reproduced for profit, stored in retrieval systems, or transmitted in any form or by any means - electronic, mechanical, photocopying, or otherwise - without written permission of RECA. Send submissions to OPEN FILE at its production office, 200 Avram Ave., Rohnert Park CA 94928. Return postage must accompany submissions if they are to be returned; no responsibility can be assumed for unsolicited materials. Opinions expressed are strictly those of the contributors and do not necessarily reflect any view of the Redwood Empire Chess Association. Subscription information is in the MEMBERSHIP column.

LONGEST SYMMETRICAL GAME

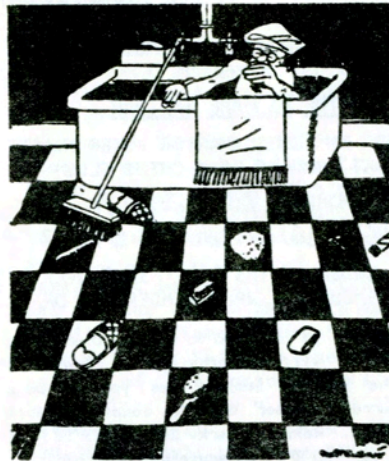
ROTLEVI-ELIASHNOV, ST. PETERSBURG 1909
 (* see Quickest Exchange Game)

See 1t to believe 1t1 1 e4 e5 2 Nf3 Nf6 3 Nc3 Nc6 4 Bb5 Bb4 5 0-0 0-0 6 d3 d6 7 Bxc6 Bxc3 8 Bxb7 Bxb2 9 Bxa8 Bxa1 10 Bg5 Bg4 11 Qxe1 Qxe8 12 Bxf6 Bxf3 13 Bxg7 Bxg2 14 Bxf8 Bxf1 15 * Qxf1 Qxf8 16 Qg2+ Qg7 & a few moves later $\frac{1}{2}$ - $\frac{1}{2}$!

QUICKEST EXCHANGE GAME

KASPAROV-KARPOV, MOSCOW 1984

16 chessmen remain after only 20 moves!
 ROTLEVI-ELIASHNOV, ST. PETERSBURG, 1909
 (see Longest Symmetrical Game)
 16 chessmen remain after just 15 moves!
 (Not a verifiable tournament game)



Advertising



DISPLAY AD RATES

CAMERA READY ART

2 3/8" BY COLUMN INCH DEPTH

	MEMBERS	NONMEMBERS
PER ISSUE	\$ 6.00	\$ 8.00
TWO-ISSUE RATE	\$ 5.00	\$ 7.00
FOUR-ISSUE RATE	\$ 4.50	\$ 6.00

CAP CLASSIFIED RATES

COUNT ALL SPACES AND PUNCTUATION

REGULAR 28 CHARACTER LINE

CONDENSED 3/4 CHARACTER LINE

PER LINE

	MEMBERS	NONMEMBERS
REGULAR	\$ 1.00	\$ 1.35
CONDENSED	\$ 1.20	\$ 1.60

OPEN FILE publishes quarterly January, April, July, and October. Camera-ready Display Ads and Cap Classified copy must be received by the 20th day of December, March, June, or October, respectively. Cap Classified entries must be legibly printed or typewritten. OPEN FILE editors retain discretionary control of ad placement policies. OPEN FILE is not responsible for advertisers' claims or product quality control. Ad content not restricted to chess-related subjects. Display ad design service is available at prevailing studio rates.

Submit ad copy & remittance to
 RECA

200 Avram Ave

Rohnert Park CA 94928

or call 707 795-9377 for more information

When
 you have a printing,
 publishing, or advertising
 project, who do you call?

A printer? Typesetter?
 Graphic artist? Writer?
 Designer?
 Advertising agency?

Call Media Matrix.
 We're all of the above,
 and more.



707/576-7764

419 E Street ★ Santa Rosa

IT PAYS TO ADVERTISE

The codfish lays ten thousand eggs,
 The homely hen lays one.
 The codfish never cackles
 To tell you what she's done.
 And so we scorn the codfish,
 While the humble hen we prize,
 Which only goes to show you
 That it pays to advertise.

Anonymous 19th-century

CONTRIBUTORS WANTED

OPEN FILE SEEKS CONTRIBUTORS. WHAT DO WE PAY? NOTHING! IT KEEPS COSTS DOWN. YOU GET: A-PUBLISHED, B-THE SELF-SATISFACTION OF COMMITTING AN UNDISPUTED LABOR OF LOVE. WRITE A LETTER TO THE EDITOR, LEAVE A NOTE IN THE "SUGGESTION BOX" OR SUBMIT A GUEST EDITORIAL. CREATE ORIGINAL CHESS CARTOONS, REVIEW BOOKS, SEND US ANECDOTES, LOCAL CHESS HISTORY.

SEE INDIVIDUAL COLUMNS FOR DETAILS

LARDY CHESS SET

FOR SALE - UNUSED WEIGHTED FRENCH BOXWOOD ANALYSIS SET. HINGED LATCH-BOX. 3 1/4 INCH KING. \$35 RETAIL. ASKING \$20 707 795-9377

PERSONAL CHESS TUTORING

21 YRS EXPERIENCE - LESSONS TAILORED TO YOUR SKILL LEVEL. \$25 PER 2-HR LESSON AT YOUR TIME/LOCATION. U.S. CHESS FEDERATION RATED EXPERT. DON STEERS 707 528-9844

En Passant

THANK YOU'S & WELCOME'S

THANK YOU

Will Rodgers, Walter Randle, Don Steers, Paul Bishop, Paul Enright, Clem Falbo, Peter Manetti, & Ken Voss at Black Sparrow. I appreciate all your help with this first major OPEN FILE publication.

SPECIAL THANK YOU

To our friends & the staff of the Rohnert Park - Cotati Clarion newspaper, for their generous nurturing coverage of our chess activities. I beg you not to sue us for swindling your RECA photo!

A VERY SPECIAL THANK YOU

To George and Leah Koltanowski for receiving Will and I at their residence, and putting up with us asking a slew of busybody questions on promoting chess for youth.

And I'll wish all readers WELCOME to the new RECA OPEN FILE!

KH

Book Move

THE RECA BOOKPLAN

MAKE A BOOK MOVE!

How does it work? Fill out a USCF order form (there's one in every copy of Chess life, or ask for one at your club) and fill it out at list prices, but do not fill in the mail handling charges; just subtotal the list price amount and deduct 15%! Turn it in to a RECA officer at Rohnert Park Chess Club with your cash, check, or money order made out to RPCC. Remember, you do not have to be a member of USCF to buy chess books at below USCF Member Prices! 2-3 weeks after placing our gang-order to USCF, we receive shipment and notify you by postcard or telephone call, whichever you prefer.

BOOKPLAN uses USCF's Affiliate Purchasing Privileges to buy books at an even greater discount than offered to USCF members. RECA pays mail handling on its bulk order, saving you money. The only stipulations are that our orders must total over \$100 at retail rates, and that you must come in person to RPCC to pick up your shipment after you have been notified of its arrival.

RECA places a BOOKPLAN order every other month due to the increasing number of chess books available and the ever-growing cadre of chess book buyers. If you wish to skip tax and mail handling expenses on your next chess book order, why not buy through RECA BOOKPLAN?

Sorry, we accept no special orders on equipment since the USCF's Affiliate Purchasing Privilege offers us no better discount on multiple equipment purchases than it offers to any USCF individual member.

Membership

INDIVIDUAL MEMBERSHIP

\$ 5.00

Includes a year's subscription (four issues) to OPEN FILE, plus rate discounts for Display Ads & Cap Classifieds (please see the Ad Rate Schedule in this issue), plus a listings discount in the OPEN FILE's INTRODUCTIONS column, plus occasional entry discounts at RECA events

RECA PATRON

\$ 25.00

OR MORE \$ _____

All of the above, plus a THANK YOU in print for your generous contribution to advance chess education through RECA's educational programs

OPEN FILE CLUB DEAL

10-MEMBER MINIMUM CHARGE \$ 40.00
+ (\$ 4.00 X EXTRA MEMBERS) = \$ _____
SUBTOTAL \$ _____

Includes a one-year subscription (four issues) to OPEN FILE for every CLUB DEAL club member (with pro-rated price breaks to accommodate new members who join your club after you first take advantage of the CLUB DEAL), plus rate discounts for Display Ads & Cap Classifieds (please see Ad Rate Schedule in this issue), plus listing privileges in the CHESTVITIES EVENTS & ACTIVITIES column, plus news publishing privileges & roster listing in the CLUB SCENE column, plus tournaments & results listings in the TOURNAMENT UPDATE column. EVEN IF YOUR CLUB DOES NOT HAVE 10 MEMBERS, THE \$40.00 MINIMUM CLUB DEAL FEE GETS YOU 4 ISSUES OF VALUABLE PROMOTIONAL LISTING PRIVILEGES AT VERY LOW RATES! CLUBS: BE CERTAIN TO ENCLOSE COMPLETE PRINTED OR TYPEWRITTEN NAME AND ADDRESS INFORMATION FOR EACH SUBSCRIBING MEMBER ALONG WITH THE COUPON

NAME _____

ADDRESS _____

CITY _____

STATE _____

ZIP _____

TELEPHONE (optional) _____

USCF ID# (if member) _____

CURRENT RATING (if any) _____

NEW MEMBERSHIP

RENEWAL MEMBERSHIP

CHANGE OF ADDRESS

Check this box if you do not wish RECA to release your address information to direct mail merchandisers who purvey chess-related books and equipment. Telephone numbers are never so released, and appear in only in OPEN FILE's INTRODUCTIONS column and then only by your personal written signed release. If you do not wish to use this coupon a photocopy or facsimile will do.

If your name and address information on the mailing label on the other side of this coupon is correct, there is no need to fill out the coupon. If not, then please print legibly or type in the information requested. Check the appropriate box and then mail your RECA membership subscription coupon along with your check or money order for the appropriate amount to

RECA

200 Avram Ave
Rohnert Park CA 94928

SPECIAL NOTE TO CURRENT SUBSCRIBERS: Rohnert Park Chess Club members will continue receiving OPEN FILE for the remainder of 1987. As of January 1988 OPEN FILE subscription becomes a matter of choice for each individual, or a matter of collective choice if RPCC applies for the OPEN FILE CLUB DEAL.



REDWOOD EMPIRE CHESS ASSOCIATION

Members of RECA support the association's effort to broaden and develop chess as a significant educational tool. RECA provides some advanced chess instruction, but we firmly believe the viable future of our society is in the hands and minds of today's youth. RECA concentrates its efforts on establishing chess in our school systems as an integral feature of the regular educational curriculum.

RECA members each receive a subscription to our quarterly publication, OPEN FILE. Other member privileges include occasional discounts on RECA-sponsored chess events, reduced OPEN FILE advertising rates, and specific OPEN FILE listing services. Clubs, in particular, should benefit by RECA's OPEN FILE CLUB DEAL, which offers clubs inexpensive advertising and promotional services for their events and activities. RECA's forthcoming CLUB PAC and TOURNAMENT PAC will be of special import in club efforts to organize, stabilize, grow, and gain community respect through participation in the establishment of chess in our school systems as an integral feature of the regular educational curriculum, and in society in general as a tool for the enhancement of analytical thinking processes and also as a particularly valuable pastime for all.

55013569
 LOWELL HS CHESS CLUB
 C/O HANS POSCHMANN
 4621 SENECA PARK AVE
 FREMONT CA 94538
 RETURN POSTAGE IS GUARANTEED
 ADDRESS CORRECTION REQUESTED
 COMPLIMENTARY COPY



200 Avram Avenue Rohnert Park, CA 94928



842 Lilac Way, Rohnert Park, CA 94928

REDWOOD EMPIRE CHESS ASSOCIATION



All RECA's programs and presentations are based on the premise that smarter citizens make better decisions. Goals are predicated on numerous scientific studies conducted worldwide which recognize that serious study of chess imbues its students with increased analytical capacities which are reflected in measurably improved overall scholastic performance testing. Although RECA provides some advanced chess instruction, we firmly believe the viable future of our society is in the hands and minds of today's youth. We concentrate our efforts on establishing chess in our school systems as an integral feature of the regular educational curriculum.

Our Purpose
CHESS MAKES YOU SMARTER

The Redwood Empire Chess Association is a nonprofit corporation founded to broaden and develop chess as a significant educational tool. RECA will implement its goal through:
 Public discussion groups, forums, panels, lectures, and other forms of public education in schools and in other public places.
 Cooperation with chess clubs, schools and other groups and institutions in the Redwood Empire in teaching chess and conducting tournaments.



64K FOR IBM PC AND COMPATIBLES

LEARN OPENINGS FAST!



= IMPROVED OPENING PLAY!

INTERACTIVE PROGRAM

It doesn't just show you the moves. You actually get to try out several guesses at each move.

DYNAMIC CHESS OPENINGS is a software package that allows you to dynamically interact with your own personal electronic "book" of chess openings.

DCO MAKES IT EASY

- ✦ TO CREATE YOUR OWN BOOK OF OPENINGS STORED IN YOUR COMPUTER'S MEMORY ✦
- ✦ TO TRADE YOUR OPENING BOOK DISKS WITH OTHER DCO OWNERS ✦
- ✦ TO LEARN AN OPENING FROM BOTH THE WHITE AND BLACK SIDES ✦
- ✦ TO SAVE TIME IN STUDYING OPENINGS ✦
- ✦ TO INCREASE YOUR CONFIDENCE IN YOUR OPENINGS ✦

PRICE: ONLY \$12⁵⁰

FOR MAIL ORDERS ADD \$2⁰⁰ SHIPPING COSTS. CALIFORNIA RESIDENTS ADD 75¢ SALES TAX.

CUT OFF COUPON, FILL OUT COMPLETELY, AND ENCLOSE YOUR CHECK OR MONEY ORDER FOR THE APPROPRIATE AMOUNT AND MAIL TO:

NAME _____
 ADDRESS _____
 CITY, STATE, ZIP _____

SPLINE SOLUTIONS
 5437 ALTA MONTE DR
 SANTA ROSA, CA 95404



ROHNERT PARK SUMMER OPEN

SATURDAY JUL 18 ROUNDS 10 AM ✦ 2 PM ✦ 6:30 PM SUNDAY JUL 19 ROUNDS 10 AM ✦ 3 PM	U.S.C.F. RATED 5 ROUNDS SWISS SYSTEM ACC 1ST TIME CONTROL 40/90 SUBSEQUENT CONTROLS 15/30
--	--

SITE:
 BURTON AVE
 RECREATION CENTER
 7421 BURTON AVE
 ROHNERT PARK, CA



MINIMUM: 10 ENTRIES PER CLASS, OTHERWISE CLASS MUST PLAY UP
 ALL CLASSES COMPETE FOR OPEN PRIZE
 UNRATED IN OPEN ONLY

5 GRAND PRIX POINTS

\$ 350 GUARANTEED OPEN PRIZE FUND

\$200 — 1st ✦ \$100 — 2nd
 \$50 — UNDER 2400

ADDITIONAL CLASS PRIZES

CLASS	RATING	1ST	2ND
EXPERT	2000 - 2199	\$150	\$30
A	1800 - 1999	\$125	\$30
B	1600 - 1799	\$100	\$30
C & UNDER	1599 & under	\$75	\$30

ONE PRIZE PER PLAYER

REGISTRATION: 8:30 - 9:30 AM SATURDAY

ENTRY FEE: \$30 if postmarked by JUL 13 ✦ **\$40** at door
MAIL: Walter Randle ✦ 842 Lilac Way, Rohnert Park, CA 94928 ✦ 707/795-2220