

U. S. OPEN CHAMPIONSHIP

Long Beach, 1955

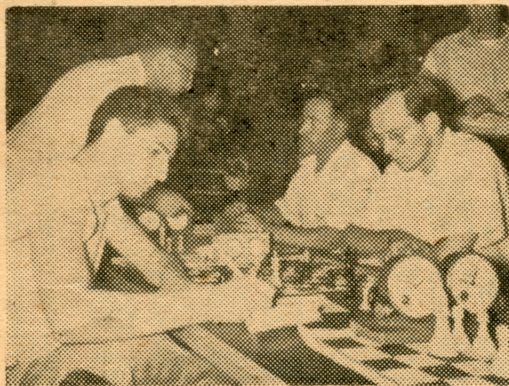
1. Nicolas Rossolimo (New York City, N.Y.).....	W79	W70	W53	W26	D3	D52	W23	D2	D6	W8	W9	W4	10 - 2
2. Samuel Reshevsky (Spring Valley, N.Y.).....	W78	W45	W153	D52	W30	W21	D3	D1	D4	W13	W6	W8	10 - 2
3. Donald Byrne (Ann Arbor, Mich.).....	W82	W50	W31	W57	D1	W27	D2	W21	D2	W10	L4	W7	9 1/2 - 3 1/2
4. Larry Evans (New York City, N.Y.).....	W147	D13	W56	W20	D34	W55	D10	W11	D8	W22	W3	L1	9 - 3
5. A. A. Turner (Mt. Vernon, N.Y.).....	W35	L7	W48	W15	L6	W60	W19	W72	D36	D11	W31	W13	9 - 3
6. Anthony F. Saily (Douglaston, N.Y.).....	W104	W37	L21	W150	W5	W9	L8	W17	D1	W14	L2	W27	8 1/2 - 3 1/2
7. Ivan Romanenko (Plainfield, N.J.).....	W135	W5	D9	D28	D24	W29	L11	W58	W52	W15	W22	L3	8 1/2 - 3 1/2
8. James T. Sherwin (New York City, N.Y.).....	W107	W62	W77	W55	L21	W26	W6	W52	D3	L1	W20	L2	8 1/2 - 3 1/2
9. Irving Rivise (Los Angeles, Calif.).....	W76	W17	D7	W47	D52	L6	W70	D14	W43	W29	L1	W25	8 1/2 - 3 1/2
10. Herbert Seidman (Brooklyn, N.Y.).....	W114	W152	W73	L21	W74	W37	D4	D36	W53	L3	D11	W20	8 1/2 - 3 1/2
11. Arthur W. Duke (Portland, Ore.).....	W68	W29	D20	D54	W13	D38	W7	L4	W28	D5	D10	D12	8 - 4
12. Robert Steinmeyer (St. Louis, Mo.).....	W108	W15	D47	W19	L27	D43	L31	W59	W17	W21	D16	D11	8 - 4
13. Albert Sandrin (Chicago, Ill.).....	W101	D4	D24	W93	L1	W76	W59	W23	W21	L2	W38	L5	8 - 4
14. Hans Berliner (Washington, D.C.).....	WF93	W18	L57	W49	L70	WF62	W55	D9	W56	L6	W39	D16	8 - 4
15. Raymond Martin (Santa Monica, Calif.).....	W87	L12	W107	L5	W85	W68	W26	W40	D20	L7	W53	D30	8 - 4
16. Herman Steiner (Los Angeles, Calif.).....	W67	L77	W87	W18	L55	W96	W44	L20	W19	W54	D12	D14	8 - 4
17. J. Zalus (Montreal, Canada).....	W109	L9	W85	D119	D20	WF124	W46	L6	L12	W77	W70	W37	8 - 4
18. Alex Suchobek (Pacific Grove, Calif.).....	W148	L14	W35	L16	W132	WF106	L25	D90	W80	W43	D30	W36	8 - 4
19. Larry Remlinger (Long Beach, Calif.).....	W136	W124	D23	L12	D71	W94	L5	W41	L16	W58	W78	W38	8 - 4
20. William Addison (San Francisco, Calif.).....	W112	W60	D11	L4	D17	W50	W34	W16	D15	W36	L8	L10	7 1/2 - 4 1/2
21. Paul Brandts (Bronx, N.Y.).....	WF154	W92	W6	W10	W8	L2	W53	L3	L13	L12	D44	W56	7 1/2 - 4 1/2
22. Robert Cross (Santa Monica, Calif.).....	W121	D24	L36	W79	W45	D30	W39	W25	W38	L4	L7	D29	7 1/2 - 4 1/2
23. Allen Kaufman (Bronx, N.Y.).....	W126	W90	D19	W36	D4	W70	L1	L13	W73	D25	D37	D26	7 1/2 - 4 1/2
24. Eliot Hearst (New York City, N.Y.).....	W88	D22	D13	W83	D7	W69	L52	W39	L29	W42	L27	W59	7 1/2 - 4 1/2
25. William Lombardy (Brooklyn, N.Y.).....	L41	W125	D71	W92	W64	D54	W18	L22	W34	D23	W40	L9	7 1/2 - 4 1/2
26. Edgar McCormick (East Orange, N.J.).....	W100	W61	W40	L1	W59	L8	L15	W49	W72	L38	W71	D23	7 1/2 - 4 1/2
27. Carl Pilnick (New York City, N.Y.).....	W151	D91	W75	W46	W12	L3	D38	L53	D32	W60	W24	L6	7 1/2 - 4 1/2
28. Morris Gordon (Los Angeles, Calif.).....	W98	W49	W32	D7	L53	W42	L36	W30	L11	L39	W90	W61	7 1/2 - 4 1/2
29. J. G. Sullivan (Knoxville, Tenn.).....	W145	L11	D117	W123	W63	L7	W42	W37	W24	L9	D36	D22	7 1/2 - 4 1/2
30. Karl Burger (Brooklyn, N.Y.).....	D86	W155	W91	W44	L2	D22	D37	L28	W117	W56	D18	D15	7 1/2 - 4 1/2
31. Eugene Levin (Pacific Palisades, Calif.).....	W72	W105	L4	W41	L37	W71	W12	L38	W11	D53	L5	W57	7 1/2 - 4 1/2
32. Miro Radoicic (Los Angeles, Calif.).....	W150	D44	L28	W151	W56	L24	W8	D54	D27	D71	D41	W52	7 1/2 - 4 1/2
33. Bruno Schmidt (Homer, N.Y.).....	W123	L58	W80	D153	L25	W95	W79	L43	D55	W73	D54	W53	7 1/2 - 4 1/2
34. Jeremiah F. Donovan (Brooklyn, N.Y.).....	L117	W100	D92	D11	W107	W66	L20	W64	L25	D79	W80	W55	7 1/2 - 4 1/2
35. Mike Hailparn (Fresno, Calif.).....	L5	W146	L18	W149	D150	W92	D75	L62	D74	W117	W60	W54	7 1/2 - 4 1/2
36. Louis Levy (Paterson, N.J.).....	W94	D56	W22	L23	W152	W75	W28	D10	D5	L20	D29	L18	7 - 5
37. Charles Wallace (Los Angeles, Calif.).....	W48	L6	W142	W58	W31	L10	D30	L29	W65	W52	D23	L17	7 - 5
38. Zoltan Kovacs (New York City, N.Y.).....	D65	W95	D42	W90	W76	D11	D27	W31	L22	W26	L13	L19	7 - 5
39. George Hunnex (Elsinore, Calif.).....	W137	L47	D63	W81	W91	W57	L22	L24	W67	W28	L14	D31	7 - 5
40. Dmitri Poliakoff (San Francisco, Calif.).....	W80	W96	L26	L76	D51	W83	W48	L15	W94	W64	L25	D44	7 - 5
41. Boris Carfinkel (Aberdeen, Md.).....	W25	L53	W126	L31	L106	WF119	W78	L19	W89	W47	D32	D39	7 - 5
42. Blake W. Stevens (San Antonio, Tex.).....	W125	D46	D38	W94	D54	L28	L29	W85	W82	L24	D45	W79	7 - 5
43. Robert Brieger (Houston, Tex.).....	L91	W118	W89	W73	D57	D12	D54	W33	L9	L18	D48	W78	7 - 5
44. Vladimir Pafnutieff (San Francisco, Calif.).....	W122	D32	W65	L30	D60	W93	L16	D71	W90	D78	D21	D40	7 - 5
45. James Bolton (New Haven, Conn.).....	W141	L2	D67	W104	L22	W35	LF74	L56	D46	D62	D42	W77	7 - 5
46. Richard McLellan (Omaha, Neb.).....	W149	D42	W82	L27	W47	L53	L17	W68	D45	D57	D79	W91	7 - 5
47. W. M. Byland (Pittsburgh, Pa.).....	W127	W39	D12	L9	L46	D103	W84	D82	D58	L41	W85	W63	7 - 5
48. Edmund Godbold (Ft. McClellan, Ala.).....	L37	W136	L5	W109	W88	D74	L40	W138	L60	W84	D43	W70	7 - 5
49. William Bills (Seattle, Wash.).....	W118	L28	W124	L14	D78	W97	D57	L26	L64	W110	W84	W72	7 - 5
50. Arthur Spiller (New York City, N.Y.).....	W144	L3	W114	L59	W82	L20	D68	W98	L70	D103	W76	W73	7 - 5
51. Glenn Hartleb (Tampa, Fla.).....	W139	L52	L93	W120	D40	L108	L98	W127	W88	D92	W81	W71	7 - 5
52. Peter Lapien (Los Angeles, Calif.).....	W138	W51	W74	D2	D9	D1	W24	L8	L7	L37	W91	L32	6 1/2 - 5 1/2
53. Charles Henin (Chicago, Ill.).....	WF120	W41	L1	W105	W28	W46	L21	W27	L10	D31	L15	L33	6 1/2 - 5 1/2
54. Anthony Santasiere (New York City, N.Y.).....	W97	D75	W81	D11	D42	D25	D43	D32	W62	L16	D33	L35	6 1/2 - 5 1/2
55. Saul Yarmak (Ft. Belvoir, Va.).....	W129	W117	W58	L8	W16	L4	L14	D60	D33	W72	D59	L34	6 1/2 - 5 1/2
56. Robert Jacobs (Los Angeles, Calif.).....	W130	D36	L4	W65	L32	W78	W117	W45	L14	L30	W68	L21	6 1/2 - 5 1/2
57. Charles Bagby (San Francisco, Calif.).....	W110	W59	W14	L3	D43	L39	D49	L81	W83	D46	W67	L31	6 1/2 - 5 1/2
58. Henry Gross (San Francisco, Calif.).....	W106	W33	L55	L37	D61	W138	W63	L7	D23	L19	W108	D64	6 1/2 - 5 1/2
59. James R. Schroeder (Columbus, Ohio).....	W99	L57	W116	W50	L26	W77	L13	L12	W106	W66	D55	L24	6 1/2 - 5 1/2
60. Daniel Fischheimer (Chicago, Ill.).....	W116	L20	W155	D77	D44	L5	W124	D55	W48	L27	L35	W92	6 1/2 - 5 1/2
61. Gilbert Ramirez (San Francisco, Calif.).....	W69	L26	L70	W110	D58	W80	L32	L117	W86	W96	W62	L28	6 1/2 - 5 1/2
62. W. E. Kaiser (St. Paul, Minn.).....	W140	L8	D84	D78	W119	LF14	W132	W35	L54	D45	L61	W98	6 1/2 - 5 1/2
63. Robert Lorber (Reseda, Calif.).....	L77	W147	D39	W69	L29	W36	L58	D83	D93	W94	W104	L47	6 1/2 - 5 1/2
64. Hugh Myers (Racine, Wis.).....	L70	W113	L76	L66	W133	W69	W103	L34	W49	L40	W100	D58	6 1/2 - 5 1/2
65. Sandor Tresz (Cleveland, Ohio).....	D38	W102	L44	L56	L86	W142	W38	W75	L37	L67	W124	W121	6 1/2 - 5 1/2
66. Abraham Croll (Detroit, Mich.).....	L73	L69	W135	W64	W67	L34	L71	W143	W76	L59	D75	W90	6 1/2 - 5 1/2
67. Jack F. Shaw (Albuquerque, N.M.).....	L16	W115	D45	D34	L66	D112	W111	W95	L39	W65	L57	W101	6 1/2 - 5 1/2
68. Theodore Eisenstadt (San Francisco, Cal.).....	L11	D130	D102	W101	W105	L15	D50	L46	W120	W74	L56	W97	6 1/2 - 5 1/2
69. Al Raymond (Bakersfield, Calif.).....	L61	W66	L83	L63	W101	L64	L110	W112	W105	W132	D92	W93	6 1/2 - 5 1/2
70. Gustave Drexel (Miami Beach, Fla.).....	W64	L1	W61	W106	W14	L23	L9	L73	W50	W81	L17	L48	6 - 6
71. Paul Monsky (Brooklyn, N.Y.).....	L119	W101	D25	W141	D19	L31	W66	D44	W97	D32	L26	L51	6 - 6
72. Gerald Schain (Los Angeles, Calif.).....	L31	W134	W119	D17	D75	W91	W104	L5	L26	L55	W83	L49	6 - 6
73. Sven Almgren (Los Angeles, Calif.).....	W66	W119	L10	L43	L93	W123	W105	W70	L23	L33	W95	Y50	6 - 6
74. Ronald Gross (Compton, Calif.).....	W113	W84	L52	W132	L10	D48	LF45	D92	D35	L68	W119	D80	6 - 6

(Please turn to page 8, columns 2-4)

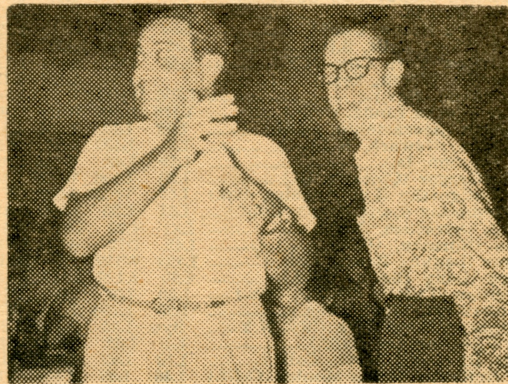
U. S. OPEN CHAMPIONSHIP CONTINUED

75. Robert Potter (Dallas, Tex.).....	W85	D54	L27	W84	D72	L36	D35	L65	W108	D95	D66	D87	6 - 6
76. S. H. Van Gelder (San Francisco, Calif.).....	L9	W109	W64	W40	L38	L13	L41	W107	L66	W133	L50	W113	6 - 6
77. Bela Rozsa (Tulsa, Okla.).....	W63	W16	L8	D60	D96	L59	D85	D108	W132	L17	W103	L45	6 - 6
78. Michael Hart (Hollywood, Calif.).....	L2	D141	W99	D62	D49	L32	WF151	W104	W96	D44	L19	L43	6 - 6
79. Thomas Fries (Fresno, Calif.).....	L1	W140	D152	L22	W151	D90	L33	W118	W110	D34	D46	L42	6 - 6
80. Walter Grombacher (Chicago, Ill.).....	L40	W139	L33	W115	D90	L61	W150	W91	L18	W97	L34	D74	6 - 6
81. Sonja Graf-Stevenson (Palm Springs, Cal.).....	D155	W86	L54	L39	W114	D84	W102	W57	L31	L70	L51	W106	6 - 6
82. Kenneth Colby (San Francisco, Calif.).....	L3	W144	L46	W127	L50	W109	W93	D47	L42	L90	D86	W105	6 - 6
83. E. J. Van Sweden (Grand Rapids, Mich.).....	D95	D103	W69	L24	D138	L40	W120	D63	L57	W89	L72	W107	6 - 6
84. Lewis J. Isaacs (Chicago, Ill.).....	W128	L74	D62	L75	W111	D81	L47	W141	W133	L48	L49	W103	6 - 6
85. Ronald Day (Compton, Calif.).....	L75	W97	L17	W133	L15	W147	D77	L42	D112	W122	L47	W114	6 - 6
86. Kathryn Slater (New York City, N.Y.).....	D30	L81	W112	L96	W65	L63	L95	W121	L61	W99	D82	W111	6 - 6
87. William Carr (Los Angeles, Calif.).....	L15	W83	L16	L98	W137	D127	L91	W144	D104	D119	W96	D75	6 - 6
88. Frank Hufnagel (Los Angeles, Calif.).....	L24	L87	W144	W118	L48	D134	L65	W125	L51	D115	W123	W108	6 - 6
89. Jim Mangan (Milwaukee, Wis.).....	L153	W149	L43	L103	W154	L132	WF136	W124	L41	L113	W115	W104	6 - 6
90. Viktor Pupols (Tacoma, Wash.).....	W143	L23	W138	L38	D80	D79	W141	D18	L44	W82	L28	L66	53-6 1/2
91. Ed Logwood (San Francisco, Calif.).....	W43	D27	L30	W117	L39	L72	W87	L80	W98	W93	L52	L46	53-6 1/2
92. Alan Chappell (Gilroy, Calif.).....	W134	L21	D34	L25	W123	L35	W112	D74	D103	D51	D69	L60	53-6 1/2
93. Thomas Jenkins (Huntington Woods, Mich.).....	LF14	W148	W51	L13	W73	L44	L82	W147	D63	L91	W102	L69	53-6 1/2
94. Marshall Rohland (Milwaukee, Wis.).....	L36	W131	W103	L42	W98	L19	W118	D96	L40	L63	L97	W125	53-6 1/2
95. Russell Koutz (Inglewood, Calif.).....	D83	L38	L104	W99	W126	L33	W86	L67	WF138	D75	L73	D100	53-6 1/2
96. Eugene Warner (Richland, Wash.).....	W111	L40	D108	W86	D77	L16	W106	D94	L78	L61	L87	W126	53-6 1/2
97. Donald Young (San Gabriel, Calif.).....	L54	L85	W140	W146	D103	L49	WF152	W102	L71	L80	W94	L68	53-6 1/2
98. Salvador Ruvalcava (Tijuana, Mexico).....	L28	W120	L105	W87	L94	D141	W51	L50	L91	W123	W117	L62	53-6 1/2
99. Paul V. Nielsen (Los Angeles, Calif.).....	L59	D112	L78	L95	W149	D100	W115	L106	D102	L86	WF127	WF119	53-6 1/2
100. Bob Walker (Newport Beach, Calif.).....	L26	L34	W139	L124	D155	D99	W142	L103	W107	W106	L64	D95	53-6 1/2
101. Fletcher Gross (La Canada, Calif.).....	L13	L71	W134	L68	L69	D140	W128	D114	D118	W120	W109	L67	53-6 1/2
102. Ralph Clark (Long Beach, Calif.).....	D103	L65	D68	W126	L141	W116	L81	L97	D99	W121	L93	W117	53-6 1/2
103. William Slater (New York City, N.Y.).....	D102	D83	L94	W89	D97	D47	L64	W100	D92	D50	L77	L84	5 - 7
104. Major J. B. Holt (Long Beach, Fla.).....	L6	D123	W95	L45	W108	W51	L72	L78	D87	W112	L63	L89	5 - 7
105. E. F. Schrader (Compton, Calif.).....	W132	L31	W98	L53	L68	W121	L73	L110	L69	W128	W116	L82	5 - 7
106. Collin McKinnon (Downey, Calif.).....	L58	W137	W156	L70	W41	LF18	L96	W99	L59	W100	W122	L81	5 - 7
107. Rex Wilcox (Sacramento, Calif.).....	L8	W135	L15	W137	L34	L118	W116	L76	L100	W129	W131	L83	5 - 7
108. James E. Warren (Chicago, Ill.).....	L12	W121	D96	L152	L104	W155	W127	D77	L75	W126	L58	L88	5 - 7
109. John W. Blaney (Long Beach, Calif.).....	L17	L76	W125	L48	W136	L82	WF131	L132	D124	D111	L101	W134	5 - 7
110. Robin C. Kirby (Lemon Grove, Calif.).....	L57	W128	L150	L61	L140	W146	W69	W105	L79	L49	L113	W133	5 - 7
111. Maxwell L. Davis (Redondo Beach, Calif.).....	L96	D151	L141	W130	L84	W126	L67	W129	L119	D109	W133	L86	5 - 7
112. William Shirey (Fresno, Calif.).....	L20	D99	L86	D155	W129	D67	L92	W137	D85	L104	D126	D122	5 - 7
113. Olga Higgins (Santa Barbara, Calif.).....	L74	L64	W143	L138	L147	L129	W149	L69	W145	W142	W110	L76	5 - 7
114. Albert Markus (Garden Grove, Calif.).....	L10	W145	L50	D142	L81	D115	D137	D101	L122	W143	W132	L85	5 - 7
115. Paul Ligtvoet (Kalamazoo, Mich.).....	L152	L67	W128	L80	D120	D114	L99	D142	W137	D88	L89	W135	5 - 7
116. John Maier (Hollywood, Calif.).....	L60	W122	L59	L119	W145	L102	L107	L133	W139	W135	L105	WF132	5 - 7
117. John Rinaldo (Long Beach, Calif.).....	W34	L55	D29	L91	W142	W152	L56	W61	L30	L35	L98	L102	43-7 1/2
118. John Ishkan (Fairfield, Conn.).....	L49	L43	W148	L88	WF156	W107	L94	L79	D101	L124	D134	D131	43-7 1/2
119. John O. N. Thomas (Inglewood, Calif.).....	W71	L73	L72	W116	L62	LF41	LF143	W154	W111	D87	LF74	LF99	43-7 1/2
120. Philip C. McKenna (Santa Monica, Calif.).....	LF53	L98	W145	L51	D115	W123	L83	W151	L68	L101	L125	W137	43-7 1/2
121. William M. Boyer (Long Beach, Calif.).....	L22	L108	W122	WF156	L124	L105	D129	L86	W144	L102	W137	L65	43-7 1/2
122. Kyle Forrest (Manhattan Beach, Calif.).....	L44	L116	L121	W139	W146	L73	L147	W131	W114	L85	L106	D112	43-7 1/2
123. Frederick B. Fuels (Long Beach, Calif.).....	L33	D104	W147	L29	L92	L120	L126	W140	W143	L98	L88	W145	43-7 1/2
124. Morris Blumenfeld (Los Angeles, Calif.).....	W142	L19	L49	W100	W121	LF17	L60	L89	D109	W118	L65		43-7 1/2
125. E. Forry Laucks (West Orange, N.J.).....	L42	L25	L109	L147	D128	W130	WF155	L88	L142	W144	W120	L94	43-7 1/2
126. George McMahon (Sepulveda, Calif.).....	L23	W143	L41	L102	L95	L111	W123	W134	W141	L108	D112	L96	43-7 1/2
127. Chester Lyon (Peoria, Ill.).....	L47	L142	W131	L82	W135	D87	L108	L51	D128	D134	LF99	W146	43-7 1/2
128. Burt Thach (Long Beach, Calif.).....	L84	L100	L115	L135	D125	W149	L101	WF155	D127	L105	W136	D129	43-7 1/2
129. Paul Wagner (Sioux Falls, S.D.).....	L55	L150	L137	W131	L112	W113	D121	L111	D134	L107	W146	D128	43-7 1/2
130. S. Goodman (New York City, N.Y.).....	L56	D68	L151	L111	L144	L125	W148	L135	L149	W154	W143	WF142	43-7 1/2
131. Jack Beasley (Ft. Worth, Tex.).....	L94	L127	L129	W139	W145	LF109	L122	W154	W141	L107	D118		43-7 1/2
132. K. R. Jones (Reno, Nev.).....	L105	WF154	W146	L74	L18	W89	L62	W109	L77	L69	L114	LF116	4 - 8
133. Fred Johnson (Yorba Linda, Calif.).....	L156	L138	W154	L85	L64	L136	W146	W116	L84	L76	L111	L110	4 - 8
134. Siguro Swenson (Sacramento, Calif.).....	L92	L72	L101	L140	Bye	D88	L138	L126	D129	D127	D118	L109	4 - 8
135. Ralph Houghton (Newark, N.J.).....	L7	L107	L66	W128	L127	L137	L154	W130	W136	L116	WF142	L15	4 - 8
136. A. E. Crew (Marion, Ia.).....	L19	L48	W149	L35	D109	W133	LF89	W145	L135	W139	L128	W143	4 - 8
137. Katherine McGregor (Chicago, Ill.).....	L39	L106	W129	L107	L87	W135	L114	L112	L115	W140	L121	L20	33-8 1/2
138. Jacqueline Platigorsky (Los Angeles, Cal.).....	L52	W133	L90	W113	D83	L58	W134	L48	LF95				33-8 1/2
139. Lawrence Frembling (Long Beach, Calif.).....	L51	L80	L100	L122	L131	W148	L145	W149	L116	L136	D140	W144	33-8 1/2
140. Donald Dann (Syracuse, N.Y.).....	L62	L79	L97	W134	W110	D101	L144	L123	D146	L137	D139	W148	33-8 1/2
141. Jerry Spann (Norman, Okla.).....	L45	D78	W111	L71	W102	D98	L90	L84	L26	L131			3 - 9
142. S. L. Zedekar (Laguna Beach, Calif.).....	L124	W127	L37	D114	L117	L65	L100	D115	W125	L113	LF135	LF130	3 - 9
143. Mike George (Long Beach, Calif.).....	L90	L126	L113	L145	W148	W154	WF119	L66	L123	L114	L130	L136	3 - 9
144. James Creighton (Corpus Christi, Tex.).....	L50	L82	L88	D149	W130	L151	W140	L87	L121	L125	D148	L139	3 - 9
145. Clarence Cleere (Ft. Worth, Tex.).....	L29	L114	L120	W143	L116	L131	W139	L136	L113	LF146	W149	L123	3 - 9
146. Robert Offenber (New York City, N.Y.).....	Bye	L35	L132	L97	L122	L10	L133	D148	D140	WF145	L129	L127	3 - 9
147. Sam Geller (Los Angeles, Calif.).....	L4	L63	L123	W125	W113	L85	W122	L93					3 - 9
148. A. E. Chapin III (Long Beach, Calif.).....	L18	L93	L118	L154	L143	L139	L130	D146	Bye	W149	D144	L140	3 - 9
149. Mrs. Philip McKenna (Santa Monica, Calif.).....	L46	L89	L136	D144	L99	L128	L113	L139	W130	L148	L145	Bye	23-9 1/2
150. Mark Euchter (Orinda, Calif.).....	L32	W129	W110	L6	D35	L45	L80						23-9 1/2
151. Charles Henderson (Beverly Hills, Calif.).....	L27	D111	W130	L32	L79	W144	LF78	L120					23-9 1/2
152. James Barry (Ann Arbor, Mich.).....	L115	L10	D79	W108	L36	L117	LF97						23-9 1/2
153. Harry Borochow (Los Angeles, Calif.).....	W89	W156	L2	D33									23-9 1/2
154. Walter Otteson (Milwaukee, Wis.).....	LF21	LF132	L133	W148	L89	L143	W135	L119	L131	L130			2 - 10
155. Ben Kakimi (Los Angeles, Calif.).....	D81	L30	L60	D112	D100	L108	LF125	LF128					14-10 1/2
156. John Alexander (San Diego, Calif.).....	W133	L153	L106	LF121	LF118								1 - 11

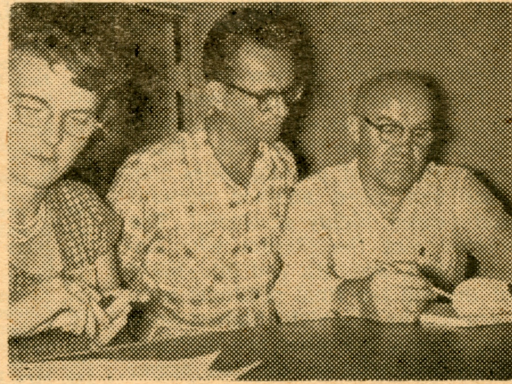
Tournament Director: Orlo M. Rolo, assisted by Imre Konig.



Tournament scene—Saul Yarmak (left) vs. James Schroeder in foreground. Behind Dr. Bruno Schmidt leans over to speak to Anthony Santasiere.



Dr. Bela Rozsa (left) ticks off the point of an argument while W. M. Byland laughs—all is not serious chess at the U. S. Open.



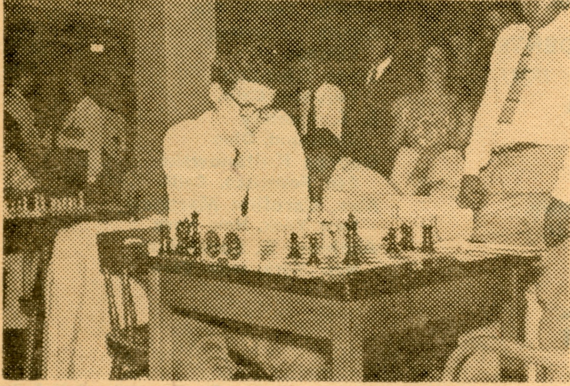
Tournament Director Orlo M. Rolo (right) checks a score with Grandmaster Nicolas Rossolimo (center) at the U. S. Open.

Photography by Marshall Rohland

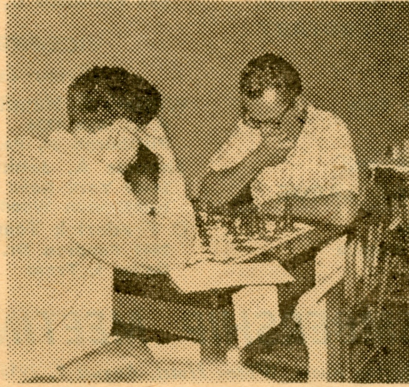
U. S. OPEN CHAMPIONSHIP

Long Beach, 1955

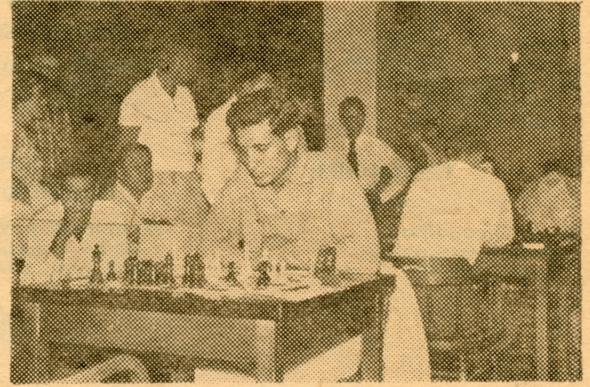
A Pictorial Review



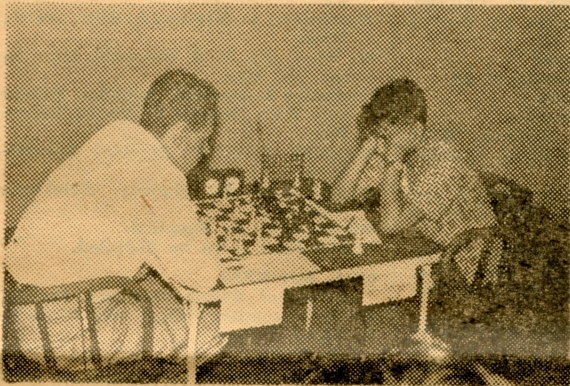
Donald Byrne, 1943 U. S. Open Champion studies his position.



THE DECISIVE GAME
Larry Evans (left) vs. Nicolas Rossolimo.



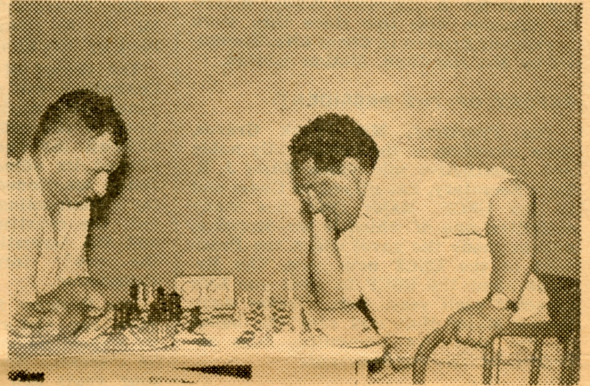
Larry Evans, 1954 U. S. Open Champion and former U. S. Champion, in a characteristic pose of contemplation.



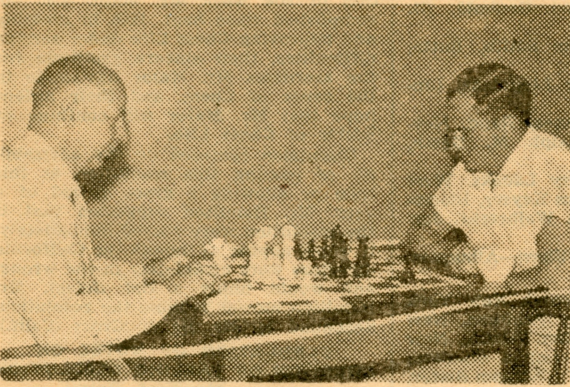
Zoltan Kovacs (left) faces 13-year old Larry Remlinger, second in the recent U. S. Junior Championship.



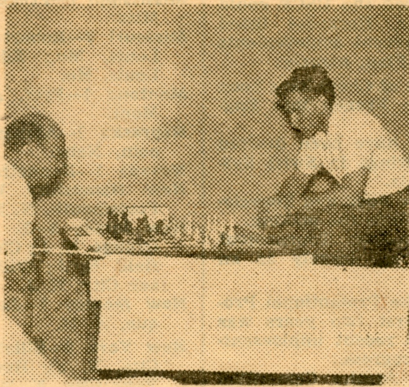
Grandmaster Samuel Reshevsky, as unperturbed as ever, in the final round.



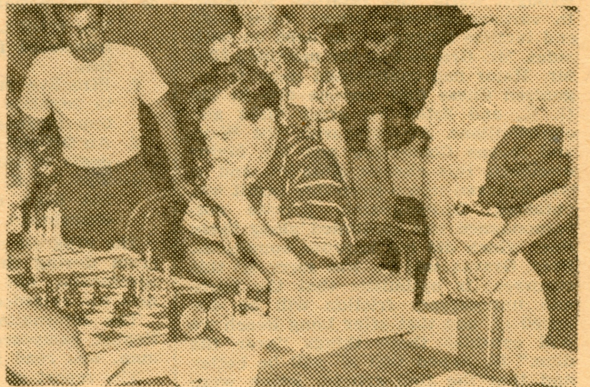
Albert Sandrin (left), 1949 U. S. Open Champion, in a mid-game battle with Abe Turner.



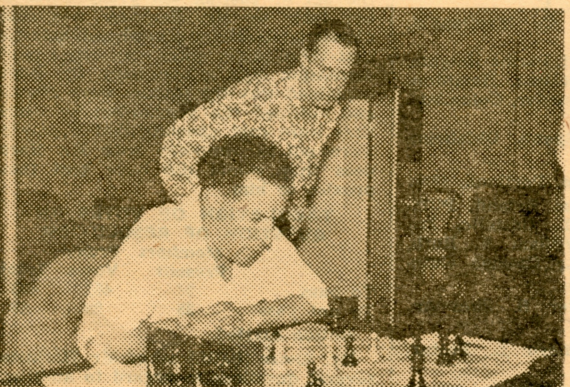
Arthur Dake (left) contemplates his next move against Robert Steinmeyer.



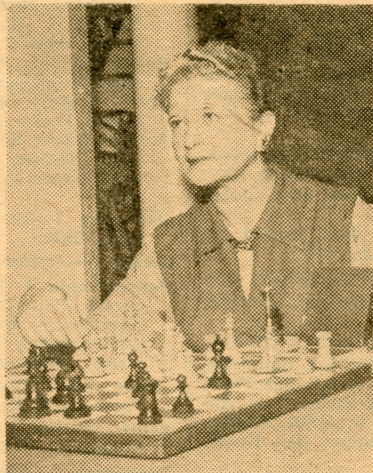
James Sherwin's antics (right) bring only a smile from Reshevsky.



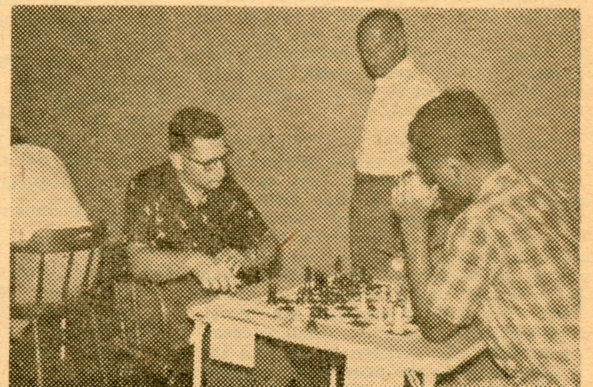
Herman Steiner (right), 1946 U. S. Open Champion and former U. S. Champion, ponders the position.



William M. Byland, new USCF Tournament Committee Chairman, peers over the shoulder of Anthony E. Santasiere.



1955 U. S. Women's Open Champion Sonja Graf-Stevenson.



Carl Pilnick (left) faces Anthony Saidy; the spectator is Imre Konig, referee.