

CALIFORNIA CHAMPIONSHIP 1946

Veteran A. J. Fink displays some of the fine chess which won the State title for him.

ALEKHINE'S DEFENSE

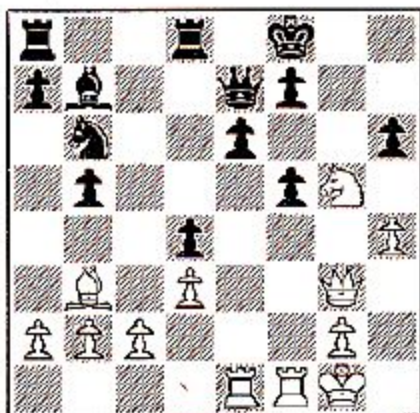
A. J. Fink

C. Howland

White

Black

1 P-K4	N-KB3	12 N-K4	B-K2
2 P-K5	N-Q4	13 B-Q2	N-Q4
3 B-B4	N-N3	14 P-KB4	P-QN4
4 B-N3	P-QB4	15 QR-K1	Q-Q2
5 Q-K2	N-B3	16 Q-B2	N-N3
6 N-KB3	P-K3	17 B-R5	P-N3
7 O-O	P-Q4	18 B-N4	R-Q1
8 PxP e.p.	BxP	19 BxB	QxB
9 P-Q3	O-O	20 P-KR4	B-N2
10 N-B3	N-Q5	21 P-B5!	NPxP
11 NxN	PxN	22 Q-N3ch	K-B1
		23 N-N5	P-KR3



24 NxKPch!

25 RxPch!

PxN

Resigns